



DE VALK  
YACHT BROKERS



## EUROCRAFT EXPLORER 44



DE VALK  
YACHT BROKERS

# EUROCRAFT EXPLORER 44

## BROKER'S COMMENTS

This yacht was built by Eurocraft with an ice-breaker hull to explore the world, she is the largest yacht built by Eurocraft so far. She is incredibly stable at anchor, and she is even equipped by stabilizers zero speed. This explorer yacht is tailor-made for adventures across the high seas; from the tropics to the poles, where all you need to do is kick-back, relax and enjoy the spectacular vistas as you cruise on by. This yacht is in the top 30% by LOA in the world. She is one of 546 motor yachts in the 40-45m size range.

*Valerio Biondi*

## SPECIFICATIONS

<b>Dimensions</b>	43.50 x 8.20 x 3.00 (m)	<b>Builder</b>	Eurocraft
<b>Built</b>	2011	<b>Cabins</b>	6
<b>Material</b>	Steel	<b>Berths</b>	12
<b>Engine(s)</b>	2 x MTU 12V 2000 M60	<b>Hp/Kw</b>	2 x 815.00 (hp), 599.84 (kw)
<b>Asking price</b>	€ 9.900.000 (VAT Not paid)	<b>Lying</b>	

## CONTACT

<b>Sales office</b>	De Valk Antibes	<b>Telephone</b>	+33 492 91 0202
<b>Address</b>	2, Avenue de Verdun 06600 Antibes France	<b>E-mail</b>	antibes@devalk.nl

## DISCLAIMER

These particulars are given in good faith as supplied but cannot be guaranteed.



# EUROCRAFT EXPLORER 44

## GENERAL

Model	EUROCRAFT EXPLORER 44
Type	motor yacht
LOA (m)	43,50
Beam (m)	8,20
Draft (m)	3,00
Year built	2011
Builder	Eurocraft
Designer	Eurocraft Studio
Displacement (t)	425
Gross tonnage	478
Hull material	steel
Hull colour	white
Superstructure material	aluminium
Deck material	teak
Fuel tank (litre)	105000
Freshwater tank (litre)	23270
Greywater tank (litre)	4270

## ACCOMMODATION

Cabins	6
Berths	12
Crew berths	9
Aft deck	yes
Pilot house	yes
Deck saloon	yes
Saloon	2 sofas, bar, tv and entertainment
Air-conditioning	FRIGIT
Navigation center	yes
Aft Cabin	yes
Dining room	yes



Galley	yes
Countertop	yes
Sink	yes
Cooker	induction
Oven	RATIONAL
Microwave	Panasonic
Fridge	FRIGIT / Blast chiller (Coldline)
Freezer	FRIGIT / Blast chiller (Coldline)
Wine cooler	LIEBHERR
Hot water system	yes
Water pressure system	yes
Dishwasher	MEIKO
Ice maker	CASTEL
Waste compactor	INKSINK EVOLUTION10
Owners cabin	French bed With sofa, vanity and jacuzzi
Bathroom	With marble finishing
Toilet	separate
Toilet system	electric
Wash basin	in the bathroom
Shower	separate
Jacuzzi	yes
Guest cabin 1	French bed
Bathroom	separate With marble finishing
Toilet	separate
Toilet system	electric
Wash basin	in the bathroom
Shower	separate
Guest cabin 2	French bed
Bathroom	separate With marble finishing
Toilet	separate
Toilet system	electric
Wash basin	in the bathroom



# EUROCRAFT EXPLORER 44

Shower	separate
Guest cabin 3	twin single
Bathroom	With marble finishing
Toilet	separate
Toilet system	electric
Wash basin	in the bathroom
Shower	separate
Guest cabin 4	twin single
Bathroom	With marble finishing
Toilet	separate
Toilet system	electric
Wash basin	in the bathroom
Shower	separate
Washing machine	2x Miele professional PW 6065 Vario
Dryer	2x Miele professional PT7136 Vario
Sky lounge	yes
Wet bar	yes

## MACHINERY

No of engines	2
Make	MTU
Type	12V 2000 M60
HP	815
kW	599.84
Maximum speed (kn)	13.5
Cruising speed (kn)	10
Range (nm)	11660
Engine hours	6057
Engine cooling system	2x Gianneschi EL3630 natural and forced engine ventilation
Drive	shaft
Engine controls	electrical



# EUROCRAFT EXPLORER 44

<b>Gearbox</b>	yes
<b>Bowthruster</b>	NAIAD MARINE VT 75 - 83 kW
<b>Gearbox</b>	ZF 2550
<b>Exhaust</b>	Underwater
<b>Propeller type</b>	Detra
<b>Propeller blades</b>	5
<b>Generator</b>	3x Onan 80kW 400 VAC 3 phase 50 Hz
<b>Running hours generator</b>	7335
<b>Batteries</b>	24V
<b>Shorepower</b>	yes
<b>Watermaker</b>	160 L
<b>Stabilizers</b>	0-speed Type 4 hydraulic NAIAD MARINE 525

## NAVIGATION

<b>Compass</b>	Wheel mark SIMRAD RG 85
<b>Depth sounder</b>	yes
<b>Log</b>	Speed log furuno
<b>Windset</b>	FURUNO Wind Sonic
<b>VHF</b>	FURUNO & SIMRAD
<b>VHF handheld</b>	FURUNO
<b>Autopilot</b>	yes
<b>Rudder angle indicator</b>	yes
<b>Radar</b>	FURUNO
<b>GPS</b>	FURUNO GPS Sensor mod. GD 150
<b>Navtex</b>	FURUNO NX-700
<b>Electronic chart(s)</b>	yes
<b>AIS receiver</b>	FURUNO AIS FA 150
<b>EPIRB</b>	yes
<b>Camera</b>	yes
<b>Searchlight</b>	220W - 230V



## EQUIPMENT

Cockpit cushions	yes
Cockpit table	yes
Cockpit chairs	yes
Bathing platform	yes
Boarding ladder	yes
Bow ladder	yes
Deck shower	yes
Anchor	240 kg HV type
Anchor chain	350m
Anchor 2	240 kg HV type
Anchor chain	350m
Dinghy	1 Naumatec Mod. TL 650 - VOLVO Aquamatic D3-220 DPS 44 Knots
Deck crane	electric
Life raft	yes
Life raft (pers)	4x 12 people
Lifejackets	yes
Horn	yes
TV	Samsung
TV receiver	System SEATEL 4006
Satellite	yes
DVD player	yes
Sub-woofer	yes
Cockpit speakers	yes
Speakers in salon	yes
Speakers in cabin	yes



# EUROCRAFT EXPLORER 44

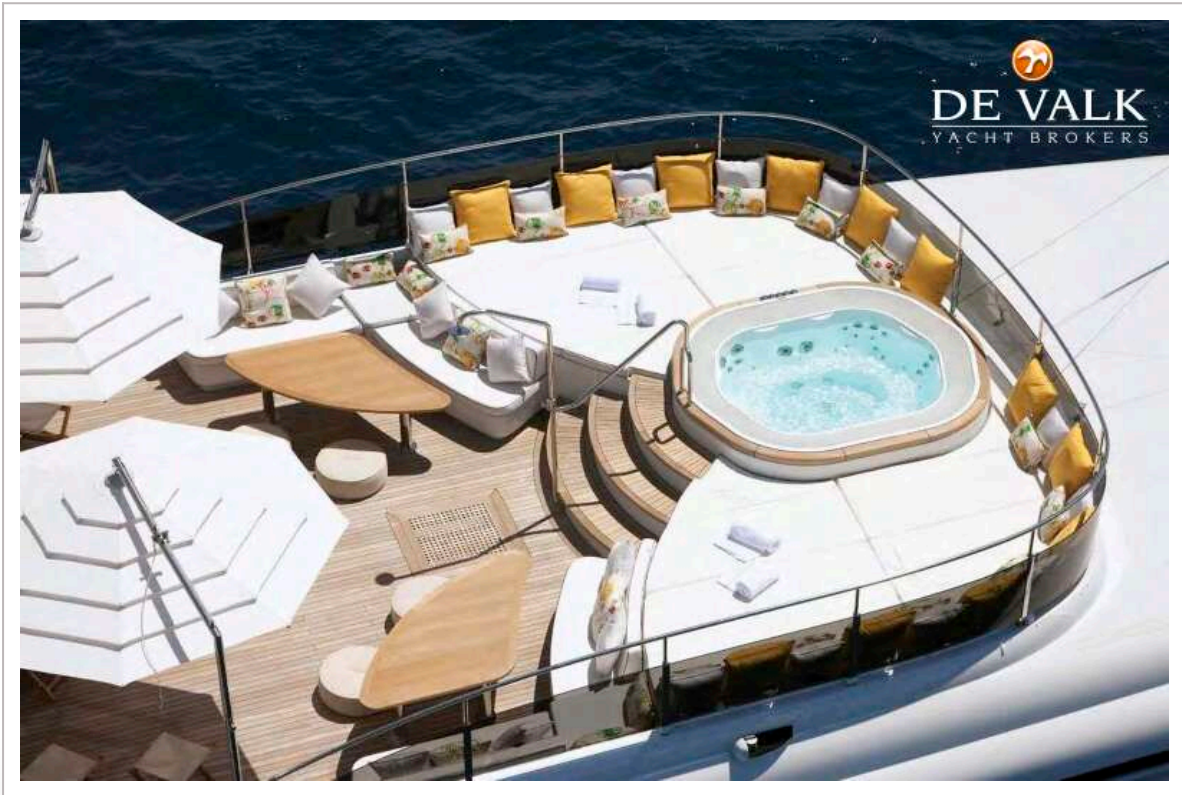
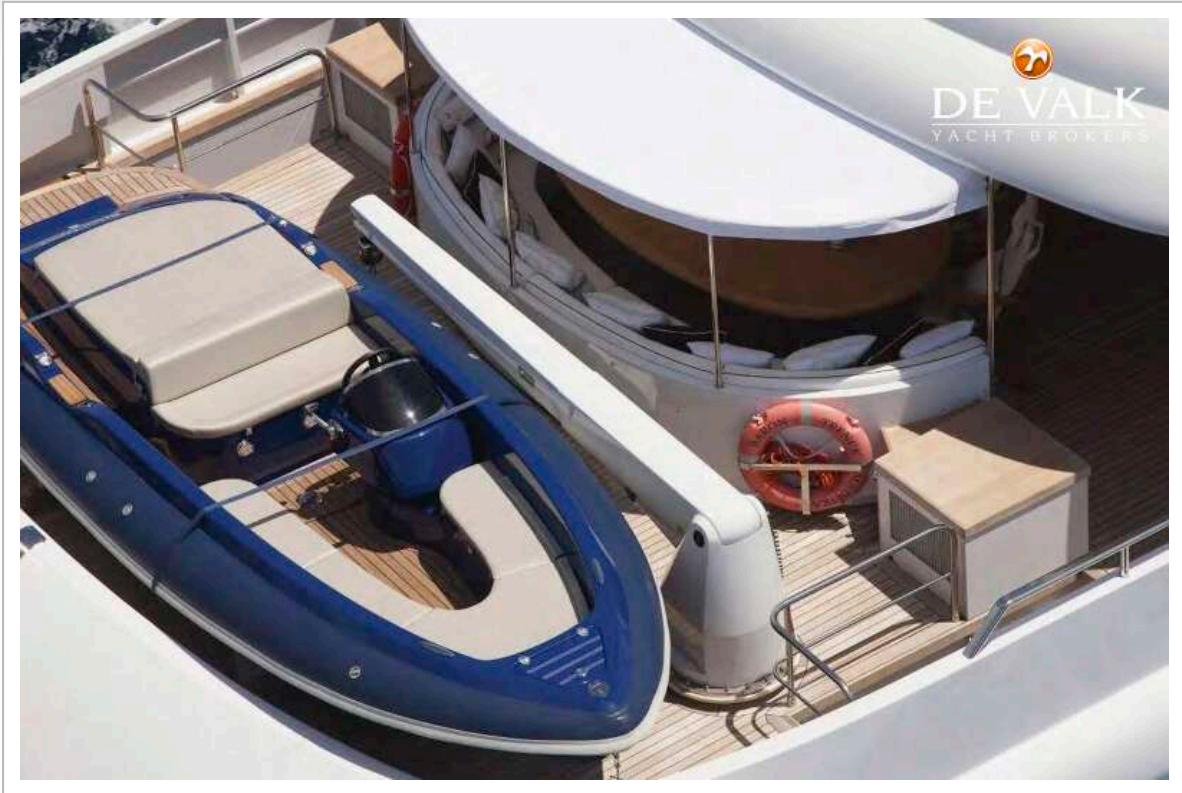




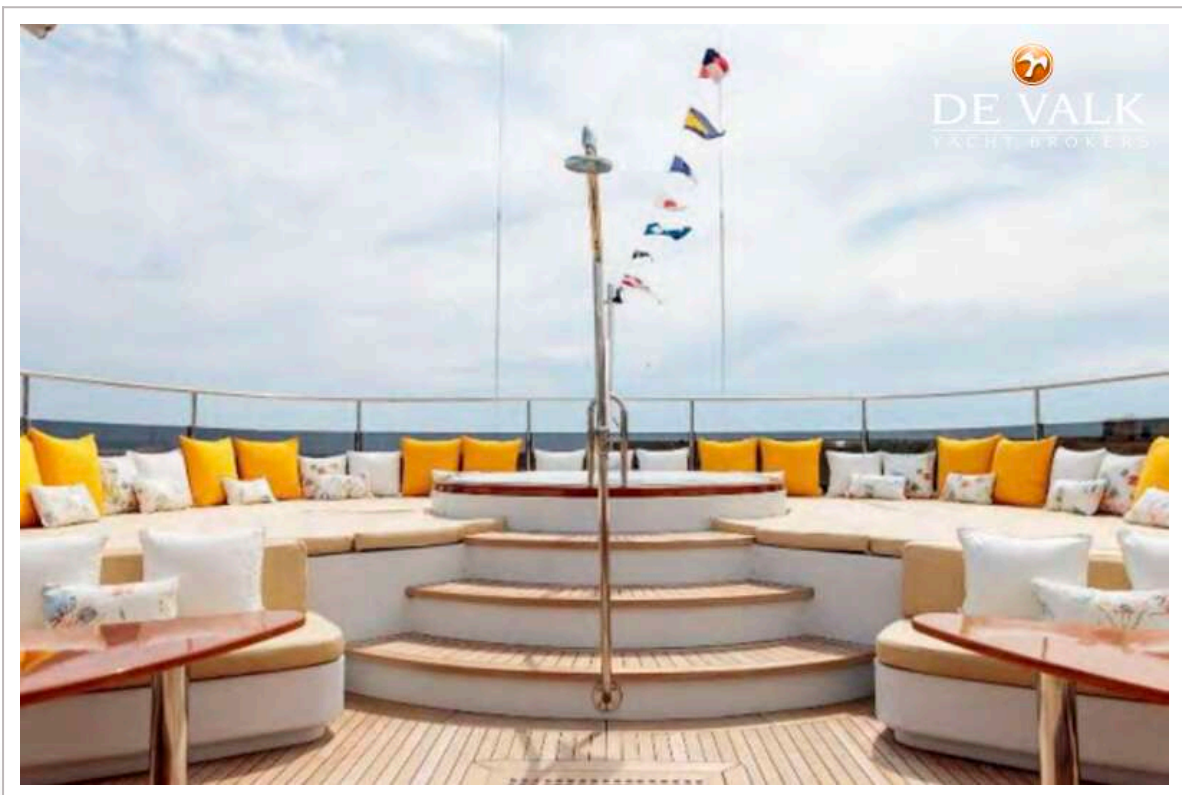
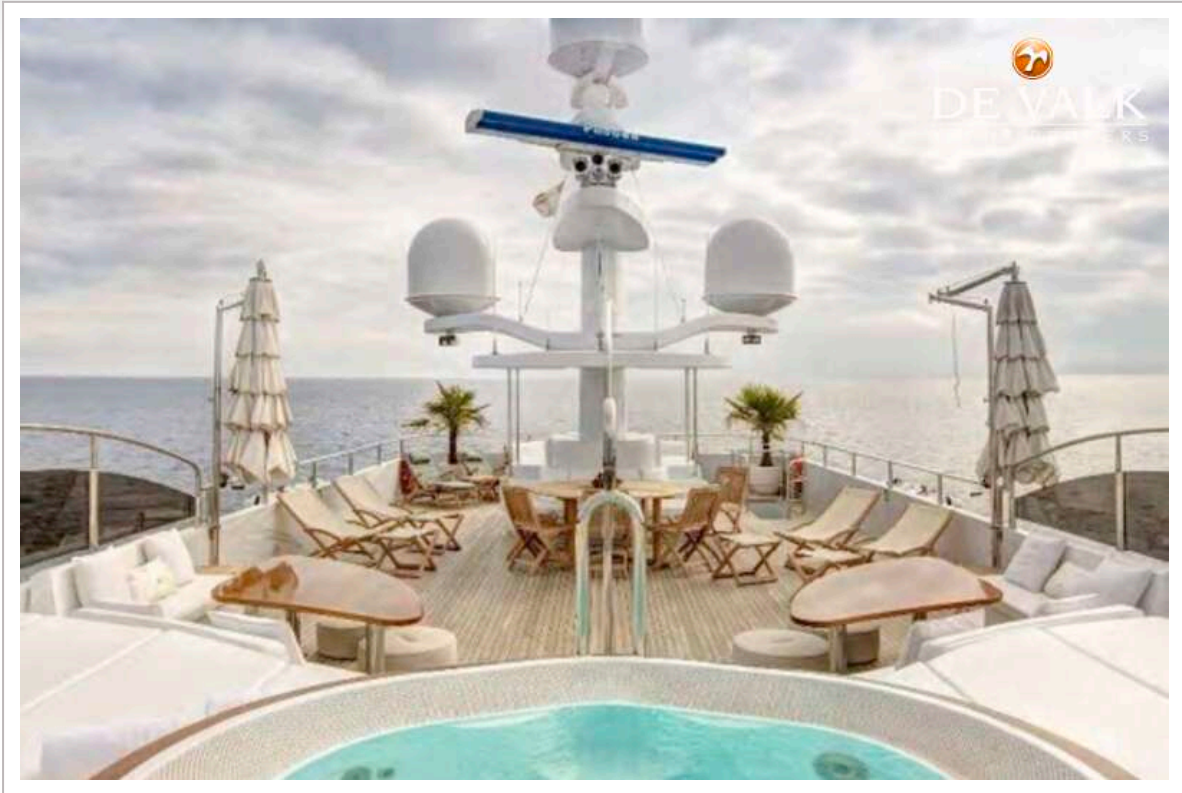
# EUROCRAFT EXPLORER 44



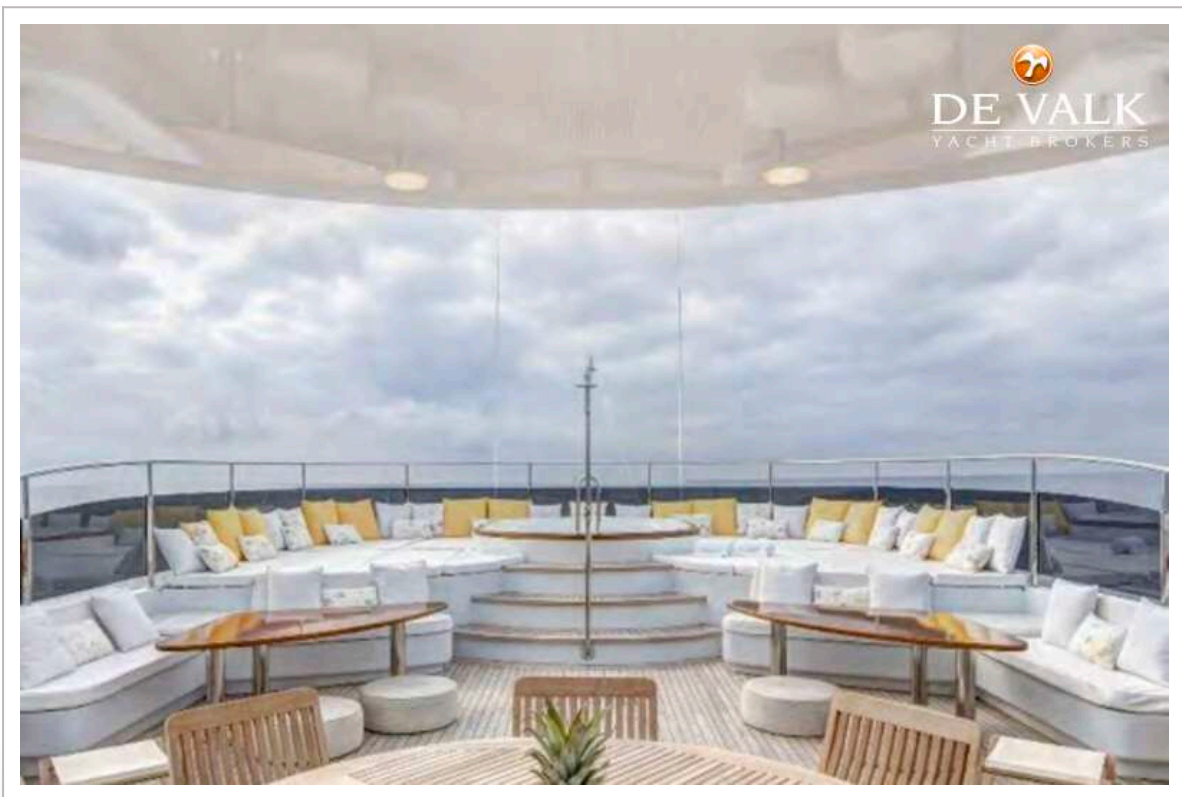
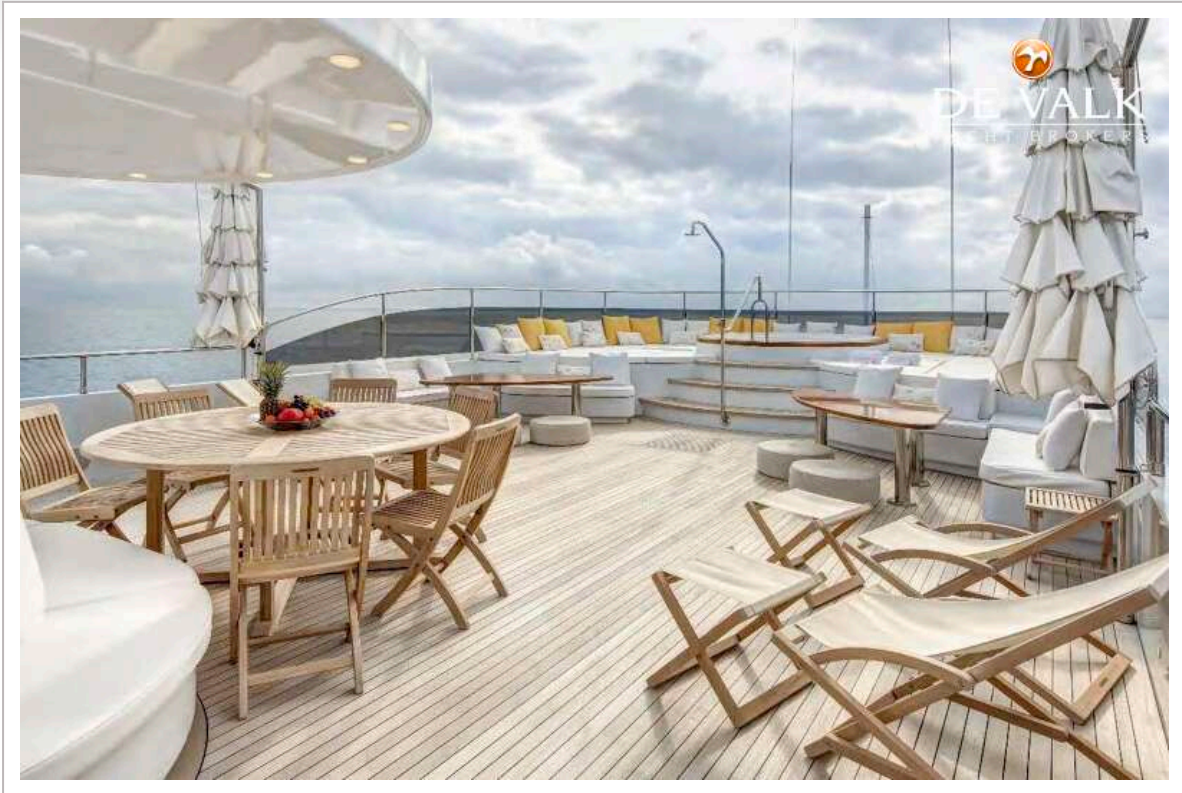
EUROCRAFT EXPLORER 44



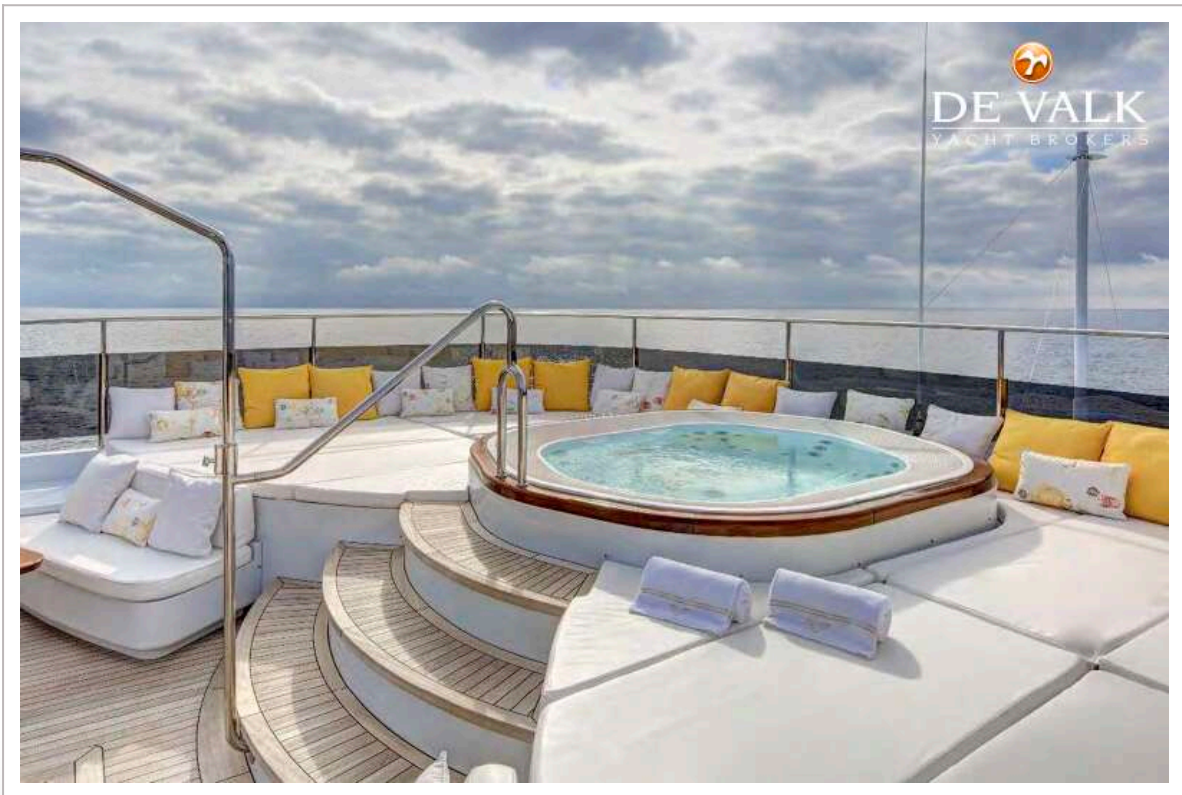
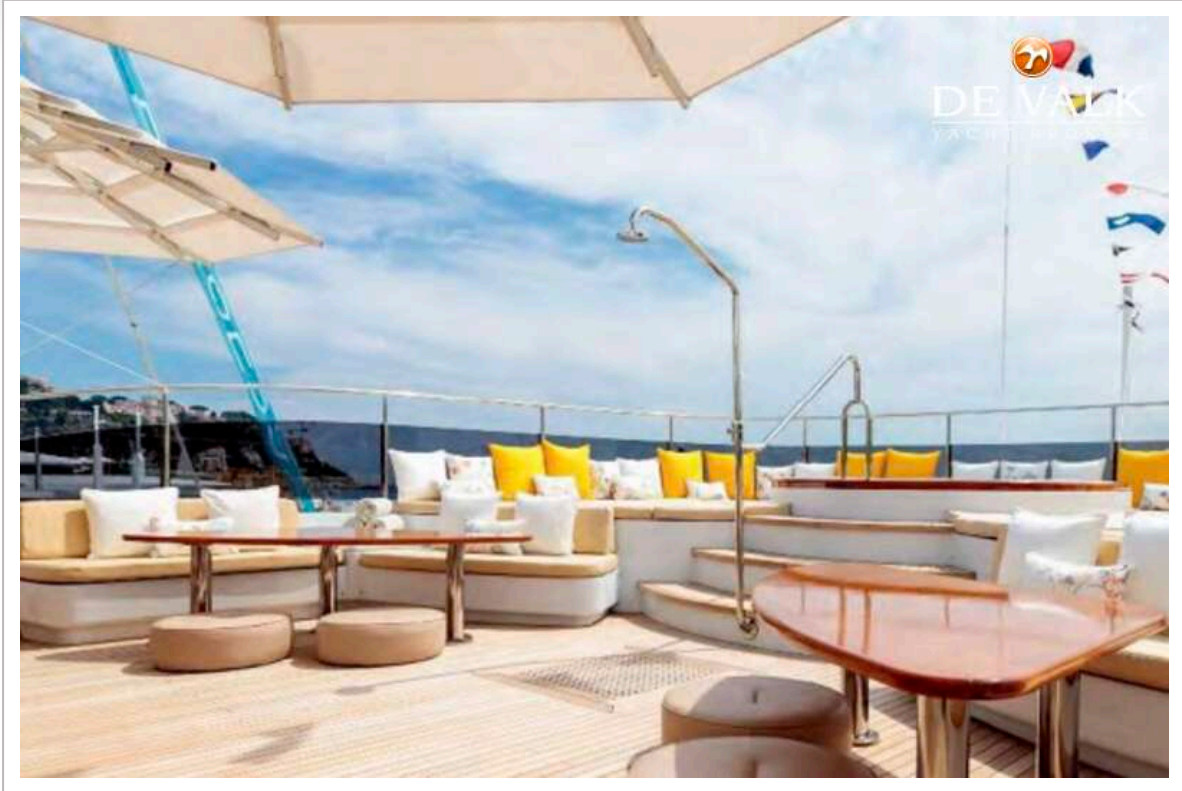
# EUROCRAFT EXPLORER 44



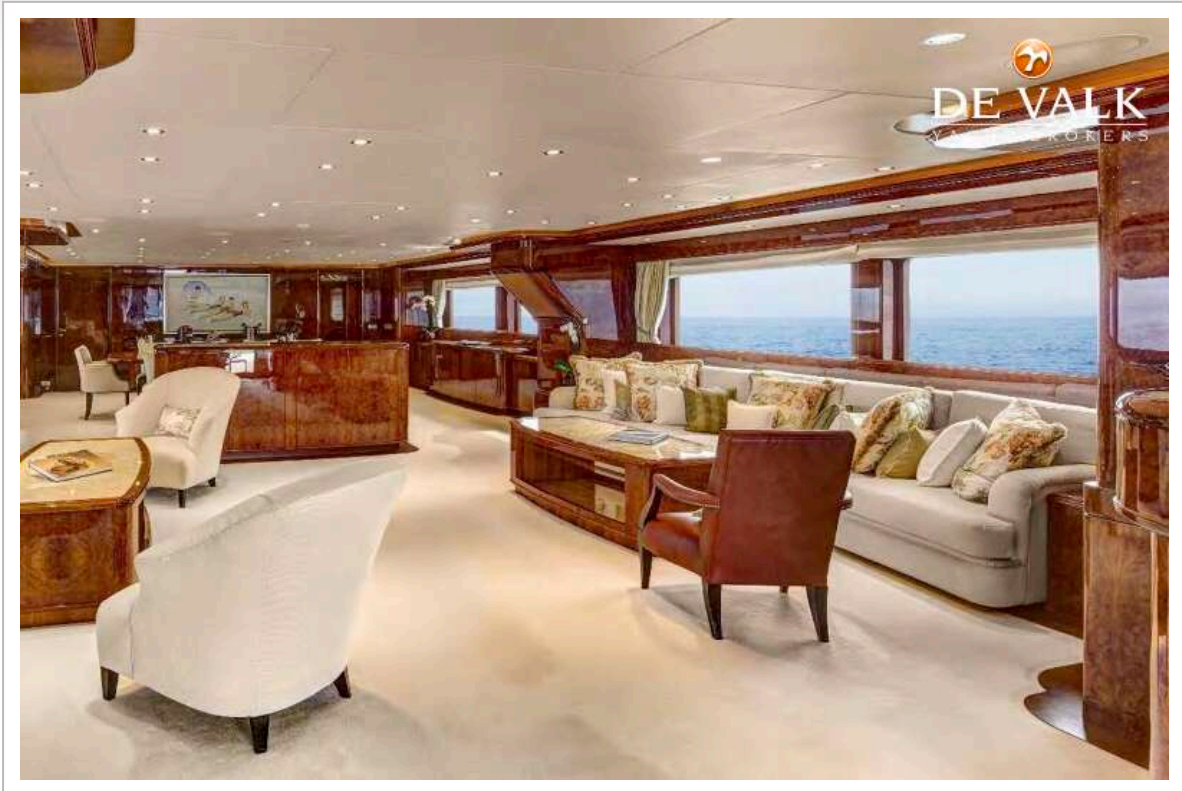
# EUROCRAFT EXPLORER 44



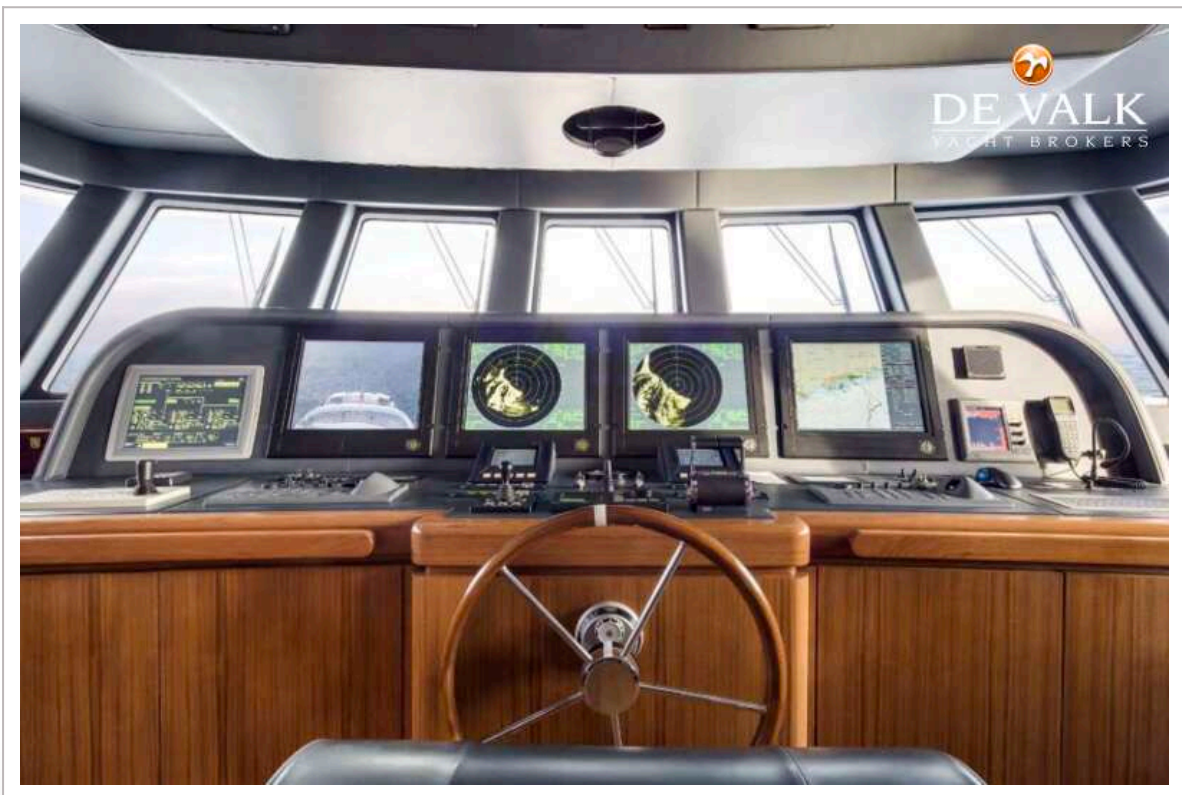
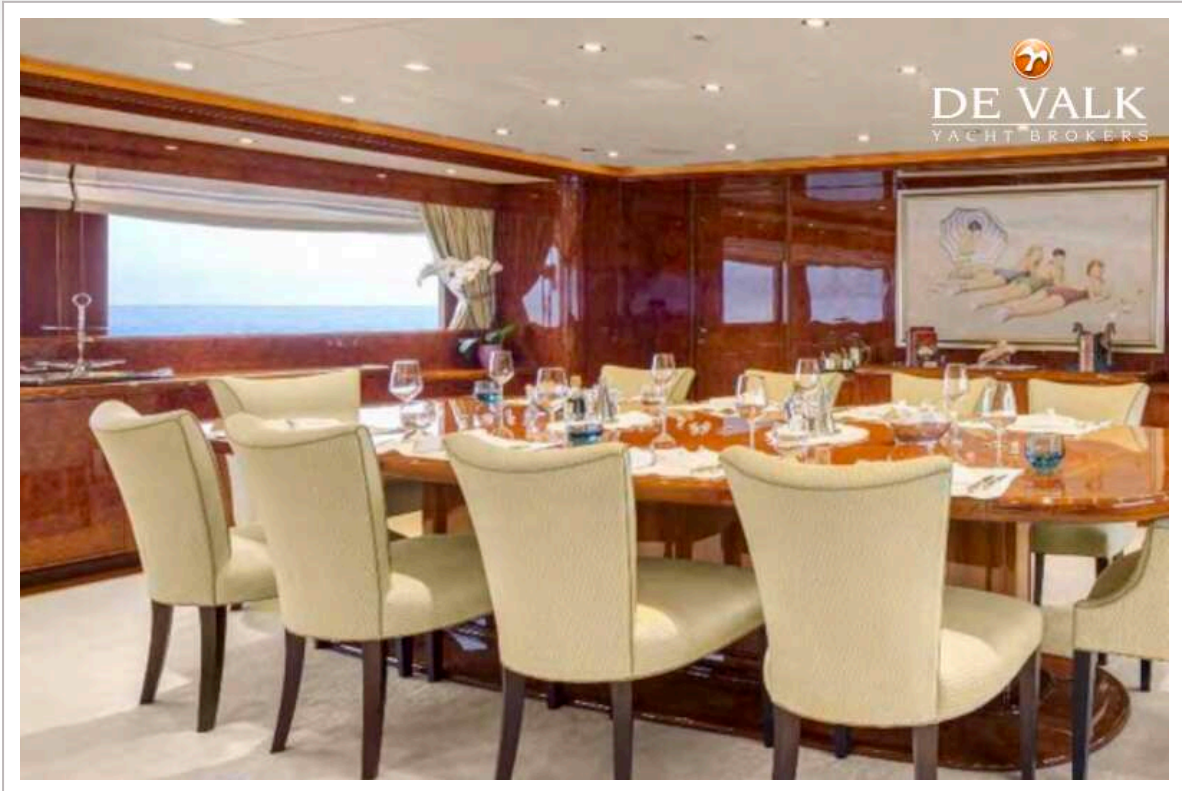
# EUROCRAFT EXPLORER 44



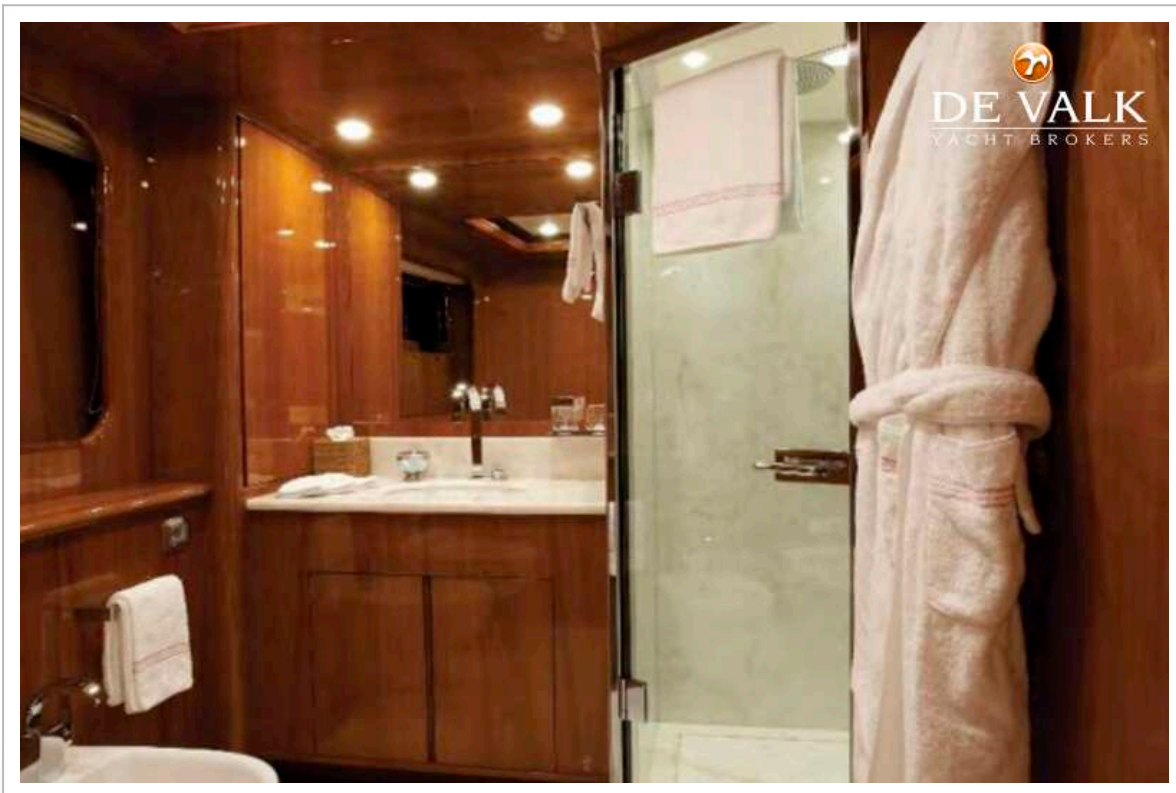
# EUROCRAFT EXPLORER 44



# EUROCRAFT EXPLORER 44

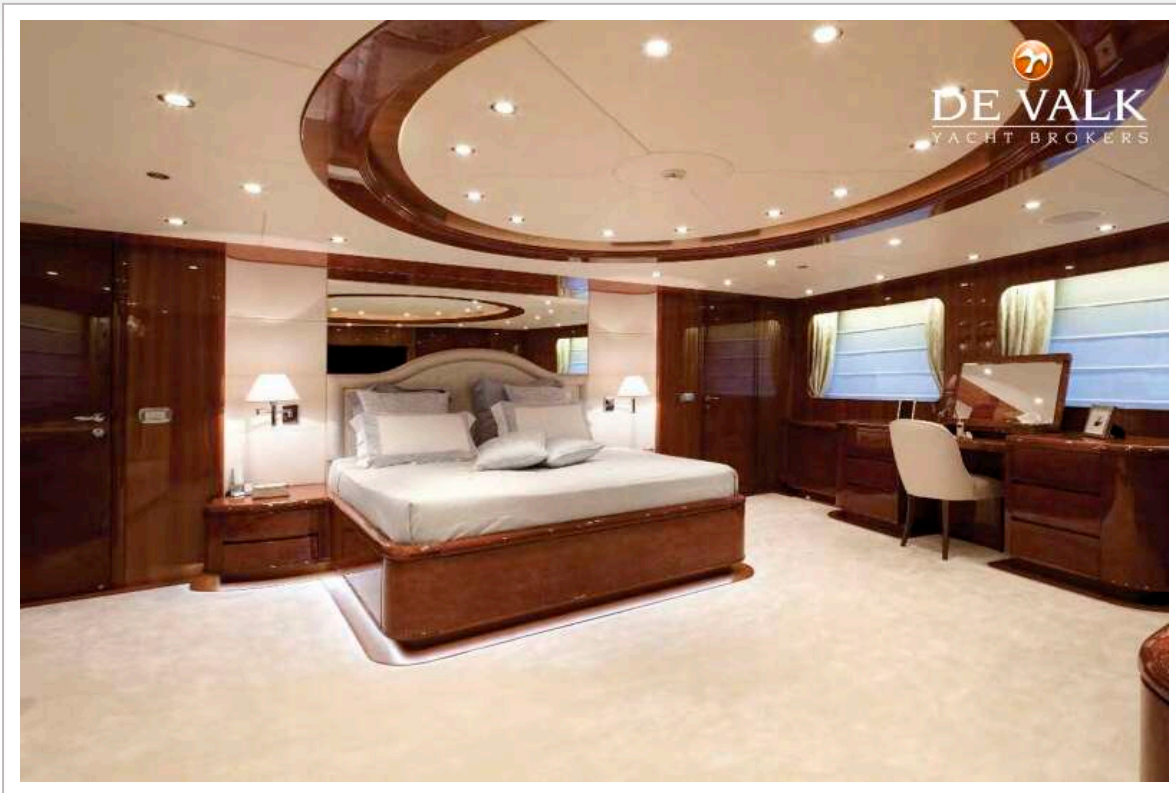


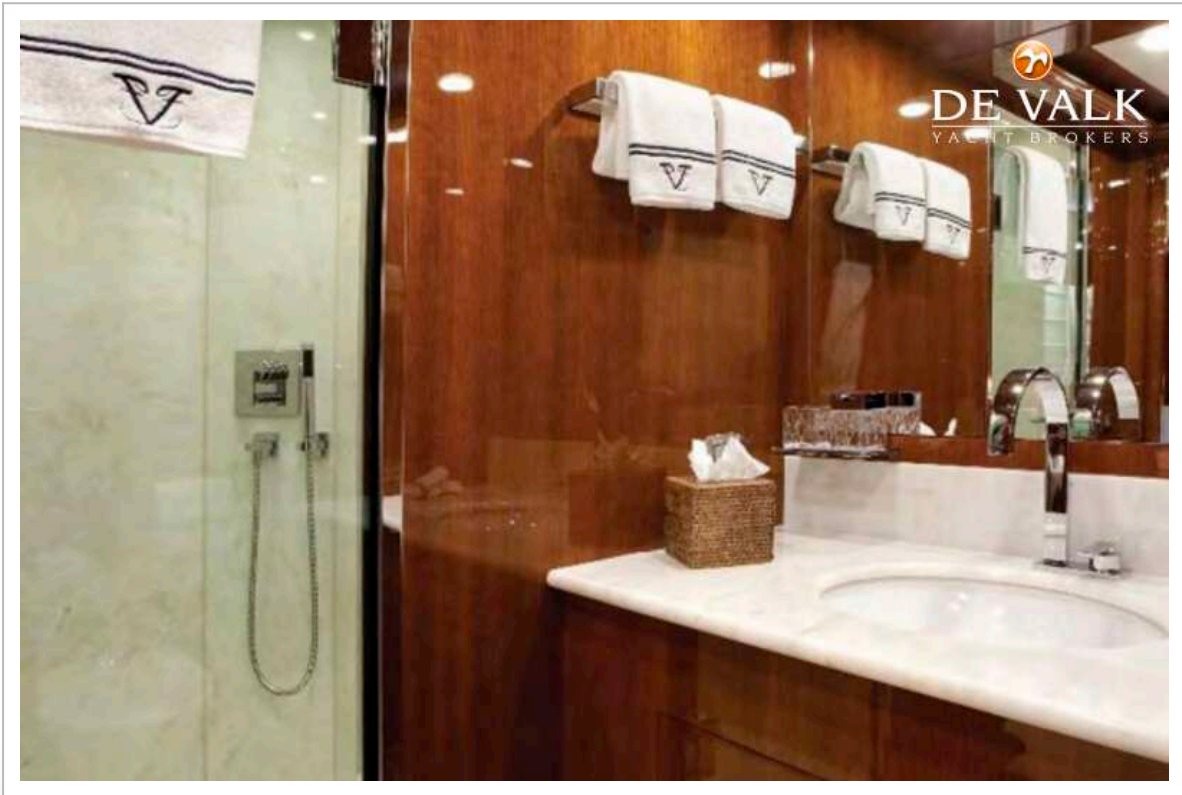
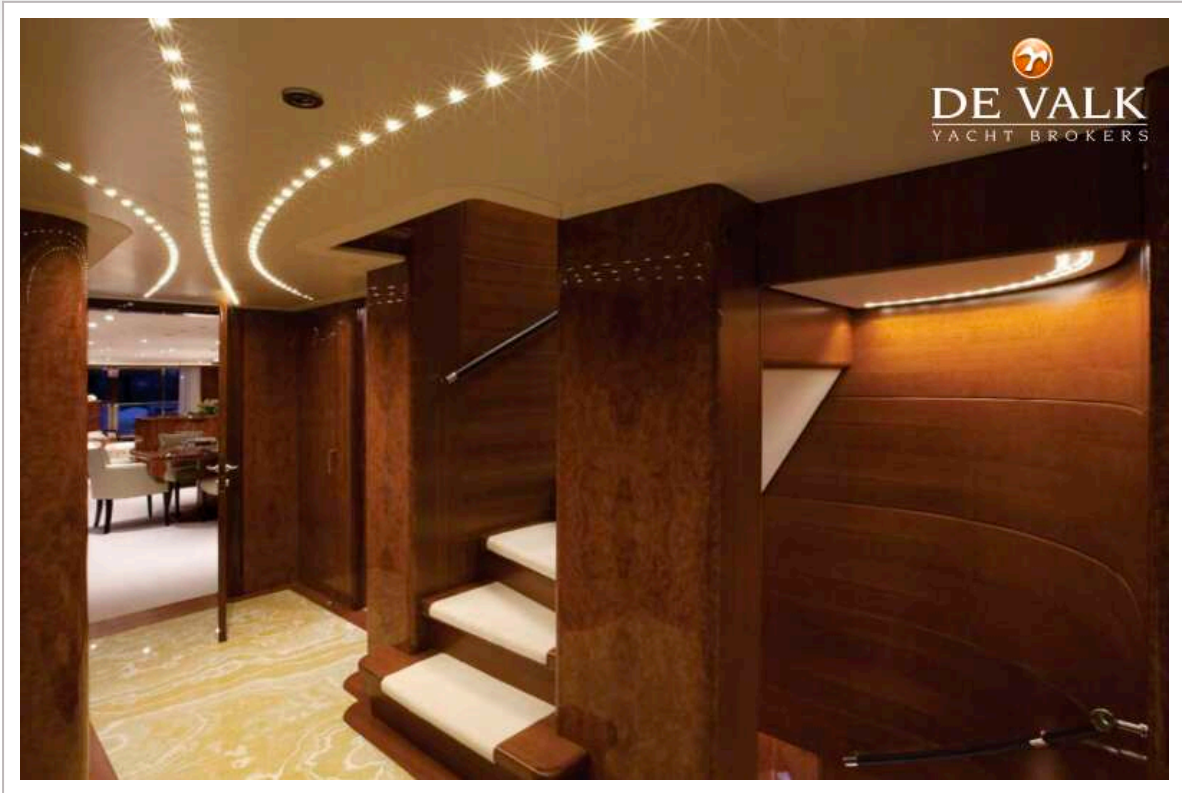
# EUROCRAFT EXPLORER 44



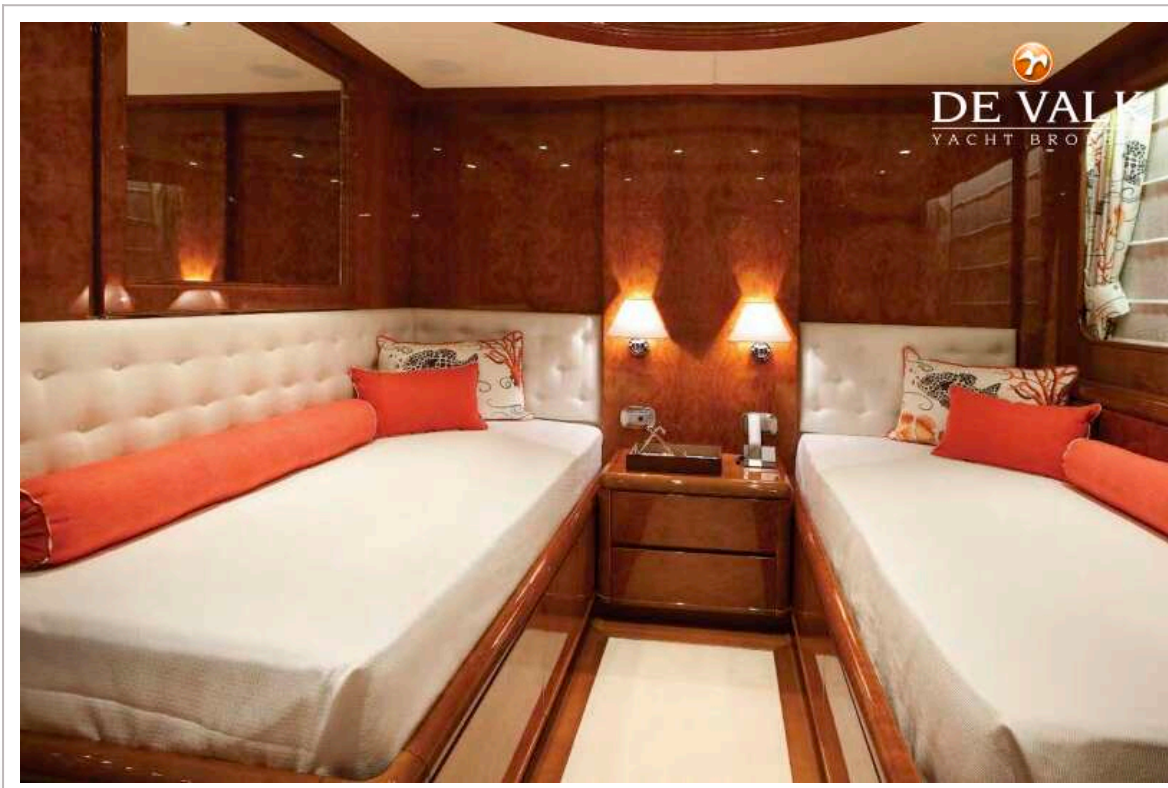


# EUROCRAFT EXPLORER 44

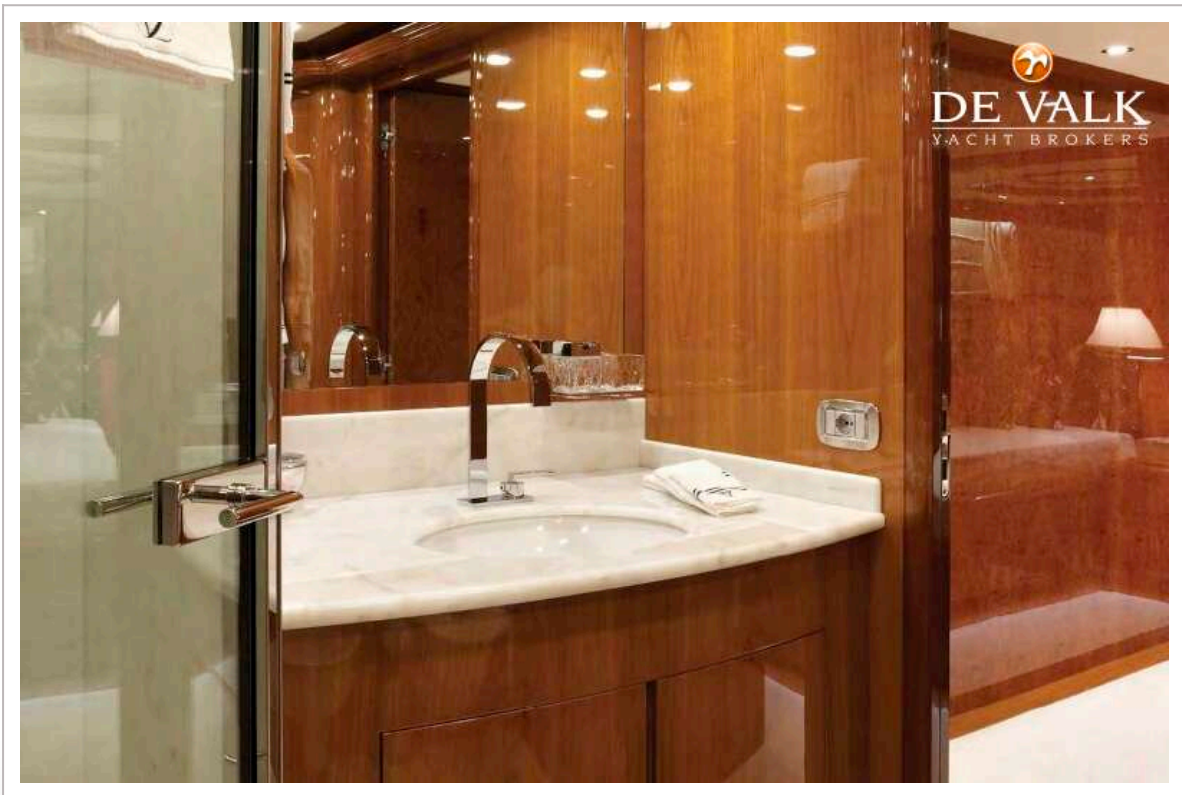
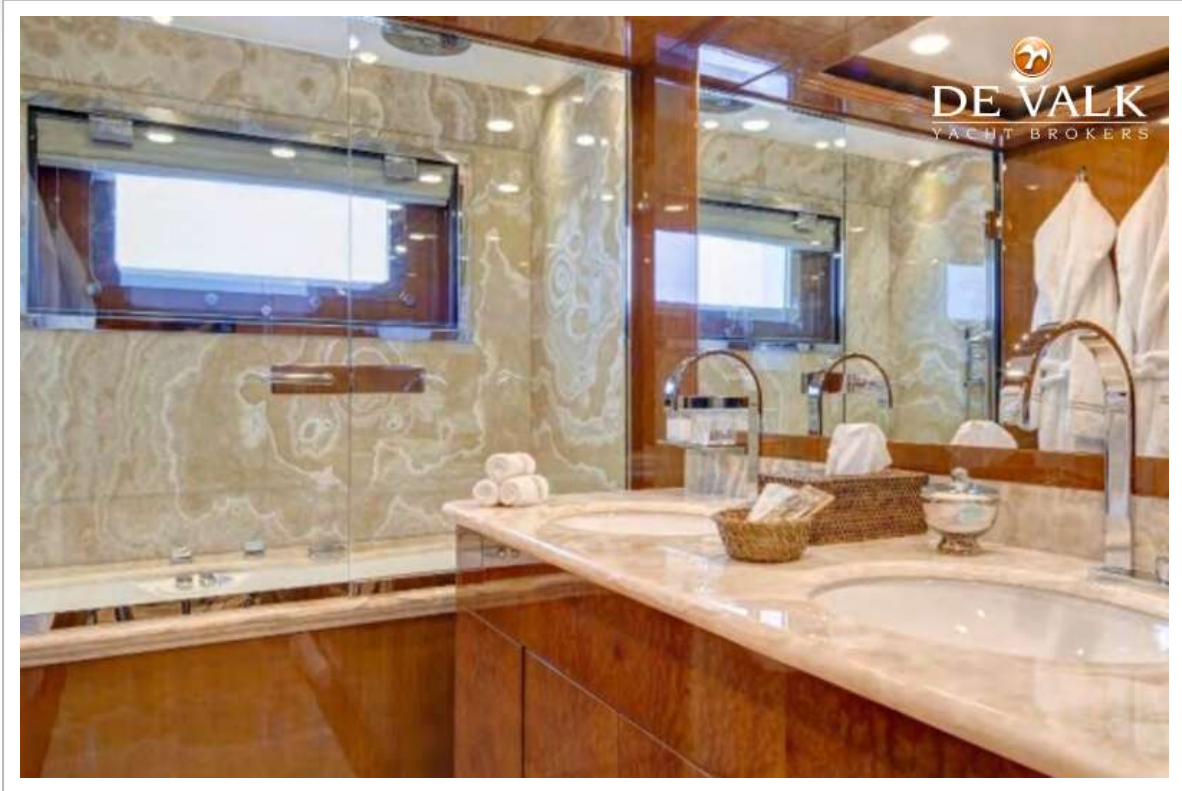




# EUROCRAFT EXPLORER 44



# EUROCRAFT EXPLORER 44



# EUROCRAFT EXPLORER 44



# EUROCRAFT EXPLORER 44

