



WAUQUIEZ PILOT SALOON 60

WAUQUIEZ PILOT SALOON 60

BROKER'S COMMENTS

This majestic Wauquiez PS 60 underwent a complete refit from masthead to keel bottom and from bow to transom. All repairs / refits were carried out to the highest possible level. No costs were spared. The refit started in March 2020 and was recently completed but there can be still room for wishes of the new owner to be carried out. Come and visit this iconic luxury yacht and convince yourself. The owner is a motivated seller and has reduced the price drastically to €495,000.-

Reinoud Bicker Caarten

SPECIFICATIONS

Dimensions	18.60 x 5.10 x 2.50 (m)	Builder	Chantier Wauquiez
Built	1994	Cabins	3
Material	GRP	Berths	8
Engine(s)	2 x Perkins Prima diesel	Hp/Kw	2 x 80 (hp), 58.88 (kw)
Asking price	€ 445.000 (VAT Paid)	Lying	

CONTACT

Sales office	De Valk Portugal	Telephone	+351 308 812321
Address	Edifício Administrativo - Ponta da Areia 8500 - 345 Portimão Portugal	E-mail	portugal@devalk.nl

DISCLAIMER

These particulars are given in good faith as supplied but cannot be guaranteed.



WAUQUIEZ PILOT SALOON 60

GENERAL

Model	WAUQUIEZ PILOT SALOON 60
Type	sailing yacht
LOA (m)	18,60
Beam (m)	5,10
Draft (m)	2,50
Air draft (m)	25,00
Year built	1994
Launched	1995
Builder	Chantier Wauquiez
Country	France
Designer	Ed Dubois
Displacement (t)	28
Ballast (tonnes)	8
Gross tonnage	40.6
CE norm	A
Hull material	GRP
Hull colour	Jotun Megagloss white 2022
Hull shape	round-bilged
Keel type	fin keel with bulb
Superstructure material	GRP
Deck material	GRP
Deck finish	teak Completely refurbished 2022
Superstructure deck finish	teak Completely refurbished 2022
Cockpit deck finish	teak Completely refurbished 2022
Antifouling (year)	Coppercoat new 2023
Dorades	3x with stainless steel air vent.
Window frame	aluminium
Window material	glass Laminated glass
Deckhatch	9 Goiot opening deck hatches
Portholes	aluminium 13 opening portholes in the hull topsides 4 opening in the cockp



WAUQUIEZ PILOT SALOON 60

Insulation	Balsa
Radar arch	non collapsible Stainless steel with solar panel
Fuel tank (litre)	stainless steel 500 L
Fuel tank 2 (litre)	stainless steel 500 L
Level indicator (fuel tank)	VDO 2x
Freshwater tank (litre)	stainless steel 1200 L in four tanks
Level indicator (freshwater)	yes
Wheel steering	2x mechanical in cockpit and 1x hydraulic in pilot saloon
Inside helm position	In the pilot saloon to port side
Outside helm position	Double mechanical wheel
Emergency tiller	stainless steel
More info on hull	Sandwich with reinforcement stringers and frames
More info on paintwork	2022 new sprayed hull topsides, superstructure, mast and boom
Extra info	All the teak decks are fully refurbished.
Extra info	All seams have been deepened and re-caulked with TDS caulking.

ACCOMMODATION

Cabins	3
Berths	8
Crew cabin	Access by forward deck hatch. New Jabsco toilet, shower, sink
Crew berths	V berth with infill. New grey vinyl fabric.
Interior	maple Split level saloon. galley and round seat with lowering table
Layout	Deck saloon round seat.
Floor	carpet New grey tiles
Aft deck	With access to fender lockers and aft garage
Pilot house/deck saloon	Helm and nav. centre to port large round seat with dining table.
Saloon	Upper round seat and lower round seat
Headroom saloon (m)	1.95 m / 2.75 m
Heating	Reverse cycle air conditioning
Air-conditioning	New chiller with 5 heat exchangers.



WAUQUIEZ PILOT SALOON 60

Navigation center	Helm with Micro Commander engine controls.
Chart table	yes
Aft Cabin	2 symmetric double bed en-suite.
Dinette to convert into berth	The lower round seat can be converted into a double berth
Galley	To starboard side along.
Countertop	corian 2x grey
Sink	stainless steel Double
Cooker	calor gas 4 ring Force 10 with oven. 2 ring electric.
Oven	Gas and electric/microwave
Gas alarm	yes
Microwave/oven combi	Sharp
Fridge	Stainless-steel front loaded large and small in galley
Hot water system	80L boiler with double coil for both engines.
Water pressure system	yes
Manual and/or foot pump	yes
Dishwasher	yes
Kettle	yes
Coffee maker	yes
Crockery	yes
Owners cabin	twin single En-suite in front of the saloon
Bed length (m)	1.95 m all
Wardrobe	In all 3 cabins
Bathroom	3x with sliding round doors
Toilet	3x electric and 1x Jabsco manual
Toilet system	Electric
Wash basin	4x
Shower	4x
Guest cabin 1	Two single beds in forward cabin
Bed length (m)	1.95 m
Wardrobe	yes
Bathroom	yes
Toilet	yes



WAUQUIEZ PILOT SALOON 60

Toilet system	Electric
Wash basin	yes
Shower	With round sliding door
Guest cabin 2	Double starboard aft
Bed length (m)	1.95 m
Wardrobe	yes
Bathroom	yes
Toilet	yes
Toilet system	Electric
Wash basin	yes
Shower	yes
Guest cabin 3	Double aft to port.
Bed length (m)	1.95 m
Wardrobe	yes
Bathroom	yes
Toilet	yes
Toilet system	Electric
Wash basin	yes
Shower	With sliding round door
Extra info	All plumbing and all taps are new
Crew cabin(s)	One with access hatch on the fore deck
Bathroom (crew)	yes
Toilet (crew)	Jabsco new
Toilet system	Manual
Wash basin	yes
Shower (crew)	yes
Washing machine	Top loaded Candy

MACHINERY

No of engines	2
Make	Perkins



WAUQUIEZ PILOT SALOON 60

Type	Prima
HP	80
kW	58.88
Fuel	diesel
Year of overhaul	2022. both heads off. new valve seats and cups etc.
Maximum speed (kn)	9,5
Cruising speed (kn)	8,5
Consumption (l/hr)	9
Range (nm)	900
Engine cooling system	Heat exchangers
Drive	shaft
Shaft seal	2x Volvo Penta stuffing box. 2022
Engine controls	electrical Micro Commander from cockpit and inner helm 2022
Gearbox	mechanical
Propeller type	feathering 2x Max Prop
Propeller blades	3x
Propeller shaft material	Bronze
Shaft lubrication	Water. New highlube cutlass bearings
Manual bilge pump	yes
Electric bilge pump	3x
Bilge alarm	yes
Electrical installation	Fully renewed 20-21-22-23
Generator	Fisher Panda 10kVA
Running hours generator	420 h
Batteries	8x Victron 165Ah (2019)
Start battery	2x Optima red top 50Ah
Generator battery	1x Optima Red top 50Ah
Battery monitor	To inner helm for all groups
Battery charger	Mastervolt Charge master 12/100/3
Battery charger/inverter	Victron Phoenix Multi 24/3000/70
Solar panel	450W with Victron MPPT controller
Shorepower	2x



Watermaker

Spectra Catalina

NAVIGATION

Compass

3x Cassens & Plath Wauquiez

Electric compass

For the autopilot

Depth sounder/log

Raymarine i80

Windset

Raymarine i80

Repeater

Raymarine i80

VHF

Raymarine with two hand sets

Autopilot

Hydraulic with Raymarine i80 controls

Radar

Raymarine

Radar/GPS/plotter

2x Raymarine E series hybrid touch

AIS transceiver

Raymarine transceiver to plotters and i80 repeater

Navigation lights

All new LED

EQUIPMENT

Sprayhood

New 2022 grey

Bimini

New 2022 grey

Cockpit cushions

White vinyl

Transom door

Hydraulic lowering converting into bathing platform

Gangway

Aluminium foldable

Anchor

CQR Plough 50 kg CQR

Anchor chain

60 m 14 mm

Anchor 2

Brittany 25 kg Brittany 5 m chain and 30 m warp

Windlass

electrical Lofrans 4400 with Capstan

Capstan

yes

Dinghy

Rib Goldenship 340

Outboard

Suzuki 5 hp

Davits

aluminum Stowable

Sea railing

stainless steel

Grab rail (superstructure)

stainless steel



WAUQUIEZ PILOT SALOON 60

Railing side opening gates	2x
Pushpit	Stainless steel
Pulpit	Stainless steel with opening transom gate
Life raft (pers)	6 p recent service
Last life raft survey	2023
Lifejackets	yes
Safety harness	yes
Wiper	2x to front window
Horn	Electric twin horn to spreader
Fenders	yes
Mooring lines	yes
Tools	yes
TV	yes
Radio-cd player	Alpine 2022
DVD player	Integrated in TV
Cockpit speakers	Fusion 2023
Speakers in salon	4x 2022
Clock - barometer	yes
Fire extinguisher	yes
Latest extinguisher survey	2023
Auto extinguisher system	In engine room and galley

RIGGING

Rigging	sloop-cutter
Standing rigging	Rod 2007, fully dismantled, polished and NDT checked 2022
Material mast	aluminium coated New Jotun Megagloss paint system
Spreader	3 sets. the lower ones with LED spreader lights and horn
Mainsail	Hydraulic in-mast furling 91 m2 Serviced and washed 2022
Stoway mast	yes
Cutterstay	yes

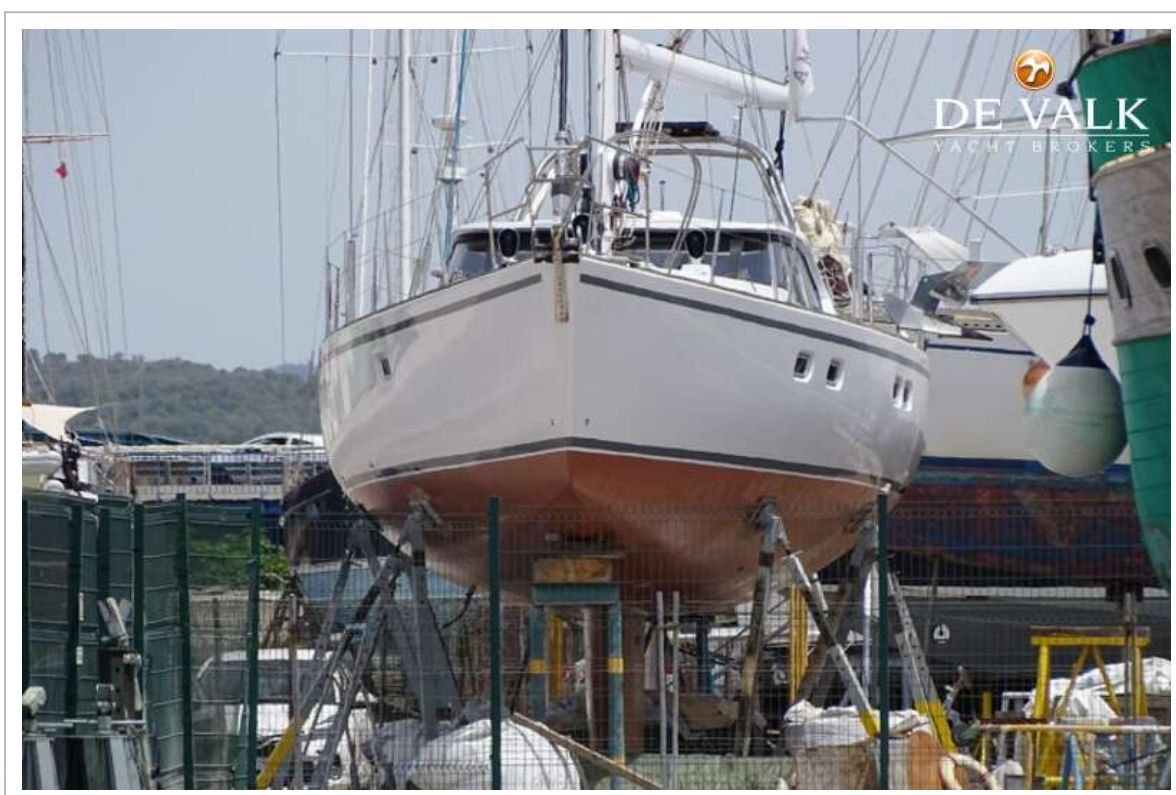


WAUQUIEZ PILOT SALOON 60

Jib	sails from 2015 as good as new Self-tacking stay jib 55 m2 serviced and washed 2024 condition.
Genoa	from 2015 as good as new 125 m2 serviced and washed 2024
Genoa furler	Reckmann hydraulic
Cutter furler	Reckmann hydraulic
Spinnaker	from 2015 little used and as good as new 300m2 serviced and washed with new chute 2024
Boomvang	hydraulic Navtec
Primary sheet winch	Hydraulic cylinder in boom
Secondary sheet winch	2x Harken 56.2 hydraulic
Genoa sheetwinches	2x Harken 890 hydraulic
Halyard winches	2x Harken 56.2 manual to mast
Spi-pole	aluminium Fitted to the mast on full track. 2022 new painted.



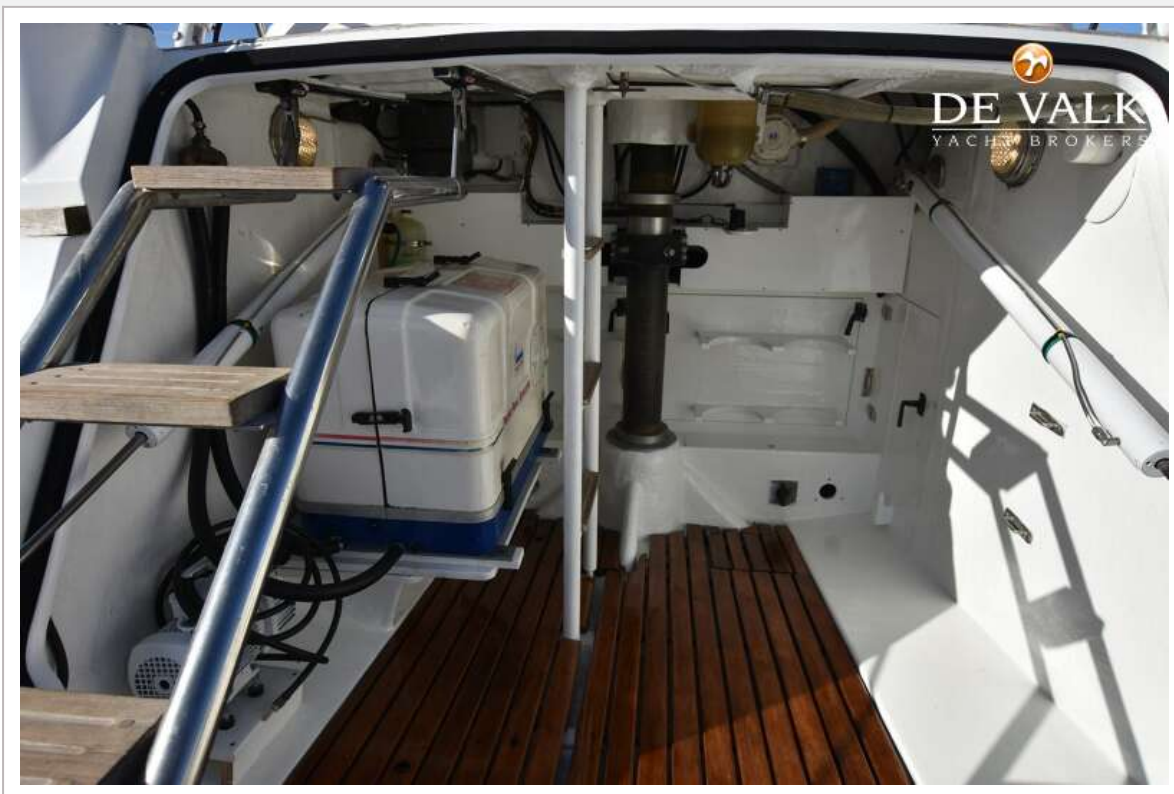
WAUQUIEZ PILOT SALOON 60



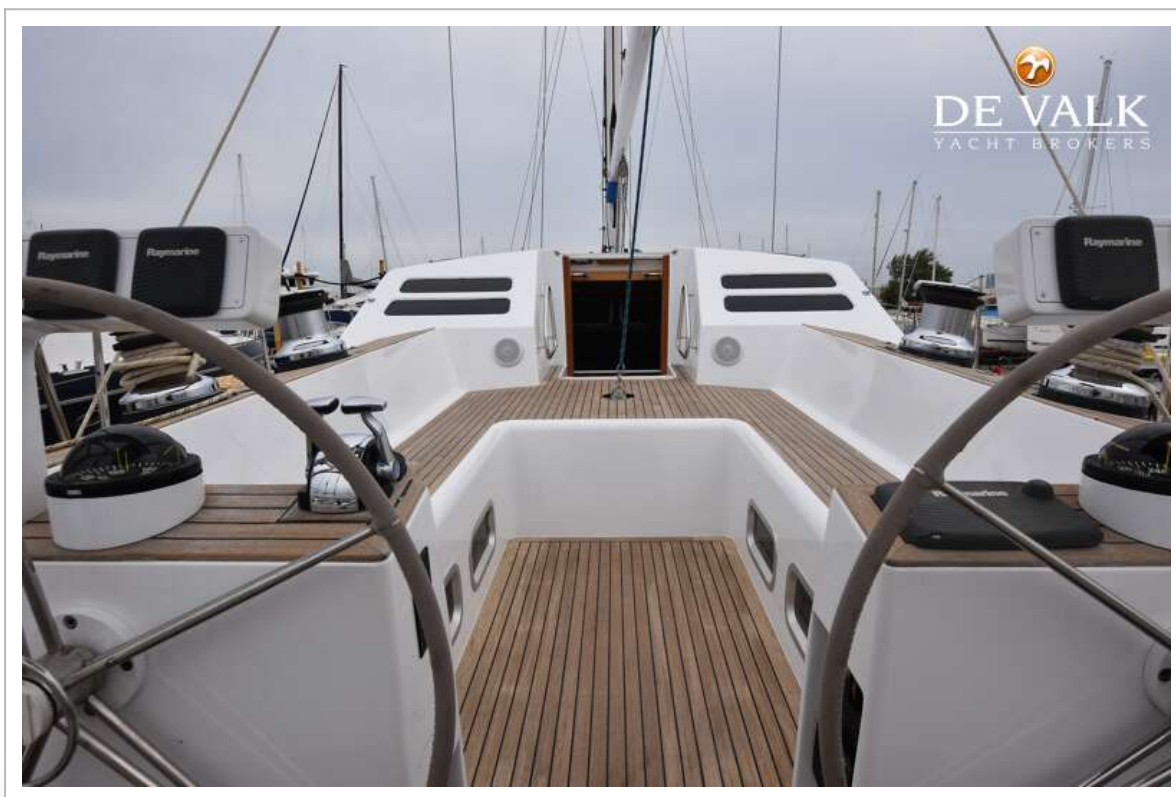
WAUQUIEZ PILOT SALOON 60



WAUQUIEZ PILOT SALOON 60



WAUQUIEZ PILOT SALOON 60



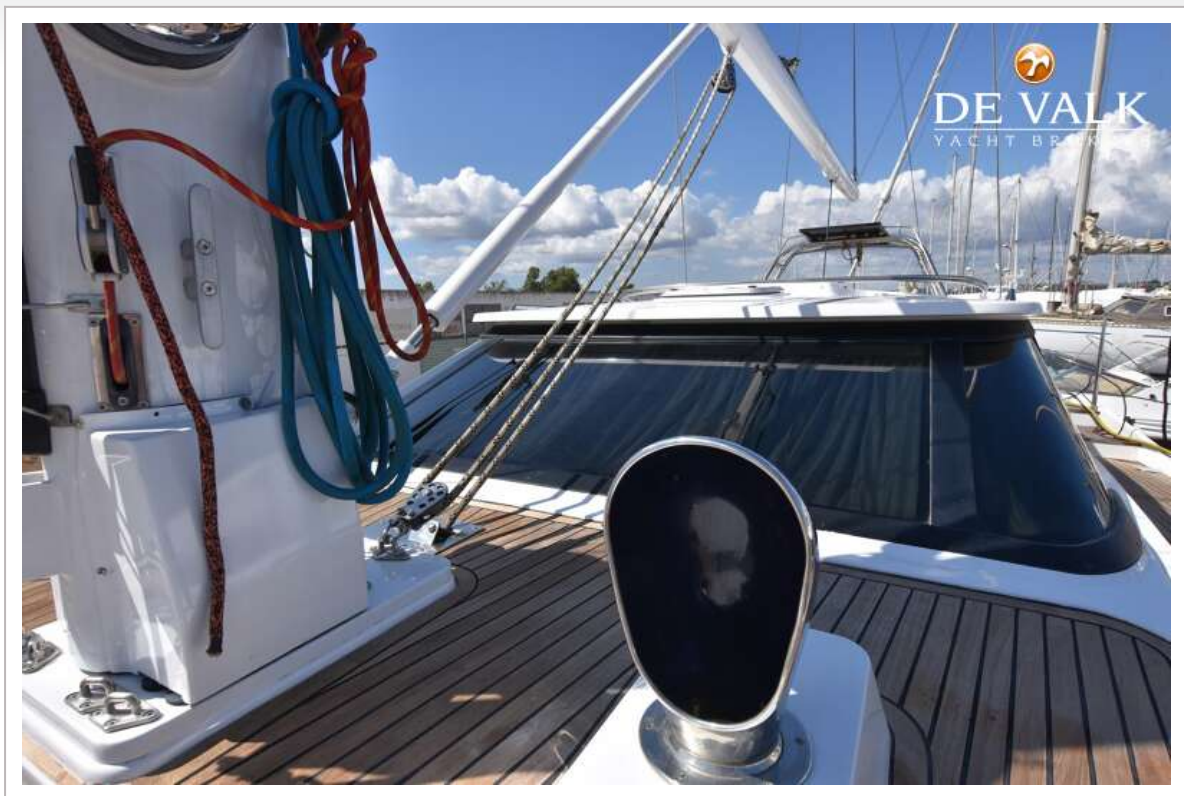
WAUQUIEZ PILOT SALOON 60



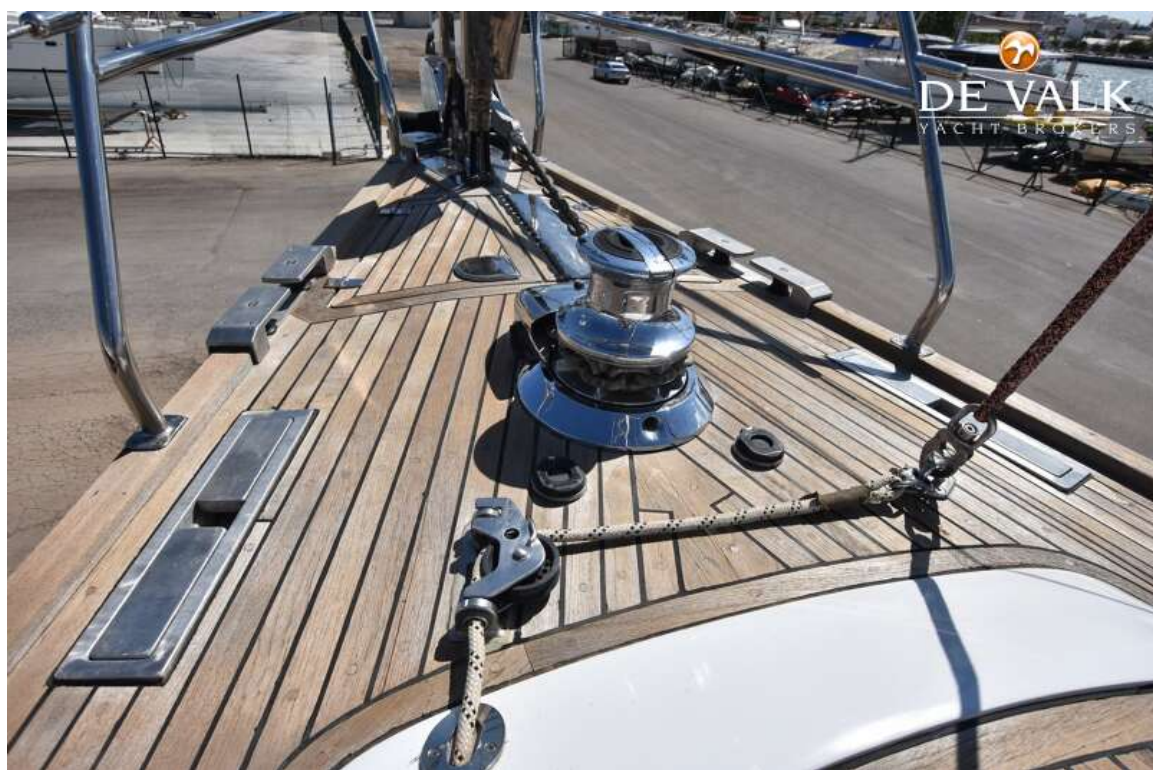
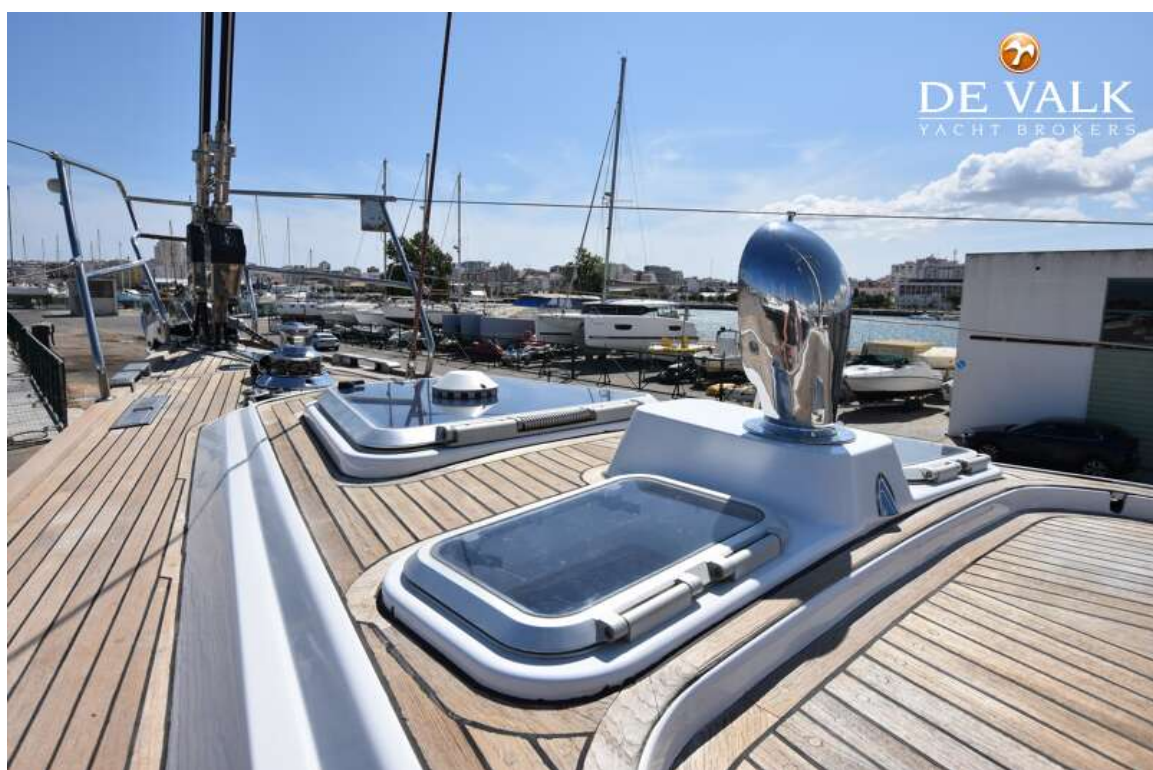
WAUQUIEZ PILOT SALOON 60



WAUQUIEZ PILOT SALOON 60



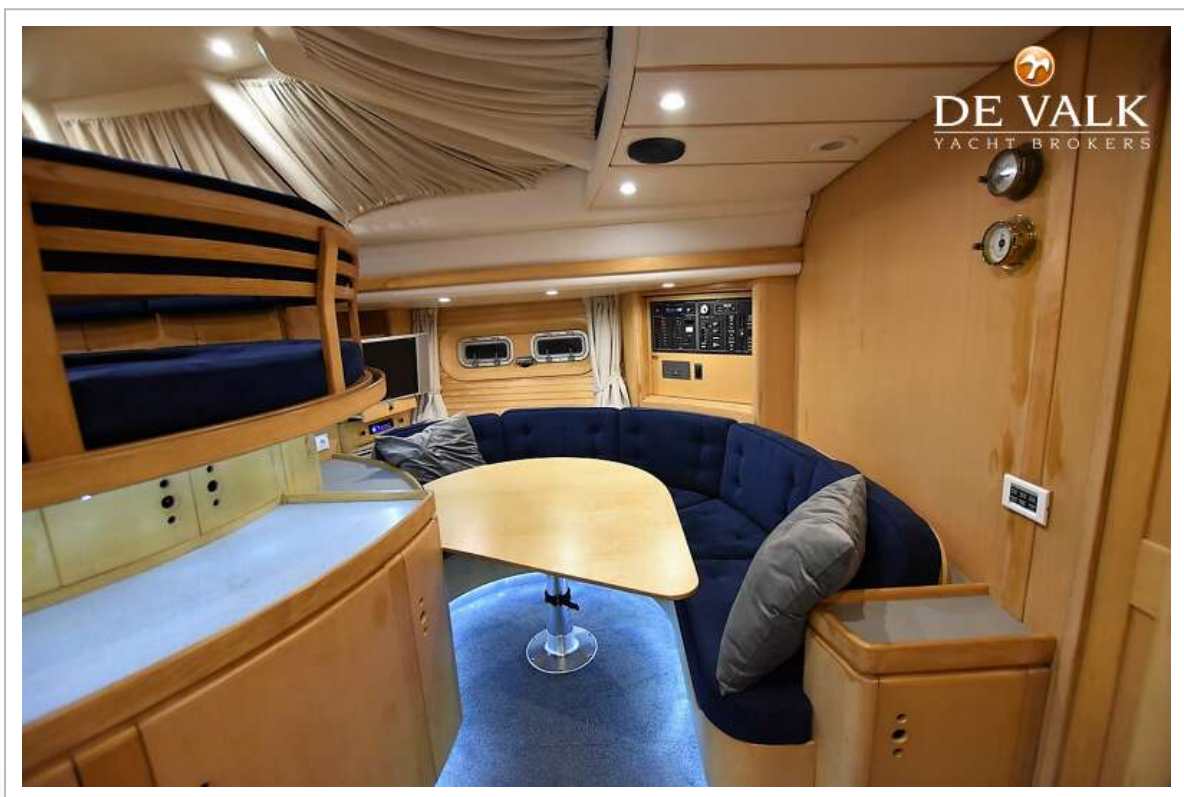
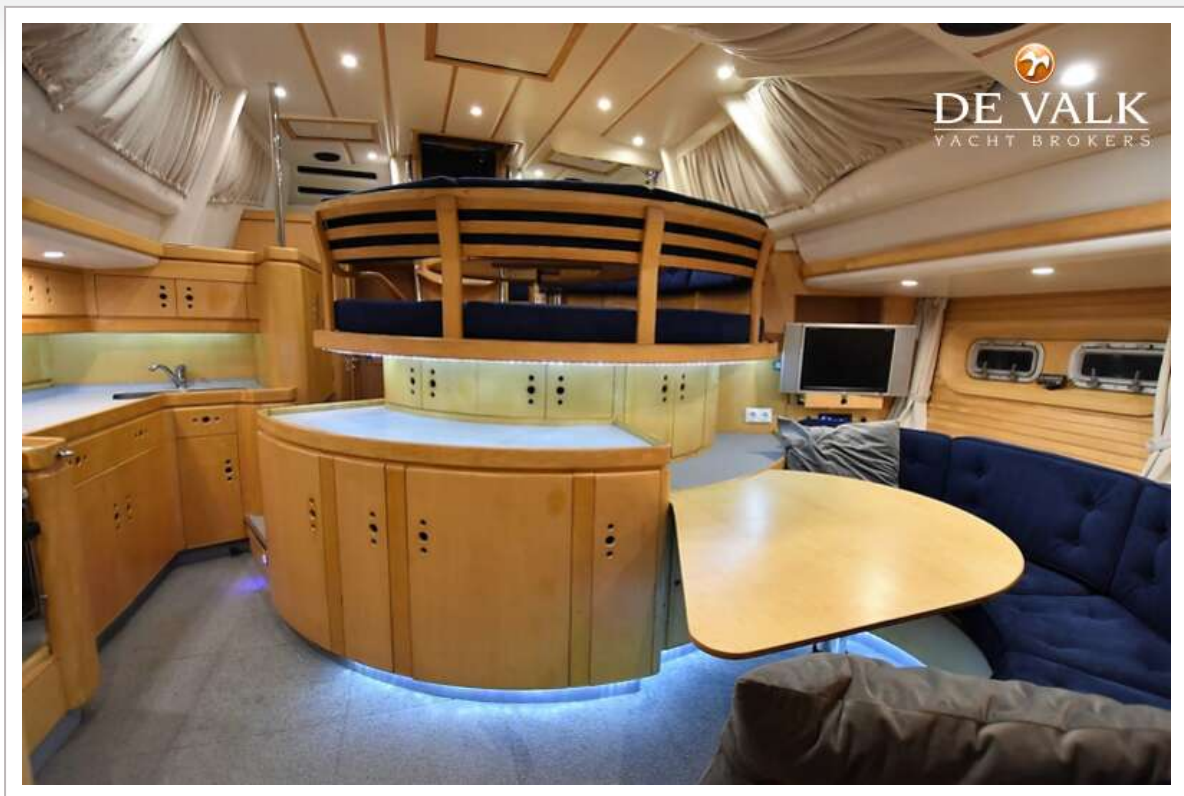
WAUQUIEZ PILOT SALOON 60



WAUQUIEZ PILOT SALOON 60



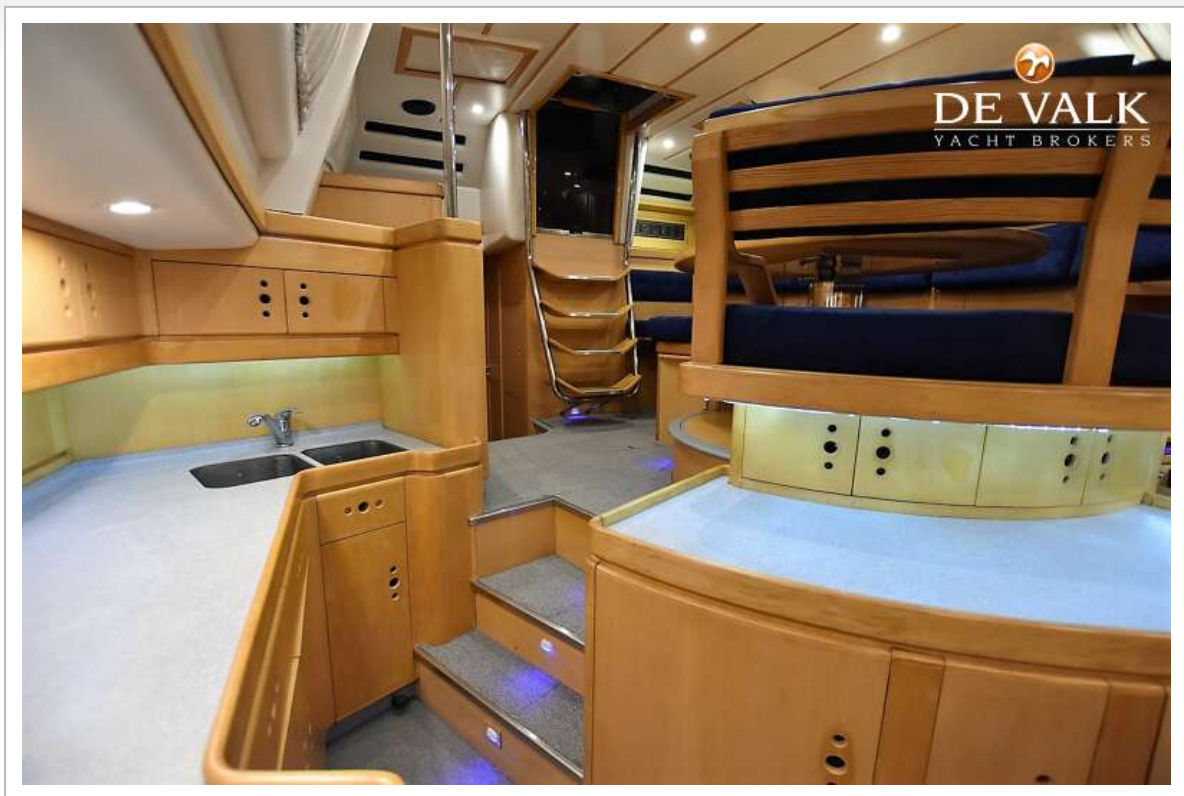
WAUQUIEZ PILOT SALOON 60



WAUQUIEZ PILOT SALOON 60



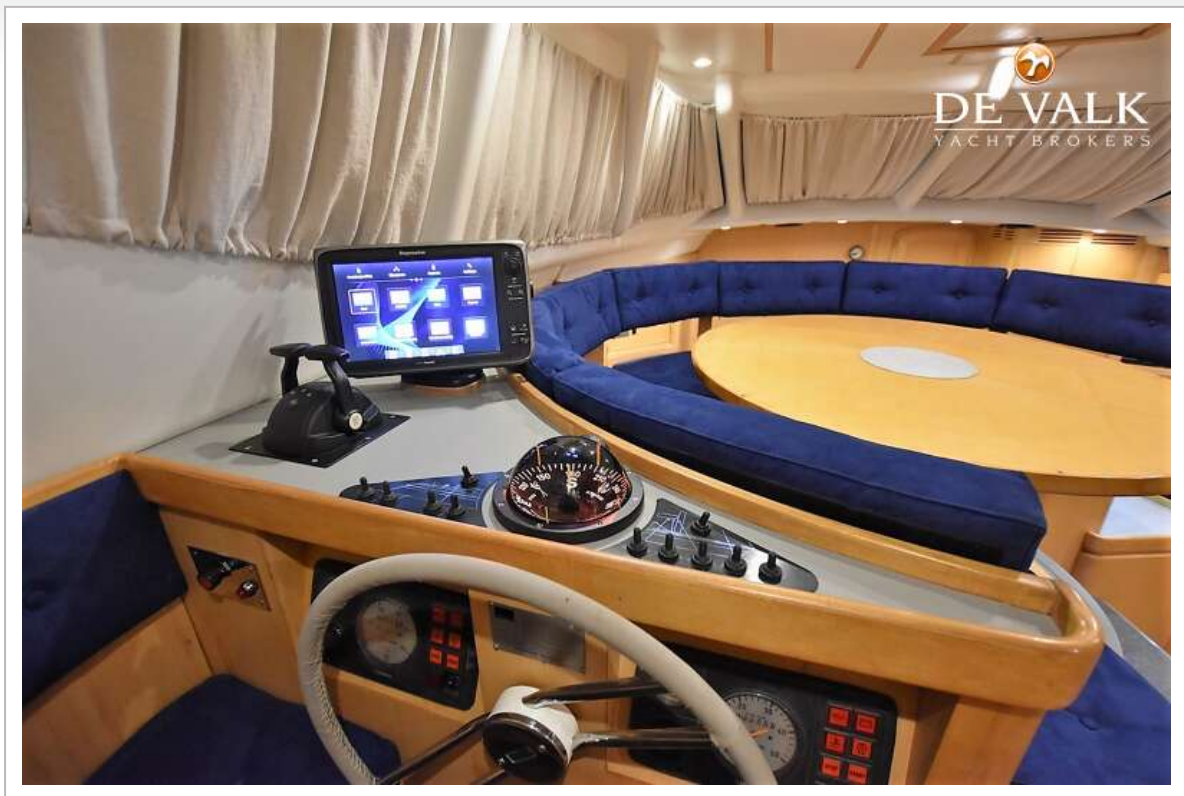
WAUQUIEZ PILOT SALOON 60



WAUQUIEZ PILOT SALOON 60



WAUQUIEZ PILOT SALOON 60



WAUQUIEZ PILOT SALOON 60



WAUQUIEZ PILOT SALOON 60



WAUQUIEZ PILOT SALOON 60



WAUQUIEZ PILOT SALOON 60

