



NAUTICAT 33

NAUTICAT 33

BROKER'S COMMENTS

This well-maintained Nauticat 33 has already been fitted from the yard with a deck extension of the later 331. Furthermore, this vessel is also equipped with double wet cell which is fairly unusual on a vessel of this size. The owner has used the ship as a motorboat in recent years but the complete sailing wardrobe is still present. Now available for viewing at our sales marina in Hindeloopen 7 days a week.

Johan Nooitgedagt

SPECIFICATIONS

Dimensions	10.10 x 3.25 x 1.25 (m)	Builder	Nauticat - Siltala Yachts
Built	1987	Cabins	2
Material	GRP	Berths	8
Engine(s)	1 x Ford Lehman 2725E diesel	Hp/Kw	90 (hp), 66.24 (kw)
Asking price	sold (VAT)	Lying	at sales office

CONTACT

Sales office	De Valk Hindeloopen	Telephone	+31 514 52 40 00
Address	Oosterstrand 1 8713 JS Hindeloopen The Netherlands	E-mail	hindeloopen@devalk.nl

DISCLAIMER

These particulars are given in good faith as supplied but cannot be guaranteed.



GENERAL

Model	NAUTICAT 33
Type	motorsailer
LOA (m)	10,10
LWL (m)	8,60
Beam (m)	3,25
Draft (m)	1,25
Air draft (m)	3,00
Headroom (m)	1,90
Year built	1987
Builder	Nauticat - Siltala Yachts
Country	Finland
Designer	W. Aarnipalo
Displacement (t)	8
Ballast (tonnes)	1,8
Hull material	GRP
Hull colour	white
Hull shape	round-bilged
Keel type	long keel
Superstructure material	GRP
Rubbing strake	yes
Deck material	GRP
Deck finish	teak
Superstructure deck finish	non-skid moulded in
Antifouling (year)	2022
Dorades	2x
Window frame	yes
Window material	tempered glass
Portholes	yes
Fuel tank (litre)	stainless steel 1x 300 ltr. new 2020
Fuel tank 2 (litre)	Not Connected



Level indicator (fuel tank)	yes
Freshwater tank (litre)	polyethylene 200 ltr.
Blackwater tank (litre)	stainless steel
Wheel steering	hydraulic
Inside helm position	yes
Outside helm position	hydraulic
Emergency tiller	yes

ACCOMMODATION

Cabins	2
Berths	8
Interior	teak
Floor	teak
Pilot house/deck saloon	yes
Headroom saloon (m)	1.85
Sliding roof	Manual
Heating	diesel ducted hot air New 2023
Chart table	yes
Dinette to convert into berth	yes
Sliding door to cockpit	yes
Galley	yes
Countertop	corian
Sink	stainless steel 2x
Cooker	calor gas 3 burner
Oven	yes
Fridge	yes
Freezer	Freeze compartment in fridge
Hot water system	220V + engine
Water pressure system	electrical
Kettle	yes
Owners cabin	v-bed



Bed length (m)	1.95
Wardrobe	hanging and shelves
Bathroom	shared
Toilet	shared Front
Toilet system	vacuum Lavac
Wash basin	at the toilet
Shower	yes
Guest cabin 1	double bed
Bed length (m)	1.85
Wardrobe	hanging and shelves
Bathroom	en suite
Toilet	en suite Rear
Toilet system	vacuum Lavac
Wash basin	at the toilet
Toilet	yes
Toilet system	yes

MACHINERY

No of engines	1
Make	Ford Lehman
Type	2725E
HP	90
kW	66.24
Fuel	diesel
Maximum speed (kn)	8
Cruising speed (kn)	7
Consumption (l/hr)	3
Range (nm)	800
Engine hours	1570
Engine cooling system	freshwater heat exchanger
Drive	shaft



Shaft seal	yes
Engine controls	bowden cable
Gearbox	mechanical
Engine controls	bowden cable
Exhaust	watercooled
Propeller type	fixed
Propeller blades	3
Propeller shaft material	stainless steel
Shaft lubrication	water
Manual bilge pump	yes
Electric bilge pump	yes
Electrical installation	12 / 220V
Batteries	yes
Start battery	1x 165 Ah
Service battery	2x 200 Ah
Battery charger	2020
Inverter	yes
Solar panel	yes
Shorepower	with cable
Extra info	Motor is encapsulated for extra noise reduction

NAVIGATION

Compass	yes
Depth sounder	yes
Depth sounder/log	yes
Log	yes
VHF	yes
Autopilot	Raymarine 7000
Plotter/GPS	Garmin plotter GPS map 5008
Personal computer	Toshiba Laptop
Electronic chart(s)	yes



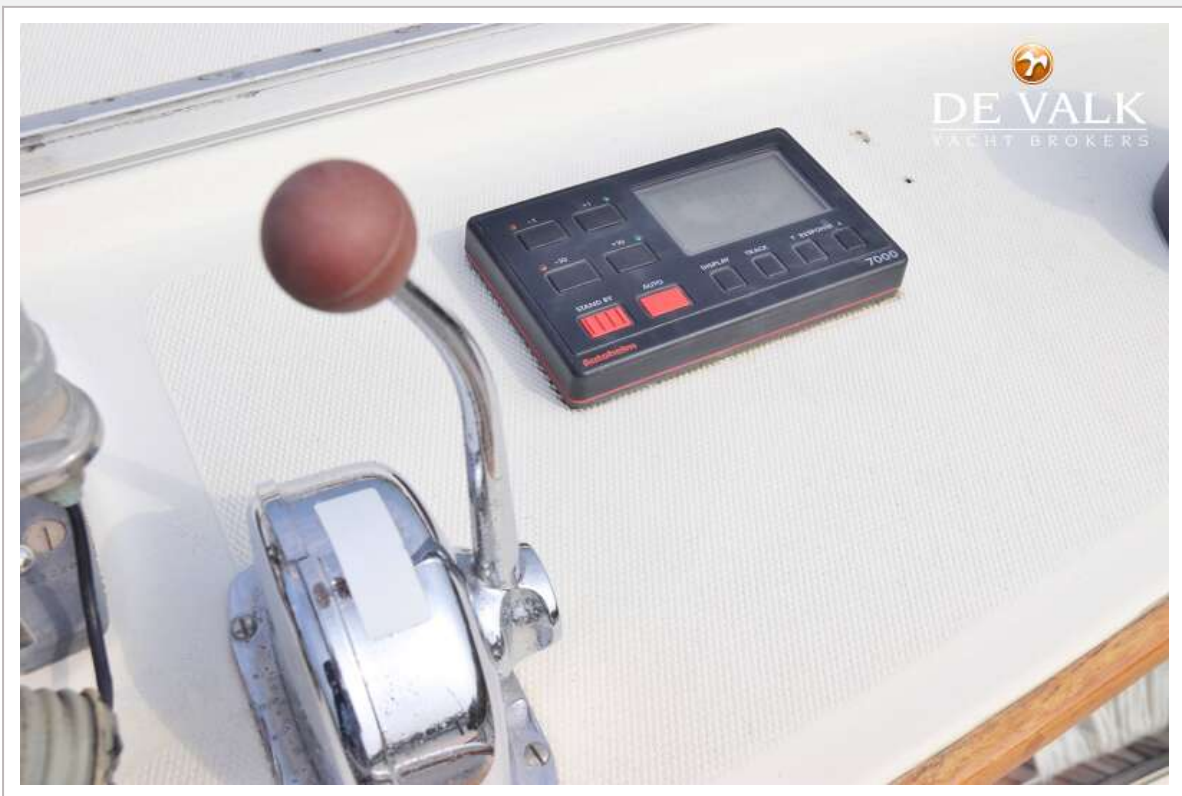
EQUIPMENT

Fixed windscreen	yes
Cockpit table	yes
Bathing platform	yes
Gangway	Stainless steel
Anchor	yes
Anchor chain	yes
Anchor 2	Rear
Windlass	electrical Lofrans
Sea railing	stainless steel
Railing side opening gates	yes
Pushpit	yes
Pulpit	yes
Fenders	yes
Mooring lines	yes
Radio-cd player	yes
Clock - barometer	yes
Fire extinguisher	yes











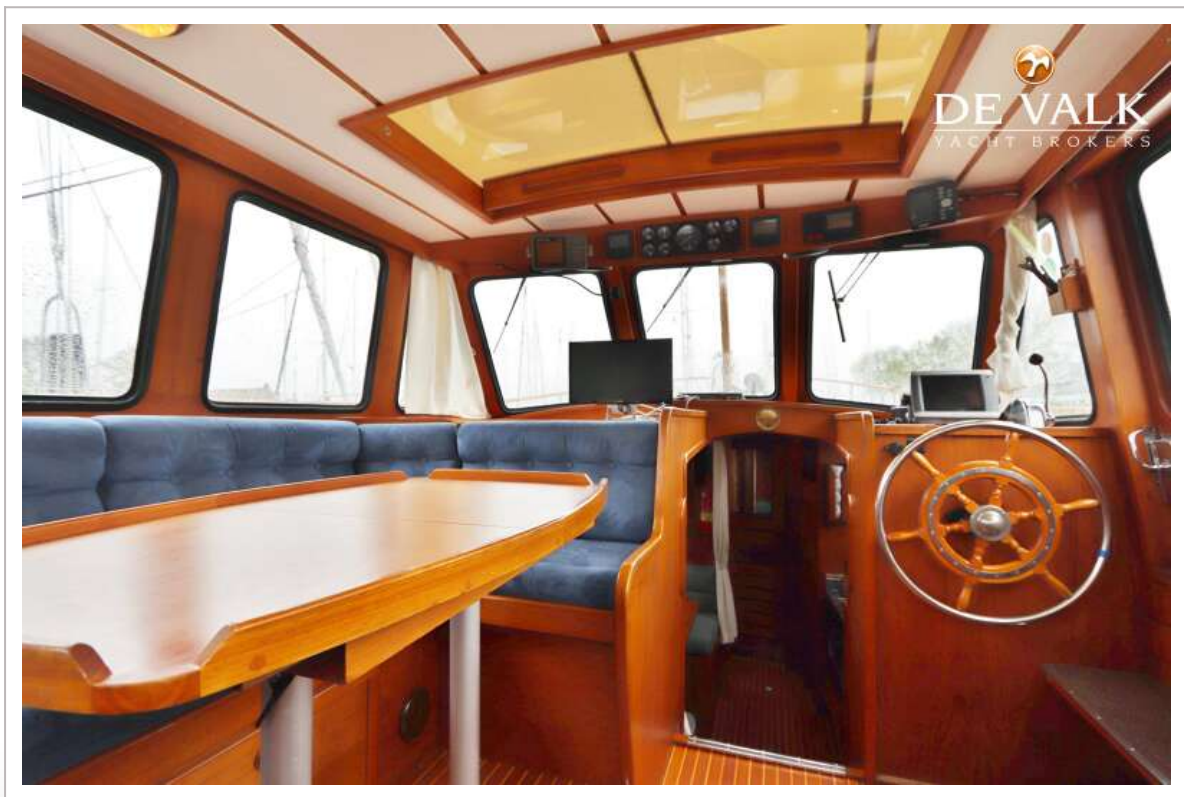


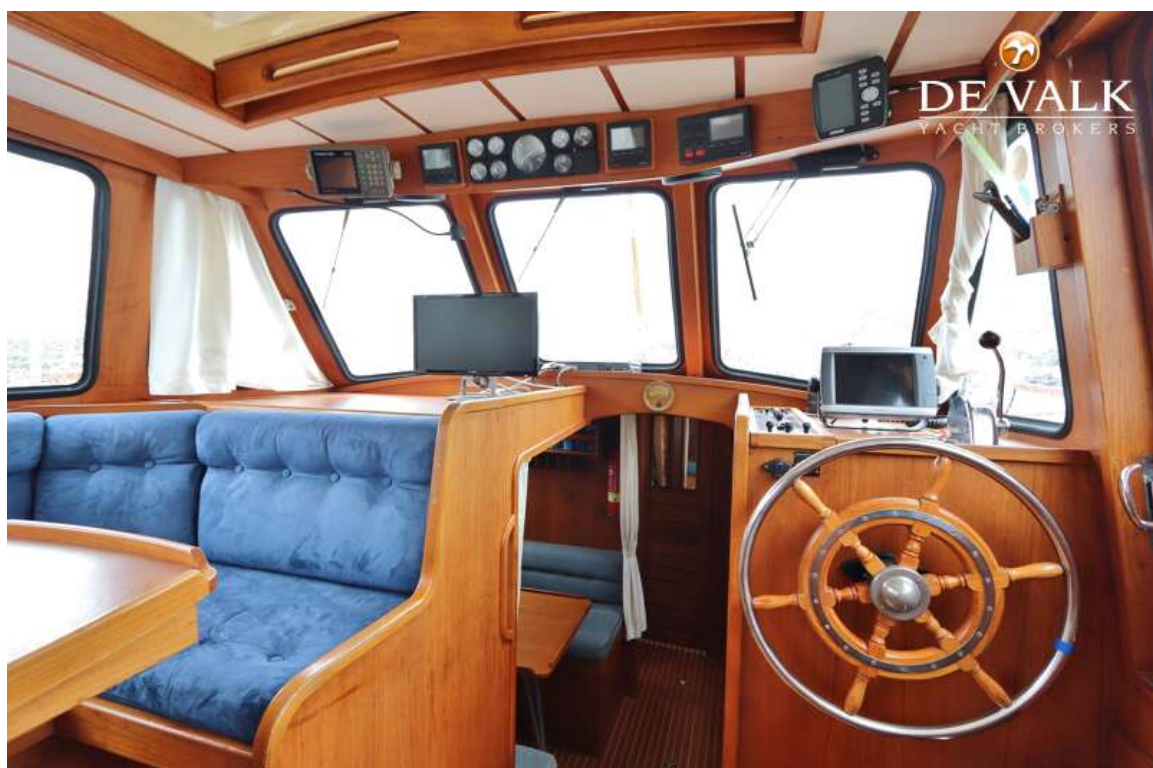






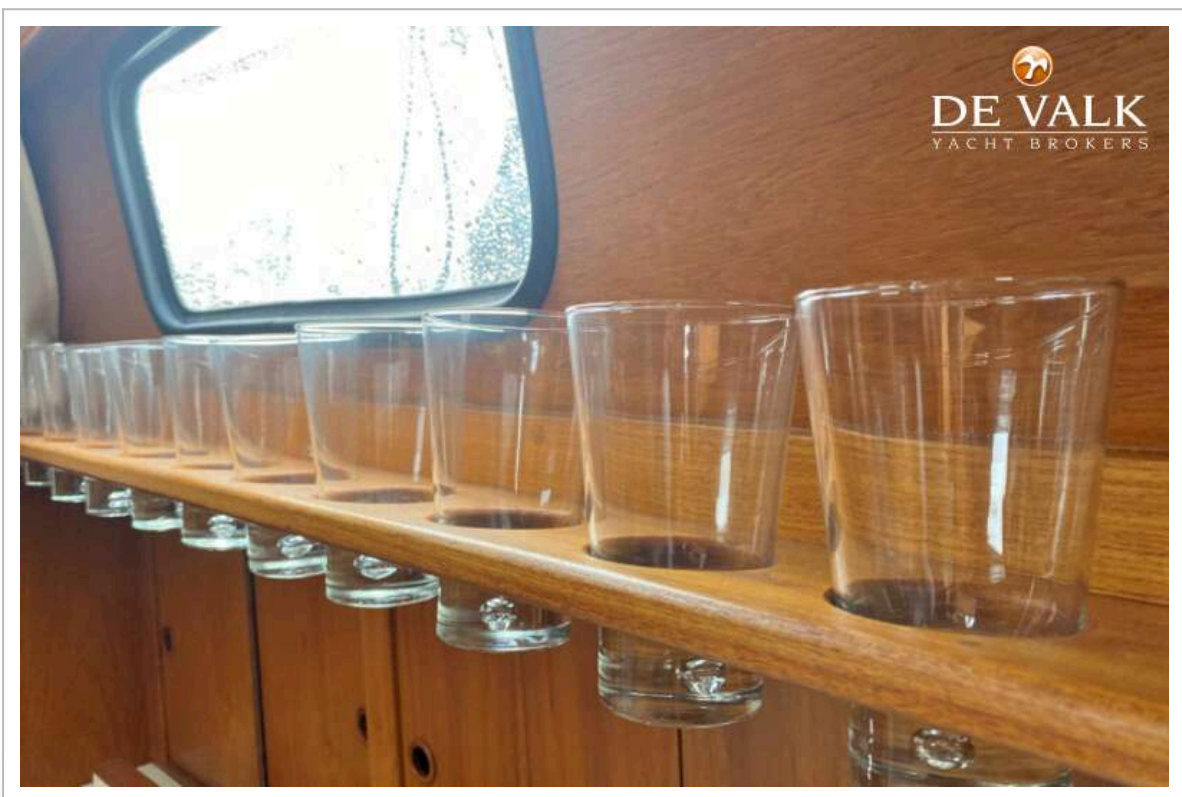


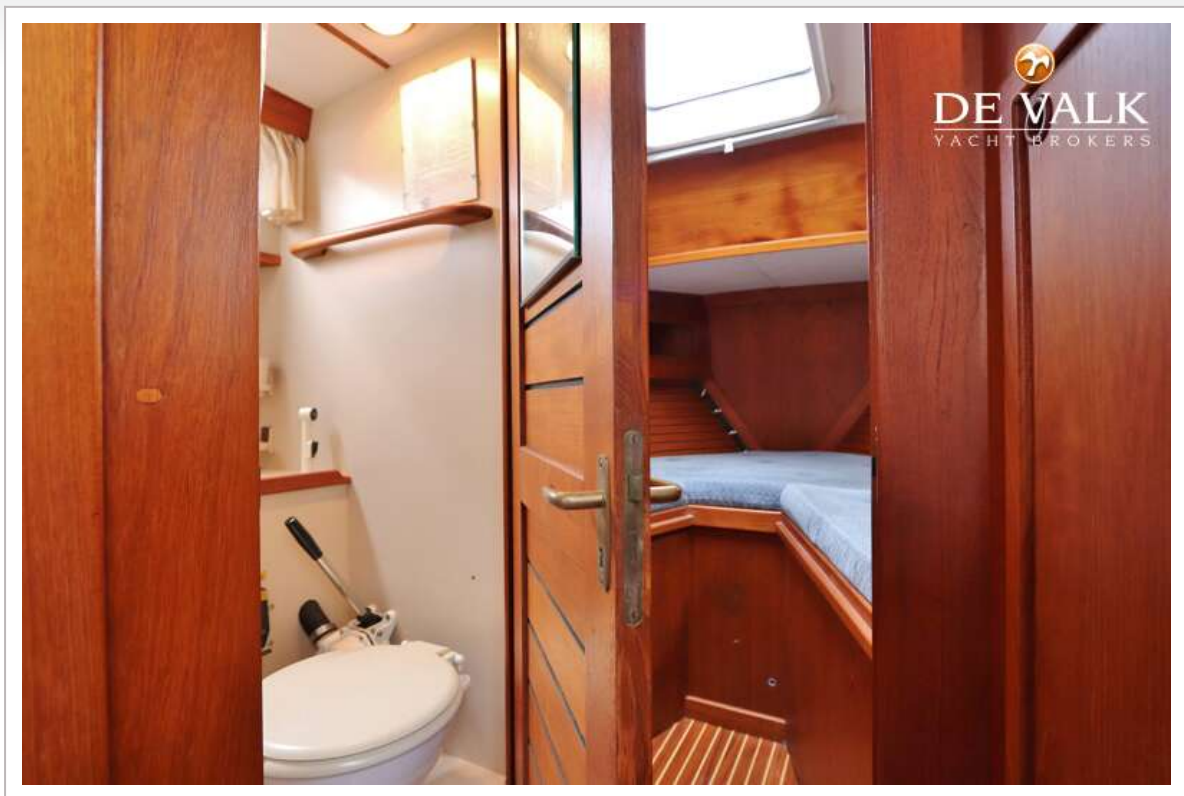




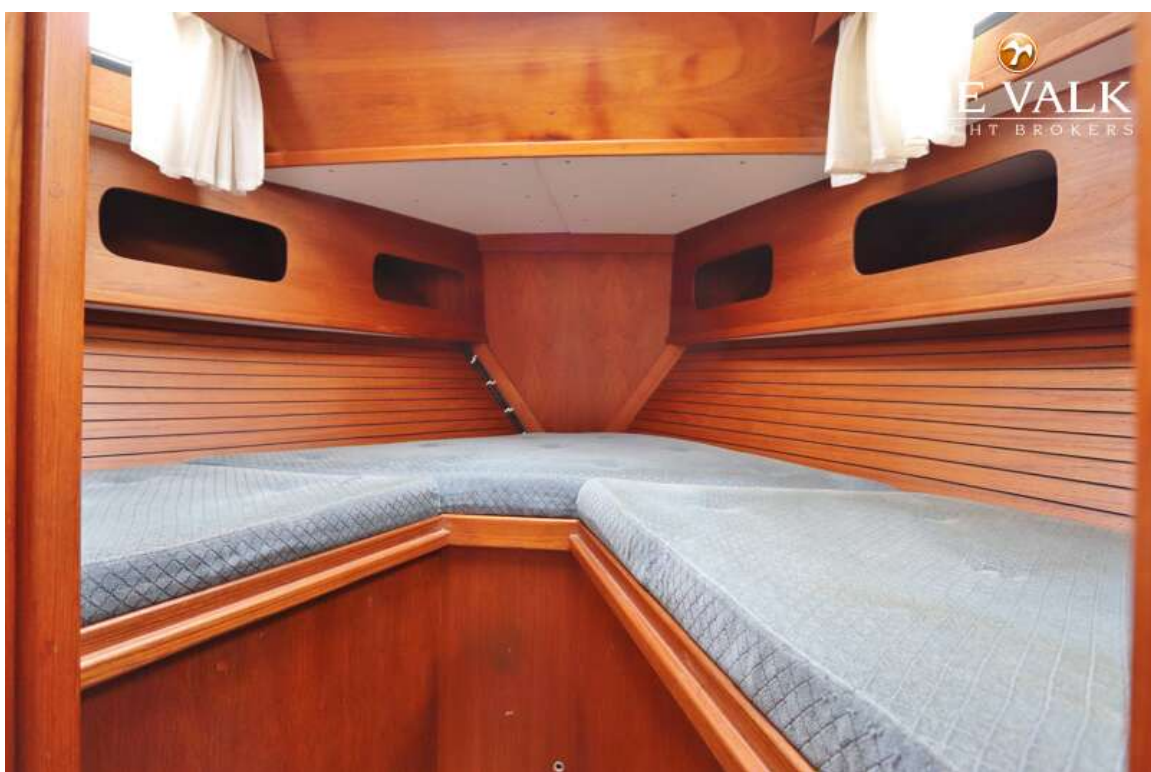
NAUTICAT 33







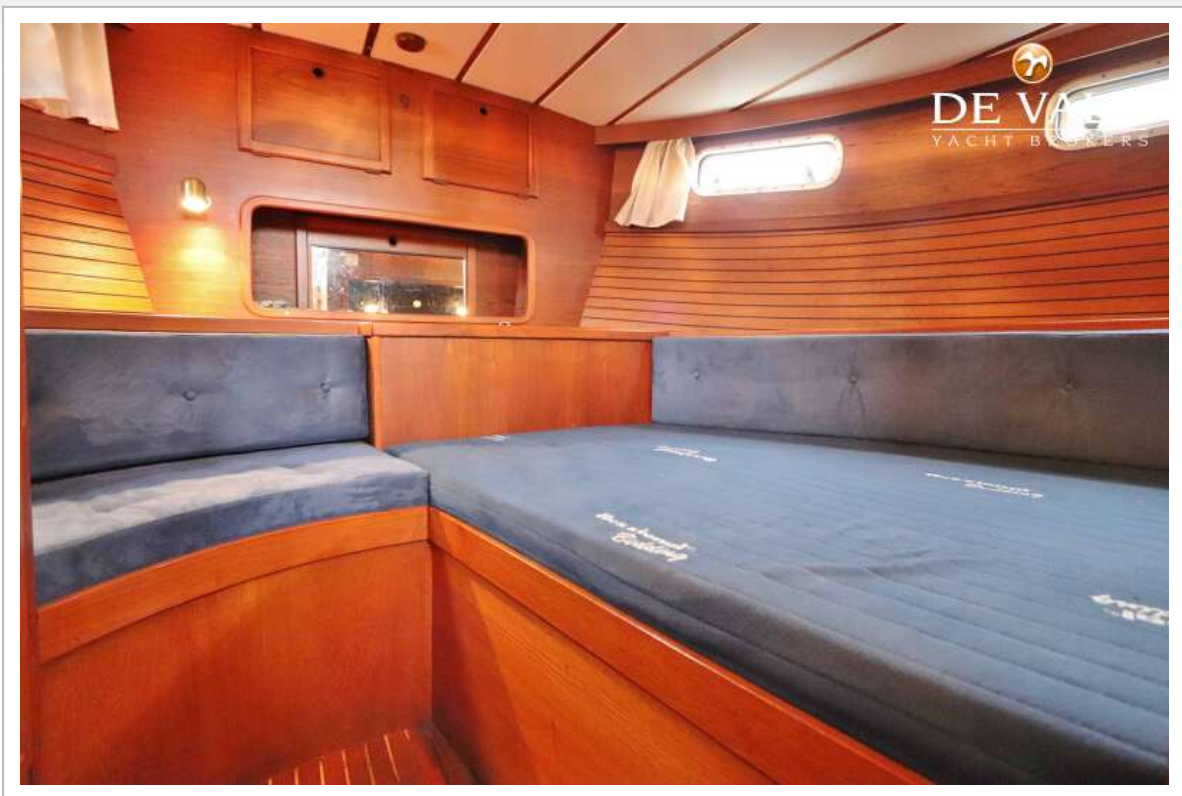
NAUTICAT 33



NAUTICAT 33



NAUTICAT 33





NAUTICAT 33

