



LUXE MOTOR 18.30



DE VALK  
YACHT BROKERS

# LUXE MOTOR 18.30

## BROKER'S COMMENTS

Luxe motor 18.30 "Sa Marsj", start casco build in 2001, first owners finished the interior in the period 2006-2016, the current owners brought the ship to Altena in 2016 for a complete refit for live onboard and long time cruising in the inland waterways.

*Ron Neij*

## SPECIFICATIONS

<b>Dimensions</b>	18.30 x 4.80 x 1.10 (m)	<b>Builder</b>	Rybinsk Shipyard
<b>Built</b>	2001	<b>Cabins</b>	2
<b>Material</b>	Steel	<b>Berths</b>	4
<b>Engine(s)</b>	1 x DAF 615 diesel	<b>Hp/Kw</b>	118.00 (hp), 86.85 (kw)
<b>Asking price</b>	€ 335.000 (VAT Paid)	<b>Lying</b>	elsewhere / Not at sales office

## CONTACT

<b>Sales office</b>	De Valk Monnickendam	<b>Telephone</b>	+31 299 65 63 50
<b>Address</b>	Hoogedijk 6 1145 PM Katwoude The Netherlands	<b>E-mail</b>	monnickendam@devalk.nl

## DISCLAIMER

These particulars are given in good faith as supplied but cannot be guaranteed.



## GENERAL

Model	LUXE MOTOR 18.30
Type	motor yacht
LOA (m)	18,30
LWL (m)	17,30
Beam (m)	4,80
Draft (m)	1,10
Air draft min (m)	3,00
Year built	2001
Launched	2006 - 2016
Builder	Rybinsk Shipyard
Country	Russia
Designer	K & S Maritiem Technisch Bureau
Displacement (t)	50
Ballast (tonnes)	concrete
CE norm	D
Hull material	steel
Hull colour	black
Hull thickness (mm)	6mm
Hull shape	round-bilged
Superstructure material	steel
Superstructure (mm)	6mm
Deck plate thickness (mm)	6mm
Rubbing strake	steel
Deck material	steel
Deck finish	synthetic teak Flexiteek
Superstructure deck finish	paint
Cockpit deck finish	synthetic teak
Window frame	aluminium
Window material	double glazing Mostly double glazed windows
Deckhatch	yes



# LUXE MOTOR 18.30

Insulation	rockwool
Mast can be lowered	yes
Fuel tank (litre)	Approx. 1200 litres white diesel for the main engine
Fuel tank 2 (litre)	Approx. 1200 litres red diesel for the Generator and heating
Level indicator (fuel tank)	yes
Freshwater tank (litre)	Approx. 7000 litres (2 x 3500L)
Level indicator (freshwater)	yes
Blackwater tank (litre)	stainless steel 120 litre
Wheel steering	Hydraulic and electric
Inside helm position	yes
Extra info	The contemporary comfort on board is the same as you are a shore. The living-space under, is 68 m <sup>2</sup> and above around 46m <sup>2</sup> . You will have an amazing view of 360 degr. from the aft-deck. You can boat on most of the european waterways, the small canals, big rivers, lakes and also the most french canals, for example Canal du Midi until Beziers. The ship is self-supporting due to the solarpanels, generator 11 KVA 220 V, generator 24 V 120 ah on the main engine, the battery pack of 840 ah and 7000 lit of drinking water. 2 x spudpole for anchoring till max approx. 5m.
Extra info	Easy anchoring due to her two spudpoles. She is ready to go! 2x digital screen to operate the spudpoles.

## ACCOMMODATION

Cabins	2
Berths	4
Floor	teak
Open cockpit	yes
Saloon	yes
Heating	central heating Kabola KB45 Ecoline, Blue flame
Air-conditioning	In the ownerscabin (reversible)
Dining room	yes
Opening door to cockpit	yes
Galley	yes



# LUXE MOTOR 18.30

Countertop	Rezin
Sink	stainless steel
Cooker	induction Siemens
Extractor	Siemens
Fridge	2 x Bosch and 1x Iventum
Freezer	Liebherr
Hot water system	on central heating
Water pressure system	electrical
Dishwasher	Siemens IQ500
Owners cabin	double bed Bed 1.60 x 2.00 m.
Wardrobe	hanging and drawers
Bathroom	separate
Toilet	separate
Toilet system	Electric, grinding.
Wash basin	in the bathroom
Shower	yes
Guest cabin 1	Currently in use as storage room, easy to convert.
Washing machine	Miele W1 Classic
Dryer	Beko
Extra info	Storage room easy to convert into a Guest cabin with double bed
Extra info	And separate storage room

## MACHINERY

No of engines	1
Make	DAF
Type	615
HP	118
kW	86.85
Fuel	diesel
Year installed	2004
Year of overhaul	Main engine in 2004 overhauled by Drinkwaard - NL



# LUXE MOTOR 18.30

Engine hours	907
Engine cooling system	closed keelcooling River Chest-box cooler
Drive	shaft
Engine controls	bowden cable
Gearbox	hydraulic ZF Hurth type ZF45-1
Bowthruster	electric Approx 20HP electric bowthruster
Exhaust	dry
Thrust bearing	Phyton drive
Propeller type	fixed
Propeller blades	4 bladed
Propeller shaft material	stainless steel
Shaft lubrication	grease
Electric bilge pump	2x
Electrical installation	yes
Generator	Lister Petter 11 KVA- 8kw/50Hz at 1500rpm
Running hours generator	282 hrs (04-2024)
Batteries	4 x 200 ah for the spudpoles and bowthruster
Start battery	2 x 200 ah
Service battery	12 x 2V70 ah batteries. A total of 840amp
Generator battery	1x 120 ah
Battery monitor	Victron digital screen
Battery charger/inverter	Victron Quattro 24/120/5000
Solar panel	8 solar panels with Victron Smart solar controller
Shorepower	With approx. 150m. cable.
Insulation transformer	Victron Isolator traformer 7000
Extra info	Mastervolt Alpha pro II 24/100 ah dynamo on the main engine
Extra info	Engine hours 907 (04-2024)
Extra info	Generator cooling system: closed keelcooling River Chest-box

## NAVIGATION

Compass	yes
---------	-----



Depth sounder	Navman 3100
Log	Via laptop
VHF	2 x: Sailor RT2048BV and Sailor SP3510. 1x handheld
Rudder angle indicator	Via Laptop
GPS	Via laptop
Plotter	Via Laptop, PC-Navigo
Weather receiver	Via laptop
Personal computer	yes
PC connection	yes
AIS receiver	Via laptop
Camera	3 x
Navigation lights	yes
Searchlight	yes
Loudhailer	Intern and extern
Extra info	Internet receiver

## EQUIPMENT

Cockpit cover	Red cockpit cover with wooden roof, stainless steel frame
Cockpit cushions	yes
Boarding ladder	stainless steel
Gangway	Stainless steel gangway, with railing, extendable 5m.
Anchor	yes
Anchor chain	Approx. 25 m chain
Windlass	manual
Deck wash	220v Storck pump and approx. 130m. hose.
Dinghy	Wood/GRP
Davits	stainless steel
Davits controls	manual
Deck crane	2 x approx 200kg lifting capacity, stainless steel.
Sea railing	stainless steel
Wiper	3 wipers, adaptable.



# LUXE MOTOR 18.30

Horn	air pressure
Fenders	yes
Mooring lines	yes
Spare parts	Some spare engine parts and tools
Alarm system	yes
TV	yes
TV receiver	Crystop
Clock - barometer	Schatz Clock and barometer
Fire extinguisher	yes
Extra info	Air compressor
Extra info	Led lighting throughout
Extra info	Leather helmsman seat



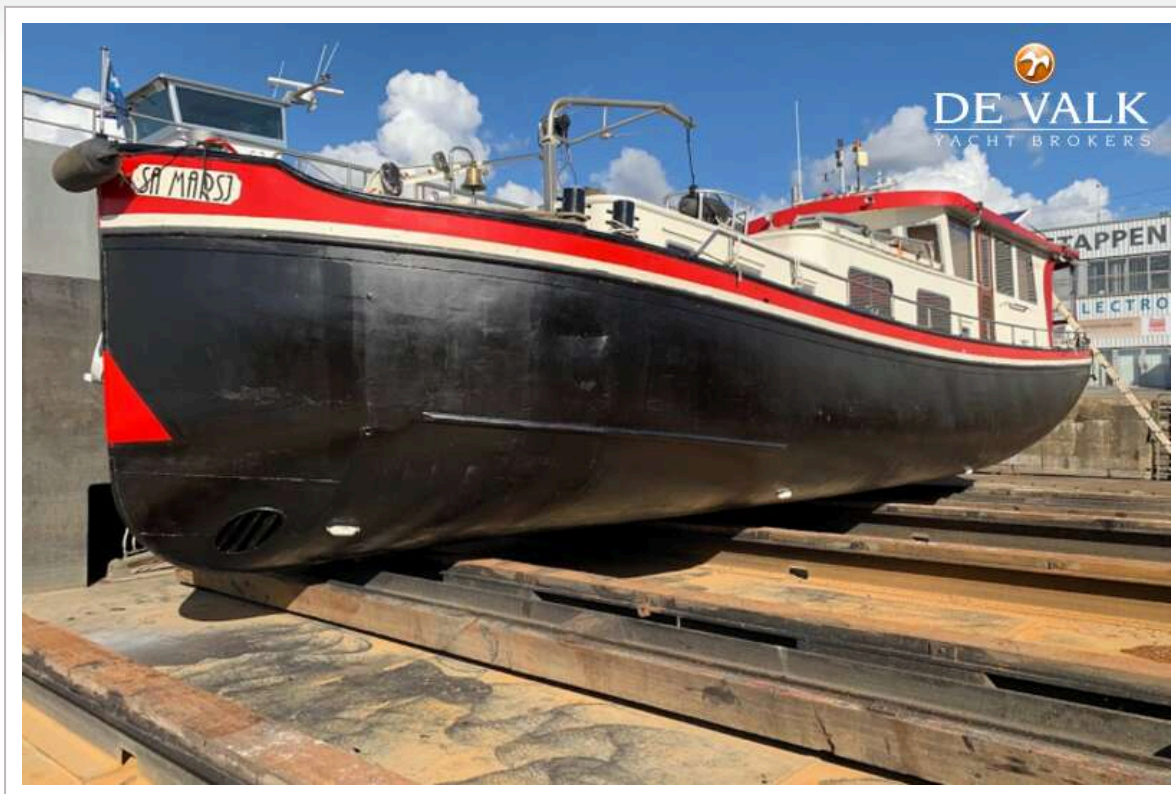


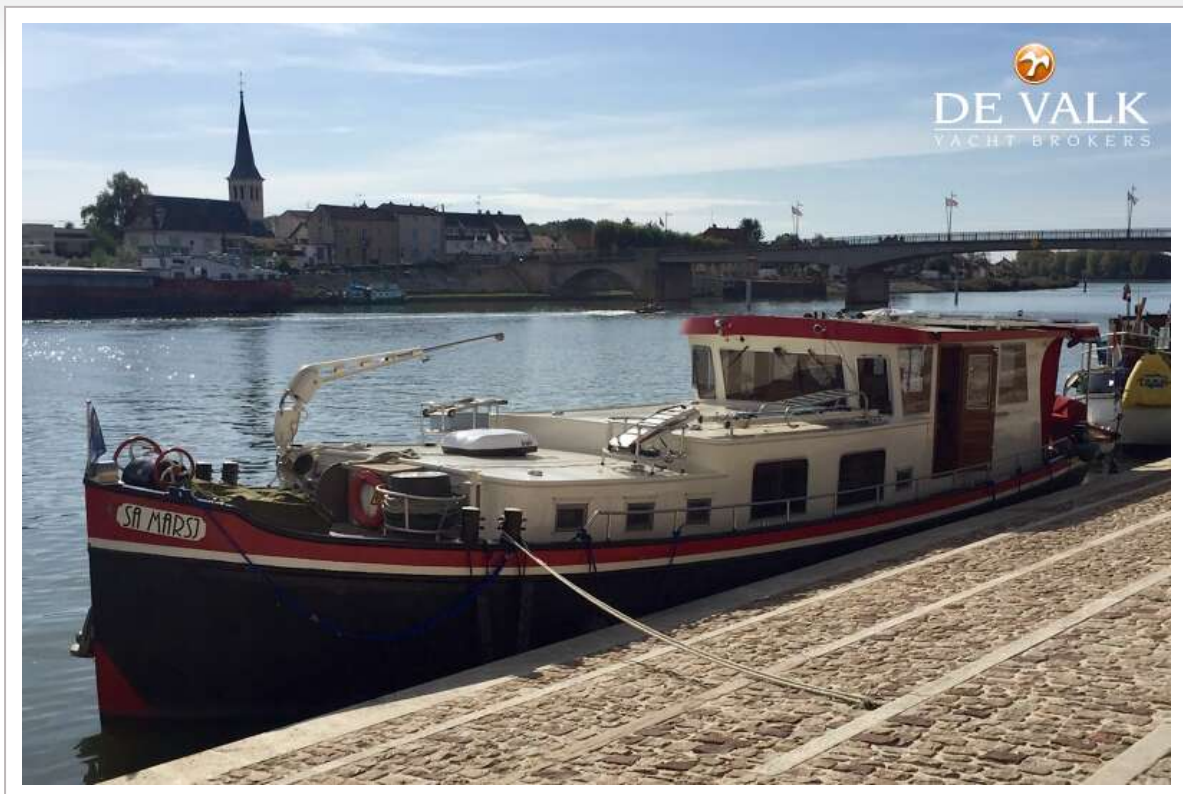






## LUXE MOTOR 18.30







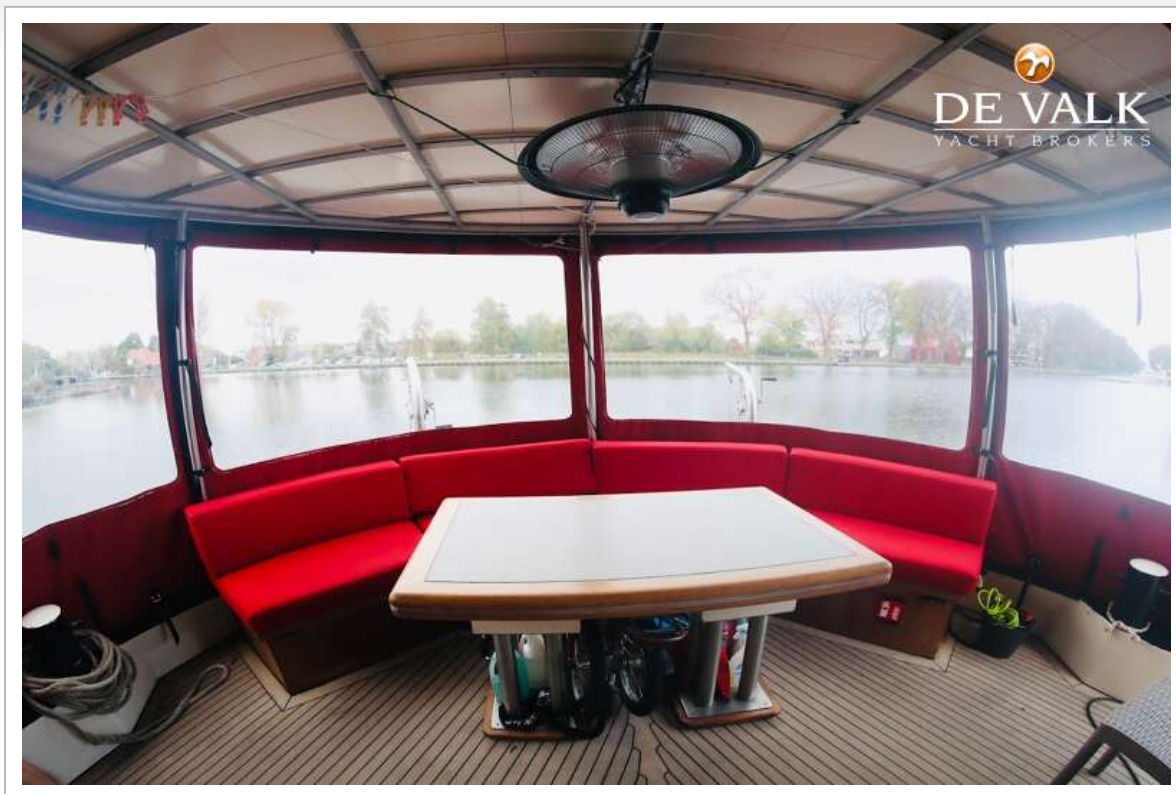
## LUXE MOTOR 18.30





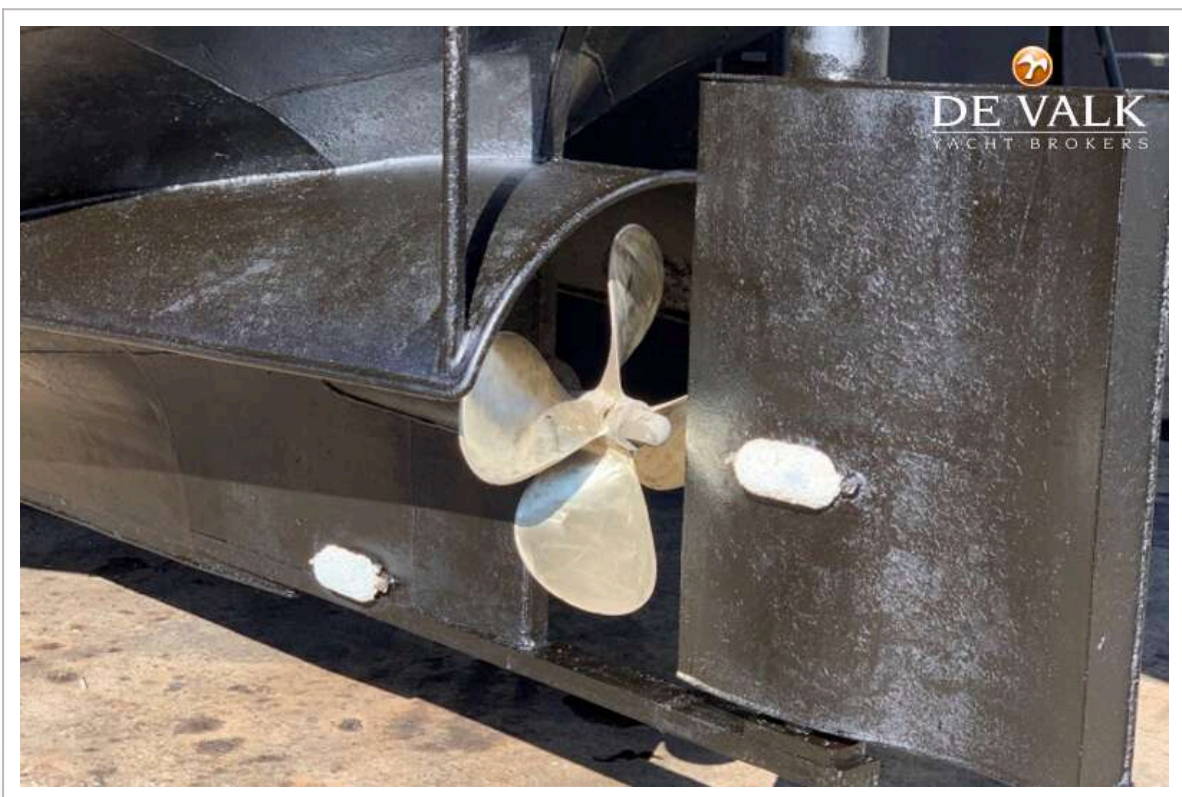
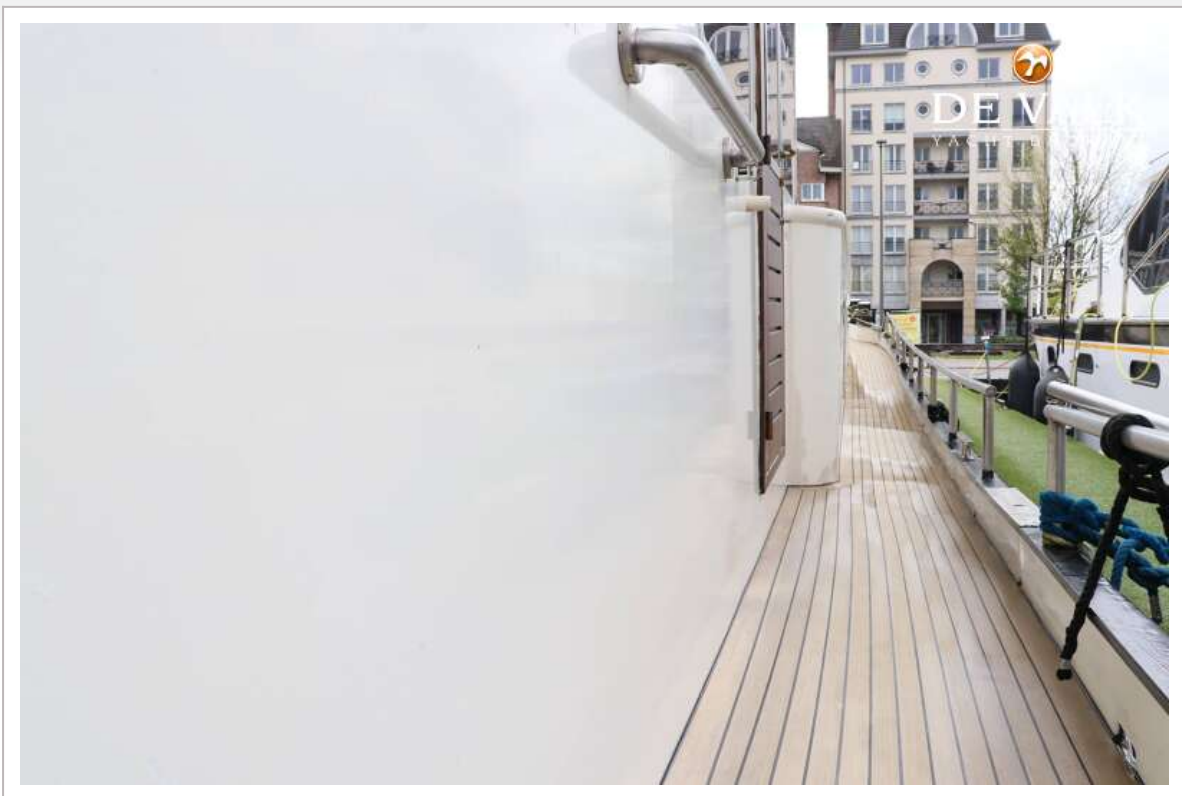


## LUXE MOTOR 18.30

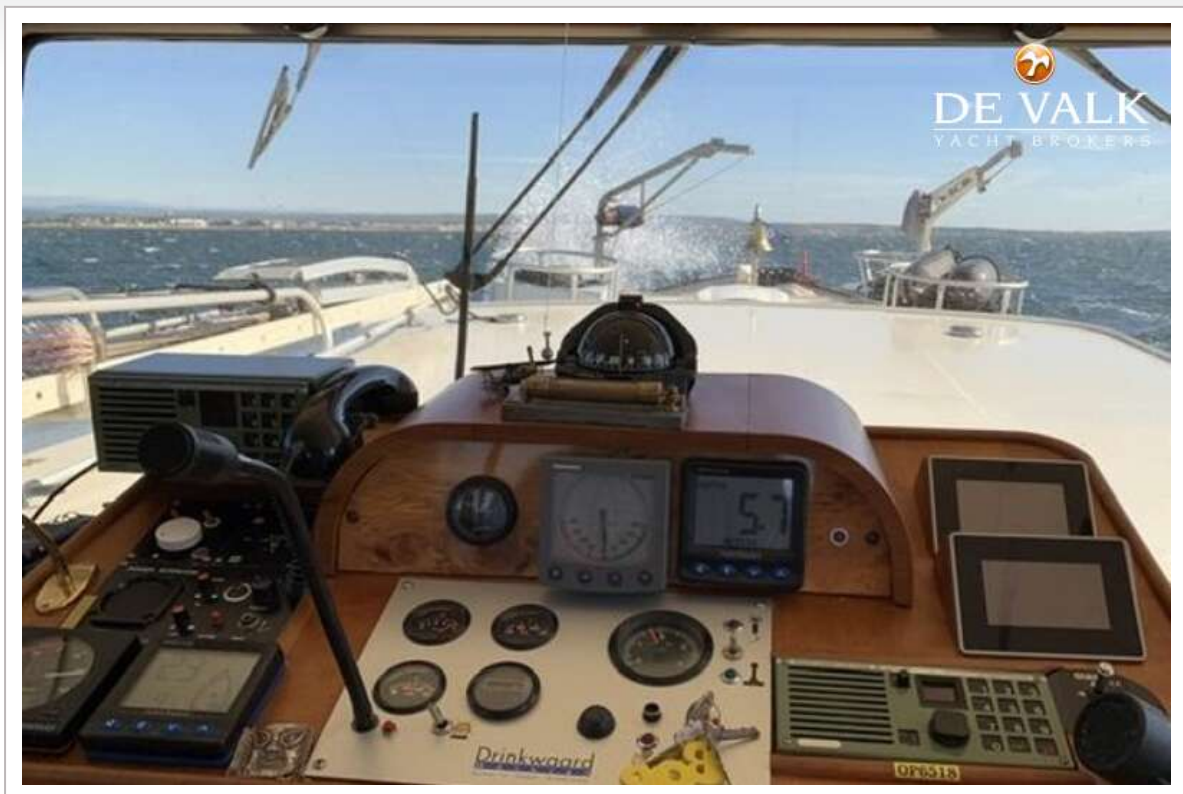








## LUXE MOTOR 18.30





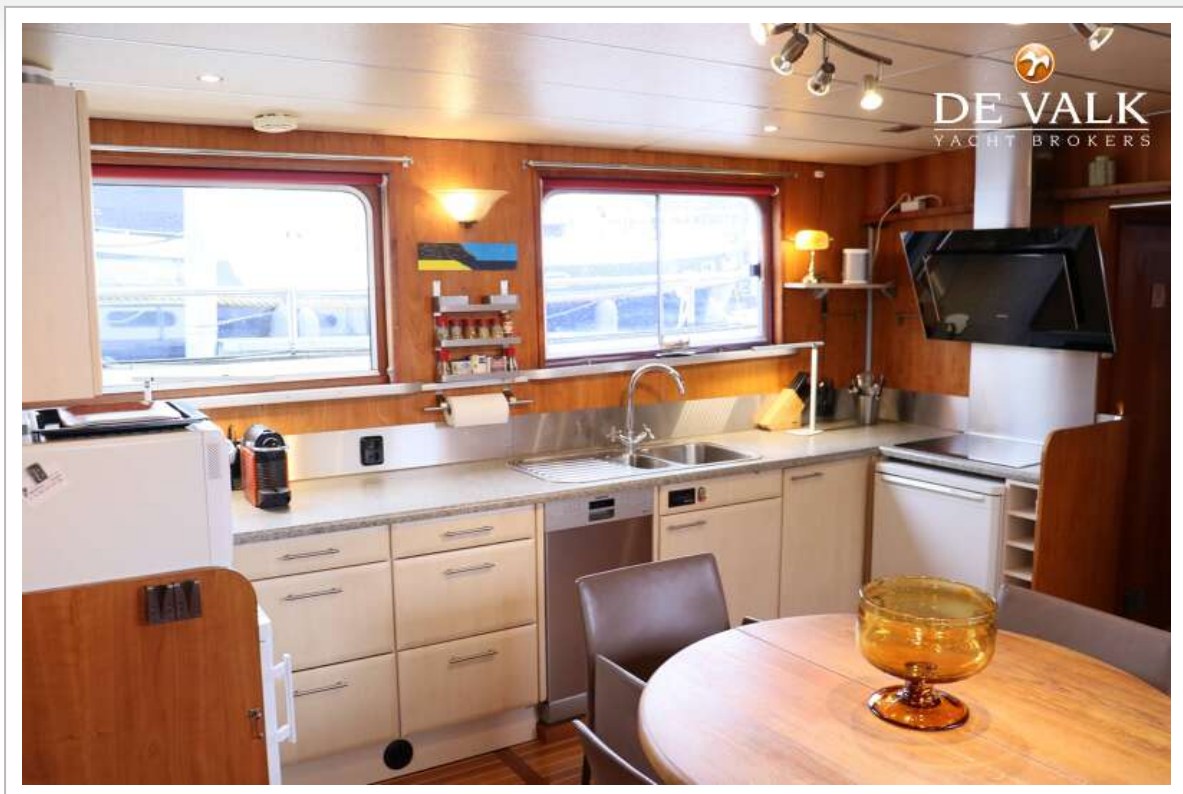
## LUXE MOTOR 18.30





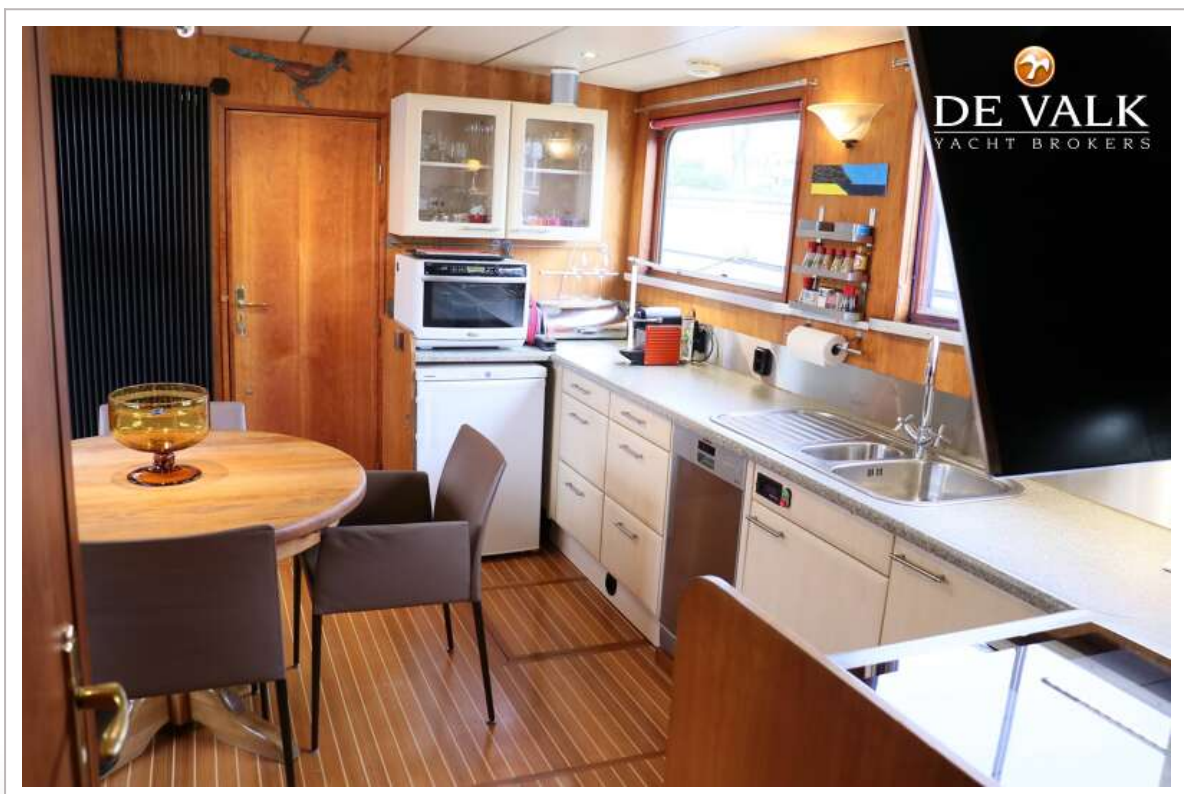


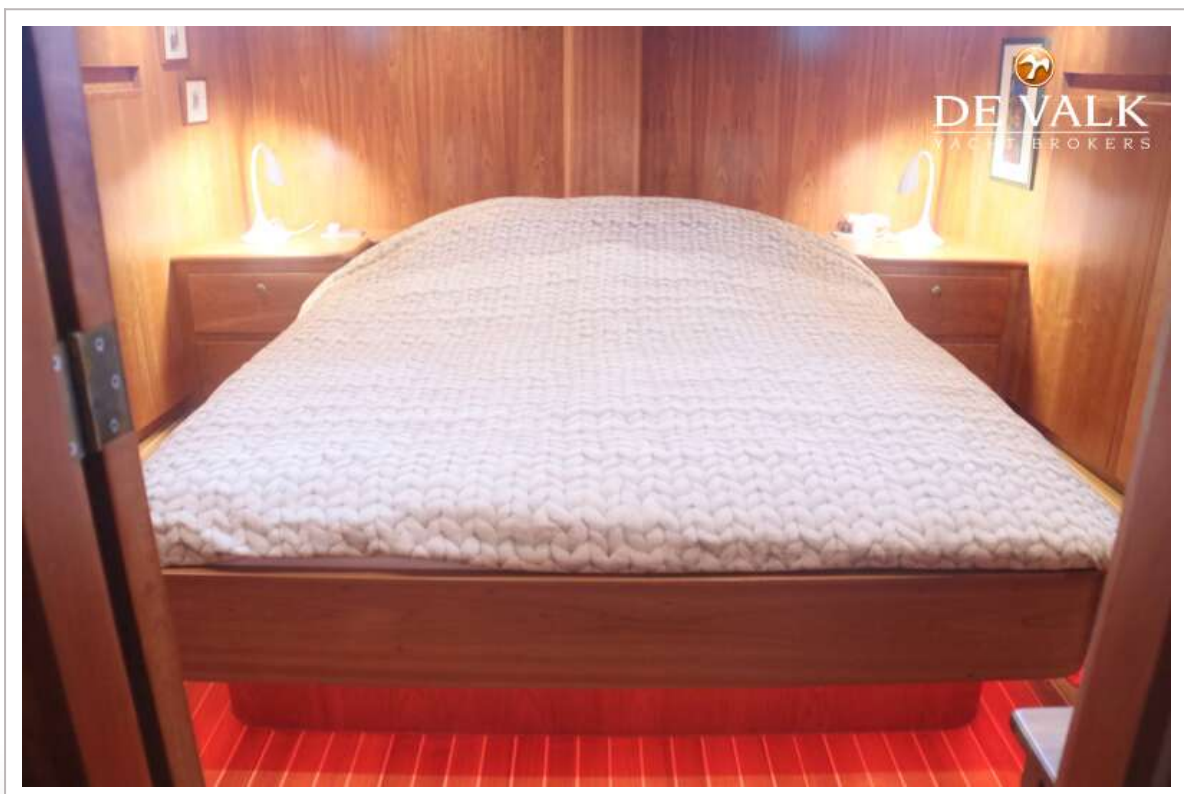
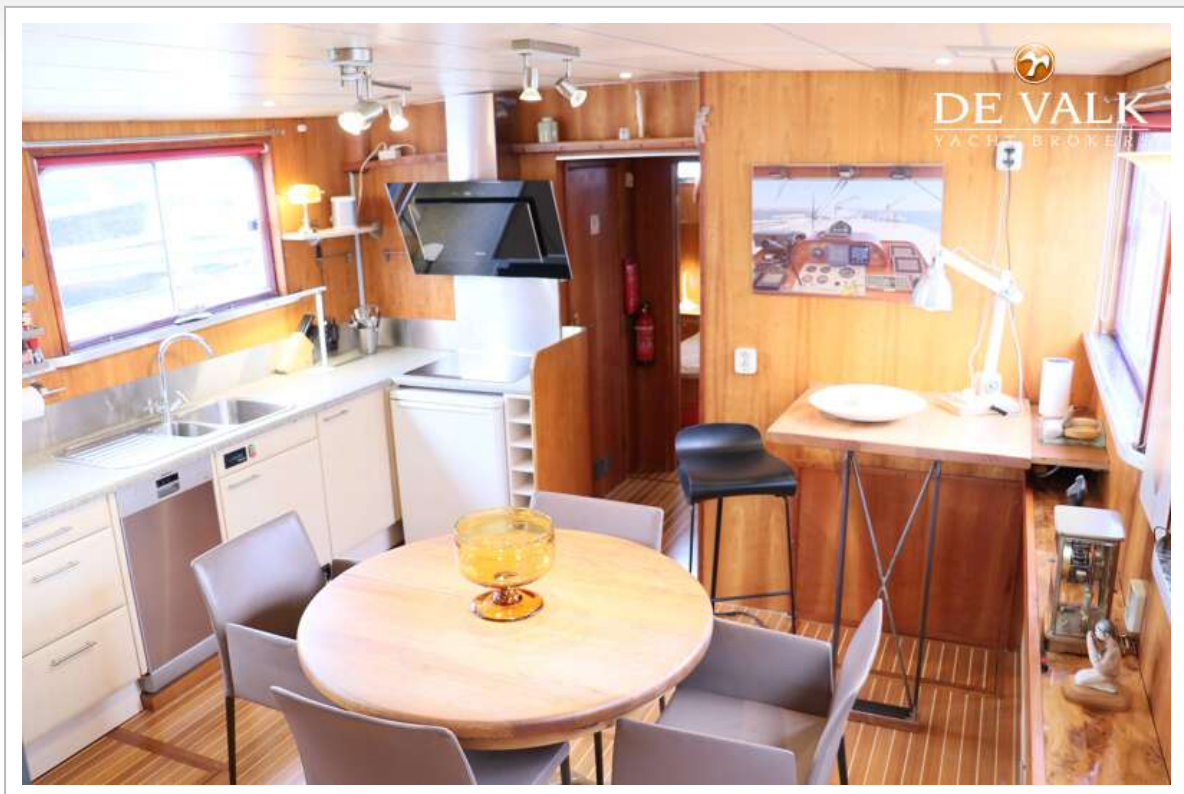






## LUXE MOTOR 18.30





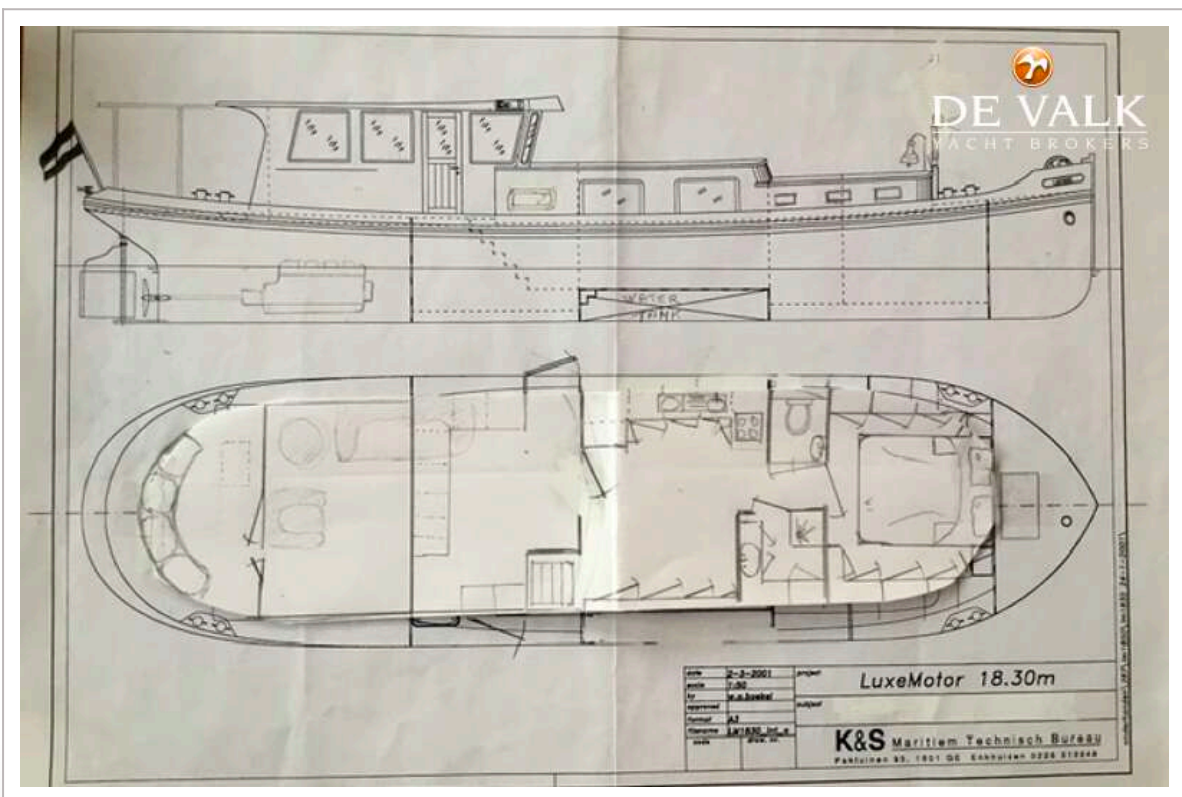




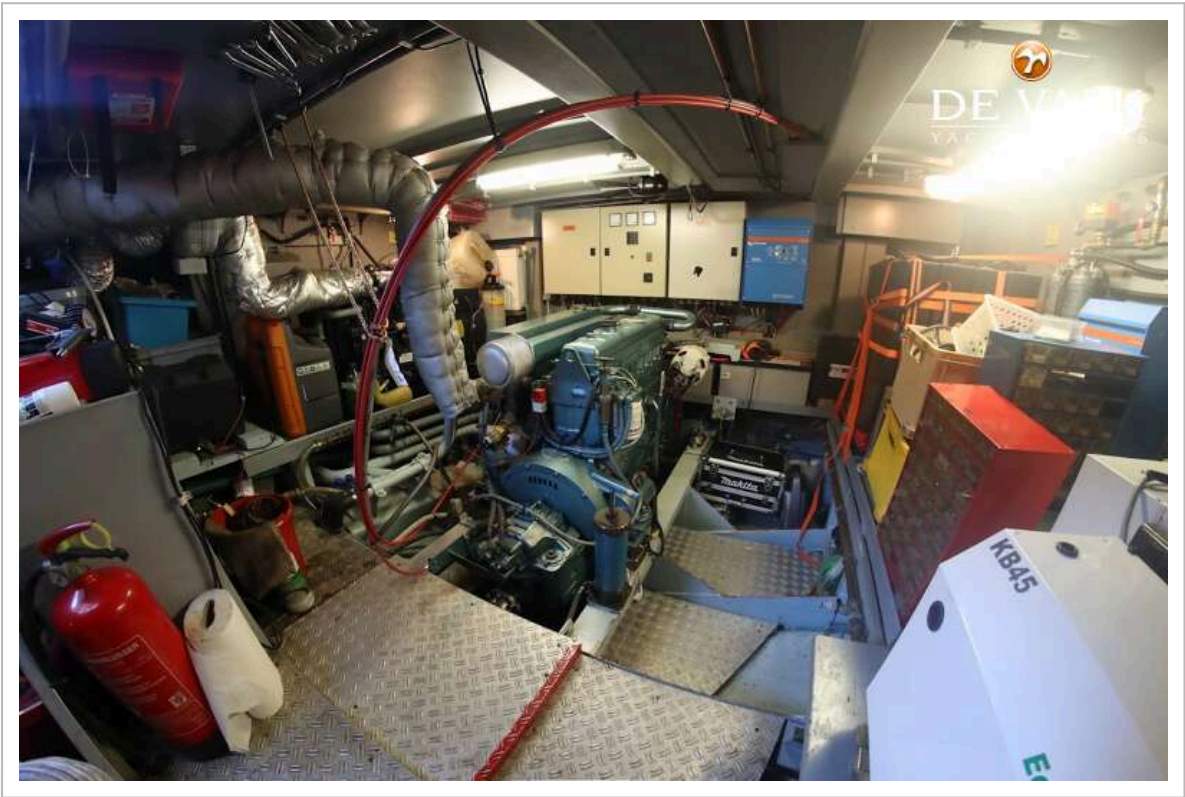
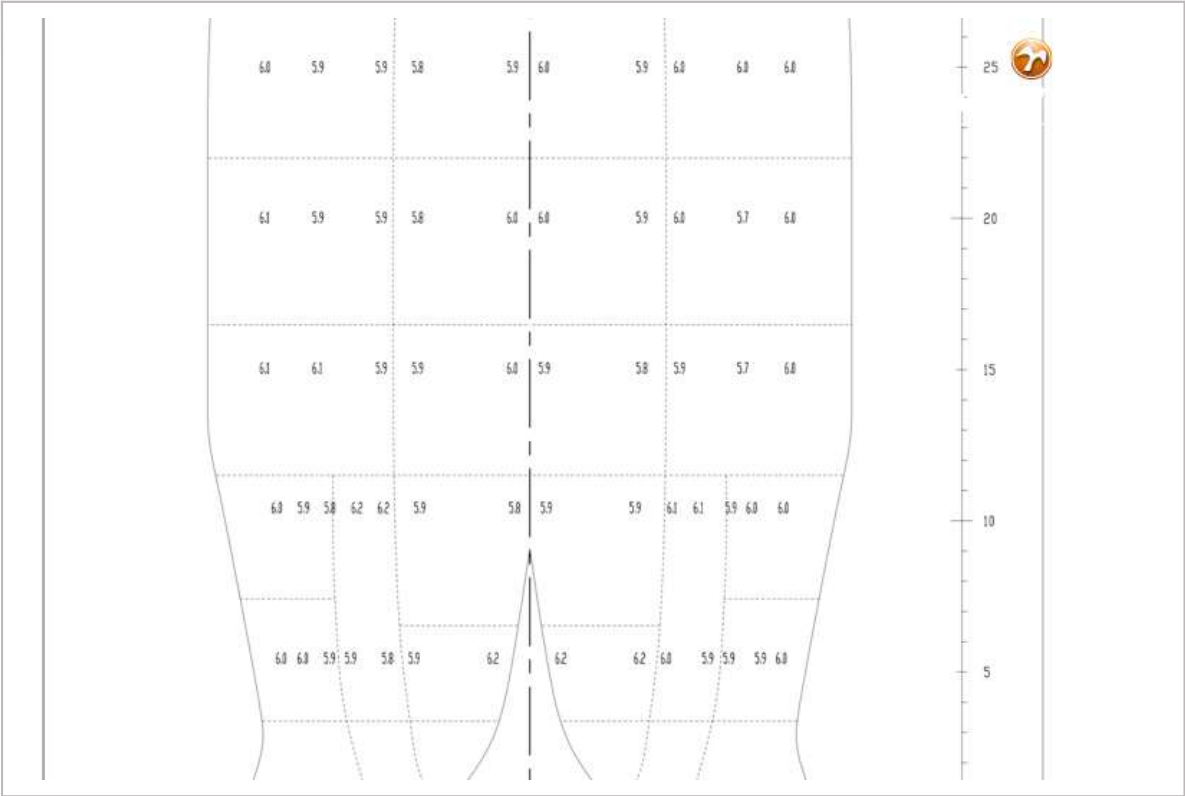




# LUXE MOTOR 18.30



LUXE MOTOR 18.30





## LUXE MOTOR 18.30



## LUXE MOTOR 18.30

