



## TRINTELLA 44



**DE VALK**  
YACHT BROKERS

# TRINTELLA 44

## BROKER'S COMMENTS

This Trintella 44 was the proud flagship of Anne Wever Shipyard's famous Trintella series and owned by himself in the past. An excellent yacht built for optimal living and sailing comfort even during the longest sea voyage. Designed by Van de Stadt and built using only high-quality materials, this is a yacht that will last a long time and offers many years of enjoyable cruising. Are you looking for a long range cruiser or a spacious liveaboard, 'Paradise Bird' will impress! She can be viewed on Lefkas, Greece.

*Ron Neij*

## SPECIFICATIONS

<b>Dimensions</b>	13.40 x 4.10 x 2.20 (m)	<b>Builder</b>	Anne Wever, Trintella Yachts
<b>Built</b>	1978	<b>Cabins</b>	3
<b>Material</b>	GRP	<b>Berths</b>	6
<b>Engine(s)</b>	1 x Perkins sabre M135 diesel	<b>Hp/Kw</b>	125 (hp), 92 (kw)
<b>Asking price</b>	€ 69.000 (VAT Exempt)	<b>Lying</b>	elsewhere / not at sales office

## CONTACT

<b>Sales office</b>	De Valk Monnickendam	<b>Telephone</b>	+31 299 65 63 50
<b>Address</b>	Hoogedijk 6 1145 PM Katwoude The Netherlands	<b>E-mail</b>	monnickendam@devalk.nl

## DISCLAIMER

These particulars are given in good faith as supplied but cannot be guaranteed.



## GENERAL

<b>Model</b>	TRINTELLA 44
<b>Type</b>	sailing yacht
<b>LOA (m)</b>	13,40
<b>LWL (m)</b>	10,80
<b>Beam (m)</b>	4,10
<b>Draft (m)</b>	2,20
<b>Headroom (m)</b>	2,10
<b>Year built</b>	1978
<b>Builder</b>	Anne Wever, Trintella Yachts
<b>Country</b>	The Netherlands
<b>Designer</b>	Van de Stadt & Partners
<b>Displacement (t)</b>	19
<b>Ballast (tonnes)</b>	lead - 6
<b>Hull material</b>	GRP
<b>Hull colour</b>	white
<b>Hull shape</b>	round-bilged
<b>Keel type</b>	fin keel
<b>Superstructure material</b>	GRP
<b>Rubbing strake</b>	stainless steel
<b>Deck material</b>	teak
<b>Deck finish</b>	teak - 2012
<b>Superstructure deck finish</b>	teak - 2012
<b>Cockpit deck finish</b>	teak - 2012
<b>Antifouling (year)</b>	2023
<b>Dorades</b>	4x
<b>Window frame</b>	aluminium
<b>Window material</b>	polycarbonate
<b>Deckhatch</b>	2 x
<b>Portholes</b>	10 x
<b>Fuel tank (litre)</b>	200



Level indicator (fuel tank)	yes
Freshwater tank (litre)	GRP - 600
Level indicator (freshwater)	yes
Blackwater tank (litre)	yes
Wheel steering	mechanical
Emergency tiller	yes
More info on hull	new Antifouling 2022

## ACCOMMODATION

Cabins	3
Berths	6
Interior	teak
Floor	teak and holly
Aft deck	yes
Saloon	U-shaped
Chart table	yes
Aft Cabin	yes
Dinette	yes
Galley	longitudinal kitchen
Countertop	tiles
Sink	stainless steel - 2
Cooker	electric   calor gas   gas   Gas - Scholtes
Fridge	Isotherm ASU
Hot water system	220V + engine
Water pressure system	electrical
Manual and/or foot pump	yes
Owners cabin	double bed
Wardrobe	hanging and shelves
Bathroom	en suite
Toilet	en suite
Toilet system	manual



Wash basin	in the bathroom
Shower	en suite
Guest cabin 1	v-bed
Wardrobe	hanging and shelves
Bathroom	shared
Toilet	shared
Toilet system	manual
Wash basin	in the bathroom
Shower	shared
Guest cabin 2	bunk bed

## MACHINERY

No of engines	1
Make	Perkins
Type	Sabre M135
HP	125
kW	92
Fuel	diesel
Year installed	1994
Engine cooling system	freshwater heat exchanger
Drive	shaft
Engine controls	bowden cable
Gearbox	yes
Bowthruster	electric - MaxPower
Exhaust	watercooled
Propeller type	fixed
Propeller blades	3
Propeller shaft material	stainless steel
Shaft lubrication	grease
Manual bilge pump	yes
Electric bilge pump	yes



<b>Electrical installation</b>	12V / 24 V / 220V
<b>Start battery</b>	2 years - 2
<b>Service battery</b>	4 years - 4
<b>Battery monitor</b>	yes
<b>Battery charger</b>	Victron Energy 24V / 50 A
<b>Shorepower</b>	with cable

## NAVIGATION

<b>Compass</b>	2 x Contest
<b>Depth sounder</b>	Raymarine ST60+
<b>Depth sounder/log</b>	Raymarine ST60+
<b>Windset</b>	Raymarine ST60+
<b>Autopilot</b>	Raymarine ST6002
<b>Plotter/GPS</b>	Raymarine A50
<b>Navigation lights</b>	yes

## EQUIPMENT

<b>Fixed windscreen</b>	yes
<b>Sprayhood</b>	yes
<b>Bimini</b>	yes
<b>Cockpit cushions</b>	yes
<b>Cockpit table</b>	yes
<b>Boarding ladder</b>	stainless steel
<b>Anchor</b>	CQR Plough - 30 kg
<b>Anchor chain</b>	60 m
<b>Anchor 2</b>	25 kg
<b>Windlass</b>	electrical
<b>Outboard</b>	Mercury
<b>Outboard support</b>	yes
<b>Sea railing</b>	wire
<b>Pushpit</b>	yes



<b>Pulpit</b>	yes
<b>Life raft</b>	yes
<b>Last life raft survey</b>	needs service
<b>Radar reflector</b>	yes
<b>Fenders</b>	yes
<b>Mooring lines</b>	yes
<b>Speakers in salon</b>	Blaupunkt
<b>Fire extinguisher</b>	yes

## RIGGING

<b>Rigging</b>	sloop-cutter
<b>Standing rigging</b>	wire - 2012
<b>Brand mast</b>	Sparlight
<b>Material mast</b>	aluminium
<b>Spreaders</b>	single
<b>Mainsail cover</b>	yes
<b>Fully battened mainsail</b>	20 years - 39,5 m2
<b>Genoa</b>	8 years - 72,7 m2
<b>Genoa furler</b>	yes
<b>Genoa cover</b>	yes
<b>Boomvang</b>	mechanical
<b>Secondary sheet winch</b>	manual - 1 X Barlow
<b>Genoa sheetwinches</b>	Electric - 2 x Barlow
<b>Halyard winches</b>	on Mast - 2 x Barlow
<b>Reefing winch</b>	on Mast
<b>Spi-pole</b>	aluminium



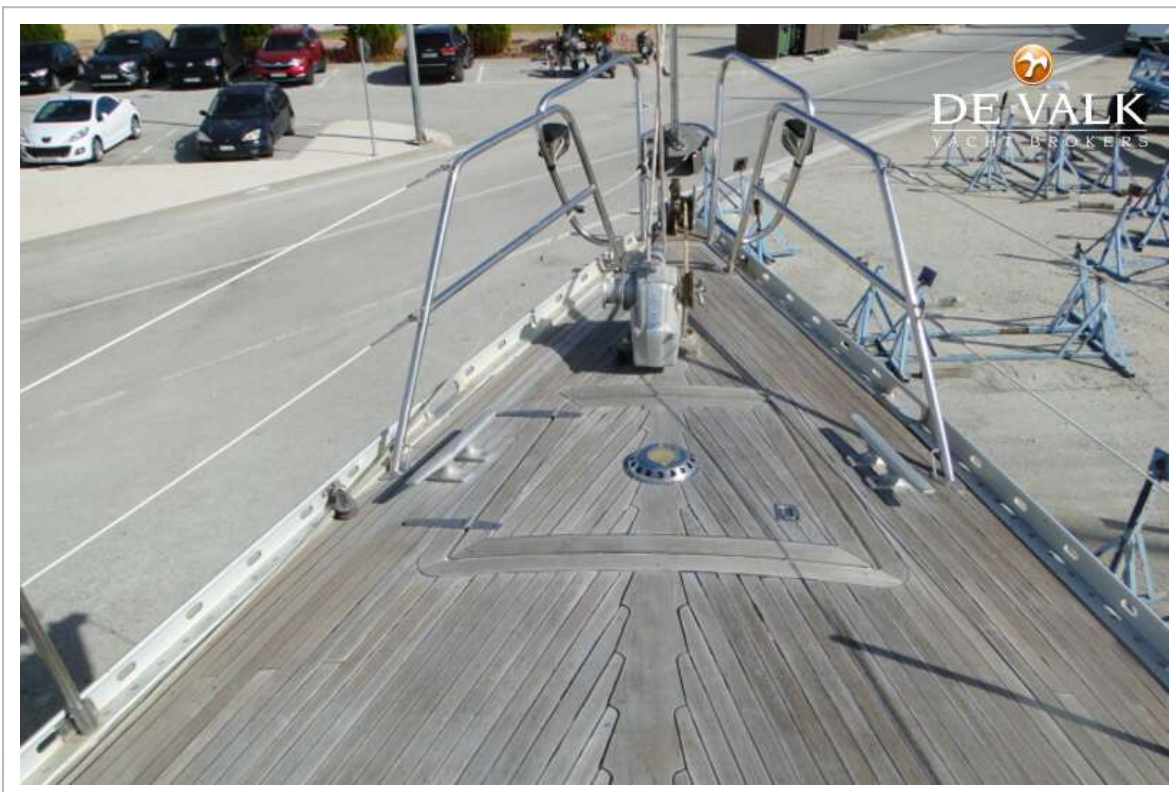


# TRINTELLA 44





# TRINTELLA 44

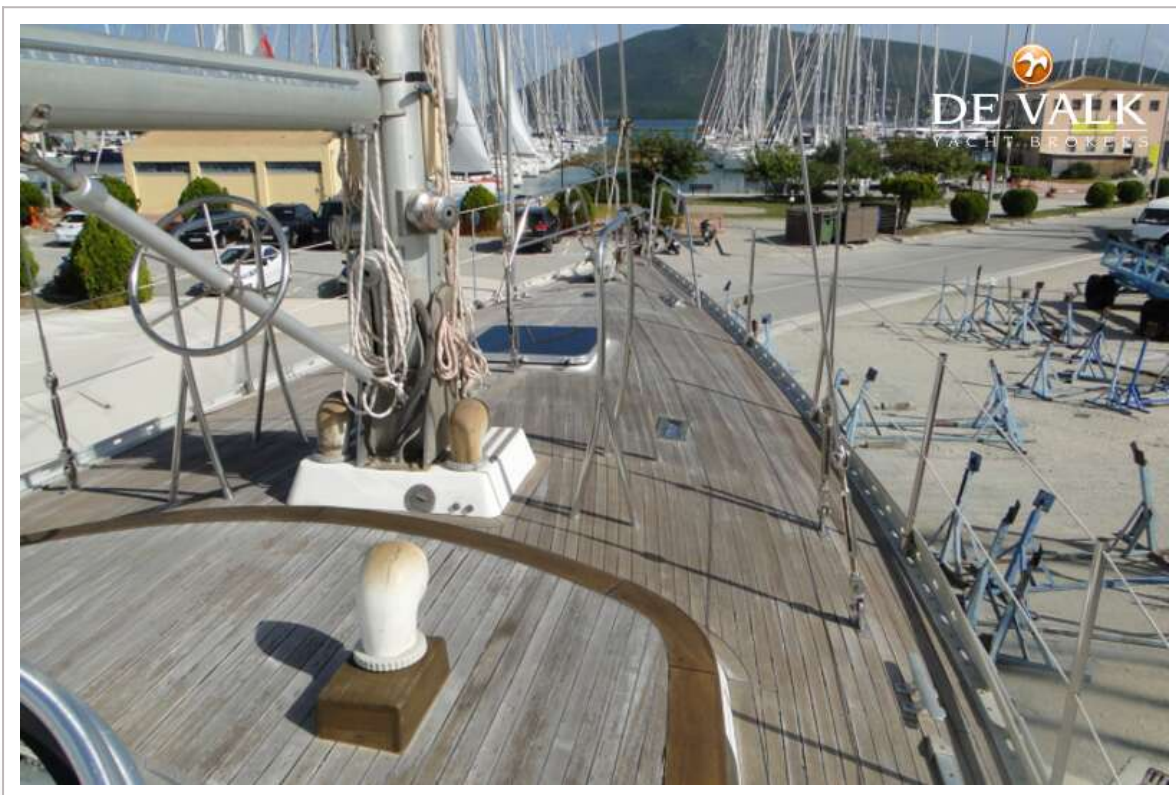




# TRINTELLA 44



# TRINTELLA 44





# TRINTELLA 44



# TRINTELLA 44





# TRINTELLA 44

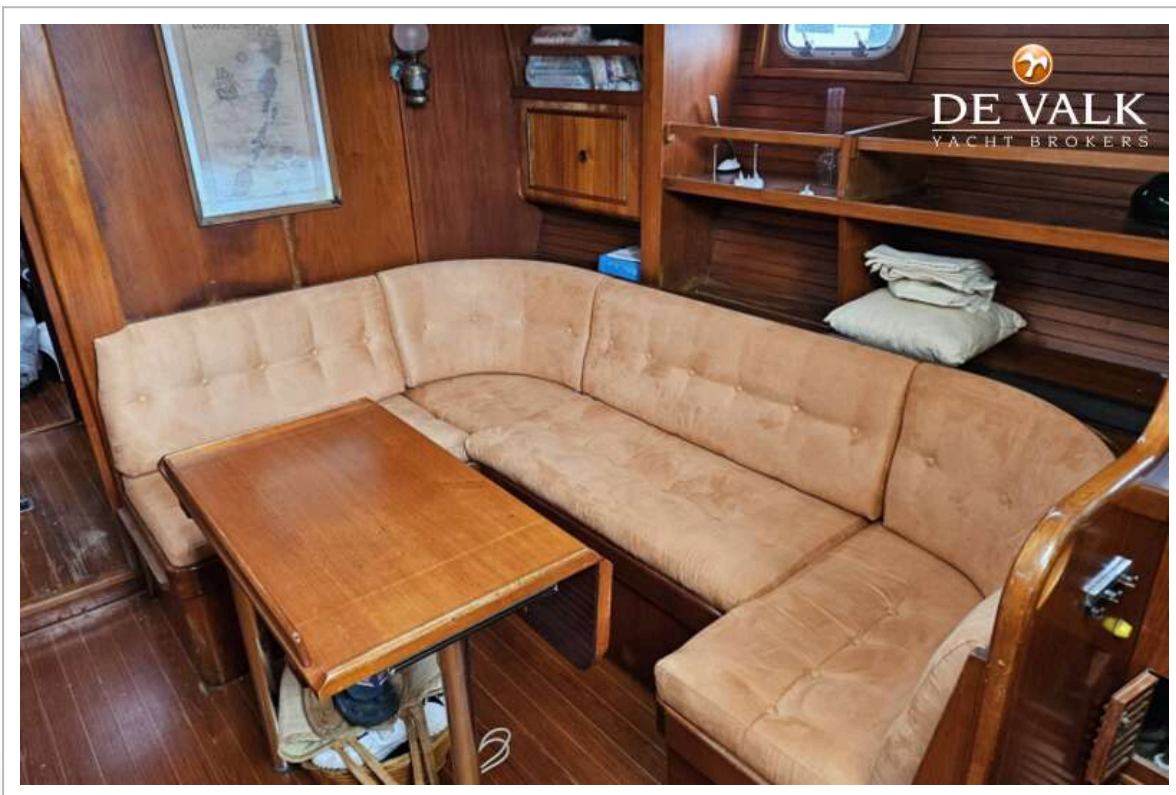




# TRINTELLA 44

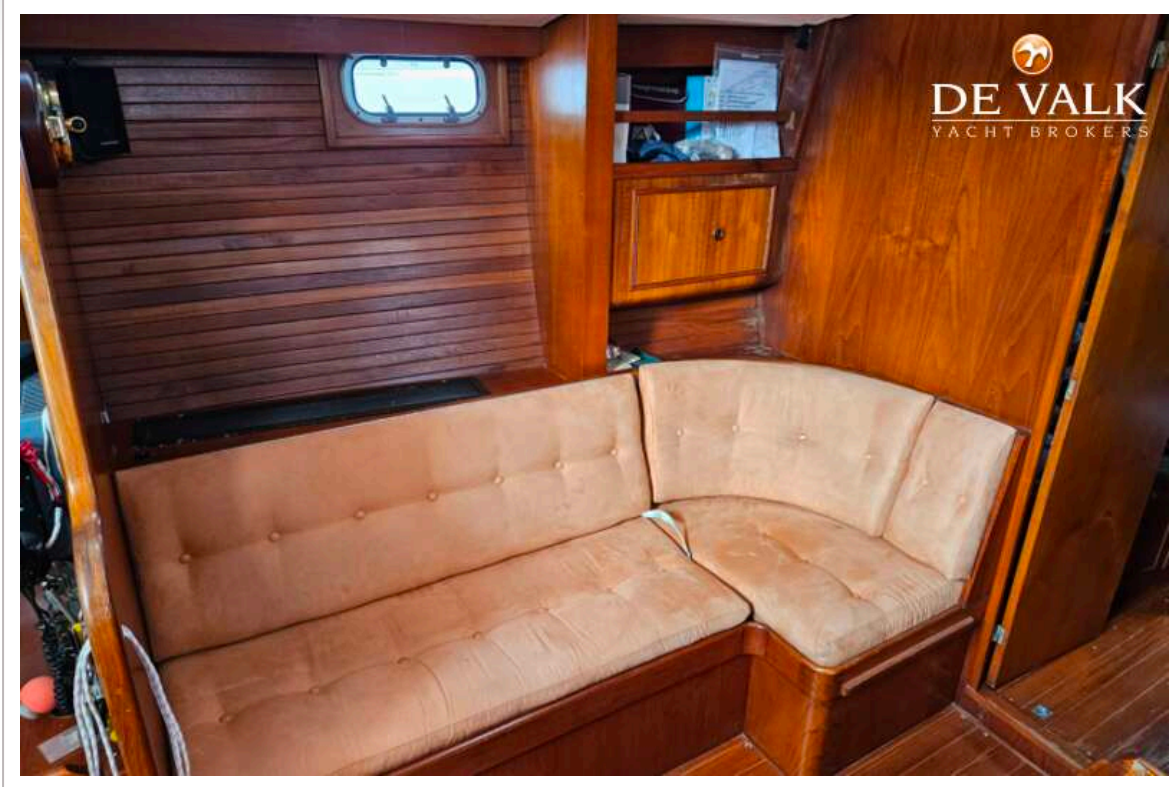


# TRINTELLA 44

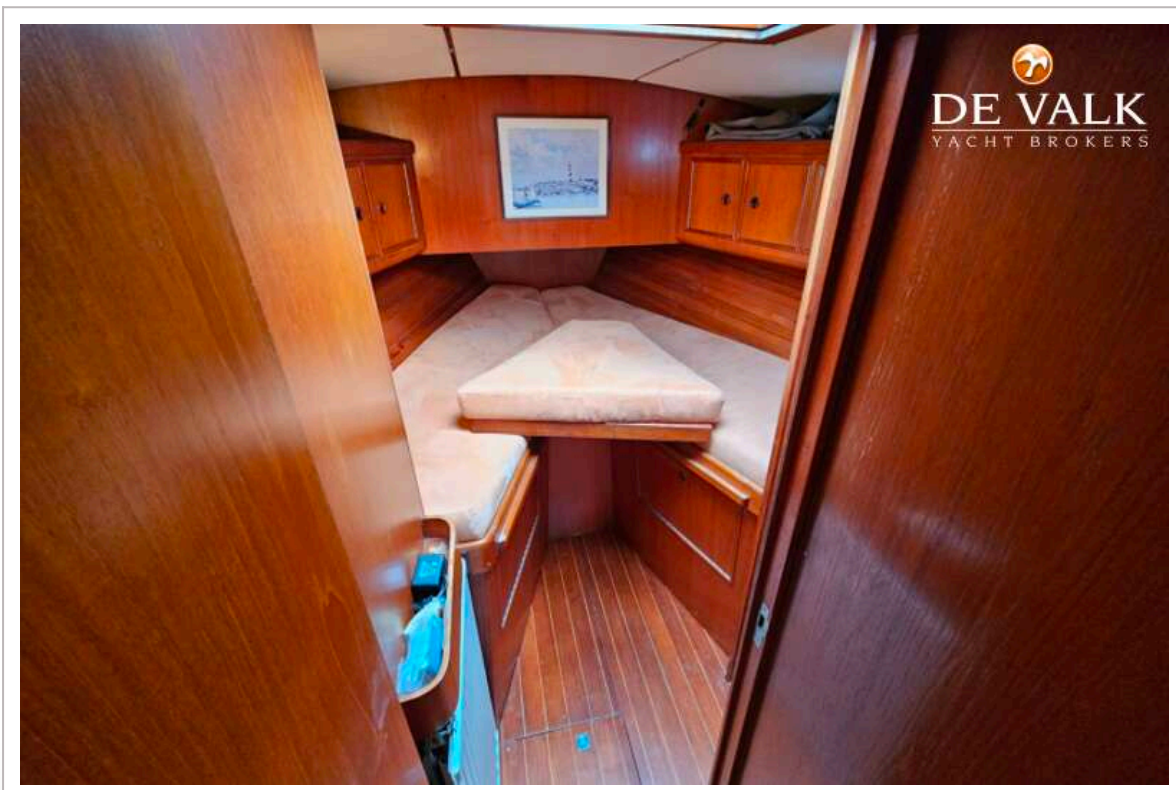
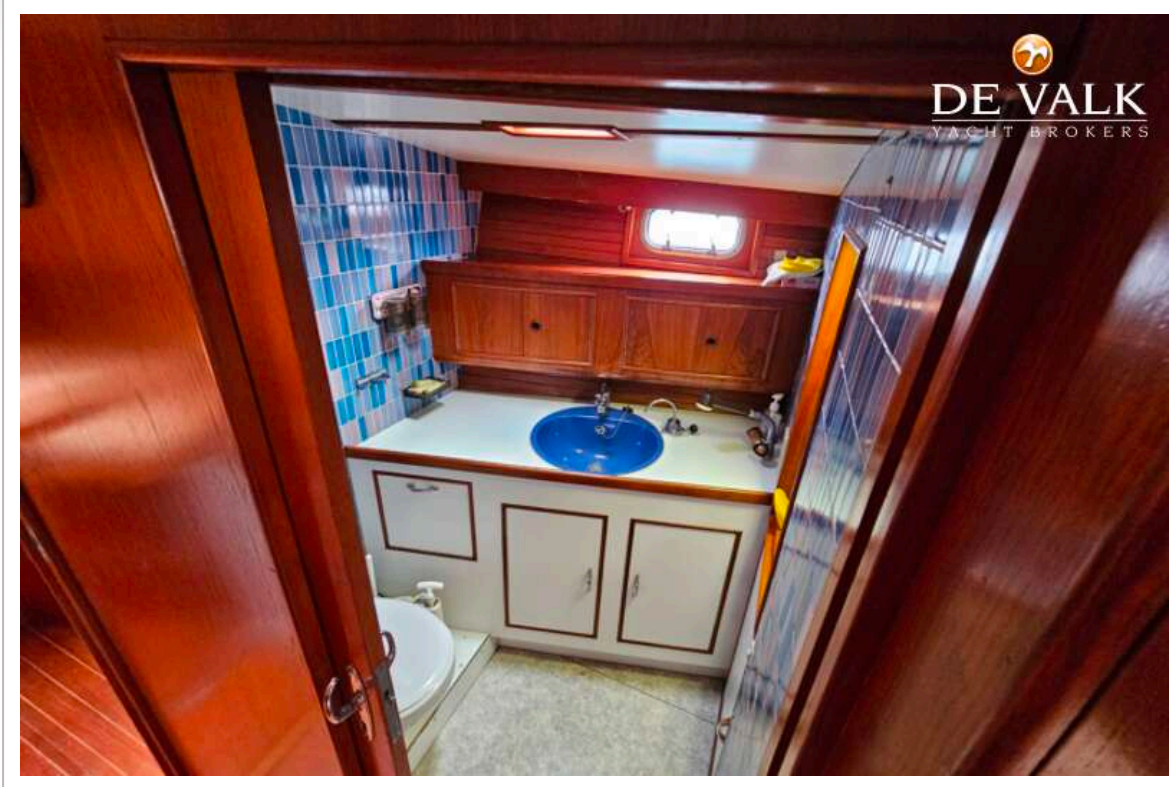




# TRINTELLA 44

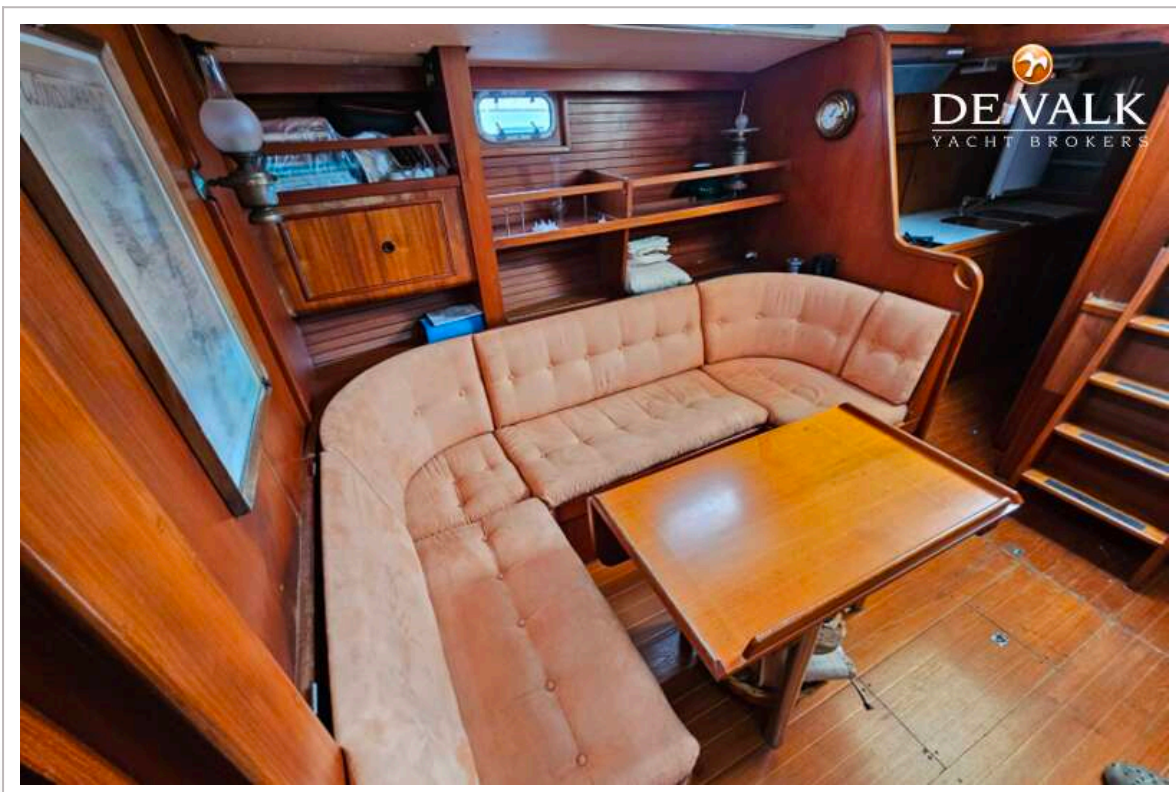


# TRINTELLA 44

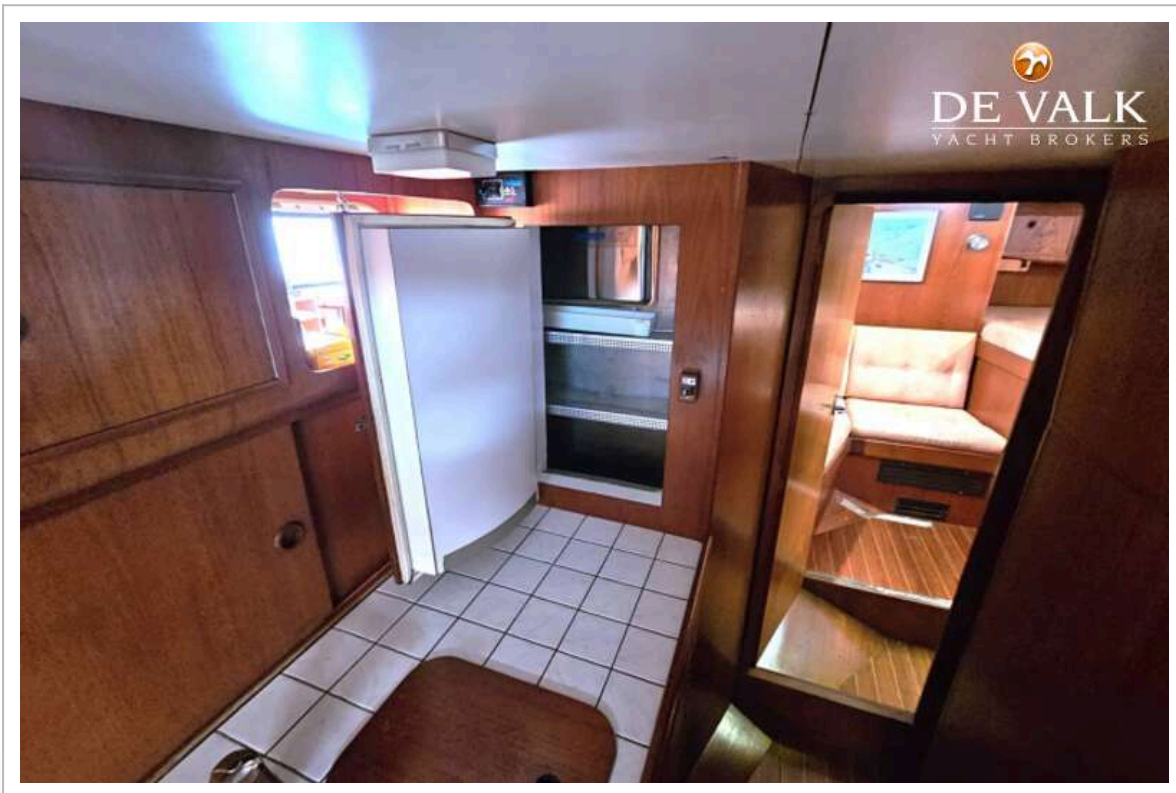




# TRINTELLA 44

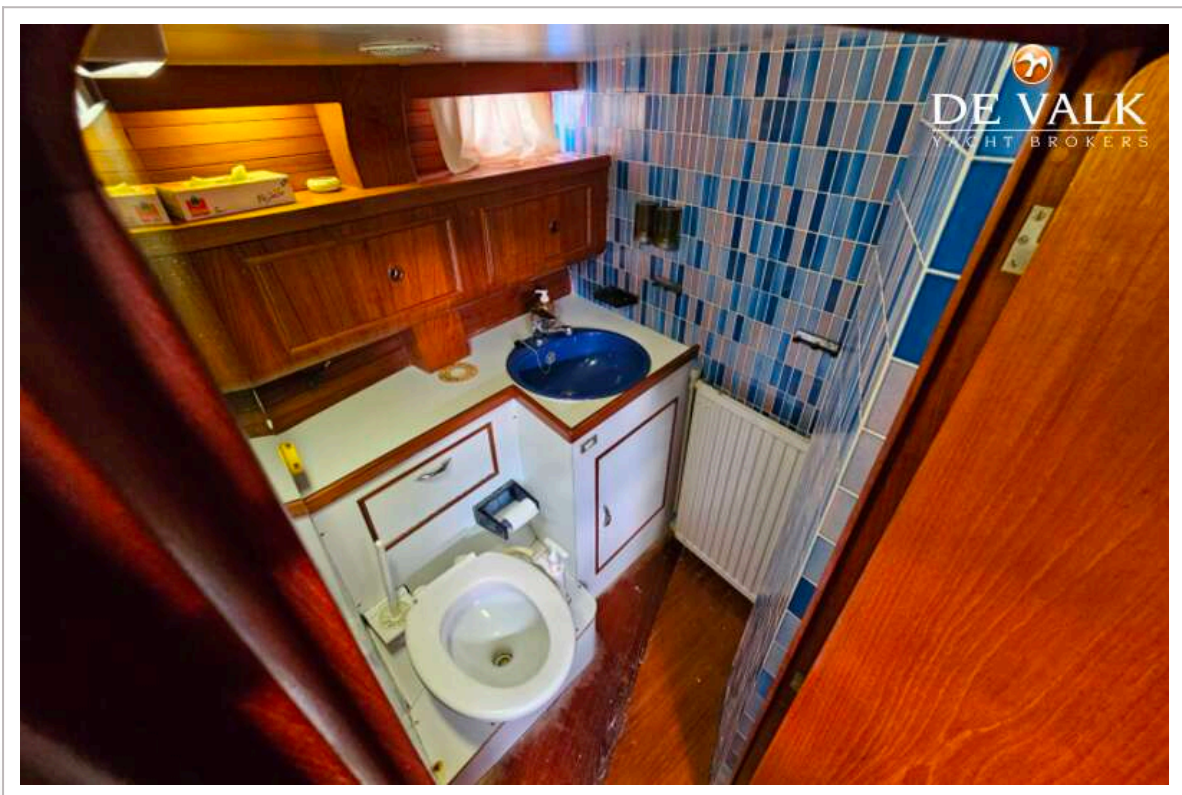
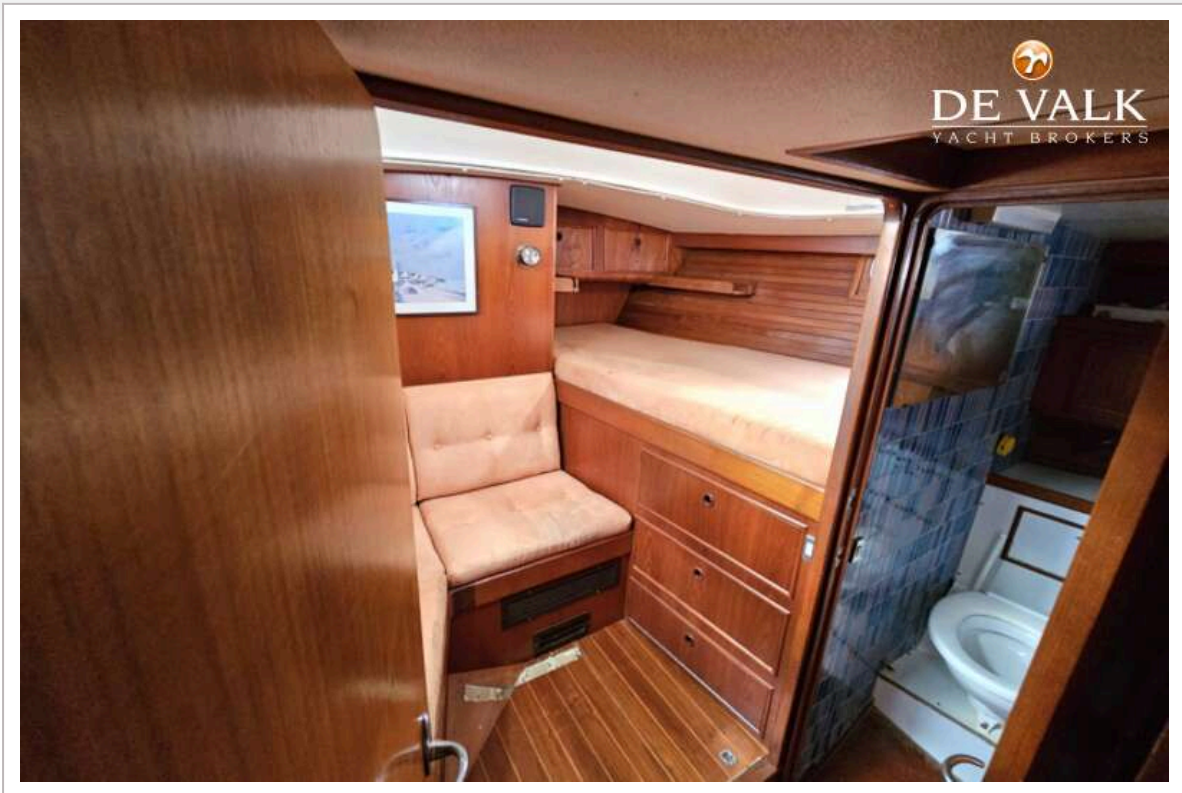


# TRINTELLA 44

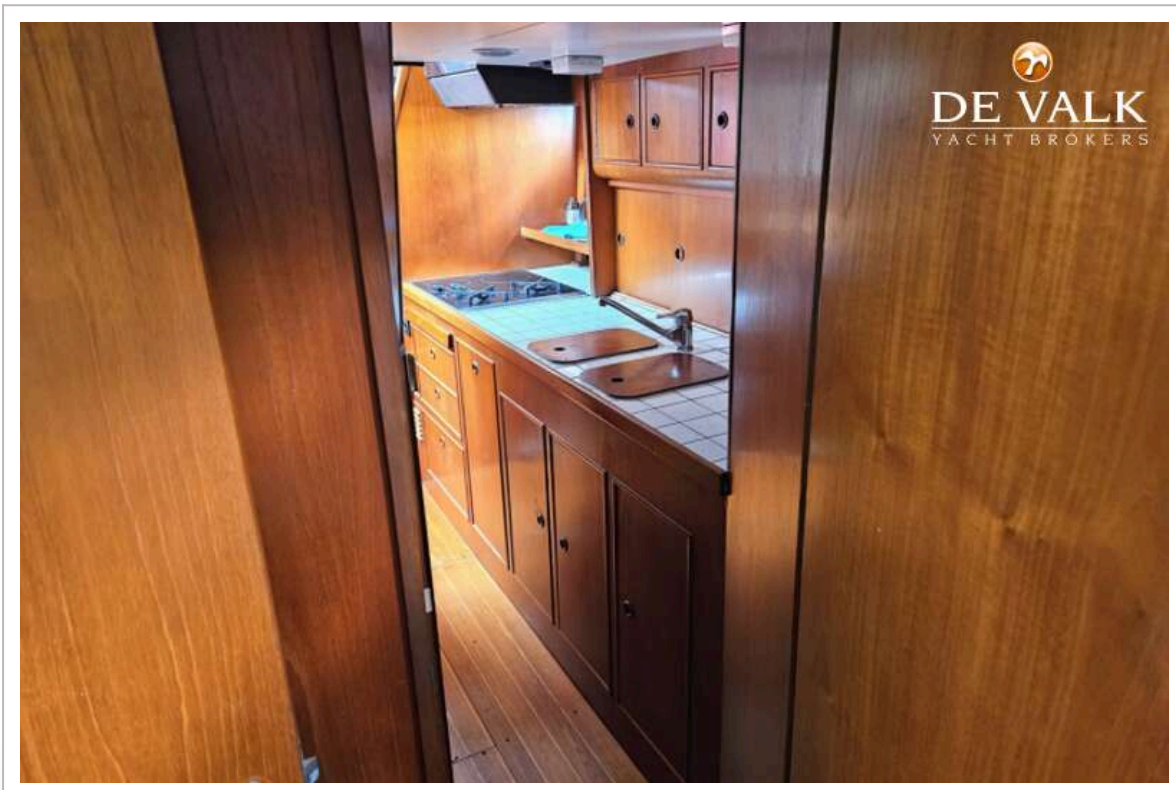




# TRINTELLA 44

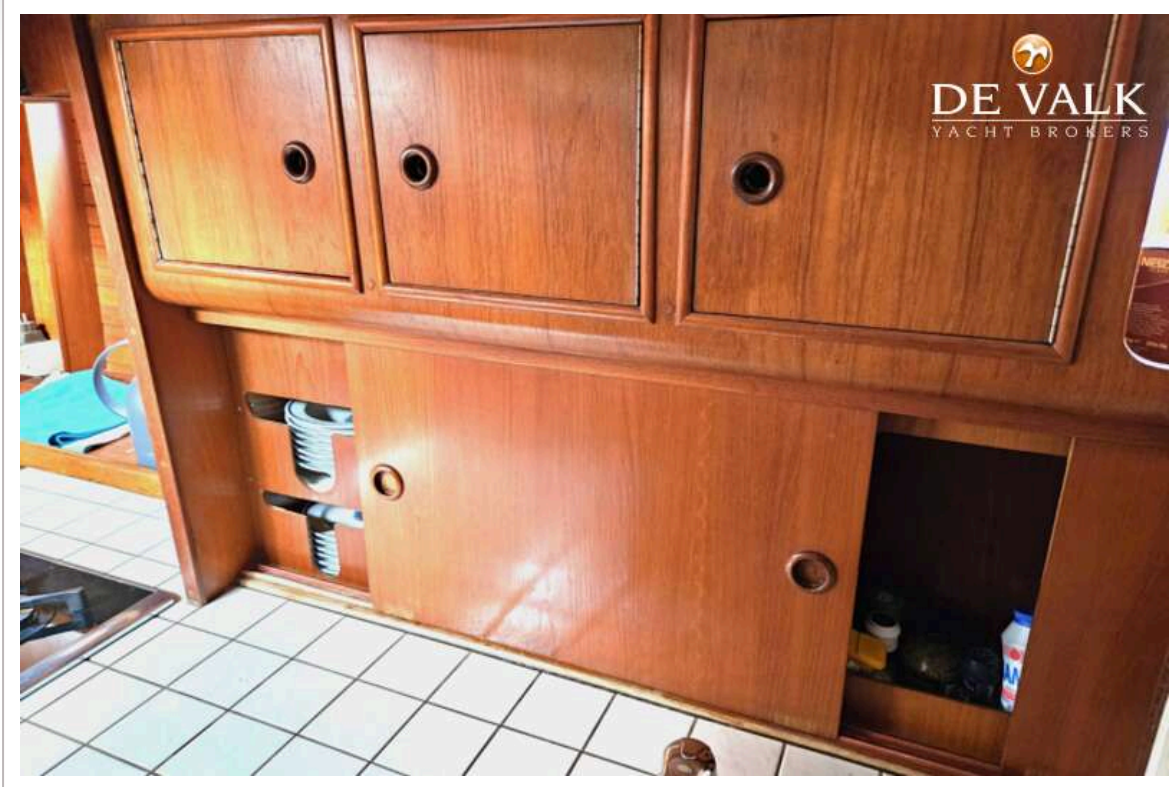


# TRINTELLA 44





# TRINTELLA 44



# TRINTELLA 44

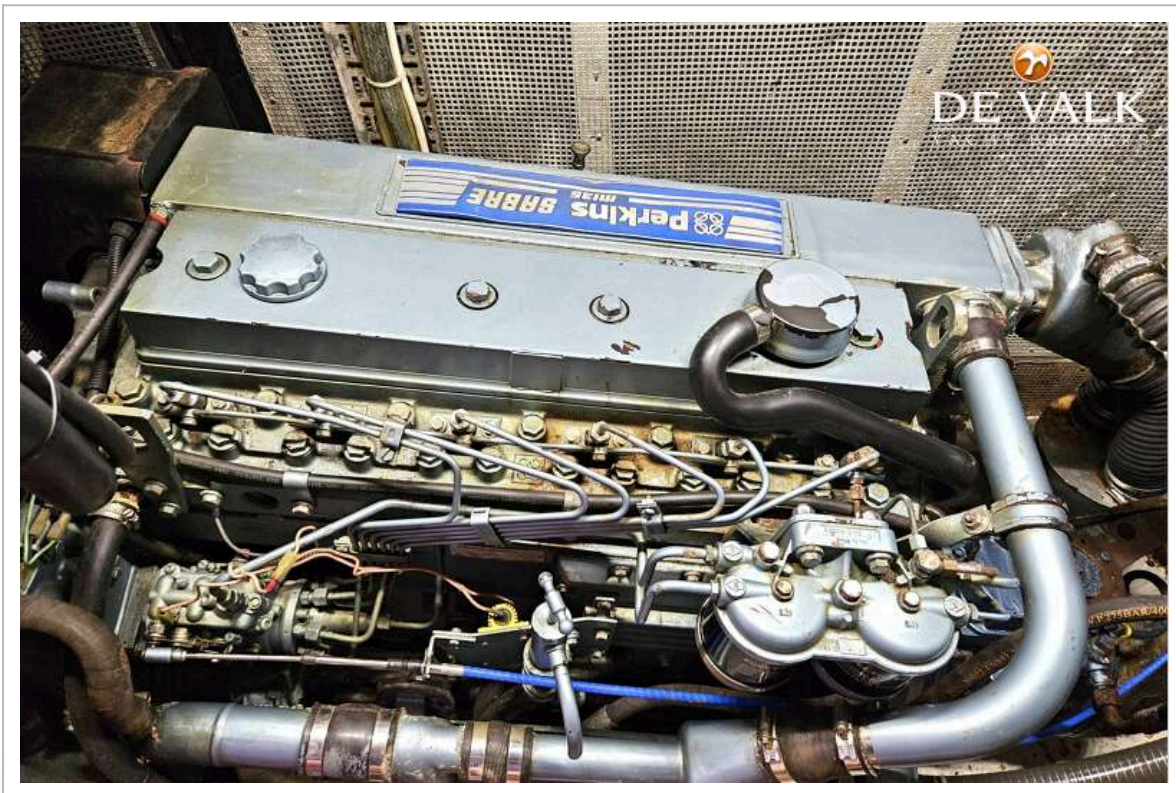




# TRINTELLA 44









# TRINTELLA 44

