



DE VALK  
YACHT BROKERS



## NAVY TENDER 1680



**DE VALK**  
YACHT BROKERS

# NAVY TENDER 1680

## BROKER'S COMMENTS

Navy Tender 1680 "Wending" built in 1939 for the German Navy, in 2012 the total refit was completed, down to the bare ribs and rebuilt including new skin, systems, engines, superstructure, and since then the "Wending" has been sailing again . . until the current owner had the Navy Tender professionally tackled again in 2022, most important aspects during this major refit have been : guest cabin in front with V-bed , dinette for 4 people, new kitchen including appliances, and in terms of technology huge improvements have been made. "Wending" is ready to sail. Welcome in Sneek !

*Henk de Vries*

## SPECIFICATIONS

<b>Dimensions</b>	16.80 x 4.25 x 1.30 (m)	<b>Builder</b>	Gebroeders de Jong Alphen a/d Rijn
<b>Built</b>	2012	<b>Cabins</b>	2
<b>Material</b>	Steel	<b>Berths</b>	4
<b>Engine(s)</b>	2 x Mercedes-Benz V6 OM 421 diesel	<b>Hp/Kw</b>	2 x 220.00 (hp), 161.92 (kw)
<b>Asking price</b>	€ 249.500 (VAT Paid)	<b>Lying</b>	at sales office

## CONTACT

<b>Sales office</b>	De Valk Sneek	<b>Telephone</b>	+31 515 42 80 30
<b>Address</b>	Zwolsmanweg 7 8606 KC Sneek The Netherlands	<b>E-mail</b>	sneek@devalk.nl

## DISCLAIMER

These particulars are given in good faith as supplied but cannot be guaranteed.



# NAVY TENDER 1680

## GENERAL

<b>Model</b>	NAVY TENDER 1680
<b>Type</b>	motor yacht
<b>LOA (m)</b>	16,80
<b>Beam (m)</b>	4,25
<b>Draft (m)</b>	1,30
<b>Air draft (m)</b>	2,70
<b>Headroom (m)</b>	2,00
<b>Year built</b>	2012
<b>Launched</b>	1939
<b>Builder</b>	Gebroeders de Jong Alphen a/d Rijn
<b>Country</b>	The Netherlands
<b>Displacement (t)</b>	30
<b>Ballast (tonnes)</b>	lead
<b>CE norm</b>	NA
<b>Hull material</b>	steel
<b>Hull colour</b>	black
<b>Hull thickness (mm)</b>	5
<b>Hull shape</b>	round-bilged
<b>Keel type</b>	long keel
<b>Bilge keels</b>	yes
<b>Superstructure material</b>	teak And steel
<b>Deck plate thickness (mm)</b>	6/8
<b>Rubbing strake</b>	steel
<b>Deck material</b>	steel
<b>Deck finish</b>	non-skid paint
<b>Superstructure deck finish</b>	paint
<b>Antifouling (year)</b>	2022
<b>Dorades</b>	yes
<b>Window frame</b>	aluminium
<b>Window material</b>	double glazing



# NAVY TENDER 1680

Deckhatch	yes
Portholes	brass
Insulation	rockwool
Mast can be lowered	hydraulic Stainless Steel
Fuel tank (litre)	steel 2 x 260 (new 2022)
Fuel tank 2 (litre)	350 for generator ( new 2022)
Level indicator (fuel tank)	yes
Freshwater tank (litre)	stainless steel 1100
Level indicator (freshwater)	yes
Blackwater tank (litre)	stainless steel 400
Level indicator (blackwater)	yes
Blackwater tank extraction	deck extraction + pump
Wheel steering	hydraulic
Inside helm position	yes

## ACCOMMODATION

Cabins	2
Berths	4
Interior	teak
Floor	carpet
Pilot house/deck saloon	yes
Headroom saloon (m)	2,14
Sliding roof	manual
Heating	central heating Kabola HR 400 Combi 230V
Aft Cabin	yes
Dinette	(new 2022)
Sliding door to cockpit	2 x
Galley	yes
Countertop	(new 2022) LG
Sink	stainless steel (new 2022)
Cooker	electric 4-pits Siemens ( new 2022)



# NAVY TENDER 1680

Microwave/oven combi	yes
Fridge	Dometic CRX 140 compr. 12V (new 2022)
Freezer	In fridge
Hot water system	on central heating
Water pressure system	electrical
Owners cabin	double bed
Bed length (m)	1,60 x 2,20
Wardrobe	hanging and drawers
Bathroom	shared
Toilet	separate
Toilet system	electric
Wash basin	in the bathroom
Shower	shared
Guest cabin 1	v-bed (new 2022)
Bed length (m)	80 x 2,20
Wardrobe	yes
Washing machine/dryer combi	Euronova 1180 Rapid (new 2022)

## MACHINERY

No of engines	2
Make	Mercedes-Benz V6
Type	OM 421
HP	220
kW	161.92
Fuel	diesel
Year installed	2011
Maximum speed (kn)	10,5
Cruising speed (kn)	9
Consumption (l/hr)	6
Engine hours	1775
Engine cooling system	hopper cooling Hopper cooling Blokland



# NAVY TENDER 1680

<b>Drive</b>	shaft
<b>Shaft seal</b>	yes
<b>Engine controls</b>	bowden cable
<b>Gearbox</b>	hydraulic Twin Disc
<b>Bowthruster</b>	Vetus 180 kgf 24V (new 2022)
<b>Exhaust</b>	watercooled
<b>Thrust bearing</b>	yes
<b>Propeller type</b>	fixed
<b>Propeller blades</b>	5
<b>Propeller shaft material</b>	stainless steel
<b>Shaft lubrication</b>	grease
<b>Electric bilge pump</b>	yes
<b>Electrical installation</b>	12V / 24V / 230V
<b>Generator</b>	silent separator Whisper Power MS Q10 (service 2022)
<b>Running hours generator</b>	1150
<b>Batteries</b>	8 x (new 2022)
<b>Start battery</b>	2x AGM
<b>Service battery</b>	4x Deep Cycle AGM 200Ah
<b>Generator battery</b>	1x AGM
<b>Bowthruster battery</b>	AGM 170Ah
<b>Battery charger</b>	Victron Blue Power 12/17 + Victron Orion 24/12-25
<b>Inverter</b>	yes
<b>Battery charger/inverter</b>	Victron MultiPlus 24/3000/70
<b>Solar panel</b>	Victron Energy 305W-20V Mono (4b)
<b>Shorepower</b>	yes
<b>Insulation transformer</b>	yes
<b>Extra info</b>	Isolation engine room: Merfocell 40mm (2022)

## NAVIGATION

<b>Electric compass</b>	Raymarine
<b>Depth sounder/log</b>	Raymarine



VHF	Sailor RT2048
Autopilot	Raymarine
Rudder angle indicator	Raymarine
GPS	Raymarine
Plotter	Raymarine E Hybrid
Extra info	Navigation equipment 2015

## EQUIPMENT

Bimini	yes
Cockpit cushions	yes
Boarding ladder	steel
Anchor	yes
Anchor chain	yes
Windlass	manual
Deck wash	yes
Sea railing	steel
Railing side opening gates	yes
Wiper	2 x
Clearview window	Einar Weilbach & Co.
Horn	air pressure
Fenders	yes
Mooring lines	yes
Radio-cd player	Bang & Olufsen "BeoSound 1"
Clock - barometer	yes
Fire extinguisher	3 x



# NAVY TENDER 1680





# NAVY TENDER 1680



# NAVY TENDER 1680



# NAVY TENDER 1680



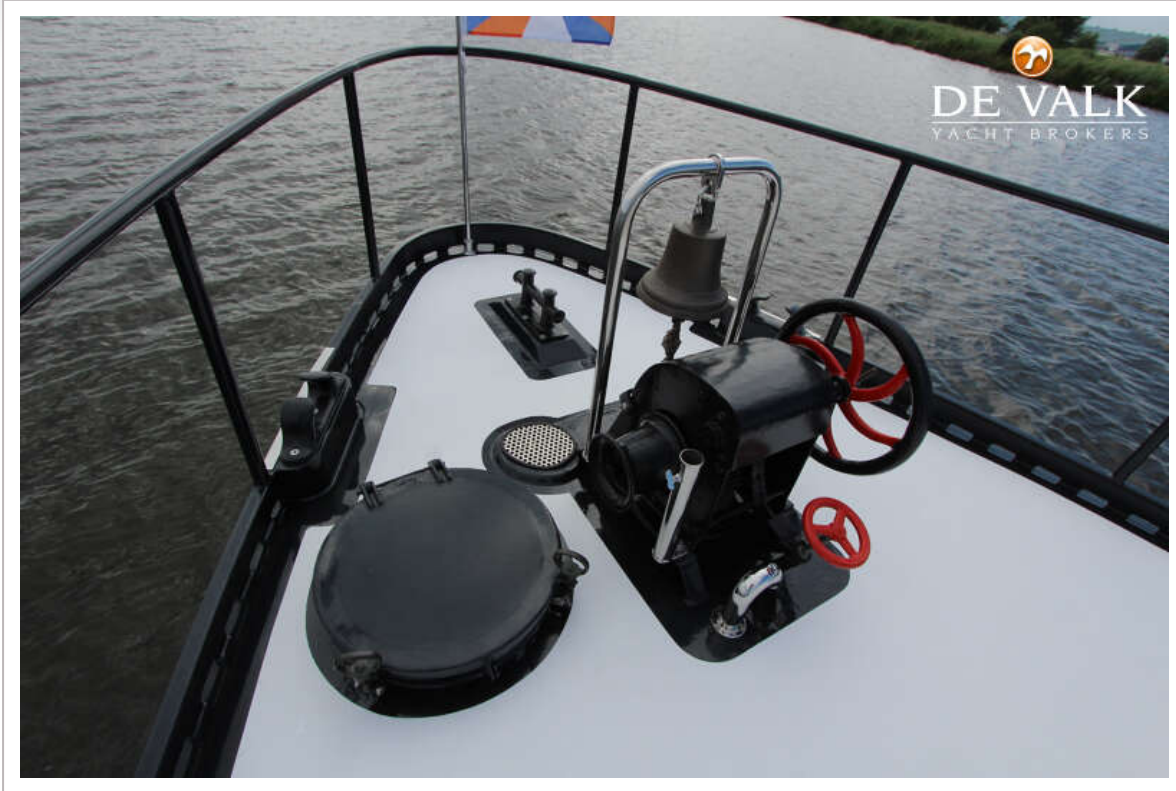
# NAVY TENDER 1680



# NAVY TENDER 1680



# NAVY TENDER 1680



# NAVY TENDER 1680

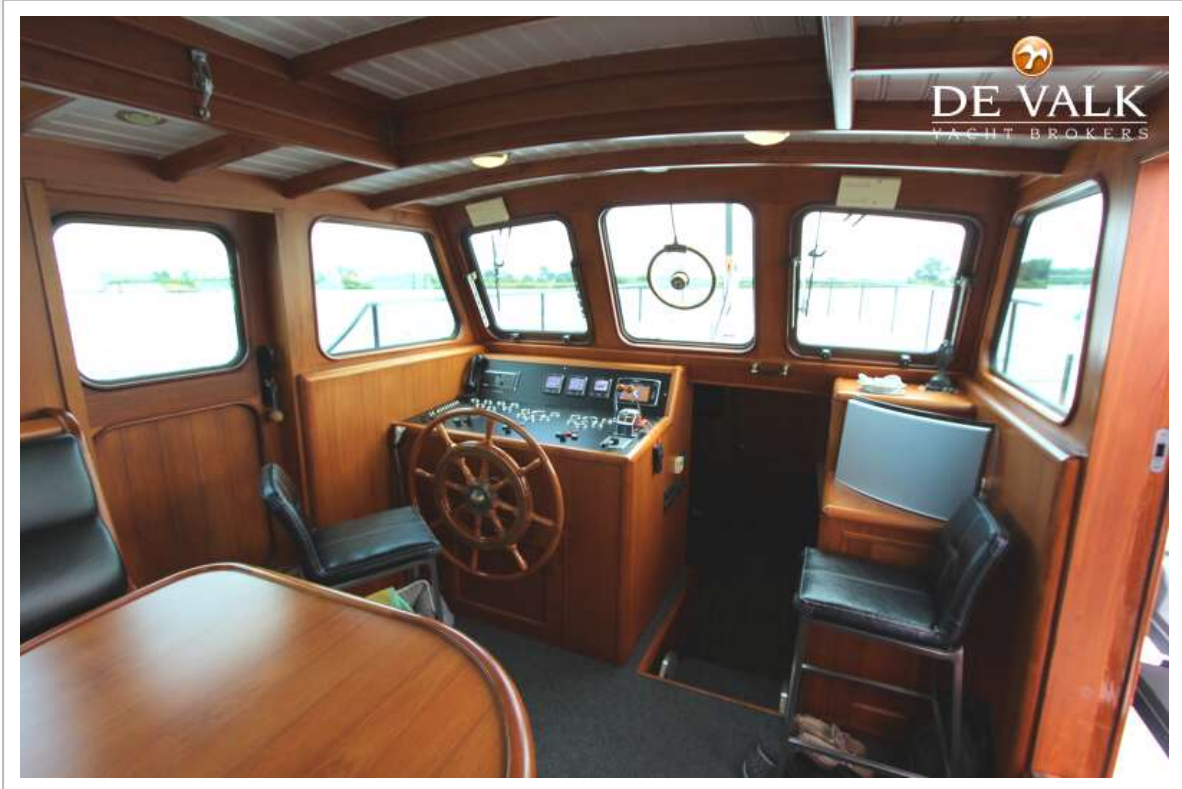


# NAVY TENDER 1680





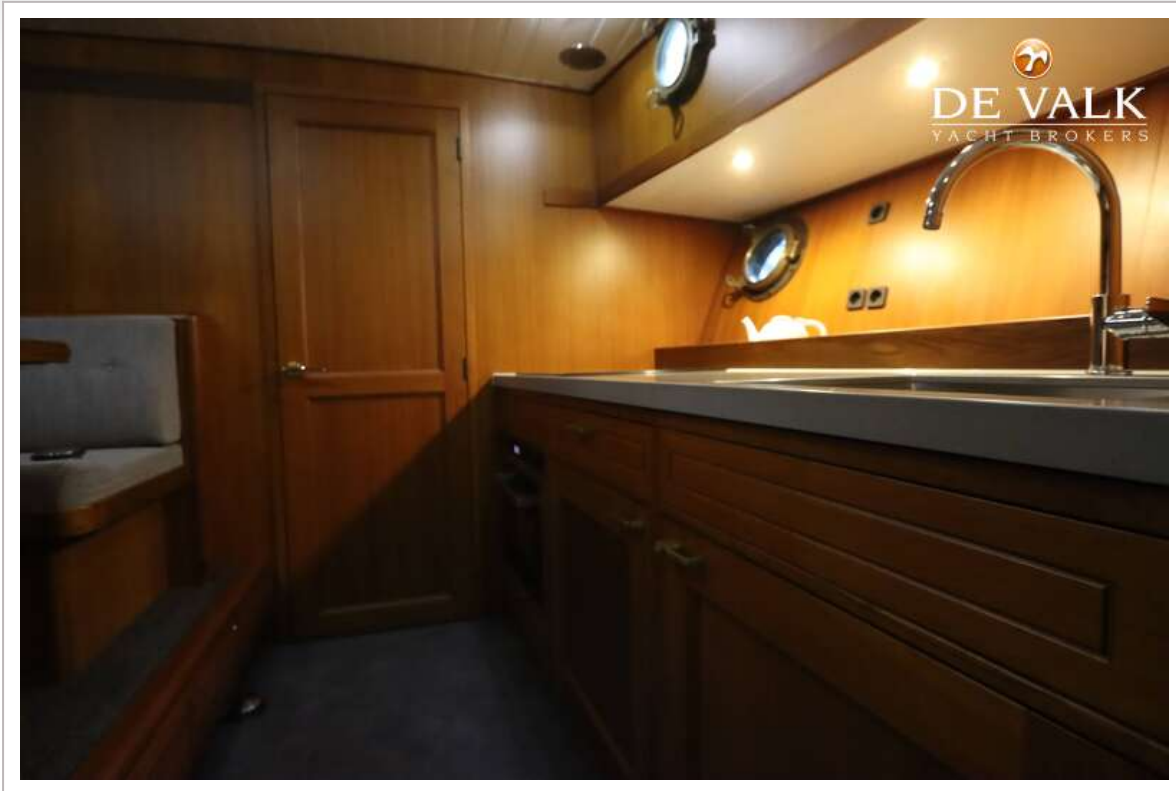
# NAVY TENDER 1680



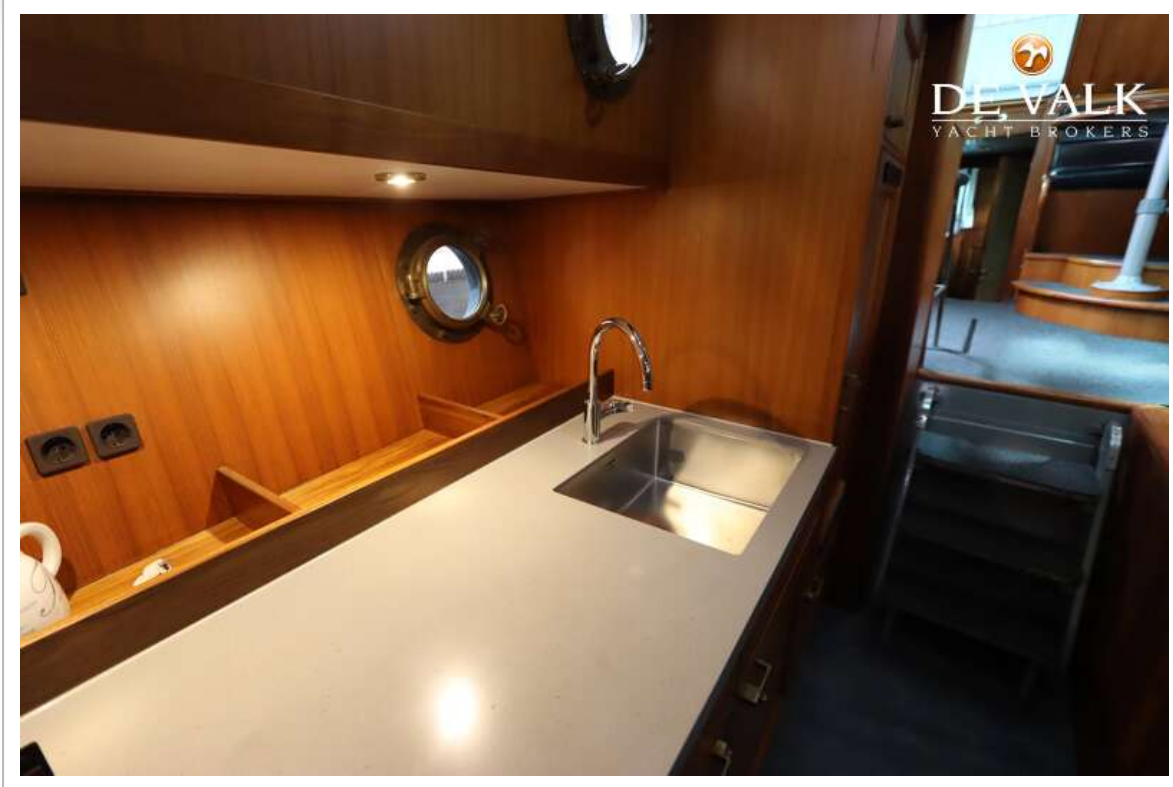
# NAVY TENDER 1680



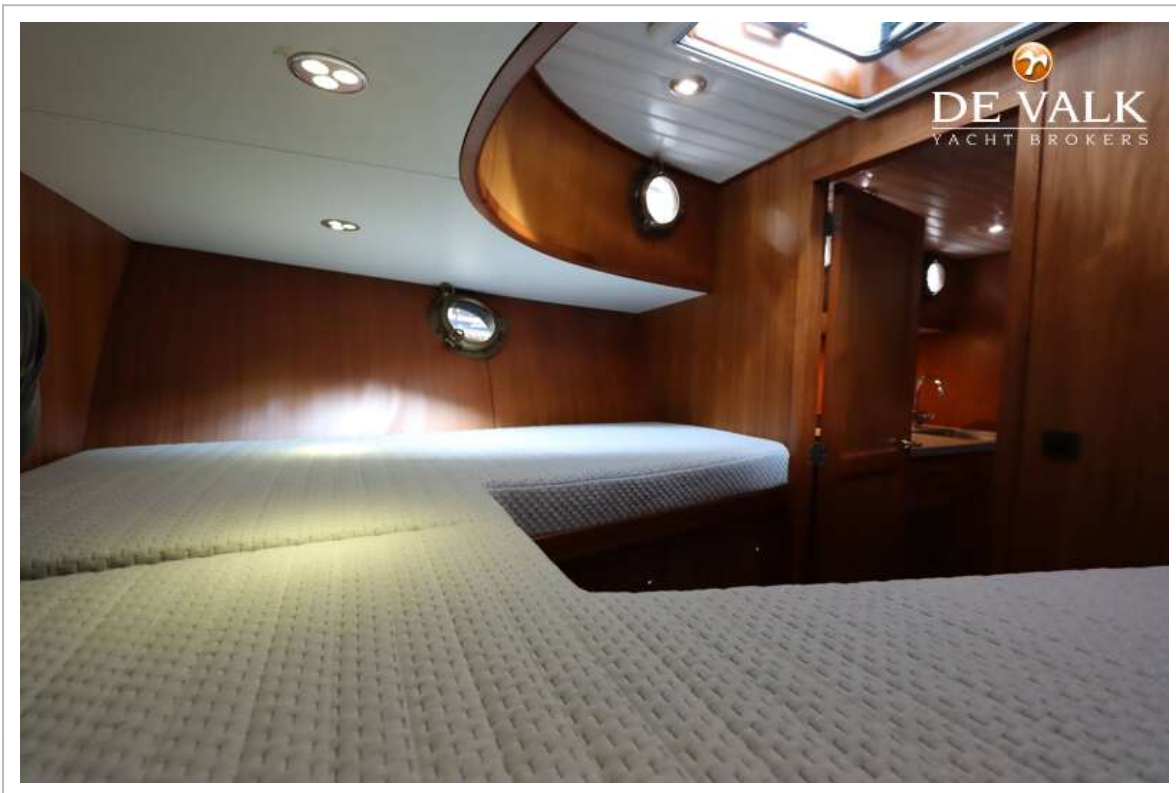
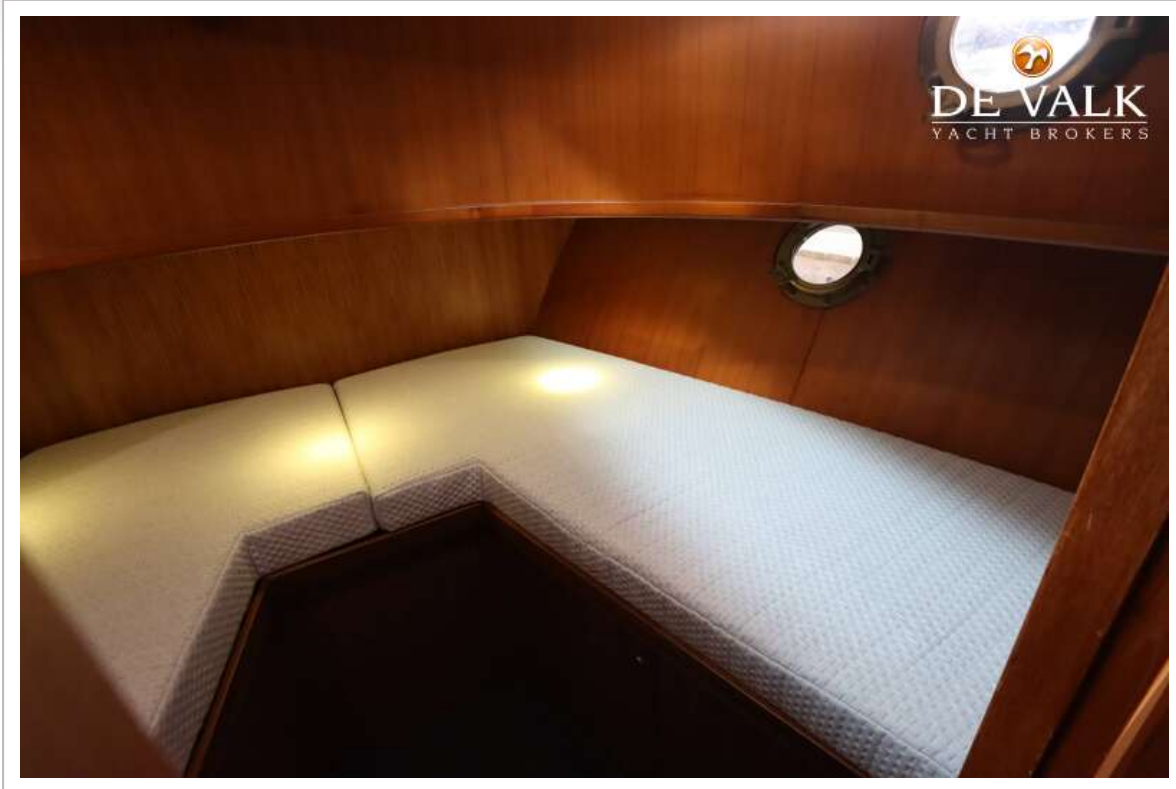
# NAVY TENDER 1680



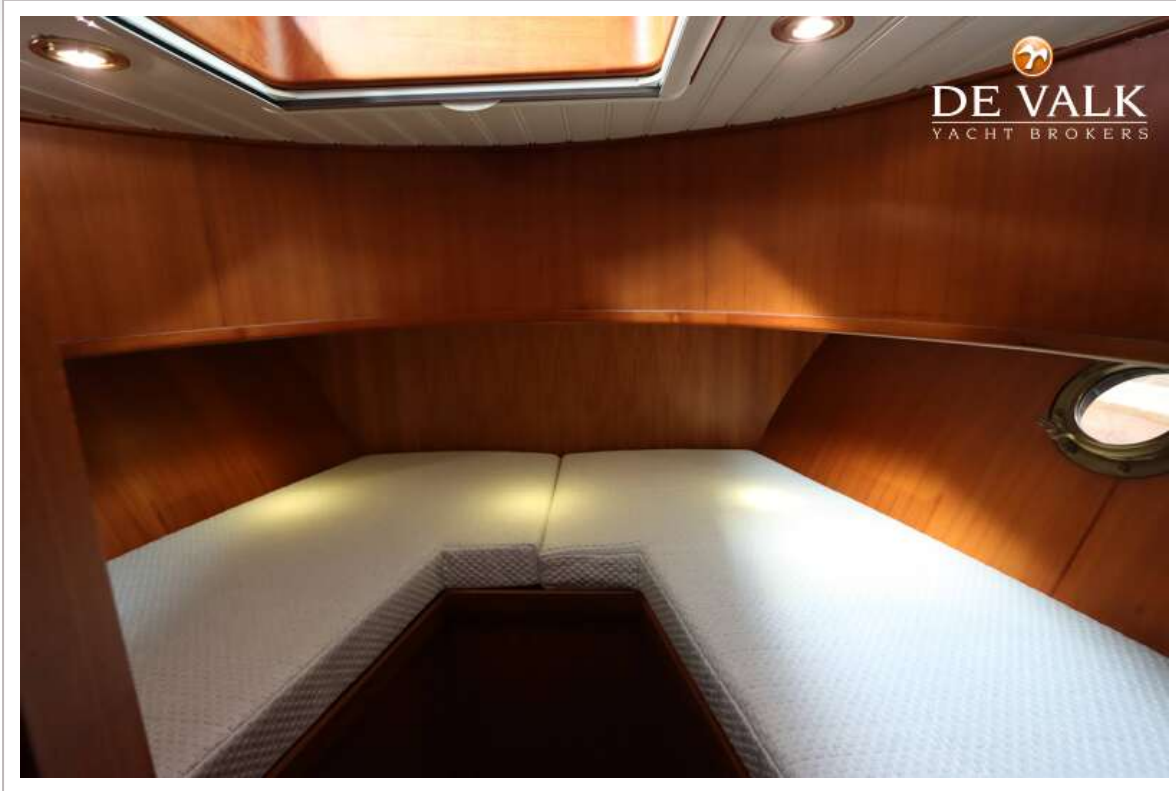
# NAVY TENDER 1680



# NAVY TENDER 1680



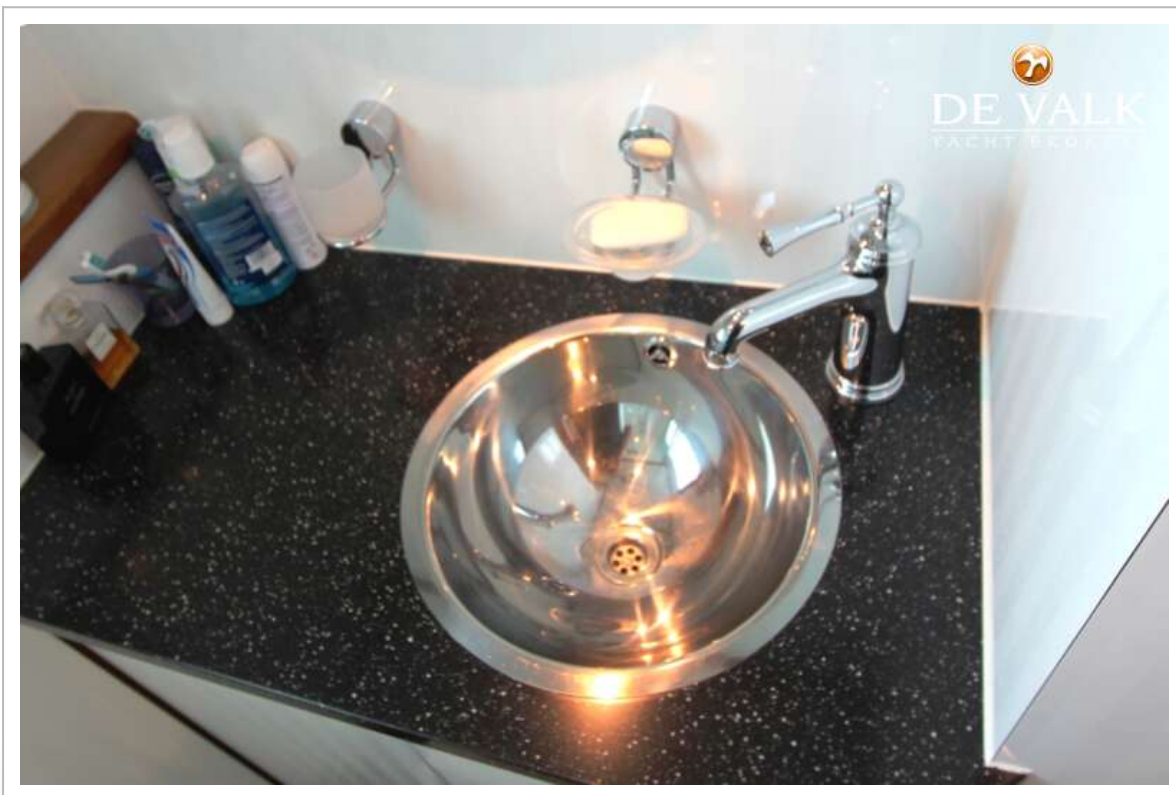
# NAVY TENDER 1680



# NAVY TENDER 1680



# NAVY TENDER 1680





# NAVY TENDER 1680

