



DE VALK
YACHT BROKERS



HALLBERG RASSY 45



DE VALK
YACHT BROKERS

HALLBERG RASSY 45

BROKER'S COMMENTS

The Hallberg Rassy 45 stands for excellent performance and outstanding sailing characteristics, in almost all conditions. The design by German Frers includes a centre cockpit that offers safety even in rough seas. Recently refitted and lovingly maintained by the owners, her age does not show. A new deck covering of cork from a German manufacturer promises a comfortable surface and excellent insulating properties, both hot and cold. Equipped with the latest electronics and safety equipment, she is an ideal sailing boat for your next blue water adventure.

Jörg Hellmich

SPECIFICATIONS

Dimensions	14.12 x 4.32 x 1.88 (m)	Builder	Hallberg Rassy
Built	1989	Cabins	3
Material	GRP	Berths	9
Engine(s)	1 x Volvo Penta TMD31A diesel	Hp/Kw	94.00 (hp), 69.18 (kw)
Asking price	€ 199.500 (VAT Paid)	Lying	at sales office

CONTACT

Sales office	De Valk Almeria	Telephone	+34 950 497 825
Address	Puerto de Almerimar Darsena de la Batea 1, No. 42, 04711 Almerimar Spain	E-mail	almeria@devalk.nl

DISCLAIMER

These particulars are given in good faith as supplied but cannot be guaranteed.



HALLBERG RASSY 45

GENERAL

Model	HALLBERG RASSY 45
Type	sailing yacht
LOA (m)	14,12
LWL (m)	11,60
Beam (m)	4,32
Draft (m)	1,88
Air draft (m)	21,00
Air draft min (m)	19,40
Headroom (m)	2,00
Year built	1989
Builder	Hallberg Rassy
Country	Sweden
Designer	German Frers
Displacement (t)	16
Ballast (tonnes)	cast iron and lead 6,4
CE norm	NA
Hull material	GRP
Hull colour	white
Hull shape	V-shaped hull
Keel type	fin keel with bulb
Superstructure material	GRP
Rubbing strake	stainless steel
Deck material	GRP
Deck finish	cork November 2022
Superstructure deck finish	cork November 2022
Cockpit deck finish	teak
Antifouling (year)	October 2022
Dorades	yes
Window frame	aluminium
Window material	perspex



HALLBERG RASSY 45

Deckhatch	5 hatches
Insulation	yes
Fuel tank (litre)	stainless steel 590 (390 + 200)
Level indicator (fuel tank)	Philippi TGT (NMEA2000)
Freshwater tank (litre)	aluminium 1000 in 4 tanks
Level indicator (freshwater)	Philippi TGT (NMEA2000)
Blackwater tank (litre)	polyethylene 80 + 60
Blackwater tank extraction	deck extraction + uw line
Wheel steering	chain steering
Outside helm position	chain steering
Emergency tiller	yes
More info on hull	In excellent comnditions

ACCOMMODATION

Cabins	3
Berths	9
Interior	mahogany
Layout	3 Cabin version
Floor	wood
Aft deck	yes
Saloon	yes
Headroom saloon (m)	2,00
Heating	diesel ducted hot air 2 x Webasto HL32
Chart table	yes
Aft Cabin	Owner(s) cabin
Convertible berth	In saloon
Galley	U-shape
Countertop	corian
Sink	stainless steel Double
Cooker	calor gas Force 10 (3 burner)
Oven	calor gas



HALLBERG RASSY 45

Gas alarm	Gas pipes checked 2022
Fridge	Frigomatic watercooled
Freezer	Frigomatic watercooled (2021)
Hot water system	220V + engine 50L. Boiler
Water pressure system	electrical
Manual and/or foot pump	yes
Hot water tap	yes
Crockery	Partial
Owners cabin	double bed + single bed
Bed length (m)	2,00 x 1,40 / 0,80
Wardrobe	hanging/drawers/shelves
Bathroom	en suite
Toilet	en suite
Toilet system	manual Blakes
Wash basin	at the toilet
Shower	en suite Seperate
Guest cabin 1	twin single Each side
Bed length (m)	2,00 x 0,80
Wardrobe	hanging/drawers/shelves
Toilet	en suite
Toilet system	manual Blakes
Wash basin	at the toilet
Shower	en suite Seperate
Extra info	Interior in excellent conditions

MACHINERY

No of engines	1
Make	Volvo Penta
Type	TMD31A
HP	94
kW	69.18



HALLBERG RASSY 45

Fuel	diesel
Year installed	1989
Year of overhaul	Injectors & glow plugs serviced 2022 + full service 2023
Maximum speed (kn)	8
Cruising speed (kn)	6
Consumption (l/hr)	4
Range (nm)	900
Engine hours	2500
Engine cooling system	freshwater heat exchanger
Drive	shaft
Shaft seal	Volvo
Engine controls	bowden cable
Gearbox	mechanical Volvo
Bowthruster	electric Sidepower 95T (24V)
Exhaust	watercooled
Propeller type	fixed
Propeller blades	3
Propeller shaft material	stainless steel
Shaft lubrication	water
Manual bilge pump	yes
Electric bilge pump	yes
Electrical installation	12V & 24V System
Start battery	1 x 12V / 77 Ah Varta Acid (2020)
Service battery	6 x 12V / 160 Ah Zenith AGM (09.2022)
Bowthruster battery	2 x 12V / 135 Ah Acid (2018)
Battery monitor	Victron BMV incl. Bluetooth (09.2022)
Battery charger	Mastervolt ChargeMaster PLUS 24/80-2 (09.2022)
Inverter	Mastervolt MASS SINE 24/2500
Solar panel	4 x 120 Watt (09.2022)
Diode battery combiners	2 x Victron SmartSolar MPPT 75 I 10 incl. Bluetooth (09.2022)
Shorepower	with cable 220V
Extra info	Mastervolt 110 Amp alternators 12V & 24V



Extra info	Mastervolt Alpha pro III Charge regulator (12.2022)
Extra info	12V (Startbattery) charge regulator: Mastervolt Alpha pro III

NAVIGATION

Compass	Navico Precision 9 (09.2022)
Electric compass	Venus C-Path magnetic pedestrial
Multi control display	2 x B&G Triton2 (09.2022)
Depth sounder/log	Aimar DST800 (2. gen.) (09.2022)
Forw. looking depth sounder	B&G ForwardScan (09.2022)
Windset	B&G WS310 (09.2022)
VHF	Icom M400BB (2018)
VHF handheld	yes
Autopilot	NAC-3 (02.2023) with B&G Triton2 controller (02.2023)
Rudder angle indicator	B&G
Radar	B&G HALO20+ (11.2022)
GPS	B&G ZG100 (11.2022)
Plotter/GPS	B&G Zeus 3S 9" Touchscreen (09.2022)
Electronis chart(s)	yes
AIS transceiver	Raymarine AIS 700 SOTDMA class B (01.2023)
EPIRB	GME MT603G (09.2022)
Navigation lights	LED
Extra info	NMEA200 network (11.2022)

EQUIPMENT

Fixed windscreen	yes
Sprayhood	New 11.2022
Bimini	New 11.2022
Cockpit cushions	yes
Cockpit table	Teak
Bathing platform	SS frame with cork surface (11.2022)
Boarding ladder	stainless steel



HALLBERG RASSY 45

Gangway	Aluminum
Deck shower	In cockpit (new 2023)
Anchor	Delta
Anchor chain	80 m
Windlass	electrical Lewmar V3 with 2 remote controls
Dinghy	rigid inflatable AB with alu floor
Outboard	yes
Outboard support	yes
Davits	stainless steel
Davits controls	manual
Deck crane	manual For outboard
Sea railing	wire
Grab rail (superstructure)	teak
Railing side opening gates	yes
Pushpit	yes
Pulpit	yes
Life raft	container SeaSafe Pro Light SOS technic
Life raft (pers)	8
Last life raft survey	02.2022
Lifejackets	Secumar Ultra 170 + Secumar Junior Duo Protect 110N
Safety harness	165 N
Lifebuoy	Jonboy Recovery Modul (09.2022)
Danbuoy	Ring with 40m rope (09.2022)
Safety lines on deck	yes
Rope cutter	Big & small
Horn	electric
Fenders	yes
Mooring lines	New 11.2022
TV	yes
Cockpit speakers	yes
Fire extinguisher	2 x Foam A+B 6L. + 2 x Foam A+B 2L. + blanket
Latest extinguisher survey	09.2022



Extinguisher in engine room	yes
Extra info	SART ACR Pathfinder-Pro SART (09.2022)

RIGGING

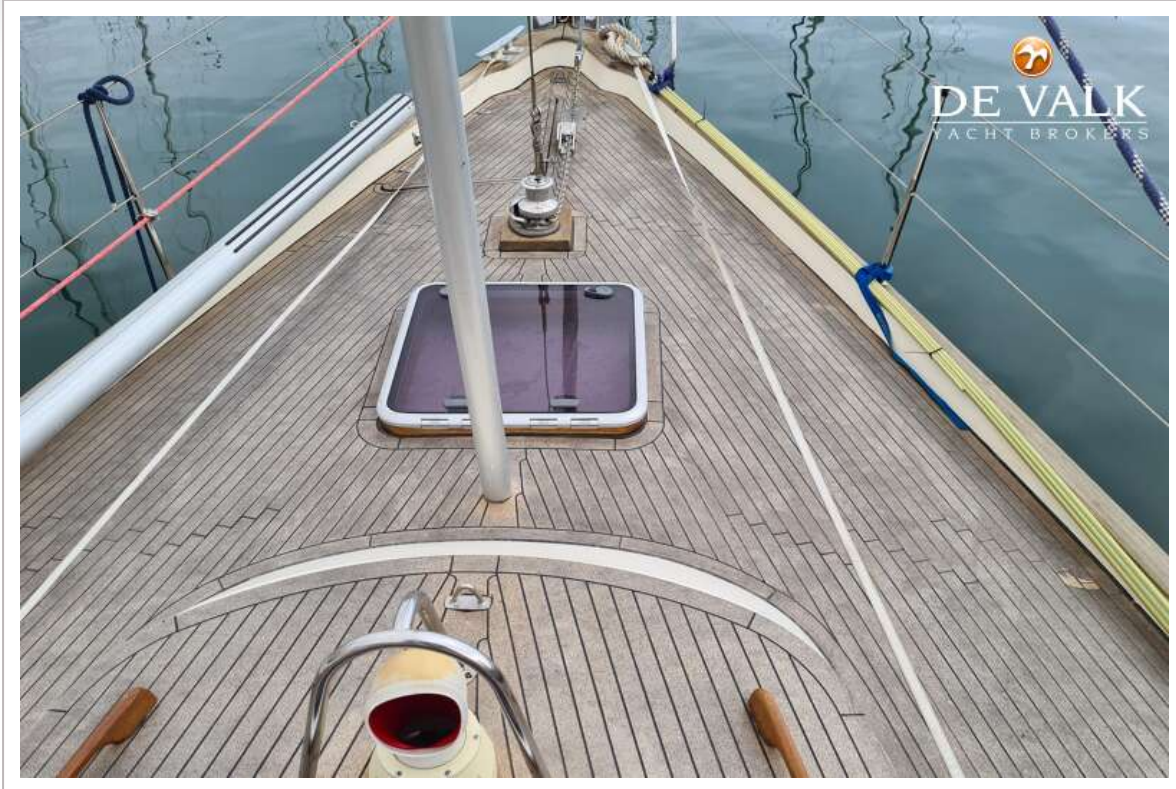
Rigging	sloop-cutter
Standing rigging	wire New 10.2022
Brand mast	Seldén With maststeps
Material mast	aluminium
Spreaders	2 sets
Mainsail cover	Lazybag (11.2022)
Battcars	Harken battsلاide system
Fully battened mainsail	1 x Dracon 52m ² (11.2022) + 1 x Mainsail 52m ² (serviced 10.2022)
Jib	Hank on stormjib (Doyle) 2011
Genoa	yes
Genoa II	Doyle (2018) + Kevlar leighweight UK DeVries (2017)
Cutter furler	Selden Furlex (2007)
Gennaker	UK DeVries (2008)
Removable innerforestay	New 2019
Reefing System	slabreefing 3 reefs
Backstay adjuster	hydraulic Navtec (serviced 2021)
Boomvang	mechanical and tackle
Primary sheet winch	2 x Lewmar ST 2 SP 65"
Secondary sheet winch	2 x Lewmar ST 2 SP 43"
Genoa sheetwinches	2 x Lewmar ST 2 SP 54"
Halyard winches	2 x Lewmar ST 43"
Reefing winch	1 x Lewmar ST 43"
Spi-pole	1 x Selden
Extra info	Running rigging replaced 10.2022
Extra info	Cutter stay new 10.2022



HALBERG RASSY 45



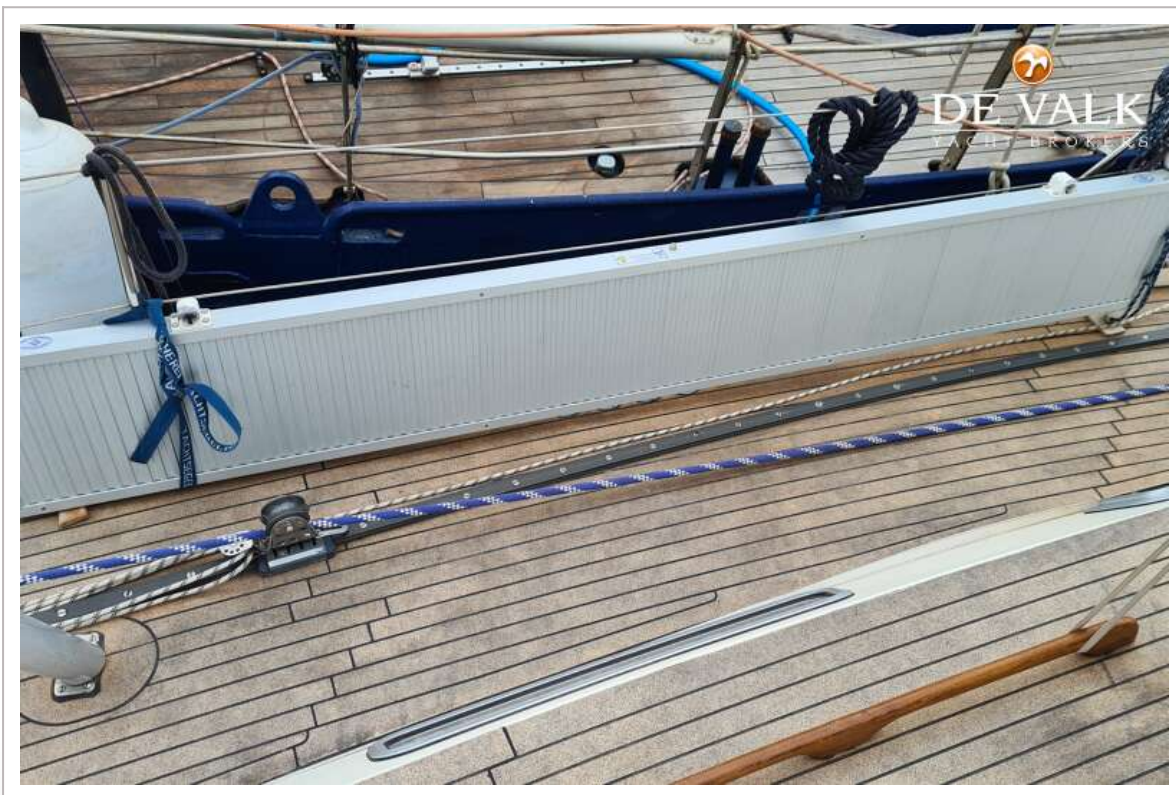
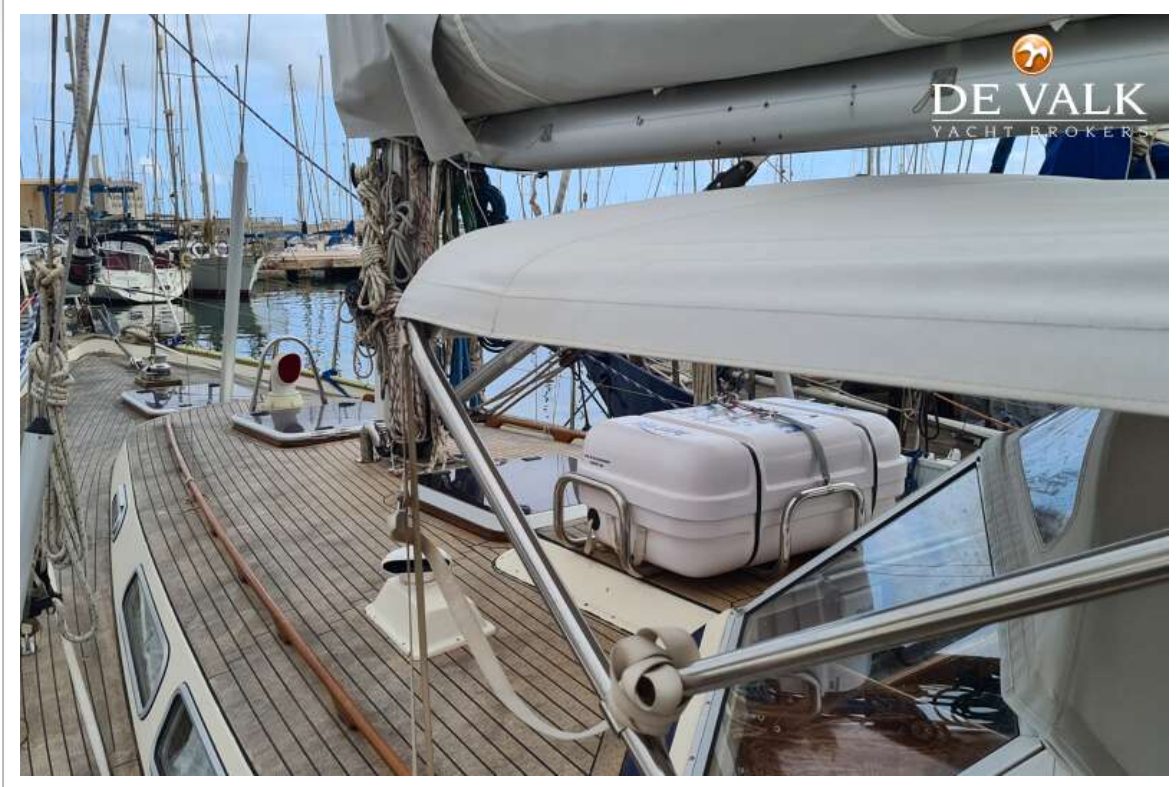
HALLBERG RASSY 45



HALLBERG RASSY 45



HALLBERG RASSY 45



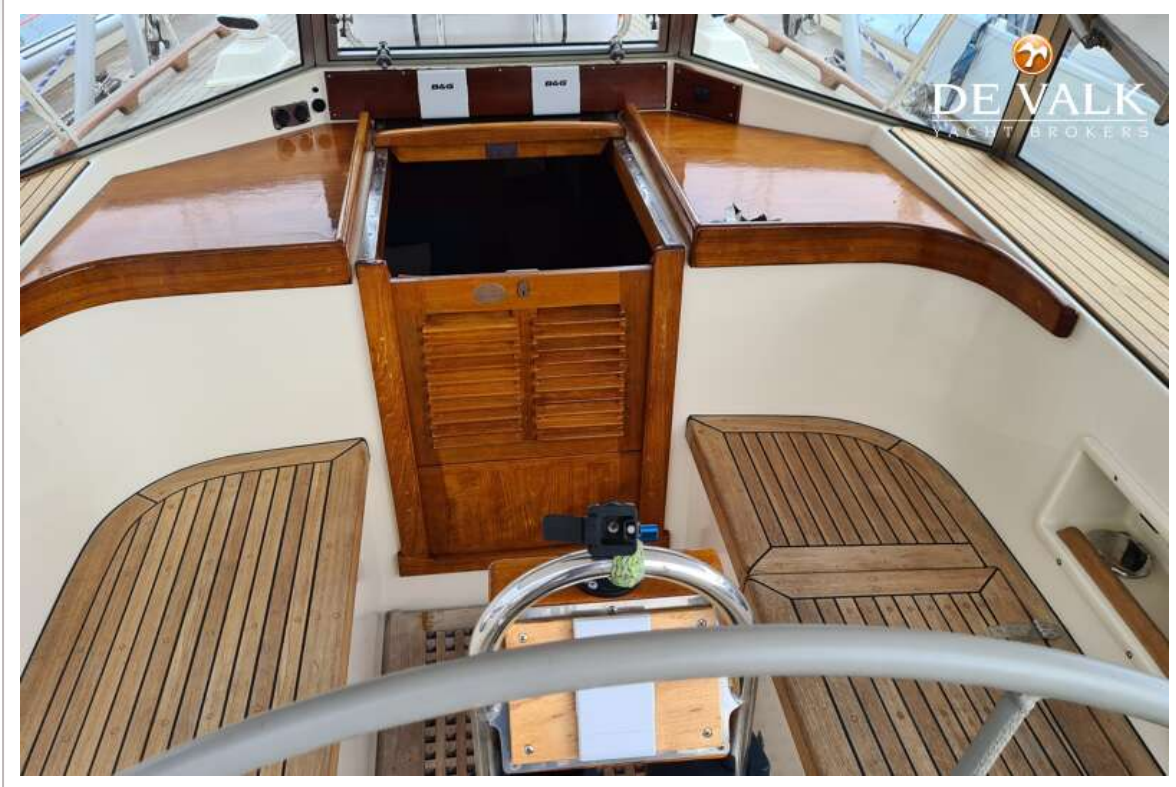
HALLBERG RASSY 45



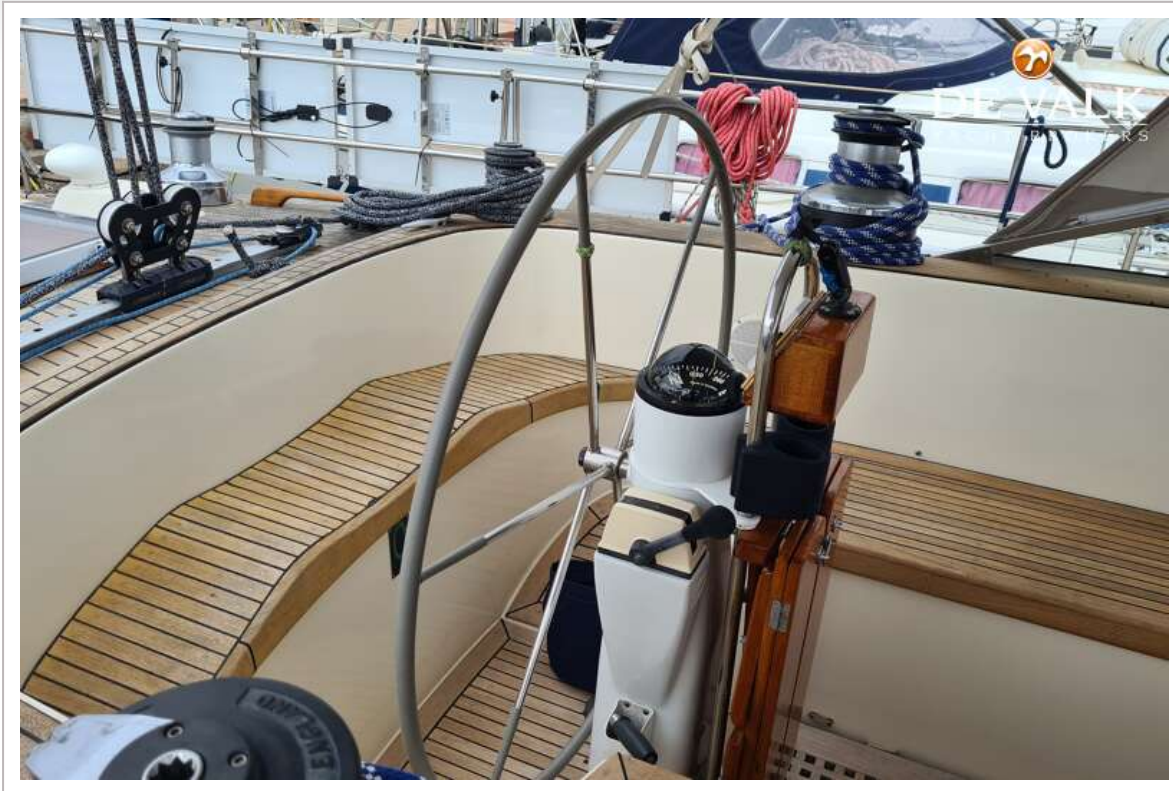
HALLBERG RASSY 45



HALLBERG RASSY 45



HALLBERG RASSY 45



HALLBERG RASSY 45



HALLBERG RASSY 45



HALLBERG RASSY 45



HALLBERG RASSY 45



HALLBERG RASSY 45



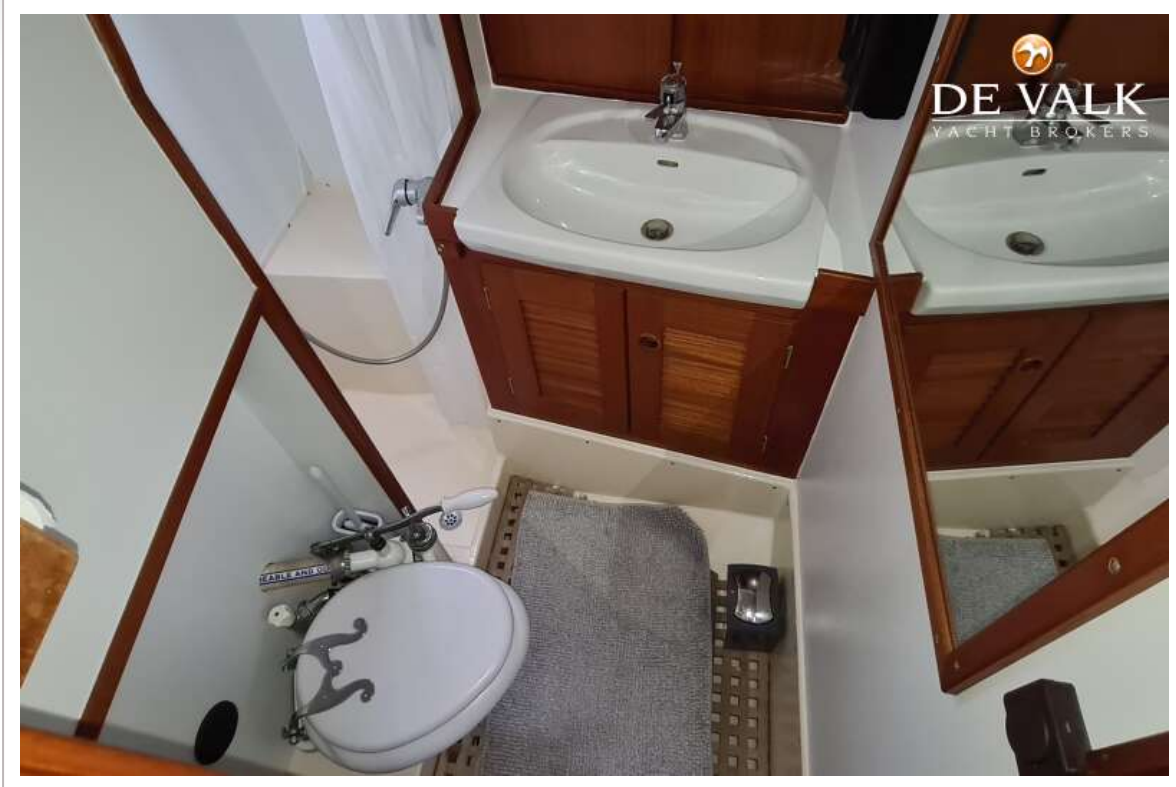
HALLBERG RASSY 45



HALLBERG RASSY 45



HALLBERG RASSY 45



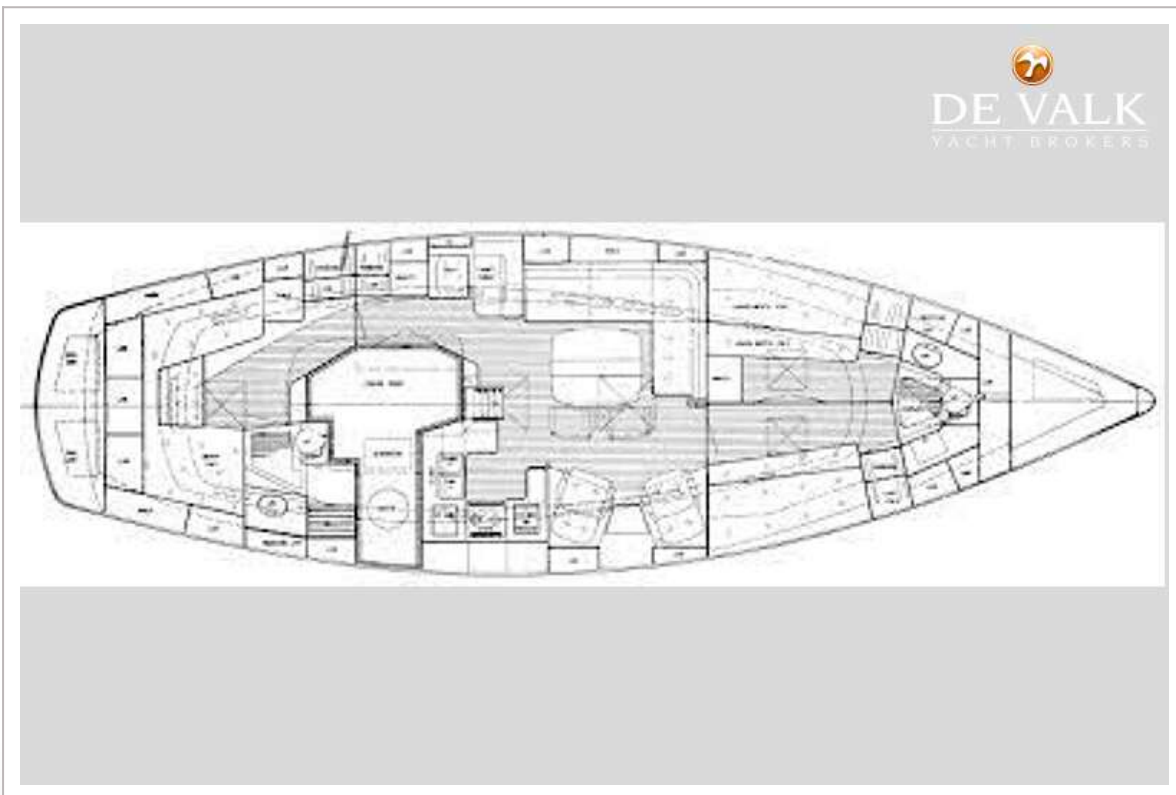
HALLBERG RASSY 45



HALLBERG RASSY 45



HALLBERG RASSY 45



HALLBERG RASSY 45

