



WALLY 94



DE VALK
YACHT BROKERS

BROKER'S COMMENTS

INTI CUBE is a 28.55 m Sail Yacht, built in Italy by Wally and delivered in 2005. She is one of 4 94 models. She can accommodate up to 8 guests in 4 staterooms, with 4 crew members waiting on their every need. She was designed by Luca Bassani Design, The naval architecture was developed by German Frers. She is built with a Carbon Fibre and Teak deck, a Carbon Fibre hull, and Carbon Fibre superstructure.

Valerio Biondi

SPECIFICATIONS

Dimensions	28.54 x 6.40 x 4.20 (m)	Builder	WALLY
Built	2005	Cabins	3
Material	Carbon Fibre	Berths	6
Engine(s)	1 x Cummins diesel	Hp/Kw	250.00 (hp), 184.00 (kw)
Asking price	€ 1.900.000 (VAT Paid)	Lying	

CONTACT

Sales office	De Valk Antibes	Telephone	+33 492 91 0202
Address	2, Avenue de Verdun 06600 Antibes France	E-mail	antibes@devalk.nl

DISCLAIMER

These particulars are given in good faith as supplied but cannot be guaranteed.



GENERAL

Model	WALLY 94
Type	sailing yacht
LOA (m)	28,54
LWL (m)	26,68
Beam (m)	6,40
Draft (m)	4,20
Year built	2005
Builder	WALLY
Designer	Luca Bassani Design
Displacement (t)	45
Gross tonnage	62 tons
Net tonnage	18 tons
Hull material	carbon fibre
Hull colour	Metallic
Keel type	bulb keel
Superstructure material	carbon fibre
Deck material	carbon fibre
Deck finish	teak
Fuel tank (litre)	1800 lt
Freshwater tank (litre)	1200 lt
Blackwater tank (litre)	150 lt
Greywater tank (litre)	150 lt

ACCOMMODATION

Cabins	3
Berths	6
Crew cabin	2
Crew berths	4
Air-conditioning	Condaria (new 2012)
Galley	yes



Cooker	Techimpex (2016)
Oven	Techimpex (2016)
Microwave	Siemens
Fridge	Frigomar drinks fridge
Freezer	Frigomar fridge-freezer [3 x units in the galley]
Hot water system	200 lt Gianneschi
Dishwasher	Bosh (2017)
Hot water tap	yes
Owners cabin	French bed Two
Bed length (m)	Queen size
Bathroom	en suite
Toilet	en suite Tecma Silence
Toilet system	electric
Wash basin	in the bathroom
Shower	en suite
Extra info	Including an office
Guest cabin 1	double bed Two
Bathroom	en suite
Toilet	en suite Tecma Silence
Toilet system	electric
Wash basin	in the bathroom
Shower	en suite
Guest cabin 2	twin single Pullman
Bathroom	en suite
Toilet	en suite Tecma Silence
Toilet system	electric
Wash basin	in the bathroom
Shower	en suite
Washing machine	Samsung (2016)

MACHINERY



No of engines	1
Make	Cummins
HP	250
kW	184
Fuel	diesel
Year installed	2017
Maximum speed (kn)	12
Cruising speed (kn)	10
Consumption (l/hr)	20
Range (nm)	900
Engine hours	3000
Bowthruster	Maxpower
Propeller type	Gori
Propeller blades	3
Shaft lubrication	oilbath 20 lit
Generator	Cummins Onan 22.5kw
Running hours generator	3000 (new 2017)
Batteries	200/Ah x 24 V
Inverter	2x 1500 w
Watermaker	Tecnicomar 200lt/h

NAVIGATION

Compass	Sunto magnetic compass and B&G Gyro compass
Multi control display	B&G Hercules 3000: 7 x FFD
Depth sounder	B&G
Log	B&G
Windset	B&G
VHF	2x fixed Sailor / Raython
Autopilot	B&G
Radar	Raython
GPS	2 x Laica + Raython



Plotter	3 x Raymarine hybrid touch Chartplotter
Electronic chart(s)	Raytheon
AIS receiver	Raymarine AIS 50
EPIRB	Mc Murdo

EQUIPMENT

Bimini	Bimini top: Sumbrella black (titanium structure)
Bow ladder	yes
Gangway	yes
Anchor	Anchors & chain: Sanguinetti custom
Anchor chain	yes
Windlass	hydraulic Lewmar
Dinghy	3.6M Zodiac Tender complete
Outboard	15 Yamaha Outboard (2016)
Life raft	3x Zodiac 6 pax
Life raft (pers)	6
Lifejackets	12
TV	Sony 32'
Surround Sound System	SONOS (2016)

RIGGING

Rigging	Rig: CarboLink Composite
Brand mast	Masts: Southern Spars
Material mast	Composite
Spreaders	Masts: Southern Spars Composite
Mainsail	Forte4 OneSails (2016)
Genoa	Forte4 OneSails (2016)
Genoa I	North Forte4 Sails (2015)
Gennaker	OneSails furling (2016)
Trysail	yes
Stormjib	yes



Primary sheet winch

4x Lewmar 111



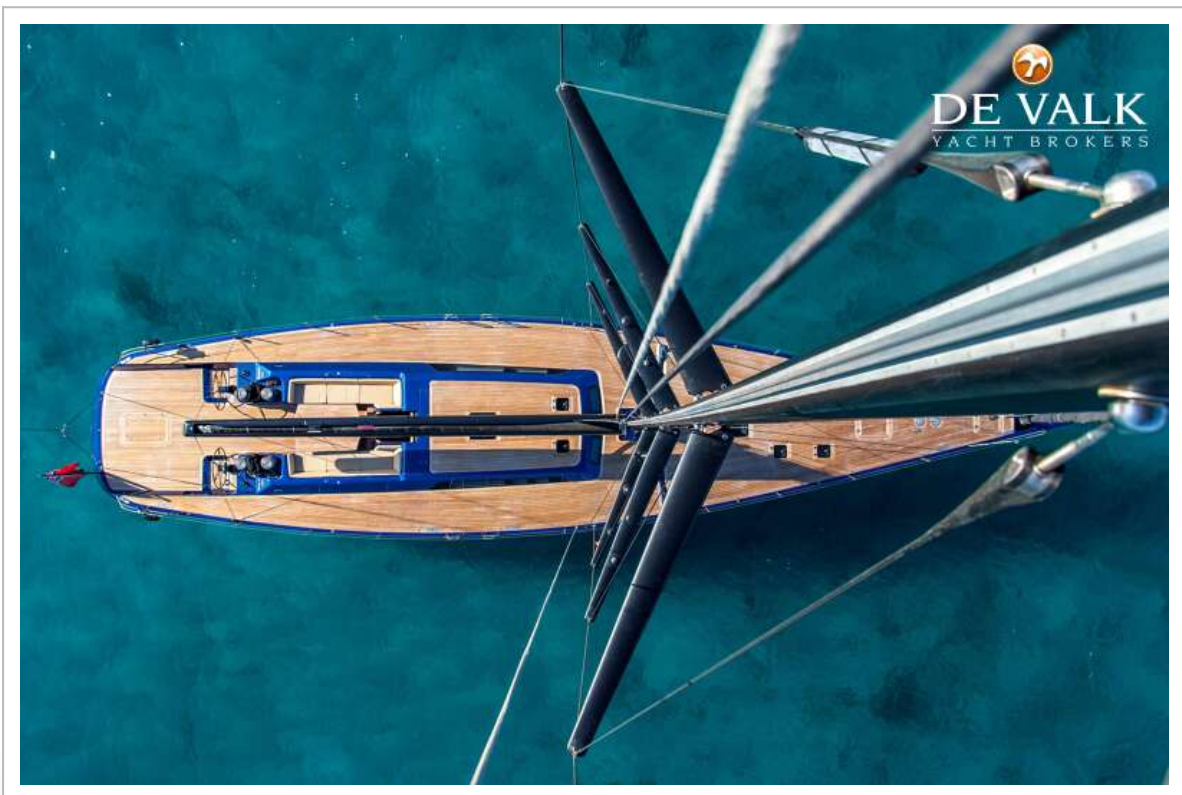
WALLY 94



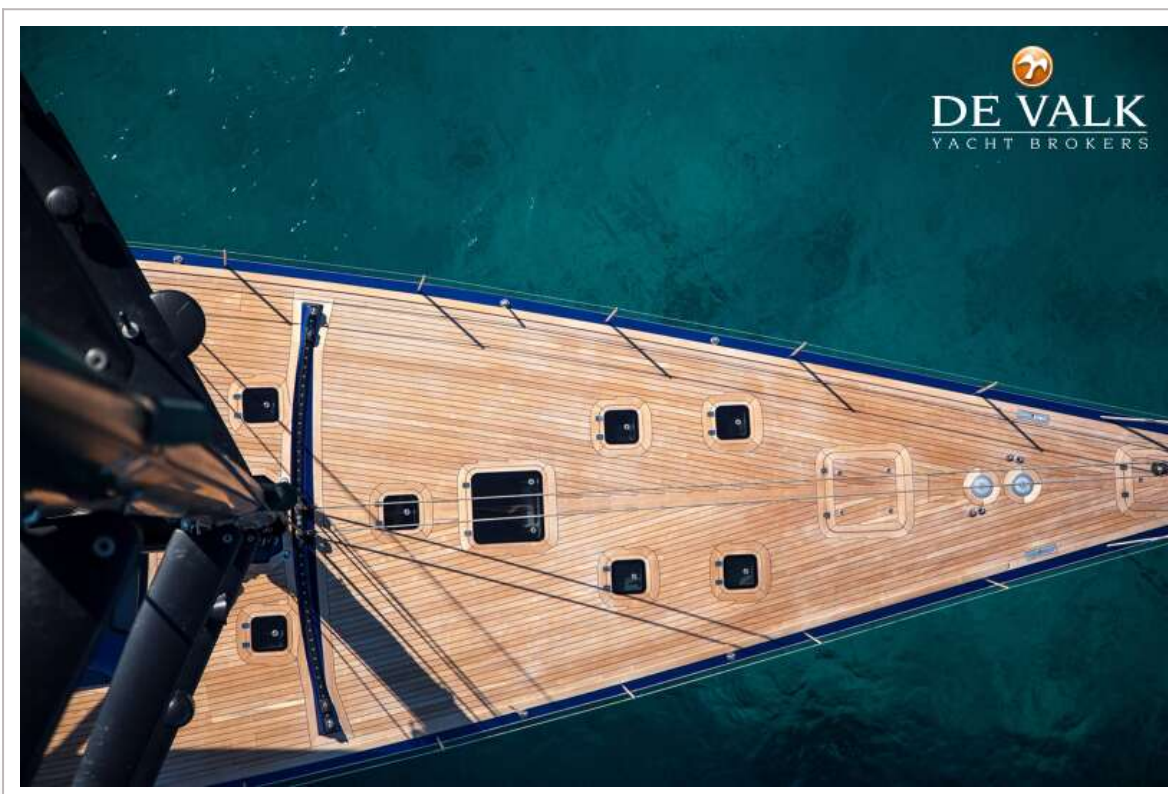
WALLY 94



WALLY 94



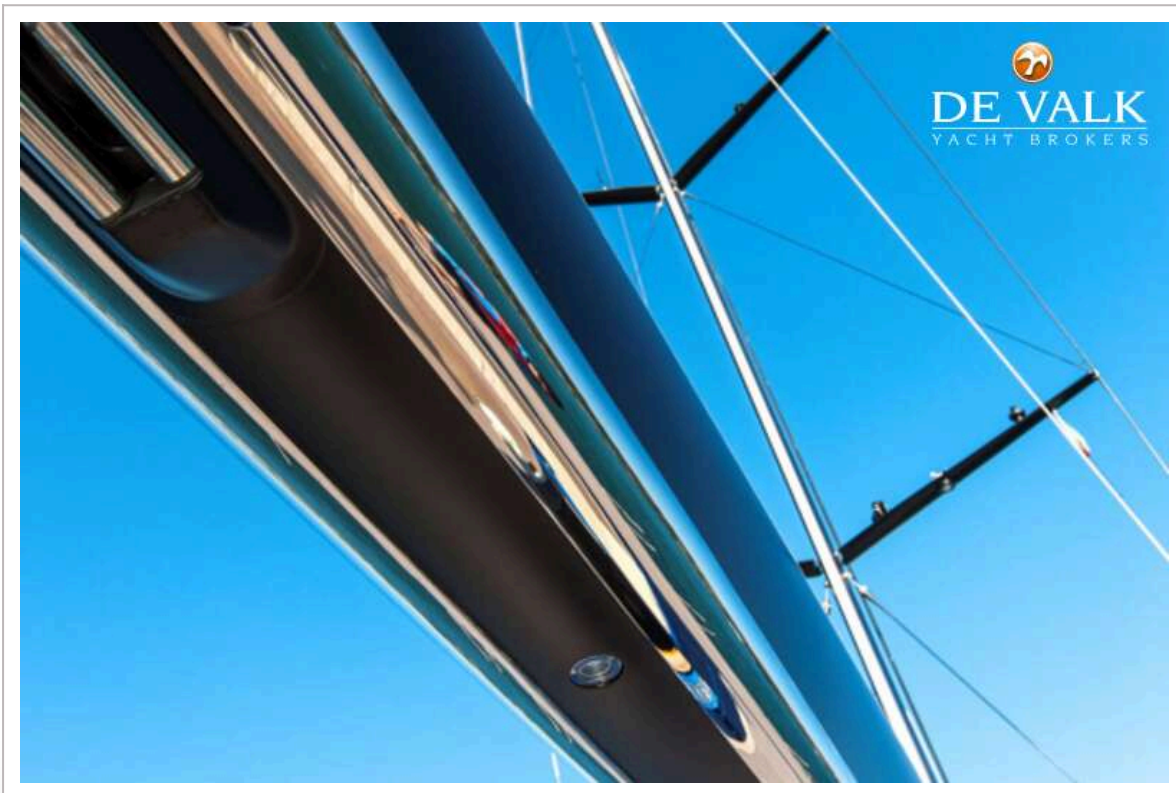
WALLY 94



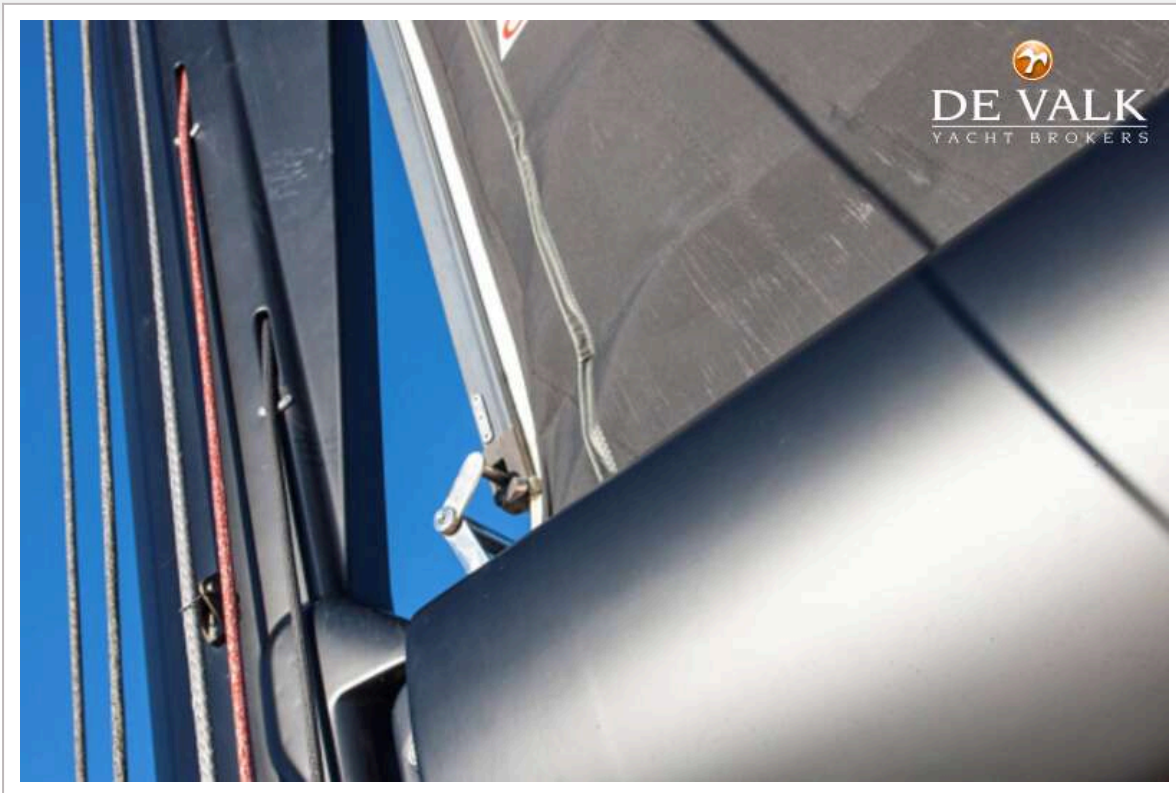
WALLY 94



WALLY 94



WALLY 94



WALLY 94



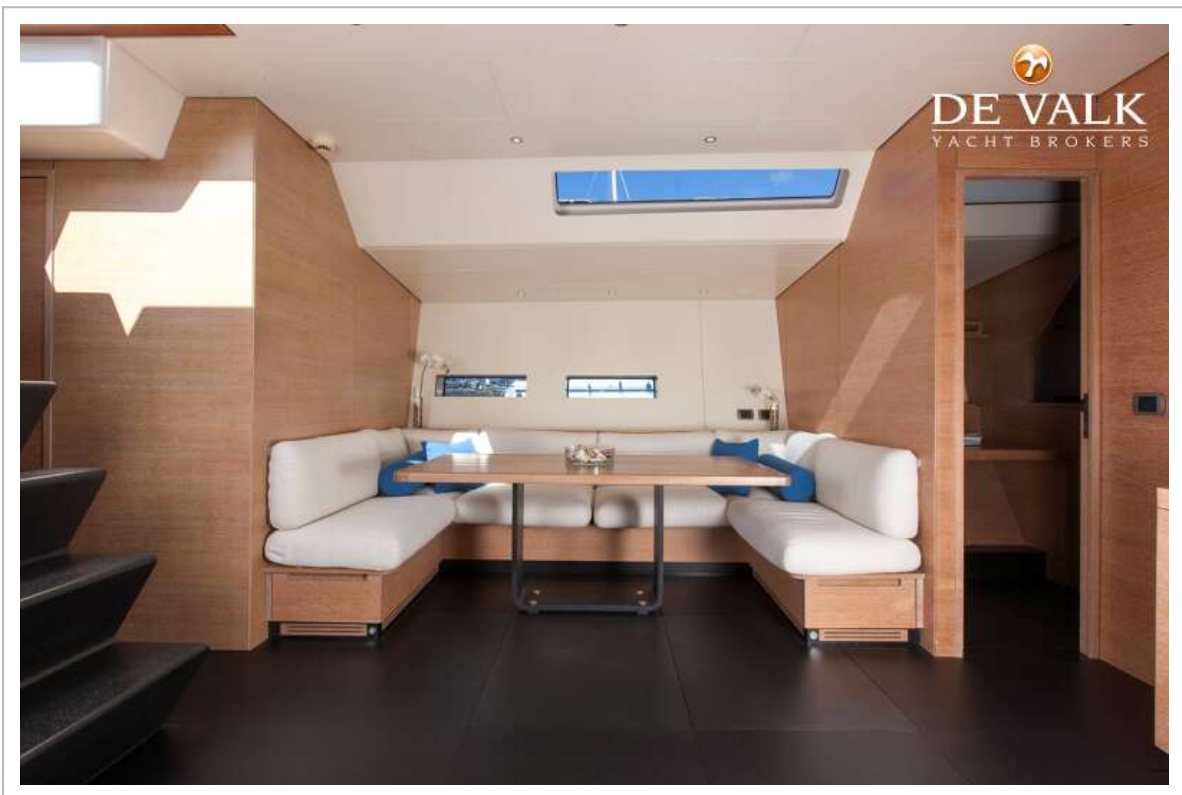
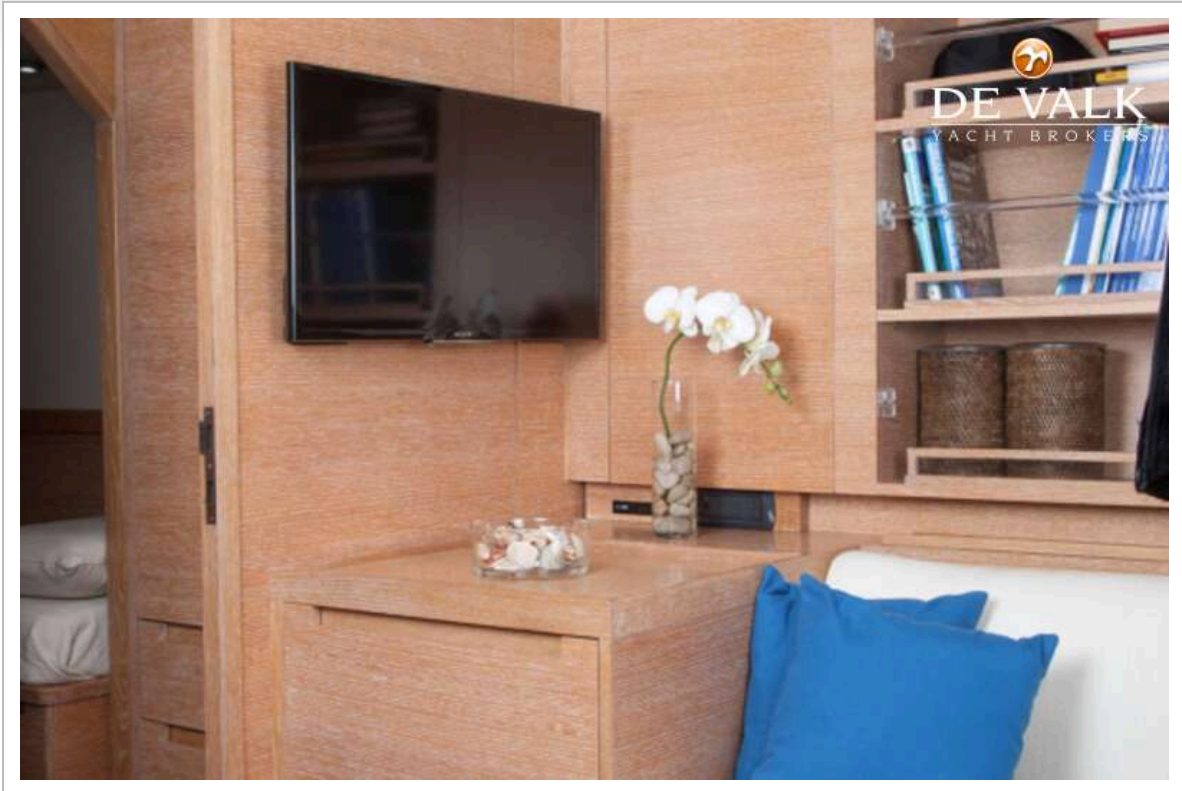
WALLY 94



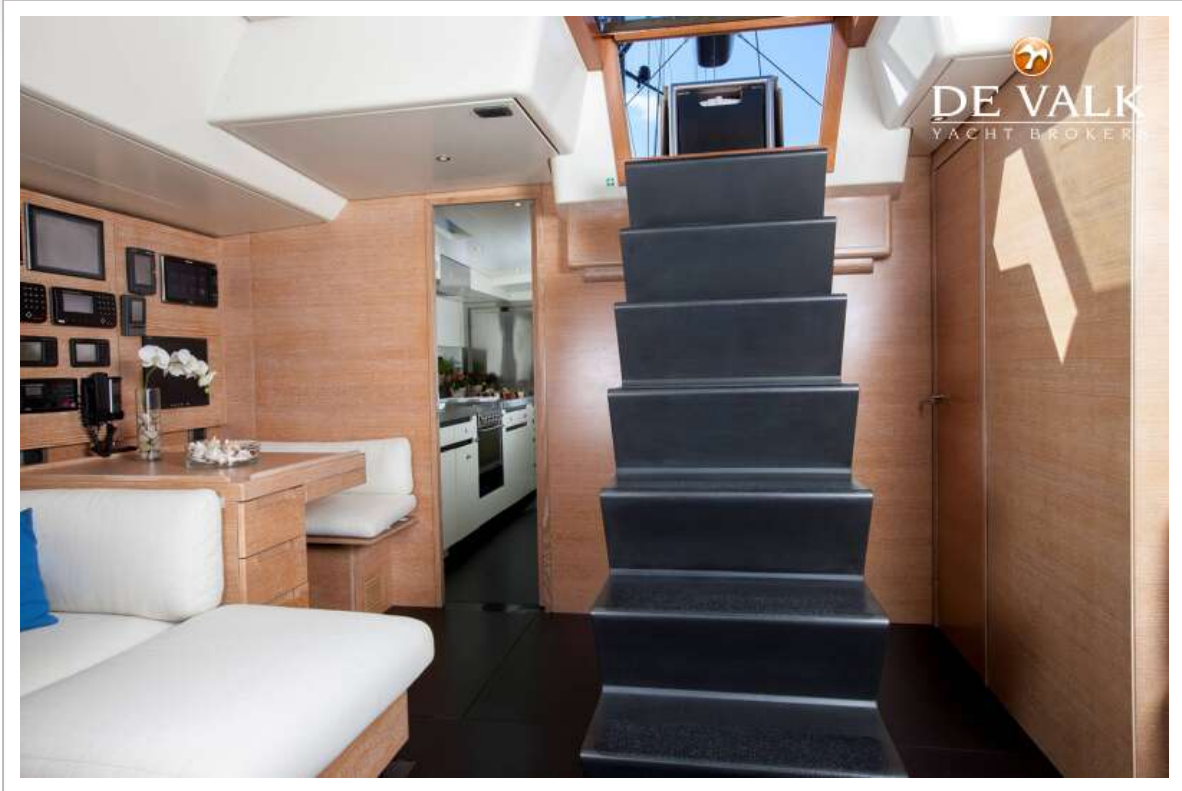
WALLY 94

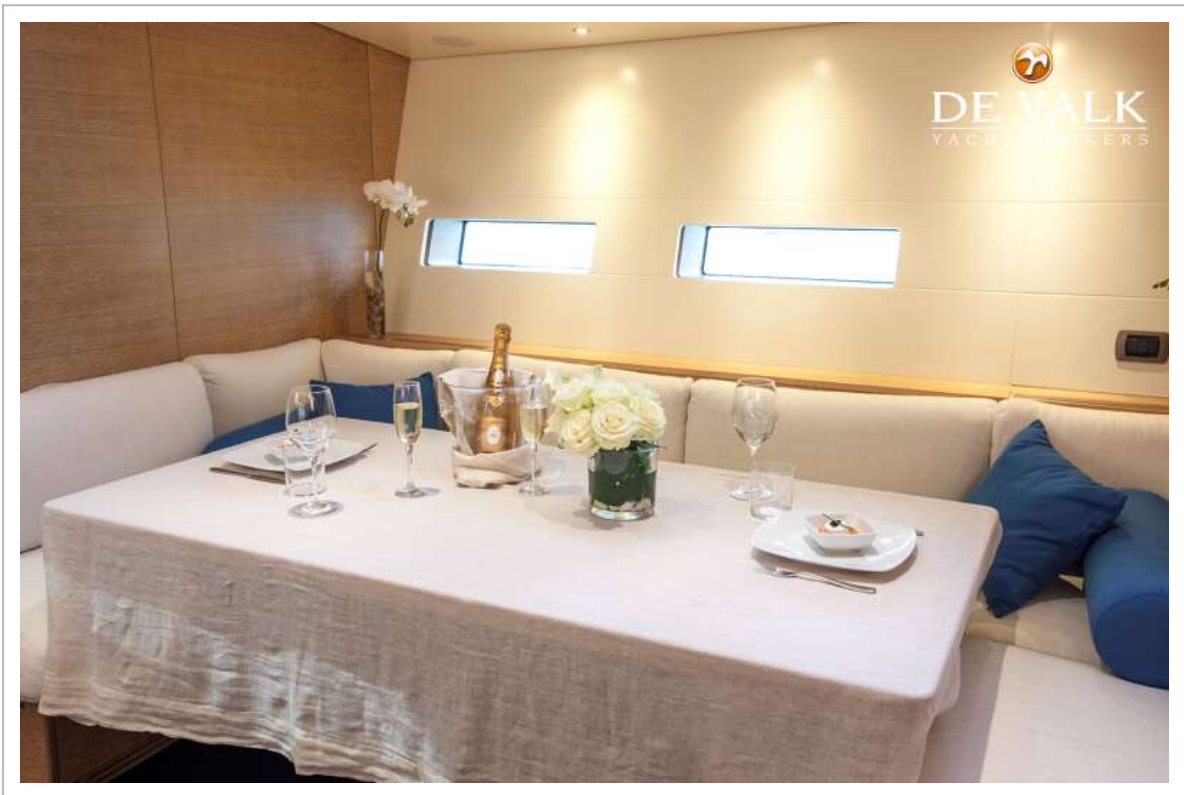


WALLY 94

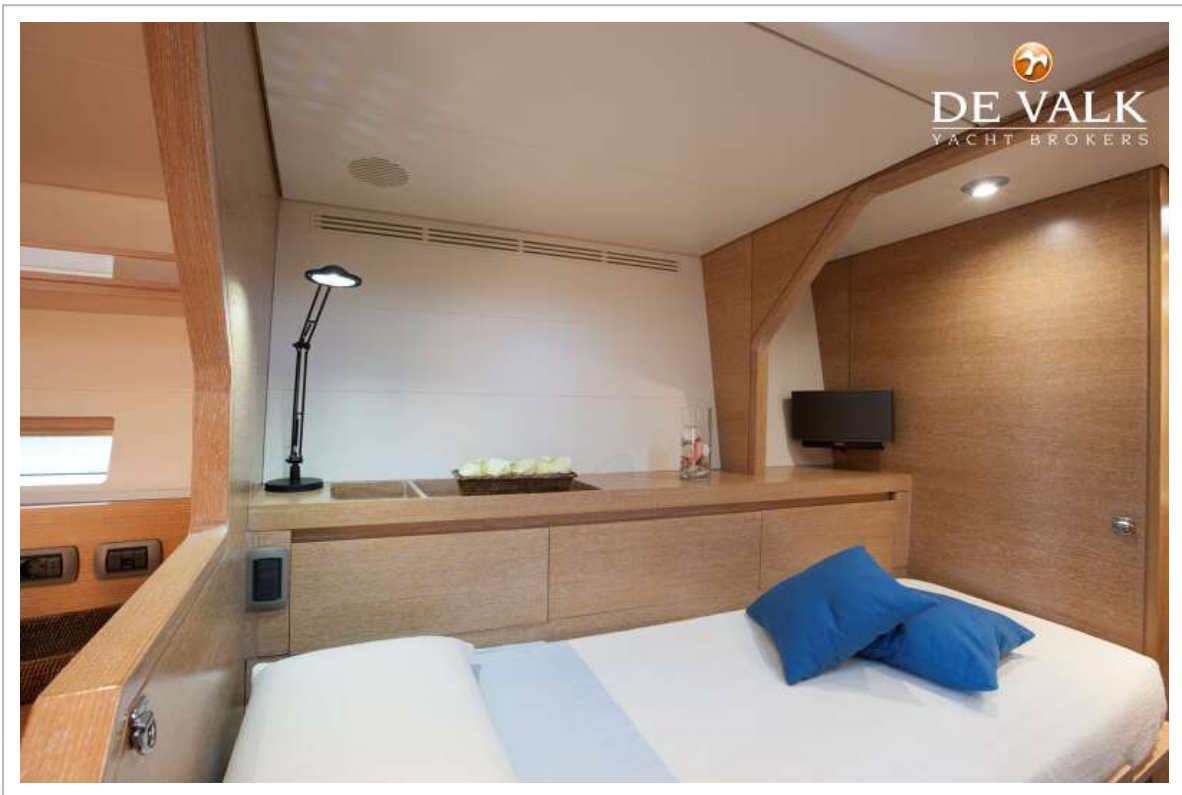


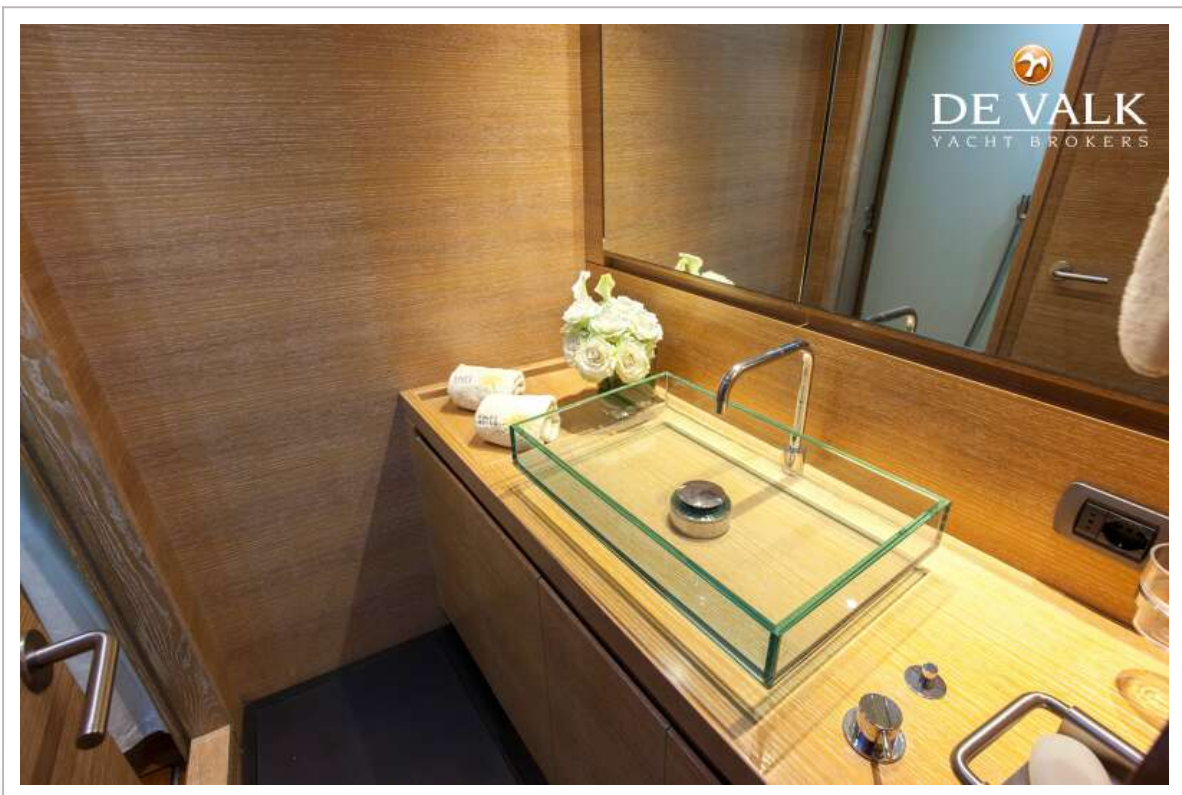
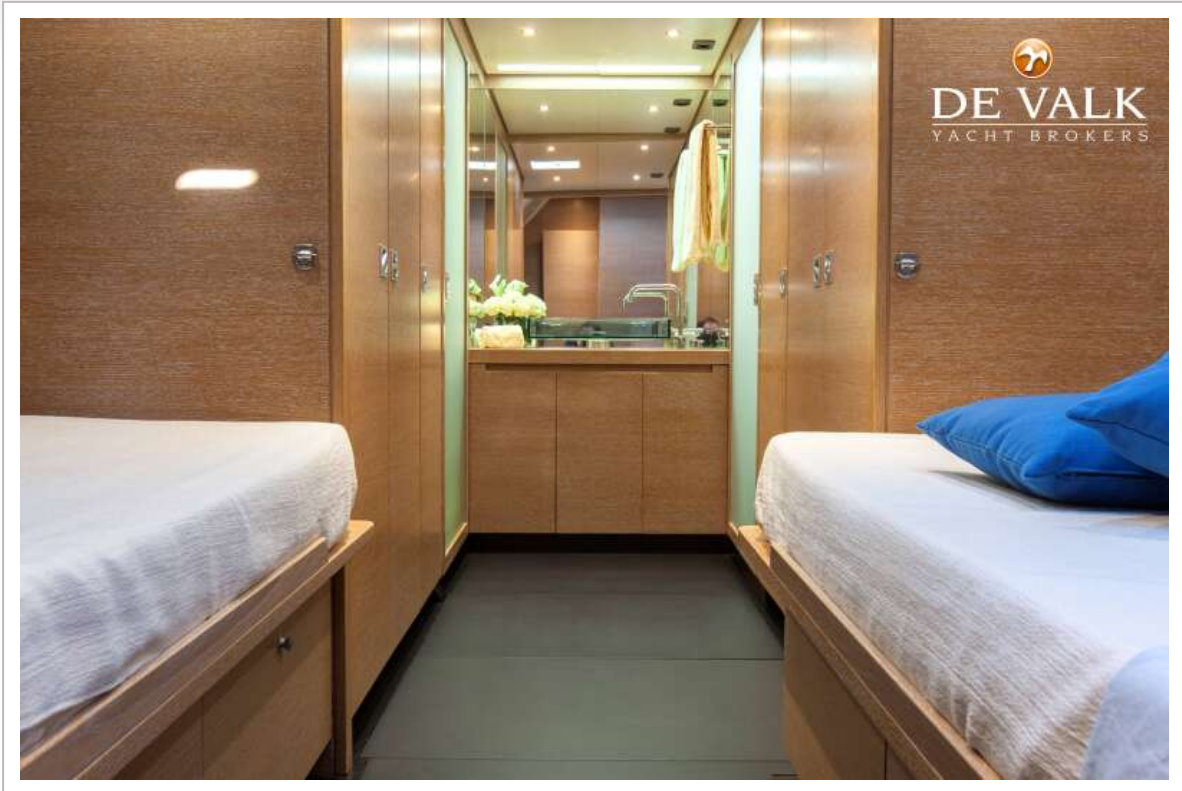
WALLY 94

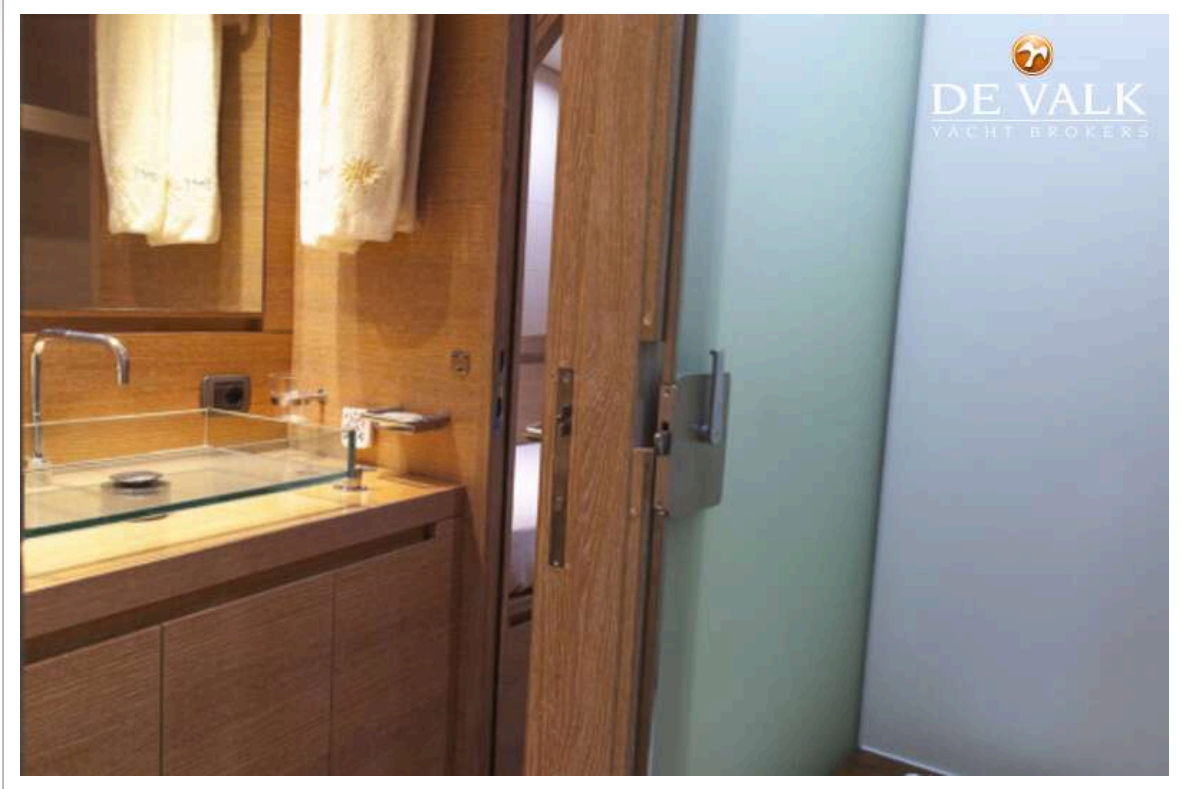




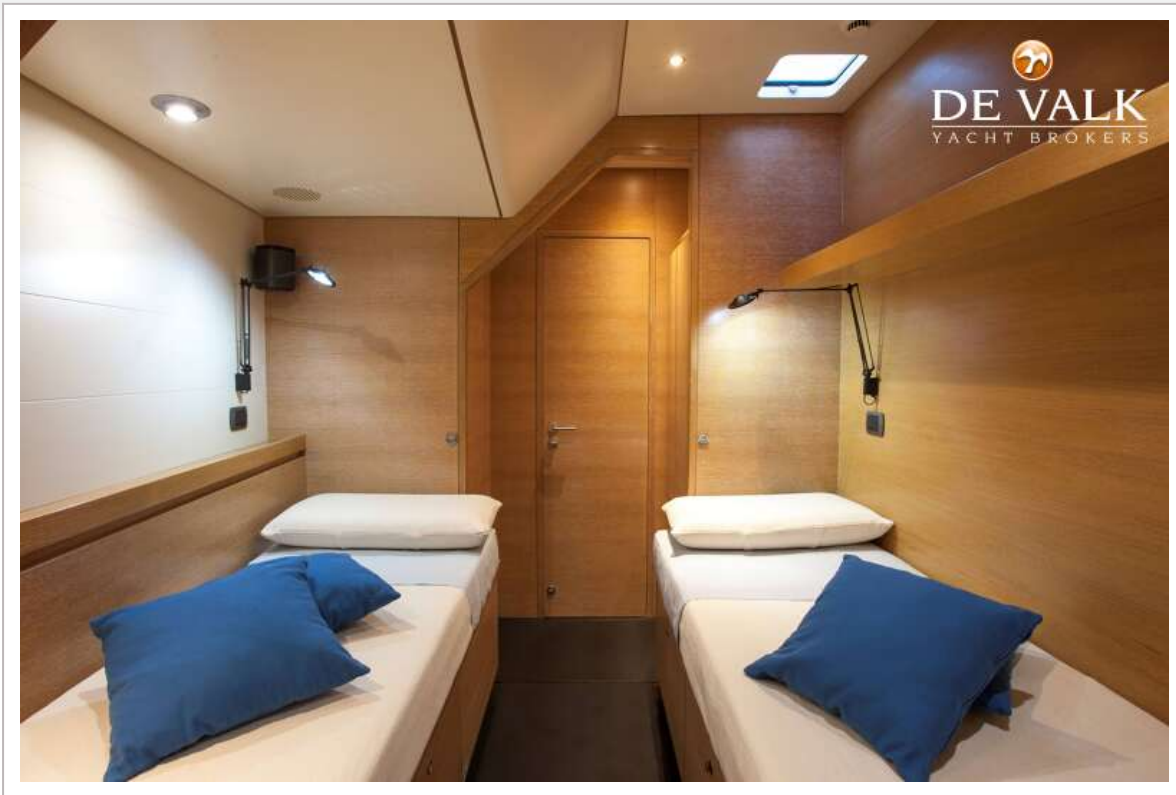
WALLY 94

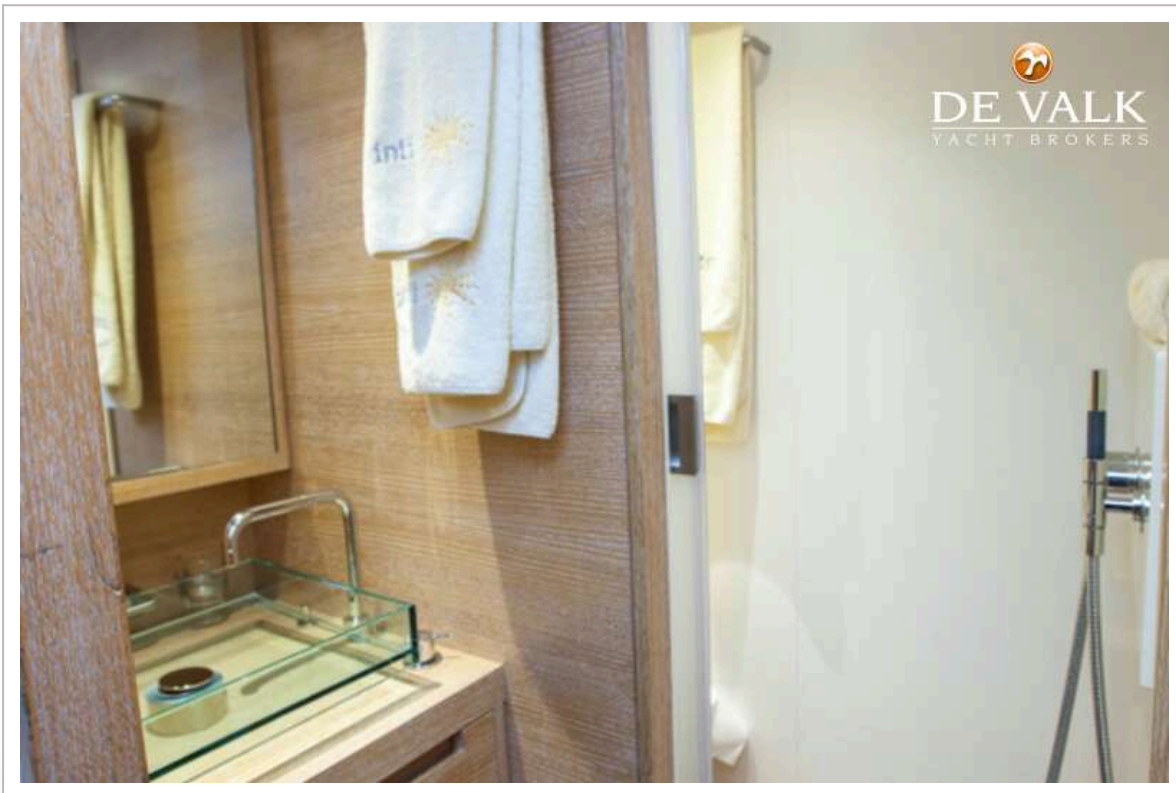






WALLY 94





WALLY 94

