



DE VALK
YACHT BROKERS



FEADSHIP AKERBOOM



DE VALK
YACHT BROKERS

FEADSHIP AKERBOOM

BROKER'S COMMENTS

The Feadship Akerboom is part of the Heritage Fleet of Feadship and is a classic yacht built in 1955. The Feadship hull is recently repainted and equipped with new antifouling (2023). She is available for visits 7 days a week in our covered sales marina in Loosdrecht.

Mark Hesselmans

SPECIFICATIONS

Dimensions	9.30 x 2.90 x 0.85 (m)	Builder	Akerboom Lisse
Built	1955	Cabins	1
Material	Steel	Berths	4
Engine(s)	1 x Peugeot Idenor diesel	Hp/Kw	50.00 (hp), 36.80 (kw)
Asking price	€ 49.500 (VAT Paid)	Lying	at sales office

CONTACT

Sales office	De Valk Loosdrecht	Telephone	+31 35 582 90 30
Address	't Breukeleveense Meentje 6 1231 LM Loosdrecht / Wijdmeren The Netherlands	E-mail	loosdrecht@devalk.nl

DISCLAIMER

These particulars are given in good faith as supplied but cannot be guaranteed.



FEADSHIP AKERBOOM

GENERAL

Model	FEADSHIP AKERBOOM
Type	motor yacht
LOA (m)	9,30
Beam (m)	2,90
Draft (m)	0,85
Year built	1955
Builder	Akerboom Lisse
Country	The Netherlands
Hull material	steel
Hull colour	white
Superstructure material	wood
Deck material	steel
Deck finish	non-skid paint
Superstructure deck finish	paint
Antifouling (year)	2022
Window frame	stainless steel
Window material	glass
Deckhatch	yes
Portholes	yes
Mast can be lowered	manual
Fuel tank (litre)	steel 150+/-
Level indicator (fuel tank)	yes
Freshwater tank (litre)	steel 2x 200 +/-
Level indicator (freshwater)	yes
Blackwater tank (litre)	polyethylene 85 +/-
Level indicator (blackwater)	yes
Wheel steering	chain steering
More info on paintwork	Hull repainted 2023

ACCOMMODATION



FEADSHIP AKERBOOM

Cabins	1
Berths	4
Interior	teak
Open cockpit	yes
Saloon	yes
Headroom saloon (m)	1,80+/-
Dinette to convert into berth	yes
Opening door to cockpit	yes
Galley	yes
Countertop	wood
Sink	stainless steel
Cooker	calor gas 4x burners
Extractor	yes
Fridge	Coolmatic
Hot water system	yes
Water pressure system	electrical
Owners cabin	v-bed
Wardrobe	hanging and shelves
Bathroom	shared
Toilet	shared
Toilet system	electric
Shower	shared

MACHINERY

No of engines	1
Make	Peugeot Idenor
HP	50
kW	36.80
Fuel	diesel
Maximum speed (kn)	7
Cruising speed (kn)	5



FEADSHIP AKERBOOM

Engine hours	1645
Engine cooling system	freshwater heat exchanger
Drive	shaft
Engine controls	bowden cable
Gearbox	hydraulic
Bowthruster	electric
Exhaust	watercooled
Propeller type	fixed
Propeller shaft material	stainless steel
Electric bilge pump	yes
Start battery	1x 145Ah 2023
Service battery	2x 105Ah 2023
Battery charger	12V 20AMPS
Inverter	Unitek G12-150 (1200 Watt)
Shorepower	with cable
Extra info	Heatexchanger replaced 2023 and engine service

NAVIGATION

Rudder angle indicator	Wema
Navigation lights	yes

EQUIPMENT

Cockpit cover	yes
Cockpit chairs	yes
Bathing platform	yes
Boarding ladder	yes
Deck shower	Hot and cold
Sea railing	stainless steel
Grab rail (superstructure)	teak
Rope cutter	2023
Wiper	yes

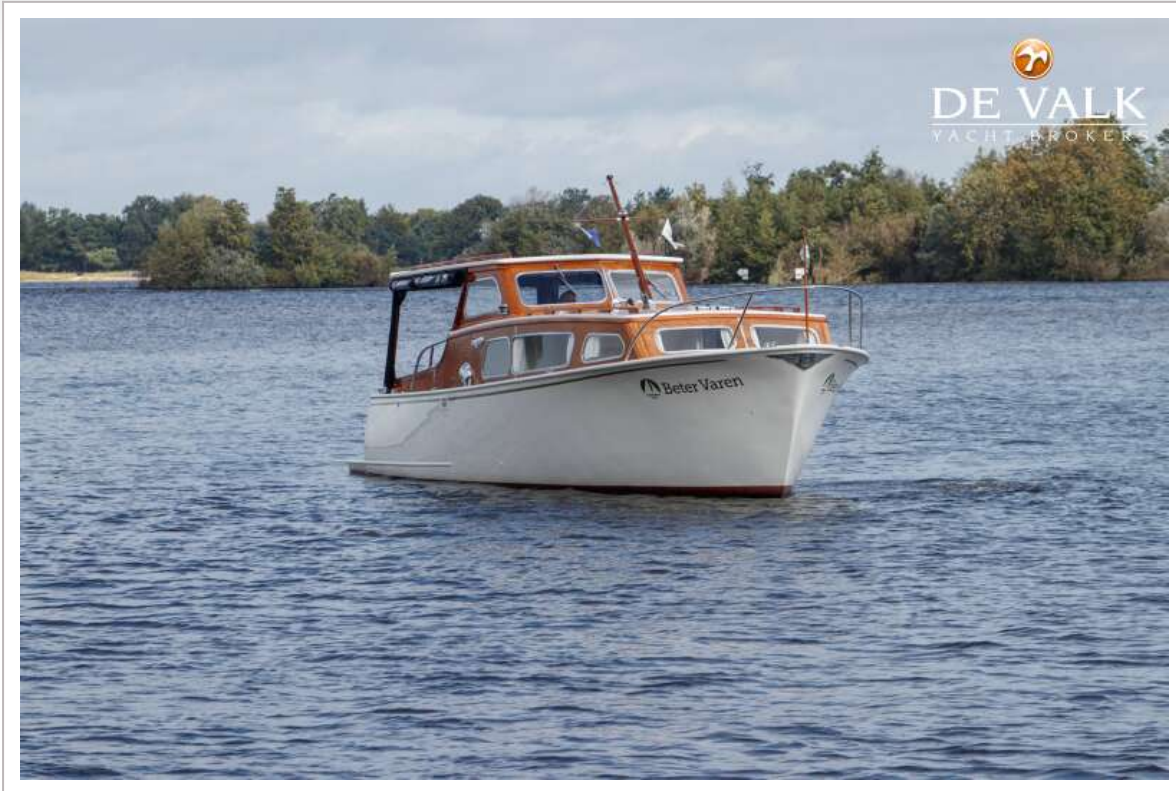


Horn	yes
Fenders	yes
Mooring lines	yes

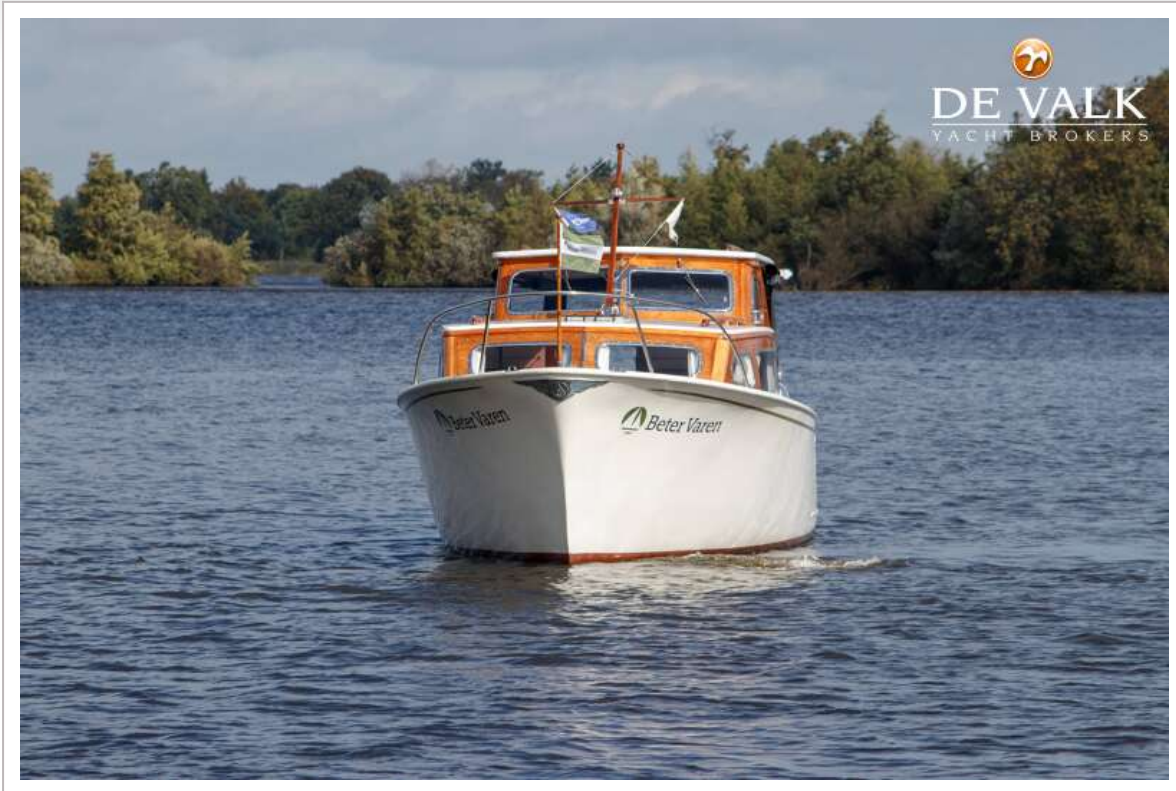


FEADSHIP AKERBOOM





FEADSHIP AKERBOOM





FEADSHIP AKERBOOM



FEADSHIP AKERBOOM



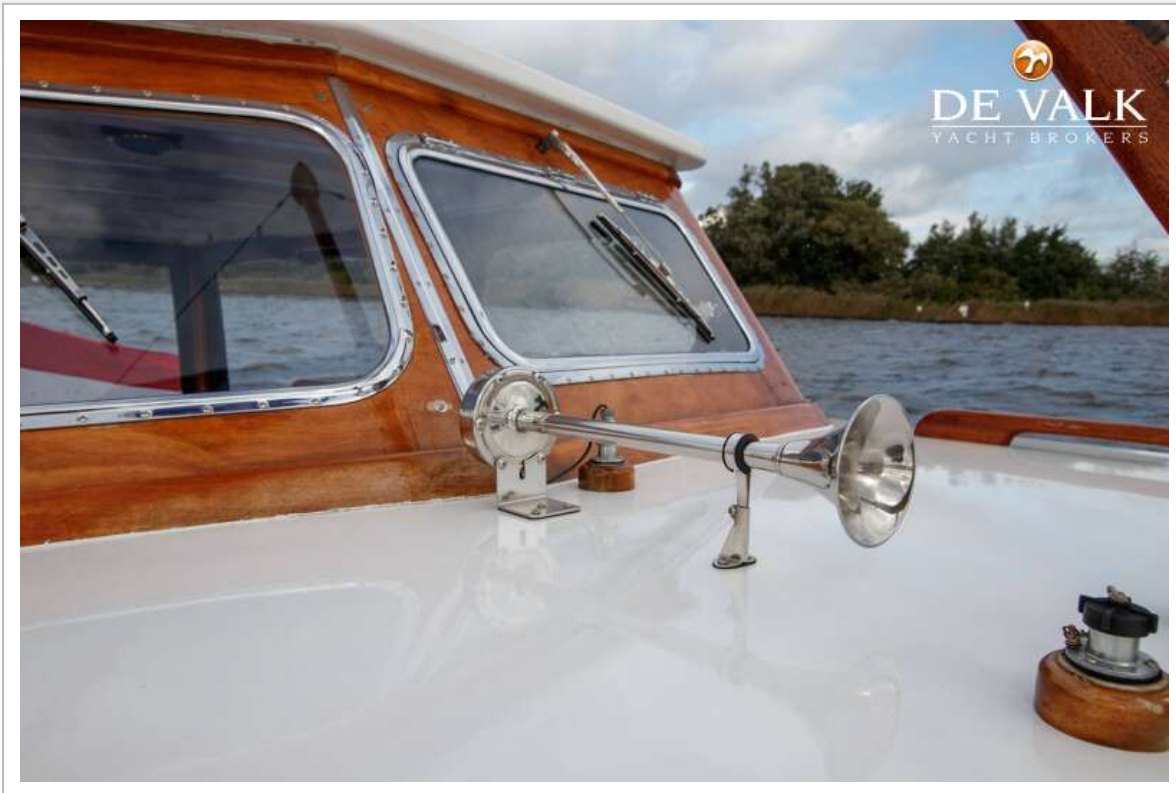
FEADSHIP AKERBOOM



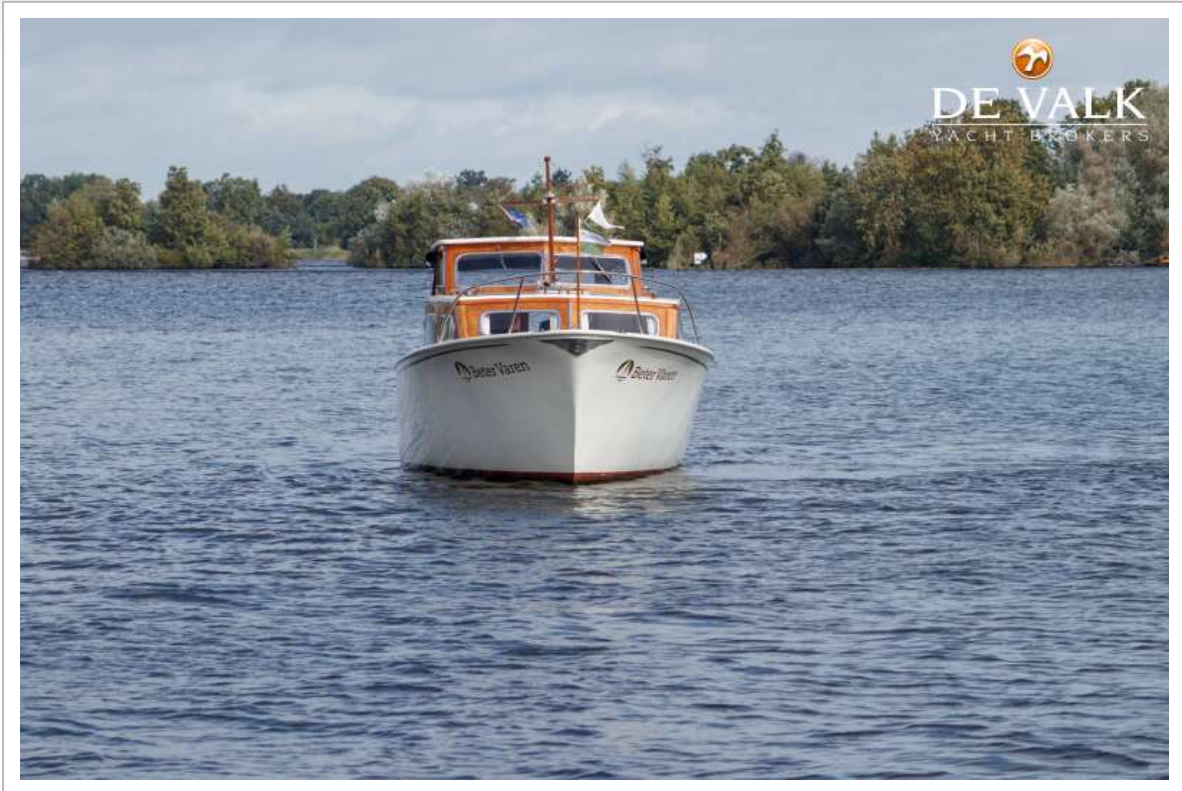
FEADSHIP AKERBOOM



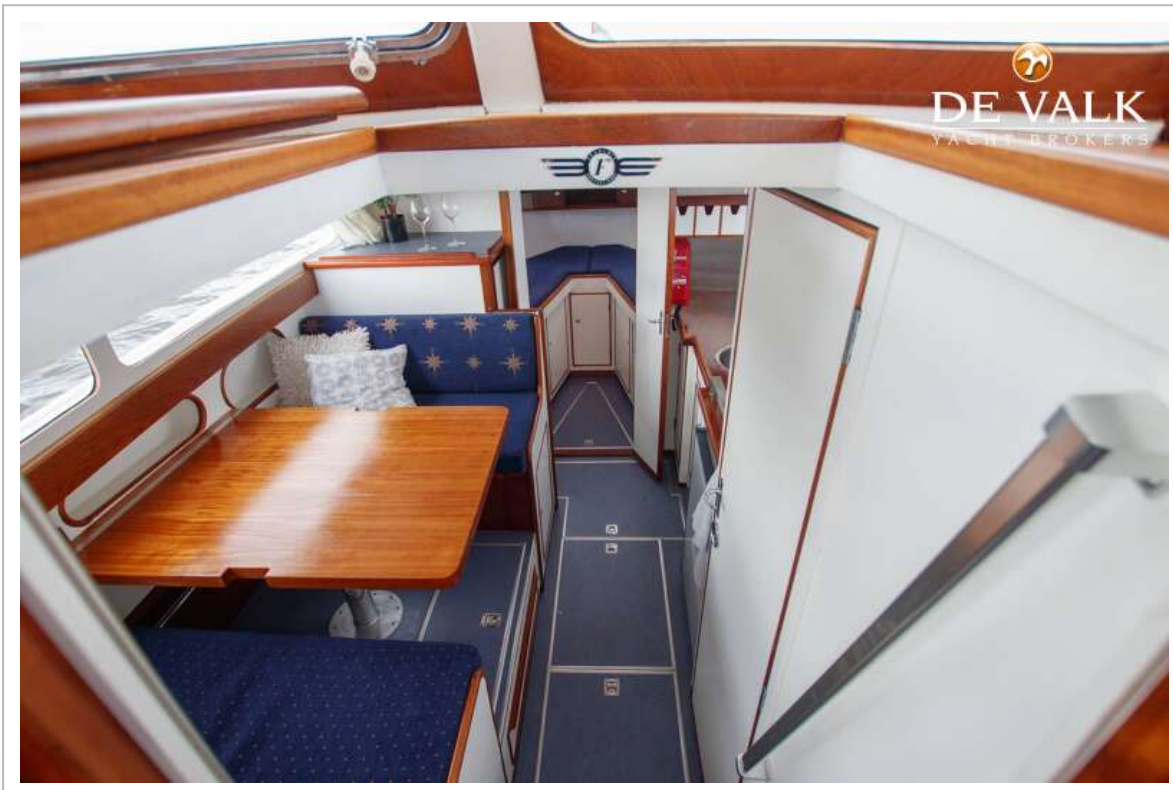
FEADSHIP AKERBOOM



FEADSHIP AKERBOOM



FEADSHIP AKERBOOM



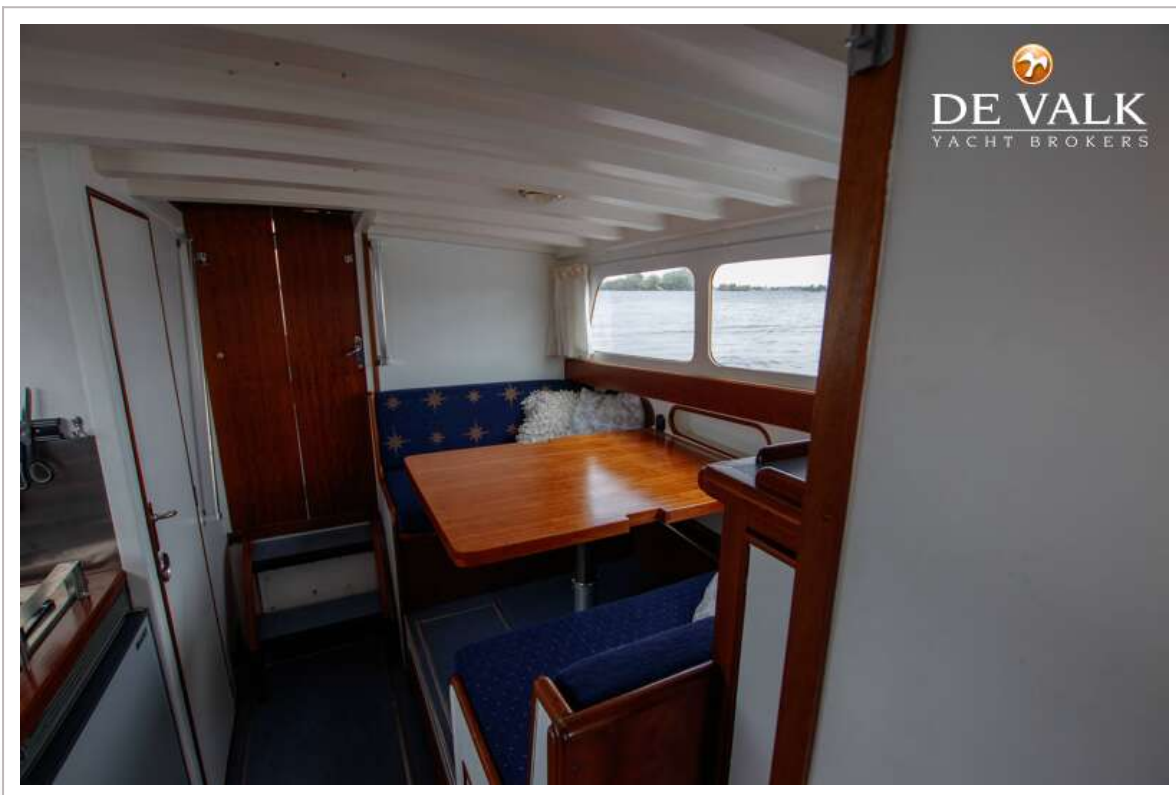
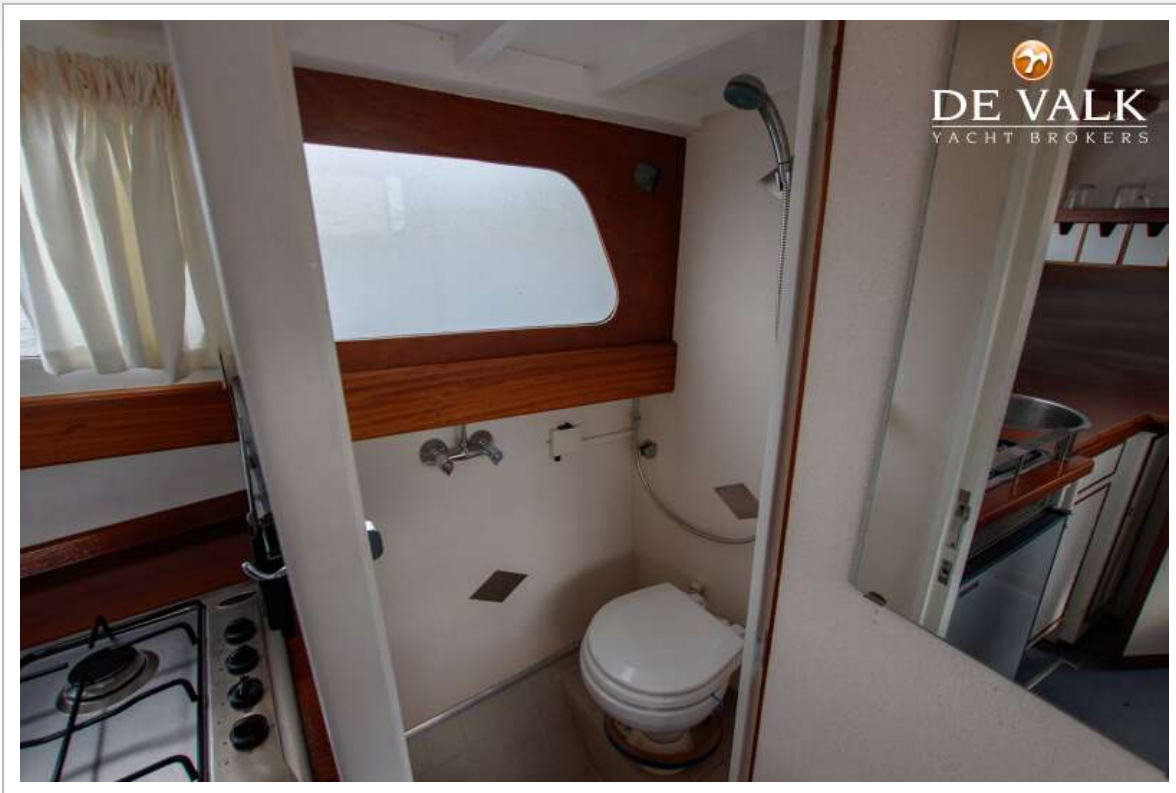
FEADSHIP AKERBOOM

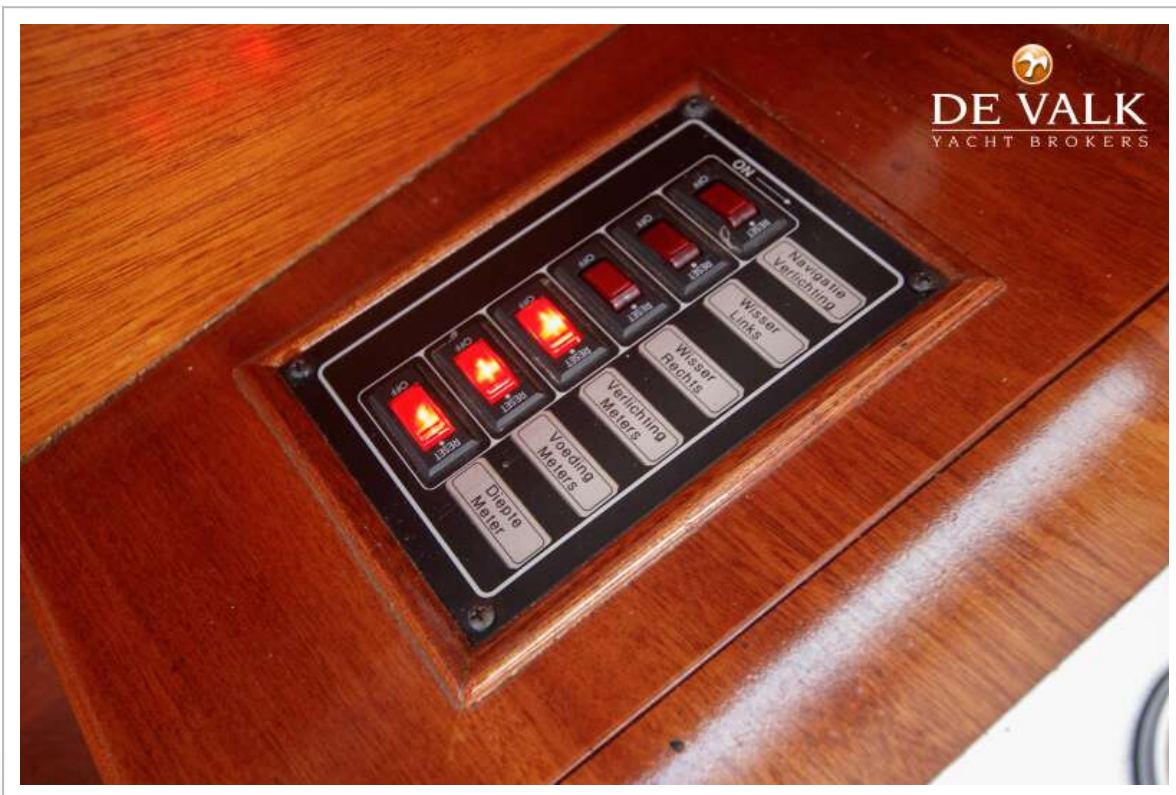
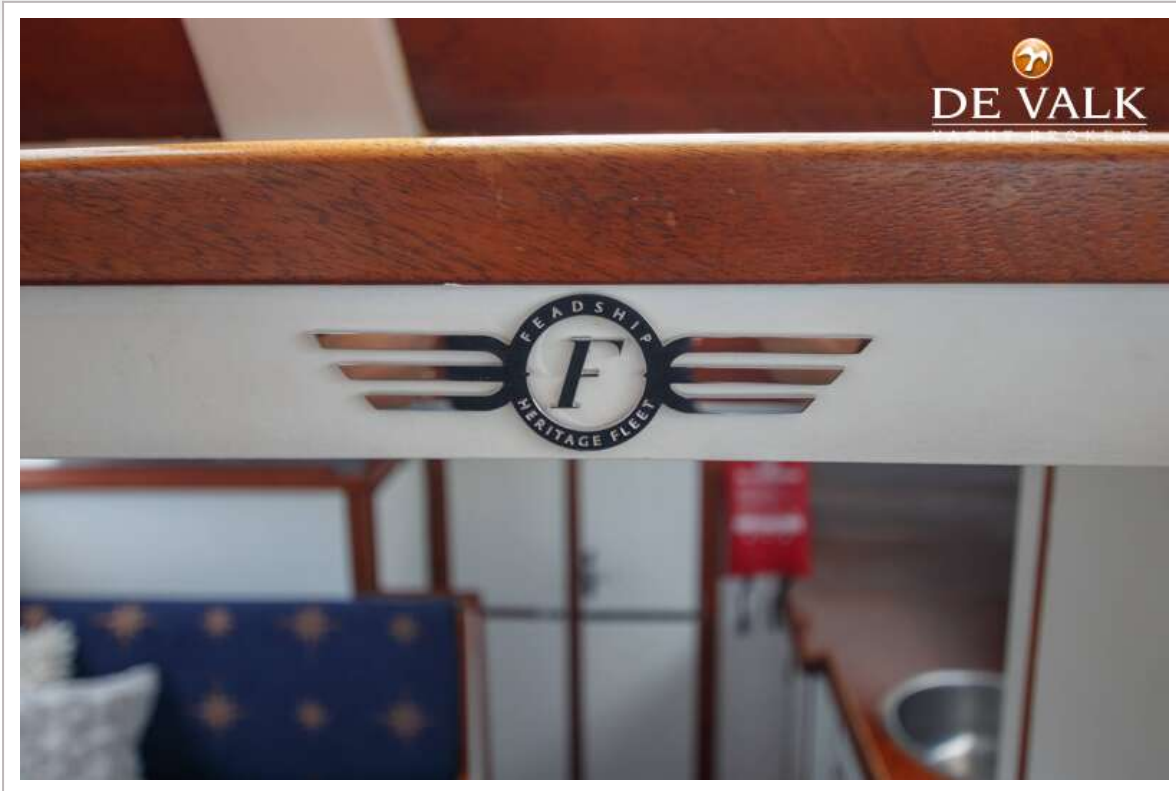


FEADSHIP AKERBOOM



FEADSHIP AKERBOOM

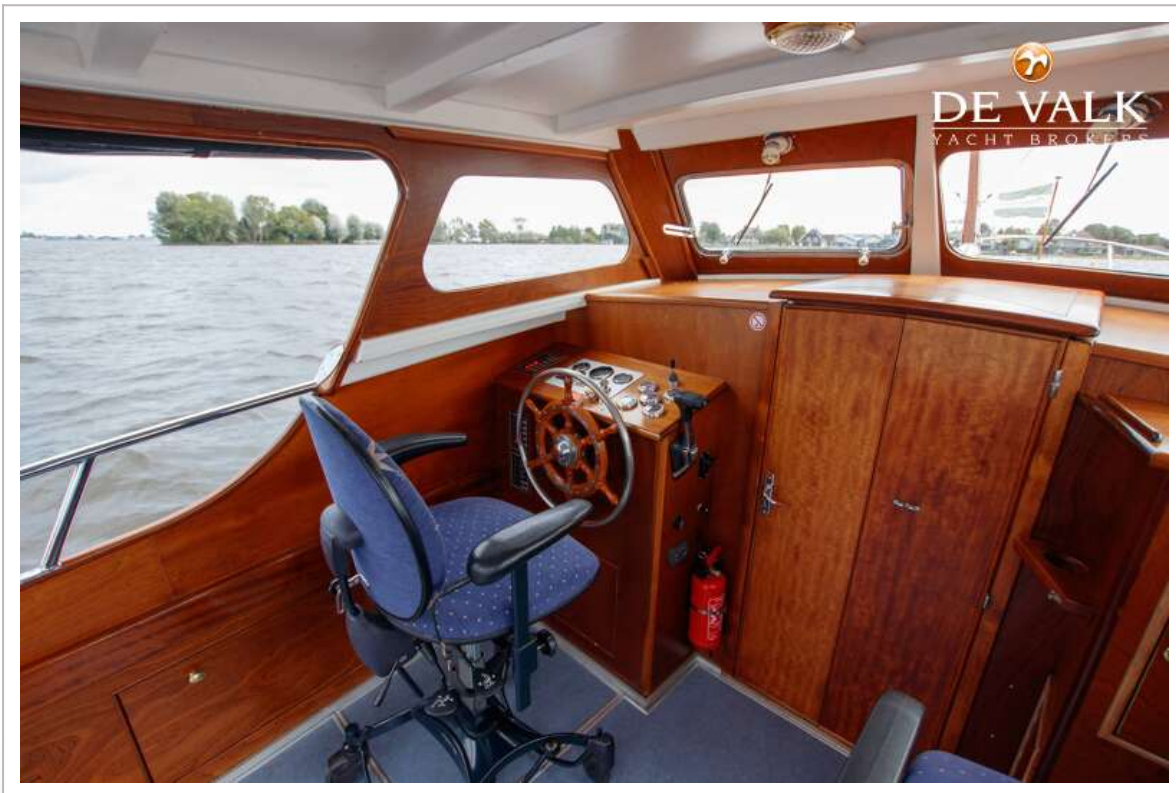




FEADSHIP AKERBOOM



FEADSHIP AKERBOOM



FEADSHIP AKERBOOM

