



DE VALK
YACHT BROKERS



VICTOIRE 1200



DE VALK
YACHT BROKERS

VICTOIRE 1200

BROKER'S COMMENTS

The Victoire 1200 is elegant and sturdy at the same time. Whether crossing oceans or cruising secluded waters, she will bring her crew everywhere safely, swiftly and in great comfort. The Victoire 1200 has a well proportioned cockpit and stowage space on deck and ample space below and is designed for a couple while an extra berth is available for two guests. She has a huge electric autonomy and has just completed a problem free circumnavigation. This Victoire 1200 is now ready to take her new owners for a new worldwide adventure.

Hans Visser

SPECIFICATIONS

Dimensions	12.00 x 3.64 x 2.10 (m)	Builder	JACHTWERF VICTORIA B.V.
Built	1991	Cabins	2
Material	GRP	Berths	6
Engine(s)	1 x Volvo Penta 2003T diesel	Hp/Kw	43.00 (hp), 31.65 (kw)
Asking price	€ 109.000 (VAT Paid)	Lying	contact Hindeloopen

CONTACT

Sales office	De Valk Hindeloopen	Telephone	+31 514 52 40 00
Address	Oosterstrand 1 8713 JS Hindeloopen The Netherlands	E-mail	hindeloopen@devalk.nl

DISCLAIMER

These particulars are given in good faith as supplied but cannot be guaranteed.



VICTOIRE 1200

GENERAL

Model	VICTOIRE 1200
Type	sailing yacht
LOA (m)	12,00
Beam (m)	3,64
Draft (m)	2,10
Air draft (m)	12,50
Headroom (m)	2,00
Year built	1991
Launched	1992
Builder	JACHTWERF VICTORIA B.V.
Country	The Netherlands
Designer	Dick Koopmans
Displacement (t)	9,8
Ballast (tonnes)	cast iron 3,9t
CE norm	NA
Hull material	GRP
Hull colour	blue Dark
Hull shape	round-bilged
Keel type	fin keel
Superstructure material	GRP
Rubbing strake	wood + stainless steel strip
Deck material	GRP
Deck finish	teak
Superstructure deck finish	teak
Cockpit deck finish	teak
Antifouling (year)	2024
Dorades	2x
Window material	tempered glass Rhigo
Deckhatch	4 x Gebo incl fly screen and shade
Portholes	stainless steel



VICTOIRE 1200

Insulation	foam
Fuel tank (litre)	stainless steel 270 ltr.
Level indicator (fuel tank)	Glass
Freshwater tank (litre)	stainless steel 300 ltr.
Blackwater tank (litre)	80
Level indicator (blackwater)	Floater broken
Blackwater tank extraction	deck extraction
Wheel steering	mechanical Whitlock Cobra de luxe
Emergency tiller	Stainless steel

ACCOMMODATION

Cabins	2
Berths	6
Interior	Classic wood
Layout	Standard
Floor	parquet Teak look
Open cockpit	yes
Saloon	yes
Headroom saloon (m)	2 mtr.
Heating	diesel ducted hot air Eberspacher D5 with airtronic thermostat serviced 2024
Heating 2	electric 220V oil radiator 800/1200/2000W with thermostat
Navigation center	yes
Chart table	yes
Aft Cabin	yes
Sliding door to cockpit	yes
Galley	L-shaperd to port
Countertop	plastic Formica
Sink	Stainless
Cooker	calor gas 3 burner both (butane and propane)
Oven	yes



VICTOIRE 1200

Gas alarm	Vetus including remote switch at cooker
Fridge	Isotherm new 2016 energy efficient
Freezer	Dometic 2017
Hot water system	220V + engine boiler new 2017
Water pressure system	electrical switch via 3 way valve to manual
Manual and/or foot pump	switch via 3 way valve to electric
Owners cabin	double bed
Bed length (m)	2,00 x 1,40 mtr.
Wardrobe	hanging and shelves
Bathroom	shared
Toilet	Jabsco Large new 2024
Toilet system	manual
Wash basin	at the toilet
Shower	shared
Guest cabin 1	v-bed
Bed length (m)	2,00 x 0,70
Wardrobe	hanging and shelves
Extra info	Black and Decker dust buster 12 V Vacuum

MACHINERY

No of engines	1
Make	Volvo Penta
Type	2003T
HP	43
kW	31.65
Fuel	diesel
Year installed	1991
Maximum speed (kn)	7
Cruising speed (kn)	5,5
Consumption (l/hr)	2
Range (nm)	675



VICTOIRE 1200

Engine hours	5670
Engine cooling system	freshwater heat exchanger
Drive	shaft
Shaft seal	yes
Engine controls	bowden cable
Gearbox	mechanical MS2B
Exhaust	watercooled
Propeller type	feathering Max Prop 2016
Propeller shaft material	stainless steel
Shaft lubrication	water
Manual bilge pump	yes
Electric bilge pump	yes
Electrical installation	12 V DC and 220 V AC
Batteries	12 V
Start battery	1 x 80 AH Optima
Service battery	3 x 220 AH Victron deep cycle Gel 2017
Battery monitor	Victron BMV 702
Battery charger	Victron easy solar
Battery charger/inverter	Victron Digital Multifunctional 12/1600/70 2016
Solar panel	4 x 100 WP 1 x 250 WP Victron
Diode battery combiners	Victron
Shorepower	with cable
Watermaker	Spectra Ventura 150 20 l/h
Extra info	Oilcooler ner 2024
Extra info	Engine maintenance records kept by owner

NAVIGATION

Compass	C Plath Venus
Electric compass	yes
Depth sounder	Autohelm ST60+
Log	Autohelm ST60+



VICTOIRE 1200

Windset	Autohelm ST60+
VHF	2016 B&G incl wireless handset V50 + H50
VHF handheld	yes
Autopilot	Autohelm ST6002 rebuilt 2021
Wind vane steering install.	Monitor in Stainless
Rudder angle indicator	yes
Radar	Raymarine Quantum 2016
GPS	yes
Plotter	Raymarine MFD 2016
Radar/GPS/plotter	Raymarine 2016
Wifi antenna	2016 bullit antenna in mast top
AIS transceiver	Watcheye 2016
EPIRB	2016
Personal MOB transmitter	2016
Navigation lights	LED (all lighting is LED)

EQUIPMENT

Fixed windscreen	yes
Sprayhood with grab rail	yes
Cockpit cover	yes
Bimini	yes
Sun awning	yes
Winter cover	yes
Cockpit cushions	yes
Cockpit table	yes
Boarding ladder	yes
Gangway	yes
Deck shower	yes
Anchor	Rocna 25 kg 2017
Anchor chain	60 M G40 10 mm 2021
Anchor 2	Bruce 20 kg



VICTOIRE 1200

Anchor chain	Pre runner
Windlass	manual
Dinghy	Caribe 2.70 Hypalon with umbrella anchor
Outboard	Tohatsu 9,8 HP 2 stroke
Outboard support	yes
Sea railing	stainless steel Wire
Grab rail (superstructure)	wood
Railing side opening gates	Both sides
Pushpit	yes
Pulpit	yes
Life raft	container
Life raft (pers)	4
Last life raft survey	New 2016
Lifejackets	New 2016
Safety harness	yes
Lifebuoy	yes
Danbuoy	yes
Safety lines on deck	yes
Rope cutter	yes
Window ventilator	4 x Caframo & 1 x Hella Turbo for cabinds and salon
Horn	air pressure
Binocular	yes
Radar reflector	yes
Fenders	yes
Mooring lines	yes
Spare parts	Several
Tools	Several
TV	Philips 2017 as monitor only
Radio-cd player	Pioneer with bluetooth
iPod connection	yes
Speakers in salon	yes
Clock - barometer	Schatz



Fire extinguisher	yes
Auto extinguisher system	In engineroom 2017
Extra info	yes

RIGGING

Rigging	cutter
Standing rigging	wire New 2016
Brand mast	Seldén
Material mast	aluminium
Spreaders	2 sets
Mainsail	yes
Mainsail cover	yes
Battcars	yes
Fully battened mainsail	UK de Vries 2016
Cutterstay	yes
Genoa furler	Manual
Genoa cover	yes
Cutter furler	Manual
Gennaker	In good condition
Staysail	De Vries
Staysail furler	yes
Yankee	De Vries
Reefing System	slabreefing 3 reefs replaced 2016
Backstay adjuster	mechanical
Boomvang	gasspring
Primary sheet winch	yes
Secondary sheet winch	yes
Genoa sheetwinches	yes
Halyard winches	yes
Reefing winch	yes
Spi-pole	aluminium



VICTOIRE 1200

Gennaker pole	yes
Isolated backstay	yes
Extra info	Spare old main and yankee (de Vries)
Extra info	All halyards replaced 2017



VICTOIRE 1200



VICTOIRE 1200



VICTOIRE 1200



VICTOIRE 1200



VICTOIRE 1200



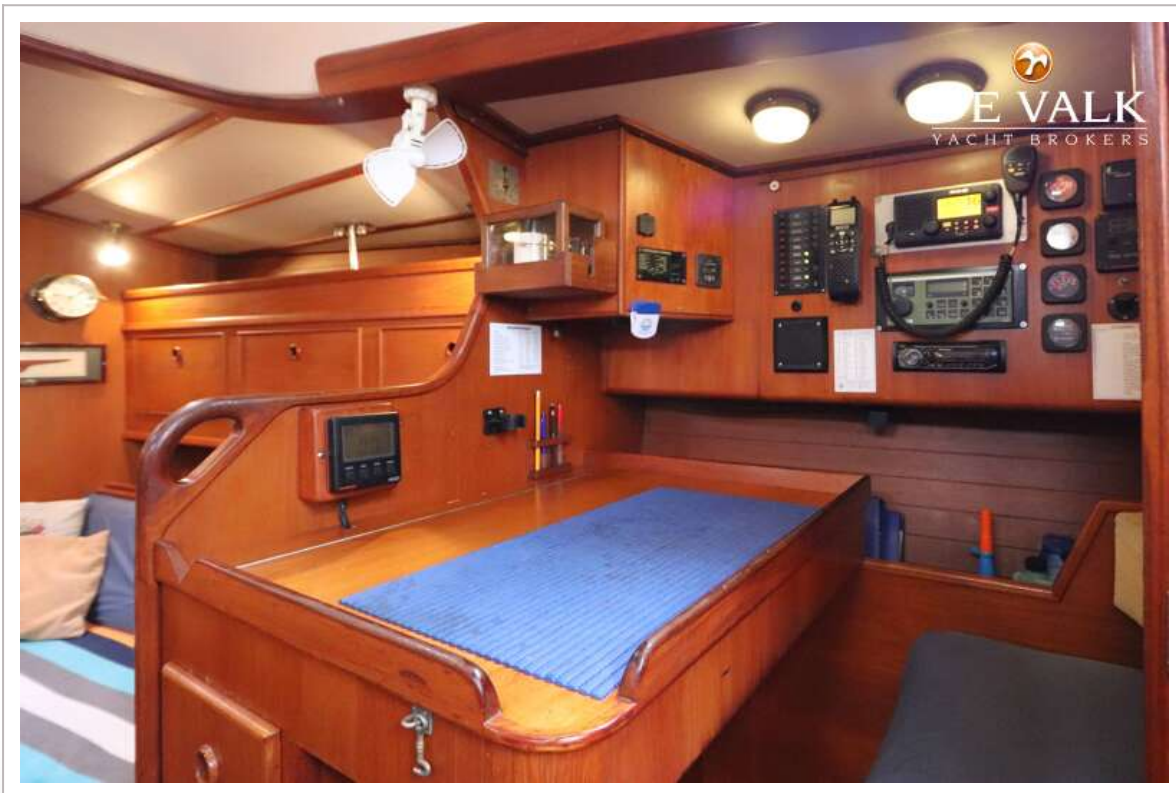
VICTOIRE 1200



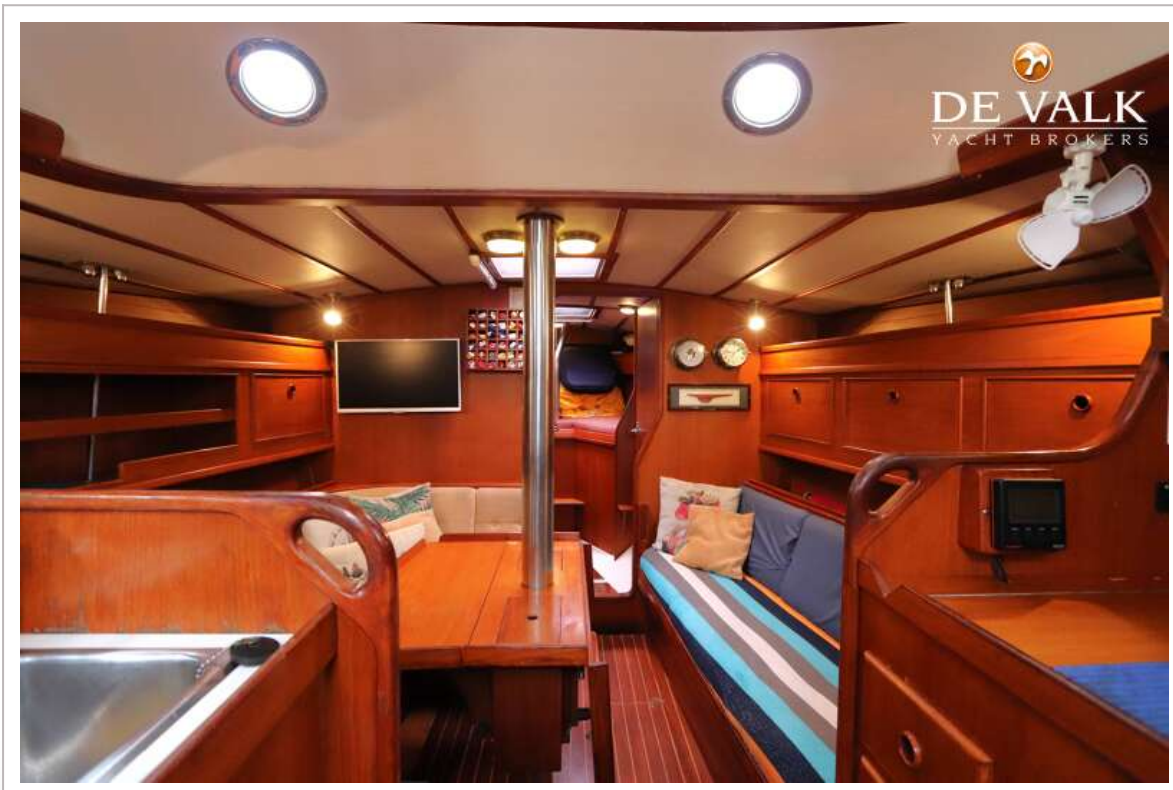
VICTOIRE 1200



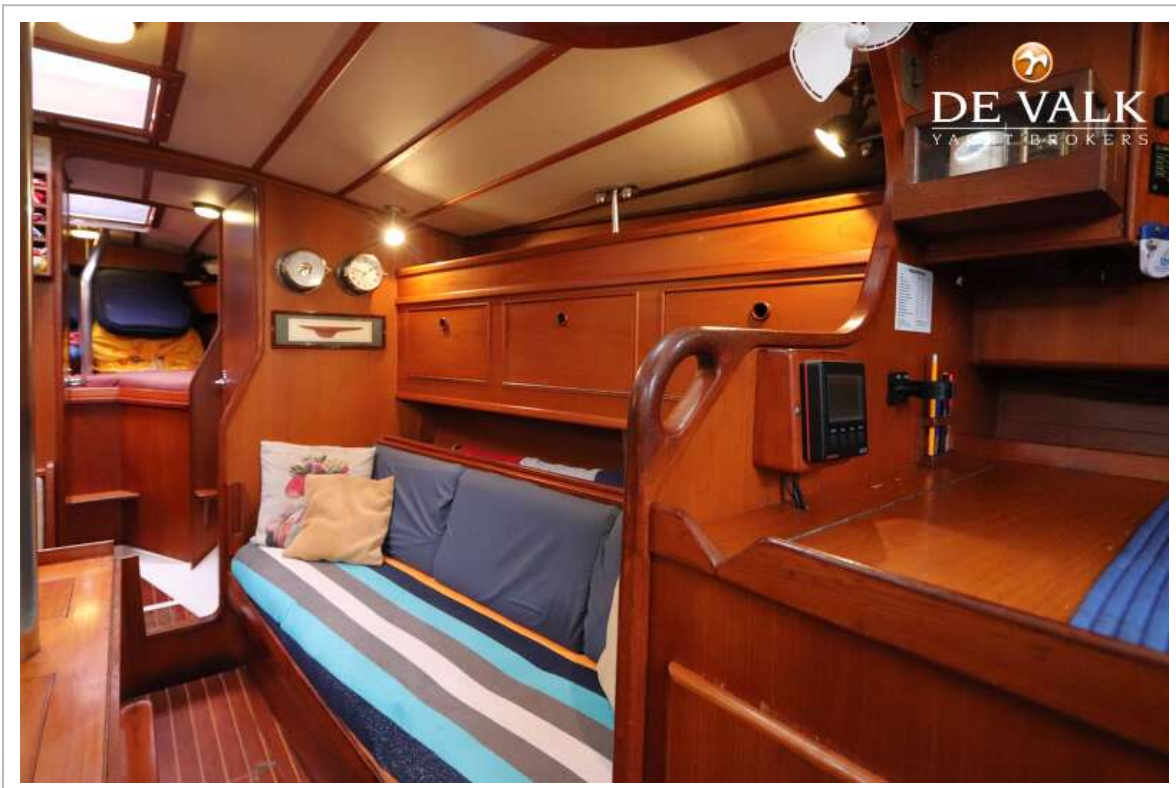
VICTOIRE 1200



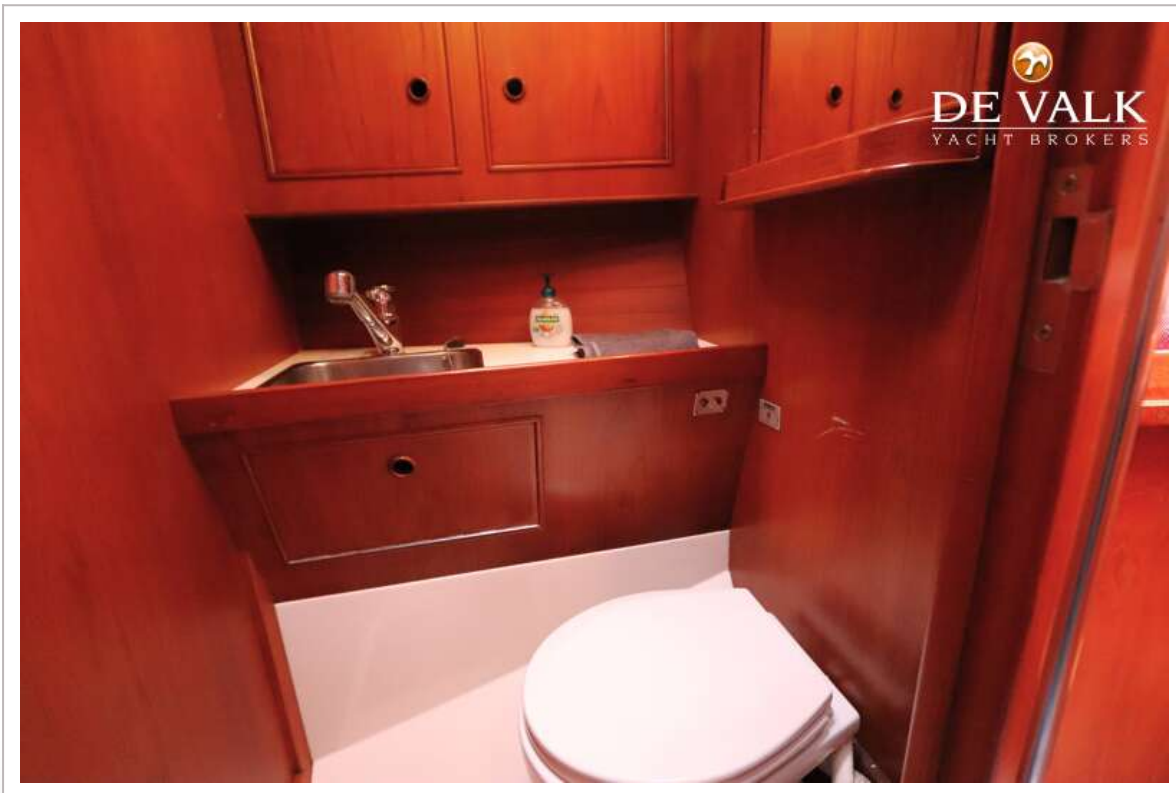
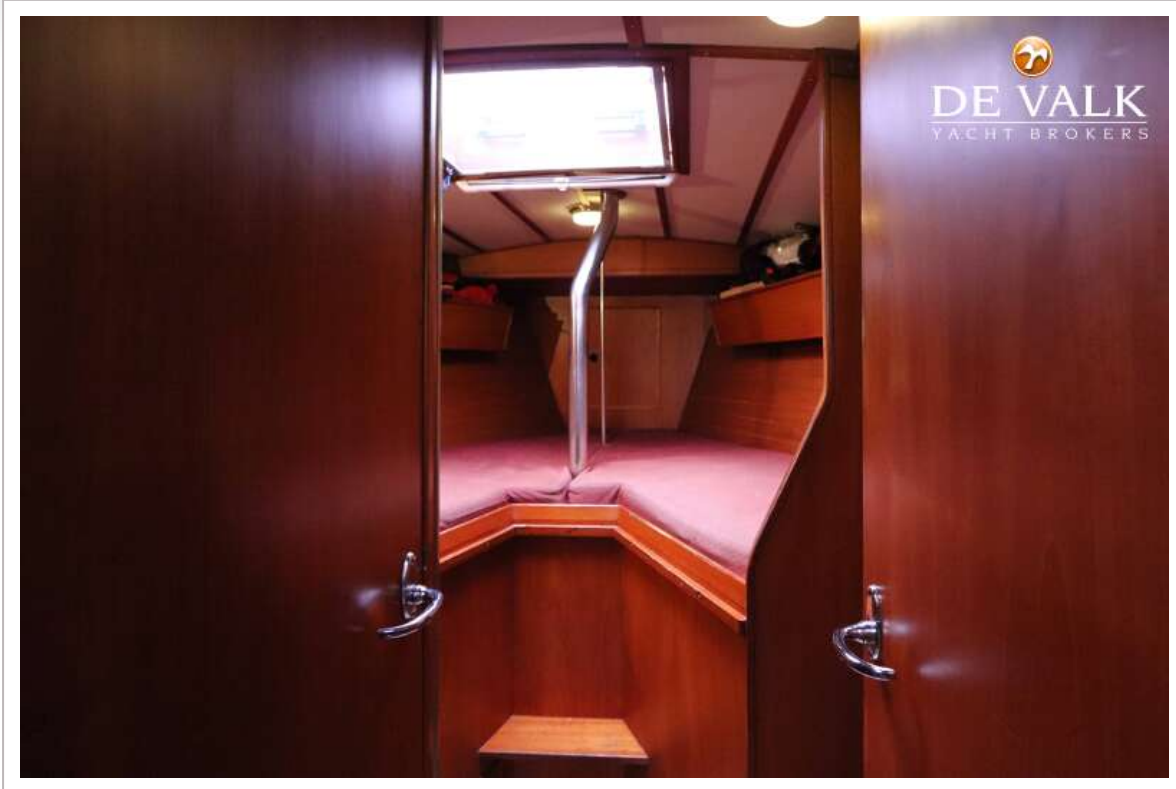
VICTOIRE 1200



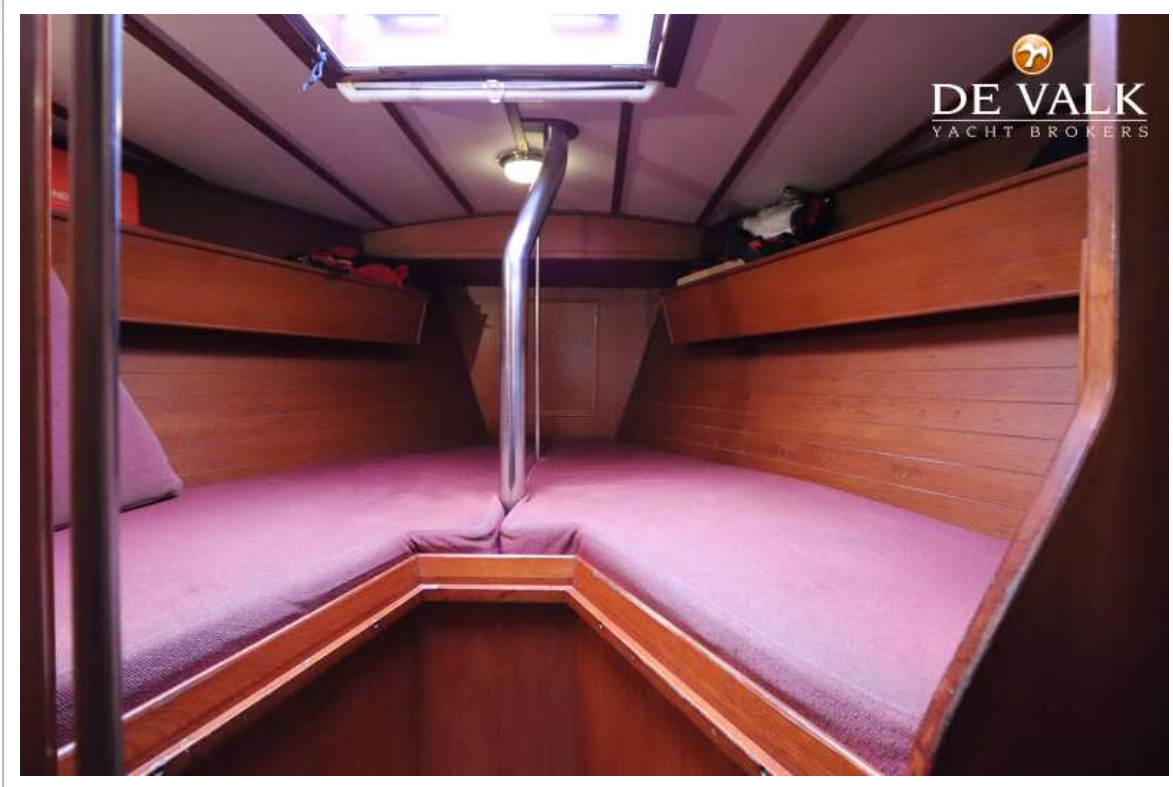
VICTOIRE 1200



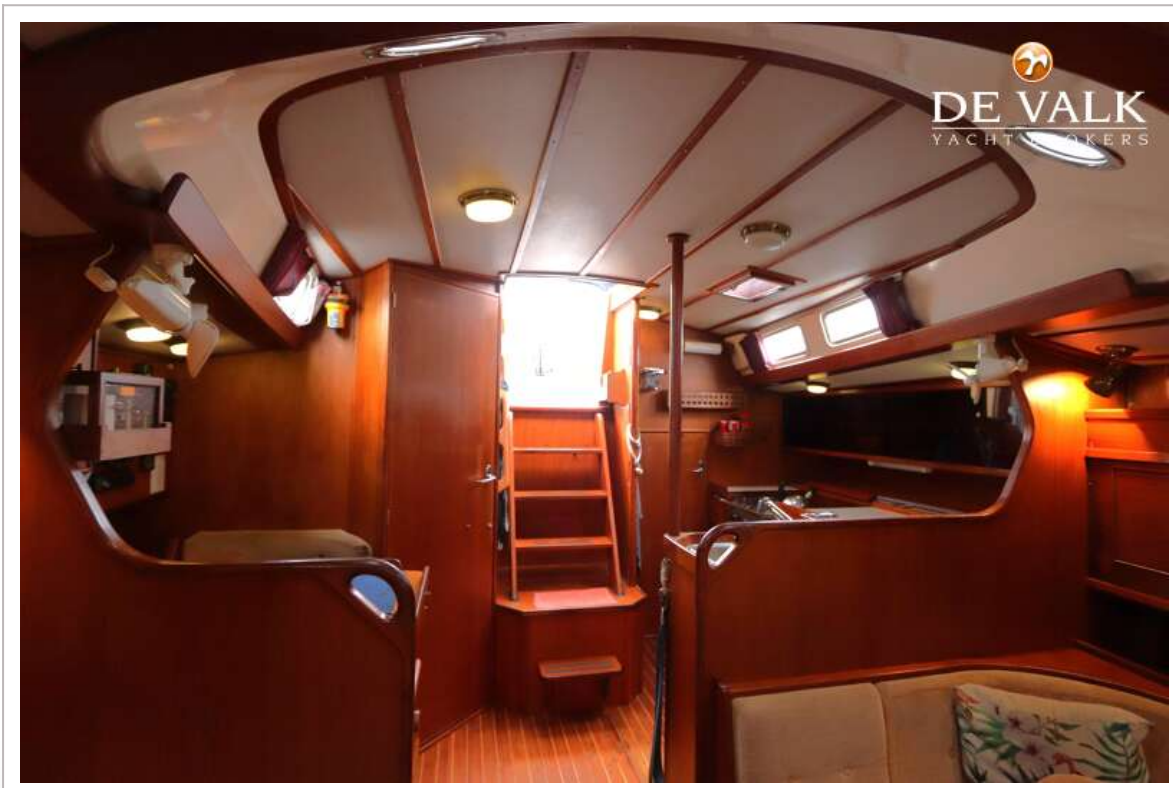
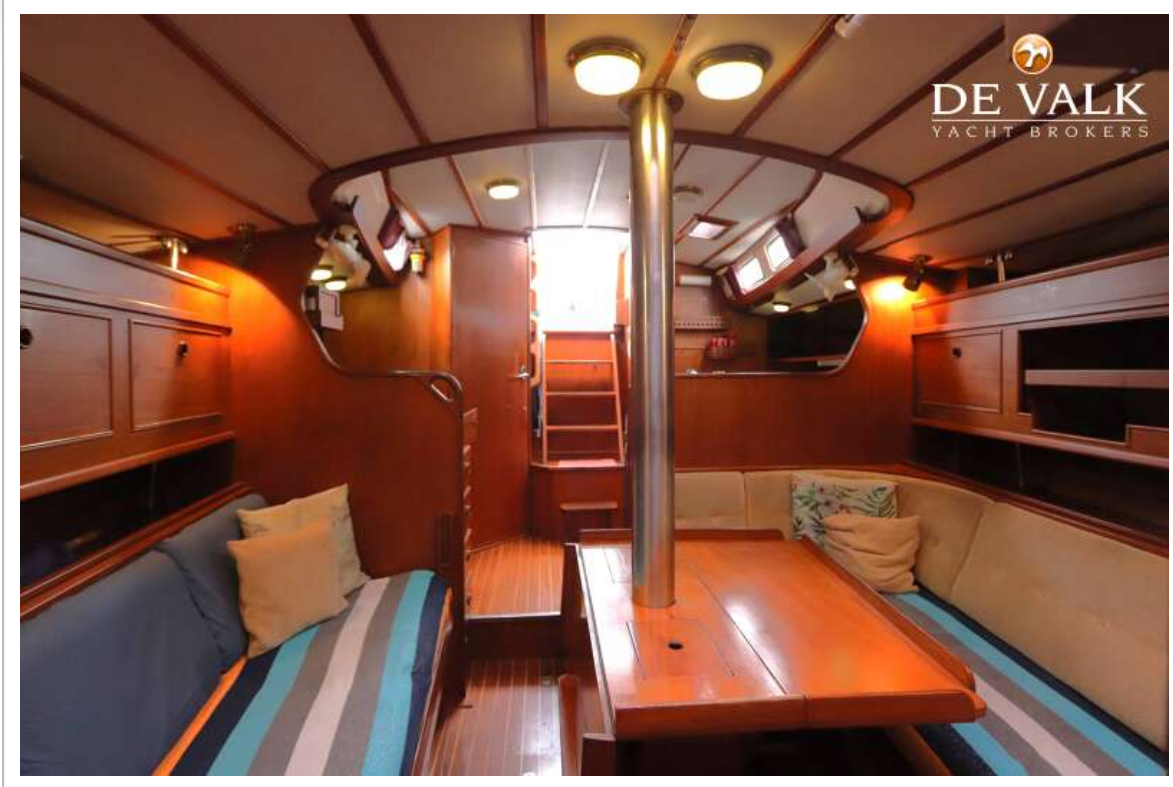
VICTOIRE 1200



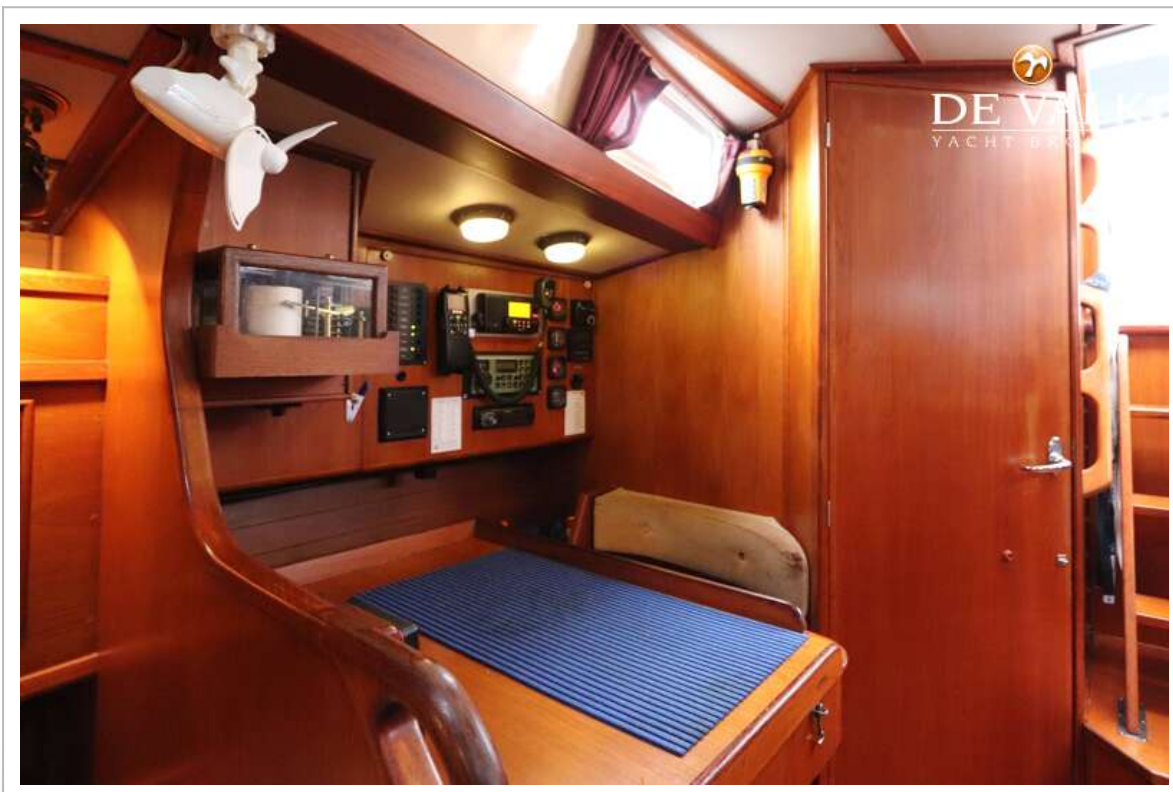
VICTOIRE 1200



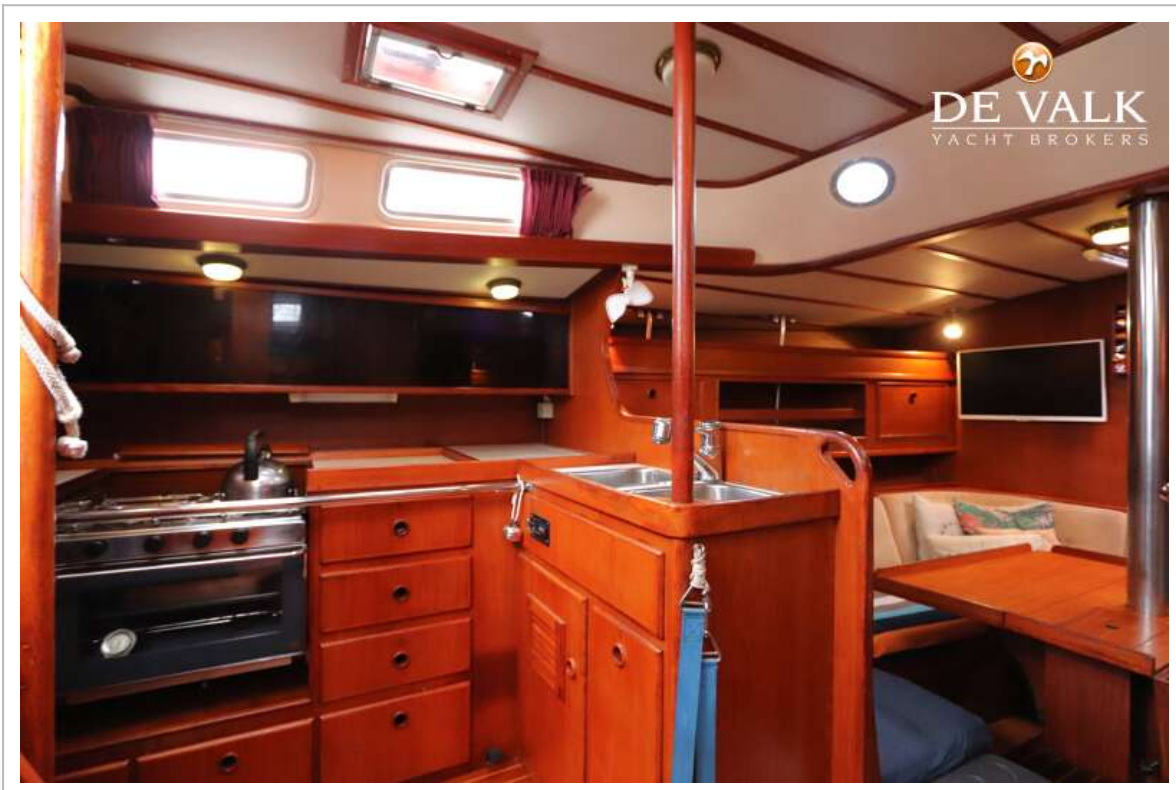
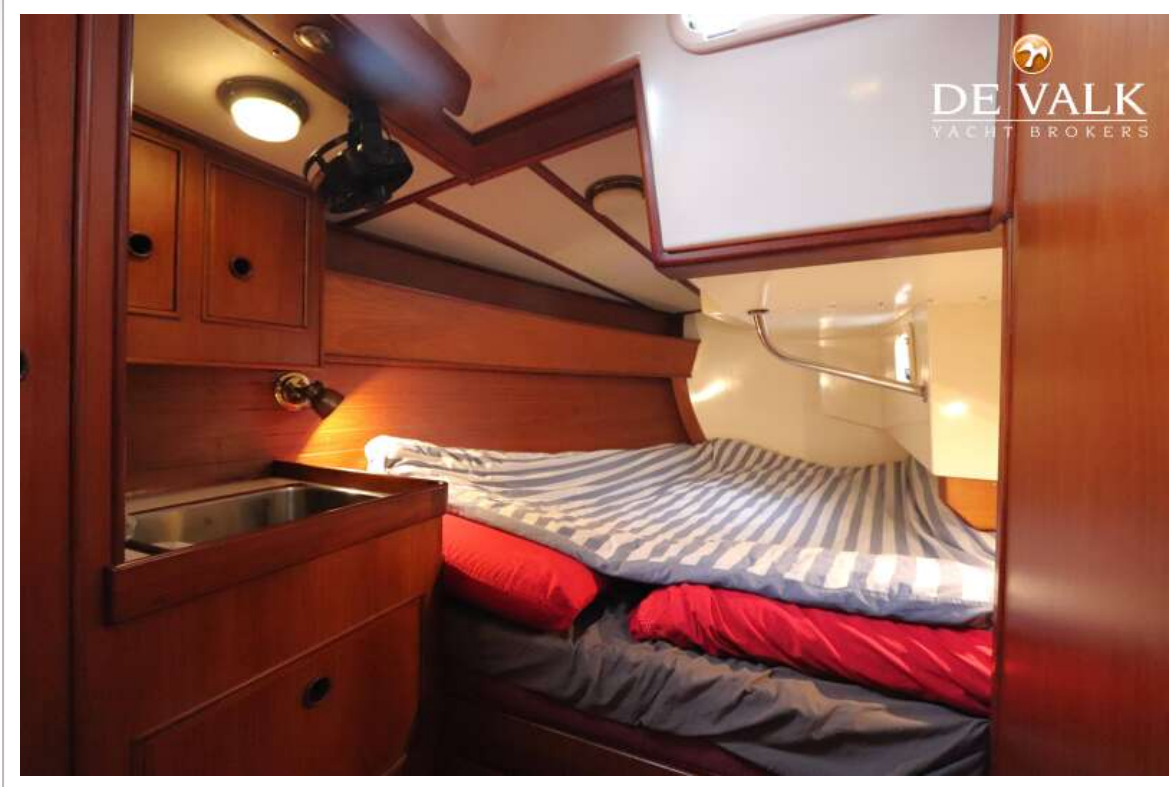
VICTOIRE 1200



VICTOIRE 1200



VICTOIRE 1200



VICTOIRE 1200

