



DE VALK  
YACHT BROKERS



NORTH WIND 50



DE VALK  
YACHT BROKERS

# NORTH WIND 50

## BROKER'S COMMENTS

This very reliable North Wind 50 has a very solid hull construction and a safe and comfortable layout. She has been added a stainless steel construction aft, for the tender, 2 solar panels and a wind generator. The large salon area leads through the galley towards the large in-suite master aft cabin. Forward you will find 2 guest cabins and a 2nd bathroom. The rigging and sails were renewed some years ago, and new navigation equipment has been added recently. She just did a 600NM passage before the season 2023. A beautiful, smooth yet tough sailing yacht that lies great in even rough seas.

*Tue Simon Fasting*

## SPECIFICATIONS

<b>Dimensions</b>	14.99 x 4.50 x 2,18 / 2.18 (m)	<b>Builder</b>	North Wind Yard S.A.
<b>Built</b>	2001	<b>Cabins</b>	3
<b>Material</b>	GRP	<b>Berths</b>	7
<b>Engine(s)</b>	1 x Volvo Penta TAMD31M BT diesel	<b>Hp/Kw</b>	110.00 (hp), 80.96 (kw)
<b>Asking price</b>	sold (VAT )	<b>Lying</b>	at sales office

## CONTACT

<b>Sales office</b>	De Valk Barcelona	<b>Telephone</b>	+34932202825
<b>Address</b>	Barcelona region Barcelona Spain	<b>E-mail</b>	barcelona@devalk.nl

## DISCLAIMER

These particulars are given in good faith as supplied but cannot be guaranteed.



# NORTH WIND 50

## GENERAL

<b>Model</b>	NORTH WIND 50
<b>Type</b>	sailing yacht
<b>LOA (m)</b>	14,99
<b>Beam (m)</b>	4,50
<b>Draft (m)</b>	2,18
<b>Draft min (m)</b>	2,18
<b>Year built</b>	2001
<b>Builder</b>	North Wind Yard S.A.
<b>Country</b>	Spain
<b>Displacement (t)</b>	14,6
<b>CE norm</b>	A
<b>Hull material</b>	GRP
<b>Hull colour</b>	blue
<b>Superstructure material</b>	GRP Some wear and tear on top part
<b>Deck finish</b>	teak Some planks need renewal forward. Corking advised in the future
<b>Window frame</b>	aluminium
<b>Fuel tank (litre)</b>	2 X 345
<b>Level indicator (fuel tank)</b>	yes
<b>Freshwater tank (litre)</b>	2 X 453
<b>Blackwater tank (litre)</b>	yes
<b>More info on paintwork</b>	Paint on hull is G5002- blue

## ACCOMMODATION

<b>Cabins</b>	3
<b>Berths</b>	7
<b>Interior</b>	teak
<b>Floor</b>	teak
<b>Air-conditioning</b>	single cycle airco Cruiseair
<b>Sink</b>	stainless steel



# NORTH WIND 50

<b>Cooker</b>	calor gas 3
<b>Oven</b>	yes
<b>Extractor</b>	yes
<b>Gas alarm</b>	Trident
<b>Microwave</b>	yes
<b>Fridge</b>	2
<b>Freezer</b>	1
<b>Hot water system</b>	220V + engine
<b>Water pressure system</b>	electrical
<b>Crockery</b>	yes
<b>Owners cabin</b>	double bed
<b>Wardrobe</b>	hanging/drawers/shelves
<b>Bathroom</b>	en suite
<b>Guest cabin 1</b>	double bed
<b>Wardrobe</b>	hanging/drawers/shelves
<b>Bathroom</b>	shared
<b>Guest cabin 2</b>	twin single
<b>Wardrobe</b>	hanging/drawers/shelves
<b>Bathroom</b>	shared
<b>Washing machine</b>	yes
<b>Extra info</b>	Led lights interior

## MACHINERY

<b>No of engines</b>	1
<b>Make</b>	Volvo Penta
<b>Type</b>	TAMD31M BT
<b>HP</b>	110
<b>kW</b>	80.96
<b>Fuel</b>	diesel
<b>Engine hours</b>	3789
<b>Drive</b>	shaft



# NORTH WIND 50

<b>Gearbox</b>	Hurth HS45A
<b>Bowthruster</b>	electric Vetus
<b>Propeller type</b>	Max prop
<b>Propeller blades</b>	3 - 460mm
<b>Generator</b>	Maze - new heat exchanger and start engine 2023
<b>Running hours generator</b>	1006
<b>Start battery</b>	1
<b>Service battery</b>	6
<b>Wind generator</b>	1
<b>Solar panel</b>	2
<b>Watermaker</b>	100L / hour

## NAVIGATION

<b>Compass</b>	yes
<b>Multi control display</b>	New
<b>Depth sounder</b>	yes
<b>Windset</b>	Raymarine
<b>VHF</b>	Raymarine 240E
<b>VHF handheld</b>	yes
<b>Autopilot</b>	Garmin Reactor 40
<b>Radar</b>	yes
<b>GPS</b>	Furuno Waas Navigator
<b>Plotter</b>	yes
<b>AIS receiver</b>	yes
<b>AIS transponder</b>	yes
<b>Navigation lights</b>	Aquasignal

## EQUIPMENT

<b>Bimini</b>	Beige - 2 years old
<b>Anchor chain</b>	40 m
<b>Windlass</b>	1500W



Dinghy	With outboard
Life raft	yes
Lifejackets	yes
Satellite	Phone Sailor

## RIGGING

Rigging	sloop-cutter
Standing rigging	wire Less than 10 years old
Mainsail	Fully battened
Mainsail cover	yes
Main staysail	yes
Genoa	Electric
Gennaker	Electric
Primary sheet winch	Harken electric
Secondary sheet winch	Harken electric



# NORTH WIND 50

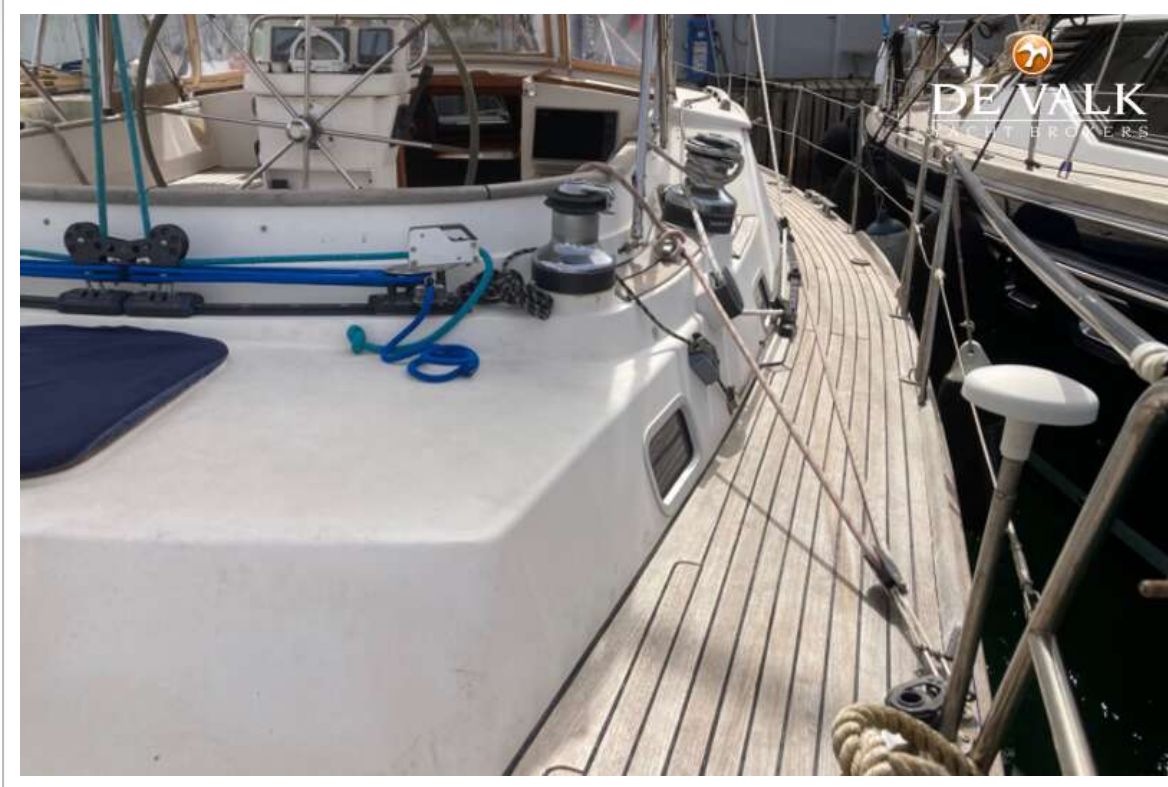


# NORTH WIND 50

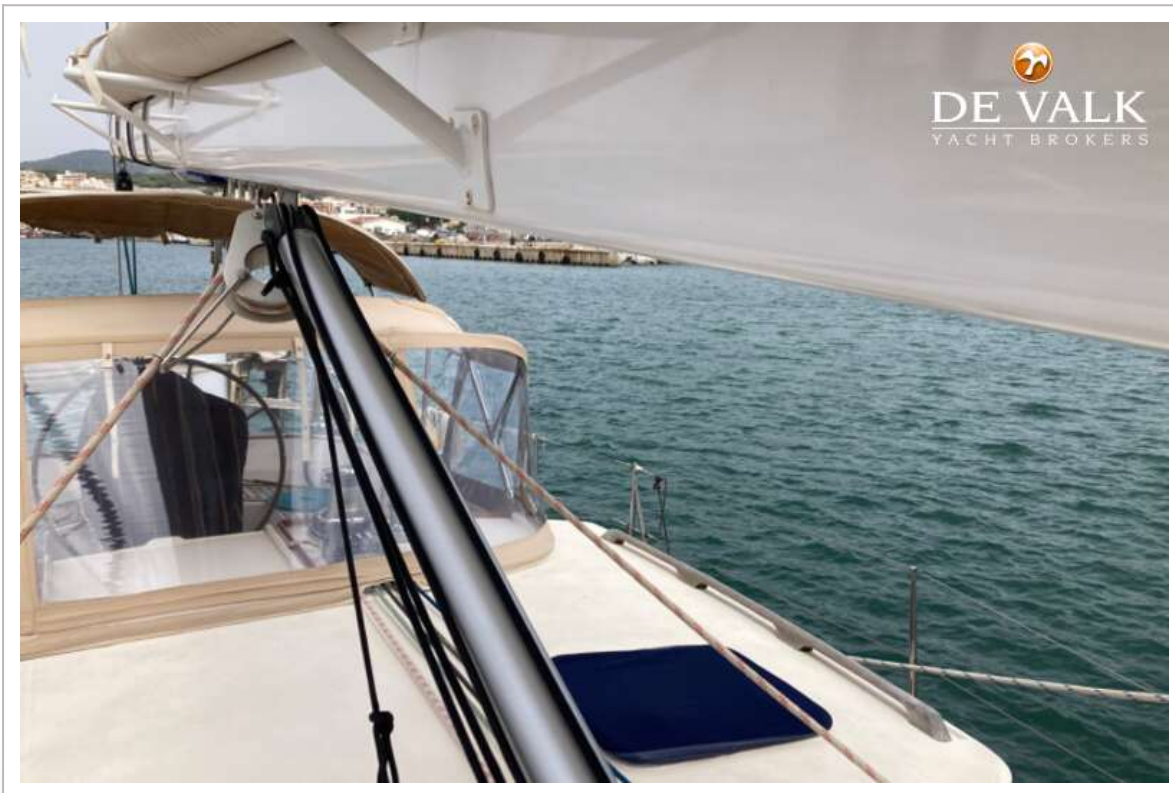
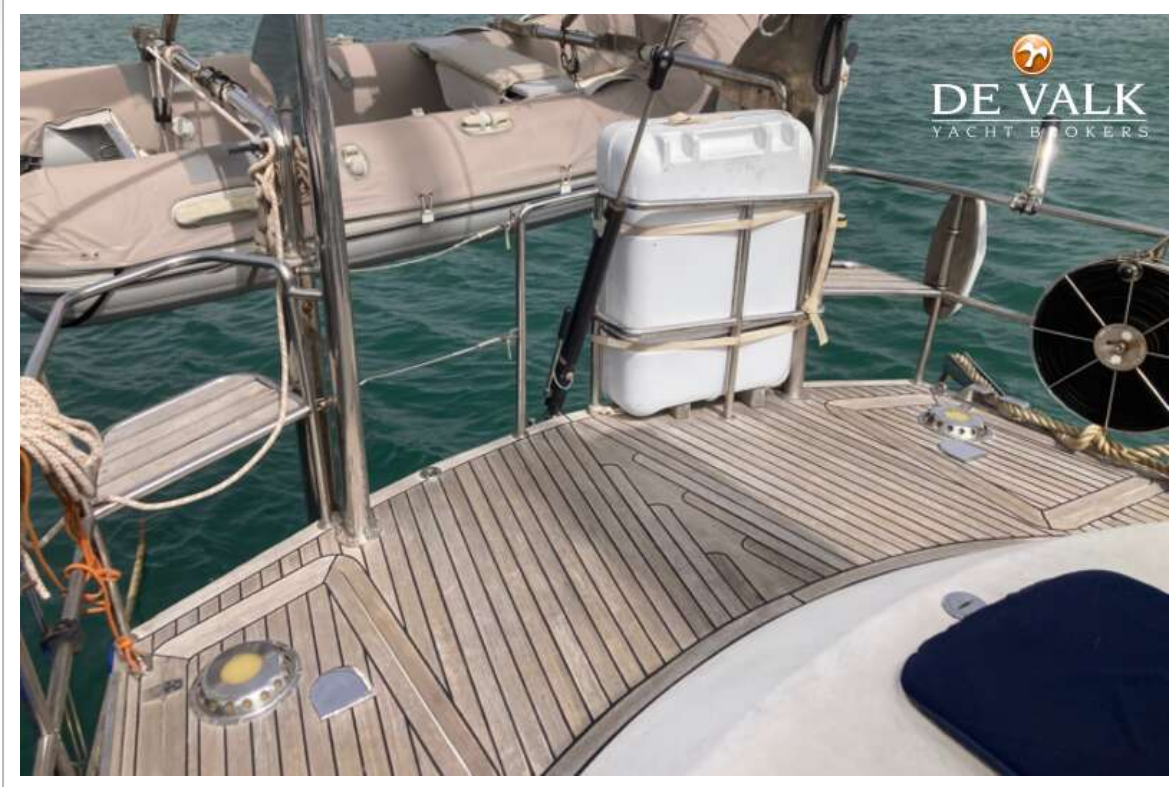




# NORTH WIND 50



# NORTH WIND 50



# NORTH WIND 50



# NORTH WIND 50



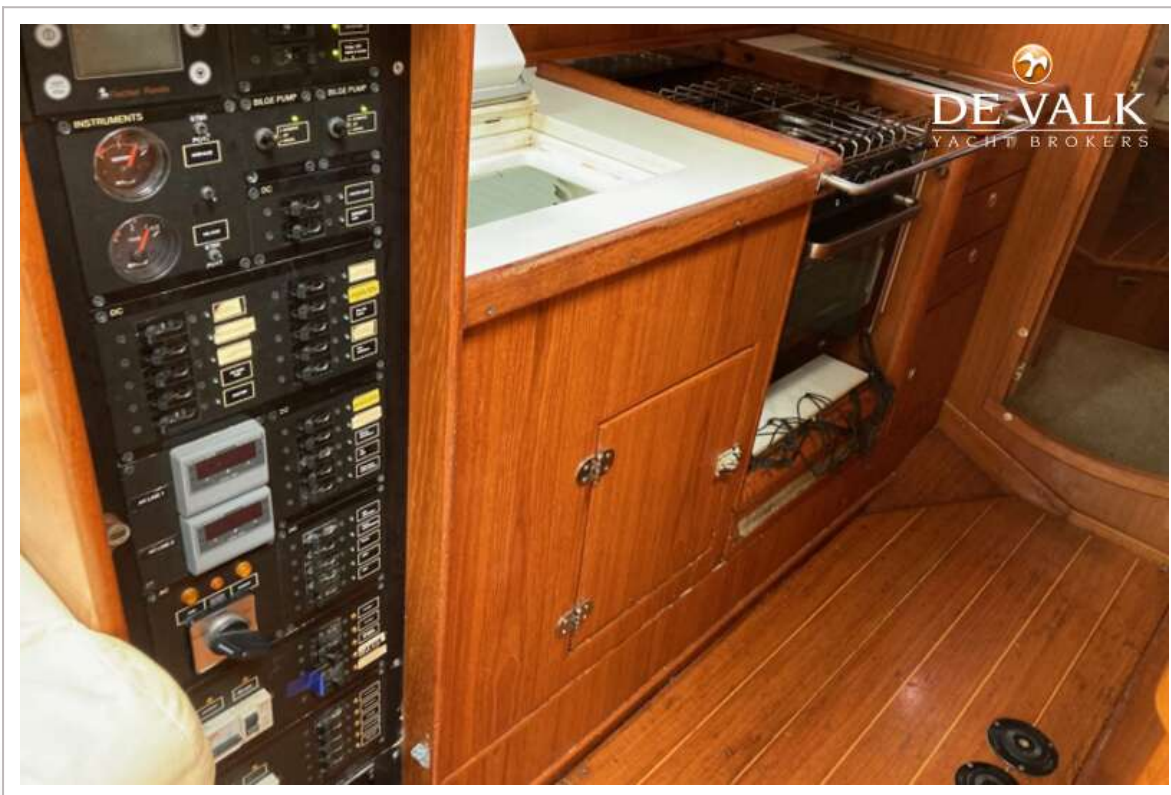
# NORTH WIND 50



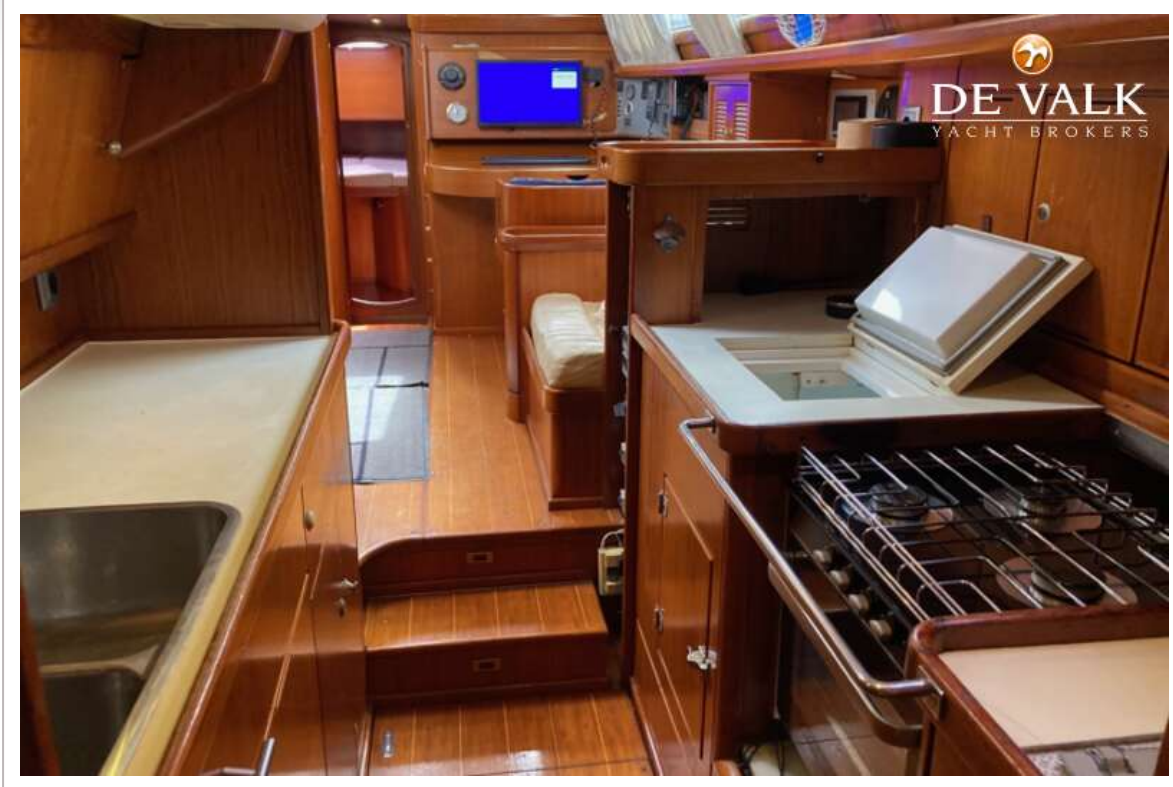
# NORTH WIND 50



# NORTH WIND 50



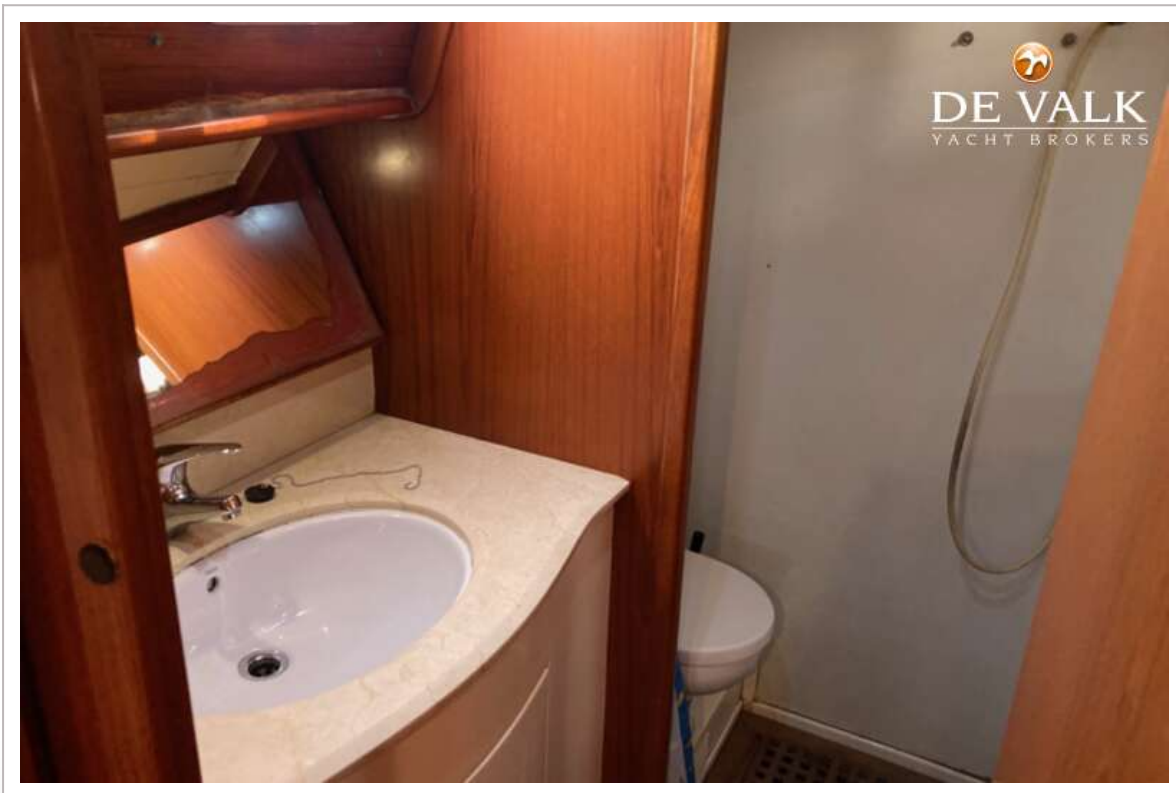
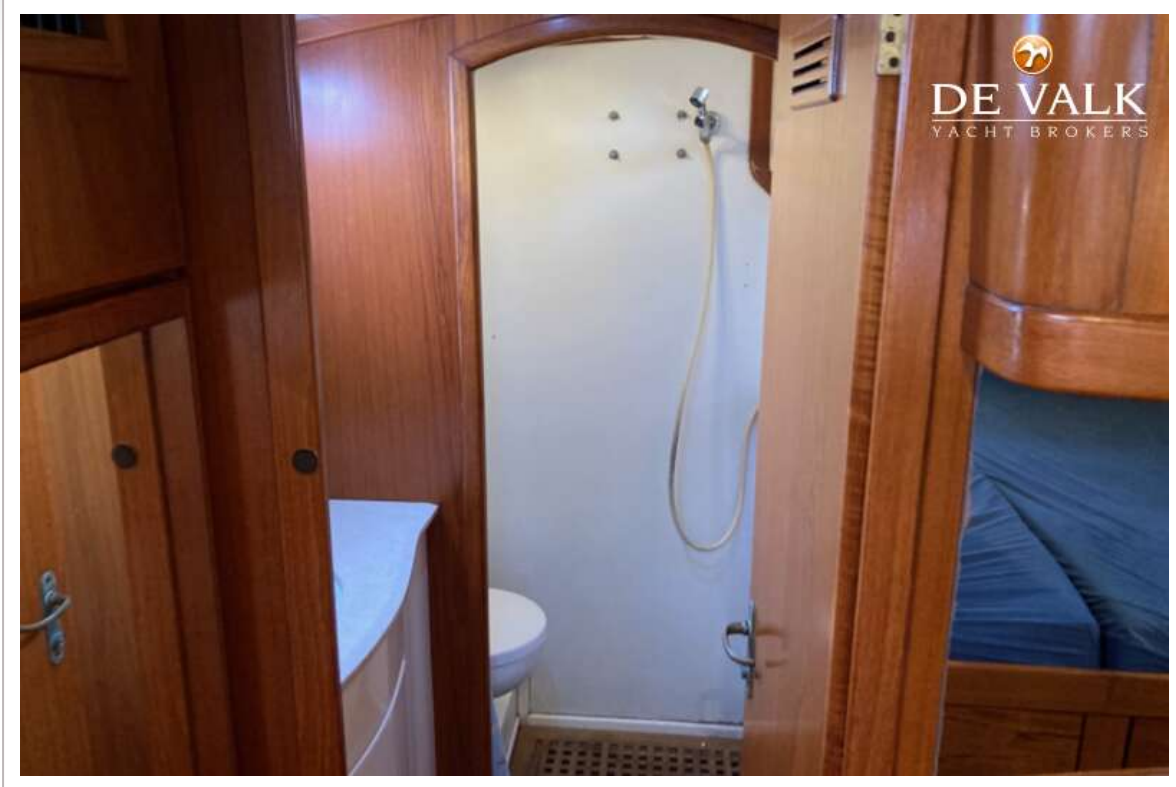
# NORTH WIND 50



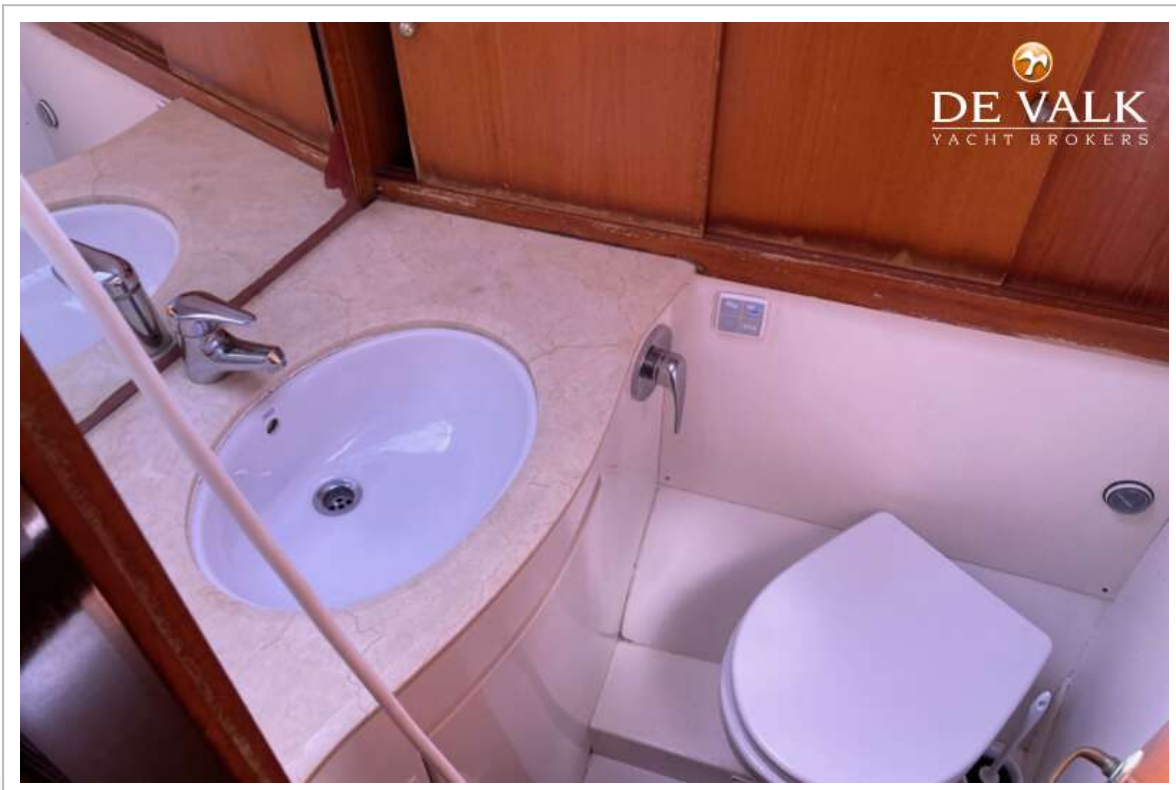


# NORTH WIND 50





# NORTH WIND 50



# NORTH WIND 50

