



DE VALK  
YACHT BROKERS



## CAMMENGA 61 NORTH SEA TRAWLER



DE VALK  
YACHT BROKERS

# CAMMENGA 61 NORTH SEA TRAWLER

## BROKER'S COMMENTS

"MY/Hunter", a true example of a traditional steel motor yacht designed by DeVries Lentch and built by Cammenga in Holland, transformed into a completely new look! With her striking baby blue hull, topped by her white superstructure maintains the look of a traditional trawler. A reliable spacious trawler to cruise in style powered by a robust Gardner diesel engine. She meets everything you need at sea and ocean. For those who are looking for a Fancy-Classic, she can be seen in Southern Turkish Riviera in Bodrum.

*Reinier van der Wolf*

## SPECIFICATIONS

<b>Dimensions</b>	18.60 x 4.75 x 1.90 (m)	<b>Builder</b>	Cammenga's Jacht-en Scheepswerf
<b>Built</b>	1967	<b>Cabins</b>	3
<b>Material</b>	Steel	<b>Berths</b>	6
<b>Engine(s)</b>	1 x Gardner diesel	<b>Hp/Kw</b>	172.00 (hp), 126.59 (kw)
<b>Asking price</b>	€ 1.050.000 (VAT Paid)	<b>Lying</b>	elsewhere / Not at sales office

## CONTACT

<b>Sales office</b>	De Valk Monnickendam	<b>Telephone</b>	+31 299 65 63 50
<b>Address</b>	Hoogedijk 6 1145 PM Katwoude The Netherlands	<b>E-mail</b>	monnickendam@devalk.nl

## DISCLAIMER

These particulars are given in good faith as supplied but cannot be guaranteed.



# CAMMENGA 61 NORTH SEA TRAWLER

## GENERAL

<b>Model</b>	CAMMENGA 61 NORTH SEA TRAWLER
<b>Type</b>	motor yacht
<b>LOA (m)</b>	18,60
<b>Beam (m)</b>	4,75
<b>Draft (m)</b>	1,90
<b>Year built</b>	1967
<b>Builder</b>	Cammenga's Jacht-en Scheepswerf
<b>Country</b>	The Netherlands
<b>Designer</b>	De Vries Lentsch
<b>Displacement (t)</b>	37
<b>Hull material</b>	steel
<b>Hull colour</b>	blue - (Baby-Blue)
<b>Hull shape</b>	round-bilged
<b>Superstructure material</b>	steel
<b>Deck material</b>	steel
<b>Deck finish</b>	teak - 5 mm.
<b>Cockpit deck finish</b>	teak
<b>Antifouling (year)</b>	2023
<b>Dorades</b>	6x
<b>Window frame</b>	aluminium
<b>Window material</b>	glass
<b>Deckhatch</b>	3x
<b>Portholes</b>	yes
<b>Fuel tank (litre)</b>	3900
<b>Freshwater tank (litre)</b>	750
<b>Blackwater tank (litre)</b>	750
<b>Wheel steering</b>	+ electronic joystick helm system
<b>Inside helm position</b>	yes
<b>More info on hull</b>	Coppercoat has been applied (3 years from 02-06-2023)



# CAMMENGA 61 NORTH SEA TRAWLER

## ACCOMMODATION

<b>Cabins</b>	3
<b>Berths</b>	6
<b>Layout</b>	1st cabin: on the bow head and shower with a 3-person bathroom and WC next to the galley (guest room) 2. cabin: 3 person vip cabin including bathroom and wc on starboard bow 3. cabin: Stateroom including WC and bathroom to the port right after stairs to galley A total of 8 people can sleep (Starboard and port pull-out bunk beds available )
<b>Saloon</b>	upholstery renewed, furnitures painted
<b>Air-conditioning</b>	yes
<b>Chart table</b>	yes
<b>Aft Cabin</b>	yes
<b>Galley</b>	yes
<b>Countertop</b>	yes
<b>Sink</b>	stainless steel
<b>Cooker</b>	4 burners
<b>Oven</b>	yes
<b>Microwave</b>	yes
<b>Fridge</b>	yes
<b>Hot water system</b>	yes
<b>Water pressure system</b>	electrical
<b>Dishwasher</b>	yes
<b>Owners cabin</b>	French bed
<b>Wardrobe</b>	hanging/drawers/shelves
<b>Bathroom</b>	en suite
<b>Toilet</b>	en suite
<b>Toilet system</b>	electric
<b>Wash basin</b>	yes
<b>Shower</b>	yes
<b>Guest cabin 1</b>	double bed
<b>Wardrobe</b>	hanging and drawers
<b>Toilet</b>	en suite



# CAMMENGA 61 NORTH SEA TRAWLER

Wash basin	yes
Guest cabin 2	bunk bed
Wardrobe	drawers and shelves
Bathroom	yes
Toilet	yes
Wash basin	yes
Ironing facilities	yes
Extra info	all showers and toilets have been renewed.

## MACHINERY

No of engines	1
Make	Gardner
HP	172
kW	126.59
Fuel	diesel
Maximum speed (kn)	10
Cruising speed (kn)	8
Engine hours	5700
Engine cooling system	freshwater heat exchanger
Drive	shaft
Engine controls	electrical
Gearbox	yes
Bowthruster	yes
Electrical installation	12v / 24v / 220v
Generator	Mase
Batteries	4x 4500 Watt Mastervolt Lithium
Battery charger	yes
Inverter	yes
Solar panel	5x (2000W)
Shorepower	with cable
Watermaker	yes



# CAMMENGA 61 NORTH SEA TRAWLER

<b>Stabilizers</b>	fin Koop-Nautic
<b>Trimtabs</b>	yes
<b>Extra info</b>	new leather dashboard + helm chair

## NAVIGATION

<b>Depth sounder</b>	yes
<b>Windset</b>	yes
<b>VHF</b>	yes
<b>Autopilot</b>	yes
<b>Radar</b>	yes
<b>Plotter</b>	yes
<b>Camera</b>	8x : engine, bow, Lazarette, starboard, port hull and aft.

## EQUIPMENT

<b>Bimini</b>	yes
<b>Cockpit cushions</b>	yes
<b>Boarding ladder</b>	Ship side
<b>Gangway</b>	Hydraulic After
<b>Anchor</b>	yes
<b>Chain counter</b>	yes
<b>Windlass</b>	electrical 2000w
<b>Dinghy</b>	3.5 M NOVURANIA
<b>Outboard</b>	yes
<b>Life raft</b>	yes
<b>Life raft (pers)</b>	8
<b>Fenders</b>	yes
<b>Mooring lines</b>	yes
<b>Surround Sound System</b>	cockpit, bow, aft, indoors Bose 5 Zone
<b>Extra info</b>	underwater lighting



## RIGGING

### Extra info

Original mast, boom and sails have been taken off and kept in storage, to be delivered to her new owner.



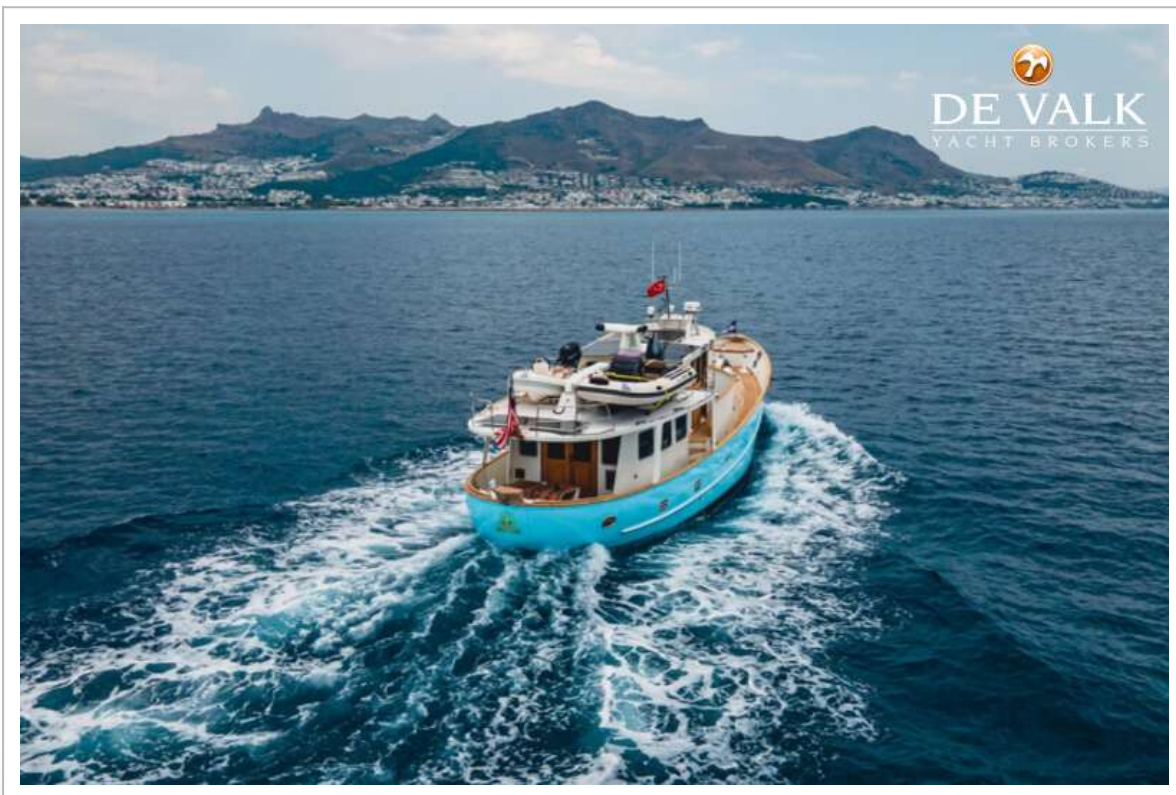


# CAMMENGA 61 NORTH SEA TRAWLER





# CAMMENGA 61 NORTH SEA TRAWLER

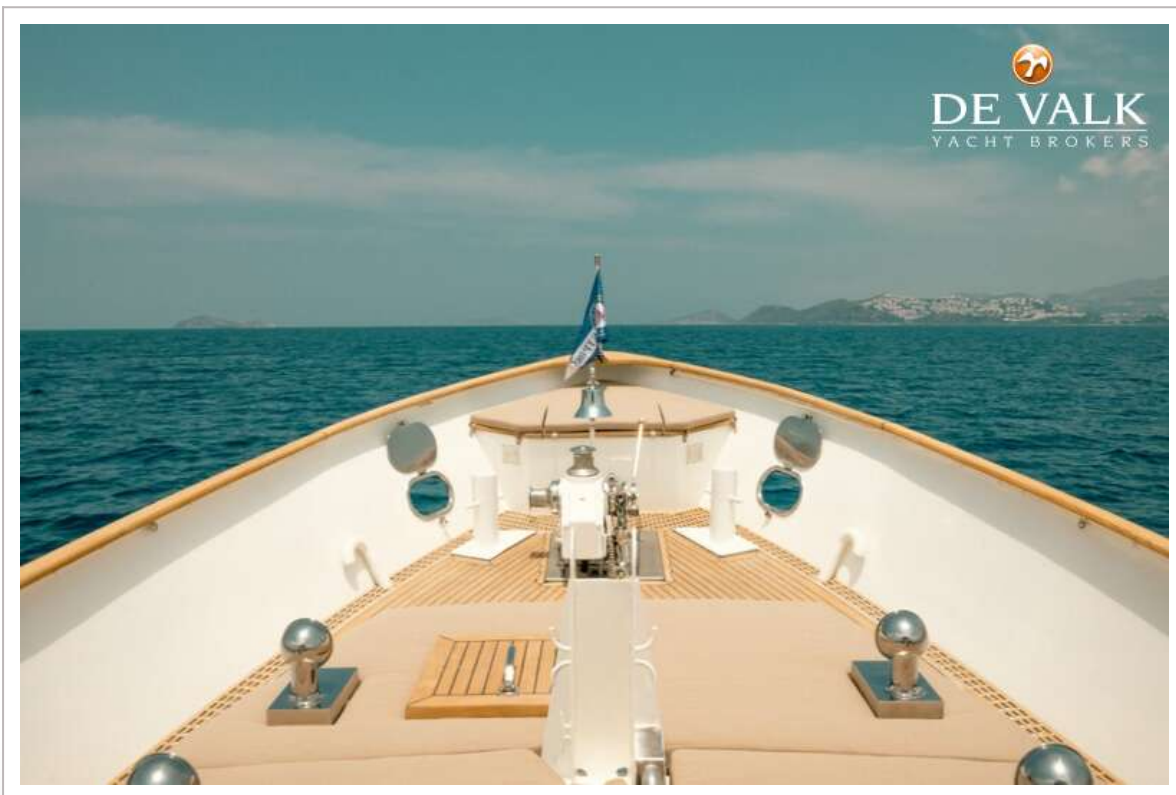




# CAMMENGA 61 NORTH SEA TRAWLER

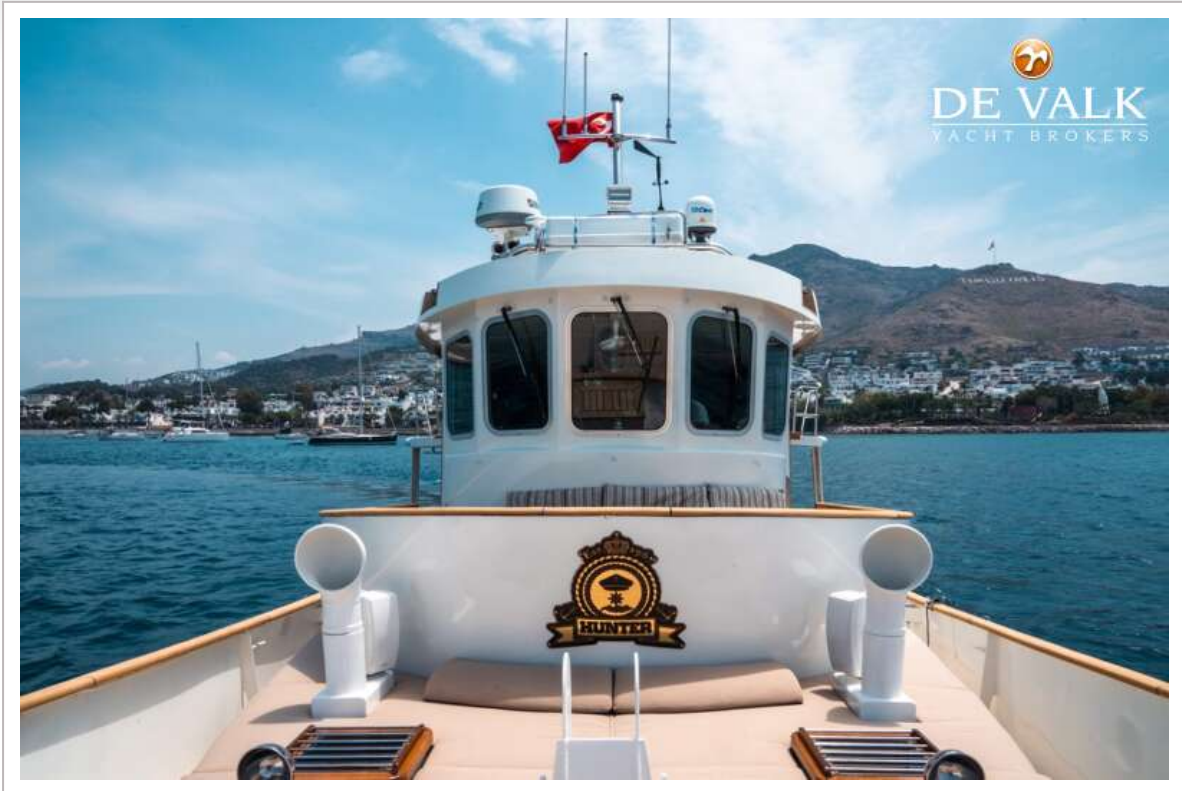


# CAMMENGA 61 NORTH SEA TRAWLER





# CAMMENGA 61 NORTH SEA TRAWLER

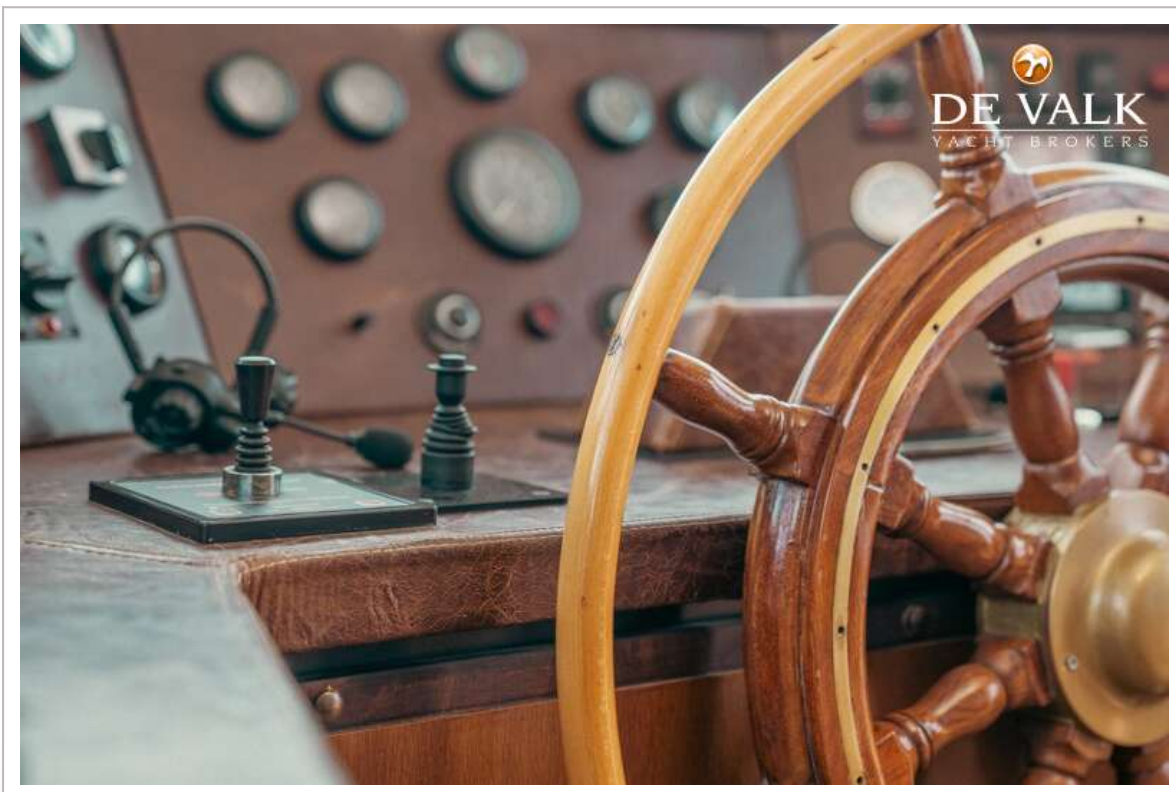
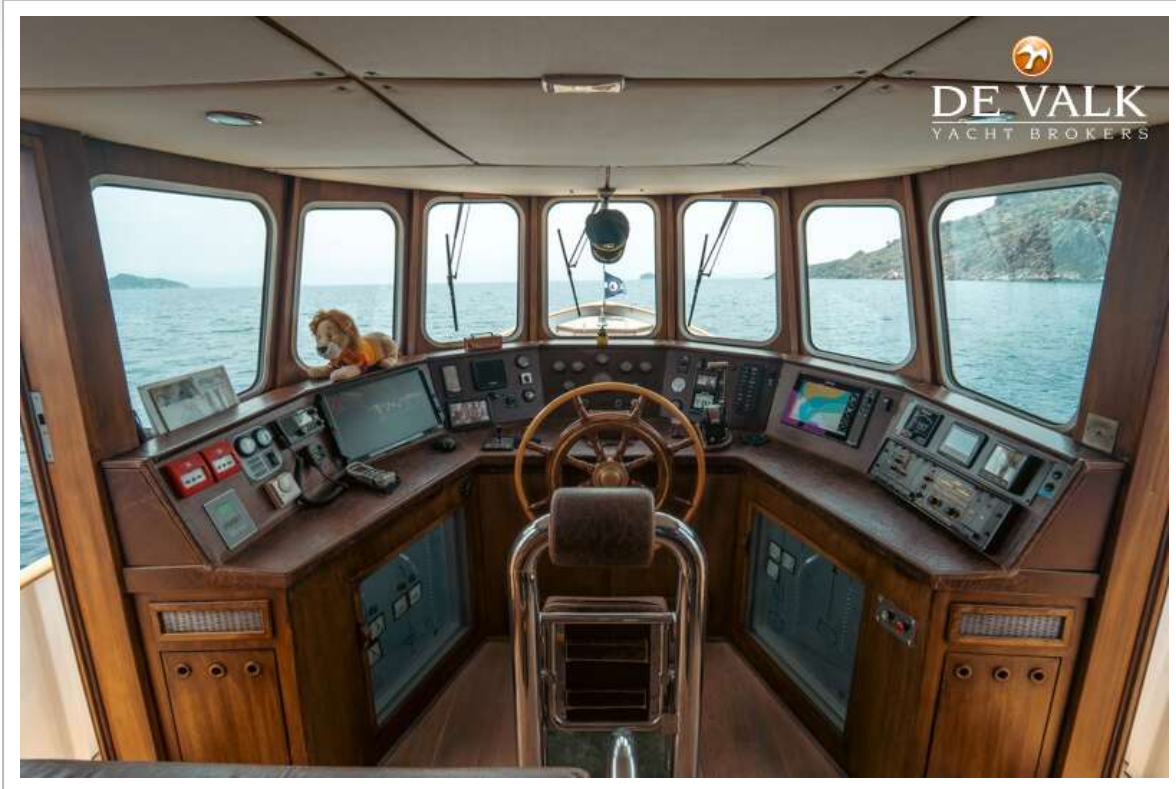


# CAMMENGA 61 NORTH SEA TRAWLER

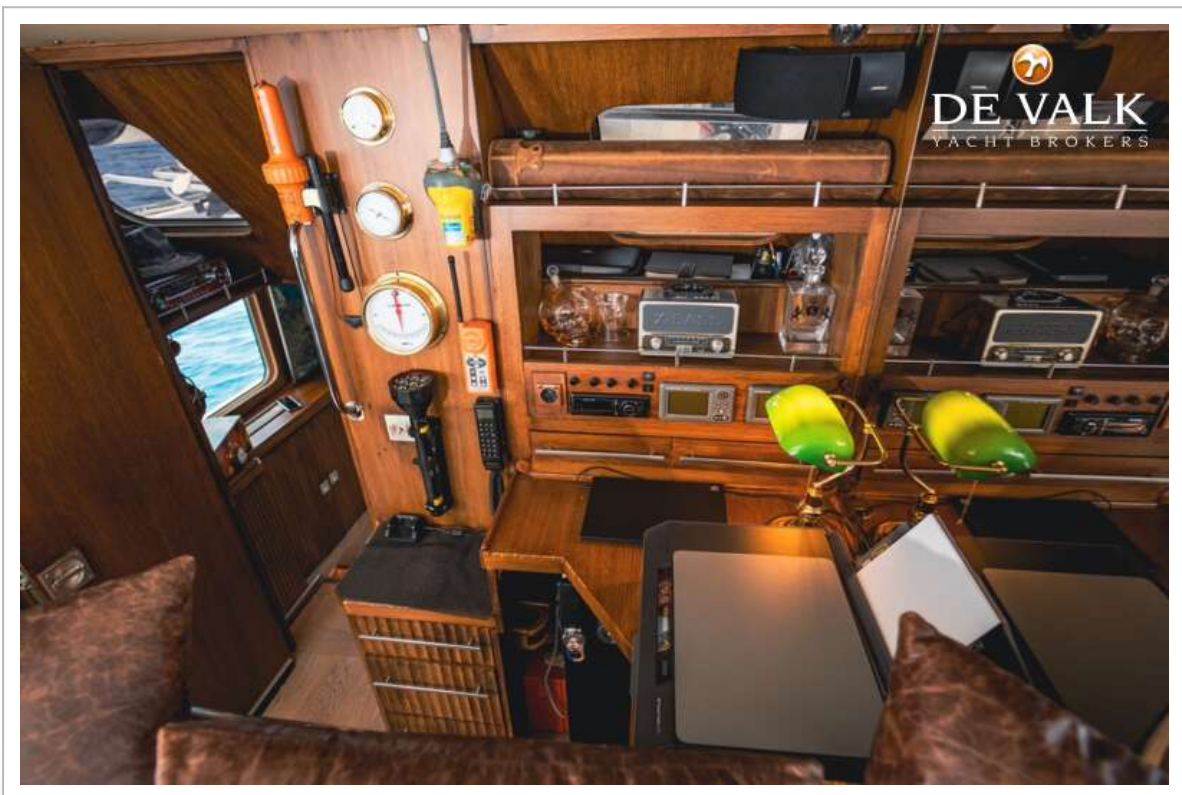
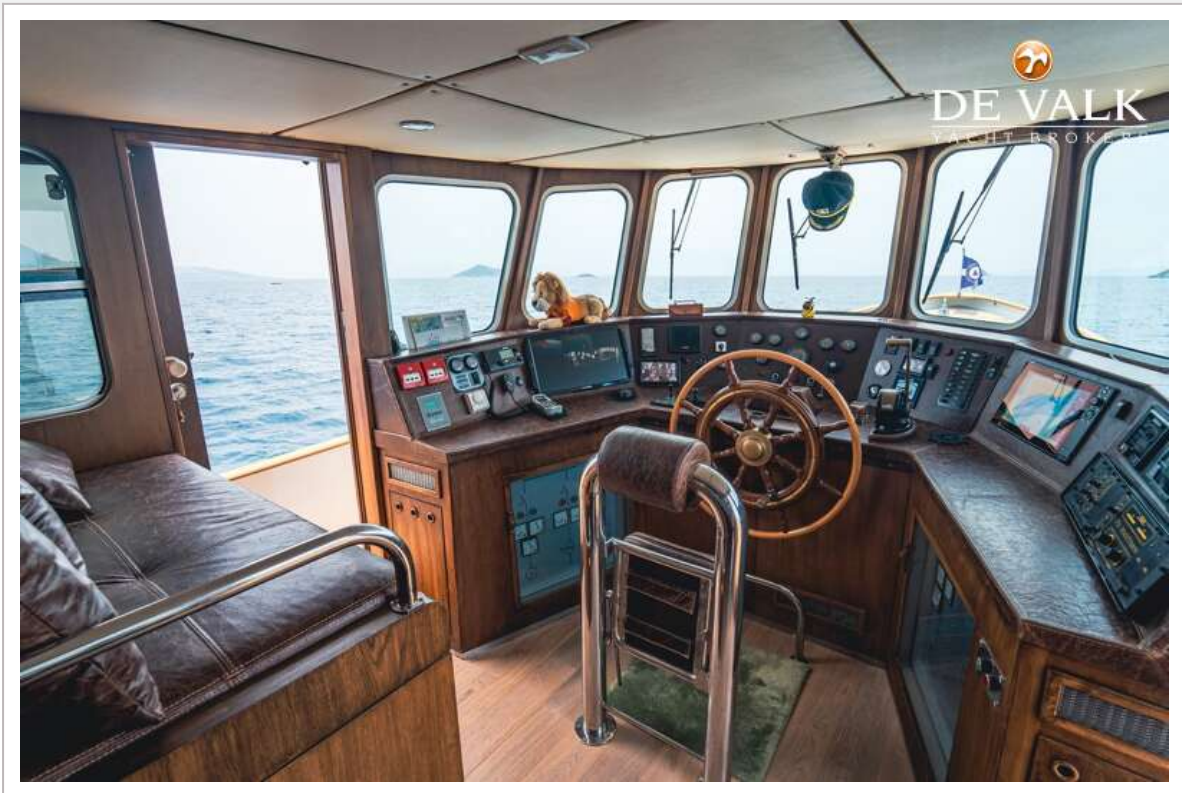




# CAMMENGA 61 NORTH SEA TRAWLER

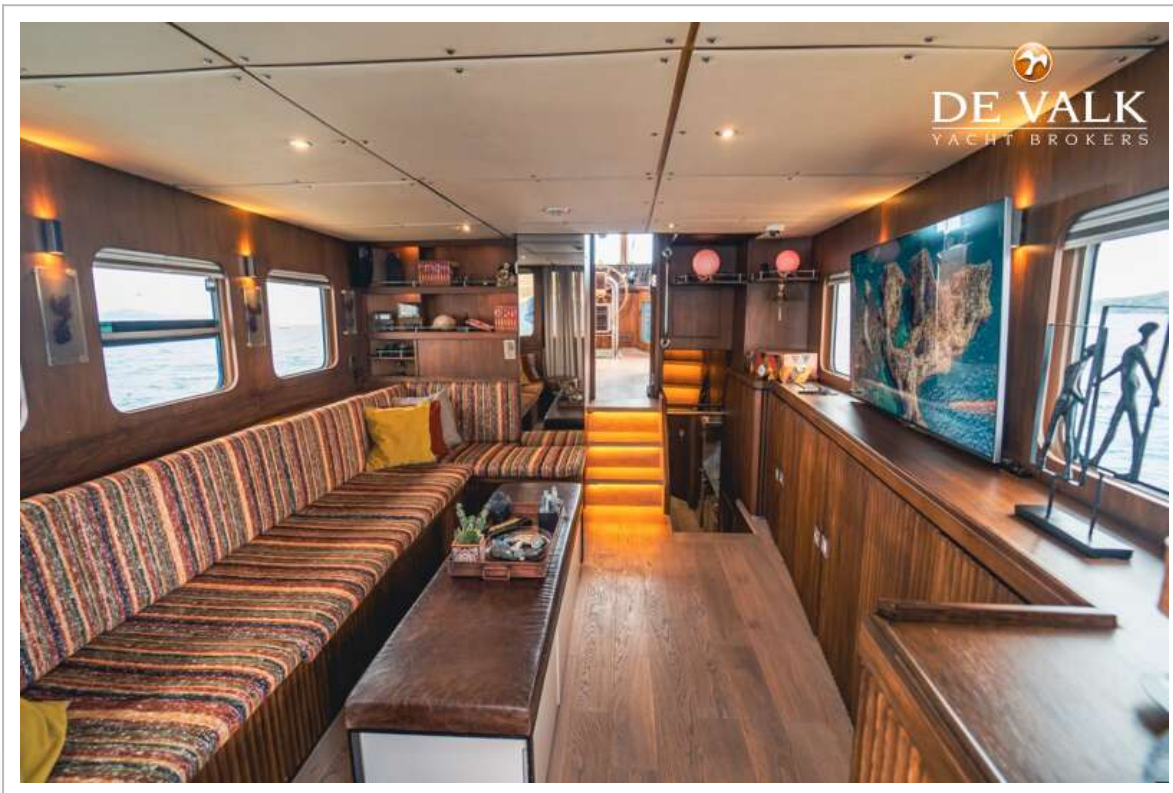


# CAMMENGA 61 NORTH SEA TRAWLER

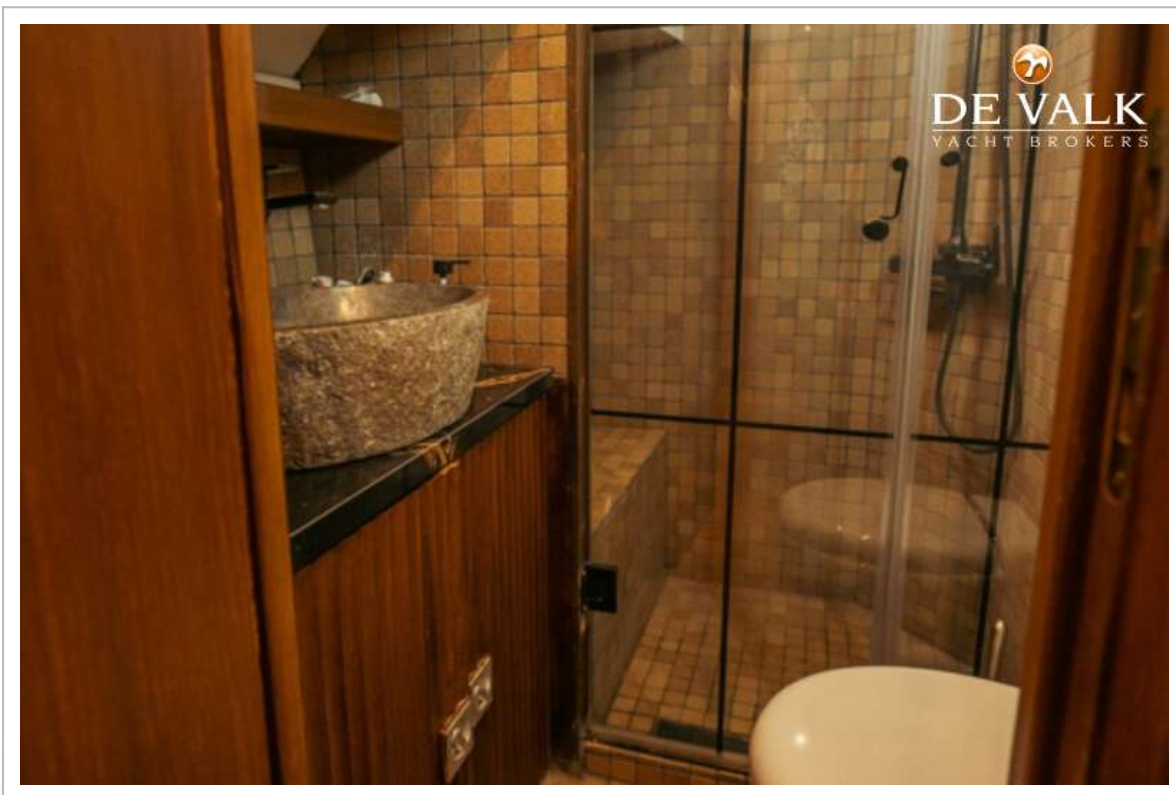




# CAMMENGA 61 NORTH SEA TRAWLER



# CAMMENGA 61 NORTH SEA TRAWLER



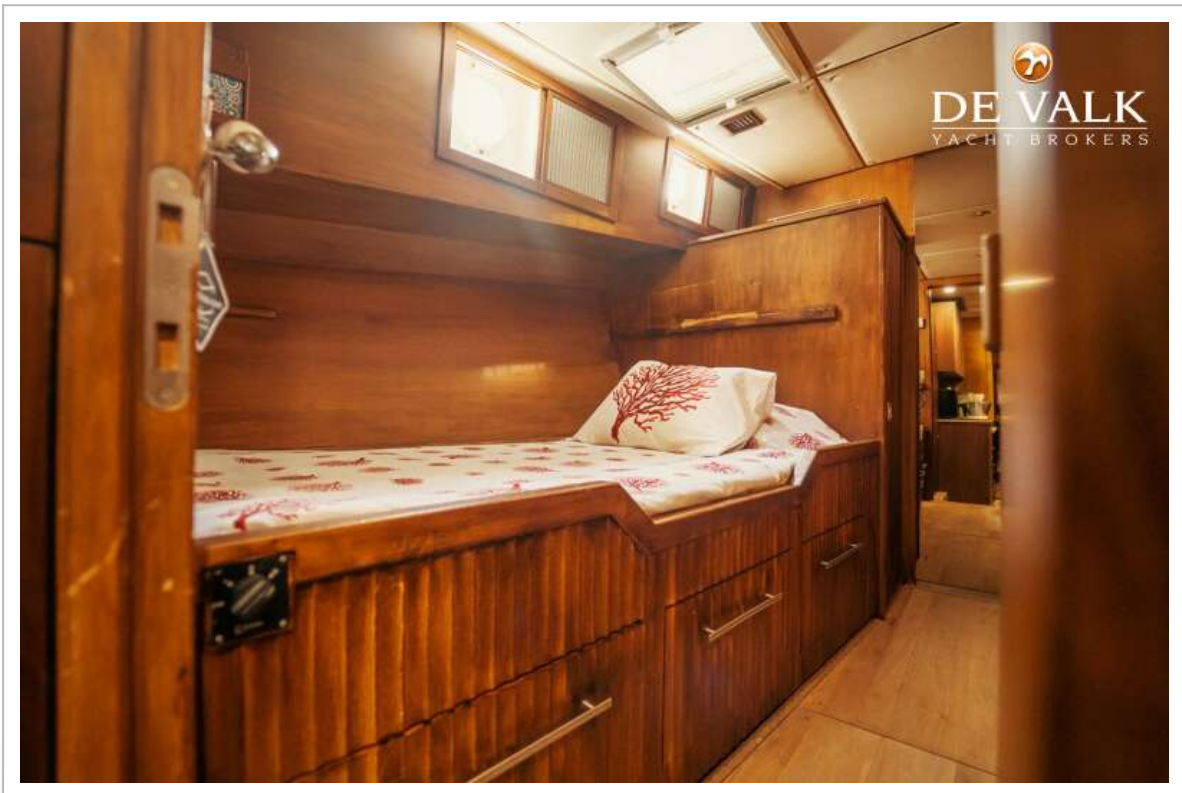


# CAMMENGA 61 NORTH SEA TRAWLER

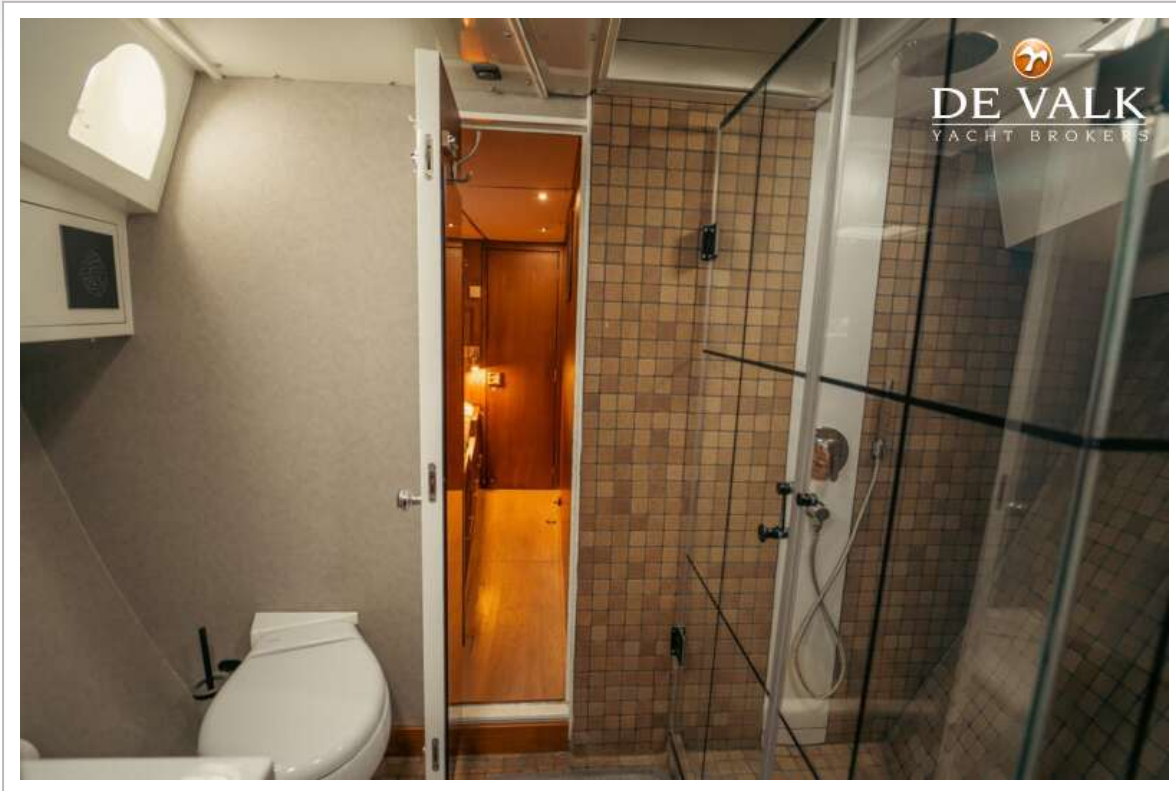




# CAMMENGA 61 NORTH SEA TRAWLER

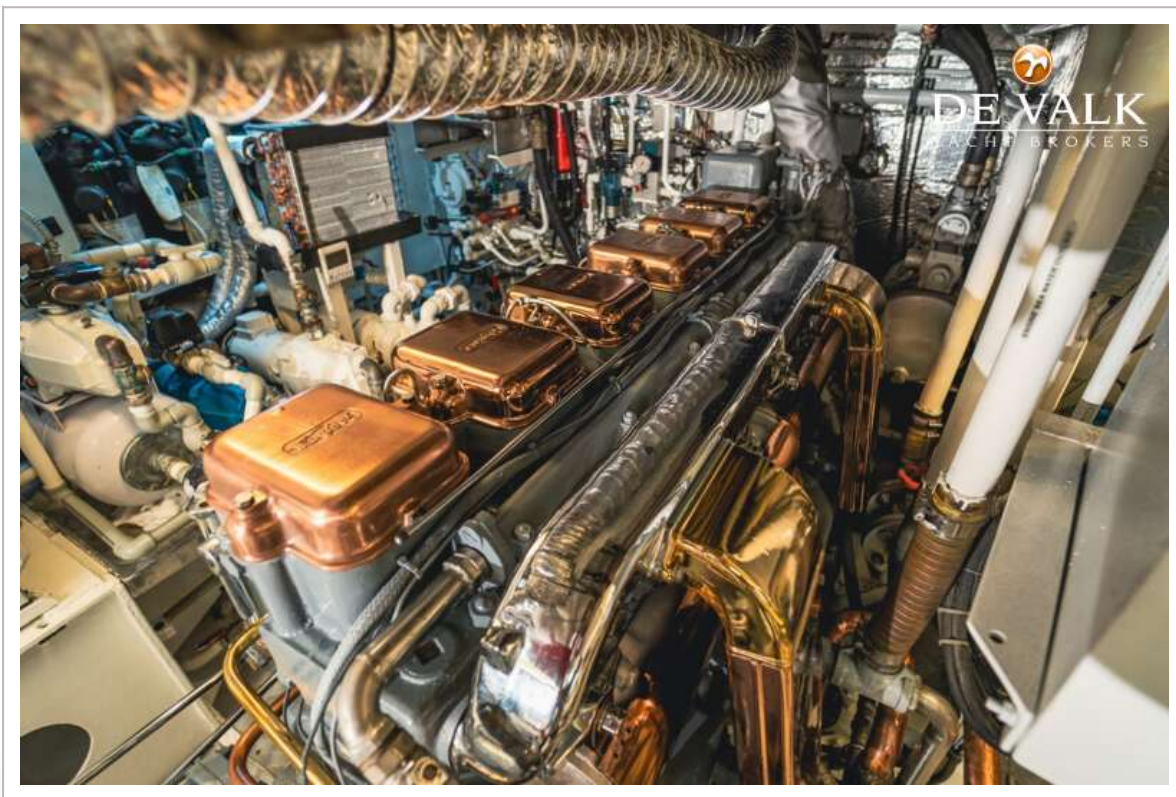


# CAMMENGA 61 NORTH SEA TRAWLER





# CAMMENGA 61 NORTH SEA TRAWLER





# CAMMENGA 61 NORTH SEA TRAWLER

