



DE VALK
YACHT BROKERS



JAN VAN GENT 10.35 SOFT TOP



DE VALK
YACHT BROKERS

JAN VAN GENT 10.35 SOFT TOP

BROKER'S COMMENTS

This newly received Jan van Gent 10.35 soft-top is ready to enjoy this summer immediately! She is from the second owner who has put at least as much love into it as the first owner. This Jan van Gent is in very good condition and has had necessary upgrades over the years. Things that have been added include; a raised hood for more headroom inside, new inverter and custom made toppers for a comfortable overnight stay. Her 315 hp Yanmar diesel engine gives great cruising performance. The engine has recently had a service. She is moored at our office in Loosdrecht.

Julian de Heer

SPECIFICATIONS

| | | | |
|---------------------|----------------------------|----------------|--------------------------|
| Dimensions | 10.35 x 3.30 x 0.85 (m) | Builder | Jan van Gent |
| Built | 2004 | Cabins | 1 |
| Material | GRP | Berths | 2 |
| Engine(s) | 1 x Yanmar 6LPA-STP diesel | Hp/Kw | 315.00 (hp), 231.84 (kw) |
| Asking price | sold (VAT) | Lying | at sales office |

CONTACT

| | | | |
|---------------------|----------------------------------------------------------------------------------|------------------|----------------------|
| Sales office | De Valk Loosdrecht | Telephone | +31 35 582 90 30 |
| Address | 't Breukeleveense Meentje 6 1231 LM Loosdrecht / Wijdmeren The Netherlands | E-mail | loosdrecht@devalk.nl |

DISCLAIMER

These particulars are given in good faith as supplied but cannot be guaranteed.



JAN VAN GENT 10.35 SOFT TOP

GENERAL

| | |
|------------------------------------|-------------------------------|
| Model | JAN VAN GENT 10.35 SOFT TOP |
| Type | motor yacht |
| LOA (m) | 10,35 |
| LWL (m) | 9,50 |
| Beam (m) | 3,30 |
| Draft (m) | 0,85 |
| Year built | 2004 |
| Builder | Jan van Gent |
| Country | The Netherlands |
| Displacement (t) | 4,5 |
| CE norm | C |
| Hull material | GRP |
| Hull colour | beige |
| Hull shape | round-bilged |
| Rubbing strake | fender rope |
| Deck material | GRP |
| Deck finish | non-skid moulded in |
| Cockpit deck finish | teak |
| Antifouling (year) | yes |
| Fuel tank (litre) | stainless steel 210 |
| Level indicator (fuel tank) | yes |
| Freshwater tank (litre) | stainless steel 70 |
| Outside helm position | hydraulic With raised cushion |
| Extra info | Stainless steel bolders |

ACCOMMODATION

| | |
|-----------------|------|
| Cabins | 1 |
| Berths | 2 |
| Interior | teak |
| Floor | teak |



JAN VAN GENT 10.35 SOFT TOP

| | |
|-----------------------|----------------------------------------------------------|
| Open cockpit | yes |
| Heating | diesel ducted hot air Webasto |
| Convertible berth | With 2 new Seminautic toppers including sheet set (2023) |
| Galley | yes |
| Countertop | wood |
| Sink | stainless steel |
| Fridge | Eismann |
| Hot water system | 220V + engine Boiler 40 liter |
| Water pressure system | electrical |
| Toilet | separate Jabsco |
| Toilet system | electric |

MACHINERY

| | |
|--------------------------|---------------------------|
| No of engines | 1 |
| Make | Yanmar |
| Type | 6LPA-STP |
| HP | 315 |
| kW | 231.84 |
| Fuel | diesel |
| Engine hours | 1925 |
| Engine cooling system | freshwater heat exchanger |
| Drive | shaft |
| Engine controls | bowden cable |
| Gearbox | hydraulic |
| Propeller type | fixed Serviced in 2023 |
| Propeller blades | 4 |
| Propeller shaft material | stainless steel |
| Shaft lubrication | water |
| Electric bilge pump | yes |
| Start battery | Sportline 12V / 105Ah |
| Service battery | Bosch 12V / 230Ah |



| | |
|----------------------------|-------------------------------------------|
| Bowthruster battery | 12V / 55Ah |
| Battery charger | Mobitronic |
| Inverter | Whisperpower 12/2000 (new placed in 2020) |
| Shorepower | with cable |
| Extra info | Engine serviced 2023 - oil changed 2024 |
| Extra info | New impeller pump 2024 |
| Extra info | Timing belt replacement 2022 |

NAVIGATION

| | |
|----------------------|----------------|
| Compass | yes |
| Depth sounder | Raymarine ST40 |
| Plotter | IPad mount |

EQUIPMENT

| | |
|-------------------------|------------------------------------------------------|
| Sprayhood | Raised to 1.82 headroom (2020) |
| Bimini | yes |
| Winter cover | yes |
| Cockpit cushions | yes |
| Cockpit table | yes |
| Boarding ladder | stainless steel |
| Anchor | Mooring pen |
| Horn | air pressure |
| Fenders | yes |
| Mooring lines | yes |
| Radio | Sony radio-marine |
| Cockpit speakers | Sony XS-MP 61 MK2 6x speaker |
| Extra info | 1x original steering wheel |
| Extra info | All covers are present |
| Extra info | Extension spray hood including insect screens (2023) |



JAN VAN GENT 10.35 SOFT TOP



JAN VAN GENT 10.35 SOFT TOP



JAN VAN GENT 10.35 SOFT TOP



JAN VAN GENT 10.35 SOFT TOP



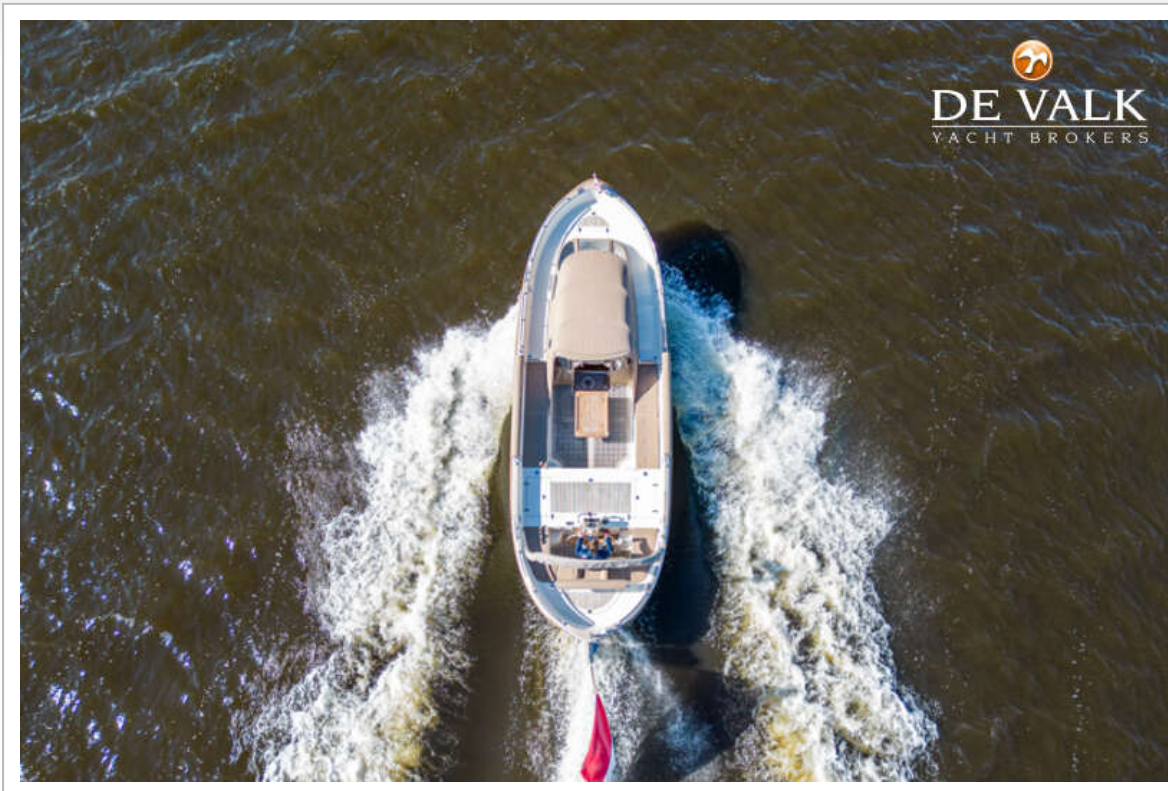
JAN VAN GENT 10.35 SOFT TOP



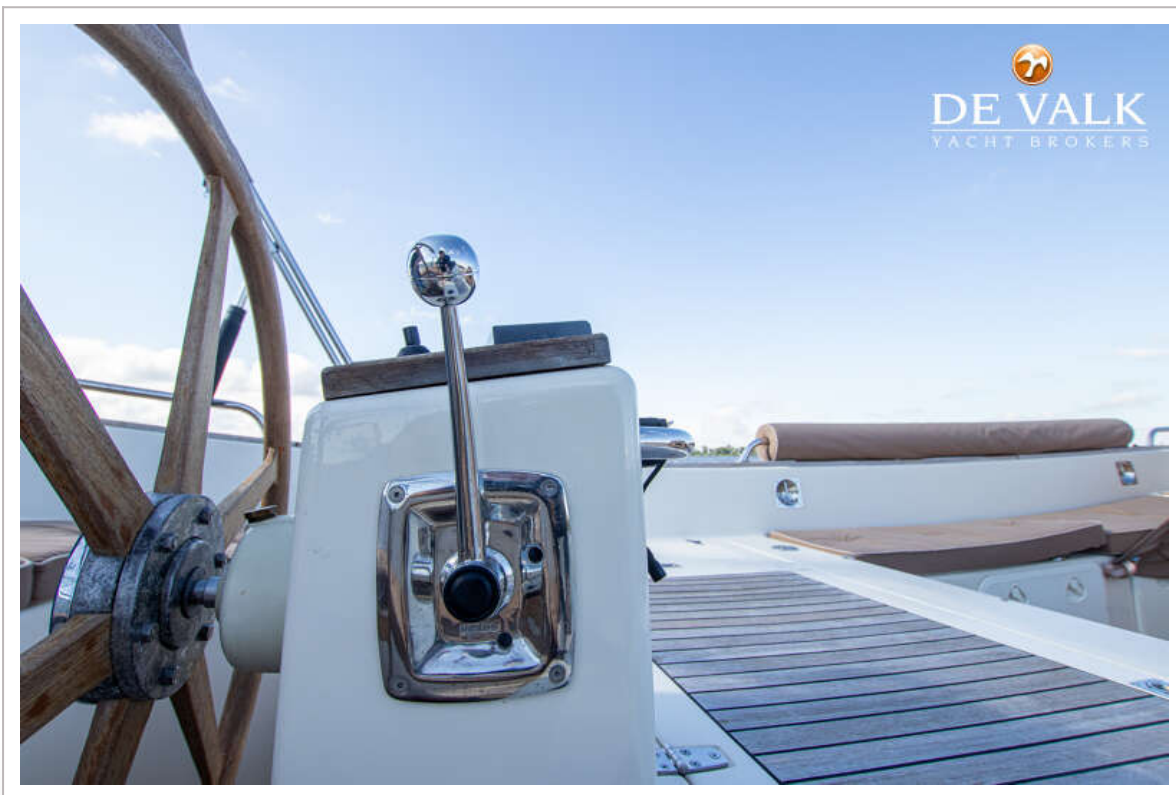
JAN VAN GENT 10.35 SOFT TOP



JAN VAN GENT 10.35 SOFT TOP



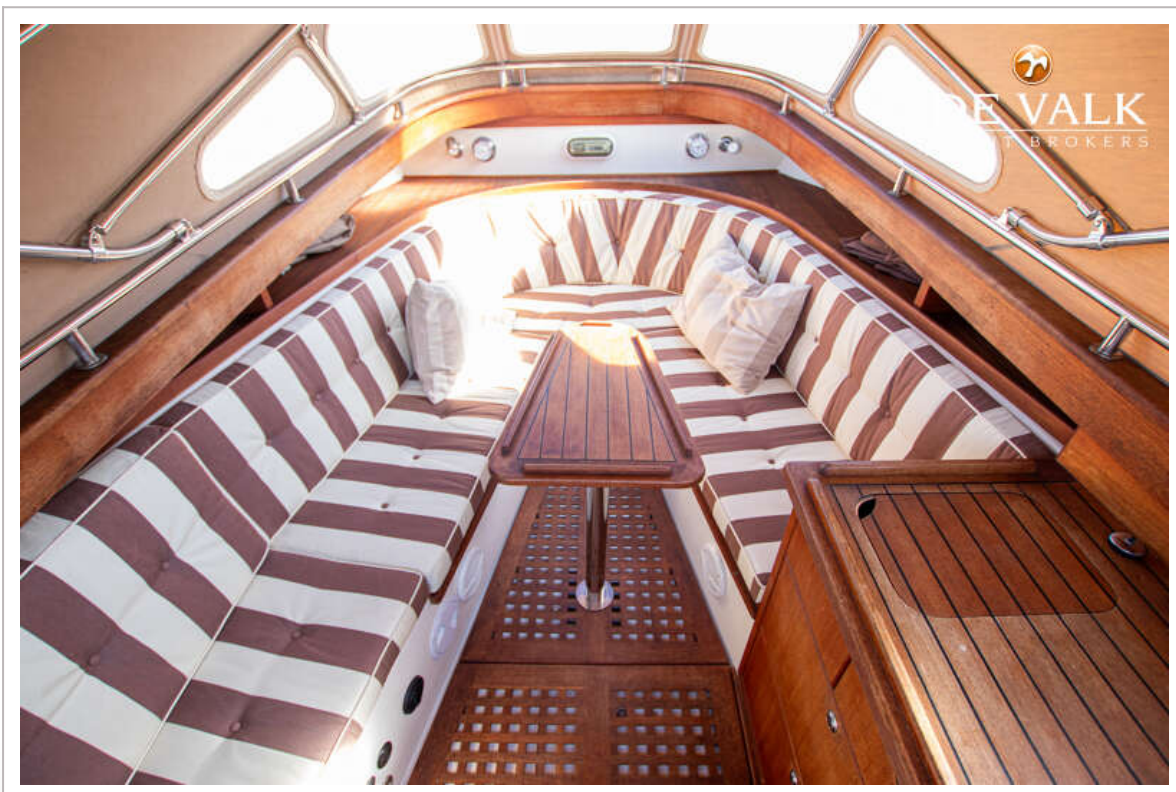
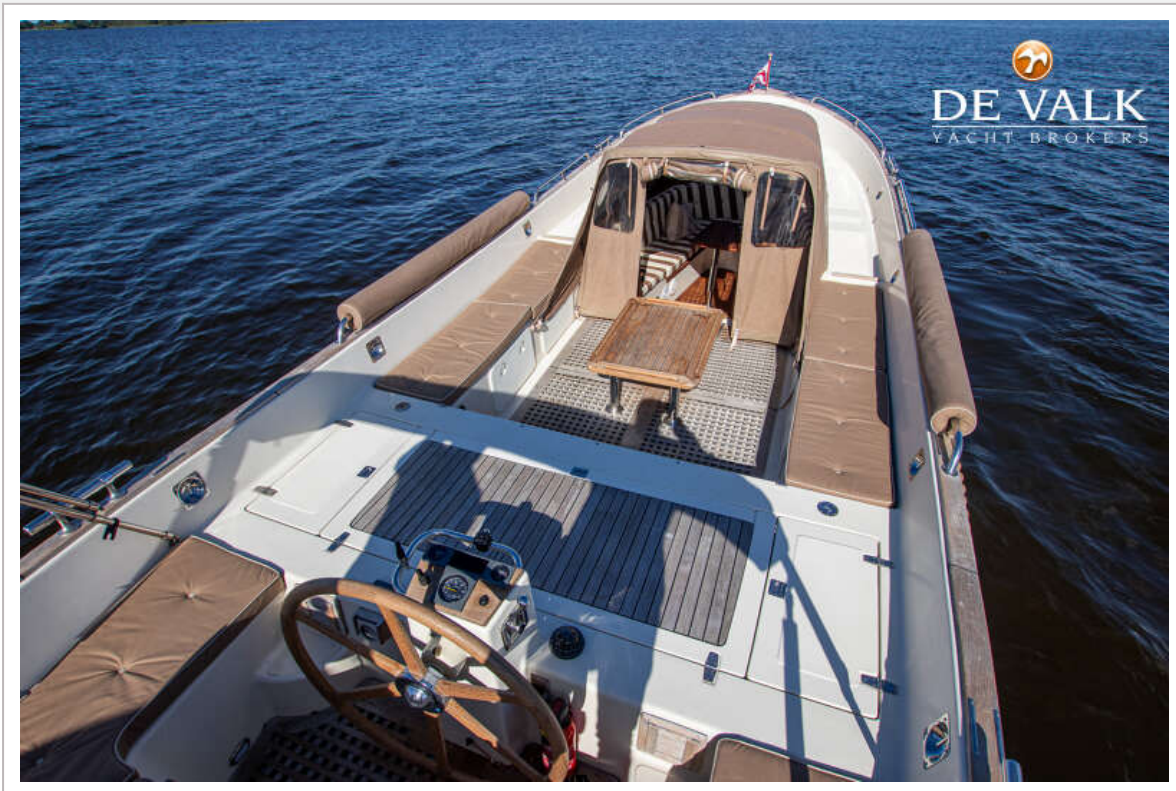
JAN VAN GENT 10.35 SOFT TOP



JAN VAN GENT 10.35 SOFT TOP



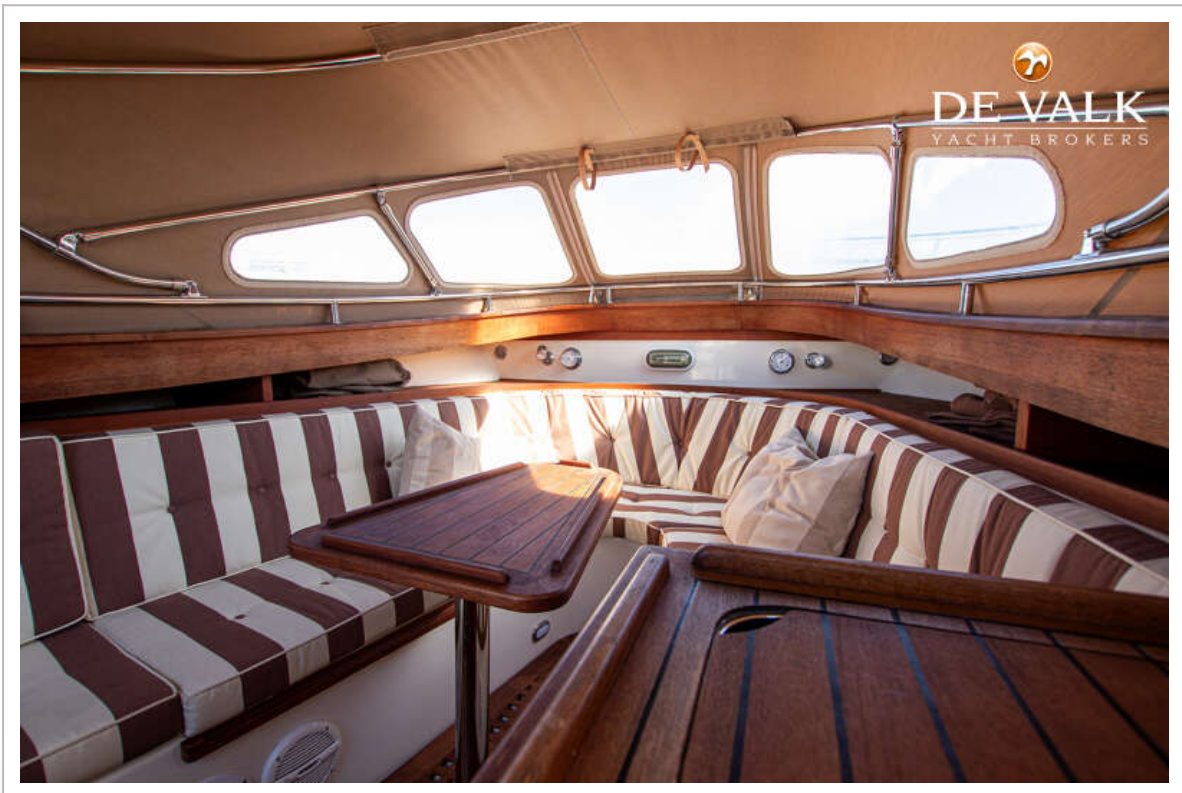
JAN VAN GENT 10.35 SOFT TOP



JAN VAN GENT 10.35 SOFT TOP

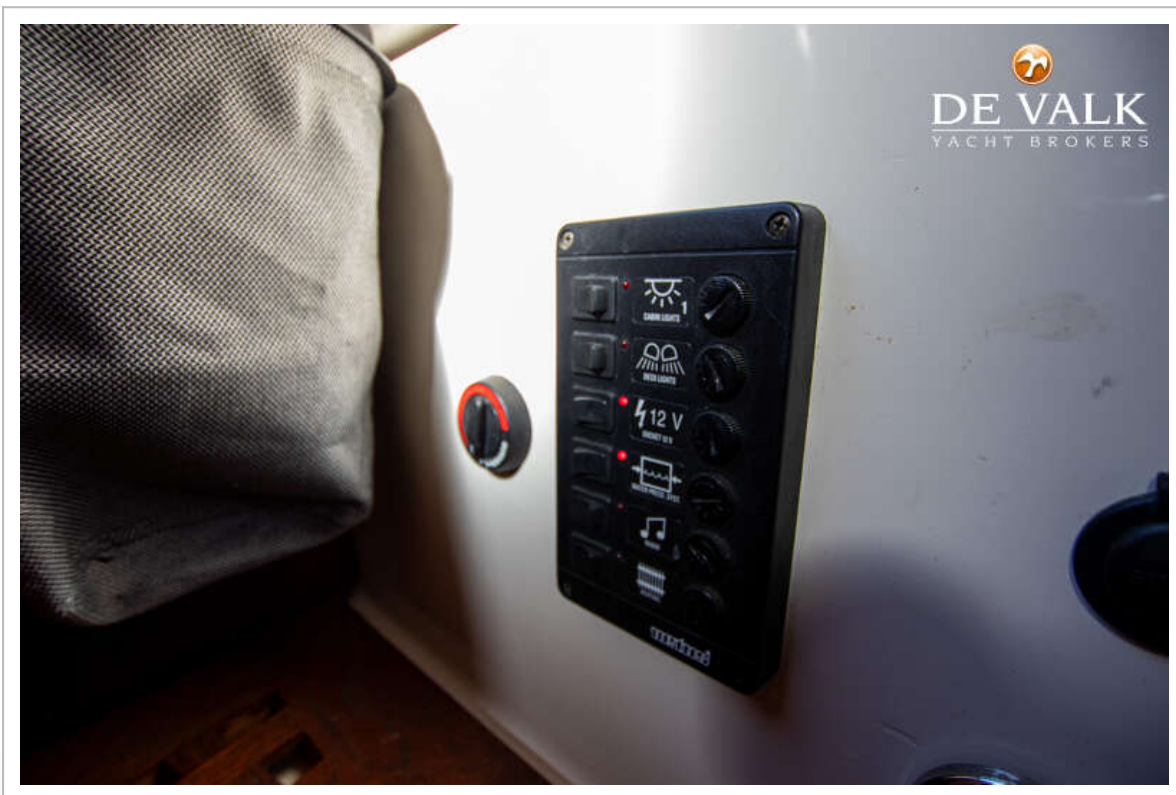


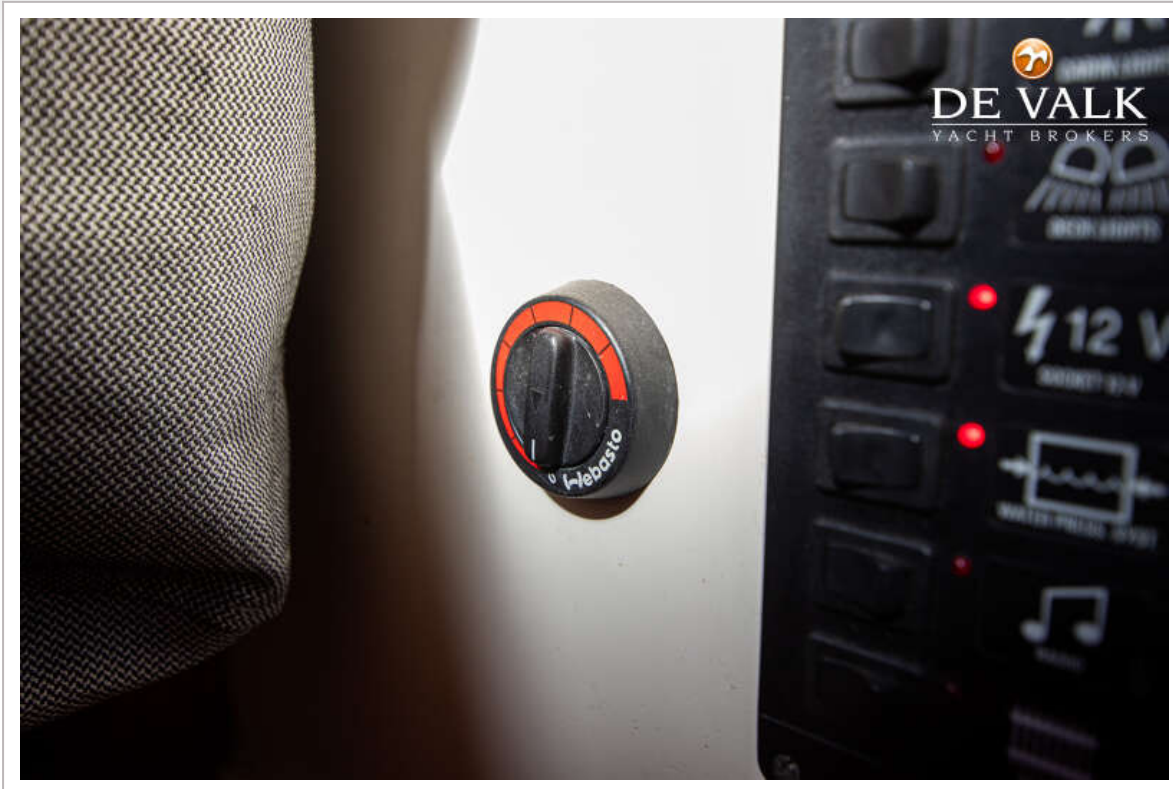
JAN VAN GENT 10.35 SOFT TOP



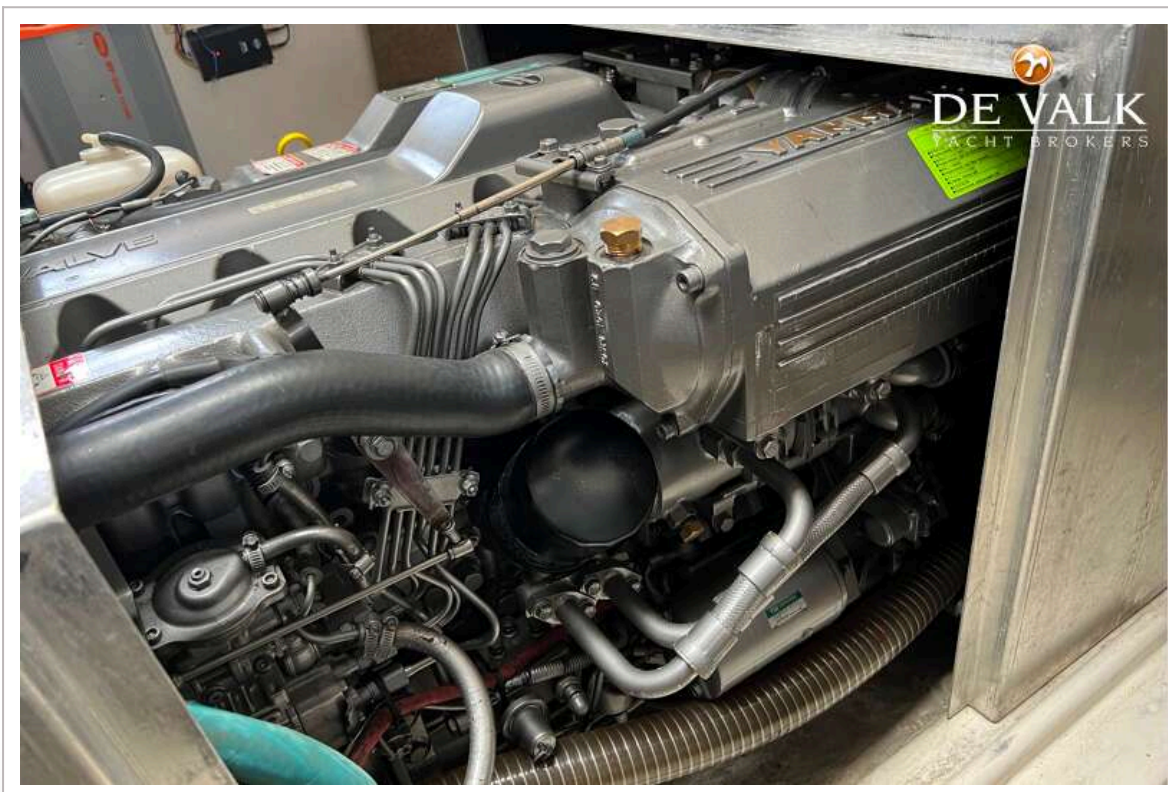
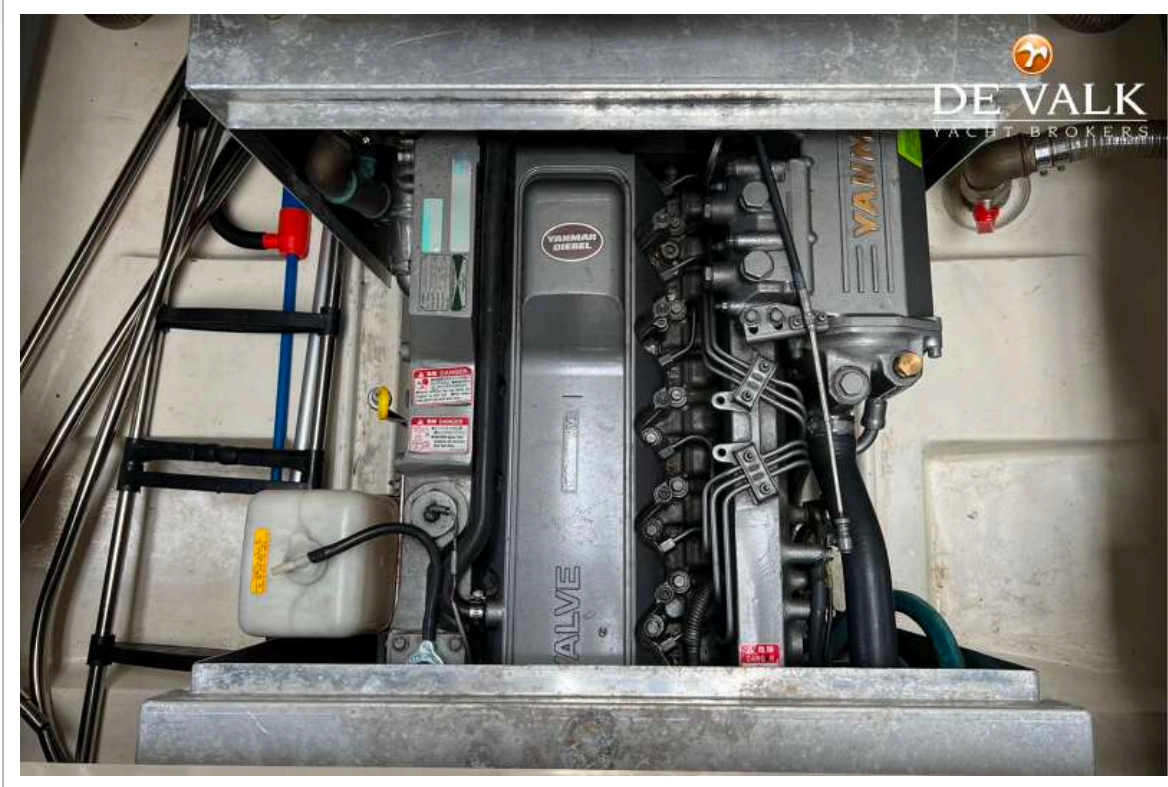
JAN VAN GENT 10.35 SOFT TOP







JAN VAN GENT 10.35 SOFT TOP



JAN VAN GENT 10.35 SOFT TOP



