



DE VALK
YACHT BROKERS



MOODY 376



DE VALK
YACHT BROKERS

BROKER'S COMMENTS

This Moody 376, built in 1990 (Plymouth, England) is designed by to be a timeless sailing ship, functional to go on long cruising or daily trips. She is extremely well maintained by previous owner. Very good engine and reliable rigging. You are welcome to make an appointment to visit her in Aguadulce, Spain

Jörg Hellmich

SPECIFICATIONS

Dimensions	11.53 x 3.81 x 1.68 (m)	Builder	Marine Projects LTD for Moody Yachts LTD
Built	1990	Cabins	3
Material	GRP	Berths	7
Engine(s)	1 x Thorneycroft T110 diesel	Hp/Kw	55 (hp), 40.48 (kw)
Asking price	€ 63.000 (VAT Paid)	Lying	contact Almeria

CONTACT

Sales office	De Valk Almeria	Telephone	+34 950 497 825
Address	Puerto de Almerimar Darsena de la Batea 1, No. 42, 04711 Almerimar Spain	E-mail	almeria@devalk.nl

DISCLAIMER

These particulars are given in good faith as supplied but cannot be guaranteed.



GENERAL

Model	MOODY 376
Type	sailing yacht
LOA (m)	11,53
LWL (m)	9,50
Beam (m)	3,81
Draft (m)	1,68
Air draft min (m)	15,77
Headroom (m)	1,86
Year built	1990
Builder	Marine Projects LTD for Moody Yachts LTD
Country	United Kingdom
Designer	Bill Dixon
Displacement (t)	7,37
Ballast (tonnes)	cast iron and lead 2,948
Gross tonnage	13,15
CE norm	NA
Hull material	GRP
Hull colour	white
Hull shape	V-shaped hull
Keel type	fin keel
Superstructure material	GRP
Deck material	GRP
Deck finish	non-skid paint
Superstructure deck finish	non-skid paint
Cockpit deck finish	teak Sole replaced 2013
Antifouling (year)	2022
Dorades	2
Window frame	aluminium
Window material	polycarbonate
Deckhatch	With mosquito nets



Portholes	aluminium
Fuel tank (litre)	stainless steel 200 (new 2013)
Level indicator (fuel tank)	Gauge
Freshwater tank (litre)	polyethylene 250
Level indicator (freshwater)	Gauge
Blackwater tank (litre)	polyethylene 100 (fitted 2023)
Level indicator (blackwater)	yes
Blackwater tank extraction	pump
Wheel steering	cable steering
Outside helm position	yes
Emergency tiller	yes
More info on hull	Hull epoxied by first owner. Stripped back and reprimed 2013.

ACCOMMODATION

Cabins	3
Berths	7
Interior	teak
Layout	2 cabins + pilot berth
Floor	wood Refurbished and revarnished (2012)
Saloon	With 'L' shape seating and setee opposite, central table
Headroom saloon (m)	1,88
Heating	diesel ducted hot air
Chart table	yes
Aft Cabin	Additional drawer storage created (2012)
Convertible berth	In saloon
Galley	U-shape
Countertop	corian
Sink	stainless steel Double
Cooker	calor gas Neptune 2000 - 2 burner
Oven	New plastimo "Neptune" (2005) - Last serviced (2017) Gas oven
Gas alarm	yes



Microwave	yes
Fridge	yes
Freezer	(icebox)
Hot water system	220V + engine Boiler
Water pressure system	electrical New pump 2015
Kettle	yes
Hot water tap	yes
Crockery	yes
Owners cabin	double bed New upholstery and foam (2012) and new curtains (2012)
Bed length (m)	2,3 0x 1,50 (enlarged)
Wardrobe	hanging/drawers/shelves More storage created in 2012
Toilet	en suite
Toilet system	manual Jabsco
Wash basin	at the toilet
Shower	en suite
Guest cabin 1	v-bed
Bed length (m)	1,90
Wardrobe	hanging and shelves
Toilet	en suite
Toilet system	manual Jabsco
Wash basin	at the toilet
Shower	en suite
Guest cabin 2	bunk bed Passage Berth midships STB
Bed length (m)	1,90
Wardrobe	hanging and shelves

MACHINERY

No of engines	1
Make	Thorneycroft
Type	T110



HP	55
kW	40.48
Fuel	diesel
Year installed	1990
Maximum speed (kn)	9
Cruising speed (kn)	5,5
Consumption (l/hr)	3
Engine cooling system	freshwater heat exchanger Sea water intake
Drive	shaft
Shaft seal	yes
Engine controls	bowden cable
Gearbox	hydraulic New (2012)
Exhaust	watercooled
Propeller type	fixed
Propeller blades	3
Propeller shaft material	stainless steel (New 2013)
Shaft lubrication	water
Manual bilge pump	New 2012
Electric bilge pump	New 2014
Bilge alarm	yes
Electrical installation	Extensive electrical system upgrades (2021) & rewiring in 2023
Start battery	1 x 12V / 75 Ah (new 06.2024)
Service battery	2 x 12V / 110 Ah (new 06.2024)
Battery monitor	BEP Monitor
Battery charger	Sterling Pro charge 20 (2021)
Solar panel	yes
Shorepower	with cable 230V
Extra info	New engine compartment insulation (2013)
Extra info	Service every 100 hrs

NAVIGATION



Compass	Plastimo 100
Electric compass	Raymarine
Depth sounder	Stowe Navsounder
Log	Stowe Navigator 1
Windset	Nasa Clipper Windspeed (2016)
VHF	Standard Horizon Digital Matrix AIS/GPS GX2200E (2021)
VHF handheld	Standard Horizon Digital GPS HX890E (2021)
Autopilot	Raymarine Smart Pilot ST6002 (2007)
Rudder angle indicator	Raymarine Smart Pilot
Radar	Furuno 1720
GPS	Garmin GPS 32
Plotter/GPS	Raymarine Axiom 12" (0.3) Multi Display connected to GPS+AIS
Electronic chart(s)	Navionics
AIS transceiver	Vesper XB-6000 AIS Transmitter/receiver (2021)
Radio receiver	yes
Transmitter	yes
EPIRB	McMurdo Smartfind G8 EPIRB/AIS (2021)
Navigation lights	yes

EQUIPMENT

Sprayhood	yes
Dodger	yes
Bimini	New 2012
Cockpit cushions	yes
Cockpit table	yes
Bathing platform	yes
Boarding ladder	stainless steel
Gangway	Aluminum
Anchor	Rocna Manson 35 lg
Anchor chain	30 +20 m (8mm)
Anchor 2	Danforth



Windlass	electrical Lofrans Royal (2017) Remote/foot control (2023)
Dinghy	inflatable Honwave 2,7m (2014)
Outboard	Honda 2,3HP (2014)
Outboard support	yes
Davits	stainless steel
Davits controls	manual
Sea railing	yes
Grab rail (superstructure)	teak
Pushpit	yes
Pulpit	yes
Life raft	container Saego Sea Cruiser (New 2020)
Life raft (pers)	6
Last life raft survey	05.2024
Lifejackets	6
Safety harness	4
Lifebuoy	1
Danbuoy	1
Safety lines on deck	2
Binocular	1
Radar reflector	1
Fenders	6
Mooring lines	6
Spare parts	Numerous
Tools	yes
Radio-cd player	Sony Bluetooth with Kenwood speakers
DVD player	yes
Cockpit speakers	yes
Speakers in salon	yes
Clock - barometer	yes
Fire extinguisher	5
Extinguisher in engine room	yes
Auto extinguisher system	yes

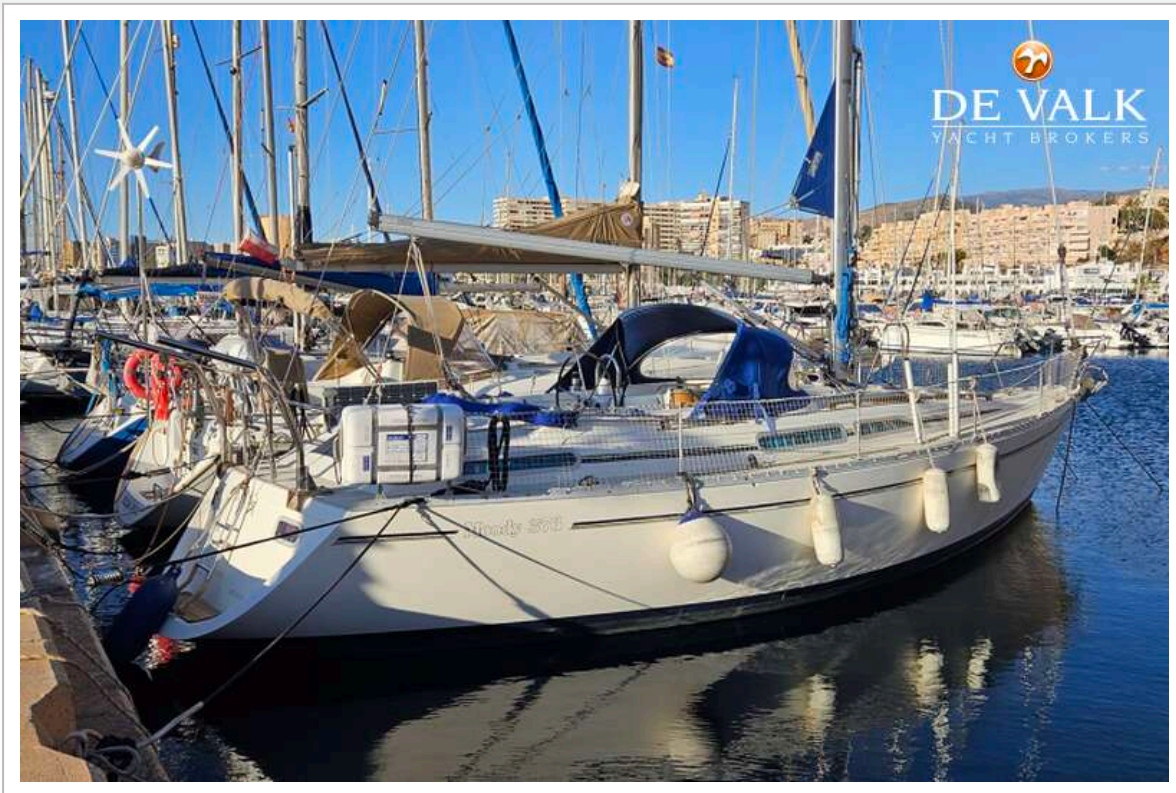


RIGGING

Rigging	sloop
Standing rigging	wire Replaced in 2005
Material mast	aluminium
Spreaders	2
Fully battened mainsail	with tensioned luff system. 'Maxiroach' vertically battened in-mast furling mainsail (2005)
Genoa	Ullmans (2015)
Genoa furler	yes
Staysail	yes
Reefing System	main in-mast furling
Backstay adjuster	tackle
Boomvang	mechanical and tackle
Genoa sheetwinches	2 x Lewmar 43" ST 2 SP
Halyard winches	1 x Lewmar 16" ST 2 SP
Spinnaker winch	1 x Lewmar 8" ST
Reefing winch	2 x Lewmar 16" ST (on mast)
Multifunctional winches	halyard/sheet winches 1 x Lewmar 14" ST 2 SP
Extra info	New Wichard Gybe preventer (2015)



MOODY 376



MOODY 376



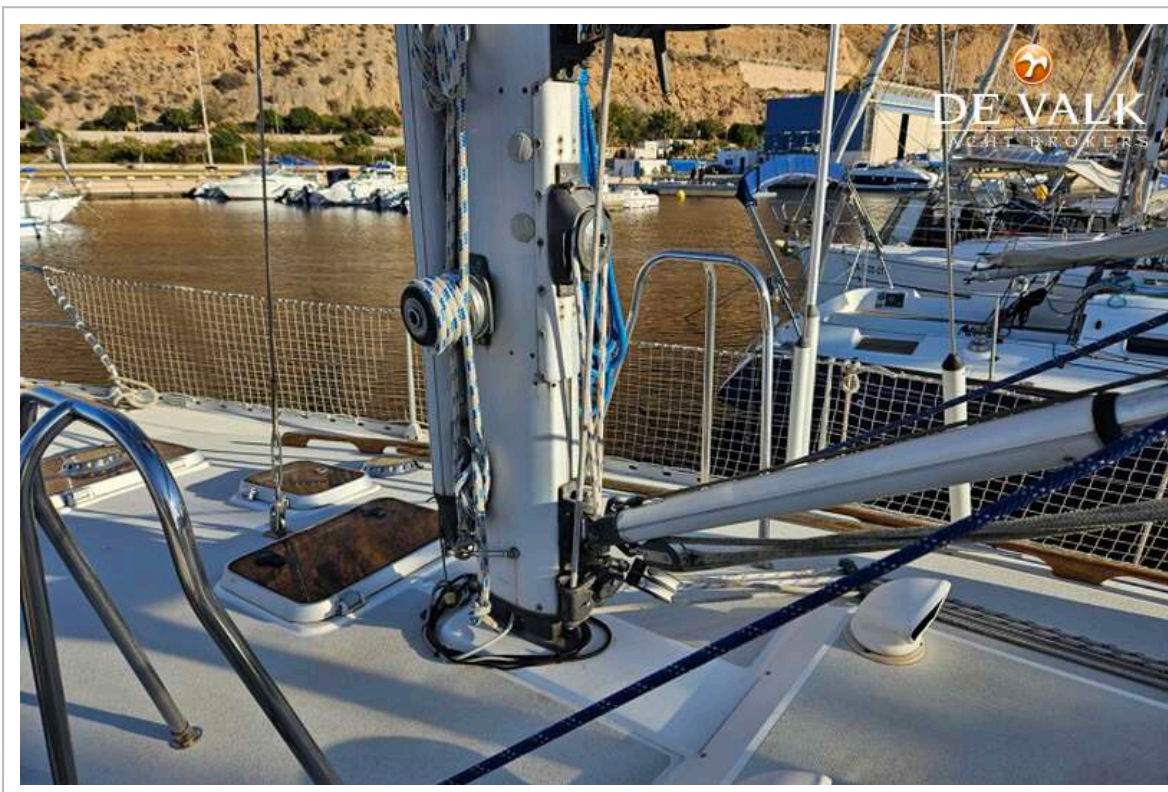
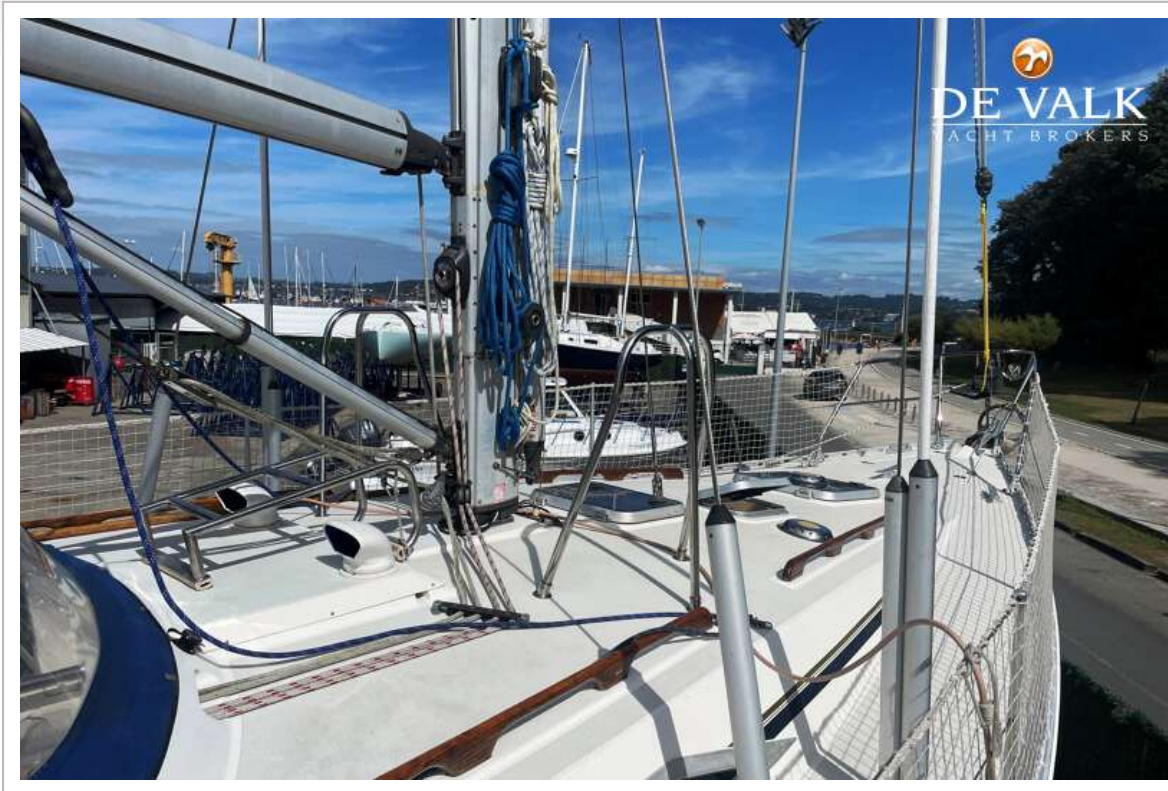
MOODY 376



MOODY 376



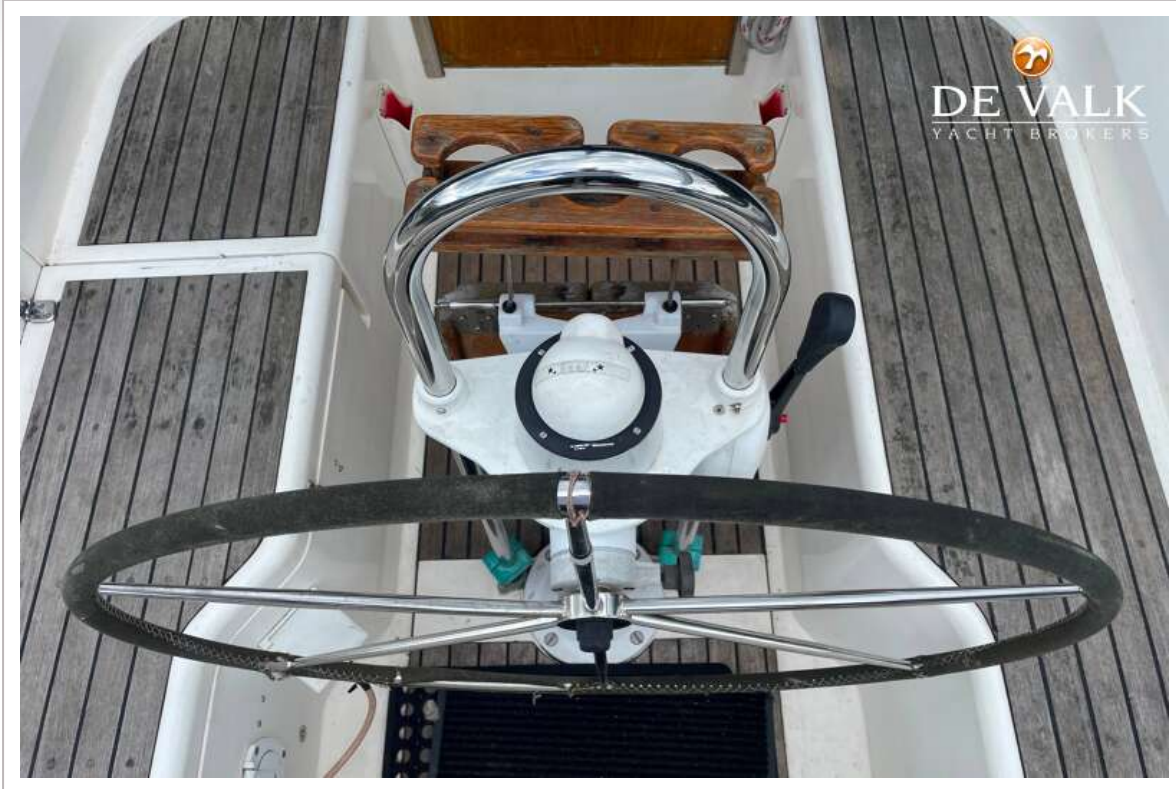
MOODY 376



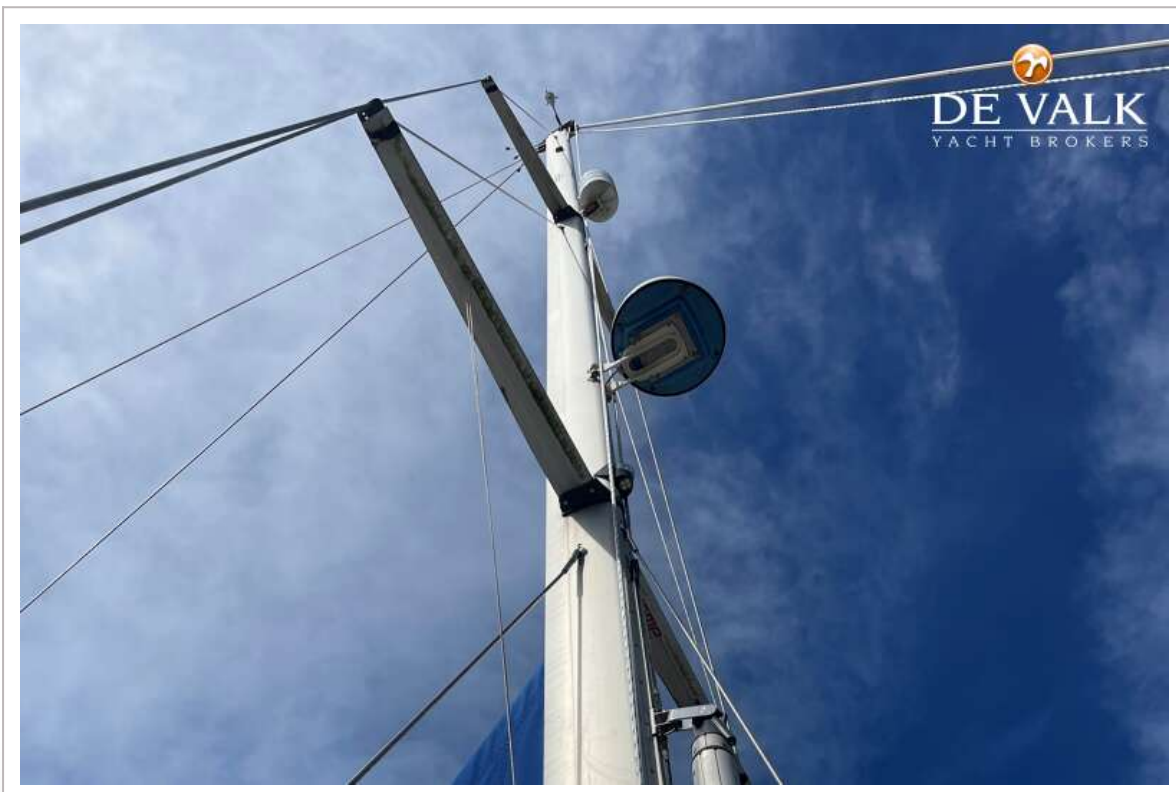
MOODY 376



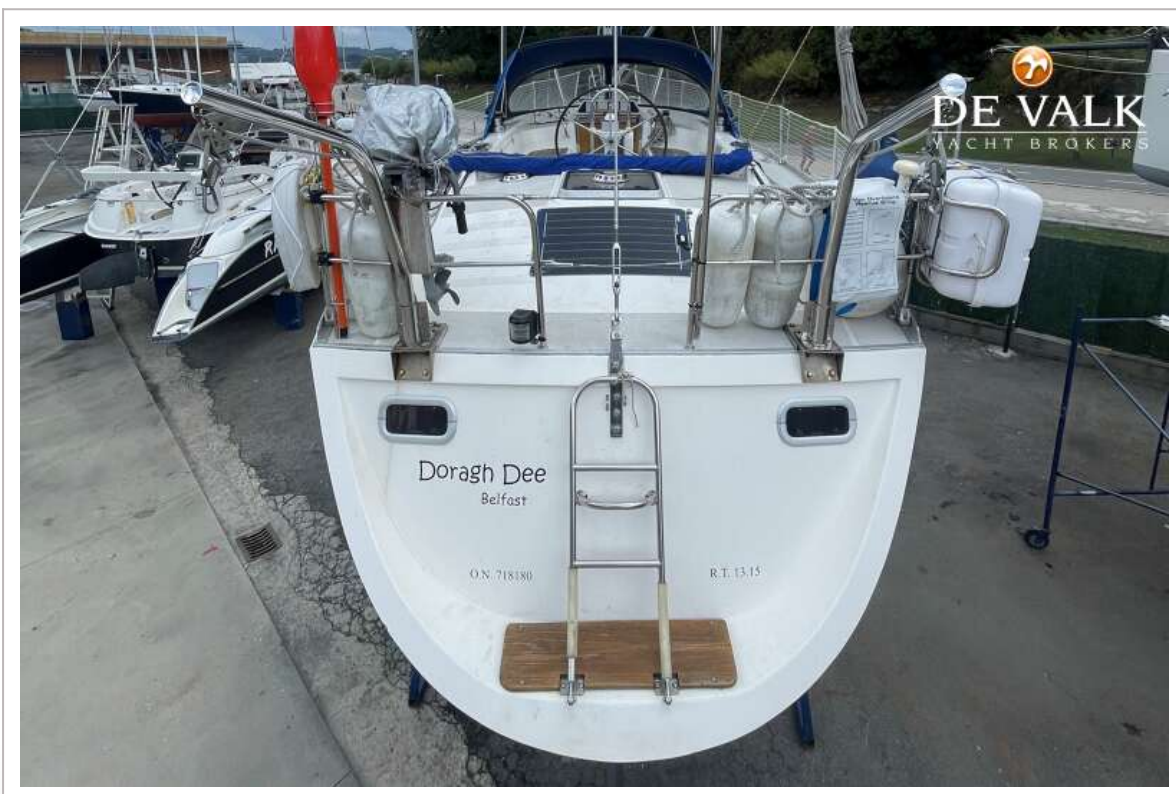
MOODY 376



MOODY 376



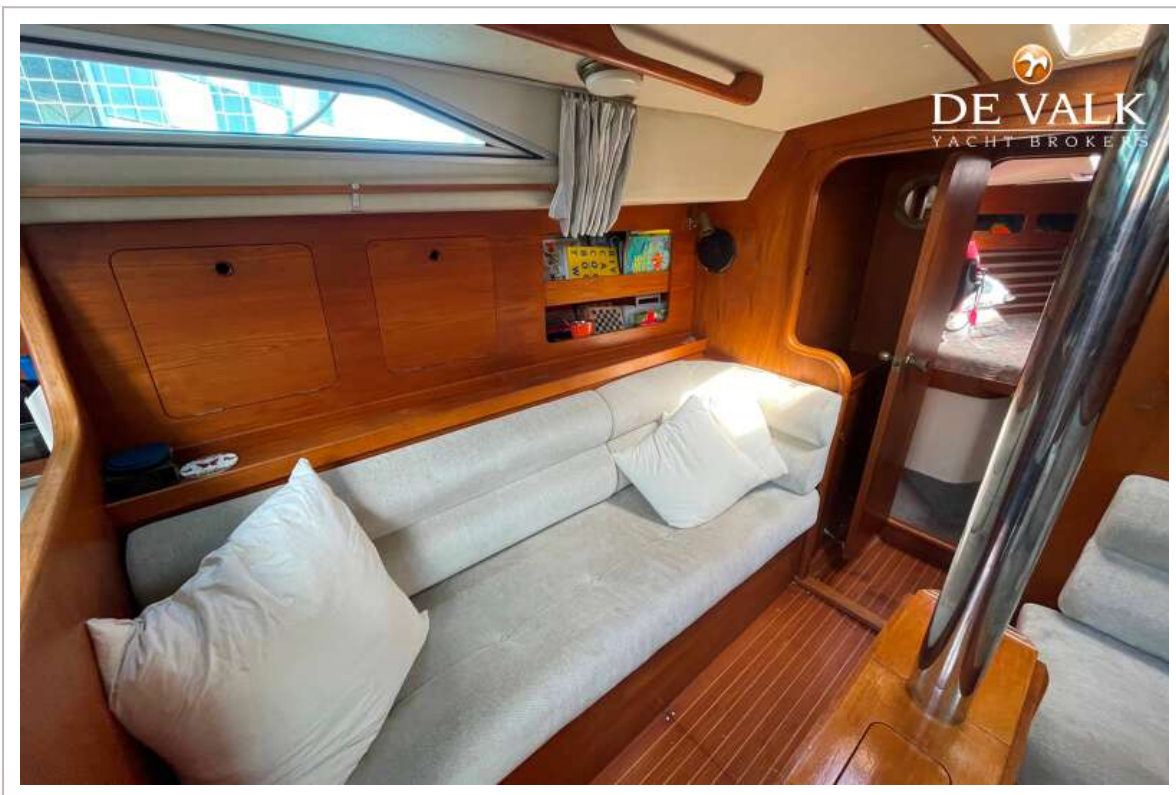
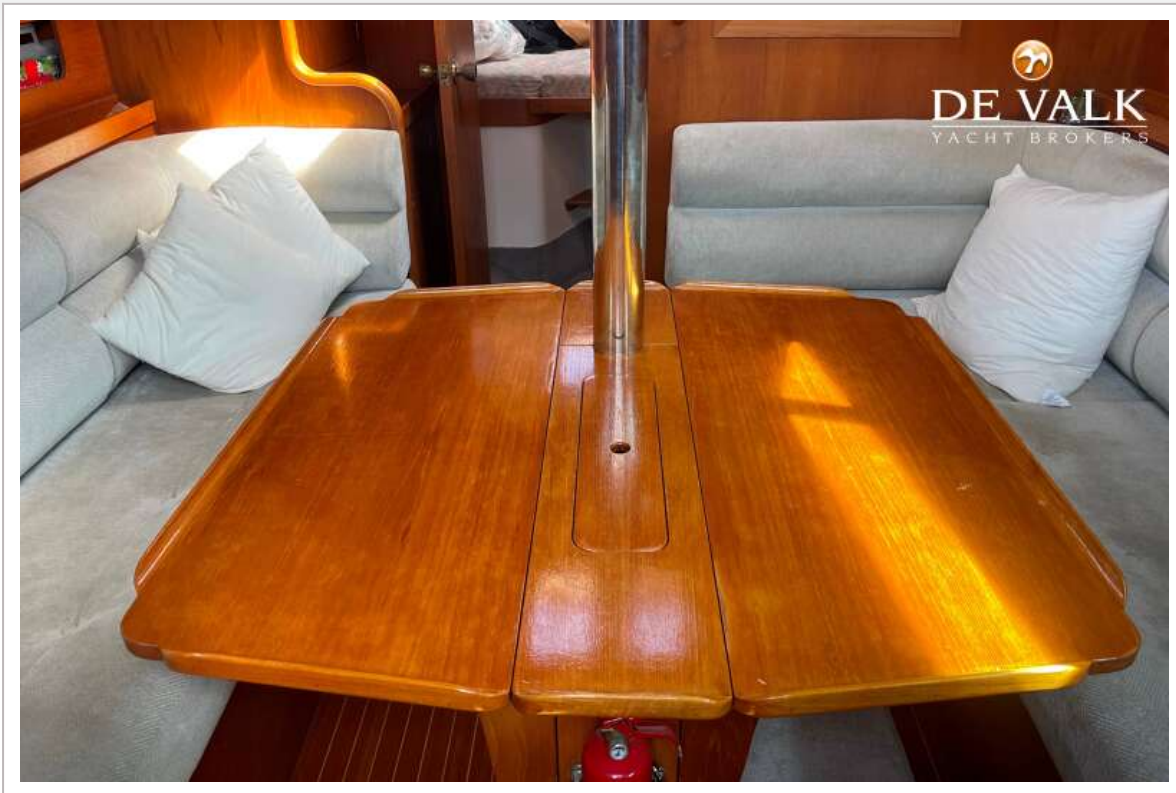
MOODY 376



MOODY 376



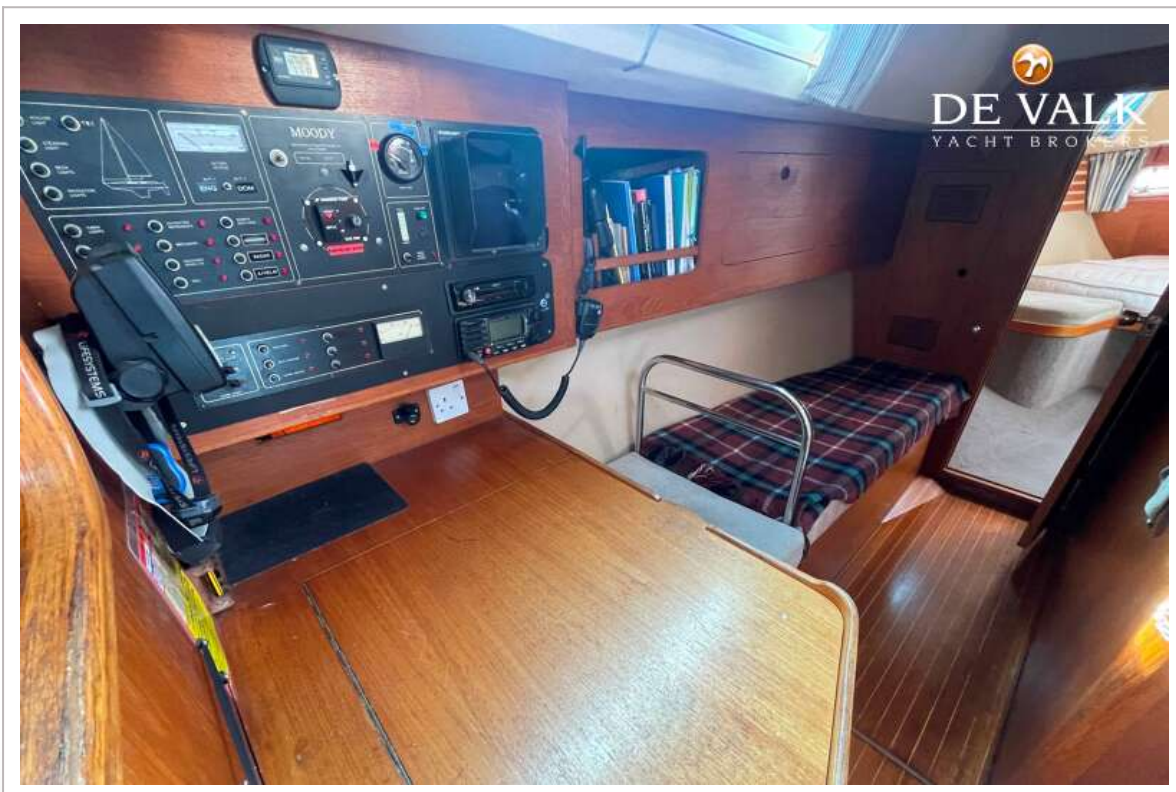
MOODY 376



MOODY 376



MOODY 376



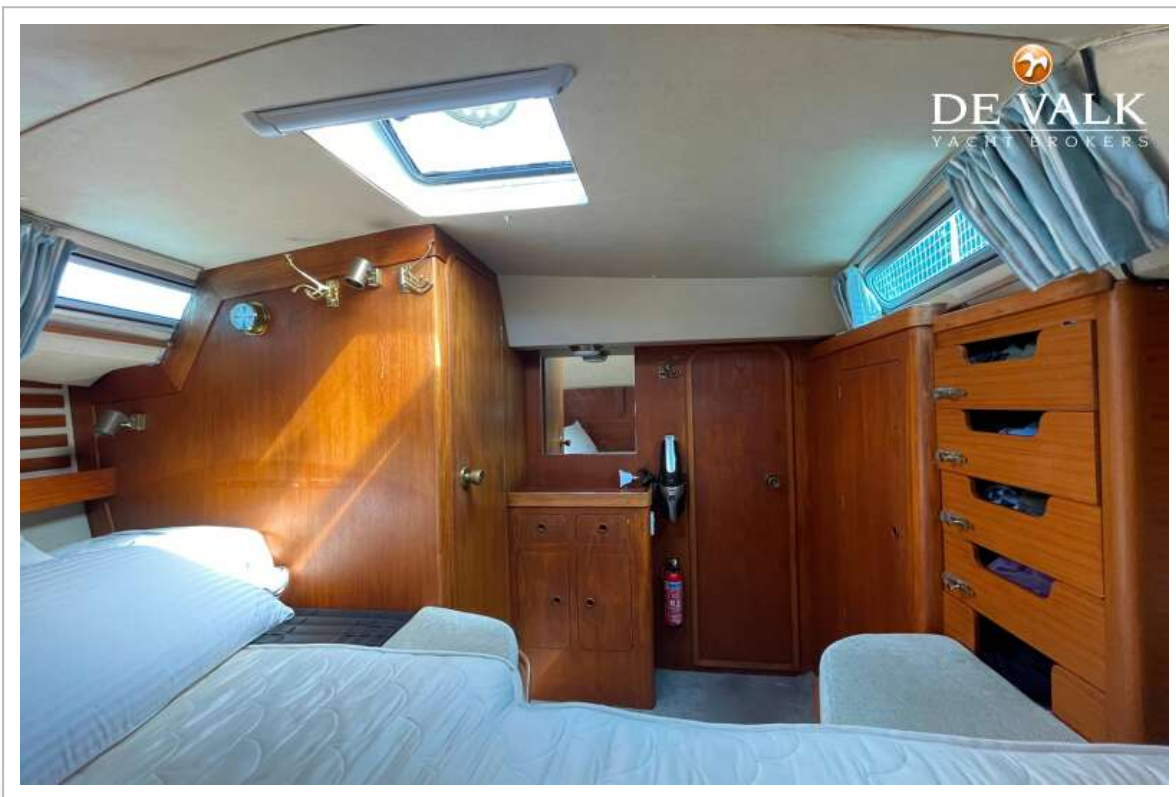
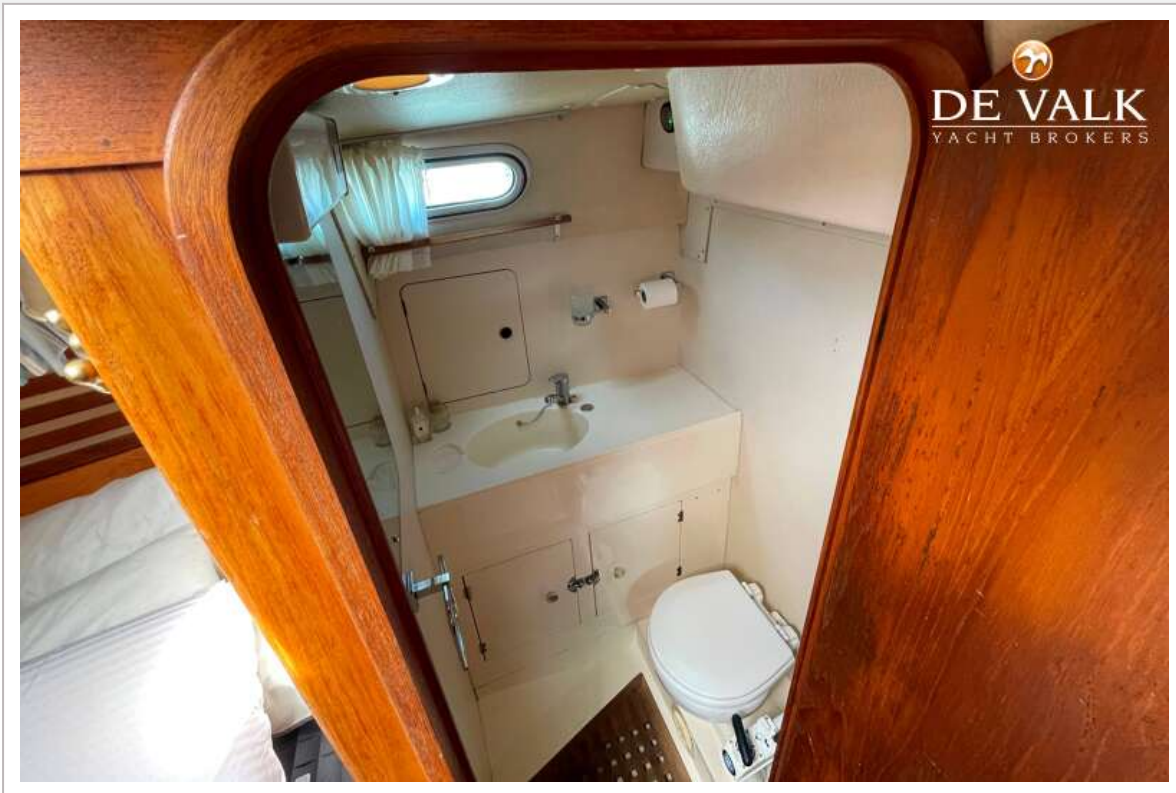
MOODY 376



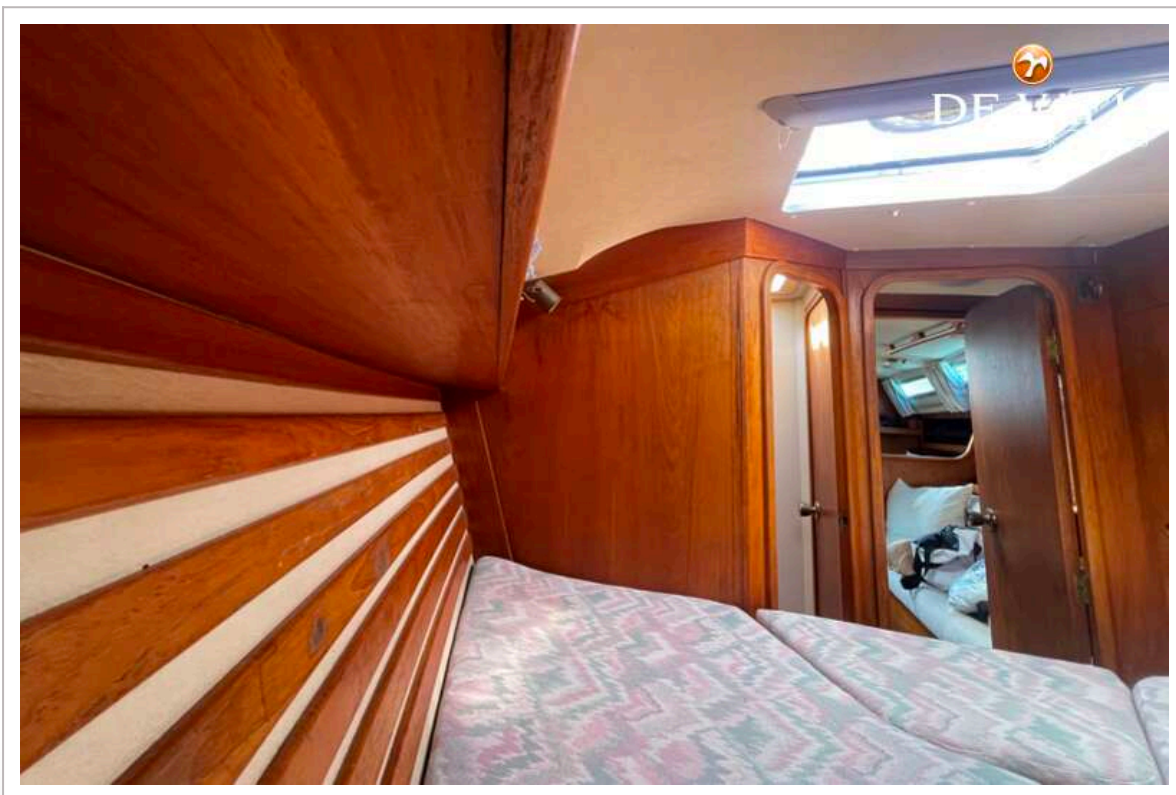
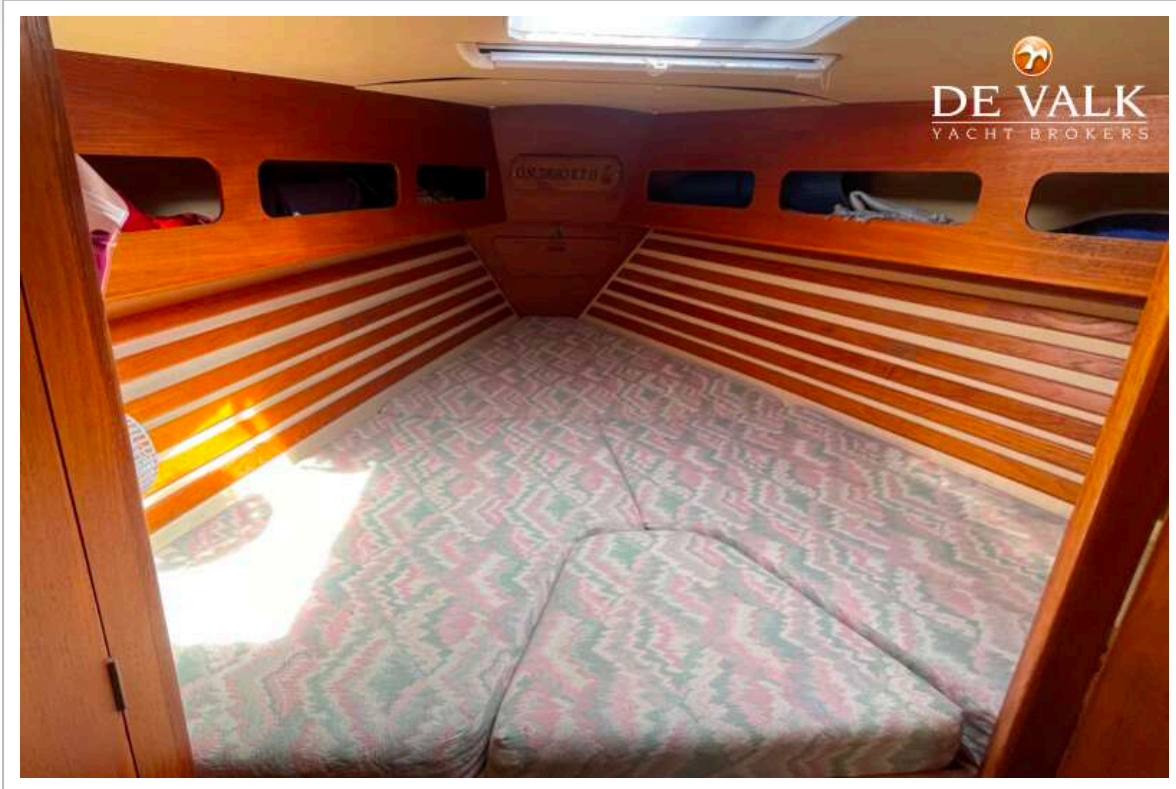
MOODY 376



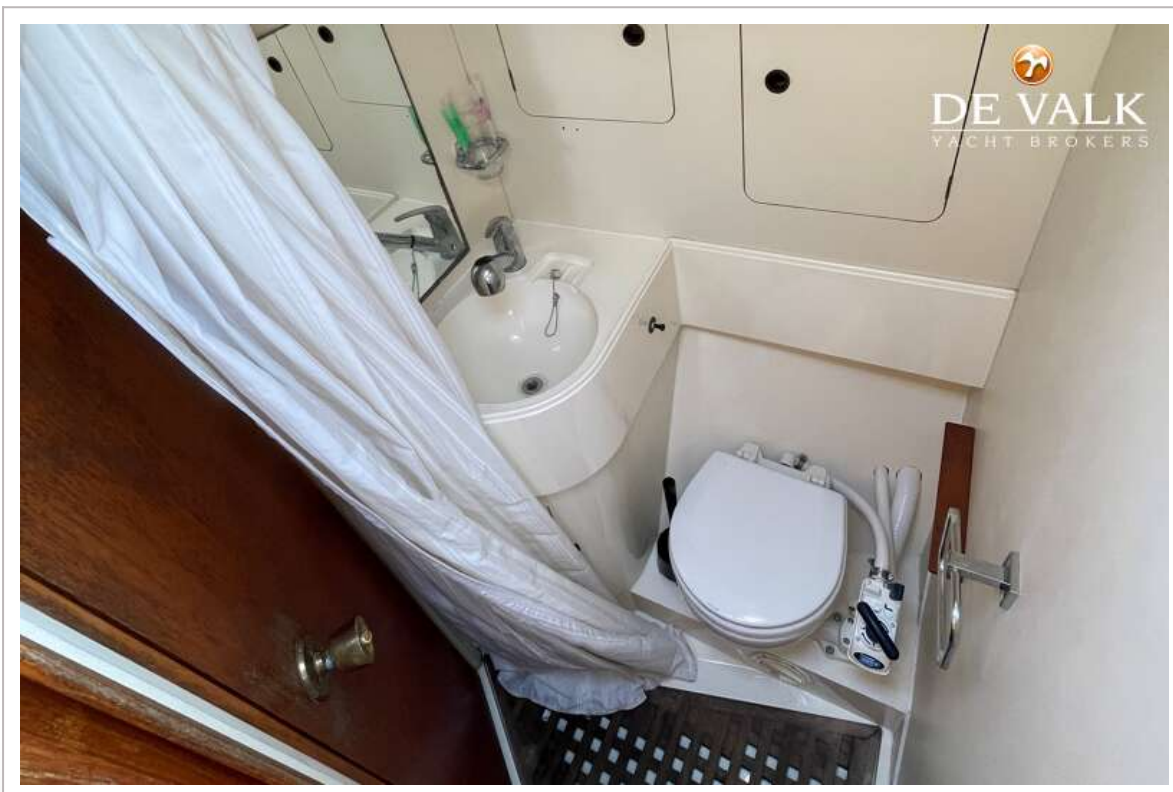
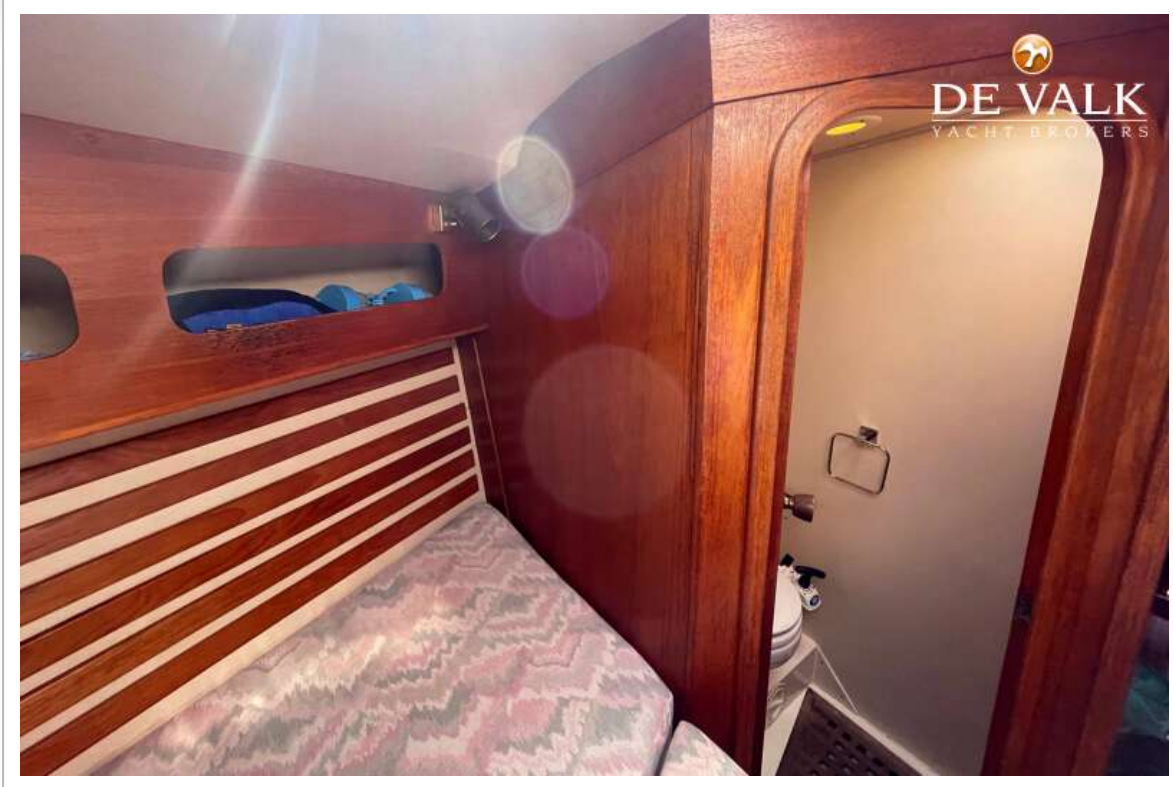
MOODY 376



MOODY 376



MOODY 376



MOODY 376

