



DE VALK  
YACHT BROKERS



BLOM LEMSTERAAK 12.10



DE VALK  
YACHT BROKERS

## BROKER'S COMMENTS

This very beautiful Blom Lemsteraak "Swaantje" is a traditional sailing yacht built in 1990 by Skipshelling I. Blom en zn - Hindeloopen. The current and previous owner have carried out extensive refits and finish at high level. This Blom Lemsteraak is in a very good condition. This very performance sailing yacht has all necessary comfort on board and with low draft and hydraulic mast lowering system you have access to both inland and blue waters. Now ready to be admired and inspected at our salesharbor in Hindeloopen.

*Johan Schootstra*

## SPECIFICATIONS

<b>Dimensions</b>	12.10 x 4.70 x 1,40 / 0.85 (m)	<b>Builder</b>	Skipshelling I. Blom en zn.
<b>Built</b>	1990	<b>Cabins</b>	2
<b>Material</b>	Steel	<b>Berths</b>	8
<b>Engine(s)</b>	1 x Ford diesel	<b>Hp/Kw</b>	80.00 (hp), 58.88 (kw)
<b>Asking price</b>	€ 149.500 (VAT Paid)	<b>Lying</b>	at sales office

## CONTACT

<b>Sales office</b>	De Valk Hindeloopen	<b>Telephone</b>	+31 514 52 40 00
<b>Address</b>	Oosterstrand 1 8713 JS Hindeloopen The Netherlands	<b>E-mail</b>	hindeloopen@devalk.nl

## DISCLAIMER

These particulars are given in good faith as supplied but cannot be guaranteed.



## GENERAL

<b>Model</b>	BLOM LEMSTERAAK 12.10
<b>Type</b>	sailing yacht
<b>LOA (m)</b>	12,10
<b>Beam (m)</b>	4,70
<b>Draft (m)</b>	0,85
<b>Draft min (m)</b>	1,40
<b>Air draft (m)</b>	16,50
<b>Air draft min (m)</b>	3,00
<b>Headroom (m)</b>	2,00
<b>Year built</b>	1990
<b>Launched</b>	1992
<b>Builder</b>	Skipshelling I. Blom en zn.
<b>Country</b>	The Netherlands
<b>Designer</b>	D. Blom
<b>Displacement (t)</b>	16
<b>Ballast (tonnes)</b>	1950 kg
<b>Hull material</b>	steel
<b>Hull colour</b>	white
<b>Hull shape</b>	flat bottom
<b>Keel type</b>	Leeboard
<b>Superstructure material</b>	steel
<b>Deck material</b>	steel
<b>Deck finish</b>	teak
<b>Superstructure deck finish</b>	teak
<b>Cockpit deck finish</b>	teak
<b>Window frame</b>	8x   Bronze
<b>Deckhatch</b>	2x skylights   with custom made mosquito nets and covers
<b>Portholes</b>	4x   Bronze
<b>Mast can be lowered</b>	hydraulic   remote control
<b>Fuel tank (litre)</b>	steel   2x 350 ltr.



Level indicator (fuel tank)	yes
Fuel daytank (litre)	yes
Level indicator (daytank)	yes
Freshwater tank (litre)	polyethylene   250 ltr.
Level indicator (freshwater)	yes
Blackwater tank (litre)	Approx 250 ltr.
Level indicator (blackwater)	yes
Blackwater tank extraction	deck extraction + pump
Wheel steering	mechanical   with custom made cover

## ACCOMMODATION

Cabins	2
Berths	8
Interior	teak   beautiful interior, custom made, "curved corners"
Open cockpit	yes
Saloon	yes
Headroom saloon (m)	2 mtr.
Heating	Refleks, 2 chimneys for different wind conditions - also sailing
Galley	yes
Countertop	corian
Sink	yes
Cooker	calor gas   4 burner
Gas alarm	2x smoke detector and 1x CO detector
Fridge	12 volt
Freezer	In fridge
Hot water system	220V + engine
Water pressure system	electrical
Toilet	yes
Toilet system	electric
Wash basin	yes
Shower	With retractable custom made teak chair in the shower



**Extra info** high grade, two step fittings for all hatches and drawers

## MACHINERY

<b>No of engines</b>	1
<b>Make</b>	Ford
<b>HP</b>	80
<b>kW</b>	58.88
<b>Fuel</b>	diesel
<b>Maximum speed (kn)</b>	7,5
<b>Cruising speed (kn)</b>	6,5
<b>Engine hours</b>	892
<b>Engine cooling system</b>	freshwater heat exchanger
<b>Drive</b>	shaft
<b>Engine controls</b>	bowden cable
<b>Gearbox</b>	mechanical
<b>Bowthruster</b>	electric   Vetus 12512S   new 2015
<b>Exhaust</b>	watercooled
<b>Propeller type</b>	fixed   Bronze
<b>Propeller blades</b>	3
<b>Propeller shaft material</b>	stainless steel
<b>Electric bilge pump</b>	2x
<b>Electrical installation</b>	12 and 220 vlot
<b>Start battery</b>	1x
<b>Service battery</b>	2x 230Ah   12v
<b>Bowthruster battery</b>	1x
<b>Shorepower</b>	with cable

## NAVIGATION

<b>Compass</b>	Garmin Compass
<b>Depth sounder/log</b>	Raymarine ST60 TRIDATA
<b>Windset</b>	Raymarine ST60 WIND



VHF	New 2021
Autopilot	Garmin new 2023
Plotter/GPS	Garmin new 2023 at helm
AIS receiver	yes
Extra info	NMEA2000 "Blackbone"

## EQUIPMENT

Bimini	Custom made bimini tent for the cockpit   new 2021
Winter cover	Custom made   new 2021
Cockpit cushions	Custom made
Boarding ladder	At the rudder
Anchor	CQR Plough
Anchor chain	Stainless steel
Anchor 2	Admiralty (Kedge) anchor
Windlass	mechanical   Barient   Bronze
Fenders	6 + 2 balloon fenders
Mooring lines	New lines 2022
Radio	Bluetooth   new 2023
Clock - barometer	Wempe
Extra info	4 stainless steel slip nails, custom made 2022
Extra info	Custom made covers for lee boards
Extra info	yes

## RIGGING

Rigging	gaff-rig
Brand mast	Brasker   boom and Jib boom also Brasker
Material mast	wood
Mast lowering system	Hydraulic   Remote control   hydraulic pump new 2020
Mainsail	Molenaar Grou
Jib	Molenaar Grou
Yankee	Molenaar Grou



**Primary sheet winch**

2x Barent 21 Bronze

**Genoa sheetwinches**

2x Barent 48 Bronze | Self Tailing

**Halyard winches**

Two at the mast BB and SB stainless & Bronze

**Reefing winch**

1x Bronze on boom

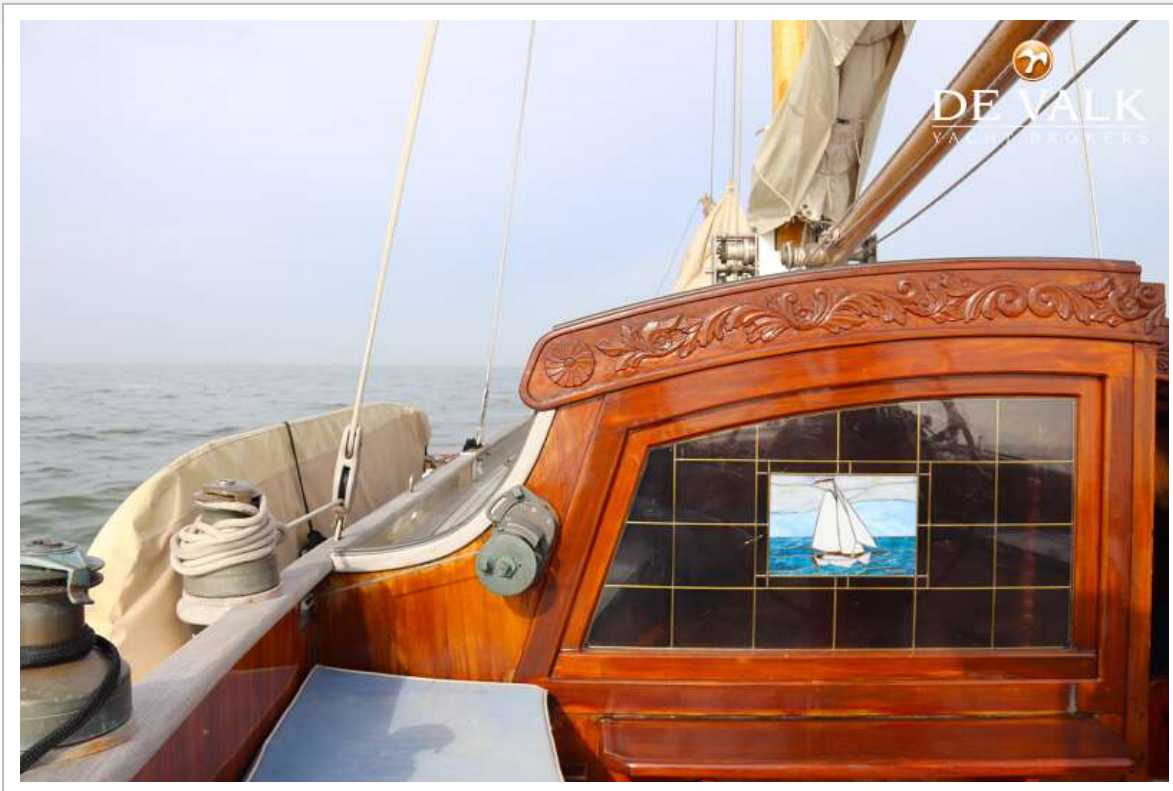
**Multifunctional winches**

Two leeboard winches bronze in cockpit | Barent 21

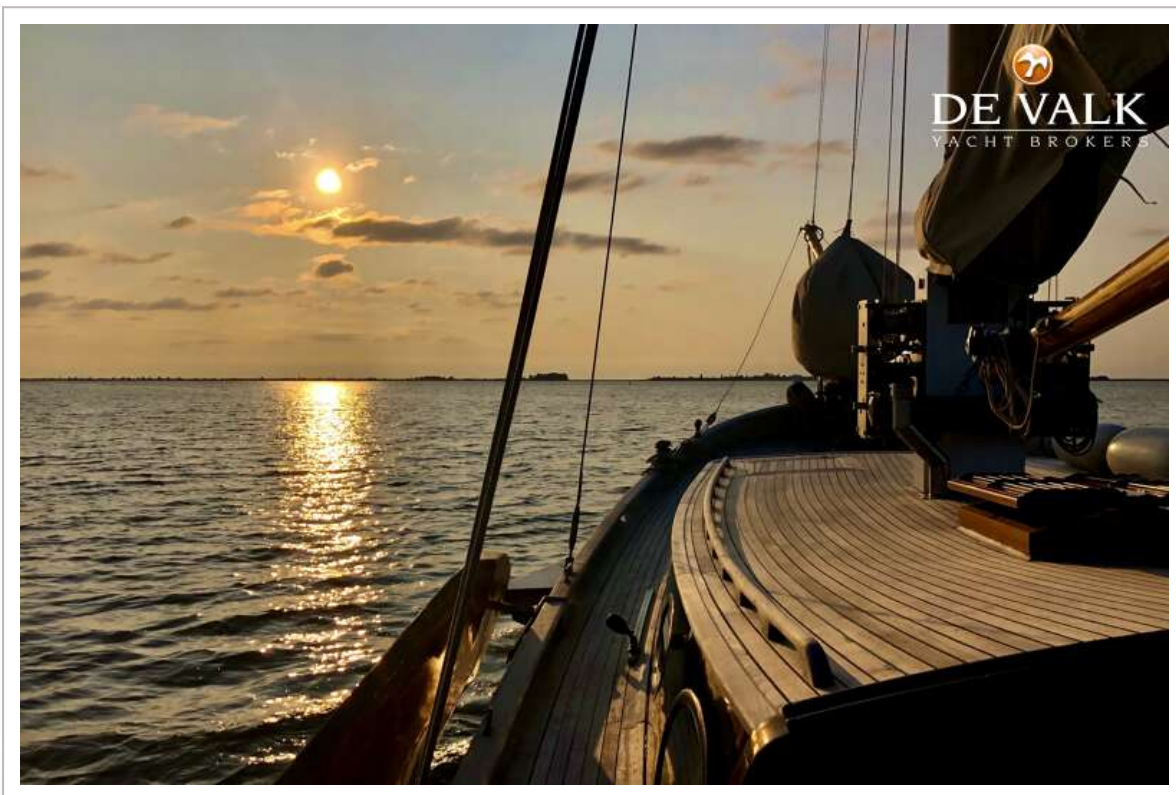








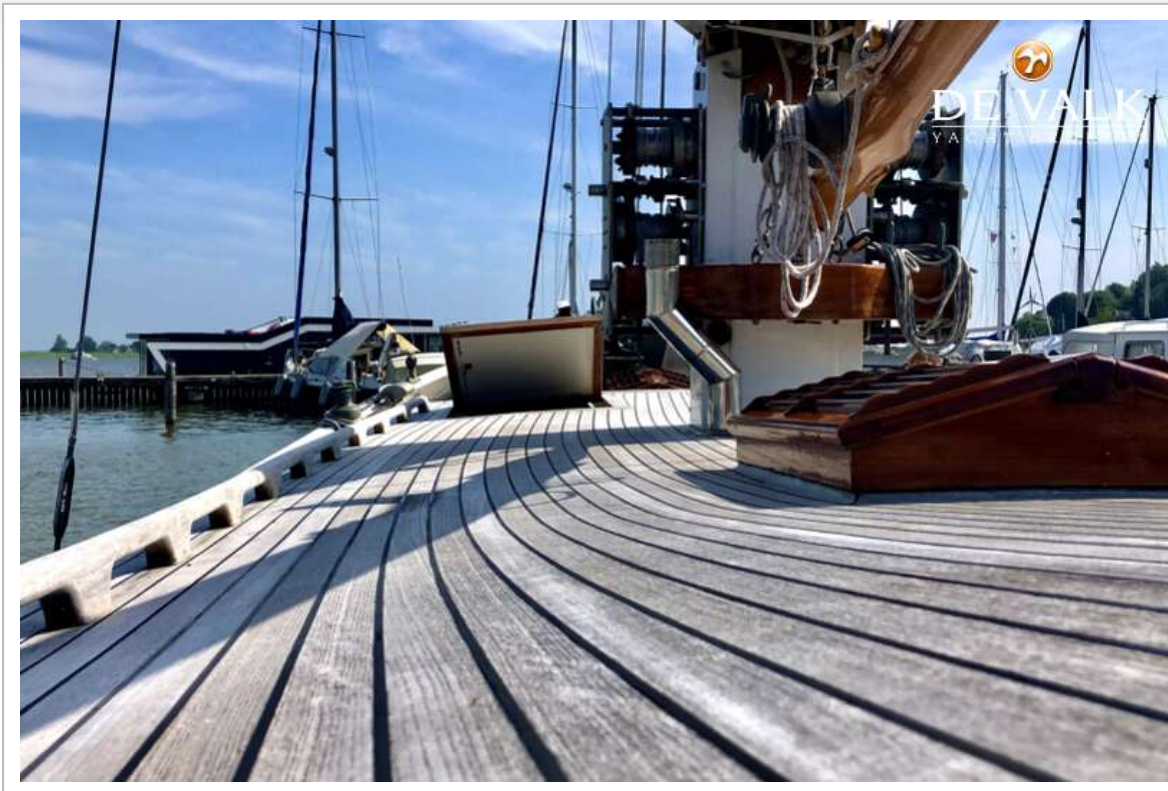














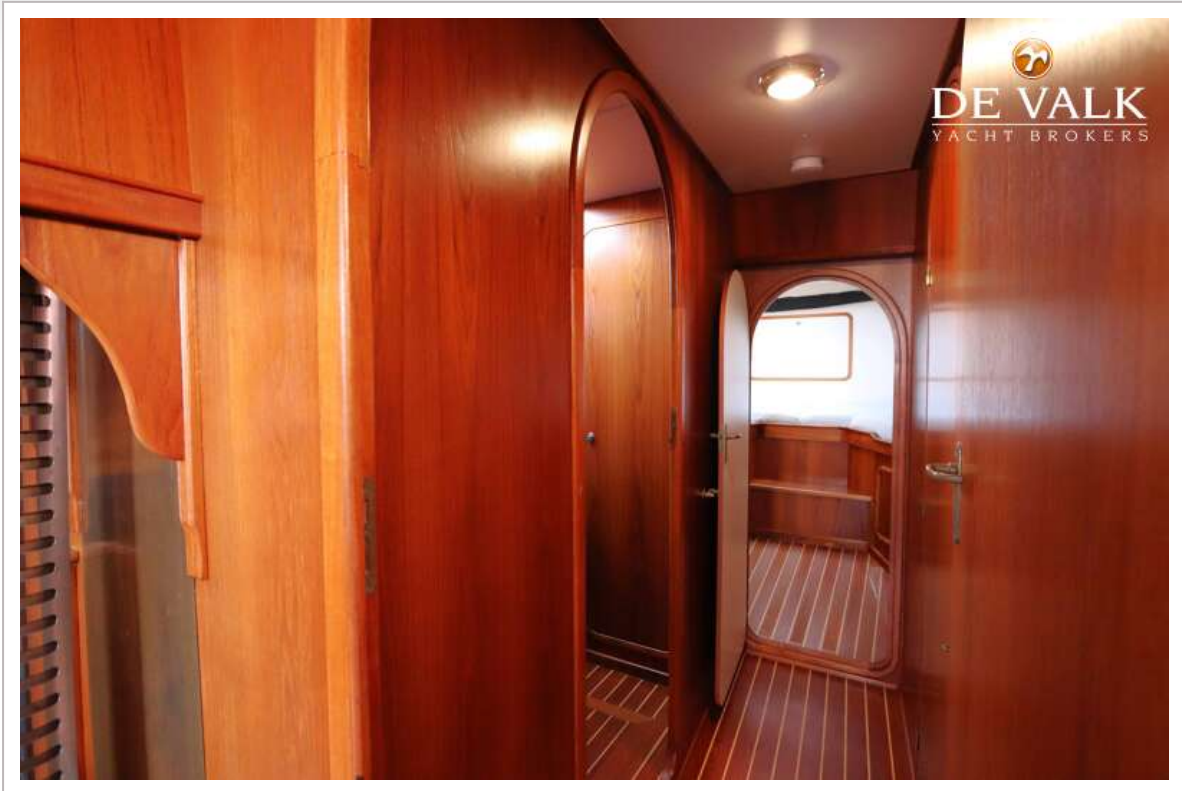


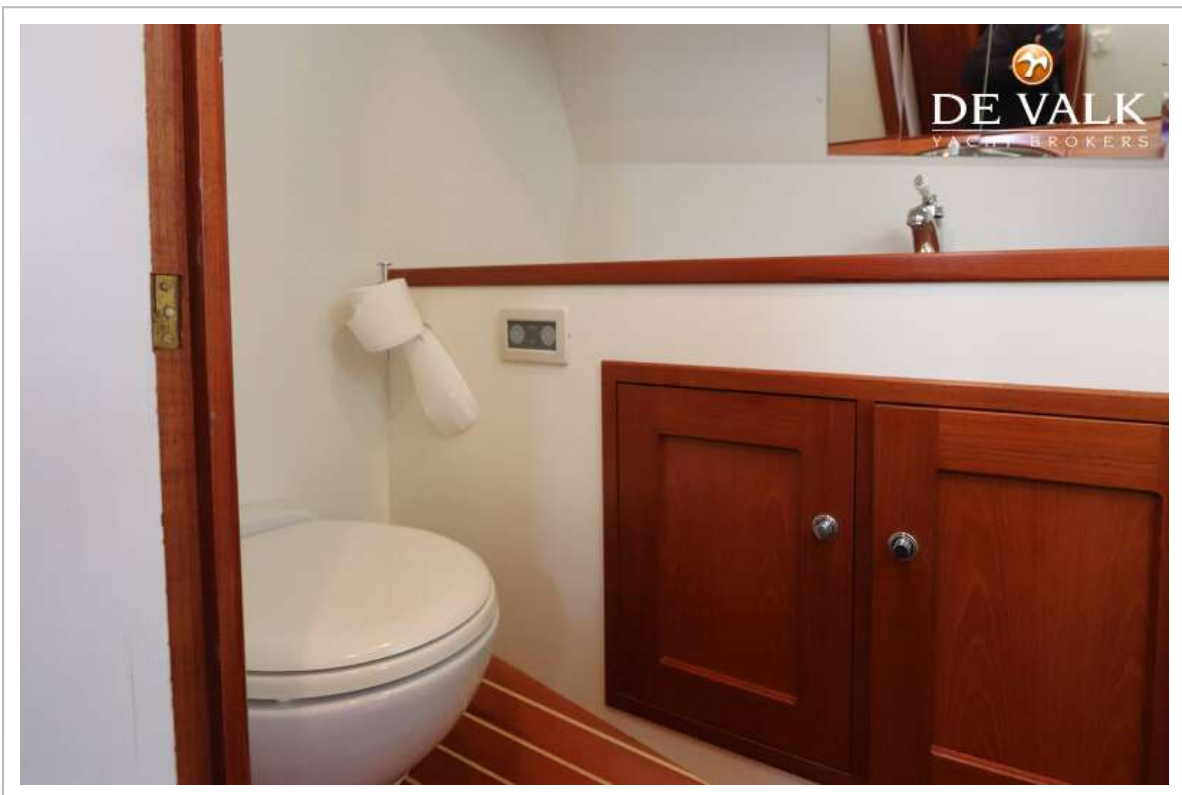














# BLOM LEMSTERAAK 12.10

