



DE VALK  
YACHT BROKERS



NAJAD 440 CC



DE VALK  
YACHT BROKERS

## BROKER'S COMMENTS

The Najad 440 is a fast cruiser for sailors with high standards and high conditions in comfort both at sea and in harbor. The hull is slim, and this makes her fast even in low wind conditions. At the same time, this is a boat for everyone. She is built to Lloyd's specification with a hand laminated hull. Large saloon and cockpit, easy handling rig. In pristine conditions with a new teak deck.

*Jörg Hellmich*

## SPECIFICATIONS

<b>Dimensions</b>	13.30 x 3.99 x 2.20 (m)	<b>Builder</b>	Najad Yachts
<b>Built</b>	1988	<b>Cabins</b>	3
<b>Material</b>	GRP	<b>Berths</b>	6
<b>Engine(s)</b>	1 x Volvo Penta TMD 31 L-A diesel	<b>Hp/Kw</b>	100.00 (hp), 73.60 (kw)
<b>Asking price</b>	€ 179.000 (VAT Paid)	<b>Lying</b>	at sales office

## CONTACT

<b>Sales office</b>	De Valk Almeria	<b>Telephone</b>	+34 950 497 825
<b>Address</b>	Puerto de Almerimar Darsena de la Batea 1, No. 42, 04711 Almerimar Spain	<b>E-mail</b>	almeria@devalk.nl

## DISCLAIMER

These particulars are given in good faith as supplied but cannot be guaranteed.



## GENERAL

<b>Model</b>	NAJAD 440 CC
<b>Type</b>	sailing yacht
<b>LOA (m)</b>	13,30
<b>LWL (m)</b>	11,50
<b>Beam (m)</b>	3,99
<b>Draft (m)</b>	2,20
<b>Air draft (m)</b>	19,50
<b>Headroom (m)</b>	1,98
<b>Year built</b>	1988
<b>Launched</b>	1988
<b>Builder</b>	Najad Yachts
<b>Country</b>	Sweden
<b>Designer</b>	Najad
<b>Displacement (t)</b>	14,5
<b>Ballast (tonnes)</b>	6
<b>CE norm</b>	NA
<b>Hull material</b>	GRP
<b>Hull colour</b>	white
<b>Hull shape</b>	V-shaped hull
<b>Keel type</b>	long keel
<b>Superstructure material</b>	GRP
<b>Rubbing strake</b>	stainless steel
<b>Deck material</b>	GRP
<b>Deck finish</b>	teak New in 2021
<b>Superstructure deck finish</b>	teak New in 2021
<b>Cockpit deck finish</b>	teak Original (in good condition)
<b>Antifouling (year)</b>	2023
<b>Dorades</b>	yes
<b>Window frame</b>	aluminium
<b>Window material</b>	perspex



Deckhatch	6 units
Insulation	yes
Fuel tank (litre)	stainless steel 350
Level indicator (fuel tank)	Gauge
Freshwater tank (litre)	stainless steel 800
Level indicator (freshwater)	Gauge
Blackwater tank (litre)	stainless steel 2 x 40L.
Blackwater tank extraction	pump
Wheel steering	chain steering SS
Emergency tiller	yes
More info on hull	Hull in excellent conditions
Extra info	Hull in excellent conditions with new teak deck

## ACCOMMODATION

Cabins	3
Berths	6
Interior	mahogany
Layout	3 Cabin version (owners cabin)
Floor	wood
Saloon	yes
Headroom saloon (m)	1,98
Heating	diesel ducted hot air Autotherm 12V / 4 kW
Navigation center	yes
Chart table	yes
Aft Cabin	Owner's Cabin
Galley	L-shape
Countertop	wood
Sink	stainless steel Double
Cooker	calor gas 2 hob burner
Oven	calor gas
Fridge	2 fridges



# NAJAD 440 CC

Freezer	Compartment in fridge
Hot water system	220V + engine 30L. Boiler (220V / 1,2 kW)
Water pressure system	electrical
Manual and/or foot pump	Seawater
Hot water tap	yes
Crockery	yes
Owners cabin	double bed Aft
Bed length (m)	1,90 x 1,60
Wardrobe	hanging/drawers/shelves
Toilet	en suite
Toilet system	electric
Wash basin	at the toilet
Shower	en suite
Guest cabin 1	single bed FW Port
Bed length (m)	1,90 x 0,70
Wardrobe	hanging and shelves
Toilet	shared
Toilet system	electric
Wash basin	at the toilet
Shower	shared
Guest cabin 2	twin single FW STB
Bed length (m)	2,20 x 0,70
Wardrobe	hanging and shelves
Extra info	Interior in very good conditions

## MACHINERY

No of engines	1
Make	Volvo Penta
Type	TMD 31 L-A
HP	100
kW	73.60



# NAJAD 440 CC

<b>Fuel</b>	diesel
<b>Year installed</b>	1995
<b>Maximum speed (kn)</b>	8,5
<b>Cruising speed (kn)</b>	6,5 @ 1.800 rpm
<b>Consumption (l/hr)</b>	6
<b>Range (nm)</b>	400
<b>Engine hours</b>	3610
<b>Engine cooling system</b>	freshwater heat exchanger
<b>Drive</b>	shaft
<b>Shaft seal</b>	New 2023
<b>Engine controls</b>	bowden cable VP
<b>Gearbox</b>	hydraulic HS1A
<b>Bowthruster</b>	electric Sleipner SE 170/250 TC / 8 kW
<b>Exhaust</b>	watercooled
<b>Propeller type</b>	folding Max Prop Classic E70
<b>Propeller blades</b>	3
<b>Propeller shaft material</b>	stainless steel
<b>Shaft lubrication</b>	water
<b>Manual bilge pump</b>	yes
<b>Electric bilge pump</b>	yes
<b>Electrical installation</b>	12V & 24V system
<b>Start battery</b>	12V / 140 Ah Acid (2022)
<b>Service battery</b>	2 x 24V / 160 Ah Mastervolt AGM (2022)
<b>Navigation Battery</b>	2 x 12V / 125 Ah Zenith Acid (2022)
<b>Battery monitor</b>	Magnetotronic
<b>Battery charger</b>	Mastervolt & Quick
<b>Inverter</b>	400W
<b>Diode battery combiners</b>	yes
<b>Shorepower</b>	with cable 230V
<b>Extra info</b>	Yearly engine service



## NAVIGATION

Compass	Plath
Electric compass	yes
Depth sounder	B&G 20/20 CD (2022) Built in Zeus 3S
Log	B&G 20/20 CD (2022) (Paddle wheel defect)
Windset	B&G H5000 / 3000 (2022) + B&G Gauges
VHF	B&G V60 B (2022)
Autopilot	B&G Hydra Pilot 2 (2022)
Rudder angle indicator	B&G
Plotter/GPS	B&G Zeus 3S 16" (2022)
Radar/GPS	B&G Halo 20+ (2022)
Wifi antenna	yes
Electronic chart(s)	Navionics
AIS transponder	B&G V 60 B (VHF) (2022)
EPIRB	Accusat
Navigation lights	yes
Loudhailer	Foghorn

## EQUIPMENT

Fixed windscreen	yes
Sprayhood	yes
Cockpit cover	yes
Bimini	yes
Sun awning	yes
Cockpit cushions	yes
Cockpit table	yes
Bathing platform	yes
Boarding ladder	stainless steel
Deck shower	Hot & cold
Anchor	Rocna 33 kg
Anchor chain	70 m



Anchor 2	Spare Anchor
Chain counter	yes
Windlass	electrical Lofrans Project 1500
Dinghy	inflatable Zodiac 230 Aero
Outboard	Suzuki 2,5 HP
Outboard support	yes
Sea railing	wire
Grab rail (superstructure)	yes
Railing side opening gates	yes
Pushpit	SS
Pulpit	SS
Life raft	container 2 x Plastimo Coastal (2016)
Life raft (pers)	6
Last life raft survey	Next service: 05.2026
Lifebuoy	yes
Fenders	yes
Mooring lines	yes
Spare parts	yes
Tools	yes
Radio-cd player	Clarion
iPod connection	yes
Cockpit speakers	yes
Speakers in salon	yes
Speakers in cabin	yes
Clock - barometer	yes
Fire extinguisher	yes

## RIGGING

Rigging	sloop-cutter
Standing rigging	wire New in 2013
Brand mast	Seldén





<b>Material mast</b>	aluminium
<b>Spreaders</b>	2 sets
<b>Keel stepped mast</b>	yes
<b>Mainsail</b>	43m <sup>2</sup> in good condition (serviced)
<b>Genoa I</b>	70m <sup>2</sup> in good condition (serviced)
<b>Genoa II</b>	60m <sup>2</sup> (new in 2022)
<b>Genoa furler</b>	Selden Furlex
<b>Cutter furler</b>	Selden Furlex
<b>Reefing System</b>	main in-mast furling
<b>Backstay adjuster</b>	mechanical
<b>Boomvang</b>	mechanical and tackle
<b>Primary sheet winch</b>	2 x Lewmar ST / 2SP 52"
<b>Secondary sheet winch</b>	2 x Lewmar ST / 2SP 43" (Traveller)
<b>Genoa sheetwinches</b>	2 x Lewmar ST / 2SP 52"
<b>Halyard winches</b>	2 x Lewmar ST / 2SP 43" (on mast)
<b>Multifunctional winches</b>	halyard/sheet winches Lewmar EST 2 SP 40" (electric)
<b>Winchcovers</b>	yes



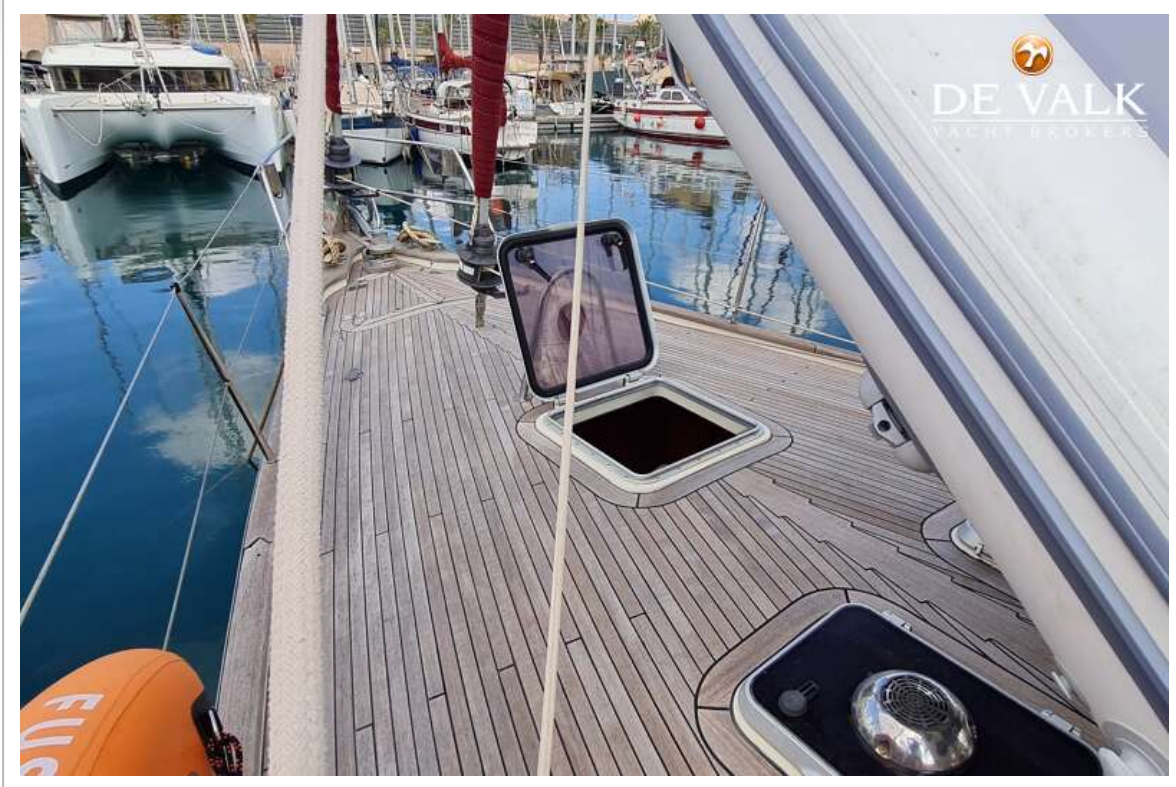
# NAJAD 440 CC



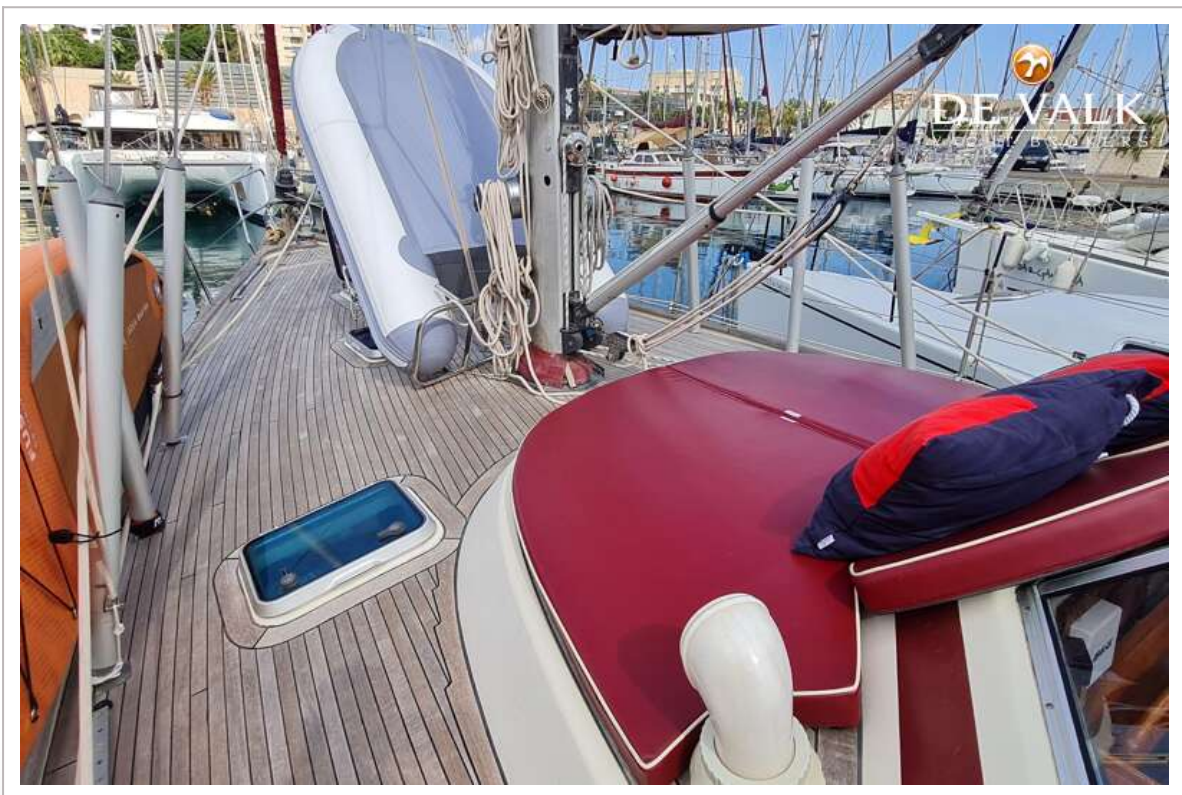
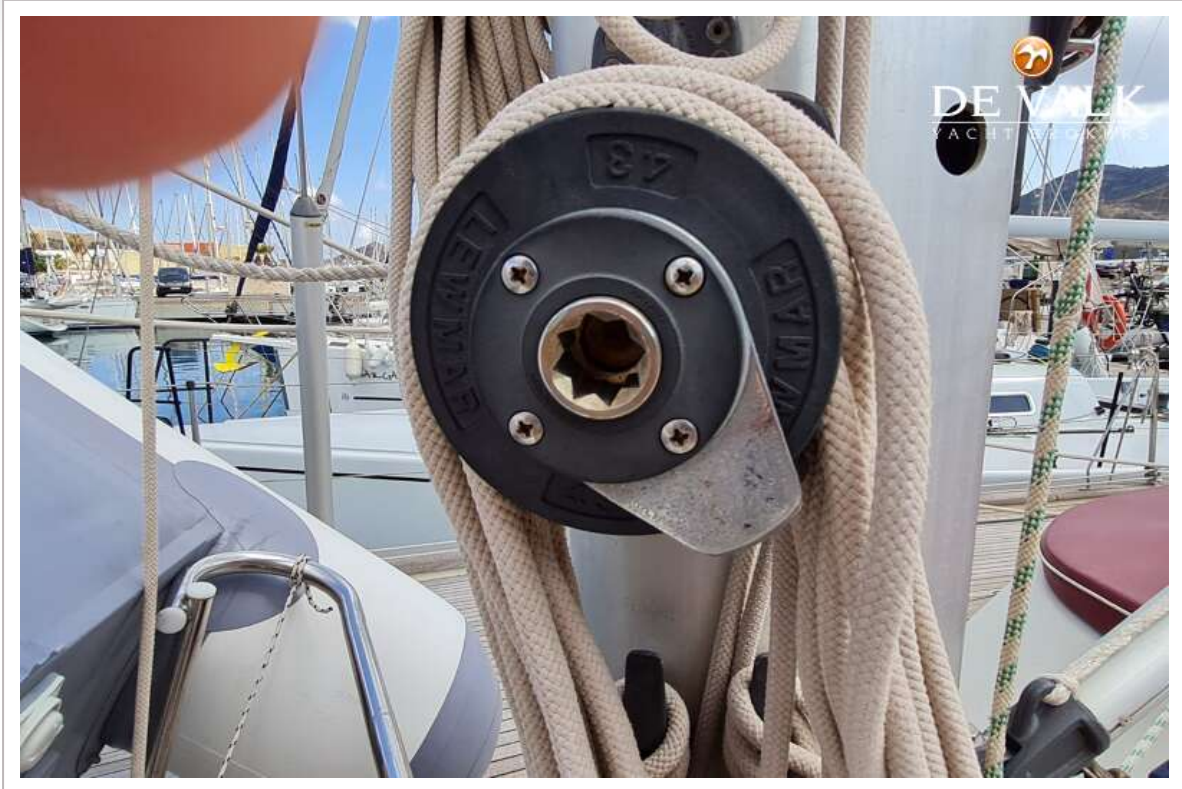
# NAJAD 440 CC



# NAJAD 440 CC



# NAJAD 440 CC



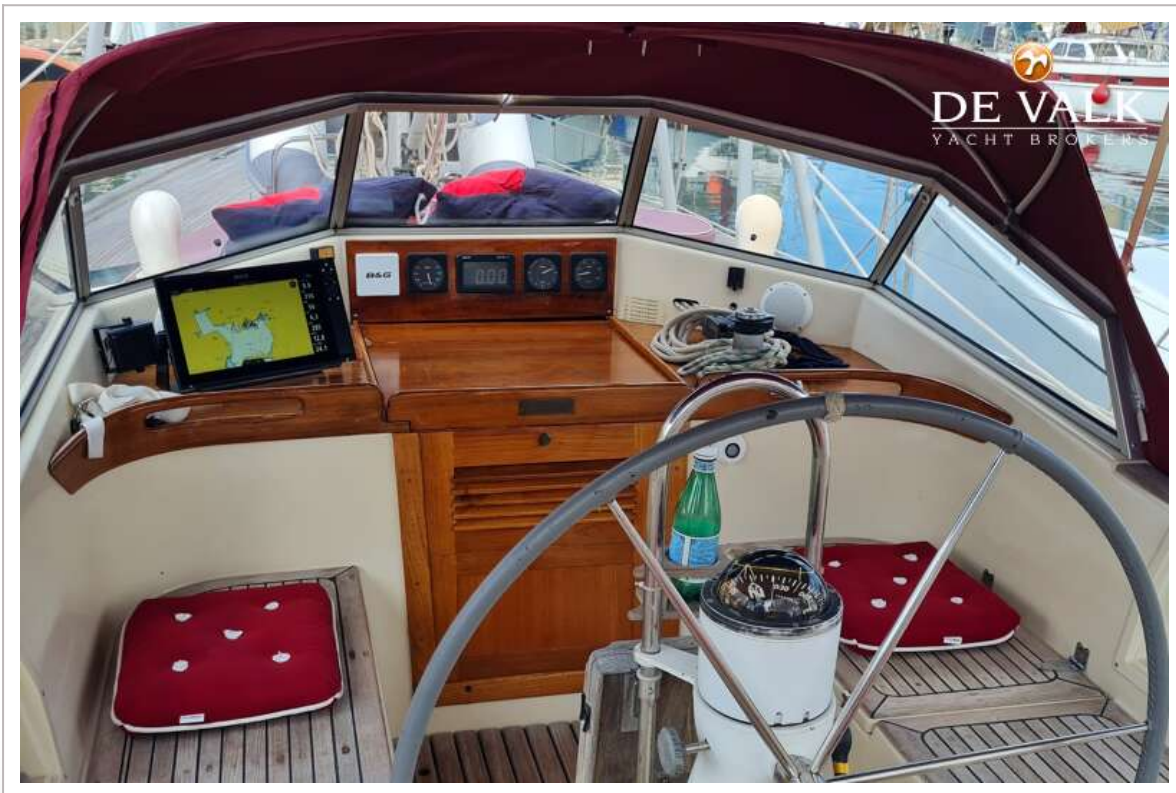
# NAJAD 440 CC



# NAJAD 440 CC



# NAJAD 440 CC

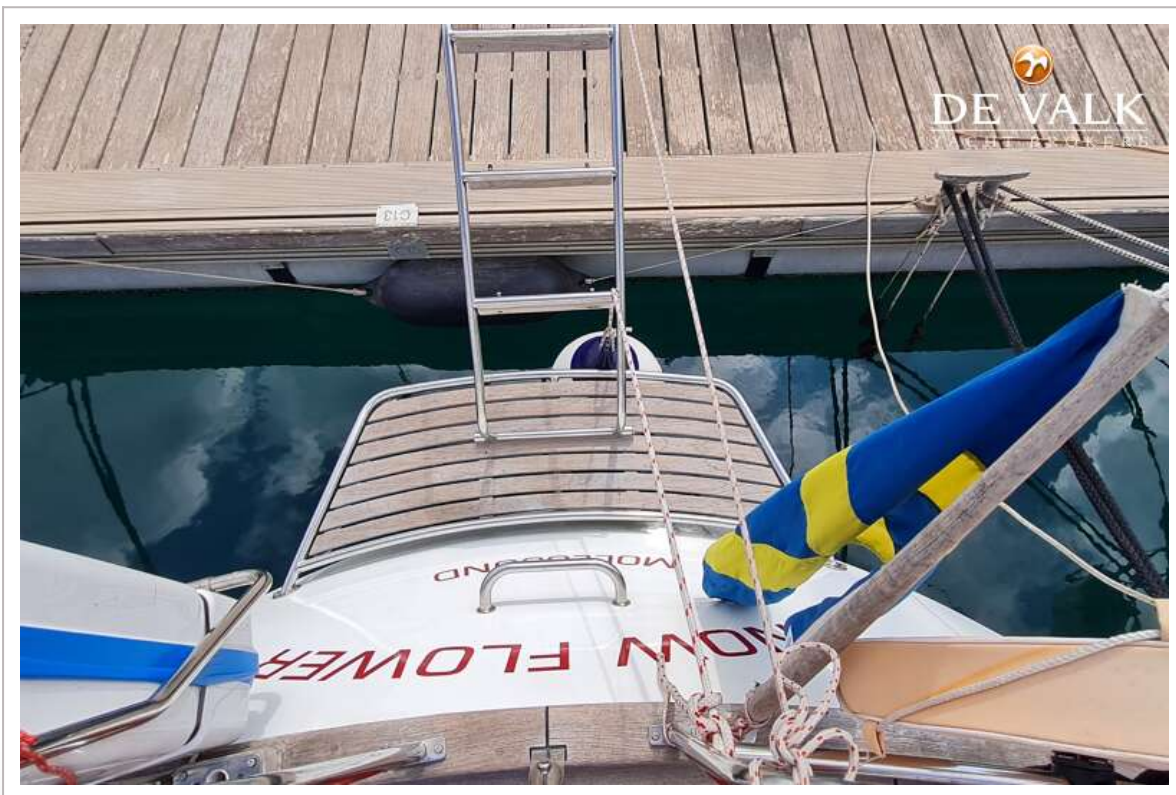
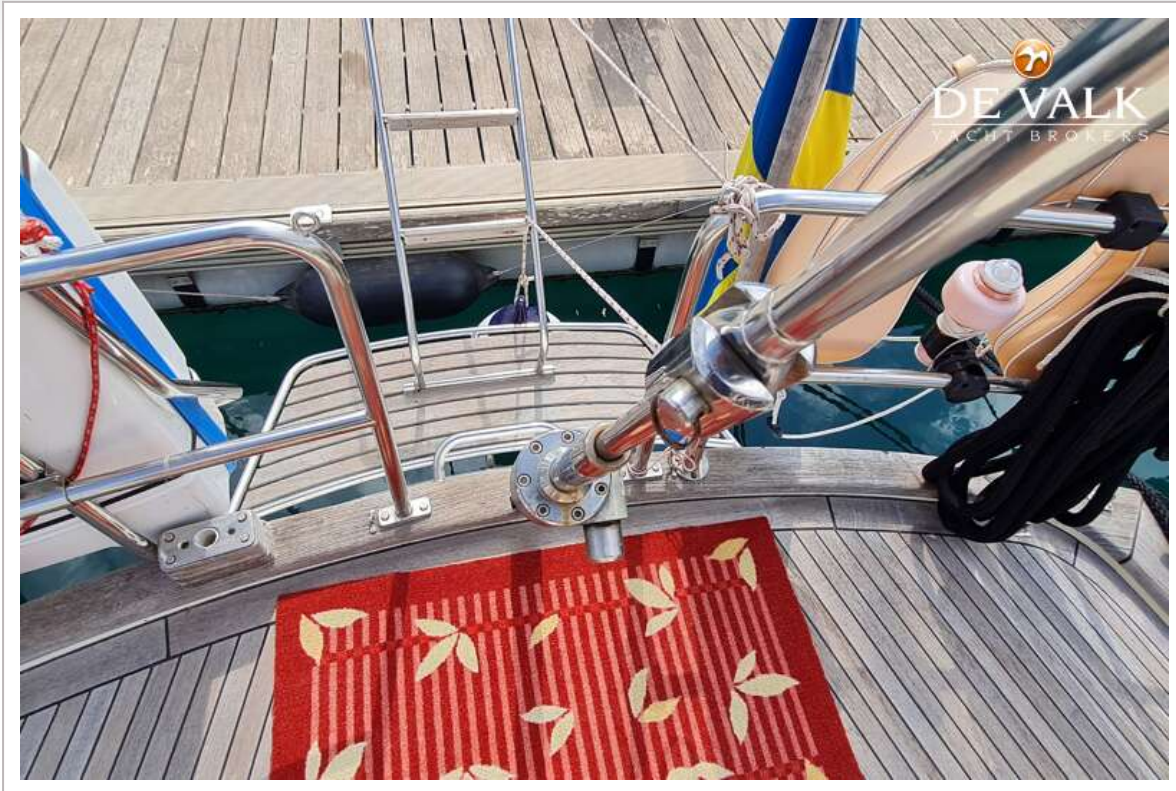




# NAJAD 440 CC



# NAJAD 440 CC



# NAJAD 440 CC



# NAJAD 440 CC



# NAJAD 440 CC



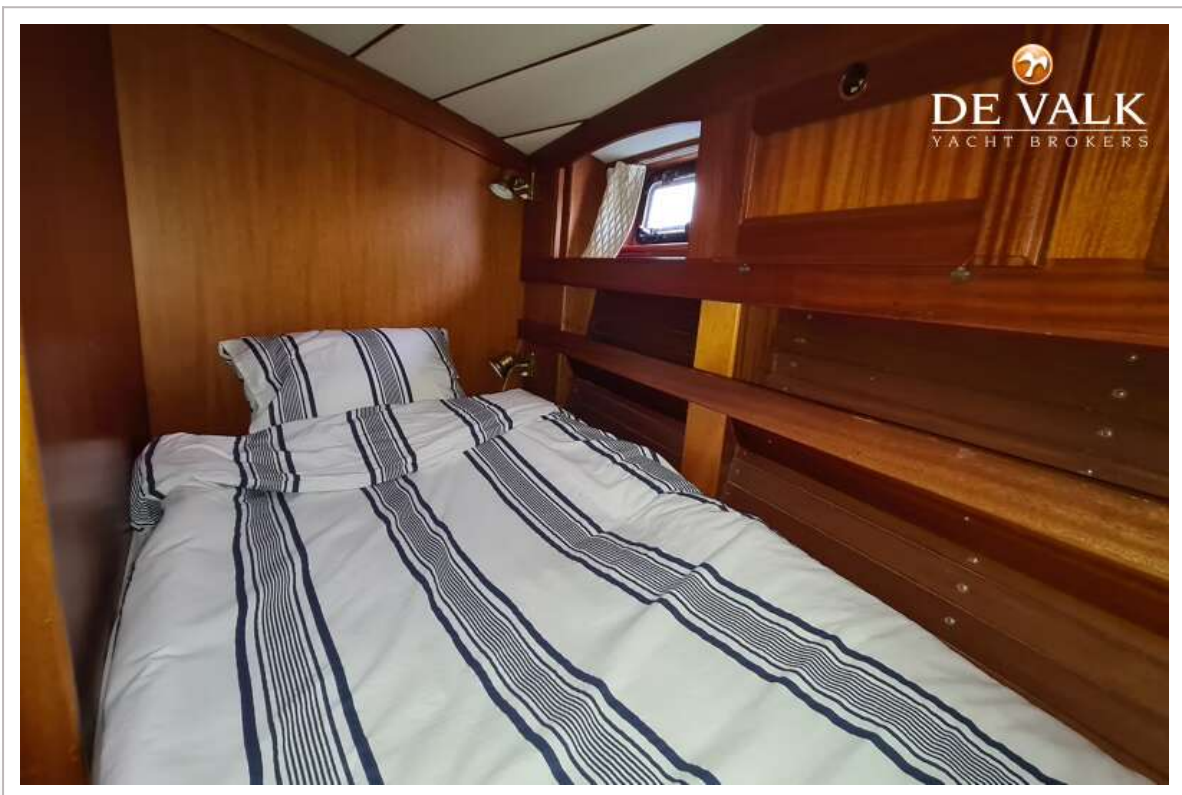
# NAJAD 440 CC



# NAJAD 440 CC

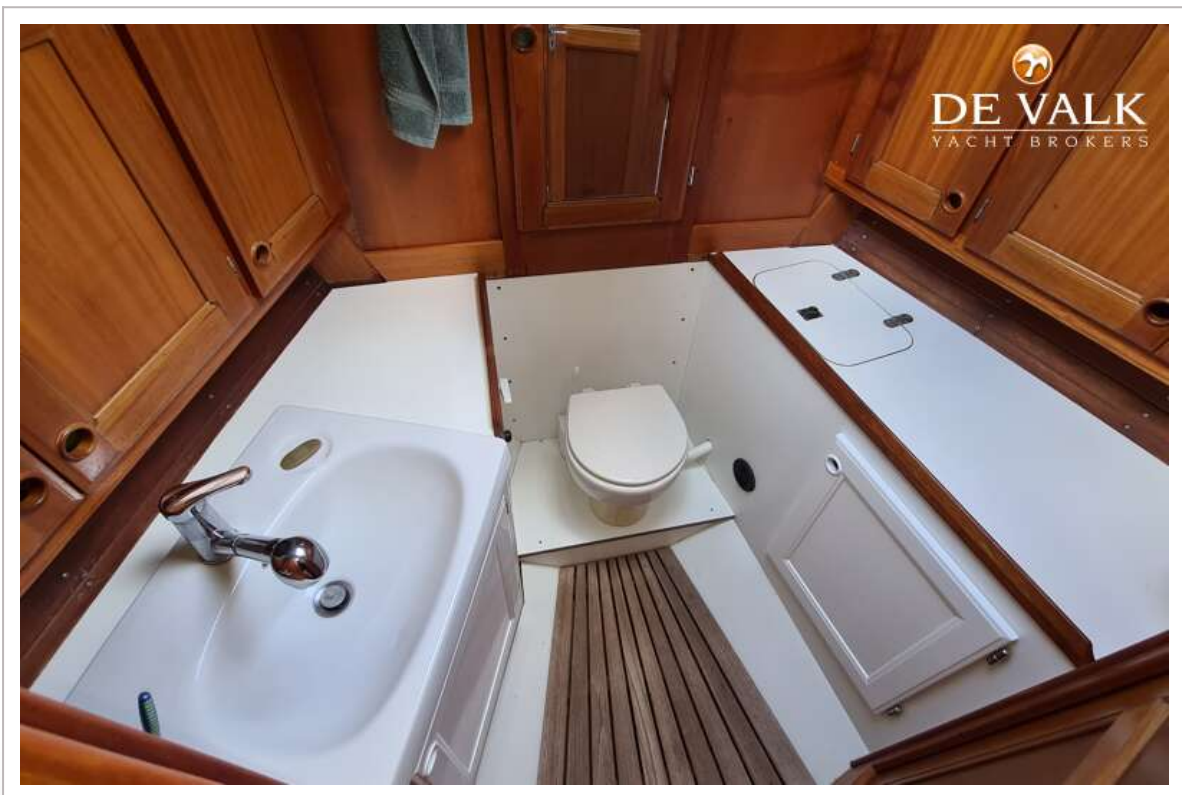


# NAJAD 440 CC

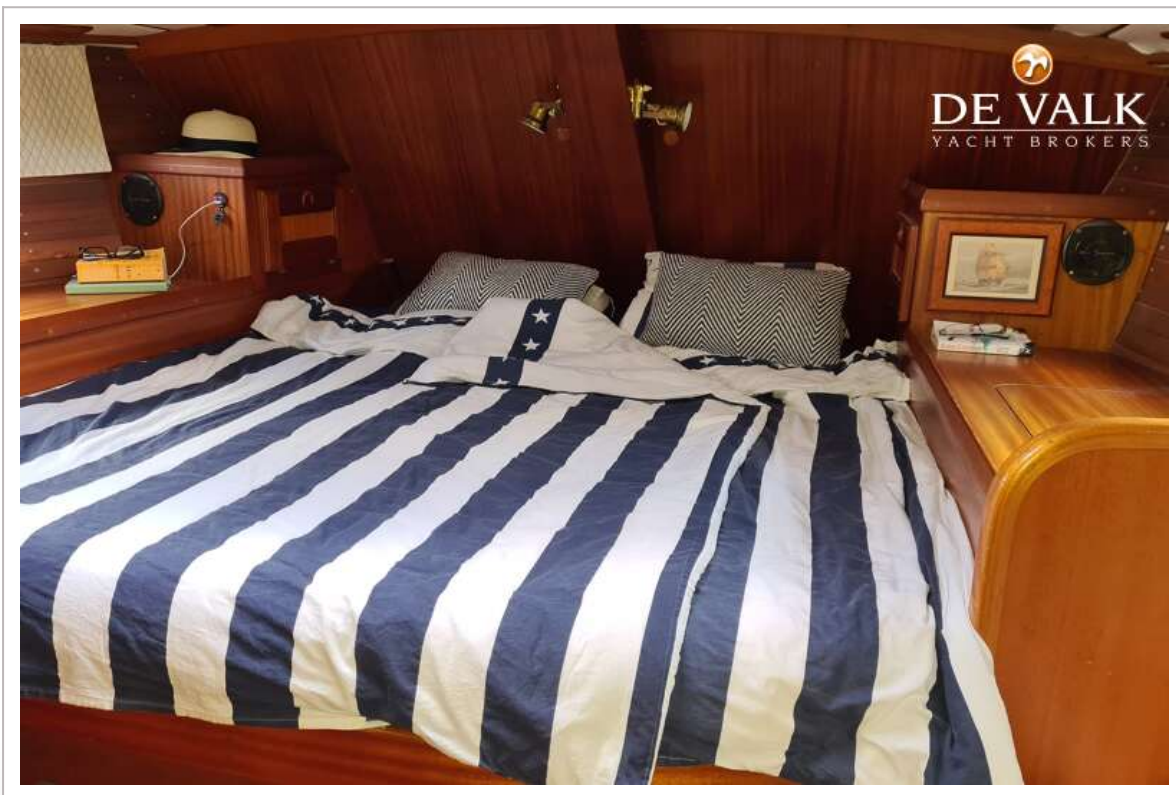




# NAJAD 440 CC



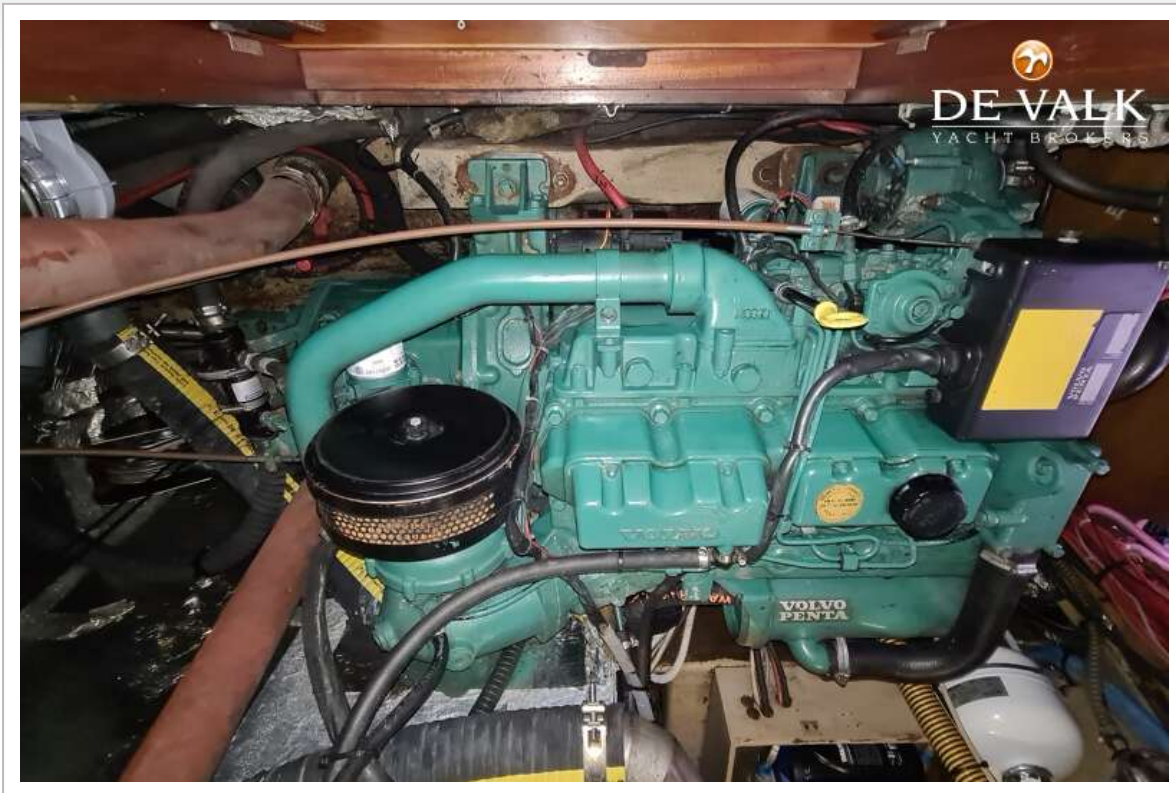
# NAJAD 440 CC



# NAJAD 440 CC



# NAJAD 440 CC



## Najad 440



2 cabins... /... 2 cabins

