



DE VALK
YACHT BROKERS



TAYANA 41-2



DE VALK
YACHT BROKERS

TAYANA 41-2

BROKER'S COMMENTS

Tayana 41+2, ocean going, designed by the famous Pieter Beeldsnijder, built in 1980. Large owners cabin with private bathroom, two guest cabins with bunkbed and shared bathroom with toilet and washbowl. Powered with two Volvo Penta diesel engines and electric bowthruster. Come over to our sales marina in Monnickendam for a viewing of this GRP trawler.

Reinier van der Wolf

SPECIFICATIONS

Dimensions	13.80 x 4.54 x 1.35 (m)	Builder	Tayana Yachts
Built	1980	Cabins	3
Material	GRP	Berths	6
Engine(s)	2 x Volvo Penta TAM70D diesel	Hp/Kw	2 x 267.00 (hp), 196.51 (kw)
Asking price	€ 99.000 (VAT Exempt)	Lying	at sales office

CONTACT

Sales office	De Valk Monnickendam	Telephone	+31 299 65 63 50
Address	Hoogedijk 6 1145 PM Katwoude The Netherlands	E-mail	monnickendam@devalk.nl

DISCLAIMER

These particulars are given in good faith as supplied but cannot be guaranteed.



GENERAL

Model	TAYANA 41-2
Type	motor yacht
LOA (m)	13,80
LWL (m)	12,50
Beam (m)	4,54
Draft (m)	1,35
Air draft min (m)	4,20
Year built	1980
Launched	1981
Builder	Tayana Yachts
Country	Taiwan
Designer	Pieter Beeldsnijder
Displacement (t)	20
CE norm	NA
Hull material	GRP
Hull colour	white
Hull shape	deep-V
Superstructure material	GRP
Rubbing strake	wood + stainless steel
Deck material	GRP
Deck finish	teak
Superstructure deck finish	teak
Cockpit deck finish	teak (aft deck finish)
Antifouling (year)	needs maintenance
Dorades	2x stainless steel
Window frame	aluminium Hora Stralite, brown colored
Window material	tempered glass
Deckhatch	3x Lewmar deckhatch
Portholes	aluminium
Flybridge	yes



TAYANA 41-2

Flybridge suncover	Bimini over the steering position on the flybridge
Mast can be lowered	manual Radar arch
Fuel tank (litre)	A total of approx. 1600 litre. (2 x approx. 800L)
Fuel tank 2 (litre)	yes
Level indicator (fuel tank)	VDO
Freshwater tank (litre)	Approx. 800 L.
Level indicator (freshwater)	Unirex
Blackwater tank (litre)	Approx. 60 L.
Blackwater tank extraction	deck extraction + uw line
Greywater tank (litre)	Approx. 160 L.
Wheel steering	hydraulic
Inside helm position	yes
Flybridge helm position	hydraulic
Extra info	diesel tanks cleaned in 2024.

ACCOMMODATION

Cabins	3
Berths	6
Interior	teak
Floor	teak and holly & carpet
Aft deck	yes
Saloon	yes
Heating	diesel ducted hot air Webasto Air Top 5000 D
Chart table	yes
Sliding door to cockpit	PS & SB sliding door to the sideways
Galley	at PS
Countertop	Formica
Sink	2 x sink
Cooker	calor gas Scholtes 4-burner
Extractor	yes
Fridge	Waeco



TAYANA 41-2

Freezer	Waeco
Hot water system	220V + engine Rheinstrom boiler
Water pressure system	electrical
Owners cabin	French bed With dressingtable
Bed length (m)	190 x 160 cm
Wardrobe	hanging/drawers/shelves
Bathroom	en suite
Toilet	yes
Toilet system	electric Matromarine Idrosystem
Wash basin	yes
Shower	yes
Guest cabin 1	bunk bed
Wardrobe	hanging and shelves
Guest cabin 2	bunk bed
Wardrobe	hanging and shelves
Bathroom	shared
Toilet	shared Rheinstrom manual toilet
Toilet system	manual
Wash basin	in the bathroom
Shower	yes

MACHINERY

No of engines	2
Make	Volvo Penta
Type	TAMD70D
HP	267
kW	196.51
Fuel	diesel
Maximum speed (kn)	9
Cruising speed (kn)	7
Engine hours	4223 / 4249



TAYANA 41-2

Engine cooling system	freshwater heat exchanger
Drive	shaft
Engine controls	bowden cable Morse MT2
Gearbox	hydraulic
Bowthruster	electric
Exhaust	watercooled
Thrust bearing	yes
Propeller type	fixed
Propeller blades	4
Propeller shaft material	stainless steel
Shaft lubrication	water - 2014
Manual bilge pump	yes
Electric bilge pump	yes
Generator	Fisher Panda AGT-4000
Batteries	2x VMF SportlineRV 12v/200Ah + 2x Victron AGM 12v/220Ah
Generator battery	1x 60 ah (2024)
Battery monitor	Victron Energy
Battery charger	Victron Skyla-TG 24v/50a + LEAB 12/8a for the generator battery
Inverter	Victron Phoenix 24v/3000w
Diode battery combiners	yes
Shorepower	with cable
Extra info	The fuel tanks and fuel lines are cleaned (02-2024). The Volvo engines and Fisher Panda generator are serviced (02-2024)

NAVIGATION

Electric compass	VDO electric compass
Depth sounder	Aquatonic
Log	Aquatonic
VHF	Shipmate RS8300
VHF handheld	Horizon HX270E
Autopilot	Cetrek pilot 701



Rudder angle indicator	VDO
Radar	Simrad
Radar/plotter	Simrad CX34 plotter (LCD screen is faded) + radar dome
Navigation lights	yes

EQUIPMENT

Bimini	On flybridge
Cockpit cushions	For the flybridge
Cockpit table	Teak table on the afdeck.
Bathing platform	yes
Boarding ladder	stainless steel
Anchor	CQR Plough
Anchor chain	yes
Windlass	electrical
Deck wash	yes
Davits	stainless steel Simpson Davits model 100, 100KG
Davits controls	manual
Sea railing	teak
Railing side opening gates	2x
Pushpit	yes
Pulpit	yes
Life raft	container Need service
Wiper	5x
Horn	yes
Radar reflector	yes
Fenders	yes
Mooring lines	yes
TV	Salora tv
Radio-cd player	Sony CDX-R30 Marine
Cockpit speakers	yes
Speakers in salon	yes



Clock - barometer

Schatz clock and barometer.



TAYANA 41-2



TAYANA 41-2



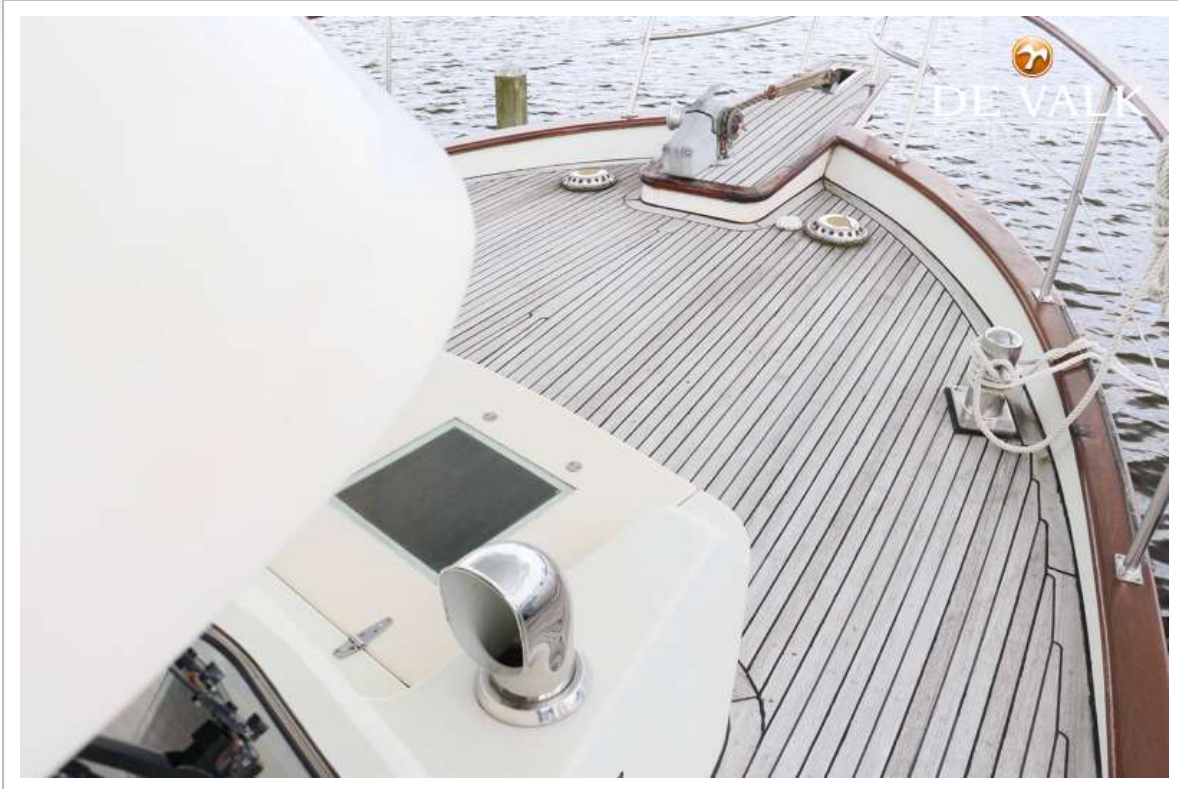
TAYANA 41-2



TAYANA 41-2



TAYANA 41-2



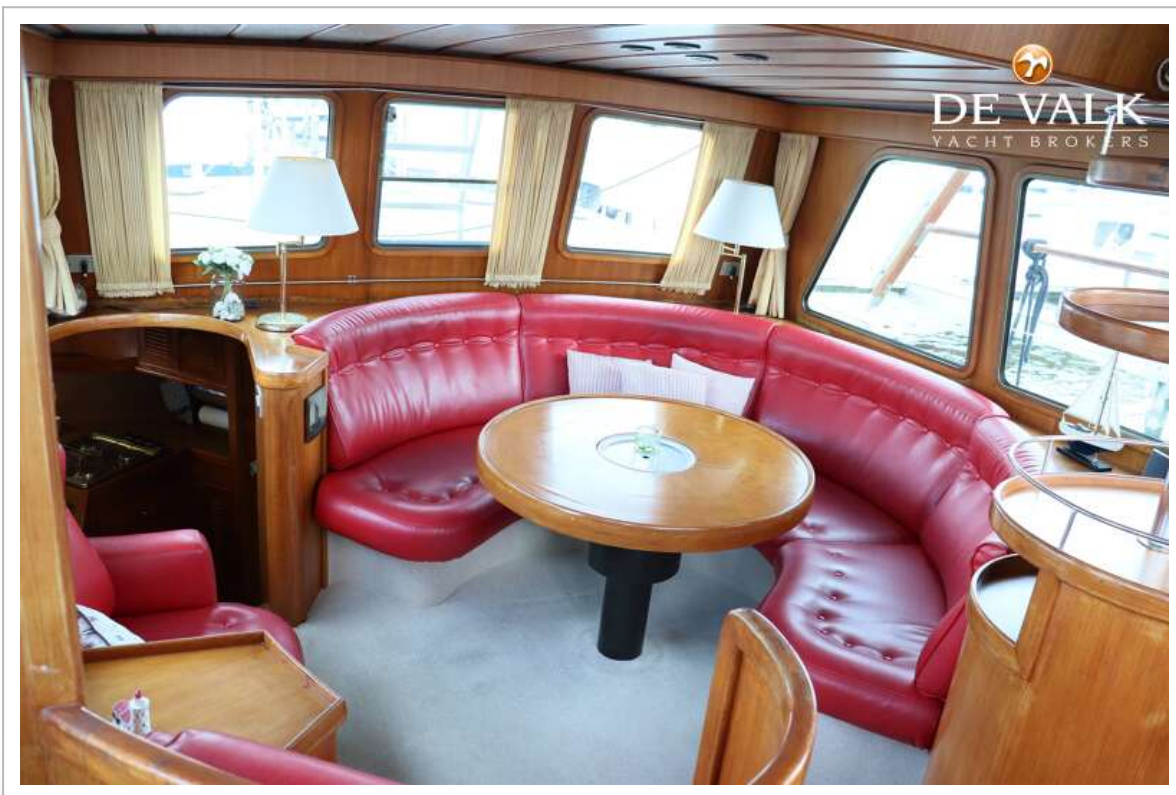
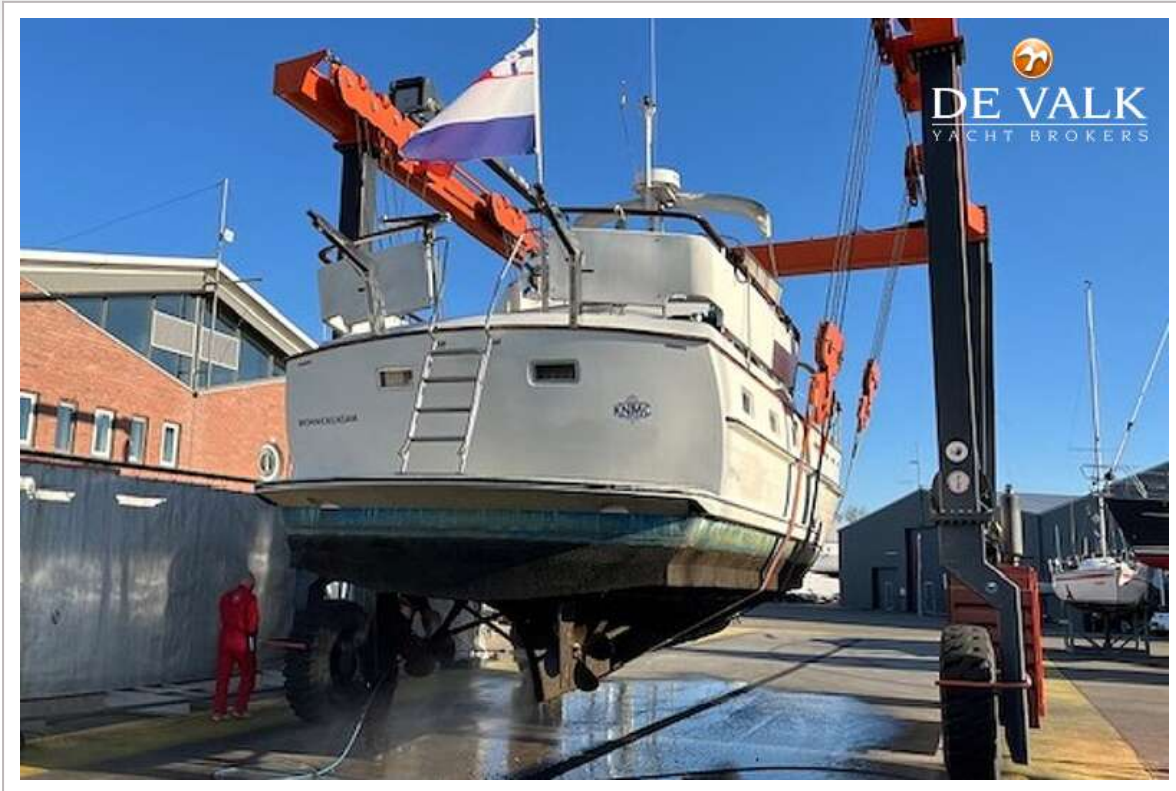
TAYANA 41-2



TAYANA 41-2



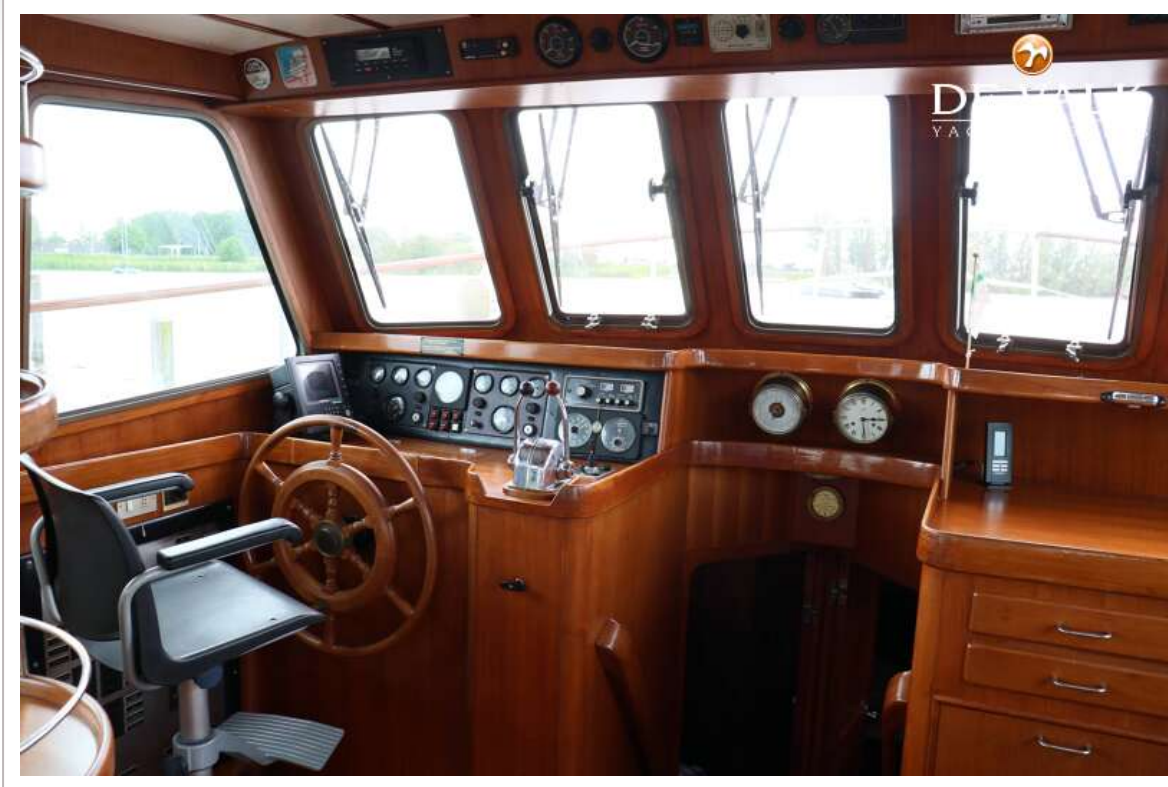
TAYANA 41-2



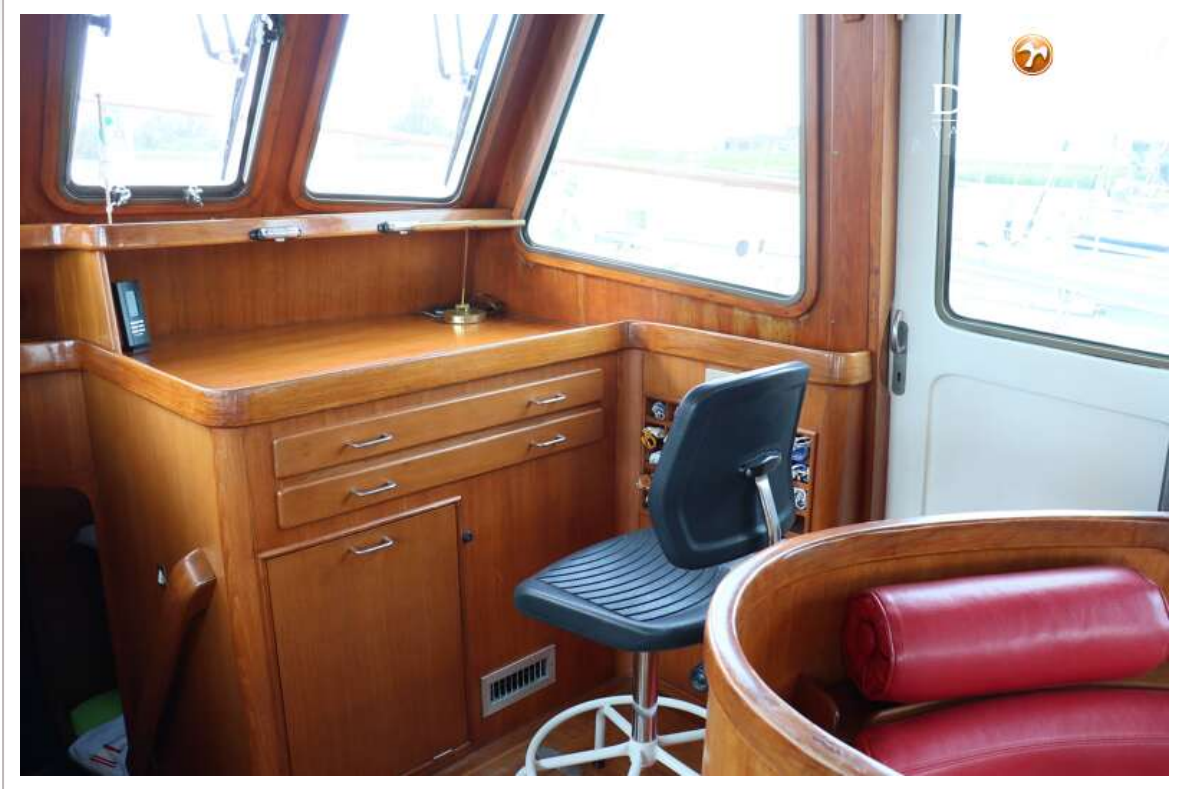
TAYANA 41-2



TAYANA 41-2



TAYANA 41-2



TAYANA 41-2



TAYANA 41-2



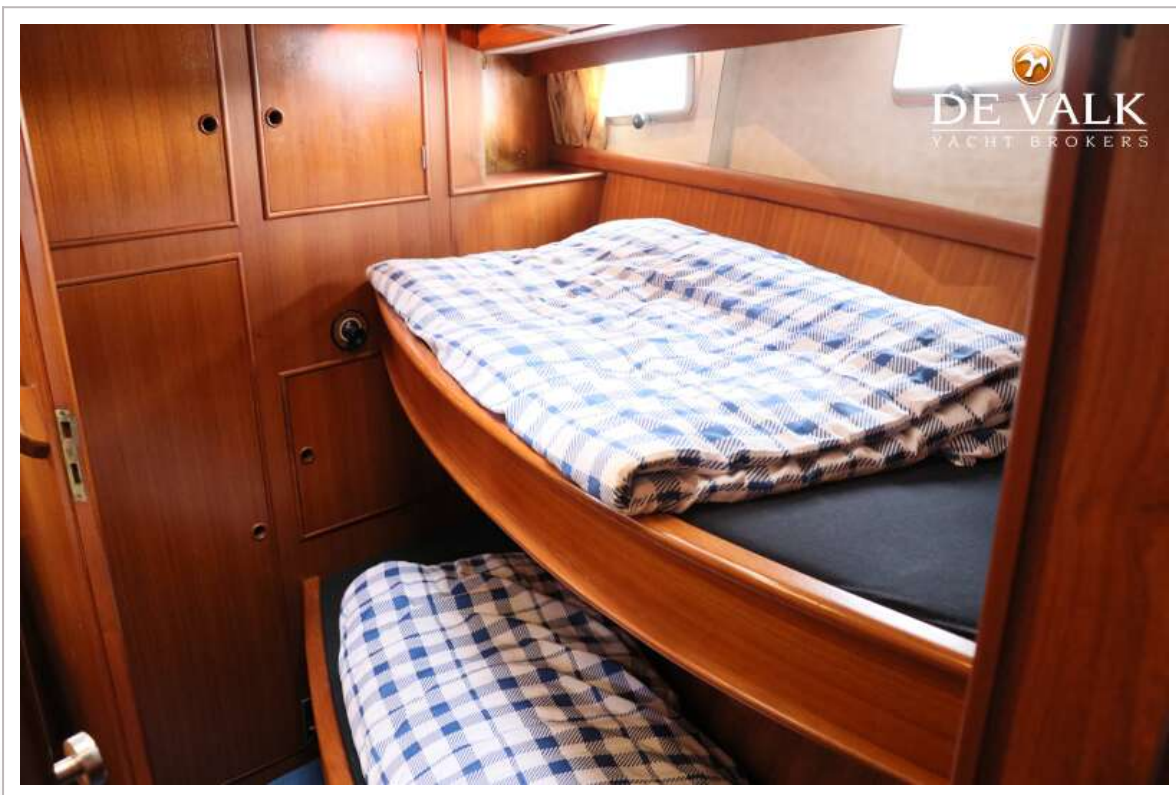
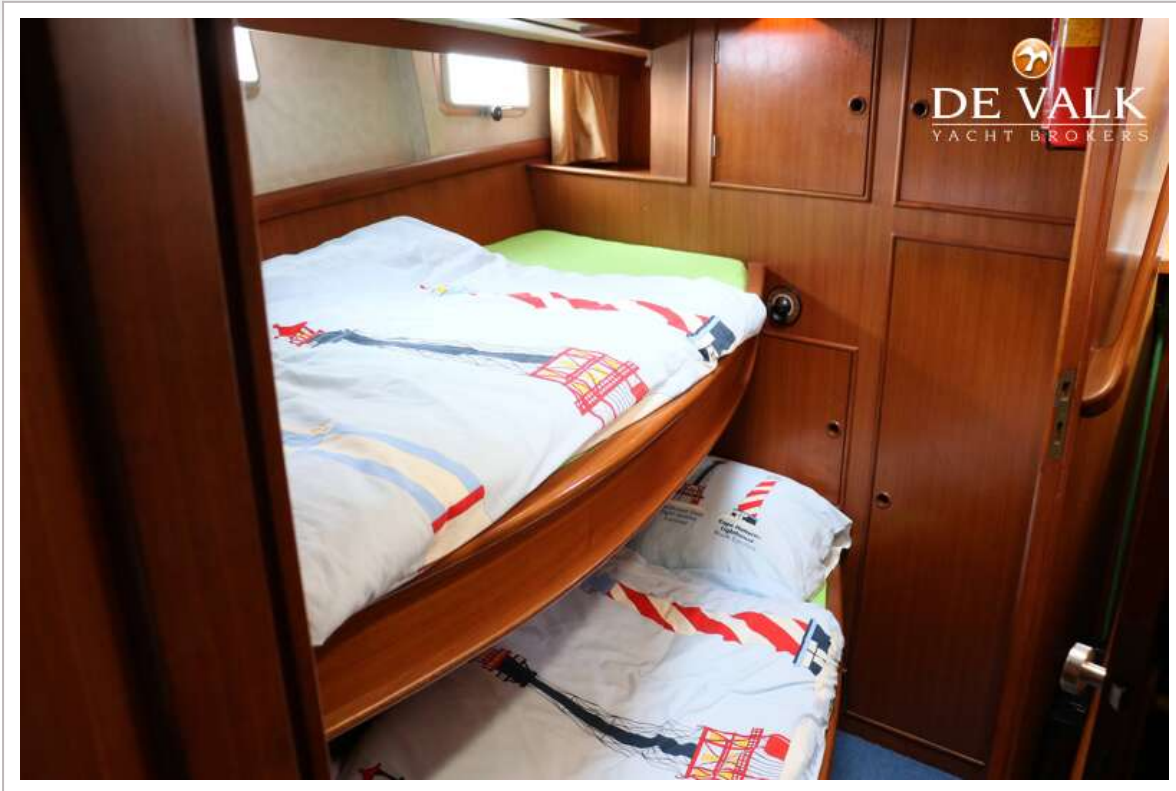
TAYANA 41-2



TAYANA 41-2



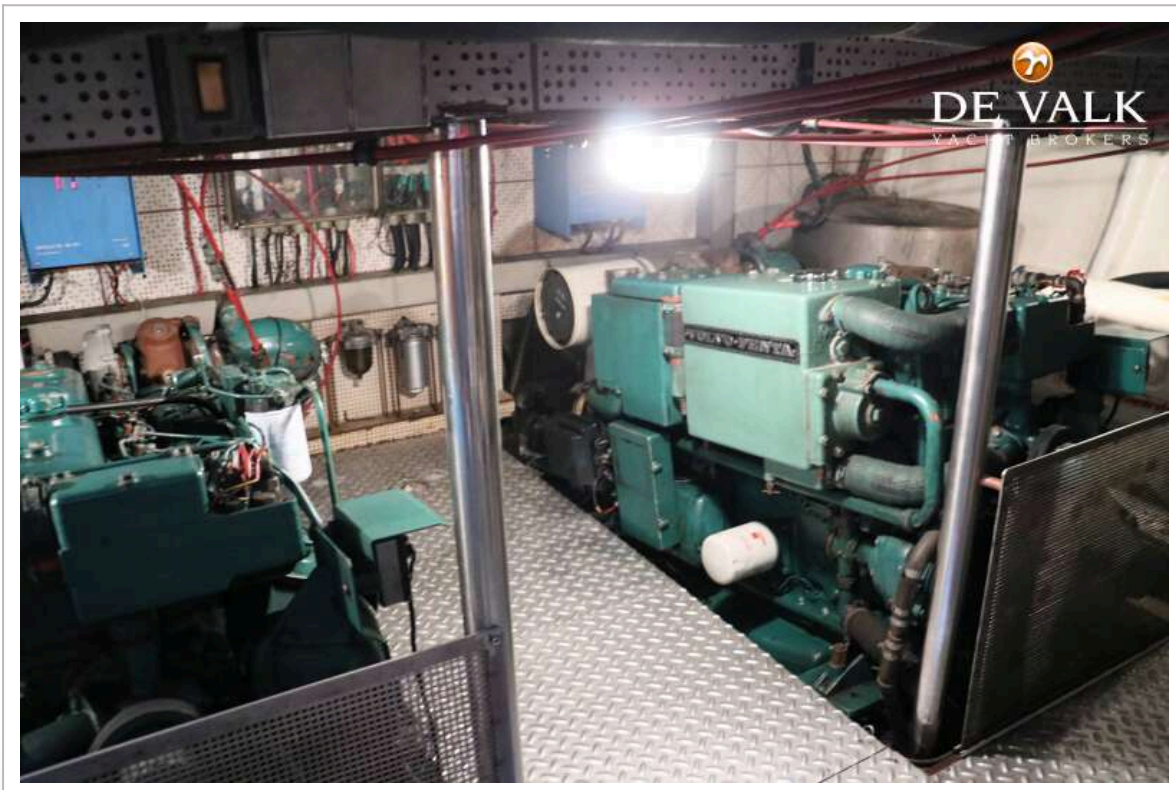
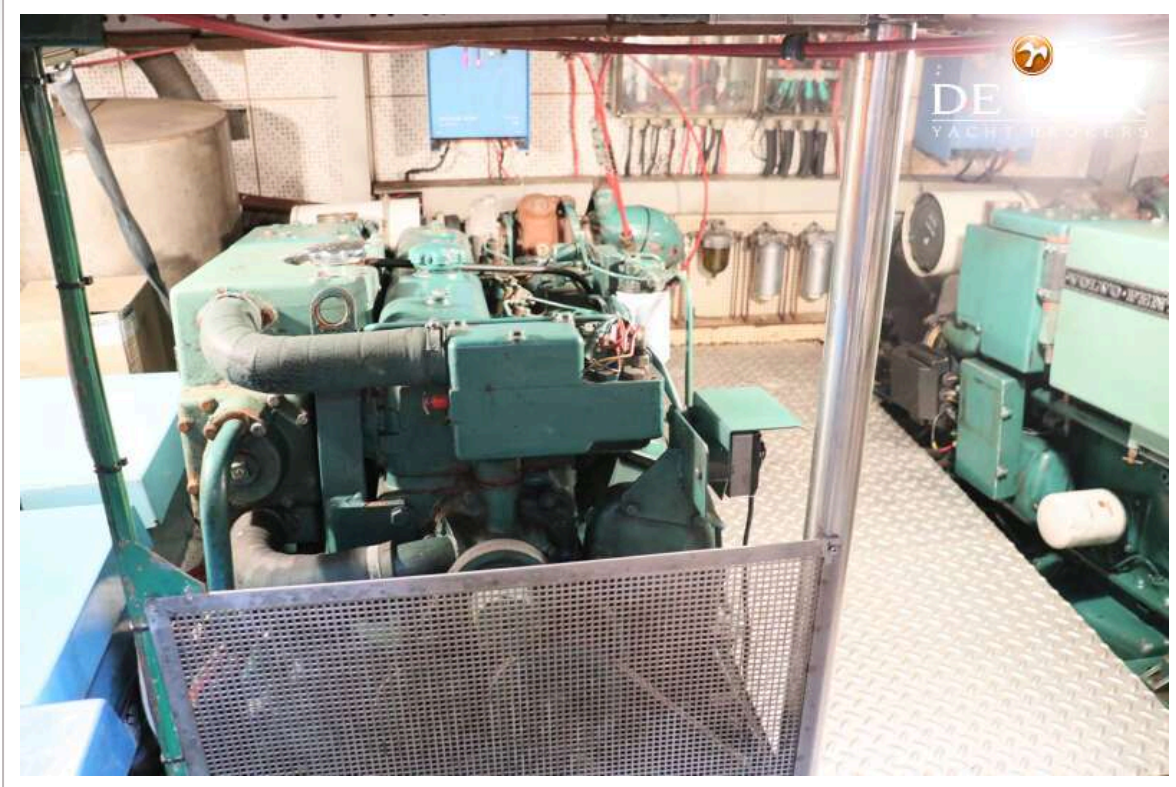
TAYANA 41-2



TAYANA 41-2



TAYANA 41-2



TAYANA 41-2



