



DE VALK  
YACHT BROKERS



NICHOLSON 40 AC



DE VALK  
YACHT BROKERS

# NICHOLSON 40 AC

## BROKER'S COMMENTS

Nicholson 40 AC "Raffles" is hull number 3 of 20 of these well known S bilge full skeg heavy displacement sailing yachts ever built. The Nicholson 40 AC provides rare and wonderful opportunity to purchase a very stylish yacht that has been exceptionally well built for serious blue water cruiser providing a comfortable accommodation for 6 people. appreciate!

*Hans Visser*

## SPECIFICATIONS

<b>Dimensions</b>	12.19 x 3.51 x 1.75 (m)	<b>Builder</b>	CAMPER & NICHOLSON LTD.
<b>Built</b>	1979	<b>Cabins</b>	2
<b>Material</b>	GRP	<b>Berths</b>	7
<b>Engine(s)</b>	1 x Perkins Prima M50 diesel	<b>Hp/Kw</b>	58.00 (hp), 42.69 (kw)
<b>Asking price</b>	€ 59.000 (VAT Paid)	<b>Lying</b>	at sales office

## CONTACT

<b>Sales office</b>	De Valk Hindeloopen	<b>Telephone</b>	+31 514 52 40 00
<b>Address</b>	Oosterstrand 1 8713 JS Hindeloopen The Netherlands	<b>E-mail</b>	hindeloopen@devalk.nl

## DISCLAIMER

These particulars are given in good faith as supplied but cannot be guaranteed.



# NICHOLSON 40 AC

## GENERAL

<b>Model</b>	NICHOLSON 40 AC
<b>Type</b>	sailing yacht
<b>LOA (m)</b>	12,19
<b>Beam (m)</b>	3,51
<b>Draft (m)</b>	1,75
<b>Headroom (m)</b>	1,90
<b>Year built</b>	1979
<b>Builder</b>	CAMPER & NICHOLSON LTD.
<b>Country</b>	United Kingdom
<b>Designer</b>	Camper & Nicholson
<b>Displacement (t)</b>	11
<b>CE norm</b>	NA
<b>Hull material</b>	GRP
<b>Hull colour</b>	Light blue
<b>Hull shape</b>	S-bilged
<b>Keel type</b>	fin keel
<b>Superstructure material</b>	GRP
<b>Deck material</b>	GRP
<b>Deck finish</b>	non-skid paint
<b>Superstructure deck finish</b>	non-skid paint
<b>Cockpit deck finish</b>	teak
<b>Dorades</b>	4x Vetus dorades
<b>Window frame</b>	stainless steel
<b>Window material</b>	tempered glass
<b>Deckhatch</b>	6x
<b>Portholes</b>	aluminium 1x
<b>Fuel tank (litre)</b>	steel Approx. 246 ltr.
<b>Freshwater tank (litre)</b>	steel Approx. 322 ltr.
<b>Wheel steering</b>	chain steering
<b>Outside helm position</b>	Stainless steel wheel



## ACCOMMODATION

<b>Cabins</b>	2
<b>Berths</b>	7
<b>Interior</b>	mahogany
<b>Layout</b>	Classic
<b>Floor</b>	teak and holly
<b>Open cockpit</b>	yes
<b>Saloon</b>	yes
<b>Headroom saloon (m)</b>	1,90 mtr.
<b>Navigation center</b>	yes
<b>Chart table</b>	yes
<b>Sliding door to cockpit</b>	yes
<b>Galley</b>	yes
<b>Countertop</b>	wood   Pointed
<b>Sink</b>	stainless steel   Double
<b>Cooker</b>	calor gas Techimpex   3 burner   Cardanic
<b>Oven</b>	In cooker
<b>Fridge</b>	Danfoss
<b>Hot water system</b>	220V + engine
<b>Water pressure system</b>	electrical SPX-flow pump
<b>Owners cabin</b>	v-bed
<b>Bed length (m)</b>	1,87x1,95 mtr.
<b>Wardrobe</b>	hanging and drawers
<b>Bathroom</b>	shared
<b>Toilet</b>	shared
<b>Toilet system</b>	manual
<b>Wash basin</b>	in the bathroom
<b>Guest cabin 1</b>	double bed
<b>Bed length (m)</b>	1,90x1,20 mtr.
<b>Wardrobe</b>	hanging and drawers
<b>Bathroom</b>	shared



Toilet shared

## MACHINERY

No of engines	1
Make	Perkins
Type	Prima M50
HP	58
kW	42.69
Fuel	diesel
Year installed	1999
Maximum speed (kn)	7
Cruising speed (kn)	6
Engine hours	1994
Engine cooling system	seawater
Drive	shaft
Shaft seal	yes
Engine controls	bowden cable
Gearbox	mechanical
Propeller shaft material	stainless steel
Shaft lubrication	grease
Manual bilge pump	yes
Electric bilge pump	yes
Electrical installation	12/230V
Batteries	3x
Start battery	Yuasa M31-100 100Ah 12V
Service battery	2x Yuasa YBX3663 112Ah 12V
Battery monitor	Renaud
Battery charger	Victron pallas 12/25 12V 25A
Shorepower	with cable

## NAVIGATION



<b>Compass</b>	Richie Compas
<b>Depth sounder</b>	Data on: Autohelm St 50 Depth lcd screen
<b>Log</b>	Data on: Autohelm St 50 Speed lcd screen
<b>Windset</b>	Data on: Autohelm St 50 Wind lcd screen
<b>VHF</b>	Shipmate RS 8300
<b>Autopilot</b>	Autohelm ST7000
<b>GPS</b>	Raymarine
<b>Plotter</b>	Raymarine C90W

## EQUIPMENT

<b>Sprayhood</b>	yes
<b>Cockpit cushions</b>	yes
<b>Anchor</b>	20,5 KG
<b>Anchor chain</b>	Galvanized steel
<b>Windlass</b>	electrical
<b>Sea railing</b>	wire
<b>Grab rail (superstructure)</b>	teak
<b>Railing side opening gates</b>	yes
<b>Pushpit</b>	Stainless steel
<b>Pulpit</b>	Stainless steel
<b>Life raft</b>	yes
<b>Lifebuoy</b>	2x Plastimo
<b>Fenders</b>	yes
<b>Mooring lines</b>	yes
<b>Radio</b>	Sony DSX530BTX
<b>Cockpit speakers</b>	2x JVC
<b>Speakers in salon</b>	Pioneer 3 way TS-E1799 150W

## RIGGING

<b>Rigging</b>	ketch
<b>Standing rigging</b>	wire



<b>Material mast</b>	aluminium
<b>Spreaders</b>	2 sets
<b>Keel stepped mast</b>	yes
<b>Mainsail</b>	North sails
<b>Mainsail cover</b>	yes
<b>Fully battened mainsail</b>	yes
<b>Mizzen</b>	2022   North sails
<b>Mizzen sailcover</b>	yes
<b>Genoa</b>	yes
<b>Genoa furler</b>	Harken Furler
<b>Reefing System</b>	slabreefing
<b>Boomvang</b>	mechanical
<b>Genoa sheetwinches</b>	2x Lewmar 48 self tailing two speed
<b>Spinnaker winch</b>	1x Lewmar 40 two speed   2 x Lewmar 30 two speed self tailing
<b>Reefing winch</b>	1x Lewmar 8 one speed
<b>Multifunctional winches</b>	1x Lewmar 8 one speed   2x Lewmar 16 two speed self tailing
<b>Spi-pole</b>	aluminium



# NICHOLSON 40 AC





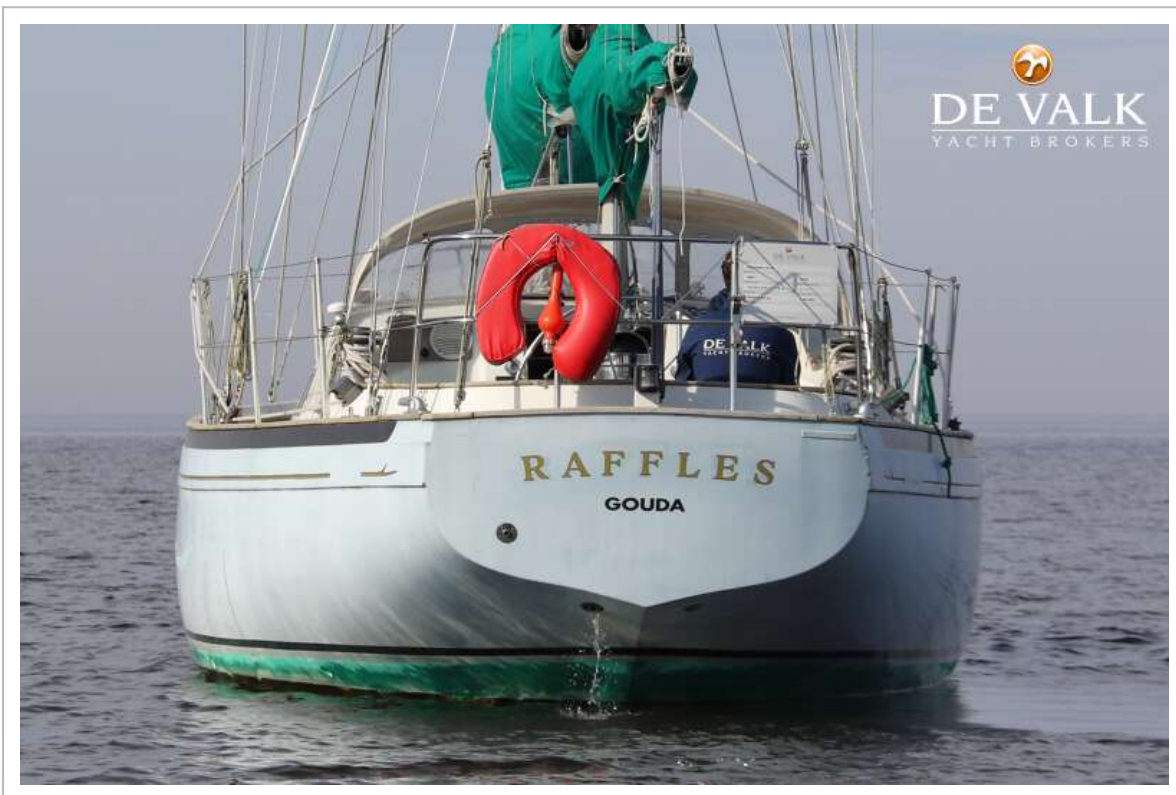
# NICHOLSON 40 AC



# NICHOLSON 40 AC



# NICHOLSON 40 AC



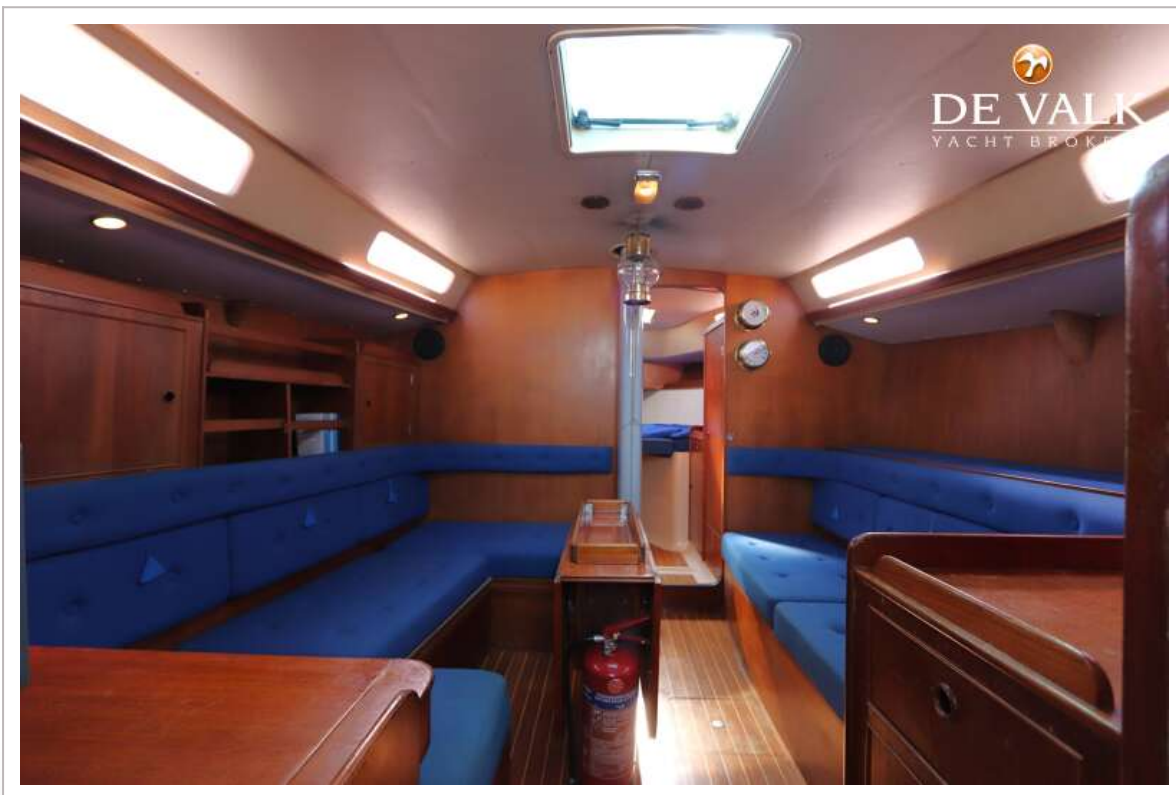
# NICHOLSON 40 AC



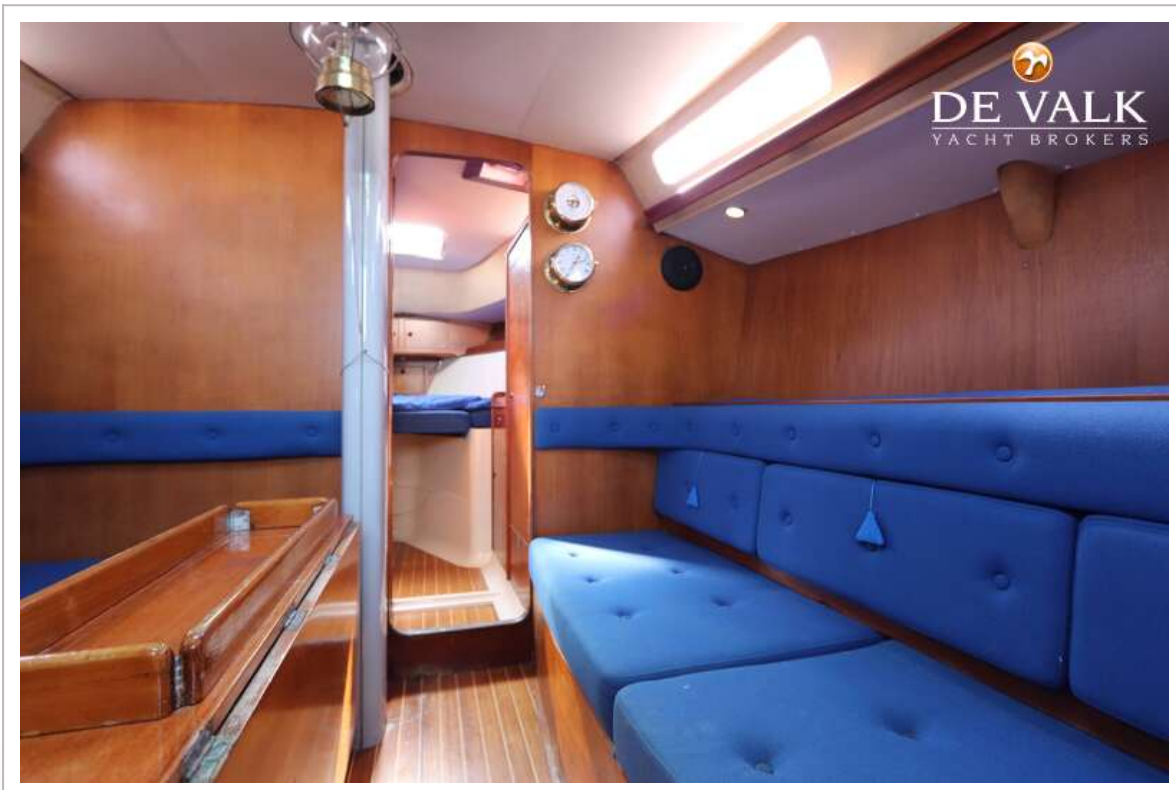
# NICHOLSON 40 AC



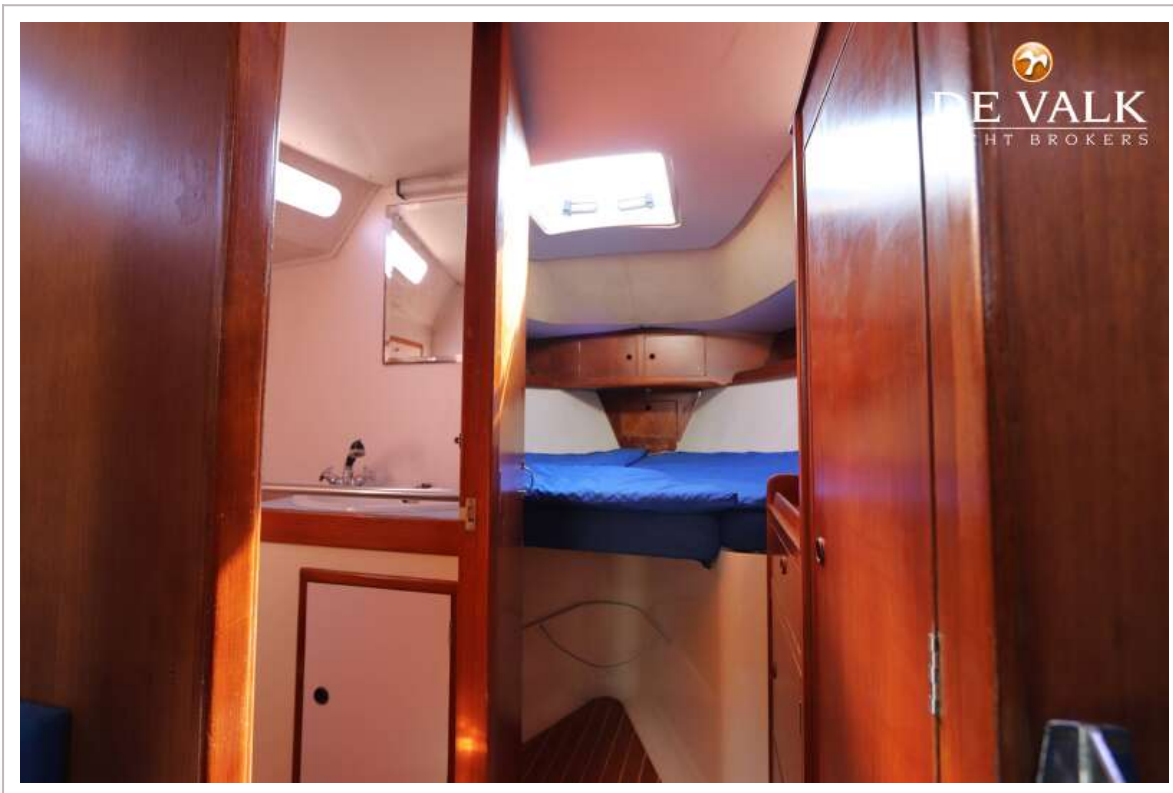
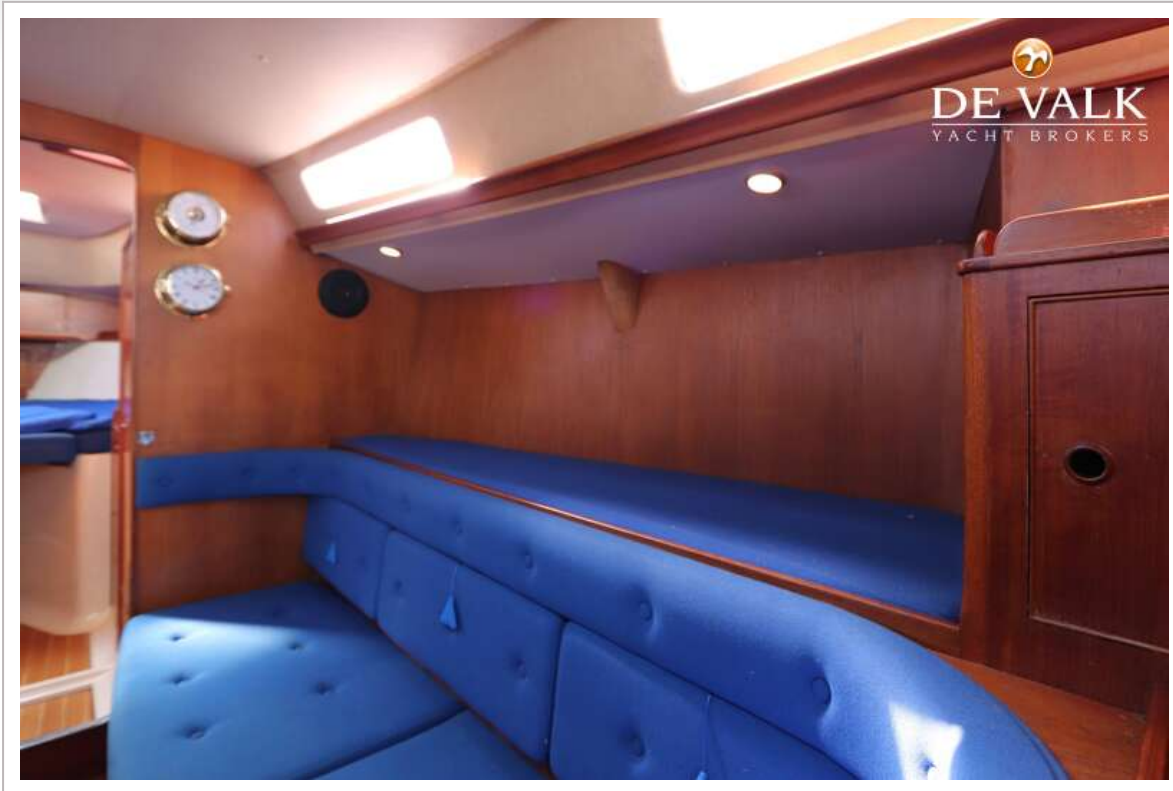
# NICHOLSON 40 AC



# NICHOLSON 40 AC

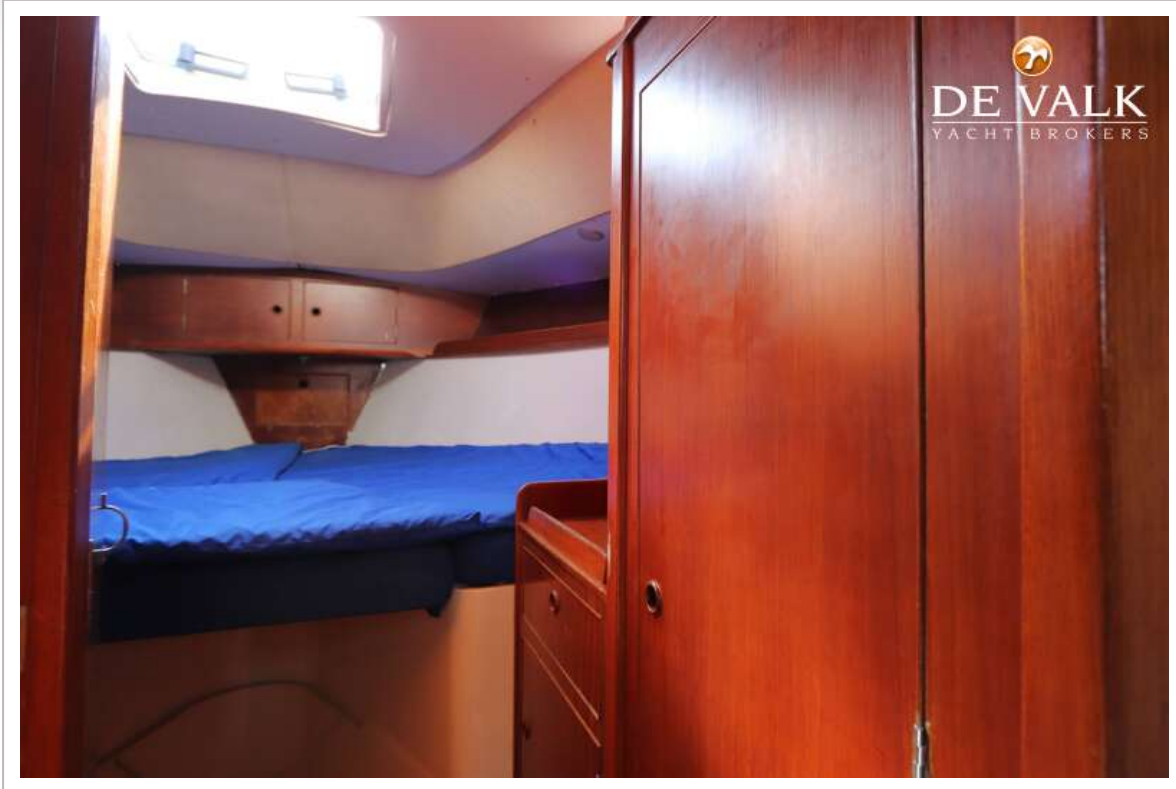


# NICHOLSON 40 AC

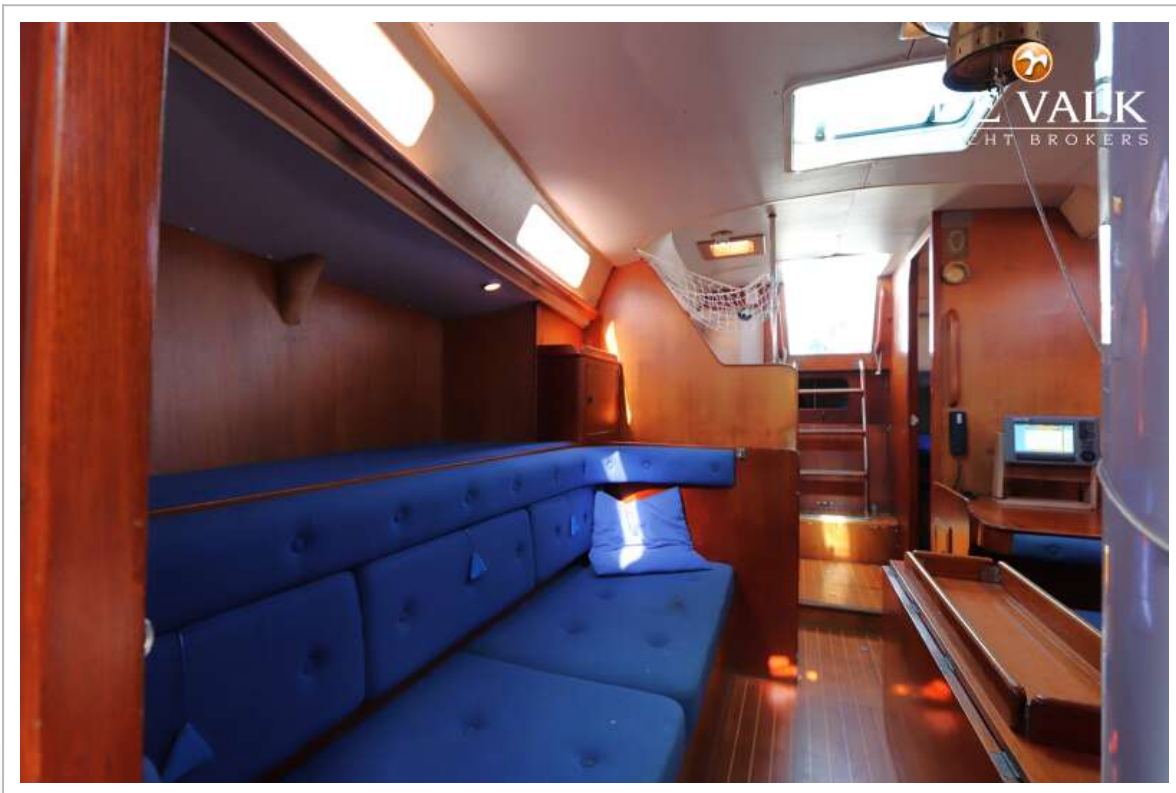
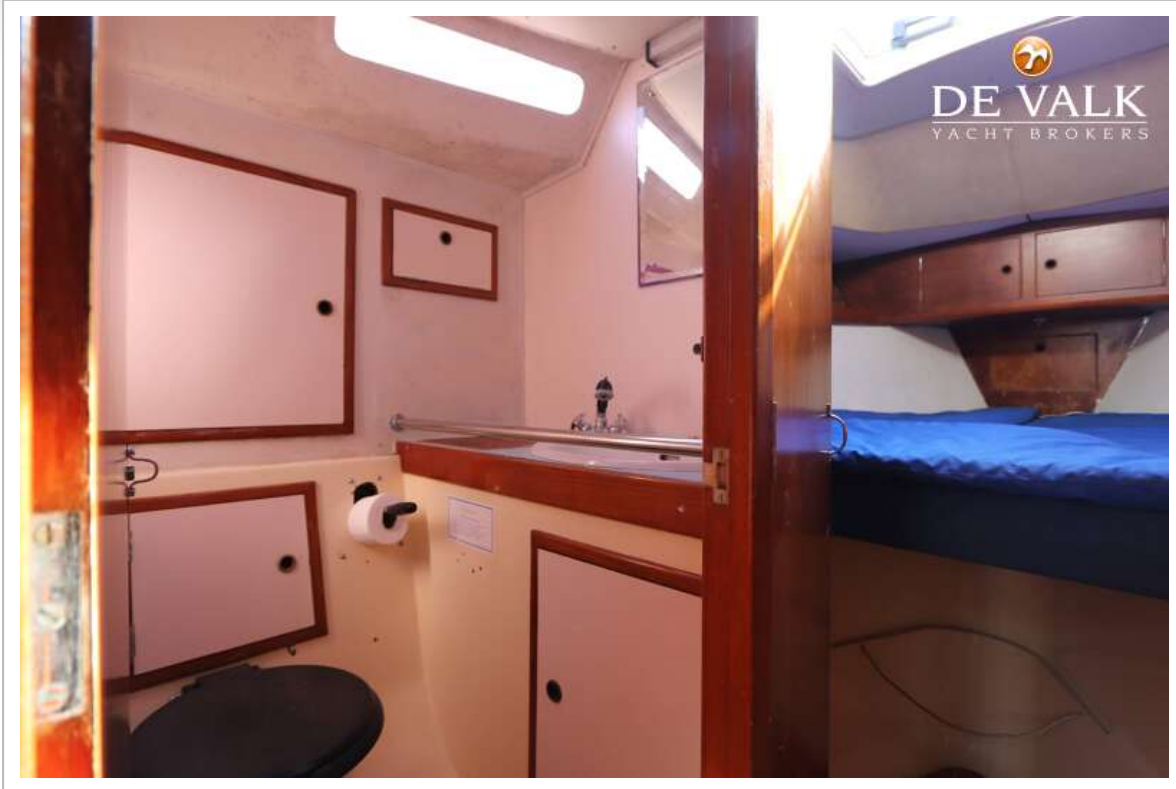




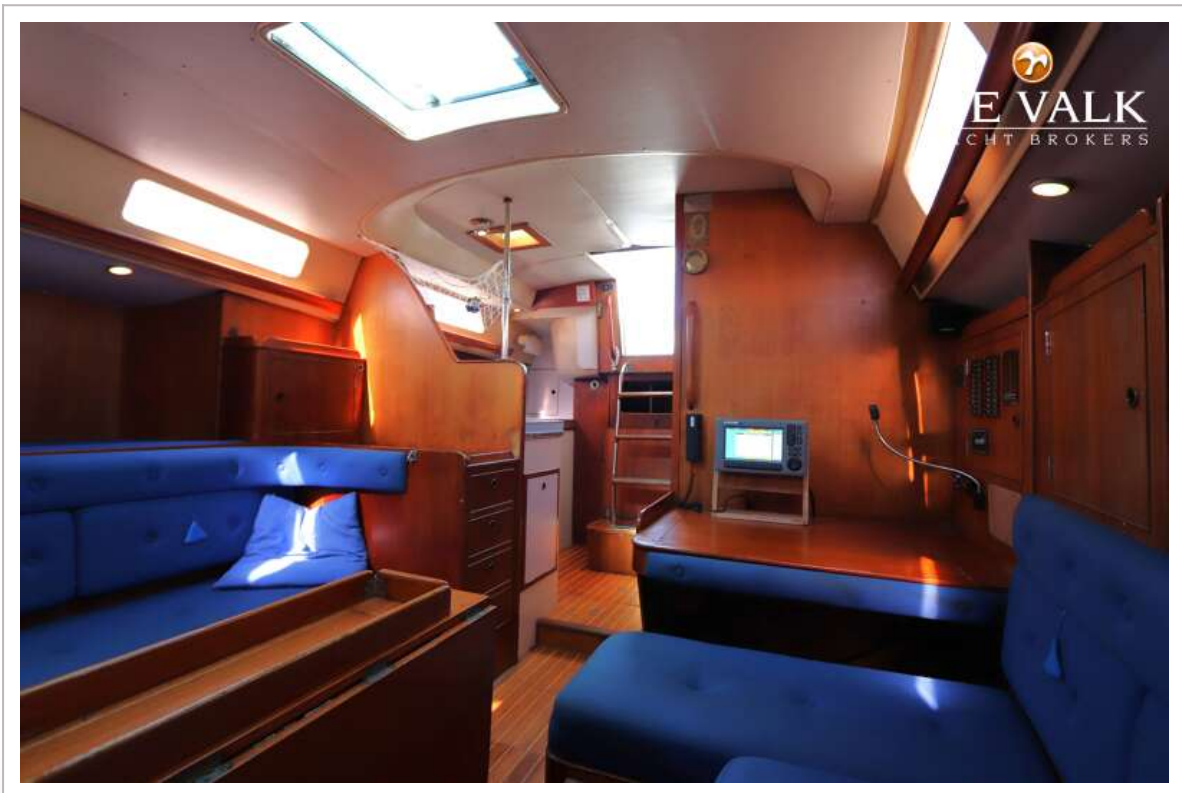
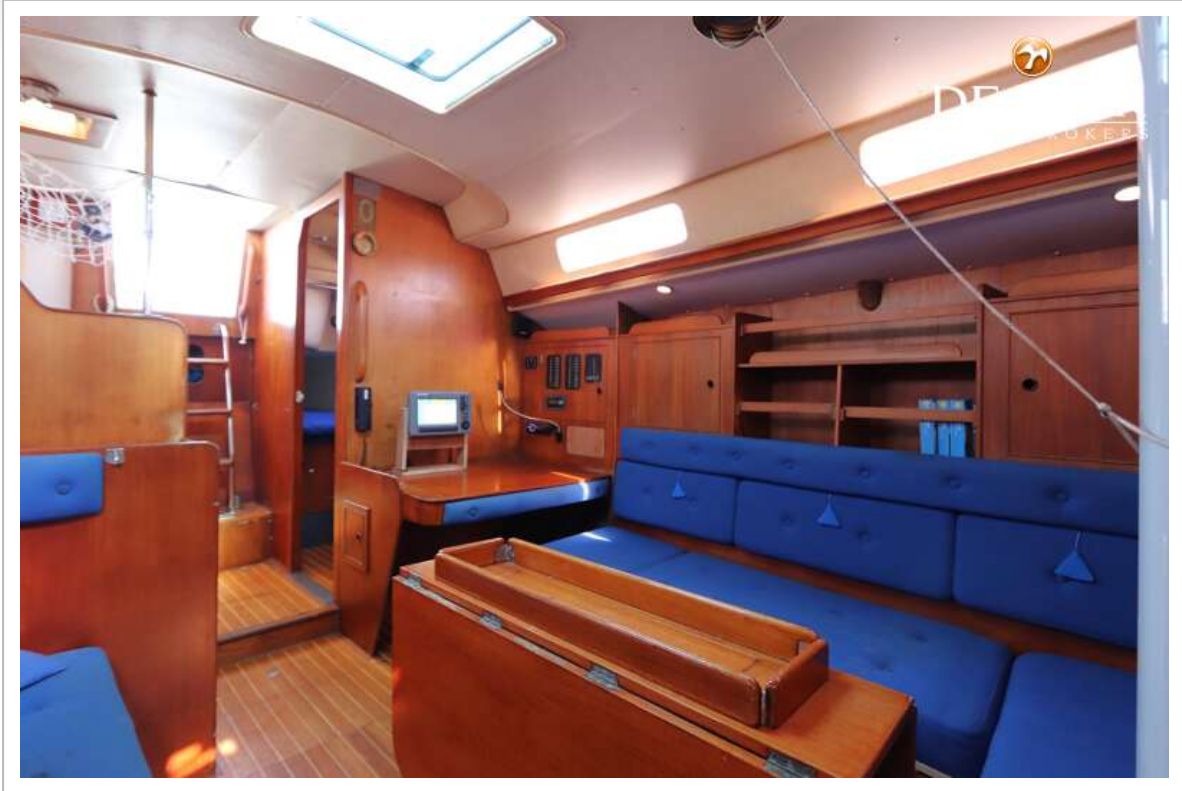
# NICHOLSON 40 AC



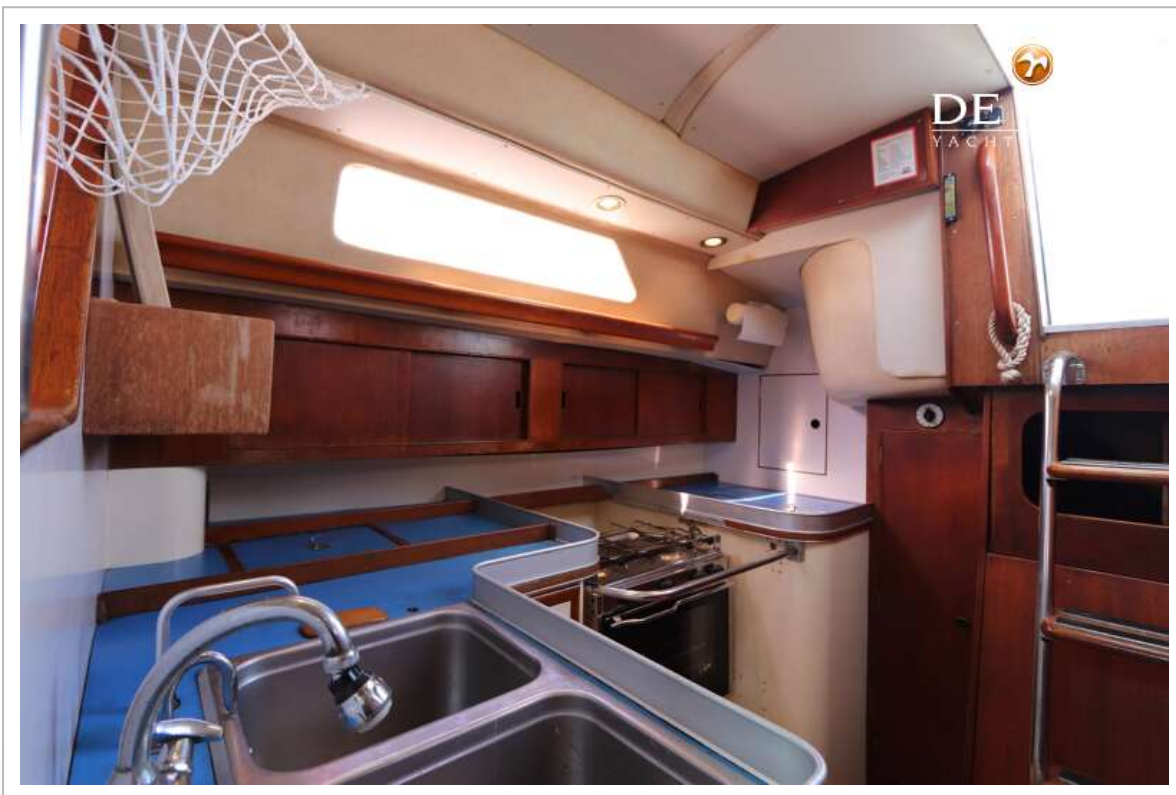
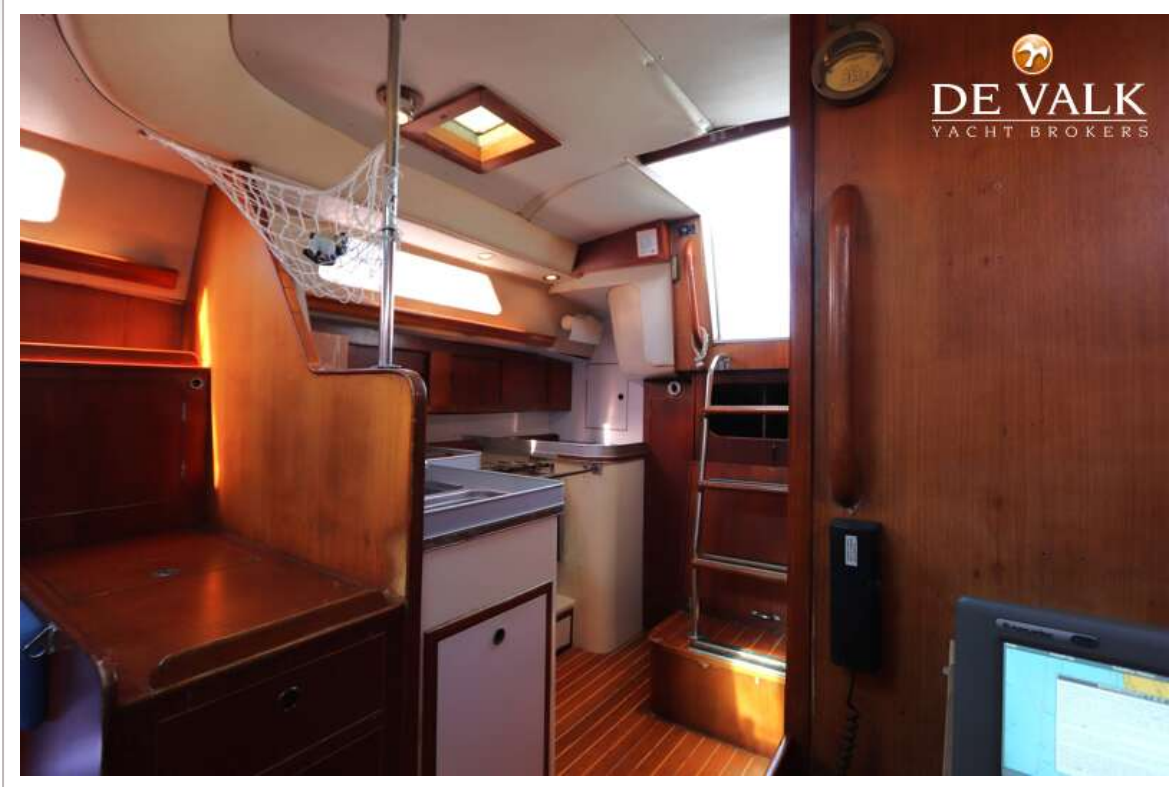
# NICHOLSON 40 AC



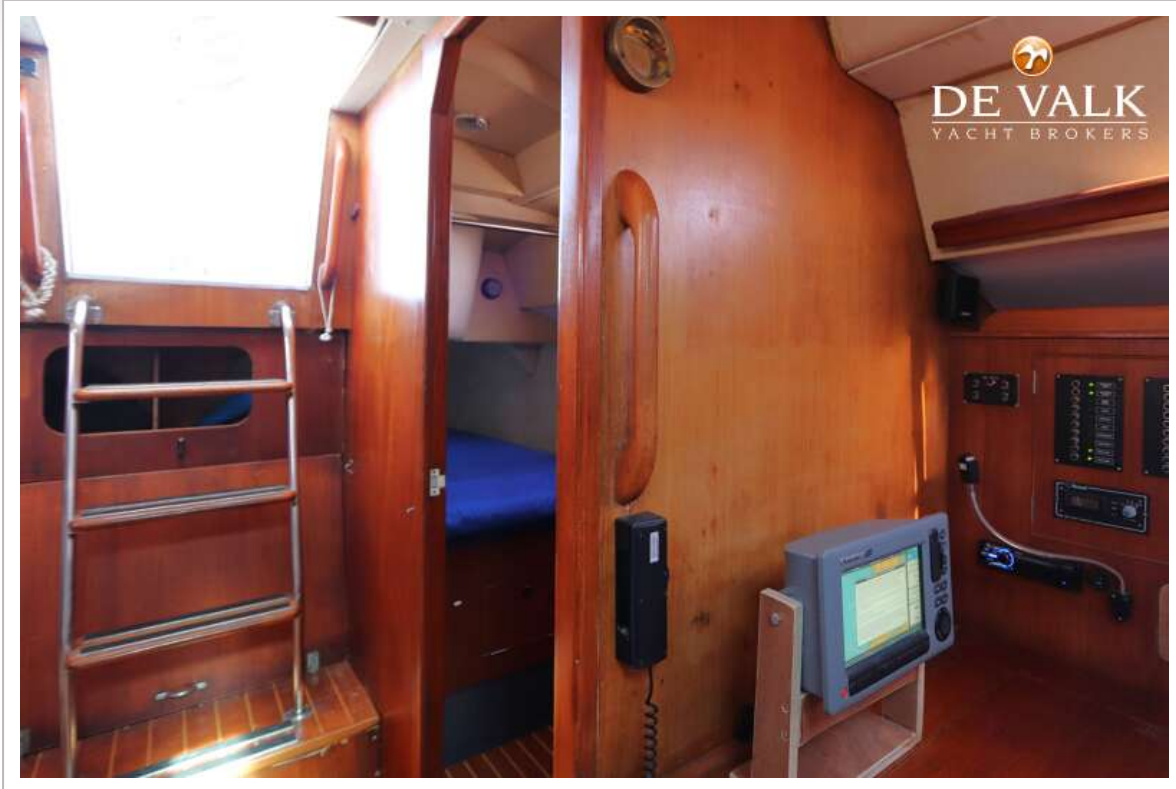
# NICHOLSON 40 AC



# NICHOLSON 40 AC



# NICHOLSON 40 AC



# NICHOLSON 40 AC

