



DE VALK  
YACHT BROKERS



## OYSTER 55



DE VALK  
YACHT BROKERS

# OYSTER 55

## BROKER'S COMMENTS

The Oyster 55 is perhaps the classic Oyster and one of the best-selling models ever. The 55 is heavily constructed with a single-skin GRP hull supported by massive ribs and stringers, encapsulated keel, and keel-stepped mast. The 55 is a proven world cruiser and consummate ocean-going live aboard. If you are looking for a long distance anywhere in the world adventure and you want a lot of yacht for your budget, then Chantique is for you. Easily handled short-handed with numerous sea berths, Chantique is the perfect yacht for a family or a couple who want to bring their dreams to reality.

*Maarten de Kroon*

## SPECIFICATIONS

<b>Dimensions</b>	17.14 x 4.80 x 2.30 (m)	<b>Builder</b>	Landamores, Norfolk
<b>Built</b>	1996	<b>Cabins</b>	4
<b>Material</b>	GRP	<b>Berths</b>	8
<b>Engine(s)</b>	1 x Yanmar 4JH2-DTE diesel	<b>Hp/Kw</b>	89.00 (hp), 65.50 (kw)
<b>Asking price</b>	\$ 350.000 (VAT Not paid)	<b>Lying</b>	Malaysia

## CONTACT

<b>Sales office</b>	De Valk Asia	<b>Telephone</b>	+65 826 679 95
<b>Address</b>	Penang region Penang Malaysia	<b>E-mail</b>	asia@devalk.nl

## DISCLAIMER

These particulars are given in good faith as supplied but cannot be guaranteed.



## GENERAL

Model	OYSTER 55
Type	sailing yacht
LOA (m)	17,14
LWL (m)	13,85
Beam (m)	4,80
Draft (m)	2,30
Headroom (m)	2,00
Year built	1996
Launched	1997
Builder	Landamores, Norfolk
Country	United Kingdom
Designer	Holman & Pye
Displacement (t)	23
Ballast (tonnes)	lead in GRP
Gross tonnage	29
Net tonnage	25,7
Hull material	GRP
Hull colour	white
Hull shape	round-bilged
Keel type	fin keel
Superstructure material	GRP
Deck material	GRP
Deck finish	teak
Superstructure deck finish	teak
Cockpit deck finish	teak
Dorades	4
Window frame	aluminium
Window material	polycarbonate
Deckhatch	6
Portholes	10



Fuel tank (litre)	GRP 600
Level indicator (fuel tank)	yes
Freshwater tank (litre)	GRP 1100
Level indicator (freshwater)	yes
Wheel steering	cable steering
Outside helm position	cable steering

## ACCOMMODATION

Cabins	4
Berths	8
Interior	mahogany
Floor	wood
Headroom saloon (m)	2,0m
Air-conditioning	reverse cycle airco 3
Chart table	yes
Dinette	yes
Galley	yes
Countertop	Duropal
Sink	stainless steel
Cooker	calor gas 4 burner
Oven	yes
Microwave	AEG
Fridge	yes
Freezer	yes
Hot water system	220V + engine
Water pressure system	electrical
Kettle	yes
Owners cabin	double bed
Bed length (m)	2,0
Wardrobe	hanging/drawers/shelves
Bathroom	en suite



Toilet	en suite
Toilet system	electric
Wash basin	in the bathroom
Shower	en suite
Guest cabin 1	v-bed
Bed length (m)	2,0m
Wardrobe	hanging/drawers/shelves
Bathroom	separate
Toilet	separate
Toilet system	electric
Wash basin	in the bathroom
Shower	separate
Guest cabin 2	bunk bed
Bed length (m)	1,95m
Wardrobe	hanging/drawers/shelves
Bathroom	separate
Toilet	separate
Toilet system	electric
Wash basin	in the bathroom
Shower	separate
Guest cabin 3	bunk bed
Bed length (m)	1,95m
Wardrobe	hanging/drawers/shelves
Bathroom	separate
Toilet	separate
Toilet system	electric
Wash basin	in the bathroom
Shower	separate

## MACHINERY

No of engines	1
---------------	---



# OYSTER 55

<b>Make</b>	Yanmar
<b>Type</b>	4JH2-DTE
<b>HP</b>	89
<b>kW</b>	65.50
<b>Fuel</b>	diesel
<b>Year installed</b>	1996
<b>Maximum speed (kn)</b>	12
<b>Cruising speed (kn)</b>	9
<b>Consumption (l/hr)</b>	4,5
<b>Range (nm)</b>	1100
<b>Engine hours</b>	1570
<b>Engine cooling system</b>	freshwater heat exchanger
<b>Drive</b>	shaft
<b>Shaft seal</b>	yes
<b>Engine controls</b>	bowden cable
<b>Gearbox</b>	mechanical
<b>Propeller type</b>	fixed
<b>Propeller shaft material</b>	stainless steel
<b>Shaft lubrication</b>	water
<b>Manual bilge pump</b>	yes
<b>Electric bilge pump</b>	yes
<b>Generator</b>	wet exhaust Onan 12 KVA
<b>Start battery</b>	12v 100Ah
<b>Service battery</b>	24v 250Ah (4x 12v 125 Ah)
<b>Shorepower</b>	with cable

## NAVIGATION

<b>Compass</b>	yes
<b>Multi control display</b>	Raymarine
<b>Depth sounder</b>	Raymarine Single and Tridata
<b>Log</b>	Raymarine Single and Tridata



Windset	Raymarine ST60
VHF	Icom IC-M59
Autopilot	Raymarine ST7001+
Radar	Raymarine
Plotter	Raymarine e-series HybridTouch
AIS transceiver	Raymarine AIS650 Class B
Navigation lights	yes

## EQUIPMENT

Sprayhood	yes
Cockpit cover	yes
Bimini	yes
Sun awning	yes
Cockpit cushions	yes
Cockpit table	yes
Bathing platform	yes
Boarding ladder	stainless steel
Deck shower	yes
Anchor	CQR Plough
Anchor chain	yes
Windlass	Lewmar
Capstan	yes
Dinghy	yes
Outboard	Powertec 15 HP
Outboard support	yes
Davits	yes
Davits controls	yes
Sea railing	wire
Grab rail (superstructure)	stainless steel
Railing side opening gates	yes
Pushpit	yes



<b>Pulpit</b>	yes
<b>Radar reflector</b>	yes
<b>Fenders</b>	yes
<b>Mooring lines</b>	yes
<b>Spare parts</b>	yes
<b>Radio</b>	yes
<b>Cockpit speakers</b>	yes
<b>Speakers in salon</b>	yes
<b>Clock - barometer</b>	yes
<b>Fire extinguisher</b>	yes

## RIGGING

<b>Rigging</b>	sloop-cutter
<b>Standing rigging</b>	wire
<b>Brand mast</b>	Hood Yacht Spars
<b>Material mast</b>	aluminium
<b>Spreaders</b>	2 pair
<b>Keel stepped mast</b>	yes
<b>Mainsail</b>	In-mast furler, new main
<b>Cutterstay</b>	yes
<b>Genoa I</b>	New Genoa
<b>Genoa furler</b>	Hood Yacht Systems
<b>Cutter furler</b>	yes
<b>Reefing System</b>	main in-mast furling
<b>Backstay adjuster</b>	mechanical Harken
<b>Boomvang</b>	mechanical and tackle
<b>Primary sheet winch</b>	2x Harken 66.2 electric
<b>Secondary sheet winch</b>	2x Harken 53
<b>Halyard winches</b>	3x Harken 48
<b>Spi-pole</b>	aluminium
<b>Isolated backstay</b>	yes







# OYSTER 55

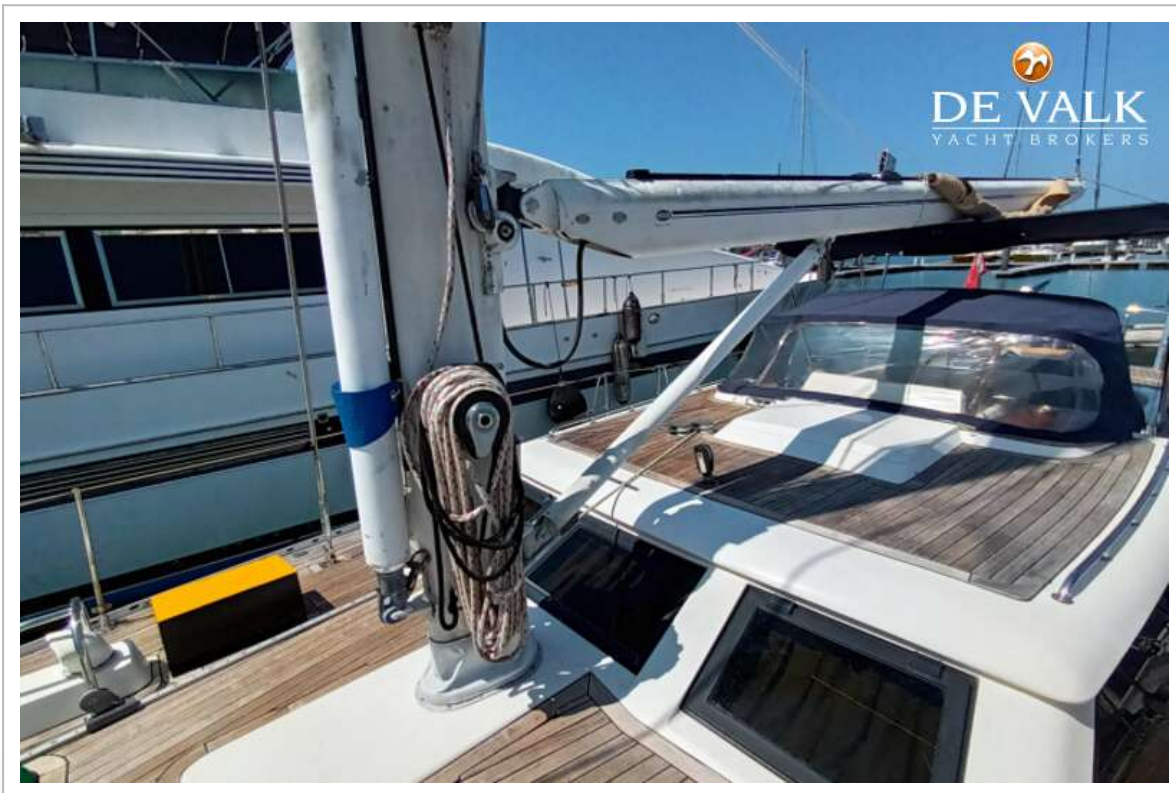
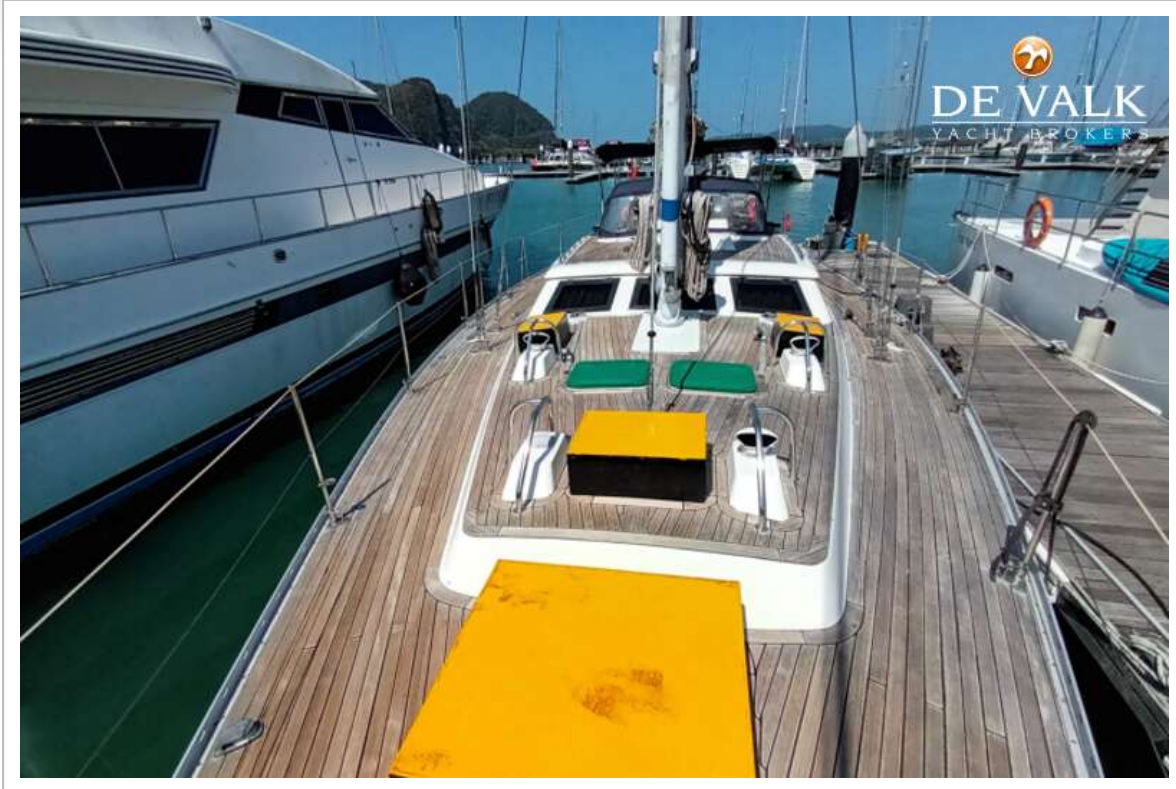


# OYSTER 55





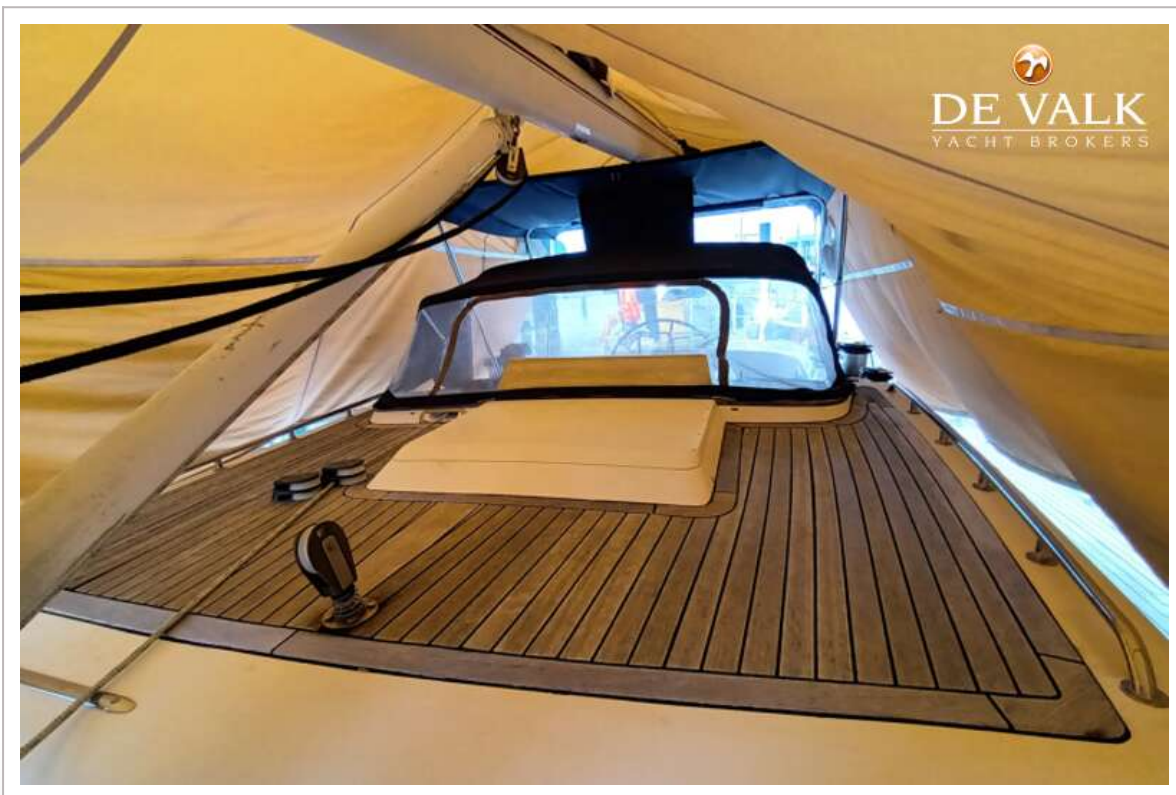
# OYSTER 55







# OYSTER 55



# OYSTER 55



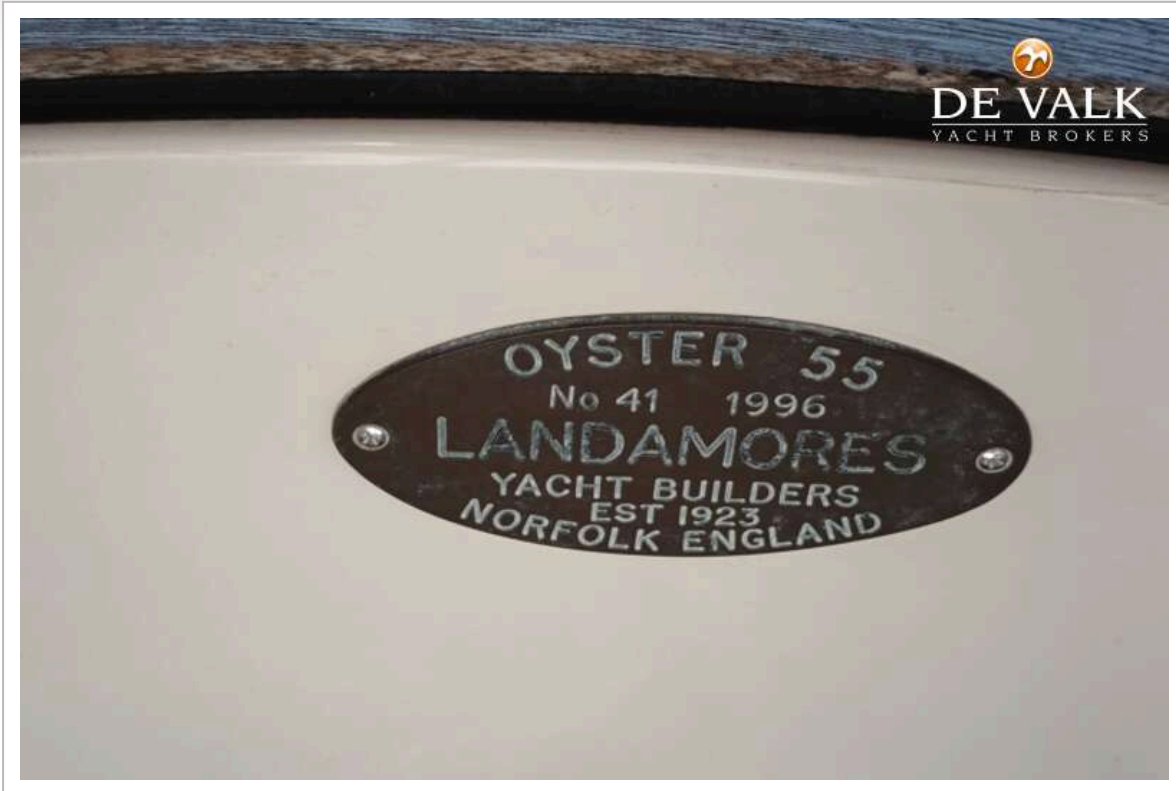


# OYSTER 55





# OYSTER 55

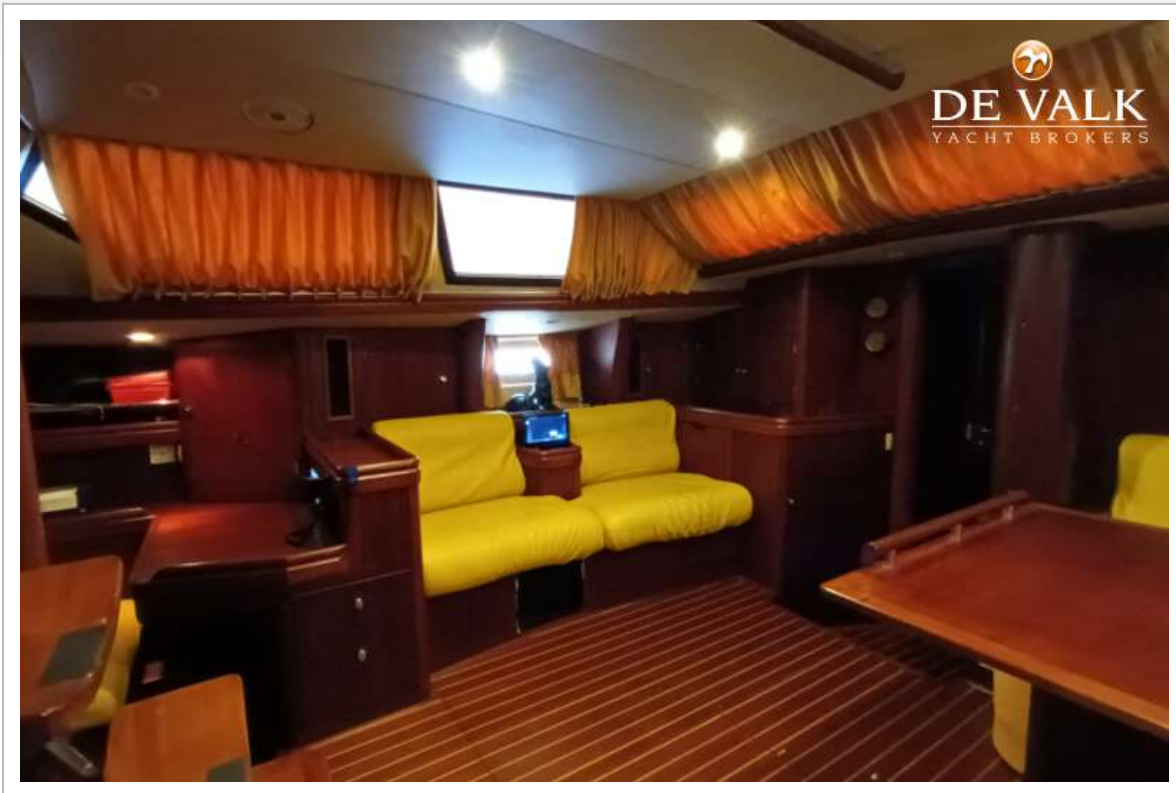


# OYSTER 55

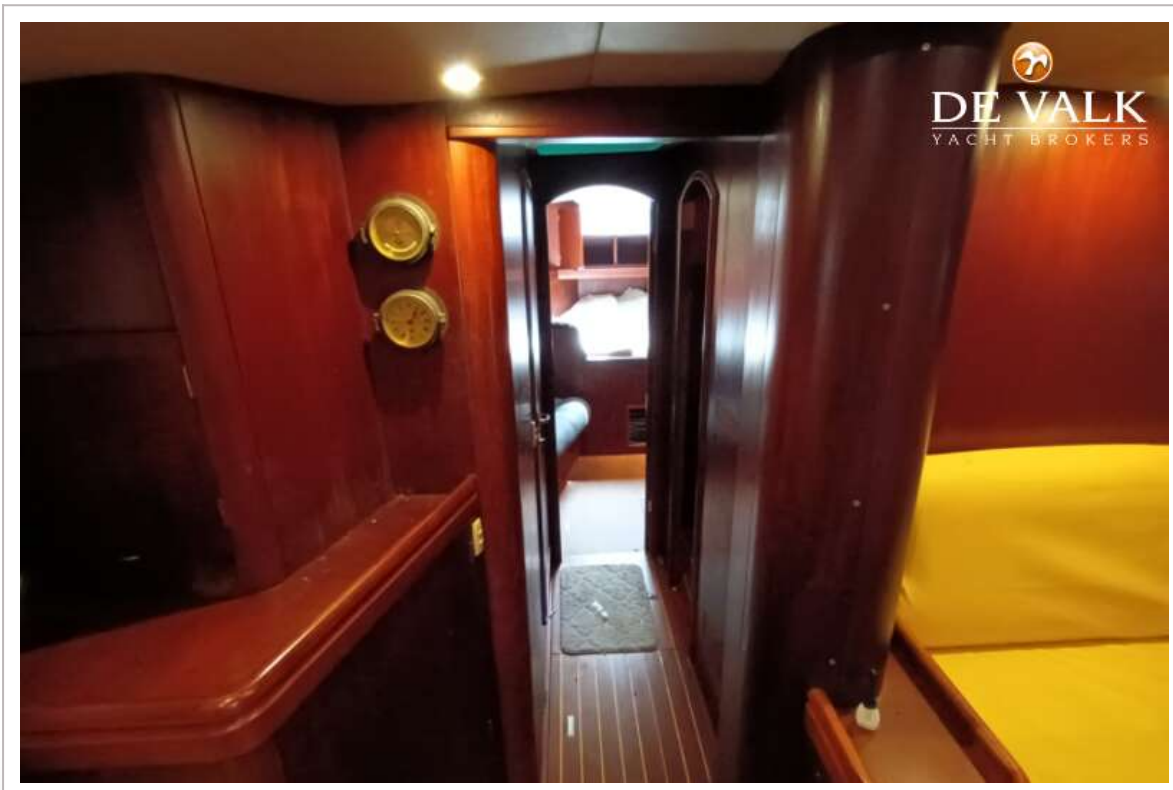




# OYSTER 55



# OYSTER 55

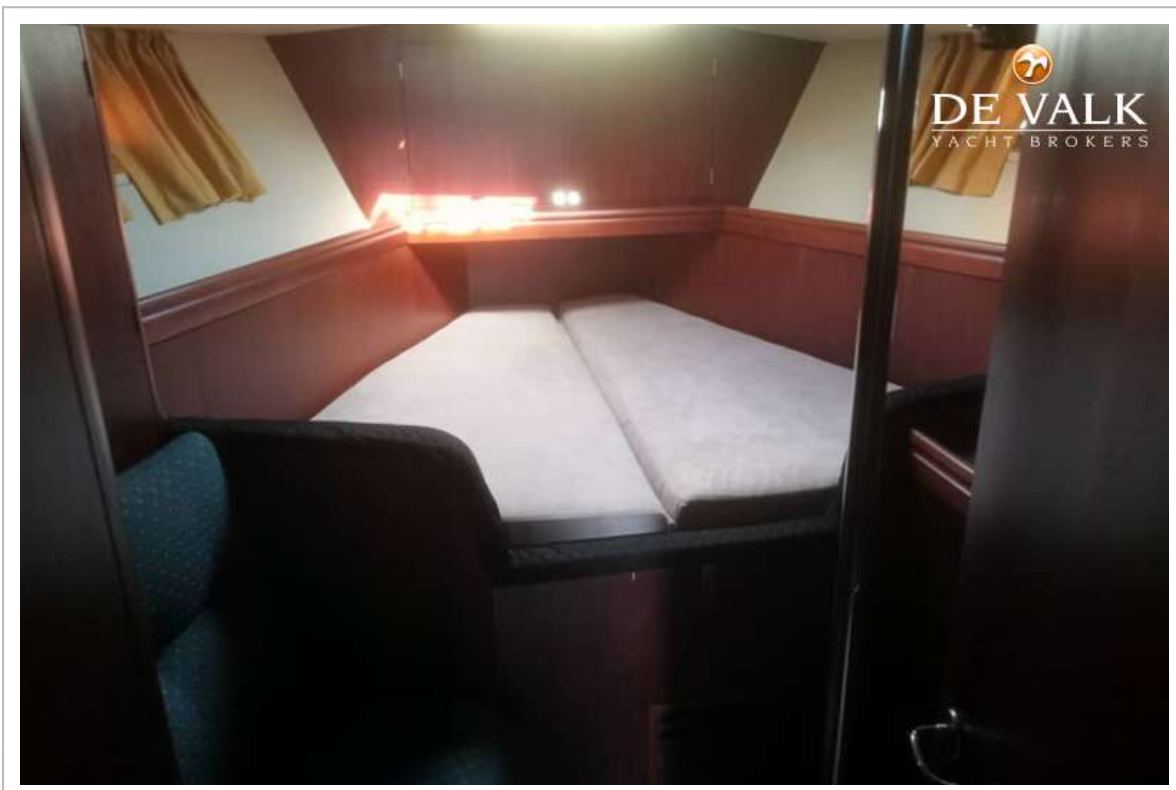


# OYSTER 55





# OYSTER 55



# OYSTER 55

