



DE



SLIVER

CUSTOM MODIFIED VAN DE STADT 45



DE VALK
YACHT BROKERS

CUSTOM MODIFIED VAN DE STADT 45

BROKER'S COMMENTS

The Custom modified van de stadt 45 "Sliver" is a Gavin Mair Marine design based on a modified van de Stadt Samoa. She has a hydraulic lifting keel with a draft between 1.20 and 2.60m providing lots of cruising possibilities. Her fixed doghouse with extended roof makes the cockpit part of the living and sheltered sailing possible. The Custom modified van de Stadt 45 was purpose built as a diving vessel explaining her large cockpit and extended platform. Built by a shipyard specialized in constructing heavy duty commercial vessels.

Hans Visser

SPECIFICATIONS

Dimensions	13.80 x 4.30 x 2,60 / 1.20 (m)	Builder	Marfab Engineering
Built	1996	Cabins	1
Material	Aluminium	Berths	6
Engine(s)	1 x Nanni Toyota based 6-280 diesel	Hp/Kw	60.00 (hp), 44.16 (kw)
Asking price	sold (VAT)	Lying	elsewhere / Not at sales office

CONTACT

Sales office	De Valk Hindeloopen	Telephone	+31 514 52 40 00
Address	Oosterstrand 1 8713 JS Hindeloopen The Netherlands	E-mail	hindeloopen@devalk.nl

DISCLAIMER

These particulars are given in good faith as supplied but cannot be guaranteed.



CUSTOM MODIFIED VAN DE STADT 45

GENERAL

Model	CUSTOM MODIFIED VAN DE STADT 45
Type	sailing yacht
LOA (m)	13,80
Beam (m)	4,30
Draft (m)	1,20
Draft min (m)	2,60
Year built	1996
Builder	Marfab Engineering
Country	Australia
Designer	Gavin Mair Marine/E.G. van de Stadt/
Displacement (t)	13
Net tonnage	yes
Hull material	aluminium
Hull colour	antracite gray Unpainted
Hull thickness (mm)	6mm (alu 5083)
Hull shape	round-bilged
Keel type	lifting keel
Superstructure material	aluminium
Superstructure (mm)	5mm (alu 5083)
Deck plate thickness (mm)	4 mm (alu 5083)
Rubbing strake	aluminum
Deck material	aluminium
Deck finish	non-skid paint
Superstructure deck finish	non-skid paint
Cockpit deck finish	non-skid paint
Antifouling (year)	Winter 2022/2023
Dorades	3 x
Window frame	aluminium See below more paint info
Window material	perspex All newly re placed atfter paint 2022/2023
Deckhatch	3 x



CUSTOM MODIFIED VAN DE STADT 45

Portholes	yes
Insulation	glasswool
Radar arch	yes
Fuel tank (litre)	aluminium 750 ltr
Freshwater tank (litre)	aluminium 2x 300 ltr
Blackwater tank (litre)	polyethylene
Blackwater tank extraction	deck extraction + uw line
Wheel steering	yes
Outside helm position	hydraulic Hydrive 2000 for bulkhead and cable steering for pedestal
Emergency tiller	yes
More info on paintwork	Superstructure painted 2022/23, Inside painting needs attention
Extra info	Ship needs some equipment upgrading and maintenance
Extra info	Dubbel Jefa pedestal met 2 steering-wheel

ACCOMMODATION

Cabins	1
Berths	6
Interior	White
Layout	Practical
Floor	parquet
Doghouse	yes
Saloon	yes
Headroom saloon (m)	1,98
Navigation center	yes
Chart table	yes
Dinette to convert into berth	yes
Convertible berth	yes
Sliding door to cockpit	yes
Galley	yes
Countertop	wood



CUSTOM MODIFIED VAN DE STADT 45

Sink	stainless steel
Cooker	induction 2 burner
Oven	yes
Microwave/oven combi	yes
Fridge	yes
Freezer	yes
Hot water system	220V + engine Boiler 2020 connection drips
Water pressure system	2x Shurflow pumps - 24 v
Crockery	yes
Owners cabin	double bed
Bed length (m)	200 x 1,60
Wardrobe	hanging and shelves
Bathroom	separate
Toilet	separate
Toilet system	electric
Wash basin	at the toilet
Shower	shared

MACHINERY

No of engines	1
Make	Nanni Toyota based
Type	6-280
HP	60
kW	44.16
Fuel	diesel
Year installed	1996
Maximum speed (kn)	11
Cruising speed (kn)	8
Engine hours	3600
Engine cooling system	freshwater heat exchanger
Drive	shaft



CUSTOM MODIFIED VAN DE STADT 45

Shaft seal	yes
Engine controls	mechanical
Gearbox	mechanical
Bowthruster	electric
Sternthruster	electric Needs to be checked
Gearbox	mechanical
Propeller type	fixed
Propeller blades	3
Propeller shaft material	stainless steel
Shaft lubrication	water
Manual bilge pump	yes
Electric bilge pump	yes
Bilge alarm	yes
Electrical installation	12 & 24 V DC and 230 V AC
Generator	Onan 6,5 Kw 2 1500 rpm with soundshield (needs work)
Batteries	2 x 230 Ah for 24 V 230 AH (not connected)
Start battery	1x 90 Ah 12 V
Service battery	8x75 Ah 12V for total 300 Ah 24 V in 3 banks ow6 blue top optima
Battery charger	24 V Mastervolt 2015 & 12 V Mastervolt 2021
Shorepower	with cable
Insulation transformer	Mastervolt 2018
Extra info	Spare Seahawk' Auto stream three blade heavy duty propeller

NAVIGATION

Compass	Ritchie compass
Depth sounder	Raytheon 850
Windset	Autohelm ST50
Repeater	Autohelm
VHF handheld	2 x Uniden Plus Radio Ocean DSC (no dutch)
Autopilot	TMQ AP 50 & Autohelm 7000



Rudder angle indicator	yes
Radar	Furuno RPU 015 with 2.4 kW radome MU120
GPS	yes
Plotter	yes
Radar/GPS/plotter	yes
AIS receiver	yes
Radio receiver	SSB
Navigation lights	yes
Extra info	Extra equipment : Raymarine Evo 400 Raymarine Es 97 system
Extra info	Raymarine Ais 650 + splitter Navpod 2x for screens, Victron 4kw

EQUIPMENT

Fixed windscreen	Aluminium with glass windows
Storm blinds	yes
Fixed hardtop	yes
Dodger	yes
Sun awning	yes
Cockpit cushions	yes
Cockpit table	yes
Bathing platform	yes
Boarding ladder	stainless steel
Anchor	CQR Plough 1x
Anchor chain	75 mtr
Anchor 2	1x admiralty,
Windlass	electrical Tiger windlass (HWC2200 1000W/24V)
Dinghy	Bombard 380 (rib airdeck)
Outboard	yes
Sea railing	yes
Grab rail (superstructure)	yes
Pushpit	yes
Pulpit	yes



CUSTOM MODIFIED VAN DE STADT 45

Life raft	container Seasafe 4 persons life raft - new 2007
Life raft (pers)	4 pers
Last life raft survey	Needs service
Lifejackets	4x
Spare parts	Many parts available
Tools	yes
Fire extinguisher	yes
Extinguisher in engine room	Fire system in engine room: CO2 extinguisher.
Extra info	Flares (old)

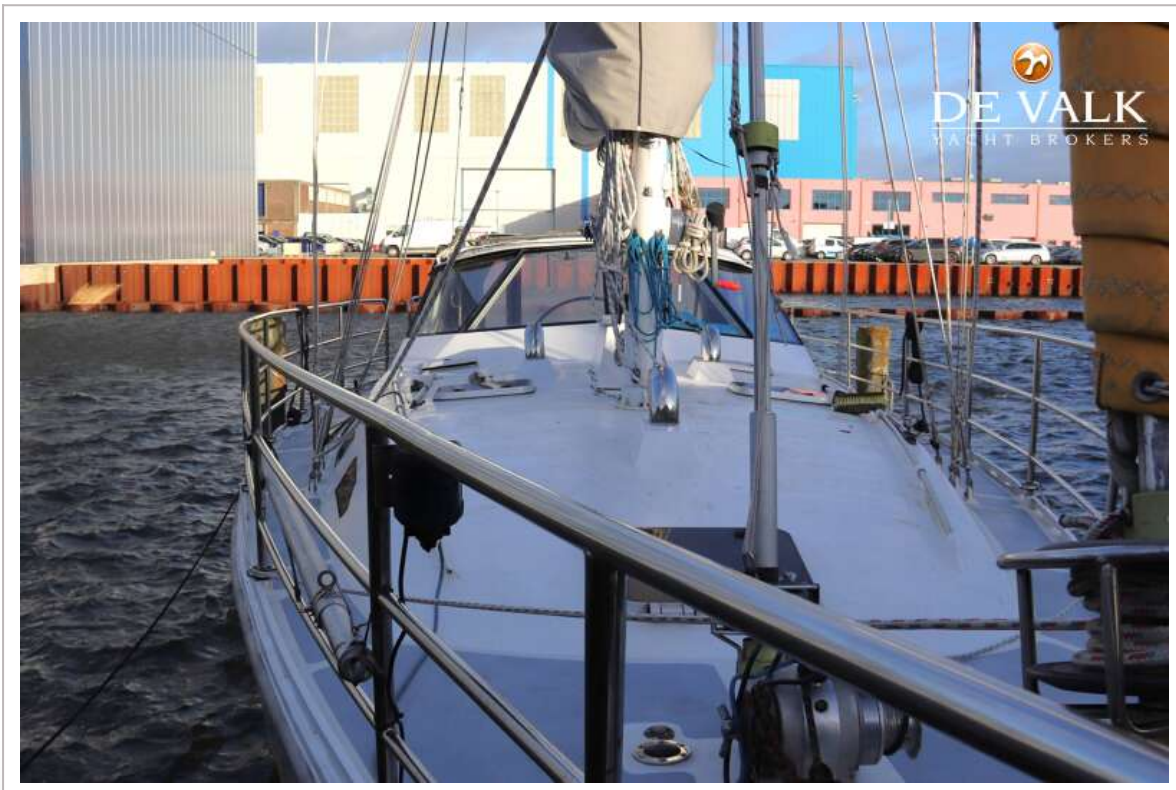
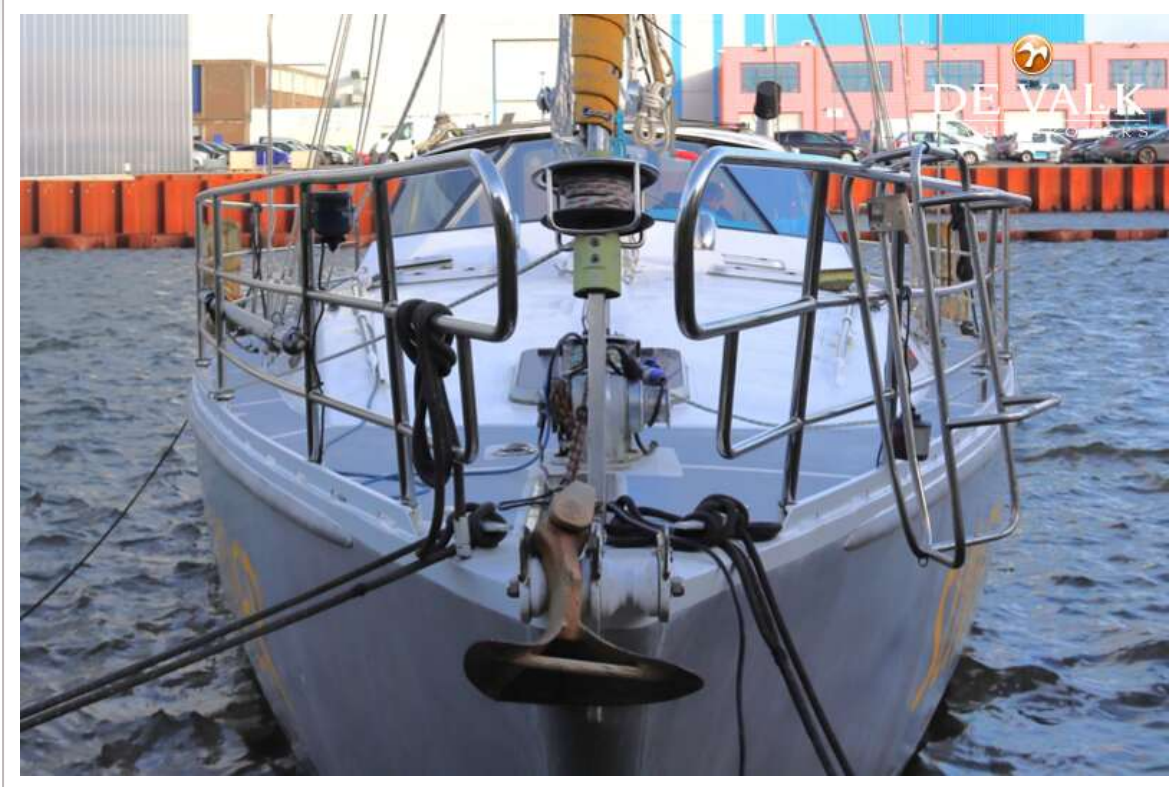
RIGGING

Rigging	sloop
Standing rigging	wire Lower shrouds new 2004, rig checked & partial renewed 2020
Material mast	aluminium
Mainsail	Rolly Tasker Challenge Supercruise (11.09oz) - 51,6m2
Mainsail cover	yes
Genoa	Rolly Tasker Challenge Supercruise (7.5oz) - 62m2
Genoa furler	Profurl NC42 headsail furling system
Cutter furler	Rolly Tasker hank on
Code Zero	NO, but rigged for Multi Purpose Sail (MPS)
Spinnaker	yes
Stormjib	yes
Primary sheet winch	2x Lewmar 2 speed 58ST
Halyard winches	2x Lewmar 2 speed 44ST
Reefing winch	1x Lewmar 2 speed 30ST
Multifunctional winches	1x Lewmar 2 speed 30ST
Spi-pole	aluminium





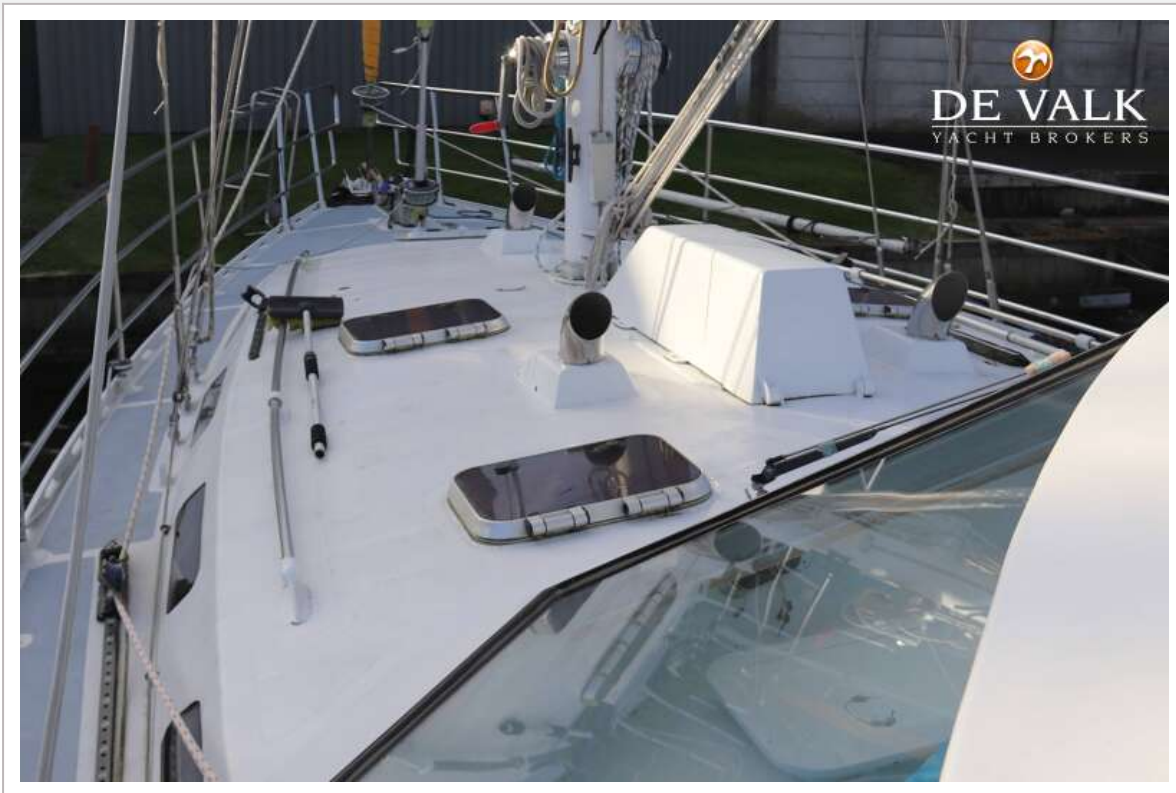
CUSTOM MODIFIED VAN DE STADT 45

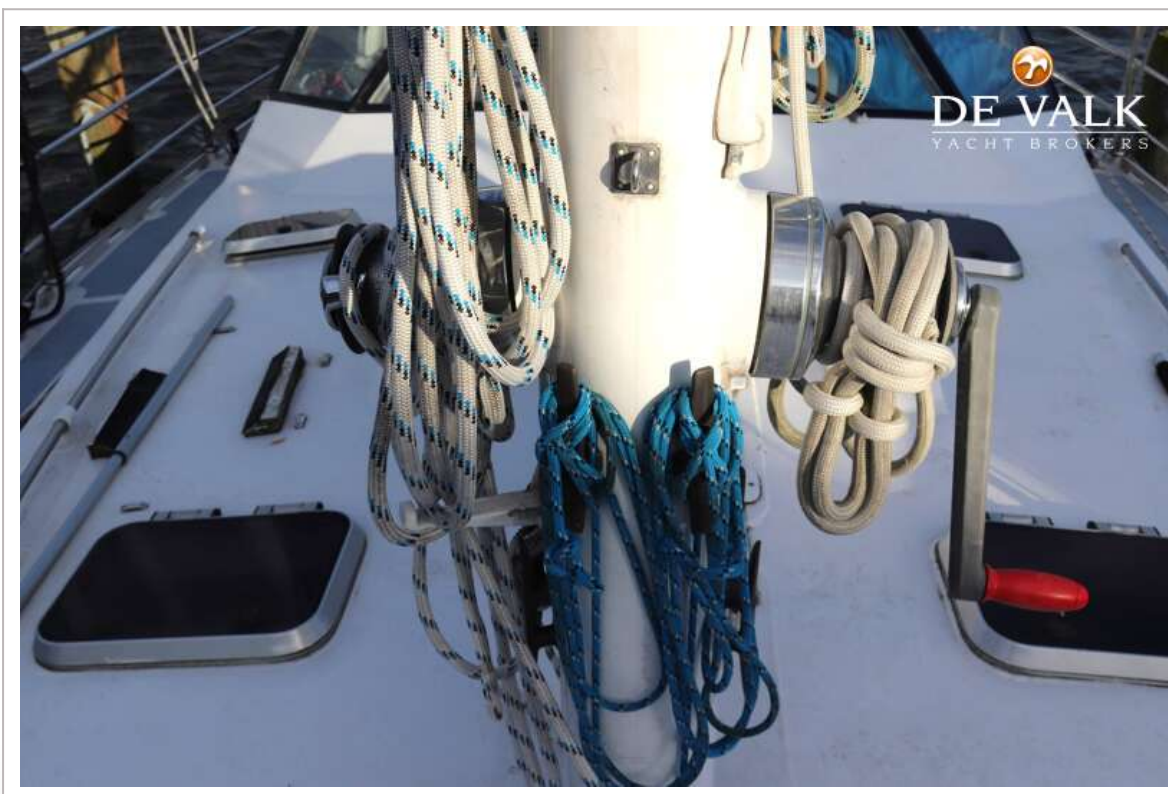
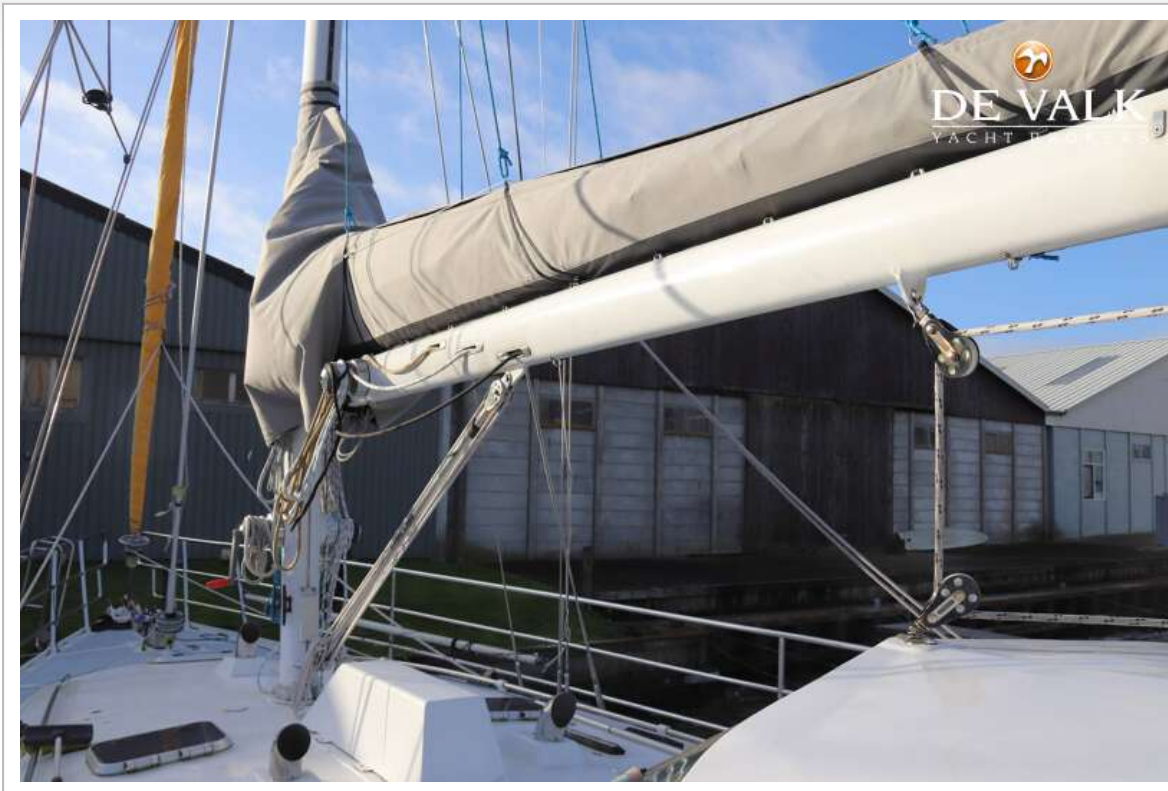


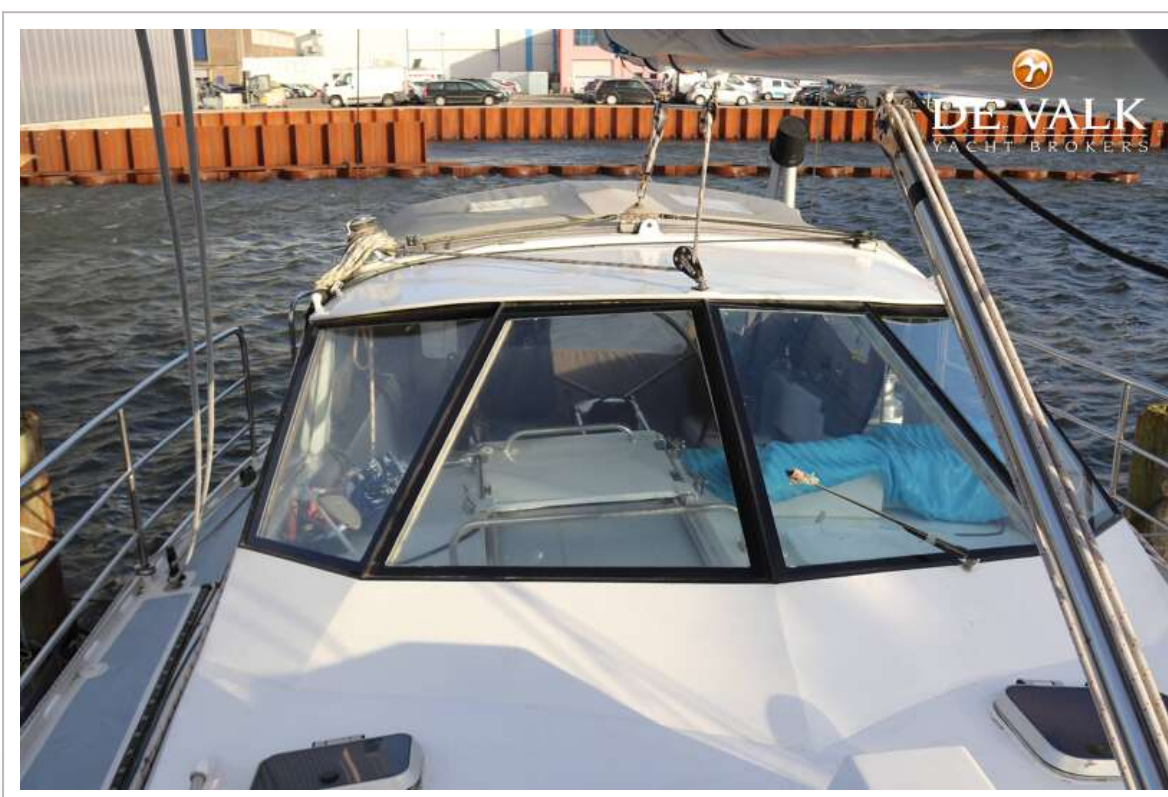
CUSTOM MODIFIED VAN DE STADT 45



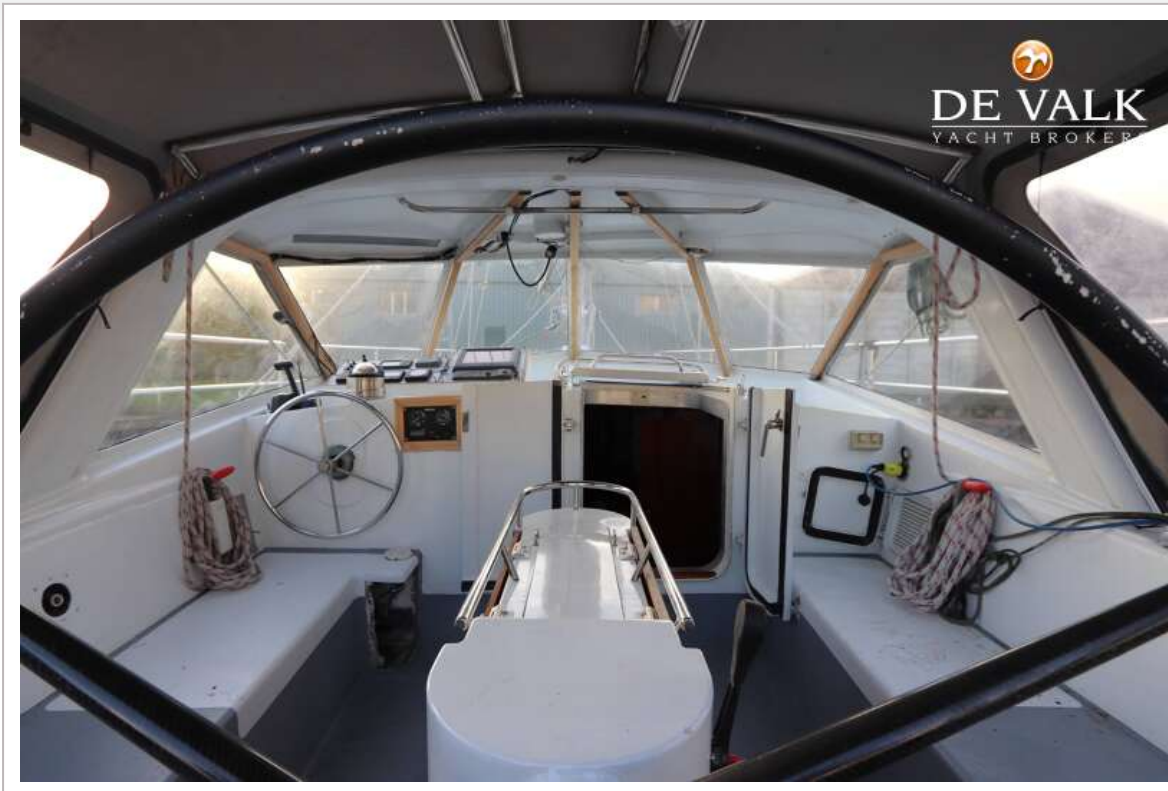
CUSTOM MODIFIED VAN DE STADT 45







CUSTOM MODIFIED VAN DE STADT 45

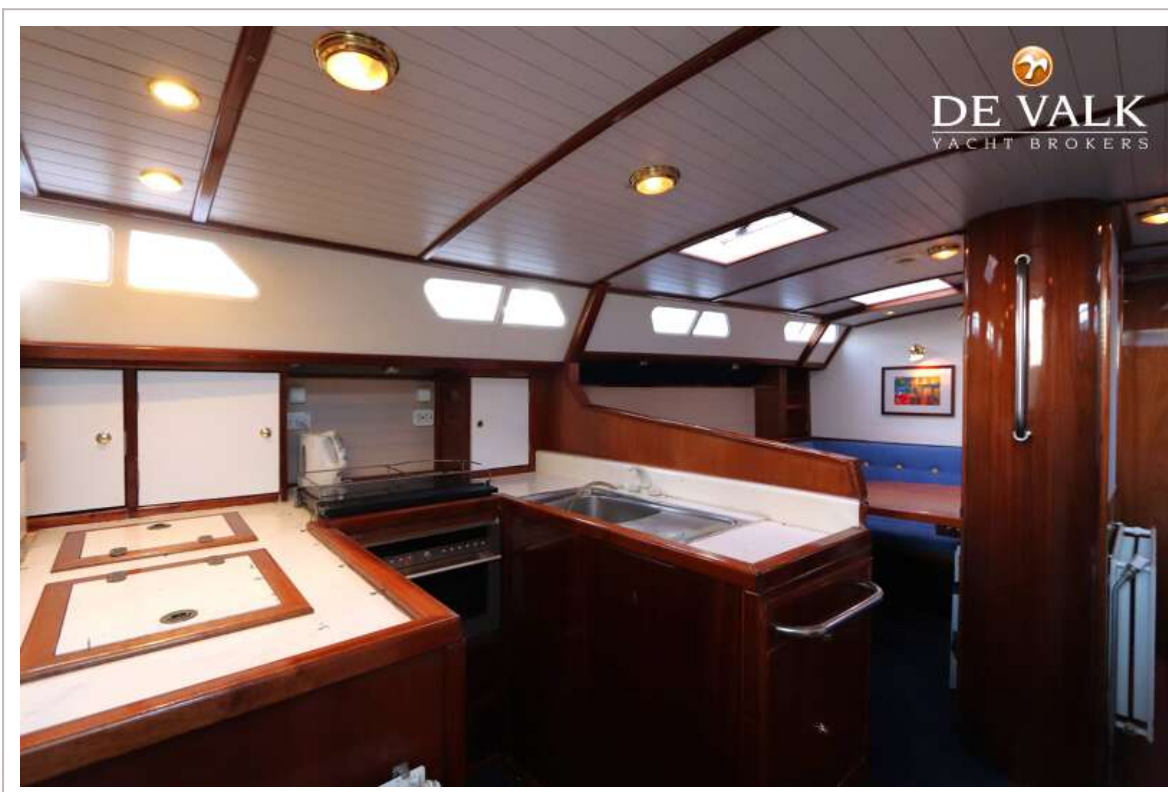




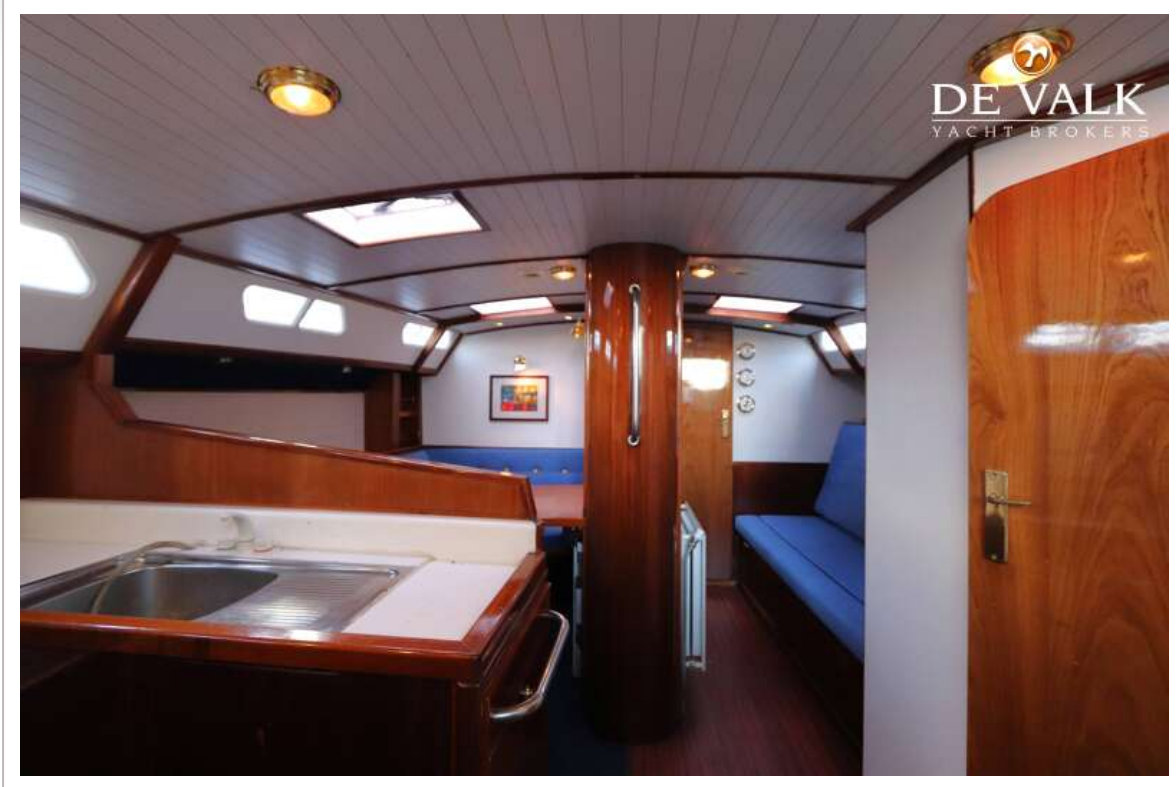
CUSTOM MODIFIED VAN DE STADT 45



CUSTOM MODIFIED VAN DE STADT 45



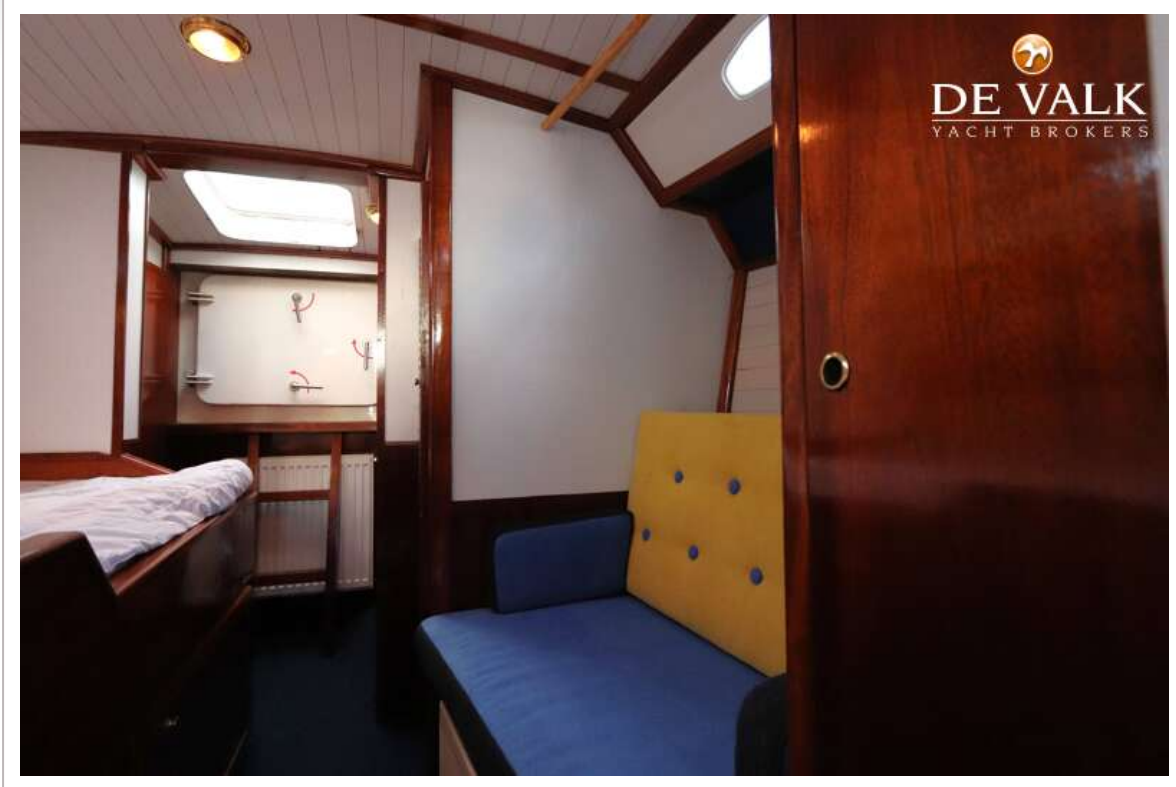
CUSTOM MODIFIED VAN DE STADT 45



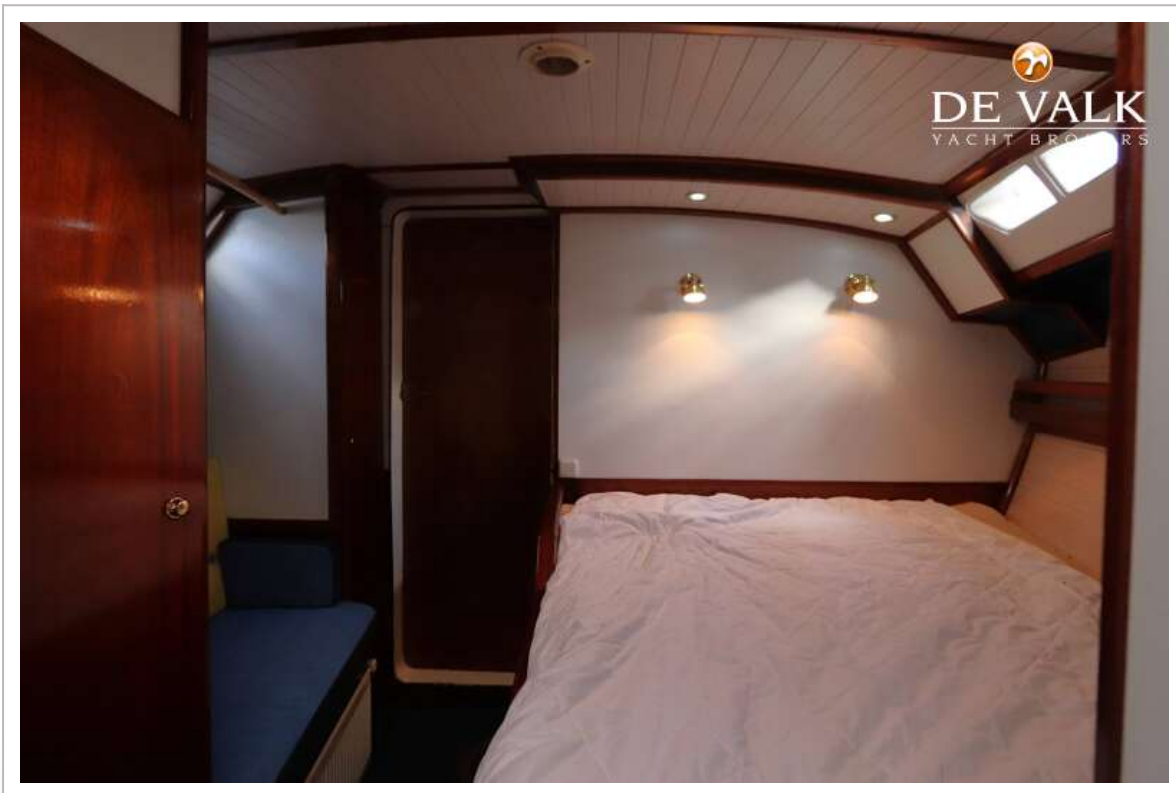
CUSTOM MODIFIED VAN DE STADT 45



CUSTOM MODIFIED VAN DE STADT 45



CUSTOM MODIFIED VAN DE STADT 45



CUSTOM MODIFIED VAN DE STADT 45



CUSTOM MODIFIED VAN DE STADT 45





CUSTOM MODIFIED VAN DE STADT 45

