



## DUFOUR 460 GRAND LARGE



**DE VALK**  
YACHT BROKERS

# DUFOUR 460 GRAND LARGE

## BROKER'S COMMENTS

This Dufour 460 Grand Large is a well-maintained charter coastal cruiser in excellent condition with new sails, new sail drive, new turbo, new jet truster, new windlass brand new under water works. Polished and waxed sides and fully equipped with folding propellor, dinghy and had no grounding. This 460 GL is the best of both worlds. The impressive beam (carried well aft), and high freeboard make the yacht appear larger than its 46 ft LOA. Yet with its fixed sprit, long waterline and plumb bow, low profile coach roof and the judicious addition of 3 horizontal windows in the hull.

*Willem Koopmans*

## SPECIFICATIONS

<b>Dimensions</b>	14.15 x 4.50 x 2.20 (m)	<b>Builder</b>	Dufour Yachts
<b>Built</b>	2016	<b>Cabins</b>	4
<b>Material</b>	GRP	<b>Berths</b>	9
<b>Engine(s)</b>	1 x Volvo Penta D2-75F diesel	<b>Hp/Kw</b>	75.00 (hp), 55.20 (kw)
<b>Asking price</b>	€ 179.000 (VAT Not paid)	<b>Lying</b>	at sales office

## CONTACT

<b>Sales office</b>	De Valk Costa Blanca	<b>Telephone</b>	+34 96 50 21 569
<b>Address</b>	Costa Blanca Region 03730 Javea Alicante ES	<b>E-mail</b>	costablanca@devalk.nl

## DISCLAIMER

These particulars are given in good faith as supplied but cannot be guaranteed.



# DUFOUR 460 GRAND LARGE

## GENERAL

Model	DUFOUR 460 GRAND LARGE
Type	sailing yacht
LOA (m)	14,15
LWL (m)	12,54
Beam (m)	4,50
Draft (m)	2,20
Air draft (m)	16,50
Headroom (m)	2,05
Year built	2016
Builder	Dufour Yachts
Country	France
Designer	Umberto Felci
Displacement (t)	10,76
Ballast (tonnes)	cast iron 2,85
CE norm	A
Hull material	GRP
Hull colour	white
Hull shape	round-bilged
Keel type	fin keel with bulb
Superstructure material	GRP
Deck material	GRP
Deck finish	non-skid moulded in
Superstructure deck finish	non-skid moulded in
Cockpit deck finish	teak
Antifouling (year)	Self cleaning, new 2024
Window frame	aluminium Lewmar Flush Mitre
Window material	perspex
Deckhatch	Lewmar Flush 3G
Portholes	aluminium
Fuel tank (litre)	polyethylene 270



# DUFOUR 460 GRAND LARGE

Level indicator (fuel tank)	Display
Freshwater tank (litre)	polyethylene 530
Level indicator (freshwater)	Display
Blackwater tank (litre)	polyethylene 3 x 50L.
Blackwater tank extraction	deck extraction + uw line
Wheel steering	cable steering Twin helm
Emergency tiller	yes
More info on hull	Under water part with Sikaflex (2024), polished & waxed sides
Extra info	No grounding reported

## ACCOMMODATION

Cabins	4
Berths	9
Interior	yes
Layout	4 cabin version
Floor	wood
Saloon	yes
Headroom saloon (m)	2,05
Heating	yes
Air-conditioning	single cycle airco
Chart table	yes
Galley	yes
Countertop	corian
Sink	stainless steel
Cooker	calor gas Eno 3 burner
Oven	yes
Fridge	Isotherm Toploader
Freezer	Isotherm Toploader
Hot water system	220V + engine Isotemp SPA 40
Water pressure system	electrical
Hot water tap	yes



# DUFOUR 460 GRAND LARGE

Crockery	yes
Guest cabin 1	double bed Aft Port
Bed length (m)	2,09 x 1,60
Wardrobe	hanging and shelves
Toilet	en suite
Toilet system	electric Jabsco Kompakt
Wash basin	at the toilet
Shower	en suite
Guest cabin 2	double bed Aft STB
Bed length (m)	2,09 x 1,60
Wardrobe	hanging and shelves
Toilet	en suite
Toilet system	electric Jabsco Kompakt
Wash basin	at the toilet
Shower	en suite
Guest cabin 3	double bed Forward Port
Bed length (m)	2,00 x 1,50
Wardrobe	hanging and shelves
Toilet	en suite
Toilet system	electric Jabsco Kompakt
Wash basin	at the toilet
Shower	en suite
Guest cabin 4	double bed Forward STB
Bed length (m)	2,00 x 1,50
Wardrobe	hanging and shelves
Toilet	en suite
Toilet system	electric Jabsco Kompakt
Wash basin	at the toilet
Shower	en suite
Extra info	Interior in very good conditions



# DUFOUR 460 GRAND LARGE

## MACHINERY

No of engines	1
Make	Volvo Penta
Type	D2-75F
HP	75
kW	55.20
Fuel	diesel
Year installed	2016
Year of overhaul	2024
Maximum speed (kn)	8,59
Cruising speed (kn)	6,5
Consumption (l/hr)	3,5
Range (nm)	400
Engine hours	5308
Engine cooling system	freshwater heat exchanger
Drive	sail-drive
Saildrive seal	New sail drive (2024), seal 150S (new 2022)
Engine controls	bowden cable Volvo
Gearbox	hydraulic
Bowthruster	electric Jet Thruster 90, new 2024
Exhaust	watercooled
Propeller type	folding
Propeller blades	3
Propeller shaft material	stainless steel
Shaft lubrication	water
Manual bilge pump	Whale Smart Bail
Electric bilge pump	Whale Orca
Electrical installation	12 V System
Start battery	12V / 100 Ah Acid
Service battery	3 x 12V / 140 Ah Acid
Bowthruster battery	4 x 12V / 75 Ah AGM



# DUFOUR 460 GRAND LARGE

Battery monitor	Display
Battery charger	Cristec Y Power 12V/ 60 A
Inverter	yes
Solar panel	yes
Shorepower	with cable 230V
Extra info	New turbo (2024), new engine battery (2024), new seacocks (2024)

## NAVIGATION

Compass	2 x Olympic 115
Multi control display	Raymarine i70
Depth sounder/log	Raymarine i50
Windset	Raymarine i70
VHF	Raymarine Ray 50
Autopilot	Raymarine EV-400 p70
Plotter/GPS	Raymarine Axiom 9 touchscreen WIFI
Electronic chart(s)	Navionics Med & black sea (02.2019)
EPIRB	GME MT403
Navigation lights	LED

## EQUIPMENT

Sprayhood	TTop Protection
Bimini	TTop Protection
Cockpit cushions	yes
Cockpit table	yes
Bathing platform	Retractable
Boarding ladder	stainless steel
Gangway	Swiss Tech CL250
Deck shower	Whale Twist (h&c)
Anchor	Cobra 2 (25kg)
Anchor chain	100 m (10mm)



# DUFOUR 460 GRAND LARGE

Anchor 2	Brittany (16kg)
Windlass	electrical Lewmar CPX4 (new 2022) 1600W with remote control
Dinghy	yes
Outboard	yes
Outboard support	yes
Sea railing	wire
Grab rail (superstructure)	teak
Railing side opening gates	yes
Pushpit	yes
Pulpit	yes
Life raft	valise (or bag) EV
Life raft (pers)	10
Last life raft survey	2023
Lifejackets	yes
Safety harness	yes
Lifebuoy	yes
Binocular	yes
Radar reflector	yes
Fenders	yes
Mooring lines	yes
Spare parts	yes
Tools	yes
Radio	Kennwood KDC-164U
iPod connection	yes
Cockpit speakers	Marine
Speakers in salon	yes
Fire extinguisher	3 units (2kg)

## RIGGING

Rigging	fractional
Standing rigging	wire





# DUFOUR 460 GRAND LARGE

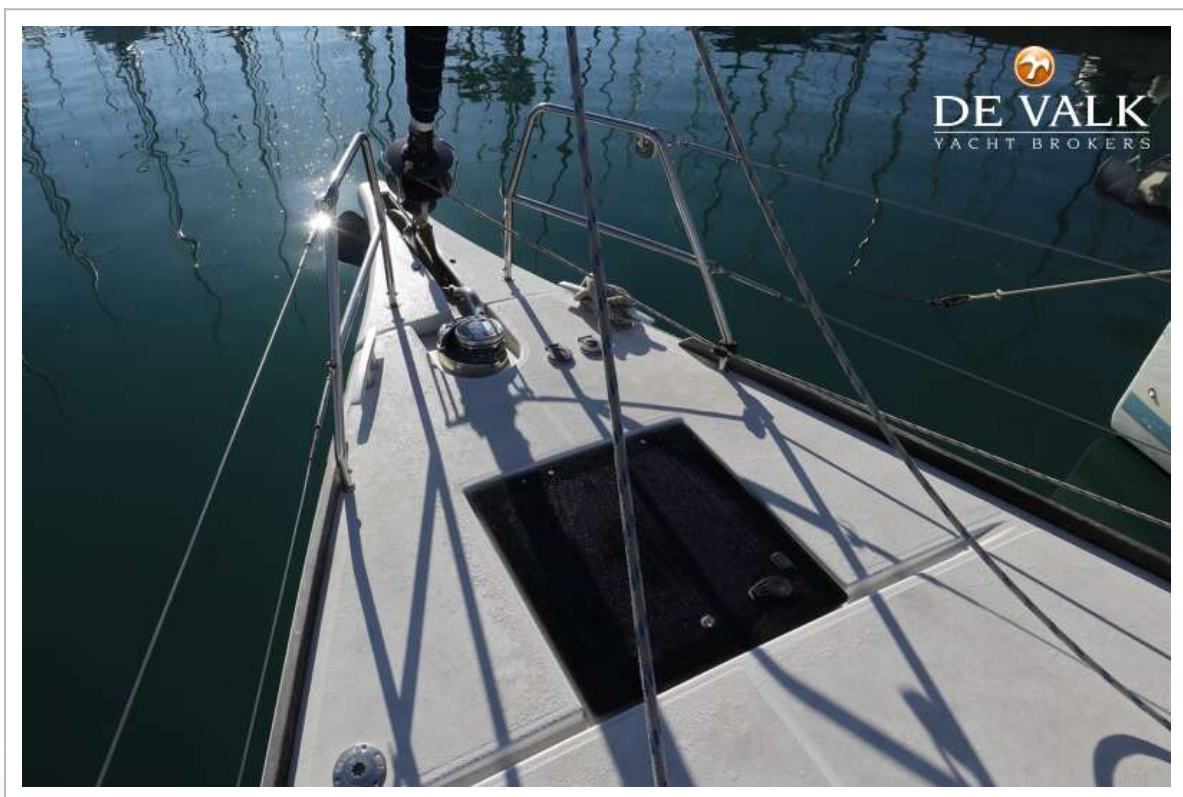
<b>Brand mast</b>	Z-Spar
<b>Material mast</b>	aluminium
<b>Spreaders</b>	yes
<b>Mainsail</b>	ELV / TNF (new June 2023)
<b>Genoa</b>	ELV / TNF (new Sept. 2023)
<b>Genoa furler</b>	Facnor LS200
<b>Reefing System</b>	main in-mast furling
<b>Boomvang</b>	mechanical and tackle Z-711
<b>Primary sheet winch</b>	2 x Lewmar EVO 50 ST AB
<b>Secondary sheet winch</b>	Lewmar EVO 45 ST AB
<b>Halyard winches</b>	Lewmar EVO 45 STE AB (electric)



# DUFOUR 460 GRAND LARGE



# DUFOUR 460 GRAND LARGE





# DUFOUR 460 GRAND LARGE



# DUFOUR 460 GRAND LARGE





# DUFOUR 460 GRAND LARGE

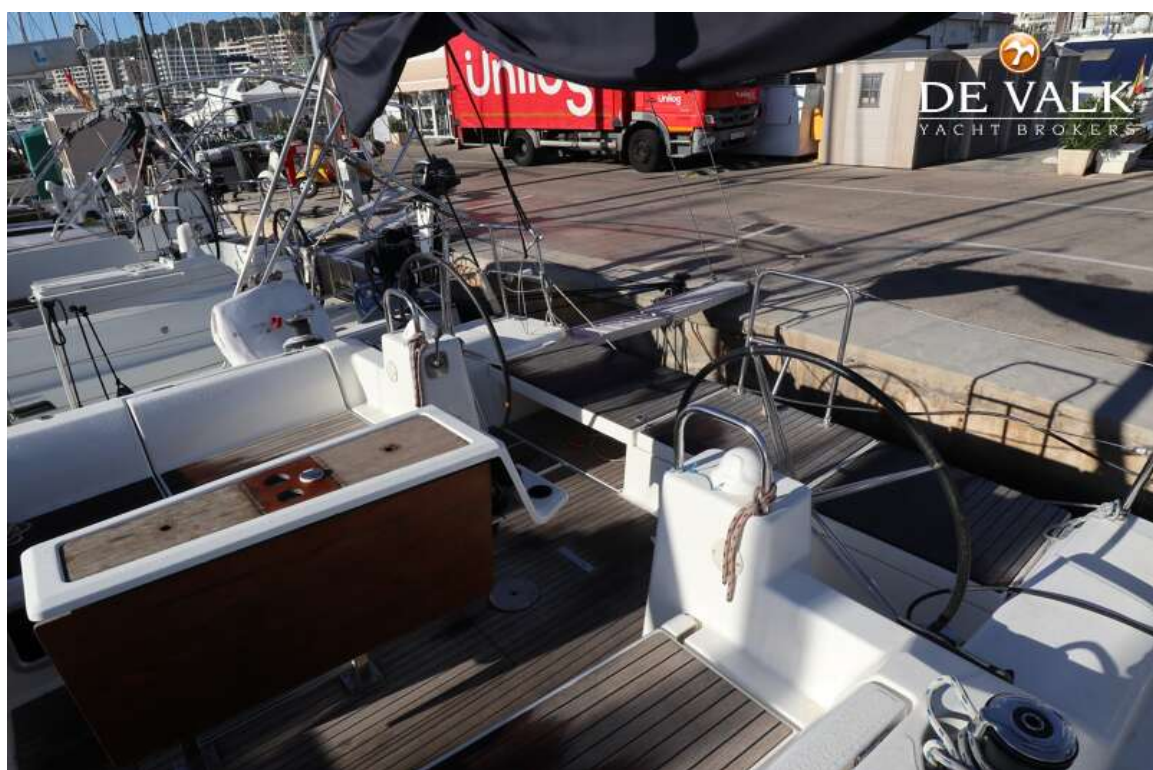


# DUFOUR 460 GRAND LARGE





# DUFOUR 460 GRAND LARGE

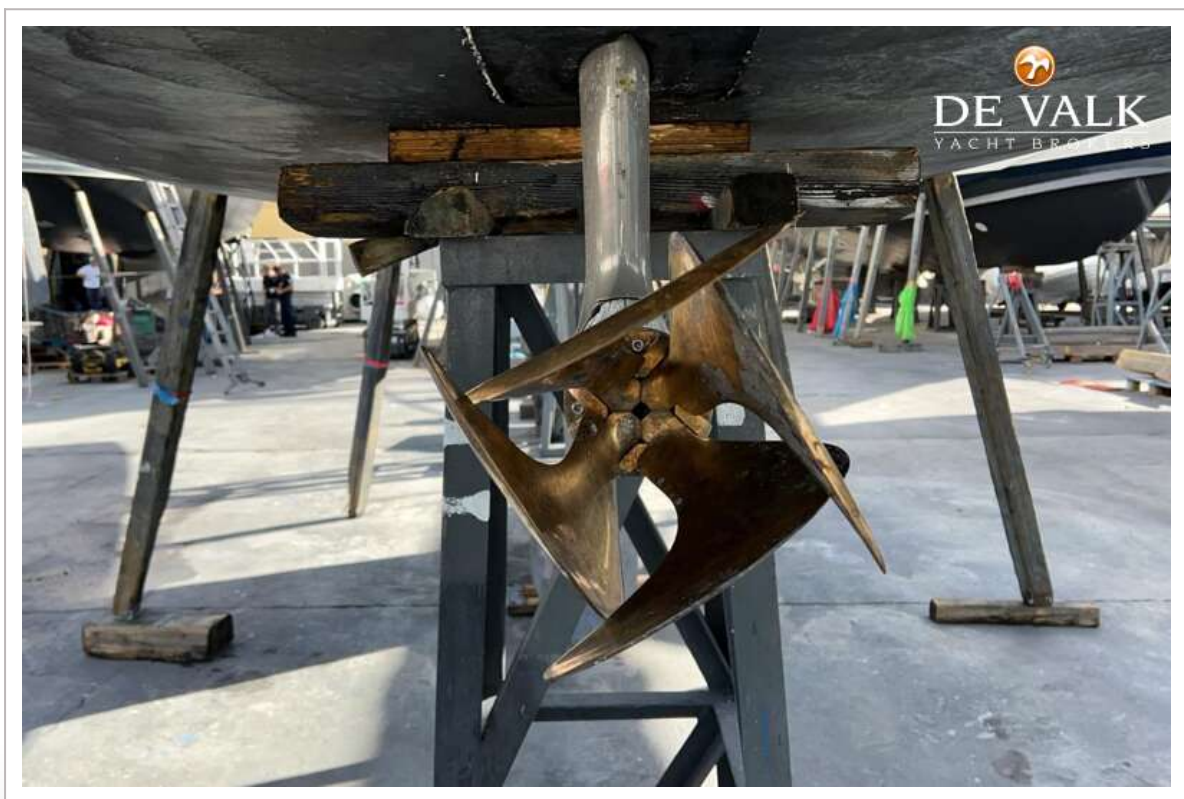
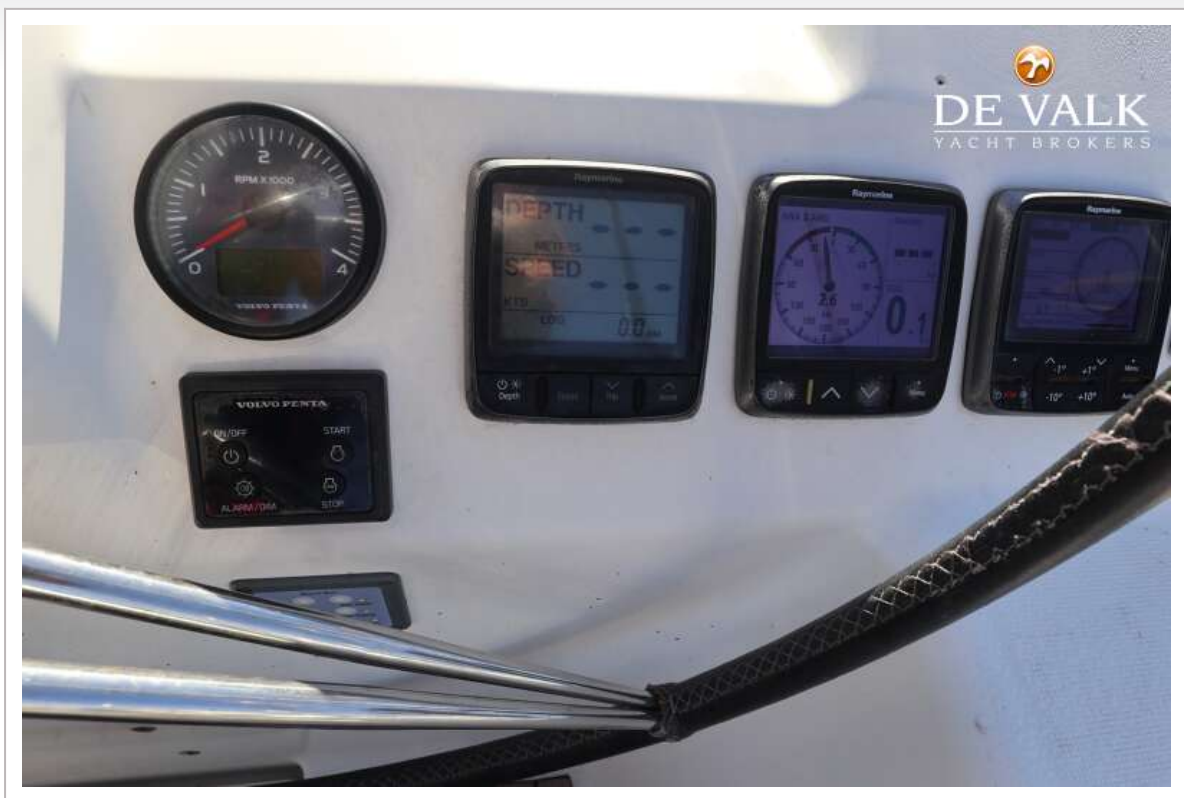




# DUFOUR 460 GRAND LARGE

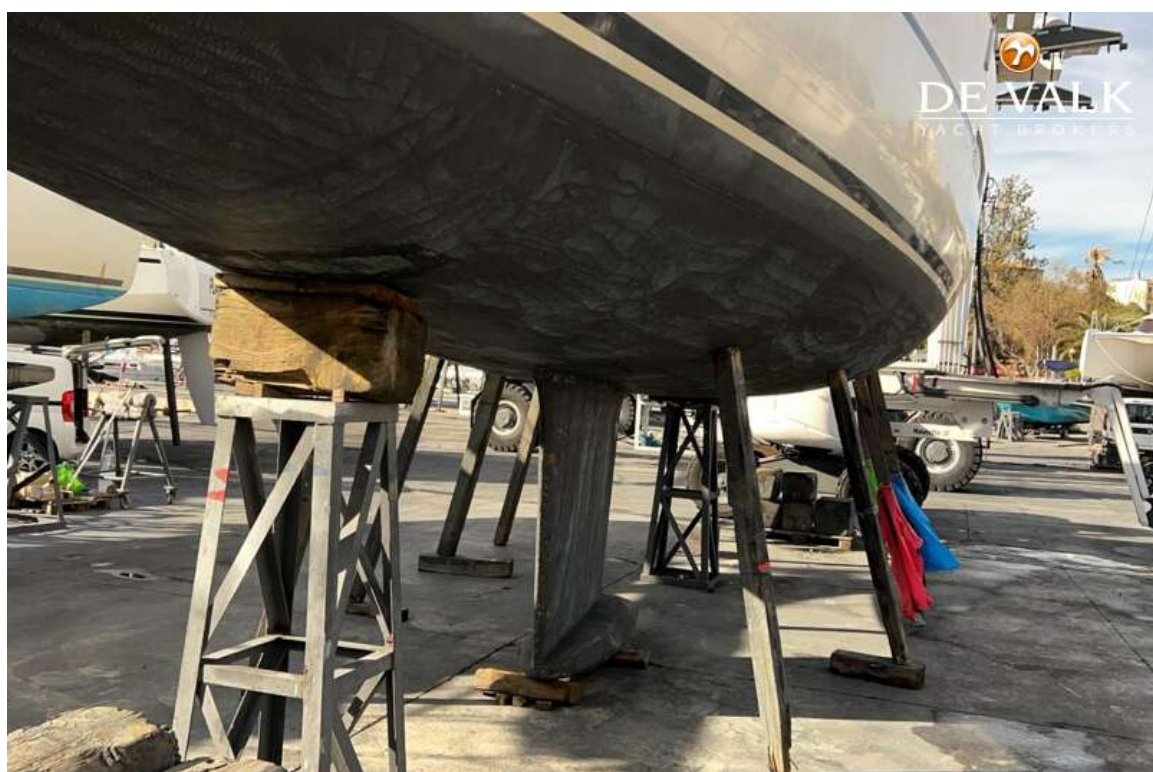


# DUFOUR 460 GRAND LARGE





# DUFOUR 460 GRAND LARGE



# DUFOUR 460 GRAND LARGE





# DUFOUR 460 GRAND LARGE

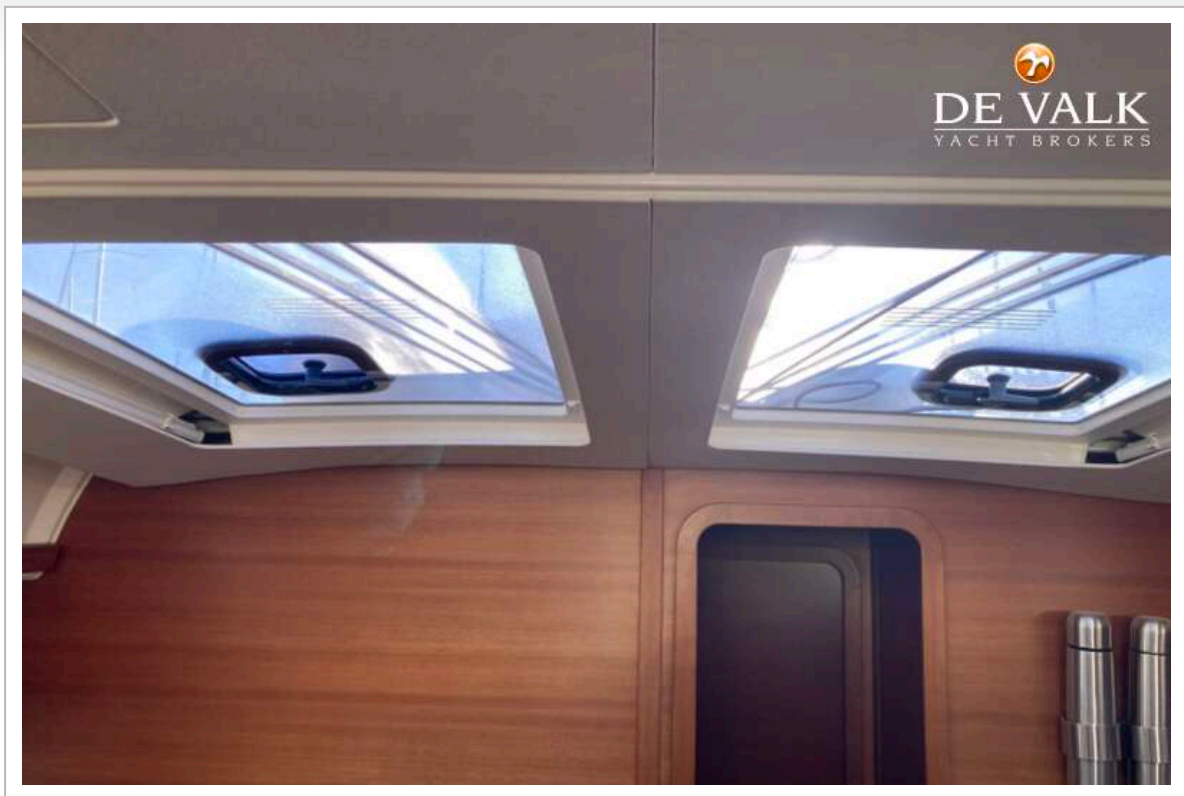


# DUFOUR 460 GRAND LARGE

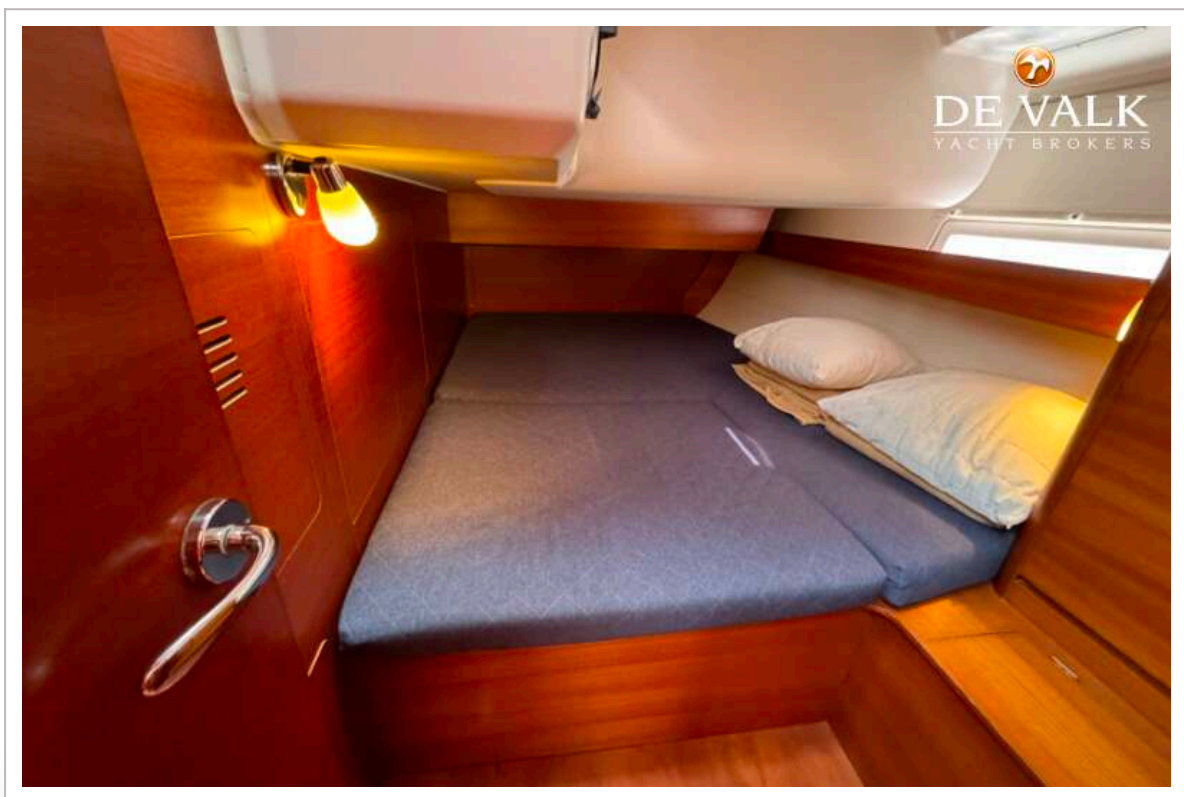




# DUFOUR 460 GRAND LARGE



# DUFOUR 460 GRAND LARGE

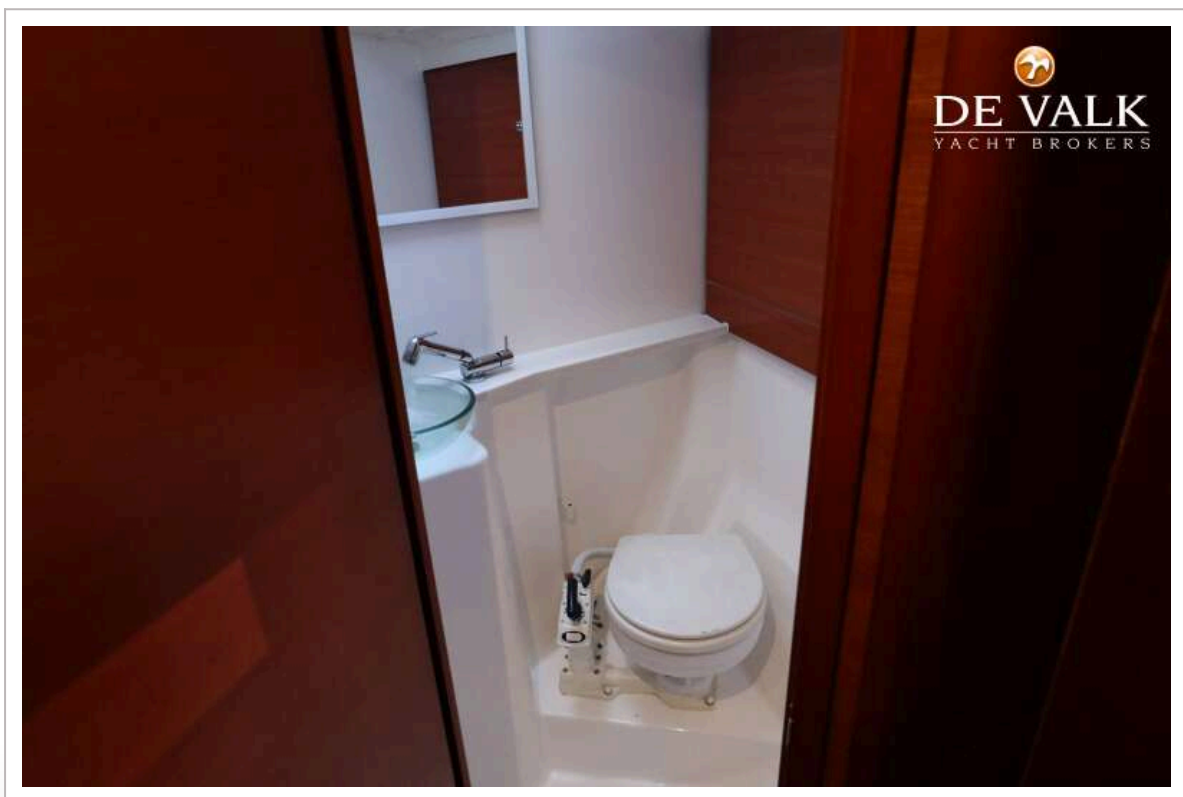




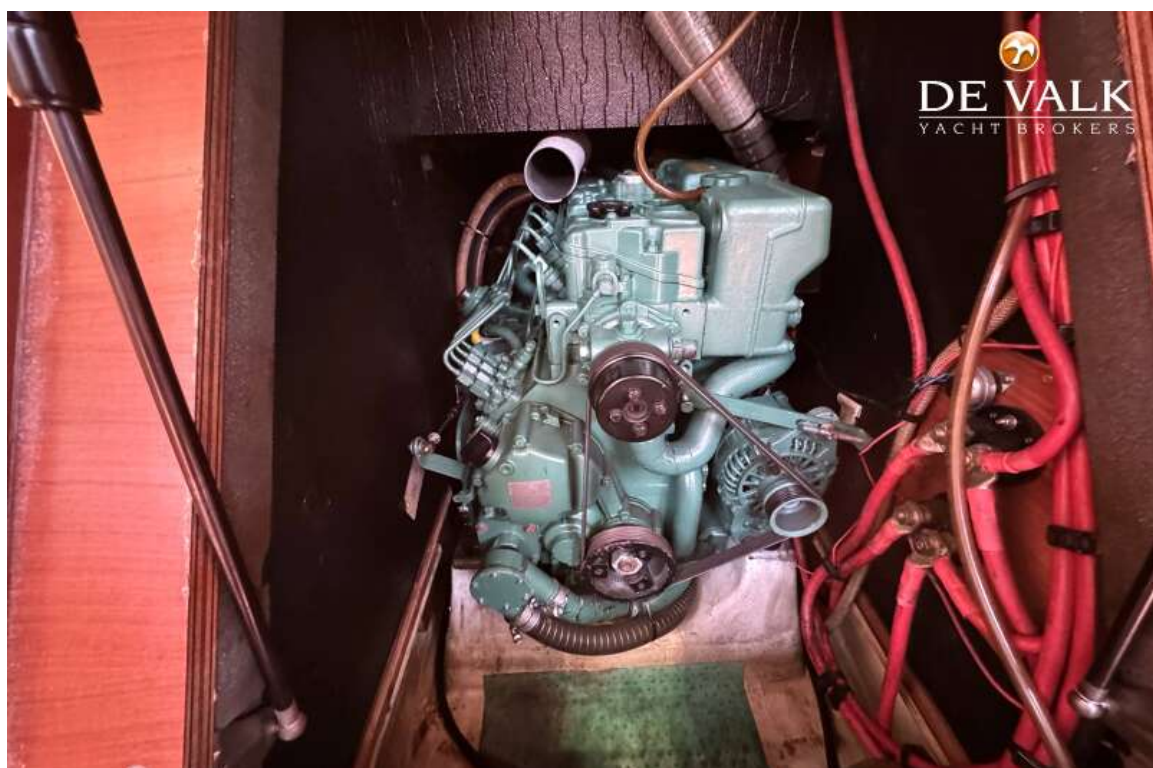
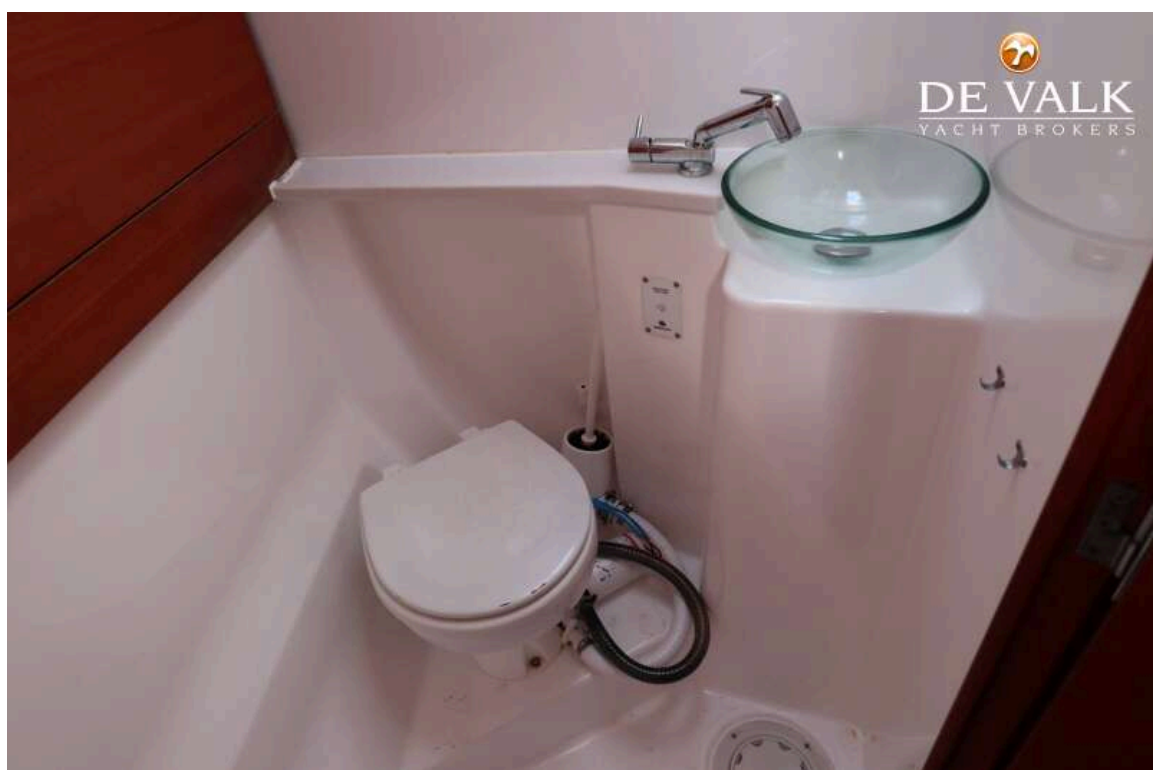
# DUFOUR 460 GRAND LARGE



## DUFOUR 460 GRAND LARGE



## DUFOUR 460 GRAND LARGE





# DUFOUR 460 GRAND LARGE

