



TRAWLER EXPLORER 60

TRAWLER EXPLORER 60

BROKER'S COMMENTS

Custom built Aluminium Trawler in true Explorer style to expand your horizons. 60 feet of sturdy built quality, well equipped, large fuel and water tanks and fitted with stabilizers, airco and central heating. This go-anywhere Explorer 60 can handle both warm and cold climates. She underwent a major refit in 2007 and 2022 (the list is comprehensive) and is ready for you to do some serious in- and offshore cruising. The salon, galley, pilothouse and flybridge offer good accommodations above deck and 4 double cabins below. Ample storage plus a big lazarette aft below the large enclosed cockpit.

Willem Koopmans

SPECIFICATIONS

Dimensions	18.32 x 5.35 x 1.82 (m)	Builder	Van Toledo / Interyachts Holland
Built	1997	Cabins	4
Material	Aluminium	Berths	8
Engine(s)	2 x Cummins 6BT5.9M diesel	Hp/Kw	2 x 210 (hp), 154.35 (kw)
Asking price	€ 679.000 (VAT Paid)	Lying	contact sales office

CONTACT

Sales office	De Valk Costa Blanca	Telephone	+34965021569
Address	Costa Blanca Region 03730 Javea Alicante Spain	E-mail	costablanca@devalk.nl

DISCLAIMER

These particulars are given in good faith as supplied but cannot be guaranteed.



TRAWLER EXPLORER 60

GENERAL

Model	TRAWLER EXPLORER 60
Type	motor yacht
LOA (m)	18,32
Beam (m)	5,35
Draft (m)	1,82
Air draft (m)	8,75
Air draft min (m)	5,30
Headroom (m)	2,02
Year built	1997
Launched	Refit 2007 Alumarine/ techniques 2021 Yrseke Yacht service, NL
Builder	Van Toledo / Interyachts Holland
Country	The Netherlands
Designer	Piet de Jonge Yacht Design
Displacement (t)	50
Ballast (tonnes)	lead in aluminum 3,5
CE norm	NA
Hull material	aluminium
Hull colour	blue
Hull thickness (mm)	8-6 rib-distance 40cm
Hull shape	round-bilged
Superstructure material	aluminium
Rubbing strake	aluminum
Deck material	aluminium
Deck finish	teak Front needs some attention, rest in good condition
Superstructure deck finish	teak In good condition
Cockpit deck finish	teak In good condition
Antifouling (year)	June 2023
Dorades	yes
Window material	double glazing New 2007
Deckhatch	yes



TRAWLER EXPLORER 60

Portholes	aluminium
Insulation	foam
Flybridge	yes
Radar arch	collapsible Hydraulic
Mast can be lowered	hydraulic
Fuel tank (litre)	8000, 4 tanks
Level indicator (fuel tank)	yes
Freshwater tank (litre)	2500, 2x tanks
Level indicator (freshwater)	yes
Blackwater tank (litre)	1800, 2x tanks
Level indicator (blackwater)	Tankwatch
Blackwater tank extraction	deck extraction + pump
Wheel steering	hydraulic New 2007
Inside helm position	Portside
Outside helm position	Centre
Flybridge helm position	hydraulic New 2007
Emergency tiller	yes
Extra info	Vessel has a valid CVO certification
Extra info	Lots of invoices available of refit done in 2022
Extra info	Economical long distance cruise

ACCOMMODATION

Cabins	4
Berths	8
Interior	teak Cream panels + teak trim
Floor	teak and holly
Open cockpit	yes
Pilot house	yes
Deck saloon	yes
Headroom saloon (m)	1,98 - 2,02
Heating	Eberspacher D16W



TRAWLER EXPLORER 60

Air-conditioning	reverse cycle airco Webasto/CLD 40.000 BTU all cabins
Chart table	yes
Aft Cabin	yes
Dinette	With two separate seats opposite
Opening door to cockpit	yes
Opening door to aft deck	Partible door
Galley	yes
Countertop	Duropol L shape
Sink	stainless steel
Cooker	electric Force 10
Extractor	yes
Microwave/oven combi	LG (220V)
Fridge	Miele + extra in pilothouse
Freezer	Miele
Hot water system	220V + engine 2x boiler
Water pressure system	electrical
Dishwasher	Siemens
Owners cabin	double bed
Bed length (m)	2,00 x 1,60
Wardrobe	hanging/drawers/shelves
Bathroom	en suite I
Toilet	en suite
Toilet system	electric Vacu-flush
Wash basin	in the bathroom
Shower	en suite
Extra info	Tempur matrass
Guest cabin 1	double bed VIP-cabin
Bed length (m)	2,00 x 1,80
Wardrobe	hanging and shelves
Bathroom	en suite
Toilet	en suite
Toilet system	electric Tecma



TRAWLER EXPLORER 60

Wash basin	at the toilet
Shower	en suite
Extra info	Tempur matrass
Guest cabin 2	yes
Bed length (m)	2,00 x 1,35
Wardrobe	hanging and shelves
Bathroom	yes
Toilet	shared
Toilet system	electric Vacuflush
Wash basin	in the bathroom
Shower	shared Prepared
Extra info	Tempur matrass
Guest cabin 3	bunk bed
Bed length (m)	2,00 x 0,80
Wardrobe	shelves
Bathroom	yes
Toilet	shared
Toilet system	electric Vacuflush
Wash basin	in the bathroom
Shower	shared Prepared
Extra info	Tempur matrass
Washing machine/dryer combi	Miele Hydromatic WT745
Central vacuum cleaner	Dust-Control

MACHINERY

No of engines	2
Make	Cummins
Type	6BT5.9M
HP	210
kW	154.35
Fuel	diesel



TRAWLER EXPLORER 60

Year installed	1997
Maximum speed (kn)	11
Cruising speed (kn)	8
Consumption (l/hr)	20
Range (nm)	3000
Engine hours	2680
Engine cooling system	freshwater heat exchanger
Drive	shaft
Shaft seal	Shaft and seals replaced in 2023
Engine controls	electrical EMC
Gearbox	hydraulic
Engine controls	electrical & bowden cable Plus remote control Hydronautica
Bowthruster	hydraulic 35 hp proportional
Sternthruster	electric 2022 new 2 speed Sleipner 24 Volt on 4 batteries
Exhaust	watercooled
Thrust bearing	Amartech
Propeller type	fixed Left/right counter rotating
Propeller blades	4
Propeller shaft material	stainless steel Amartech, with rope cutters
Shaft lubrication	water
Electric bilge pump	4x
Bilge alarm	yes
Electrical installation	12/24/230 V
Generator	silent separator Onan E-QD 11kW
Running hours generator	1275
Generator 2	Hydrogen 10kW (hydraulic)
Start battery	2x
Service battery	4x Mastervolt Lion cells 4x 24 V / 5000 Wh
Generator battery	1x + Mastervolt charger
Sternthruster battery	2022 4x
Battery monitor	Mastervolt + automatic AC switching
Battery charger	Mastervolt 24 V/20-3



TRAWLER EXPLORER 60

Battery charger/inverter	2x Mastervolt 24 V/2000 Watt/60 Amp
Diode battery combiners	yes
Shorepower	with cable
Insulation transformer	Mastervolt Mass Gi3.5 + insulation checkpanel
Watermaker	yes
Stabilizers	fin Koopnautic Searocq246 (hydraulic)
Extra info	Flowscan fuelconsumption indicators
Extra info	Mastervolt GPRS monitor-module prepared for cellphone app
Extra info	Debug fuel filter system/fuel polishing system

NAVIGATION

Compass	Ritchie
Compass on flybridge	Ritchie
Electric compass	On autopilot
Depth sounder	Simrad IS42
Log	Simrad IS42
Windset	yes
Repeater	Simrad
VHF	Garmin GHS10i + Furuno H2721 new antenna's 2023
VHF handheld	Icom + Cobra Marine
Autopilot	Simrad AP35 + Simrad FU35 joystick
Rudder angle indicator	Simrad
Radar	Furuno 17" open array
GPS	Furuno Navnet
Plotter	Furuno Navnet + flybridge repeater
PC connection	2x 23 inch
Electronic chart(s)	2x Time Zero / Yacht Control
AIS transponder	Furuno Navnet Class B
EPIRB	McMurdo battery until Sept 2031
Navigation lights	yes
Searchlight	ITT remote



TRAWLER EXPLORER 60

Extra info

Shipmodule Nmea / actisense NMEA 2000

Extra info

RR Active antenna system

EQUIPMENT

Fixed windscreen

yes

Cockpit cover

Full enclosure

Bimini

On fly

Cockpit cushions

yes

Bathing platform

"beach" fold-down type hydraulic

Boarding ladder

aluminum

Transom door

Side door

Gangway

Aluminum

Deck shower

yes

Anchor

Bruce

Anchor chain

120 mtr plus 50 mtr rope (2019)

Windlass

hydraulic Lofrans ProjectX4 (2019)

Windlass aft

hydraulic 2x Meissner (capstan 2-speed)

Deck wash

Fore and aft

Dinghy

rigid inflatable 3D Tender 3.90 2022

Outboard

Suzuki DF20A 2022

Deck crane

hydraulic Opacmare (500kg) revision 2024

Sea railing

yes

Grab rail (superstructure)

aluminium

Railing side opening gates

2x

Pushpit

yes

Pulpit

yes

Life raft

valise (or bag) Seasava PlusX

Life raft (pers)

6

Last life raft survey

\June 21

Lifejackets

yes

Lifebuoy

2x (+life sling)



TRAWLER EXPLORER 60

Wiper	5x Exalto + wash
Horn	air pressure
Fenders	yes
Mooring lines	yes
Spare parts	yes
Tools	yes
Alarm system	yes
TV	Samsung in lift-cabinet
TV receiver	yes
Satellite	Starlink plus Wifi all over the vessel
TracVision ball	KVH dome only , inside several antennas
Radio-cd player	3x
DVD player	Samsung
Surround Sound System	yes
Cockpit speakers	Plus on flybridge
Speakers in salon	yes
Speakers in cabin	yes
Clock - barometer	Complete Schatz set
Fire extinguisher	2x 6ltr
Latest extinguisher survey	Sept 2023
Extinguisher in engine room	yes
Auto extinguisher system	12x Knock-Out (2018)



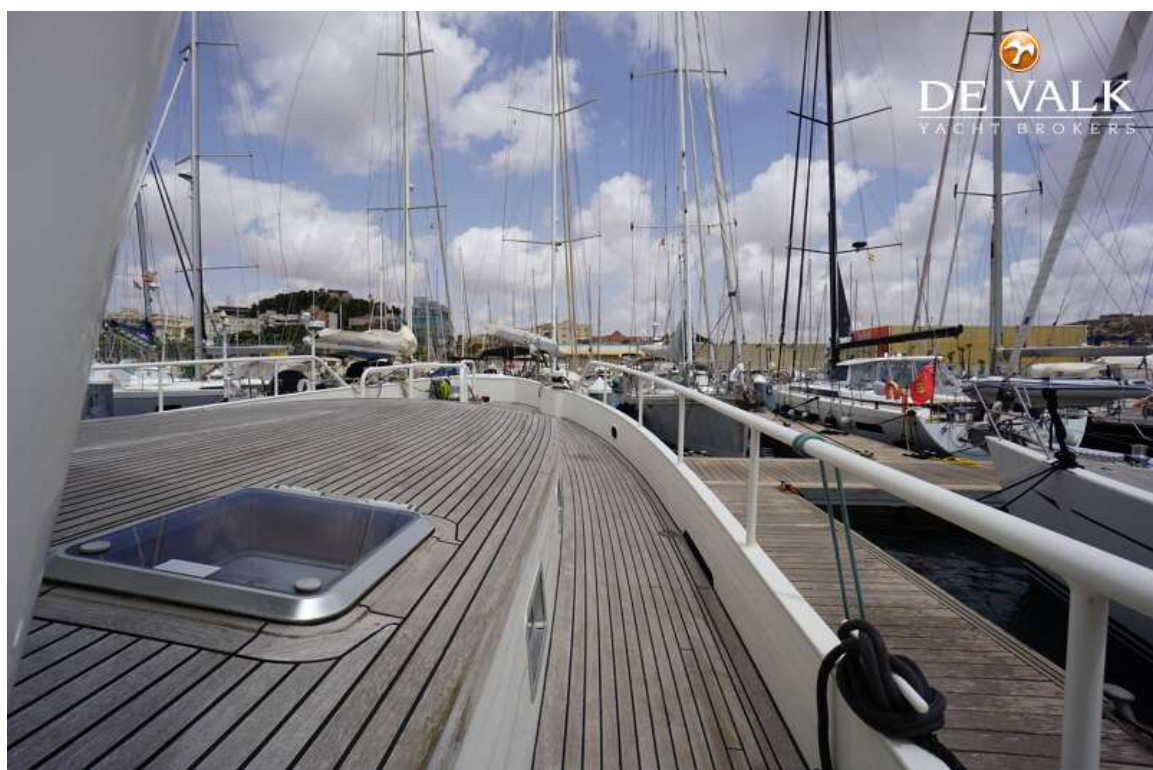
TRAWLER EXPLORER 60



TRAWLER EXPLORER 60



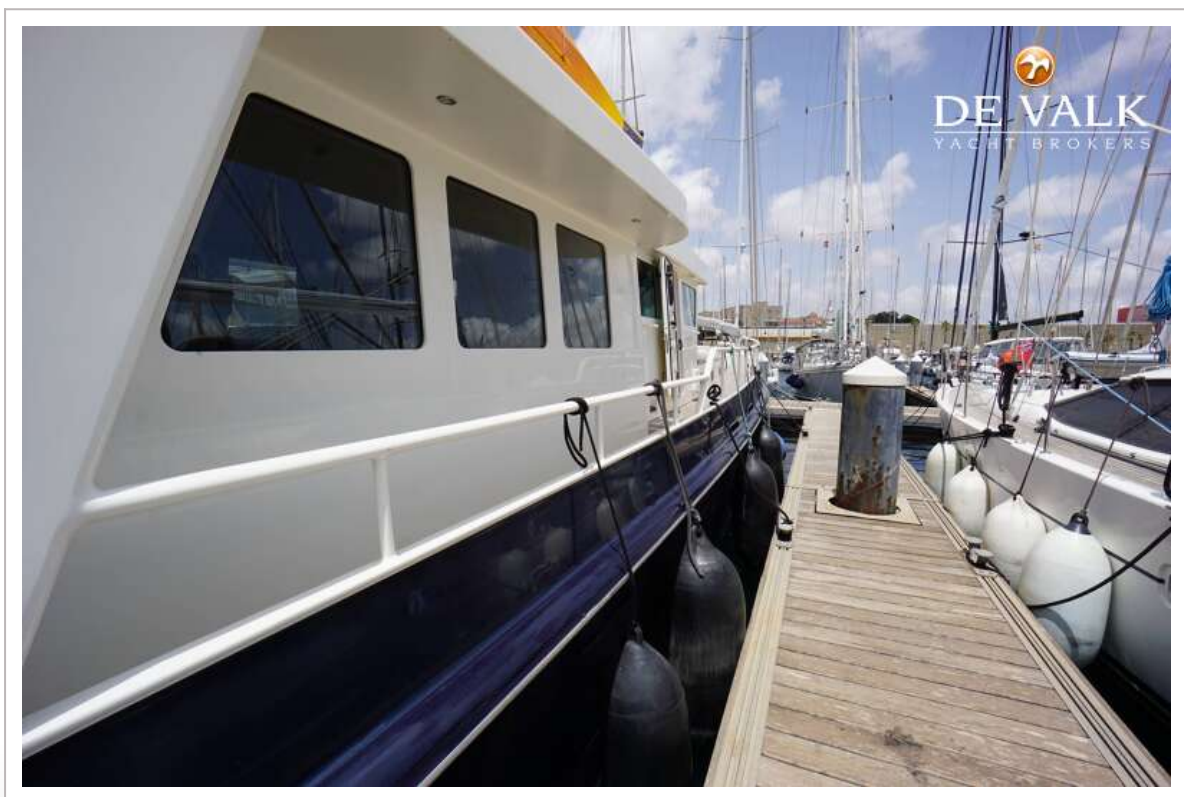
TRAWLER EXPLORER 60



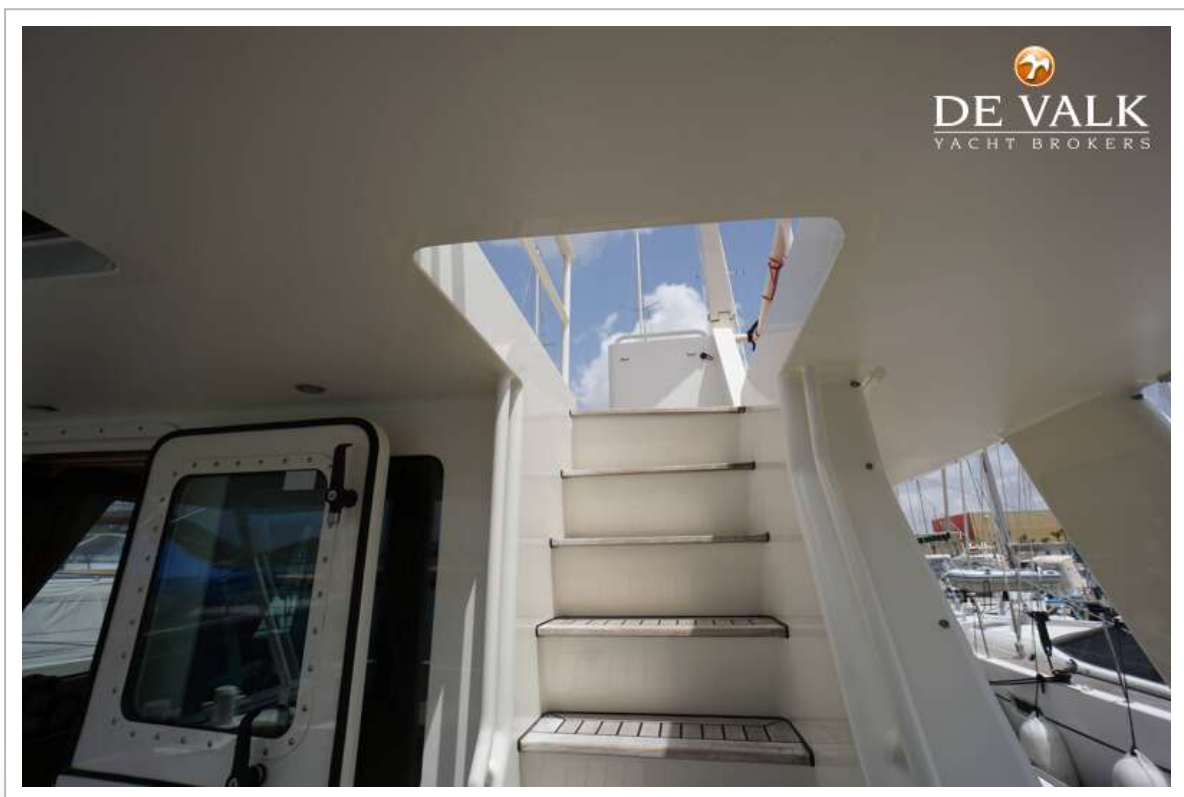
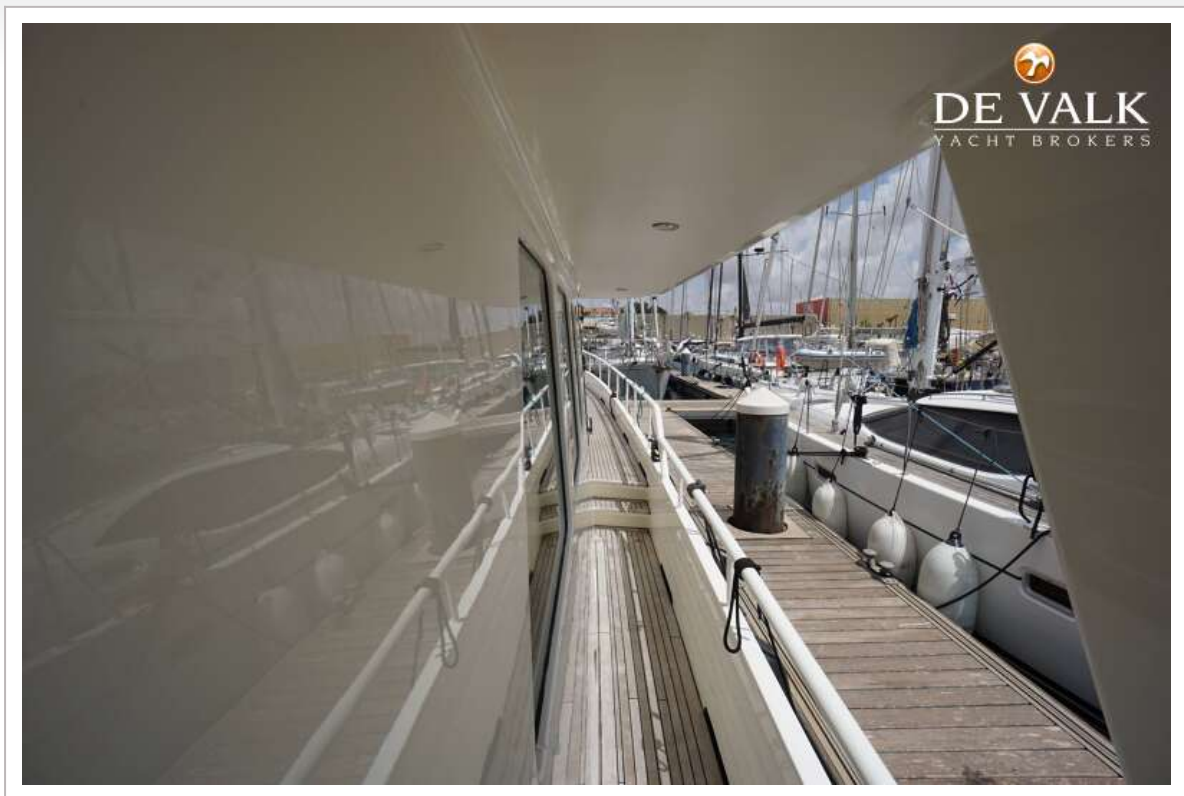
TRAWLER EXPLORER 60



TRAWLER EXPLORER 60



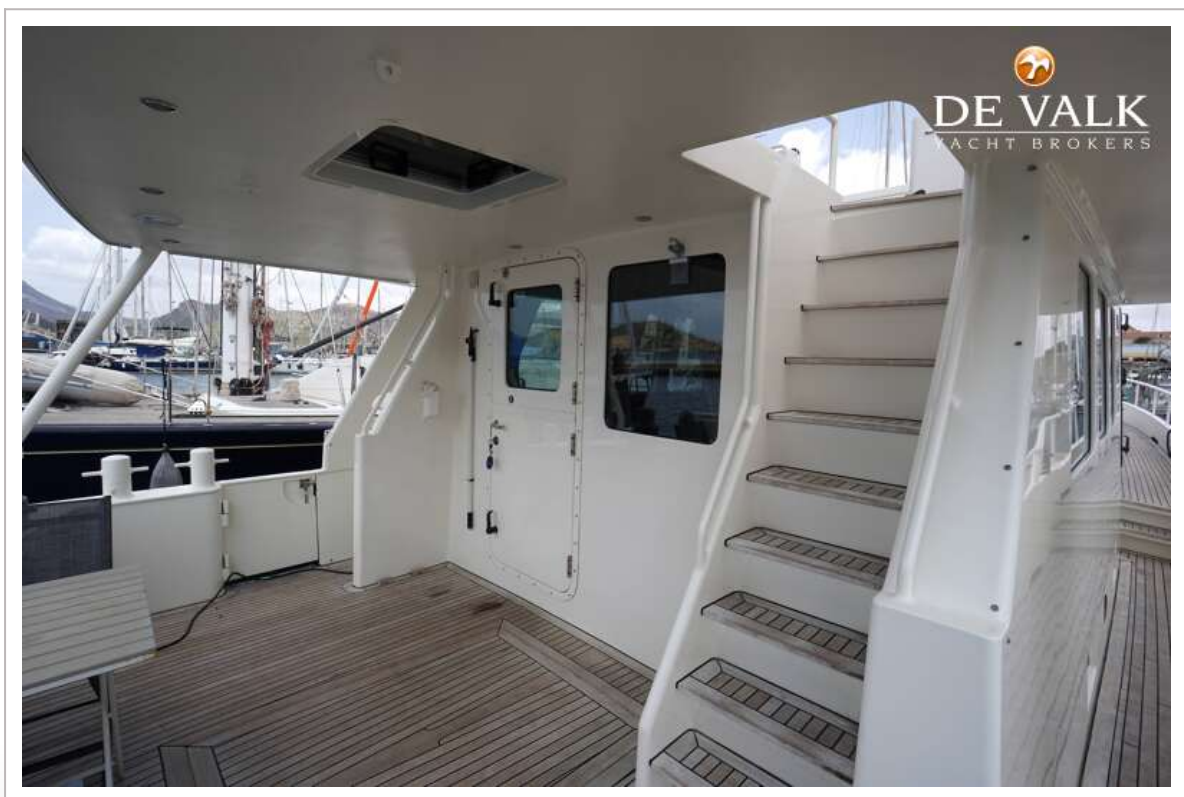
TRAWLER EXPLORER 60



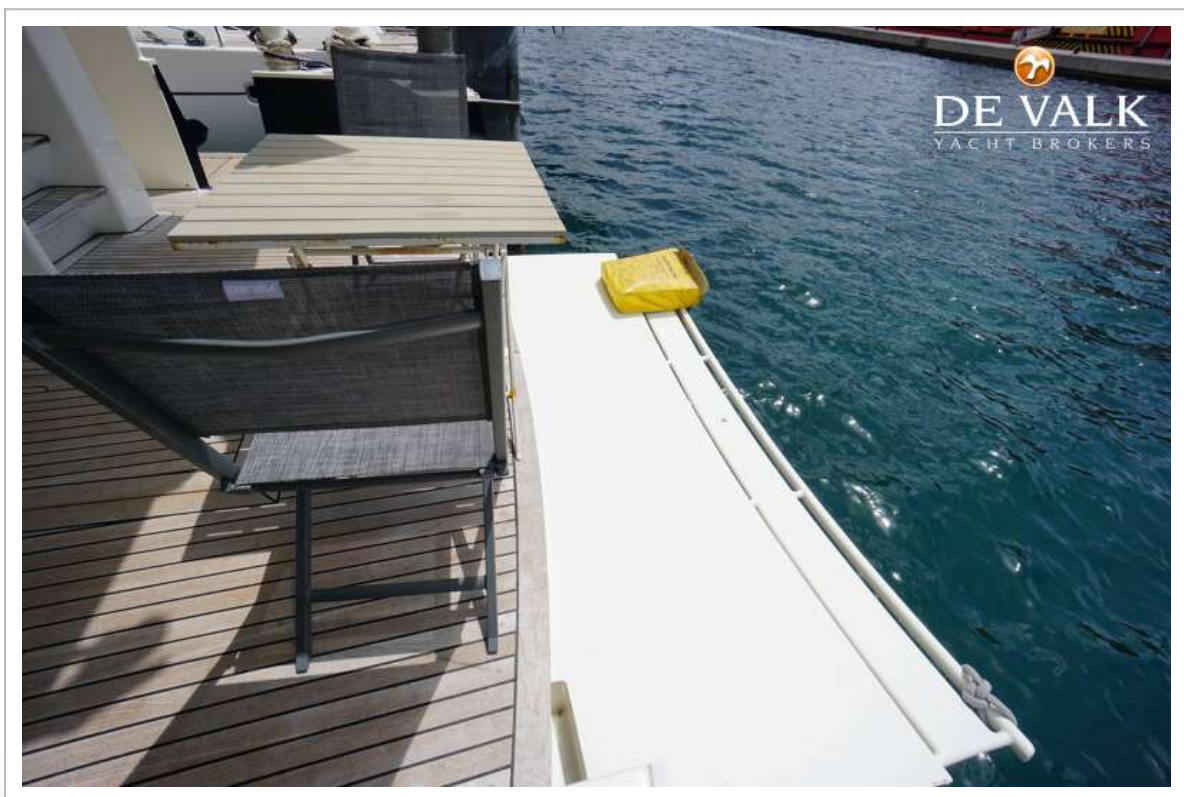
TRAWLER EXPLORER 60



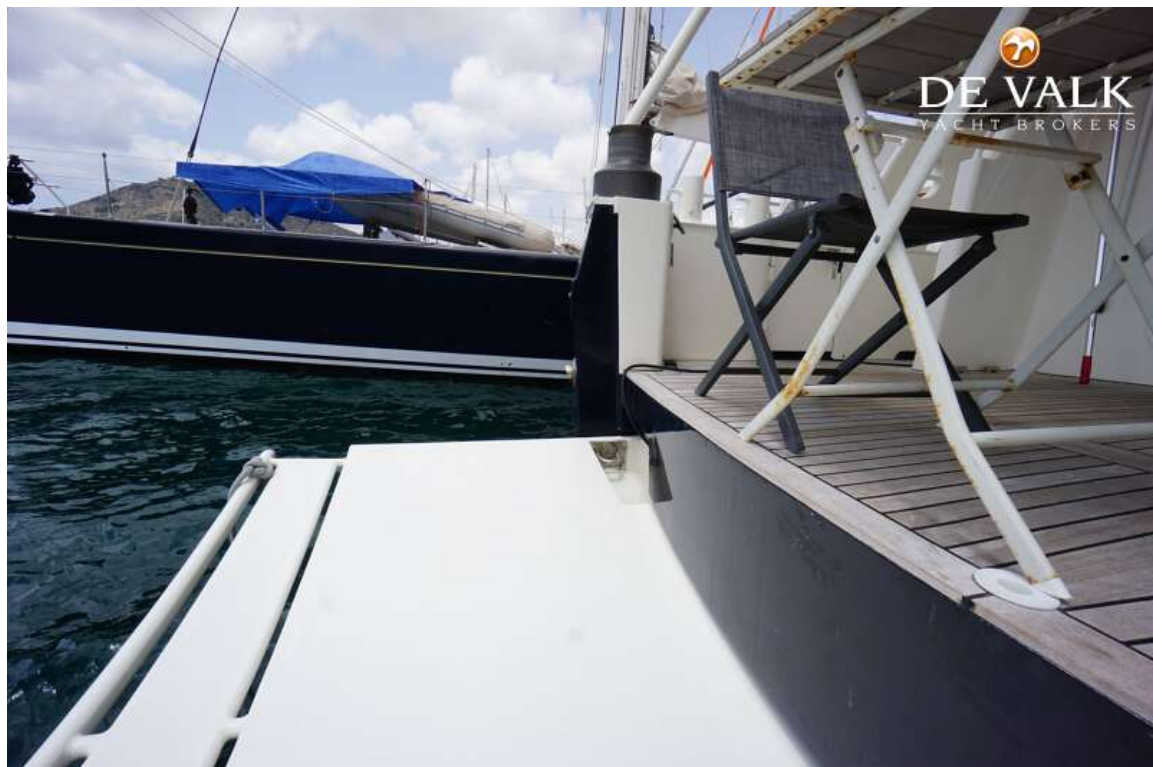
TRAWLER EXPLORER 60



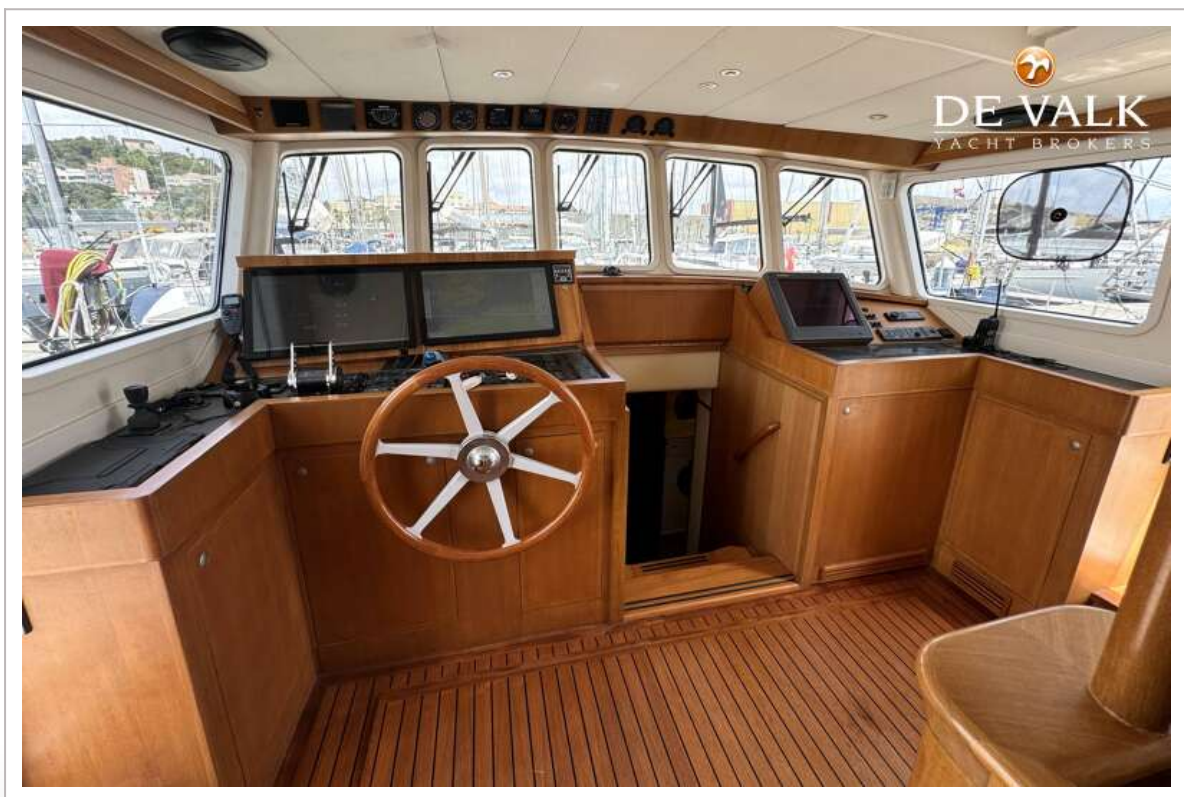
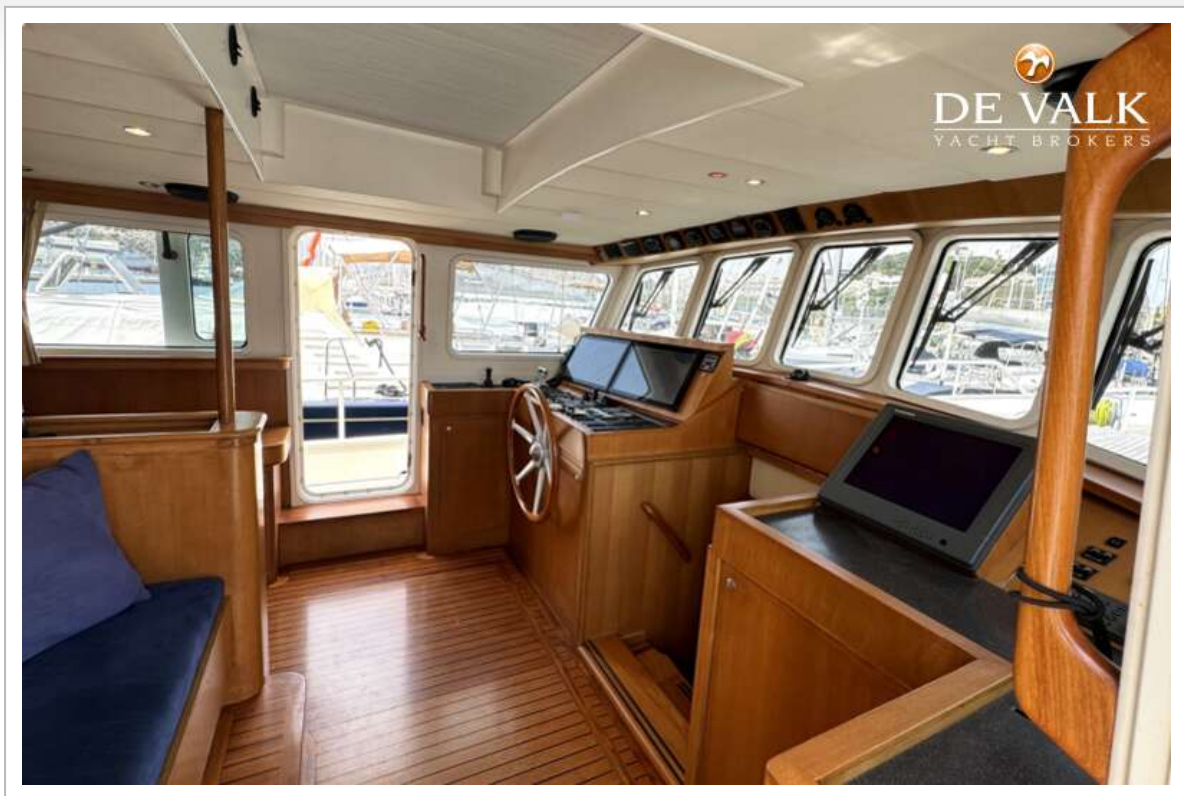
TRAWLER EXPLORER 60



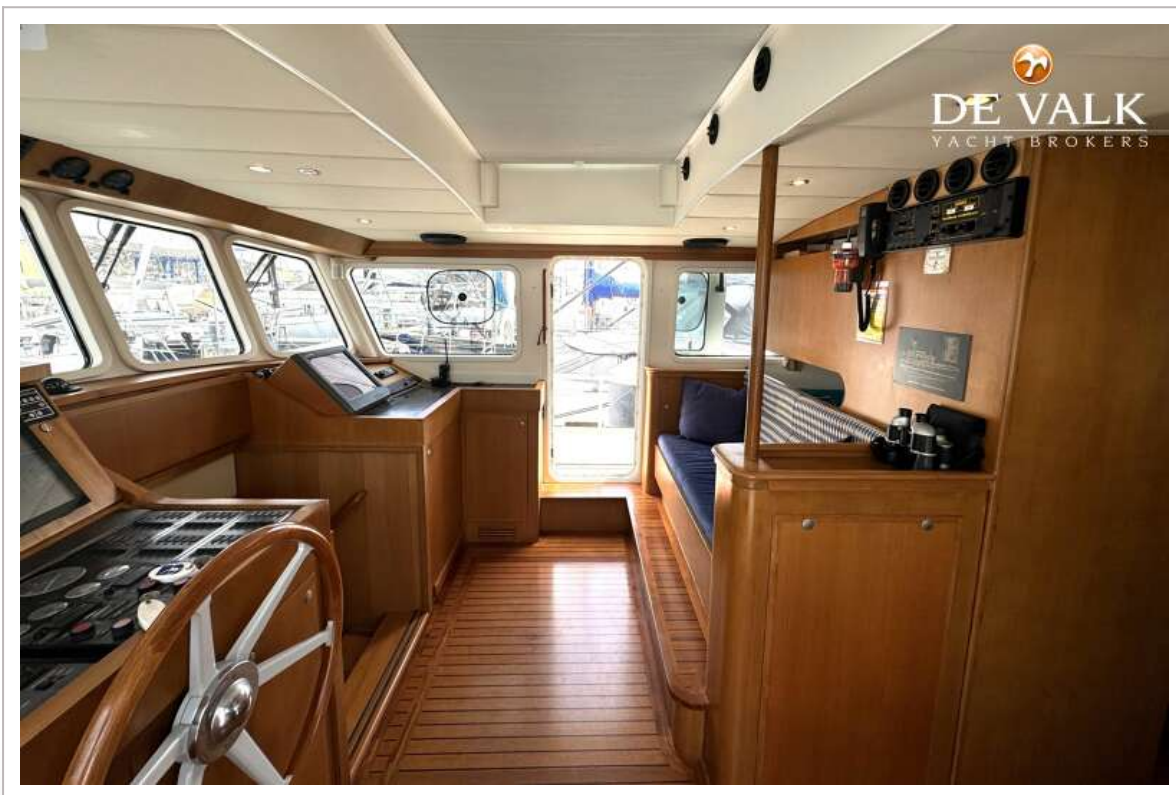
TRAWLER EXPLORER 60



TRAWLER EXPLORER 60



TRAWLER EXPLORER 60



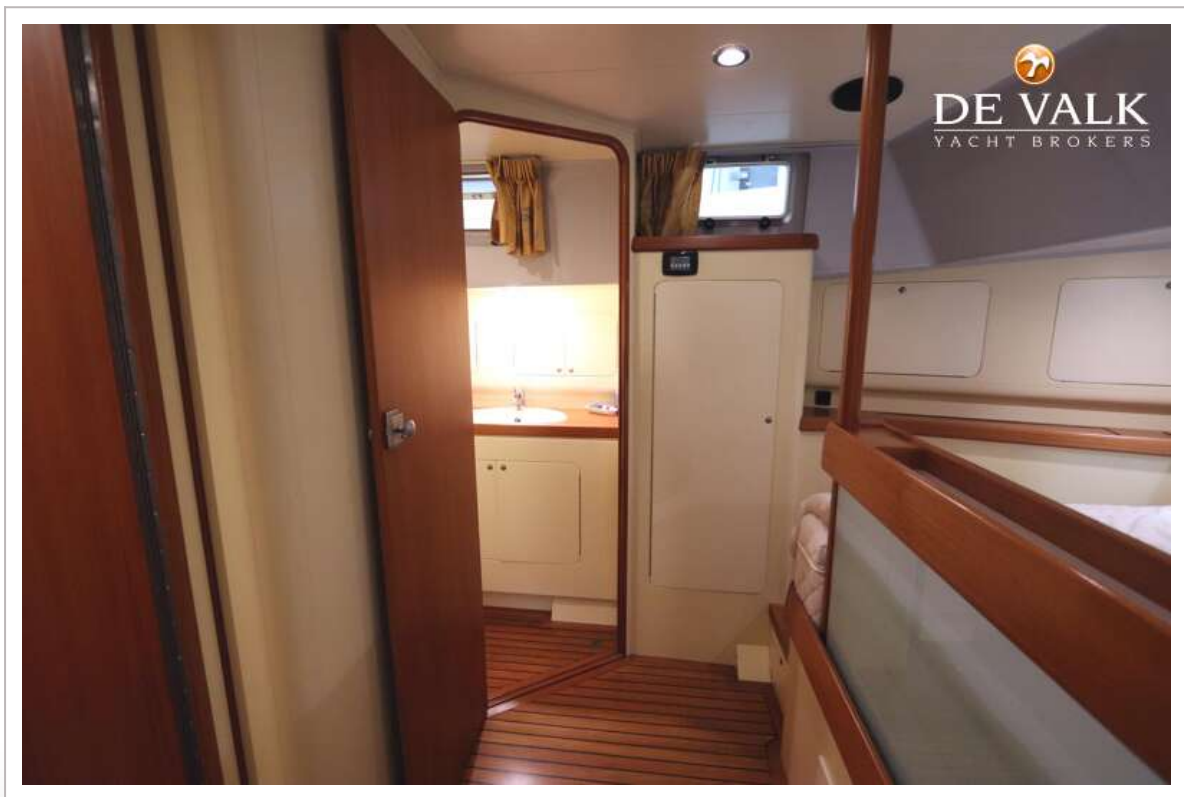
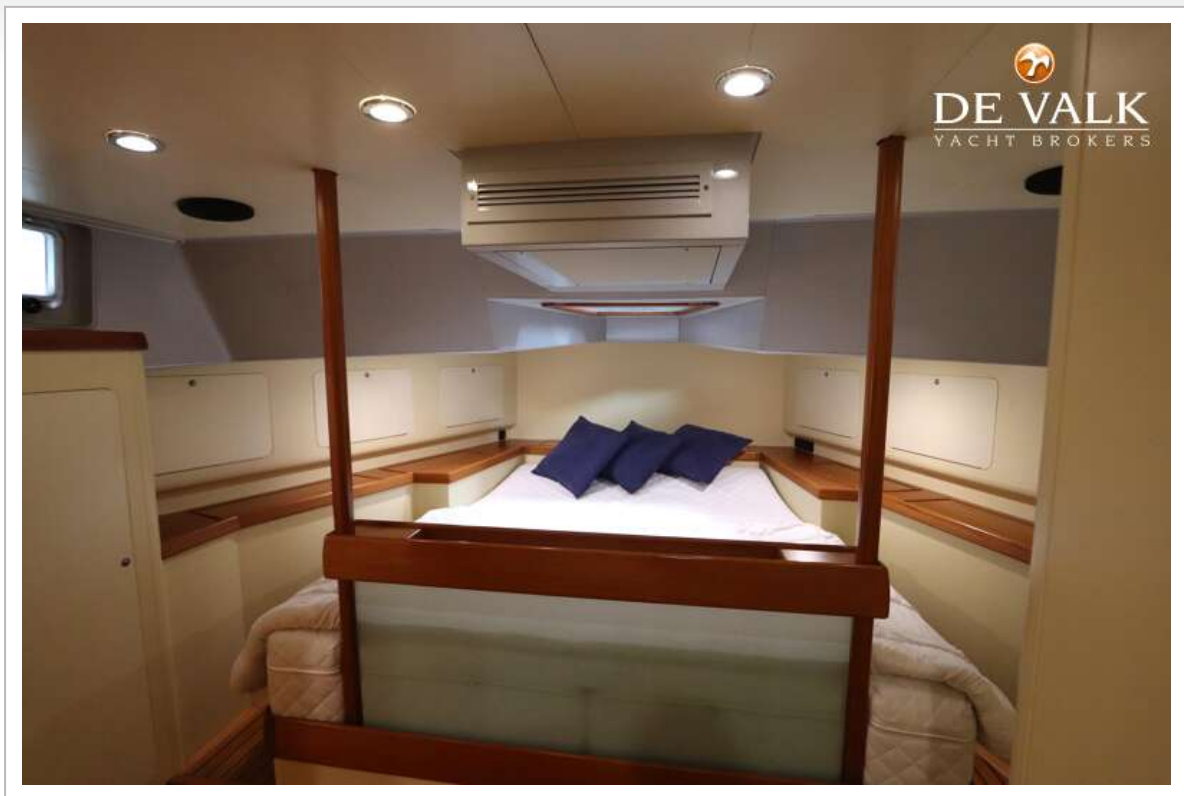
TRAWLER EXPLORER 60



TRAWLER EXPLORER 60



TRAWLER EXPLORER 60



TRAWLER EXPLORER 60



TRAWLER EXPLORER 60



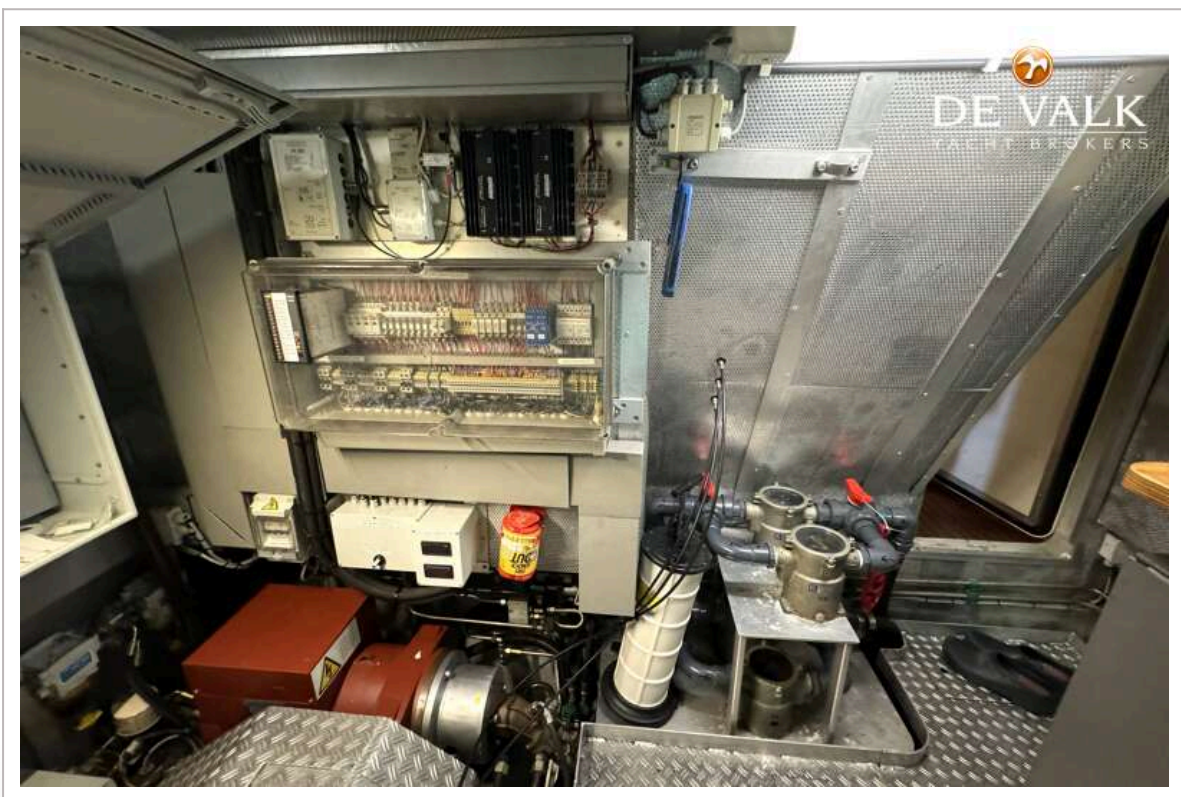
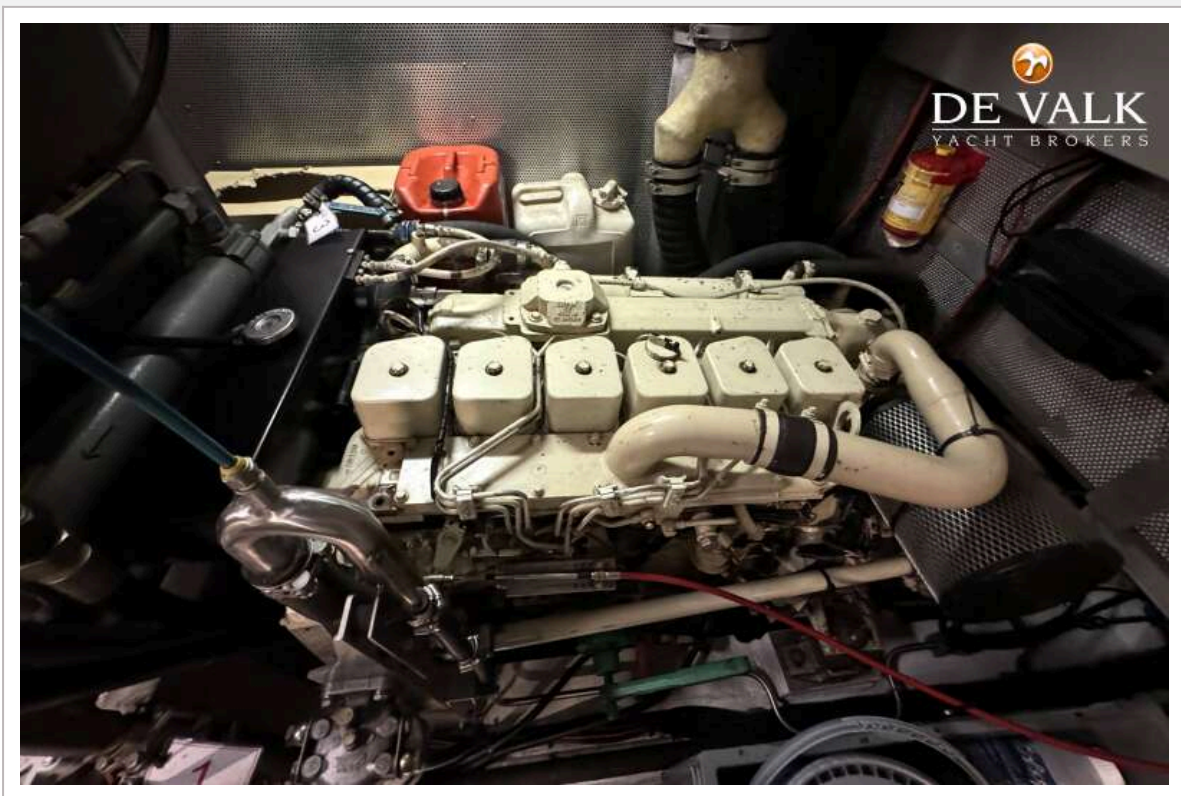
TRAWLER EXPLORER 60



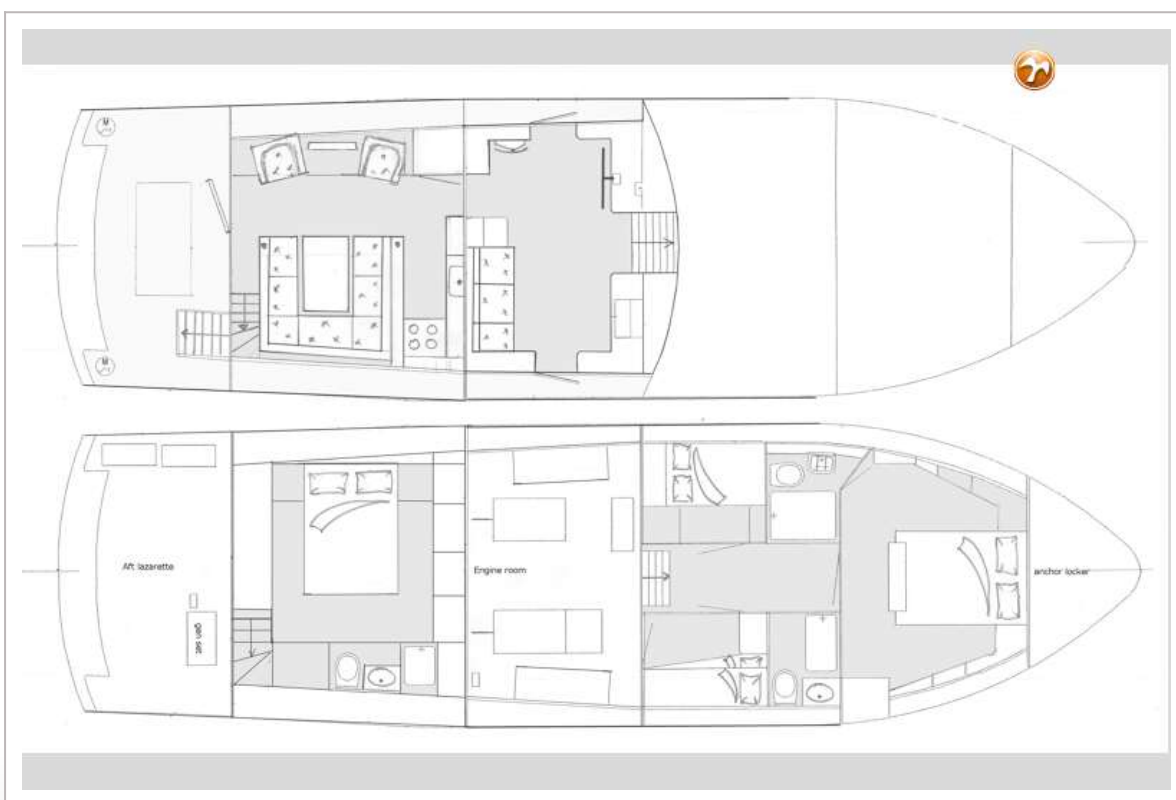
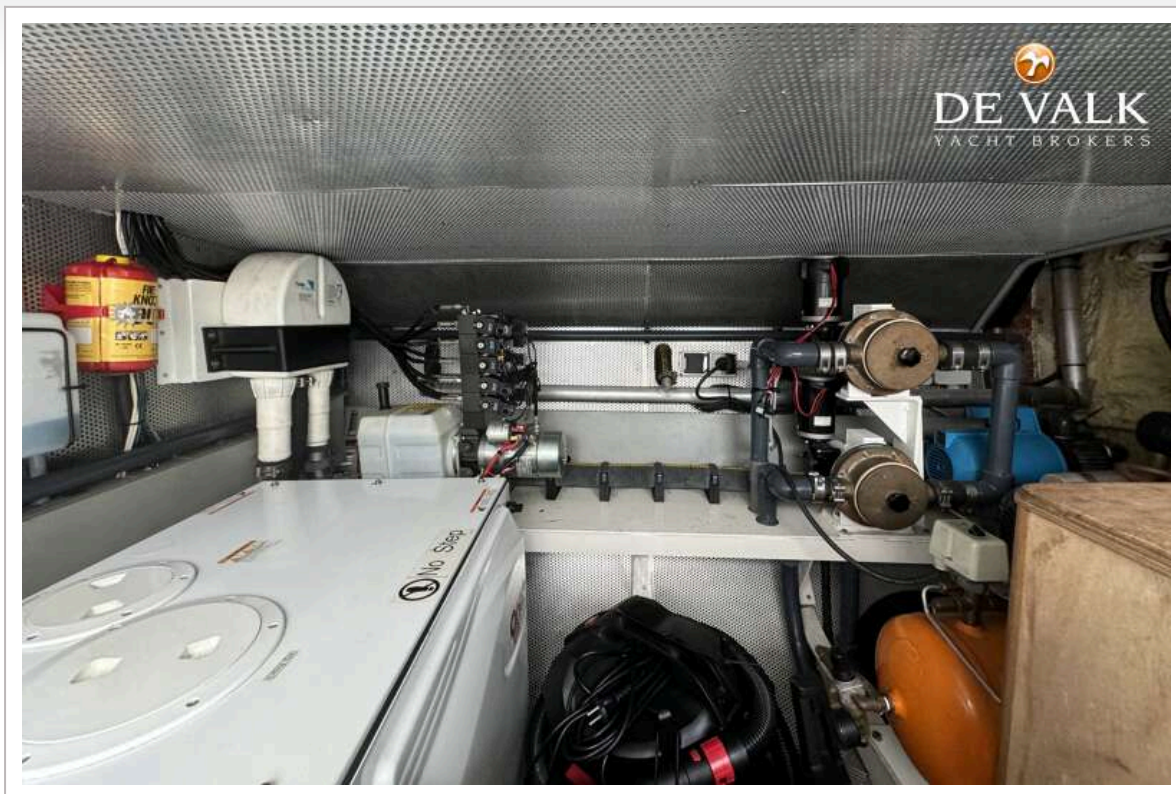
TRAWLER EXPLORER 60



TRAWLER EXPLORER 60



TRAWLER EXPLORER 60



TRAWLER EXPLORER 60

