



DE VALK
YACHT BROKERS



BAVARIA C50 STYLE



DE VALK
YACHT BROKERS

BAVARIA C50 STYLE

BROKER'S COMMENTS

This Bavaria C50 Style is already a fixed part of the booking plan for 2024 and can be taken over immediately in the charter purchase model. We advise you on setting up a company and take care of marketing, charter management and service for you. Become a happy owner with the Yachtinvest model. Yields of up to 8% are realistic in the charter purchase model. However, it offers the yacht owner almost cost-neutral sailing vacations. If you have any questions about Yachtinvest, please do not hesitate to contact us personally! Extra options still could be added.

Eric Lamers

SPECIFICATIONS

Dimensions	15.55 x 4.95 x 2.30 (m)	Builder	Bavaria Yachtbau
Built	2024	Cabins	5
Material	GRP	Berths	10
Engine(s)	1 x Yanmar diesel	Hp/Kw	80 (hp), 58.88 (kw)
Asking price	€ 465.000 (VAT)	Lying	contact Antibes

CONTACT

Sales office	De Valk Antibes	Telephone	+33 492 91 0202
Address	2, Avenue de Verdun 06600 Antibes France	E-mail	antibes@devalk.nl

DISCLAIMER

These particulars are given in good faith as supplied but cannot be guaranteed.



BAVARIA C50 STYLE

GENERAL

Model	BAVARIA C50 STYLE
Type	sailing yacht
LOA (m)	15,55
LWL (m)	14,28
Beam (m)	4,95
Draft (m)	2,30
Headroom (m)	2,00
Year built	2024
Builder	Bavaria Yachtbau
Country	Germany
Designer	Cossutti Yacht Design
Displacement (t)	15,4
CE norm	A
Hull material	GRP
Hull colour	white
Cockpit deck finish	teak
Fuel tank (litre)	244L
Freshwater tank (litre)	620L
Wheel steering	X2

ACCOMMODATION

Cabins	5
Berths	10
Crew cabin	1
Crew berths	Twin single (1+1)
Heating	8kW salon & cabins
Toilet	yes
Toilet system	electric



BAVARIA C50 STYLE

MACHINERY

No of engines	1
Make	Yanmar
HP	80
kW	58.88
Fuel	diesel
Drive	sail-drive
Bowthruster	yes
Propeller type	fixed
Propeller blades	4
Manual bilge pump	yes
Electric bilge pump	yes
Bilge alarm	yes
Batteries	BOS LE300 Lithium / 200Ah
Start battery	yes
Service battery	yes
Bowthruster battery	yes
Battery charger	yes
Shorepower	with cable 220V

NAVIGATION

Compass	Hand bearing
Depth sounder/log	Lot/speed/wind
Windset	yes
VHF	B&G V60 with integrated AIS receiver
Autopilot	yes
Plotter/GPS	B&G Zeus35 9" with integrated GoFree™ Wi-Fi
Electronic chart(s)	yes
AIS receiver	yes
EPIRB	yes
Navigation lights	yes



BAVARIA C50 STYLE

Searchlight	yes
Loudhailer	yes

EQUIPMENT

Sprayhood	yes
Bimini	yes
Cockpit cushions	yes
Cockpit table	yes
Cockpit chairs	yes
Bathing platform	yes
Boarding ladder	yes
Gangway	yes
Anchor	25kg
Anchor chain	75m
Anchor 2	Spare anchor / auxiliary
Anchor chain	yes
Windlass	electrical
Dinghy	yes
Life raft	yes
Lifejackets	yes
Safety harness	yes
Lifebuoy	yes
Danbuoy	yes
Rope cutter	yes
Horn	yes
Fenders	yes
Mooring lines	yes
Tools	yes
Radio	Fusion MS-RA770 Apollo (AM, FM, Bluetooth, WiFi, AUX, USB)
Cockpit speakers	yes
Clock - barometer	yes



Fire extinguisher	yes
Extra info	USB sockets - x2 at navigation table and x1 in each cabin

RIGGING

Rigging	sloop
Standing rigging	wire
Material mast	aluminium
Spreaders	2
Mainsail	75 m ²
Stoway mast	yes
Genoa	yes
Genoa furler	yes
Boomvang	yes
Genoa sheetwinches	yes
Halyard winches	yes



BAVARIA C50 STYLE



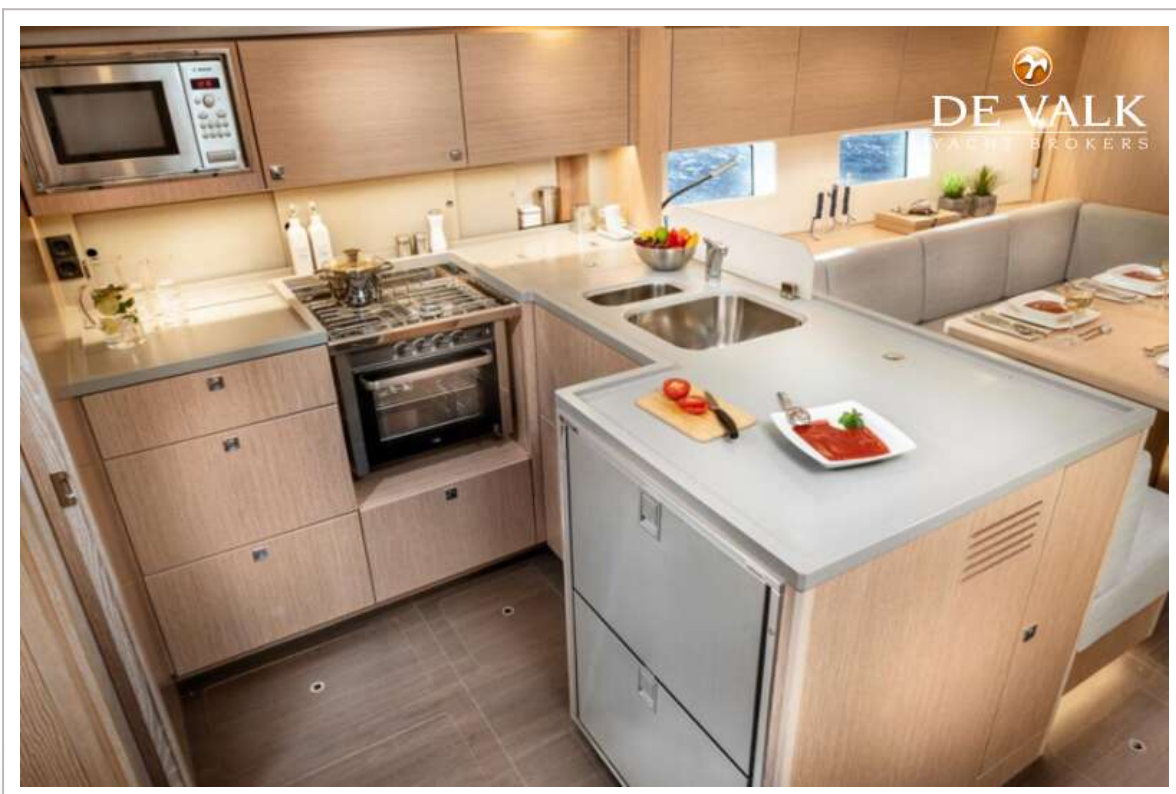
BAVARIA C50 STYLE



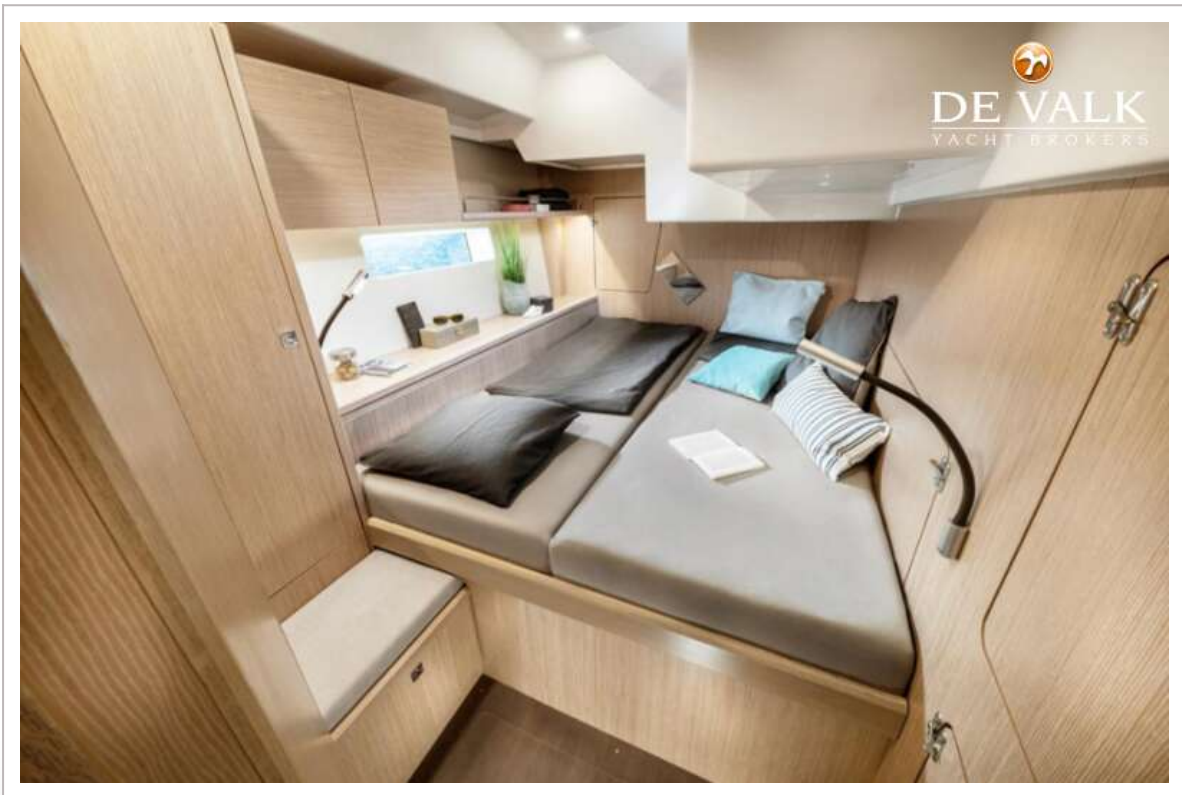
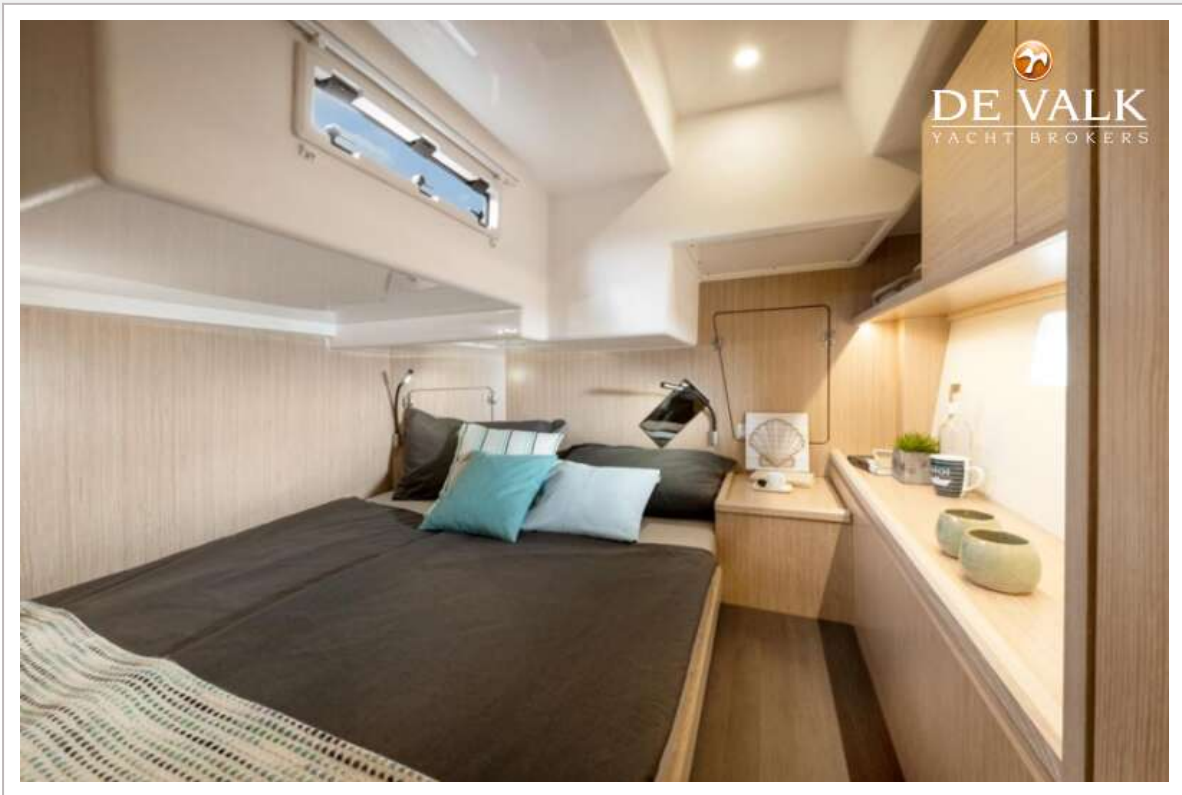
BAVARIA C50 STYLE



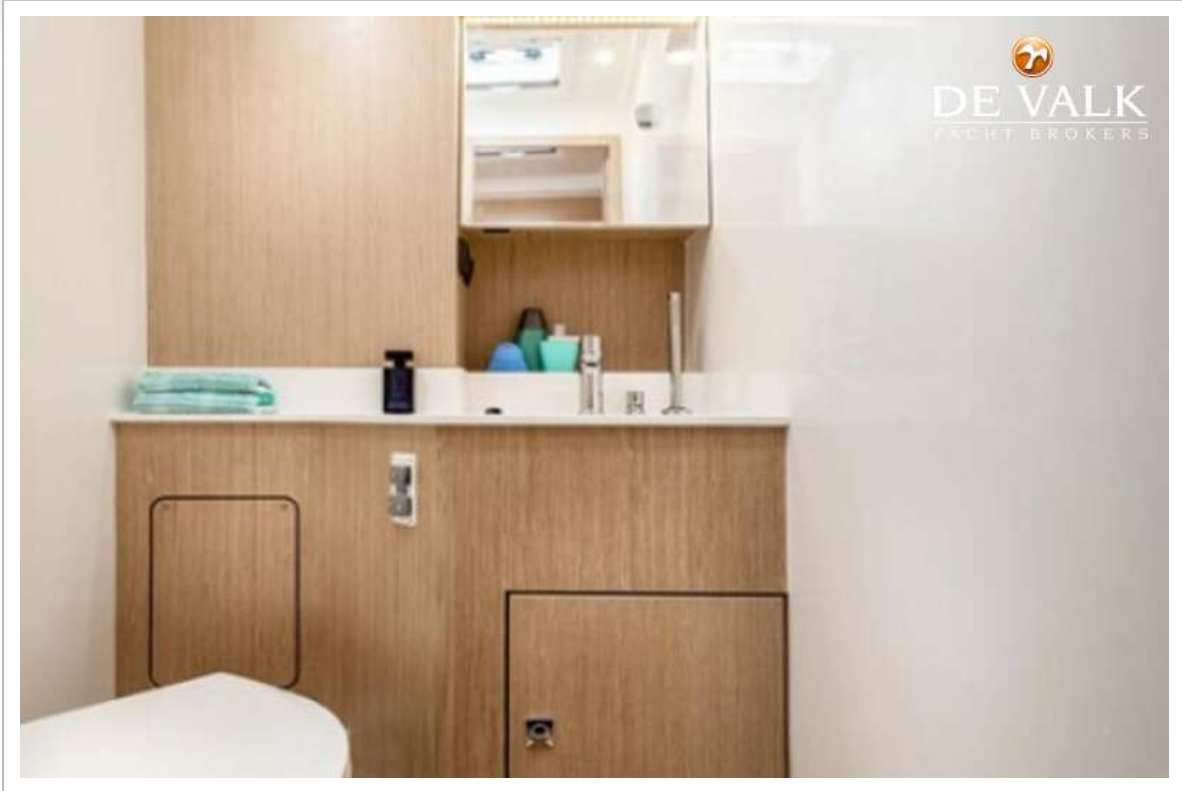
BAVARIA C50 STYLE



BAVARIA C50 STYLE



BAVARIA C50 STYLE



BAVARIA C50 STYLE

