



DE VALK

YACHT BROKERS



GULFSTAR 60 MKII



DE VALK
YACHT BROKERS

BROKERAGE | CHARTER | BERTHS | FINANCE | INSURANCE | YACHT MANAGEMENT

GULFSTAR 60 MKII

BROKER'S COMMENTS

The Gulfstar MKII is a fast, seaworthy yacht with hydraulic furling sails, electric winches, comfortable and spacious interior with 4 cabins & 3 heads. The engine, generator, Watermaker, Raymarine instruments & upholstery renewed in 2008. The complete rig, hydraulic furlers, sails, 220 V system, freshwater piping, Camara system, radar & sun awning over entire deck been renewed in 2014. Since 2023 the deck & superstructure were painted, windows & portholes overhauled & new compressors (fridge & freezer) installed. Contact De Valk Sint Annaland to make an appointment for a visit in Scheveningen.

Jan-Ward van Dantzig

SPECIFICATIONS

| | | | |
|---------------------|----------------------------|----------------|---------------------------------|
| Dimensions | 18.44 x 4.88 x 2 (m) | Builder | Gulfstar Yachts |
| Built | 1986 | Cabins | 4 |
| Material | GRP | Berths | 8 |
| Engine(s) | 1 x Yanmar 4LHA-HTP diesel | Hp/Kw | 160 (hp), 117.76 (kw) |
| Asking price | € 229.500 (VAT Paid) | Lying | elsewhere / not at sales office |

CONTACT

| | | | |
|---------------------|---|------------------|------------------------|
| Sales office | De Valk Sint Annaland | Telephone | +31 166 601 000 |
| Address | Koelhuisweg 4 4697 RM Sint Annaland The Netherlands | E-mail | sintannaland@devalk.nl |

DISCLAIMER

These particulars are given in good faith as supplied but cannot be guaranteed.



GULFSTAR 60 MKII

GENERAL

| | |
|----------------------------|---|
| Model | GULFSTAR 60 MKII |
| Type | sailing yacht |
| LOA (m) | 18,44 |
| LWL (m) | 14,73 |
| Beam (m) | 4,88 |
| Draft (m) | 2,00 |
| Air draft (m) | 24,00 |
| Headroom (m) | 2,00 |
| Year built | 1986 |
| Builder | Gulfstar Yachts |
| Country | U.S.A. |
| Designer | R. C. Lazzarra |
| Displacement (t) | 27,25 |
| Ballast (tonnes) | lead 7,7 |
| CE norm | A |
| Hull material | GRP |
| Hull colour | white Oyster White - painted in 2010 |
| Hull shape | S-bilged |
| Keel type | long keel |
| Superstructure material | GRP |
| Rubbing strake | stainless steel Strip on a teak rubbing strake |
| Deck material | GRP |
| Deck finish | non-skid paint In 2023 painted in Perfection Oyster White |
| Superstructure deck finish | non-skid paint In 2023 painted in Perfection Oyster White |
| Cockpit deck finish | synthetic teak Applied in 2014 |
| Antifouling (year) | 2023 |
| Dorades | Stainless steel |
| Window frame | stainless steel Dismounted & overhauled & rubbers renewed in 2023 |
| Window material | perspex (Renewed in 2023) With rollo's (2014) |
| Deckhatch | Vetus - with rollo's (2014) |



GULFSTAR 60 MKII

| | |
|-------------------------------------|--|
| Portholes | aluminium Dismounted & overhauled & rubbers renewed in 2023 |
| Insulation | Balsa wood; deck, superstructure, hull till just under waterline |
| Radar arch | non collapsible Stainless steel |
| Fuel tank (litre) | stainless steel 1400 |
| Level indicator (fuel tank) | VDO |
| Freshwater tank (litre) | GRP 1500 |
| Level indicator (freshwater) | VDO |
| Blackwater tank (litre) | stainless steel 3 x |
| Blackwater tank extraction | deck extraction + uw line 3 x |
| Wheel steering | mechanical Leather covered stainless steel steering wheel |
| Outside helm position | yes |
| Emergency tiller | yes |
| More info on hull | Full length strings and floors stiffen the very solid hull |
| More info on paintwork | In 2023 the deck and the superstructure have been treaded with 9 layers of epoxy primer, one layer of International 3 components primer Perfect Pro. Afterwards the deck, the superstructure and the cockpit have been painted twice in High Gloss Perfection Pro Artic White. |
| Extra info | All old layers of antifouling have been removed from the underwater hull in 2017 and then an epoxy system was applied (not due to osmosis). |
| Extra info | The Balsa wood sandwich construction of the deck and superstructure have an increased moisture content. This has been locally repaired, but still requires further attention. |
| Extra info | The deck space is terrific with outward deck mounted chainplates. 6 x Stainless steel mooring cleat and fairlead. Very large storage in the bow. The cockpit is modern with long seats easy to lie down on. |

ACCOMMODATION

| | |
|-------------------|--|
| Cabins | 4 |
| Berths | 8 |
| Crew cabin | Starboardside from companionway is walkthrough to captains cabin |



| | |
|-------------------------|---|
| Crew berths | 1 x |
| Interior | teak With white pannels |
| Floor | teak and holly |
| Saloon | U-shaped dinette opposite a L-shaped settee with Off White leather upholstery (2010). |
| Headroom saloon (m) | 2,00 |
| Heating | diesel ducted hot air Planar (2022) with blowing points in aft cabin, saloon & galley |
| Air-conditioning | reverse cycle airco 2 x Webasto, with openings in all cabins & saloon (no chiller) |
| Chart table | Starboardside from companionway - Headroom : 2,00 m |
| Aft Cabin | Very spacious - Headroom : 2,00 m |
| Dinette | Teak |
| Opening door to cockpit | yes |
| Galley | On portside along the walkthrough - Headroom : 1,80 - 2,05 m |
| Countertop | Duropol Painted White Perfection Pro (2 compenents) in 2024 |
| Sink | stainless steel 2 x |
| Cooker | ceramic Aristron 2 burner - Half-Cardanic |
| Extractor | Dometic |
| Microwave/oven combi | Bosch Innnowave (2018) |
| Fridge | Top loader with a water cooled (pump renewed in 2024) Superfrigomat 5F compressor. |
| Freezer | Top loader with a water cooled (pump renewed in 2024) Frigoboat compressor. |
| Hot water system | 220V + engine 60 L Boiler (2008) |
| Water pressure system | electrical Cempump water pressure pump & all water piping renewed in 2014 |
| Ice maker | Not functioning |
| Owners cabin | French bed In aft cabin - Headroom : 2,00 m |
| Bed length (m) | 2,00 x 1,50 |
| Wardrobe | hanging/drawers/shelves |
| Bathroom | en suite Headroom : 1,90 m |
| Toilet | en suite In the bathroom |



| | |
|------------------------------------|---|
| Toilet system | vacuum Electric |
| Wash basin | in the bathroom |
| Shower | en suite Seperate cabin in the bathroom - Headroom : 2,00 m |
| Extra info | Mattresses renewed in 2018 with Lee-Cloths |
| Guest cabin 1 | bunk bed In front on starboard side - Headroom : 2,00 m |
| Bed length (m) | 2,00 x 0,85 & 2,00 x 0,80 |
| Wardrobe | hanging and shelves |
| Bathroom | shared In the bow - Headroom : 1,88 m |
| Toilet | shared In the bathroom |
| Toilet system | vacuum Electric |
| Wash basin | in the bathroom Stainless steel |
| Shower | shared Seperate cabin in the bathroom - Headroom : 1,88 m |
| Extra info | Mattresses renewed in 2018, with Lee-Cloths |
| Guest cabin 2 | bunk bed In front on port side - Headroom : 2,00 m |
| Bed length (m) | 2,00 x 0,85 & 2,00 x 0,80 |
| Wardrobe | hanging and shelves |
| Extra info | Mattresses renewed in 2018, with Lee-Cloths |
| Crew cabin(s) | 1 x Crew (Captain - 1 peron) Cabin - Amidships on Starboard Side - Bed : 2,00 x 0,80 m - Headroom : 1,95 m. |
| Bathroom (crew) | Between galley and crew cabin - Headroom : 1,95 m |
| Toilet (crew) | In the bathroom |
| Toilet system | vacuum Electric |
| Wash basin | in the bathroom |
| Shower (crew) | In the bathroom (with curtain) - Headroom : 1,95 m |
| Extra info | Mattress renewed in 2018, with a Lee-Cloth underneath |
| Washing machine/dryer combi | Zanussi TurboDry 1000 (HydroSystem - Xtra Capacity) |
| Extra info | During the refit in 2014 the following has been done : Isolation, leather on the ceiling plates and all lighting fixtures renewed. Ber Ozono water filter system installed in 2008. |
| Extra info | The superstructure has been painted in white epoxy on the inside (2023). 3 x Reading light in the saloon. |



MACHINERY

| | |
|--------------------------|---|
| No of engines | 1 |
| Make | Yanmar |
| Type | 4LHA-HTP |
| HP | 160 |
| kW | 117.76 |
| Fuel | diesel |
| Year installed | 2008 |
| Maximum speed (kn) | 9 |
| Cruising speed (kn) | 8 |
| Consumption (l/hr) | 5,5 |
| Engine hours | 2030 |
| Engine cooling system | freshwater heat exchanger |
| Drive | shaft |
| Shaft seal | yes |
| Engine controls | electrical (2008) |
| Gearbox | hydraulic (2008) |
| Bowthruster | electric Vetus |
| Exhaust | watercooled (2008) |
| Thrust bearing | Aquadrive (2008) |
| Propeller type | folding Gori (2008) |
| Propeller blades | 3 |
| Propeller shaft material | stainless steel |
| Shaft lubrication | water (2022) |
| Manual bilge pump | (2008) |
| Electric bilge pump | Blau Naval Marine Pump (2008) max 6,6m3/hour |
| Bilge alarm | (2008) |
| Electrical installation | 12 & 24 & 110 & 220 Volt (entire 220V system renewed in 2014) |
| Generator | wet exhaust Vetus (2008) |
| Running hours generator | 340 |
| Start battery | 1 x AGM Deep Cycle (2022) |



GULFSTAR 60 MKII

| | |
|--------------------------------|---|
| Service battery | 4 x 200 Ah Gel battery (2010) & 4 x 200 Ah AGM (2024) |
| Navigation Battery | yes |
| Bowthruster battery | 2 x 200 Ah AGM Deep Cycle (2023) |
| Battery monitor | Victron BMV 501 Battery Monitor |
| Battery charger | 1 x Victron Centaur 200 A & 1 x Vetus 80 A (engine battery) & 1 x Victron (bowthruster batteries) & 1 x Victron Skylla TG 24V 50 A. |
| Inverter | 1 x Victron Phoenix 3.000 W |
| Solar panel | 800 Watt Burger Meyer (double reflection - 2023) with Victron Solar MPTT 100/50 (2023). |
| Diode battery combiners | (2008) |
| Shorepower | with cable Electric rolling up |
| Watermaker | Aqua Whisper Sea Recovery System 250L/H (2008). To be serviced |
| Extra info | The engine room access is through the portside walkthrough. She has the nice little Gulfstar door with a circular porthole. Inside there is plenty of room for sitting down and crawling around. |
| Extra info | The engine has been serviced annually and had a large service in 2022. Propeller shaft bearing renewed in 2022. Separ fuel filter with water separator. Racor fuel filters. In 2008 the engine room was completely emptied and everything was renewed & new installed, including new sound isolation. |
| Extra info | WaterCounter Water Management System WC1 (2011). |

NAVIGATION

| | |
|------------------------------|---|
| Compass | Whitlock |
| Electric compass | Furuno THD Satellite Compass SC-50 (3 Boxes - 2009) |
| Multi control display | Raymarine ST60+ Graphic (2009) |
| Depth sounder/log | Raymarine ST60+ Tridata (2009) |
| Windset | Raymarine ST60+ WInd (2009) |
| Repeater | Raymarine ST60+ (2009) |
| VHF | 1x Raymarine (2009), 1x Skanti 1000 P DSC (2009), 1x Sailor C4951WP (2009). |



| | |
|---------------------------------|---|
| VHF handheld | 1 x Simrad TC 50 GMDSS (2008) |
| Autopilot | Raymarine ST6002 (2009) & 2nd display at chart table |
| Rudder angle indicator | Raymarine ST60+ Rudder (2009) |
| Radar | Furuno Navnet Radar Antenna mounted on mast (2014) and 1x Furuno Marine Radar 1715 on a half cardanic bracket on the arch on the stern |
| GPS | Furuno GPS Navigator (2009) & Raymarine (2009) |
| Navtex | JRC NCR-333 Navtex Receiver |
| Personal computer | Emergency computer for emergency power |
| PC connection | yes |
| Wifi antenna | D-Link |
| Electronic chart(s) | 2014 |
| AIS transceiver | Furuno Universal AIS FA-150 |
| Radio receiver | JRC NCT-196N DSC NBDP Modem (2009) |
| Transmitter | JRC JSB-196 GM Radiotelephone (2009) |
| EPIRB | MacMurdo Smartfind E5/G5 - 406 Mhz - Class 2 |
| Personal MOB transmitter | 2 x & 1 x MacMurdo S4 Rescue Satt Transponder (need new battery) |
| Camera | Axis P12 Network Camera Series (2014) : On the bow, on the stern, 2 x in the mast on spreader (with very good zoom), in the saloon/chart table, at the bow thruster, in the engine room, under water at the propeller & propellershaft and at the propellershaft (inside). At this moment, the camera's are not in use and all cable-ends are disconnected from the computer unit of the camera system. |
| Navigation lights | LED |
| Searchlight | On the arch on the stern |
| Loudhailer | Sailor SC4150 Iridium & Standard Horizon Loud Hailer VLH-3000 |
| Extra info | Tsunamis Navigator & Dell Screen at navigation table |
| Extra info | Sextant |

EQUIPMENT

| | |
|------------------|------|
| Sprayhood | Blue |
|------------------|------|



| | |
|----------------------------|---|
| Cockpit cover | Blue |
| Bimini | Cockpit cover can be used as a bimini (panels around removed) |
| Sun awning | Over the complete boat (2014, as new, only used a few times) |
| Cockpit cushions | Blue with a extra & new spare set of covers |
| Cockpit table | Teak (foldable and mounted on front of pedestal) |
| Boarding ladder | stainless steel With teak - Hanging on port side |
| Gangway | Hydraulic Besenzoni (in GRP with 2 stentions) |
| Deck shower | On the aft deck |
| Anchor | Bruce 30 Kg |
| Anchor chain | 120 m 12 mm (2014) |
| Windlass | electrical Controlled on the bow and in the cockpit |
| Capstan | On the windlass |
| Deck wash | 2 x (functioning unknown) |
| Outboard support | yes |
| Davits | stainless steel Foldable bracket |
| Davits controls | manual |
| Deck crane | manual On the stern |
| Sea railing | wire Double wired |
| Grab rail (superstructure) | teak |
| Railing side opening gates | On both sides |
| Pushpit | Stainless steel |
| Pulpit | Stainless steel |
| Lifejackets | 2 x |
| Safety harness | 2 x |
| Lifebuoy | 2 x Orange round buoy |
| Safety lines on deck | (2022, but never used - new) |
| Rope cutter | (2021) |
| Horn | air pressure 2 x |
| Radar reflector | (2014) |
| Fenders | yes |
| Mooring lines | yes |
| Spare parts | yes |



| | |
|-----------------------------|---|
| TV | Samsung Smart TV (2016) |
| TracVision ball | TracVision |
| Radio-cd player | 1 x JVC & 1 x Alpine |
| Surround Sound System | (2022) |
| Sub-woofer | (2022) |
| Cockpit speakers | (2008) |
| Speakers in salon | Pioneer (2008) |
| Speakers in cabin | 2 x Pioneer in every cabin |
| Clock - barometer | In every cabin is a clock |
| Fire extinguisher | yes |
| Latest extinguisher survey | Need to be checked / renewed |
| Extinguisher in engine room | Need to be checked / renewed |
| Extra info | LED underwater lighting (New in 2023) |
| Extra info | Blue LED lighting behind the name on the transom |
| Extra info | Stainless steel Magma BBQ (with all accessories) on aft port side pulpit. |

RIGGING

| | |
|-------------------|--|
| Rigging | sloop-cutter |
| Standing rigging | Dyform (2014) |
| Brand mast | Formula Masts (2014) |
| Material mast | aluminium coated Coated Cloud White Alexseal (2014) |
| Spreaders | 2 x Set - White coated (2014) |
| Keel stepped mast | yes |
| Mainsail | Climent Furling Laminated Furling Mainsail (2014 - adequate) |
| Stoway mast | Hydraulic (2014) |
| Cutterstay | Removable, with a tentioner (2014) |
| Jib | 1 x Climent Cutter Jib (2014-unused) & 1 x Citter Jib (old) |
| Genoa | Climent Furling Laminated Genoa (moderate condition) |
| Genoa furler | Harken - Hydraulic (2014) |
| Gennaker | Climent (2014) with loose Facnor Furler (2014 - never used, new) |



| | |
|------------------------------|--|
| Reefing System | main in-mast furling Hydraulic (2014) |
| Boomvang | hydraulic Navtec (2014) |
| Primary sheet winch | 1 x Barent 27 ST (mainsail sheet) |
| Secondary sheet winch | 2 x Barent 28 ST |
| Genoa sheetwinches | 2 x Barent 36 ST electric |
| Halyard winches | 2 x Barent 25 |
| Spi-pole | carbon Cloud White Alexseal coated (2014), the end head is missing |
| Extra info | After renewing of rigging (2014), yacht wasn't used till 2022 |



GULFSTAR 60 MKII



GULFSTAR 60 MKII



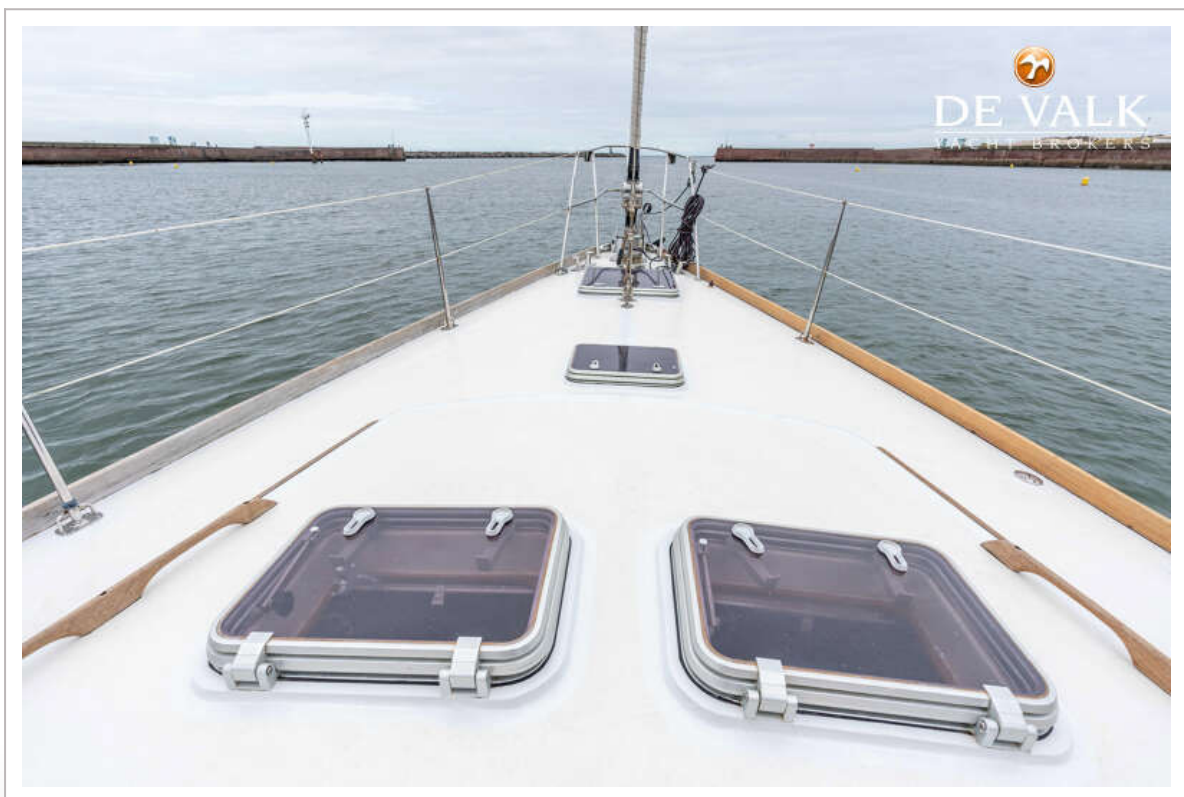
GULFSTAR 60 MKII



GULFSTAR 60 MKII



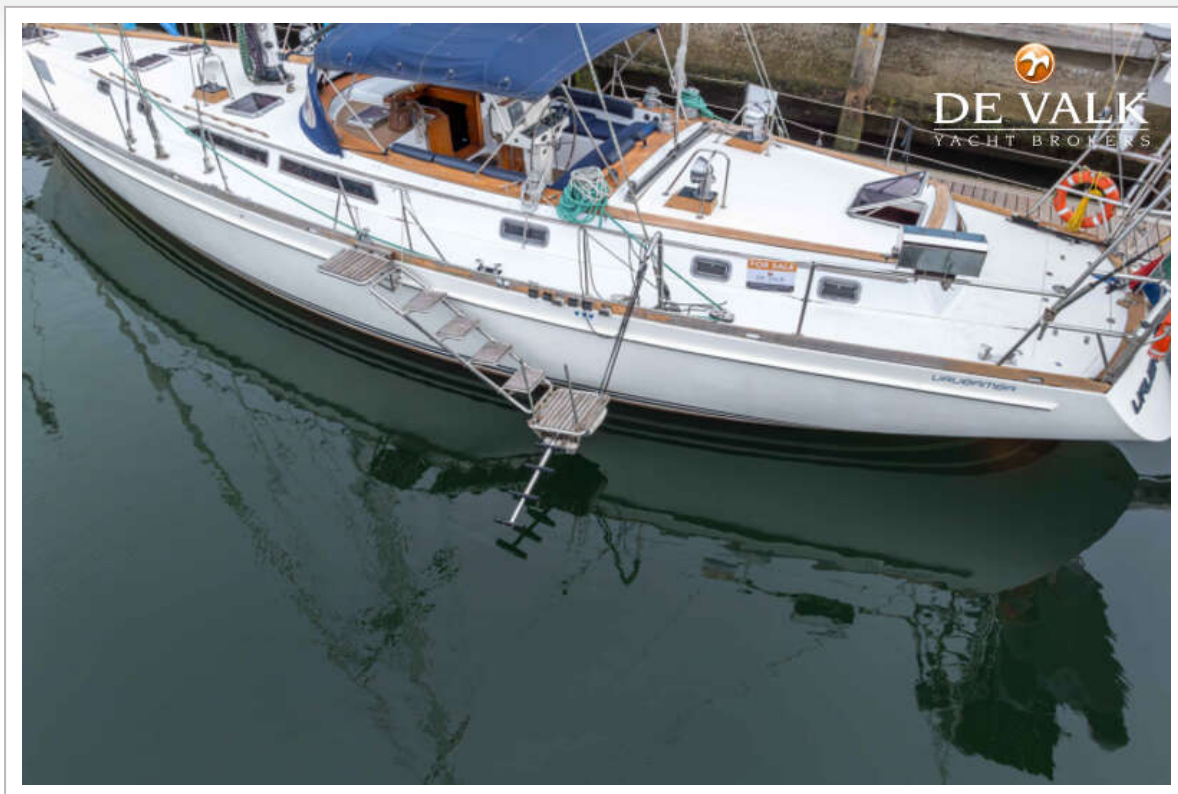
GULFSTAR 60 MKII



GULFSTAR 60 MKII



GULFSTAR 60 MKII



GULFSTAR 60 MKII



GULFSTAR 60 MKII



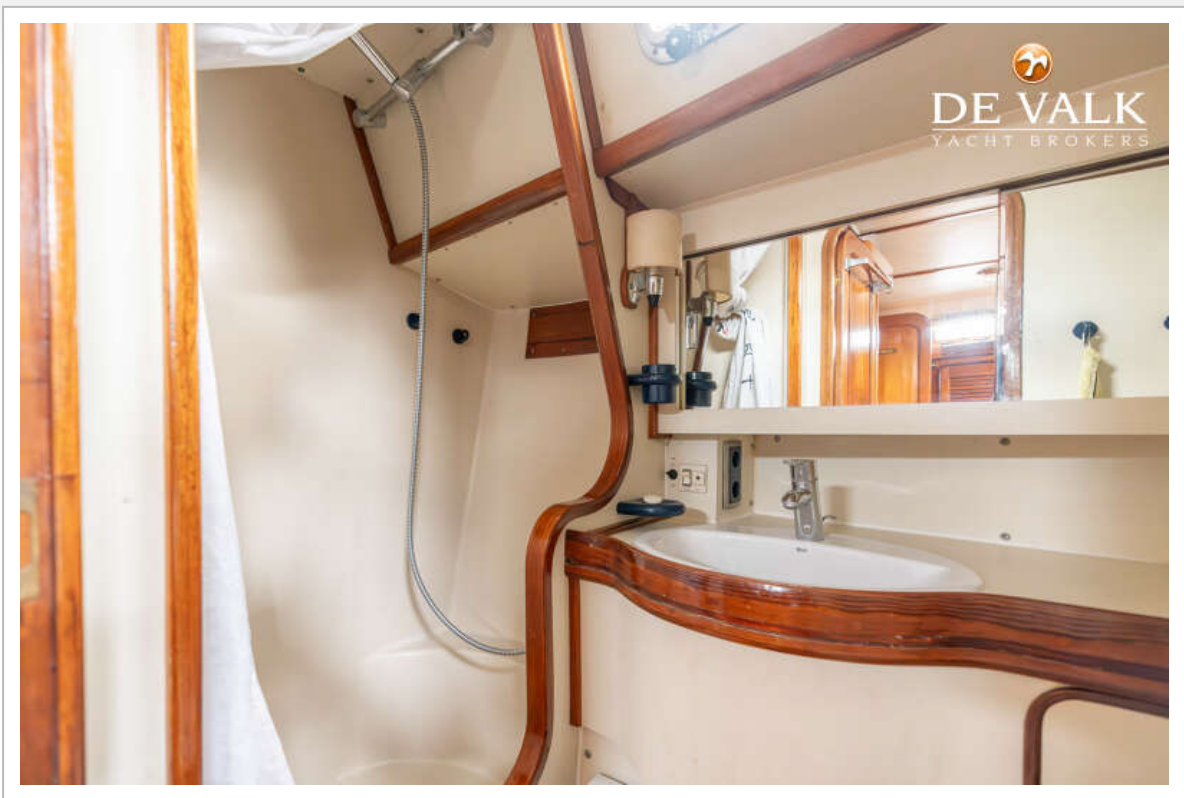
GULFSTAR 60 MKII



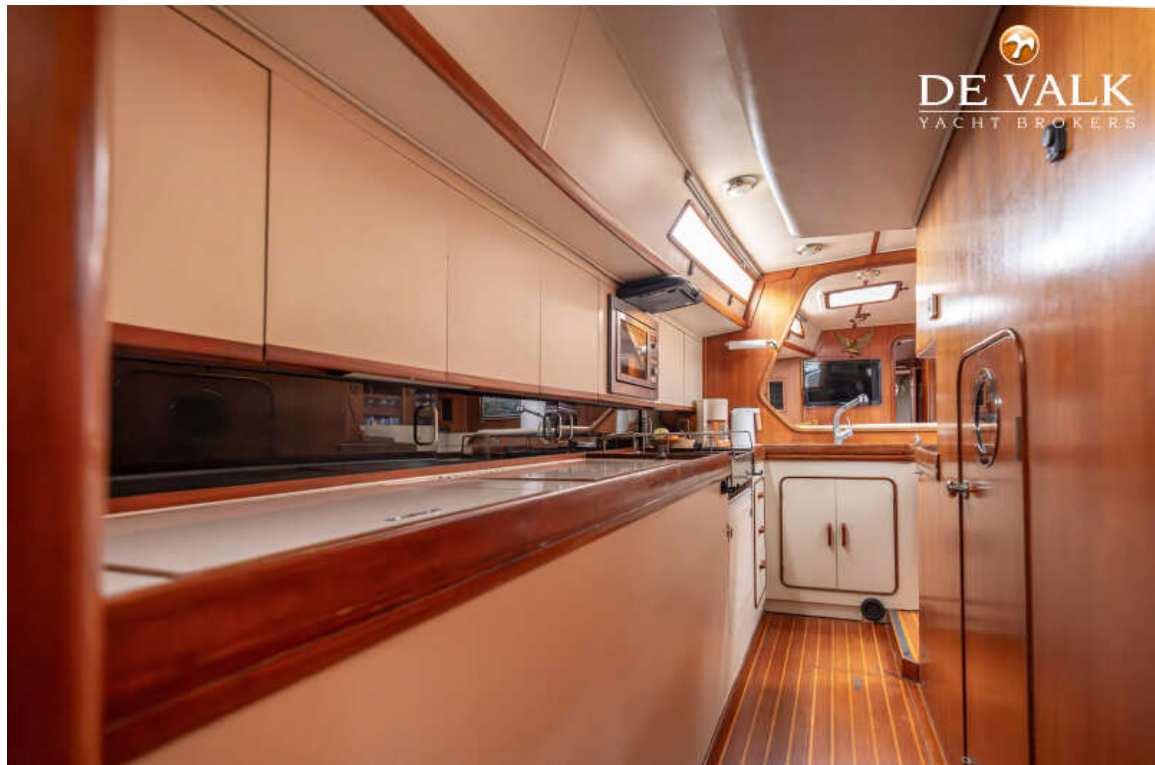
GULFSTAR 60 MKII



GULFSTAR 60 MKII



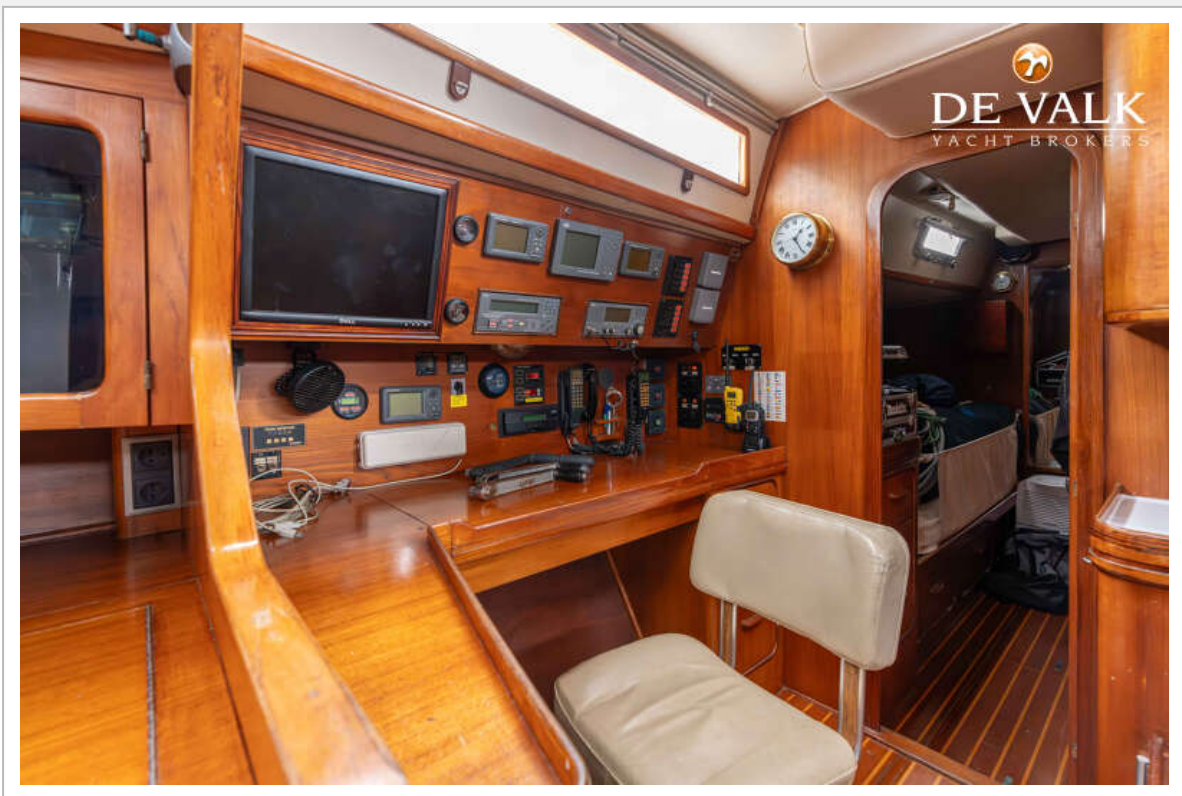
GULFSTAR 60 MKII



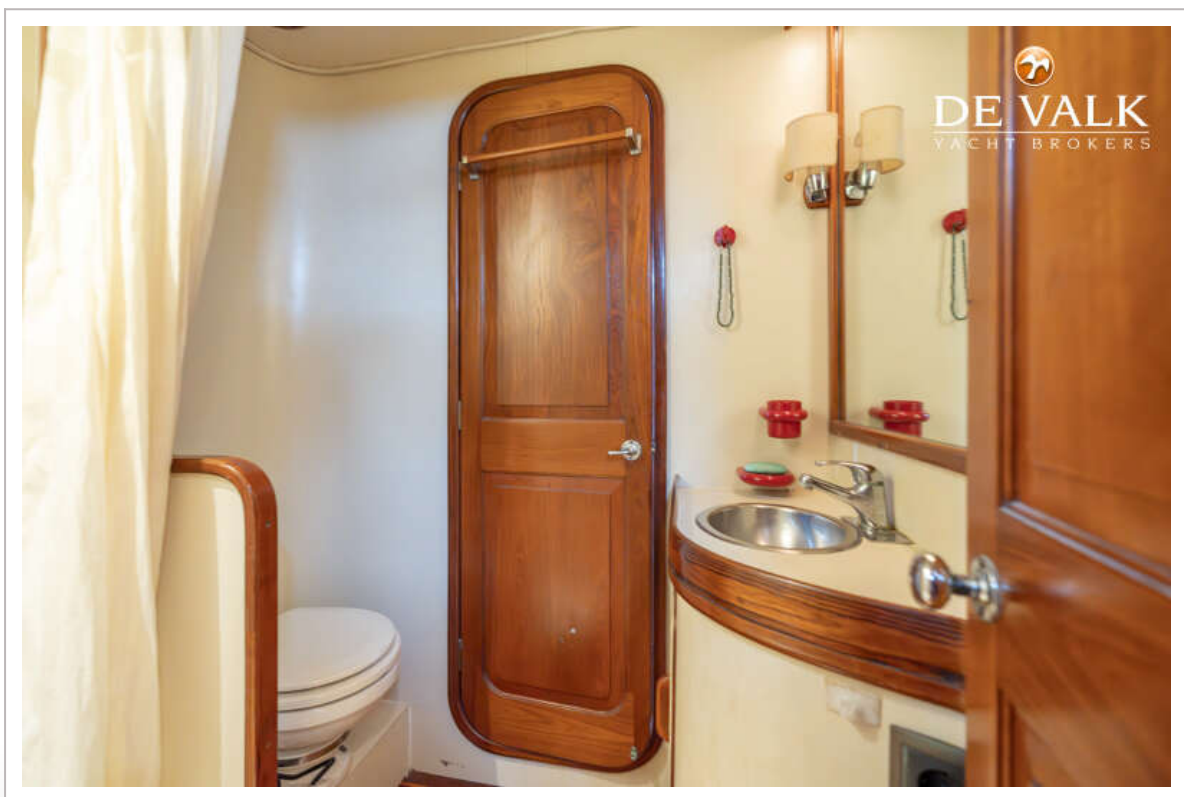
GULFSTAR 60 MKII



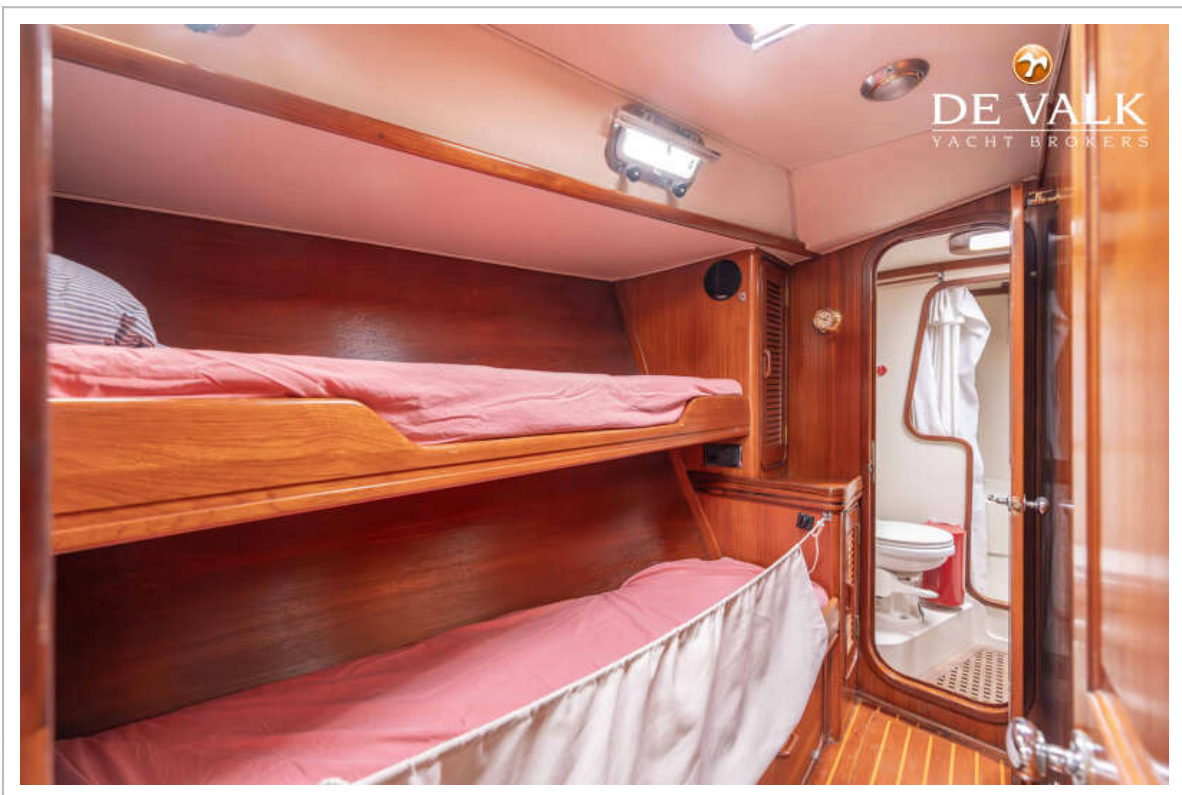
GULFSTAR 60 MKII



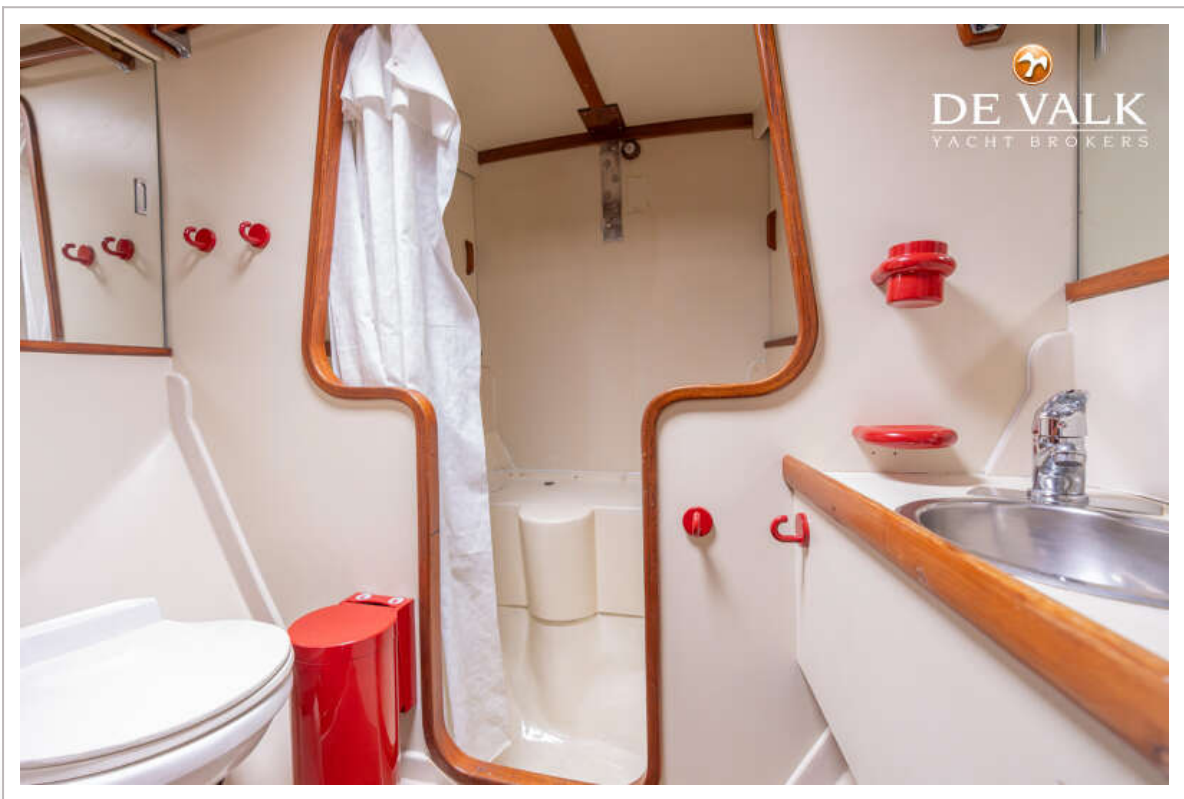
GULFSTAR 60 MKII



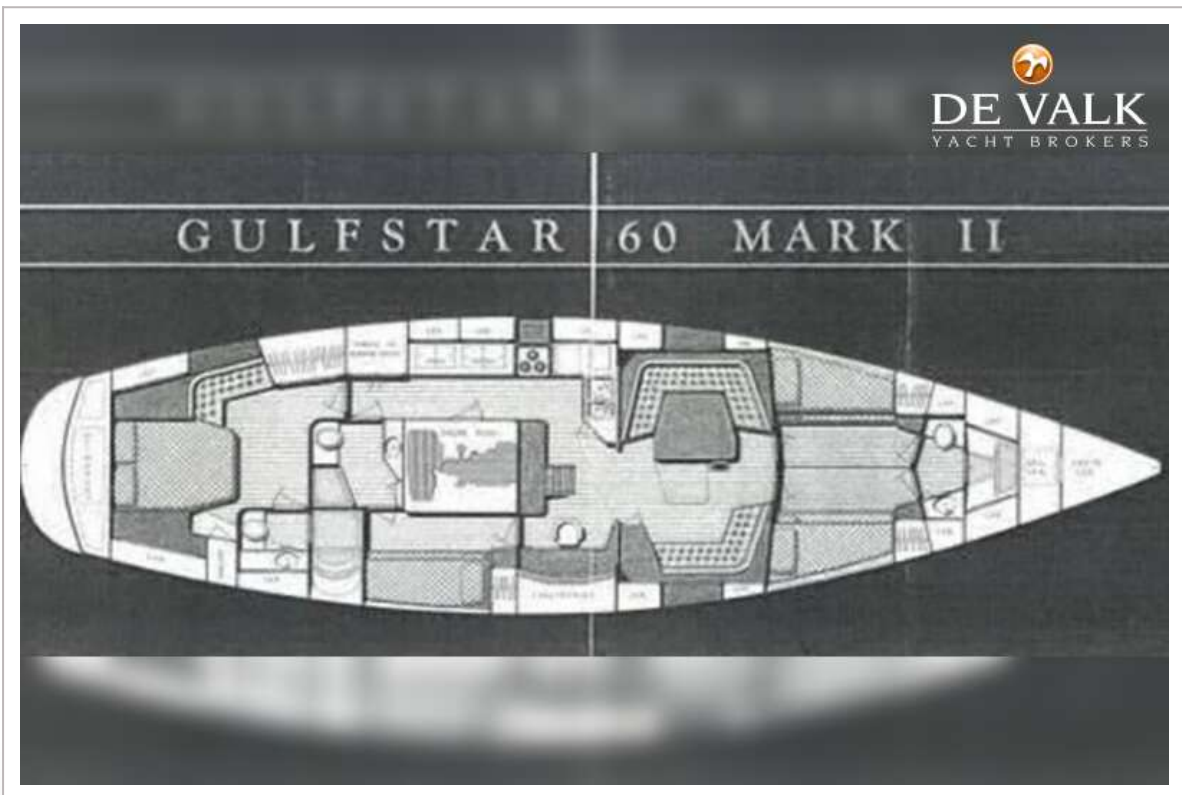
GULFSTAR 60 MKII



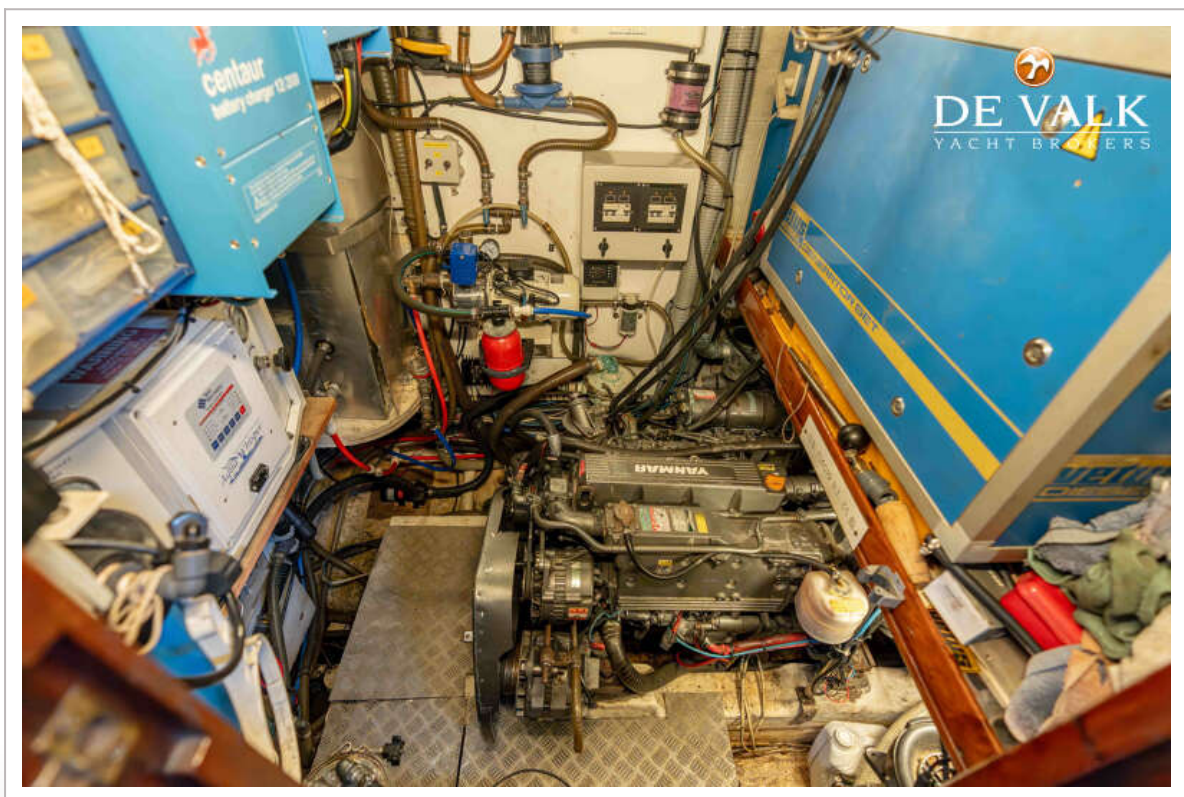
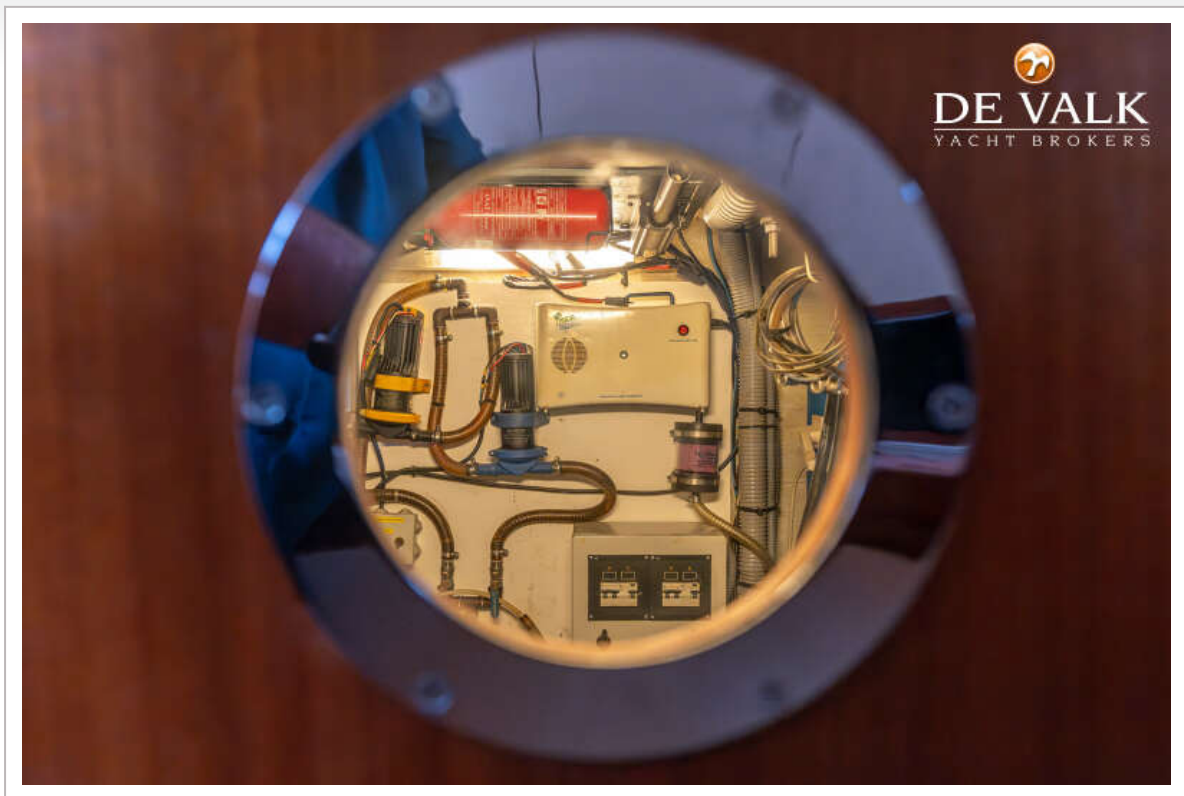
GULFSTAR 60 MKII



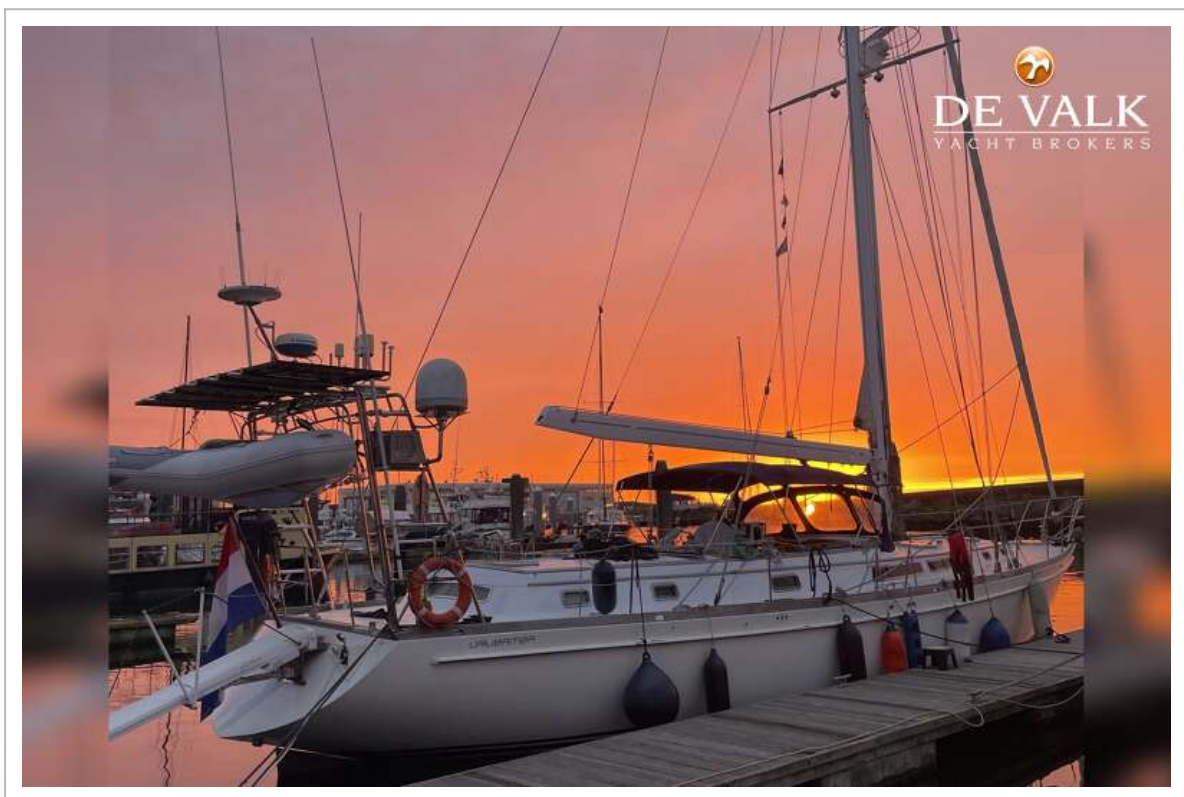
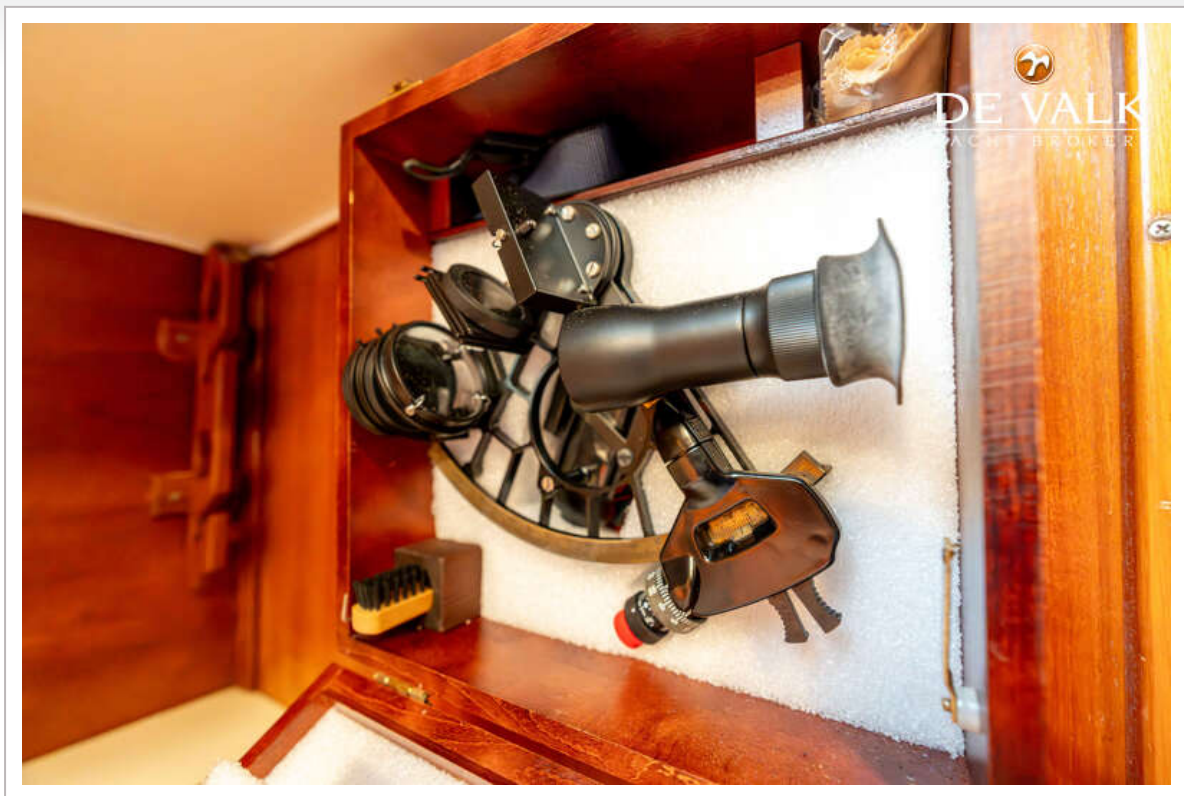
GULFSTAR 60 MKII



GULFSTAR 60 MKII



GULFSTAR 60 MKII



GULFSTAR 60 MKII

