



DE VALK
YACHT BROKERS



LINSKENS SUPERCUISEER 48



DE VALK
YACHT BROKERS

LINSKENS SUPERCUISEYR 48

BROKER'S COMMENTS

Linskens SuperCruiser 48 a Dutch-built steel motor yacht of 14 metres 40. A wonderfully comfortable boat with enormous interior space, partly due to the generous round seating in the front of the motor yacht. Two cabins, 1 with French bed and 1 with bunk beds. March 2024, the Linskens was completely repainted (hull and superstructure). A motor yacht in great condition and equipped with basically everything you need for a long stay on board. The Linskens is located in our covered sales marina in Sneek, where you are welcome seven days a week.

Pieter Bosma

SPECIFICATIONS

Dimensions	14.40 x 4.45 x 1.20 (m)	Builder	Linskens Shipyard te Wanssum
Built	2008	Cabins	2
Material	Steel	Berths	4
Engine(s)	1 x Iveco N67 MNA M15.01 diesel	Hp/Kw	150.00 (hp), 110.40 (kw)
Asking price	€ 349.000 (VAT Paid)	Lying	contact Sneek

CONTACT

Sales office	De Valk Sneek	Telephone	+31 515 42 80 30
Address	Zwolsmanweg 7 8606 KC Sneek The Netherlands	E-mail	sneek@devalk.nl

DISCLAIMER

These particulars are given in good faith as supplied but cannot be guaranteed.



LINSKENS SUPERCRUISER 48

GENERAL

Model	LINSKENS SUPERCRUISER 48
Type	motor yacht
LOA (m)	14,40
Beam (m)	4,45
Draft (m)	1,20
Air draft min (m)	3,50
Headroom (m)	2,00
Year built	2008
Builder	Linskens Shipyard te Wanssum
Country	The Netherlands
Designer	Vripack Sneek
Displacement (t)	23
CE norm	B
Hull material	steel
Hull colour	beige
Hull thickness (mm)	5
Hull shape	multi hard chine
Superstructure material	steel
Superstructure (mm)	4
Deck plate thickness (mm)	4
Rubbing strake	stainless steel
Deck material	steel
Deck finish	synthetic teak
Superstructure deck finish	paint
Cockpit deck finish	synthetic teak
Antifouling (year)	2024 (march)
Dorades	yes
Window frame	aluminium
Window material	glass Hora Dubrit
Deckhatch	yes



LINSKENS SUPERCRUISER 48

Portholes	yes
Insulation	glasswool
Radar arch	collapsible Aluminium, with convertible top
Fuel tank (litre)	steel 1300
Level indicator (fuel tank)	Vetus
Freshwater tank (litre)	stainless steel 750
Level indicator (freshwater)	Vetus
Blackwater tank (litre)	stainless steel 400
Level indicator (blackwater)	Vetus
Blackwater tank extraction	deck extraction + pump
Wheel steering	hydraulic
Outside helm position	hydraulic
More info on paintwork	Superstructure and hull new painted in march 2024

ACCOMMODATION

Cabins	2
Berths	4
Interior	mahogany
Floor	carpet
Aft deck	yes
Saloon	yes
Headroom saloon (m)	2,0
Heating	central heating Maritime Booster
Aft Cabin	yes
Opening door to aft deck	yes
Galley	yes
Countertop	corian 2019
Sink	stainless steel
Cooker	induction AEG 4-pits
Extractor	yes
Microwave/oven combi	Samsung



LINSKENS SUPERCRUISER 48

Fridge	1x Dometic & 1x Siemens with freezer
Hot water system	220V or central heating
Owners cabin	French bed
Bed length (m)	2,10
Wardrobe	hanging/drawers/shelves
Bathroom	shared
Toilet	shared
Toilet system	electric Tecma
Wash basin	in the bathroom
Shower	shared
Guest cabin 1	bunk bed
Bed length (m)	2,10
Bathroom	shared
Toilet	shared
Shower	shared

MACHINERY

No of engines	1
Make	Iveco
Type	N67 MNA M15.01
HP	150
kW	110.40
Fuel	diesel
Year installed	2007
Maximum speed (kn)	8
Cruising speed (kn)	7
Consumption (l/hr)	5,5
Engine hours	1080
Engine cooling system	seawater
Drive	shaft
Shaft seal	yes



LINSKENS SUPERCRUISER 48

Engine controls	electrical
Gearbox	Twin Disc TM170 2.5
Bowthruster	electric Vetus 125 Kgf
Sternthruster	electric Vetus 125 Kgf
Exhaust	watercooled
Thrust bearing	yes
Propeller type	fixed
Propeller blades	4
Propeller shaft material	stainless steel 45mm
Shaft lubrication	water
Manual bilge pump	yes
Electric bilge pump	yes
Electrical installation	12V /24V /230V
Generator	silent separator Vetus GLS 14 SK / 14 KVA
Running hours generator	Ca 120
Batteries	10 x
Start battery	2x Cyrix
Service battery	4x Victron AGM 12V / 220Ah
Bowthruster battery	2x Optima Yellow
Sternthruster battery	2x Optima Yellow
Battery monitor	Victron Energy BMV-501
Battery charger/inverter	Victron Energy Multiplus 24/3000/70
Shorepower	with cable
Extra info	Micro Commander system.

NAVIGATION

Electric compass	Raymarine C80
Log	Raymarine C80
VHF	Raymarine 240VHF
Rudder angle indicator	Raymarine ST60+
Plotter/GPS	Raymarine C80



Navigation lights	yes
-------------------	-----

EQUIPMENT

Fixed windscreen	yes
Sprayhood	Convertible top (2021)
Bimini	yes
Cockpit cushions	yes
Cockpit chairs	yes
Bathing platform	yes
Boarding ladder	stainless steel
Transom door	2x
Anchor	yes
Anchor chain	RVS ca. 20 mtr
Anchor 2	RVS 15kg
Windlass	electrical Lofrans Project 1000
Deck wash	yes
Sea railing	yes
Grab rail (superstructure)	stainless steel
Railing side opening gates	yes
Wiper	3x Exalto
Horn	electric
Fenders	yes
Mooring lines	yes
TV	Panasonic flatscreen on lift
TV receiver	DigiTenne
Radio-cd player	JVC- Radio Data System
Cockpit speakers	yes
Speakers in salon	yes
Fire extinguisher	yes



LINSKENS SUPERCUISE 48



LINSKENS SUPERCUISEUR 48



LINSKENS SUPERCUISE 48



LINSKENS SUPERCUISE 48



LINSKENS SUPERCUISE 48



LINSKENS SUPERCRUISER 48



LINSKENS SUPERCUISE 48



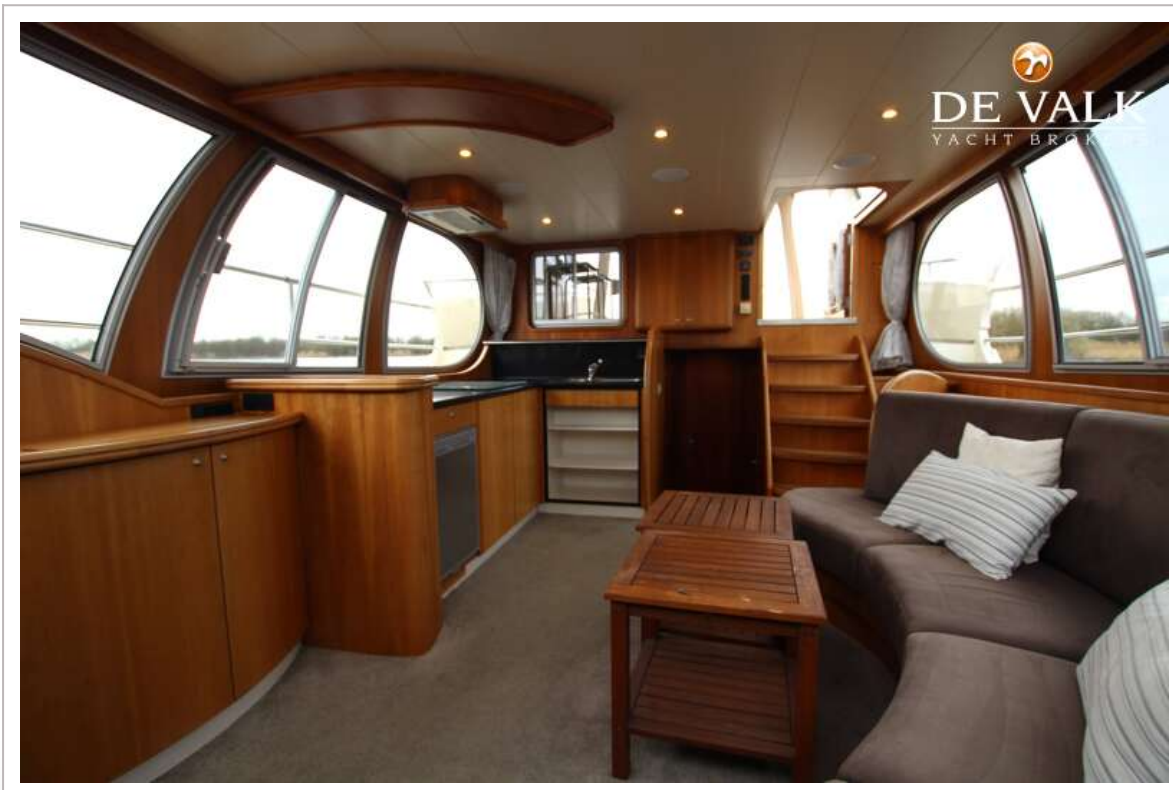
LINSKENS SUPERCRUISER 48



LINSKENS SUPERCUISE 48



LINSKENS SUPERCUISE 48



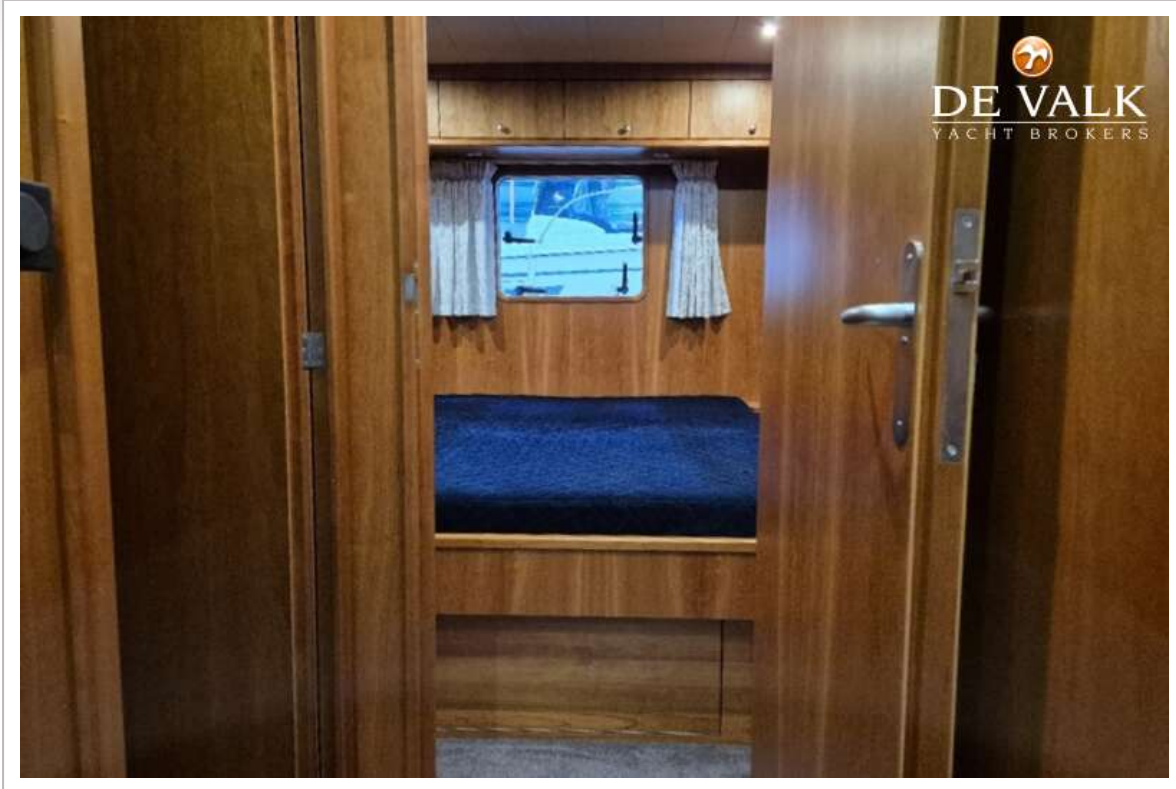
LINSKENS SUPERCUISE 48



LINSKENS SUPERCUISE 48

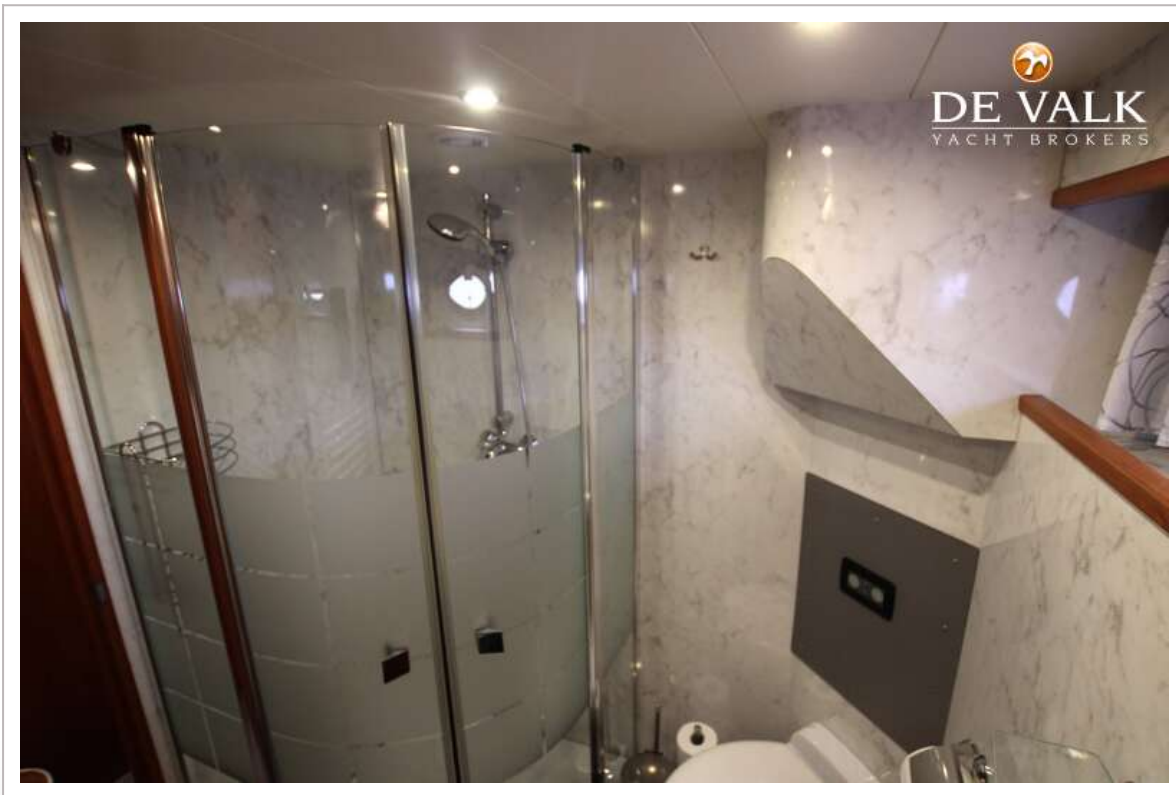
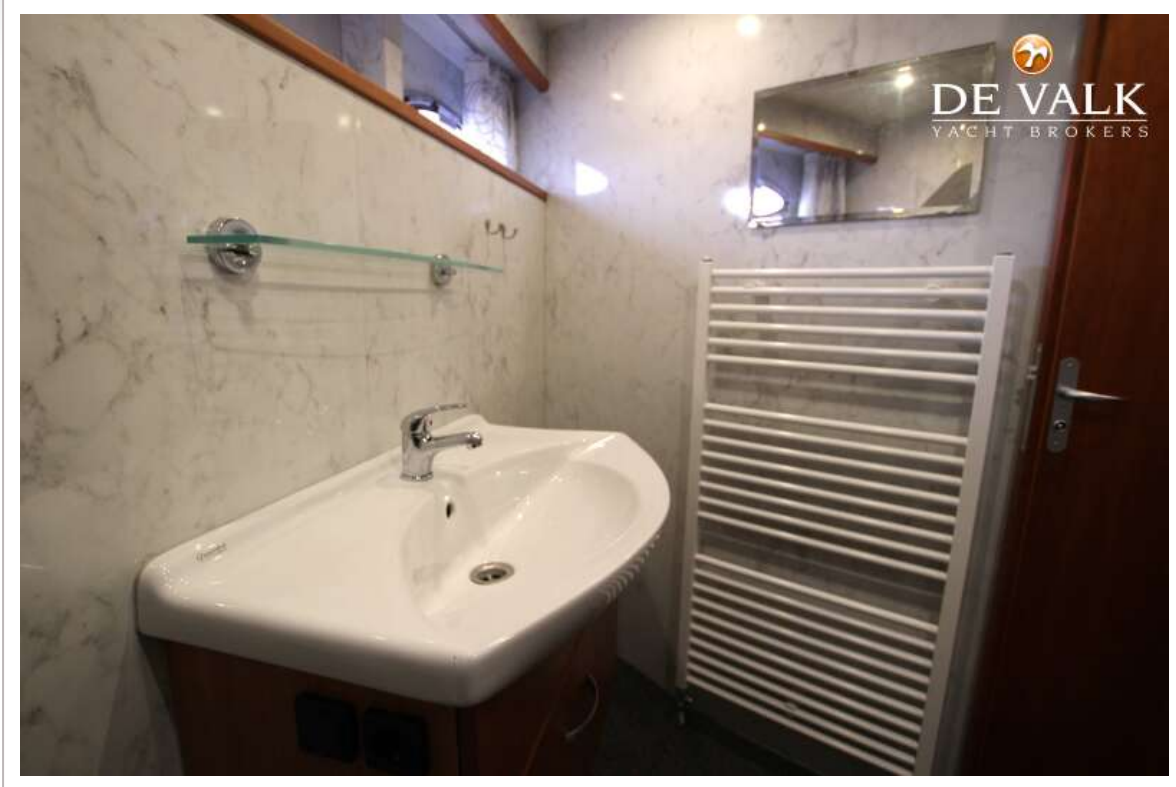


LINSKENS SUPERCUISE 48

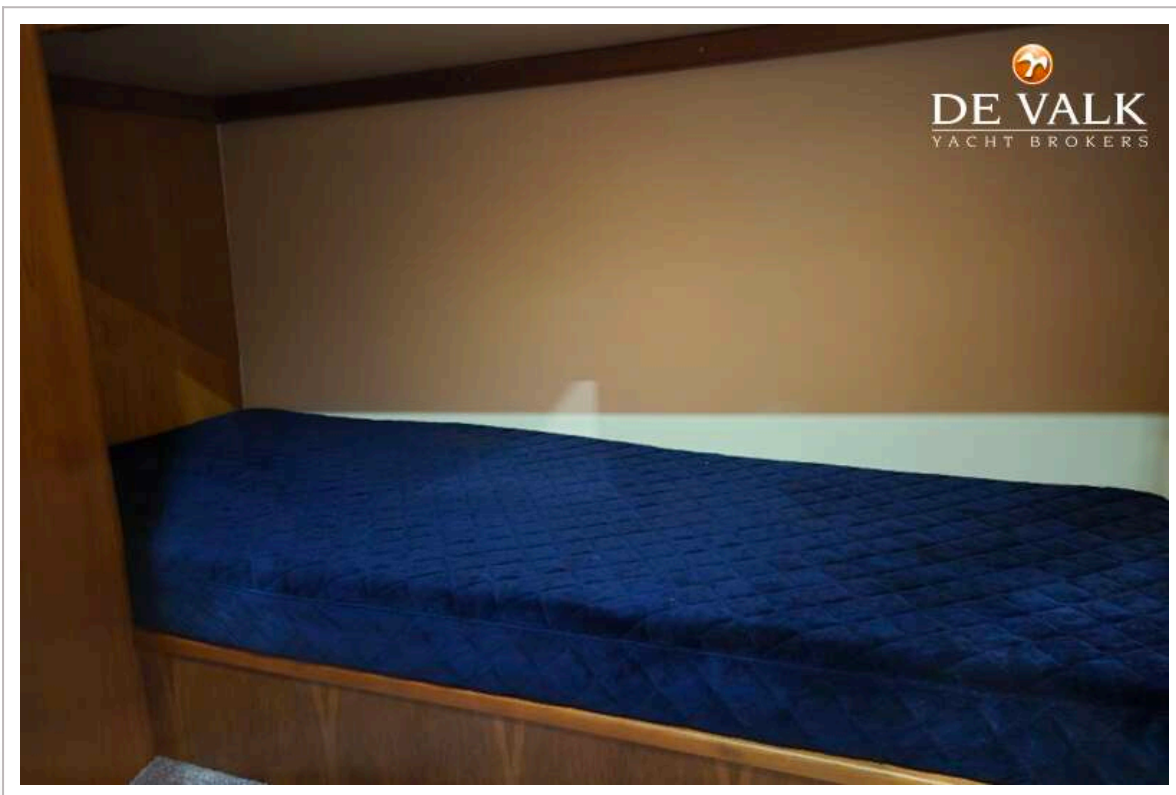


LINSKENS SUPERCUISE 48





LINSKENS SUPERCUISE 48



LINSKENS SUPERCUISEUR 48

