



DE VALK
YACHT BROKERS



NORDKAPP GRAN COUPE 905



DE VALK
YACHT BROKERS

NORDKAPP GRAN COUPE 905

BROKER'S COMMENTS

This 2023 Nordkapp Gran Coupe 905 is a sporty, year-round Norwegian quality boat that stands out. Spacious and smart designed interior. A large forward cabin with separate enclosed toilet. In the main cabin the sofa converts into a good extra bed. Outside a comfortable sun lounge area on the fore and aft deck. The cockpit seats are easily removable for space for other activities. To get to the bow, the passageways are wide and the high freeboard with handles allows everyone to move safely on the boat. Please study the full specifications below and contact our office to schedule a visit.

Reinier van der Wolf

SPECIFICATIONS

Dimensions	9.12 x 2.98 x 0.90 (m)	Builder	Nordkapp Boats AS
Built	2023	Cabins	1
Material	GRP	Berths	
Engine(s)	2 x Mercury Verado F250DS XL V8 petrol	Hp/Kw	2 x 500 (hp), 368 (kw)
Asking price	€ 185.000 (VAT Not paid)	Lying	elsewhere / not at sales office

CONTACT

Sales office	De Valk Monnickendam	Telephone	+31 299 65 63 50
Address	Hoogedijk 6 1145 PM Katwoude The Netherlands	E-mail	monnickendam@devalk.nl

DISCLAIMER

These particulars are given in good faith as supplied but cannot be guaranteed.



NORDKAPP GRAN COUPE 905

GENERAL

Model	NORDKAPP GRAN COUPE 905
Type	motor yacht
LOA (m)	9,12
Beam (m)	2,98
Draft (m)	0,90
Air draft (m)	2,70
Year built	2023
Launched	04-2023
Builder	Nordkapp Boats AS
Country	Norway
Designer	Espen Thorup
Displacement (t)	2,25
CE norm	C
Hull material	GRP
Hull colour	white
Hull shape	deep-V
Superstructure material	GRP
Rubbing strake	rubber
Deck material	GRP
Deck finish	synthetic teak
Superstructure deck finish	non-skid moulded in
Cockpit deck finish	synthetic teak - EVA SmartDeck
Antifouling (year)	2023
Deckhatch	1x
Fuel tank (litre)	GRP Ca. 309 L.
Freshwater tank (litre)	GRP Ca. 48 L.
Blackwater tank extraction	deck extraction + pump Ca. 48 L.
Wheel steering	hydraulic
Inside helm position	yes
More info on hull	Deep Vee hull with self-draining and outflows mechanism



ACCOMMODATION

Cabins	1
Aft deck	with 2 sofa's. The aft sofa backrest is reversible
Pilot house/deck saloon	yes
Saloon	with front-, side and rear curtains
Sliding roof	electric
Heating	diesel ducted hot air - Webasto
Navigation center	at helm position
Dinette to convert into berth	yes
Sliding door to aft deck	yes
Galley	at port side, under the passenger seat. A large round sink and one cooking burner that runs on gas. The gas container itself is placed under the bow hatch on the foredeck to ensure safety on board
Sink	stainless steel
Cooker	calor gas
Fridge	is located under the driver's seat. A large 49 liter cooler with two drawers
Water pressure system	electrical
Owners cabin	double bed
Wardrobe	drawers
Bathroom	shared
Toilet	shared
Toilet system	electric
Wash basin	in the bathroom
Extra info	The front cabin is equipped with a wide, comfortable double berth at starboard side. At starboard also a separate toilet room with sink and electric toilet with a holding tank. Inside the cabin a spacious seating area with a table and space for six people. Here you can also convert the aft sofa into a good extra bed

MACHINERY

No of engines	2
----------------------	---



NORDKAPP GRAN COUPE 905

Make	Mercury Verado
Type	F250DS XL V8
HP	500
kW	368
Fuel	petrol
Year installed	2023
Maximum speed (kn)	51
Cruising speed (kn)	31
Drive	outboard
Engine controls	electrical + Mercury JPO System
Bowthruster	electric
Propeller blades	3
Manual bilge pump	yes
Electric bilge pump	yes
Batteries	2x
Battery monitor	yes
Shorepower	with cable

NAVIGATION

Electric compass	yes
Multi control display	yes
Depth sounder	yes
Log	yes
VHF	Garmin VHF 215 I AIS
Plotter/GPS	2 x Garmin 1223 XSV - 12-inch & DownVu (Clearvu) sonar
Electronis chart(s)	yes
Navigation lights	yes

EQUIPMENT

Cockpit cover	/ closure aft deck
Cockpit cushions	to create a sunbed in the cockpit

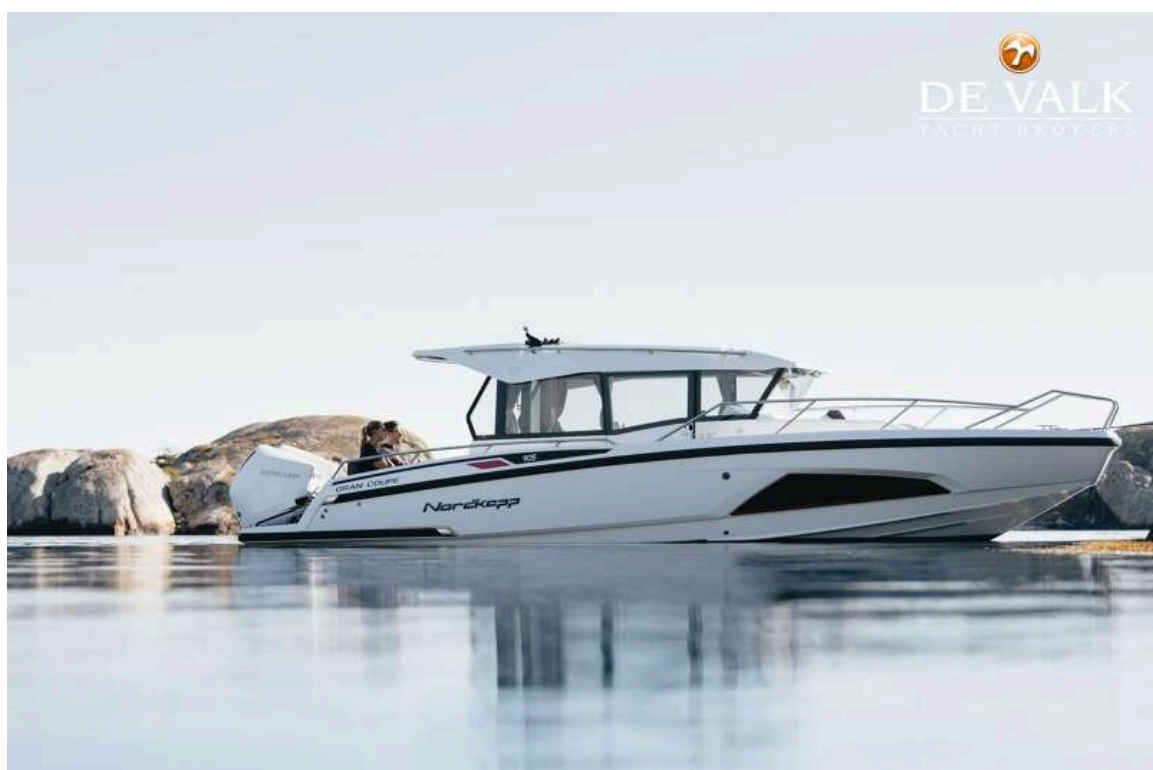


NORDKAPP GRAN COUPE 905

Cockpit table	yes
Cockpit chairs	= double bench seat in cockpit; one facing forwards and the other backwards
Bathing platform	yes
Boarding ladder	stainless steel
Deck shower	yes
Anchor	yes
Anchor chain	yes
Windlass	electrical
Sea railing	stainless steel
Grab rail (superstructure)	stainless steel
Pulpit	stainless steel
Wiper	2x
Fenders	yes
Mooring lines	yes
Radio	Fusion RA 210 Bluetooth stereo combined Fusion XXL Signature soundpackage
Cockpit speakers	2x
Speakers in salon	2x
Extra info	trailer not included



NORDKAPP GRAN COUPE 905



NORDKAPP GRAN COUPE 905



NORDKAPP GRAN COUPE 905



NORDKAPP GRAN COUPE 905



NORDKAPP GRAN COUPE 905



NORDKAPP GRAN COUPE 905



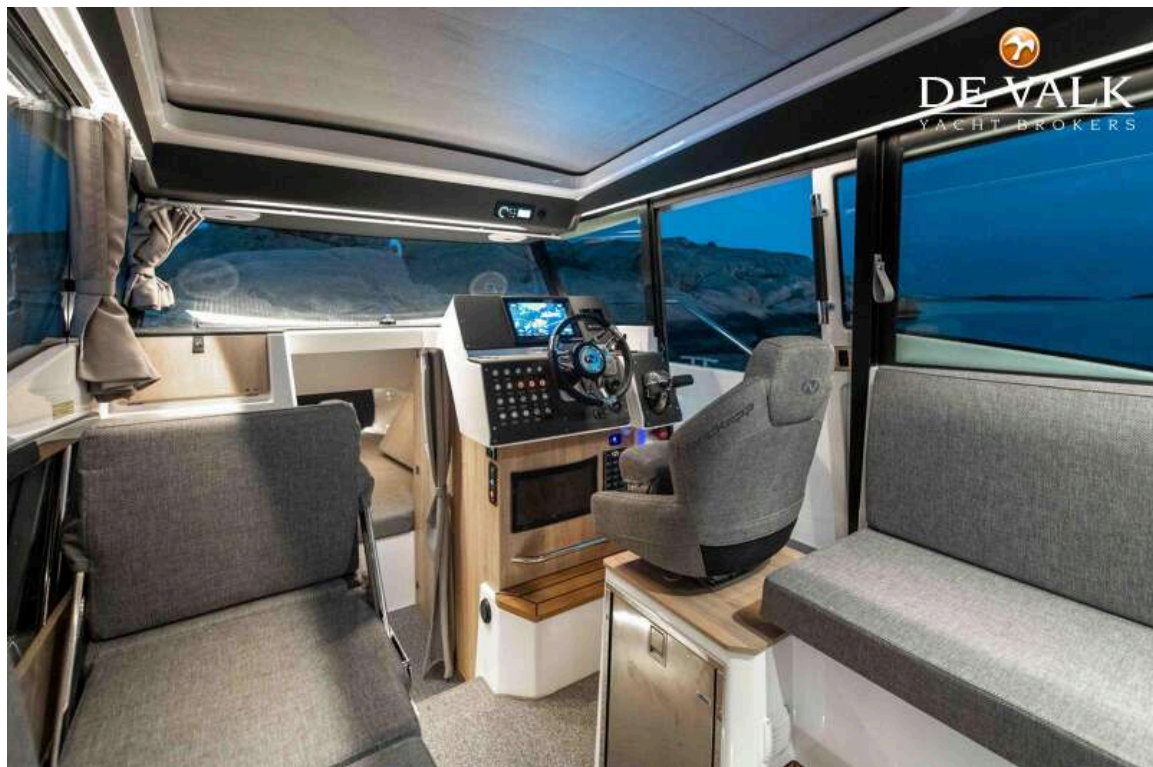
NORDKAPP GRAN COUPE 905



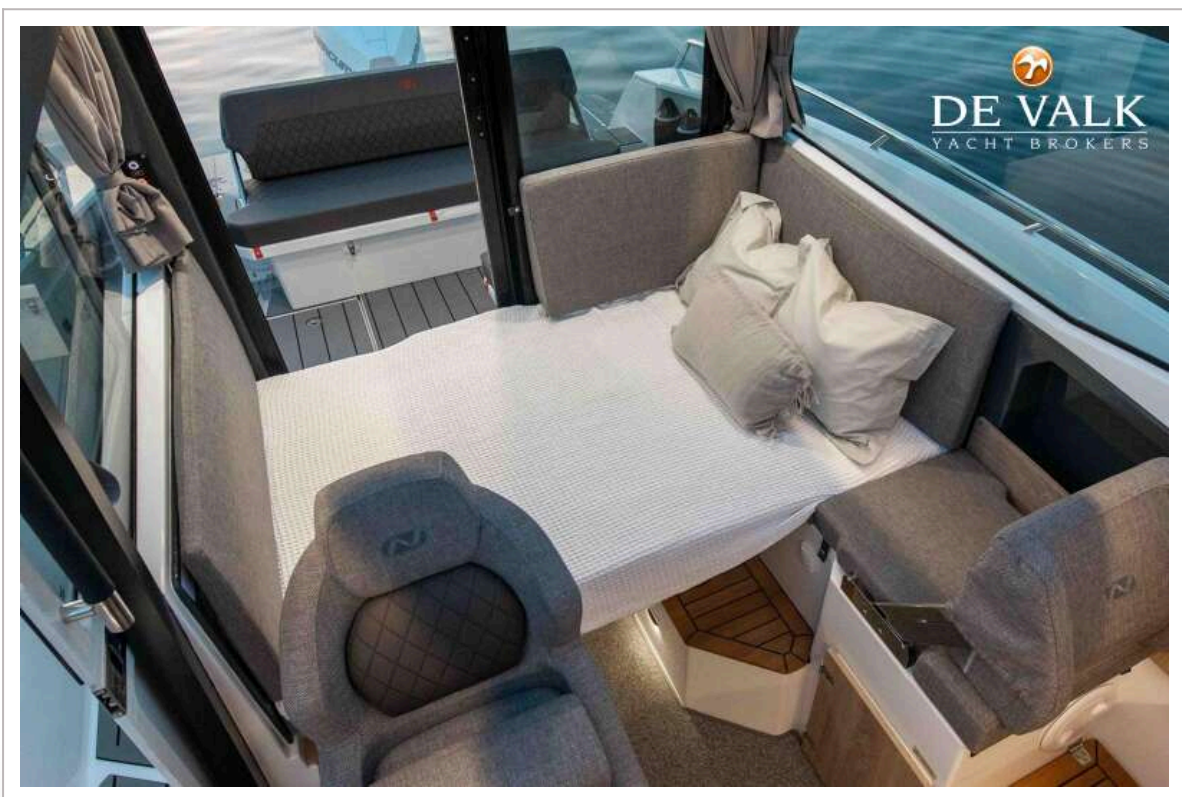
NORDKAPP GRAN COUPE 905



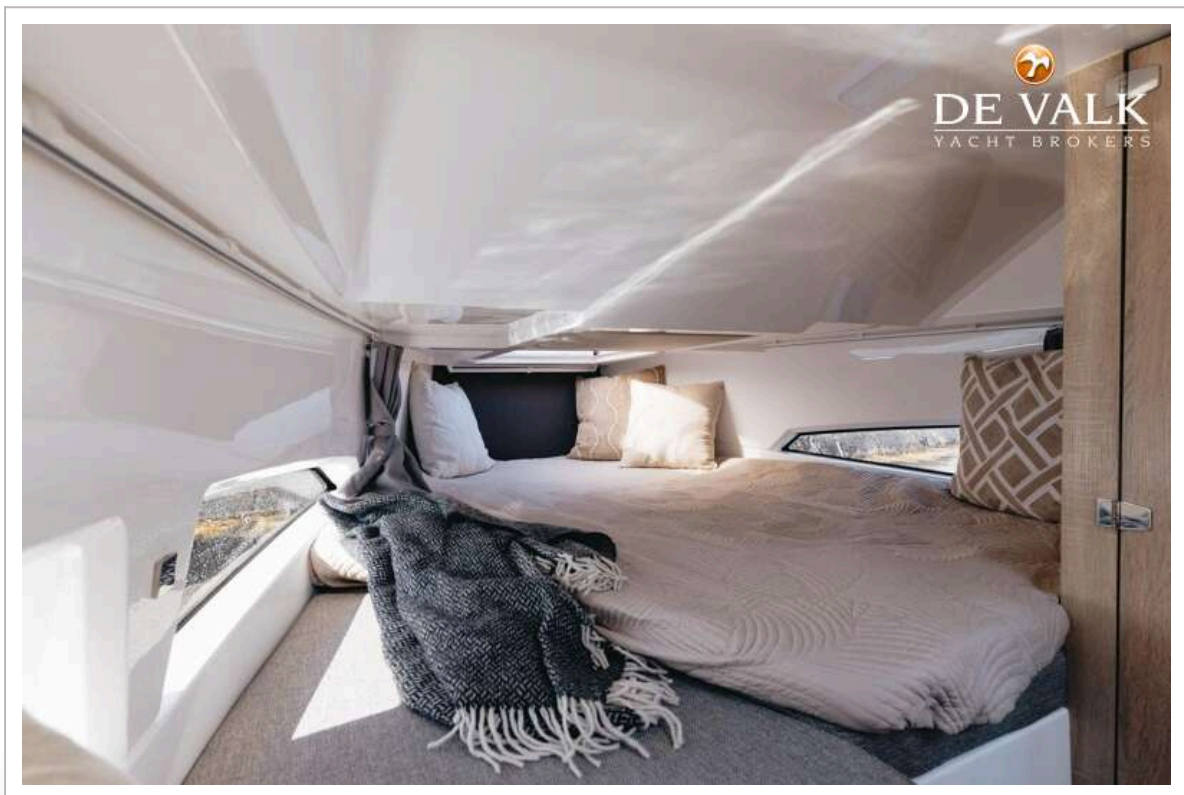
NORDKAPP GRAN COUPE 905



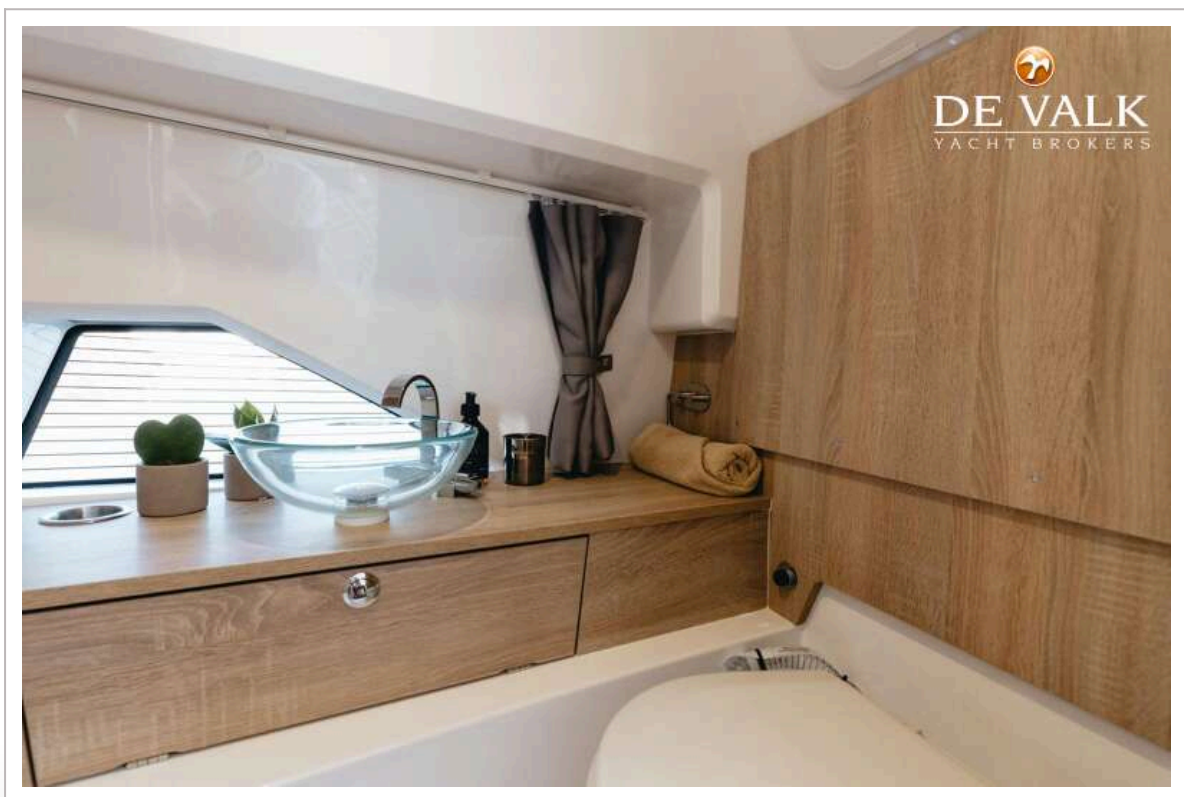
NORDKAPP GRAN COUPE 905



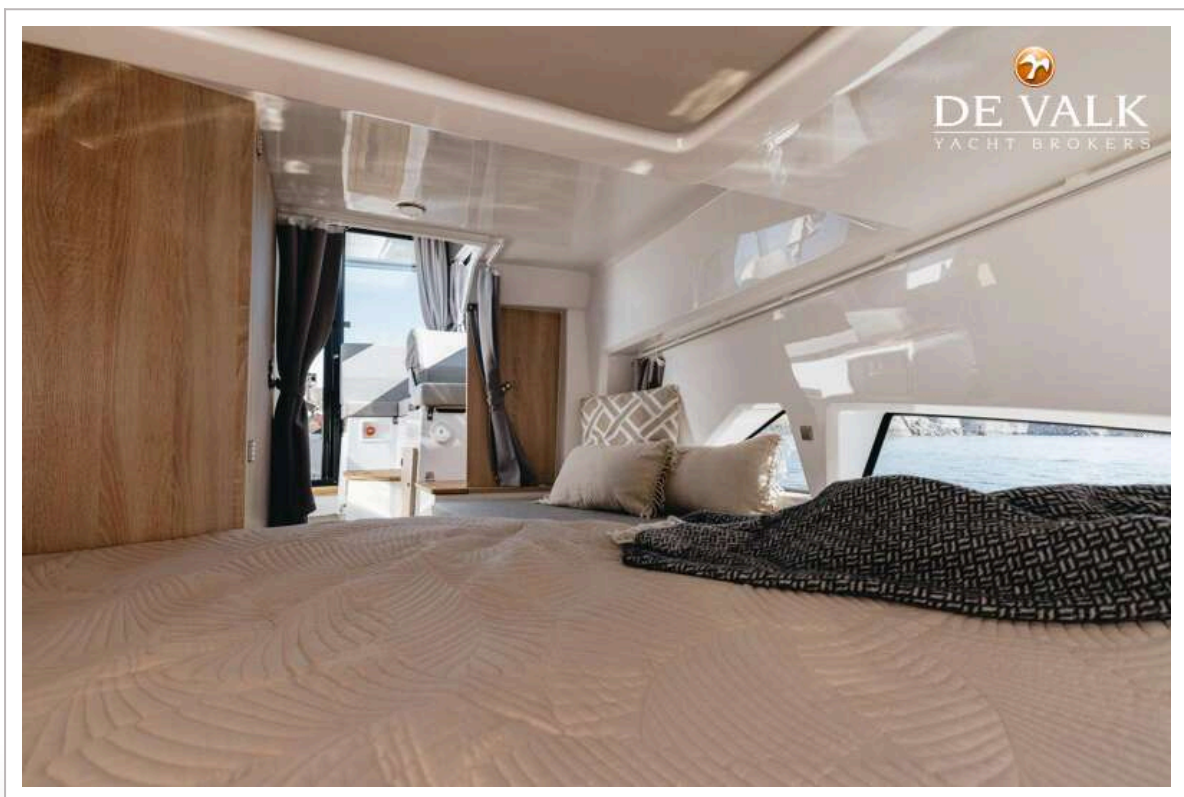
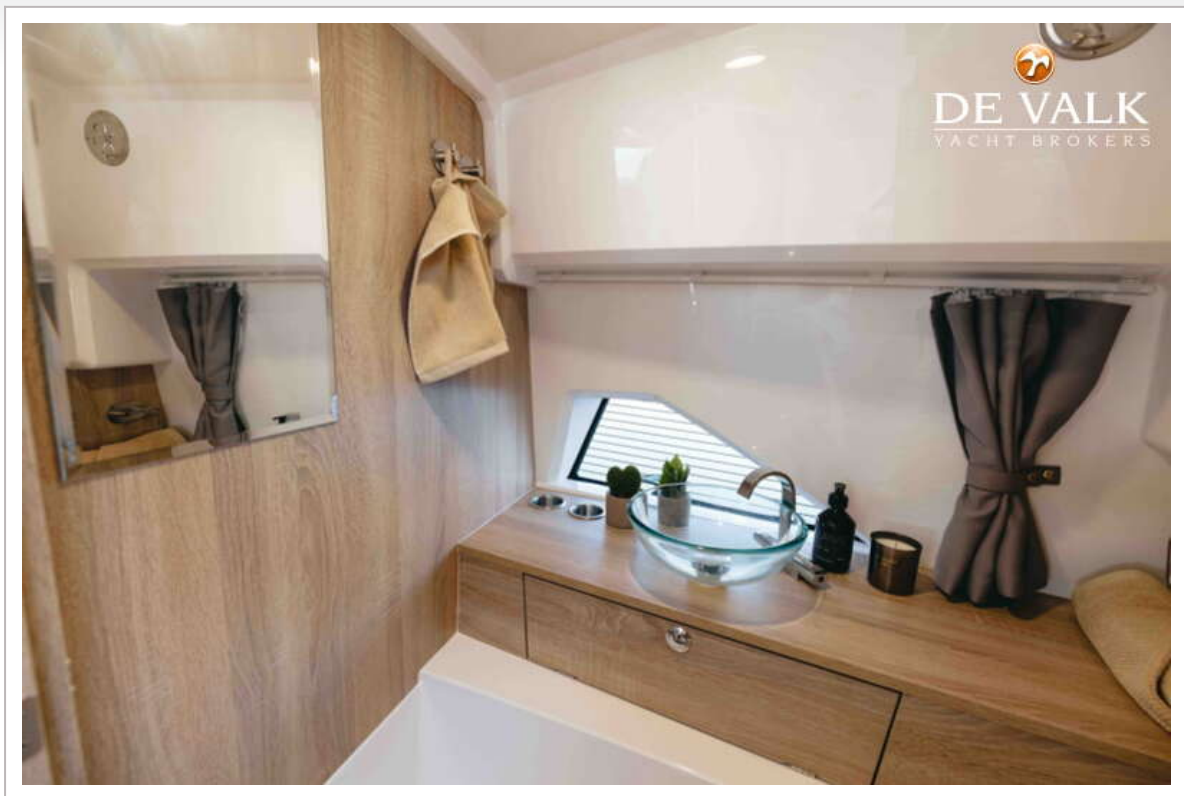
NORDKAPP GRAN COUPE 905



NORDKAPP GRAN COUPE 905



NORDKAPP GRAN COUPE 905



NORDKAPP GRAN COUPE 905

