



DE VALK



PEARSON 424



DE VALK
YACHT BROKERS

BROKER'S COMMENTS

The Pearson range are considered by many to be one of the finest of yachts built in the USA. This model is a serious long keel blue water cruiser constructed to a very high standard. The aft cockpit leads down the Captain's cabin with nav. table with easy access to the engine room. The very open and light galley-salon has it's own very practical stair access to deck, and you will find the guest cabin in the bow. The base is solid and strong, but the boat has jobs pending to bring her to her former glory.

Tue Simon Fasting

SPECIFICATIONS

Dimensions	12.90 x 3.96 x 1.60 (m)	Builder	Pearson Yachts
Built	1979	Cabins	2
Material	GRP	Berths	6
Engine(s)	1 x YANMAR 4JHE diesel	Hp/Kw	44.00 (hp), 32.38 (kw)
Asking price	Under Offer (VAT Not paid)	Lying	at sales office

CONTACT

Sales office	De Valk Barcelona	Telephone	+34932202825
Address	Barcelona region Barcelona Spain	E-mail	barcelona@devalk.nl

DISCLAIMER

These particulars are given in good faith as supplied but cannot be guaranteed.



GENERAL

Model	PEARSON 424
Type	sailing yacht
LOA (m)	12,90
Beam (m)	3,96
Draft (m)	1,60
Year built	1979
Builder	Pearson Yachts
Country	U.S.A.
Designer	William Shaw
Displacement (t)	9,5
CE norm	NA
Hull material	GRP
Hull colour	off-white
Hull shape	Mono hull
Keel type	long keel Encapsulated lead in one mold half keel design
Superstructure material	GRP
Deck finish	non-skid paint Kiwi grip
Superstructure deck finish	non-skid paint
Cockpit deck finish	non-skid paint
Antifouling (year)	2023
Fuel tank (litre)	302 in 1 tank new 2019
Level indicator (fuel tank)	yes
Freshwater tank (litre)	630 in 3 tanks
Level indicator (freshwater)	yes
Blackwater tank (litre)	60
Wheel steering	cable steering
More info on hull	Seacocks and thru hulls needs to be replaced
Extra info	Spanish commercial flag survey 2023
Extra info	Ballast lead 3.7T
Extra info	Berth available Port Balis, 40 km north of Barcelona



ACCOMMODATION

Cabins	2
Berths	6
Interior	teak Floor and ceiling needs attention
Floor	wood
Chart table	yes
Aft Cabin	Direct access to aft cockpit.
Galley	yes
Sink	stainless steel 2
Cooker	Techimpex "Compact classic" : 2 burners + oven, 2020
Oven	Gas new 2020
Gas alarm	1 + detector
Fridge	12V freezer in fridge
Hot water system	220V + engine
Kettle	yes
Owners cabin	double bed
Wardrobe	drawers and shelves
Bathroom	shared Needs renovation
Toilet	Manual RM69 installed 2021
Shower	shared
Guest cabin 1	double bed Forward cabin with sink
Wardrobe	drawers and shelves
Bathroom	shared
Shower	shared

MACHINERY

No of engines	1
Make	YANMAR
Type	4JHE
HP	44
kW	32.38



Fuel	diesel
Year installed	2000
Year of overhaul	Dec. 2019 general overhaul of the engine, removed from the boat.
Engine cooling system	freshwater heat exchanger
Drive	V-drive
Gearbox	hydraulic Need a revision
Exhaust	New Vetus inlet and exhaust engine pipes (2019)
Propeller type	Max prop
Battery charger	Dolphin Premium 12.40
Solar panel	2 solar panels 190W each , 12V, EcoGreen
Extra info	New bilge pumps 2019 Painted Dramboline
Extra info	The main engine is pending a revision

NAVIGATION

Compass	Danforth
Depth sounder	yes
VHF	ICOM IC-M330
VHF handheld	Cobre MR-HH350
Autopilot	Raymarine ST40
Radar	Furuno 1623
GPS	2
Plotter/GPS	yes
EPIRB	McMurdo E5 Smartfind
Navigation lights	LED

EQUIPMENT

Cockpit cushions	yes
Cockpit table	yes
Anchor	Bruce 15 kg
Anchor chain	50 m



Anchor 2	Bruce 30 kg
Windlass	Vetus
Life raft	Neptuno 9650 / 8 persons until 2024
Lifejackets	10 inflatable
Binocular	yes
Radar reflector	yes

RIGGING

Rigging	ketch More than 10 years old.
Standing rigging	wire
Material mast	aluminium Replaced in 2000
Keel stepped mast	yes
Mainsail	2012 fully battened
Mizzen	2020 fully battened
Jib	2018
Staysail	2019
Reefing System	slabreefing
Reefing winch	2
Multifunctional winches	halyard/sheet winches 2 X Harken
Extra info	In 2020 new screws and bolts of all the chainplates (main mast a



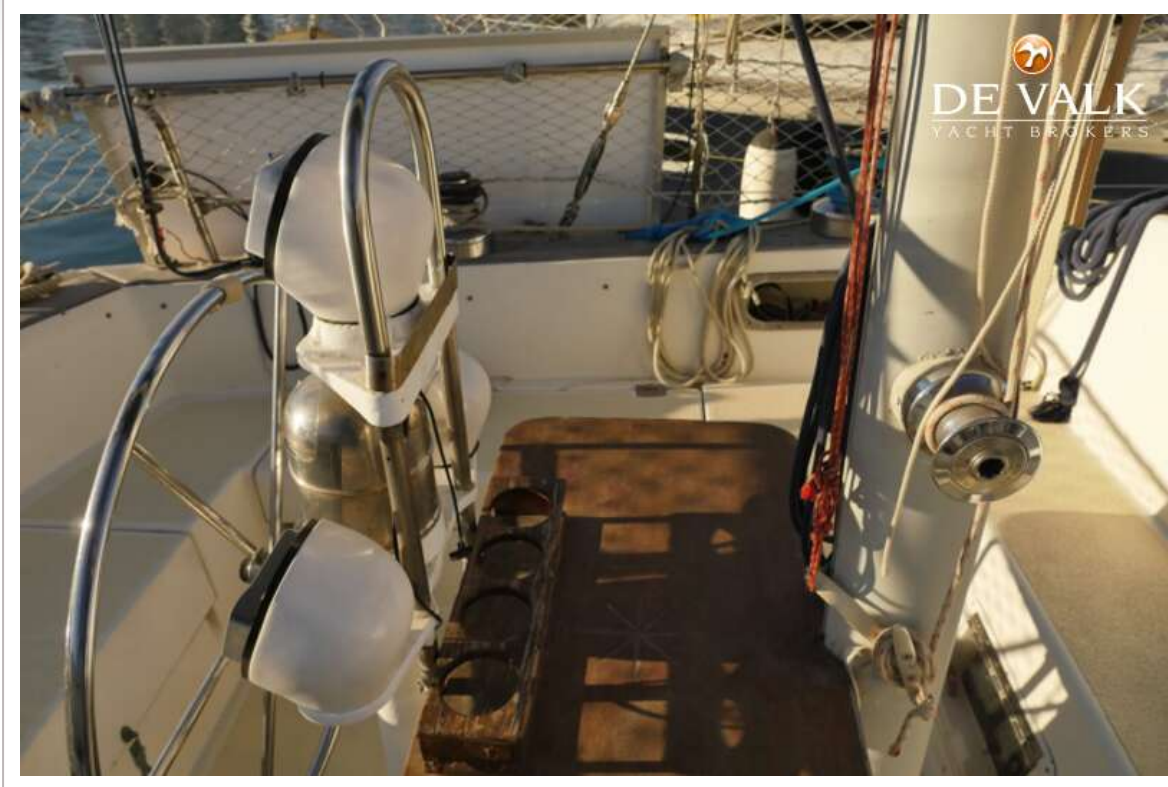
PEARSON 424







PEARSON 424







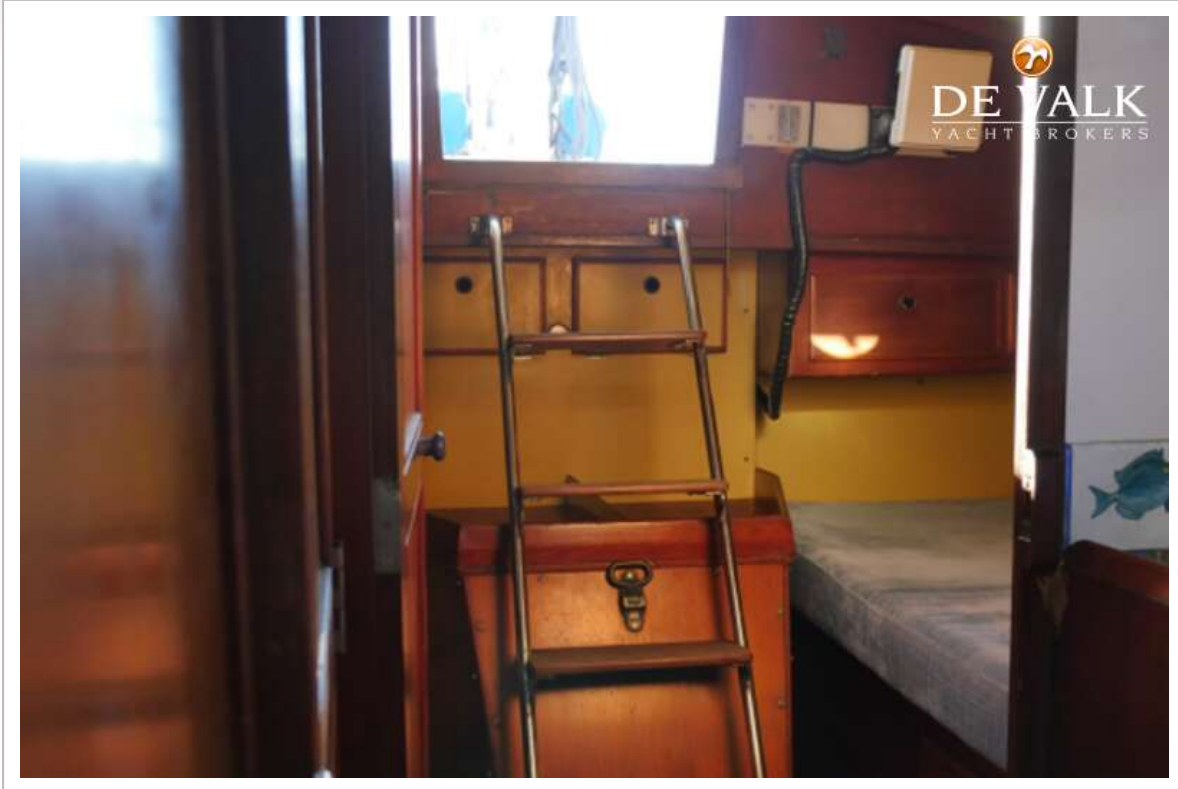
PEARSON 424



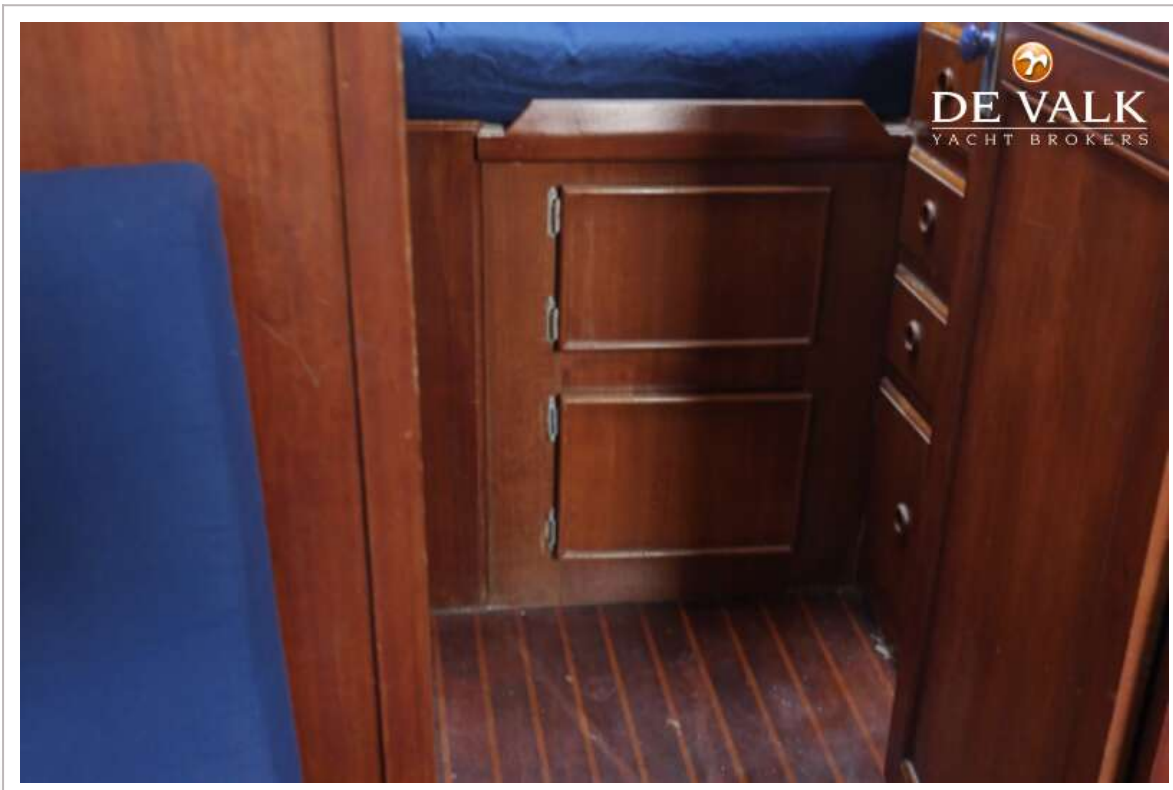
PEARSON 424



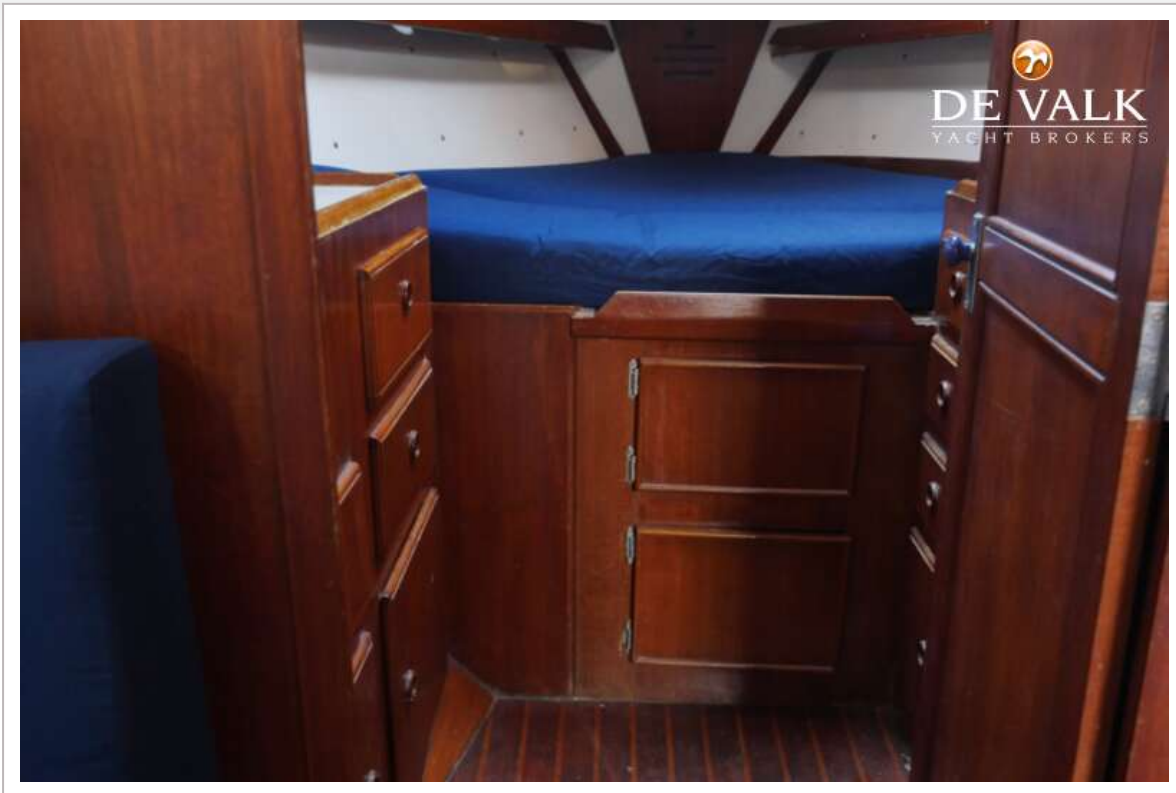
PEARSON 424



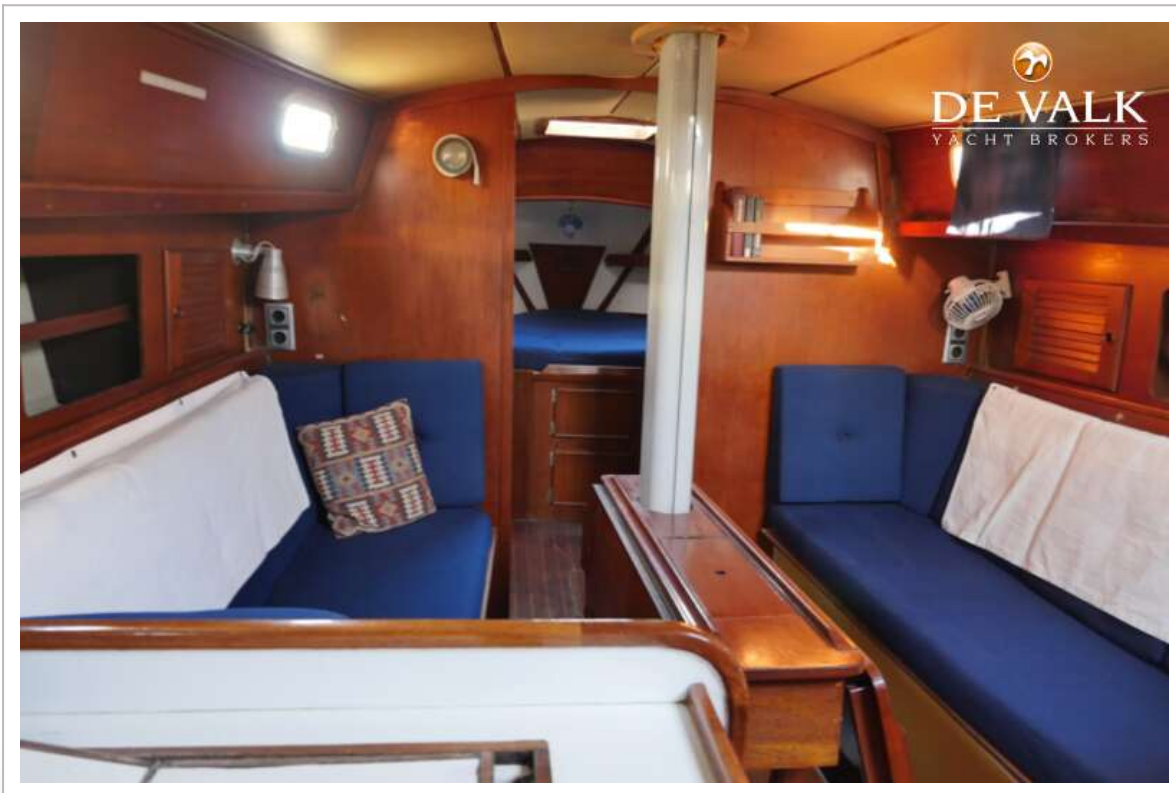
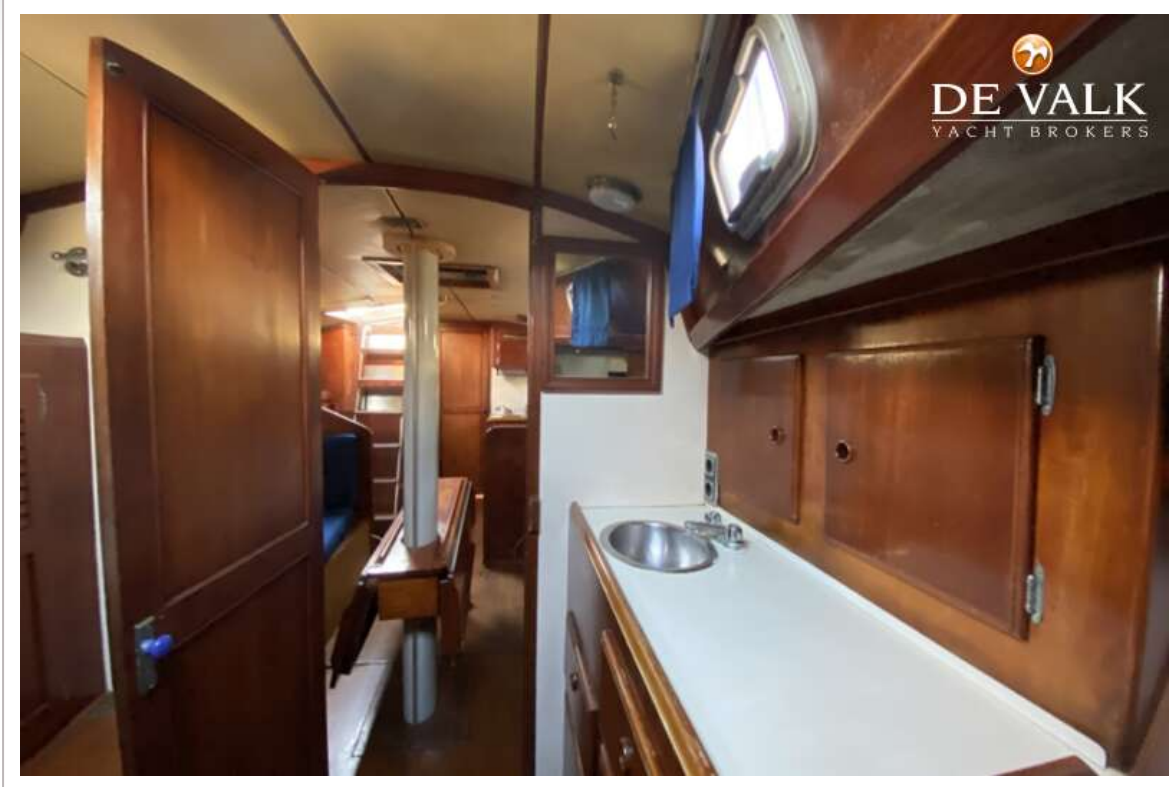
PEARSON 424



PEARSON 424



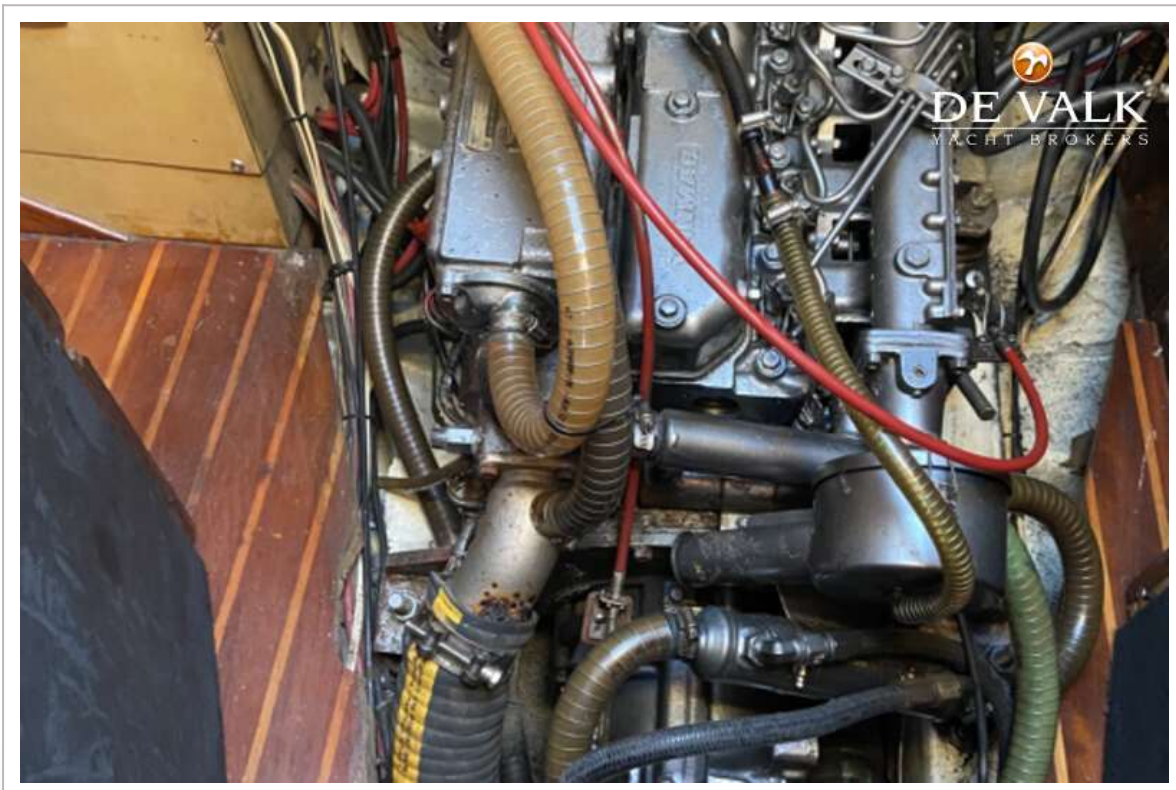
PEARSON 424



PEARSON 424



PEARSON 424



PEARSON 424

