



DE VALK  
YACHT BROKERS



## PALMER JOHNSON 110



DE VALK  
YACHT BROKERS

## BROKER'S COMMENTS

Originally named "Nazenin III", the luxury yacht "Keewaydin," translating to "home of the winds" in Native American Indian language, was completed in 1995 by Palmer Johnson. Renowned naval architect John G. Alden crafted her elegant exterior design. Inside, designer John Munford created a timeless ambiance with classic raised wooden panels, adorned with accents of marble. The layout boasts a full-width owner's suite and two guest staterooms, all featuring en-suite facilities. Accommodating up to 6 guests and 5 crew members, Keewaydin ensures a relaxed luxury yacht experience.

*Henk Jan Vissia*

## SPECIFICATIONS

<b>Dimensions</b>	33.50 x 7.16 x 2,60 / 5.55 (m)	<b>Builder</b>	Palmer Johnson Yachts LLC
<b>Built</b>	1995	<b>Cabins</b>	3
<b>Material</b>	Aluminium	<b>Berths</b>	6
<b>Engine(s)</b>	1 x Caterpillar 3408 diesel	<b>Hp/Kw</b>	470.00 (hp), 345.92 (kw)
<b>Asking price</b>	€ 2.950.000 (VAT Paid)	<b>Lying</b>	Greece

## CONTACT

<b>Sales office</b>	De Valk Hindeloopen	<b>Telephone</b>	+31 514 52 40 00
<b>Address</b>	Oosterstrand 1 8713 JS Hindeloopen The Netherlands	<b>E-mail</b>	hindeloopen@devalk.nl

## DISCLAIMER

These particulars are given in good faith as supplied but cannot be guaranteed.



## GENERAL

<b>Model</b>	PALMER JOHNSON 110
<b>Type</b>	sailing yacht
<b>LOA (m)</b>	33,50
<b>LWL (m)</b>	24,50
<b>Beam (m)</b>	7,16
<b>Draft (m)</b>	5,55
<b>Draft min (m)</b>	2,60
<b>Air draft (m)</b>	39,00
<b>Headroom (m)</b>	2,05
<b>Year built</b>	1995
<b>Builder</b>	Palmer Johnson Yachts LLC
<b>Country</b>	U.S.A.
<b>Designer</b>	John G. Alden
<b>Displacement (t)</b>	95
<b>Gross tonnage</b>	114
<b>Net tonnage</b>	34
<b>Hull material</b>	aluminium
<b>Hull colour</b>	Dark Green
<b>Hull shape</b>	S-bilged
<b>Keel type</b>	lifting keel - hydraulic by Holmatro
<b>Superstructure material</b>	Aluminium with teak
<b>Rubbing strake</b>	aluminum
<b>Deck material</b>	aluminium
<b>Deck finish</b>	teak
<b>Antifouling (year)</b>	NRG Marine Sonihull system
<b>Dorades</b>	2
<b>Window frame</b>	aluminium
<b>Window material</b>	double glazing
<b>Deckhatch</b>	3 custom for deck lockers, rest Lewmar
<b>Portholes</b>	aluminium



<b>Fuel tank (litre)</b>	aluminium 11.355
<b>Level indicator (fuel tank)</b>	Maretron DSM410
<b>Freshwater tank (litre)</b>	7.570
<b>Level indicator (freshwater)</b>	Maretron DSM410
<b>Blackwater tank (litre)</b>	2x 3.700
<b>Level indicator (blackwater)</b>	Maretron DSM410
<b>Blackwater tank extraction</b>	deck extraction + pump
<b>Wheel steering</b>	hydraulic
<b>Inside helm position</b>	In pilot house
<b>Emergency tiller</b>	+ wheel steering
<b>More info on paintwork</b>	Last painted 2020
<b>Extra info</b>	Last 4 years major refits, upgrades and renewals.
<b>Extra info</b>	List of works on request.
<b>Extra info</b>	Superb maintenance by very experienced owner

## ACCOMMODATION

<b>Cabins</b>	3
<b>Berths</b>	6
<b>Crew cabin</b>	3
<b>Crew berths</b>	5
<b>Interior</b>	teak By John Munford design
<b>Floor</b>	Teak flooring with carpets
<b>Open cockpit</b>	With U-shaped settee just aft the pilot house
<b>Aft deck</b>	With storage for the dinghy
<b>Pilot house</b>	Aft from the main saloon with centre wheel position and settees
<b>Saloon</b>	Above engine room with settees and dining table
<b>Headroom saloon (m)</b>	Approx. 2.05 metres
<b>Heating</b>	Electric heating
<b>Air-conditioning</b>	reverse cycle airco
<b>Navigation center</b>	In pilot house as well as in owners office
<b>Chart table</b>	In pilot house



<b>Sliding door to cockpit</b>	yes
<b>Galley</b>	In crew area outfitted to prepare meals at sea or in harbour
<b>Countertop</b>	corian
<b>Sink</b>	stainless steel
<b>Cooker</b>	induction Gaggenau
<b>Oven</b>	Miele
<b>Extractor</b>	Miele
<b>Microwave</b>	Magic Chef
<b>Fridge</b>	Double
<b>Freezer</b>	Double
<b>Hot water system</b>	220V + engine 2x 150 litre boiler
<b>Water pressure system</b>	electrical 24 and 220V
<b>Hot water tap</b>	yes
<b>Ice maker</b>	In saloon
<b>Waste compactor</b>	/maserator in sink
<b>Owners cabin</b>	double bed + single bed Comfortably equiped with settee
<b>Bed length (m)</b>	2.00 x 1.40 m. and 2.00 x 0.80 m.
<b>Wardrobe</b>	Several wardrobes with ample hanging, cabinets and drawers
<b>Bathroom</b>	en suite
<b>Toilet</b>	en suite
<b>Toilet system</b>	vacuum
<b>Wash basin</b>	in the bathroom
<b>Shower</b>	en suite
<b>Extra info</b>	Bidet in en suite bathroom
<b>Guest cabin 1</b>	twin single
<b>Bed length (m)</b>	2.00 x 0.75 m.
<b>Wardrobe</b>	With ample hanging and drawers
<b>Bathroom</b>	en suite
<b>Toilet</b>	en suite
<b>Toilet system</b>	vacuum
<b>Wash basin</b>	in the bathroom
<b>Shower</b>	en suite



<b>Guest cabin 2</b>	twin single
<b>Bed length (m)</b>	2.00 x 0.75 m.
<b>Wardrobe</b>	With ample hanging and drawers
<b>Bathroom</b>	en suite
<b>Toilet</b>	en suite
<b>Toilet system</b>	vacuum
<b>Wash basin</b>	in the bathroom
<b>Shower</b>	en suite
<b>Toilet</b>	Day head on port side of guest corridor
<b>Toilet system</b>	vacuum
<b>Wash basin</b>	at the toilet
<b>Extra info</b>	Owners office near master bedroom equipped with nav. instruments
<b>Crew cabin(s)</b>	3 crew cabins, sleeps 5, cap's has small double, rest bunk beds
<b>Bathroom (crew)</b>	Cap's en suite, rest is shared
<b>Toilet (crew)</b>	In bathroom
<b>Toilet system</b>	vacuum
<b>Wash basin</b>	in the bathroom
<b>Shower (crew)</b>	In the bathroom
<b>Extra info</b>	Cosy messroom equipped with back-up navigation systems
<b>Washing machine</b>	Miele Softtronic W5825
<b>Dryer</b>	Miele professional PT7135 C Vario
<b>Central vacuum cleaner</b>	yes
<b>Extra info</b>	Wine lockers in saloon integrated in the interior

## MACHINERY

<b>No of engines</b>	1
<b>Make</b>	Caterpillar
<b>Type</b>	3408
<b>HP</b>	470
<b>kW</b>	345.92



<b>Fuel</b>	diesel
<b>Year installed</b>	1995
<b>Maximum speed (kn)</b>	11
<b>Cruising speed (kn)</b>	9
<b>Consumption (l/hr)</b>	28
<b>Range (nm)</b>	3000
<b>Engine hours</b>	9153
<b>Engine cooling system</b>	freshwater heat exchanger
<b>Drive</b>	shaft
<b>Engine controls</b>	electrical Dockmate remote system with bow and stern thruster operation
<b>Gearbox</b>	hydraulic Reintjes type WAF 242
<b>Bowthruster</b>	hydraulic 2x Hydropower driven of either of PTO NL generators
<b>Sternthruster</b>	hydraulic 1x Hydropower driven of either of PTO NL generators
<b>Exhaust</b>	watercooled
<b>Propeller type</b>	feathering Hundested variable pitch with Spurs line cutter on shaft
<b>Propeller blades</b>	4
<b>Propeller shaft material</b>	stainless steel
<b>Shaft lubrication</b>	grease
<b>Electric bilge pump</b>	Flomax 4.5hp AC pump, 3x PAR AC pumps
<b>Bilge alarm</b>	High water bilge alarms 5x
<b>Electrical installation</b>	AC 230V, single phase 60Hz, DC 12/24 V users (AC 110V)
<b>Generator</b>	2x Northern Light 55 kVa, SB side overhaul 2015, service '23
<b>Running hours generator</b>	11-04-2024: PS 3.579hrs; SB 21.948hrs
<b>Generator 2</b>	Fisher Panda; 15000i 15kVa, installed 2023
<b>Running hours generator 2</b>	11-04-2023: 221hrs
<b>Batteries</b>	2023: 12x 220Ah; 12V
<b>Start battery</b>	2023: 2x 220Ah; 12V
<b>Navigation Battery</b>	2023: 2x 220Ah; 12V
<b>Generator battery</b>	2023: 2x 220Ah; 12V
<b>Battery monitor</b>	Several



<b>Battery charger</b>	Several Mastervolt and Victron
<b>Inverter</b>	2x ASEA 12 Kva shore power converters
<b>Shorepower</b>	100 amp inlet aft; Hubble cords and plugs
<b>Insulation transformer</b>	yes
<b>Watermaker</b>	2x Sea Recovery 1200 US gallons per day (reverse osmosis treat.)
<b>Extra info</b>	Holmatro centreboard lift with electric/hydraulic drive
<b>Extra info</b>	Lewmar Commander hydraulic packs (2) for rig and winch systems
<b>Extra info</b>	HPS hydraulic PTO each generator for windlass and thrusters

## NAVIGATION

<b>Compass</b>	Danforth liquid Compass
<b>Electric compass</b>	Furuno Satellite GPS gyrocompass
<b>Multi control display</b>	Maretron DSM 410 level indicators
<b>Depth sounder</b>	Furuno F1-150
<b>Windset</b>	B&G Hercules 2000 MFD wind/speed/direction
<b>Repeater</b>	Several in office, cockpit, cap's cabin and mess
<b>VHF</b>	1x Icom ICM330, 2x Icom 502
<b>VHF handheld</b>	2x
<b>Autopilot</b>	Furuno Nav-Pilot (revised 2017) + Simrad back-up
<b>Rudder angle indicator</b>	yes
<b>Radar</b>	Furuno 96 mile with AIS
<b>GPS</b>	Furuno Nav net GPS, 3D GPS (cap's cabin)
<b>Plotter</b>	Via computer systems
<b>Weather receiver</b>	yes
<b>Personal computer</b>	4x 15" Nauticomp (Pilothouse); 1x 15" in office, 1x flat. mess
<b>EPIRB</b>	2x 406 Epirb
<b>Personal MOB transmitter</b>	yes
<b>Camera</b>	2x Raymarine FLIR
<b>Navigation lights</b>	yes
<b>Searchlight</b>	yes





Loudhailer	yes
Extra info	KVH V7 Tracphone SATCOM; FB 250 receiver Panasonic PABX phone
Extra info	Furuno FS 5000 SSB; C-7280 telefax; Iridium+Starlink+Fleet one

## EQUIPMENT

Storm blinds	yes
Sun awning	yes
Window cover	yes
Cockpit cushions	2015
Cockpit table	Teak offering lots of space
Cockpit chairs	2
Boarding ladder	Manually operated, stainless steel with teak
Gangway	Hydraulic custom made
Anchor	CQR Lough Stainless steel
Anchor chain	Galvanized
Anchor 2	Rocna Stainless steel
Anchor chain	Galvanized
Capstan	2x Lewmar 6000
Dinghy	Williams Sportjet 460; year 2021
Deck crane	Via Mizzen boom
Sea railing	wire
Grab rail (superstructure)	teak
Pushpit	Stainless Steel
Pulpit	Stainless Steel
Life raft (pers)	2x 6 persons
Last life raft survey	01-2024
Lifejackets	yes
Rope cutter	yes
Wiper	4x
Window ventilator	yes



Horn	yes
Fenders	yes
Mooring lines	yes
Spare parts	yes
Tools	yes
TV	2023
TV receiver	yes
Satellite	yes
Radio	yes
DVD player	yes
Clock - barometer	yes
Fire extinguisher	yes
Extinguisher in engine room	yes
Auto extinguisher system	yes
Extra info	Bauer dive compressor with two diving cylinders

## RIGGING

Rigging	ketch-cutter
Standing rigging	Rod By BSI
Brand mast	Offshore Spars
Material mast	aluminium coated
Spreaders	Mast 3x, mizzen mast 2x
Keel stepped mast	yes
Mainsail	North Sails, 2020, 180m <sup>2</sup> plus spare 2023
Stoway mast	yes
Cutterstay	yes
Mizzen	North Sails, 2020, 70m <sup>2</sup>
Mizzen staysail	Gennaker Doyle, 2008, 162m <sup>2</sup>
Genoa furler	Reckmann, serviced 2020
Cutter furler	Reckmann, serviced 2020
Code Zero	Dustom Sails Croatia, 2022, 372m <sup>2</sup> with heavy-duty Karver furler



<b>Gennaker</b>	Doyle, 2008, 469m2
<b>Staysail</b>	North Sails, 2020, 77m2
<b>Yankee</b>	North Sails 2020, 182m2
<b>Stormjib</b>	Doyle
<b>Reefing System</b>	main in-mast furling Hood, serviced 2020
<b>Backstay adjuster</b>	hydraulic
<b>Boomvang</b>	hydraulic Holmatro
<b>Primary sheet winch</b>	2x Lewmar 111, hydraulic, 3 speed
<b>Secondary sheet winch</b>	2x Lewmar 77, hydraulic, 3 speed
<b>Genoa sheetwinches</b>	2x Lewmar 62 for Mizzen outhaul and sheet
<b>Halyard winches</b>	4x 77 Lewmar, hydraulic, 2 speed
<b>Multifunctional winches</b>	2x 62 Lewmar for Mizzen and staysail halyard, 1x 62 Pole lift
<b>Winchcovers</b>	yes
<b>Gennaker pole</b>	carbon
<b>Extra info</b>	Carbon fibre booms for main mast and mizzen by Offshore Spars
<b>Extra info</b>	Mast and rigging pulled 2020. All North Sails are 3Di type



# PALMER JOHNSON 110



# PALMER JOHNSON 110





# PALMER JOHNSON 110







# PALMER JOHNSON 110

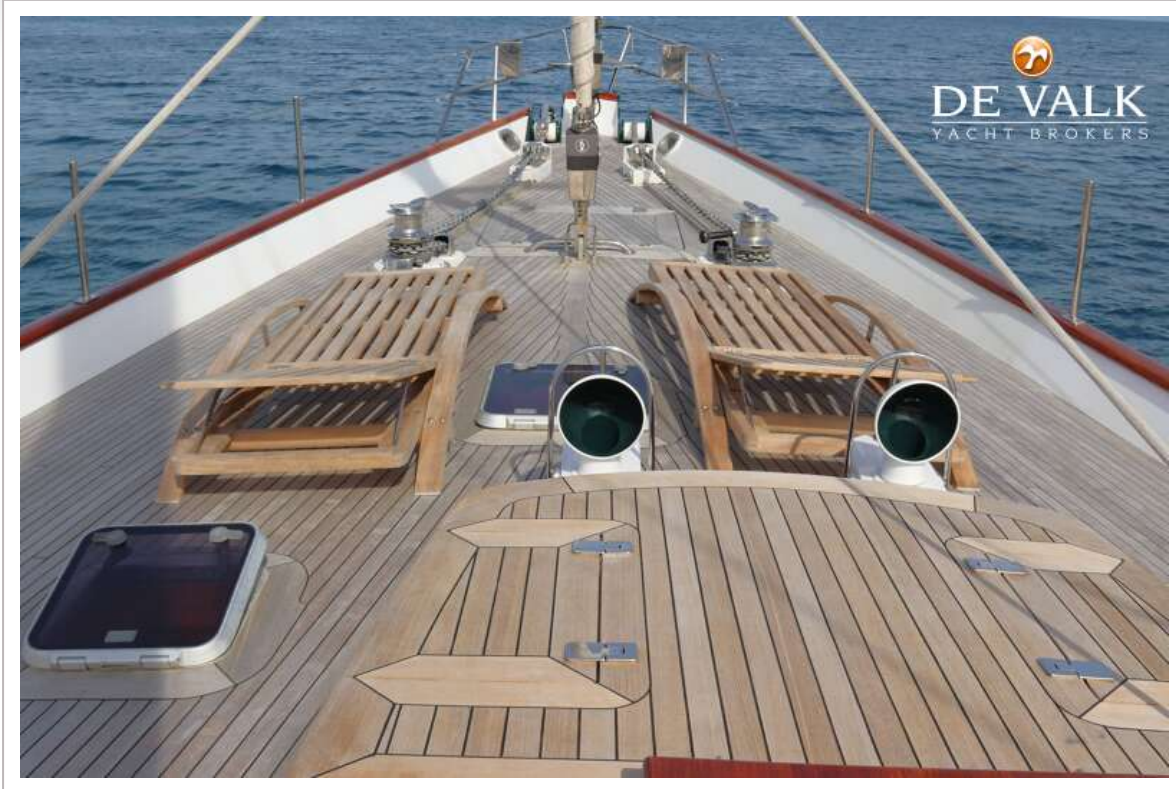




# PALMER JOHNSON 110



# PALMER JOHNSON 110

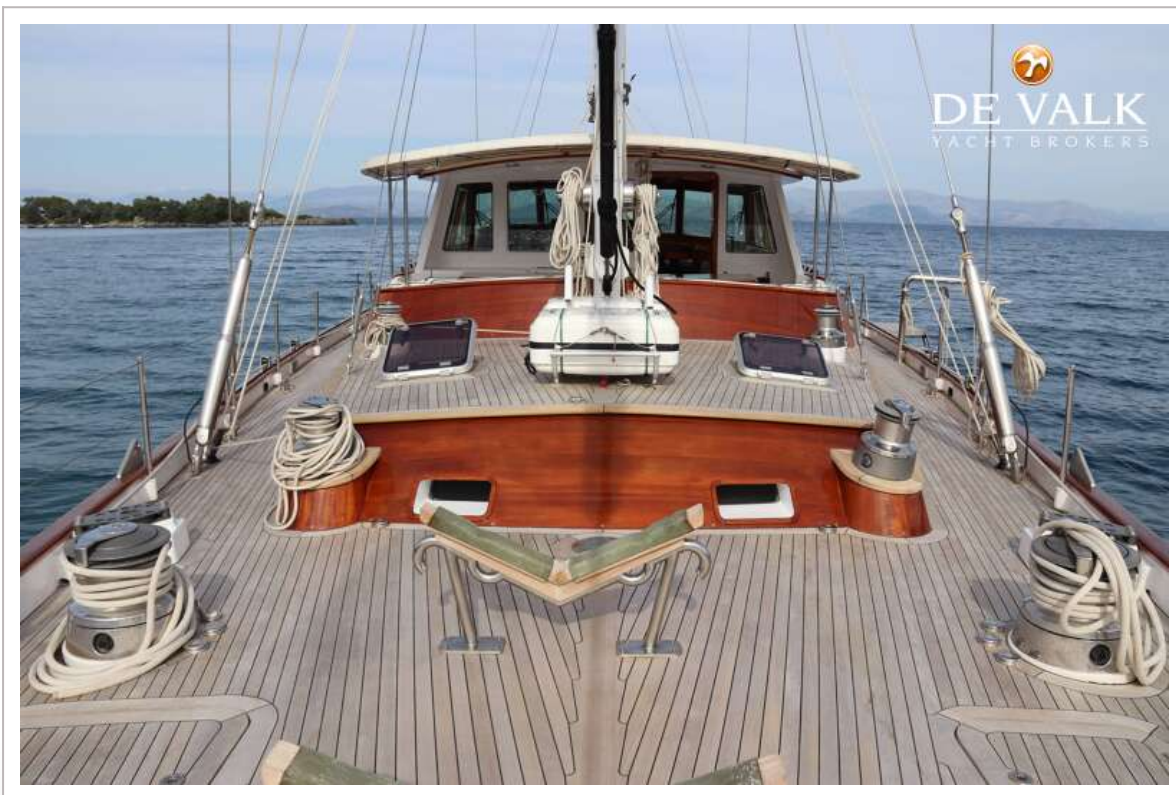




# PALMER JOHNSON 110

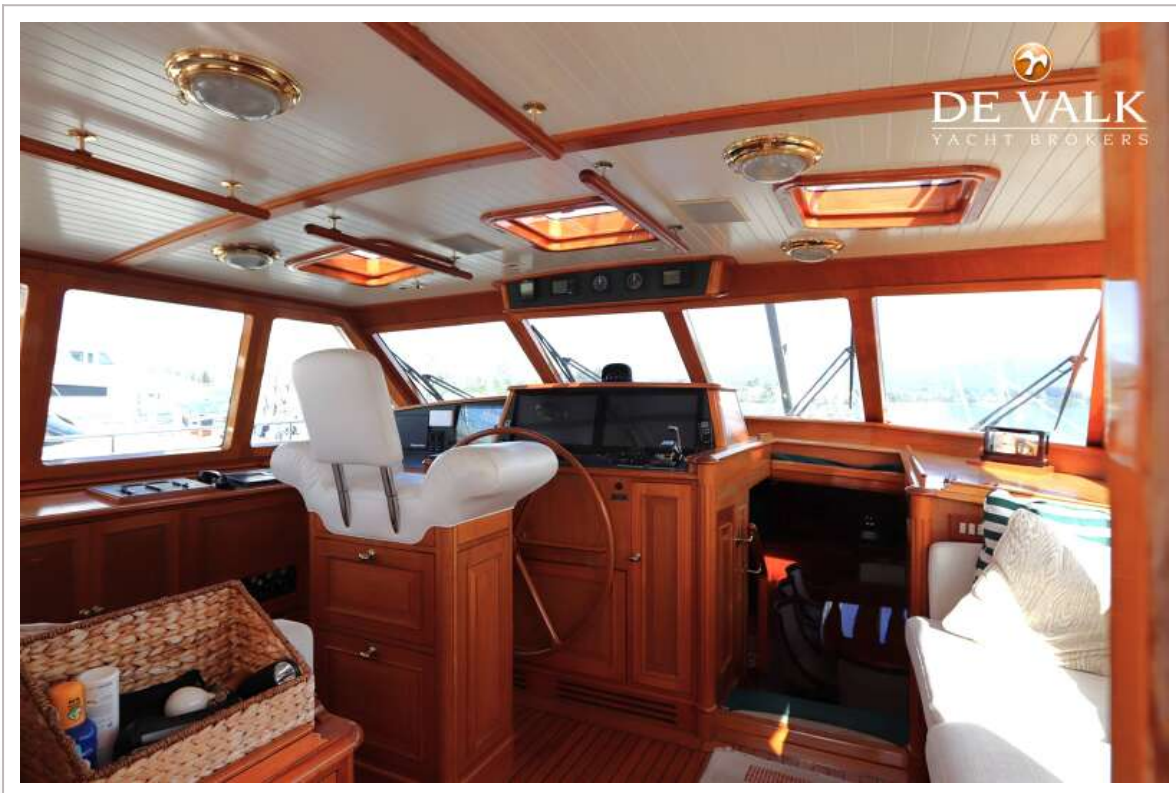


# PALMER JOHNSON 110





# PALMER JOHNSON 110



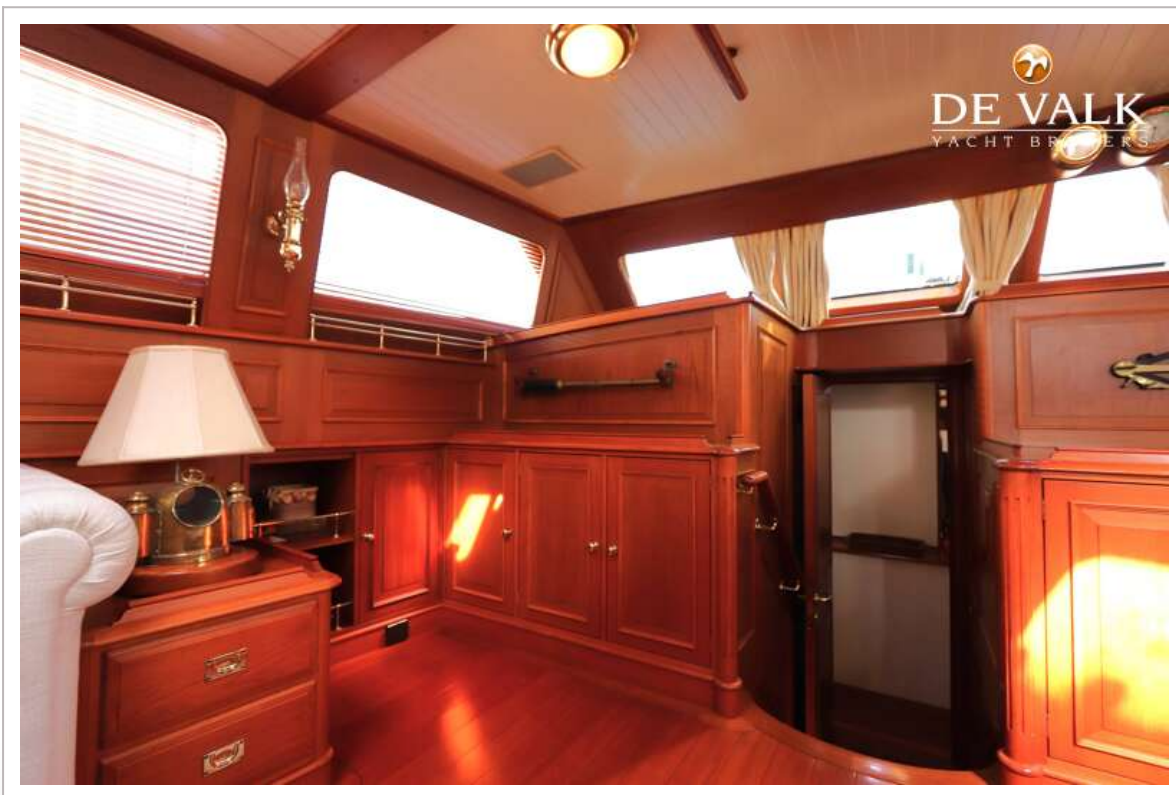
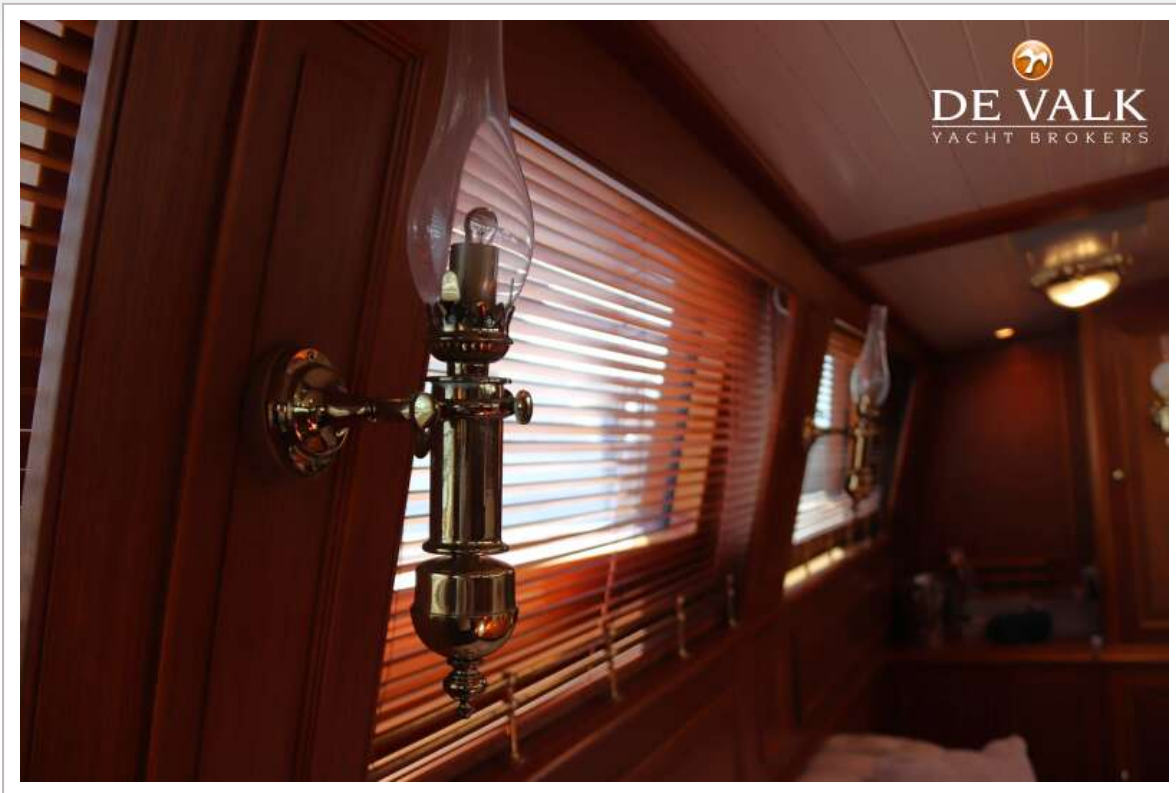
# PALMER JOHNSON 110





# PALMER JOHNSON 110



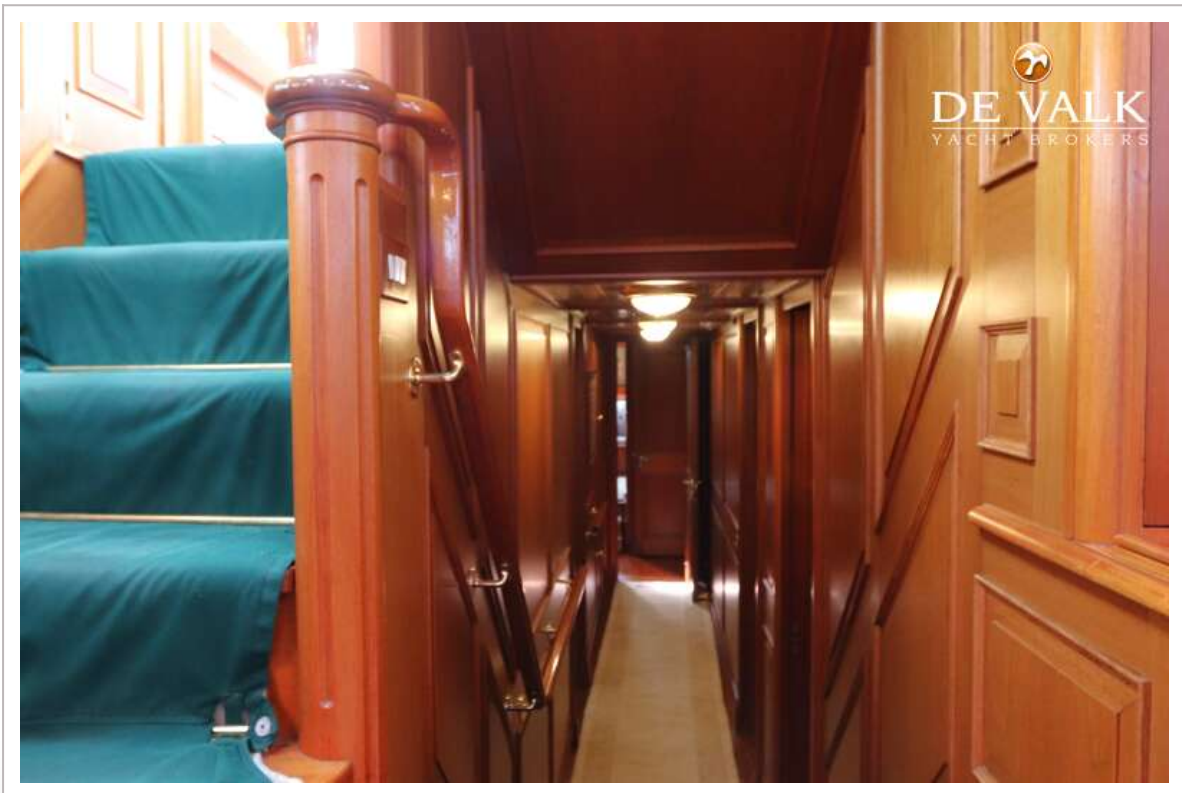




# PALMER JOHNSON 110

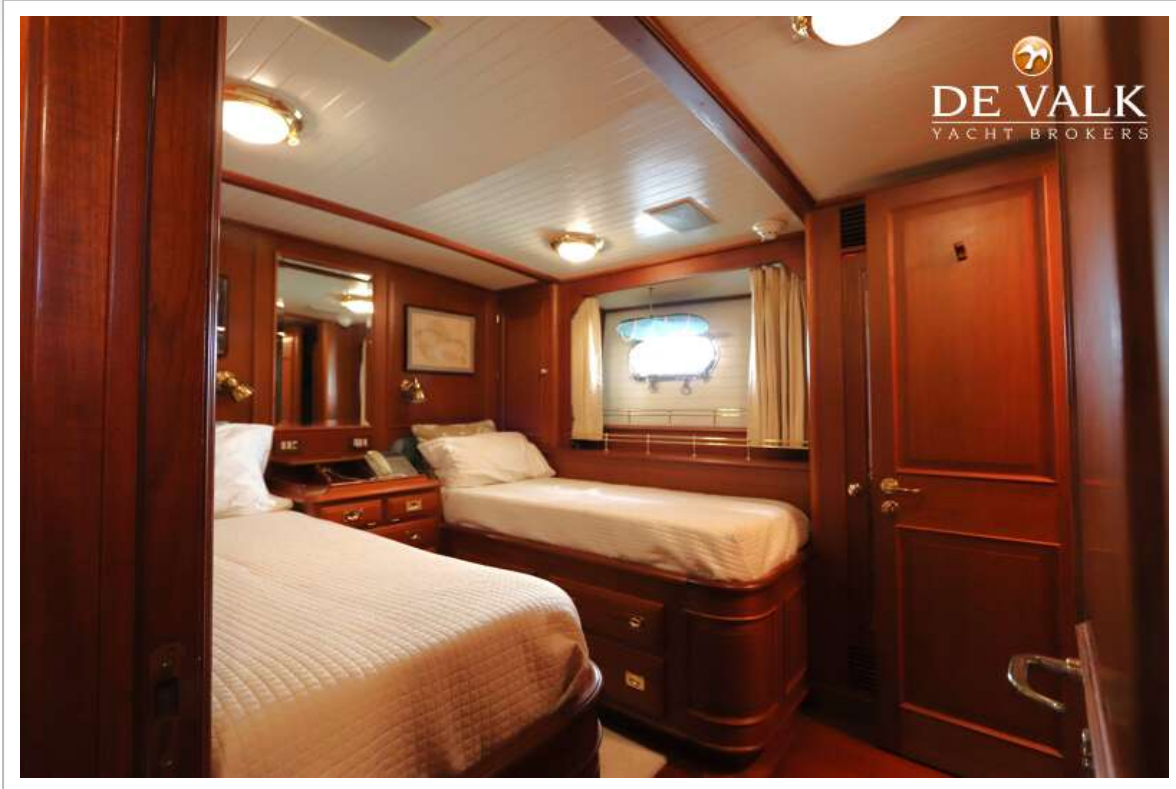


# PALMER JOHNSON 110

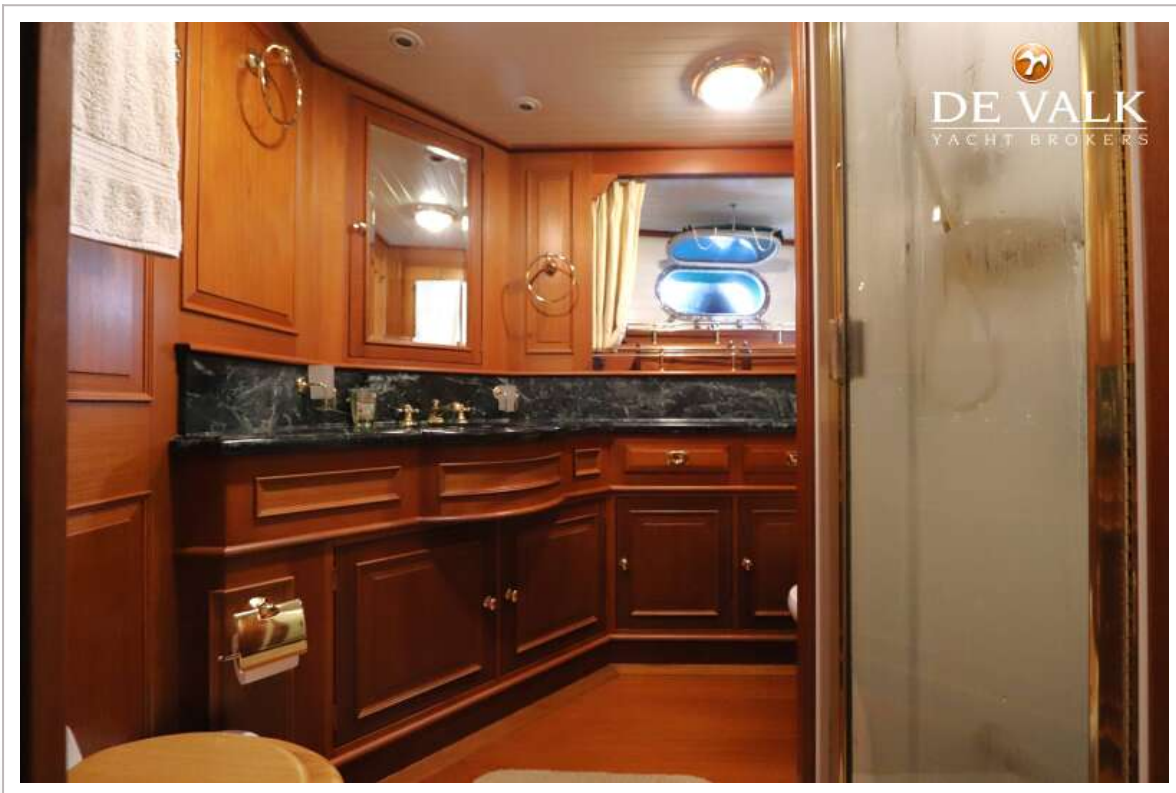




# PALMER JOHNSON 110

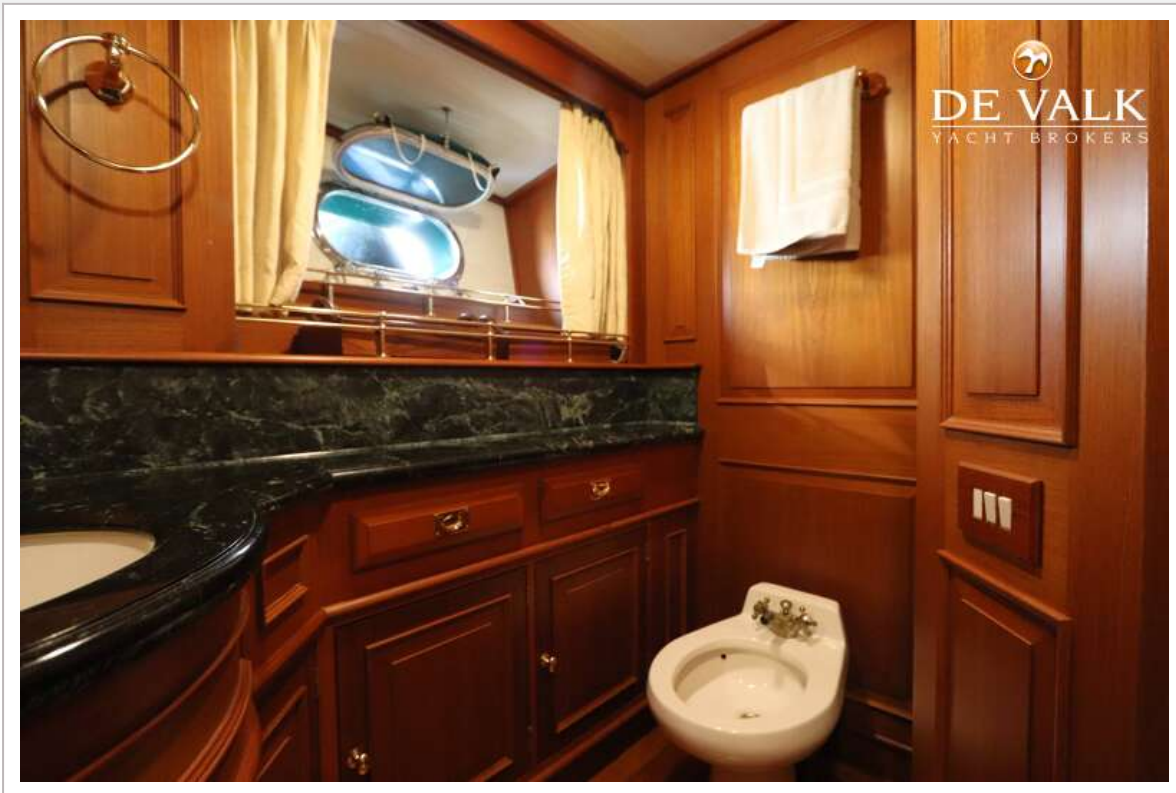


# PALMER JOHNSON 110

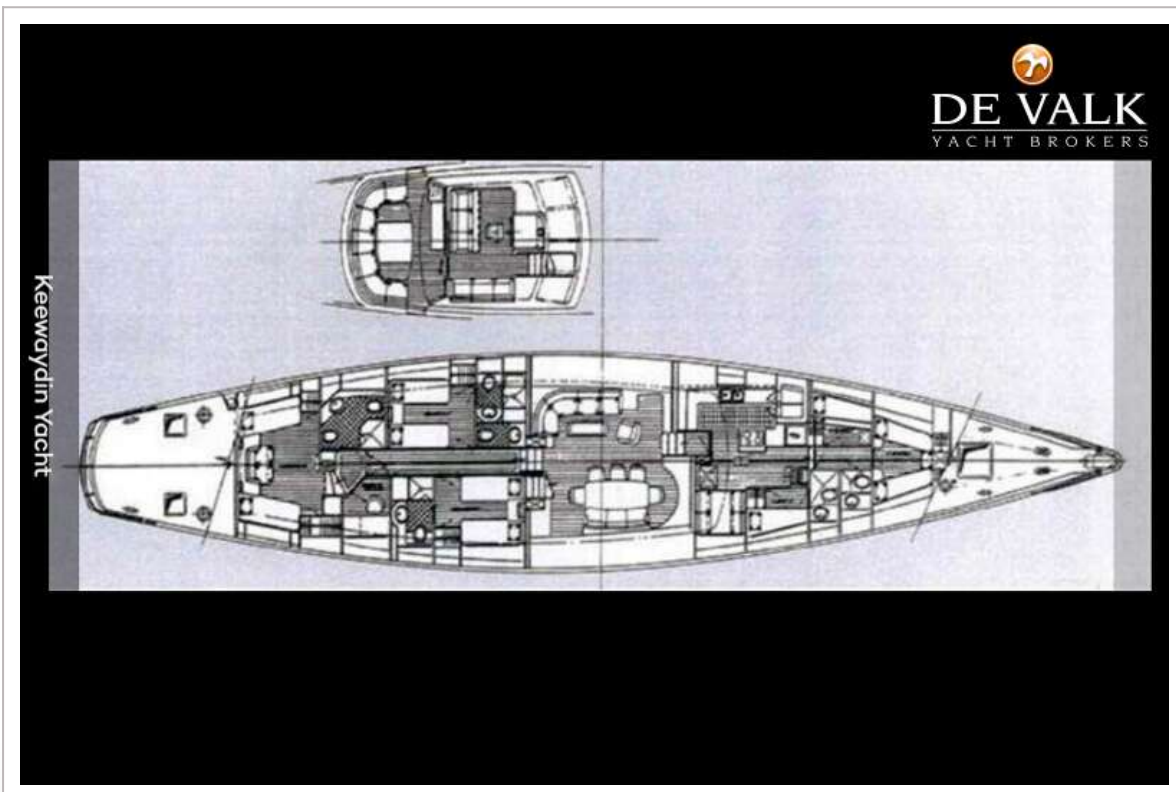




# PALMER JOHNSON 110

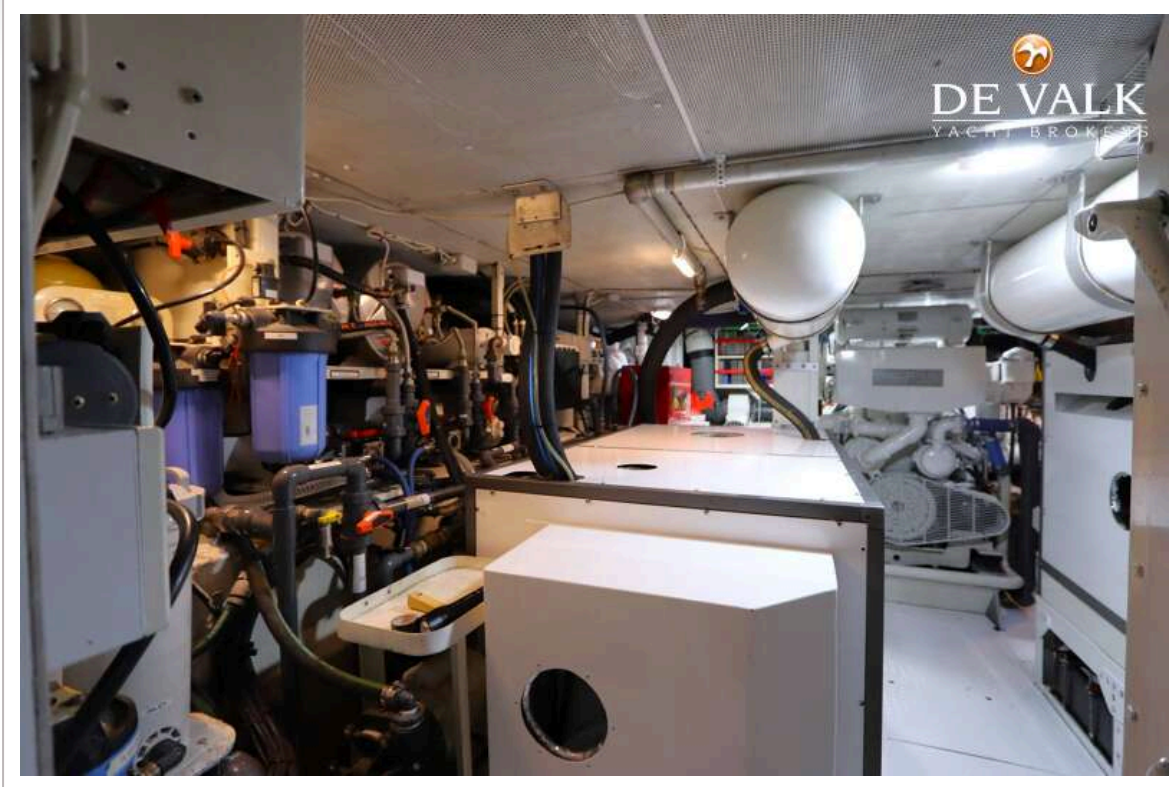


# PALMER JOHNSON 110





# PALMER JOHNSON 110



# PALMER JOHNSON 110

