



DE VALK  
YACHT BROKERS



CONTEST 38



DE VALK  
YACHT BROKERS

## BROKER'S COMMENTS

Are you seeking a solidly built, comfortable, and easily handled sailboat for family cruising? Look no further than this beautifully maintained Contest 38S, designed by renowned Dutch architect Dick Zaal. With 6 berths, a large aft cabin with en suite head, and a well-appointed galley, this yacht is perfect for extended voyages. The centre cockpit design maximizes interior space, providing ample room for relaxation and socializing. The saloon, while cozy, offers plenty of storage, and the forward cabin, although compact, provides a private retreat.

*Roberto Kelly*

## SPECIFICATIONS

<b>Dimensions</b>	11.36 x 3.66 x 1.40 (m)	<b>Builder</b>	Conyplex
<b>Built</b>	1992	<b>Cabins</b>	2
<b>Material</b>	GRP	<b>Berths</b>	6
<b>Engine(s)</b>	1 x Volvo 2003T diesel	<b>Hp/Kw</b>	45.00 (hp), 33.12 (kw)
<b>Asking price</b>	€ 79.001 (VAT Paid)	<b>Lying</b>	Spain

## CONTACT

<b>Sales office</b>	De Valk Barcelona	<b>Telephone</b>	+34932202825
<b>Address</b>	Barcelona region Barcelona Spain	<b>E-mail</b>	barcelona@devalk.nl

## DISCLAIMER

These particulars are given in good faith as supplied but cannot be guaranteed.



## GENERAL

<b>Model</b>	CONTEST 38
<b>Type</b>	sailing yacht
<b>LOA (m)</b>	11,36
<b>LWL (m)</b>	9,30
<b>Beam (m)</b>	3,66
<b>Draft (m)</b>	1,40
<b>Headroom (m)</b>	1,90
<b>Year built</b>	1992
<b>Builder</b>	Conyplex
<b>Country</b>	The Netherlands
<b>Designer</b>	Dick Zaal
<b>Displacement (t)</b>	8,5
<b>CE norm</b>	NA
<b>Hull material</b>	GRP
<b>Hull colour</b>	white
<b>Hull shape</b>	round-bilged
<b>Keel type</b>	Winged
<b>Superstructure material</b>	GRP
<b>Deck material</b>	mahogany
<b>Deck finish</b>	teak
<b>Superstructure deck finish</b>	non-skid moulded in
<b>Cockpit deck finish</b>	teak
<b>Antifouling (year)</b>	2024
<b>Fuel tank (litre)</b>	240
<b>Freshwater tank (litre)</b>	350
<b>Wheel steering</b>	cable steering

## ACCOMMODATION

<b>Cabins</b>	2
<b>Berths</b>	6



Interior	mahogany
Layout	Full headroom and comfortable aft. cabin
Floor	parquet
Saloon	yes
Heating	diesel ducted hot air Webasto 32hl
Chart table	yes
Aft Cabin	yes
Sliding door to cockpit	yes
Galley	U shaped
Countertop	Wood
Sink	Stainless steel
Cooker	Techimpex 3 burners
Oven	yes
Fridge	Frigomatic coolunit
Hot water system	By shore power and engine
Water pressure system	yes
Manual and/or foot pump	yes
Owners cabin	yes
Bed length (m)	2,00 x 1,60
Wardrobe	hanging and shelves
Bathroom	separate
Toilet	separate
Toilet system	manual
Wash basin	in the bathroom
Shower	separate
Guest cabin 1	double bed
Bed length (m)	2,00 x 1,50
Wardrobe	hanging and shelves
Bathroom	shared
Toilet	shared
Shower	shared



## MACHINERY

<b>No of engines</b>	1
<b>Make</b>	Volvo
<b>Type</b>	2003T
<b>HP</b>	45
<b>kW</b>	33.12
<b>Fuel</b>	diesel
<b>Year installed</b>	1992
<b>Engine hours</b>	3262
<b>Engine cooling system</b>	freshwater heat exchanger
<b>Drive</b>	shaft
<b>Gearbox</b>	Volvo Penta
<b>Bowthruster</b>	Sidepower SP95
<b>Propeller blades</b>	3
<b>Manual bilge pump</b>	yes
<b>Electrical installation</b>	yes
<b>Start battery</b>	90ah
<b>Service battery</b>	2 100ah
<b>Battery monitor</b>	yes
<b>Battery charger</b>	Victron 25A
<b>Shorepower</b>	yes

## NAVIGATION

<b>Compass</b>	C. Plath pedestal compass
<b>Depth sounder</b>	yes
<b>Log</b>	Autohelm Seatalk ST50
<b>Windset</b>	Seatalk ST50
<b>Repeater</b>	yes
<b>VHF</b>	Shipmate RS8100
<b>GPS</b>	Phillips AP Navigator
<b>Plotter</b>	Yeoman chartplotter



Navtex

Vecom Navtex plus

## EQUIPMENT

Sprayhood	yes
Cockpit cover	yes
Cockpit table	yes
Anchor	yes
Anchor chain	yes
Windlass	yes
Davits	yes
Life raft	Need service
Life raft (pers)	4
Fenders	yes
Mooring lines	yes
Radio-cd player	yes
Speakers in salon	yes
Fire extinguisher	Need service

## RIGGING

Rigging	sloop With removable inner forestay
Standing rigging	wire
Brand mast	Seldén
Material mast	aluminium
Spreaders	2 sets
Mainsail cover	yes
Fully battened mainsail	De Vries (1991)
Jib	yes
Genoa	De Vries (2000)
Backstay adjuster	Insulated
Primary sheet winch	2x Enkes 28ASC
Halyard winches	2x Enkes 22ASC



**Reefing winch**

Enkes 18 for genoa reefing

**Multifunctional winches**

Enkes 10 and Enkes 25 on mast

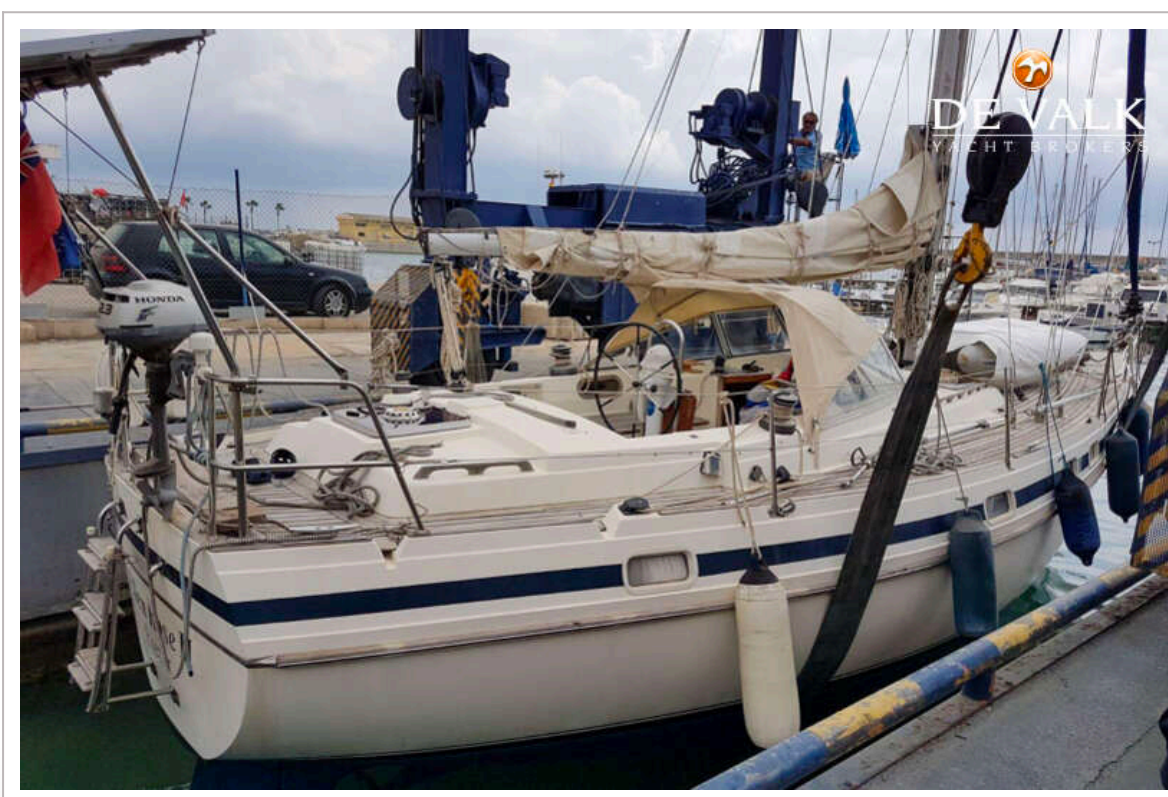
**Spi-pole**

yes

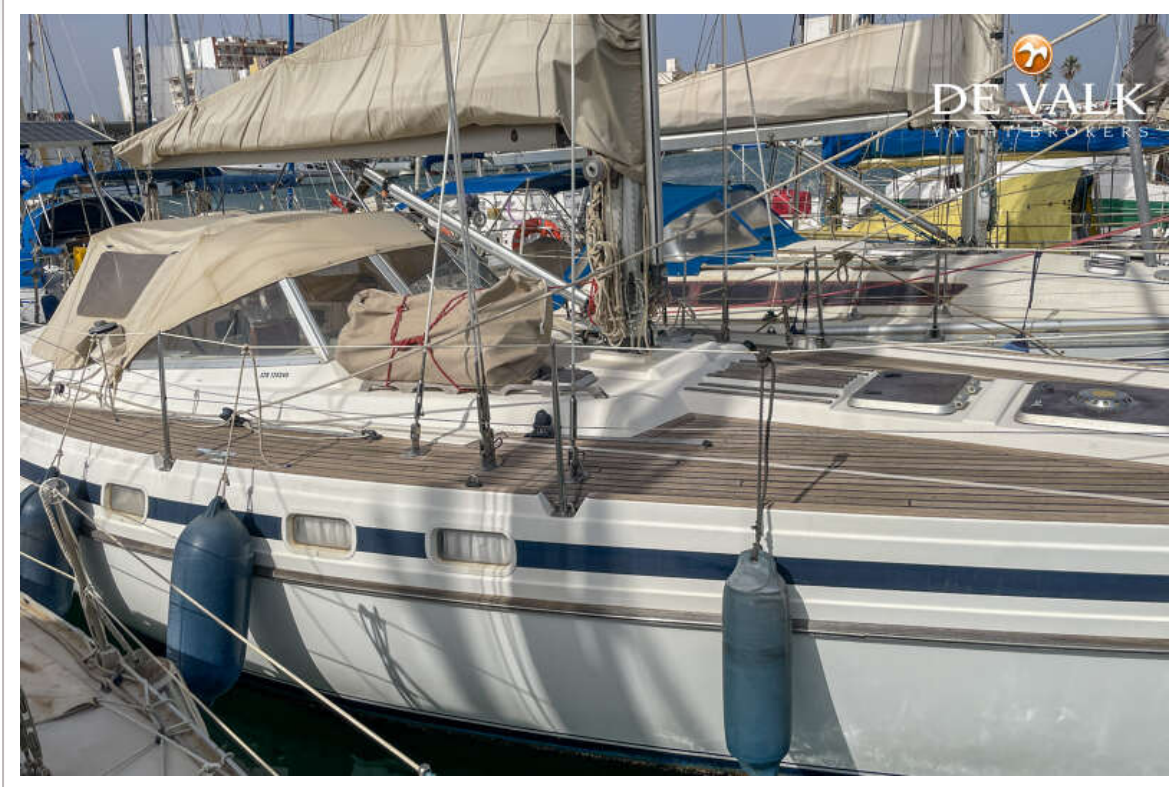
**Isolated backstay**

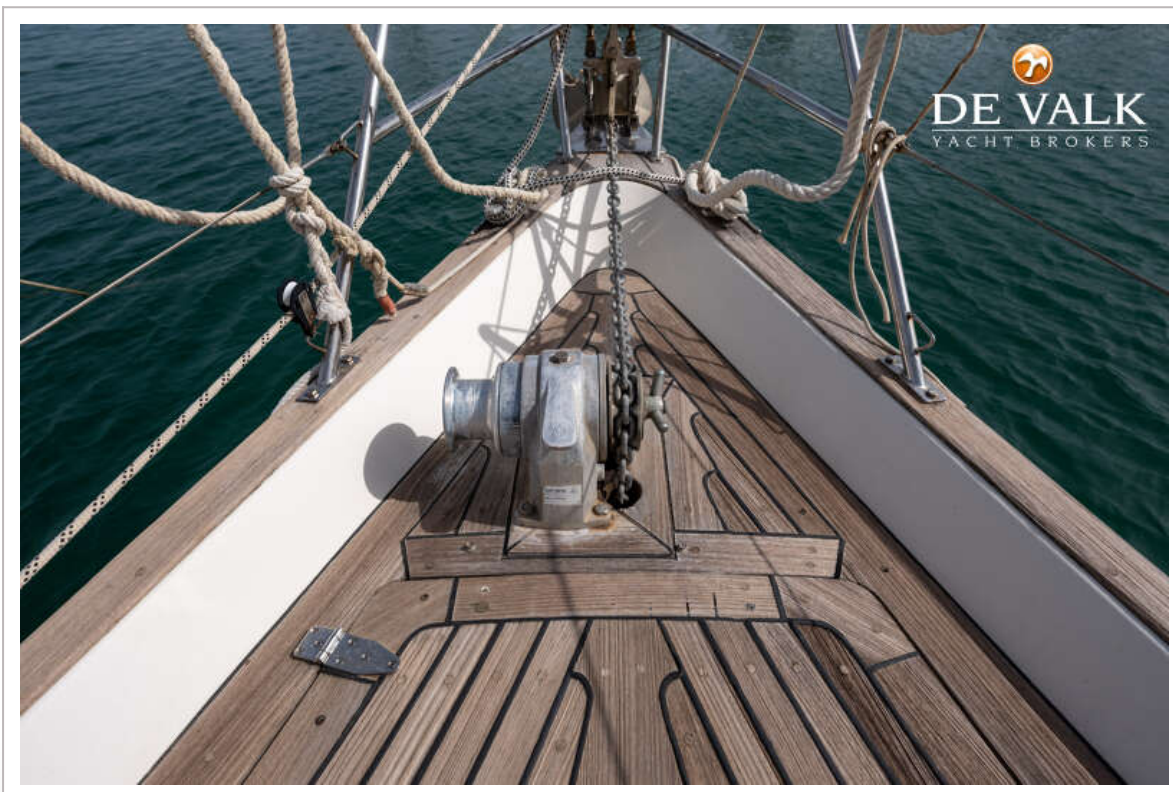
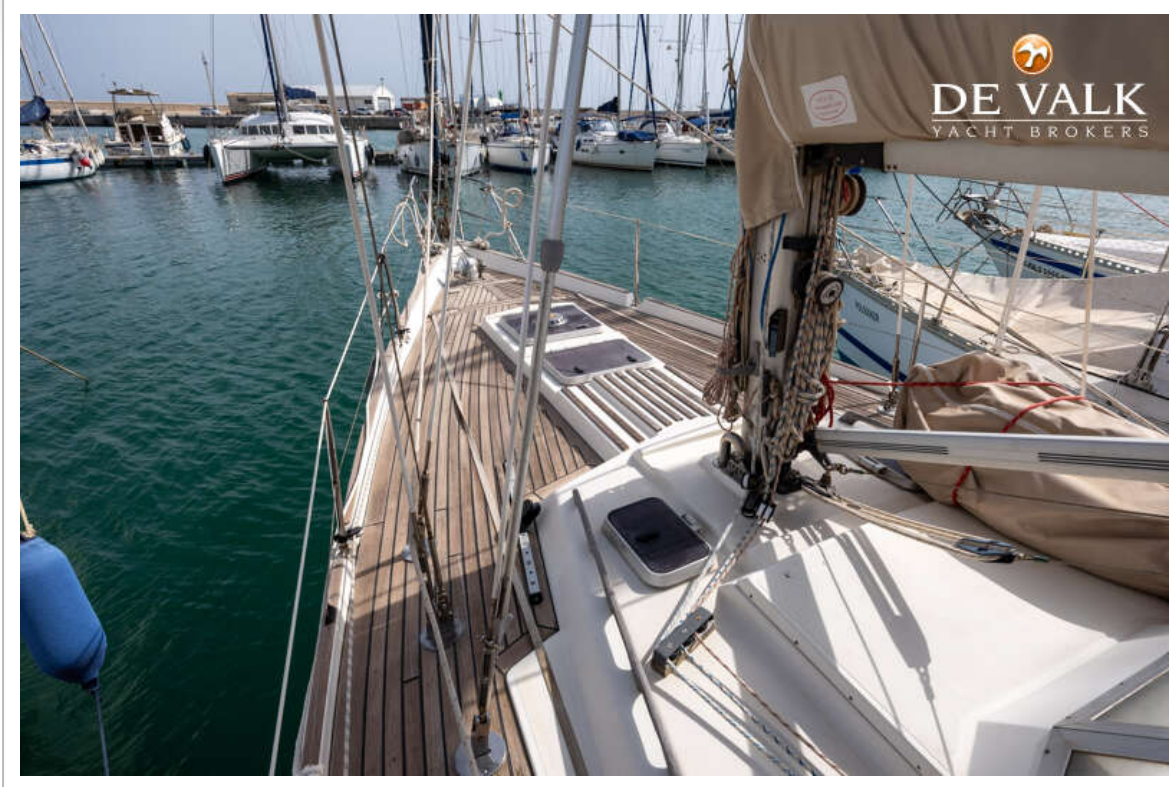
yes



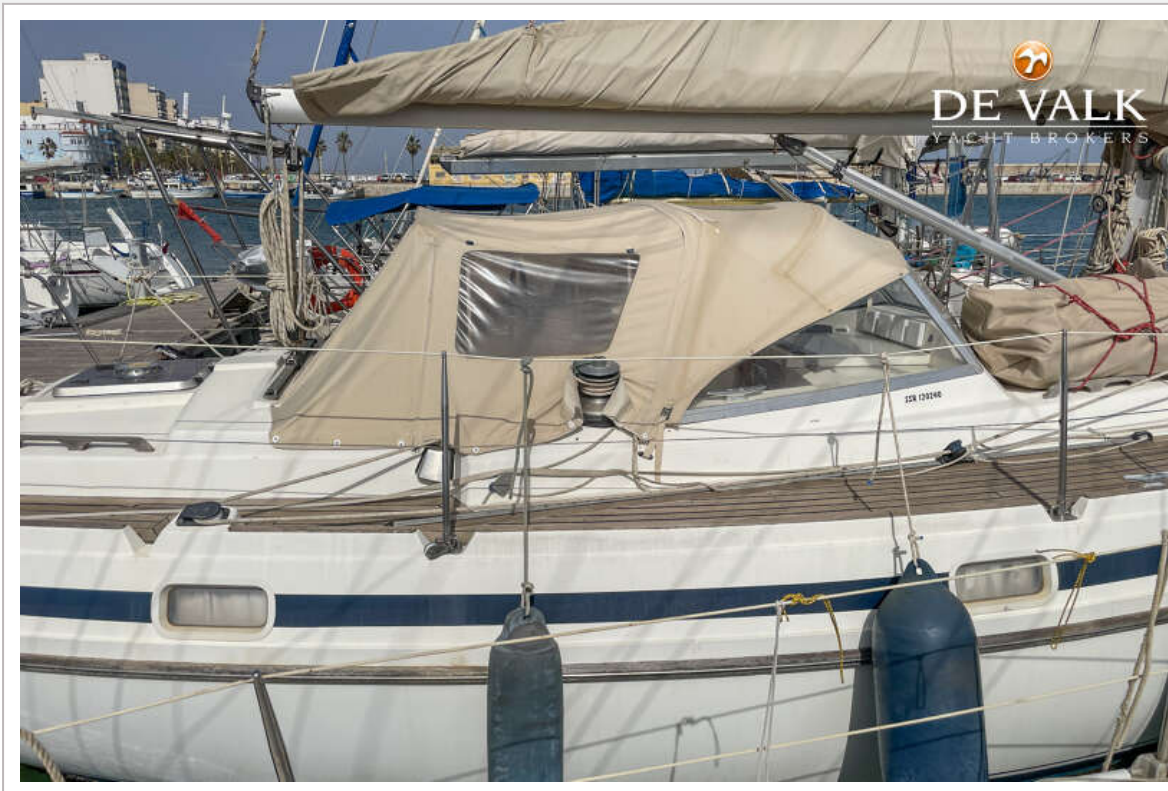


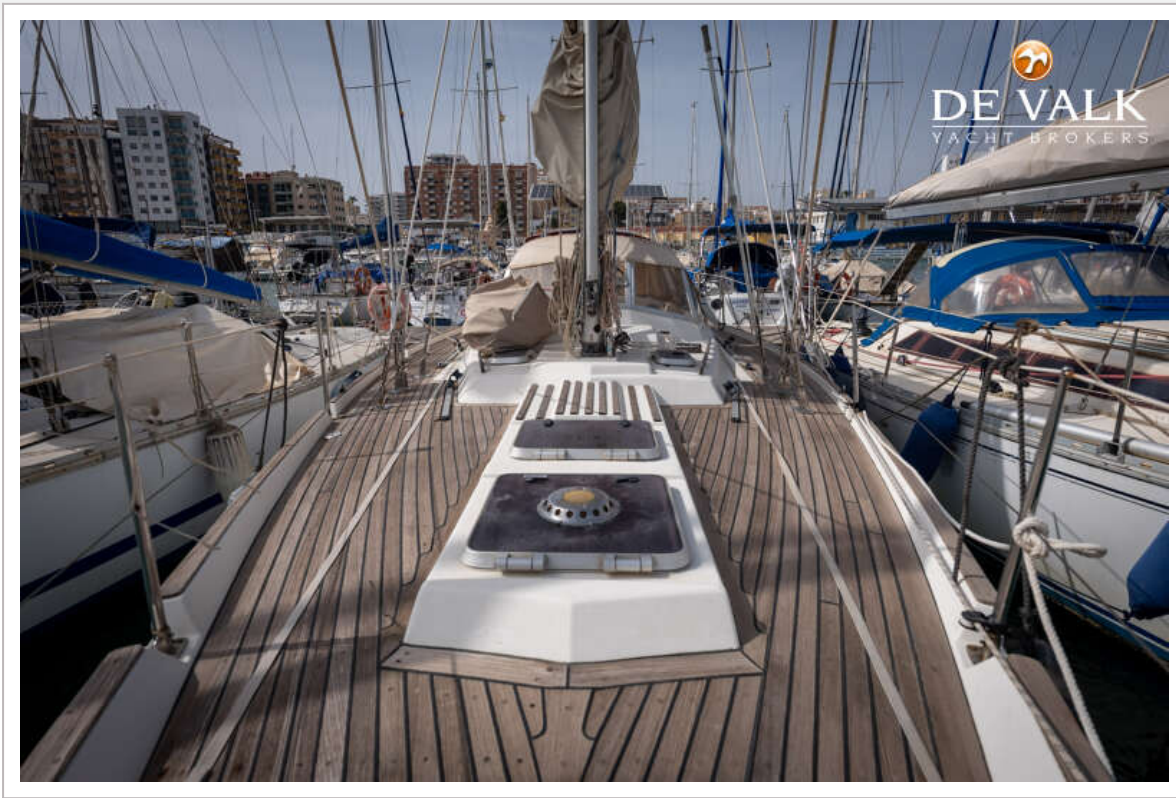






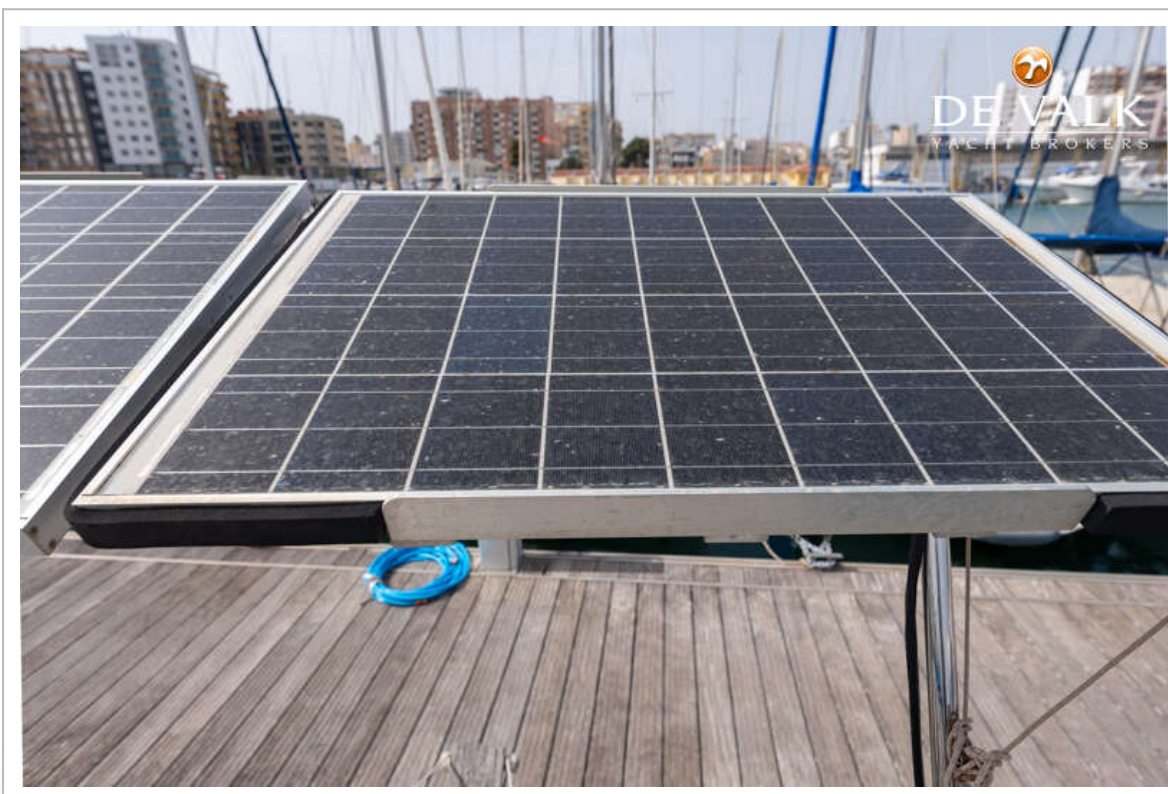




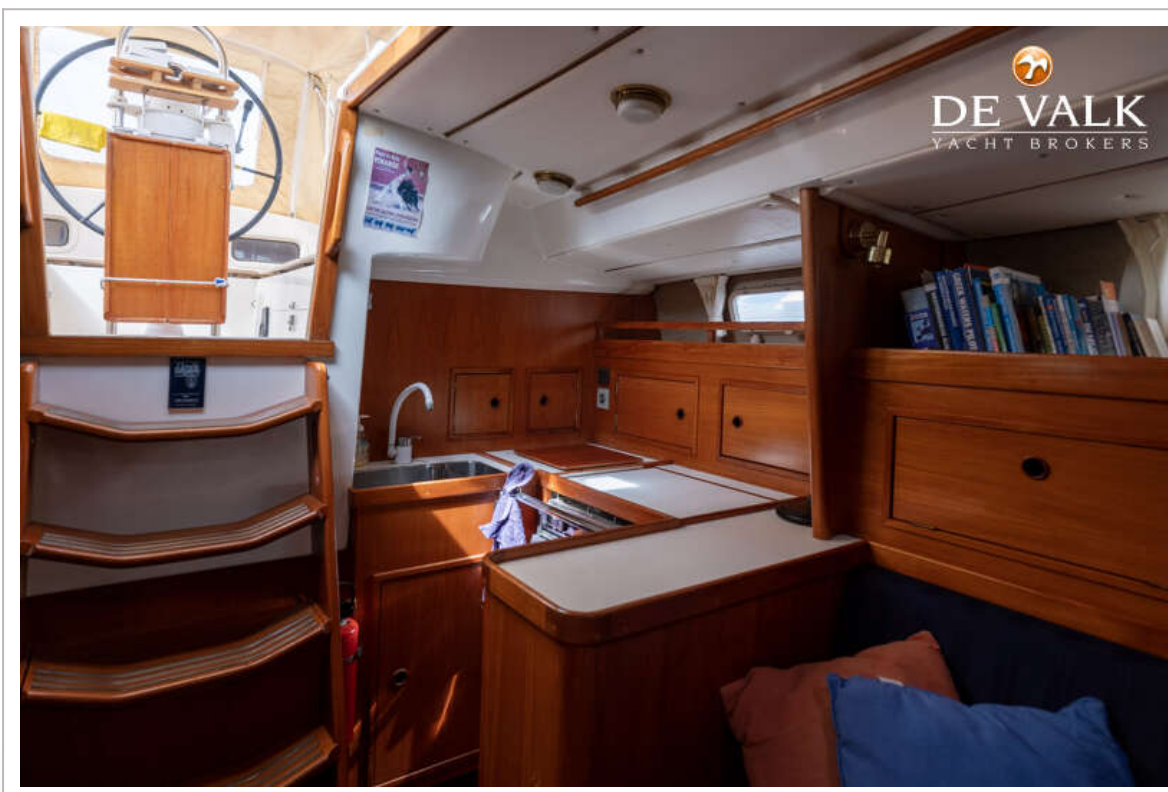




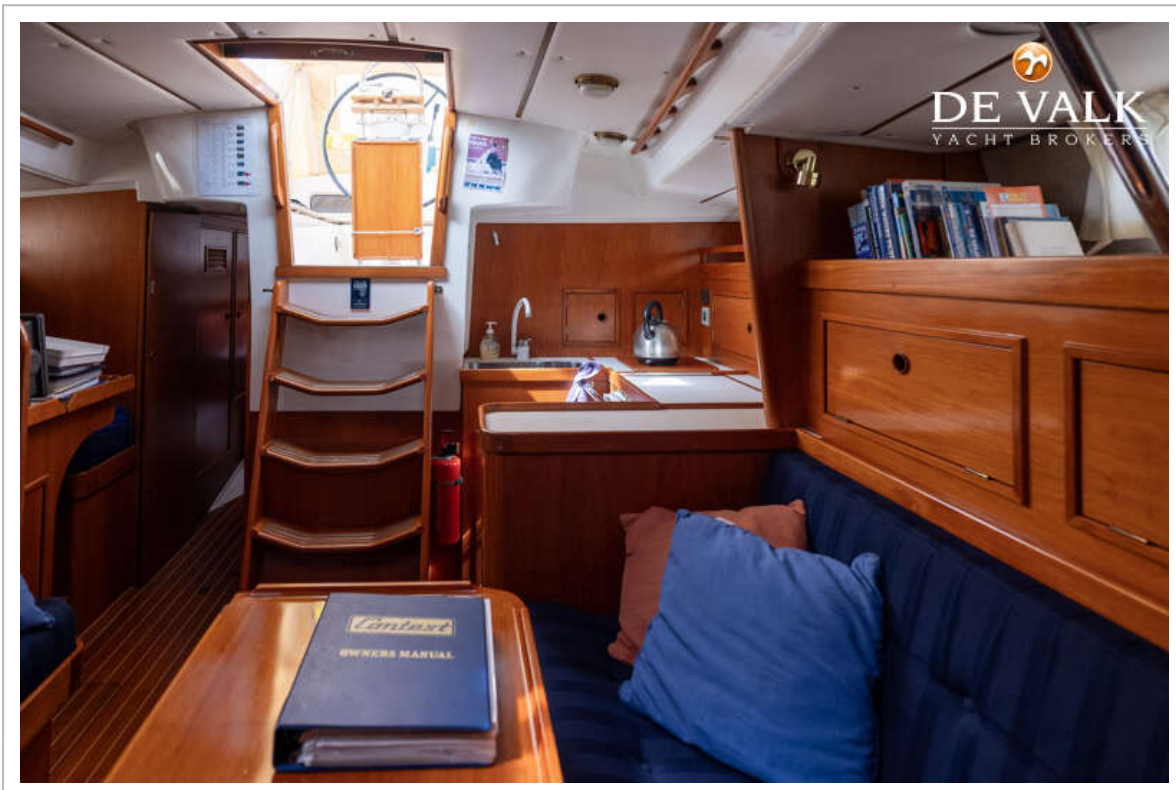


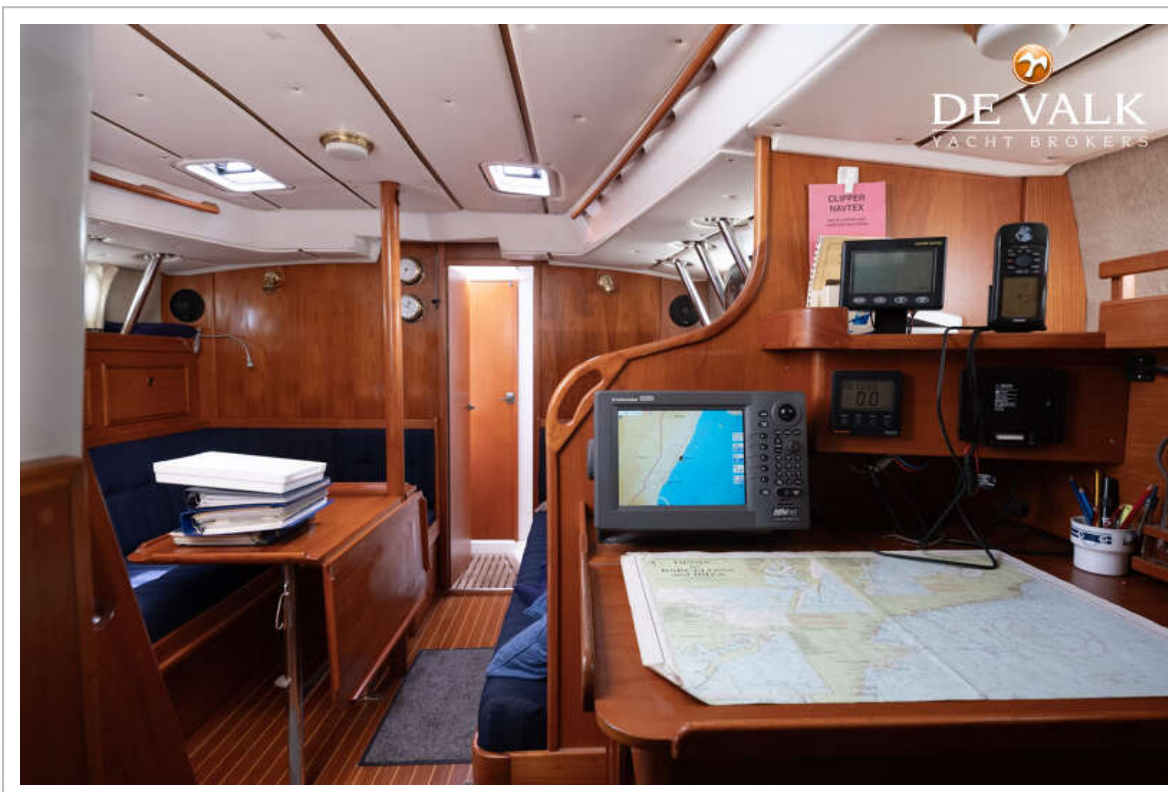


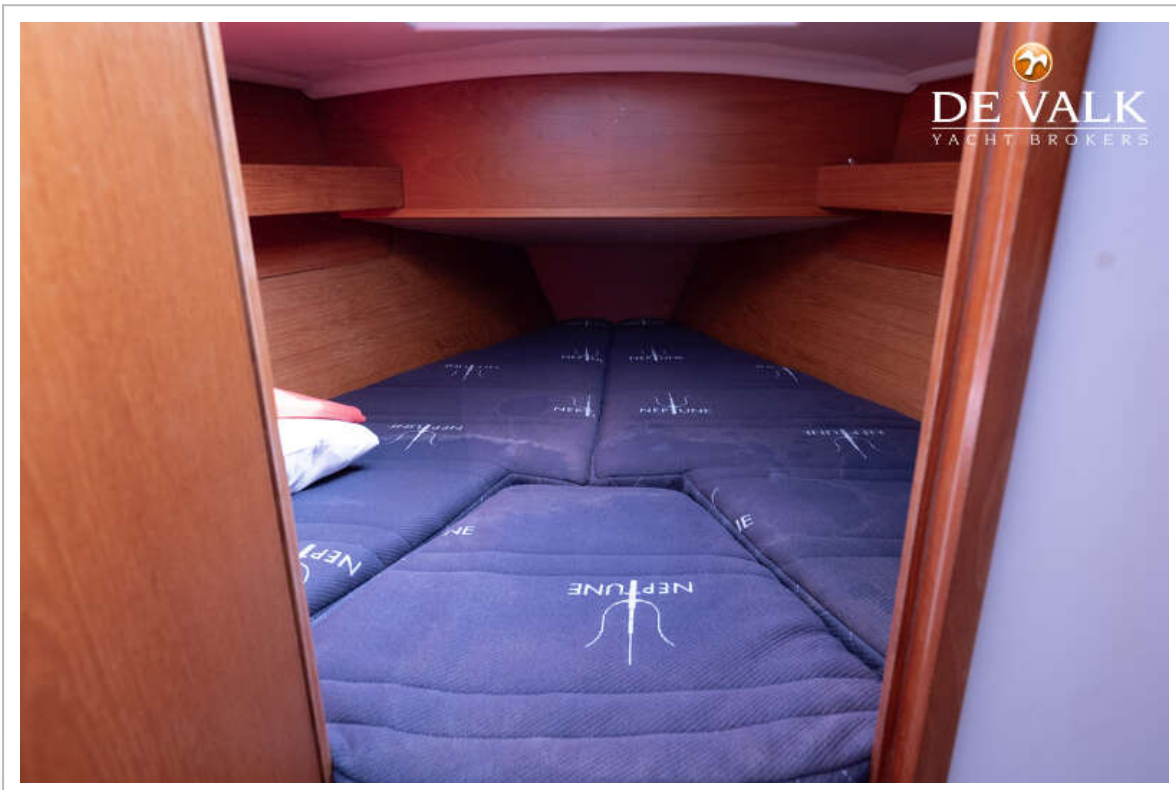




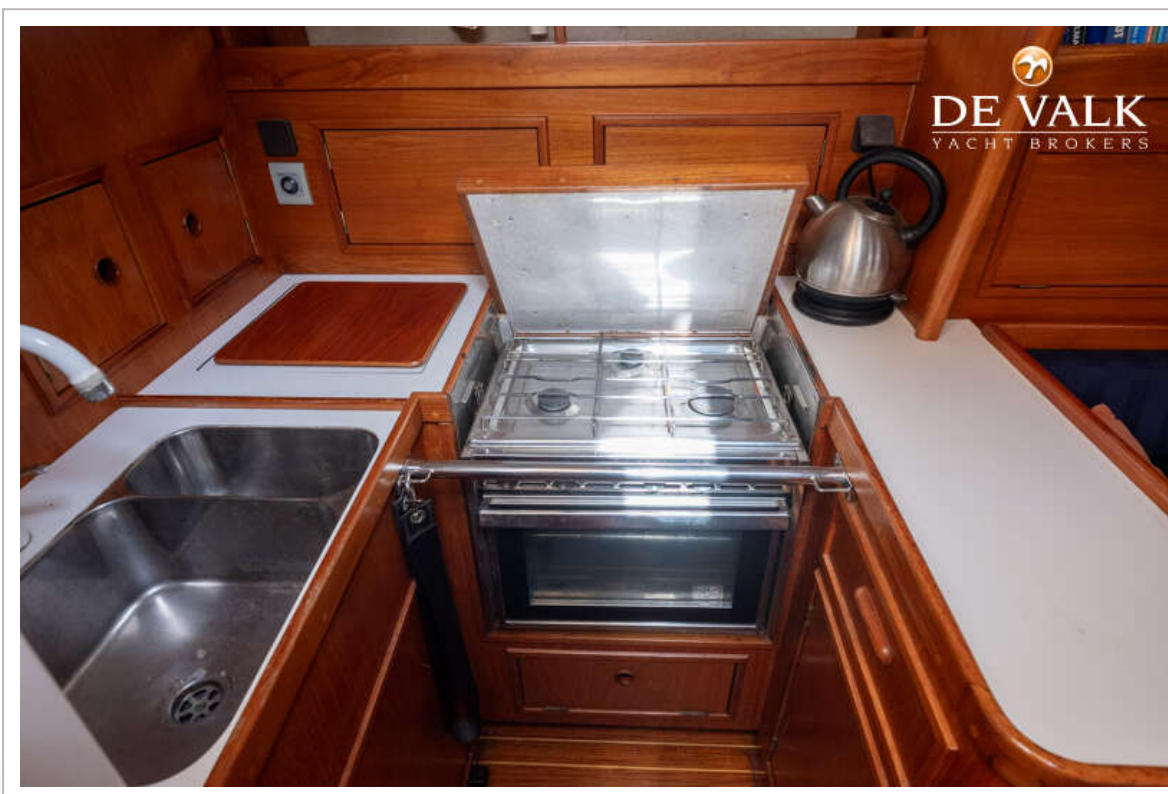
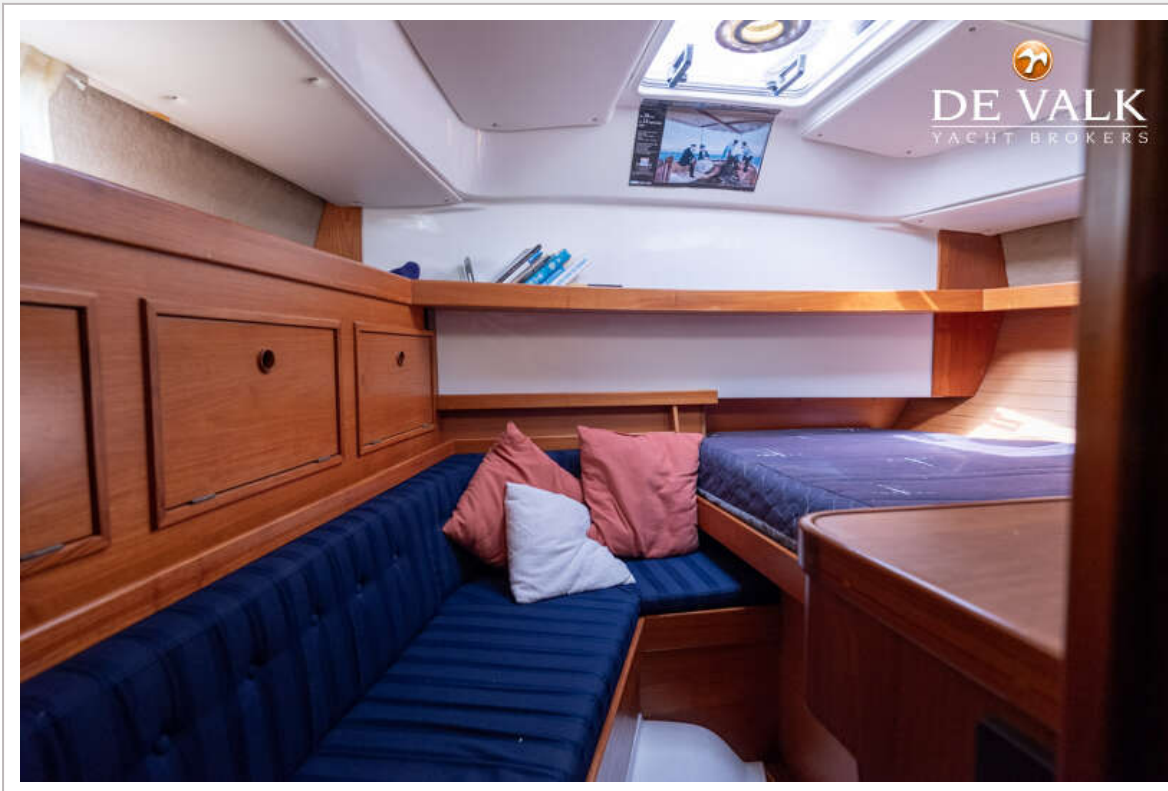
# CONTEST 38

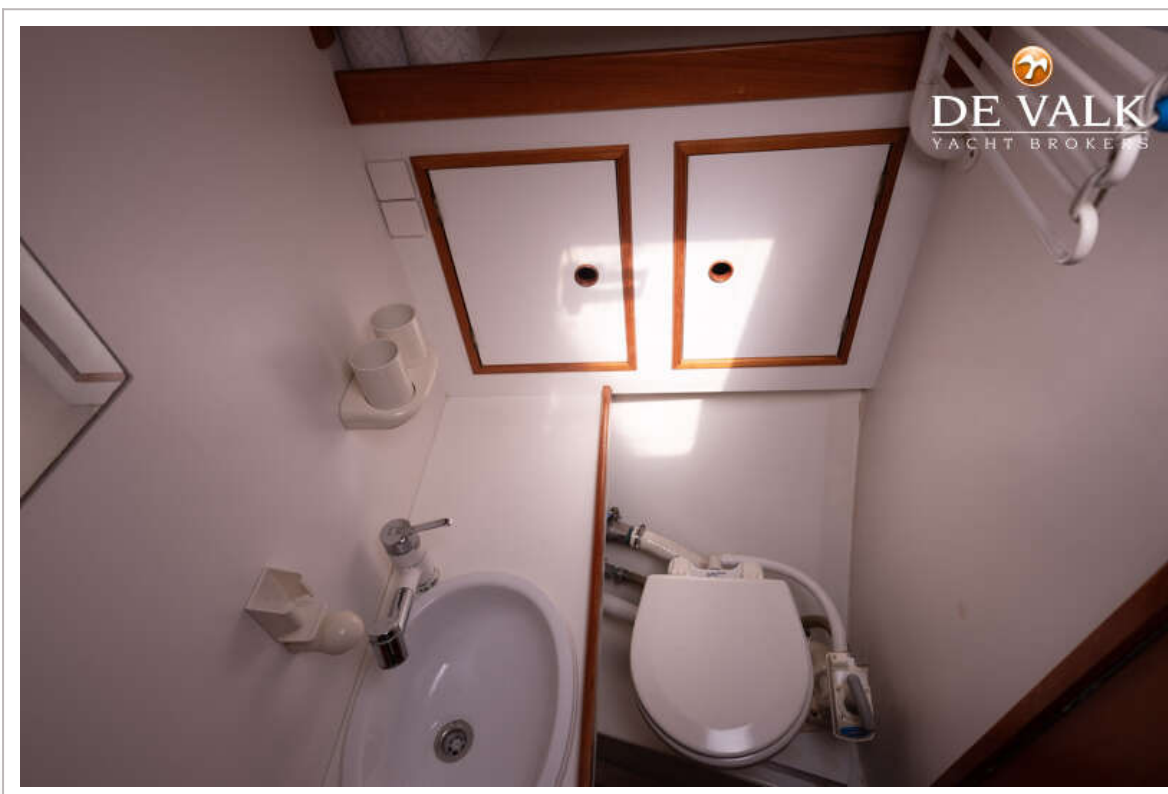
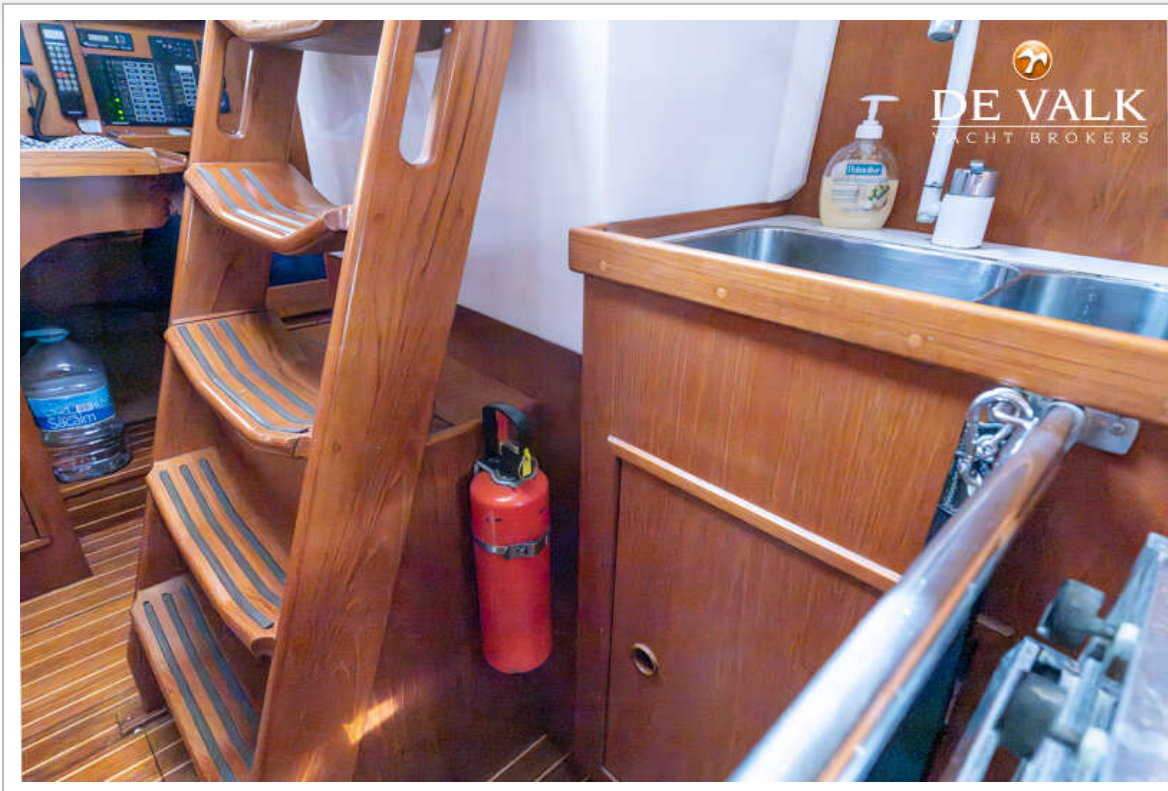


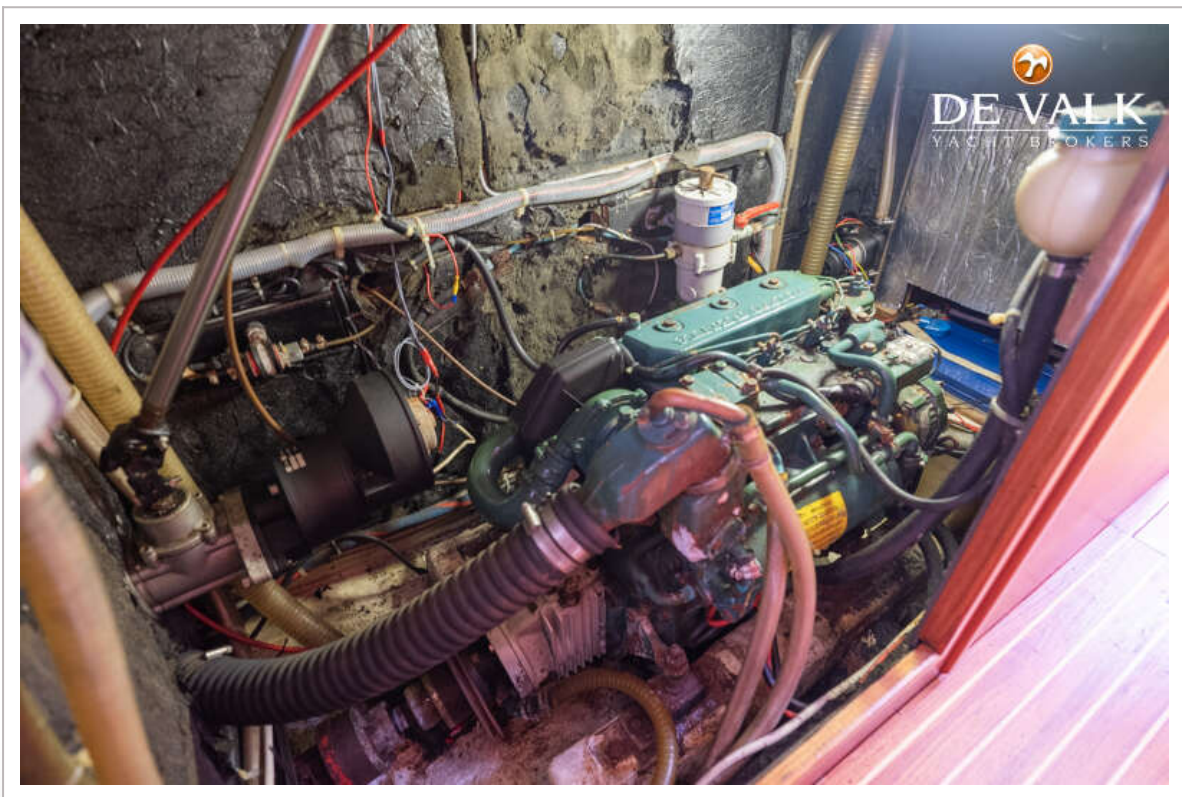






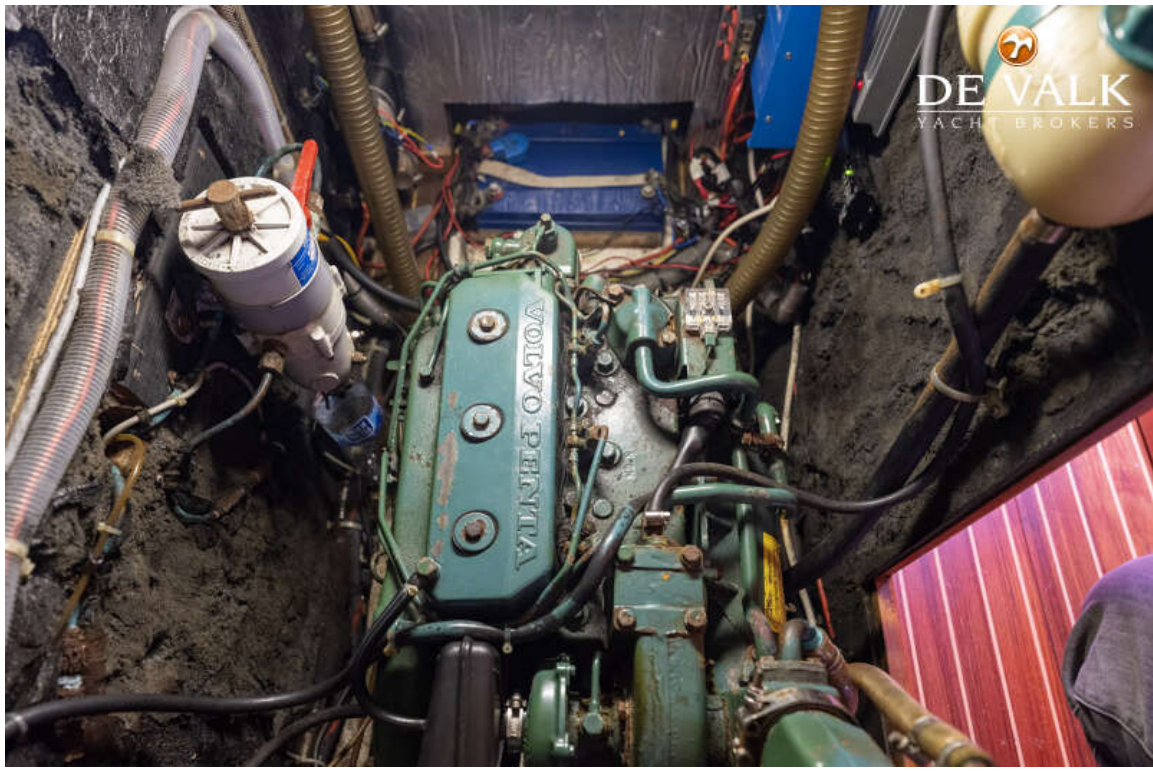




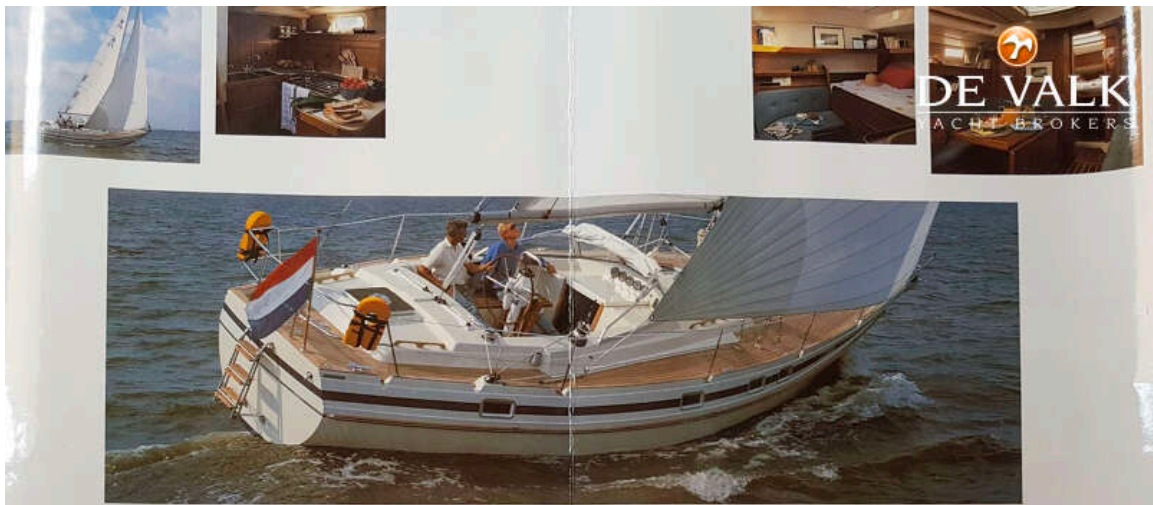




# CONTEST 38



DE VALK  
YACHT BROKERS



DE VALK  
YACHT BROKERS

## CONTEST 38S

### SPECIFICATIONS



© yachts are built  
by De Vloed Nieuw

length o.a.	11.36 m	37' - 3"	draft normal keel	1.95	6' - 5"	sloop	26.10 m <sup>2</sup>	281 sq.ft.	mainsail	26.10 m <sup>2</sup>	281 sq.ft.
length w.l.	9.30 m	30' - 6"	ballast	3445 kg	7595 lbs.	genoa I	50.70 m <sup>2</sup>	545 sq.ft.	mizzen	11.10 m <sup>2</sup>	119 sq.ft.
beam	3.66 m	12' - 0"	displacement	8440 kg	18605 lbs.	genoa II	37.20 m <sup>2</sup>	400 sq.ft.	genoa I	40.00 m <sup>2</sup>	429 sq.ft.
draft winged keel	1.40 m	4' - 6"	fuel	240 l	53 imp. gallons	spinnaker	115.00 m <sup>2</sup>	1236 sq.ft.	genoa II	31.20 m <sup>2</sup>	335 sq.ft.
ballast	3500 kg	7716 lbs.	fresh water	350 l	77 imp. gallons	mastheight			spinnaker	91.50 m <sup>2</sup>	984 sq.ft.
displacement	8490 kg	18716 lbs.	engine	Volvo Penta	32 kw / 43 hp.	above waterline	14.80 m	48' - 9"	mastheight		
									above waterline	14.80 m	48' - 9"



