



DE VALK
YACHT BROKERS



STEAM TUG 31M



DE VALK
YACHT BROKERS

STEAM TUG 31M

BROKER'S COMMENTS

This Steam-Tug 31M is built by J.P.Rennoldson and Son, South Shields in Newcastle, England in 1895. It's propulsion is entrusted to a triple expansion steam engine. Its state of conservation makes this Steam-Tug vessel very unique. The current owner of "Pietro Micca" bought her in 1995 and did a major refit with 40.000 hours spent to make sure she can be sailed for many more years. This Steam-Tug can be visited on appointment in Rome, Italy.

Joris van de Rijt

SPECIFICATIONS

Dimensions	31.10 x 6.40 x 3.60 (m)	Builder	Rennoldson & Sons Newcastle
Built	1895	Cabins	4
Material	Steel	Berths	18
Engine(s)	1 x Rennoldson & Son Triple EXPAN steam	Hp/Kw	500.00 (hp), 368.00 (kw)
Asking price	€ 445.000 (VAT Exempt)	Lying	Italy

CONTACT

Sales office	De Valk Sint Annaland	Telephone	+31 166 601 000
Address	Koelhuisweg 4 4697 RM Sint Annaland The Netherlands	E-mail	sintannaland@devalk.nl

DISCLAIMER

These particulars are given in good faith as supplied but cannot be guaranteed.



STEAM TUG 31M

GENERAL

Model	STEAM TUG 31M
Type	motor yacht
LOA (m)	31,10
Beam (m)	6,40
Draft (m)	3,60
Year built	1895
Builder	Rennoldson & Sons Newcastle
Country	United Kingdom
Designer	Rennoldson & Sons
Displacement (t)	335
Hull material	steel
Hull colour	black
Hull shape	round-bilged
Keel type	long keel
Superstructure material	steel
Rubbing strake	steel
Deck material	steel
Deck finish	non-skid paint
Superstructure deck finish	non-skid paint
Cockpit deck finish	non-skid paint
Window frame	copper
Window material	glass
Deckhatch	yes
Insulation	yes
Flybridge	yes
Fuel tank (litre)	2 x 20.000 water for boilers
Fuel tank 2 (litre)	1 x 40.000 BTZ heavy oil
Inside helm position	Steam-powered
Flybridge helm position	Steam-powered
Extra info	Wooden wheelhouse completely new installed



STEAM TUG 31M

ACCOMMODATION

Cabins	4
Berths	18
Interior	Classic
Aft deck	yes
Pilot house	yes
Saloon	yes
Dinette	yes
Galley	yes
Countertop	yes
Sink	yes
Cooker	yes
Oven	yes
Hot water system	yes
Water pressure system	electrical
Toilet	yes
Shower	yes

MACHINERY

No of engines	1
Make	Rennoldson & Son
Type	Triple EXPAN
HP	500
kW	368
Fuel	steam
Year installed	1895
Maximum speed (kn)	10
Range (nm)	2400
Drive	shaft
Gearbox	Steam-powered
Engine controls	manual



STEAM TUG 31M

Propeller type	fixed
Propeller blades	4
Propeller shaft material	steel
Electric bilge pump	5 x
Generator	Sunderland Forge & Engineering Steam powered 110V
Generator 2	Aifo Veco diesel powered 220V
Batteries	8 x
Battery charger	2 x
Solar panel	6 x
Shorepower	with cable
Extra info	Steam-powered deck winch
Extra info	Steam-powered alternator for charging the batteries

NAVIGATION

Compass	2 x
Depth sounder	yes
Log	yes
VHF	yes
Radar	yes
GPS	yes
Navigation lights	yes
Searchlight	On flybridge

EQUIPMENT

Sun awning	On front deck + aft deck
Anchor	2 x Hall
Anchor chain	yes
Windlass	Steam-powered
Dinghy	rigid hull 2 x
Sea railing	steel
Life raft	container 2 x



STEAM TUG 31M

Lifebuoy	yes
Fenders	yes
Mooring lines	yes
Extra info	Steam-powered winch for mooring lines

RIGGING

Rigging	schooner
Standing rigging	wire
Material mast	2 x steel
Main staysail	On furler
Mizzen	On furler
Jib	yes
Multifunctional winches	Steam-powered winches for sails



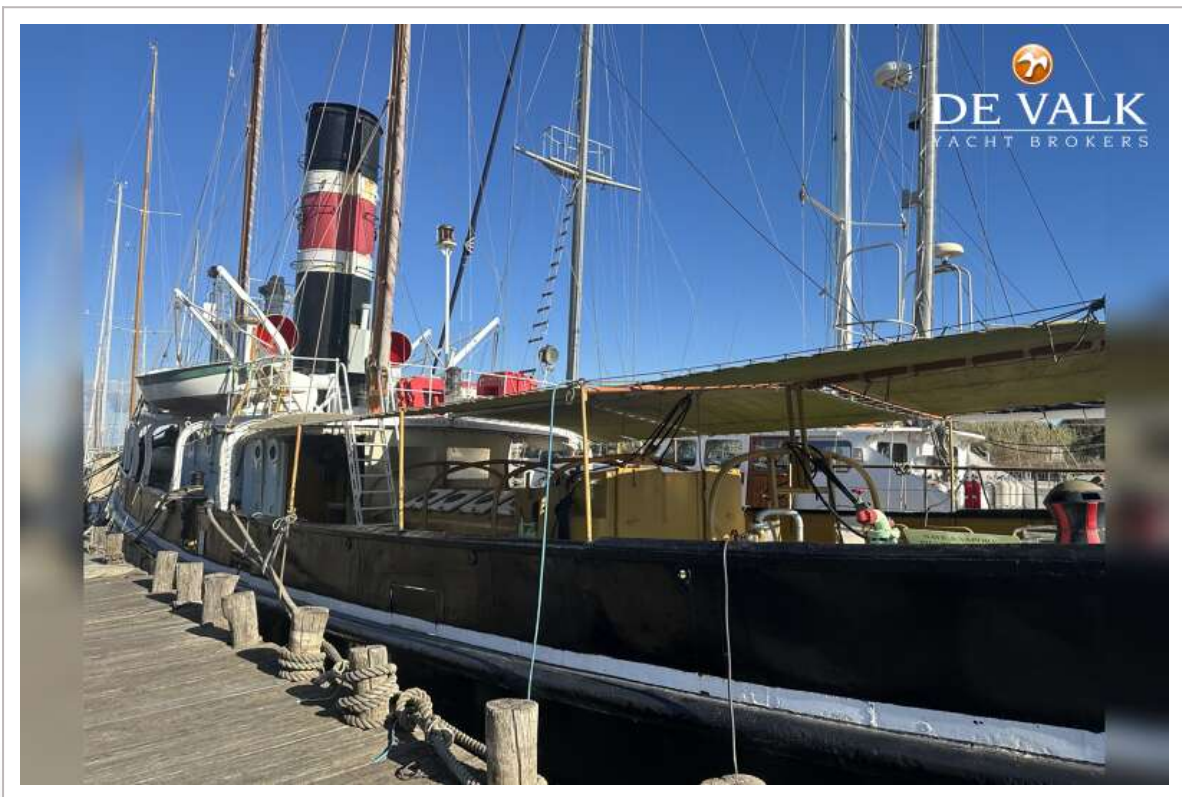
STEAM TUG 31M



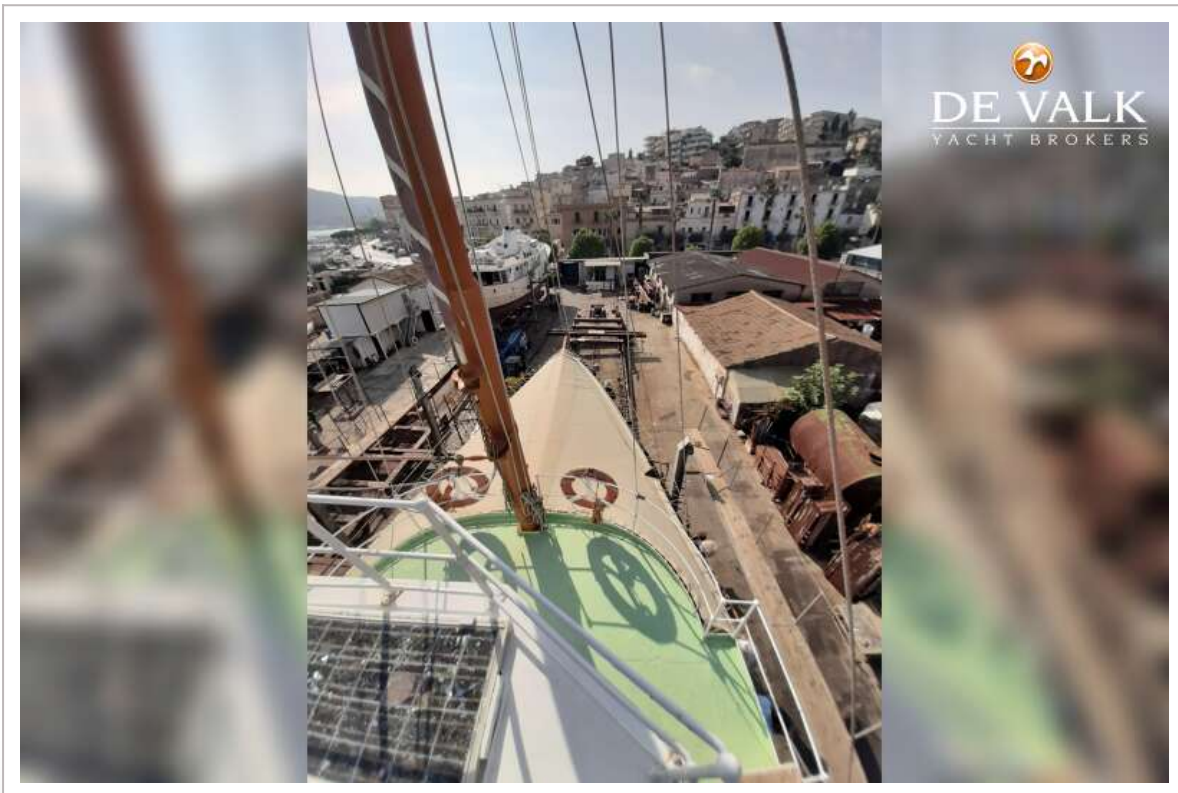
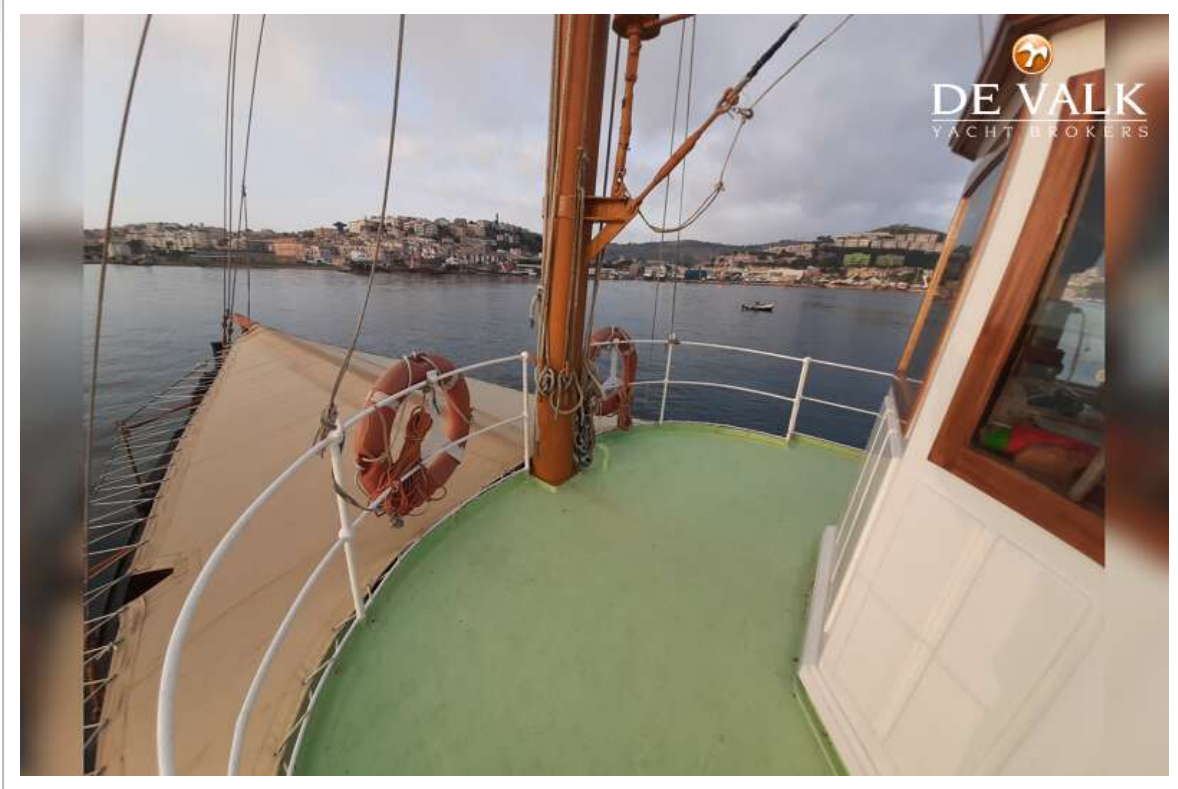
STEAM TUG 31M



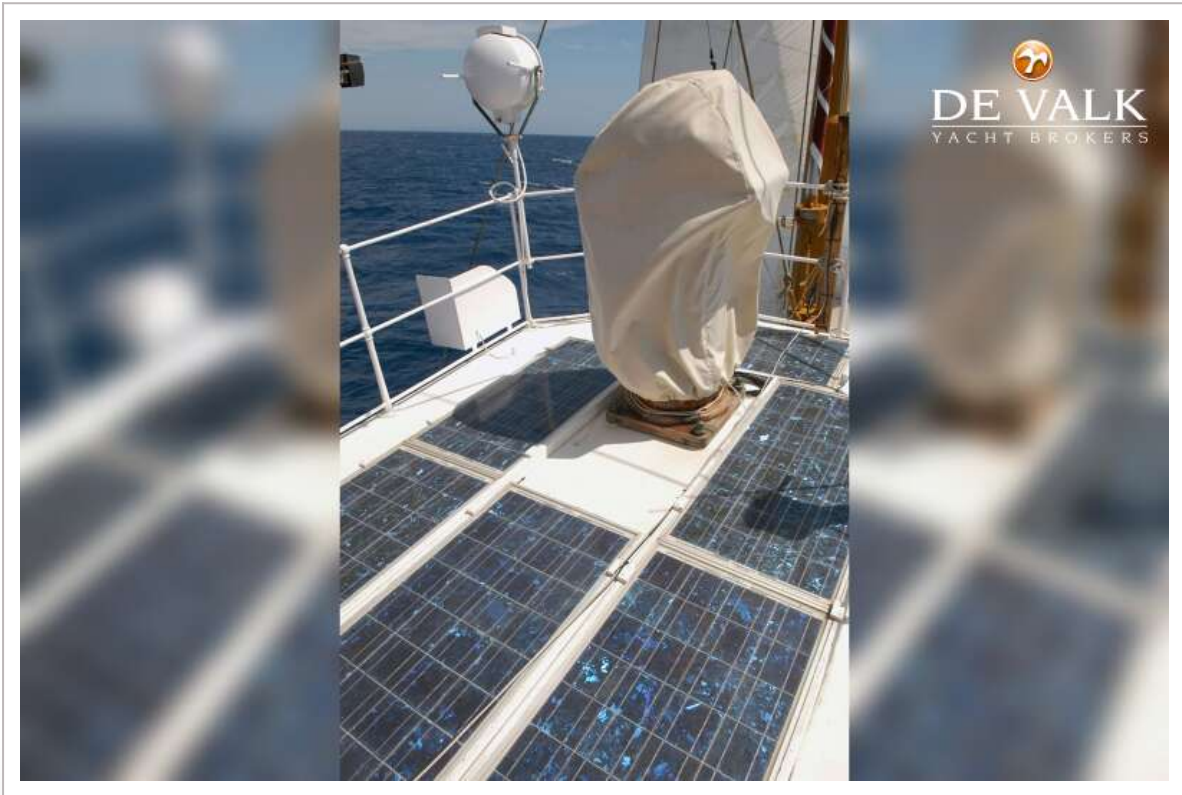
STEAM TUG 31M



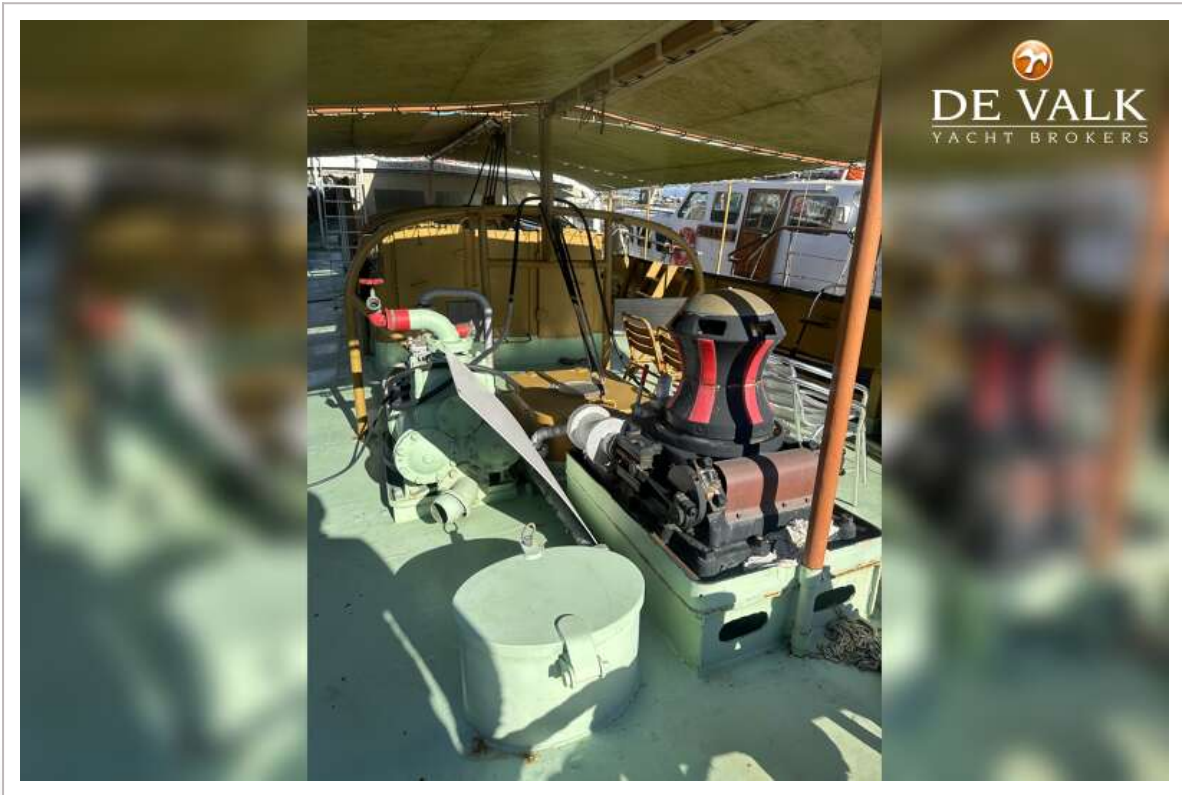
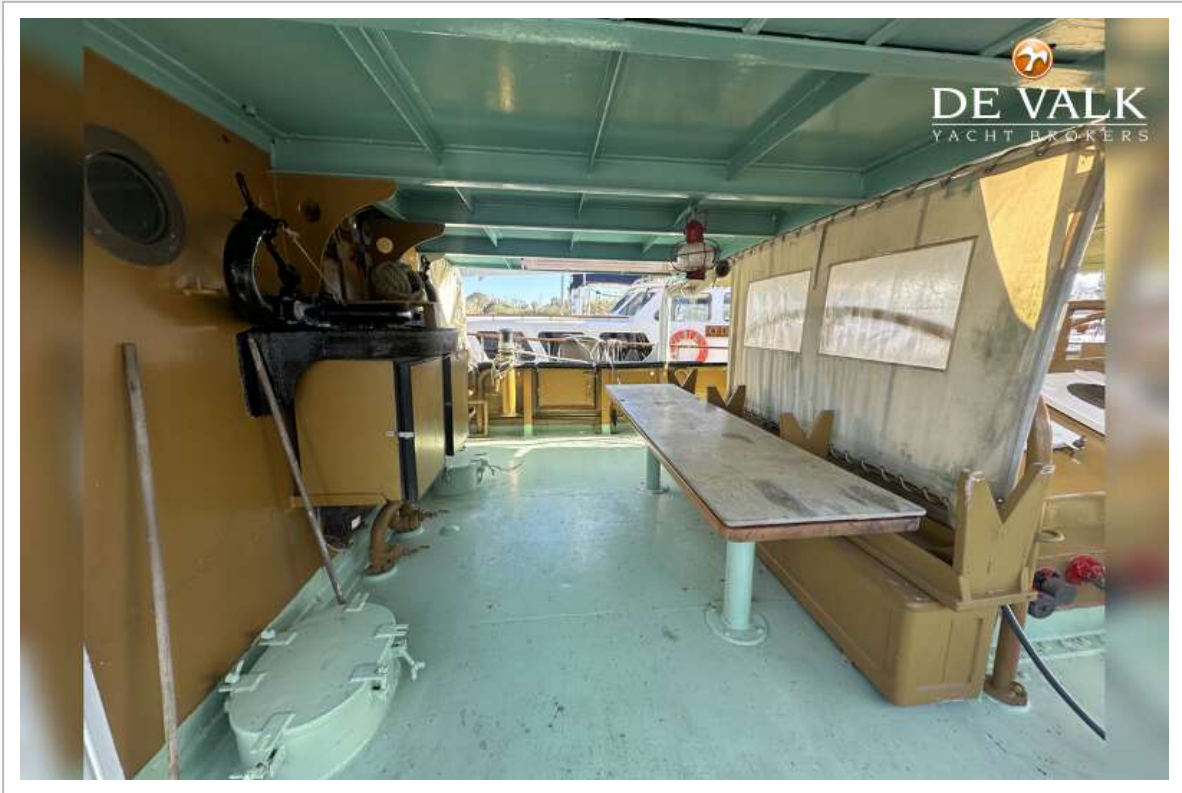
STEAM TUG 31M



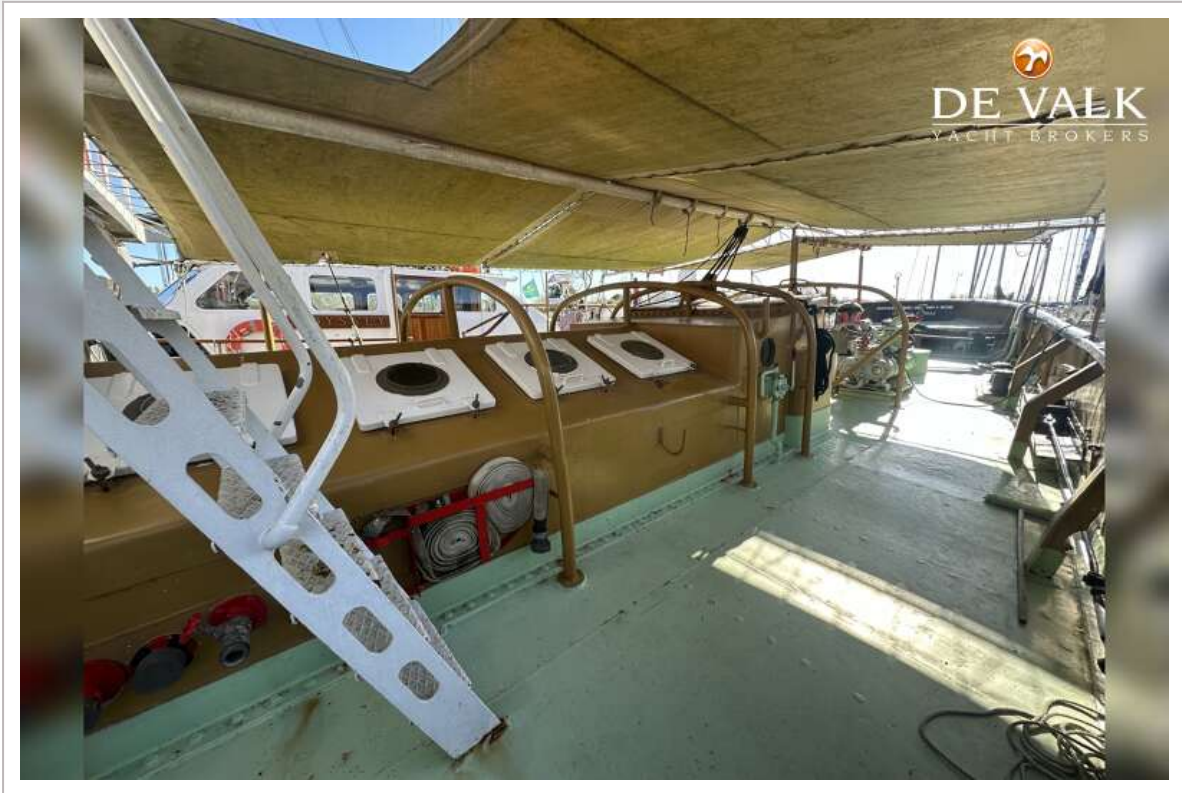
STEAM TUG 31M



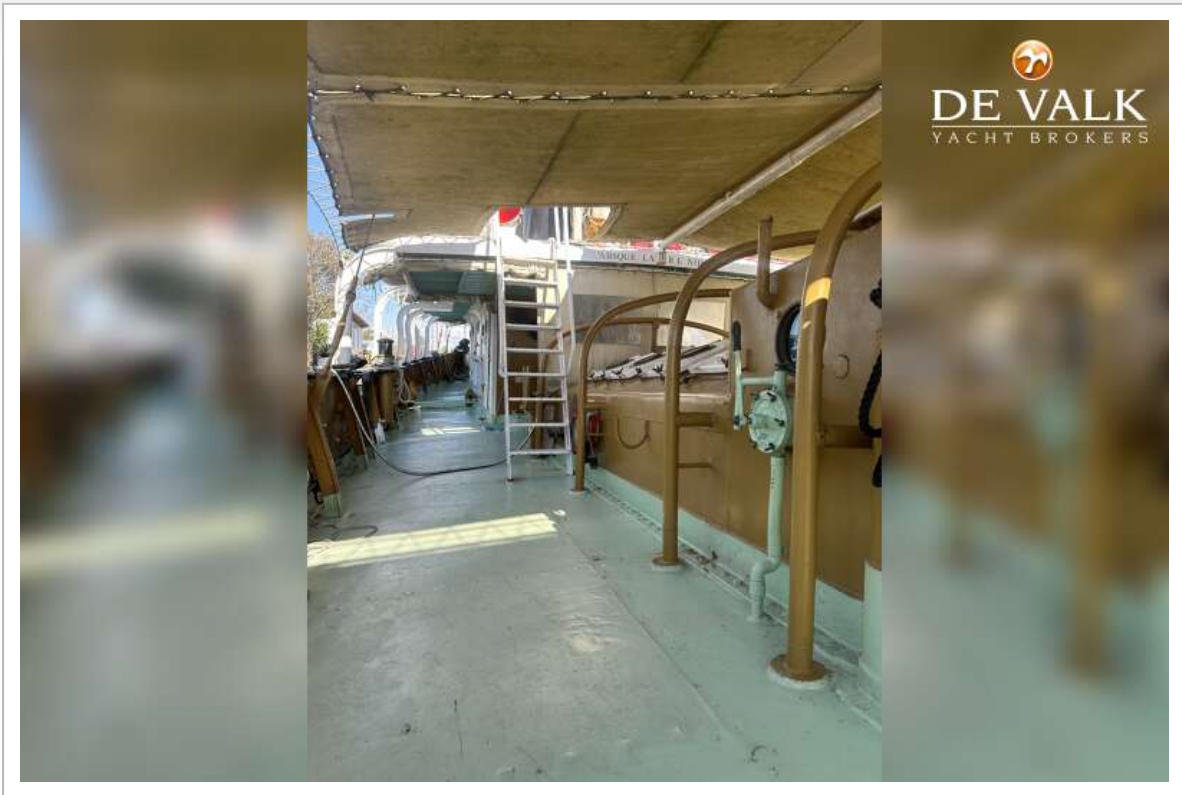
STEAM TUG 31M



STEAM TUG 31M



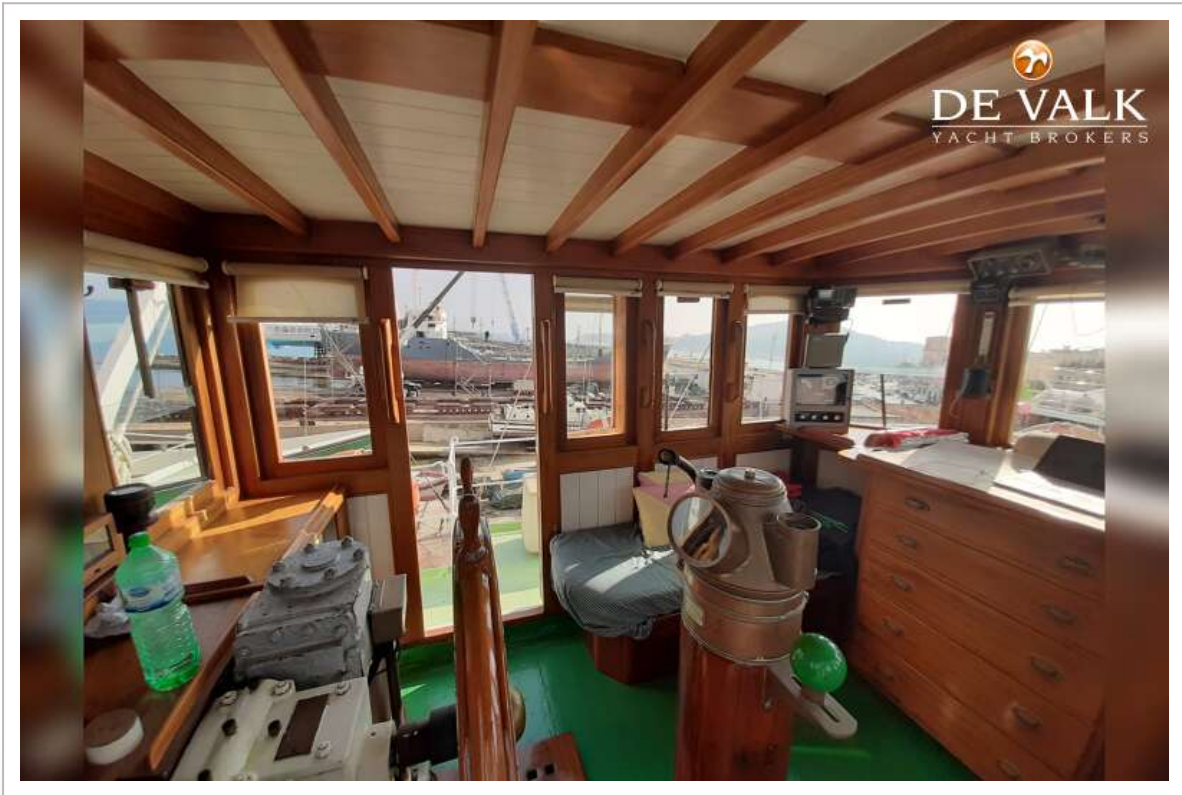
STEAM TUG 31M



STEAM TUG 31M



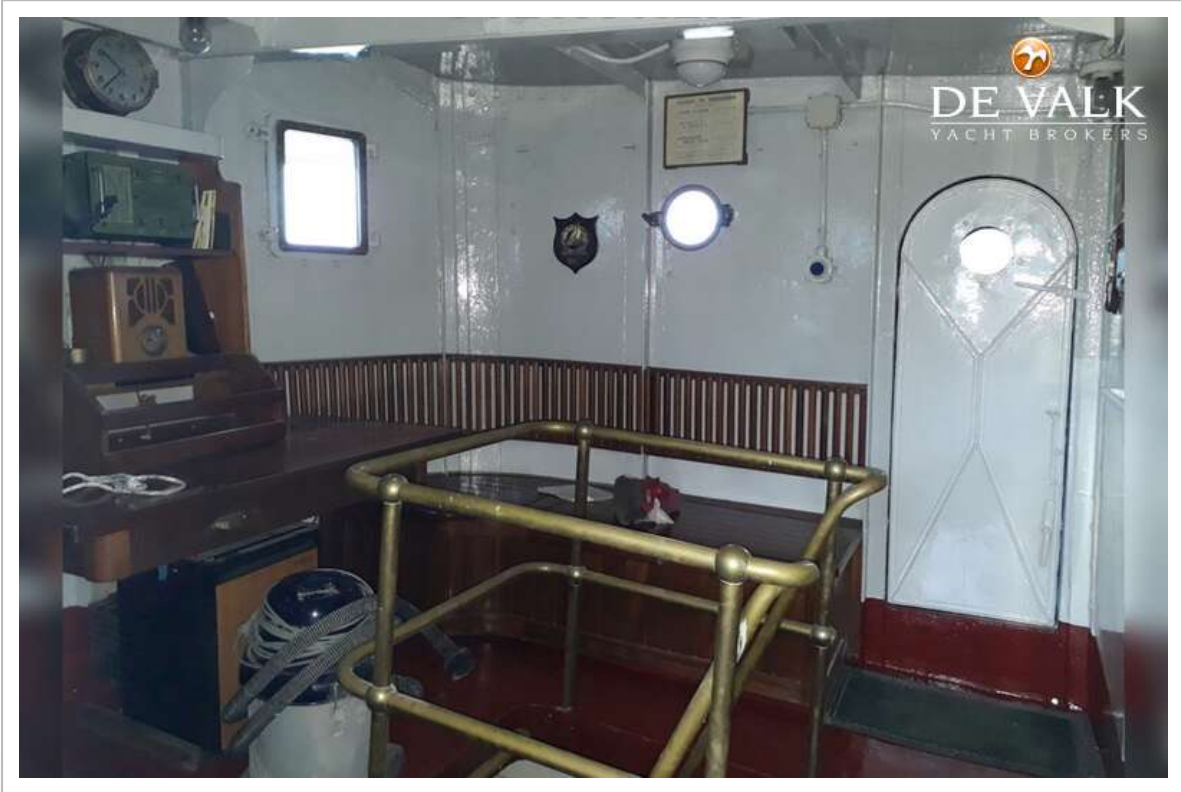
STEAM TUG 31M



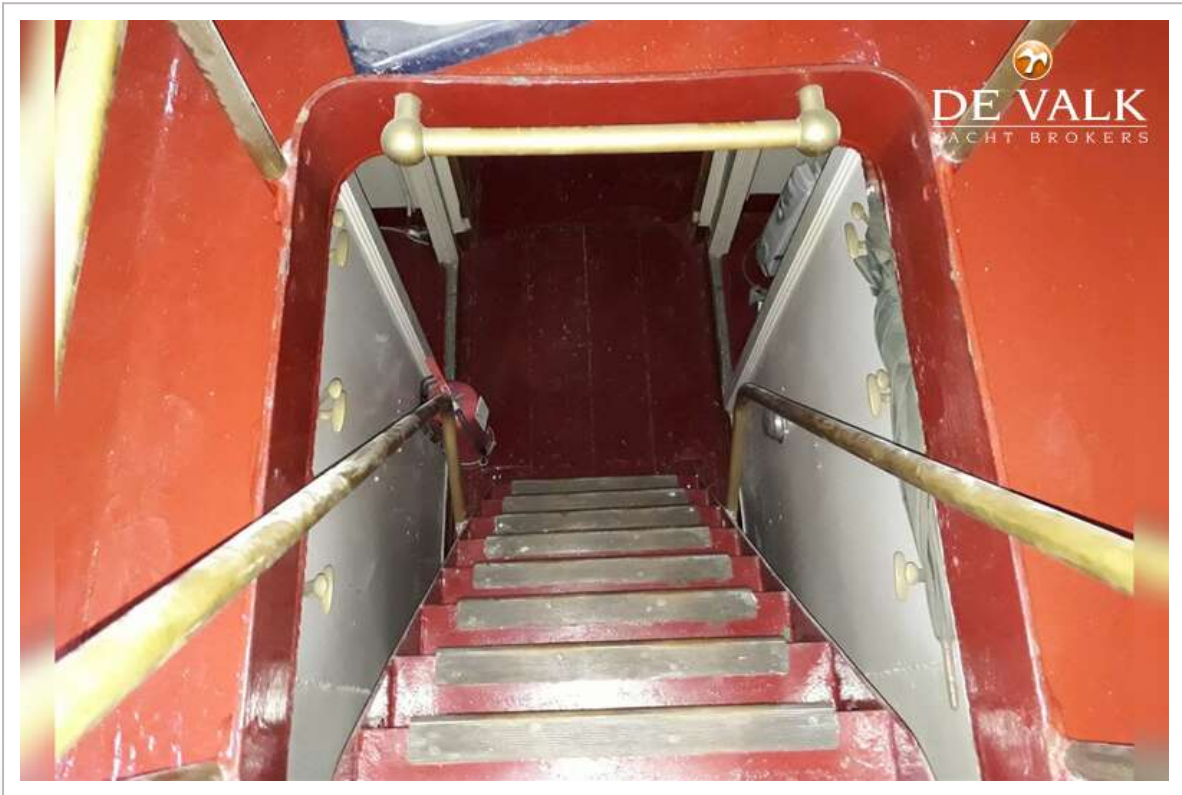
STEAM TUG 31M



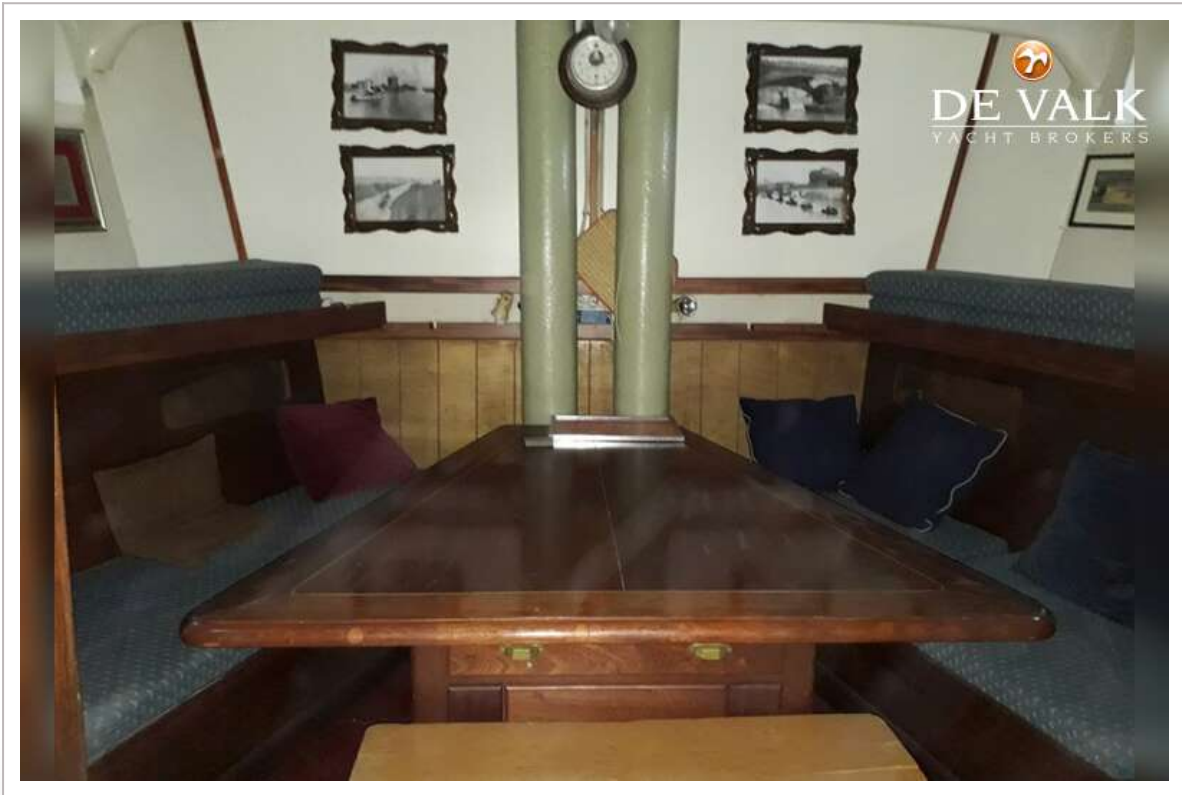
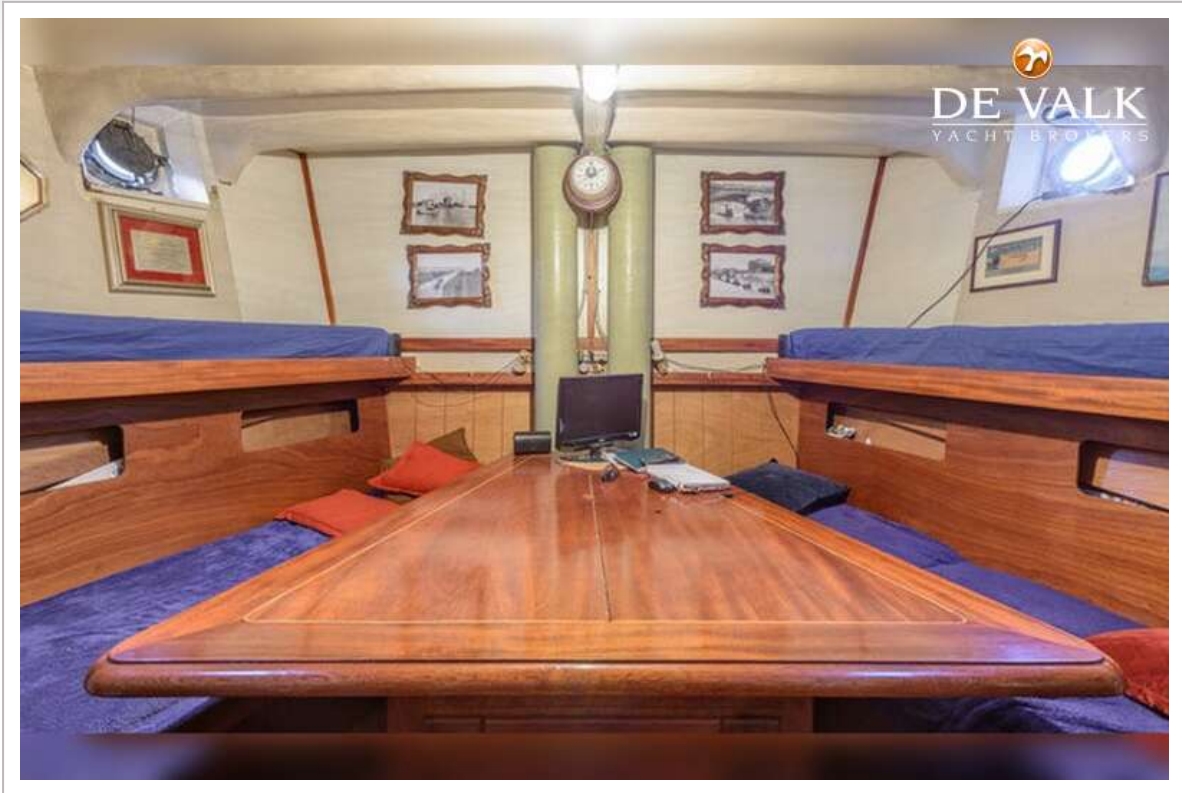
STEAM TUG 31M



STEAM TUG 31M



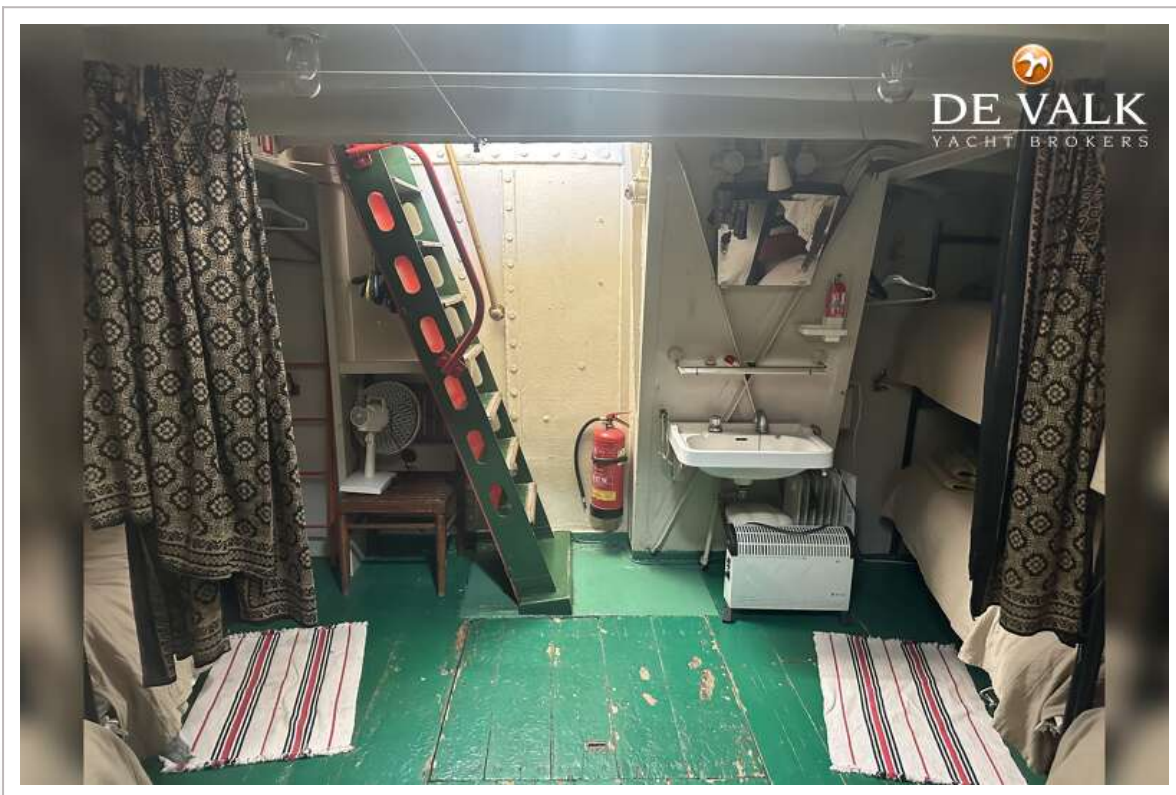
STEAM TUG 31M



STEAM TUG 31M



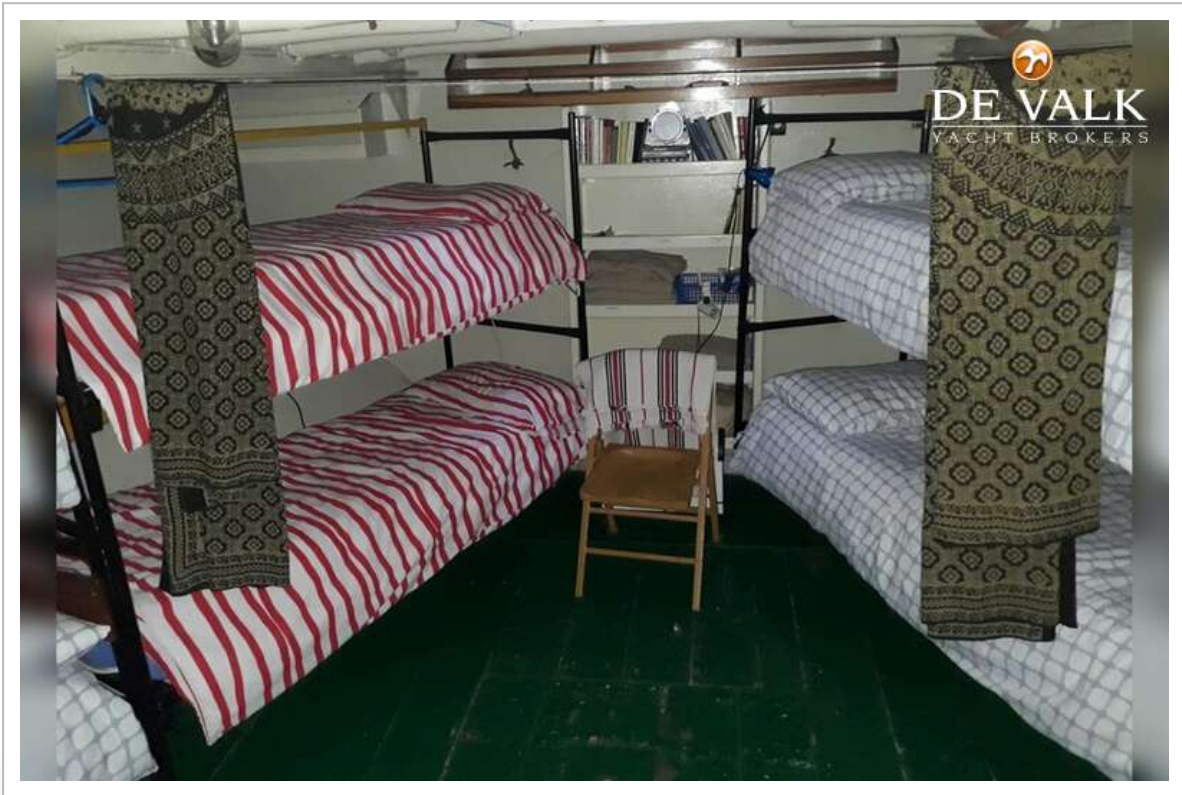
STEAM TUG 31M



STEAM TUG 31M



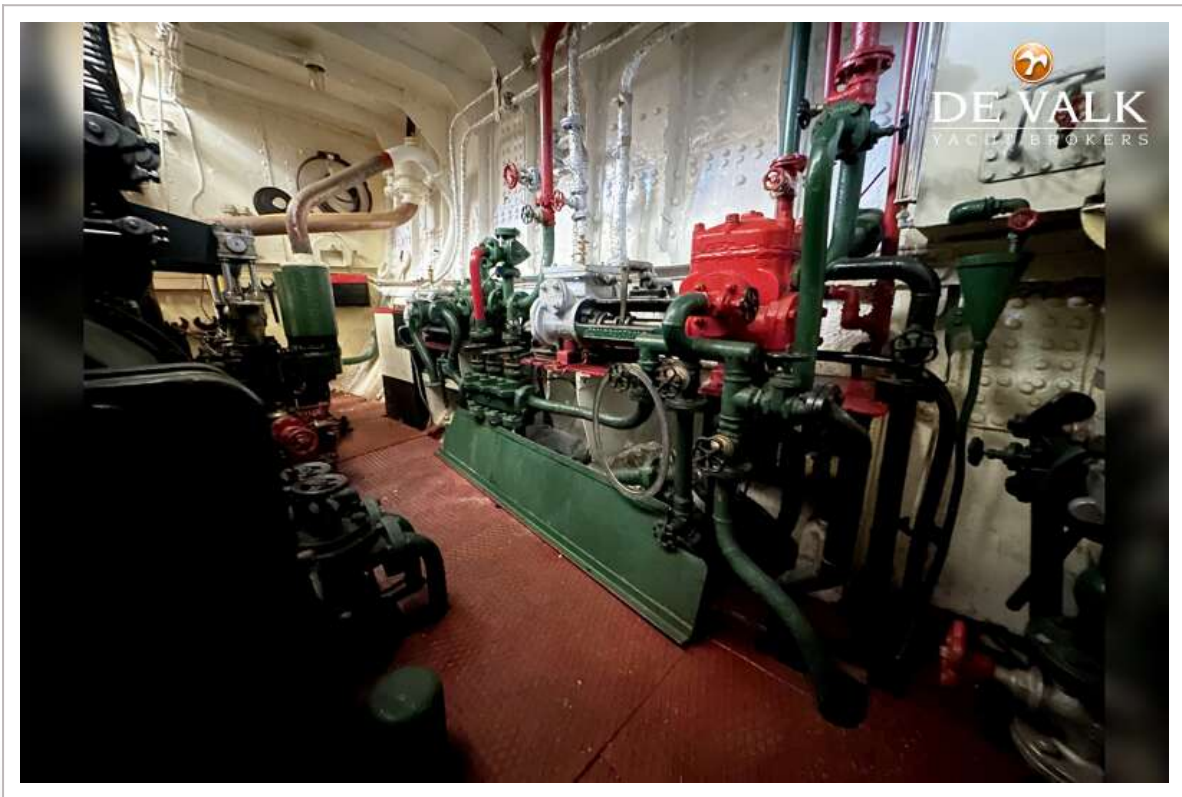
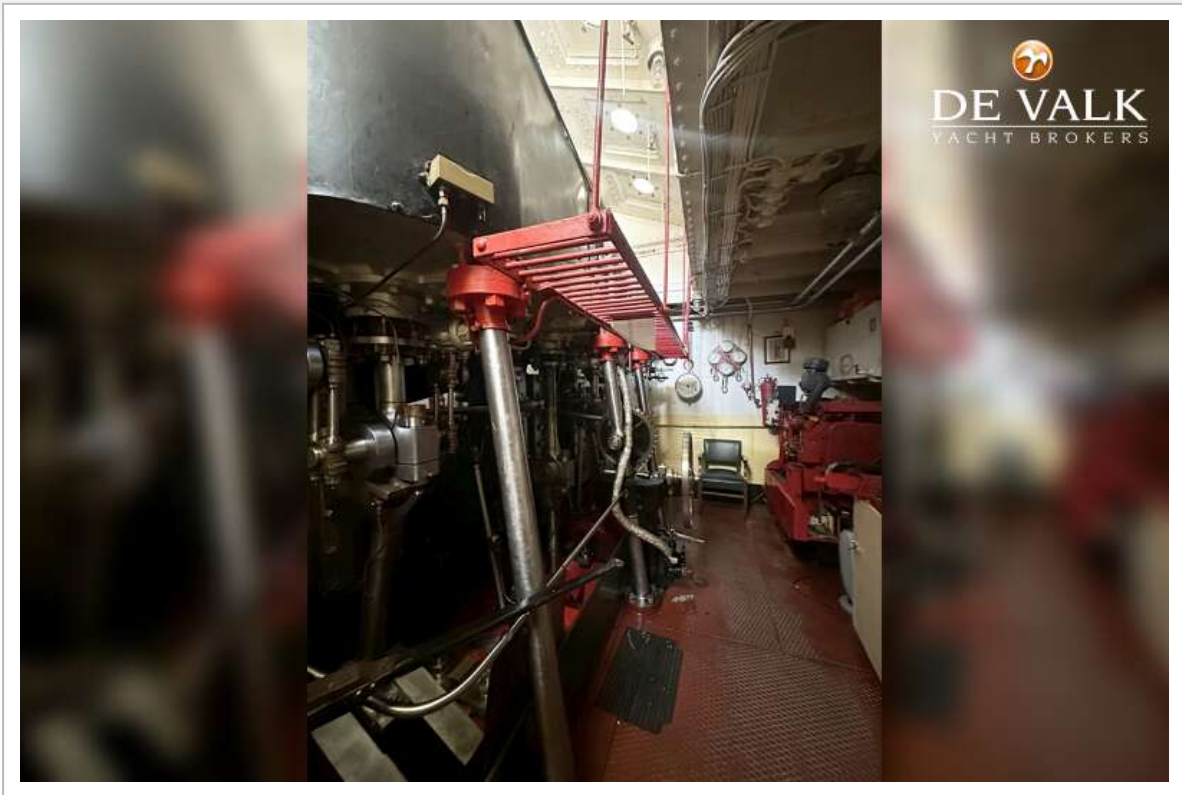
STEAM TUG 31M



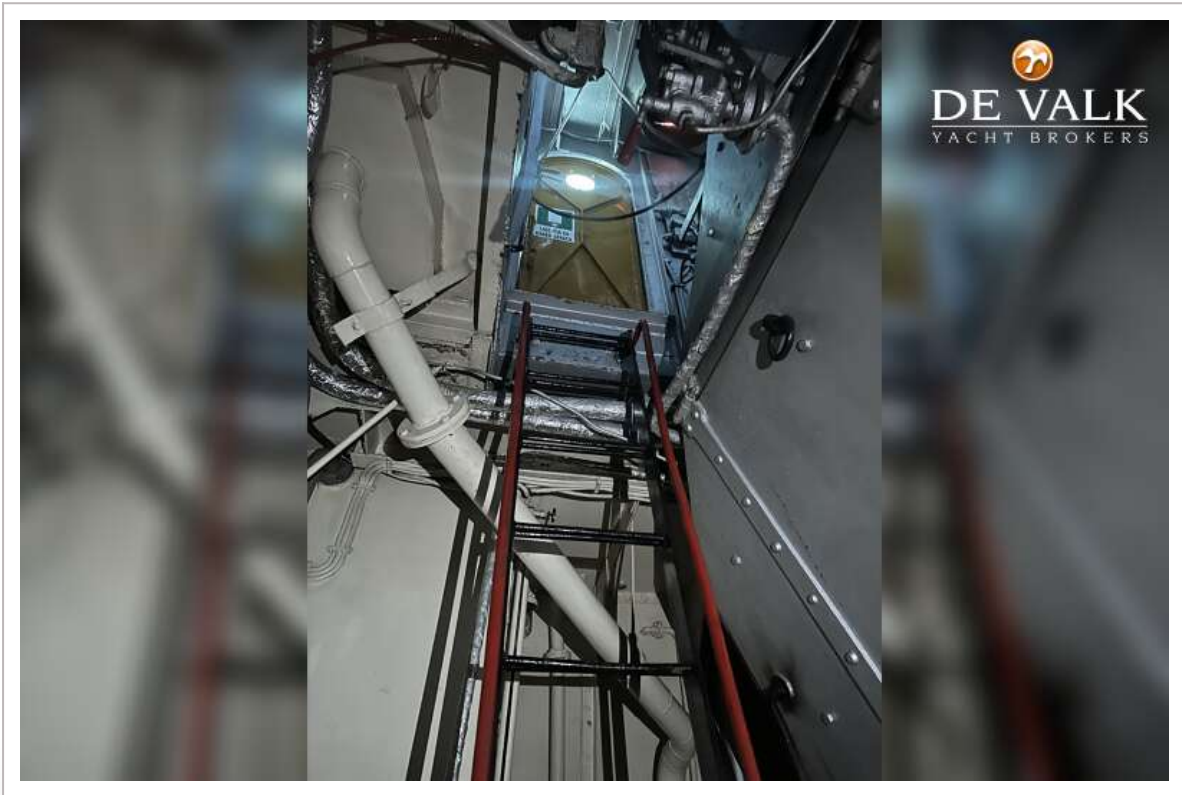
STEAM TUG 31M



STEAM TUG 31M



STEAM TUG 31M



STEAM TUG 31M

