



DE VALK  
YACHT BROKERS



## ALTENA 54 NG



DE VALK  
YACHT BROKERS

# ALTENA 54 NG

## BROKER'S COMMENTS

The Altena 54' NG (Next Generation) is an elegant yacht with a tough exterior. The hull and superstructure are made of steel. The beautiful lines create a modern look. The underwater hull, is multi-keeled, this emulates the round bilge. The yacht is built to Altena Yachting's standard standards. Only high-quality products and materials are used, guaranteeing high quality.

*Mark Hesselmans*

## SPECIFICATIONS

<b>Dimensions</b>	16.91 x 4.76 x 1.15 (m)	<b>Builder</b>	Altena Yachting
<b>Built</b>	2023	<b>Cabins</b>	2
<b>Material</b>	Steel	<b>Berths</b>	4
<b>Engine(s)</b>	2 x John Deere 4045TFM85 diesel	<b>Hp/Kw</b>	2 x 125.00 (hp), 92.00 (kw)
<b>Asking price</b>	€ 995.000 (VAT Not paid)	<b>Lying</b>	at sales office

## CONTACT

<b>Sales office</b>	De Valk Loosdrecht	<b>Telephone</b>	+31 35 582 90 30
<b>Address</b>	't Breukeleveense Meentje 6 1231 LM Loosdrecht / Wijdemeren The Netherlands	<b>E-mail</b>	loosdrecht@devalk.nl

## DISCLAIMER

These particulars are given in good faith as supplied but cannot be guaranteed.



# ALTENA 54 NG

## GENERAL

<b>Model</b>	ALTENA 54 NG
<b>Type</b>	motor yacht
<b>LOA (m)</b>	16,91
<b>Beam (m)</b>	4,76
<b>Draft (m)</b>	1,15
<b>Air draft (m)</b>	5,14
<b>Year built</b>	2023
<b>Builder</b>	Altena Yachting
<b>Country</b>	The Netherlands
<b>Designer</b>	Trimm Design
<b>Displacement (t)</b>	40
<b>CE norm</b>	B
<b>Hull material</b>	steel
<b>Hull colour</b>	grey
<b>Hull thickness (mm)</b>	6mm
<b>Hull shape</b>	multi hard chine
<b>Superstructure material</b>	steel
<b>Deck material</b>	steel
<b>Deck finish</b>	synthetic teak
<b>Cockpit deck finish</b>	synthetic teak
<b>Antifouling (year)</b>	2023
<b>Window frame</b>	steel
<b>Window material</b>	glass
<b>Deckhatch</b>	1x
<b>Portholes</b>	yes
<b>Radar arch</b>	collapsible
<b>Mast can be lowered</b>	electric
<b>Fuel tank (litre)</b>	steel 3500
<b>Level indicator (fuel tank)</b>	yes
<b>Freshwater tank (litre)</b>	steel 2000L



<b>Blackwater tank (litre)</b>	steel 1000L
<b>Level indicator (blackwater)</b>	yes
<b>Blackwater tank extraction</b>	deck extraction + pump
<b>Wheel steering</b>	hydraulic
<b>Inside helm position</b>	yes
<b>Extra info</b>	2x spud poles fwd and aft

## ACCOMMODATION

<b>Cabins</b>	2
<b>Berths</b>	4
<b>Interior</b>	mahogany
<b>Floor</b>	parquet
<b>Aft deck</b>	yes
<b>Pilot house</b>	yes
<b>Saloon</b>	yes
<b>Sliding roof</b>	electric
<b>Heating</b>	diesel ducted hot air Kabola KB20 centrale verwarming + vloerverwarming + aircondition
<b>Air-conditioning</b>	reverse cycle airco
<b>Dinette</b>	yes
<b>Opening door to aft deck</b>	yes
<b>Countertop</b>	Duropol
<b>Sink</b>	stainless steel
<b>Cooker</b>	electric Siemens 4-pits
<b>Oven</b>	AEG combi
<b>Extractor</b>	yes
<b>Fridge</b>	2x Isotherm
<b>Freezer</b>	Isotherm
<b>Hot water system</b>	220V or central heating
<b>Water pressure system</b>	electrical
<b>Dishwasher</b>	Atag



# ALTENA 54 NG

<b>Owners cabin</b>	double bed
<b>Bed length (m)</b>	2,00 x 1,80 M
<b>Wardrobe</b>	hanging/drawers/shelves
<b>Bathroom</b>	en suite
<b>Toilet</b>	en suite
<b>Toilet system</b>	electric
<b>Wash basin</b>	in the bathroom
<b>Shower</b>	en suite
<b>Guest cabin 1</b>	double bed
<b>Bed length (m)</b>	2,00 X 1,60 M
<b>Wardrobe</b>	hanging and shelves
<b>Bathroom</b>	en suite
<b>Toilet</b>	en suite
<b>Toilet system</b>	electric
<b>Wash basin</b>	in the bathroom
<b>Shower</b>	en suite
<b>Washing machine</b>	Siemens IQ300
<b>Dryer</b>	Siemens IQ500

## MACHINERY

<b>No of engines</b>	2
<b>Make</b>	John Deere
<b>Type</b>	4045TFM85
<b>HP</b>	125
<b>kW</b>	92
<b>Fuel</b>	diesel
<b>Engine hours</b>	22
<b>Engine cooling system</b>	freshwater heat exchanger
<b>Drive</b>	shaft
<b>Engine controls</b>	electrical Hydronautica
<b>Gearbox</b>	hydraulic ZF 45-1



# ALTENA 54 NG

<b>Bowthruster</b>	hydraulic Side-power HS 240
<b>Sternthruster</b>	hydraulic Side-power HS 240
<b>Exhaust</b>	watercooled
<b>Propeller type</b>	fixed
<b>Propeller shaft material</b>	stainless steel
<b>Shaft lubrication</b>	water
<b>Electric bilge pump</b>	yes
<b>Bilge alarm</b>	yes
<b>Generator</b>	Onan Marine generator 9.5kW MDKDM
<b>Start battery</b>	Optima RED
<b>Service battery</b>	3x Mastervolt
<b>Battery charger</b>	2 x Mastervolt Mass Combi Pro 24V / 3500W / 100Amp
<b>Inverter</b>	2 x Mastervolt Mass Combi Pro 24V / 3500W / 100Amp
<b>Shorepower</b>	with cable
<b>Stabilizers</b>	No, but preparations are made

## NAVIGATION

<b>Electric compass</b>	Yachtcontrol
<b>Multi control display</b>	2x Yachtcontrol
<b>Depth sounder/log</b>	Yachtcontrol
<b>VHF</b>	2 x Simrad HS100
<b>Autopilot</b>	Simrad A2004
<b>Rudder angle indicator</b>	Yachtcontrol
<b>Plotter/GPS</b>	Yachtcontrol
<b>Camera</b>	Rear +engineroom
<b>Navigation lights</b>	yes

## EQUIPMENT

<b>Fixed windscreen</b>	yes
<b>Cockpit table</b>	yes
<b>Bathing platform</b>	yes



<b>Boarding ladder</b>	yes
<b>Windlass</b>	electrical
<b>Sea railing</b>	stainless steel
<b>Railing side opening gates</b>	2x
<b>Wiper</b>	2x
<b>Horn</b>	yes
<b>Fenders</b>	yes
<b>Mooring lines</b>	yes
<b>Surround Sound System</b>	Fusion MS-RA770
<b>Cockpit speakers</b>	yes
<b>Speakers in salon</b>	yes
<b>Speakers in cabin</b>	yes





# ALTENA 54 NG





# ALTENA 54 NG



# ALTENA 54 NG





# ALTENA 54 NG

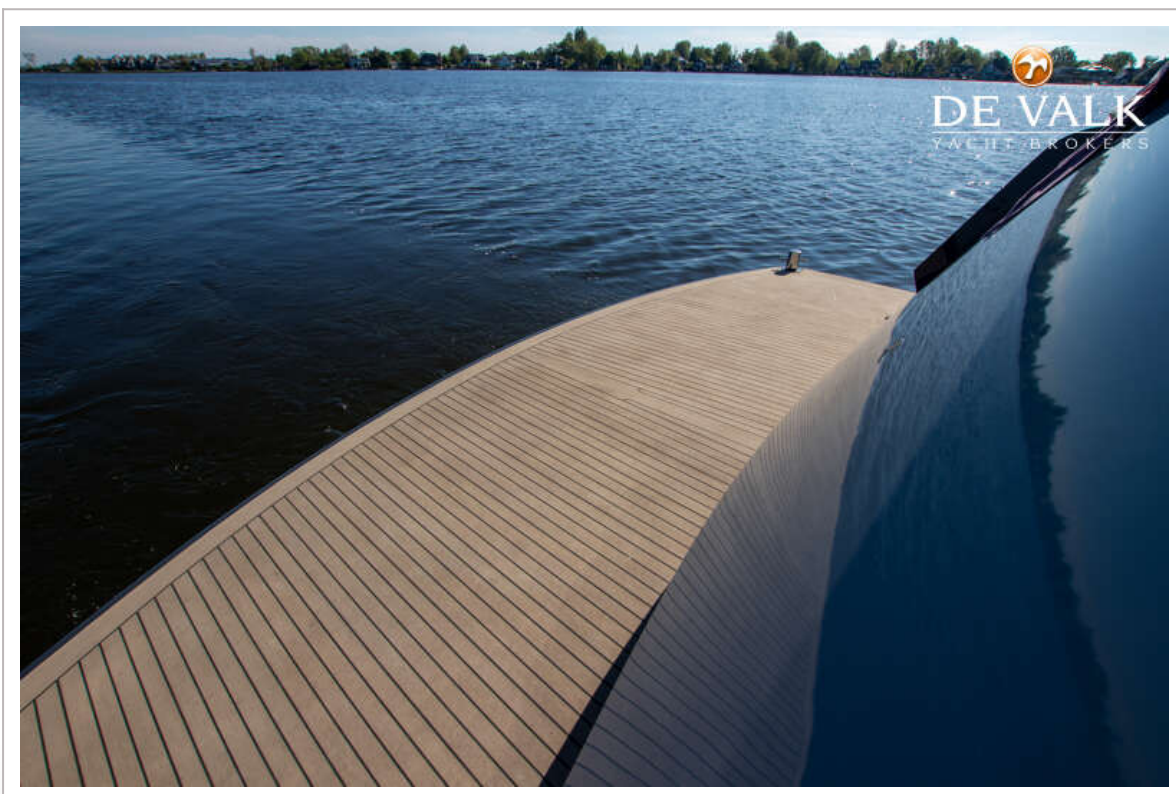


# ALTENA 54 NG





# ALTENA 54 NG



ALTENA 54 NG

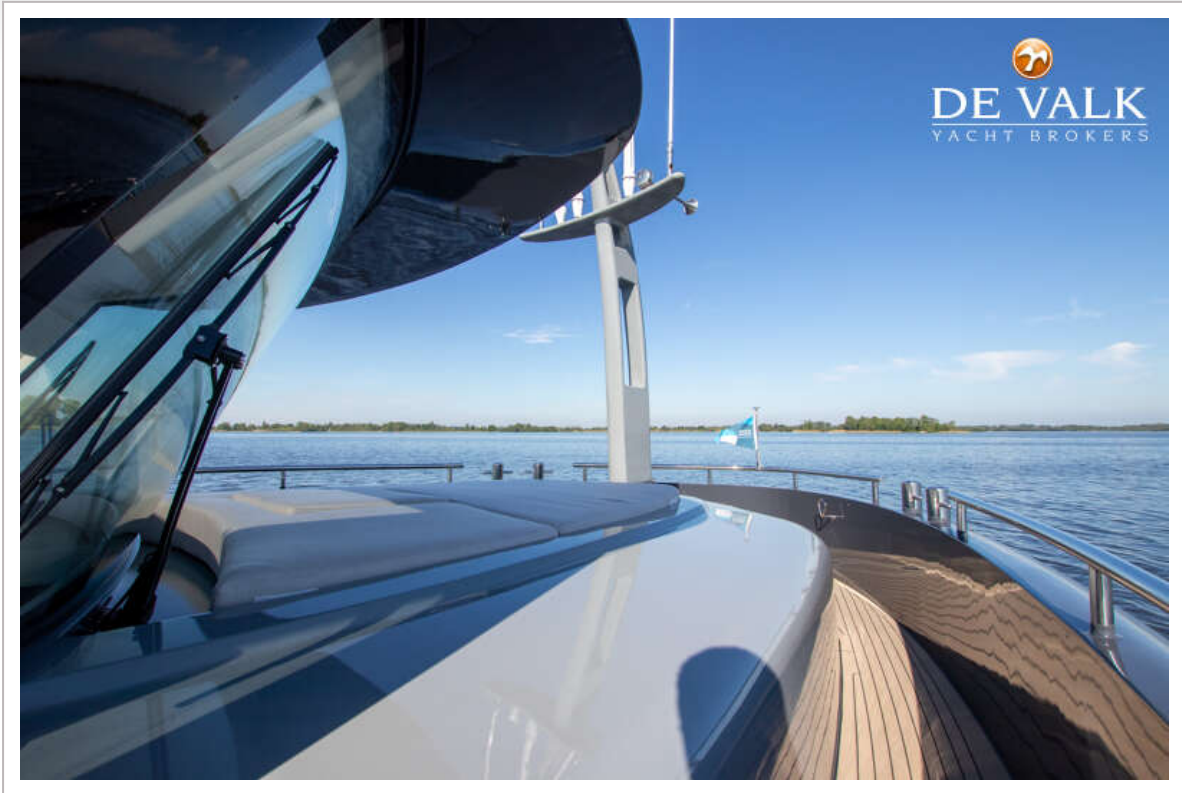




ALTENA 54 NG



ALTENA 54 NG

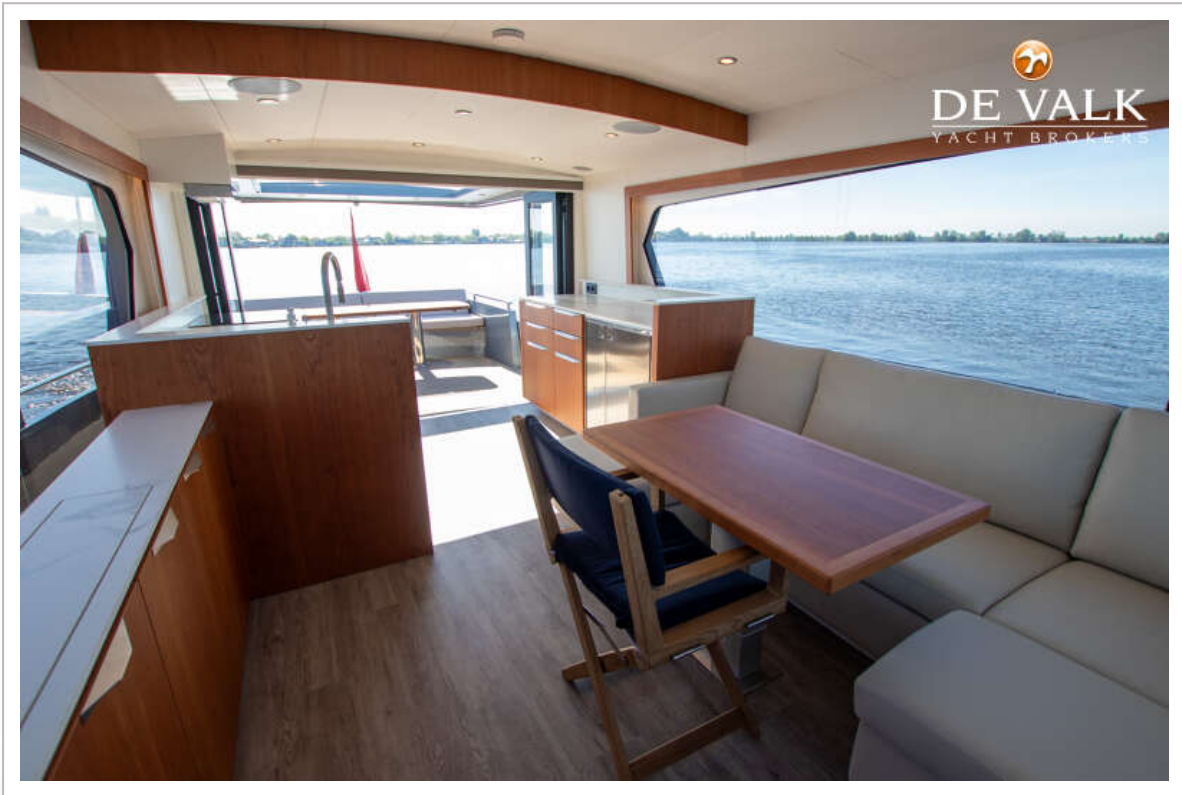
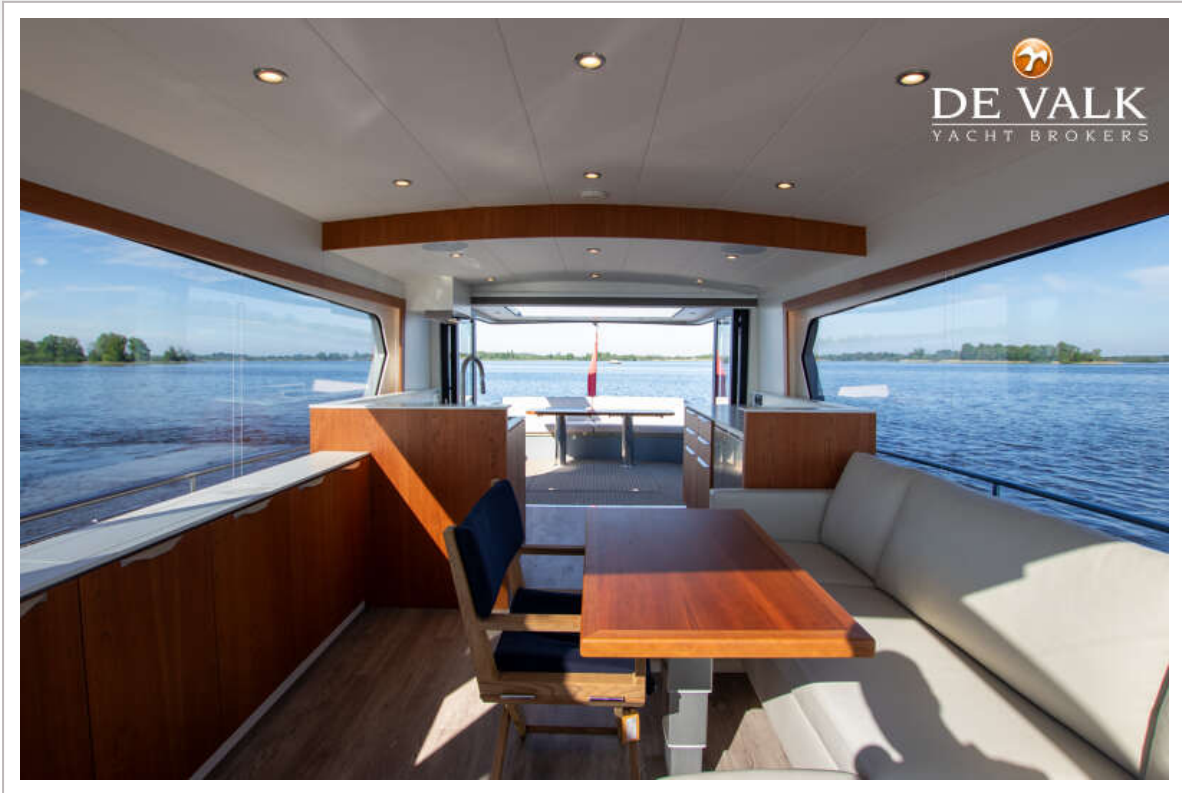


# ALTENA 54 NG

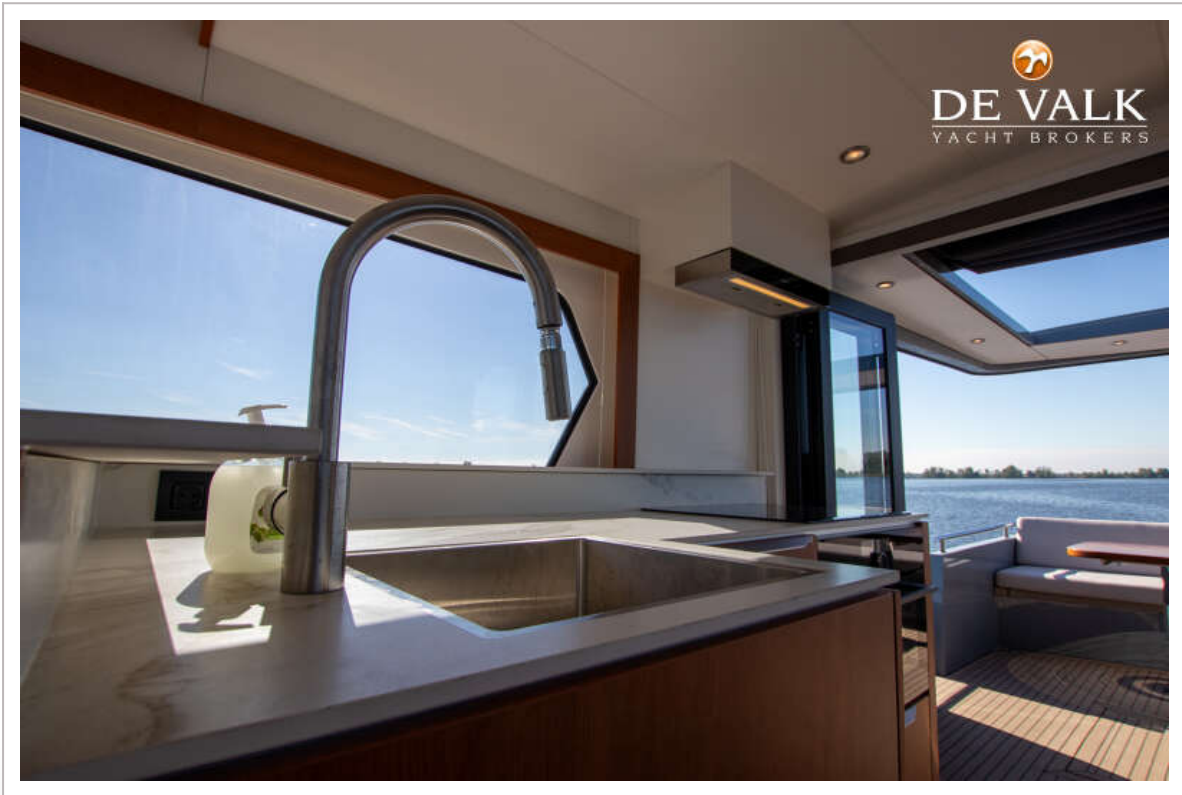
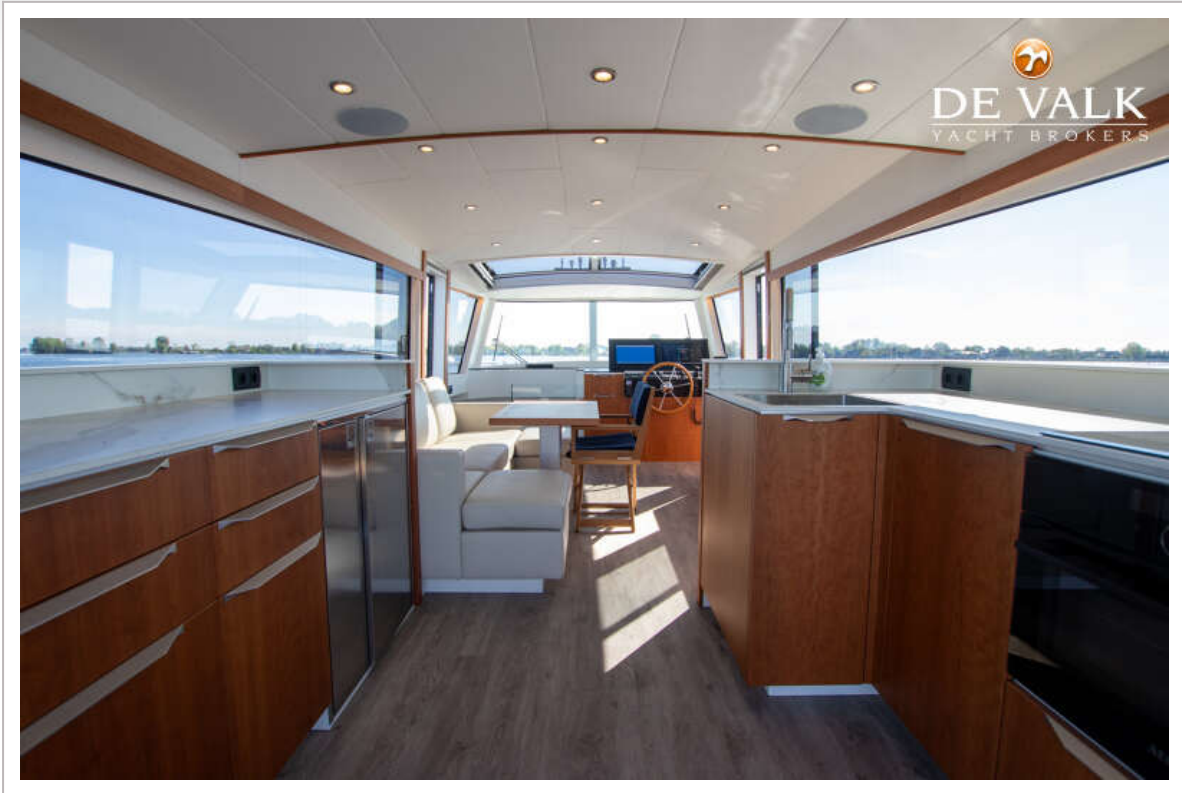




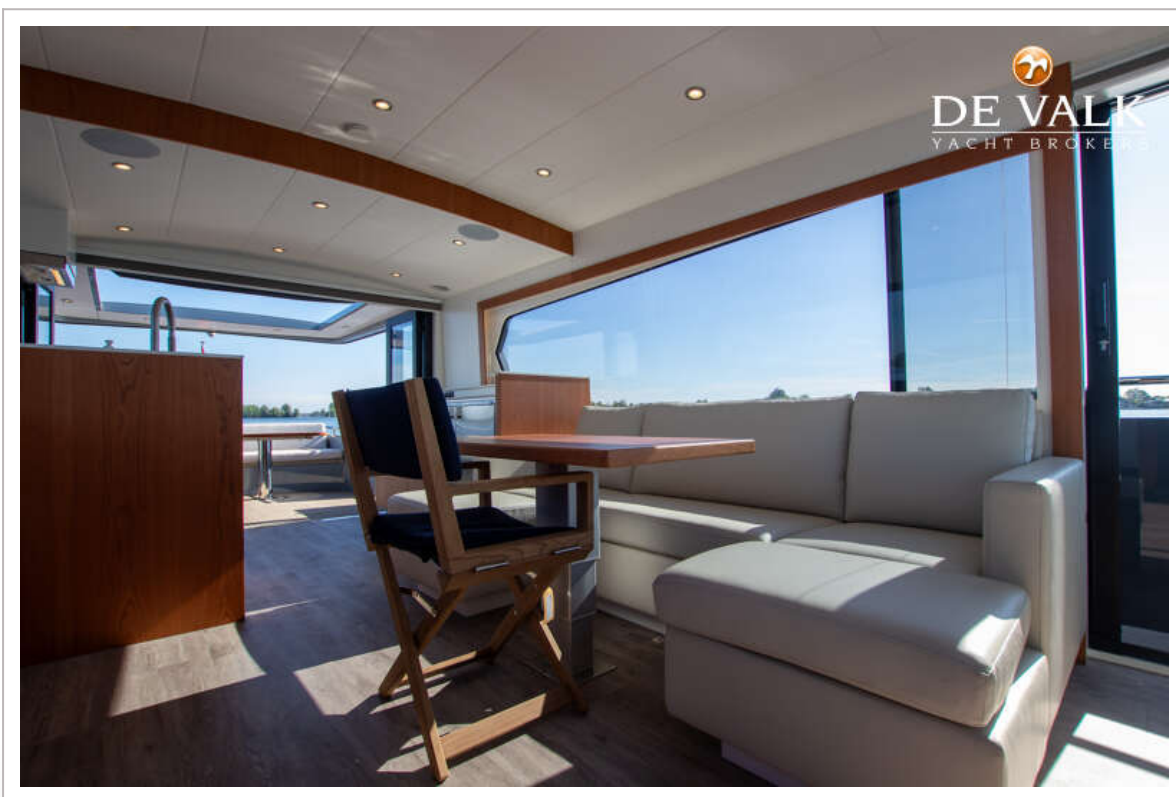
ALTENA 54 NG



ALTENA 54 NG

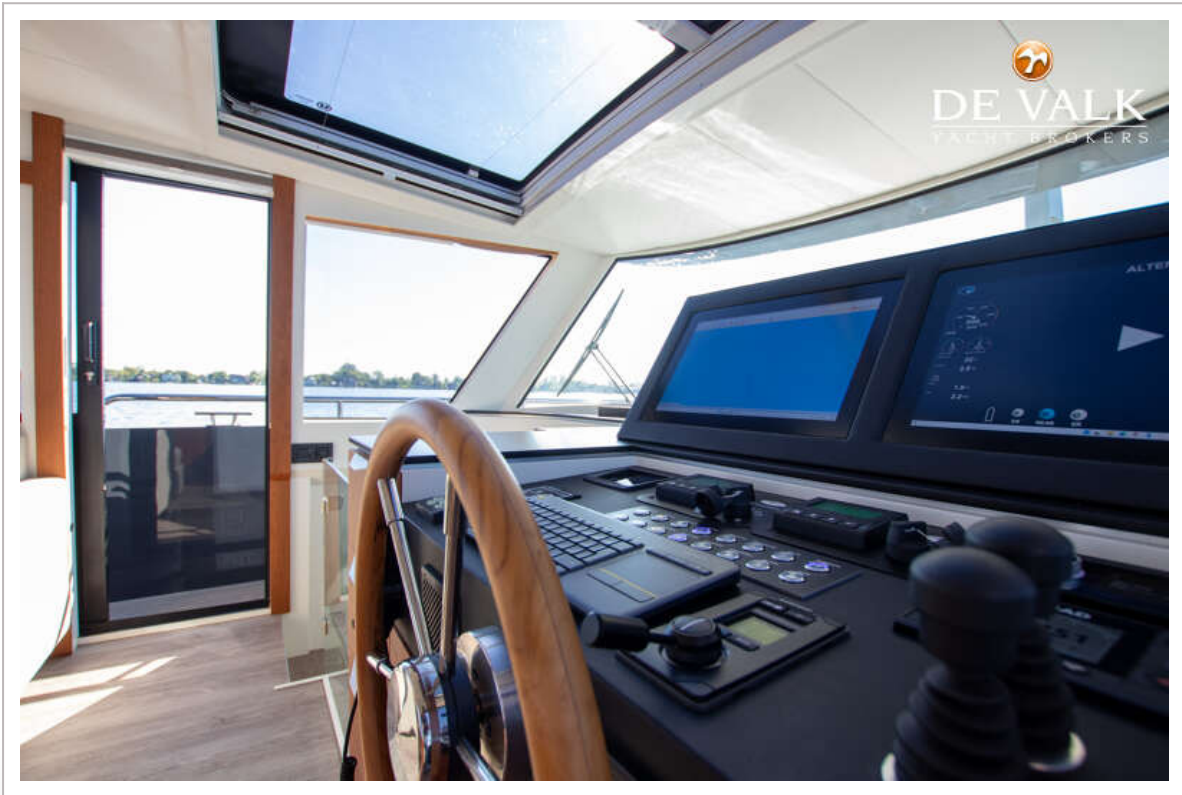
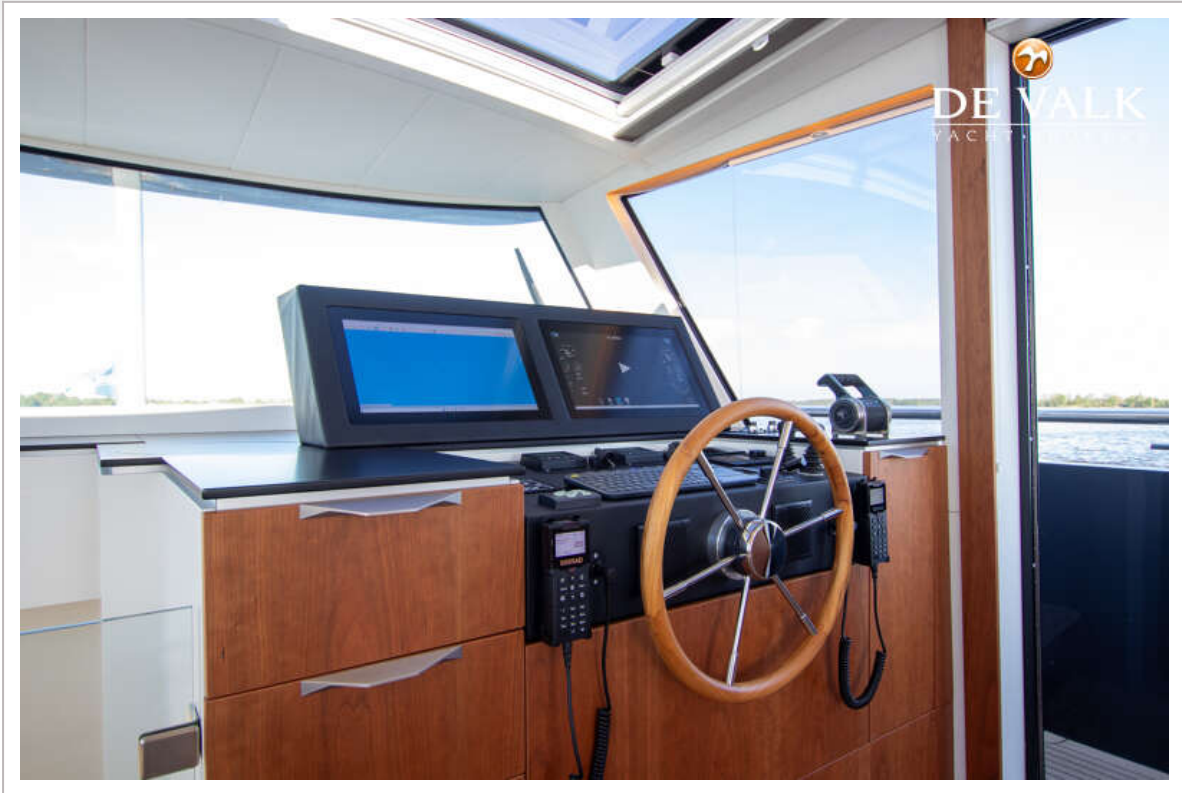


# ALTENA 54 NG

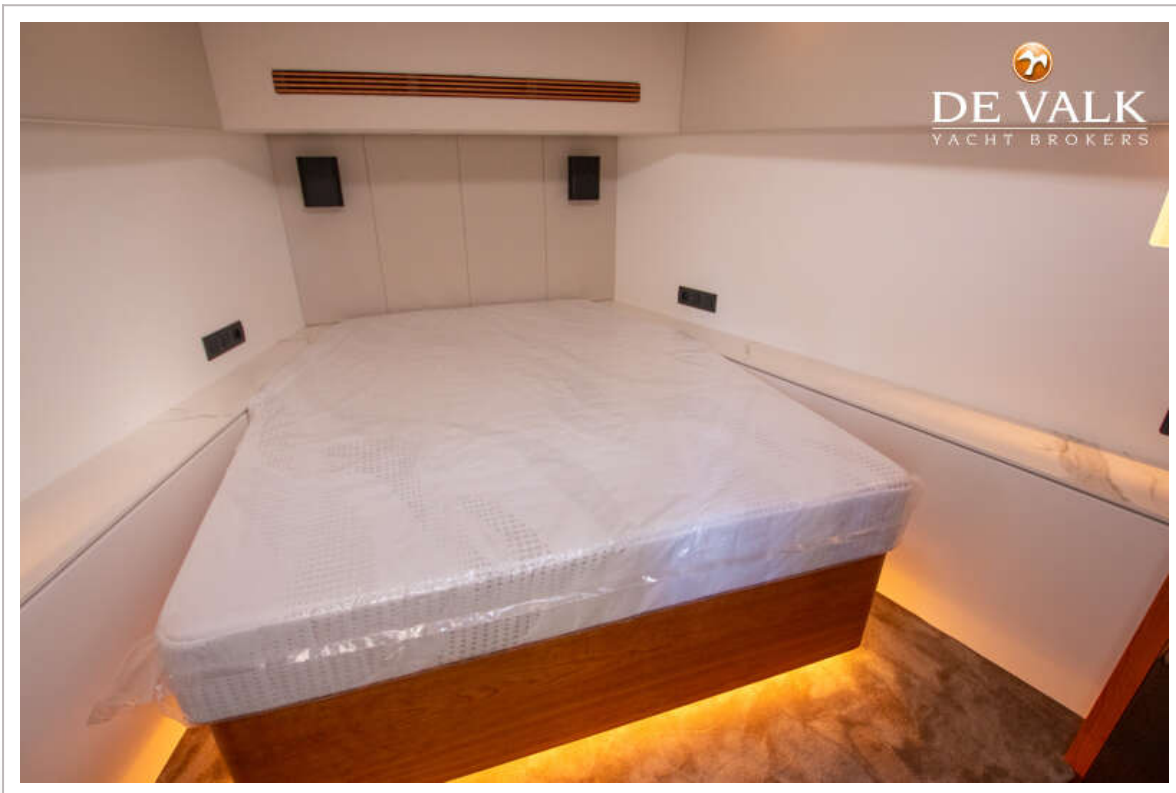
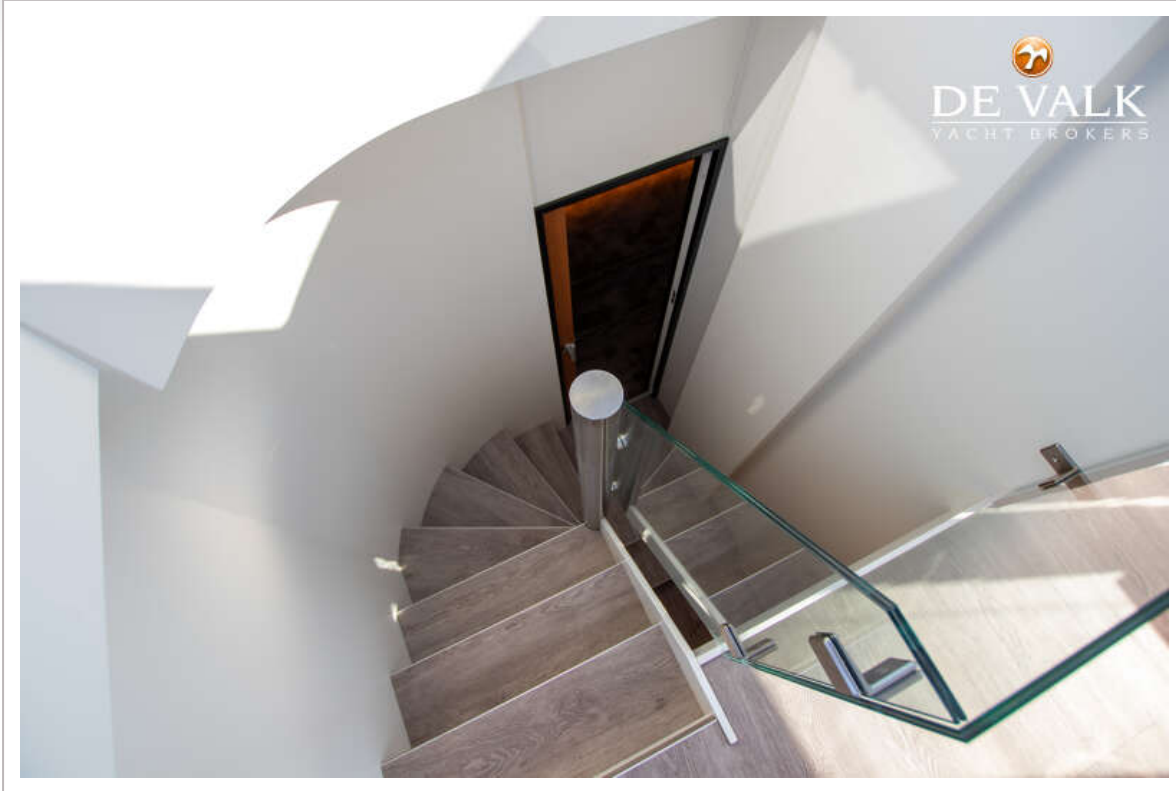




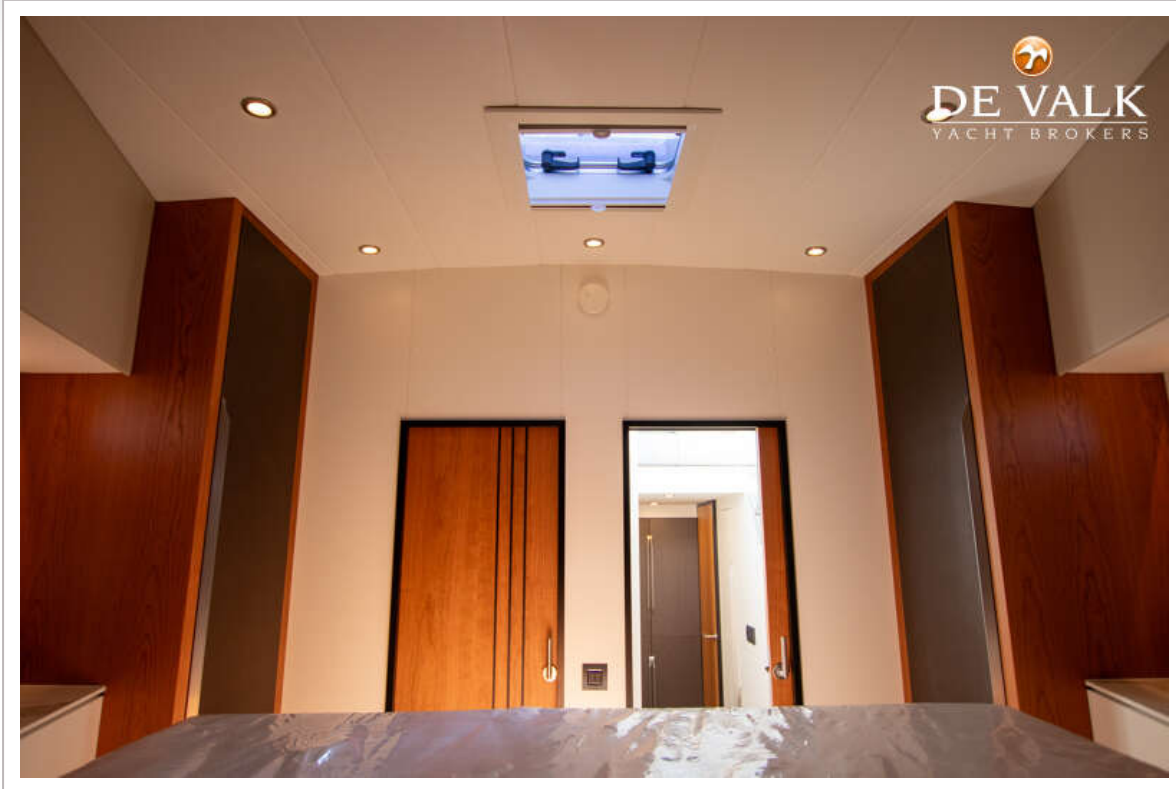
ALTENA 54 NG



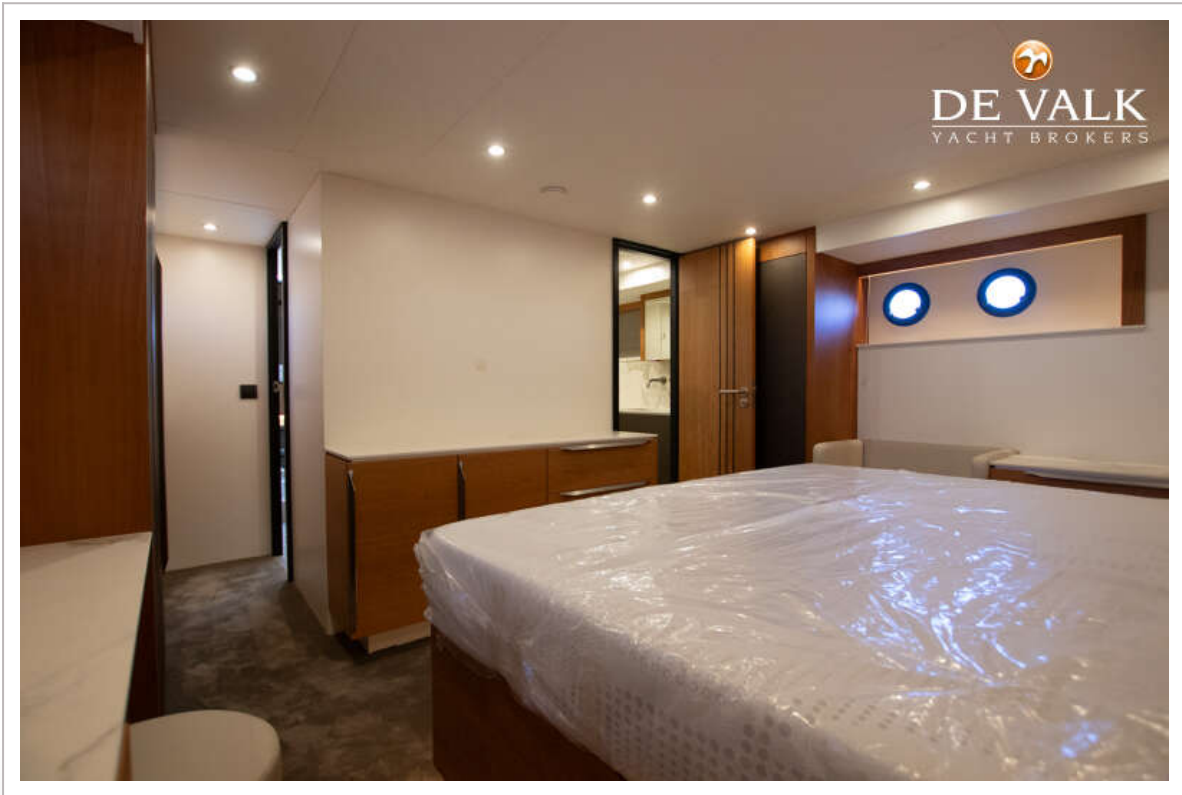
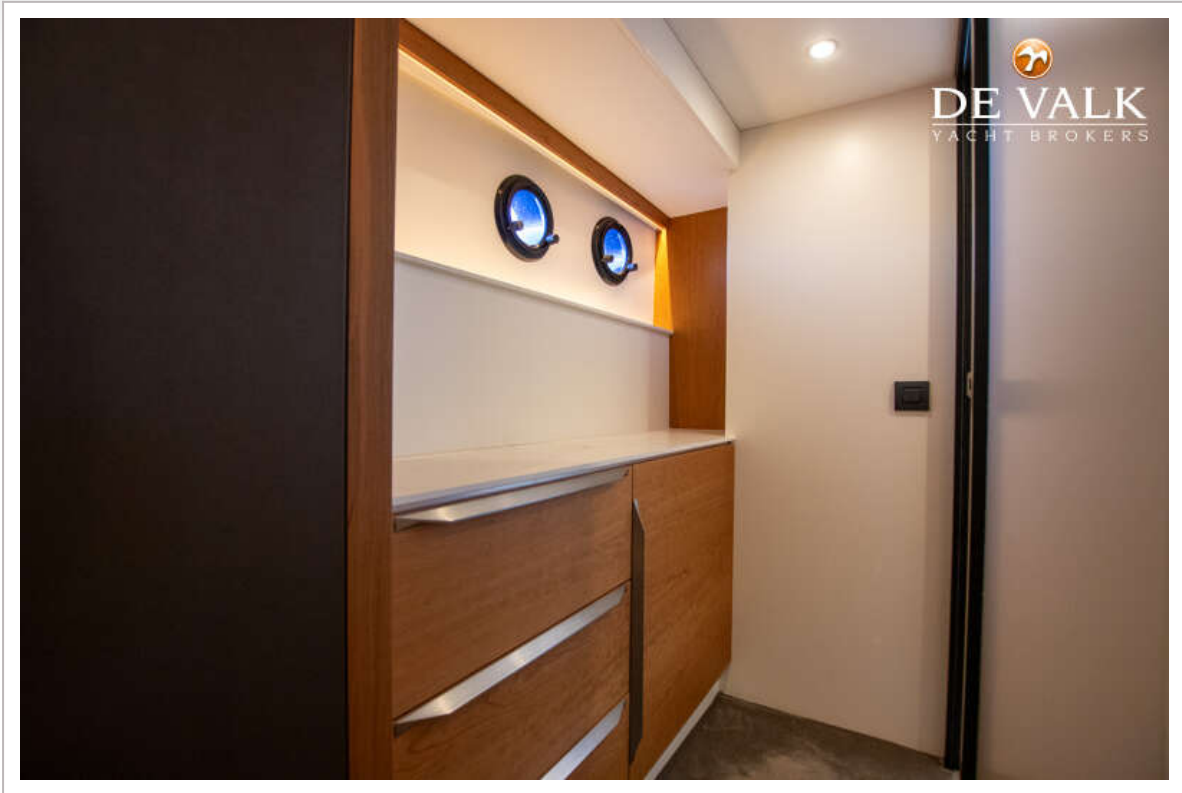
# ALTENA 54 NG



# ALTENA 54 NG

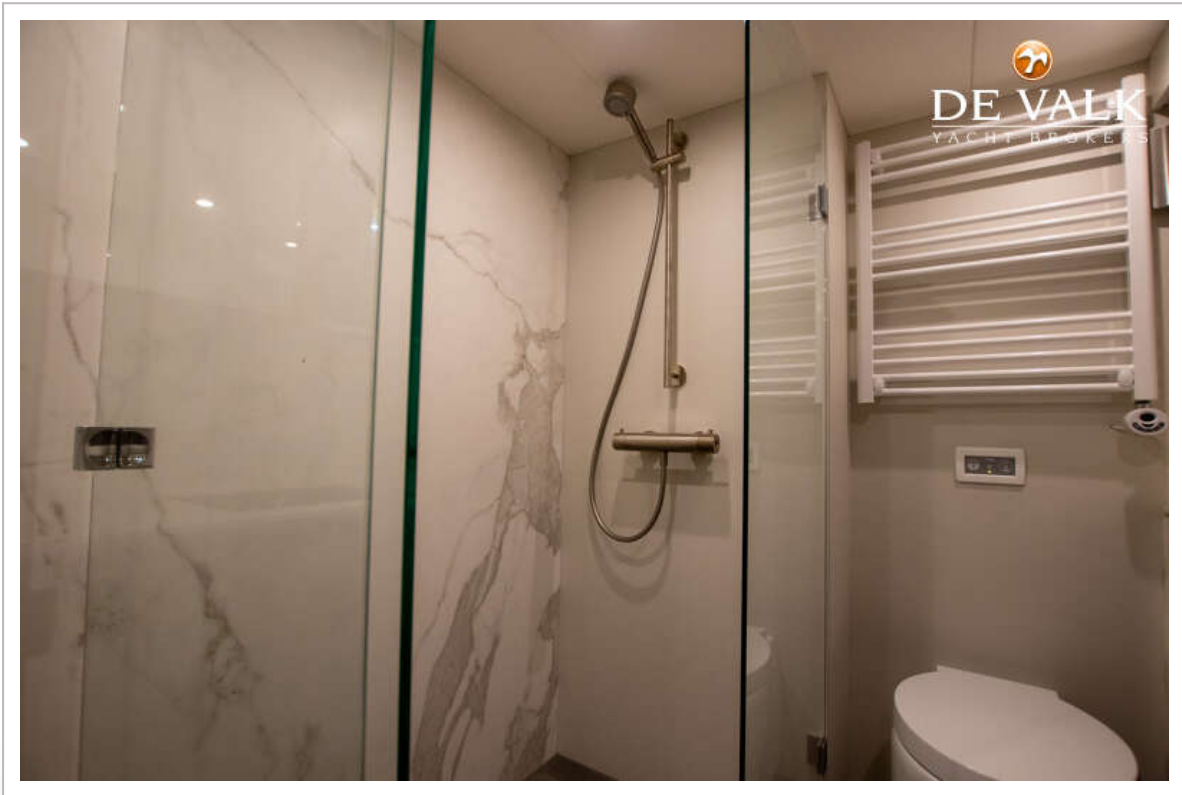
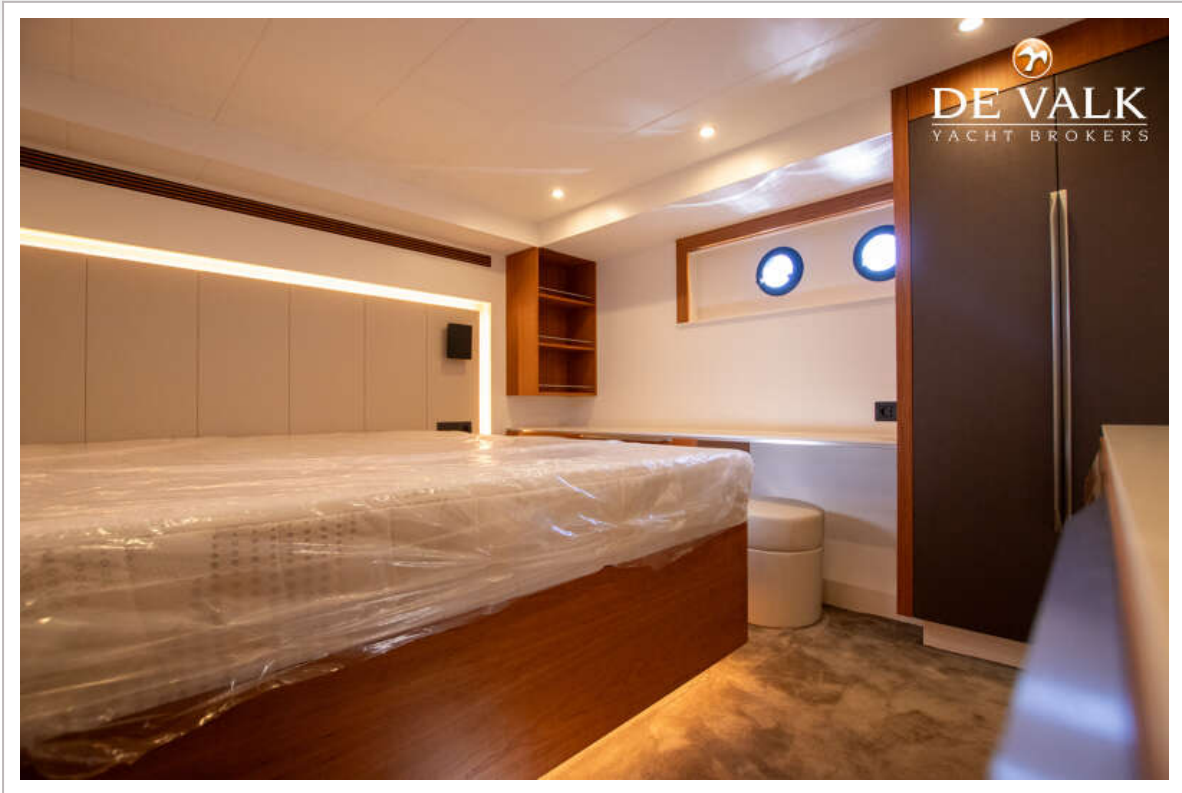


ALTENA 54 NG

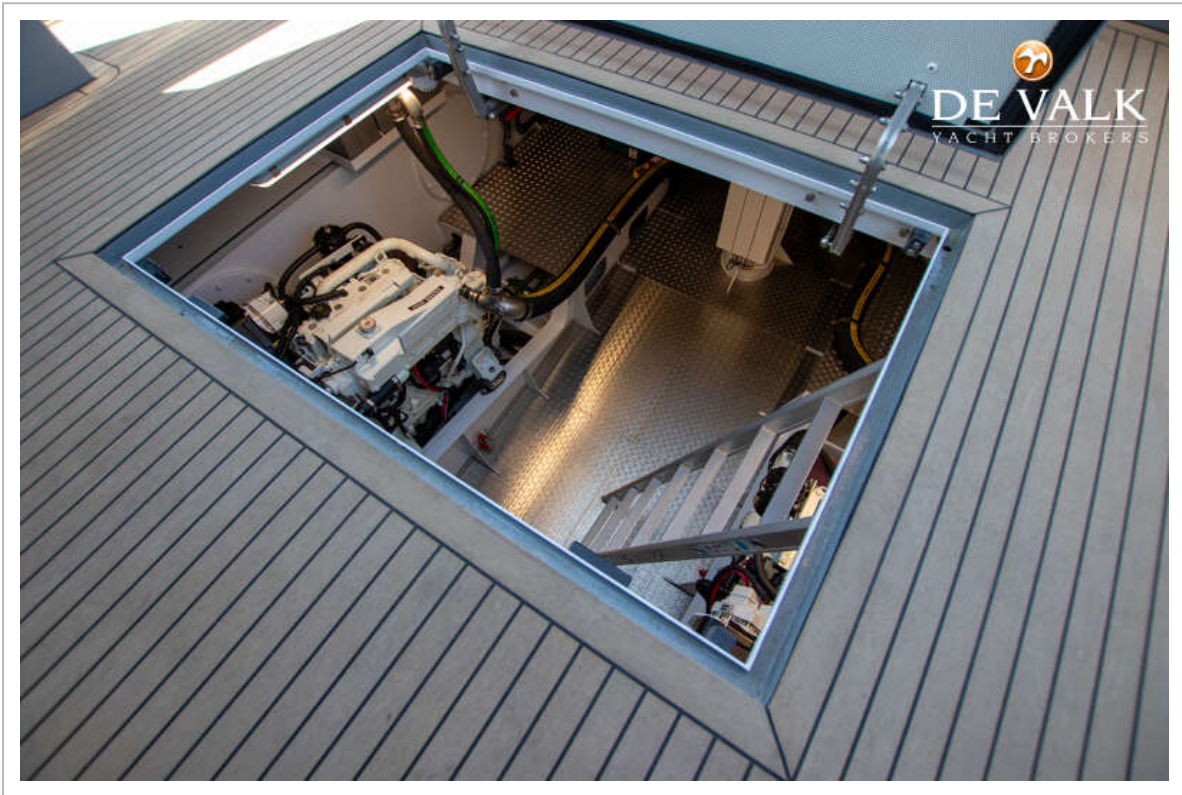




ALTENA 54 NG

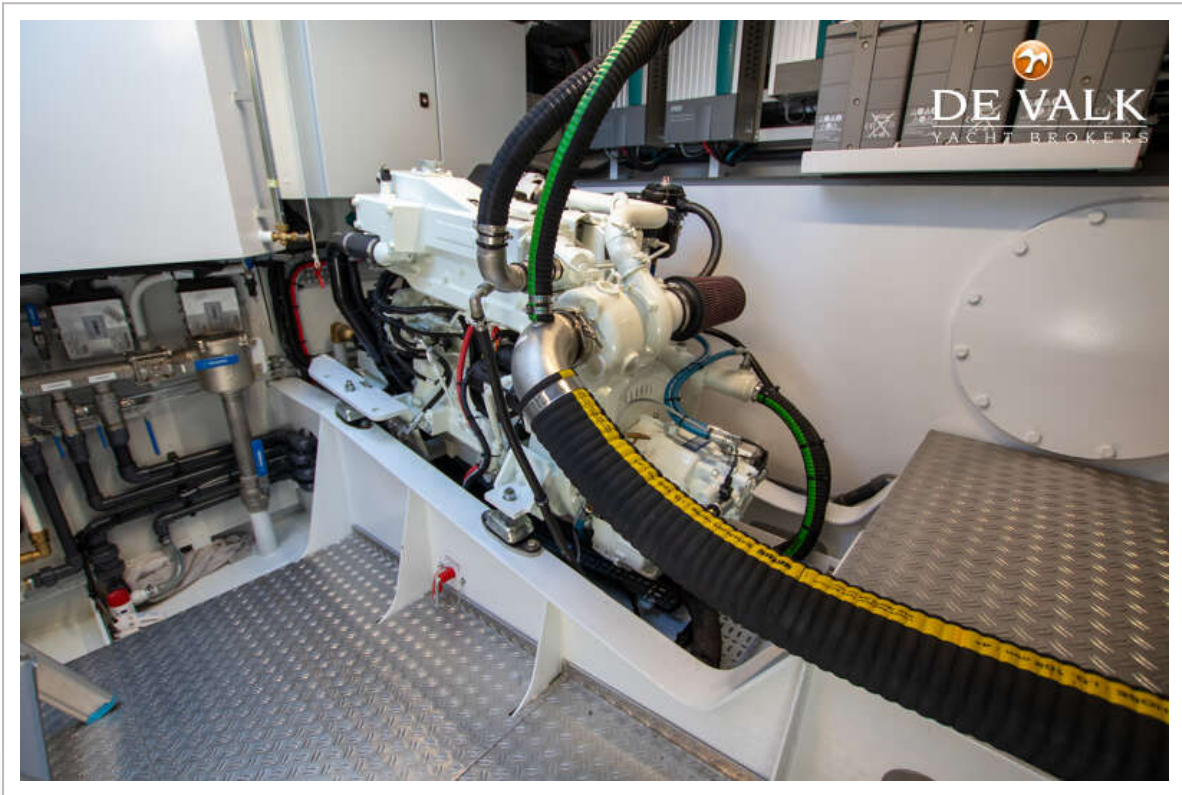
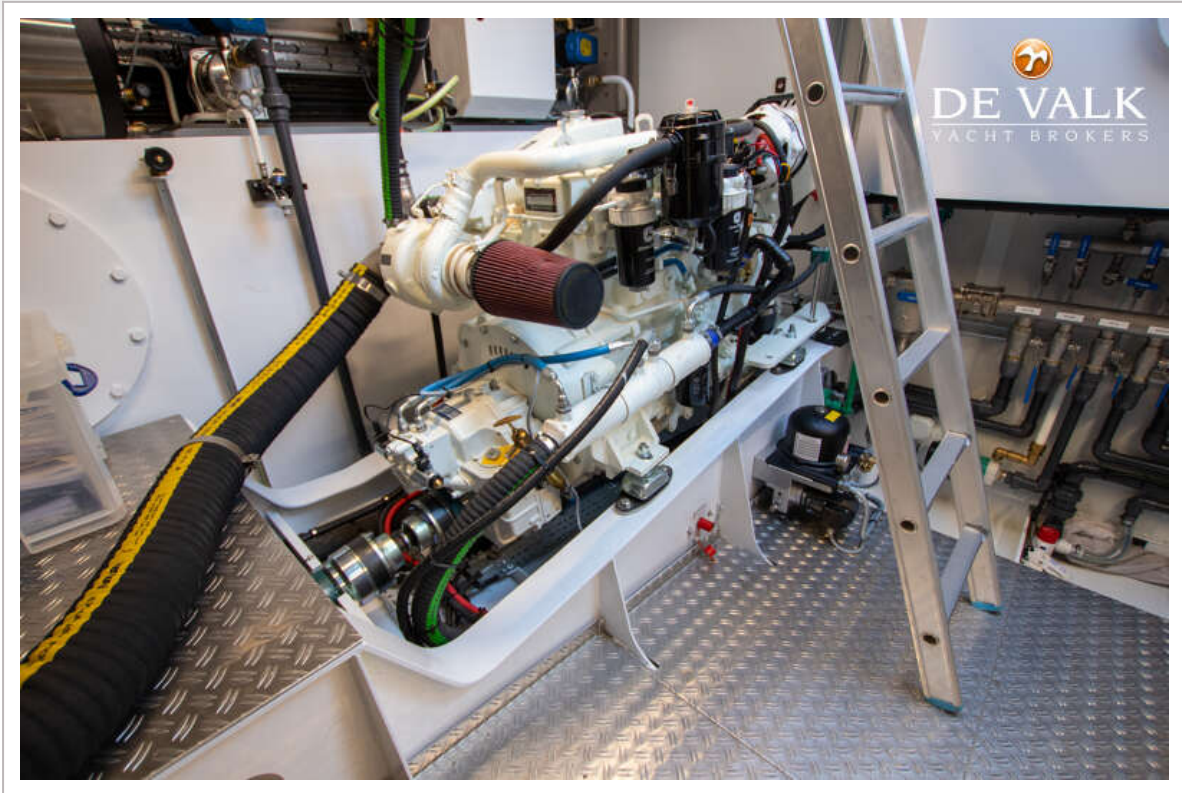


ALTENA 54 NG





ALTENA 54 NG



# ALTENA 54 NG

