



DE VALK  
YACHT BROKERS



## BENETEAU OCEANIS 50



DE VALK  
YACHT BROKERS

# BENETEAU OCEANIS 50

## BROKER'S COMMENTS

This, in better than new condition, beautiful Beneteau Oceanis 50 has undergone some major improvements in recent years. The aft cockpit can be transformed into a comfortable and cosy dining area. "Freya" is extremely suitable for long stays on board in comfort and independence thanks to the present airco and generator. Due to her electric winches she is very easy to sail. This immaculate Beneteau Oceanis 50 is now ready for you to be admired and to be inspected.

*Johan Schootstra*

## SPECIFICATIONS

<b>Dimensions</b>	15.10 x 4.49 x 1.70 (m)	<b>Builder</b>	Beneteau
<b>Built</b>	2009	<b>Cabins</b>	3
<b>Material</b>	GRP	<b>Berths</b>	7
<b>Engine(s)</b>	1 x Yanmar 4JH4-HTE diesel	<b>Hp/Kw</b>	110 (hp), 80.96 (kw)
<b>Asking price</b>	Under Offer (VAT )	<b>Lying</b>	elsewhere / not at sales office

## CONTACT

<b>Sales office</b>	De Valk Hindeloopen	<b>Telephone</b>	+31 514 52 40 00
<b>Address</b>	Oosterstrand 1 8713 JS Hindeloopen The Netherlands	<b>E-mail</b>	hindeloopen@devalk.nl

## DISCLAIMER

These particulars are given in good faith as supplied but cannot be guaranteed.



# BENETEAU OCEANIS 50

## GENERAL

<b>Model</b>	BENETEAU OCEANIS 50
<b>Type</b>	sailing yacht
<b>LOA (m)</b>	15,10
<b>LWL (m)</b>	13,30
<b>Beam (m)</b>	4,49
<b>Draft (m)</b>	1,70
<b>Year built</b>	2009
<b>Builder</b>	Beneteau
<b>Country</b>	France
<b>Designer</b>	Berret & Racoupeau Design
<b>Displacement (t)</b>	12,5
<b>Ballast (tonnes)</b>	cast iron   4,3 t.
<b>CE norm</b>	A
<b>Hull material</b>	GRP
<b>Hull colour</b>	white
<b>Hull shape</b>	round-bilged
<b>Keel type</b>	fin keel
<b>Superstructure material</b>	GRP
<b>Deck material</b>	GRP
<b>Deck finish</b>	teak   new 2018 sanded 2024
<b>Superstructure deck finish</b>	non-skid moulded in
<b>Cockpit deck finish</b>	teak   new 2018 sanded 2024
<b>Antifouling (year)</b>	Hempel Silic One 2023
<b>Window frame</b>	aluminium
<b>Window material</b>	perspex
<b>Deckhatch</b>	7x
<b>Portholes</b>	yes
<b>Fuel tank (litre)</b>	polyethylene   235 ltr.
<b>Fuel tank 2 (litre)</b>	aluminium   100 ltr.
<b>Level indicator (fuel tank)</b>	yes



<b>Freshwater tank (litre)</b>	polyethylene   565 ltr.
<b>Blackwater tank (litre)</b>	polyethylene   2 x 70 ltr.
<b>Blackwater tank extraction</b>	deck extraction
<b>Wheel steering</b>	cable steering   2x with leather and covers
<b>Emergency tiller</b>	yes

## ACCOMMODATION

<b>Cabins</b>	3
<b>Berths</b>	7
<b>Interior</b>	teak
<b>Layout</b>	Two aft cabins with shared bathroom, big saloon and owners cabin in front with bathroom
<b>Floor</b>	wood
<b>Open cockpit</b>	yes
<b>Saloon</b>	yes
<b>Headroom saloon (m)</b>	2,05 mtr.
<b>Heating</b>	diesel ducted hot air   Webasto Air top Evo 55D 5kw   new 2019
<b>Heating 2</b>	diesel ducted hot air   Webasto Air top 2000 2kw   new 2020
<b>Air-conditioning</b>	reverse cycle airco   in all cabins
<b>Navigation center</b>	yes
<b>Chart table</b>	yes
<b>Aft Cabin</b>	2 x
<b>Dinette</b>	yes
<b>Galley</b>	yes
<b>Countertop</b>	corian   White
<b>Sink</b>	stainless steel   double sink
<b>Cooker</b>	calor gas   4 burner
<b>Oven</b>	Integrated in cooker
<b>Gas alarm</b>	With Truma remote gas Valvefor stove
<b>Microwave</b>	Eko
<b>Fridge</b>	2x Vitrefrigo   Top and front loader



# BENETEAU OCEANIS 50

Freezer	Waeco
Hot water system	220V + engine   Quick 40 ltr.
Water pressure system	electrical
Manual and/or foot pump	yes
Owners cabin	French bed   forward cabin   Tempur mattress
Bed length (m)	2 mtr.
Wardrobe	hanging/drawers/shelves
Bathroom	en suite
Toilet	Jabsco
Toilet system	electric
Wash basin	yes
Shower	yes
Guest cabin 1	double bed   aft cabin   Comfort mattress
Bed length (m)	2 mtr.
Wardrobe	hanging and shelves
Guest cabin 2	double bed   aft cabin   Comfort mattress
Bed length (m)	2 mtr.
Wardrobe	hanging and shelves
Bathroom	shared
Toilet	Jabsco
Toilet system	electric
Wash basin	yes
Shower	yes
Extra info	Leather upholstery in saloon

## MACHINERY

No of engines	1
Make	Yanmar
Type	4JH4-HTE
HP	110
kW	80.96



# BENETEAU OCEANIS 50

<b>Fuel</b>	diesel
<b>Year installed</b>	2009
<b>Maximum speed (kn)</b>	9,2
<b>Cruising speed (kn)</b>	8
<b>Consumption (l/hr)</b>	4,5
<b>Range (nm)</b>	550
<b>Engine hours</b>	1369
<b>Engine cooling system</b>	freshwater heat exchanger
<b>Drive</b>	shaft
<b>Shaft seal</b>	New stuffingbox 2024
<b>Engine controls</b>	bowden cable
<b>Gearbox</b>	mechanical
<b>Bowthruster</b>	electric   MaxPower
<b>Propeller type</b>	folding   Flexofold
<b>Propeller blades</b>	3
<b>Propeller shaft material</b>	stainless steel
<b>Shaft lubrication</b>	water
<b>Manual bilge pump</b>	yes
<b>Electric bilge pump</b>	yes
<b>Electrical installation</b>	12 V DC and 220 V AC
<b>Generator</b>	Onan 5,5 Kva
<b>Running hours generator</b>	140 hours 06-2024
<b>Start battery</b>	New 2020
<b>Service battery</b>	4 x 180 Ah Exide Dual AGM   new 2020
<b>Generator battery</b>	New 2020
<b>Bowthruster battery</b>	New 2019
<b>Battery monitor</b>	Victron
<b>Battery charger</b>	Mastervolt 12/50-3 and Cristec 12/40A
<b>Inverter</b>	2x Cristec 12 - 200VA
<b>Solar panel</b>	2 x 275W   2x Victron Smart charger
<b>Shorepower</b>	with cable



## NAVIGATION

<b>Compass</b>	2 x
<b>Electric compass</b>	Data from: Raymarine i70s   new 2017
<b>Depth sounder</b>	Data from: Raymarine i70s   new 2017
<b>Log</b>	Data from: Raymarine i70s   new 2017
<b>Windset</b>	Data from: Raymarine i70s   new 2017
<b>VHF</b>	Garmin 215 with repeater station in cockpit new 2019   Antenna for VHF new 2022
<b>Autopilot</b>	Raymarine EV with p70s display   new 2017
<b>Rudder angle indicator</b>	On Raymarine autopilot
<b>Radar</b>	Raymarine
<b>Plotter/GPS</b>	Garmin 7412xsv new 2015
<b>Radar/GPS/plotter</b>	Raymarine Axion new 2022   Raymarine E80
<b>Navtex</b>	Furuno NX 300
<b>AIS transceiver</b>	Em-Trac new 2020   Antenna for ais new 2022
<b>EPIRB</b>	New 2018
<b>Navigation lights</b>	yes
<b>Searchlight</b>	yes

## EQUIPMENT

<b>Sprayhood</b>	the old sprayhood is still present, as good as new. At the owner house
<b>Fixed hardtop</b>	Custom Fibreglass 2022
<b>Bimini</b>	Almost new currently at owners house
<b>Winter cover</b>	yes
<b>Cockpit cushions</b>	yes
<b>Cockpit table</b>	yes
<b>Bathing platform</b>	yes
<b>Boarding ladder</b>	stainless steel
<b>Deck shower</b>	yes
<b>Anchor</b>	Delta



# BENETEAU OCEANIS 50

Anchor chain	12 mm 110 mtr.
Chain counter	Quick
Windlass	electrical   Lewmar with wireless remote control
Capstan	yes
Dinghy	inflatable   Quicksilver 2,7 mtr.
Outboard	Mercury
Sea railing	wire
Grab rail (superstructure)	teak
Railing side opening gates	yes
Pushpit	yes
Pulpit	yes
Life raft	container   Plastimo transocean
Life raft (pers)	6
Last life raft survey	2023
Lifebuoy	yes
Rope cutter	yes
Radar reflector	yes
Fenders	yes
Mooring lines	yes
Spare parts	yes
TV	yes
Radio-cd player	Sony 2020
DVD player	yes
Cockpit speakers	2020
Speakers in salon	yes
Clock - barometer	yes
Fire extinguisher	yes
Latest extinguisher survey	2020
Extinguisher in engine room	And generator room

## RIGGING





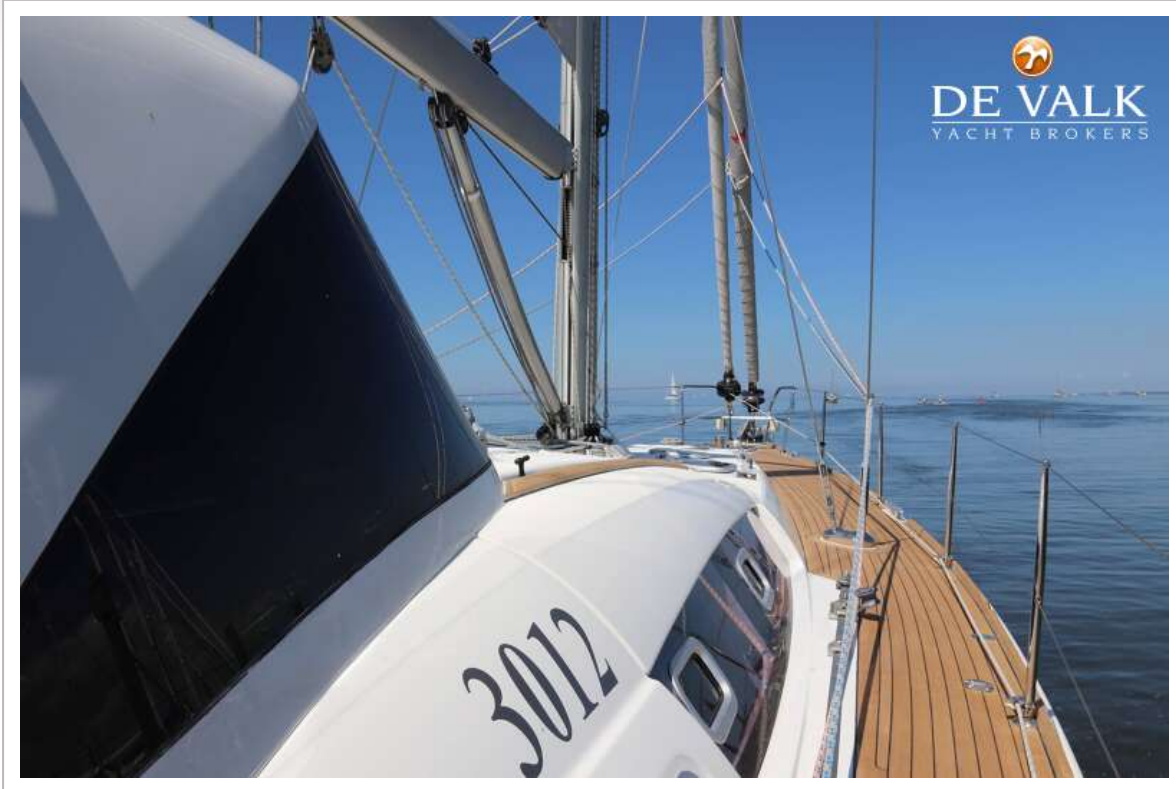
<b>Rigging</b>	cutter
<b>Standing rigging</b>	wire   new 06-2024
<b>Brand mast</b>	Sparcraft
<b>Material mast</b>	aluminium
<b>Spreaders</b>	2 sets
<b>Mainsail</b>	Elvstrøm EPEX   new 2018
<b>Fully battened mainsail</b>	yes
<b>Stoway mast</b>	yes
<b>Cutterstay</b>	yes
<b>Jib</b>	On cutter furler   North Sails NPL NorLam Xi11   new 2019
<b>Genoa</b>	Elvstrøm EPEX   new 2018
<b>Genoa furler</b>	Facnor LS 290
<b>Cutter furler</b>	Furlex 304S
<b>Reefing System</b>	main in-mast furling
<b>Backstay adjuster</b>	mechanical
<b>Boomvang</b>	gasspring
<b>Primary sheet winch</b>	2x harken ST46
<b>Genoa sheetwinches</b>	2x Harken ST53   Electric
<b>Halyard winches</b>	2x Harken ST44   one electric
<b>Spi-pole</b>	aluminium



# BENETEAU OCEANIS 50



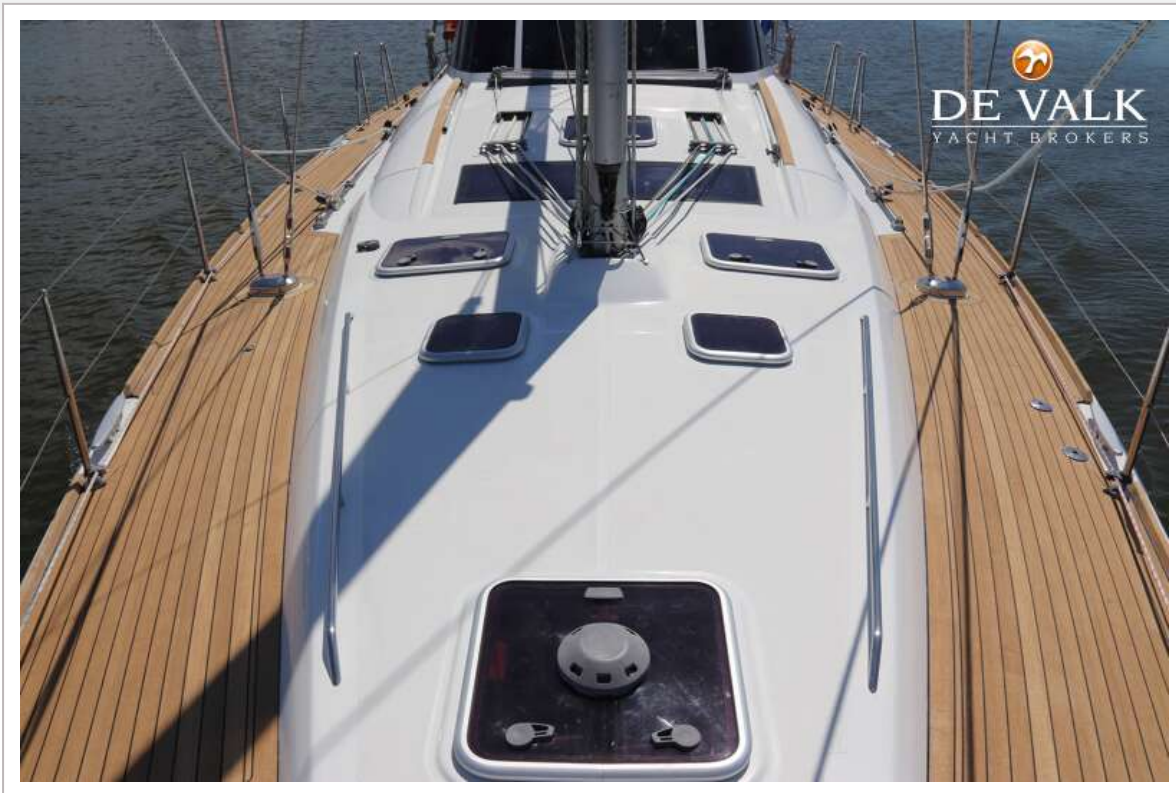
# BENETEAU OCEANIS 50



# BENETEAU OCEANIS 50



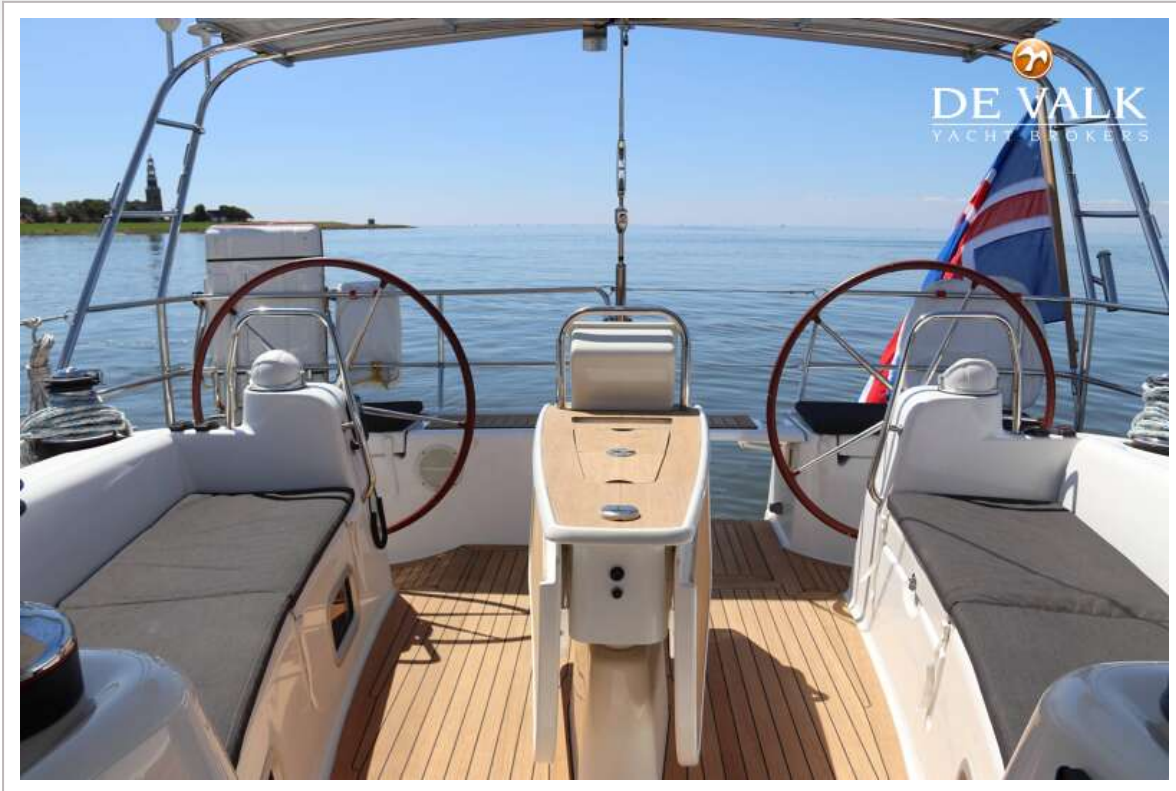
# BENETEAU OCEANIS 50



# BENETEAU OCEANIS 50



# BENETEAU OCEANIS 50



# BENETEAU OCEANIS 50





# BENETEAU OCEANIS 50



# BENETEAU OCEANIS 50



# BENETEAU OCEANIS 50



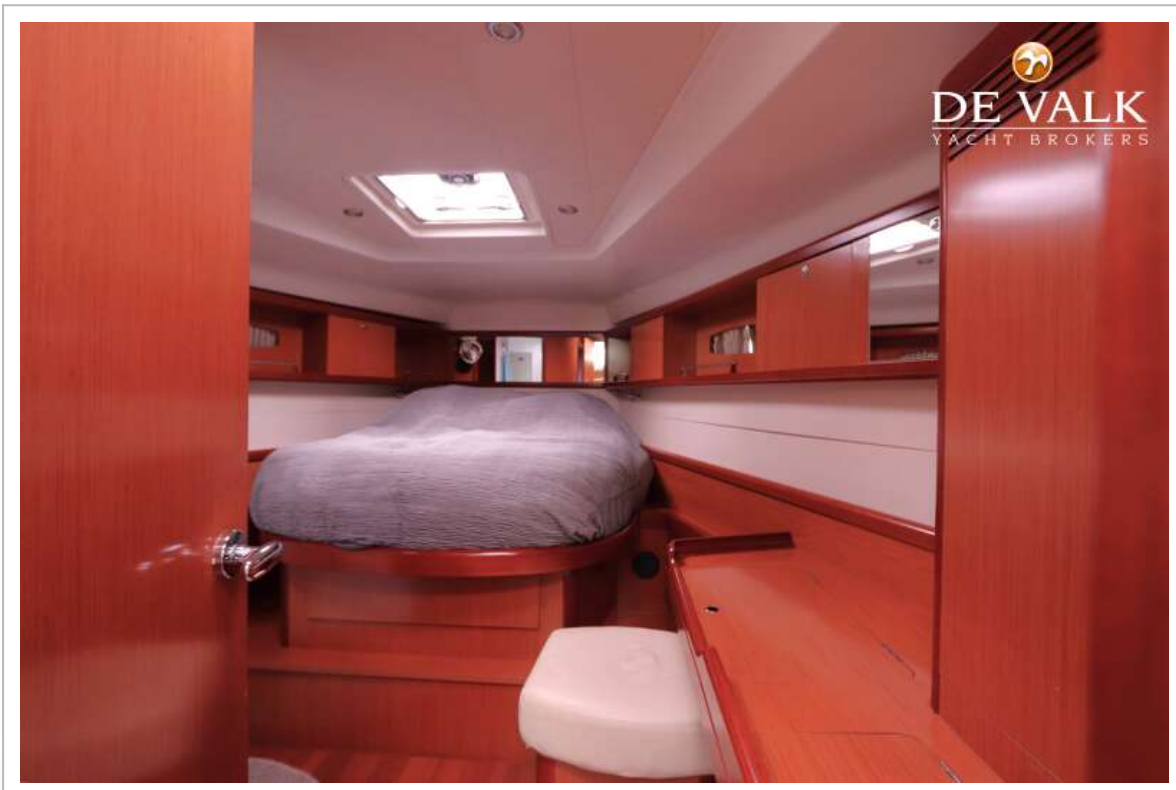
# BENETEAU OCEANIS 50



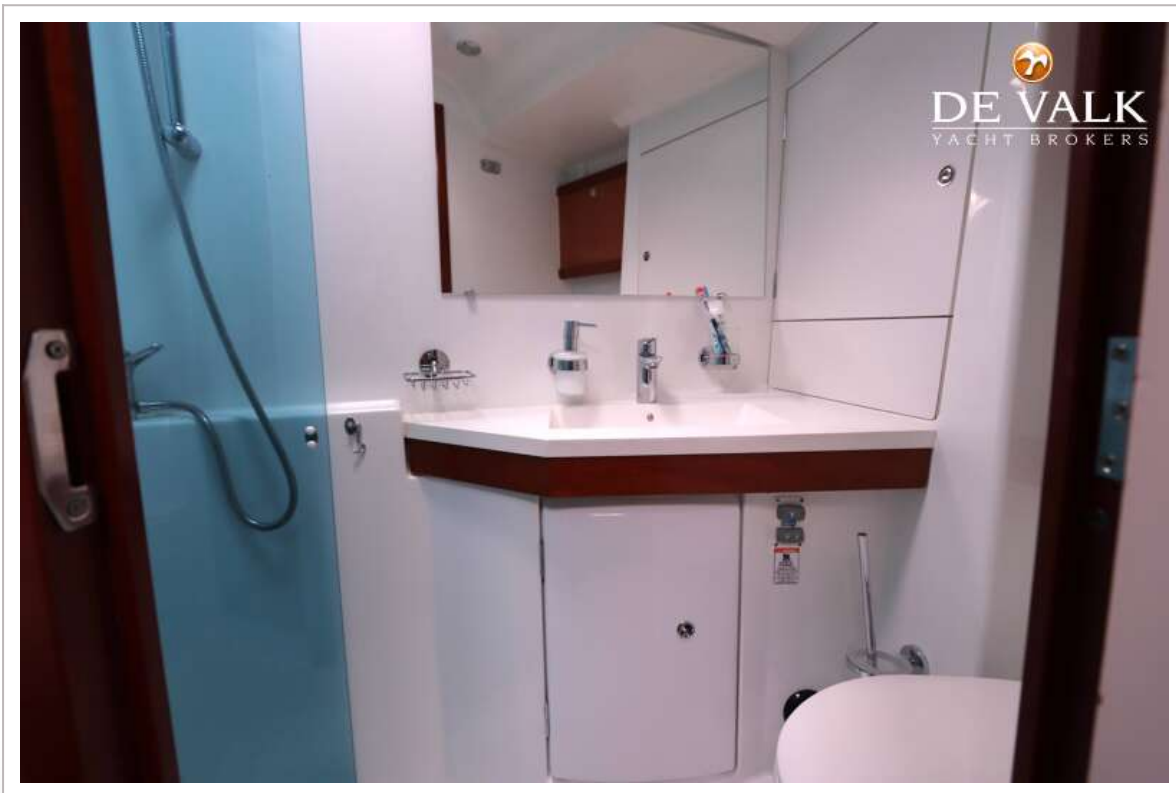
# BENETEAU OCEANIS 50



# BENETEAU OCEANIS 50



# BENETEAU OCEANIS 50



# BENETEAU OCEANIS 50

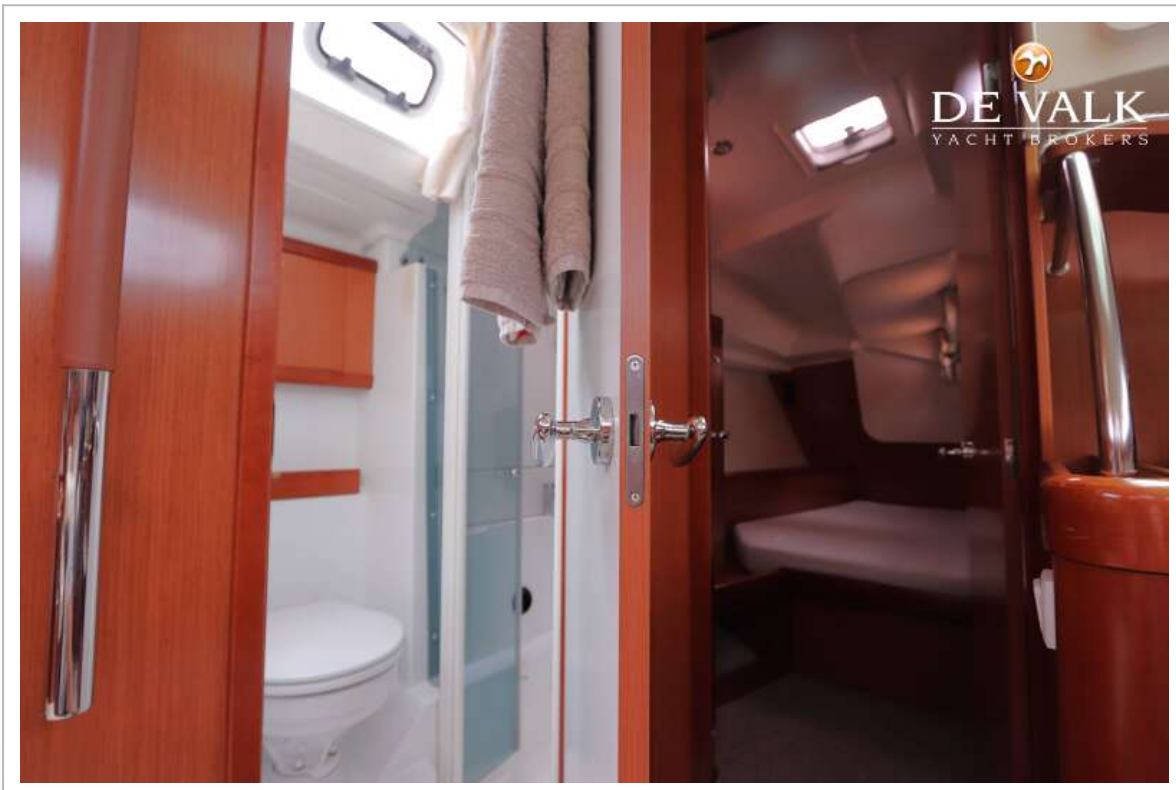




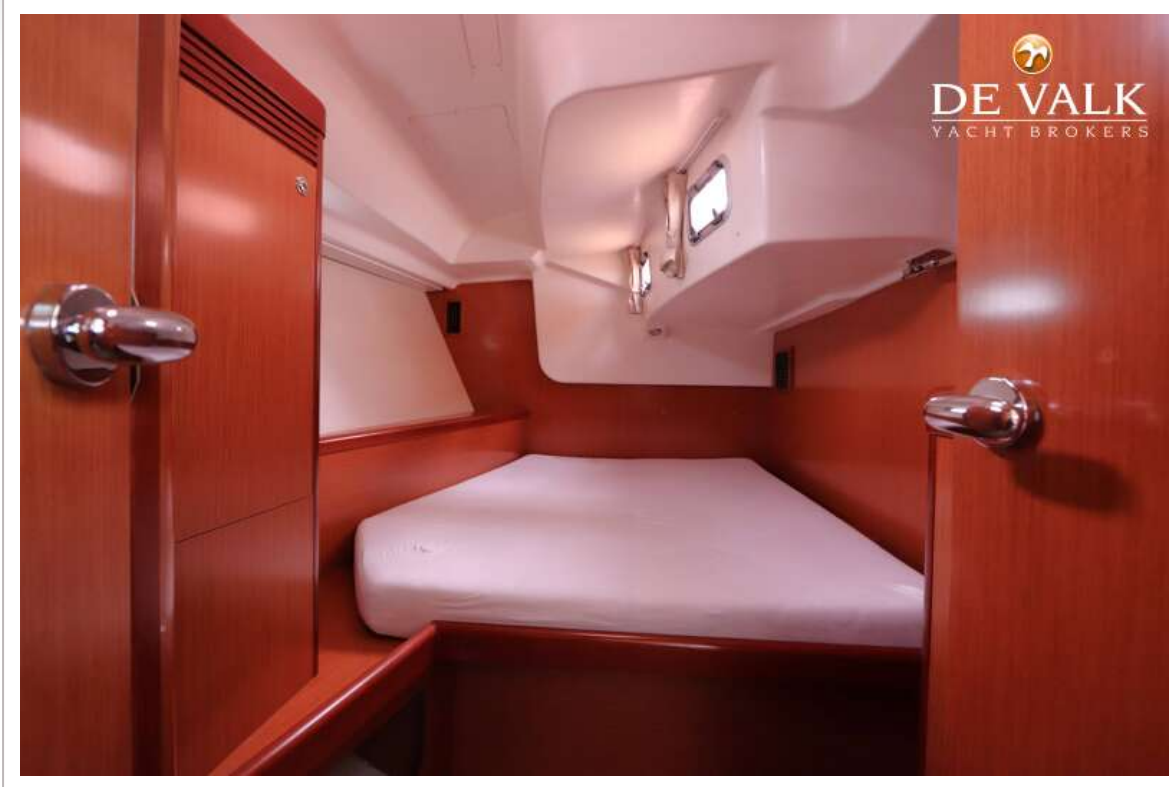
# BENETEAU OCEANIS 50



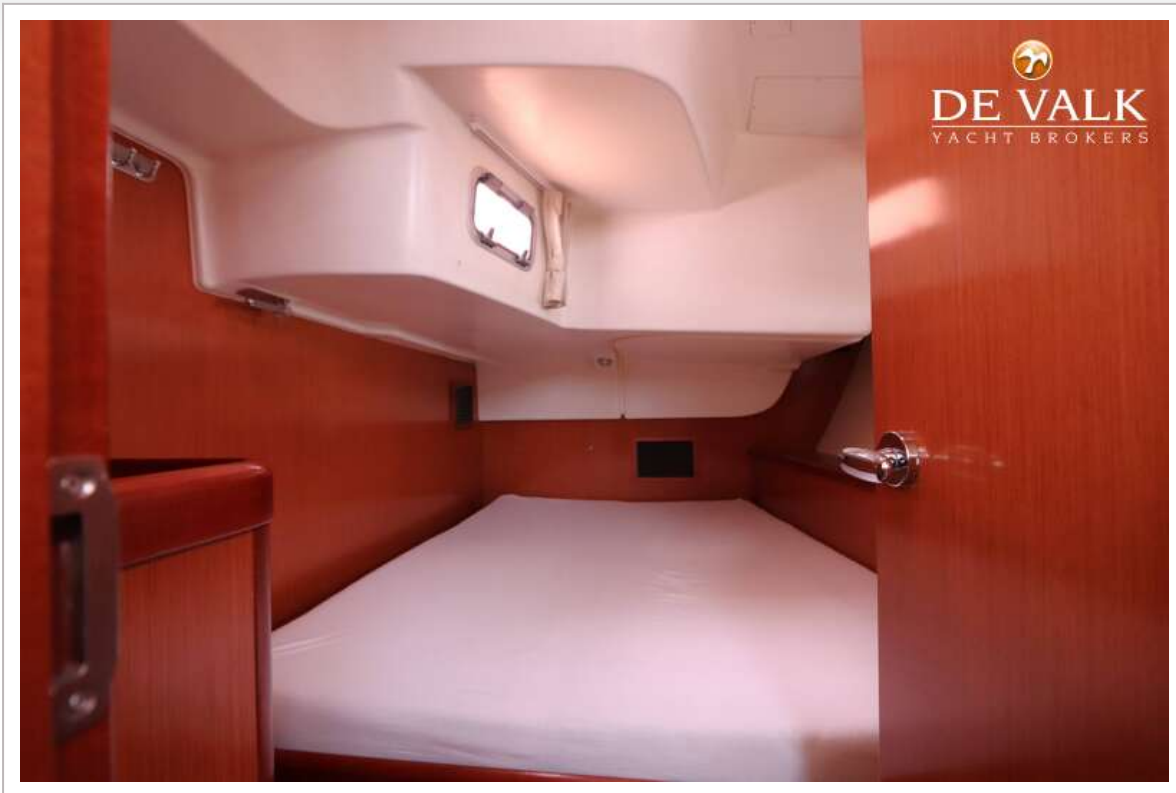
# BENETEAU OCEANIS 50



# BENETEAU OCEANIS 50



# BENETEAU OCEANIS 50



# BENETEAU OCEANIS 50

