



## BENETEAU OCEANIS 60



**DE VALK**  
YACHT BROKERS

# BENETEAU OCEANIS 60

## BROKER'S COMMENTS

The Beneteau Oceanis 60, designed by Berret Racoupeau / Nauta Design, is a spectacular boat. Very suitable for making beautiful trips and a great place to stay. Easy to handle with two steering wheels, E-winches, autopilot, bow thruster and a strong engine. Well equipped with B&G navigation equipment. The interior has a friendly staircase down to the salon, which is light, comfortable and spacious with good ventilation. A beautiful master cabin and two guest cabins all with private bathrooms. It is located in Italy and can be visited by appointment.

*Ger Bayens*

## SPECIFICATIONS

<b>Dimensions</b>	18.24 x 4.99 x 2.70 (m)	<b>Builder</b>	Beneteau
<b>Built</b>	2016	<b>Cabins</b>	3
<b>Material</b>	GRP	<b>Berths</b>	10
<b>Engine(s)</b>	1 x VW TDI 140-5 diesel	<b>Hp/Kw</b>	135 (hp), 99.36 (kw)
<b>Asking price</b>	€ 395.000 (VAT Not paid)	<b>Lying</b>	Italy

## CONTACT

<b>Sales office</b>	De Valk Thuishaven	<b>Telephone</b>	+31 35 5829042
<b>Address</b>	Peperstraat 7 1411 PX Naarden The Netherlands	<b>E-mail</b>	thuishaven@devalk.nl

## DISCLAIMER

These particulars are given in good faith as supplied but cannot be guaranteed.



# BENETEAU OCEANIS 60

## GENERAL

Model	BENETEAU OCEANIS 60
Type	sailing yacht
LOA (m)	18,24
LWL (m)	16,43
Beam (m)	4,99
Draft (m)	2,70
Air draft (m)	29,50
Headroom (m)	2,08
Year built	2016
Launched	2016
Builder	Beneteau
Country	France
Designer	Berret Racoupeau / Nauta Design
Displacement (t)	23
Ballast (tonnes)	7.1
CE norm	A
Hull material	GRP
Hull colour	white
Hull shape	round-bilged
Keel type	fin keel with bulb
Superstructure material	GRP
Deck material	GRP
Deck finish	teak
Superstructure deck finish	teak
Cockpit deck finish	teak
Antifouling (year)	2024
Window material	polycarbonate
Deckhatch	With blackout blinds / mosquito screens
Portholes	aluminium
Fuel tank (litre)	polyethylene 480 two tanks



Level indicator (fuel tank)	yes
Freshwater tank (litre)	polyethylene 708 three tanks
Level indicator (freshwater)	yes
Blackwater tank (litre)	polyethylene 146 (two tanks)
Level indicator (blackwater)	yes
Blackwater tank extraction	deck extraction + uw line
Wheel steering	cable steering Double
Emergency tiller	yes

## ACCOMMODATION

Cabins	3
Berths	10
Crew cabin	yes
Crew berths	Two berths
Interior	mahogany
Layout	Owner cabin, 2 guest cabins, 3 headrooms, galley & crew cabin
Floor	woodprint
Open cockpit	yes
Aft deck	yes
Saloon	yes
Headroom saloon (m)	2.20
Heating	central hot water Central heating Eberspächer CV / blowers
Navigation center	yes
Chart table	yes
Aft Cabin	yes
Dinette	with a folding table
Dinette to convert into berth	yes
Convertible berth	single berth
Opening door to cockpit	locked by E-lock system
Galley	yes
Countertop	corian



# BENETEAU OCEANIS 60

Sink	stainless steel 2x
Cooker	calor gas ENO stainless 3-flame
Oven	ENO
Microwave	Sharp
Fridge	yes
Freezer	can be converted to fridge
Hot water system	220V + engine
Water pressure system	electrical
Owners cabin	French bed
Bed length (m)	2,05 x 1,66
Wardrobe	hanging/drawers/shelves
Bathroom	en suite
Toilet	en suite
Toilet system	electric
Wash basin	in the bathroom
Shower	en suite
Guest cabin 1	double bed
Bed length (m)	2,00 x 1,60
Wardrobe	hanging and shelves
Bathroom	en suite
Toilet	en suite
Toilet system	manual
Wash basin	in the bathroom
Shower	separate
Guest cabin 2	twin single
Bed length (m)	twin single beds can be linked together 2,00 x 0,80
Wardrobe	hanging and shelves
Bathroom	en suite
Toilet	en suite
Toilet system	manual
Wash basin	in the bathroom
Shower	separate



Crew cabin(s)	double bunk bed 2,00 x 080
Toilet (crew)	yes
Toilet system	manual
Wash basin	at the toilet
Shower (crew)	yes

## MACHINERY

No of engines	1
Make	VW
Type	TDI 140-5
HP	135
kW	99.36
Fuel	diesel
Year installed	2016
Maximum speed (kn)	9,5
Cruising speed (kn)	8
Engine hours	1120
Engine cooling system	freshwater heat exchanger
Drive	shaft
Engine controls	bowden cable
Gearbox	mechanical
Bowthruster	electric
Exhaust	watercooled
Propeller type	feathering
Propeller blades	3
Propeller shaft material	stainless steel
Shaft lubrication	water
Manual bilge pump	yes
Electric bilge pump	February 2024, bilge pumps replaced
Bilge alarm	yes
Electrical installation	12/24/230V



<b>Batteries</b>	yes
<b>Start battery</b>	1 x Engine Exide 12V-85Ah ES950
<b>Service battery</b>	8 x Domestic Exide 12V-120Ah ES1350
<b>Bowthruster battery</b>	2 x Bow Thruster Optima Red Top 12V-50Ah RTU-4.2
<b>Windlass battery</b>	2 x Bow Thruster Optima Red Top 12V-50Ah RTU-4.2
<b>Battery monitor</b>	Mastervolt BTM III
<b>Battery charger</b>	3x Cristec 12/25
<b>Inverter</b>	Marinco 2000 Watt
<b>Diode battery combiners</b>	yes
<b>Shorepower</b>	with cable Double
<b>Extra info</b>	Full engine service, inboard and overboard hoses replaced

## NAVIGATION

<b>Compass</b>	2x
<b>Electric compass</b>	yes
<b>Depth sounder</b>	with forward depth scan B & G
<b>Log</b>	B & G
<b>Windset</b>	B & G
<b>Repeater</b>	B & G
<b>VHF</b>	B & G
<b>VHF handheld</b>	B & G
<b>Autopilot</b>	yes
<b>Rudder angle indicator</b>	at autopilot
<b>Radar/GPS/plotter</b>	B & G ZEUS 7
<b>Navtex</b>	with screen & printer Furuno NX-700
<b>Electronic chart(s)</b>	yes
<b>AIS transceiver</b>	B & G
<b>Navigation lights</b>	yes

## EQUIPMENT

<b>Sprayhood with grab rail</b>	yes
---------------------------------	-----



# BENETEAU OCEANIS 60

Bimini	Full Bimini installed 2022
Cockpit cushions	yes
Cockpit table	foldable
Bathing platform	yes
Boarding ladder	stainless steel
Deck shower	yes
Anchor	Delta Stainless steel
Anchor chain	50 Mtr
Windlass	electrical Lewmar with remote controle
Capstan	yes
Outboard support	yes
Davits	stainless steel With 500KG power
Davits controls	manual
Sea railing	wire
Grab rail (superstructure)	stainless steel
Railing side opening gates	2x
Pushpit	yes
Pulpit	yes
Life raft (pers)	8
Last life raft survey	2020
Lifebuoy	yes
Rope cutter	yes
Radar reflector	yes
Fenders	yes
Mooring lines	yes
TV	yes
Radio-cd player	Fusion MS AV75V
iPod connection	yes
Surround Sound System	yes
Sub-woofer	yes
Cockpit speakers	6x 350W
Speakers in salon	4x Bose 150W





Fire extinguisher	yes
Latest extinguisher survey	2020
Extra info	Stern "garage" electrically operated
Extra info	DigitalYacht wifi.

## RIGGING

Rigging	fractional 9/10th
Standing rigging	wire
Brand mast	Seldén
Material mast	aluminium
Spreaders	3 sets
Keel stepped mast	yes
Mainsail cover	with lazy jack's
Battcars	yes
Fully battened mainsail	Elvström
Genoa II	Elvström
Genoa furler	Fanor
Reefing System	slabreefing 3x
Backstay adjuster	hydraulic Navtex(2 cylinders)
Boomvang	mechanical and tackle Selden
Primary sheet winch	electrical 2x Harken 70 ST
Multifunctional winches	2x Harken 46 ST
Extra info	Sails, mainsail cover, sprayhood are laundered and serviced 2024



# BENETEAU OCEANIS 60



# BENETEAU OCEANIS 60



# BENETEAU OCEANIS 60





# BENETEAU OCEANIS 60



# BENETEAU OCEANIS 60

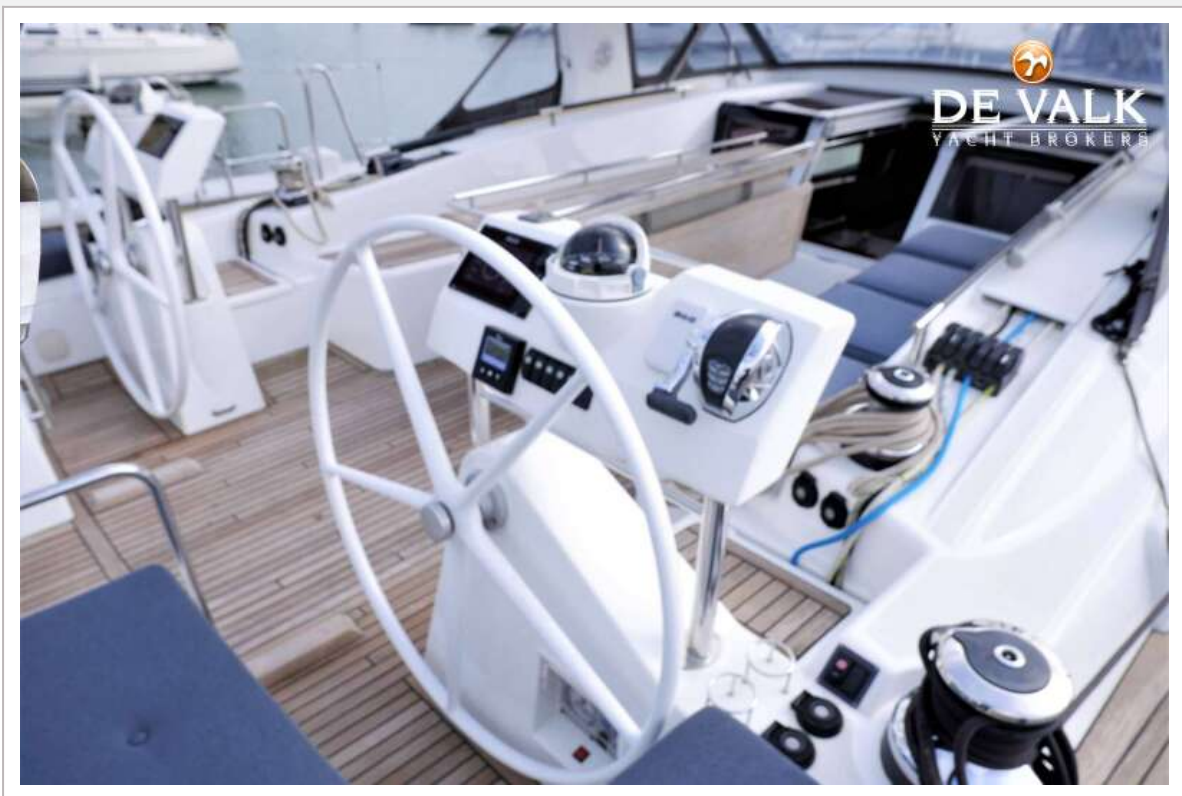


# BENETEAU OCEANIS 60





# BENETEAU OCEANIS 60

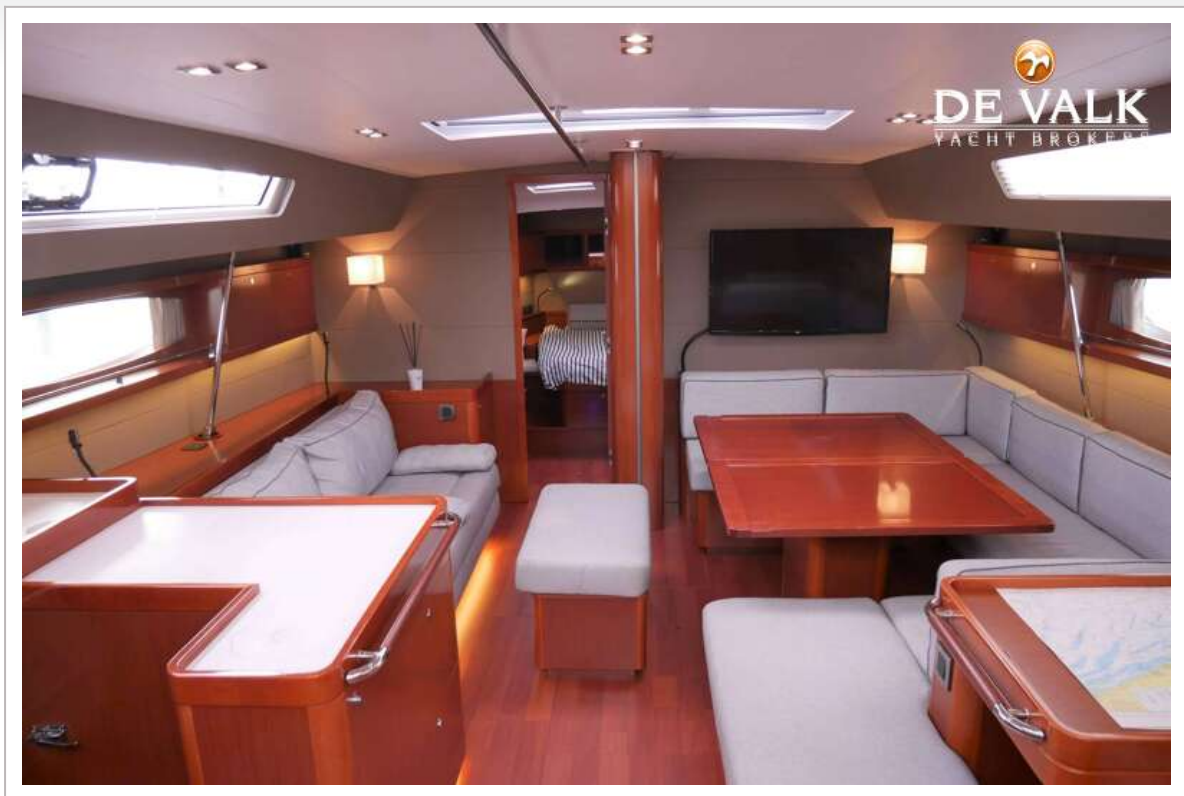




# BENETEAU OCEANIS 60

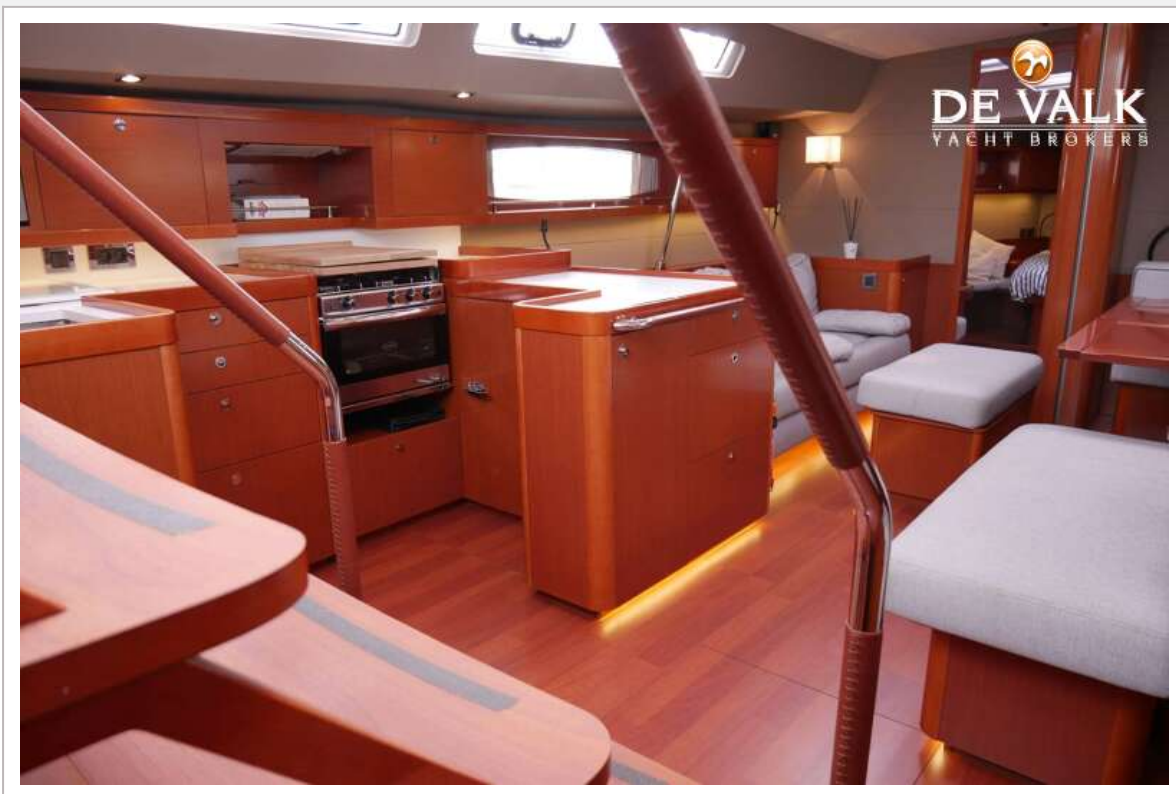


# BENETEAU OCEANIS 60





# BENETEAU OCEANIS 60

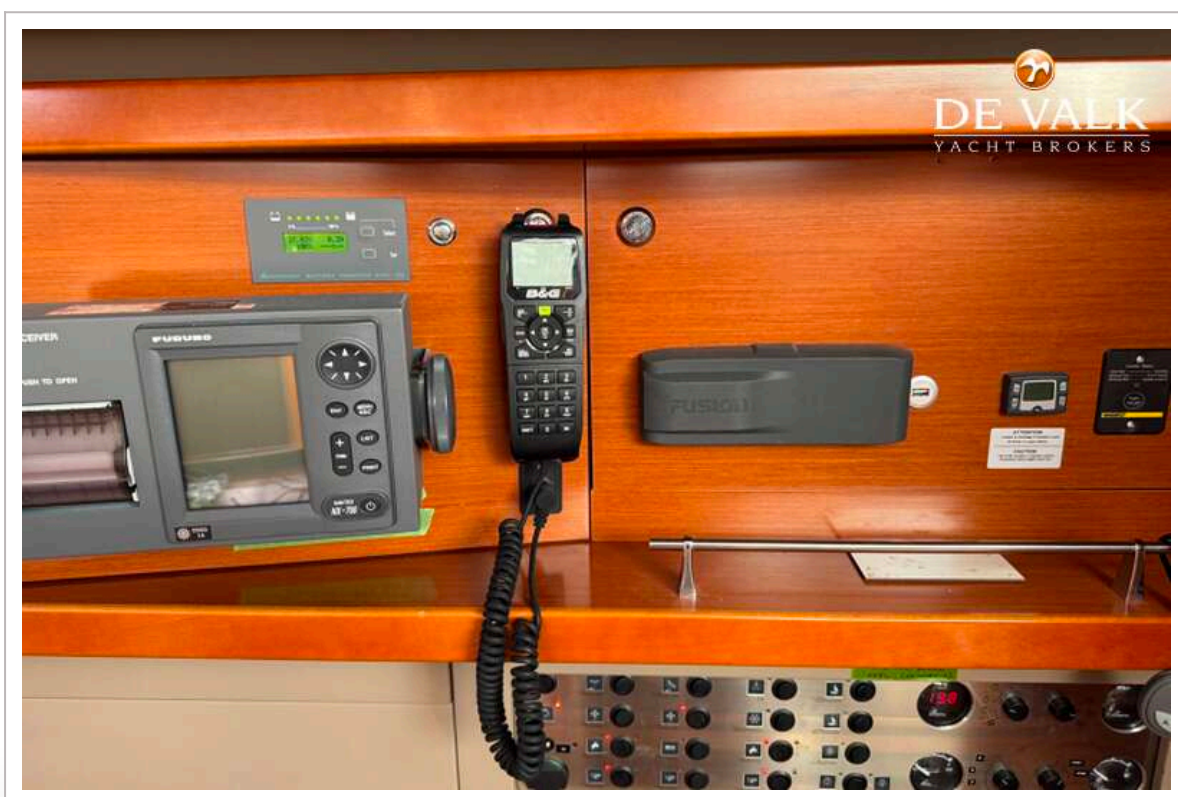


# BENETEAU OCEANIS 60

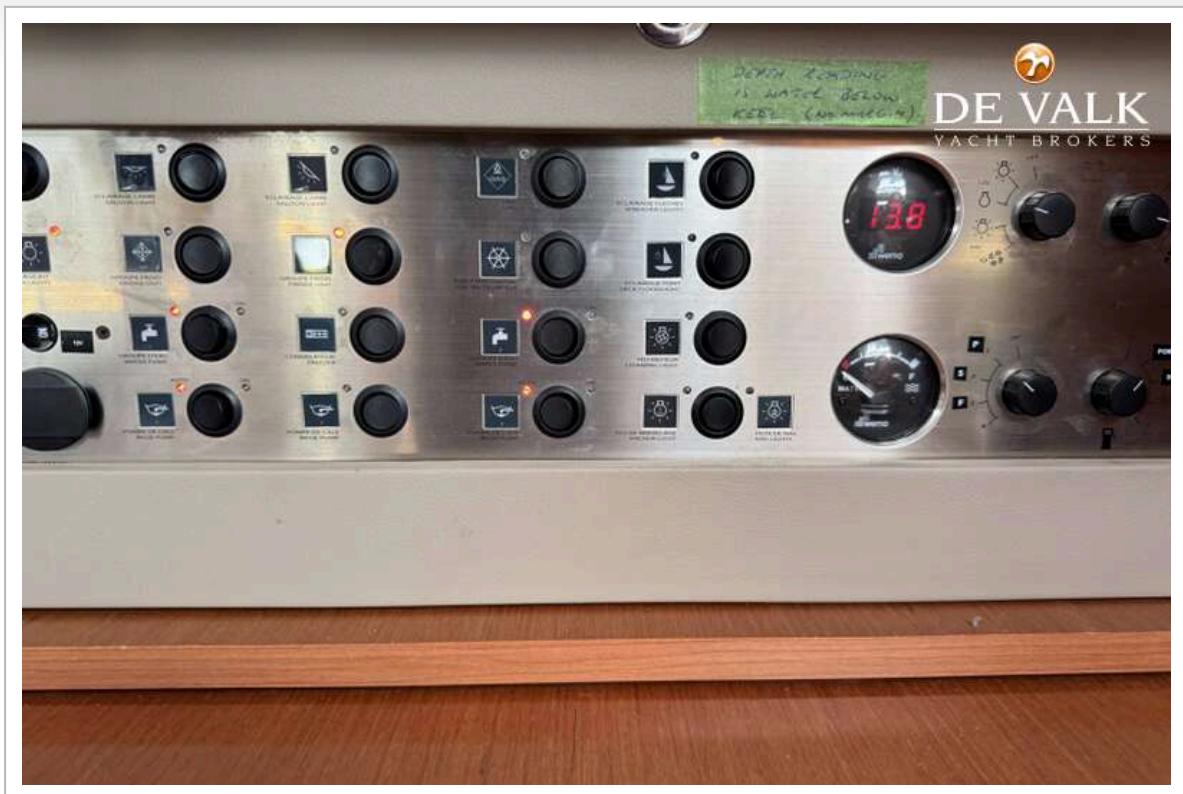




# BENETEAU OCEANIS 60

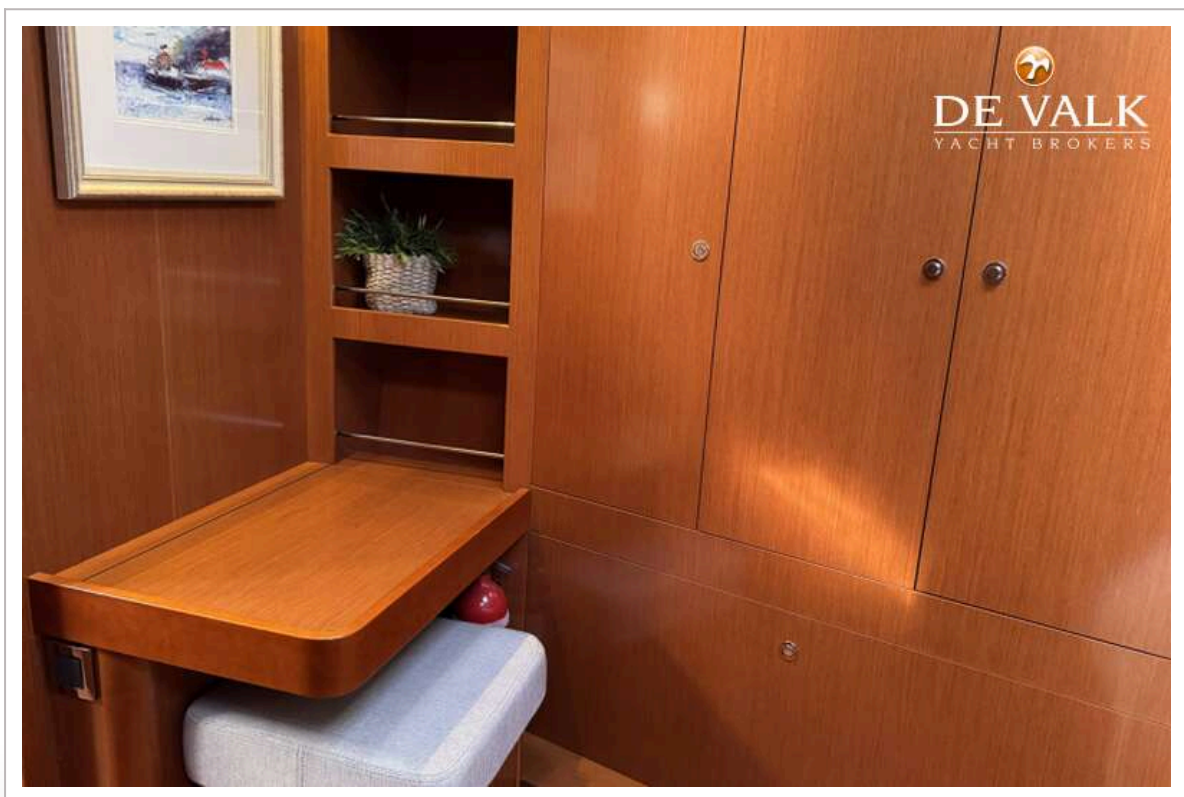
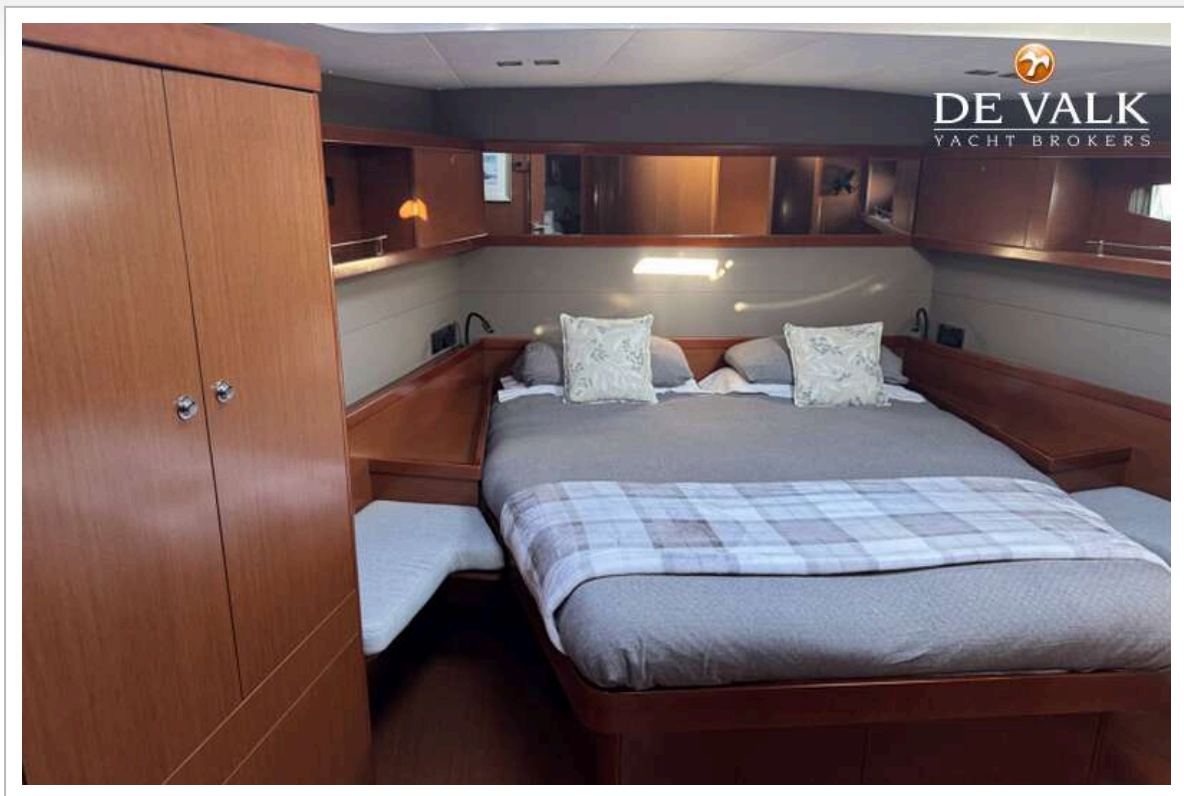


# BENETEAU OCEANIS 60

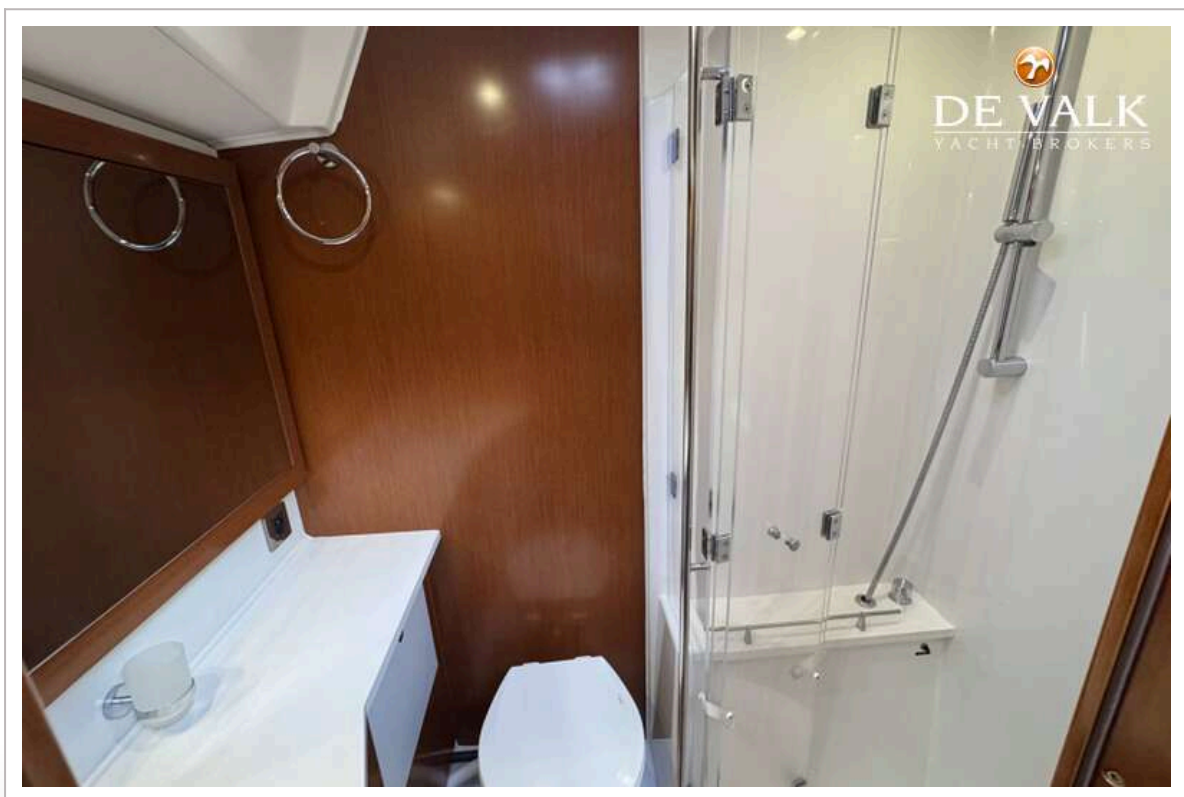
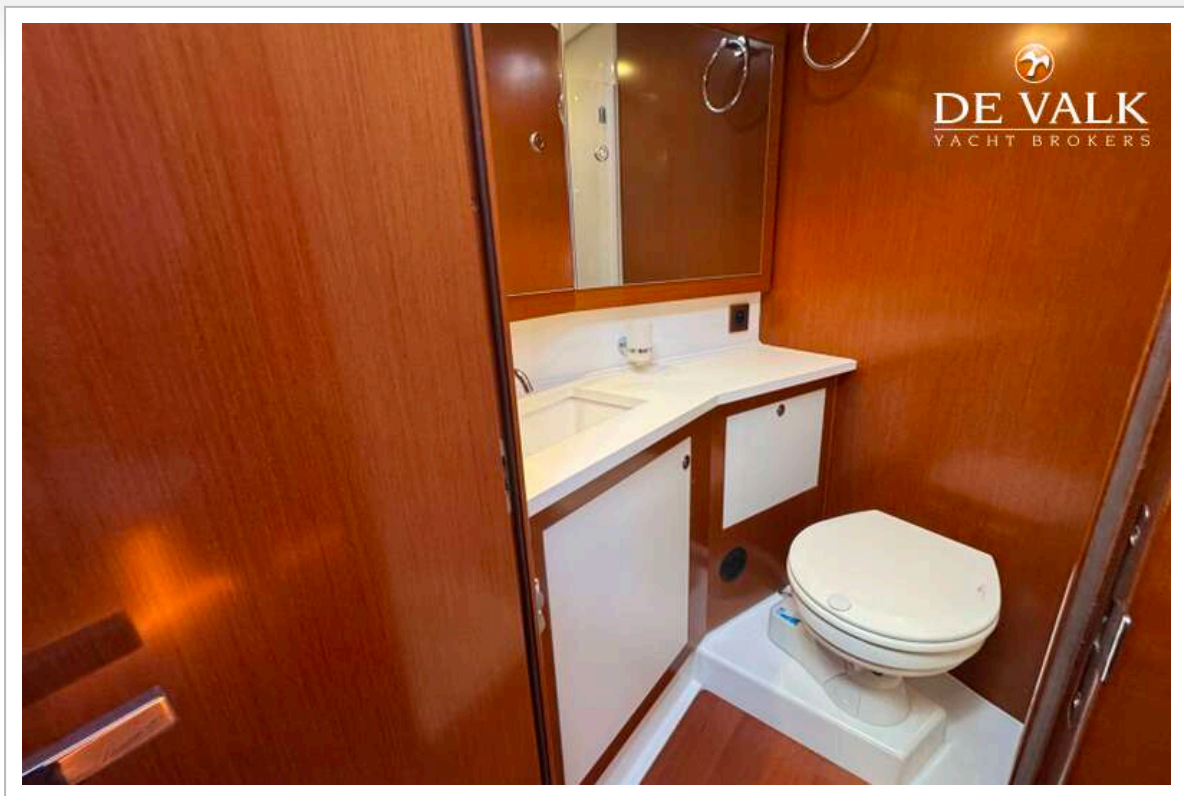




# BENETEAU OCEANIS 60

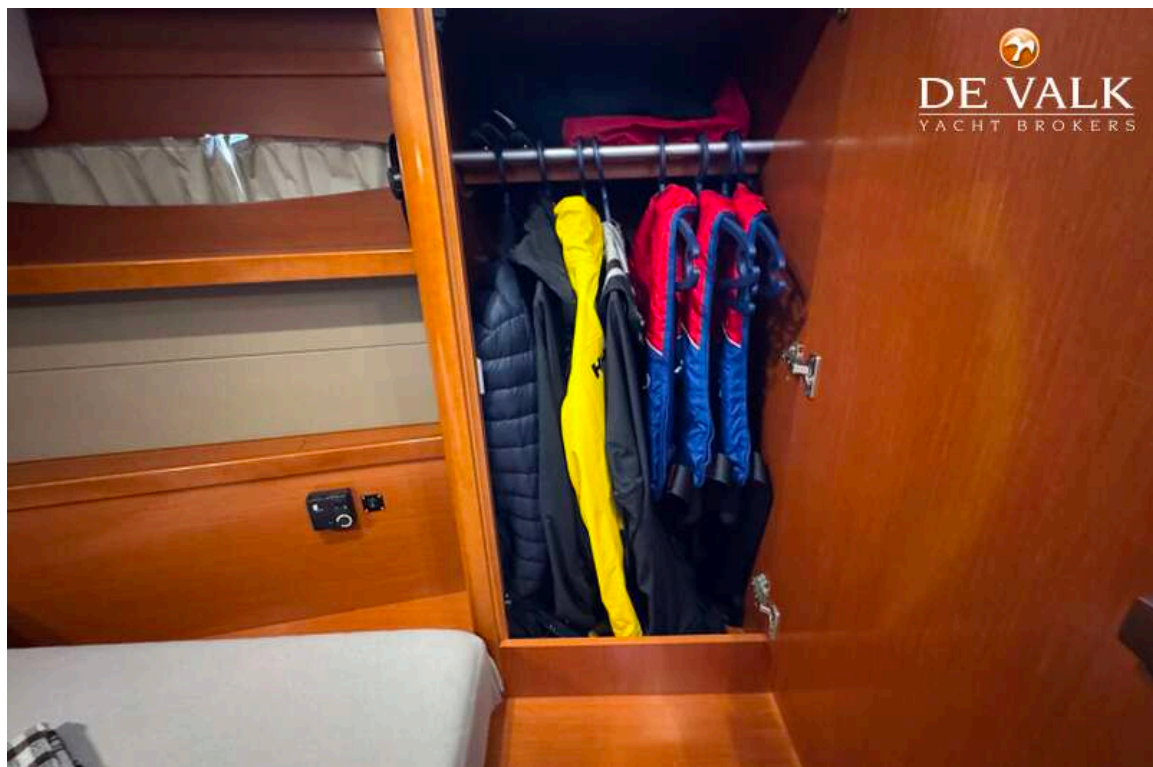
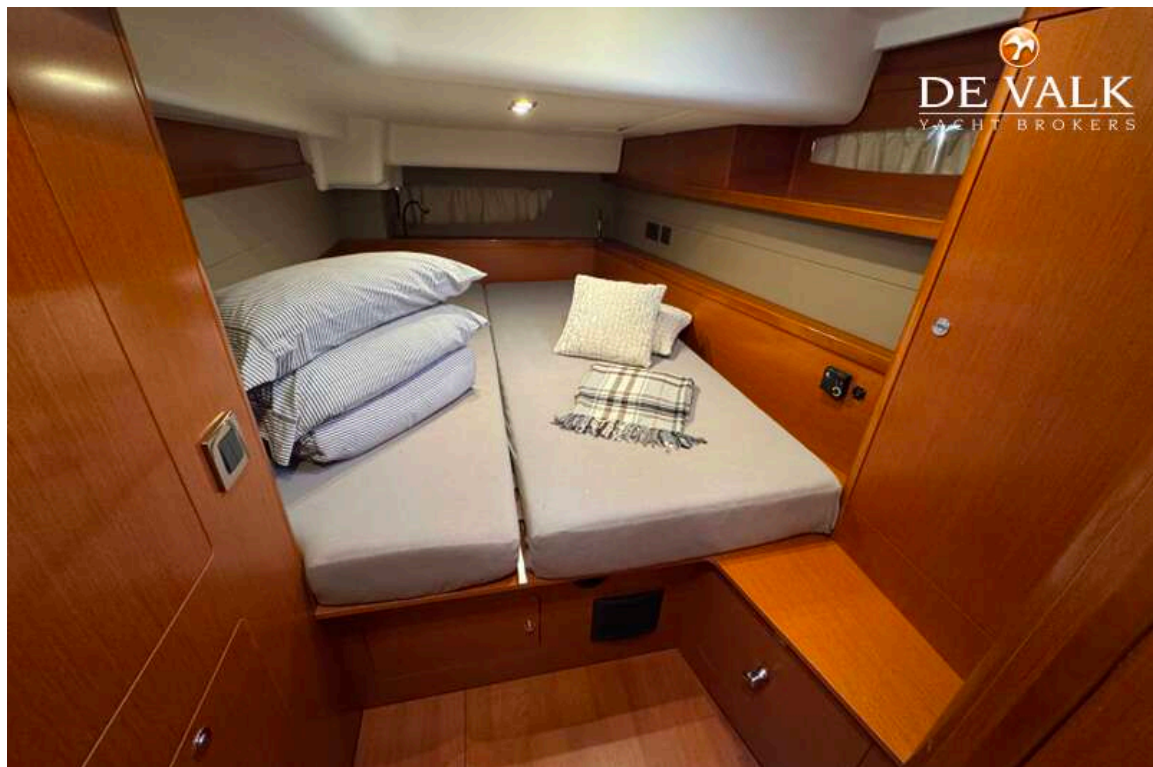


# BENETEAU OCEANIS 60

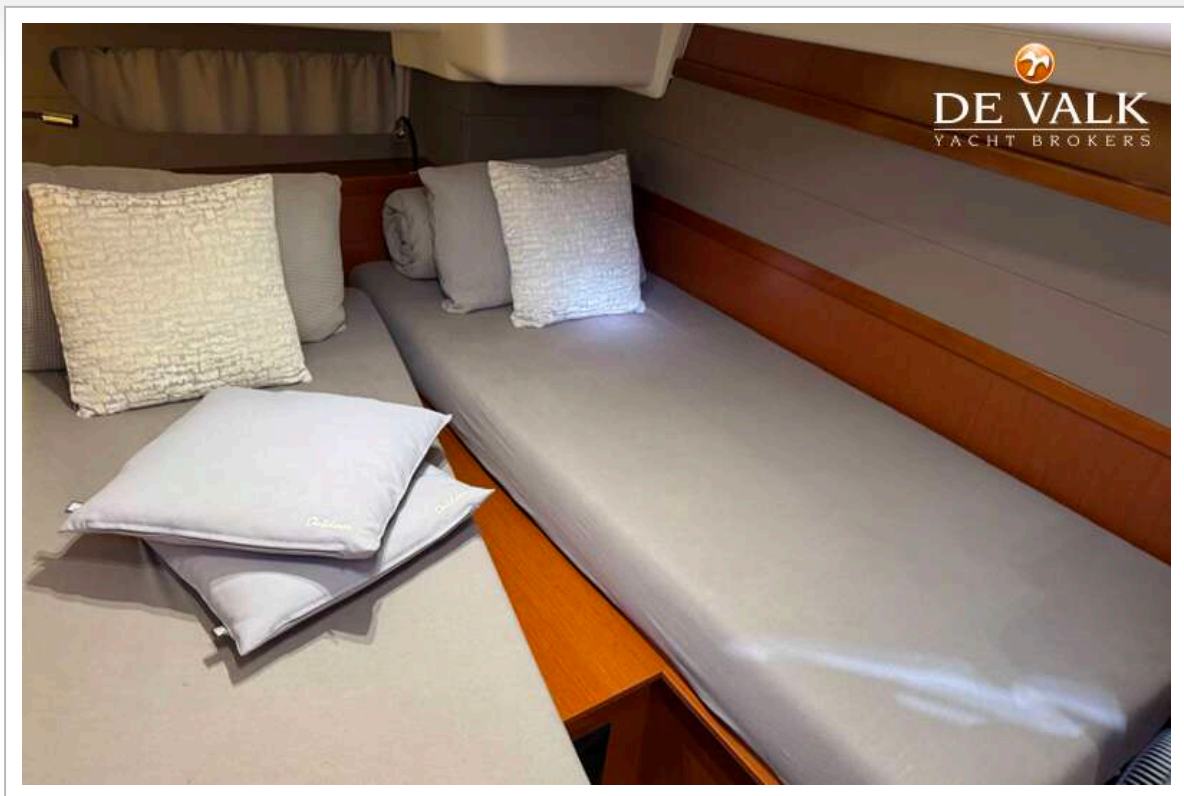




# BENETEAU OCEANIS 60

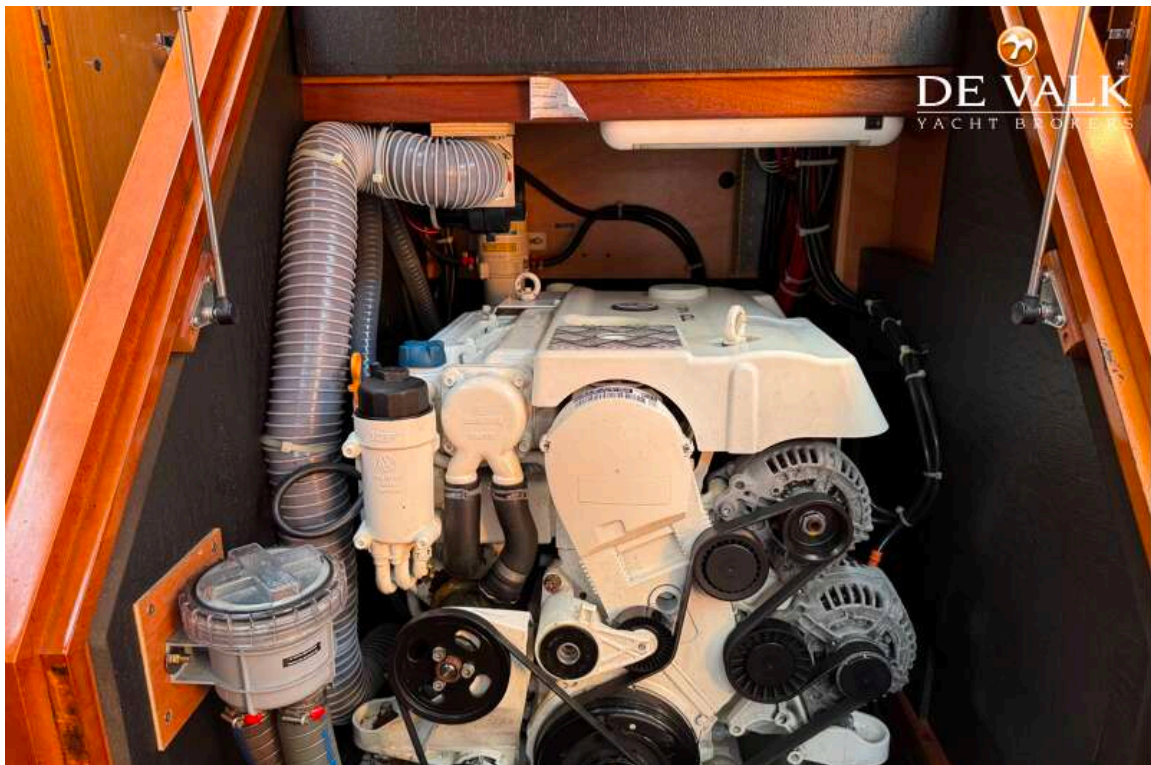


# BENETEAU OCEANIS 60





# BENETEAU OCEANIS 60



# BENETEAU OCEANIS 60

