



DE VALK
YACHT BROKERS



HALLBERG RASSY 49



DE VALK
YACHT BROKERS

BROKER'S COMMENTS

Classic blue water sailor, built from 1982 - 1997 in 89 units. The HR49 offers comfort and a generous amount of space. A fantastic sailor even in the harshest conditions. It is kept in excellent condition. Many important parts have been renewed on this yacht, so she is ready for all new plans! A perfect sailor, whether for cruises or long trips. This HR49 changed its first owner in 2015. Under the current owner, many technical overhauls have been carried out over the last 9 years. In 2018, it was converted in Sweden for over €190,000. This well-maintained ship is now on its way to the Med!

Maarten de Kroon

SPECIFICATIONS

Dimensions	14.96 x 4.42 x 2.20 (m)	Builder	Hallberg Rassy Varvs AB
Built	1983	Cabins	3
Material	GRP	Berths	7
Engine(s)	1 x Volvo Penta TMD40A diesel	Hp/Kw	124 (hp), 91.26 (kw)
Asking price	€ 299.000 (VAT Exempt)	Lying	Malaysia

CONTACT

Sales office	De Valk Asia	Telephone	+65 826 679 95
Address	Penang region Penang Malaysia	E-mail	asia@devalk.nl

DISCLAIMER

These particulars are given in good faith as supplied but cannot be guaranteed.



HALLBERG RASSY 49

GENERAL

Model	HALLBERG RASSY 49
Type	sailing yacht
LOA (m)	14,96
Beam (m)	4,42
Draft (m)	2,20
Headroom (m)	2,00
Year built	1983
Launched	1984
Builder	Hallberg Rassy Varvs AB
Country	Sweden
Designer	Olle Enderlein / Christoph Rassy
Displacement (t)	18
Net tonnage	18
Hull material	GRP
Hull colour	white
Hull shape	S-bilged
Keel type	long keel
Superstructure material	GRP
Rubbing strake	stainless steel
Deck material	GRP
Deck finish	teak 2018
Superstructure deck finish	teak 2018
Cockpit deck finish	teak 2018
Antifouling (year)	2023
Dorades	yes
Window frame	aluminium
Window material	polycarbonate
Deckhatch	yes
Portholes	12x
Fuel tank (litre)	stainless steel 400



Fuel tank 2 (litre)	stainless steel 350
Level indicator (fuel tank)	Philippi PSL
Freshwater tank (litre)	GRP 1400
Level indicator (freshwater)	Philippi PSL
Blackwater tank (litre)	stainless steel
Blackwater tank extraction	deck extraction + uw line
Wheel steering	cable steering
Outside helm position	cable steering
Emergency tiller	yes

ACCOMMODATION

Cabins	3
Berths	7
Interior	mahogany
Floor	teak and holly
Headroom saloon (m)	200 cm
Air-conditioning	single cycle airco Stand alone
Navigation center	yes
Chart table	yes
Aft Cabin	yes
Dinette	yes
Sliding door to cockpit	yes
Galley	yes
Countertop	corian
Sink	stainless steel Double
Cooker	induction 2 burner
Oven	Electric
Fridge	220 l top loading in galley, separate Domestic in 3rd cabin
Freezer	Under sofa
Hot water system	220V + engine 75 l
Water pressure system	electrical



HALLBERG RASSY 49

Manual and/or foot pump	Sea water
Kettle	yes
Hot water tap	yes
Crockery	yes
Owners cabin	double bed + single bed
Bed length (m)	205 cm
Wardrobe	hanging/drawers/shelves
Bathroom	en suite
Toilet	en suite
Toilet system	electric
Wash basin	in the bathroom
Shower	en suite
Guest cabin 1	v-bed
Bed length (m)	205 cm
Wardrobe	hanging/drawers/shelves
Bathroom	shared
Toilet	shared
Toilet system	electric
Wash basin	at the toilet
Shower	shared
Guest cabin 2	bunk bed
Bed length (m)	205 cm
Wardrobe	hanging/drawers/shelves
Bathroom	shared
Toilet	shared
Toilet system	electric
Wash basin	at the toilet
Shower	shared
Washing machine	3.5 kg in aft head

MACHINERY



HALLBERG RASSY 49

No of engines	1
Make	Volvo Penta
Type	TMD40A
HP	124
kW	91.26
Fuel	diesel
Year installed	1983
Year of overhaul	2021
Maximum speed (kn)	9
Cruising speed (kn)	7
Consumption (l/hr)	5
Range (nm)	700
Engine hours	5000
Engine cooling system	freshwater heat exchanger
Drive	shaft
Engine controls	bowden cable
Gearbox	mechanical
Bowthruster	electric Vetus 3kW
Propeller type	feathering Maxprop
Propeller blades	4
Propeller shaft material	stainless steel
Manual bilge pump	yes
Electric bilge pump	2 x
Bilge alarm	yes
Generator	wet exhaust Whisperpower 4.4 KVA (2022)
Running hours generator	400
Generator 2	dry exhaust Genergy Limited 1500i
Start battery	2023, 120 Ah AGM 12v
Service battery	2023, 6 x 120 Ah AGM 24v
Generator battery	2021, 90 Ah
Bowthruster battery	4 x 90 Ah AGM 24v
Windlass battery	Same as bowthruster



HALLBERG RASSY 49

Battery monitor	Philippe PSL
Battery charger	2x Mastervolt 1x Victron
Inverter	Sterling 1500 W
Battery charger/inverter	yes
Solar panel	Victron 4x 170W 2 x MPPT Victron
Shorepower	with cable
Watermaker	ECHOTec 960-AML-2S

NAVIGATION

Compass	Plastimo
Depth sounder/log	Raymarine ST60
Windset	Raymarine ST60
VHF	Icom IC-M423G
VHF handheld	Icom IC-M25
Autopilot	Raymarine ACU-400
Rudder angle indicator	Raymarine
Radar	Raymarine Broadband 4G (2011)
Radar/GPS/plotter	Raymarine Axiom 12 Pro (2020)
Electronic chart(s)	Global
AIS transponder	Raymarine 650
EPIRB	McMurdo G5
Navigation lights	LED
Extra info	Iridium Go with external antenna (2021)

EQUIPMENT

Fixed windscreen	yes
Sprayhood	2023
Bimini	yes
Sun awning	yes
Cockpit cushions	yes
Cockpit table	yes



HALLBERG RASSY 49

Bathing platform	yes
Boarding ladder	yes
Deck shower	yes
Anchor	Ultra Anchor 35 kg SS
Anchor chain	12mm, 110m
Anchor 2	25 kg
Chain counter	MZ Electronic EV-030
Windlass	electrical Lofrans Albatros 24v 2000W
Capstan	yes
Deck wash	Cold fresh water
Dinghy	rigid inflatable Joker
Outboard	Tohatsu 9.8, 2022
Outboard support	yes
Davits	stainless steel
Davits controls	manual
Sea railing	wire
Grab rail (superstructure)	stainless steel
Railing side opening gates	yes
Pushpit	yes
Pulpit	yes
Life raft	valise (or bag)
Life raft (pers)	6
Lifejackets	yes
Safety harness	yes
Lifebuoy	yes
Horn	yes
Binocular	yes
Radar reflector	yes
Fenders	yes
Mooring lines	yes
Spare parts	yes
Tools	yes



Radio	Pioneer
Cockpit speakers	yes
Speakers in salon	yes
Clock - barometer	yes
Fire extinguisher	yes

RIGGING

Rigging	sloop-cutter
Standing rigging	wire 2013
Brand mast	Reckmann
Material mast	aluminium coated
Spreaders	2 x 2
Keel stepped mast	yes
Mainsail	UK sails (2017)
Stoway mast	Reckmann hydraulic
Cutterstay	yes
Jib	Cutter UK Sails (2015)
Genoa	UK Sails (2017)
Genoa furler	Reckmann hydraulic
Cutter furler	Furlex
Code Zero	Beilken with Bartels furler
Staysail	Cutter UK Sails (2015)
Reefing System	main in-mast furling
Backstay adjuster	hydraulic Naftex
Boomvang	hydraulic Naftex
Primary sheet winch	2 x Lewmar 44ST 2S
Secondary sheet winch	2 x Lewmar 54ST 2S
Genoa sheetwinches	2 x Lewmar 66ST 2S electric
Halyard winches	At the mast, 4x Lewmar
Spi-pole	aluminium



HALLBERG RASSY 49



HALLBERG RASSY 49



HALBERG RASSY 49



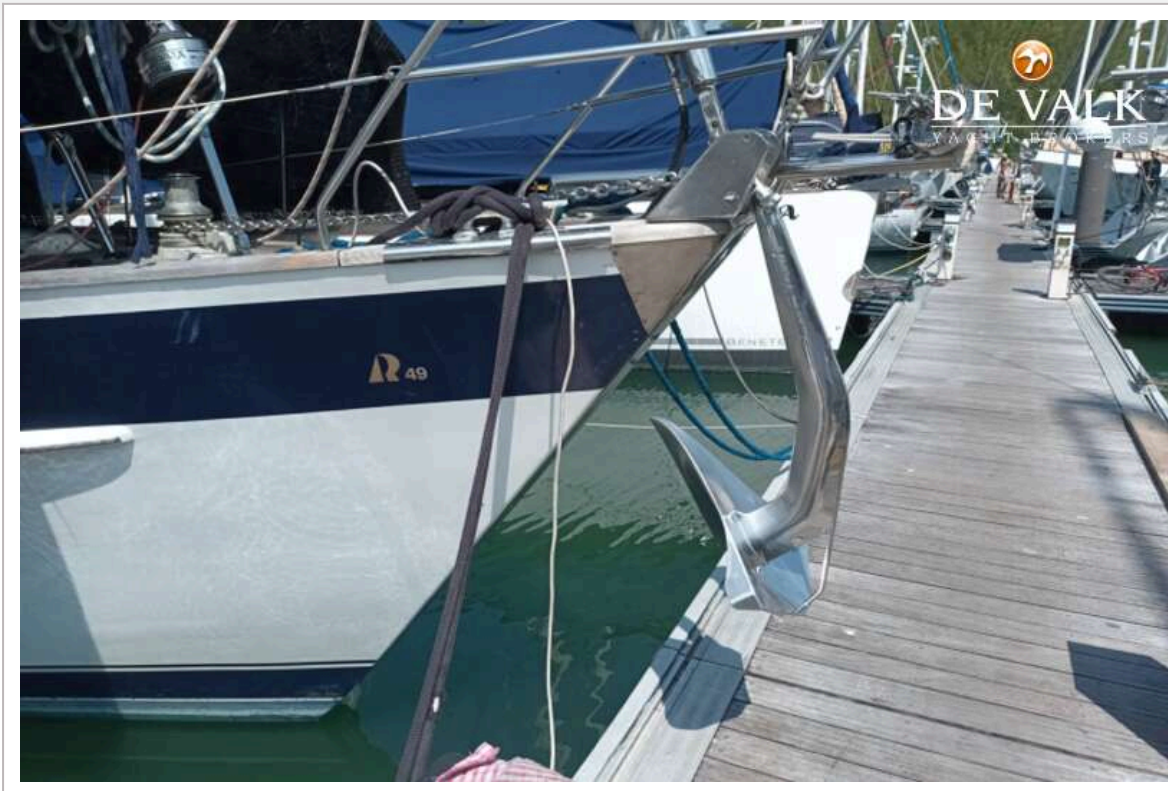
HALBERG RASSY 49



HALLBERG RASSY 49



HALLBERG RASSY 49



HALBERG RASSY 49



HALLBERG RASSY 49



HALBERG RASSY 49



HALLBERG RASSY 49



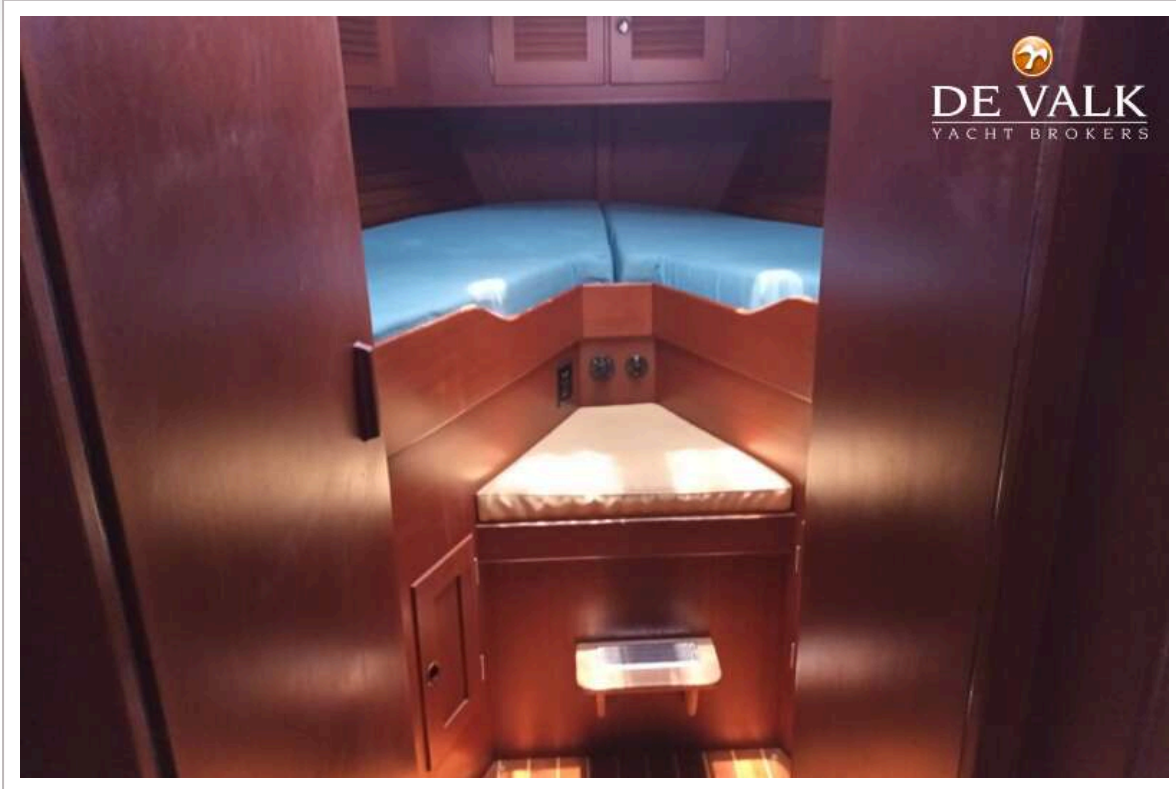
HALLBERG RASSY 49



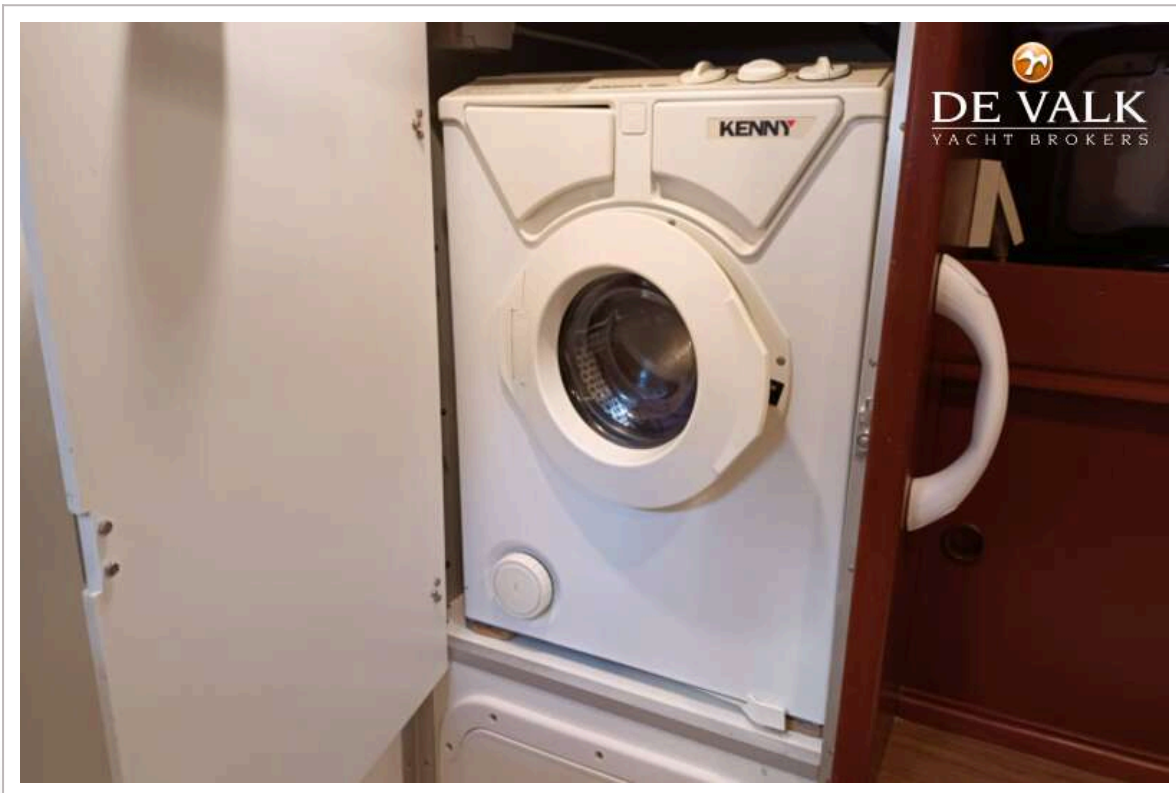
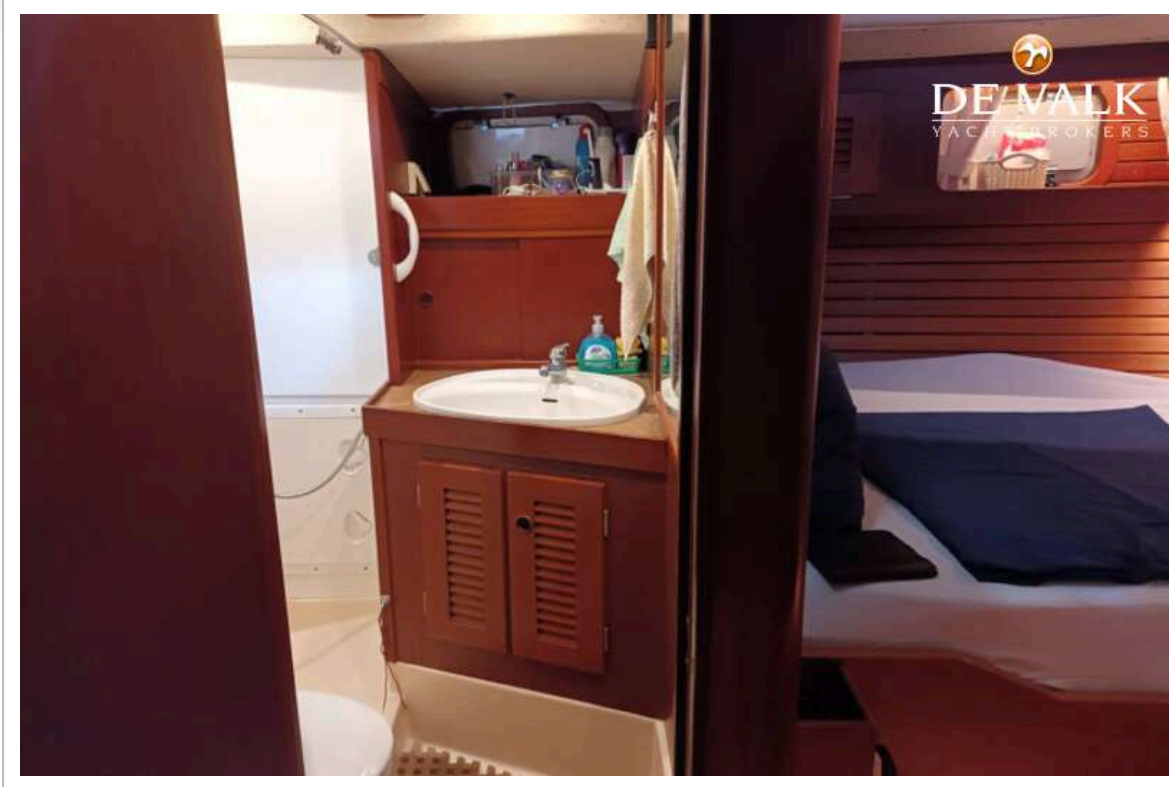
HALLBERG RASSY 49



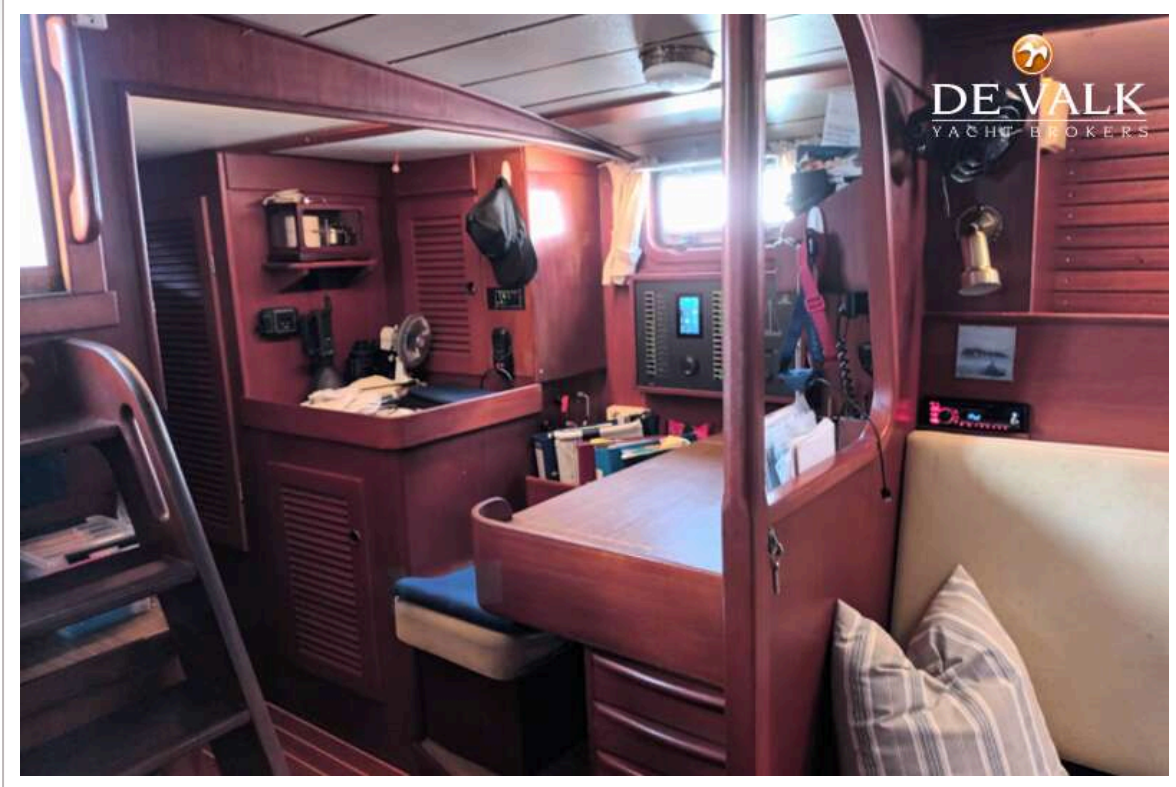
HALLBERG RASSY 49



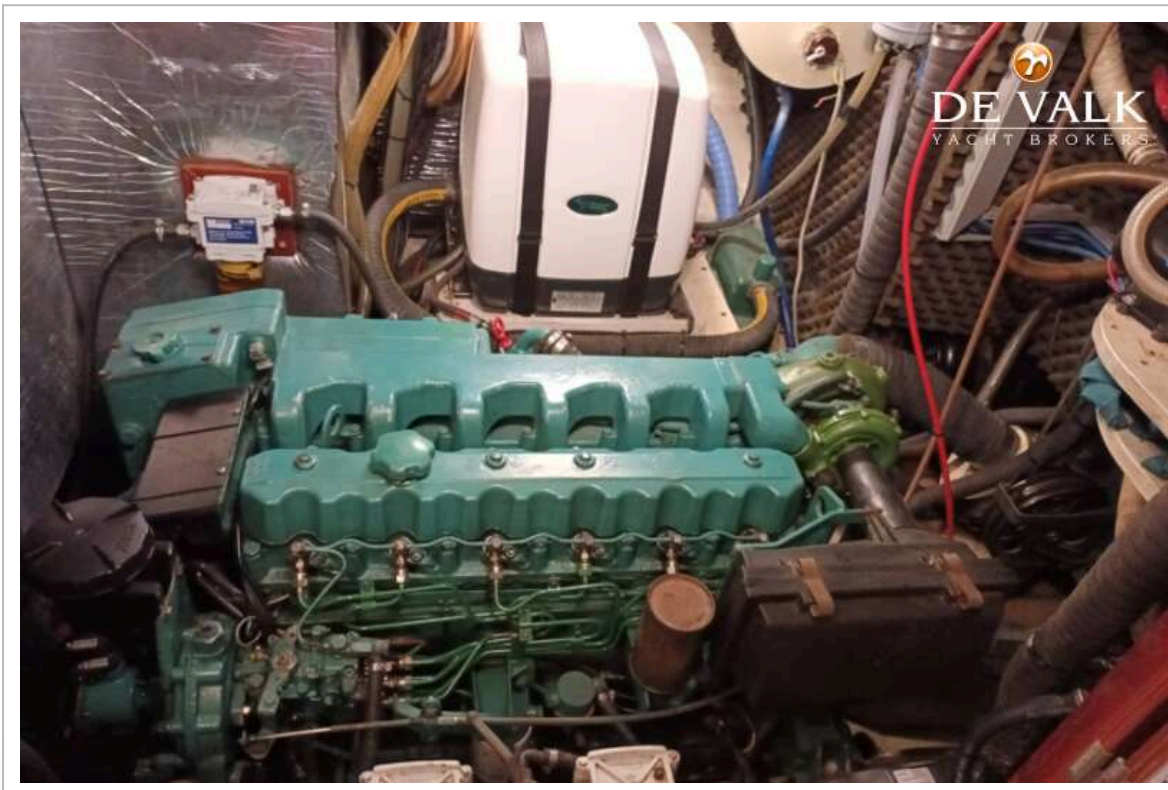
HALLBERG RASSY 49



HALLBERG RASSY 49



HALLBERG RASSY 49



HALLBERG RASSY 49

