



AQUASTAR 38

AQUASTAR 38

BROKER'S COMMENTS

The Aquastar 38 of 2006 is a semi-displacement vessel, which makes her very seaworthy. With a Caterpillar of 510 hp you will be quickly at your destination if necessary. Once you have arrived at your destination, you can easily maneuver to your berth with the bow and stern thruster with remote control. The owner has renewed a lot in the past years.

Mark Hesselmans

SPECIFICATIONS

| | | | |
|---------------------|---------------------------|----------------|--------------------------|
| Dimensions | 11.85 x 3.80 x 1.10 (m) | Builder | Aqua-Star Ltd Guernsey |
| Built | 2006 | Cabins | 2 |
| Material | GRP | Berths | 6 |
| Engine(s) | 1 x Caterpillar C9 diesel | Hp/Kw | 510.00 (hp), 375.36 (kw) |
| Asking price | € 159.000 (VAT Paid) | Lying | at sales office |

CONTACT

| | | | |
|---------------------|--|------------------|----------------------|
| Sales office | De Valk Loosdrecht | Telephone | +31 35 582 90 30 |
| Address | 't Breukeleveense Meentje 6 1231 LM Loosdrecht / Wijdmeren The Netherlands | E-mail | loosdrecht@devalk.nl |

DISCLAIMER

These particulars are given in good faith as supplied but cannot be guaranteed.



AQUASTAR 38

GENERAL

| | |
|--------------------------------|------------------------|
| Model | AQUASTAR 38 |
| Type | motor yacht |
| LOA (m) | 11,85 |
| Beam (m) | 3,80 |
| Draft (m) | 1,10 |
| Year built | 2006 |
| Builder | Aqua-Star Ltd Guernsey |
| Country | United Kingdom |
| Designer | Aqua-Star Ltd |
| Displacement (t) | 11 |
| CE norm | C |
| Hull material | GRP |
| Hull colour | white |
| Hull shape | round-bilged |
| Superstructure material | GRP |
| Rubbing strake | rubber |
| Deck material | GRP |
| Deck finish | non-skid moulded in |
| Cockpit deck finish | non-skid moulded in |
| Antifouling (year) | 2023 |
| Window frame | aluminium |
| Window material | glass |
| Deckhatch | yes |
| Portholes | yes |
| Fuel tank (litre) | 600 |
| Fuel tank 2 (litre) | 600 |
| Freshwater tank (litre) | GRP 340 |
| Blackwater tank (litre) | 80 |
| Wheel steering | hydraulic |



ACCOMMODATION

| | |
|------------------------------|---|
| Cabins | 2 |
| Berths | 6 |
| Interior | mahogany |
| Floor | wood Teak |
| Open cockpit | With led lighting |
| Saloon | yes |
| Headroom saloon (m) | 2,05+/- |
| Heating | diesel ducted hot air Eberspacher Airtronic 4kW |
| Galley | yes |
| Countertop | corian |
| Sink | stainless steel |
| Cooker | Wallas 85DT |
| Oven | Wallas |
| Microwave | Hinari |
| Fridge | yes |
| Hot water system | yes |
| Water pressure system | electrical |
| Owners cabin | double bed |
| Wardrobe | hanging and drawers |
| Bathroom | separate |
| Toilet | separate |
| Toilet system | vacuum |
| Wash basin | in the bathroom |
| Shower | separate |
| Guest cabin 1 | single bed 2x |
| Wardrobe | hanging |

MACHINERY

| | |
|----------------------|-------------|
| No of engines | 1 |
| Make | Caterpillar |



AQUASTAR 38

| | |
|--------------------------|---|
| Type | C9 |
| HP | 510 |
| kW | 375.36 |
| Fuel | diesel |
| Year installed | 2006 |
| Maximum speed (kn) | 22 |
| Cruising speed (kn) | 18 |
| Engine hours | 1507 |
| Engine cooling system | freshwater heat exchanger |
| Drive | shaft |
| Engine controls | electrical |
| Gearbox | hydraulic |
| Bowthruster | electric Side power with remote control |
| Sternthruster | electric Side power with remote control |
| Exhaust | watercooled |
| Propeller type | fixed |
| Propeller shaft material | stainless steel |
| Manual bilge pump | yes |
| Electric bilge pump | yes |
| Bilge alarm | yes |
| Batteries | yes |
| Start battery | yes |
| Service battery | yes |
| Bowthruster battery | yes |
| Battery monitor | Victron Digital Multi Control |
| Battery charger | Victron 120 A |
| Inverter | Victron Multiplus 12V/3000W/120A |
| Shorepower | with cable |
| Trimtabs | Bennett |

NAVIGATION



AQUASTAR 38

| | |
|-----------------|---------------------------------------|
| Compass | Plastimo |
| VHF | Raymarine ray 90 dsc vhf |
| VHF handheld | Icons vhf dsc |
| Autopilot | Raymarine latest auto pilot |
| Radar | Raymarine quantum 2 radar |
| Plotter | Twin Raymarine 9inch axiom Mfd |
| Plotter/GPS | Raymarine xl 18inch axiom Mfd |
| AIS receiver | Raymarine |
| AIS transponder | Raymarine |
| Extra info | Raymarine Satellite TV dome |
| Extra info | Electronic radar reflector with boost |

EQUIPMENT

| | |
|----------------------------|-----------------------------------|
| Window cover | yes |
| Cockpit cushions | yes |
| Cockpit table | yes |
| Bathing platform | yes |
| Boarding ladder | aluminum |
| Bow ladder | yes |
| Anchor | yes |
| Anchor chain | yes |
| Other ground tackle | yes |
| Windlass | electrical |
| Sea railing | stainless steel |
| Grab rail (superstructure) | stainless steel |
| Wiper | yes |
| Horn | yes |
| Fenders | yes |
| Mooring lines | yes |
| TV | Samsung |
| Radio | Fusion Soundsystem with twin zone |



| | |
|--------------------------|-----|
| Speakers in salon | yes |
| Speakers in cabin | yes |
| Auto extinguisher system | yes |



AQUASTAR 38



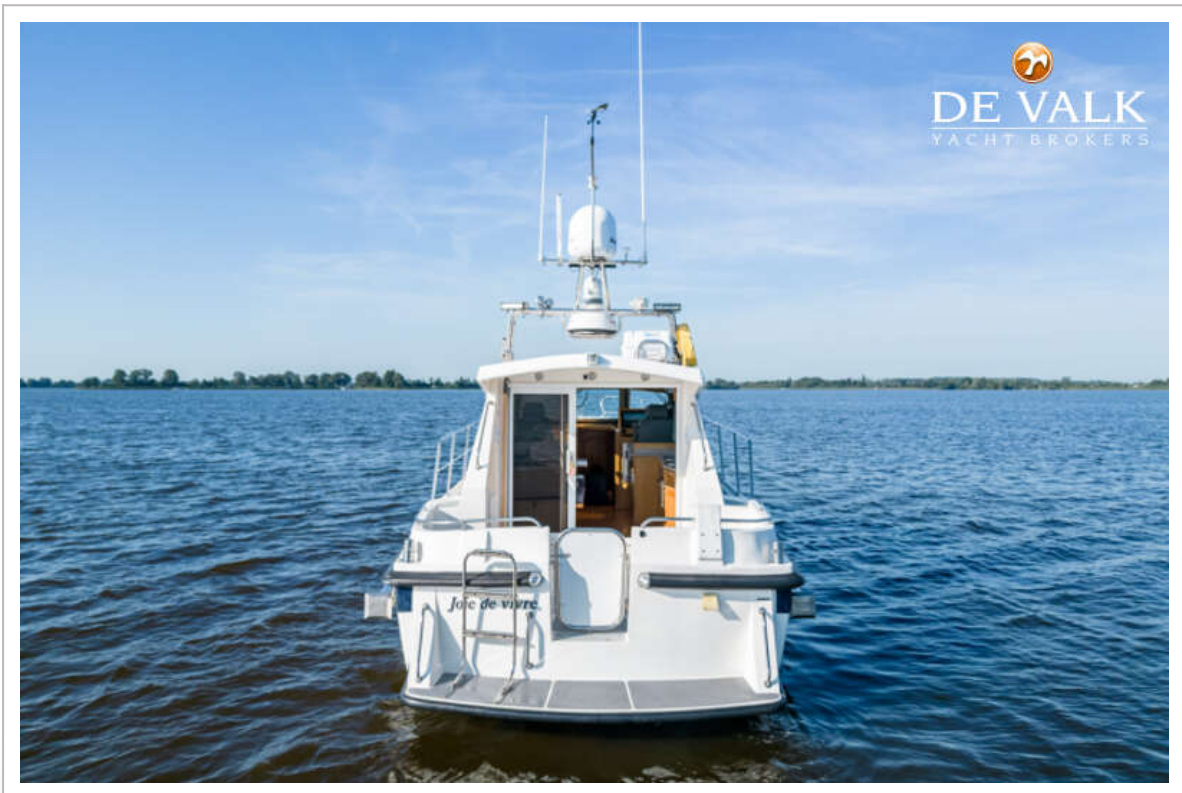
AQUASTAR 38



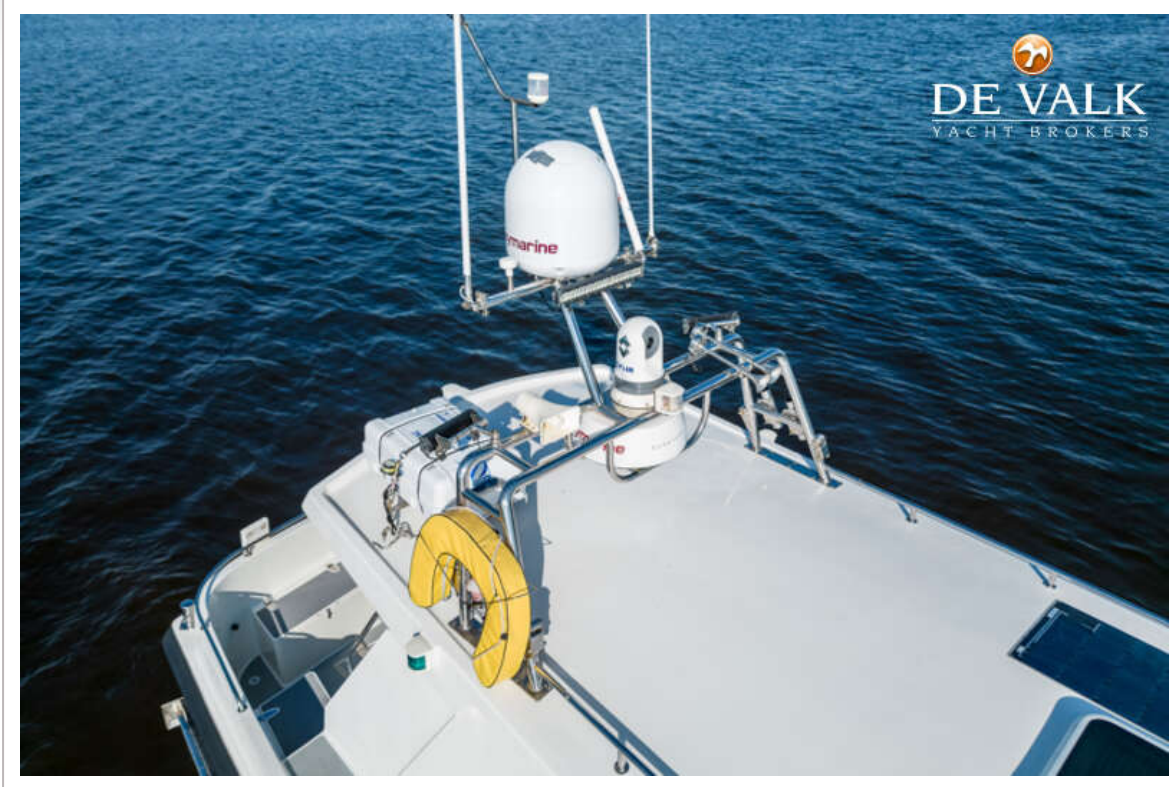
AQUASTAR 38



AQUASTAR 38



AQUASTAR 38



AQUASTAR 38



AQUASTAR 38



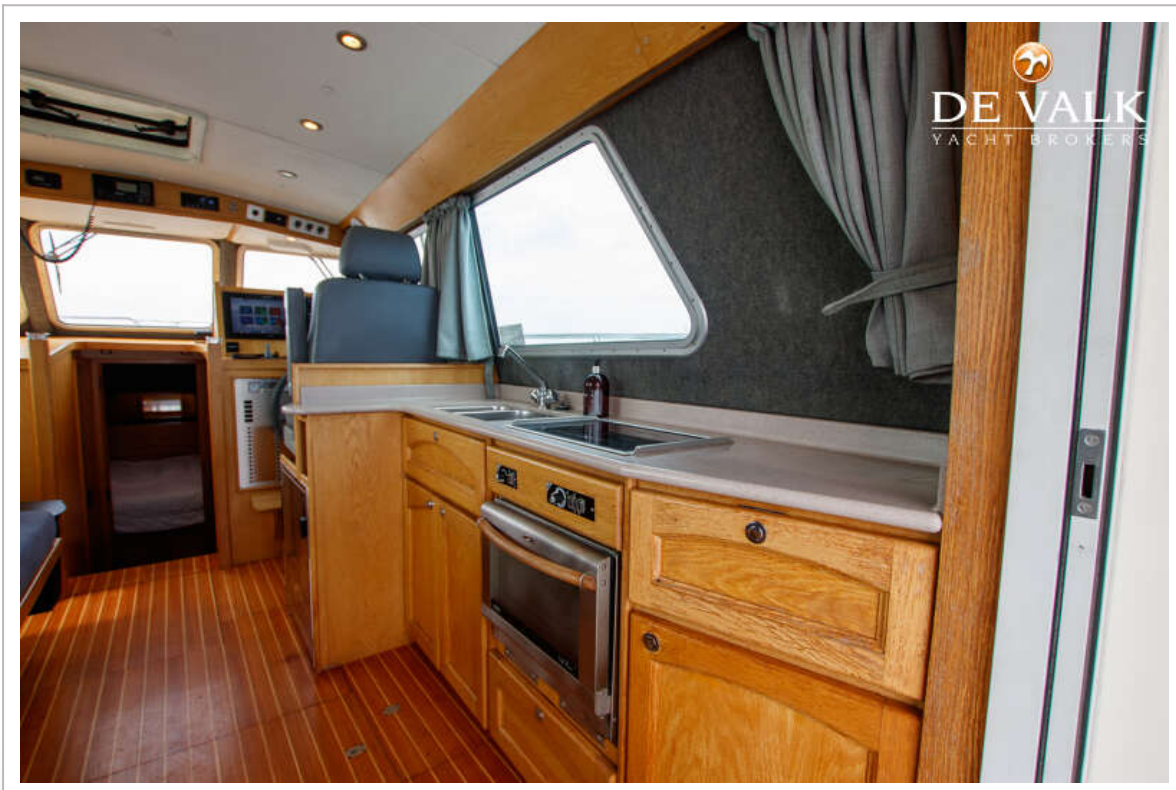
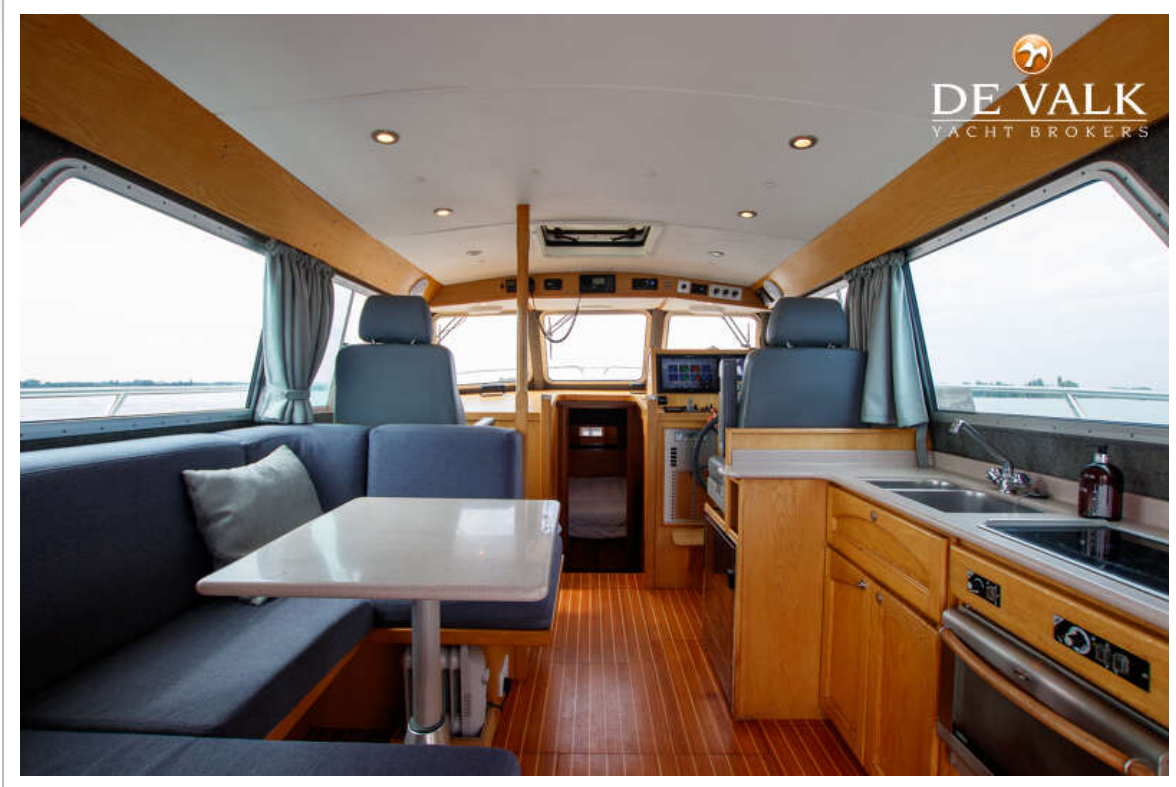
AQUASTAR 38



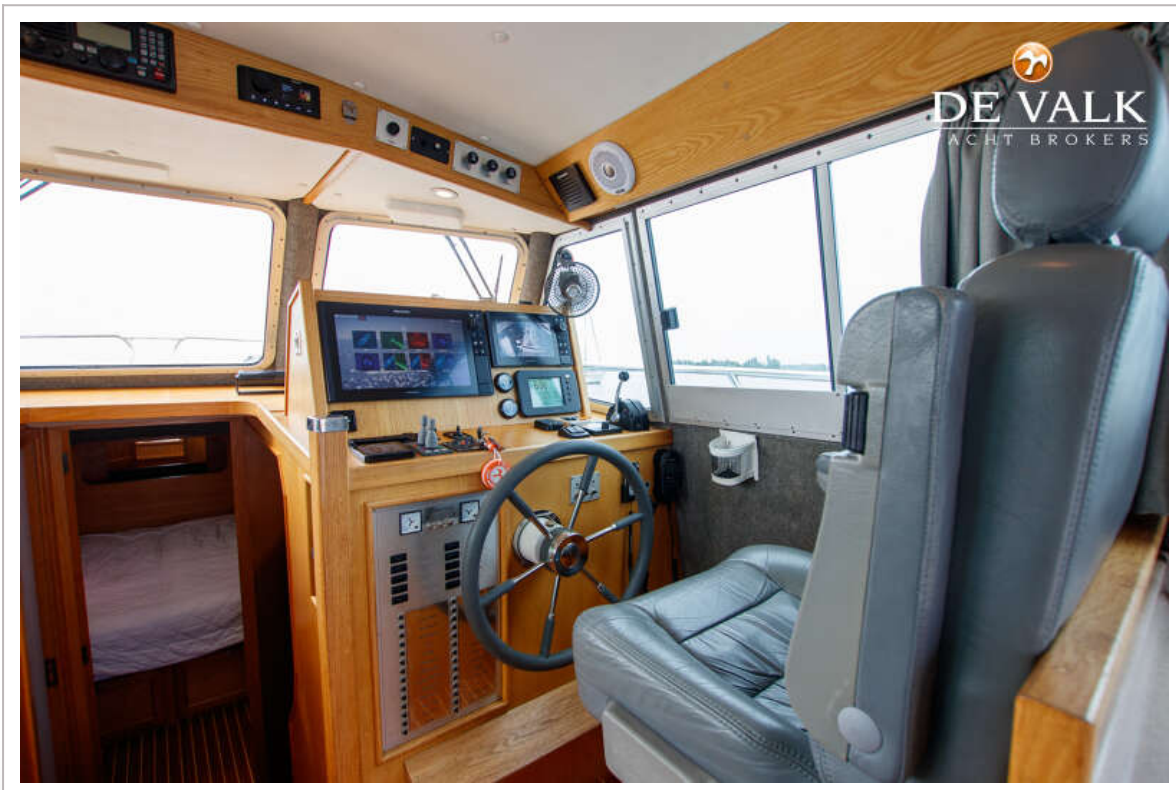
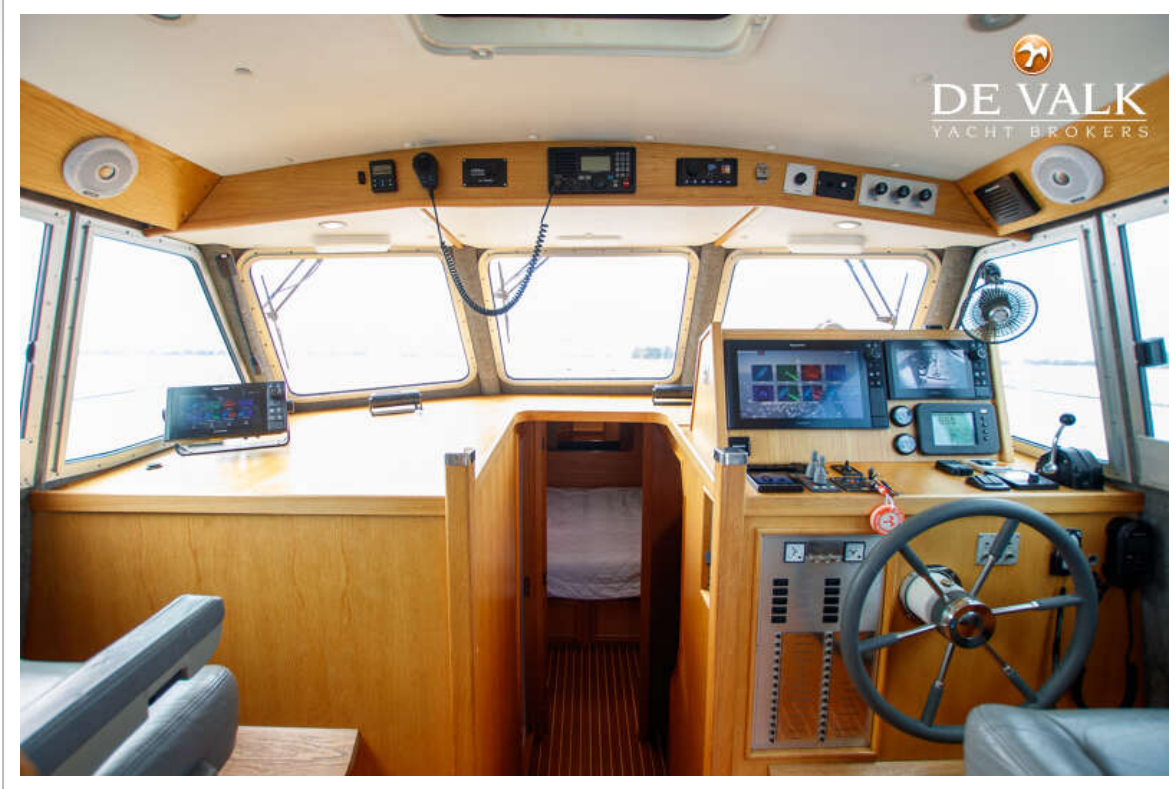
AQUASTAR 38



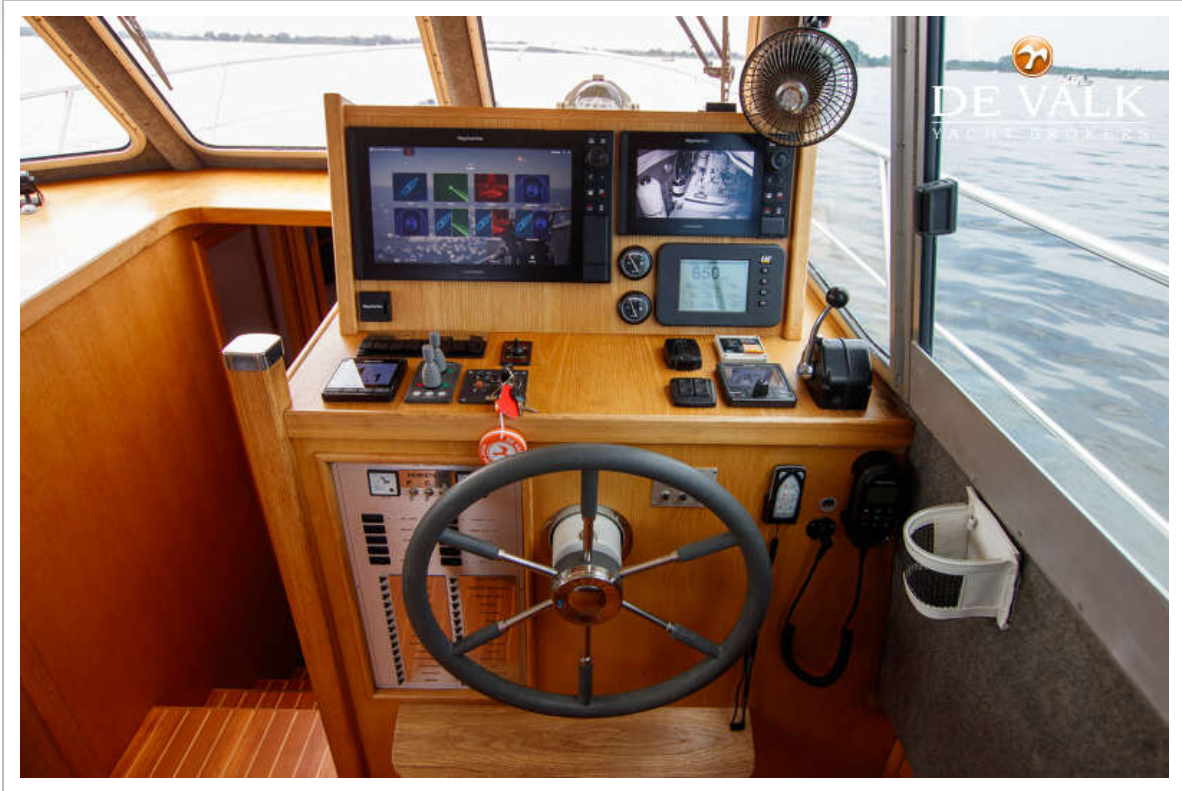
AQUASTAR 38



AQUASTAR 38



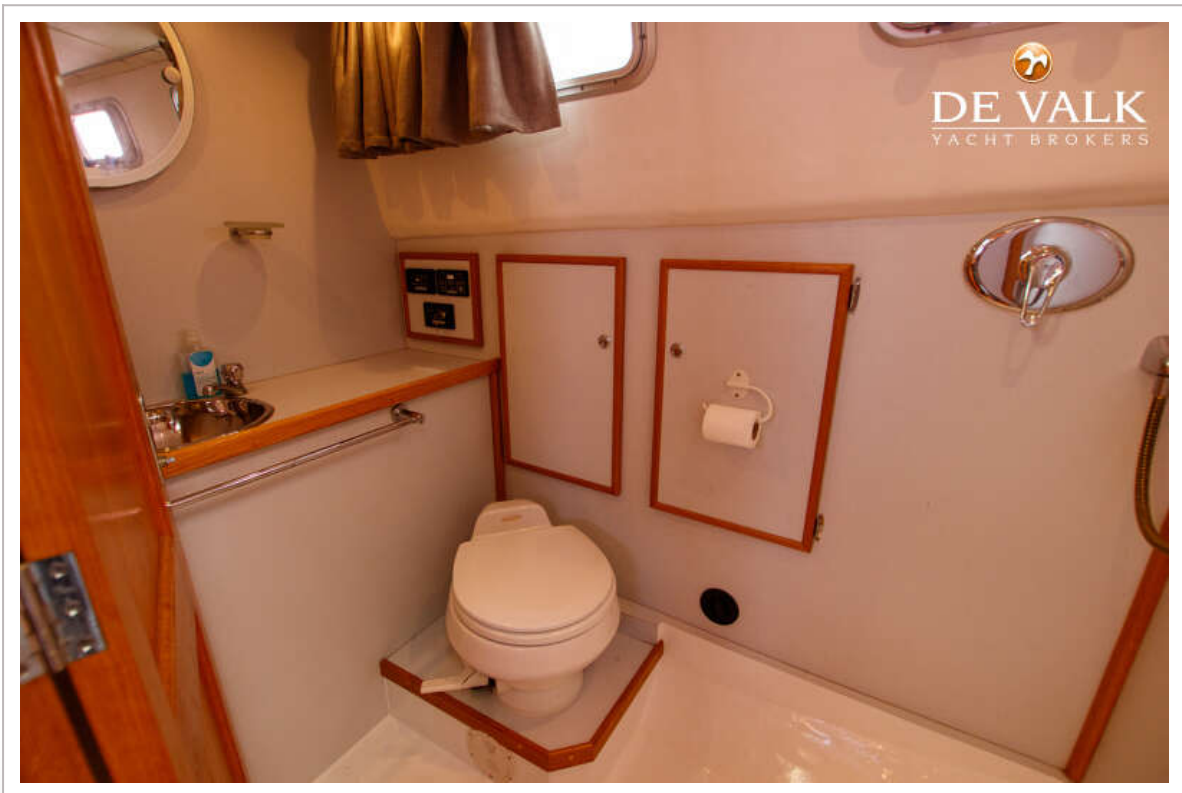
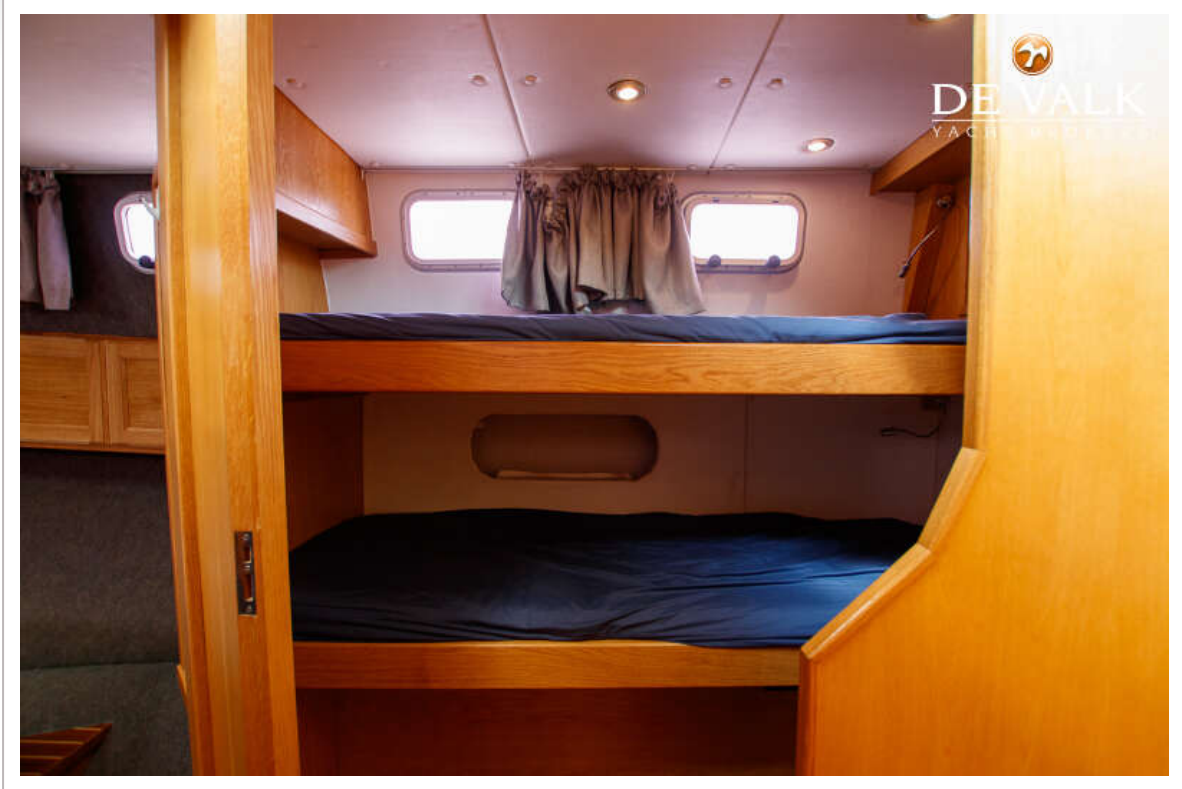
AQUASTAR 38



AQUASTAR 38



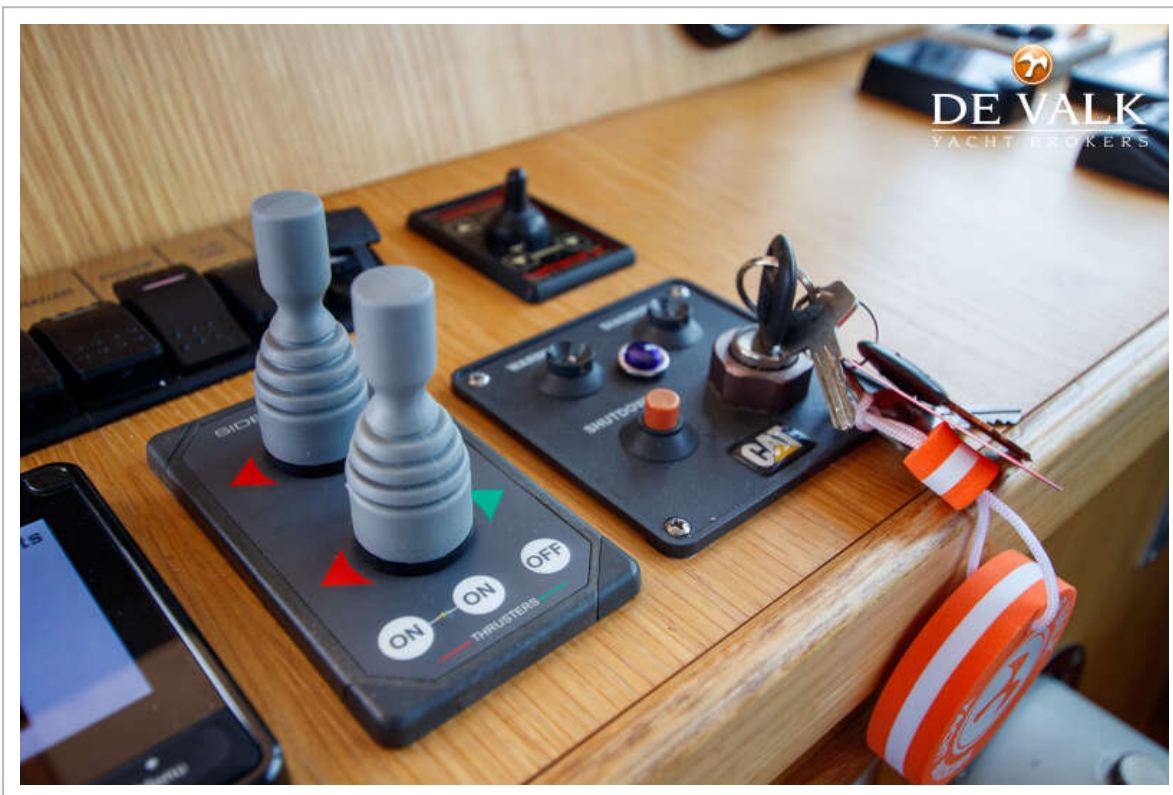
AQUASTAR 38



AQUASTAR 38



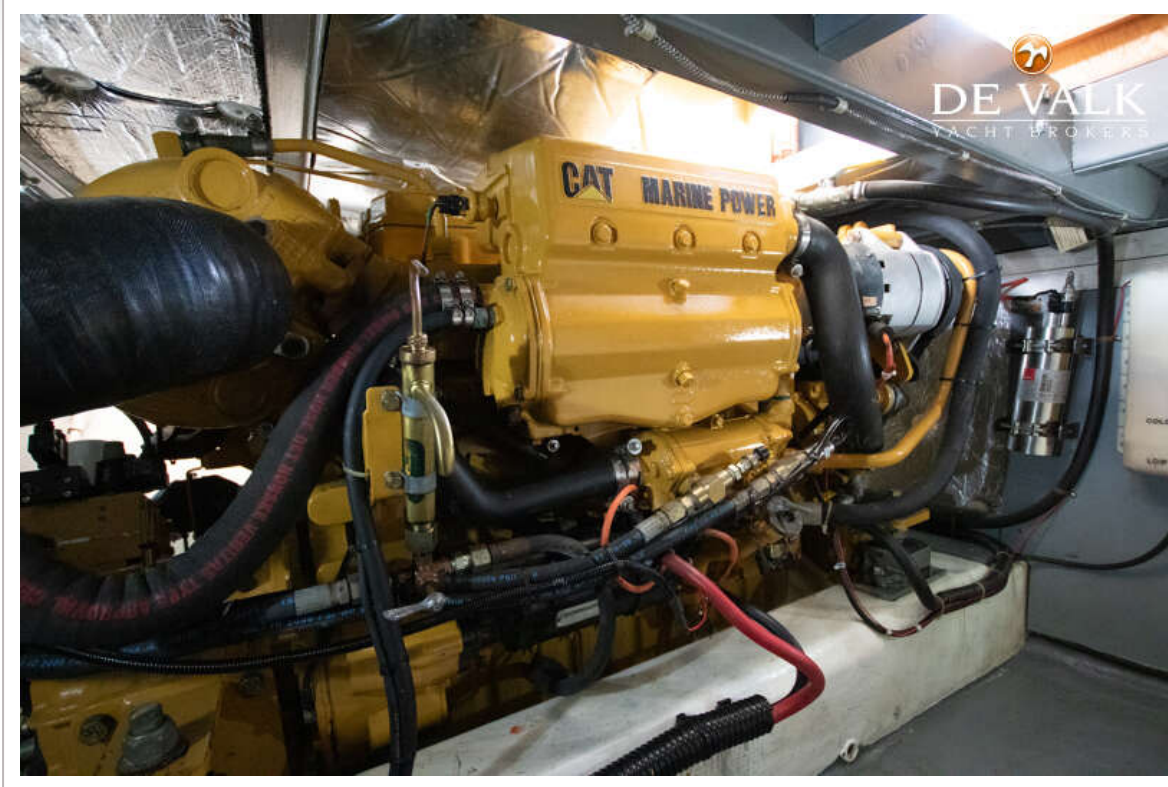
AQUASTAR 38



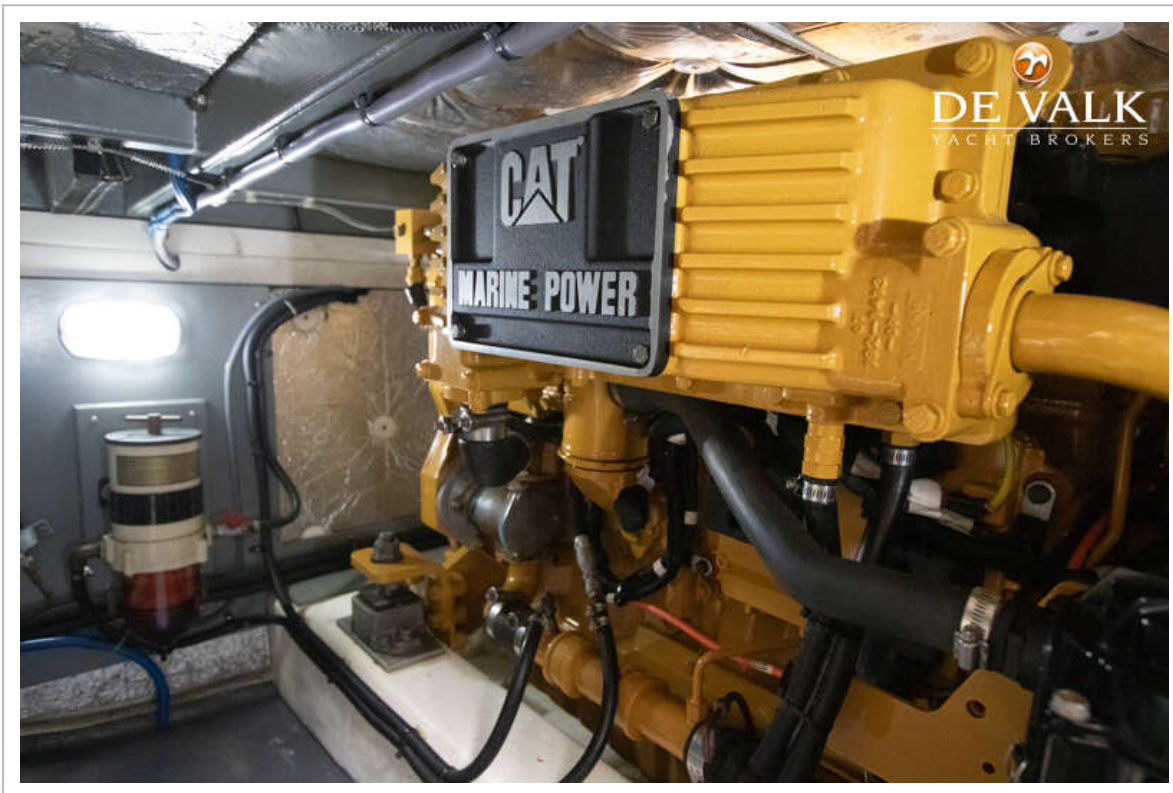
AQUASTAR 38



AQUASTAR 38



AQUASTAR 38



AQUASTAR 38

