



DE VALK
YACHT BROKERS



BEKEBREDE MIRESSE 41



DE VALK
YACHT BROKERS

BEKEBREDE MIRESSSE 41

BROKER'S COMMENTS

The Bekebrede Miresse 41 is a beautiful classic dutch built steel Ketch designed by Martin Bekebrede and the hull was built by the reknown Bloemsma in Makkum. The Bekebrede Miresse 41 is a true seagoing sailing yacht and is equipped for total seaworthiness and blue water cruising. The owner has paid a lot of attention to the maintenance and prepared it for blue water sailing.

Hans Visser

SPECIFICATIONS

Dimensions	14.00 x 3.75 x 1.90 (m)	Builder	Bloemsma makkum & Albert van Bommel
Built	1977	Cabins	2
Material	Steel	Berths	6
Engine(s)	1 x Perkins 4236 diesel	Hp/Kw	62.00 (hp), 45.63 (kw)
Asking price	€ 69.000 (VAT Paid)	Lying	contact Hindeloopen

CONTACT

Sales office	De Valk Hindeloopen	Telephone	+31 514 52 40 00
Address	Oosterstrand 1 8713 JS Hindeloopen The Netherlands	E-mail	hindeloopen@devalk.nl

DISCLAIMER

These particulars are given in good faith as supplied but cannot be guaranteed.



GENERAL

Model	BEKEBREDE MIRESSSE 41
Type	sailing yacht
LOA (m)	14,00
Beam (m)	3,75
Draft (m)	1,90
Air draft (m)	16,00
Headroom (m)	1,80
Year built	1977
Builder	Bloemsma makkum & Albert van Bommel
Country	The Netherlands
Designer	Martin bekebrede
Displacement (t)	18
CE norm	NA
Hull material	steel
Hull colour	black With cream
Hull thickness (mm)	6 and 4, bottom of keel is 35 MM
Hull shape	S-bilged
Keel type	long keel
Superstructure material	steel
Superstructure (mm)	3
Deck plate thickness (mm)	3
Rubbing strake	steel
Deck material	steel
Deck finish	non-skid paint
Superstructure deck finish	non-skid paint
Cockpit deck finish	non-skid paint
Antifouling (year)	New antifouling is available to apply prior to launch
Window frame	brass
Window material	Polycarbonate and Glass
Deckhatch	2



Portholes	brass
Insulation	foam PU
Fuel tank (litre)	stainless steel 200
Fuel tank 2 (litre)	stainless steel For stove
Level indicator (fuel tank)	yes
Freshwater tank (litre)	stainless steel 1200
Level indicator (freshwater)	yes
Blackwater tank (litre)	yes
Blackwater tank extraction	pump
Greywater tank (litre)	stainless steel 50
Wheel steering	mechanical
Outside helm position	yes
Emergency tiller	yes
More info on hull	Hull length 12,80

ACCOMMODATION

Cabins	2
Berths	6
Interior	teak
Layout	Standard
Floor	carpet
Open cockpit	yes
Saloon	yes
Headroom saloon (m)	1,80
Heating	central heating
Chart table	yes
Aft Cabin	yes
Convertible berth	In saloon
Opening door to cockpit	yes
Galley	yes
Countertop	wood Formica



BEKEBREDE MIRESSA 41

Sink	stainless steel Double
Cooker	calor gas 3 burner
Oven	yes
Microwave	yes
Fridge	yes
Freezer	Water cooled
Hot water system	geyser on Calor Gas
Water pressure system	electrical
Manual and/or foot pump	yes
Kettle	yes
Crockery	yes
Owners cabin	v-bed Sprung bed - lattoflex
Bed length (m)	1,90
Wardrobe	hanging and shelves
Bathroom	separate
Toilet	separate
Toilet system	vacuum Blakes lavac
Wash basin	in the bathroom
Guest cabin 1	v-bed Plus single
Bed length (m)	1,90
Wardrobe	hanging and shelves
Bathroom	separate
Toilet	separate
Toilet system	vacuum Blakes lavac
Wash basin	in the bathroom
Shower	separate
Washing machine	Manual
Extra info	Iron, vacuum cleaner, sewing machine, single iduction hob

MACHINERY

No of engines	1
---------------	---



BEKEBREDE MIRESSSE 41

Make	Perkins
Type	4236
HP	62
kW	45.63
Fuel	diesel
Year installed	1990
Year of overhaul	1997 by Perkins UK
Maximum speed (kn)	7
Cruising speed (kn)	6
Consumption (l/hr)	5
Engine cooling system	freshwater heat exchanger
Drive	shaft
Shaft seal	yes
Gearbox	mechanical
Propeller type	fixed
Propeller blades	3
Propeller shaft material	Bronze
Shaft lubrication	grease With pump
Manual bilge pump	yes
Electric bilge pump	yes
Batteries	yes
Start battery	12 V 100 Ah
Service battery	12 v 200 Ah
Windlass battery	12 V 50 Ah (not connected)
Battery monitor	yes
Battery charger	yes
Inverter	Sinergex 240 V 5 Kw
Wind generator	yes
Solar panel	2 x
Shorepower	with cable
Extra info	Workbench with Vice
Extra info	2 alternators



NAVIGATION

Compass	yes
Electric compass	yes
Depth sounder	yes
Log	yes
VHF	Icom
VHF handheld	yes
Autopilot	yes
Radar	Raytheon SL 70
GPS	yes
Navtex	yes
PC connection	yes
AIS transceiver	Nasa marine
Transmitter	Icom M-70
Navigation lights	yes

EQUIPMENT

Sprayhood with grab rail	yes
Cockpit cover	yes
Cockpit cushions	yes
Cockpit table	yes
Anchor	CQR Plough
Anchor chain	100 M
Anchor 2	Danforth Light weight and Fishermann Plow with 100 M rope
Windlass	electrical
Dinghy	inflatable
Outboard	Honda 2,2 HP aircooled 4 stroke
Sea railing	yes
Grab rail (superstructure)	yes
Pushpit	yes
Pulpit	yes



Life raft	container
Life raft (pers)	6
Last life raft survey	2020
Lifejackets	Need check
Safety lines on deck	Forward and aft
Horn	yes
Fenders	yes
Mooring lines	yes
Tools	yes
Radio-cd player	yes
Fire extinguisher	At nav station
Extinguisher in engine room	yes

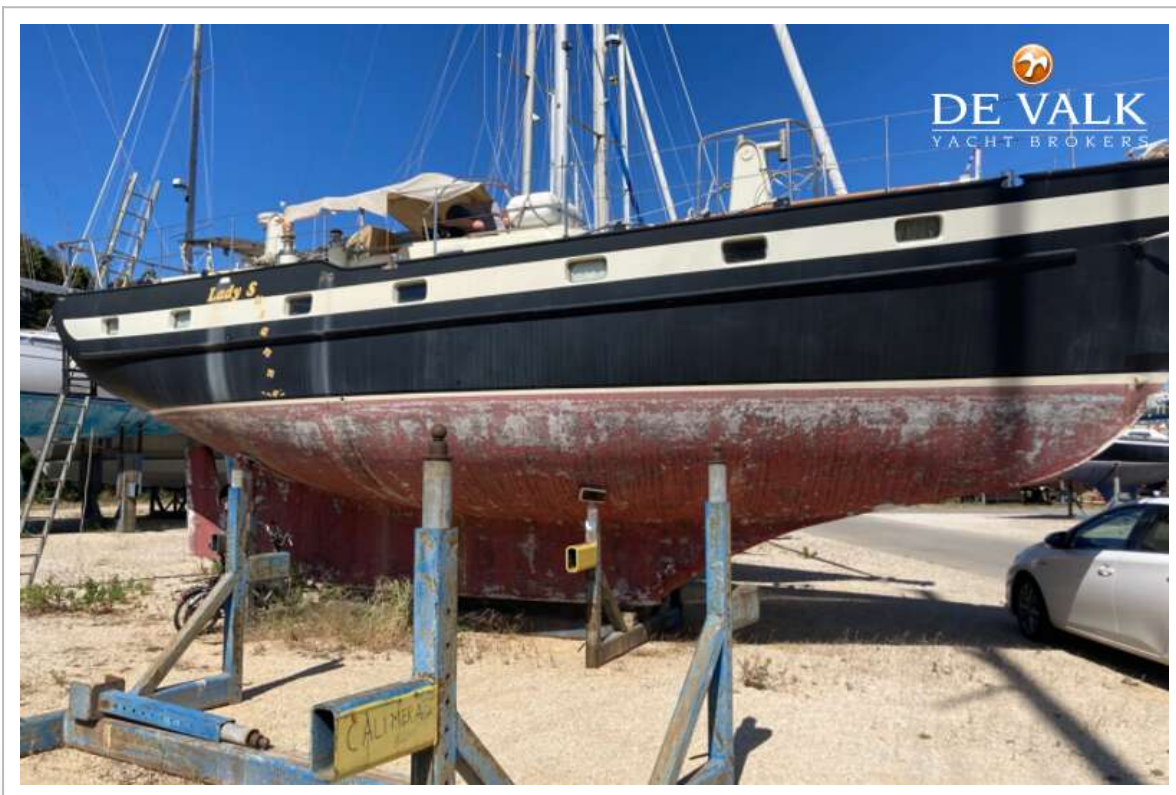
RIGGING

Rigging	ketch
Standing rigging	wire
Brand mast	Brasker
Material mast	wood
Spreaders	Single
Mainsail	2 x
Mainsail cover	yes
Mizzen	yes
Mizzen sailcover	yes
Genoa	yes
Genoa I	150%
Gennaker	2 x cruising chute
Staysail	2 x
Reefing System	slabreefing
Boomvang	mechanical and tackle
Primary sheet winch	yes
Secondary sheet winch	yes



Genoa sheetwinches	yes
Halyard winches	yes
Multifunctional winches	yes



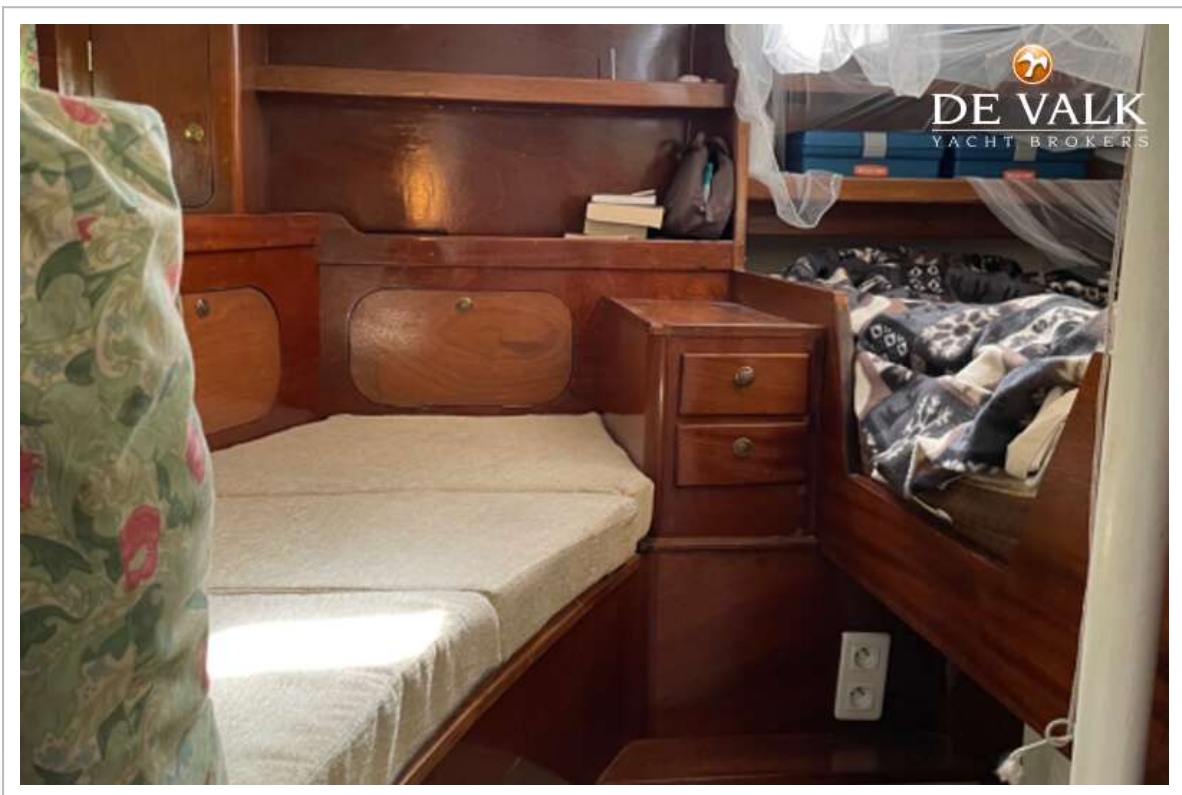


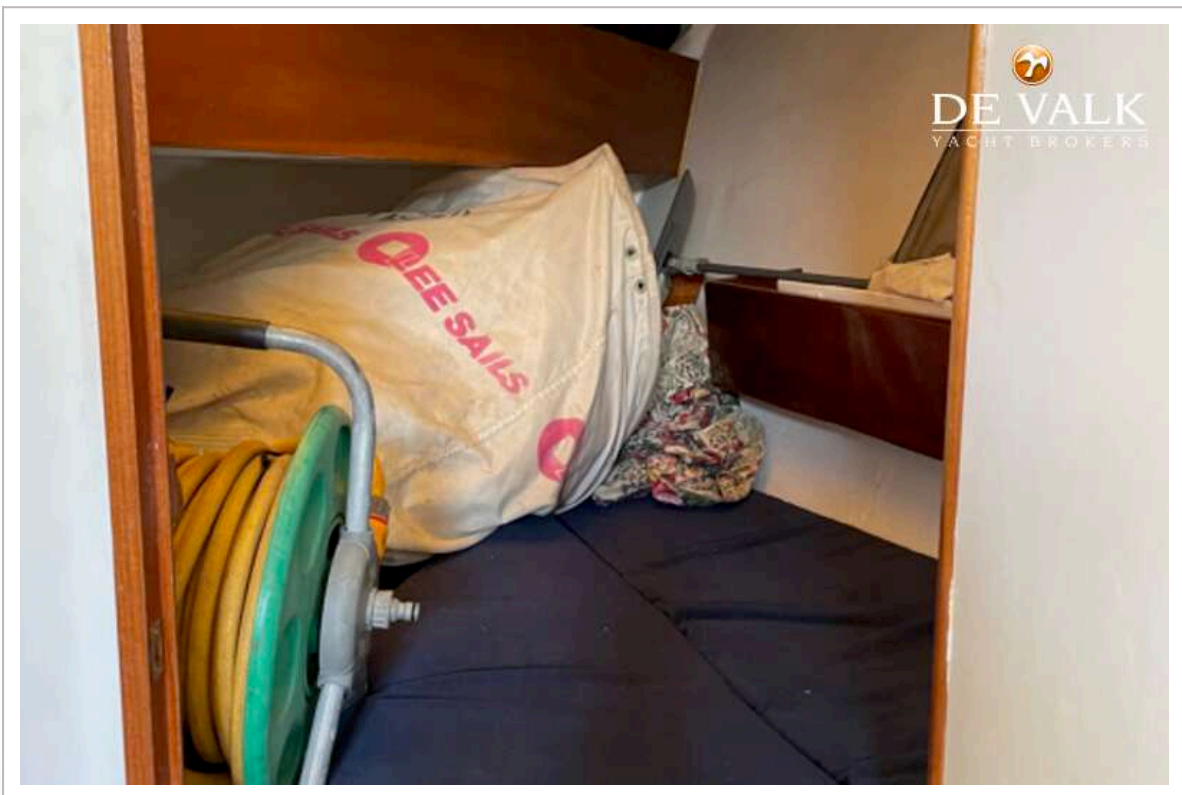




BEKEBREDE MIRESSE 41







BEKEBREDE MIRESSE 41

