



DE VALK
YACHT BROKERS



FAURBY 393



DE VALK
YACHT BROKERS

BROKERAGE | CHARTER | BERTHS | FINANCE | INSURANCE | YACHT MANAGEMENT

FAURBY 393

BROKER'S COMMENTS

The Faurby 393, a sweet-talk for the eyes of everyone who loves fine lines of sailing yachts. She is fast, sleek, low freeboarded with a nice, sharp bow. A wonderful example of a Baltic Sea boat. The joinery is made of massive teak wood. There is a central foldable dining table with a 3-seater settee on starboard side and a U-settee facing it on port. In the front a V-berth. The aft part of the boat features a small navigation station to starboard side with the heads. To port side is the galley and the door to the aft cabin. Buying this Faurby is acquiring a sailing diamond for sure!

Reinier van der Wolf

SPECIFICATIONS

| | | | |
|---------------------|-------------------------------|----------------|---------------------|
| Dimensions | 11.98 x 3.20 x 1.88 (m) | Builder | Faurby Yachts A/S |
| Built | 1987 | Cabins | 2 |
| Material | GRP | Berths | 6 |
| Engine(s) | 1 x Volvo Penta D1-30F diesel | Hp/Kw | 28 (hp), 20.61 (kw) |
| Asking price | € 69.000 (VAT Paid) | Lying | at sales office |

CONTACT

| | | | |
|---------------------|--|------------------|------------------------|
| Sales office | De Valk Monnickendam | Telephone | +31 299 65 63 50 |
| Address | Hoogedijk 6 1145 PM Katwoude The Netherlands | E-mail | monnickendam@devalk.nl |

DISCLAIMER

These particulars are given in good faith as supplied but cannot be guaranteed.



GENERAL

| | |
|-----------------------------|-----------------------|
| Model | FAURBY 393 |
| Type | sailing yacht |
| LOA (m) | 11,98 |
| LWL (m) | 10,15 |
| Beam (m) | 3,20 |
| Draft (m) | 1,88 |
| Air draft (m) | 15,80 |
| Headroom (m) | 1,85 |
| Year built | 1987 |
| Builder | Faurby Yachts A/S |
| Country | Denmark |
| Designer | Niels Peter Faurby |
| Displacement (t) | 5,8 |
| Ballast (tonnes) | 2,4 |
| Hull material | GRP |
| Hull colour | white |
| Hull shape | round-bilged |
| Keel type | fin keel |
| Superstructure material | GRP |
| Rubbing strake | aluminum |
| Deck material | GRP |
| Deck finish | teak |
| Superstructure deck finish | non-skid moulded in |
| Cockpit deck finish | teak |
| Window frame | aluminium |
| Window material | polycarbonate |
| Deckhatch | 2 |
| Fuel tank (litre) | aluminium - 40 |
| Level indicator (fuel tank) | yes |
| Freshwater tank (litre) | stainless steel - 120 |



| | |
|----------------------------|--|
| Blackwater tank (litre) | stainless steel |
| Blackwater tank extraction | deck extraction |
| Wheel steering | mechanical - Jefa Steering |
| Emergency tiller | yes |
| More info on hull | Underwater hull serviced and painted by Waterland Yacht Service in 2023 and new anode. |

ACCOMMODATION

| | |
|-------------------------------|---|
| Cabins | 2 |
| Berths | 6 |
| Interior | teak |
| Floor | teak and holly |
| Saloon | with L-shaped bench and longitudinal bench |
| Headroom saloon (m) | 1.85 |
| Heating | diesel ducted hot air - Webasto Air Top Evo |
| Chart table | yes |
| Aft Cabin | Port side |
| Dinette to convert into berth | yes |
| Galley | with new kitchen faucet. |
| Countertop | corian |
| Sink | stainless steel |
| Cooker | calor gas - ENO 2 burner pits Zweiflamm |
| Fridge | Dometic |
| Water pressure system | electrical - 2023 new water pipes with filter and new electrical water pump |
| Owners cabin | v-bed - front voor Forne |
| Bed length (m) | Custom fit real matrass 20 cm thick - 2,00 |
| Wardrobe | hanging and shelves |
| Bathroom | shared |
| Toilet | shared |
| Toilet system | manual - Jabsco |
| Wash basin | at the toilet |



| | |
|----------------|---|
| Guest cabin 1 | double bed |
| Bed length (m) | 2,00 |
| Wardrobe | hanging and shelves |
| Extra info | New Moskito nets for owners cabin and salon in 2023 |

MACHINERY

| | |
|-------------------------|-------------------------------|
| No of engines | 1 |
| Make | Volvo Penta |
| Type | D1-30F |
| HP | 28 |
| kW | 20.61 |
| Fuel | diesel |
| Year installed | 2009 |
| Engine hours | 1421 |
| Engine cooling system | freshwater heat exchanger |
| Drive | sail-drive |
| Engine controls | bowden cable - Seastar (2023) |
| Exhaust | watercooled |
| Propeller type | folding |
| Propeller blades | Double dubbel Doppel |
| Manual bilge pump | in cockpit - RM69 |
| Electrical installation | 12 220 v |
| Batteries | 2 x |
| Start battery | 1 x (2024) |
| Service battery | 1 x (2024) |
| Battery charger | Waeco Mobitronic |
| Shorepower | with cable |
| Extra info | Engine service 2023 |

NAVIGATION

| | |
|---------|---|
| Compass | Plastimo - (steering position) Silva - (at entrance saloon) |
|---------|---|



| | |
|-------------------|---|
| Depth sounder | Raymarine ST60 Depth |
| Log | Raymarine ST60 Speed |
| Windset | Raymarine ST60 Wind |
| VHF | Icom 423 (2023) |
| VHF handheld | in cockpit - Icom (2023) |
| Autopilot | Raymarine ST5000+ Autopilot |
| Plotter | mounted in Scanstrut Scanpot - B&G Zeus 3S (2020) |
| AIS transceiver | AIS700 Class B |
| Navigation lights | with deck mast light |

EQUIPMENT

| | |
|----------------------------|--|
| Sprayhood | yes |
| Cockpit table | yes |
| Boarding ladder | stainless steel |
| Deck shower | in cockpit |
| Anchor | Delta |
| Anchor chain | 50 m |
| Windlass | electrical - Lewmar * |
| Sea railing | wire |
| Grab rail (superstructure) | teak |
| Pushpit | stainless steel |
| Pulpit | stainless steel |
| Life raft | container - Plastimo Transocean (2023) |
| Life raft (pers) | 4 |
| Lifebuoy | 2023 |
| Safety lines on deck | New jack stays by Waterland Yacht Service 2023 |
| Fenders | yes |
| Mooring lines | yes |
| Radio-cd player | with bluetooth connection Sony |
| Cockpit speakers | 2 x |
| Speakers in salon | 2 x |



| | |
|-------------------|--|
| Clock - barometer | yes |
| Fire extinguisher | yes |
| Extra info | * Windlass operable from cockpit and by remote control on forward of deck. |

RIGGING

| | |
|-----------------------|---|
| Rigging | sloop |
| Standing rigging | Rod - 2023 (Waterland Yacht service) |
| Brand mast | John mast |
| Material mast | aluminium |
| Spreaders | Double dubbel doppel |
| Keel stepped mast | yes |
| Mainsail | 36 m2 (2018) |
| Mainsail cover | yes |
| Genoa | at the sailmaker 2023 and has been serviced Dynema Genoa Hallyard 2023 Dynema Genoa Sheet 2022 - 34 m2 (2019) |
| Genoa furler | Harken |
| Spinnaker | unused, 2020 - Elvstroem 90m2 |
| Reefing System | quick-one-line-reefing |
| Backstay adjuster | mechanical |
| Boomvang | mechanical and tackle |
| Secondary sheet winch | 2x Andersen Two Speed 46 |
| Genoa sheetwinches | 2x Andersen Two Speed 46 ST |
| Halyard winches | 1x Andersen 28 ST 1x Andersen 28 Two Speed (2023) |
| Spi-pole | yes |



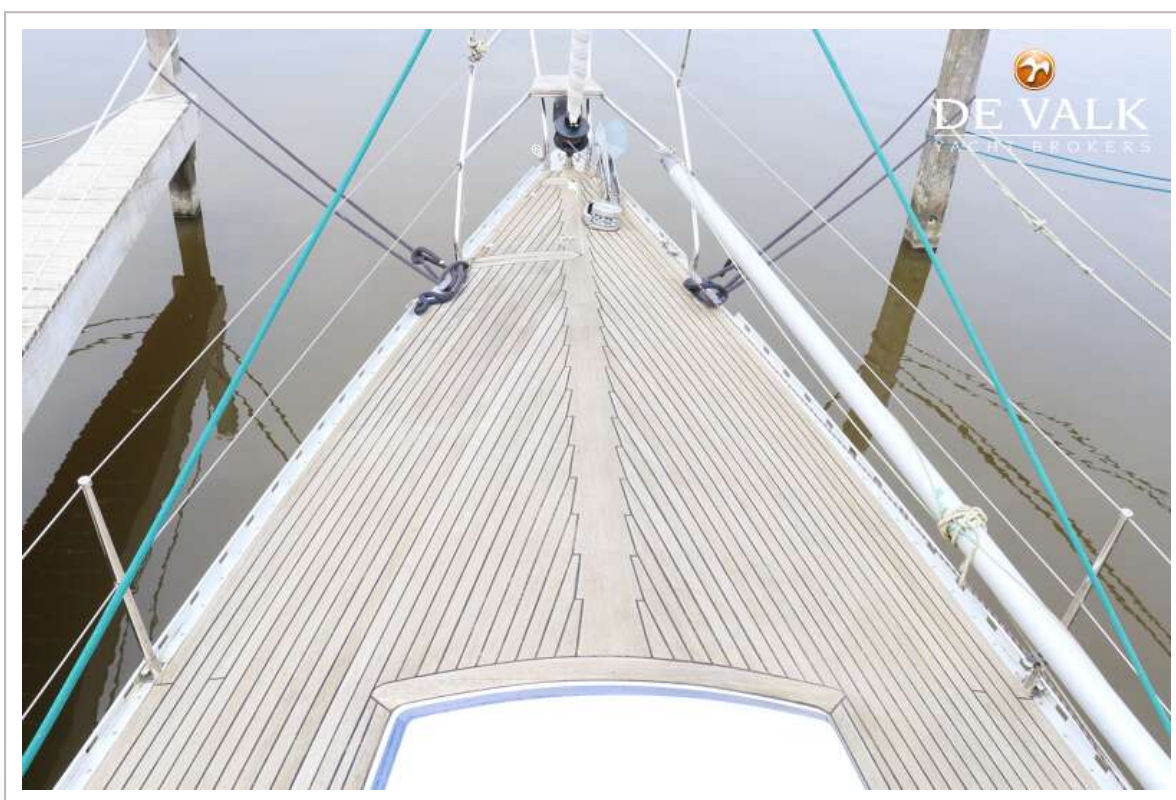
FAURBY 393



FAURBY 393



FAURBY 393



FAURBY 393





FAURBY 393

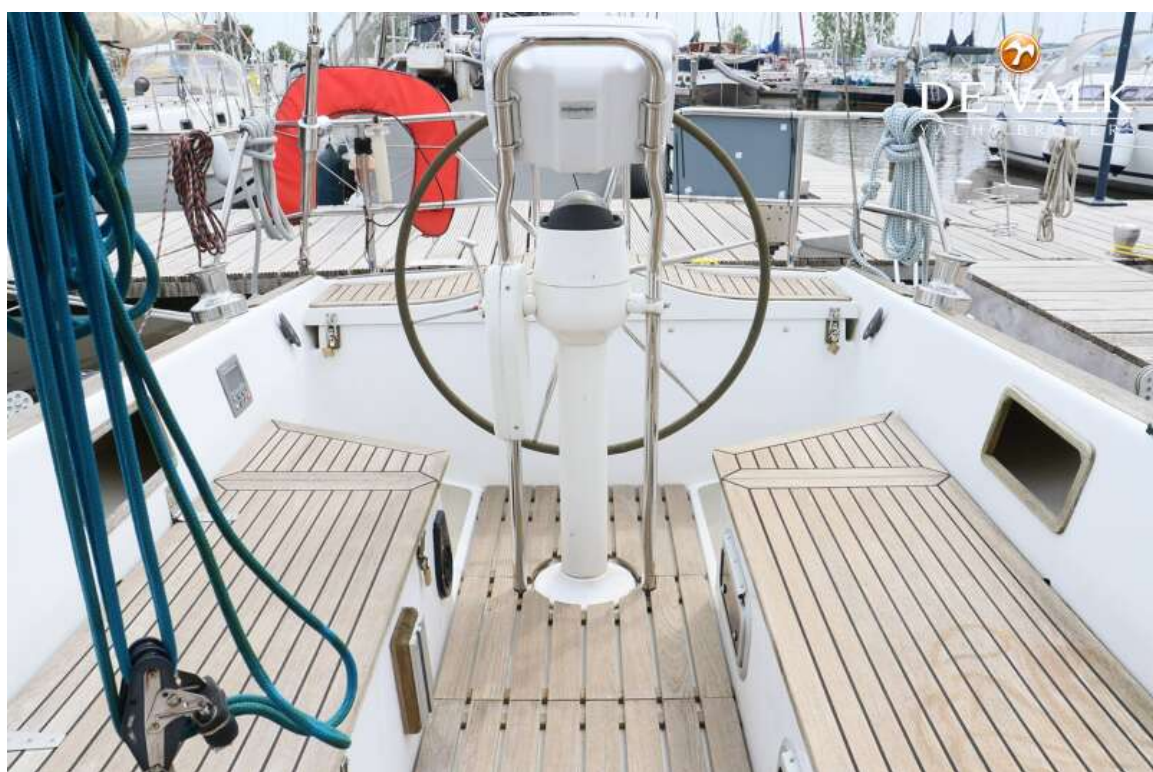


FAURBY 393





FAURBY 393



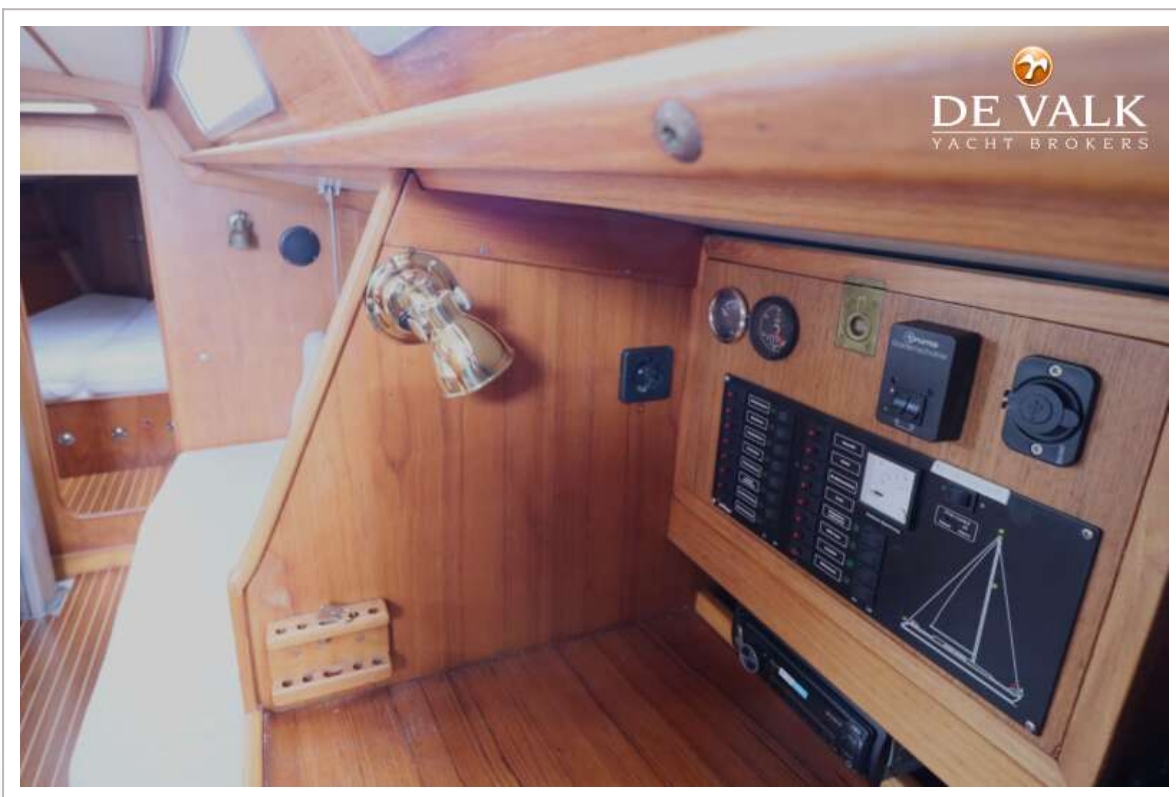
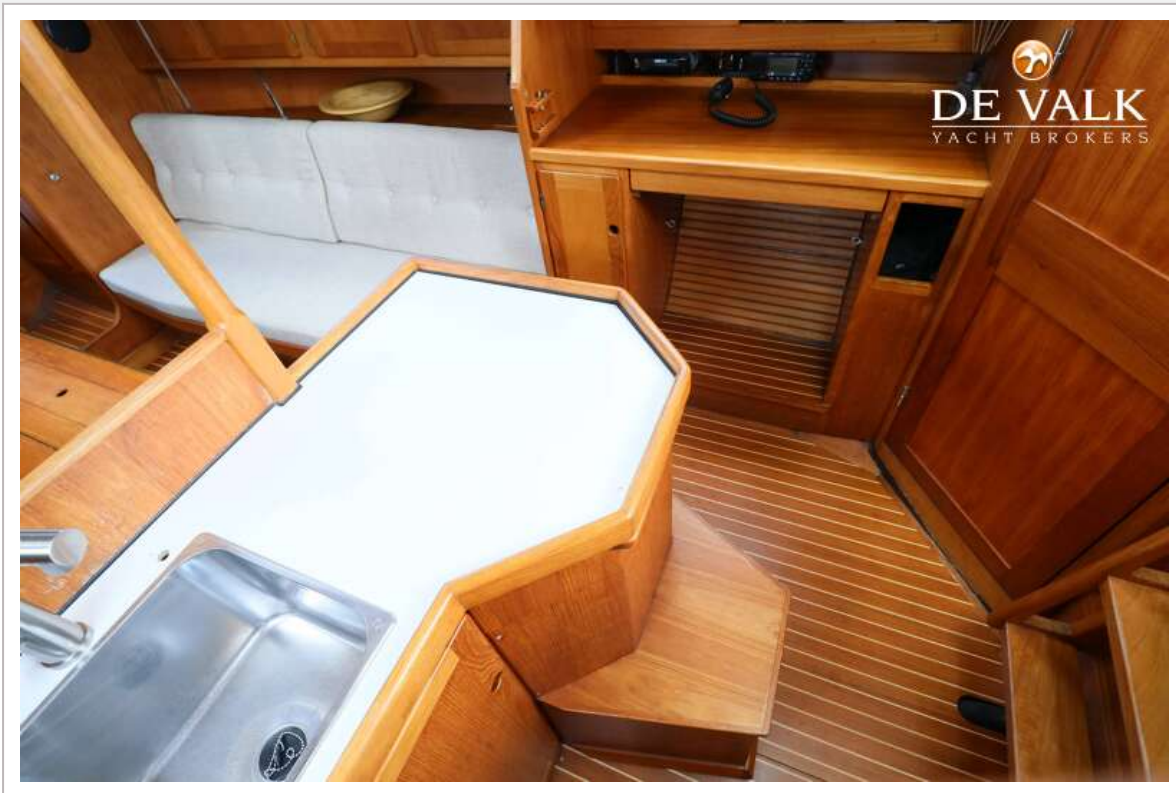
FAURBY 393



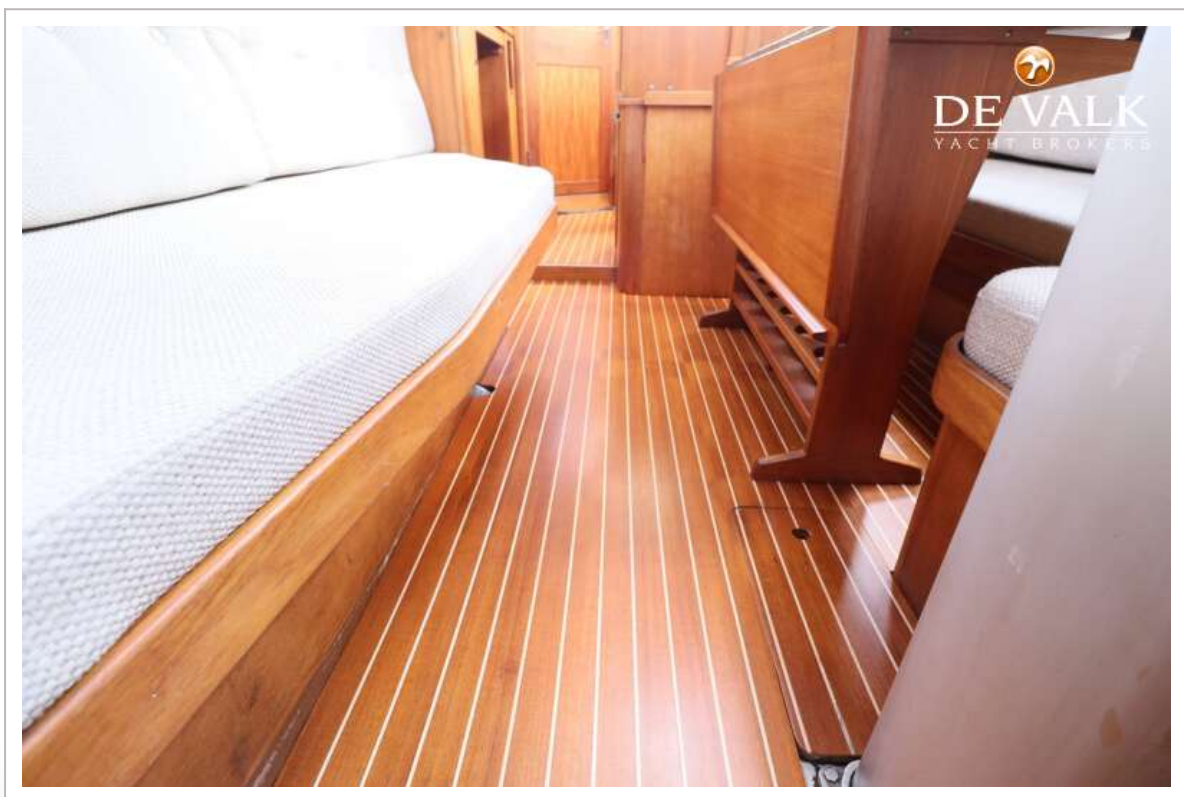
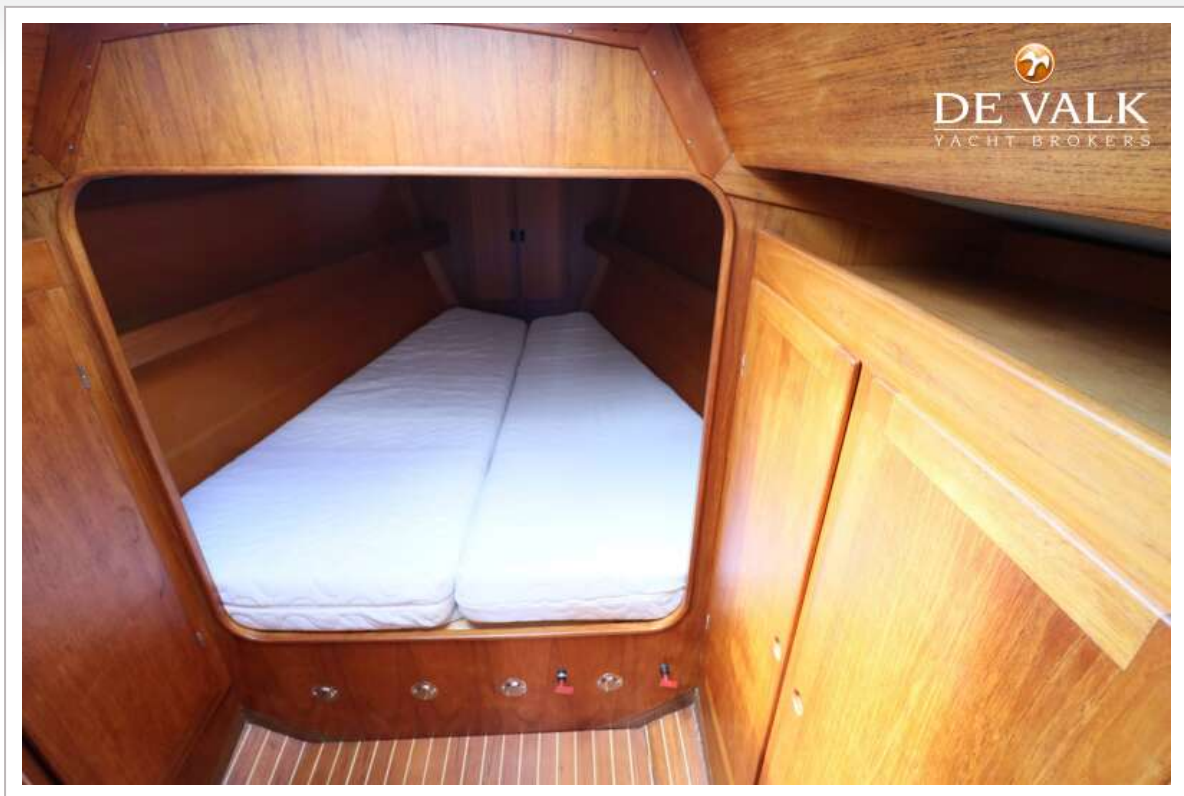
FAURBY 393



FAURBY 393



FAURBY 393



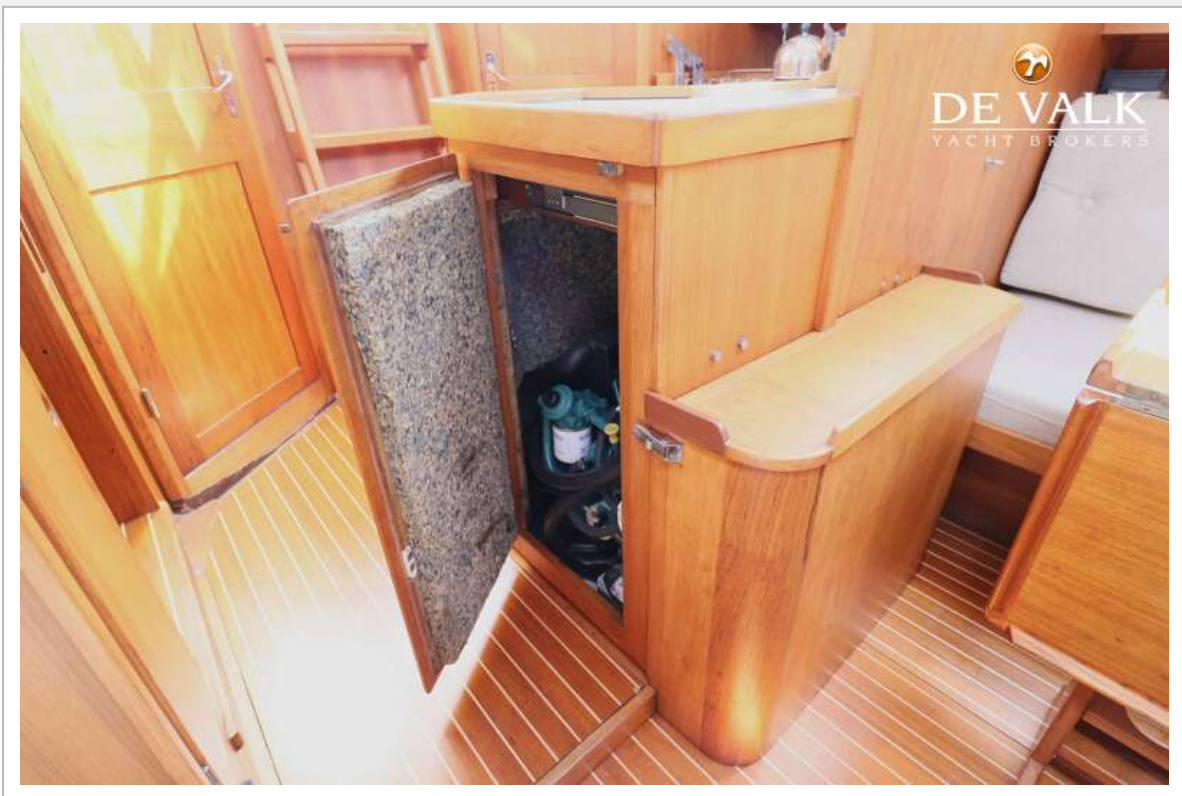
FAURBY 393



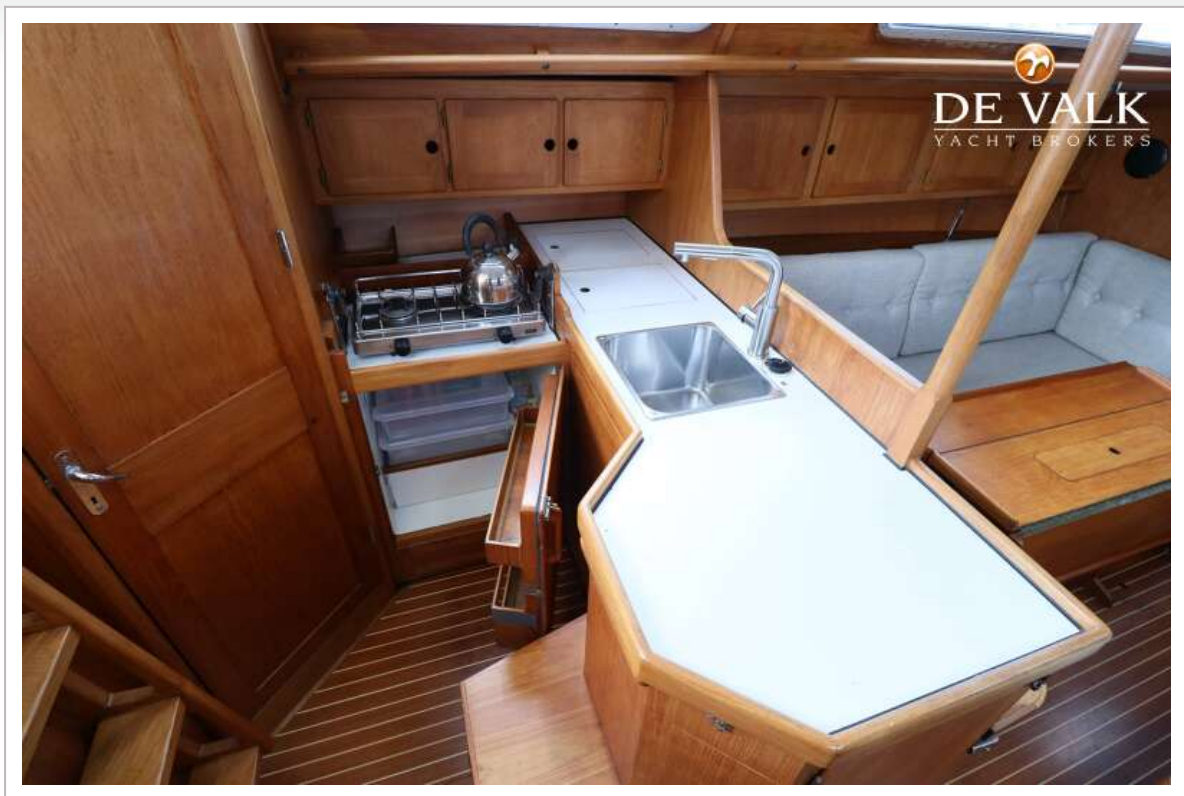
FAURBY 393

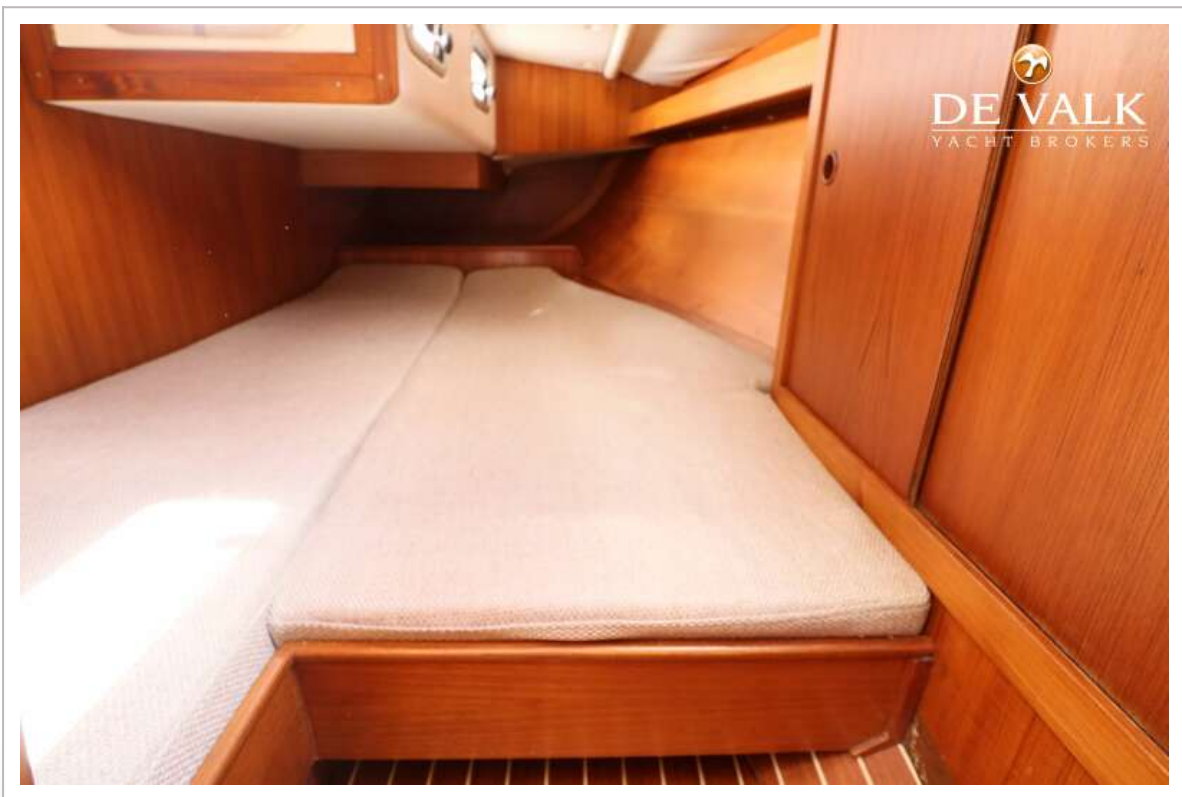


FAURBY 393



FAURBY 393





FAURBY 393

