



DE VALK  
YACHT BROKERS



FRAUSCHER 757 ST. TROPEZ



DE VALK  
YACHT BROKERS

# FRAUSCHER 757 ST. TROPEZ

## BROKER'S COMMENTS

The Frauscher 757 St. Tropez is a stylish and luxurious speedboat renowned for its elegant design and exceptional performance on the water. With a length of 7.57 meters, this boat offers ample space for comfortable cruising, while the powerful V8 Volvo Penta engine ensures both speed and agility. The Frauscher 757 St. Tropez combines modern technology with classic aesthetics, making it an ideal choice for water sports enthusiasts seeking both adventure and comfort. Visit our covered marina to view this Frauscher in person.

*Julian de Heer*

## SPECIFICATIONS

<b>Dimensions</b>	7.57 x 2.29 x 0.70 (m)	<b>Builder</b>	Frauscher
<b>Built</b>	2008	<b>Cabins</b>	
<b>Material</b>	GRP	<b>Berths</b>	
<b>Engine(s)</b>	1 x Volvo Penta 5.7 GXI petrol	<b>Hp/Kw</b>	0.00 (hp), 0.00 (kw)
<b>Asking price</b>	€ 89.500 (VAT Paid)	<b>Lying</b>	elsewhere / Not at sales office

## CONTACT

<b>Sales office</b>	De Valk Loosdrecht	<b>Telephone</b>	+31 35 582 90 30
<b>Address</b>	't Breukeleveense Meentje 6 1231 LM Loosdrecht / Wijdmeren The Netherlands	<b>E-mail</b>	loosdrecht@devalk.nl

## DISCLAIMER

These particulars are given in good faith as supplied but cannot be guaranteed.



# FRAUSCHER 757 ST. TROPEZ

## GENERAL

<b>Model</b>	FRAUSCHER 757 ST. TROPEZ
<b>Type</b>	motor yacht
<b>LOA (m)</b>	7,57
<b>Beam (m)</b>	2,29
<b>Draft (m)</b>	0,70
<b>Year built</b>	2008
<b>Builder</b>	Frauscher
<b>Country</b>	Italy
<b>Hull material</b>	GRP
<b>Hull colour</b>	blue
<b>Hull shape</b>	Fast Displacement Hull
<b>Deck material</b>	GRP
<b>Cockpit deck finish</b>	teak
<b>Window material</b>	polycarbonate
<b>Level indicator (fuel tank)</b>	Volvo Penta
<b>Fuel daytank (litre)</b>	polyethylene 175
<b>Wheel steering</b>	hydraulic
<b>Outside helm position</b>	yes

## ACCOMMODATION

<b>Fridge</b>	Myfridge
---------------	----------

## MACHINERY

<b>No of engines</b>	1
<b>Make</b>	Volvo Penta
<b>Type</b>	5.7 GXI
<b>Fuel</b>	petrol
<b>Engine cooling system</b>	freshwater heat exchanger
<b>Drive</b>	shaft



<b>Engine controls</b>	bowden cable
<b>Gearbox</b>	hydraulic
<b>Bowthruster</b>	electric Side-power
<b>Propeller type</b>	fixed
<b>Propeller blades</b>	4
<b>Propeller shaft material</b>	stainless steel
<b>Start battery</b>	yes

## EQUIPMENT

<b>Fixed windscreen</b>	yes
<b>Bimini</b>	yes
<b>Boarding ladder</b>	stainless steel
<b>Horn</b>	electric
<b>Fenders</b>	yes
<b>Mooring lines</b>	yes
<b>Radio</b>	Clarion
<b>Cockpit speakers</b>	yes



# FRAUSCHER 757 ST. TROPEZ

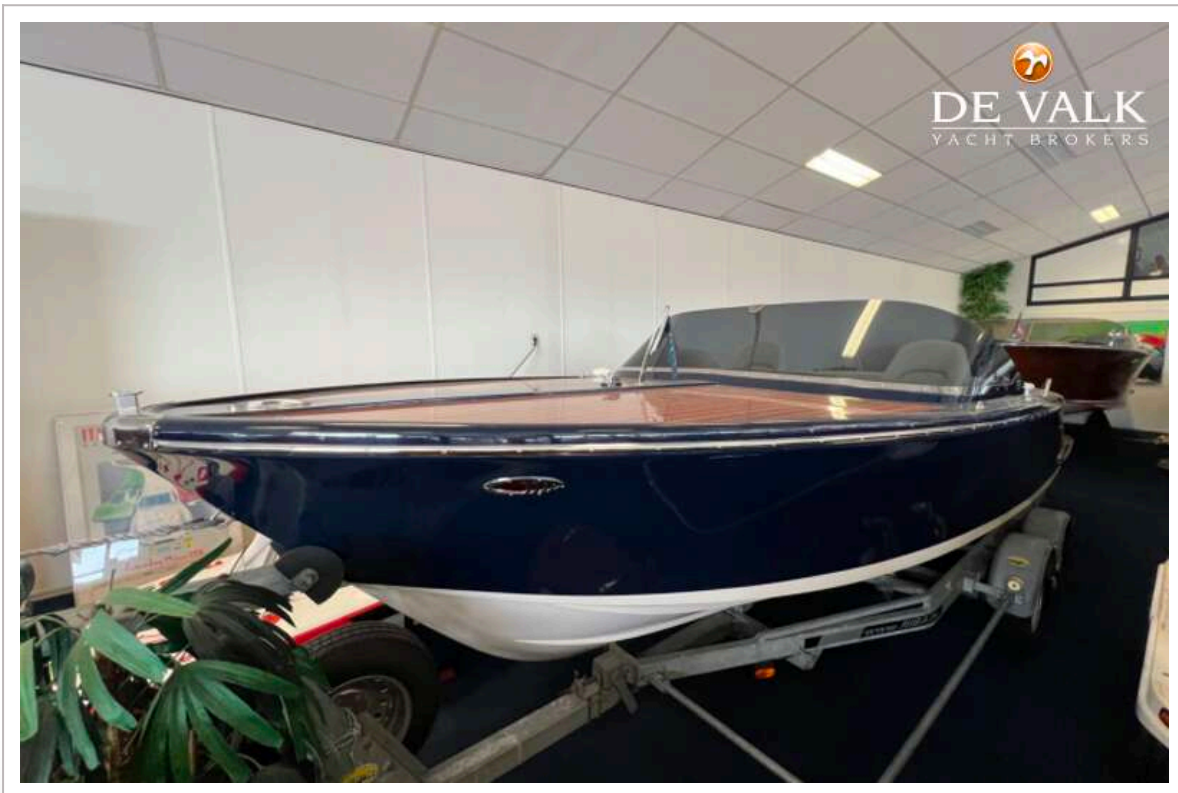




# FRAUSCHER 757 ST. TROPEZ

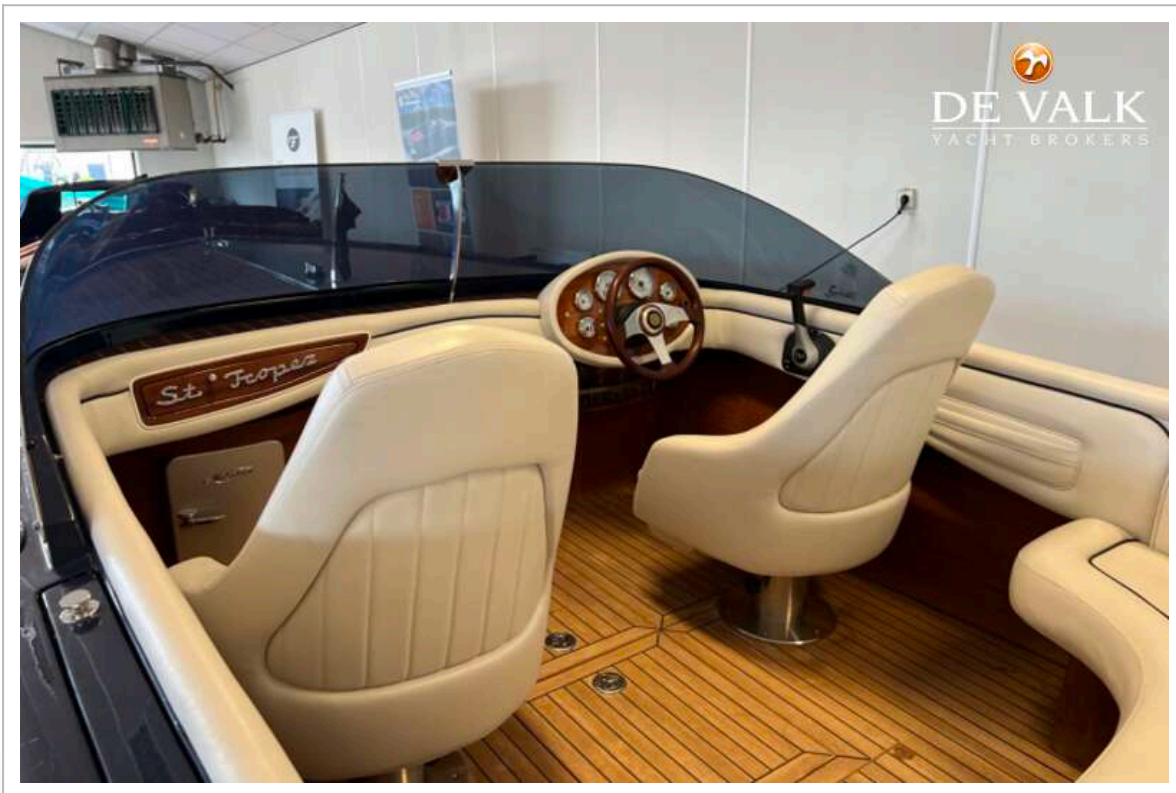
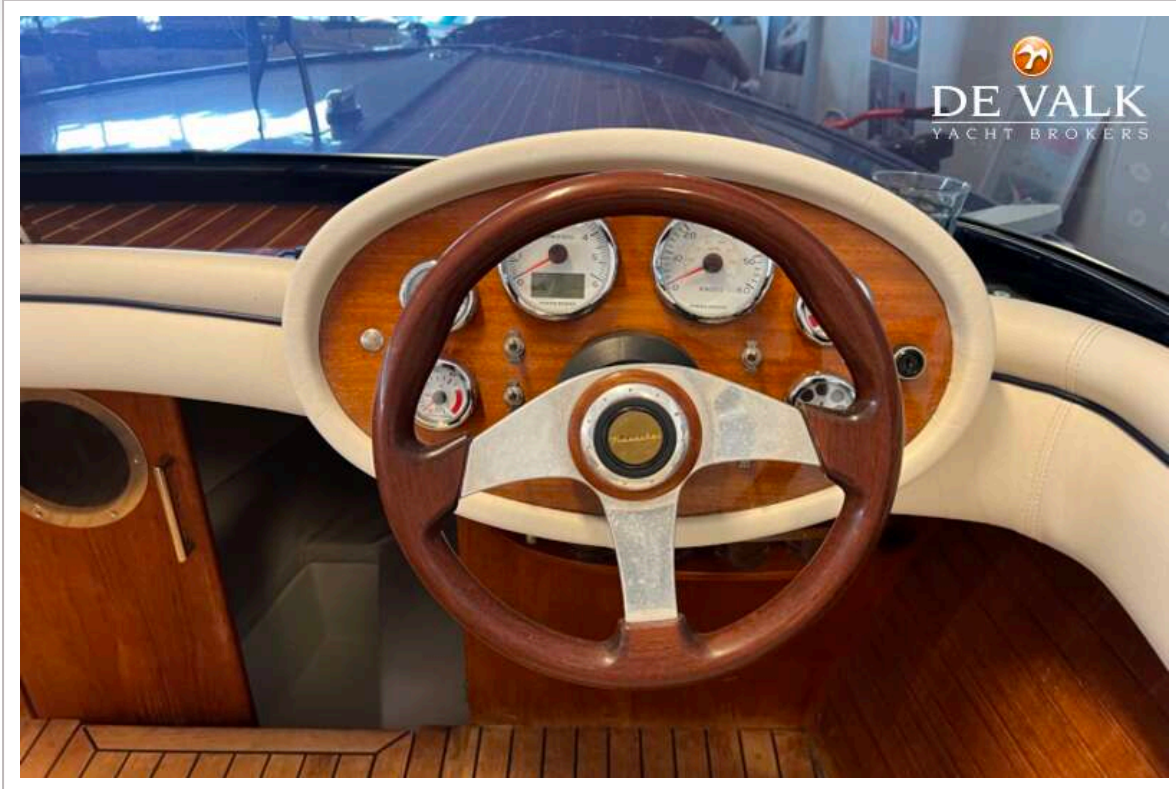


# FRAUSCHER 757 ST. TROPEZ





# FRAUSCHER 757 ST. TROPEZ





# FRAUSCHER 757 ST. TROPEZ



# FRAUSCHER 757 ST. TROPEZ





# FRAUSCHER 757 ST. TROPEZ

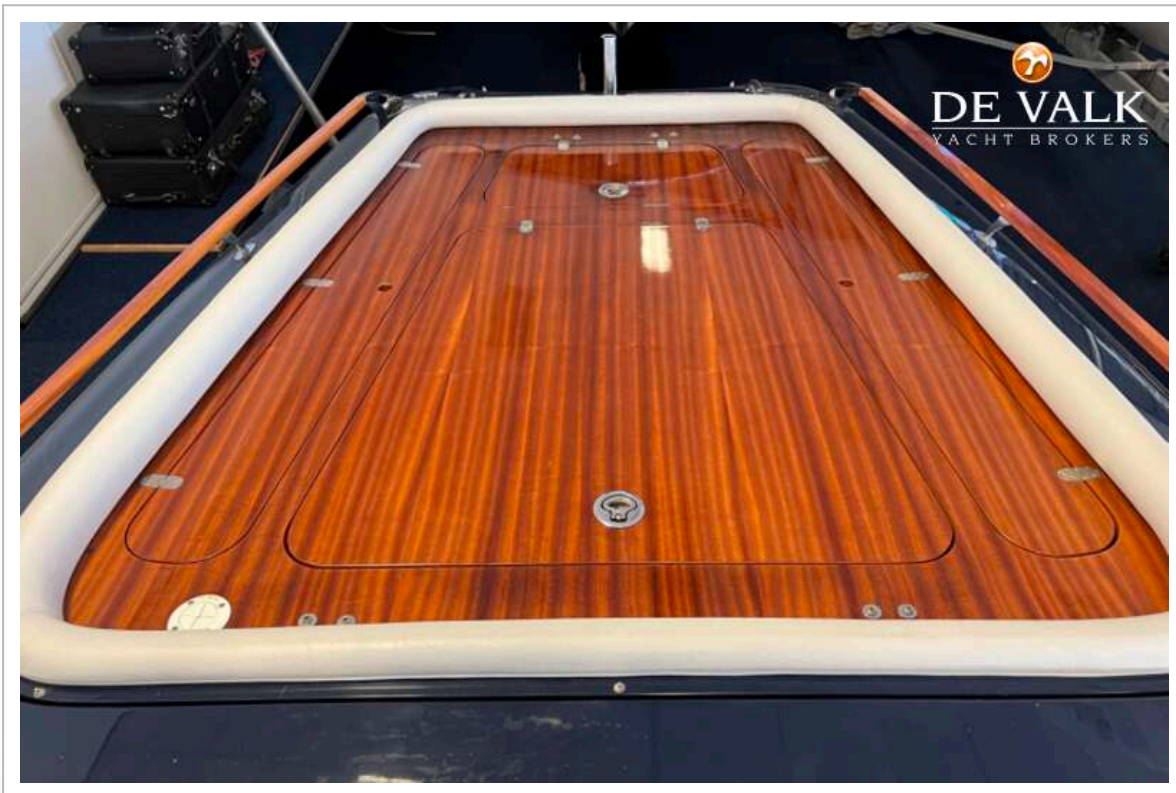




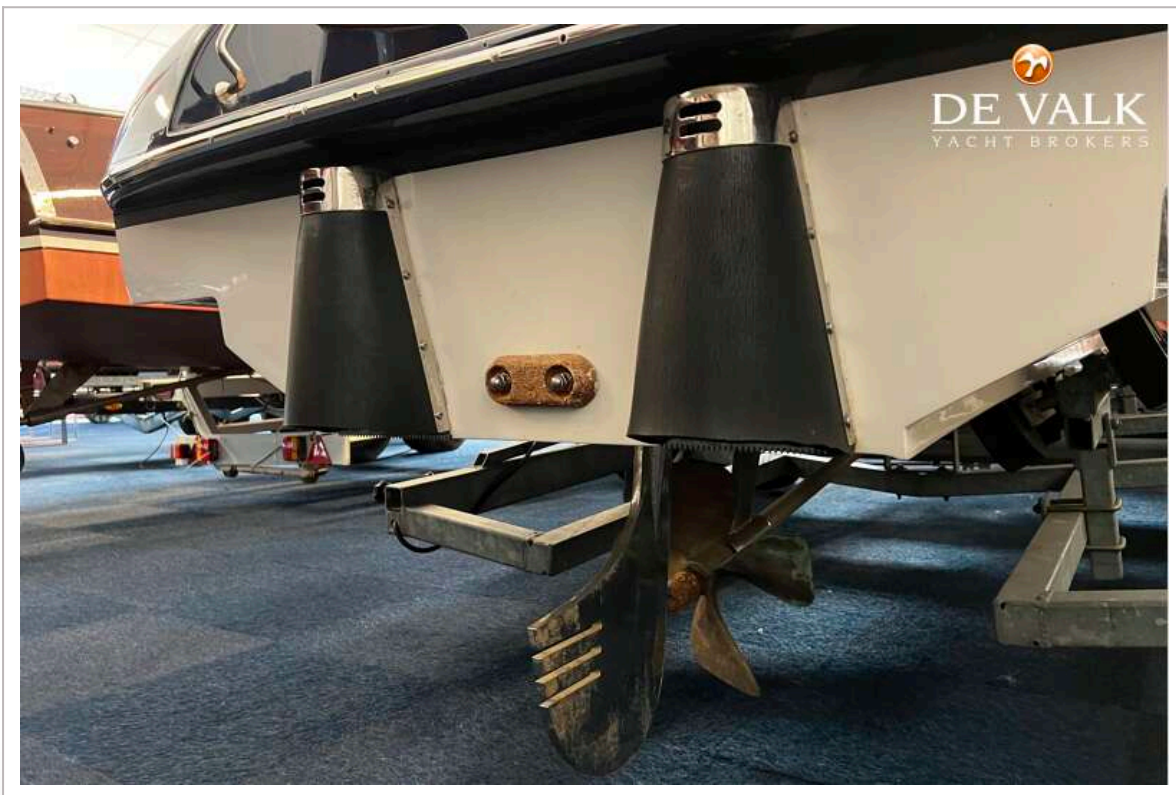
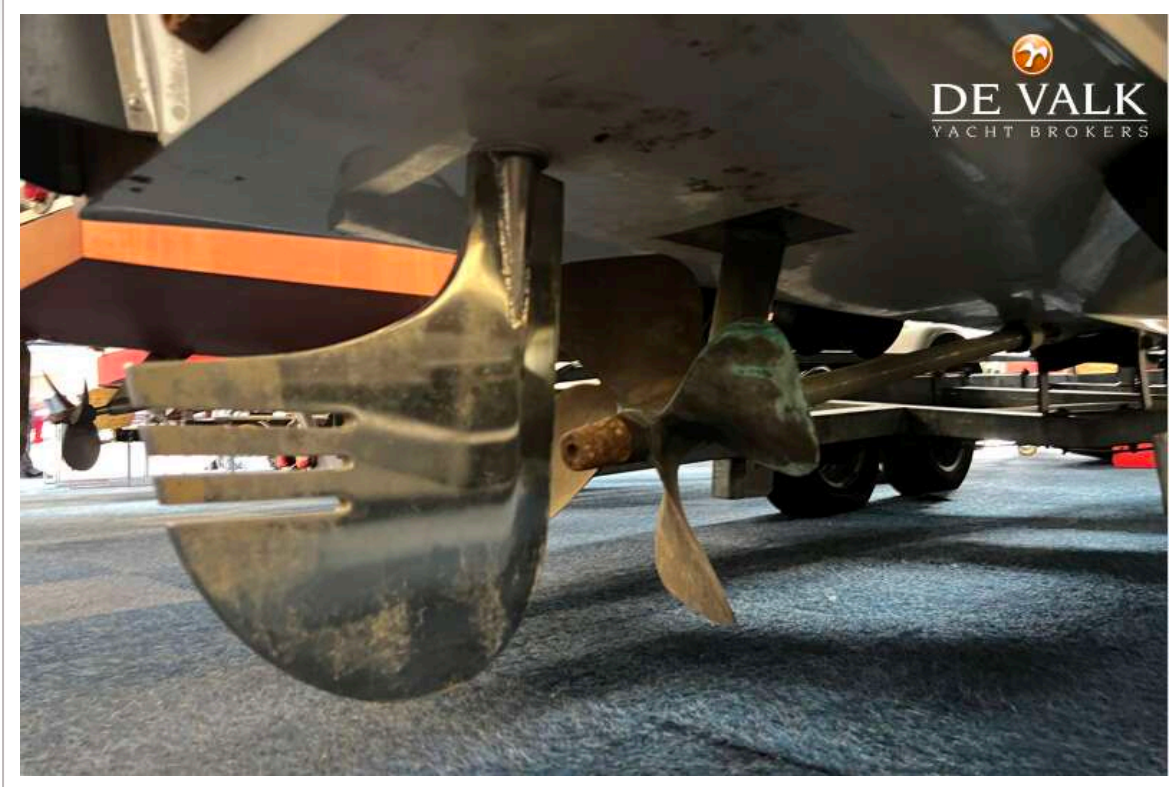
# FRAUSCHER 757 ST. TROPEZ



# FRAUSCHER 757 ST. TROPEZ









# FRAUSCHER 757 ST. TROPEZ



