



DE VALK  
YACHT BROKERS



VAN DEN HOVEN EXECUTIVE 1700



DE VALK  
YACHT BROKERS

# VAN DEN HOVEN EXECUTIVE 1700

## BROKER'S COMMENTS

This luxurious Van den Hoven Executive 1700 is extremely suitable for comfortable longer stays on board or even permanent habitation. She has a very spacious 2 cabin layout, 2 bathrooms and a big saloon. This Van den Hoven is built to the highest standards and is equipped with stabilizers, Kabola central heating with floor heating, proportionel bow and stern thrusters, Airconditioning in the owners cabin, and much more! She is maintained very well and now ready for a new adventure! This Van Den Hoven is located 30 minutes from Rotterdam and can be viewed on appointment.

*Joris van de Rijt*

## SPECIFICATIONS

<b>Dimensions</b>	17.32 x 4.87 x 1.55 (m)	<b>Builder</b>	B. van den Hoven Jachtbouw B.V.
<b>Built</b>	2013	<b>Cabins</b>	2
<b>Material</b>	Steel	<b>Berths</b>	4
<b>Engine(s)</b>	2 x Vetus Deutz DTA 66 EMR diesel	<b>Hp/Kw</b>	2 x 210.00 (hp), 154.56 (kw)
<b>Asking price</b>	€ 660.000 (VAT Paid)	<b>Lying</b>	elsewhere / Not at sales office

## CONTACT

<b>Sales office</b>	De Valk Sint Annaland	<b>Telephone</b>	+31 166 601 000
<b>Address</b>	Koelhuisweg 4 4697 RM Sint Annaland The Netherlands	<b>E-mail</b>	sintannaland@devalk.nl

## DISCLAIMER

These particulars are given in good faith as supplied but cannot be guaranteed.



## GENERAL

<b>Model</b>	VAN DEN HOVEN EXECUTIVE 1700
<b>Type</b>	motor yacht
<b>LOA (m)</b>	17,32
<b>LWL (m)</b>	14,98
<b>Beam (m)</b>	4,87
<b>Draft (m)</b>	1,55
<b>Air draft min (m)</b>	3,45
<b>Headroom (m)</b>	1,90
<b>Year built</b>	2013
<b>Builder</b>	B. van den Hoven Jachtbouw B.V.
<b>Country</b>	The Netherlands
<b>Displacement (t)</b>	40
<b>CE norm</b>	A
<b>Hull material</b>	steel
<b>Hull shape</b>	hard chine
<b>Superstructure material</b>	steel
<b>Rubbing strake</b>	stainless steel
<b>Deck material</b>	steel
<b>Deck finish</b>	teak
<b>Superstructure deck finish</b>	non-skid moulded in
<b>Cockpit deck finish</b>	teak
<b>Window frame</b>	aluminium
<b>Window material</b>	double glazing Tinted glass
<b>Deckhatch</b>	yes
<b>Portholes</b>	8 x
<b>Insulation</b>	foam
<b>Radar arch</b>	collapsible
<b>Mast can be lowered</b>	hydraulic
<b>Fuel tank (litre)</b>	steel 2200
<b>Level indicator (fuel tank)</b>	yes



<b>Freshwater tank (litre)</b>	polyethylene 1500
<b>Level indicator (freshwater)</b>	yes
<b>Blackwater tank (litre)</b>	polyethylene 500
<b>Level indicator (blackwater)</b>	Full indicator
<b>Blackwater tank extraction</b>	deck extraction + pump
<b>Wheel steering</b>	hydraulic
<b>Inside helm position</b>	yes

## ACCOMMODATION

<b>Cabins</b>	2
<b>Berths</b>	4
<b>Interior</b>	yes
<b>Floor</b>	wood + carpet in both cabins
<b>Aft deck</b>	With lounge and teak table (both with a cover)
<b>Saloon</b>	yes
<b>Headroom saloon (m)</b>	1,90
<b>Sliding roof</b>	electric In saloon
<b>Heating</b>	central heating Kabola HR-500 with floor heating throughout the ship
<b>Air-conditioning</b>	single cycle airco In owners cabin
<b>Aft Cabin</b>	yes
<b>Dinette</b>	yes
<b>Opening door to aft deck</b>	Can be opened completely (2 x 2 swing-away door panels)
<b>Galley</b>	yes
<b>Countertop</b>	corian
<b>Sink</b>	stainless steel
<b>Cooker</b>	ceramic Etna 4 burner
<b>Extractor</b>	Retractable in countertop
<b>Microwave/oven combi</b>	Pelgrim
<b>Fridge</b>	Bosch with freezer in galley + fridge drawer in saloon
<b>Freezer</b>	Zanussi



# VAN DEN HOVEN EXECUTIVE 1700

Wine cooler	Cavist in saloon
Hot water system	on central heating
Water pressure system	electrical
Dishwasher	Bosch
Owners cabin	French bed Aftercabin with headroom 1,90 m
Bed length (m)	2,00 x 1,70
Wardrobe	hanging/drawers/shelves
Bathroom	en suite With headroom 1,90 m
Toilet	en suite
Toilet system	electric
Wash basin	in the bathroom
Shower	en suite Separate shower compartment
Guest cabin 1	double bed Front cabin with headroom 1,90 m
Bed length (m)	2,00 x 1,45
Wardrobe	hanging/drawers/shelves
Bathroom	en suite With headroom 1,90
Toilet	separate In front hallway
Toilet system	electric
Wash basin	in the bathroom
Shower	en suite Separate shower compartment
Washing machine/dryer combi	Bosch Wash + Dry
Extra info	Electric pleated blinds in saloon

## MACHINERY

No of engines	2
Make	Vetus Deutz
Type	DTA 66 EMR
HP	210
kW	154.56
Fuel	diesel
Year installed	2013



<b>Cruising speed (kn)</b>	6
<b>Engine hours</b>	1604
<b>Engine cooling system</b>	freshwater heat exchanger
<b>Drive</b>	shaft
<b>Engine controls</b>	electrical EMC
<b>Gearbox</b>	hydraulic
<b>Bowthruster</b>	hydraulic Proportional
<b>Sternthruster</b>	hydraulic Proportional
<b>Thrust bearing</b>	Aquadrive
<b>Propeller type</b>	fixed
<b>Propeller blades</b>	2 x 4
<b>Propeller shaft material</b>	stainless steel
<b>Electric bilge pump</b>	3 x
<b>Bilge alarm</b>	yes
<b>Electrical installation</b>	24V / 230V
<b>Generator</b>	Mastervolt Whisper 12 Ultra
<b>Running hours generator</b>	195
<b>Start battery</b>	4 x
<b>Service battery</b>	6 x
<b>Generator battery</b>	1 x
<b>Battery monitor</b>	Mastervolt on navigation dashboard
<b>Battery charger</b>	Mastervolt Chargemaster Plus 24/80
<b>Inverter</b>	Mastervolt Mass Sine 24/5000
<b>Shorepower</b>	with cable + Mastervolt automatic transfer switch for generator/shorepower
<b>Insulation transformer</b>	Mastervolt Mass GI 3.5
<b>Stabilizers</b>	fin Vetus Hydraulic
<b>Extra info</b>	Hydronautica remote for engines and bow/stern thrusters
<b>Extra info</b>	Dubble switchable fuel filters. Last engine service 2024
<b>Extra info</b>	Mastervolt shore power connection on both bow and stern

## NAVIGATION



Depth sounder	Raymarine
VHF	Raymarine
Autopilot	Raymarine with a remote control
Rudder angle indicator	Via autopilot
Radar	Raymarine
Radar/GPS/plotter	2 x Raymarine
Electronic chart(s)	yes
AIS transponder	Em-trak A100
Navigation lights	LED
Searchlight	yes

## EQUIPMENT

Bimini	Black
Cockpit cushions	Brown cushions on sofa on aft with a cover
Cockpit table	Teak
Bathing platform	With 2 x stainless steel railing
Boarding ladder	stainless steel
Transom door	2 x
Deck shower	On bathing platform
Anchor	Pool Stainless steel
Anchor chain	yes
Windlass	hydraulic Vetus
Capstan	On Windlass
Deck wash	On aft deck
Sea railing	stainless steel
Railing side opening gates	2 x
Wiper	Exalto 3 x double
Horn	electric
Fenders	yes
Mooring lines	yes
TV	1 x in saloon + 1 x retractable in owners cabin



<b>Radio</b>	Fusion MS-RA70N
<b>Speakers in salon</b>	yes
<b>Fire extinguisher</b>	yes
<b>Auto extinguisher system</b>	In engine room
<b>Extra info</b>	Stainless steel ladder to use on port or starboard side







# VAN DEN HOVEN EXECUTIVE 1700



# VAN DEN HOVEN EXECUTIVE 1700



# VAN DEN HOVEN EXECUTIVE 1700



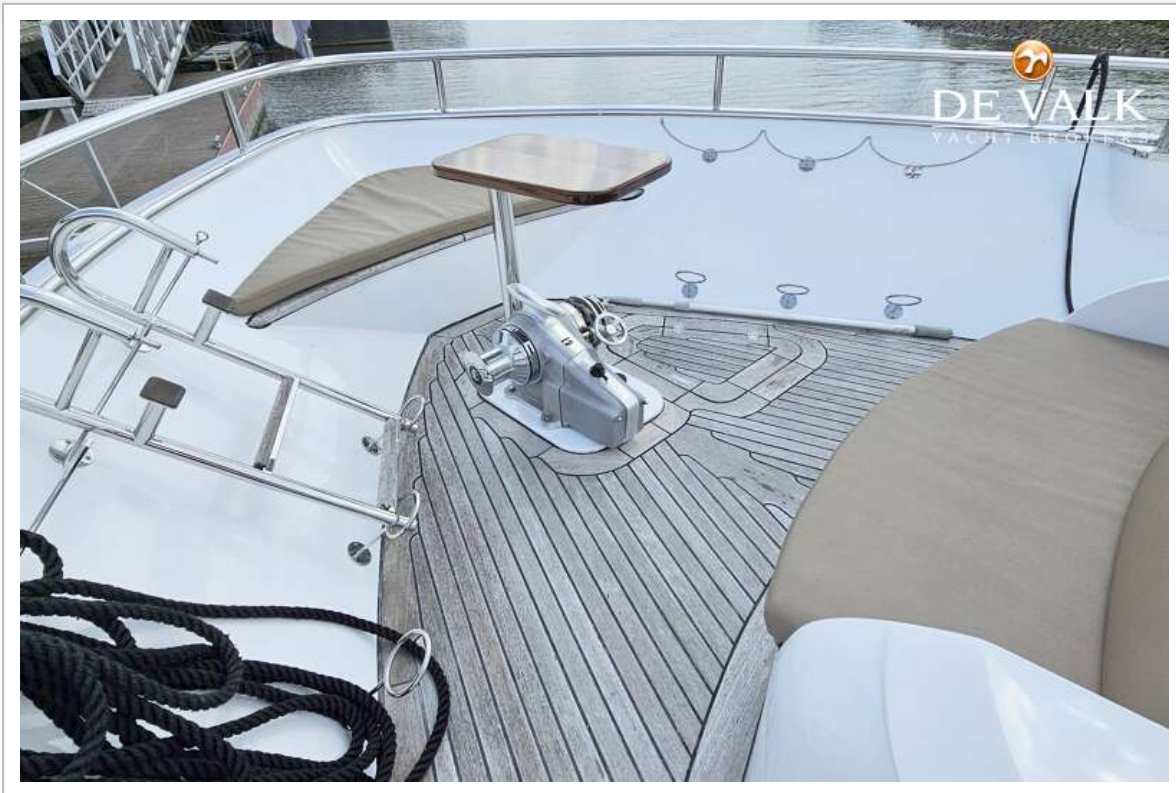
# VAN DEN HOVEN EXECUTIVE 1700



# VAN DEN HOVEN EXECUTIVE 1700



# VAN DEN HOVEN EXECUTIVE 1700

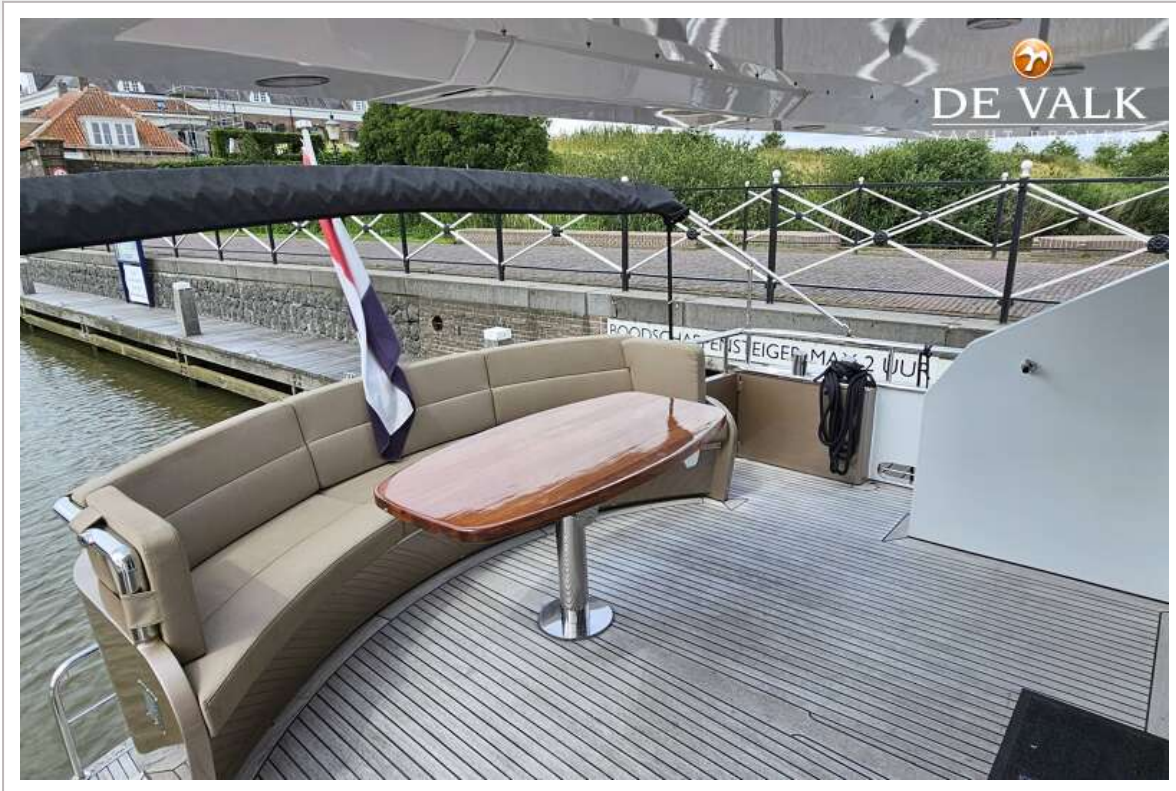


# VAN DEN HOVEN EXECUTIVE 1700





# VAN DEN HOVEN EXECUTIVE 1700



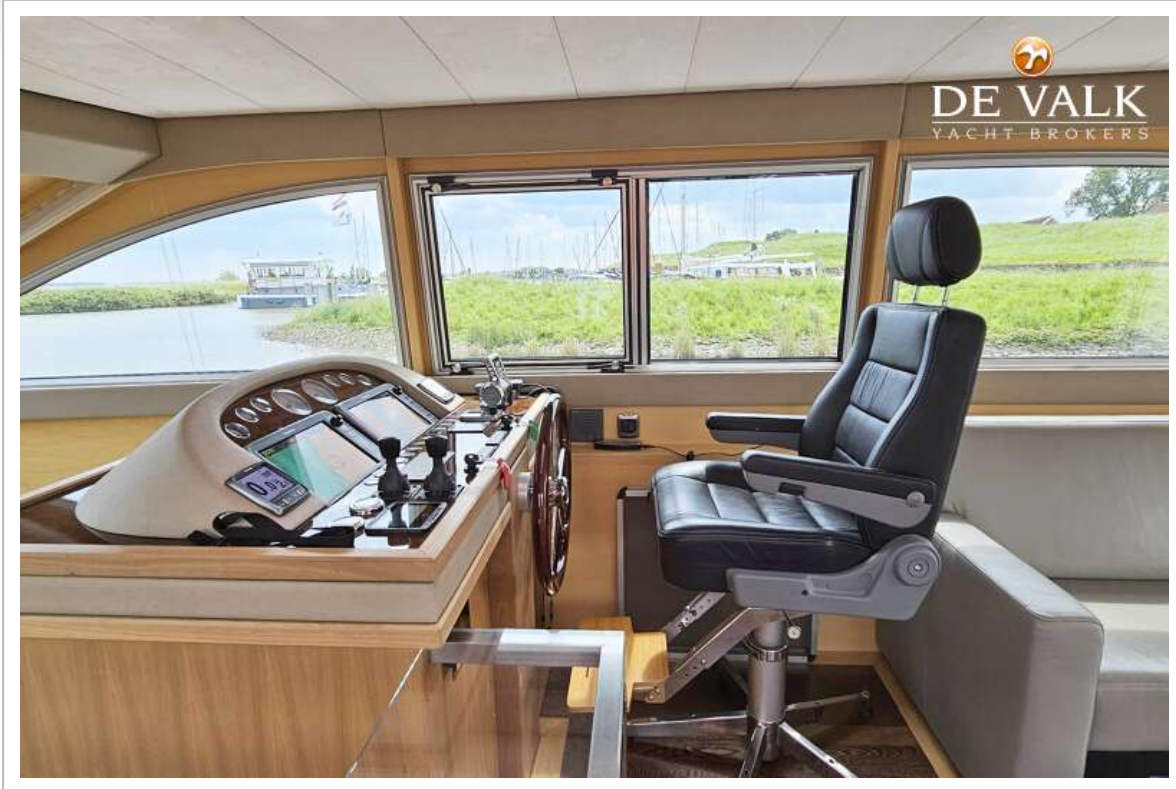
# VAN DEN HOVEN EXECUTIVE 1700



# VAN DEN HOVEN EXECUTIVE 1700



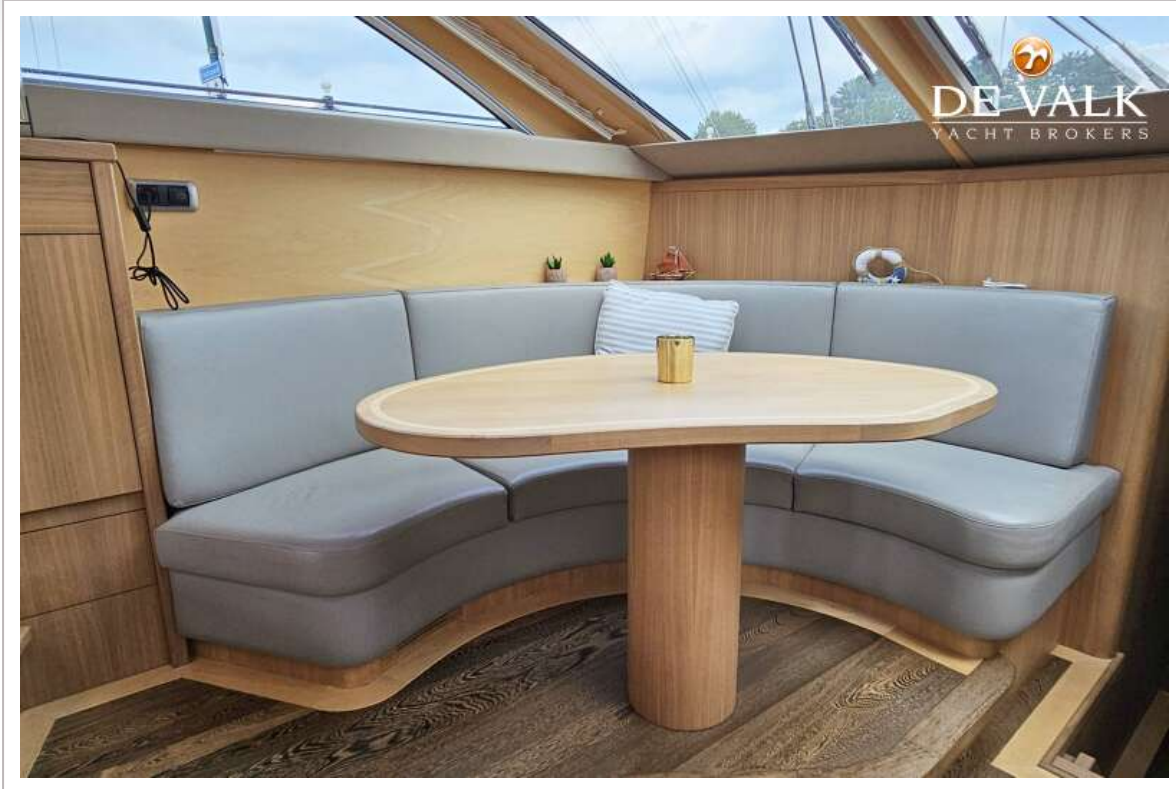
# VAN DEN HOVEN EXECUTIVE 1700



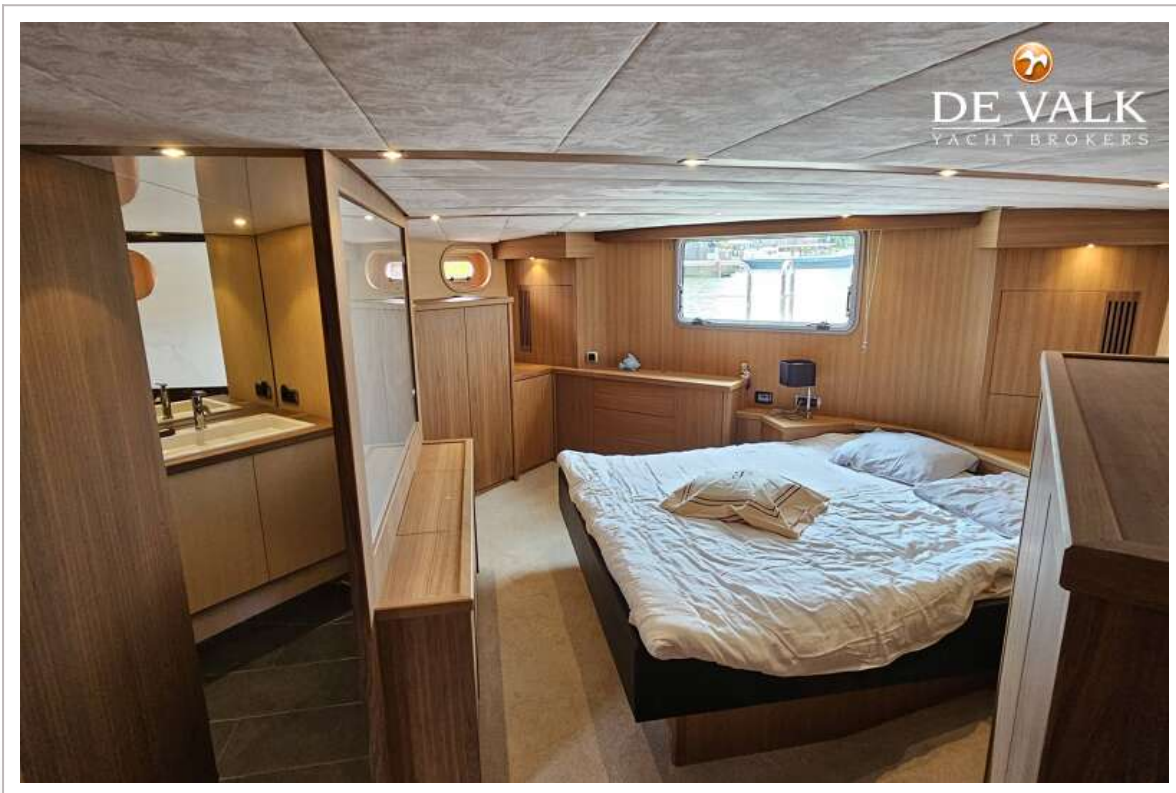
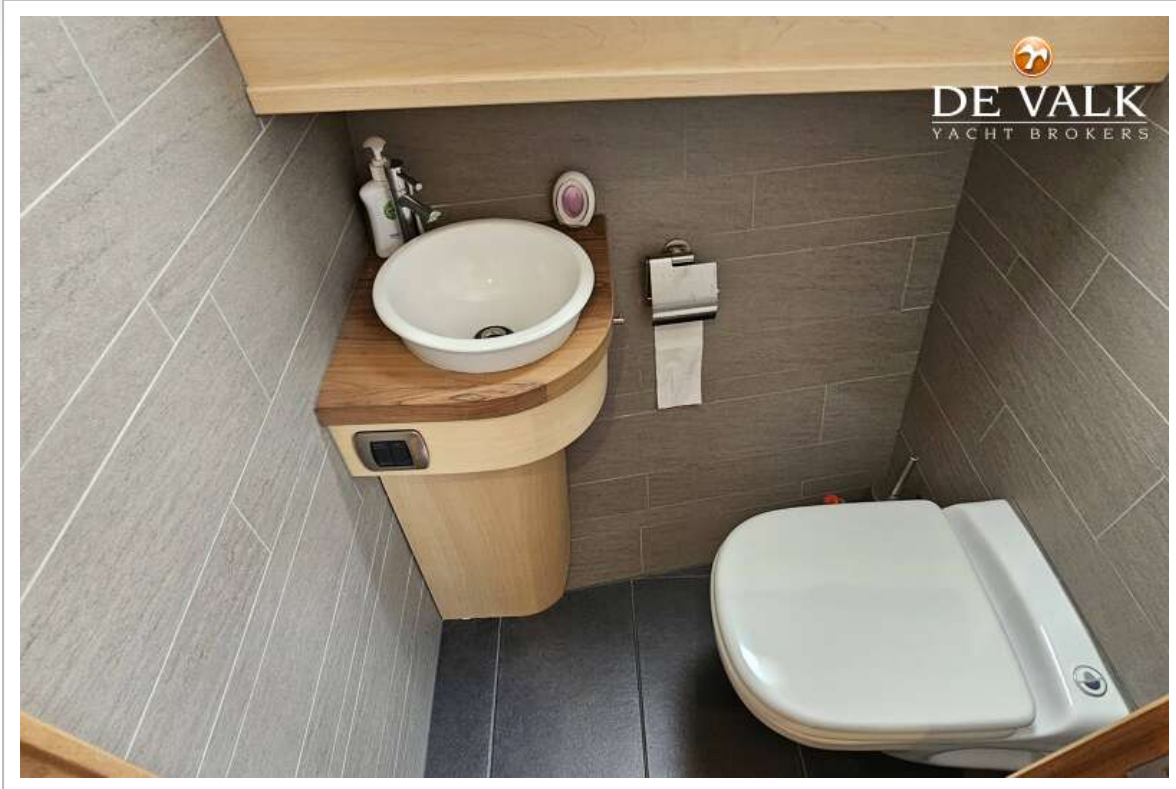
# VAN DEN HOVEN EXECUTIVE 1700



# VAN DEN HOVEN EXECUTIVE 1700









# VAN DEN HOVEN EXECUTIVE 1700

