



DE VALK  
YACHT BROKERS



LINSSEN 40 SE ROYAL



DE VALK  
YACHT BROKERS

# LINSSEN 40 SE ROYAL

## BROKER'S COMMENTS

Herewith we may offer a Linssen 40 SE Royal from the second owner. The hull and underwater ship have been provided with a new paint system and antifouling. Regardless of her age, this boat still looks neat and well maintained. With her 2 cabins and a convertible dinette, this Linssen offers berths for at least 6 people. The owner's cabin has an en suite bathroom. The boat has a Vetus bow thruster and a powerful Volvo Penta engine, for ideal maneuverability. Come and view this neat Linssen 40 SE Royal in Loosdrecht!

*Sjoerd Paddenburg*

## SPECIFICATIONS

<b>Dimensions</b>	12.35 x 3.85 x 1.20 (m)	<b>Builder</b>	Linssen Yachts
<b>Built</b>	1988	<b>Cabins</b>	2
<b>Material</b>	Steel	<b>Berths</b>	4
<b>Engine(s)</b>	1 x Volvo Penta TAMd41 diesel	<b>Hp/Kw</b>	192.00 (hp), 141.31 (kw)
<b>Asking price</b>	€ 99.000 (VAT Paid)	<b>Lying</b>	at sales office

## CONTACT

<b>Sales office</b>	De Valk Loosdrecht	<b>Telephone</b>	+31 35 582 90 30
<b>Address</b>	't Breukeleveense Meentje 6 1231 LM Loosdrecht / Wijdmeren The Netherlands	<b>E-mail</b>	loosdrecht@devalk.nl

## DISCLAIMER

These particulars are given in good faith as supplied but cannot be guaranteed.



# LINSSEN 40 SE ROYAL

## GENERAL

<b>Model</b>	LINSSEN 40 SE ROYAL
<b>Type</b>	motor yacht
<b>LOA (m)</b>	12,35
<b>Beam (m)</b>	3,85
<b>Draft (m)</b>	1,20
<b>Air draft (m)</b>	4,75
<b>Air draft min (m)</b>	3,00
<b>Headroom (m)</b>	2,00
<b>Year built</b>	1988
<b>Builder</b>	Linssen Yachts
<b>Country</b>	The Netherlands
<b>CE norm</b>	NA
<b>Hull material</b>	steel
<b>Hull colour</b>	white
<b>Hull shape</b>	V-shaped hull
<b>Superstructure material</b>	steel
<b>Rubbing strake</b>	rubber
<b>Deck material</b>	steel
<b>Deck finish</b>	teak
<b>Superstructure deck finish</b>	teak
<b>Cockpit deck finish</b>	teak
<b>Antifouling (year)</b>	2024
<b>Window frame</b>	polymer
<b>Window material</b>	glass
<b>Radar arch</b>	collapsible
<b>Fuel tank (litre)</b>	steel 2x 400
<b>Level indicator (fuel tank)</b>	yes
<b>Freshwater tank (litre)</b>	polyethylene 2x 250
<b>Level indicator (freshwater)</b>	yes
<b>Blackwater tank (litre)</b>	polyethylene



# LINSSEN 40 SE ROYAL

<b>Blackwater tank extraction</b>	deck extraction + pump
<b>Wheel steering</b>	hydraulic
<b>Inside helm position</b>	yes
<b>Outside helm position</b>	hydraulic
<b>More info on paintwork</b>	Painting new in 2024

## ACCOMMODATION

<b>Cabins</b>	2
<b>Berths</b>	4
<b>Interior</b>	teak
<b>Layout</b>	Owners cabin, saloon, dinette, guest cabin, bathroom and toilet
<b>Floor</b>	carpet
<b>Aft deck</b>	yes
<b>Saloon</b>	yes
<b>Headroom saloon (m)</b>	2,00
<b>Heating</b>	diesel ducted hot air Eberspärcher
<b>Chart table</b>	yes
<b>Aft Cabin</b>	yes
<b>Dinette</b>	yes
<b>Dinette to convert into berth</b>	2 persons
<b>Opening door to aft deck</b>	yes
<b>Galley</b>	yes
<b>Countertop</b>	wood Fineer
<b>Sink</b>	GRP
<b>Cooker</b>	calor gas 3x Burner
<b>Oven</b>	Silvercrest - Electric (loose)
<b>Fridge</b>	Dometic
<b>Freezer</b>	In fridge
<b>Hot water system</b>	220V + engine Boiler
<b>Water pressure system</b>	electrical
<b>Owners cabin</b>	double bed



# LINSSEN 40 SE ROYAL

Wardrobe	shelves
Bathroom	en suite
Toilet	en suite
Toilet system	manual
Wash basin	in the bathroom
Shower	en suite
Guest cabin 1	v-bed
Wardrobe	shelves
Bathroom	en suite
Toilet	en suite
Toilet system	manual
Wash basin	in the bathroom

## MACHINERY

No of engines	1
Make	Volvo Penta
Type	TAMd41
HP	192
kW	141.31
Fuel	diesel
Maximum speed (kn)	8
Cruising speed (kn)	6
Engine hours	3025
Engine cooling system	freshwater heat exchanger
Drive	shaft
Shaft seal	yes
Engine controls	bowden cable
Gearbox	hydraulic
Engine controls	bowden cable
Bowthruster	electric Vetus
Exhaust	watercooled



# LINSSEN 40 SE ROYAL

<b>Propeller type</b>	fixed
<b>Propeller shaft material</b>	stainless steel
<b>Shaft lubrication</b>	water
<b>Electric bilge pump</b>	yes
<b>Electrical installation</b>	12V/230V
<b>Start battery</b>	1x Bosch 12V 180Ah
<b>Service battery</b>	2x Bosch 12V 180Ah
<b>Battery charger</b>	Whisper Power WP-BC Supreme
<b>Shorepower</b>	with cable

## NAVIGATION

<b>Compass</b>	yes
<b>Depth sounder</b>	New 2024 Clipper
<b>VHF</b>	Shipmate rs 8300
<b>Autopilot</b>	Autohelm 6000 with remote (defect)
<b>Rudder angle indicator</b>	yes
<b>GPS</b>	Philips Navigator
<b>Navigation lights</b>	yes
<b>Searchlight</b>	yes

## EQUIPMENT

<b>Bathing platform</b>	yes
<b>Boarding ladder</b>	aluminum
<b>Anchor</b>	yes
<b>Anchor chain</b>	yes
<b>Windlass</b>	yes
<b>Davits</b>	aluminum
<b>Sea railing</b>	stainless steel
<b>Grab rail (superstructure)</b>	steel
<b>Wiper</b>	yes
<b>Horn</b>	electric



# LINSSEN 40 SE ROYAL

Fenders	yes
Mooring lines	yes
TV	Samsung
Clock - barometer	yes





# LINSSEN 40 SE ROYAL

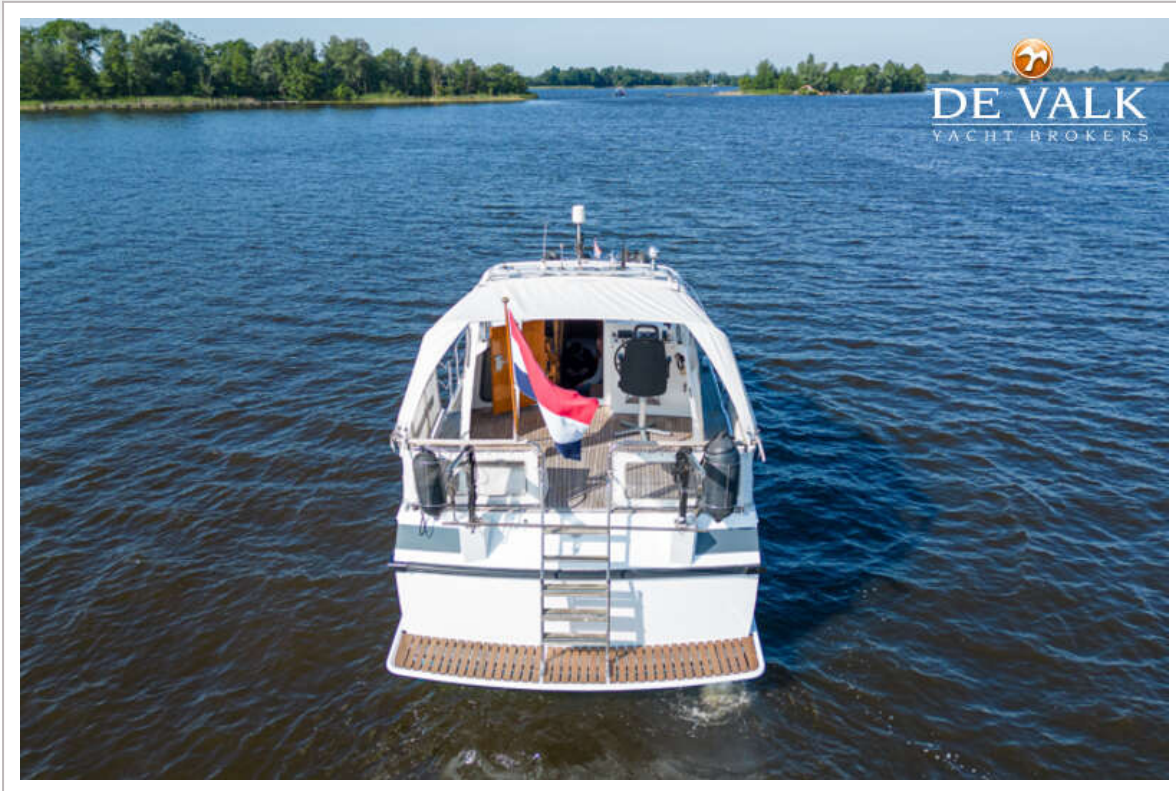




# LINSSEN 40 SE ROYAL



# LINSSEN 40 SE ROYAL

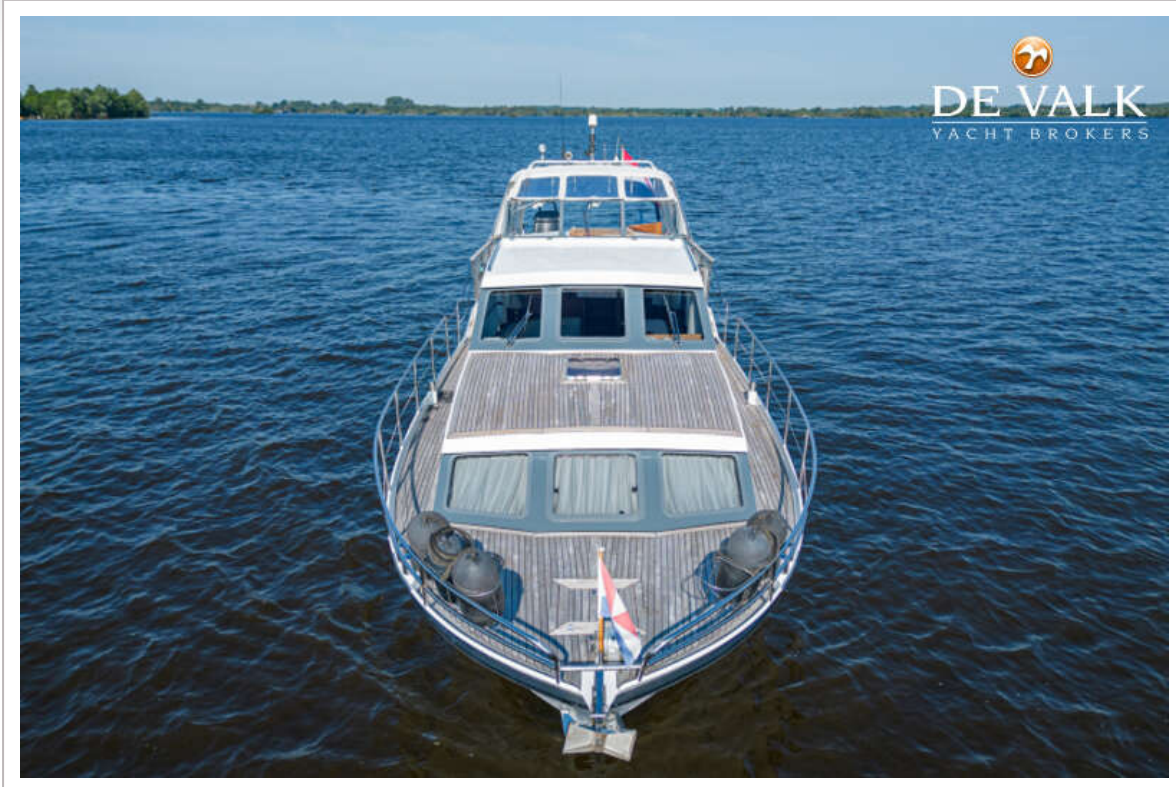




# LINSSEN 40 SE ROYAL



# LINSSEN 40 SE ROYAL



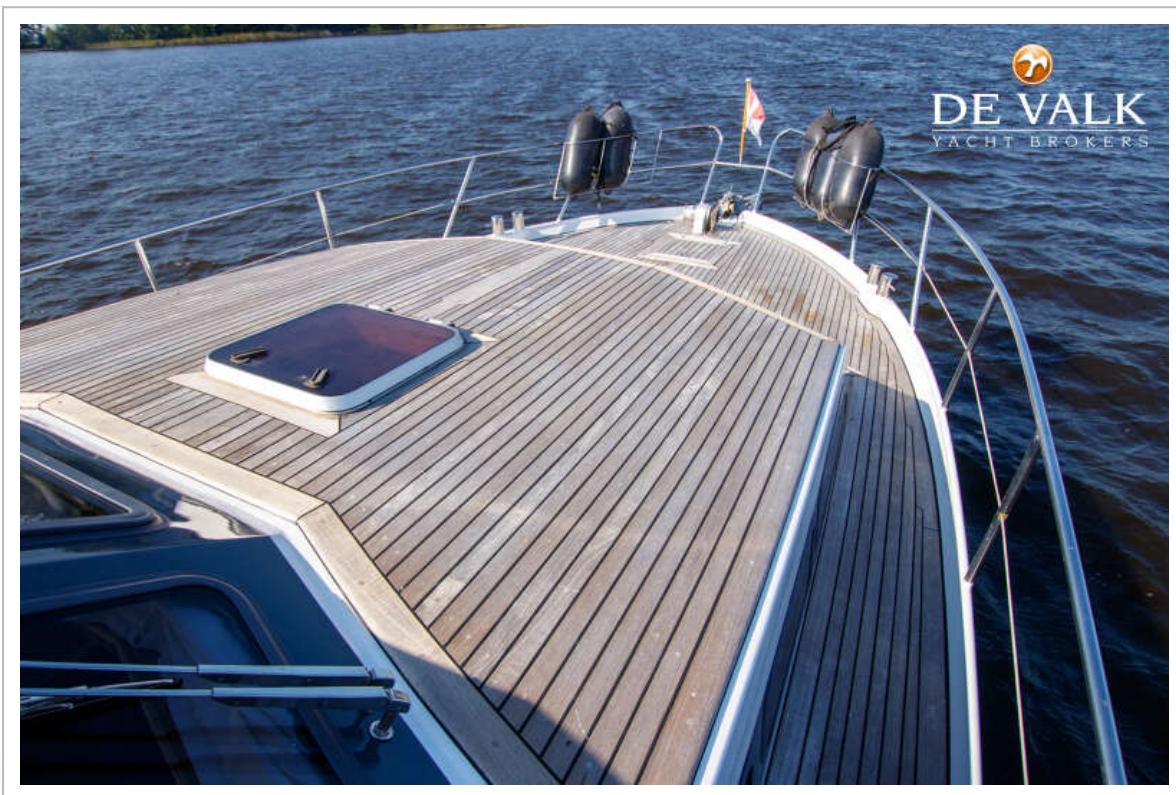
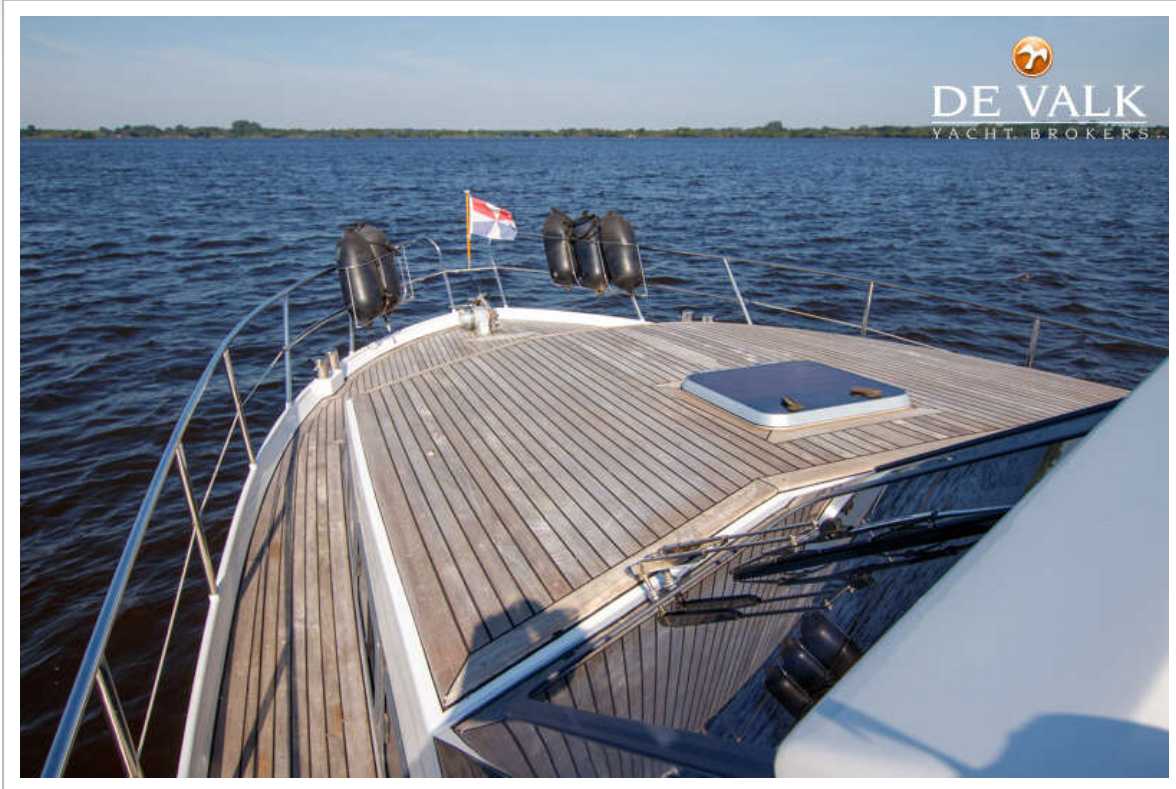


# LINSSEN 40 SE ROYAL





# LINSSEN 40 SE ROYAL





# LINSSEN 40 SE ROYAL

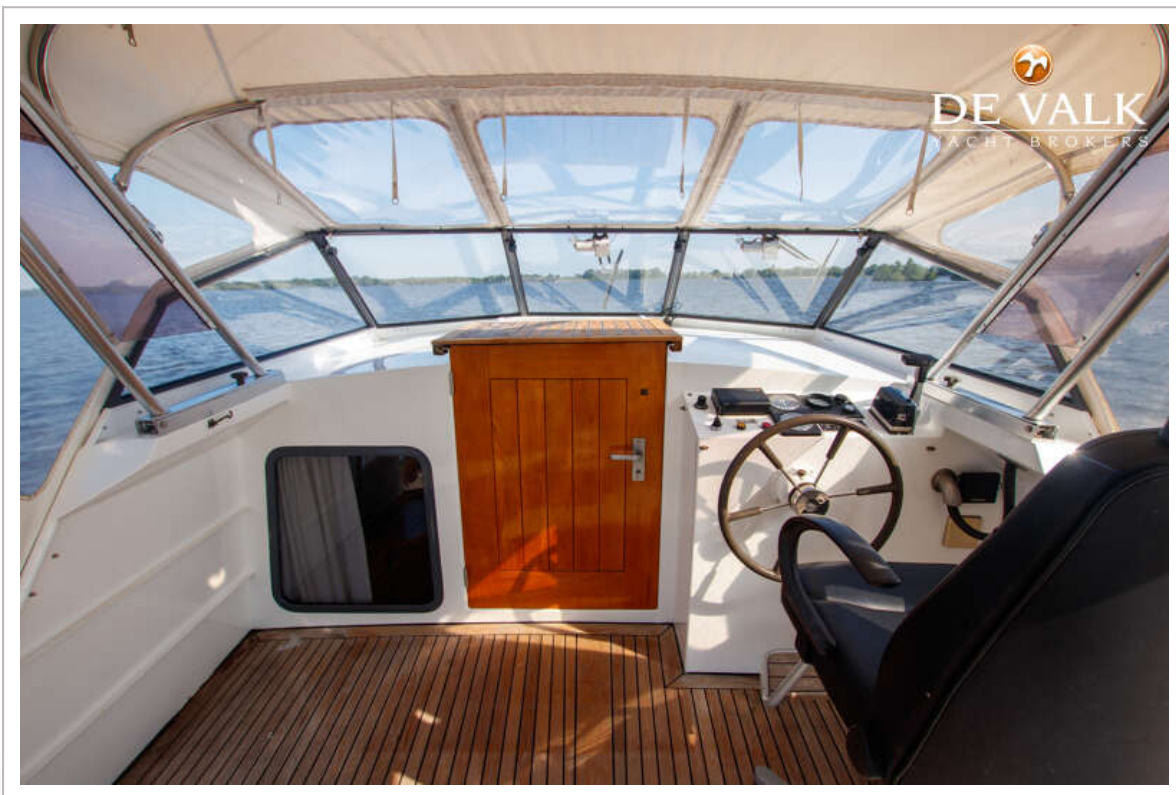




# LINSSEN 40 SE ROYAL

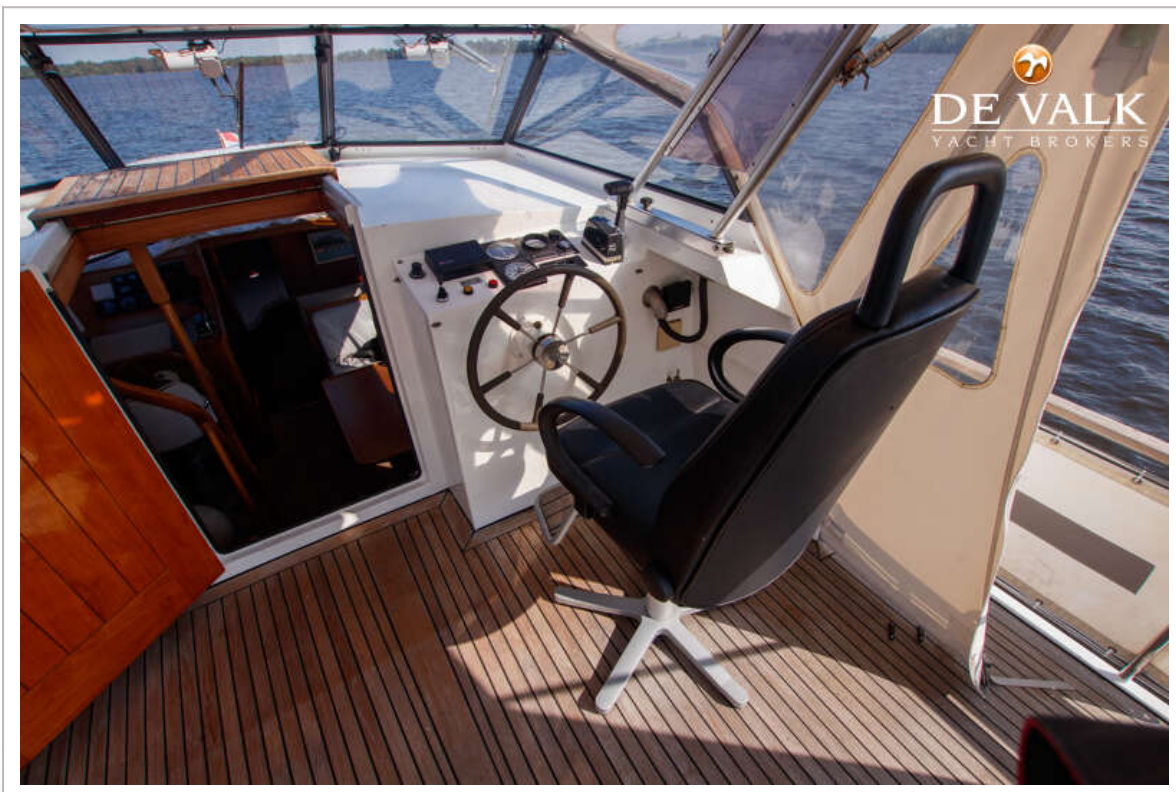
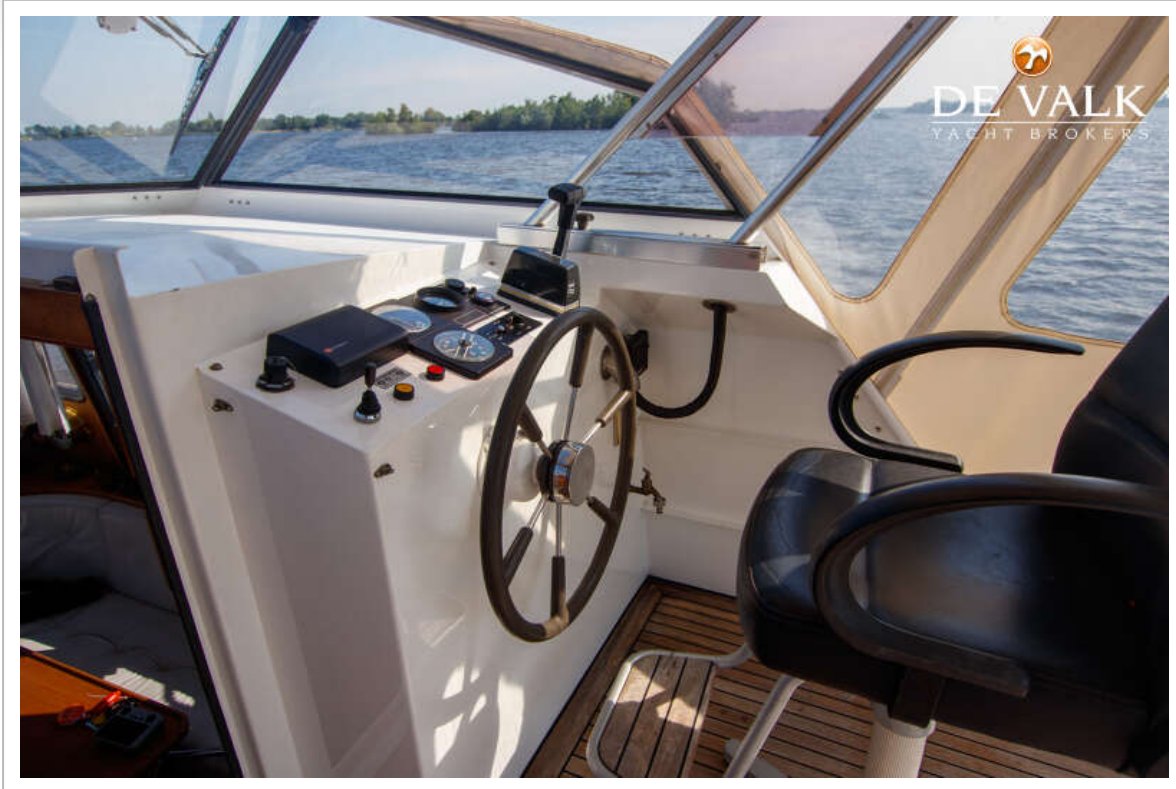


# LINSSEN 40 SE ROYAL





# LINSSEN 40 SE ROYAL

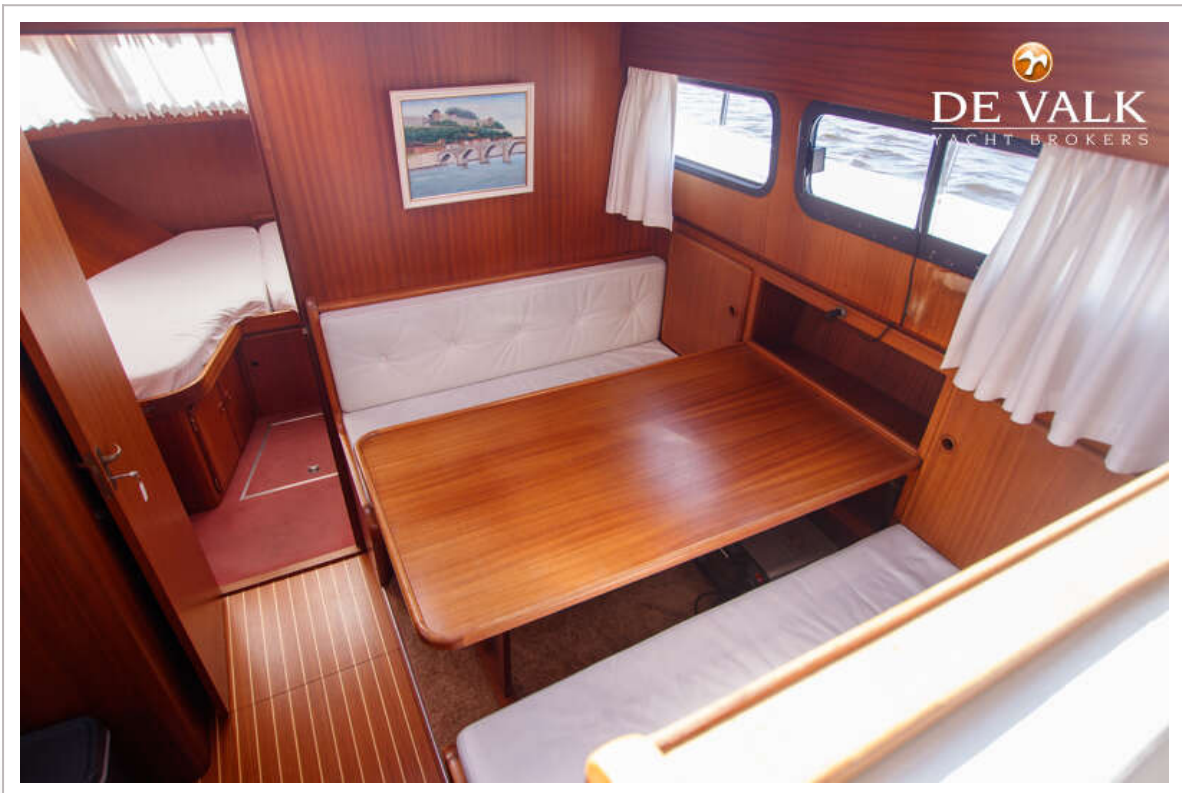
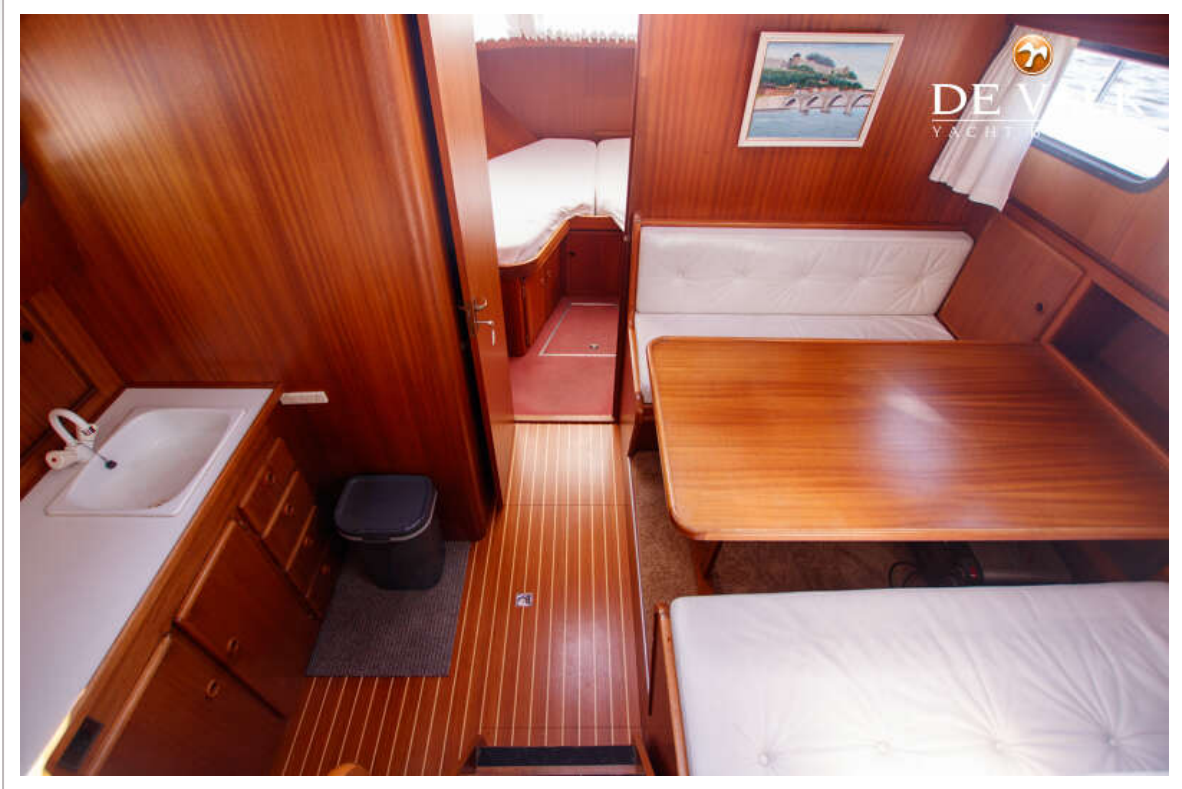


# LINSSEN 40 SE ROYAL

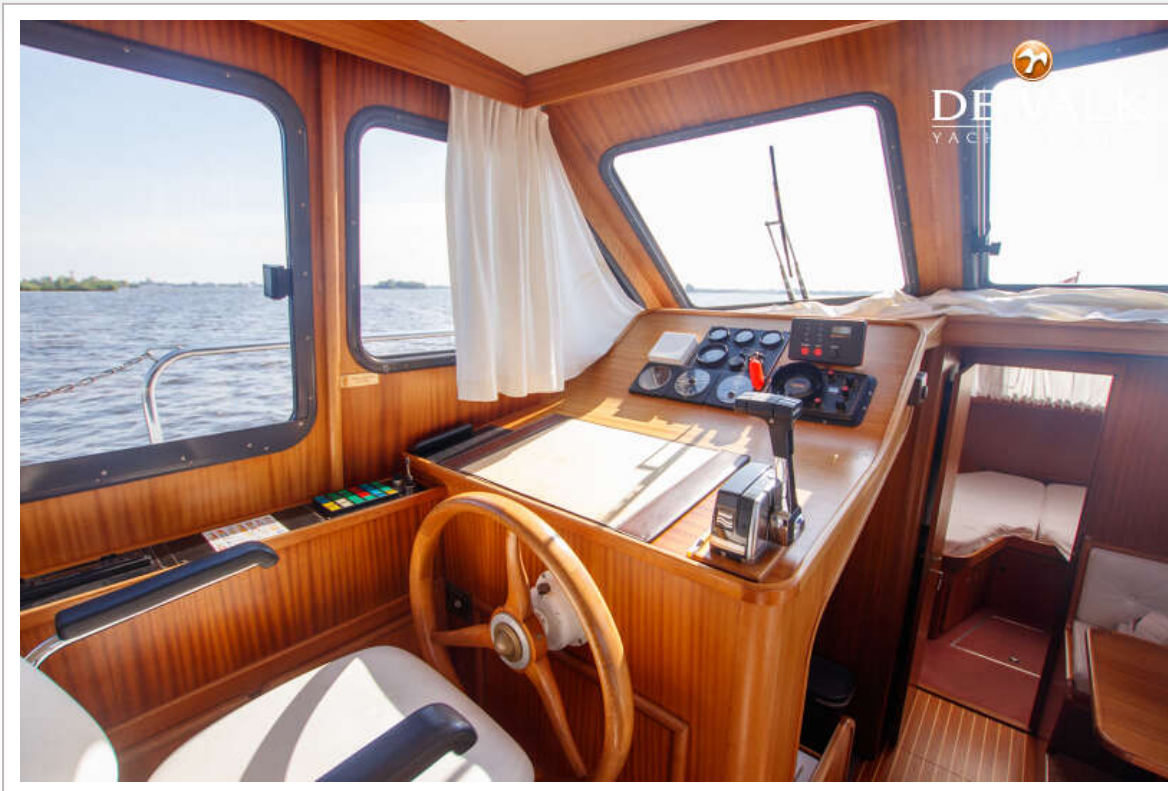




# LINSSEN 40 SE ROYAL

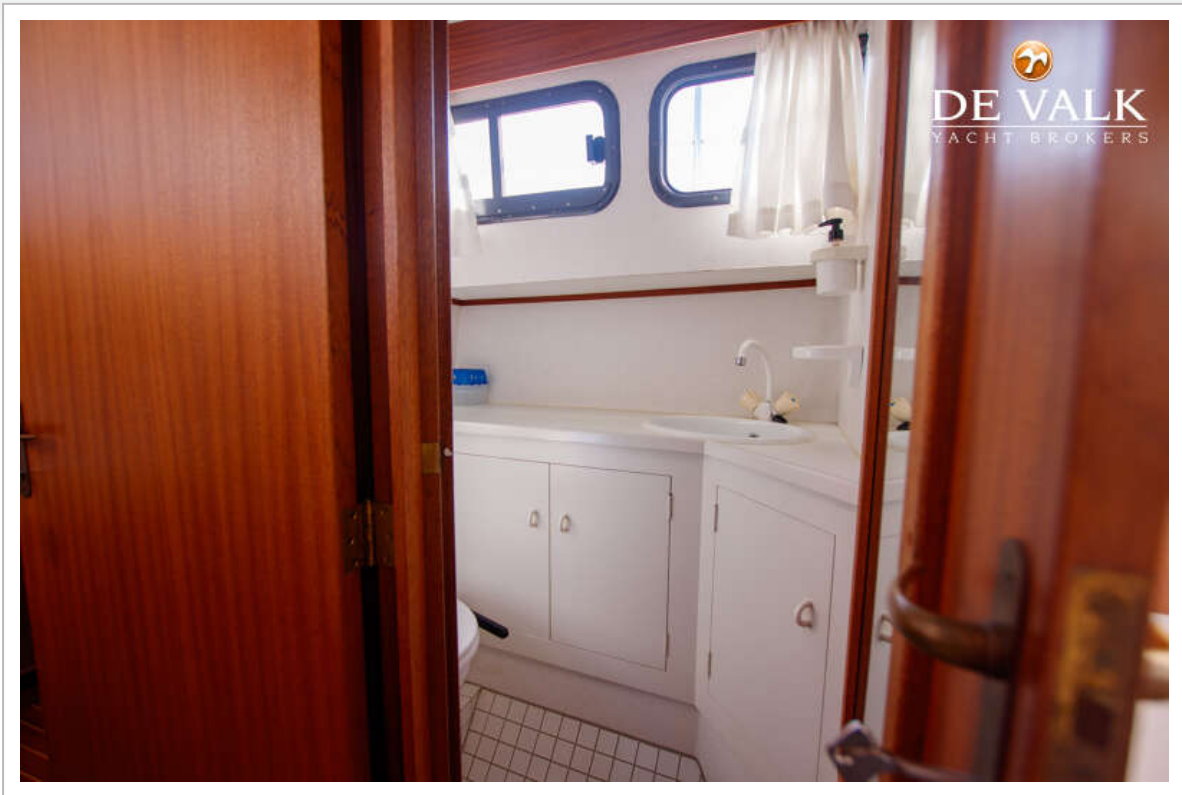


# LINSSEN 40 SE ROYAL



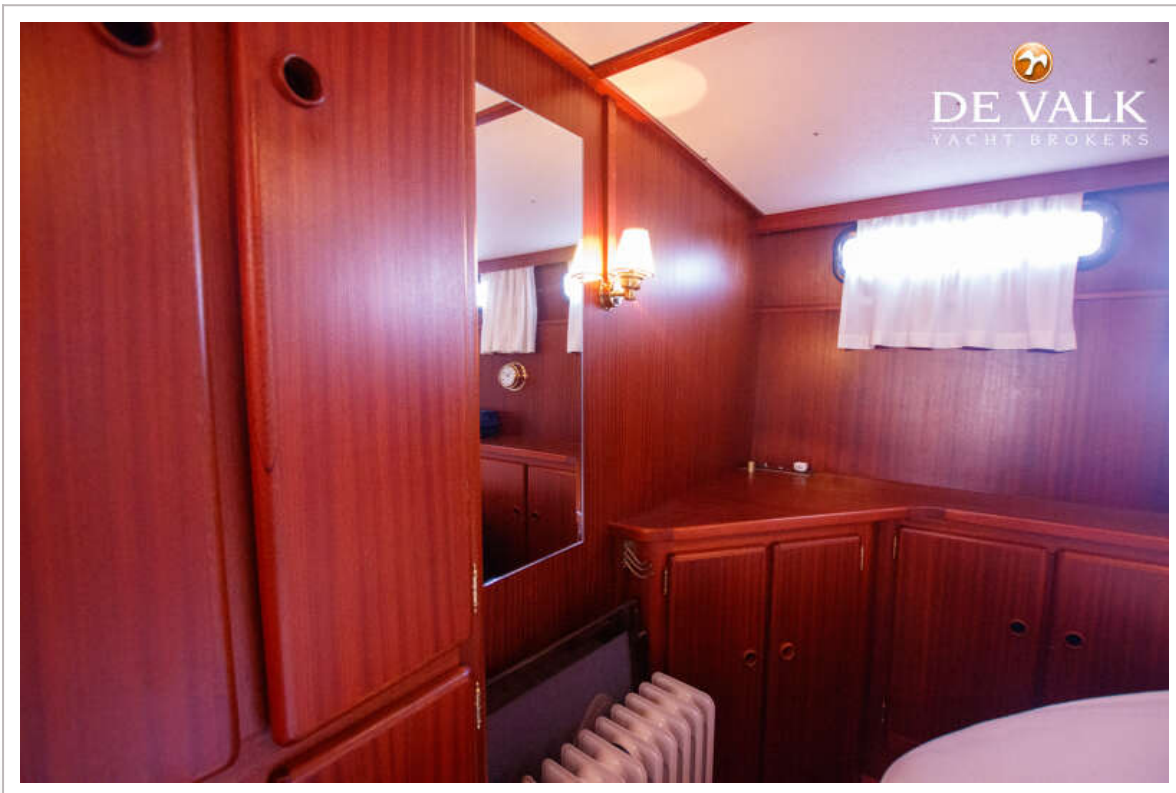
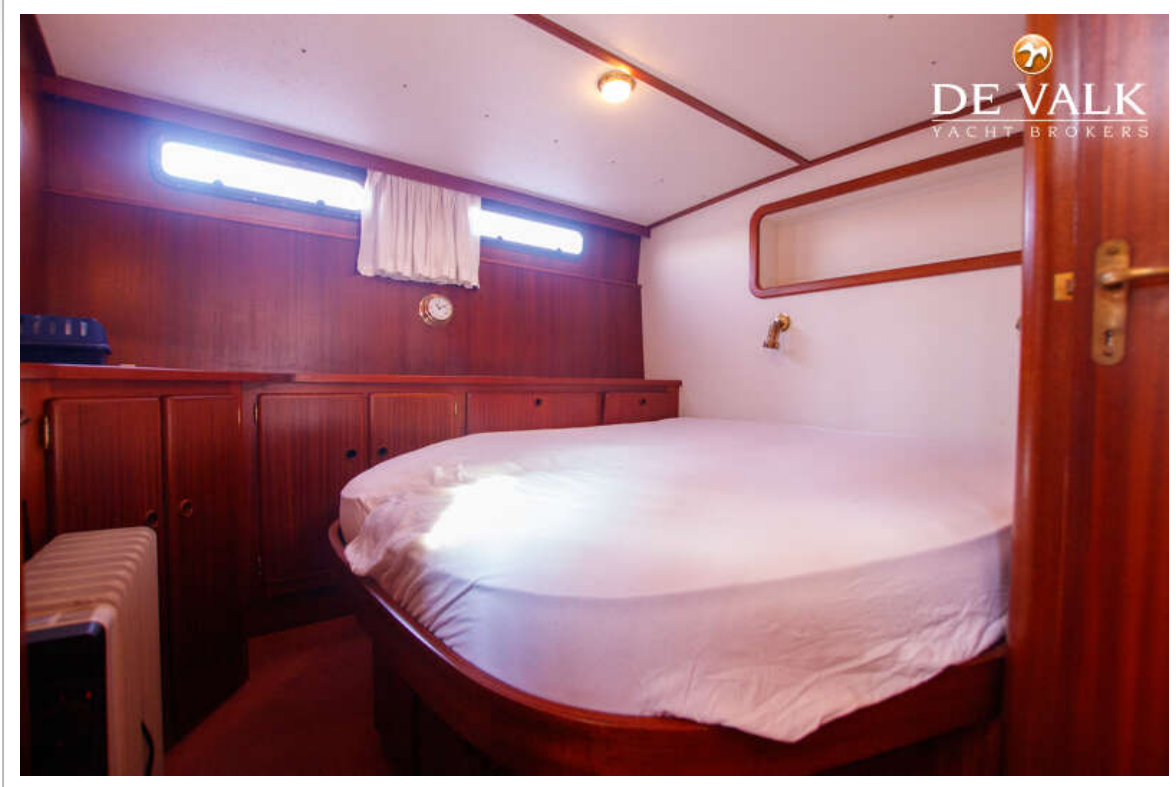


# LINSSEN 40 SE ROYAL

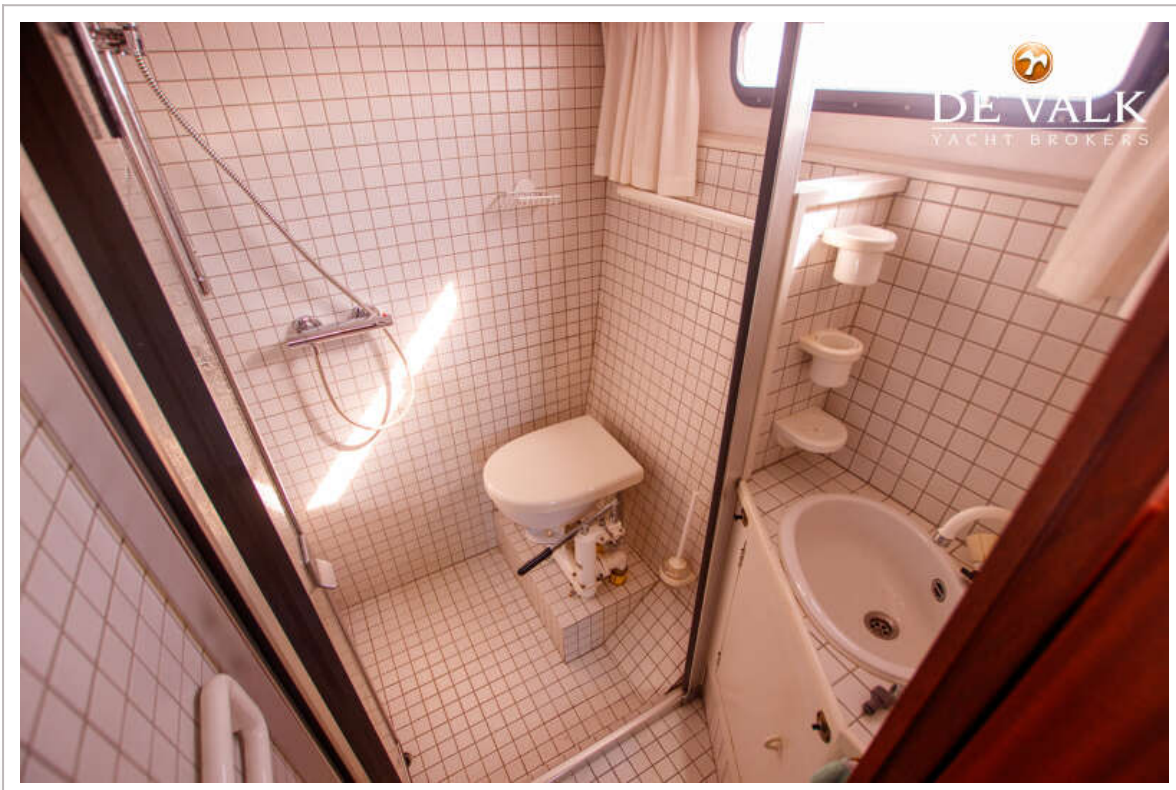
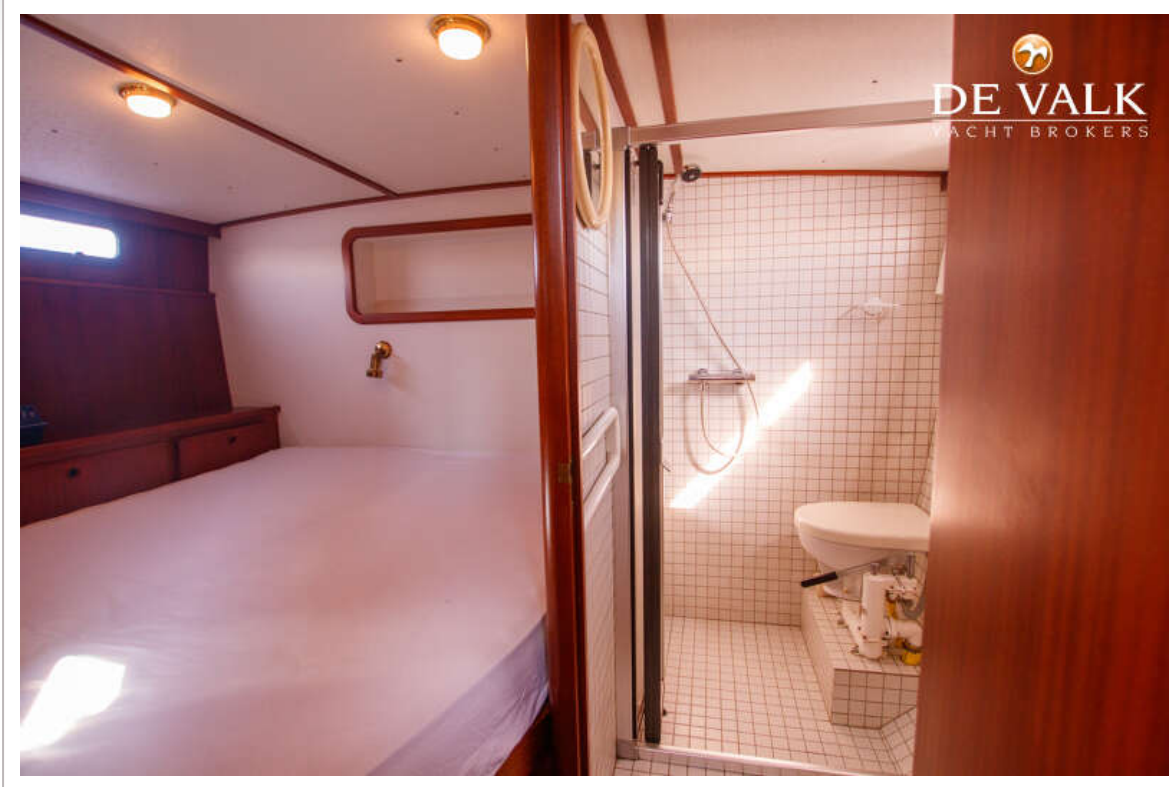




# LINSSEN 40 SE ROYAL



# LINSSEN 40 SE ROYAL



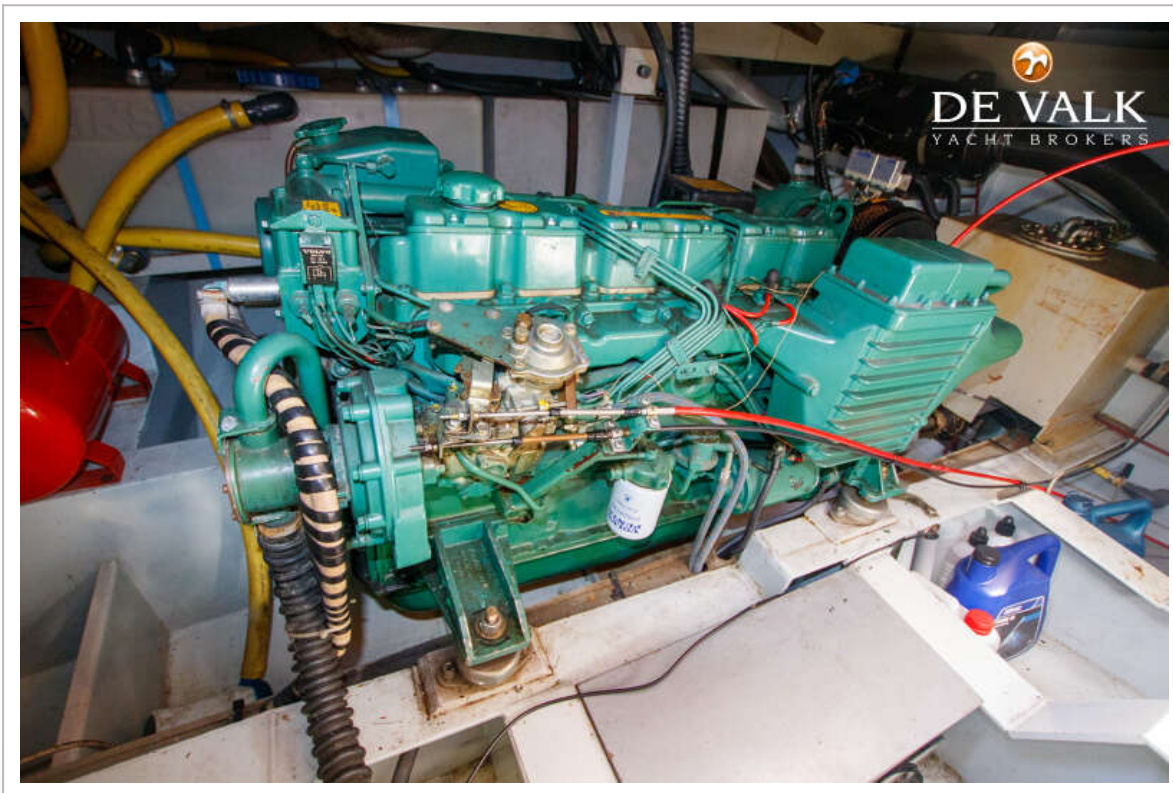


# LINSSEN 40 SE ROYAL



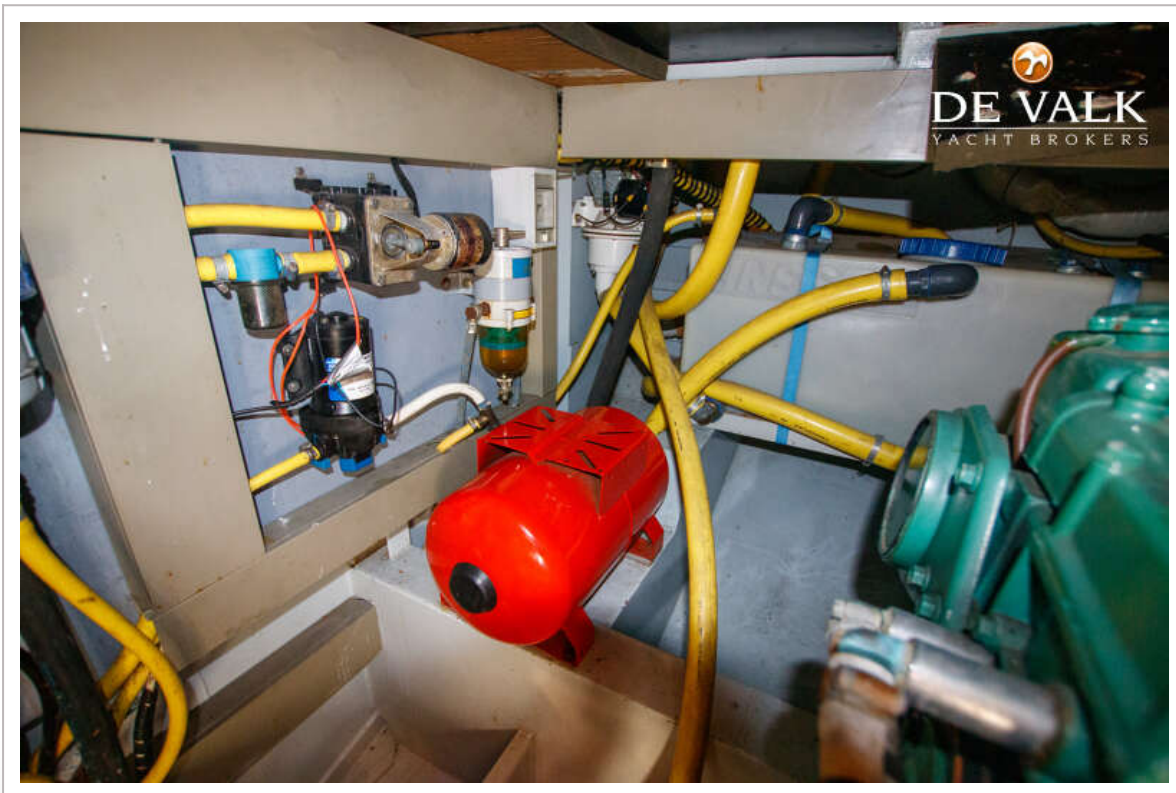


# LINSSEN 40 SE ROYAL





# LINSSEN 40 SE ROYAL



# LINSSEN 40 SE ROYAL

