



DE VALK  
YACHT BROKERS



HANSE 470E



DE VALK  
YACHT BROKERS

# HANSE 470E

## BROKER'S COMMENTS

This beautiful Hanse 470E is in good condition and is well equipped and has had many parts replaced in the last 3 years. Large and secure cockpit rigged for short-handed sailing, with 3 electric winch, self-tacking jib and retractable bow thruster, plus a more powerful engine. The popular layout with a double bed in the center line at the front and two double beds at the back. Ideal for performance sailing & cruises with family and friends. The yacht is in Greece and can be visited by appointment.

*Ger Bayens*

## SPECIFICATIONS

<b>Dimensions</b>	14.19 x 4.46 x 2.60 (m)	<b>Builder</b>	Hanse Yachts AG
<b>Built</b>	2009	<b>Cabins</b>	3
<b>Material</b>	GRP	<b>Berths</b>	6
<b>Engine(s)</b>	1 x Yanmar 4JH2-TE diesel	<b>Hp/Kw</b>	75.00 (hp), 55.20 (kw)
<b>Asking price</b>	€ 224.000 (VAT Paid)	<b>Lying</b>	contact sales office

## CONTACT

<b>Sales office</b>	De Valk Thuishaven	<b>Telephone</b>	+31 35 5829042
<b>Address</b>	Peperstraat 7 1411 PX Naarden The Netherlands	<b>E-mail</b>	thuishaven@devalk.nl

## DISCLAIMER

These particulars are given in good faith as supplied but cannot be guaranteed.



## GENERAL

<b>Model</b>	HANSE 470E
<b>Type</b>	sailing yacht
<b>LOA (m)</b>	14,19
<b>LWL (m)</b>	12,60
<b>Beam (m)</b>	4,46
<b>Draft (m)</b>	2,60
<b>Air draft (m)</b>	26,00
<b>Headroom (m)</b>	1,96
<b>Year built</b>	2009
<b>Launched</b>	2011
<b>Builder</b>	Hanse Yachts AG
<b>Country</b>	Germany
<b>Designer</b>	Judel / Vrolijk & Co
<b>Displacement (t)</b>	12
<b>Ballast (tonnes)</b>	lead 3
<b>CE norm</b>	A
<b>Hull material</b>	GRP
<b>Hull colour</b>	grey Light grey
<b>Hull shape</b>	round-bilged
<b>Keel type</b>	fin keel with bulb Stainless keelbolts
<b>Rubbing strake</b>	stainless steel
<b>Deck material</b>	teak
<b>Deck finish</b>	teak
<b>Cockpit deck finish</b>	teak
<b>Antifouling (year)</b>	2023
<b>Window material</b>	polycarbonate
<b>Deckhatch</b>	yes
<b>Portholes</b>	yes
<b>Fuel tank (litre)</b>	stainless steel 250
<b>Level indicator (fuel tank)</b>	yes



<b>Freshwater tank (litre)</b>	stainless steel 400
<b>Level indicator (freshwater)</b>	yes
<b>Blackwater tank (litre)</b>	stainless steel 2 x 30
<b>Wheel steering</b>	mechanical Jefa / leather renewed (2022) with wheel covers
<b>Emergency tiller</b>	yes
<b>More info on hull</b>	The hull is made of epoxy resin/polyester and is strong and water resistant
<b>Extra info</b>	All seacocks renewed

## ACCOMMODATION

<b>Cabins</b>	3
<b>Berths</b>	6
<b>Interior</b>	cherry Ohio
<b>Floor</b>	wood
<b>Saloon</b>	yes
<b>Headroom saloon (m)</b>	1,96
<b>Heating</b>	yes
<b>Navigation center</b>	yes
<b>Chart table</b>	yes
<b>Aft Cabin</b>	yes
<b>Dinette</b>	yes
<b>Opening door to cockpit</b>	yes
<b>Galley</b>	yes
<b>Countertop</b>	corian
<b>Sink</b>	corian 2x
<b>Cooker</b>	ENO
<b>Oven</b>	ENO
<b>Microwave/oven combi</b>	220V
<b>Fridge</b>	Isotherm 12vDC 130 litre fridge
<b>Water pressure system</b>	electrical
<b>Owners cabin</b>	French bed



<b>Bed length (m)</b>	2,00 x 1,46
<b>Wardrobe</b>	yes
<b>Bathroom</b>	en suite
<b>Toilet</b>	en suite
<b>Toilet system</b>	manual
<b>Wash basin</b>	in the bathroom
<b>Shower</b>	en suite
<b>Bath tub</b>	en suite
<b>Guest cabin 1</b>	double bed
<b>Bed length (m)</b>	2,00 x 1,50
<b>Wardrobe</b>	yes
<b>Bathroom</b>	shared
<b>Toilet</b>	shared
<b>Toilet system</b>	manual
<b>Wash basin</b>	in the bathroom
<b>Shower</b>	shared
<b>Guest cabin 2</b>	double bed
<b>Bed length (m)</b>	2,00m x 1,50
<b>Wardrobe</b>	yes
<b>Bathroom</b>	separate
<b>Toilet</b>	yes

## MACHINERY

<b>No of engines</b>	1
<b>Make</b>	Yanmar
<b>Type</b>	4JH2-TE
<b>HP</b>	75
<b>kW</b>	55.20
<b>Fuel</b>	diesel
<b>Year installed</b>	2009
<b>Maximum speed (kn)</b>	8



# HANSE 470E

<b>Cruising speed (kn)</b>	7
<b>Consumption (l/hr)</b>	4,5
<b>Engine hours</b>	1250
<b>Engine cooling system</b>	freshwater heat exchanger
<b>Drive</b>	sail-drive
<b>Saildrive seal</b>	renewed 2021
<b>Engine controls</b>	bowden cable
<b>Gearbox</b>	mechanical Gearbox overhauled (2022)
<b>Bowthruster</b>	electric Max Power Vip 150 retractable
<b>Exhaust</b>	watercooled
<b>Propeller type</b>	folding
<b>Propeller blades</b>	3
<b>Manual bilge pump</b>	yes
<b>Electric bilge pump</b>	yes
<b>Electrical installation</b>	12/220V
<b>Batteries</b>	yes
<b>Start battery</b>	2x 12V 90 Ah
<b>Service battery</b>	4x 12V 95 Ah (2023)
<b>Bowthruster battery</b>	2X
<b>Battery charger/inverter</b>	12V/220V 20Amp Victron Combi
<b>Solar panel</b>	590W Solbian Solar Panels (2021)
<b>Diode battery combiners</b>	yes
<b>Shorepower</b>	with cable
<b>Watermaker</b>	Spectra Ventura (2021)

## NAVIGATION

<b>Compass</b>	Plastimo Contest 130
<b>Electric compass</b>	on the autopilot Simrad
<b>Depth sounder/log</b>	Simrad IS20
<b>Windset</b>	Simrad IS20
<b>VHF</b>	Simrad RS82 with DSC



VHF handheld	yes
Autopilot	Simrad AP44 (2024)
Radar/GPS/plotter	GPS, radar and chart plotter B & G (2019)
EPIRB	Ocean Signal 406 mhz CAT 1 GPS EPIRB (2020)

## EQUIPMENT

Sprayhood	yes
Bimini	yes
Cockpit cushions	yes
Cockpit table	yes
Boarding ladder	stainless steel
Gangway	yes
Deck shower	yes
Anchor	Delta 25 Kg
Anchor chain	80 mtr stainless steel (2021)
Windlass	electrical Lewmar 12V DC Controled (2022)
Capstan	Lewmar 12V DC
Deck wash	in the anchor locker
Dinghy	3D dinghy 2,80 (2022)
Outboard	Mercury 9.9 (2022)
Sea railing	yes
Railing side opening gates	2x
Pushpit	yes
Pulpit	yes
Life raft	Plastimo (2020)
Life raft (pers)	6
Lifejackets	6x
Lifebuoy	2x
Fenders	yes
Mooring lines	yes
Sub-woofer	(2022)



Speakers in salon	Kicker Speaker set (2022)
Fire extinguisher	2x (2020)
Extra info	Fusion HIFI set (2022),

## RIGGING

Rigging	fractional
Standing rigging	wire 2009
Brand mast	Seldén
Material mast	aluminium
Spreaders	3 sets
Keel stepped mast	yes
Mainsail cover	with lazy jacks
Battcars	Harken
Fully battened mainsail	Doyle Stratis (2019)
Jib	Doyle Stratis (2019)
Genoa furler	Harken
A-symmetric spi	with snuffer
Self tacking jib installation	yes
Reefing System	quick-one-line-reefing
Backstay adjuster	yes
Boomvang	mechanical and tackle
Primary sheet winch	Electric 2x Lewmar 54STE
Secondary sheet winch	2x 46 ST
Spinnaker winch	2x
Reefing winch	yes





# HANSE 470E

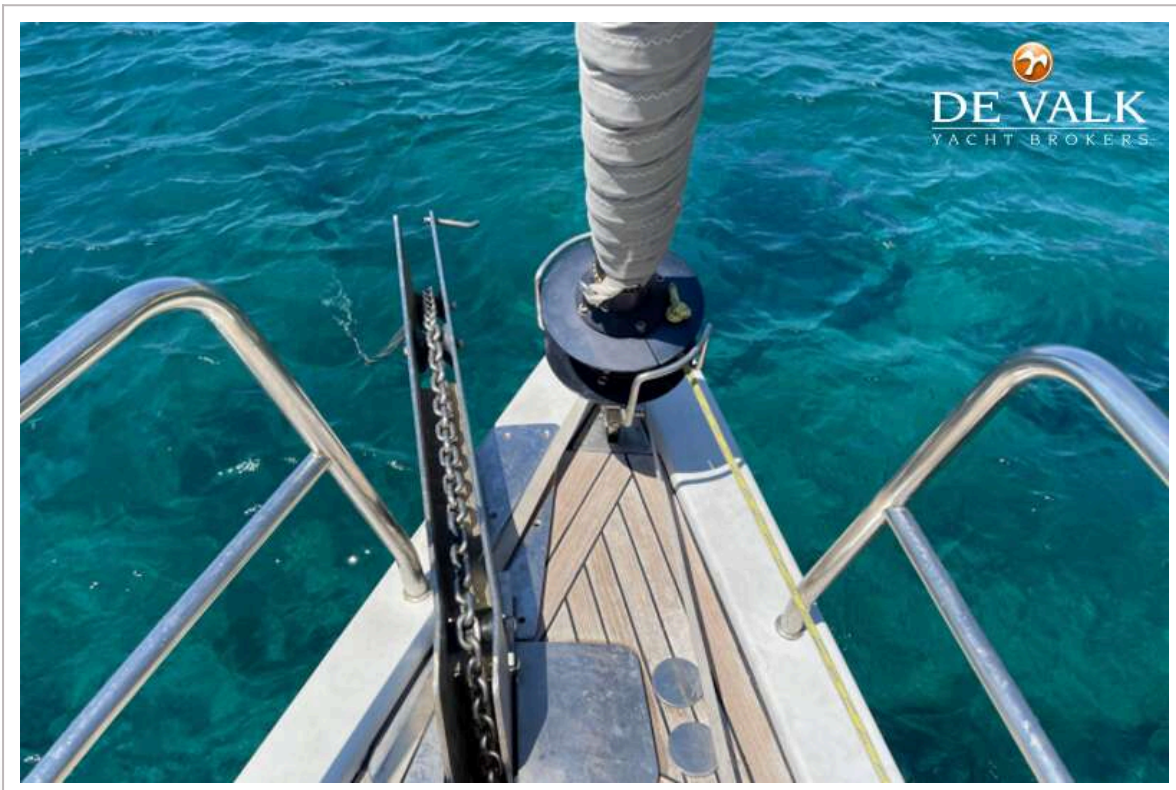


# HANSE 470E



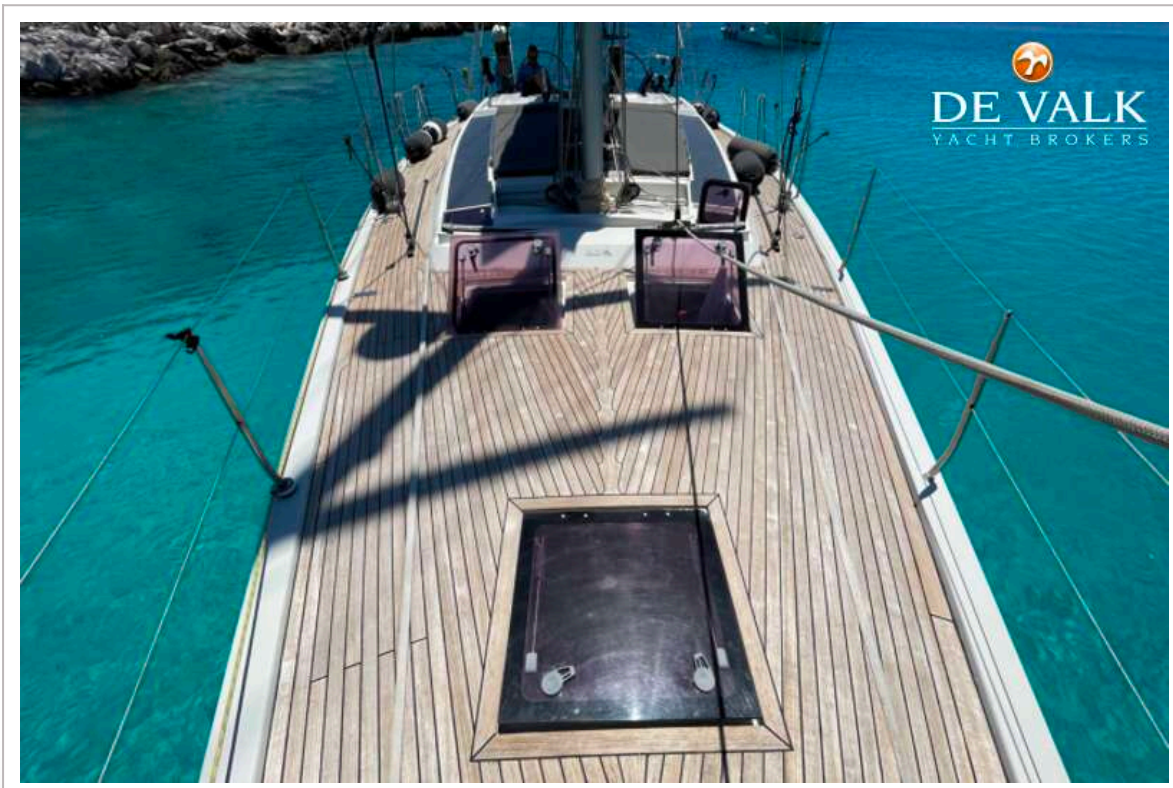


# HANSE 470E





# HANSE 470E

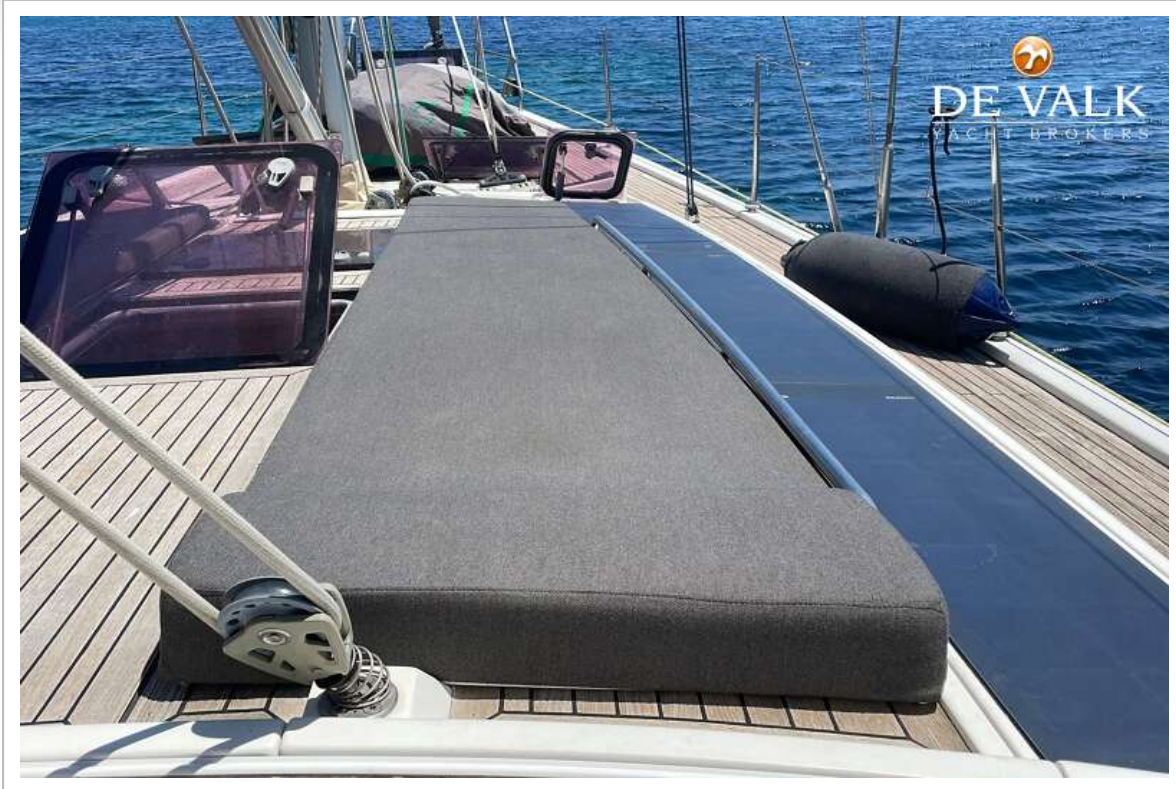


# HANSE 470E





# HANSE 470E



# HANSE 470E





# HANSE 470E





# HANSE 470E



# HANSE 470E

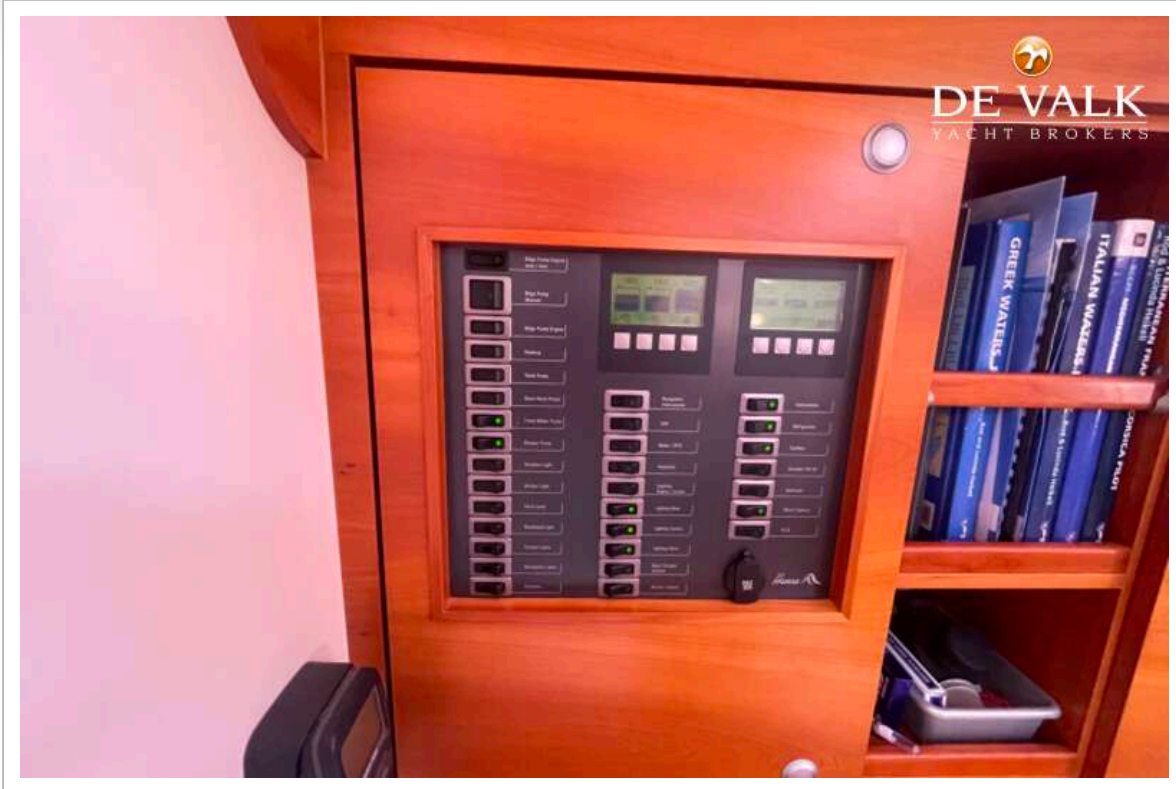




# HANSE 470E

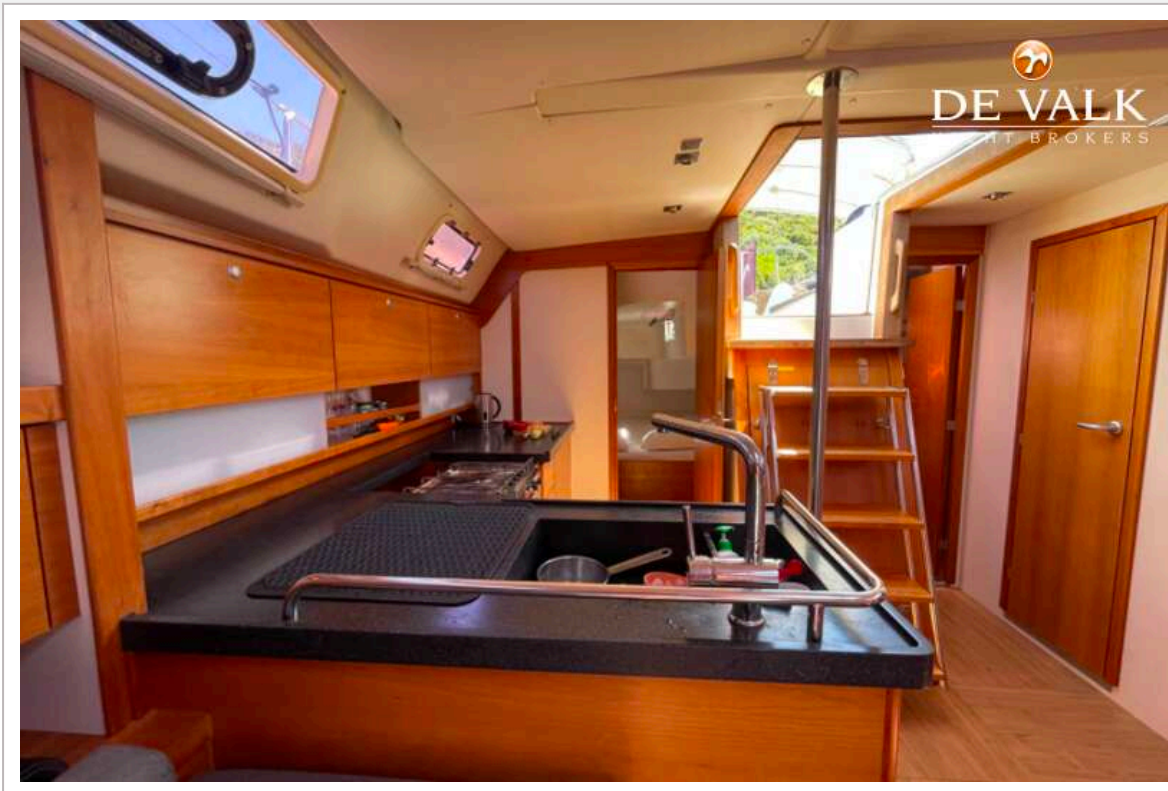


# HANSE 470E





# HANSE 470E

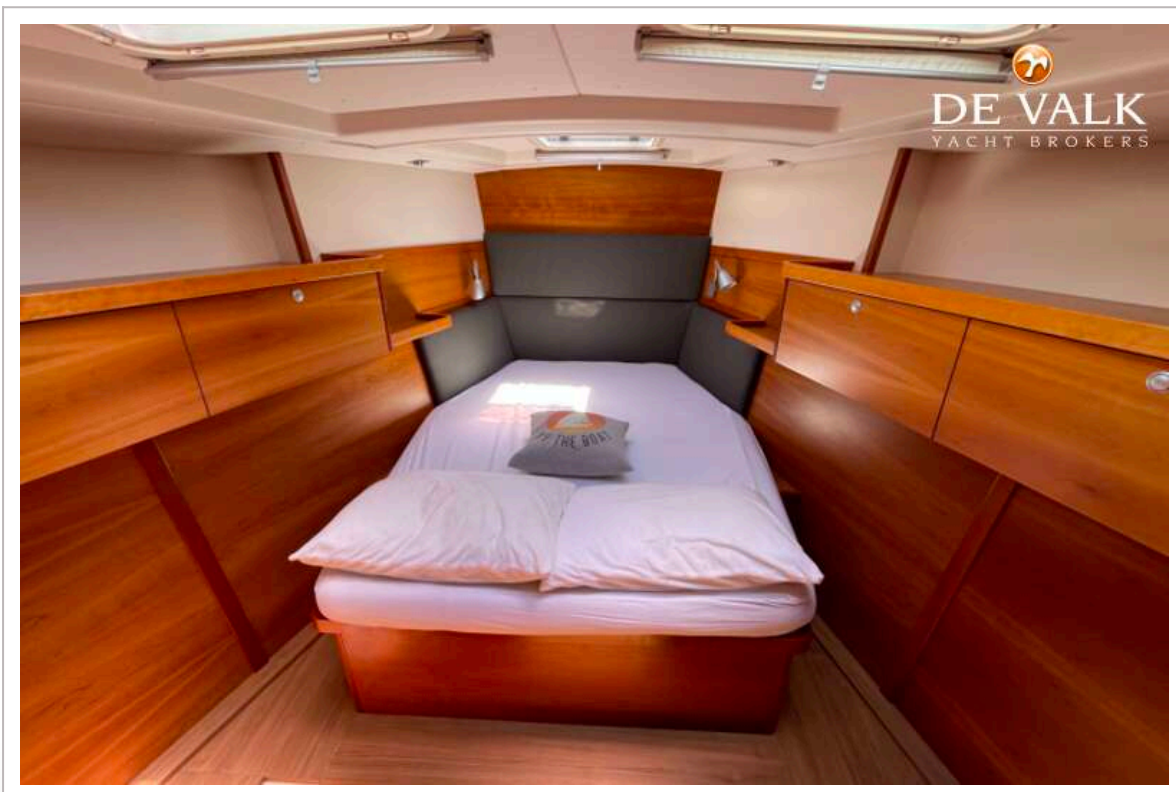


# HANSE 470E

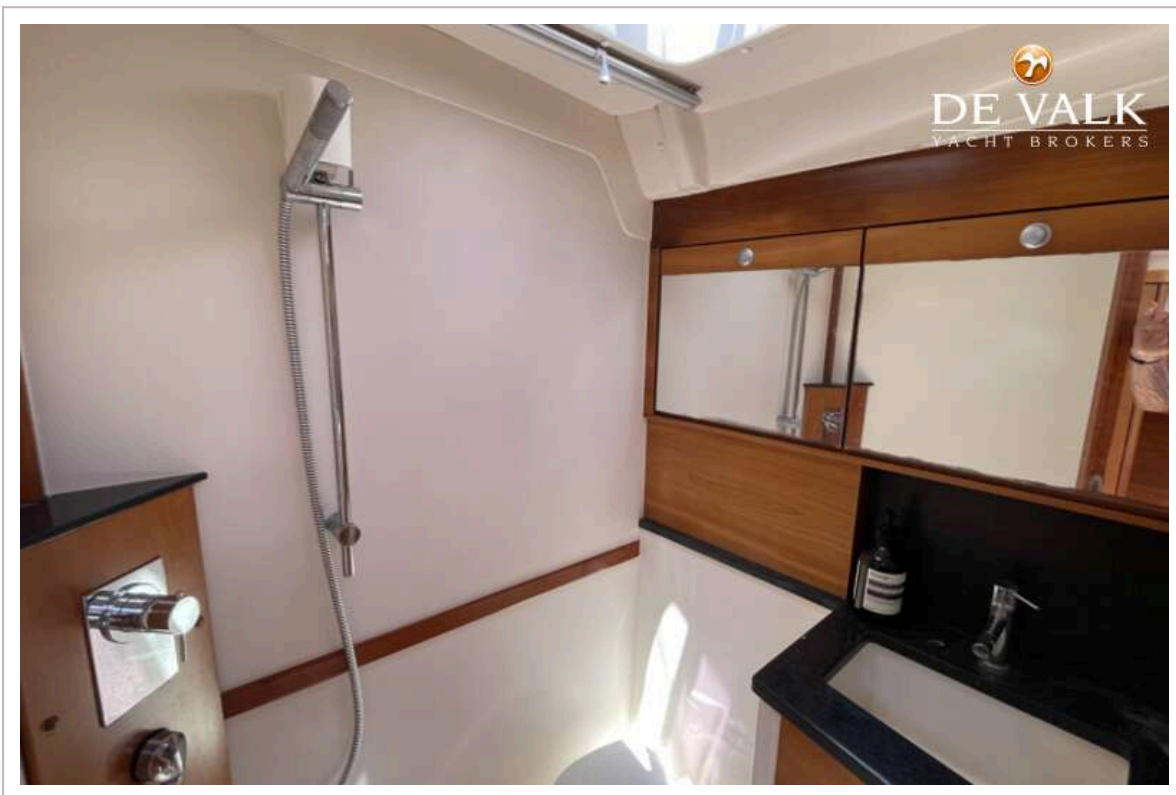




# HANSE 470E

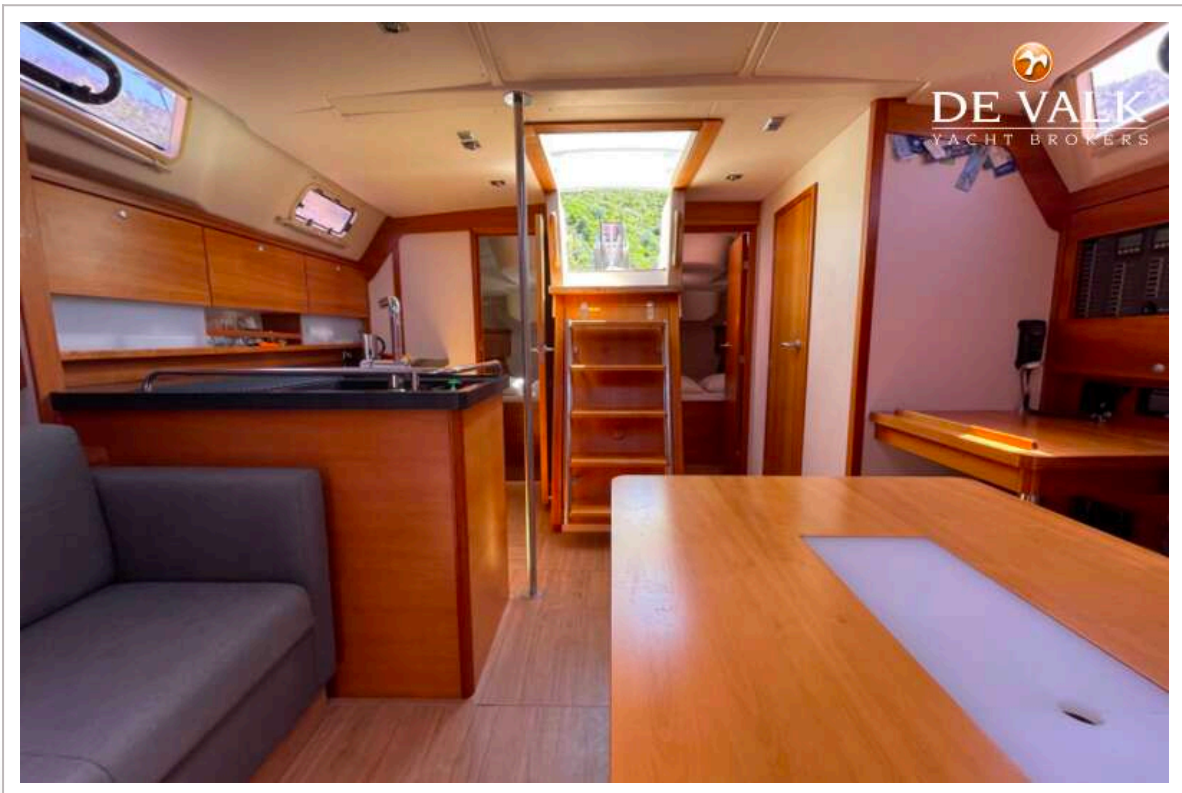
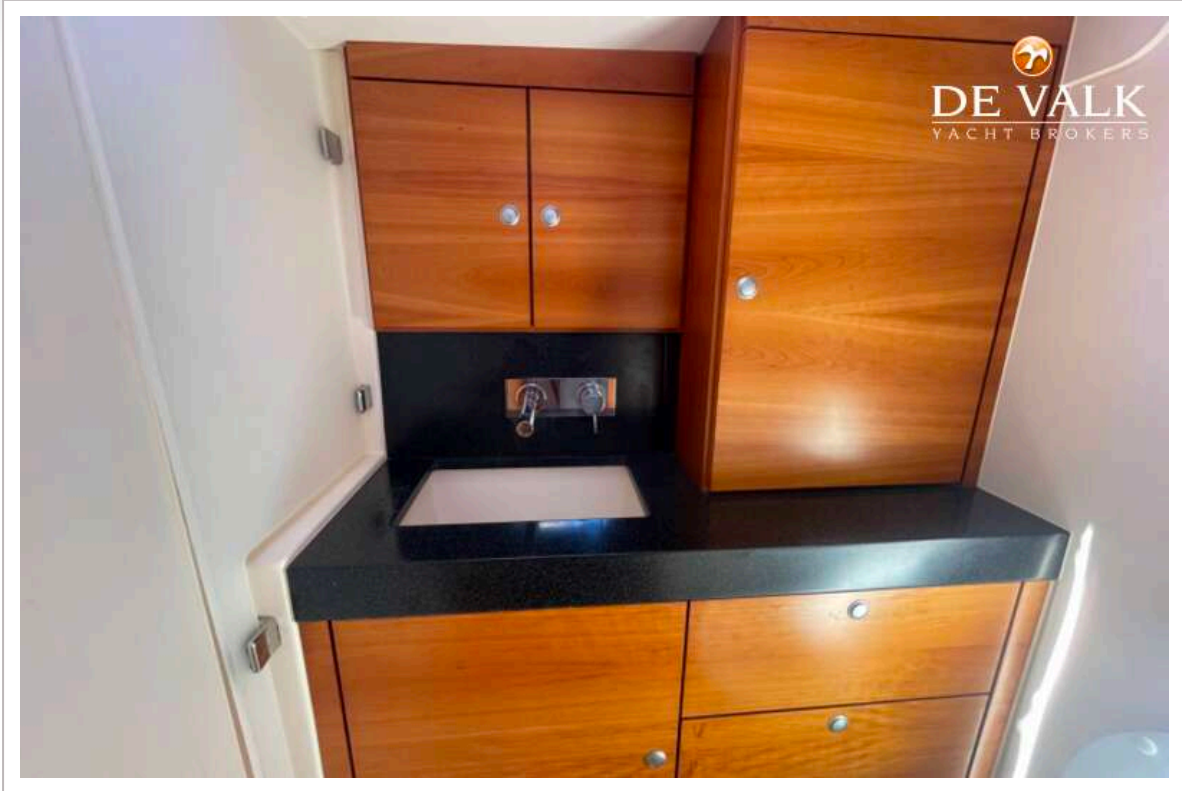


# HANSE 470E

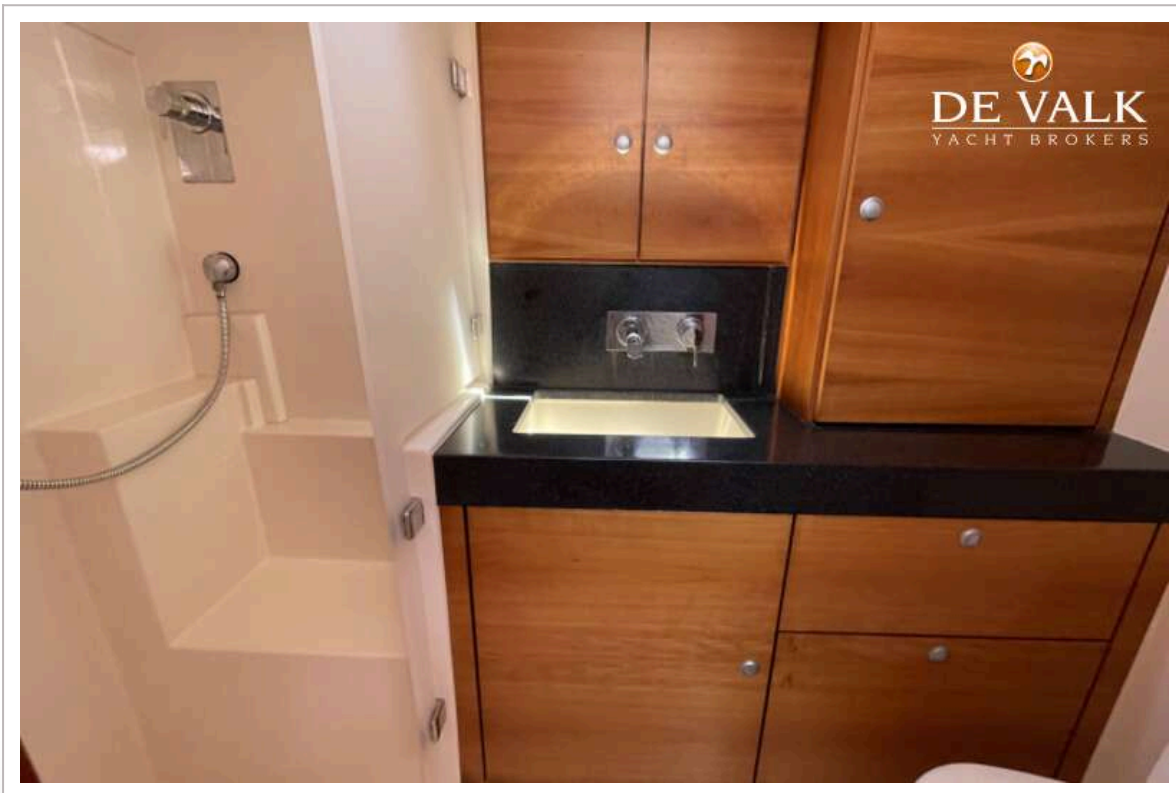
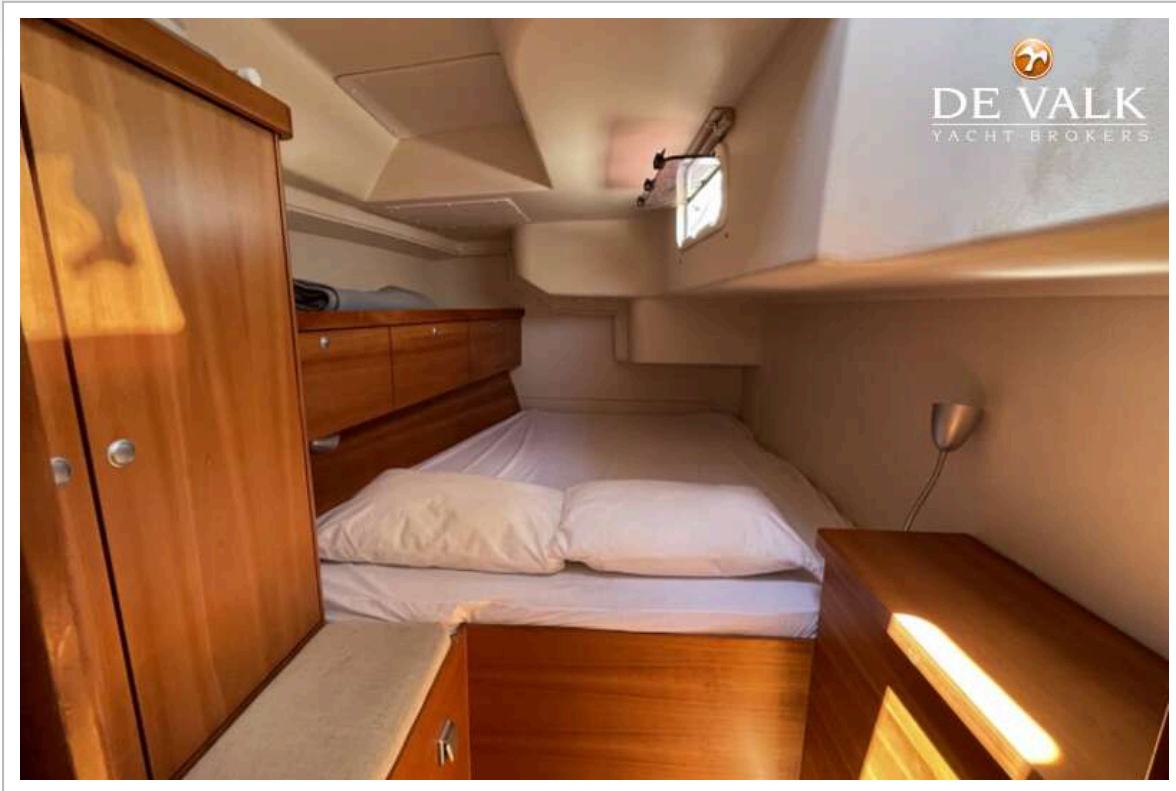




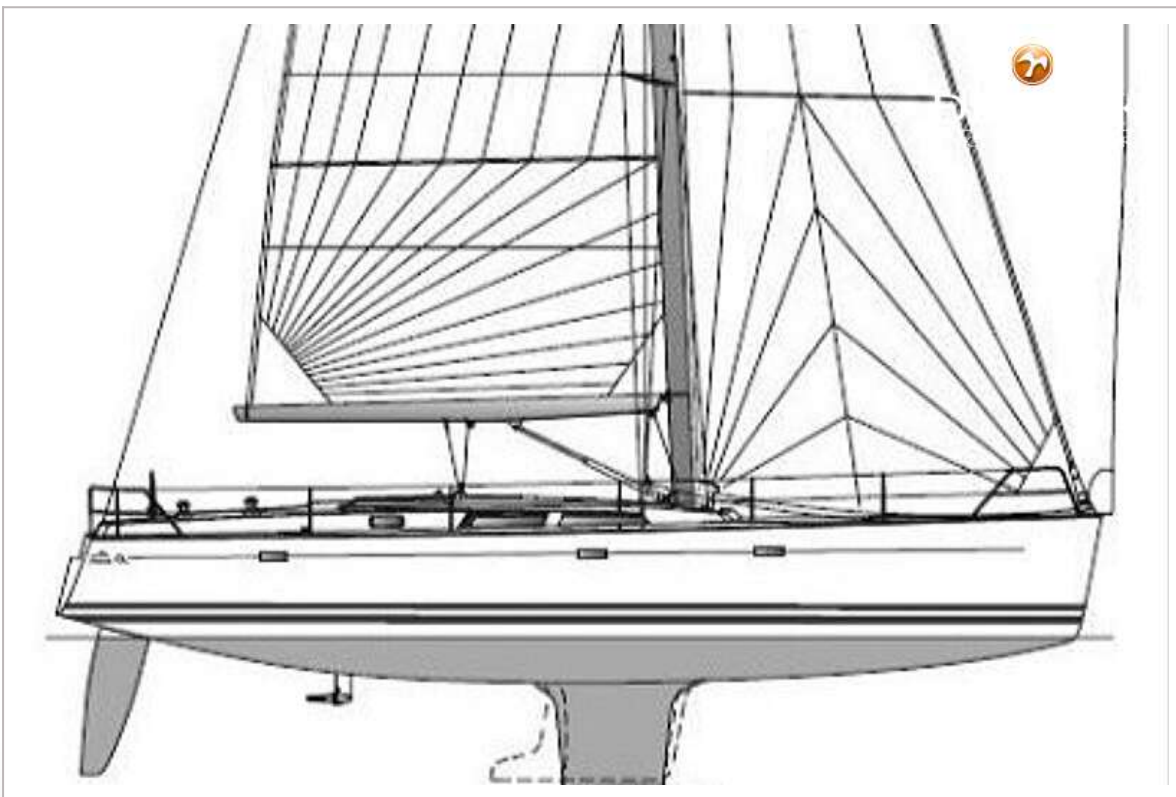
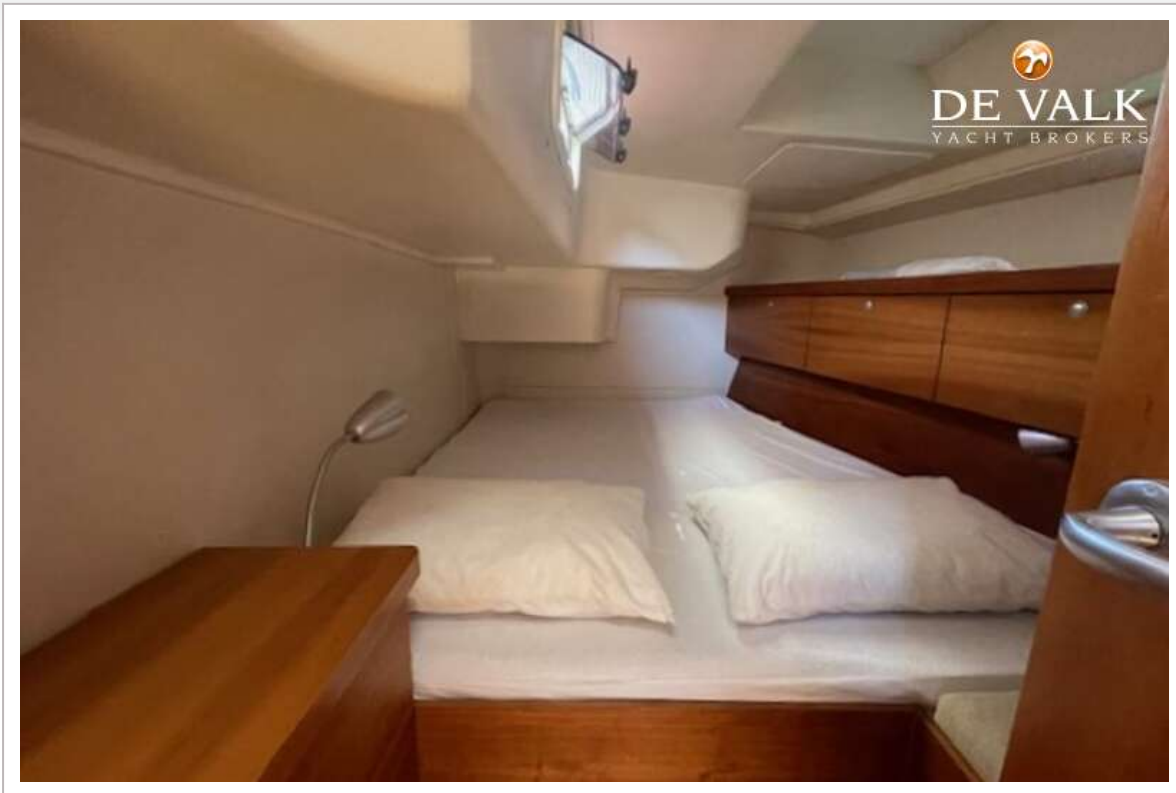
# HANSE 470E



# HANSE 470E

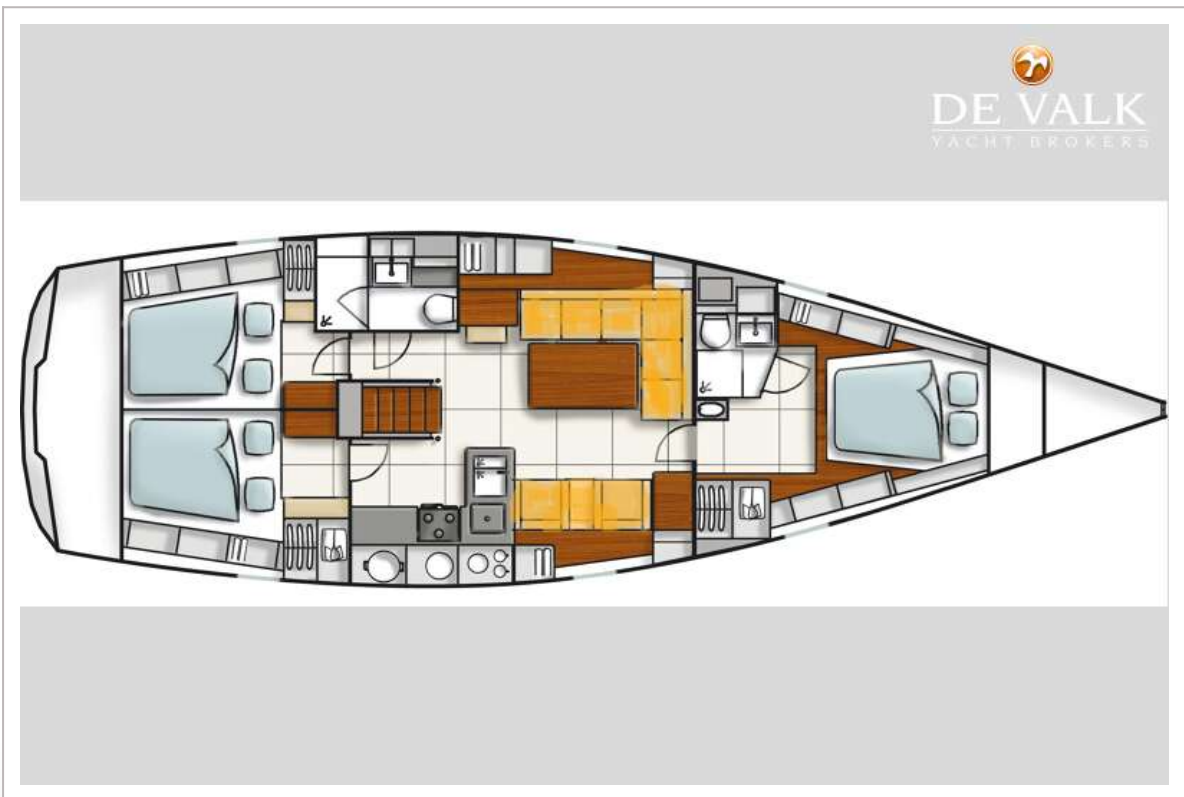
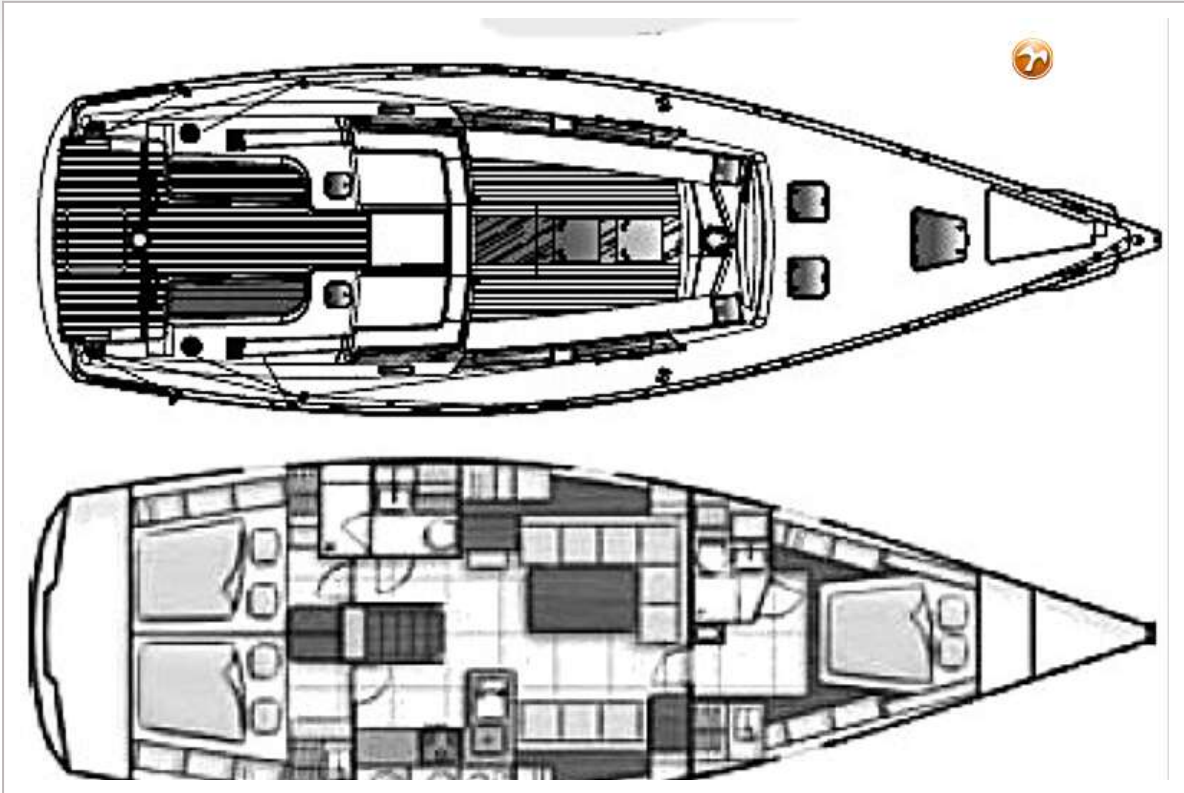


# HANSE 470E





# HANSE 470E



# HANSE 470E

