



BAVARIA 41 EXCLUSIVE



DE VALK  
YACHT BROKERS

## BROKER'S COMMENTS

"TOUCH of Southampton" is a Bavaria 41 Exclusive sailing yacht, 6 birth Owners Version, manufactured in winter 1996 and launched in spring 1997. She is a "one-of-a-kind" because her current and sole owners did not want opening windows in the hull as planned but decided instead for additional cupboards in the galley, an extra book shelf and 6 small cupboards in the master cabin, factory fitted. TOUCH is very well equipped and kept in really good condition. Since 1999 TOUCH has been in Spain and currently moored in lovely Addaya Marina in Menorca. Book your viewing!

*Oliver Stehula*

## SPECIFICATIONS

<b>Dimensions</b>	12.70 x 3.96 x 1.73 (m)	<b>Builder</b>	Bavaria Yachts
<b>Built</b>	1996	<b>Cabins</b>	3
<b>Material</b>	GRP	<b>Berths</b>	6
<b>Engine(s)</b>	1 x Volvo Penta MD2040 40 B diesel	<b>Hp/Kw</b>	40.00 (hp), 29.44 (kw)
<b>Asking price</b>	€ 105.000 (VAT Paid)	<b>Lying</b>	contact Palma

## CONTACT

<b>Sales office</b>	De Valk Palma	<b>Telephone</b>	+34 971 402 911
<b>Address</b>	Port. Cala Nova, Avda. Joan Miro, 327 07015 Palma de Mallorca Spain	<b>E-mail</b>	palma@devalk.nl

## DISCLAIMER

These particulars are given in good faith as supplied but cannot be guaranteed.



## GENERAL

<b>Model</b>	BAVARIA 41 EXCLUSIVE
<b>Type</b>	sailing yacht
<b>LOA (m)</b>	12,70
<b>LWL (m)</b>	10,74
<b>Beam (m)</b>	3,96
<b>Draft (m)</b>	1,73
<b>Headroom (m)</b>	1,95
<b>Year built</b>	1996
<b>Launched</b>	1997
<b>Builder</b>	Bavaria Yachts
<b>Country</b>	Germany
<b>Designer</b>	J&J Design
<b>Displacement (t)</b>	7,9
<b>Ballast (tonnes)</b>	lead 2,8
<b>Hull material</b>	GRP
<b>Hull colour</b>	white
<b>Hull shape</b>	round-bilged
<b>Keel type</b>	bulb keel
<b>Superstructure material</b>	GRP
<b>Deck material</b>	GRP
<b>Deck finish</b>	teak
<b>Cockpit deck finish</b>	teak
<b>Antifouling (year)</b>	2024
<b>Dorades</b>	One
<b>Window frame</b>	aluminium
<b>Window material</b>	polycarbonate
<b>Deckhatch</b>	4 with Cover
<b>Fuel tank (litre)</b>	150
<b>Level indicator (fuel tank)</b>	yes
<b>Freshwater tank (litre)</b>	350



<b>Blackwater tank (litre)</b>	yes
<b>Blackwater tank extraction</b>	pump
<b>Wheel steering</b>	cable steering
<b>Emergency tiller</b>	yes

## ACCOMMODATION

<b>Cabins</b>	3
<b>Berths</b>	6
<b>Interior</b>	mahogany
<b>Saloon</b>	yes
<b>Headroom saloon (m)</b>	1,95
<b>Heating</b>	Eberspächer Hot Air
<b>Chart table</b>	yes
<b>Sink</b>	stainless steel Double Sink
<b>Cooker</b>	Three burner
<b>Oven</b>	yes
<b>Fridge</b>	yes
<b>Freezer</b>	Portable, 12/ 24 Volt with transformer
<b>Hot water system</b>	220V + engine
<b>Water pressure system</b>	electrical
<b>Owners cabin</b>	double bed
<b>Bed length (m)</b>	2,00
<b>Bathroom</b>	en suite
<b>Toilet system</b>	manual
<b>Wash basin</b>	in the bathroom
<b>Shower</b>	en suite
<b>Guest cabin 1</b>	double bed
<b>Bed length (m)</b>	2,00
<b>Wardrobe</b>	hanging/drawers/shelves
<b>Bathroom</b>	shared
<b>Toilet</b>	shared



Toilet system	manual
Wash basin	in the bathroom
Shower	shared
Guest cabin 2	double bed
Bed length (m)	2,00
Wardrobe	hanging/drawers/shelves
Bathroom	shared
Toilet	shared
Toilet system	manual
Wash basin	in the bathroom
Shower	shared

## MACHINERY

No of engines	1
Make	Volvo Penta MD2040
Type	40 B
HP	40
kW	29.44
Fuel	diesel
Year installed	1997
Maximum speed (kn)	7,96
Engine cooling system	freshwater heat exchanger
Drive	sail-drive
Saildrive seal	yes
Engine controls	bowden cable
Gearbox	mechanical MS 25 S
Propeller type	folding One three bladed folding, bronze One fixed as spare
Propeller blades	yes
Manual bilge pump	yes
Electric bilge pump	yes
Bilge alarm	yes



<b>Generator</b>	silent separator Dolphin
<b>Running hours generator</b>	173
<b>Service battery</b>	3x 135 Ah, new in 2022
<b>Generator battery</b>	1x 75Ah
<b>Battery charger/inverter</b>	Two charger
<b>Shorepower</b>	with cable
<b>Watermaker</b>	Sea- Fresh H2O, 72l/h

## NAVIGATION

<b>Compass</b>	Plastimo Olympic 115
<b>Depth sounder</b>	Autohelm St 50
<b>Log</b>	Autohelm St 50
<b>Windset</b>	Raymarine i60
<b>VHF</b>	Shore Line Compact WR
<b>Autopilot</b>	Autohelm St 7000
<b>Radar</b>	yes
<b>GPS</b>	Autohelm St50
<b>Radar/GPS/plotter</b>	Raymarine eS97
<b>EPIRB</b>	ACR Global Fix RLB-35
<b>Personal MOB transmitter</b>	Sea Marshall Personal Beacon
<b>Navigation lights</b>	LOPO Lights, LED

## EQUIPMENT

<b>Sprayhood</b>	yes
<b>Bimini</b>	yes
<b>Winter cover</b>	New in 2020
<b>Window cover</b>	yes
<b>Cockpit cushions</b>	yes
<b>Cockpit table</b>	yes
<b>Boarding ladder</b>	yes
<b>Deck shower</b>	On the stern, hot and cold water



<b>Anchor</b>	CQR Plough 22kg
<b>Anchor chain</b>	50m x 10mm
<b>Anchor 2</b>	High Tensile Danforth
<b>Anchor chain</b>	Chain and 100 m rope
<b>Windlass</b>	Lewmar 1000 Watt
<b>Dinghy</b>	inflatable Large Avon in good condition.
<b>Outboard</b>	Yamaha 2 Stroke, 8HP
<b>Outboard support</b>	yes
<b>Deck crane</b>	For outboard engine
<b>Life raft (pers)</b>	NEW! Ocean Safety ISO, 6 person Valise 2025. Value: €3500
<b>Lifejackets</b>	6
<b>Safety harness</b>	4
<b>Safety lines on deck</b>	yes
<b>Window ventilator</b>	yes
<b>Fenders</b>	yes
<b>DVD player</b>	Sony CDX- 51 with 10x Changer
<b>Cockpit speakers</b>	yes
<b>Extra info</b>	One- Spot Water Softener, No Calcium in water system.

## RIGGING

<b>Rigging</b>	fractional with backstays
<b>Standing rigging</b>	wire
<b>Brand mast</b>	Seldén
<b>Material mast</b>	aluminium
<b>Spreaders</b>	Two Pairs
<b>Mainsail cover</b>	yes
<b>Battcars</b>	yes
<b>Fully battened mainsail</b>	1x Hydronet like new, 1x Dacron, used
<b>Genoa</b>	One new, Mylar/ Dacron with cover One used
<b>Genoa III</b>	Dacron
<b>Genoa furler</b>	Furlex



<b>Genoa cover</b>	yes
<b>Spinnaker</b>	yes
<b>Removable innerforestay</b>	yes
<b>Stormjib</b>	Dacron
<b>Reefing System</b>	Single- Line- System
<b>Backstay adjuster</b>	tackle
<b>Boomvang</b>	mechanical and tackle
<b>Primary sheet winch</b>	Harken St 40
<b>Secondary sheet winch</b>	Harken St 40
<b>Genoa sheetwinches</b>	Two Harken St 48
<b>Halyard winches</b>	Two Harken St 40
<b>Spi-pole</b>	aluminium





# BAVARIA 41 EXCLUSIVE



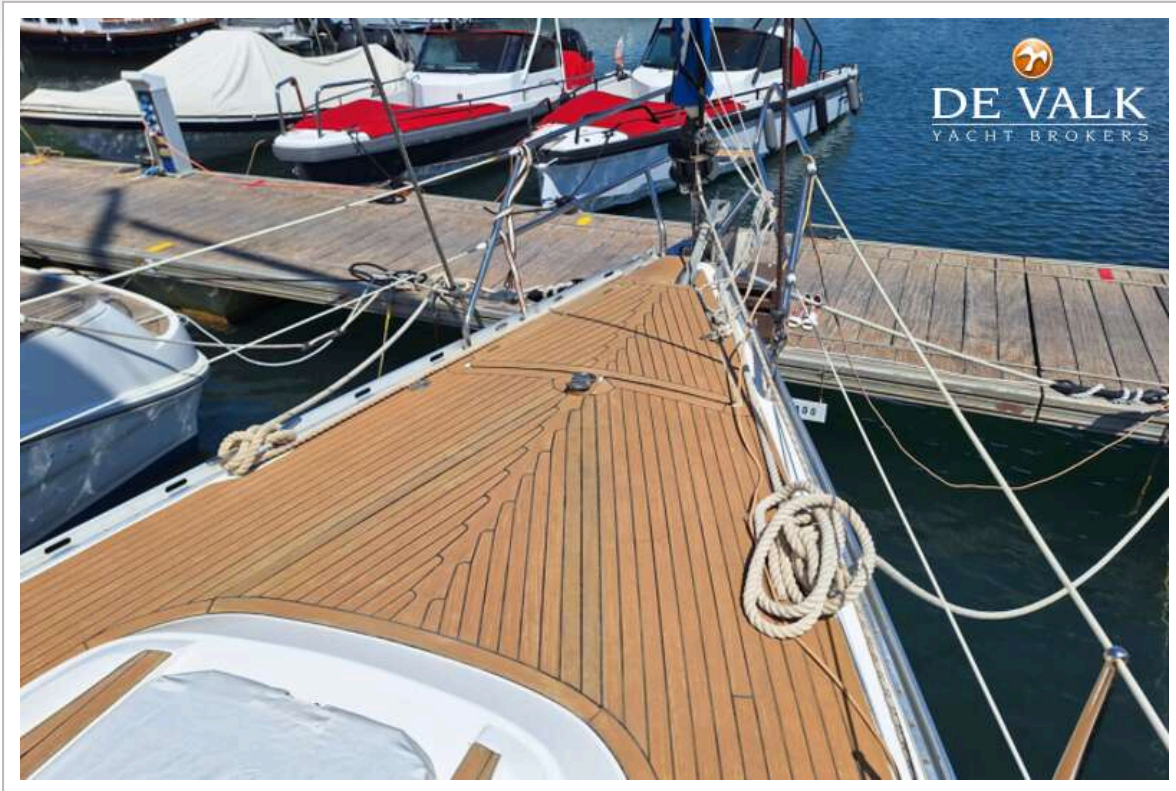


# BAVARIA 41 EXCLUSIVE



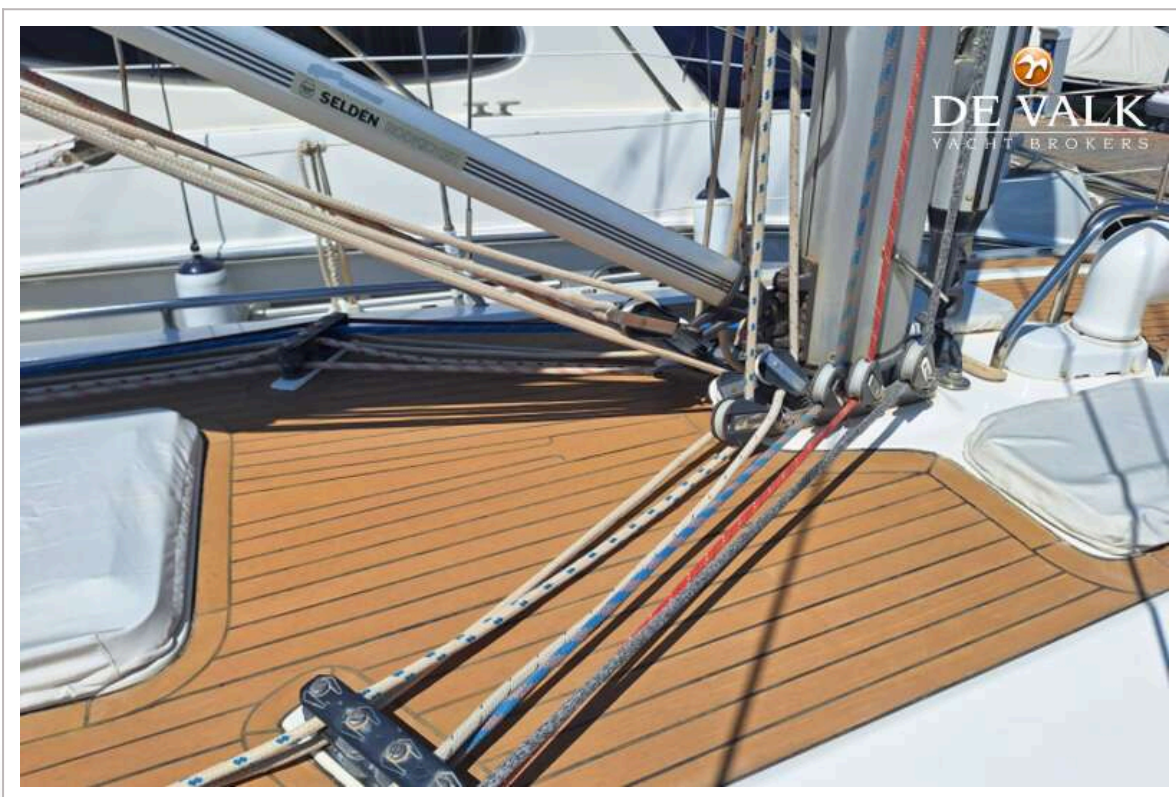


# BAVARIA 41 EXCLUSIVE



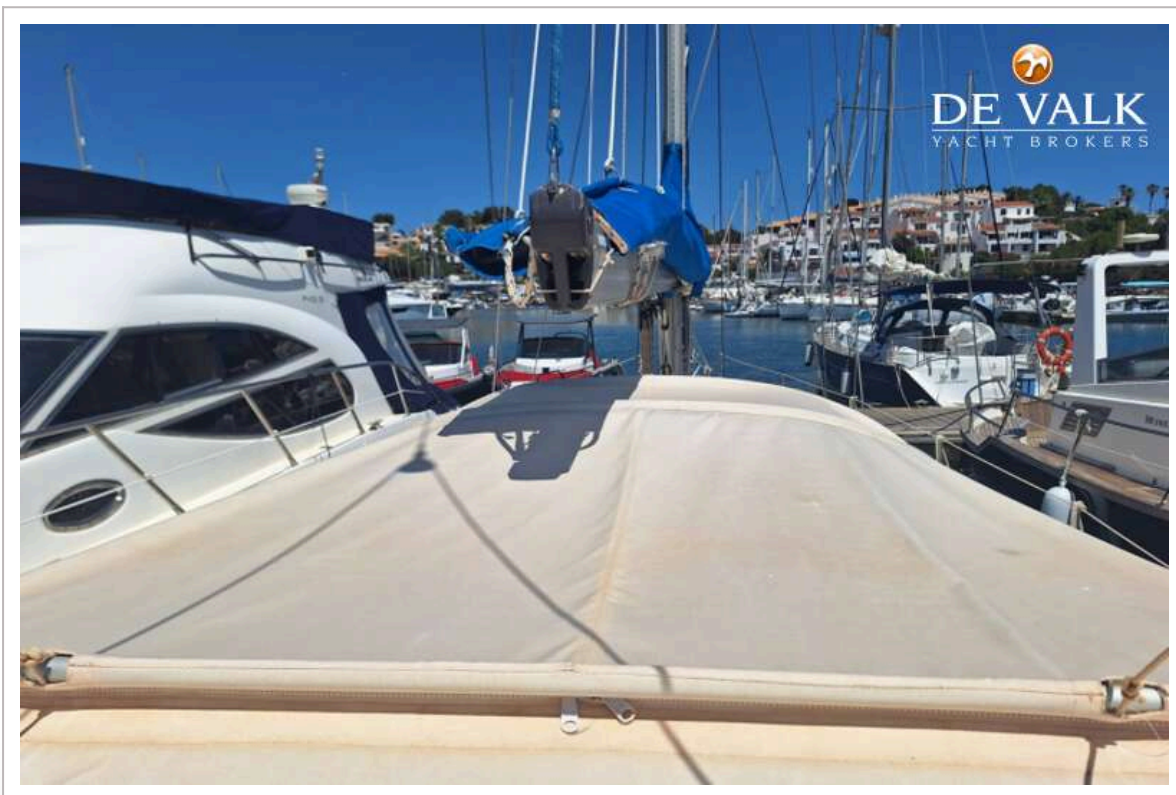


# BAVARIA 41 EXCLUSIVE





# BAVARIA 41 EXCLUSIVE



# BAVARIA 41 EXCLUSIVE

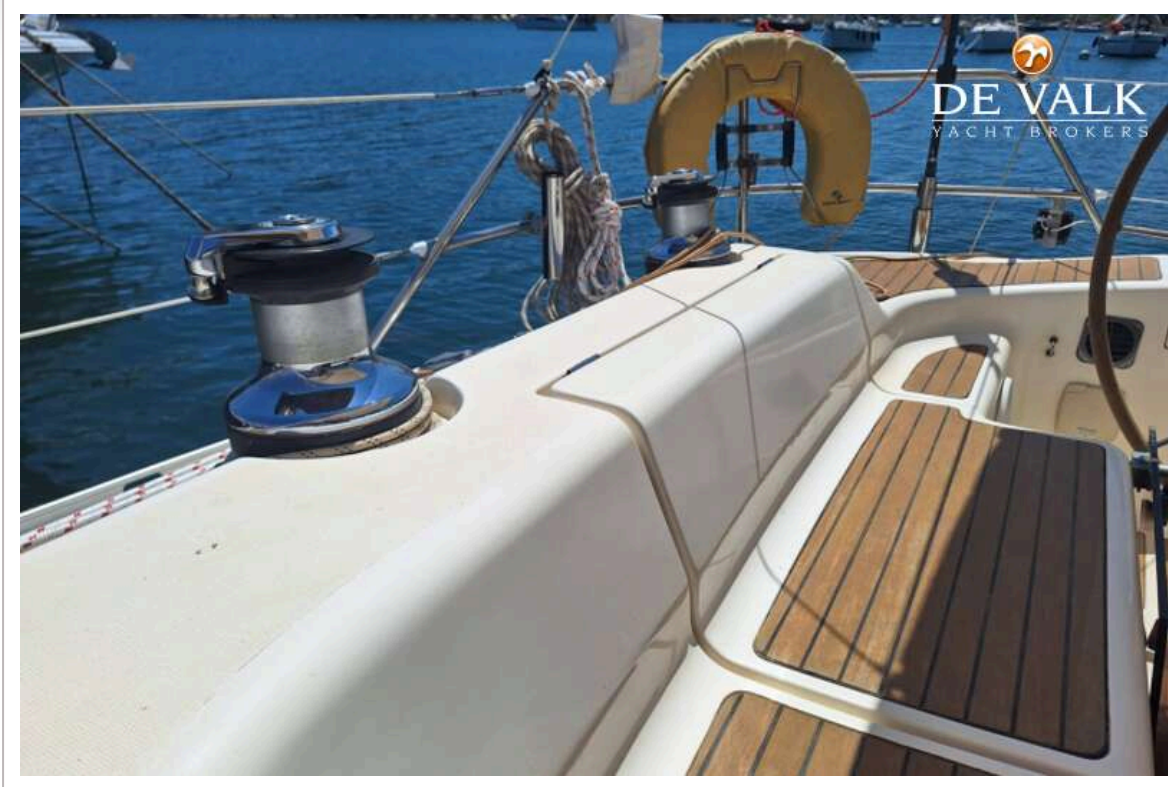




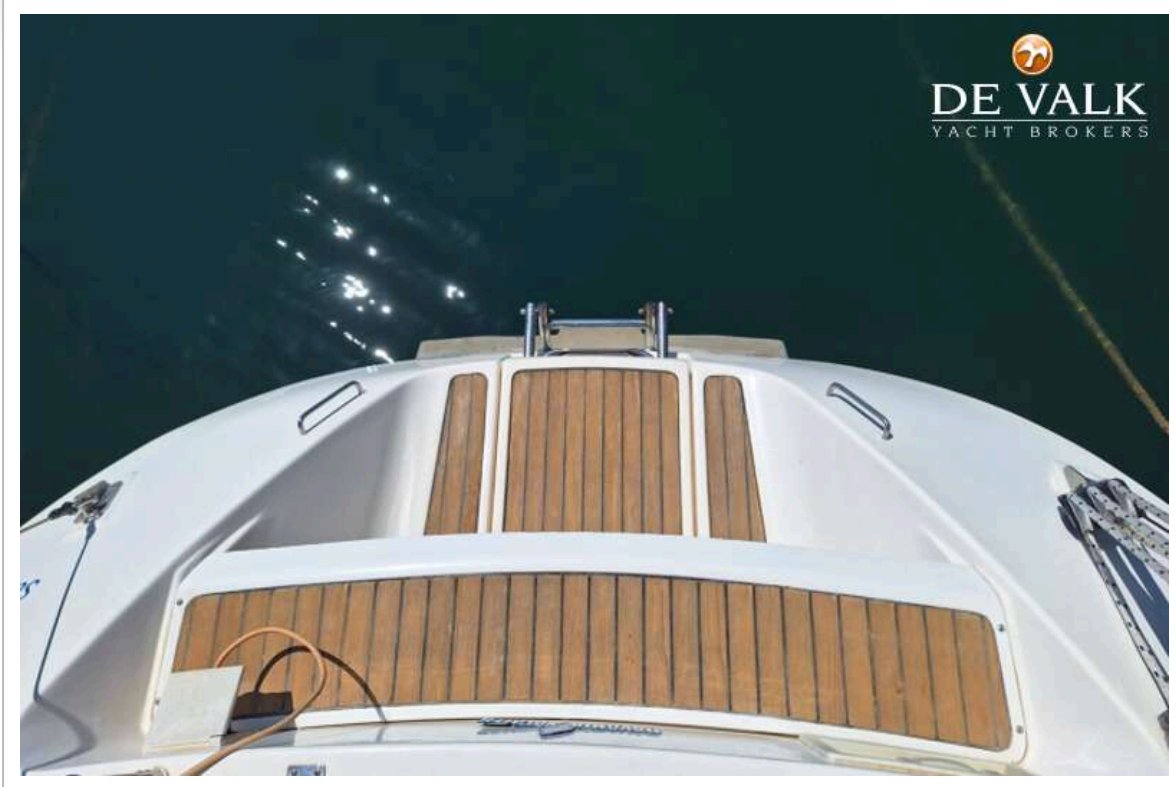
# BAVARIA 41 EXCLUSIVE



# BAVARIA 41 EXCLUSIVE





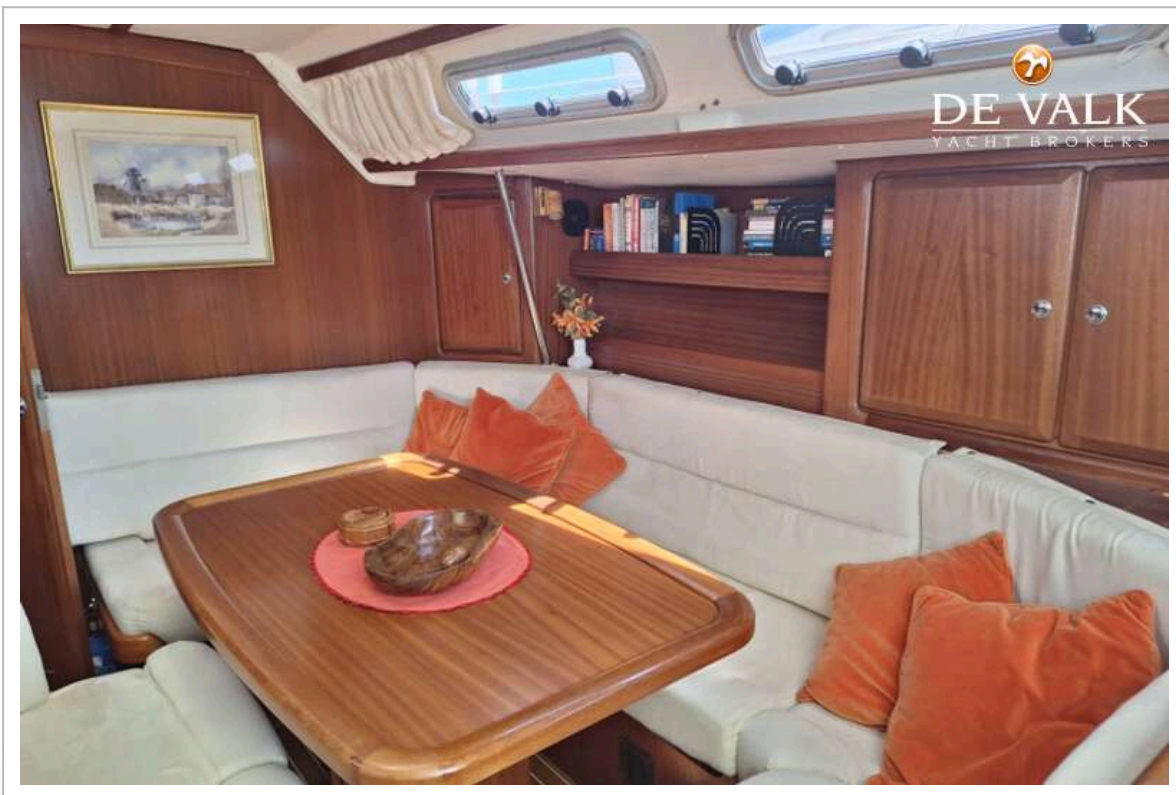


# BAVARIA 41 EXCLUSIVE

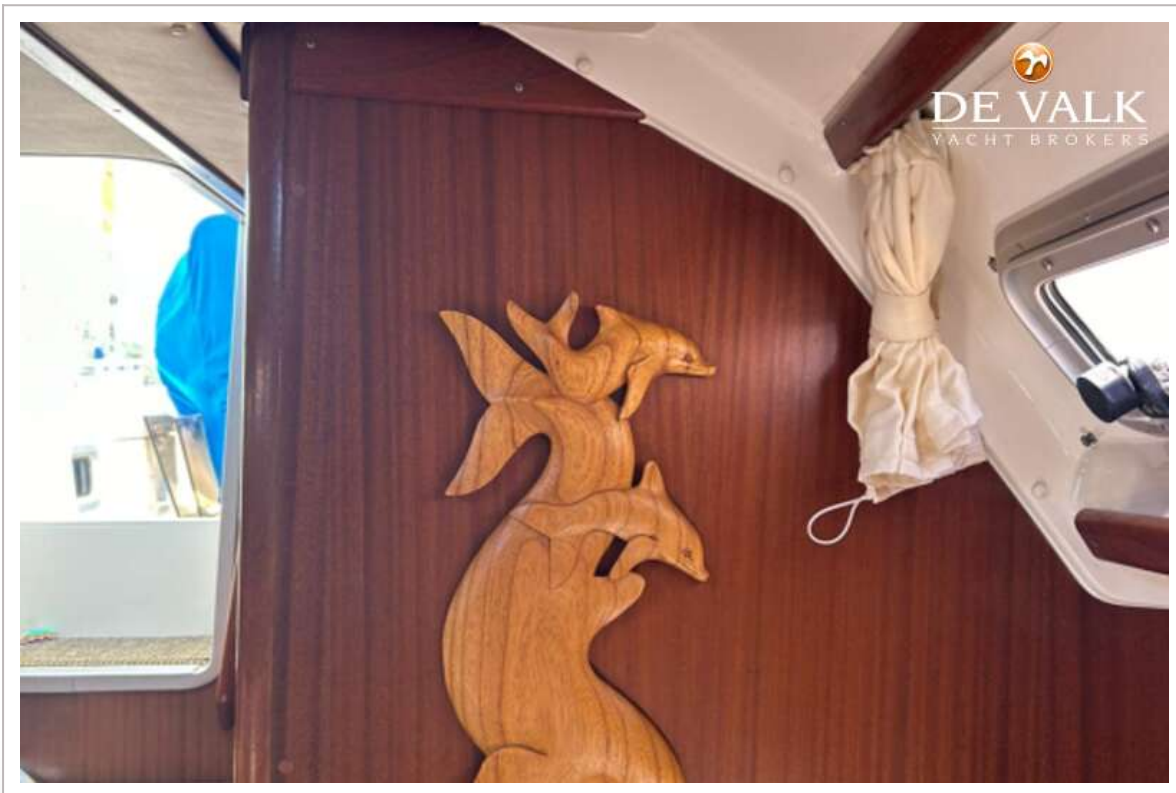
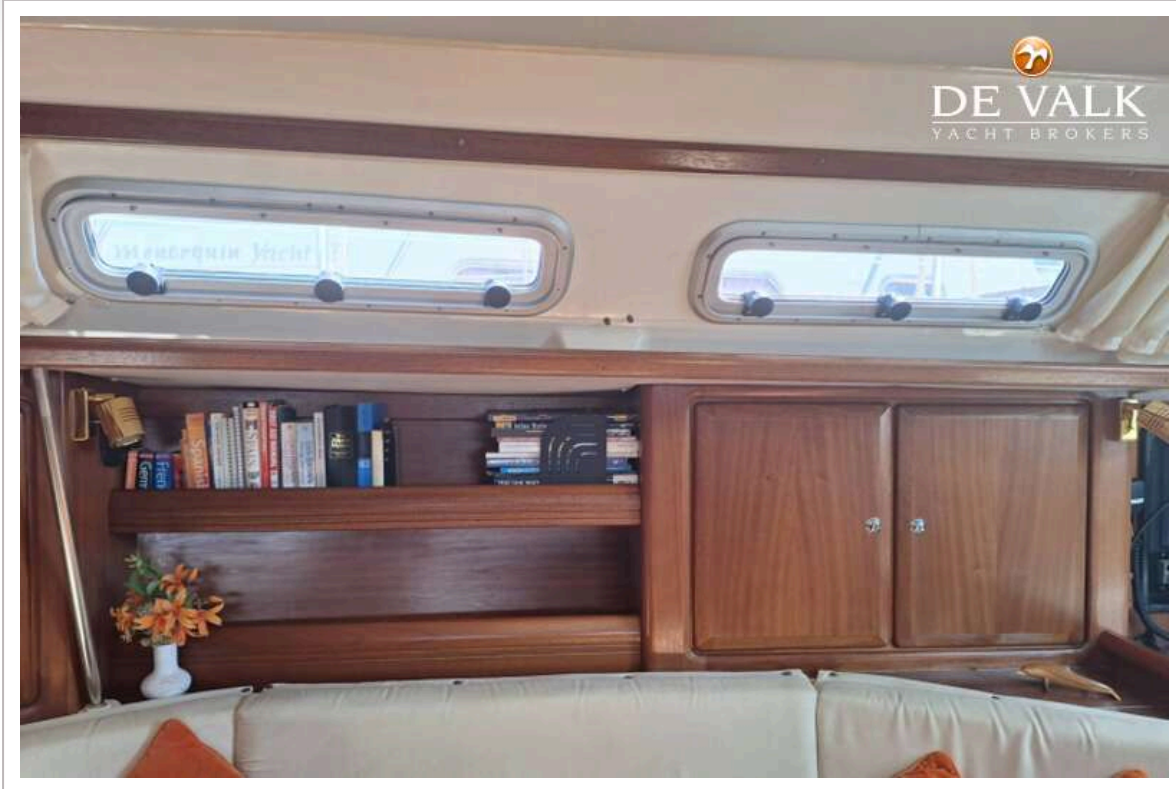




# BAVARIA 41 EXCLUSIVE

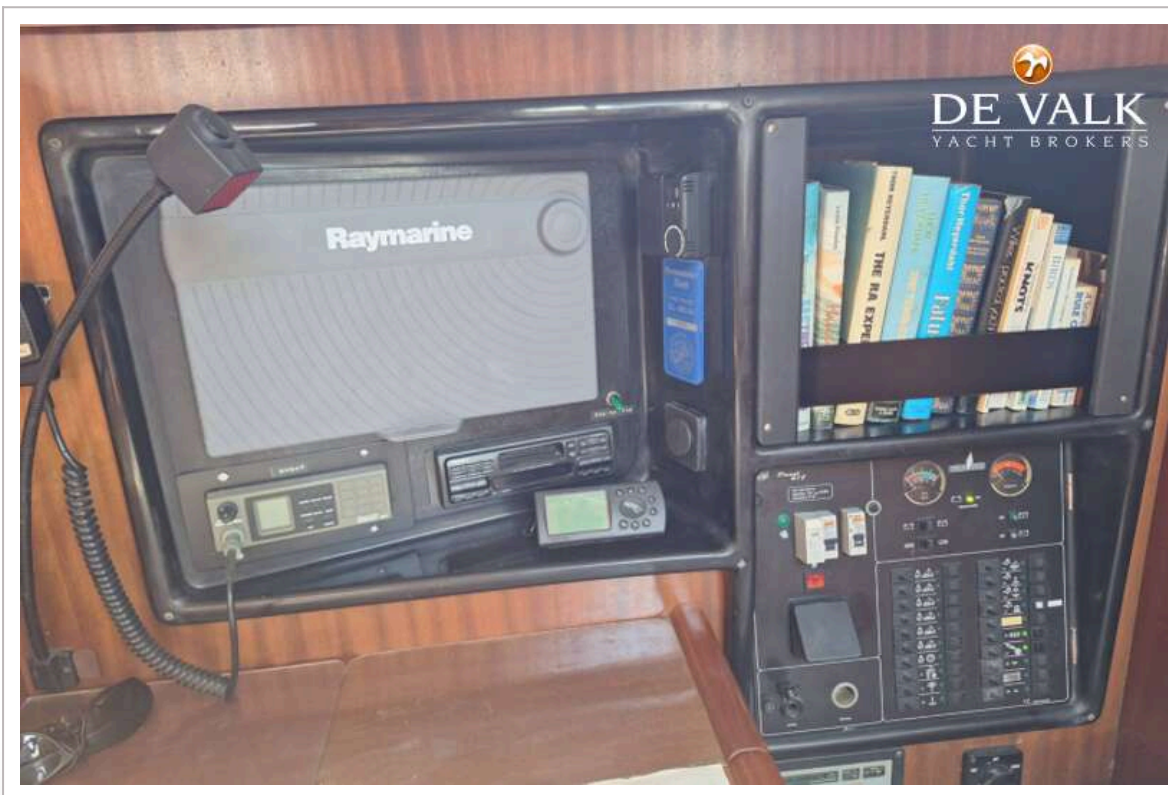


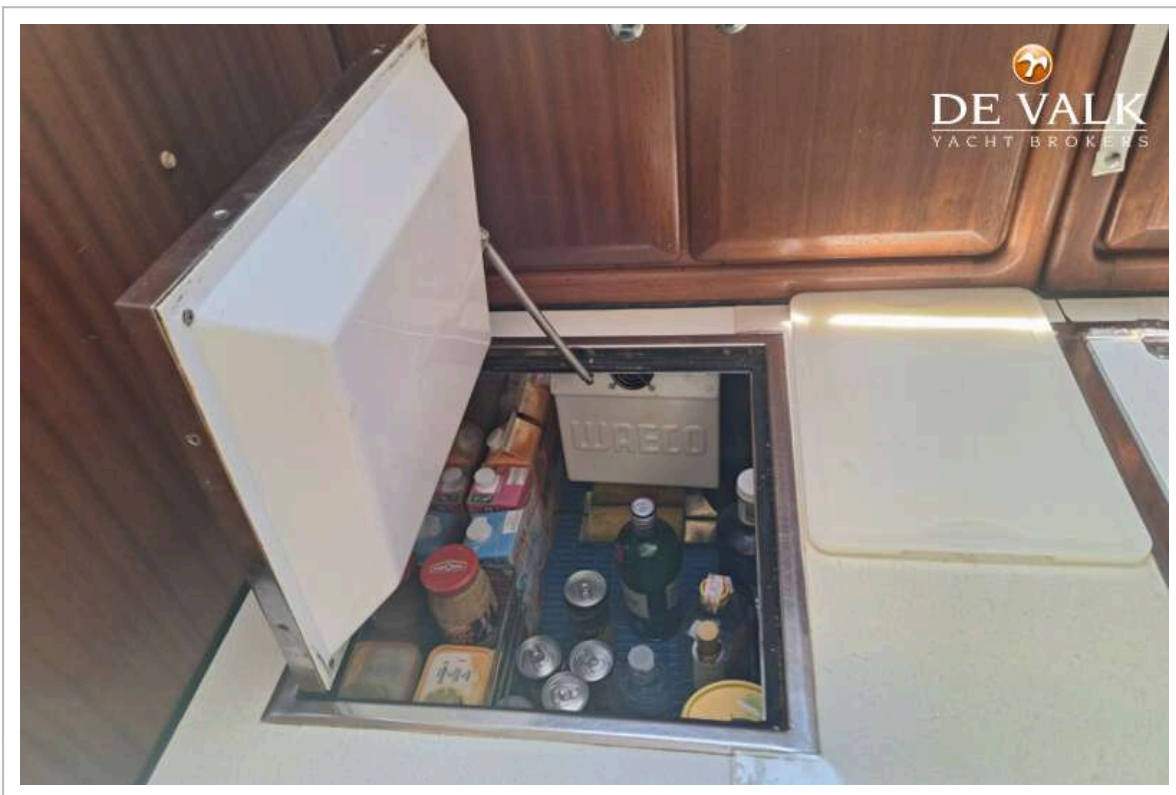
# BAVARIA 41 EXCLUSIVE





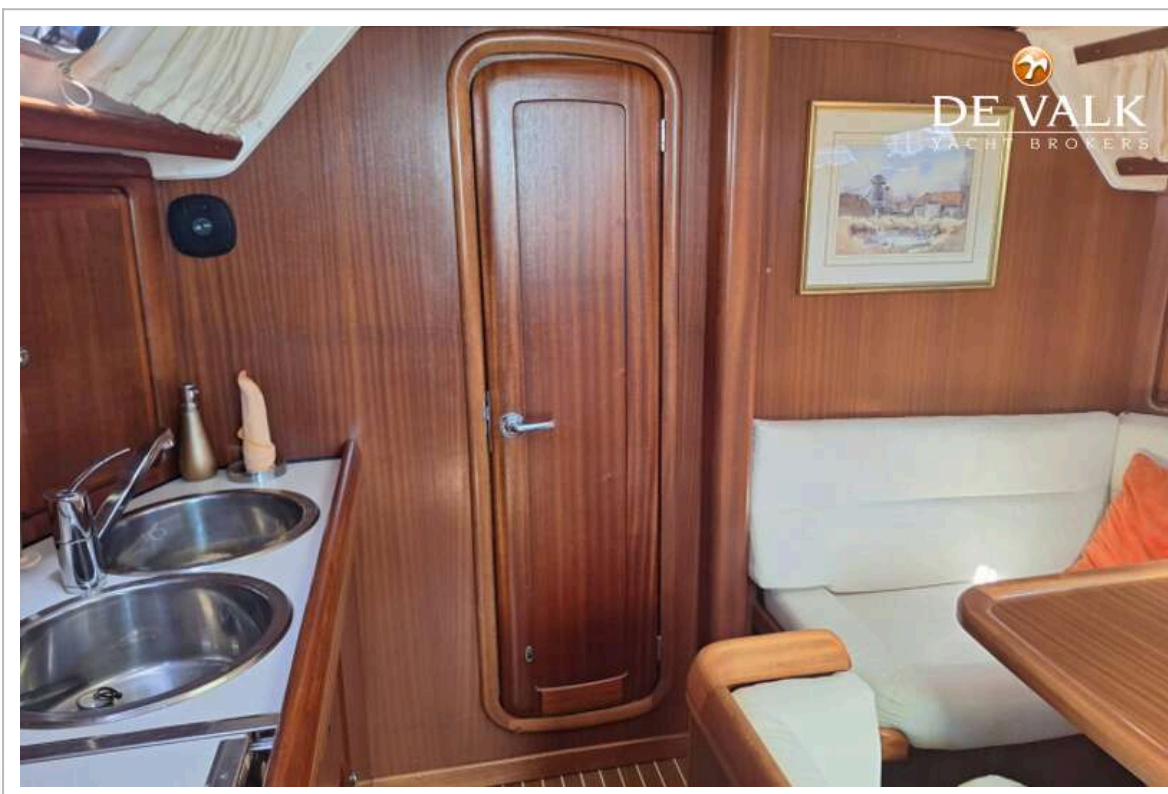
# BAVARIA 41 EXCLUSIVE



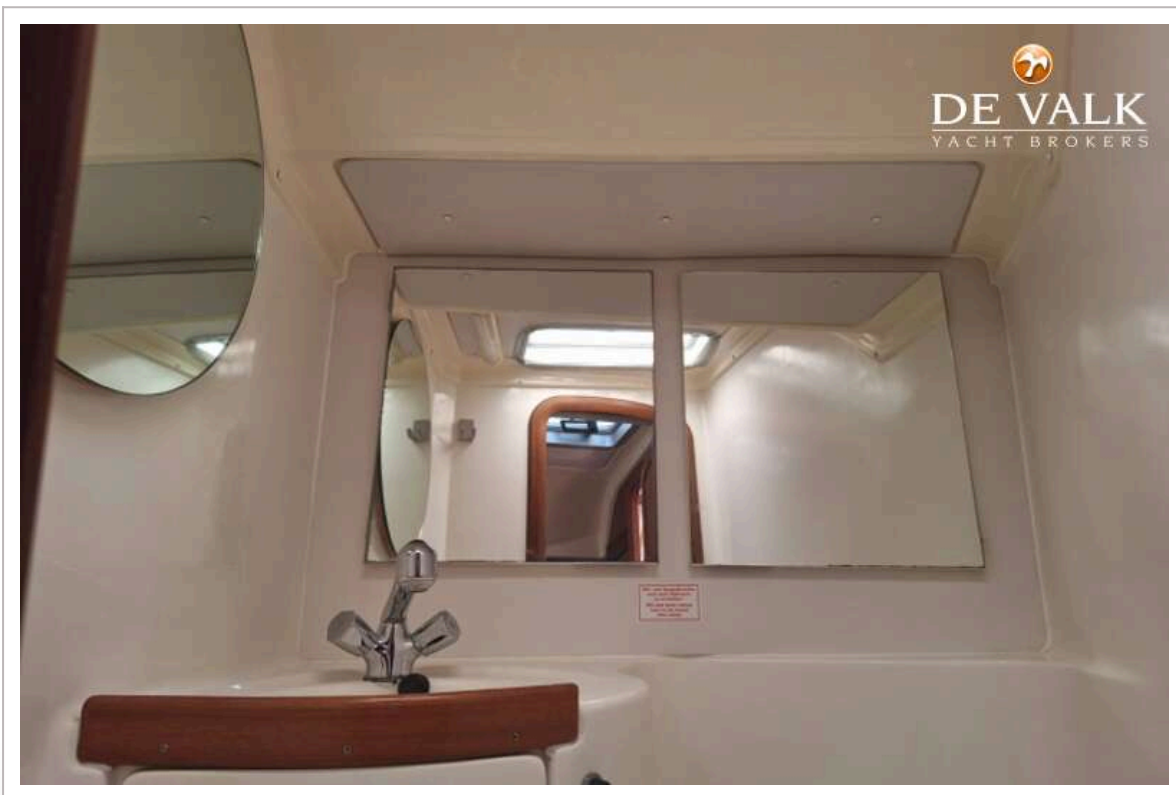
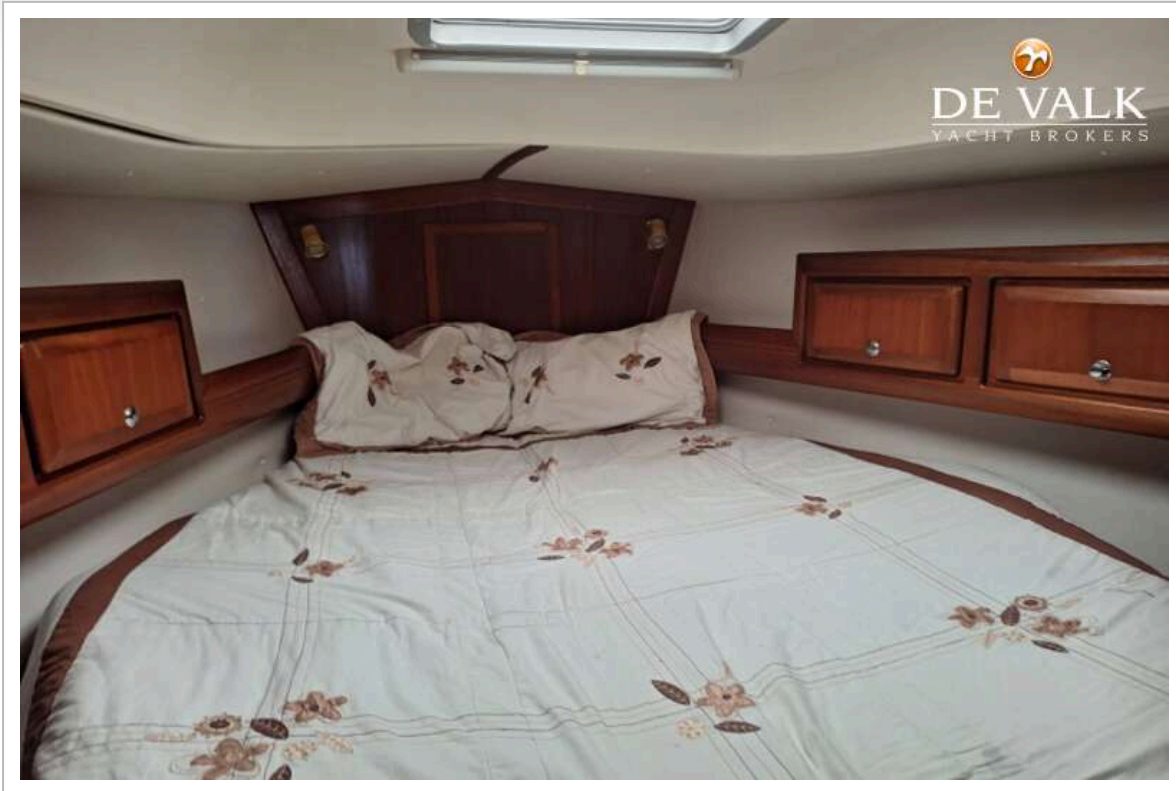




# BAVARIA 41 EXCLUSIVE

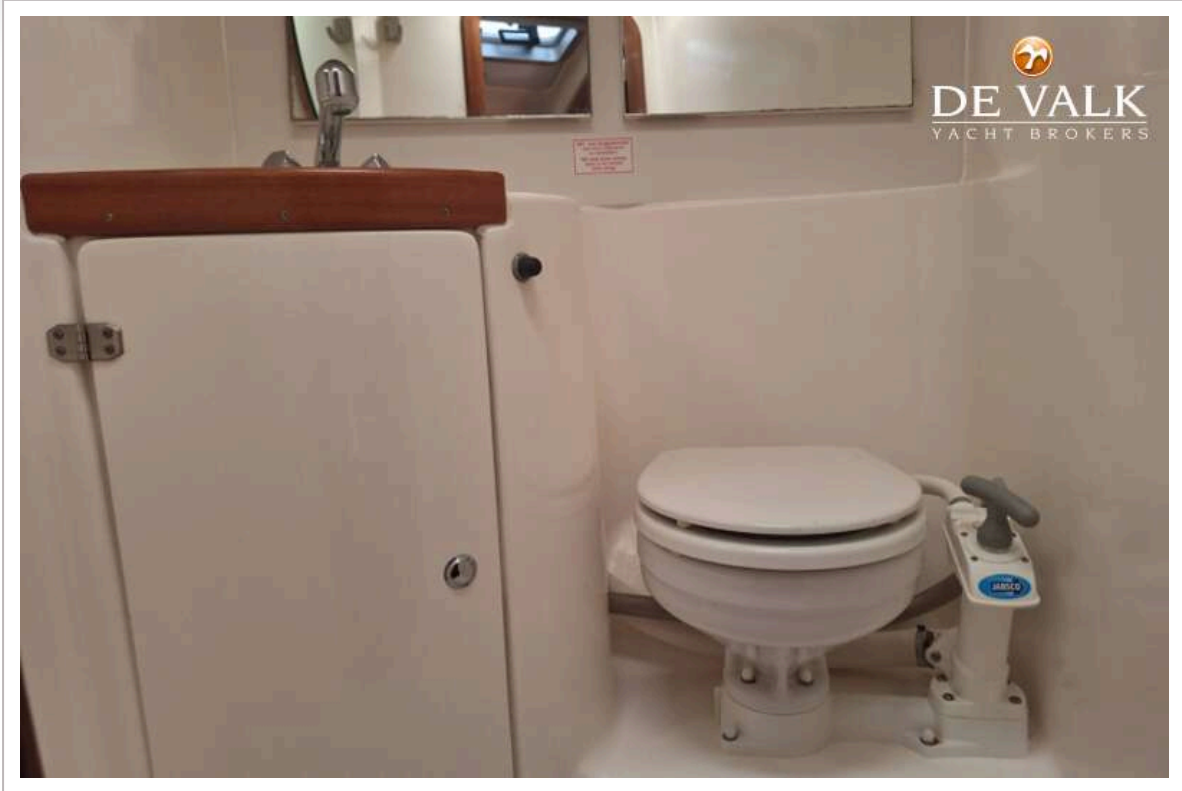


# BAVARIA 41 EXCLUSIVE

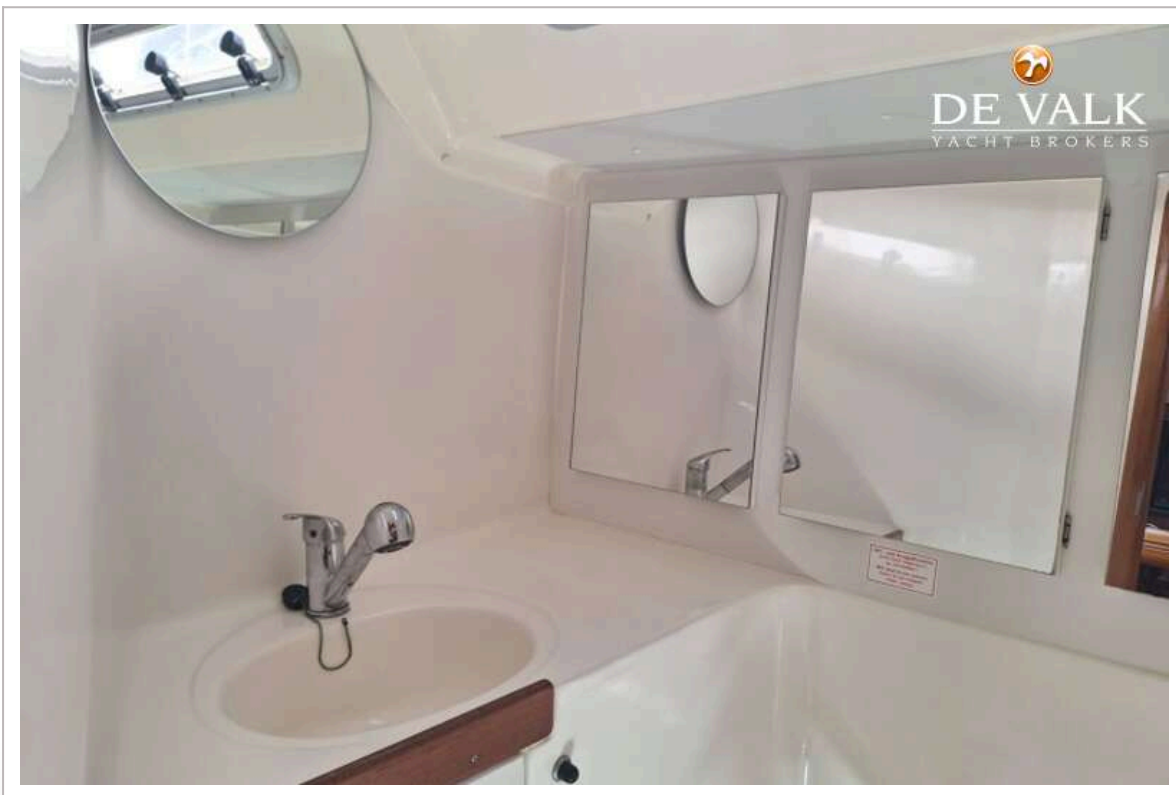




# BAVARIA 41 EXCLUSIVE



# BAVARIA 41 EXCLUSIVE



# BAVARIA 41 EXCLUSIVE

