



DE VALK
YACHT BROKERS



EAGLE 38



DE VALK
YACHT BROKERS

BROKER'S COMMENTS

Elevating Sailing to New Heights. Crafted with precision and timeless elegance. The Eagle 38 was designed in close cooperation with Hoek design, one of the world's leading yacht designers. This 38 foot sailboat embodies the Spirit of Tradition while comprising state-of-the-art technology for exceptional comfort and unrivaled performance. Explore the world of the Eagle 38 Daysailer and let your passion for sailing soar to new heights. Sail with grace. Experience the Eagle 38 Daysailer.

Hans Visser

SPECIFICATIONS

Dimensions	11.77 x 2.60 x 1.25 (m)	Builder	Leonardo Yachts
Built	2019	Cabins	
Material	Vinylester	Berths	3
Engine(s)	1 x Volvo D1-13 diesel	Hp/Kw	12.00 (hp), 8.83 (kw)
Asking price	sold (VAT)	Lying	at sales office

CONTACT

Sales office	De Valk Hindeloopen	Telephone	+31 514 52 40 00
Address	Oosterstrand 1 8713 JS Hindeloopen The Netherlands	E-mail	hindeloopen@devalk.nl

DISCLAIMER

These particulars are given in good faith as supplied but cannot be guaranteed.



GENERAL

Model	EAGLE 38
Type	sailing yacht
LOA (m)	11,77
Beam (m)	2,60
Draft (m)	1,25
Air draft (m)	13,80
Year built	2019
Launched	2021
Builder	Leonardo Yachts
Country	The Netherlands
Designer	Hoek Design
Displacement (t)	3,8
Ballast (tonnes)	1350 kg
CE norm	C
Hull material	vinylester
Hull colour	blue Ral 5008
Hull shape	round-bilged
Keel type	fin keel
Deck material	GRP
Deck finish	teak
Superstructure deck finish	teak
Cockpit deck finish	teak
Deckhatch	Lewmar flush
Fuel tank (litre)	polyethylene 40 ltr.
Freshwater tank (litre)	polyethylene 40 ltr.
Blackwater tank (litre)	polyethylene 30 ltr.
Blackwater tank extraction	deck extraction + pump
Wheel steering	cable steering
Emergency tiller	yes



ACCOMMODATION

Berths	3
Interior	Mahogany matt varnished
Floor	teak and holly
Open cockpit	yes
Fridge	Vitrifrigo
Hot water system	220V + engine 20 ltr.
Water pressure system	electrical
Toilet	Vetus
Toilet system	electric
Wash basin	Stainless steel

MACHINERY

No of engines	1
Make	Volvo
Type	D1-13
HP	12
kW	8.83
Fuel	diesel
Year installed	2019
Maximum speed (kn)	7
Cruising speed (kn)	6
Consumption (l/hr)	1
Engine hours	45
Engine cooling system	freshwater heat exchanger
Drive	sail-drive
Saildrive seal	yes
Engine controls	manual
Gearbox	mechanical
Bowthruster	electric Jet- Thruster 24V
Exhaust	dry



Propeller type	folding
Propeller blades	2
Manual bilge pump	1 x
Electric bilge pump	2 x
Electrical installation	12 Volt
Service battery	1 x Banner 200Ah
Bowthruster battery	2x Optima 75Ah 24 volt
Battery charger	Mastervolt Mac Plus 12V & Mastervolt DC-DC for 24 V thruster battery
Battery charger/inverter	Mastervolt Mac Plus 12V
Shorepower	with cable

NAVIGATION

Compass	Ritchie
Depth sounder	Data from: 2x Raymarine i70
Log	Data from: 2x Raymarine i70
Windset	Data from: 2x Raymarine i70
GPS	Data from: 2x Raymarine i70
Navigation lights	yes

EQUIPMENT

Cockpit cover	For the summer
Winter cover	For the full boat
Cockpit cushions	Sunbrella set for cockpit
Boarding ladder	stainless steel Plus additional assistance ladder
Deck shower	Hot & cold water
Fenders	4 fenders plus 1 Ball
Mooring lines	yes
Radio-cd player	Waterproof with bluetooth
Cockpit speakers	yes
Fire extinguisher	yes



Extinguisher in engine room	yes
Extra info	Lifeline, boathook & paddle, flagpole

RIGGING

Rigging	sloop
Standing rigging	Dyform
Brand mast	Seldén
Material mast	aluminium white painted in Ral 9001
Spreaders	Two sets of swept aft spreaders
Mainsail cover	yes
Fully battened mainsail	North sails NPC Cross-Cut 33.4m ² Lazy Jack system
Genoa	North sails NPC Cross-Cut 26.4m ²
Genoa furler	Flush mounted Furlex
Genoa cover	yes
Gennaker	Orange with chute 79,46m ² Molenaar sails
Reefing System	quick-one-line-reefing
Backstay adjuster	mechanical
Boomvang	gasspring
Primary sheet winch	2 self tailing Harken 40 series radial black
Genoa sheetwinches	2 self tailing Harken 40 series radial black
Halyard winches	2 self tailing Harken 35 series radial black



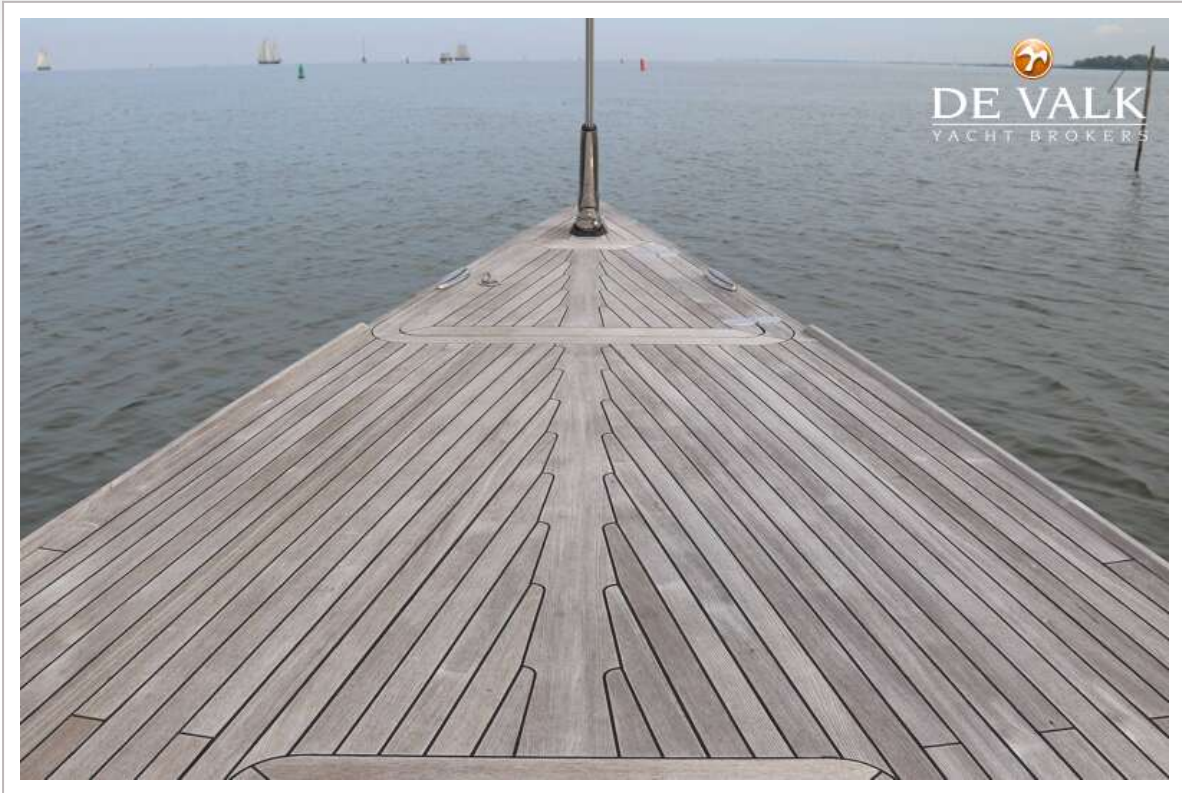
EAGLE 38



EAGLE 38



EAGLE 38



EAGLE 38



EAGLE 38



EAGLE 38



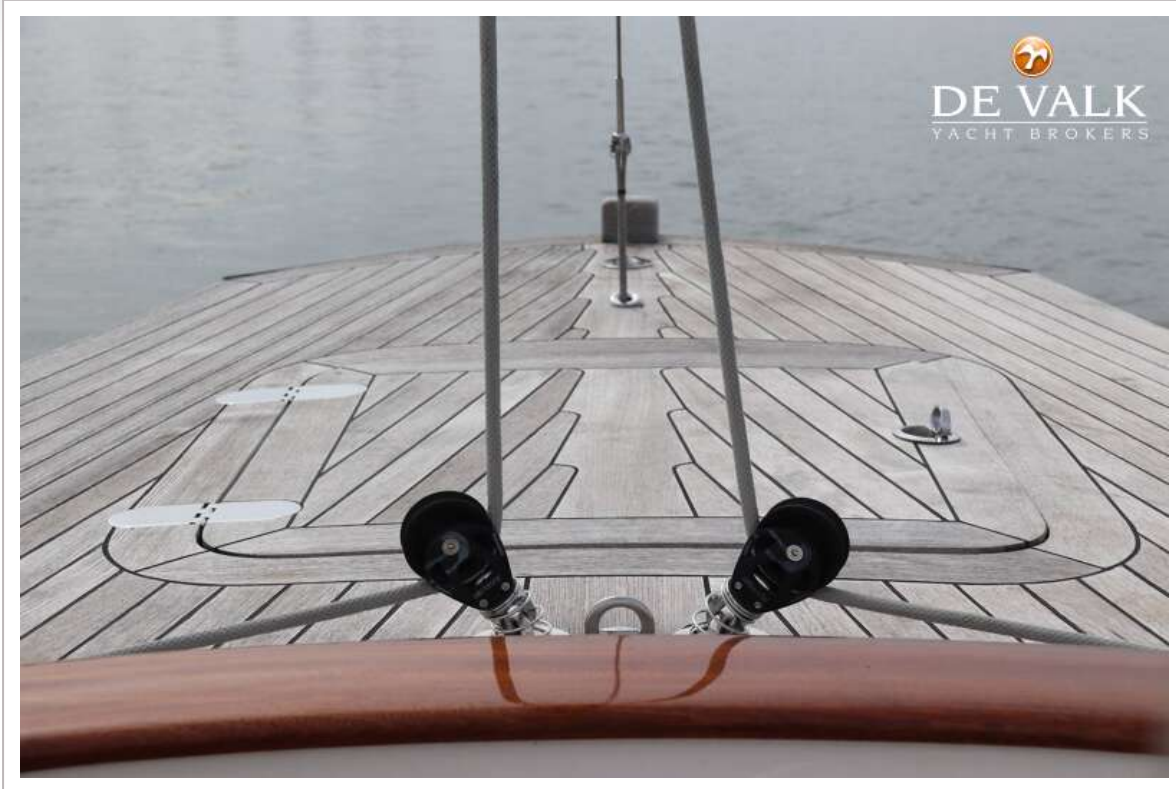
EAGLE 38



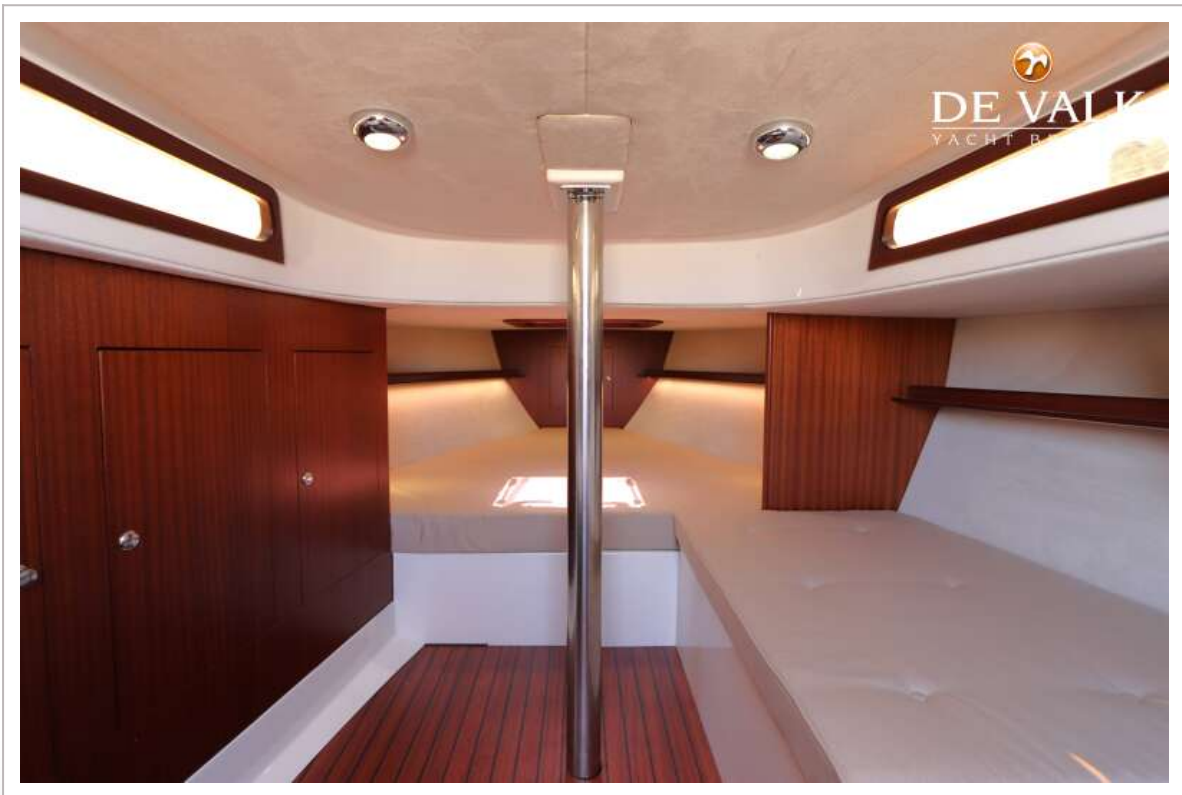
EAGLE 38



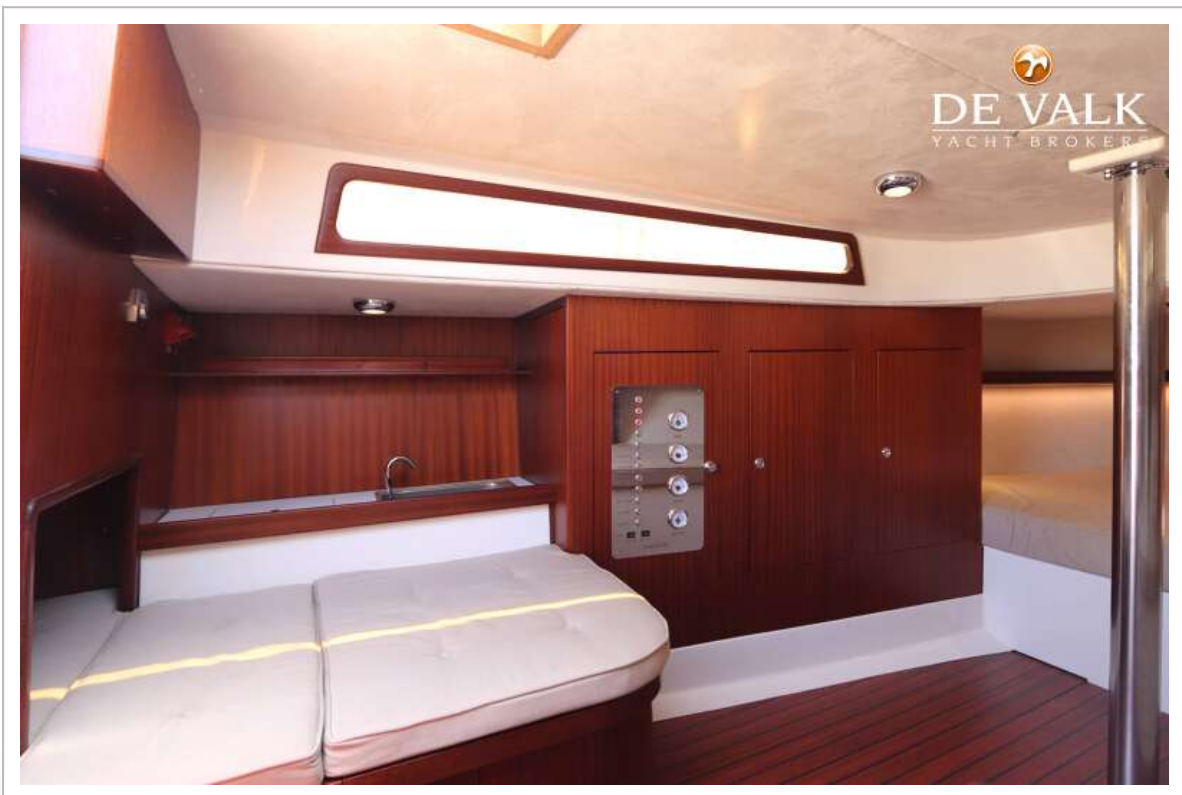
EAGLE 38



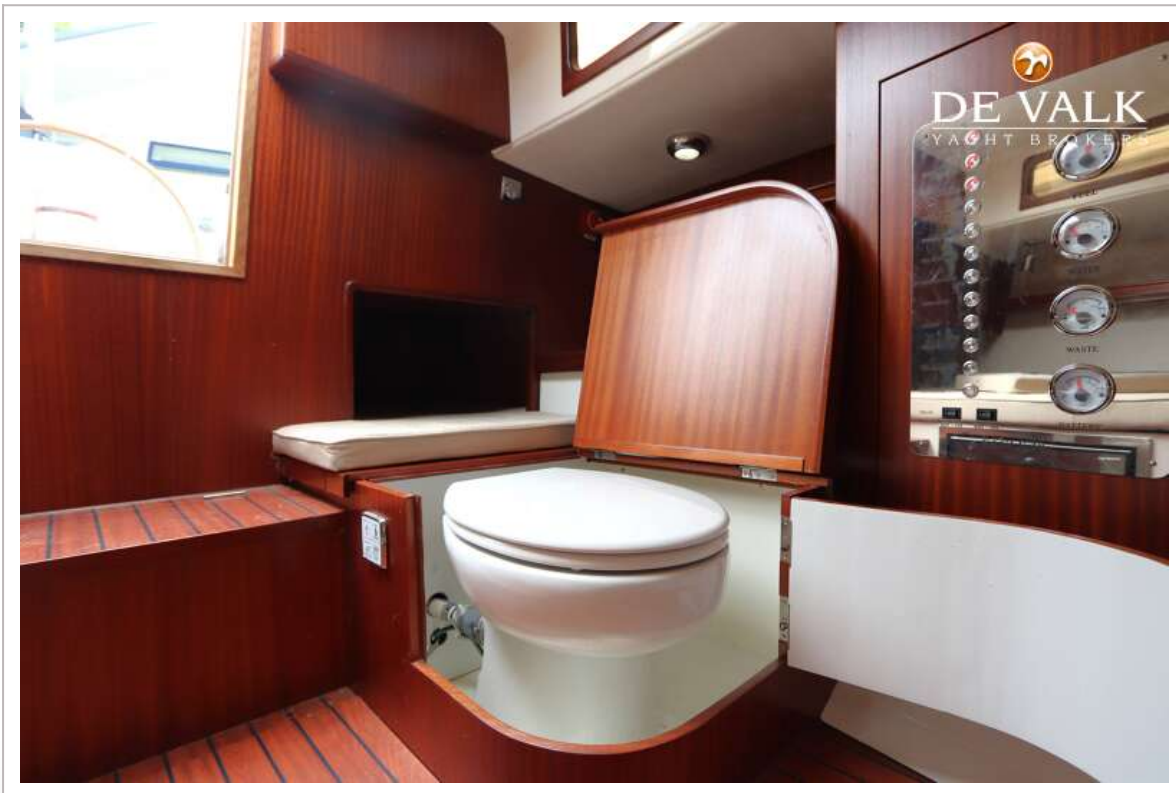
EAGLE 38



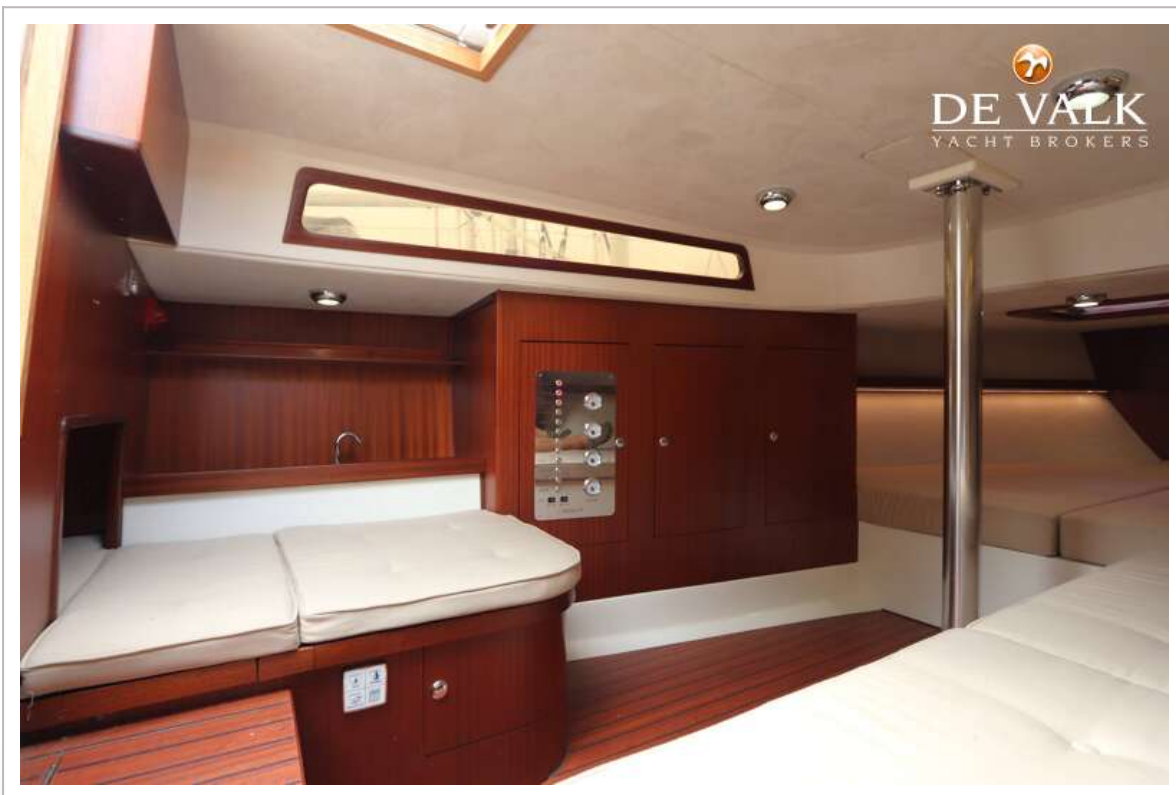
EAGLE 38



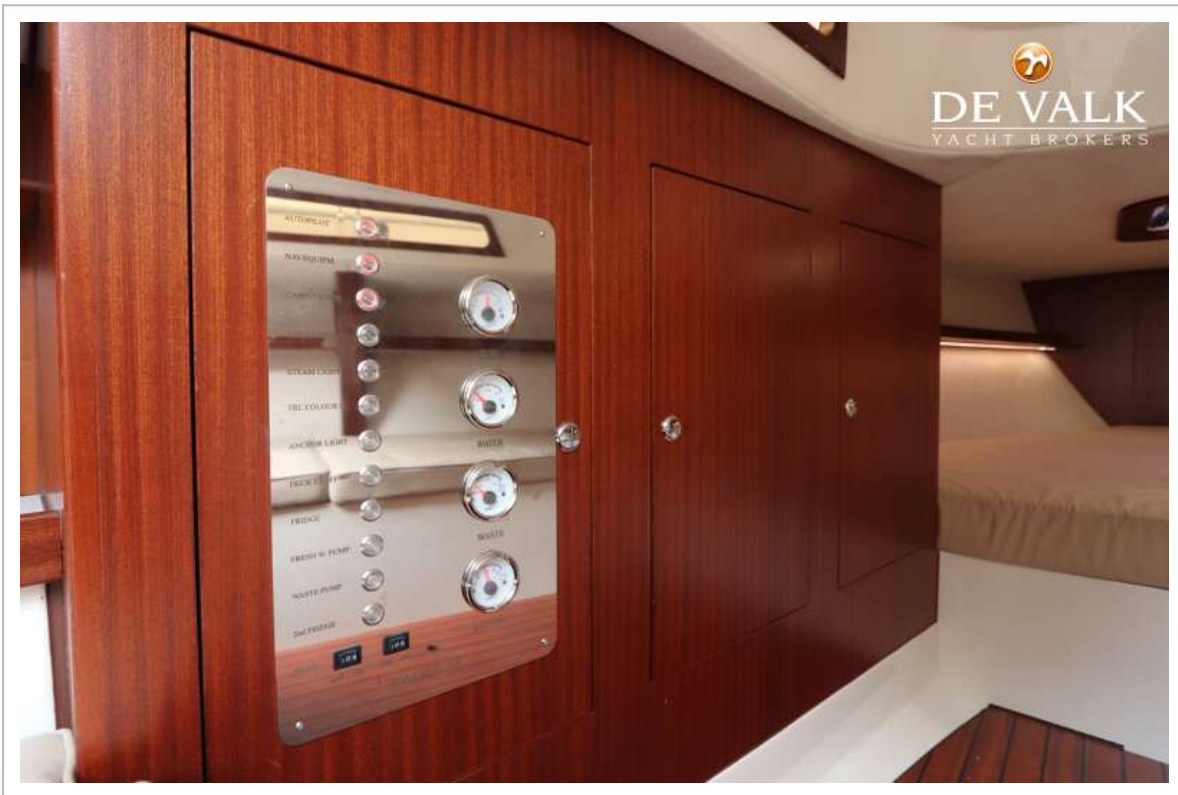
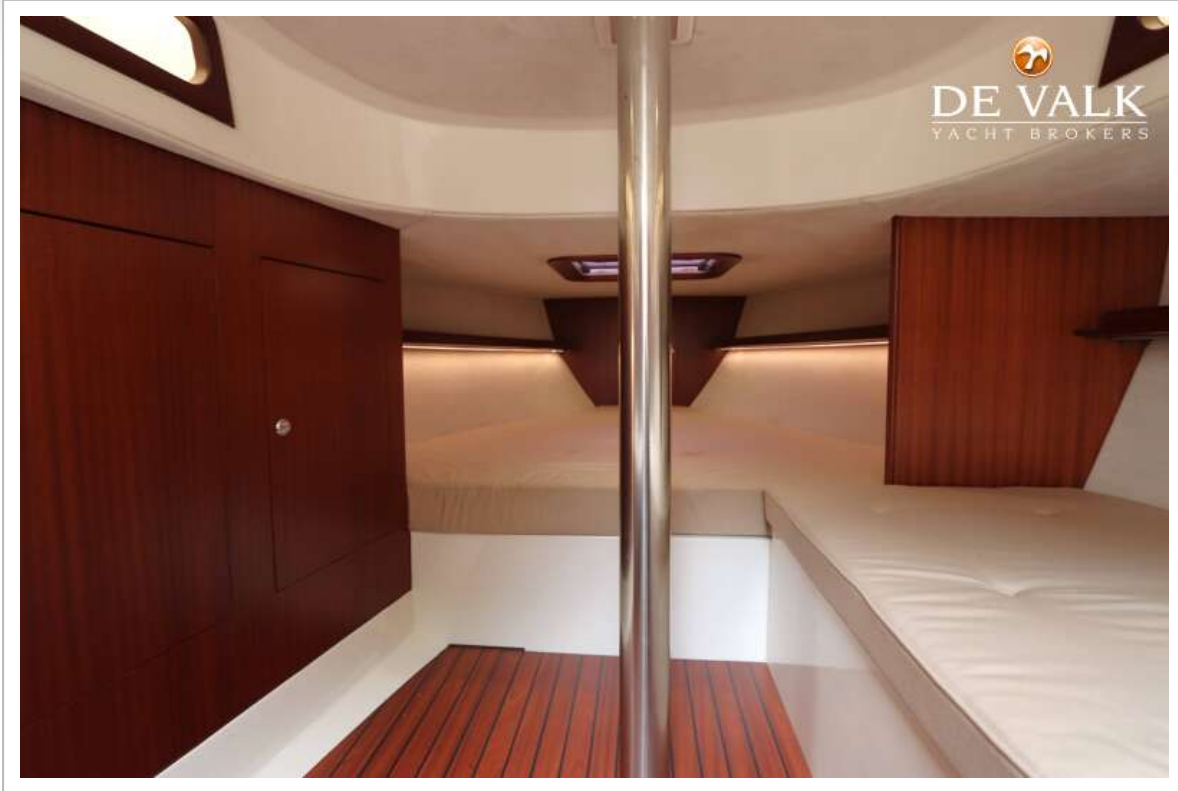
EAGLE 38



EAGLE 38

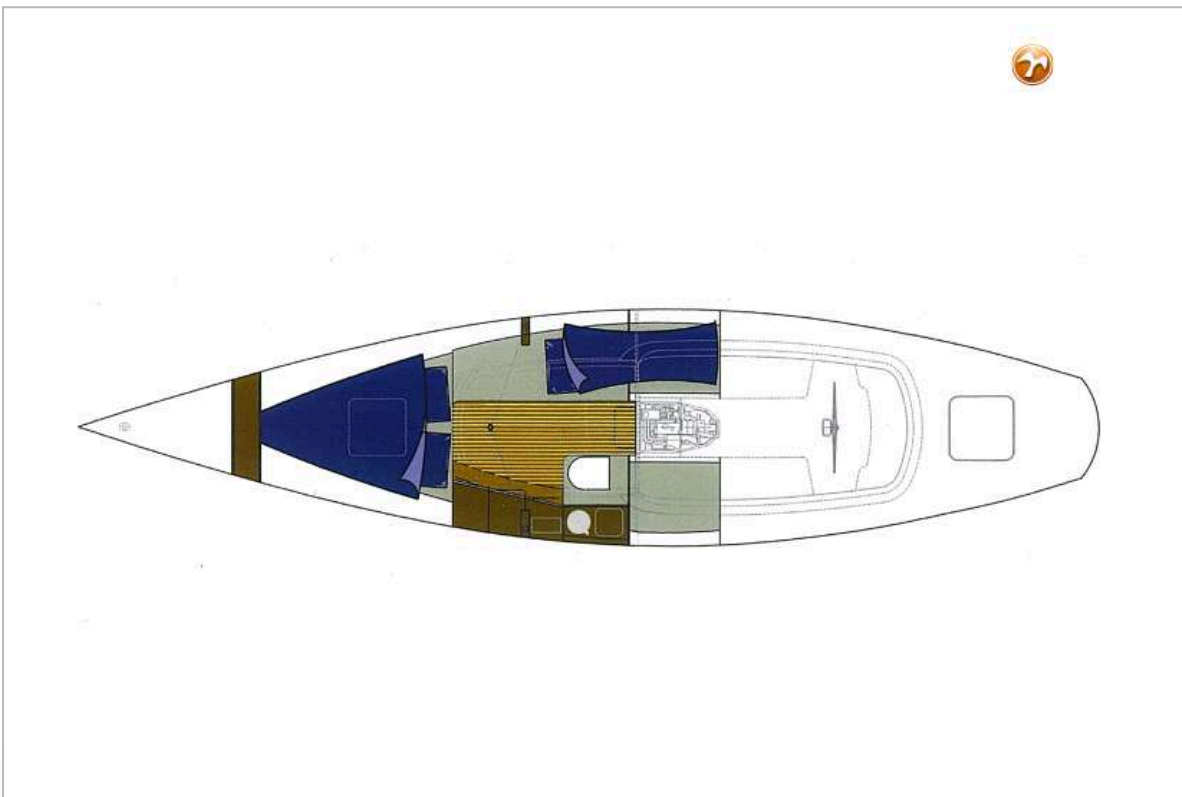


EAGLE 38





EAGLE 38



EAGLE 38

