



CATALINA 320



CATALINA 320

BROKER'S COMMENTS

The Catalina 320 offers a perfect balance of performance and comfort. Its responsive sail plan and stable hull make it a joy to sail, while still being easy to handle for a small crew. Inside, the Catalina 320 features a spacious salon, functional galley, and two large cabins, ideal for weekend trips or longer cruises. It's designed for sailors seeking a blend of comfort, ease, and reliability.

Cristián Figari Jullian

SPECIFICATIONS

Dimensions	9.91 x 3.58 x 1.32 (m)	Builder	Catalina Yachts
Built	1999	Cabins	
Material	GRP	Berths	
Engine(s)	1 x diesel	Hp/Kw	32 (hp), 23.55 (kw)
Asking price	€ 49.000 (VAT Paid)	Lying	

CONTACT

Sales office	De Valk Costa Blanca	Telephone	+34965021569
Address	Costa Blanca Region 03730 Javea Alicante Spain	E-mail	costablanca@devalk.nl

DISCLAIMER

These particulars are given in good faith as supplied but cannot be guaranteed.



CATALINA 320

GENERAL

Model	CATALINA 320
Type	sailing yacht
LOA (m)	9,91
Beam (m)	3,58
Draft (m)	1,32
Year built	1999
Builder	Catalina Yachts
Country	U.S.A.
Ballast (tonnes)	1.9
Hull material	GRP
Hull colour	white
Hull shape	deep-V
Keel type	fin keel
Superstructure material	GRP
Deck material	GRP
Deck finish	non-skid moulded in
Cockpit deck finish	teak
Antifouling (year)	2021
Window frame	aluminium
Window material	polycarbonate
Deckhatch	yes
Portholes	aluminium
Fuel tank (litre)	yes
Level indicator (fuel tank)	yes
Freshwater tank (litre)	yes
Level indicator (freshwater)	yes
Wheel steering	cable steering
Emergency tiller	yes

ACCOMMODATION



CATALINA 320

Layout	2 Cabins/ 6 Berths
Floor	wood
Saloon	yes
Headroom saloon (m)	1.80
Convertible berth	Saloon
Galley	yes
Countertop	corian
Sink	stainless steel
Cooker	calor gas
Oven	yes
Fridge	yes
Hot water system	by engine
Water pressure system	electrical
Toilet	yes
Shower	yes
Guest cabin 1	yes
Guest cabin 2	yes

MACHINERY

No of engines	1
HP	32
kW	23.55
Fuel	diesel
Engine cooling system	seawater
Drive	shaft
Engine controls	bowden cable
Propeller type	fixed
Propeller blades	3
Propeller shaft material	stainless steel
Shaft lubrication	water
Start battery	yes



Service battery	yes
Battery charger	yes
Shorepower	with cable

NAVIGATION

Compass	yes
Depth sounder/log	yes
VHF	yes
Autopilot	yes
Rudder angle indicator	yes
GPS	yes
EPIRB	yes

EQUIPMENT

Bathing platform	yes
Boarding ladder	yes
Anchor	yes
Anchor chain	yes
Windlass	yes
Dinghy	inflatable
Fenders	yes
Mooring lines	yes
Fire extinguisher	yes

RIGGING

Rigging	sloop
Standing rigging	wire
Material mast	aluminium
Spreaders	yes
Mainsail	yes



Mainsail cover	yes
Genoa	yes
Reefing System	yes



CATALINA 320



CATALINA 320



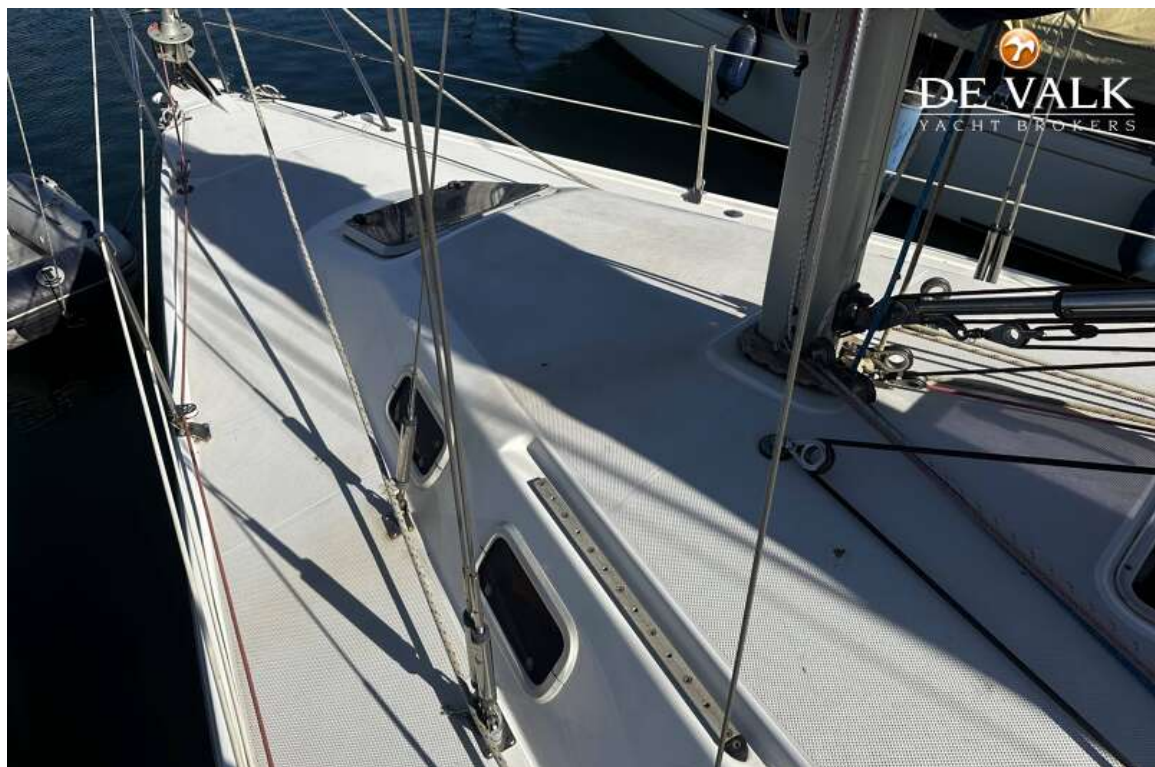
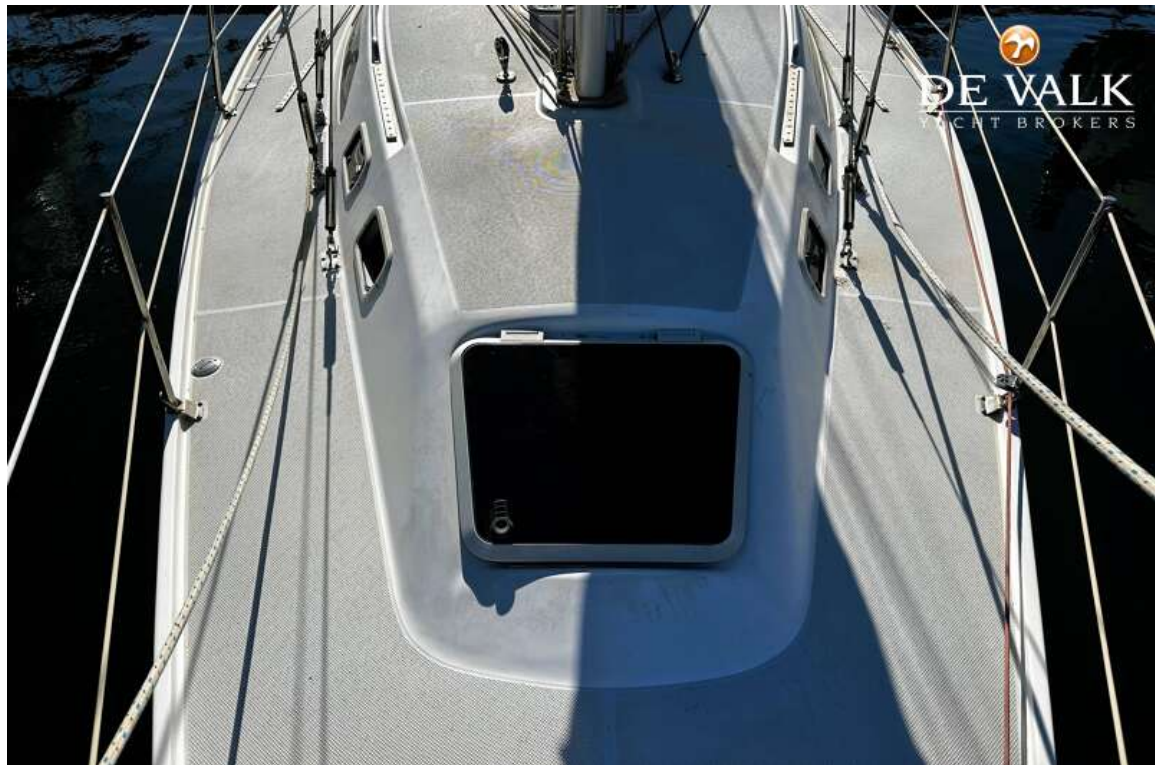
CATALINA 320



CATALINA 320



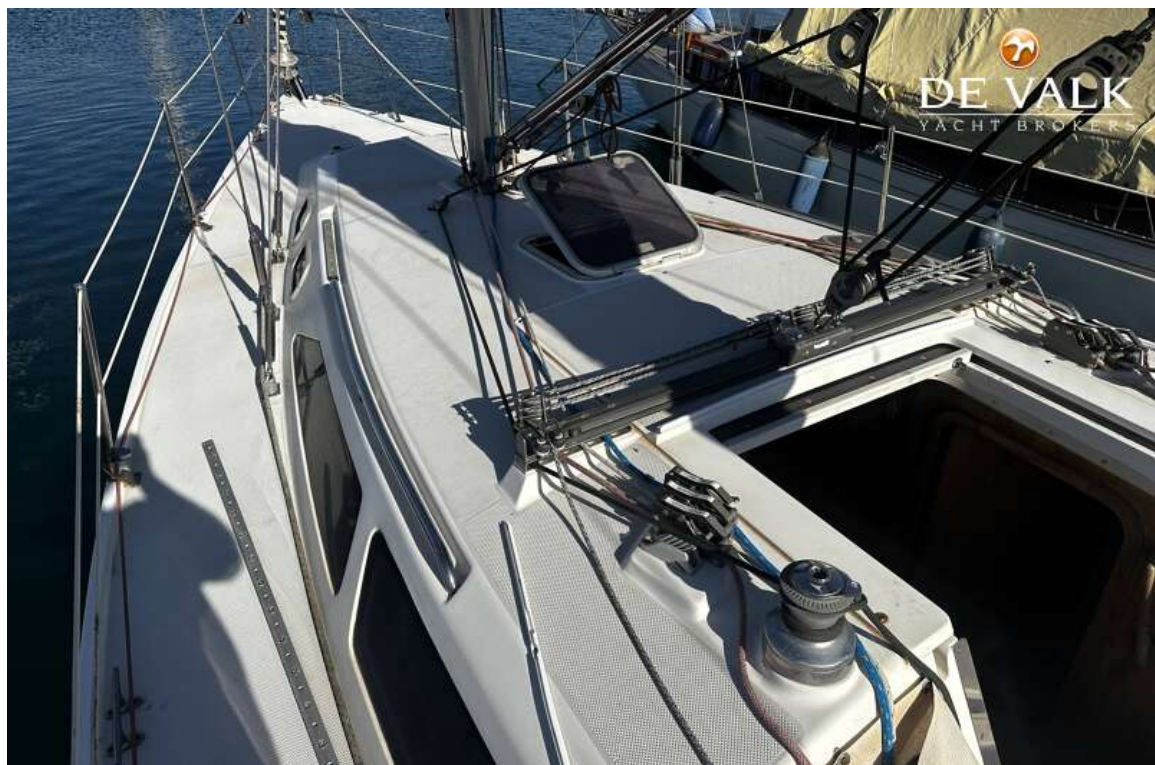
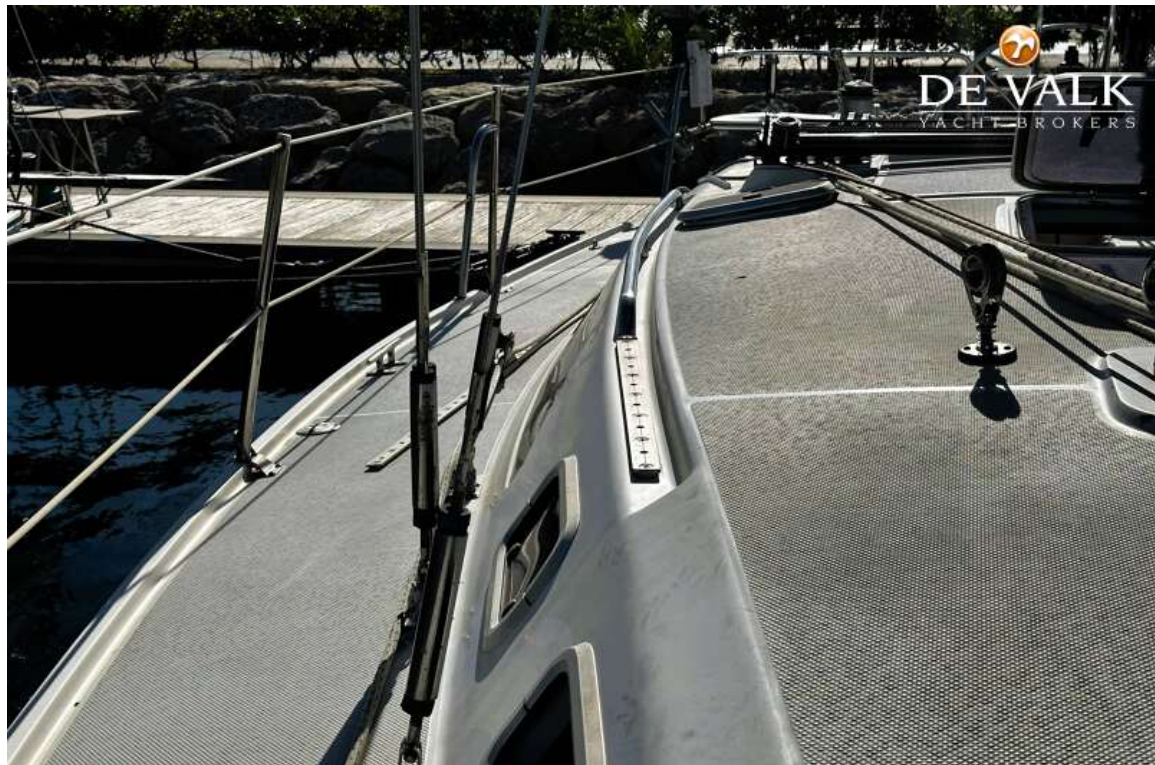
CATALINA 320



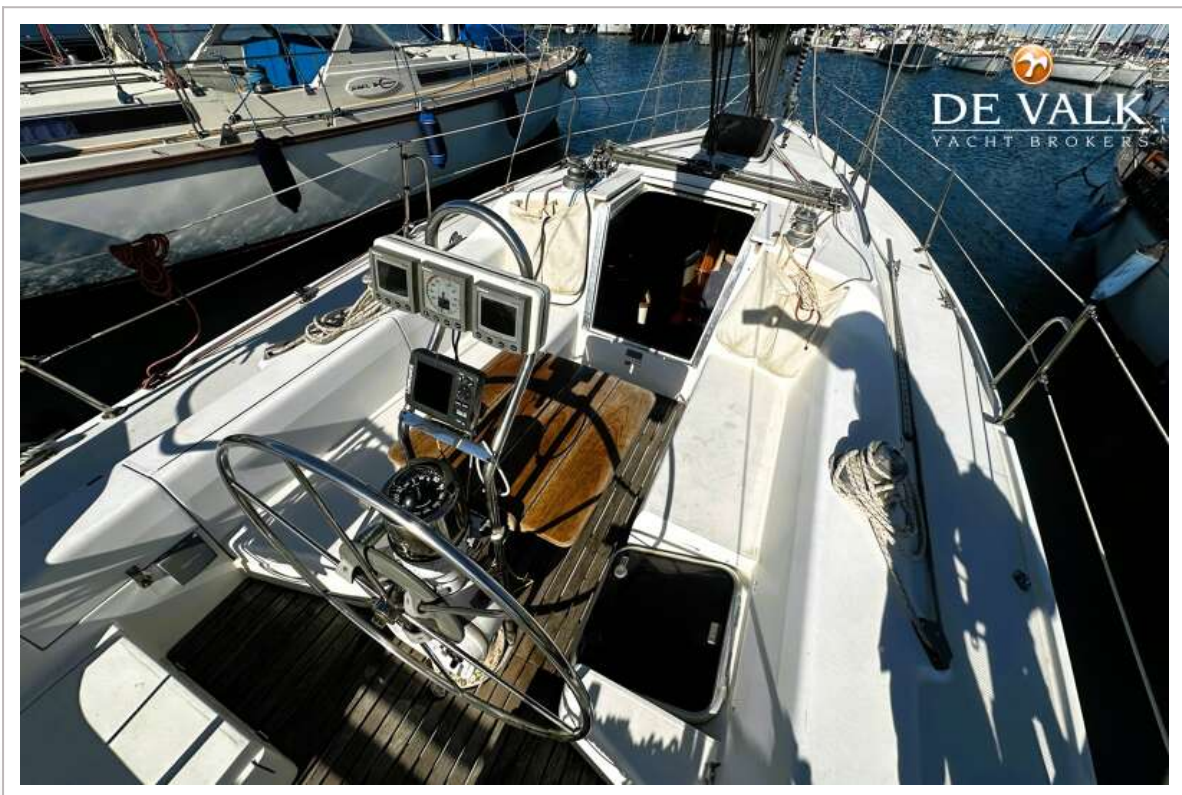
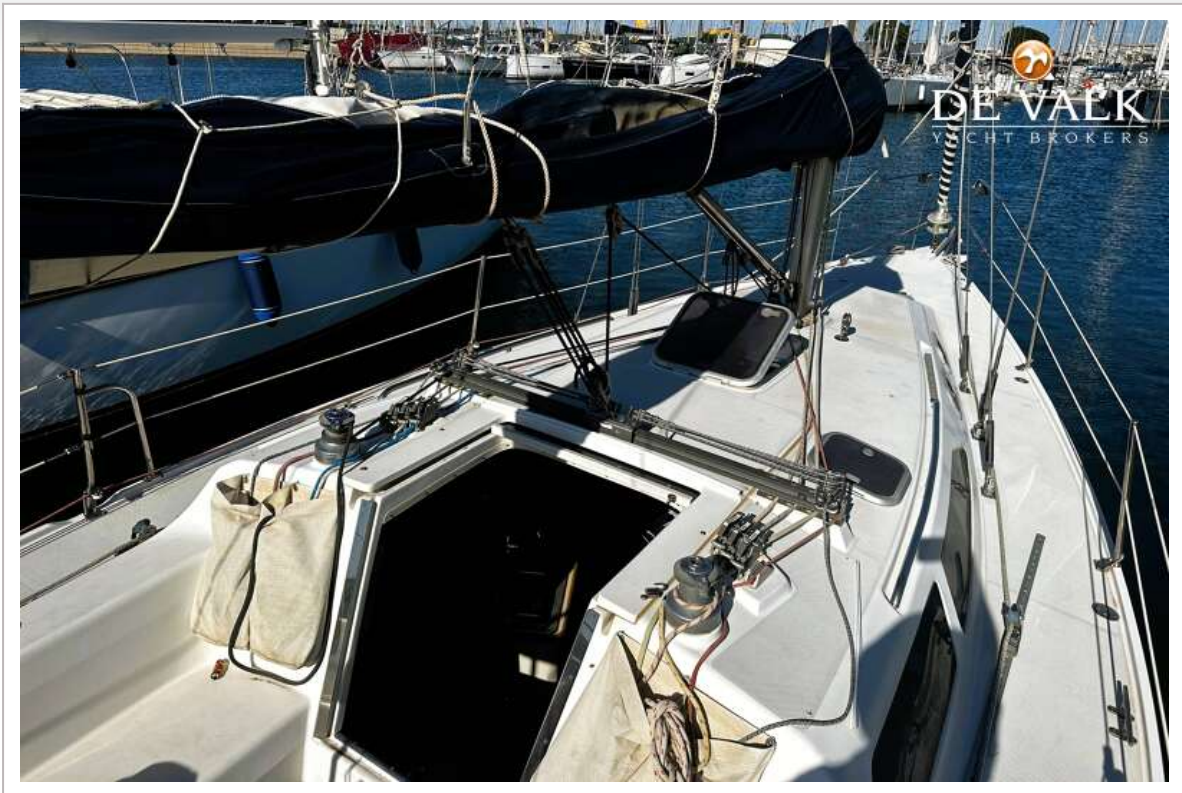
CATALINA 320



CATALINA 320



CATALINA 320



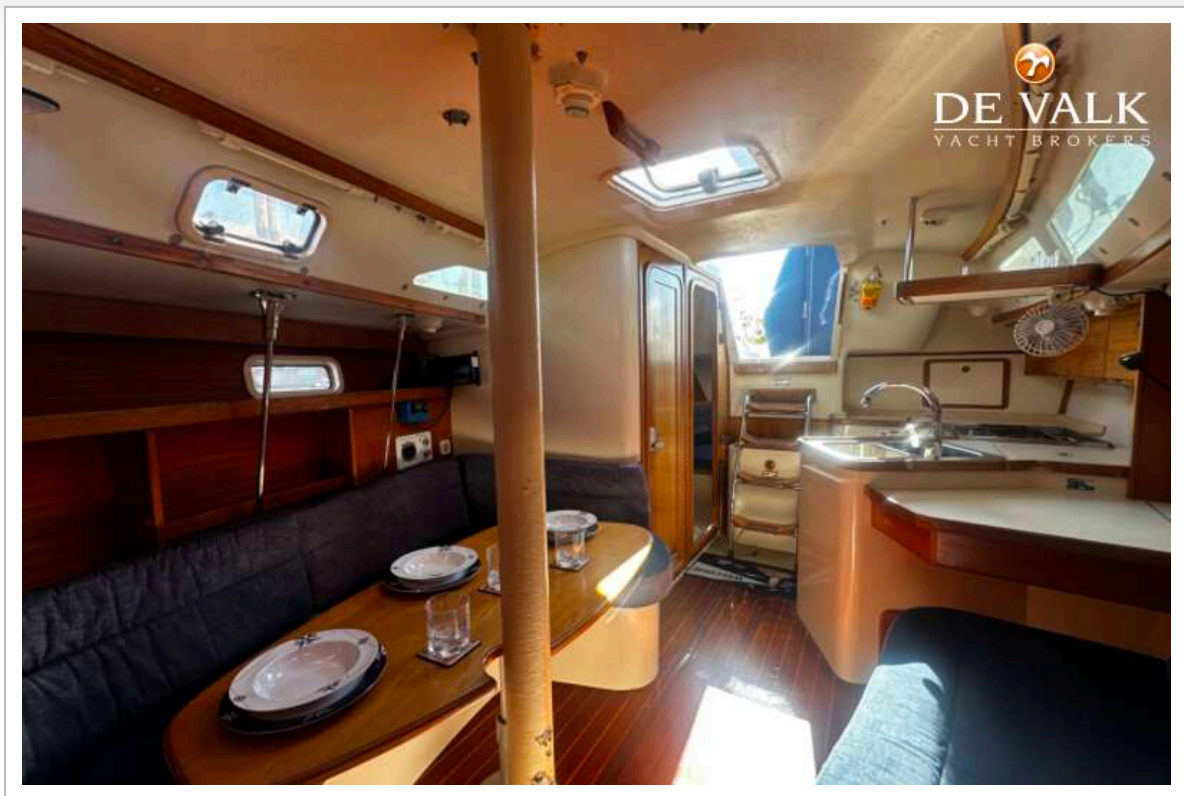
CATALINA 320



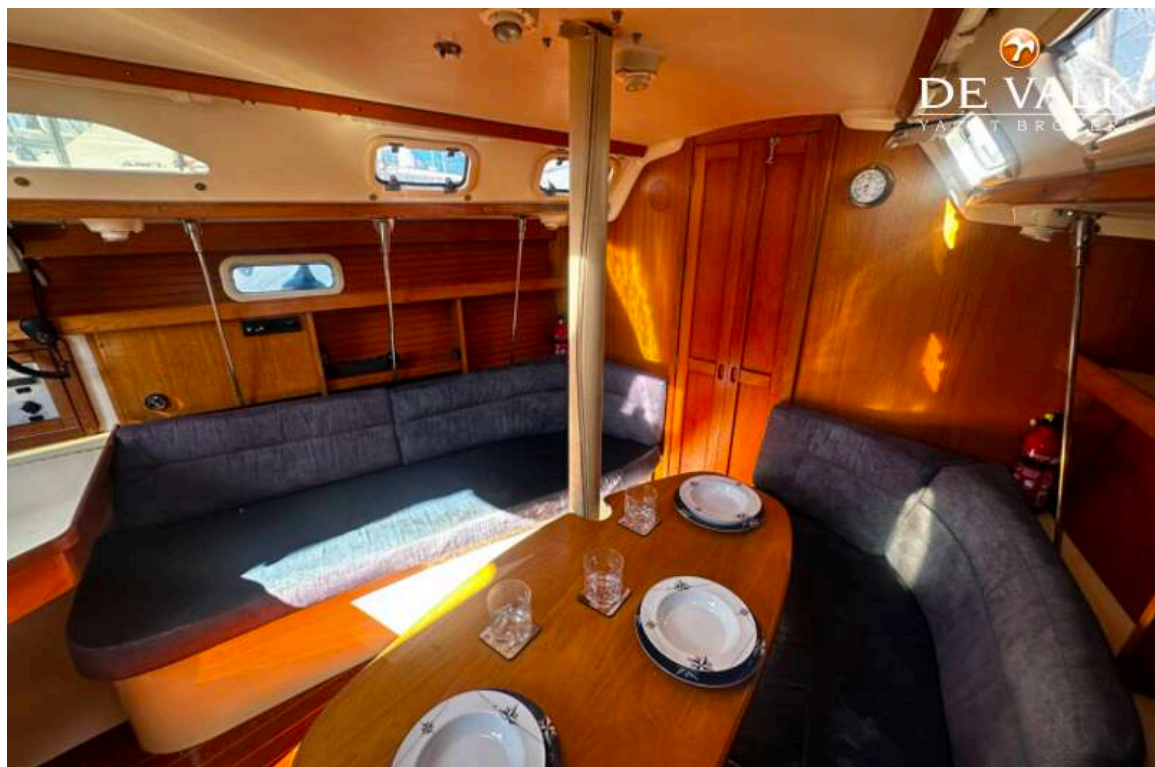
CATALINA 320



CATALINA 320



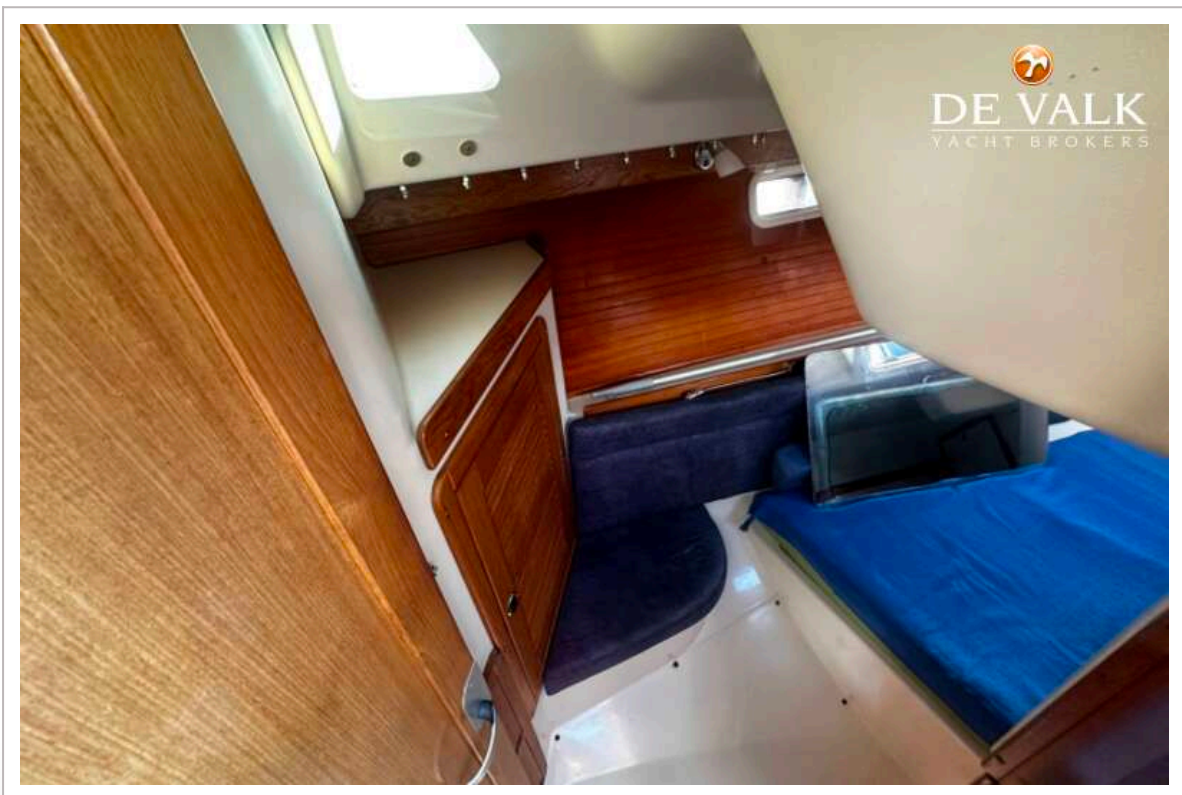
CATALINA 320



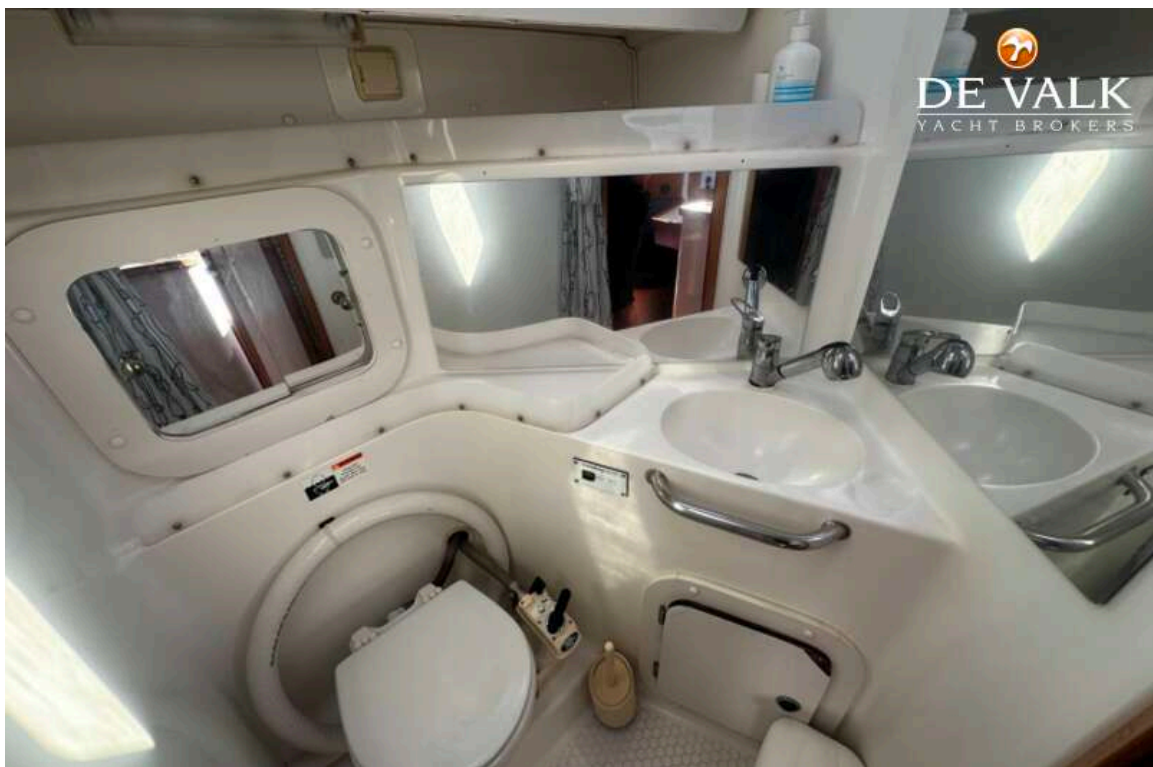
CATALINA 320



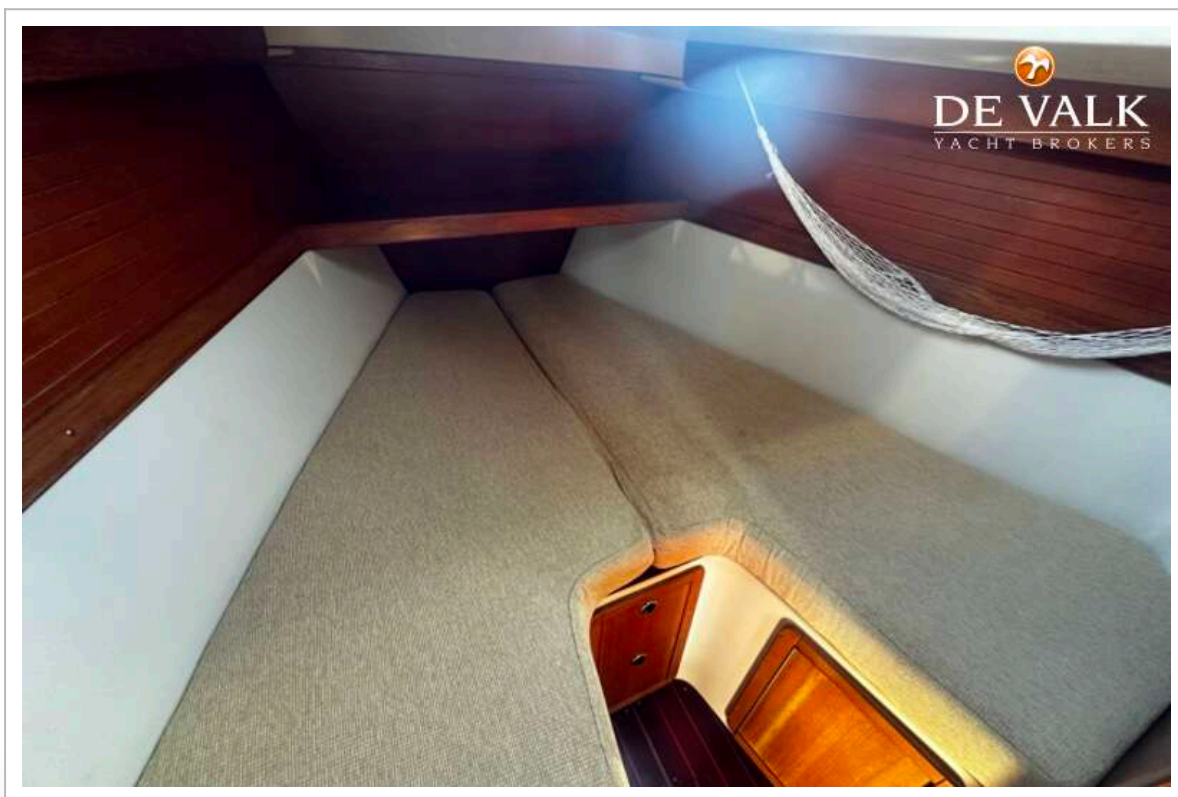
CATALINA 320



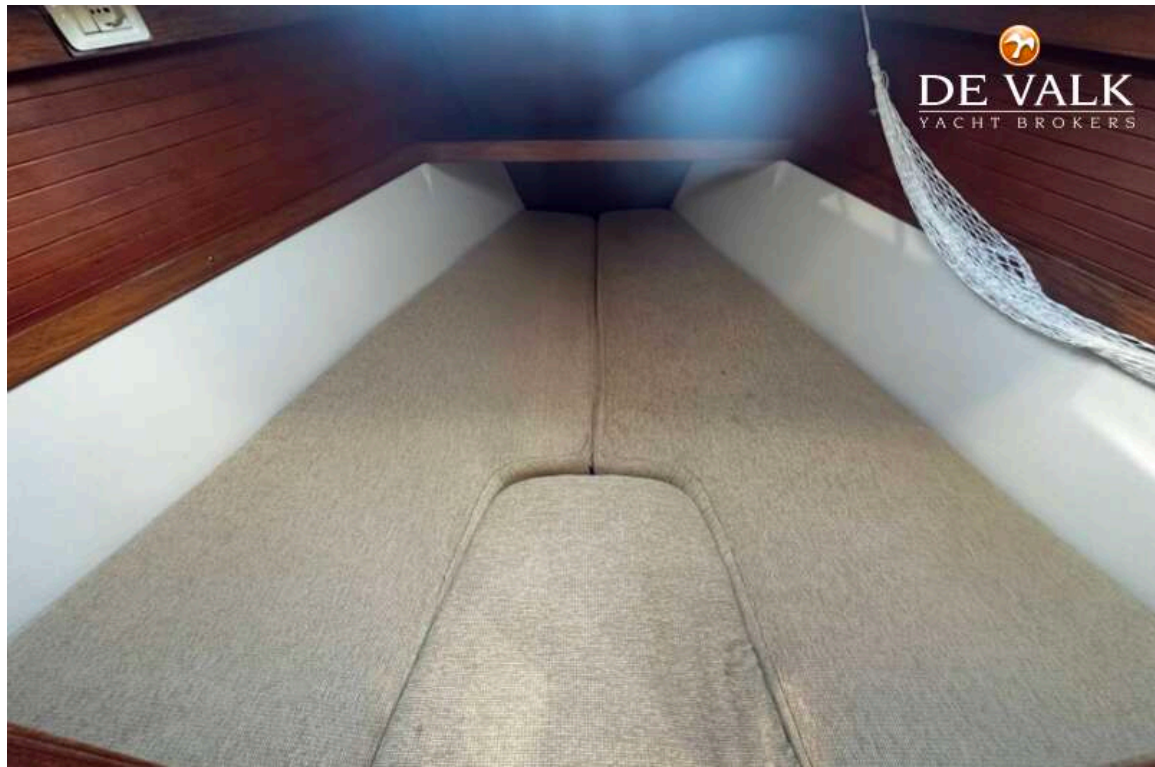
CATALINA 320



CATALINA 320



CATALINA 320



CATALINA 320



CATALINA 320

