



DE VALK  
YACHT BROKERS



## GUARDIAN 50



DE VALK  
YACHT BROKERS

## BROKER'S COMMENTS

The GUARDIAN 50 was built in 2004, designed by Van Oossanen and styled by Rene Van der Velden. The yacht belongs to the first owner and she has always been in a boathouse. The yacht is 14.95 meters long, has a composite hull and has five berths. The Guardian is seaworthily built and has 3 watertight compartments with a collision bulkhead and CE-A certification. Equipment includes 2 Yanmar diesel engines of 500 hp each, an advanced navigation system by Raymarine, and various luxury features such as air conditioning, central heating, and a full galley with Miele appliances.

*Mark Hesselmans*

## SPECIFICATIONS

<b>Dimensions</b>	14.95 x 4.90 x 1.00 (m)	<b>Builder</b>	Blue Print Marine B.V.
<b>Built</b>	2004	<b>Cabins</b>	3
<b>Material</b>	GRP	<b>Berths</b>	5
<b>Engine(s)</b>	2 x Yanmar 6CXM GTE2 diesel	<b>Hp/Kw</b>	2 x 500.00 (hp), 368.00 (kw)
<b>Asking price</b>	Under Offer (VAT )	<b>Lying</b>	elsewhere / Not at sales office

## CONTACT

<b>Sales office</b>	De Valk Loosdrecht	<b>Telephone</b>	+31 35 582 90 30
<b>Address</b>	't Breukeleveense Meentje 6 1231 LM Loosdrecht / Wijdmeren The Netherlands	<b>E-mail</b>	loosdrecht@devalk.nl

## DISCLAIMER

These particulars are given in good faith as supplied but cannot be guaranteed.



## GENERAL

<b>Model</b>	GUARDIAN 50
<b>Type</b>	motor yacht
<b>LOA (m)</b>	14,95
<b>Beam (m)</b>	4,90
<b>Draft (m)</b>	1,00
<b>Air draft min (m)</b>	3,40
<b>Year built</b>	2004
<b>Launched</b>	2005
<b>Builder</b>	Blue Print Marine B.V.
<b>Country</b>	The Netherlands
<b>Designer</b>	Rene van der Velden/Piet van Oossaanen
<b>Displacement (t)</b>	17,5
<b>CE norm</b>	A
<b>Hull material</b>	GRP
<b>Hull colour</b>	blue
<b>Hull thickness (mm)</b>	The hull is made of Aramide viber with composite
<b>Hull shape</b>	V-shaped hull Designer: Piet van Oossaanen
<b>Rubbing strake</b>	rubber
<b>Deck material</b>	GRP
<b>Deck finish</b>	teak
<b>Superstructure deck finish</b>	non-skid moulded in
<b>Cockpit deck finish</b>	teak
<b>Window frame</b>	aluminium
<b>Window material</b>	glass With screens
<b>Deckhatch</b>	3x
<b>Flybridge</b>	yes
<b>Radar arch</b>	collapsible Hydraulic and the air draft lowered with 1.2m when down
<b>Fuel tank (litre)</b>	1500 composite
<b>Fuel tank 2 (litre)</b>	1500 composite
<b>Level indicator (fuel tank)</b>	yes



<b>Freshwater tank (litre)</b>	stainless steel 1000 in total in 2 tanks
<b>Level indicator (freshwater)</b>	yes
<b>Blackwater tank (litre)</b>	polyethylene 500
<b>Level indicator (blackwater)</b>	With cleaning system
<b>Greywater tank (litre)</b>	polyethylene 500
<b>Level indicator (greywater)</b>	With cleaning system
<b>Wheel steering</b>	hydraulic With emergency control in chart table
<b>Inside helm position</b>	Follow-up steering on tiller
<b>Flybridge helm position</b>	Follow-up steering on tiller
<b>More info on hull</b>	Hull tanktest are done by Marin Wageningen en Southampton
<b>Extra info</b>	Captain seats from Recaro Maritime
<b>Extra info</b>	Rheinstrom Macerator pump for grey and blackwater system
<b>Extra info</b>	Lloyds conditions built

## ACCOMMODATION

<b>Cabins</b>	3
<b>Berths</b>	5
<b>Interior</b>	mahogany
<b>Layout</b>	yes
<b>Floor</b>	carpet
<b>Pilot house</b>	yes
<b>Saloon</b>	yes
<b>Heating</b>	central heating DMV Maritime Booster climate controlled heated en chilled water
<b>Air-conditioning</b>	single cycle airco CLD Marine 2 compressor system
<b>Chart table</b>	yes
<b>Opening door to cockpit</b>	yes
<b>Galley</b>	yes
<b>Countertop</b>	corian
<b>Sink</b>	stainless steel
<b>Cooker</b>	induction Siemens



# GUARDIAN 50

<b>Extractor</b>	Miele stainless steel
<b>Microwave/oven combi</b>	Miele M615 EG
<b>Fridge</b>	yes
<b>Freezer</b>	Inside Fridge
<b>Hot water system</b>	on central heating DMV Maritime Booster
<b>Water pressure system</b>	electrical Hydrofoor with 20l presuretank and 32l p/m 3 presure
<b>Dishwasher</b>	Miele
<b>Owners cabin</b>	double bed
<b>Wardrobe</b>	hanging/drawers/shelves Sufficient storage space
<b>Bathroom</b>	en suite
<b>Toilet</b>	en suite Tecma
<b>Toilet system</b>	vacuum
<b>Wash basin</b>	in the bathroom
<b>Shower</b>	en suite
<b>Guest cabin 1</b>	twin single
<b>Wardrobe</b>	shelves Sufficient storage space
<b>Bathroom</b>	en suite
<b>Toilet</b>	shared Tecma
<b>Toilet system</b>	vacuum
<b>Wash basin</b>	in the cabin
<b>Shower</b>	en suite
<b>Guest cabin 2</b>	single bed
<b>Wardrobe</b>	hanging and shelves
<b>Bathroom</b>	separate
<b>Toilet</b>	separate Tecma
<b>Toilet system</b>	vacuum
<b>Washing machine/dryer combi</b>	Miele Softtronic WT945S in the guest cabin

## MACHINERY

<b>No of engines</b>	2
<b>Make</b>	Yanmar



# GUARDIAN 50

Type	6CXM GTE2
HP	500
kW	368
Fuel	diesel
Maximum speed (kn)	27
Cruising speed (kn)	20
Range (nm)	600
Engine hours	672
Engine cooling system	freshwater heat exchanger
Drive	shaft
Engine controls	electrical Rexroth
Gearbox	hydraulic ZF 230-1A
Engine controls	electrical
Bowthruster	electric Maxpower
Thrust bearing	yes
Propeller type	fixed
Propeller blades	5
Propeller shaft material	stainless steel
Shaft lubrication	water Ceramic seal Amartech
Manual bilge pump	yes
Electric bilge pump	yes
Electrical installation	yes
Generator	wet exhaust Mase IS 9S 6KVA
Batteries	6x 200 Ah
Start battery	Optima Redtop
Bowthruster battery	yes
Battery monitor	Victron CCGX met B507BY VRM platform with online smartphone app
Battery charger	Victron charger for start batteries and generator batterie
Battery charger/inverter	Victron Quattro 24/8000/200
Shorepower	with cable
Extra info	Extra strong Dynamo 210A 24V on starboard engine



Extra info

Trimsystem with tank pumps

## NAVIGATION

Compass on flybridge

Raymarine Hybridtouch

Electric compass

yes

Multi control display

Raymarine I70S and Raymarine Hybridtouch

Depth sounder

yes

Depth sounder/log

Raymarine DST800-0° Smart triducer. ThruHull, low profile

VHF

Raymarine Ray 60,70, 90 Raymic handset

Autopilot

Raymarine p70Rs

Rudder angle indicator

Raymarine p70Rs

Radar

Raymarine RA1048HD 4kW 122cm HD Color open scanner

GPS

Raystar 150 10Hz GPS/Glonass/ BeiDou antenne (STng) incl

Plotter/GPS

Raymarine Hybridtouch Navionics Plus

Navtex

ICS NAV6

Wifi antenna

5G

Camera

yes

Navigation lights

LED

Searchlight

Jabsco

Loudhailer

yes

Extra info

All Raymarine equipment is double on flybridge

Extra info

Air compressor that can be used on deck and in the engine room

## EQUIPMENT

Fixed windscreen

yes

Bimini

Seaworthy 2022 renewed

Cockpit cushions

yes

Cockpit table

yes

Boarding ladder

stainless steel Always possible to open from the water

Gangway

yes

Deck shower

Hot and cold water



# GUARDIAN 50

Anchor	Stainless steel
Anchor chain	yes
Windlass	electrical
Deck wash	yes
Sea railing	stainless steel
Grab rail (superstructure)	stainless steel
Railing side opening gates	yes
Horn	yes
Fenders	yes
Mooring lines	yes
Radio	Bose 3.1 with Bluetooth
Fire extinguisher	And fire blankets
Auto extinguisher system	In engineroom
Extra info	Stainless steel flagpole





# GUARDIAN 50

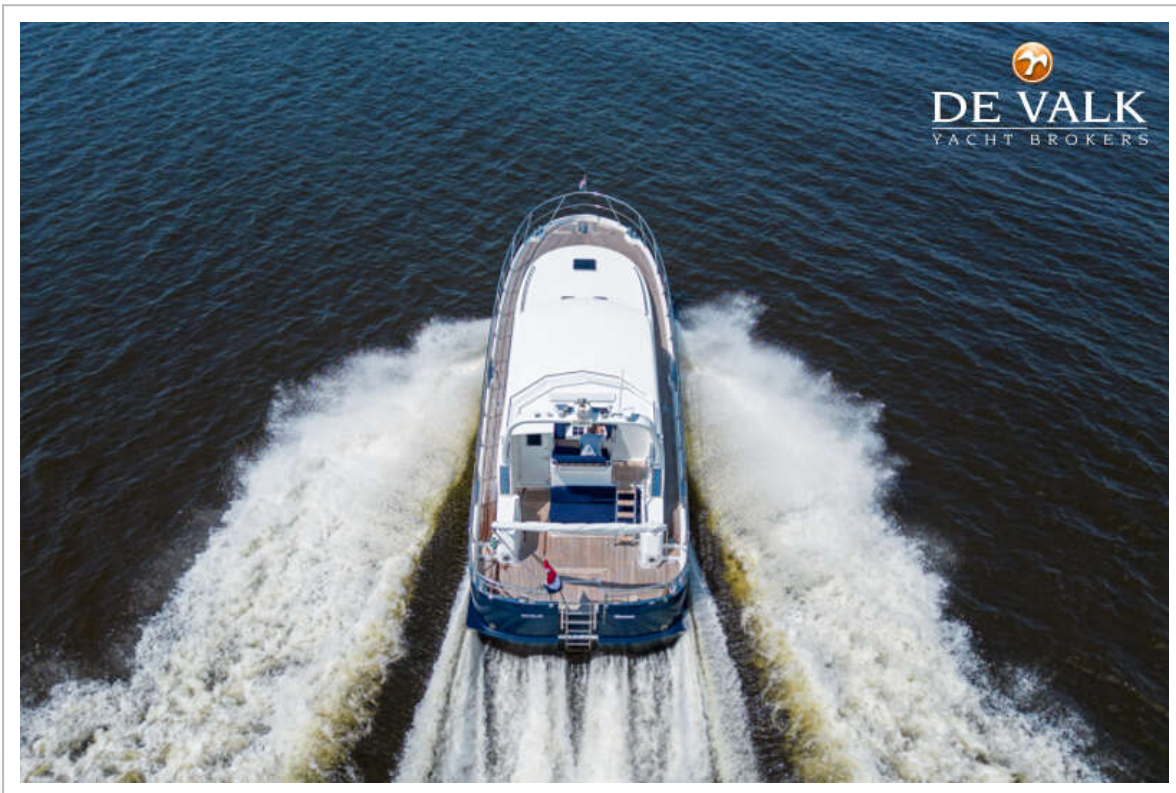


# GUARDIAN 50





# GUARDIAN 50



# GUARDIAN 50

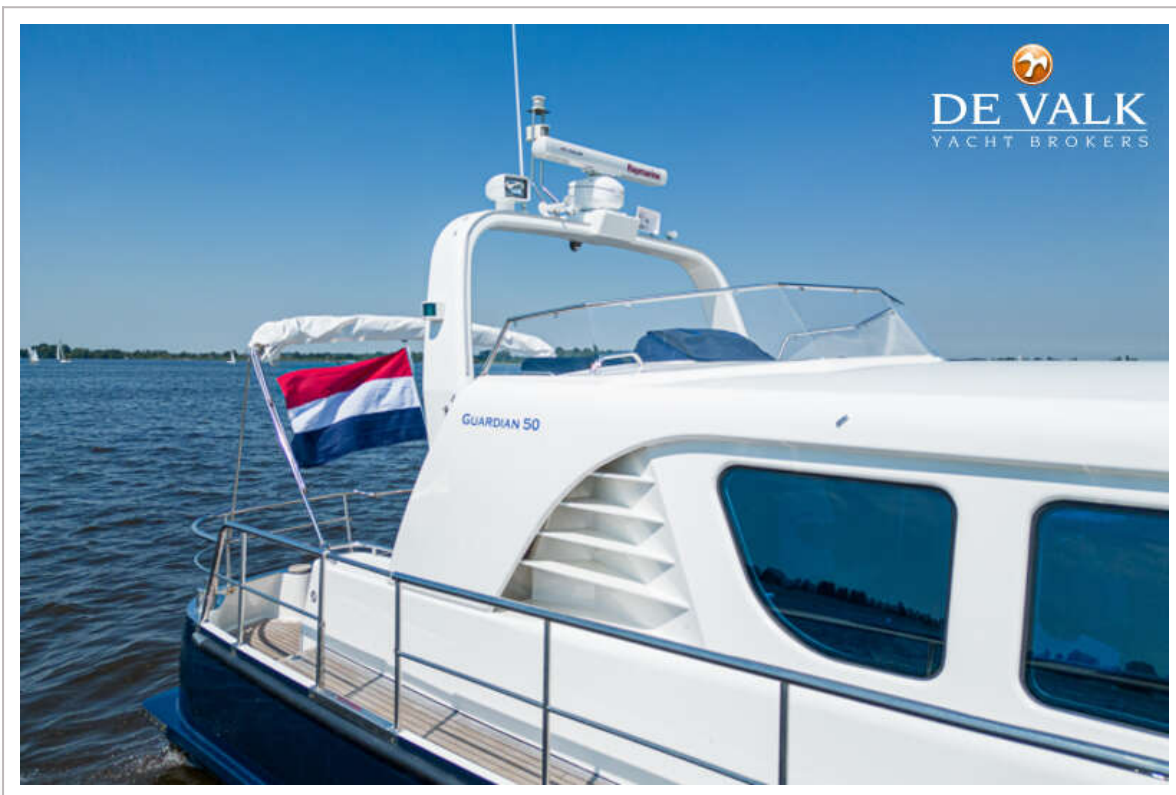




# GUARDIAN 50

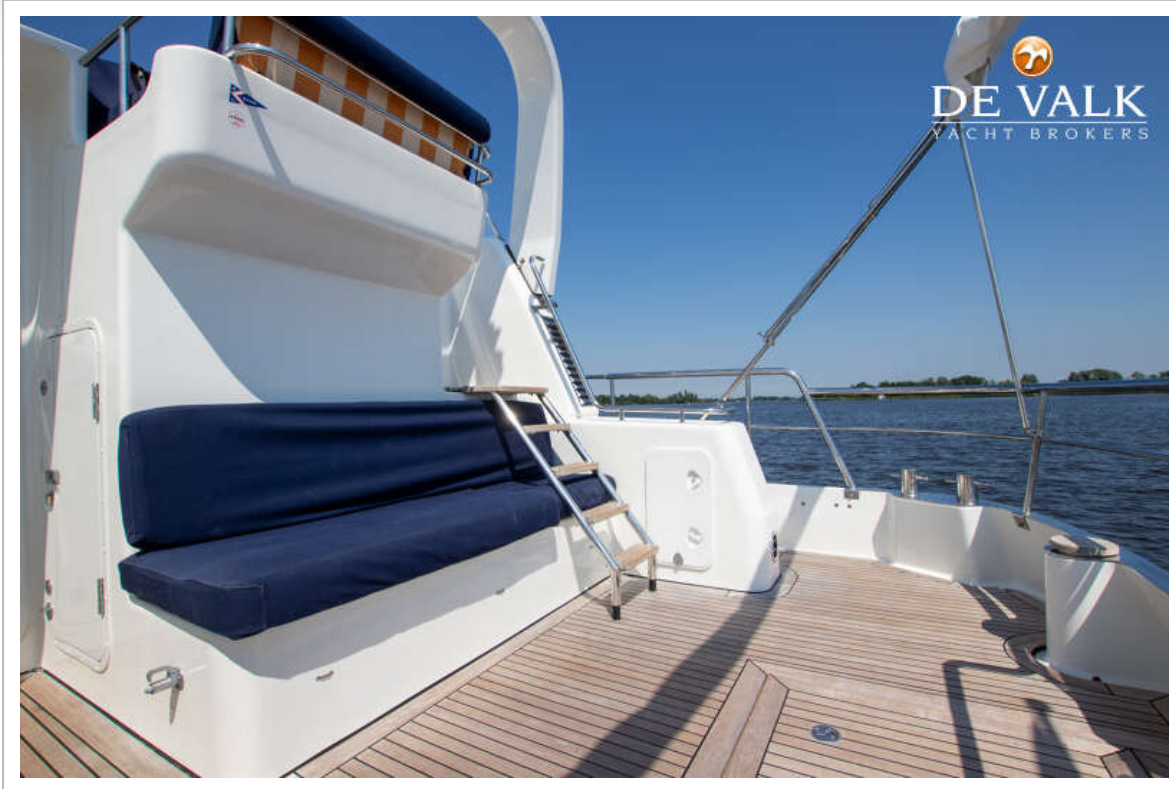


# GUARDIAN 50

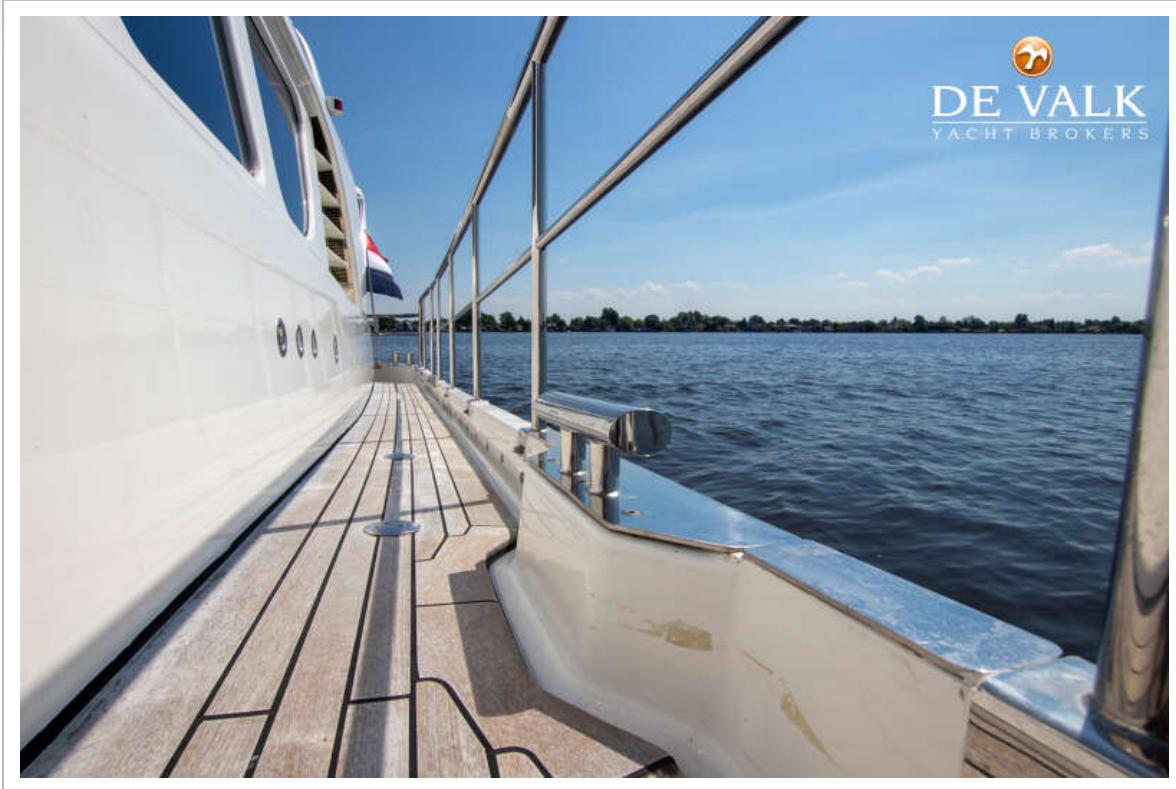




# GUARDIAN 50

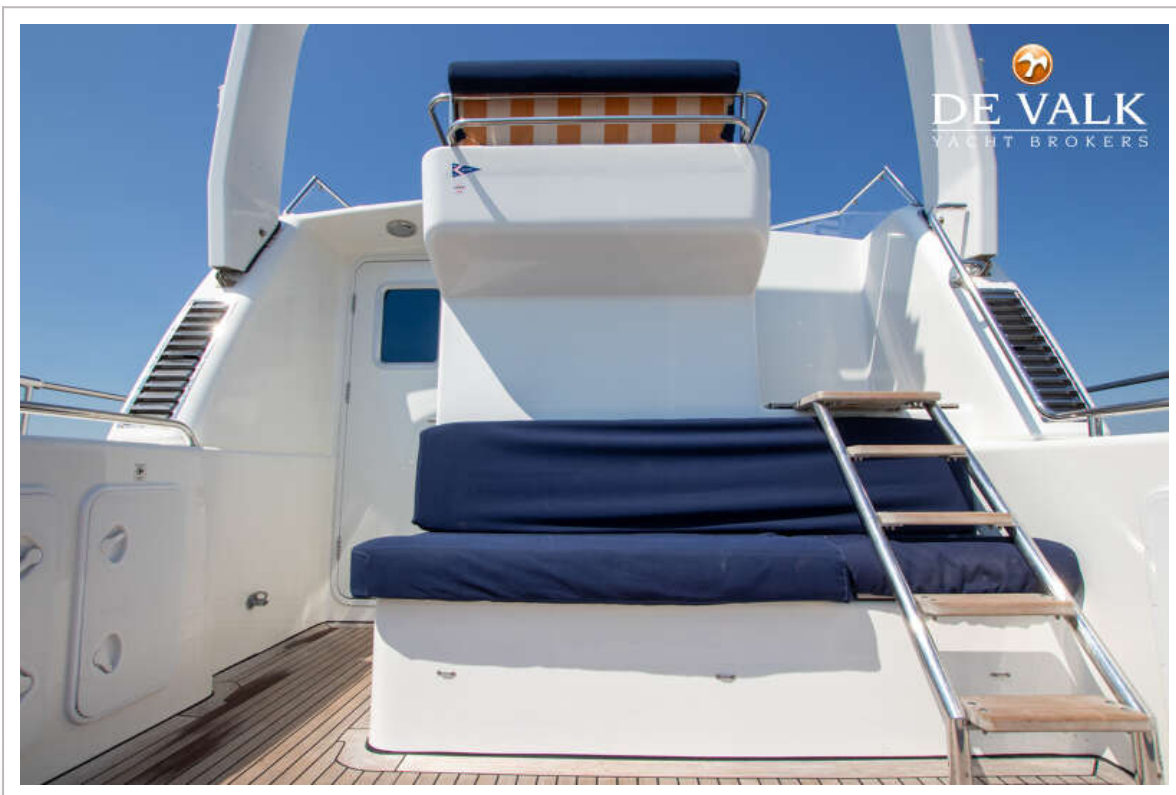


# GUARDIAN 50

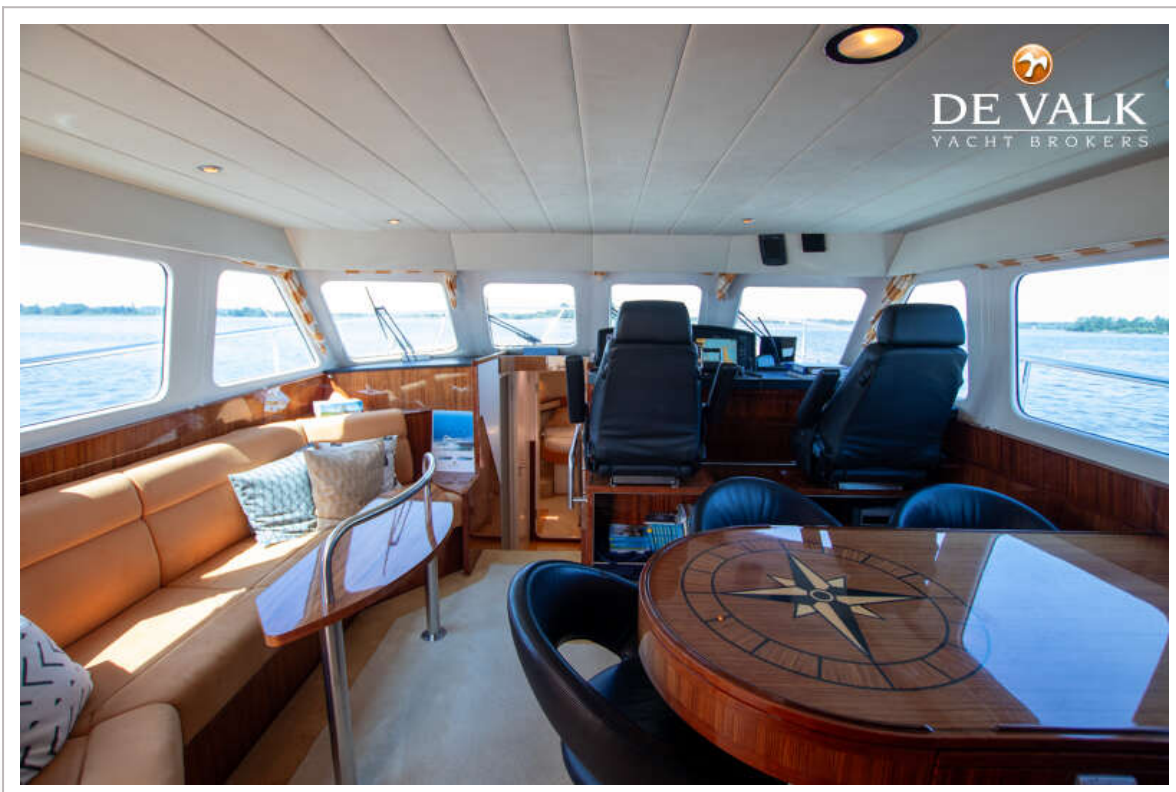




# GUARDIAN 50

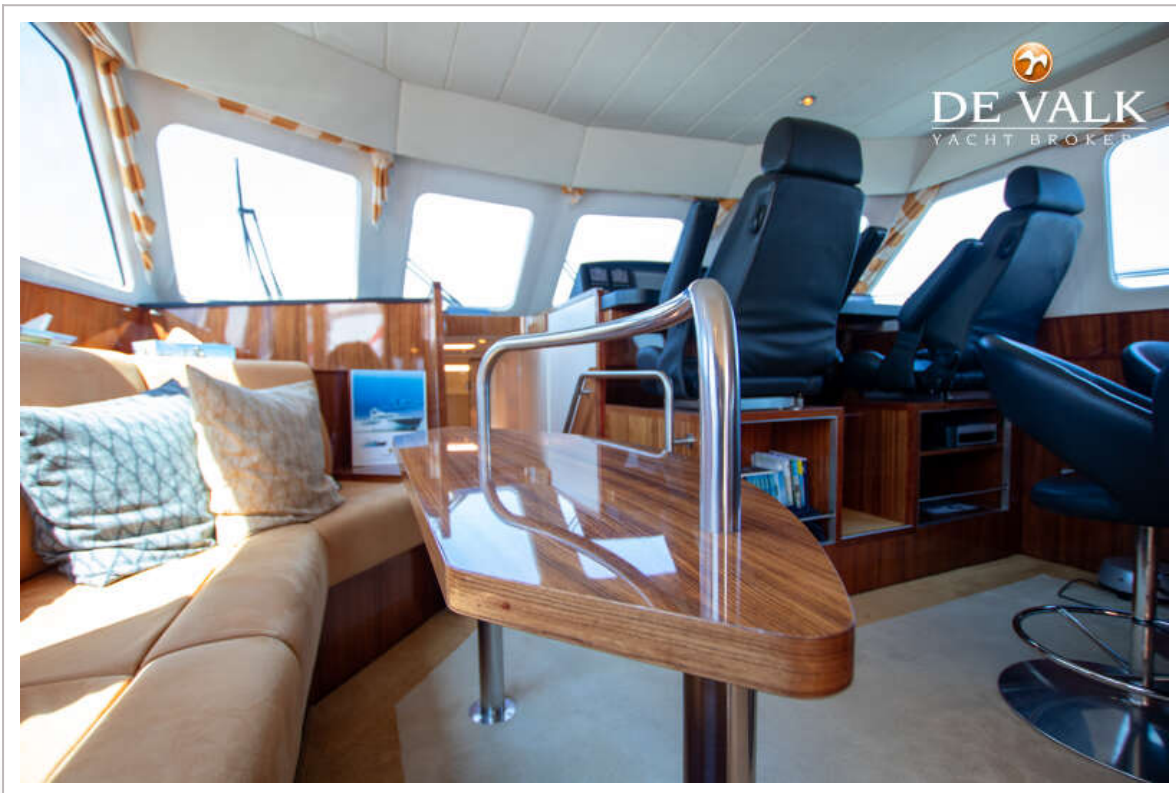
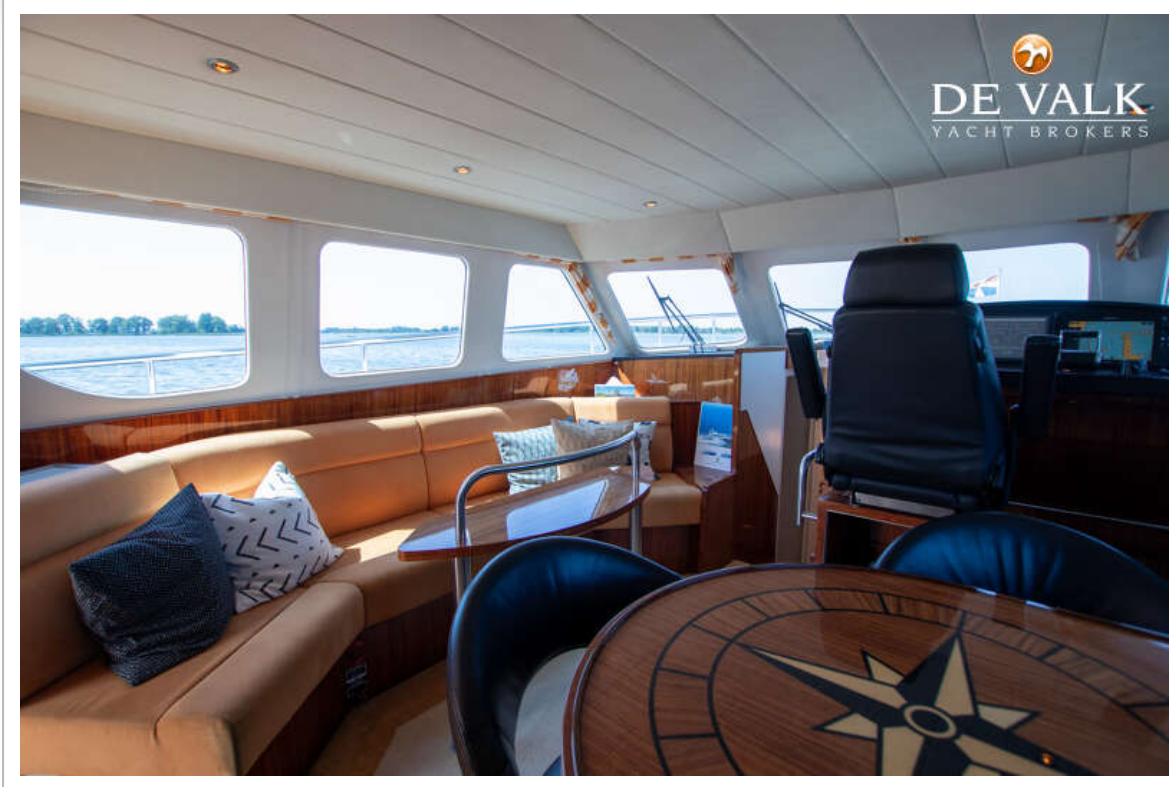


# GUARDIAN 50

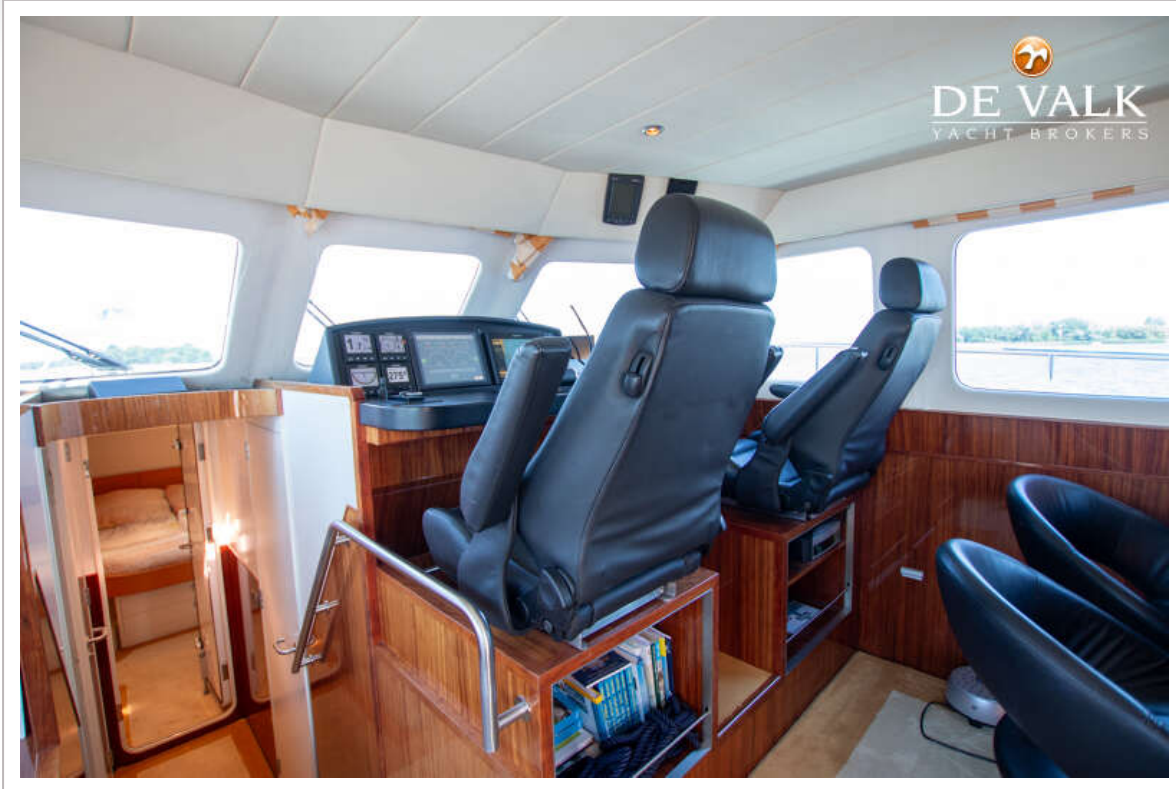




# GUARDIAN 50

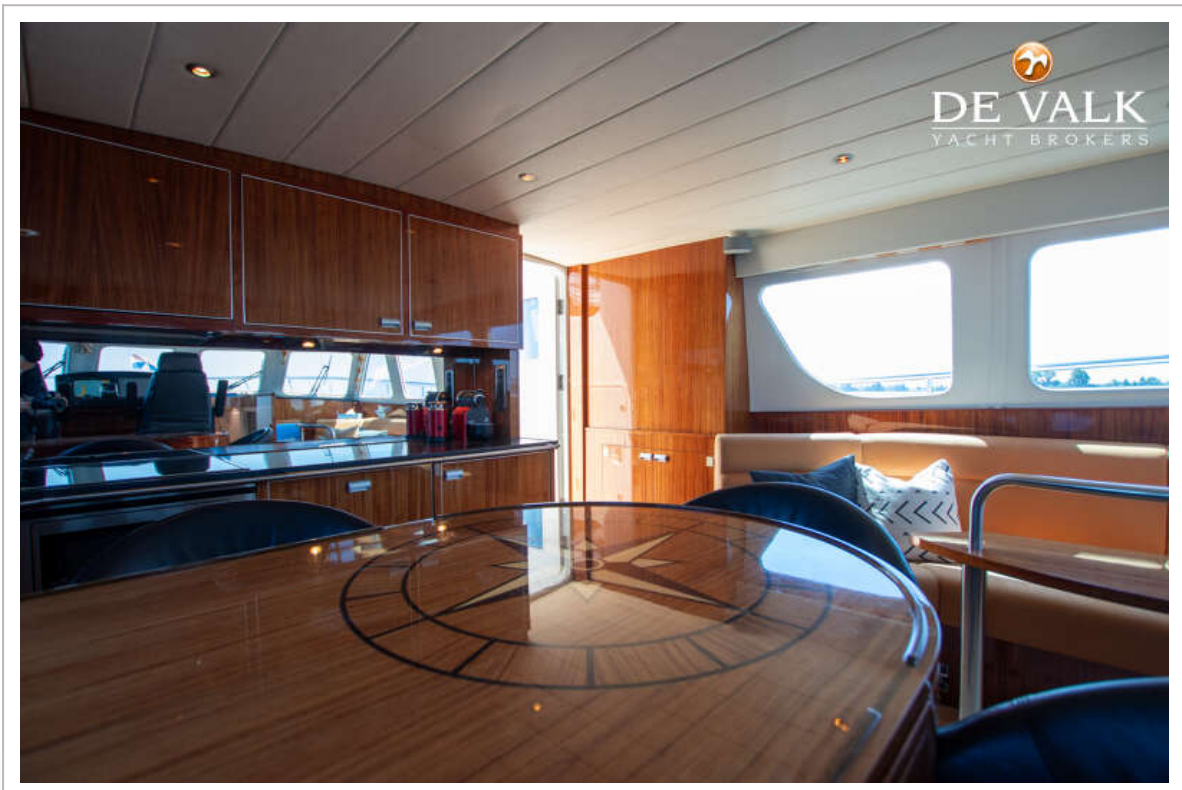
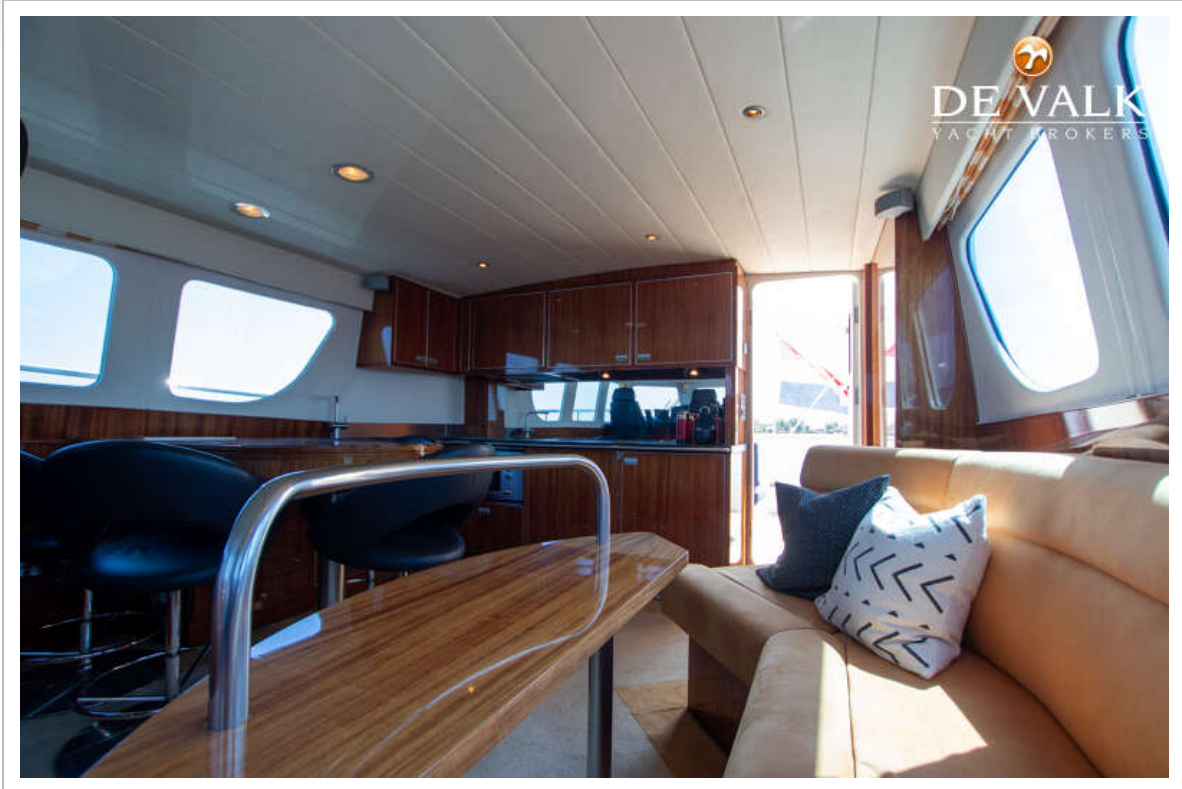


# GUARDIAN 50

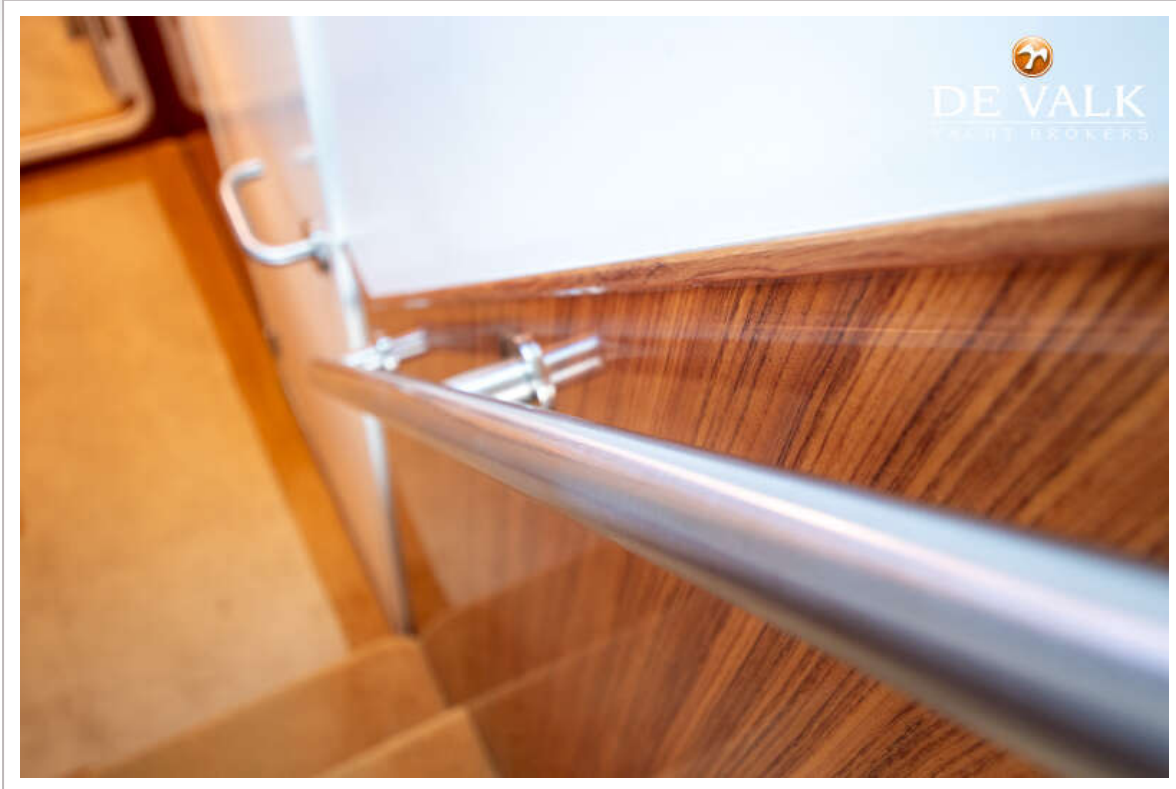




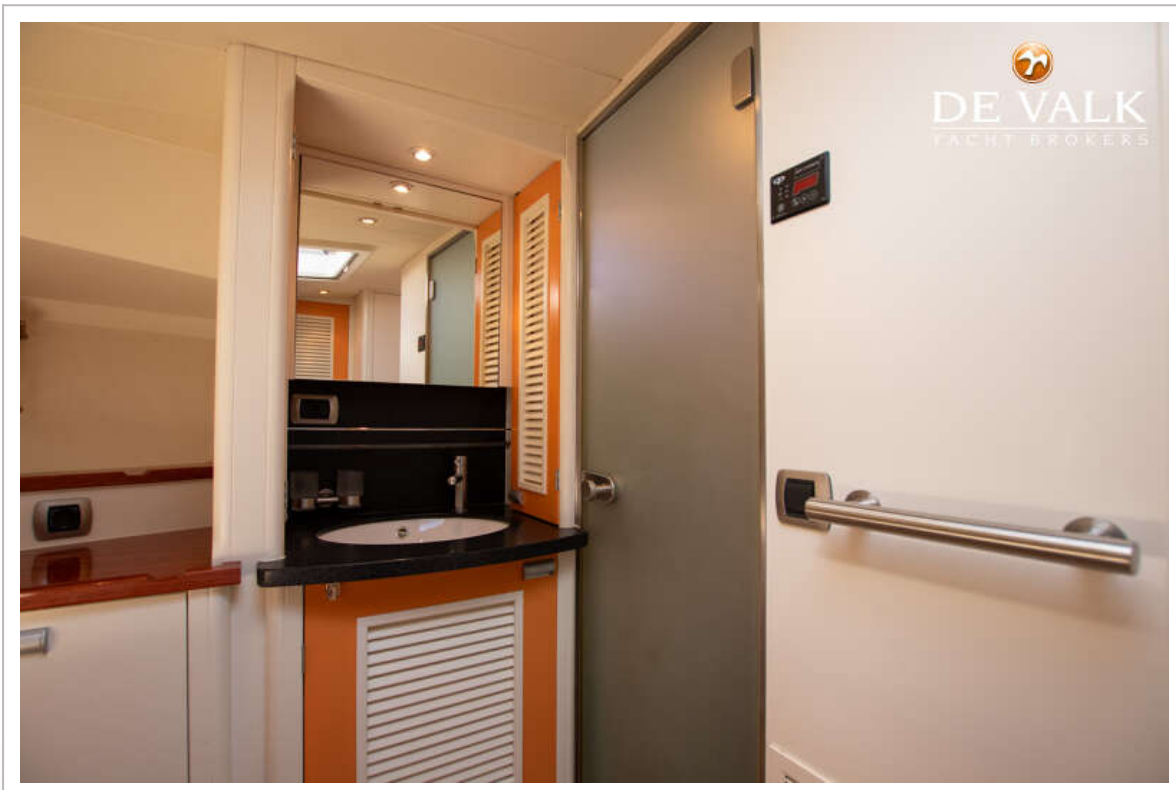
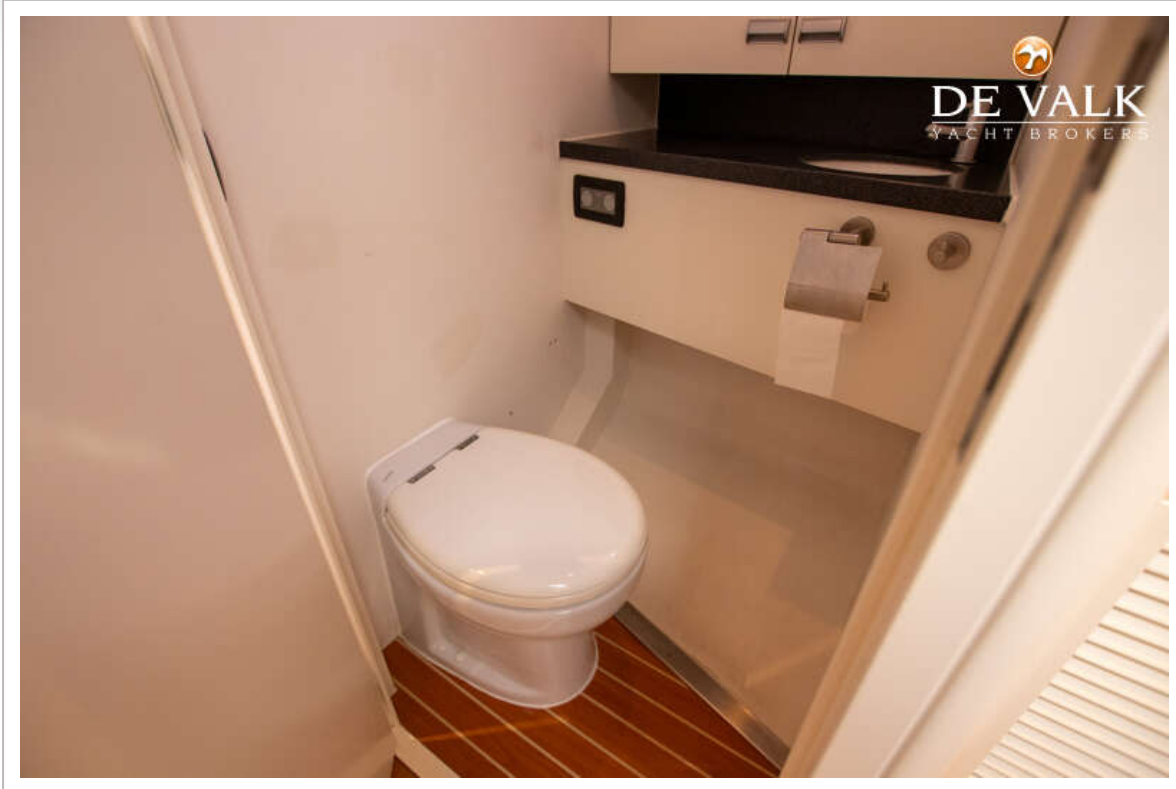
# GUARDIAN 50



# GUARDIAN 50

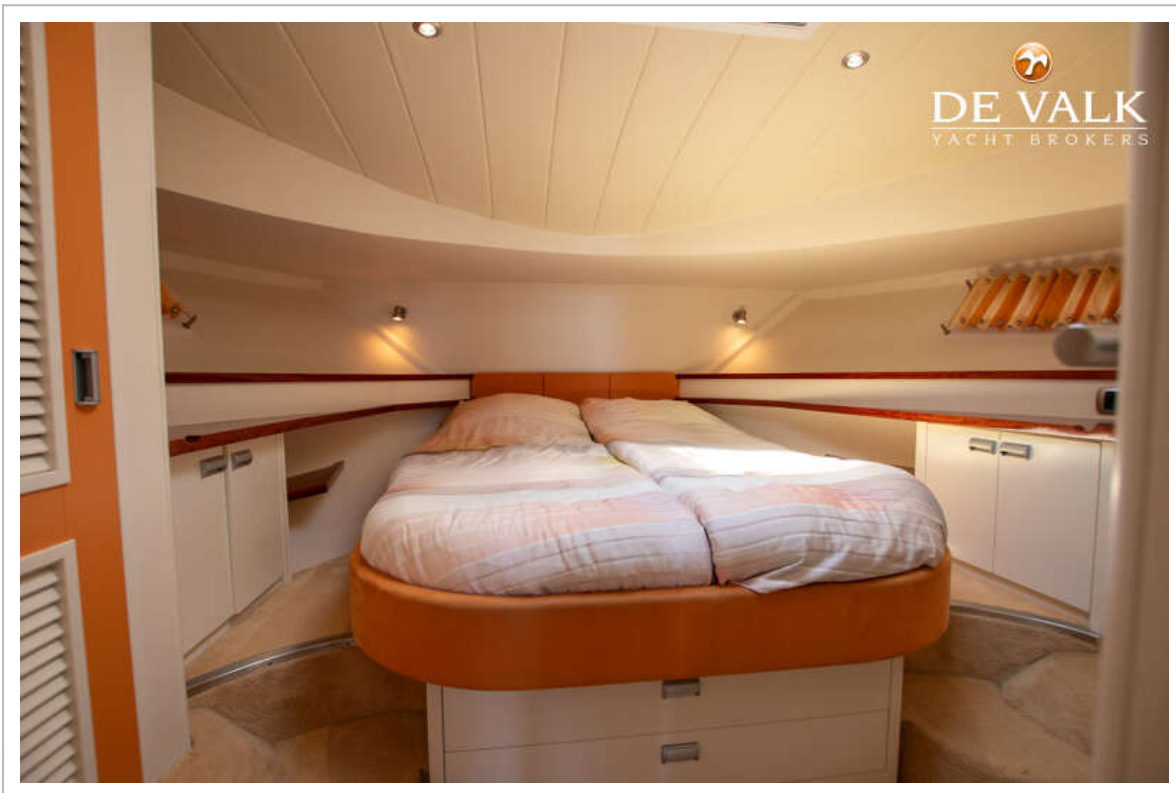


# GUARDIAN 50





# GUARDIAN 50

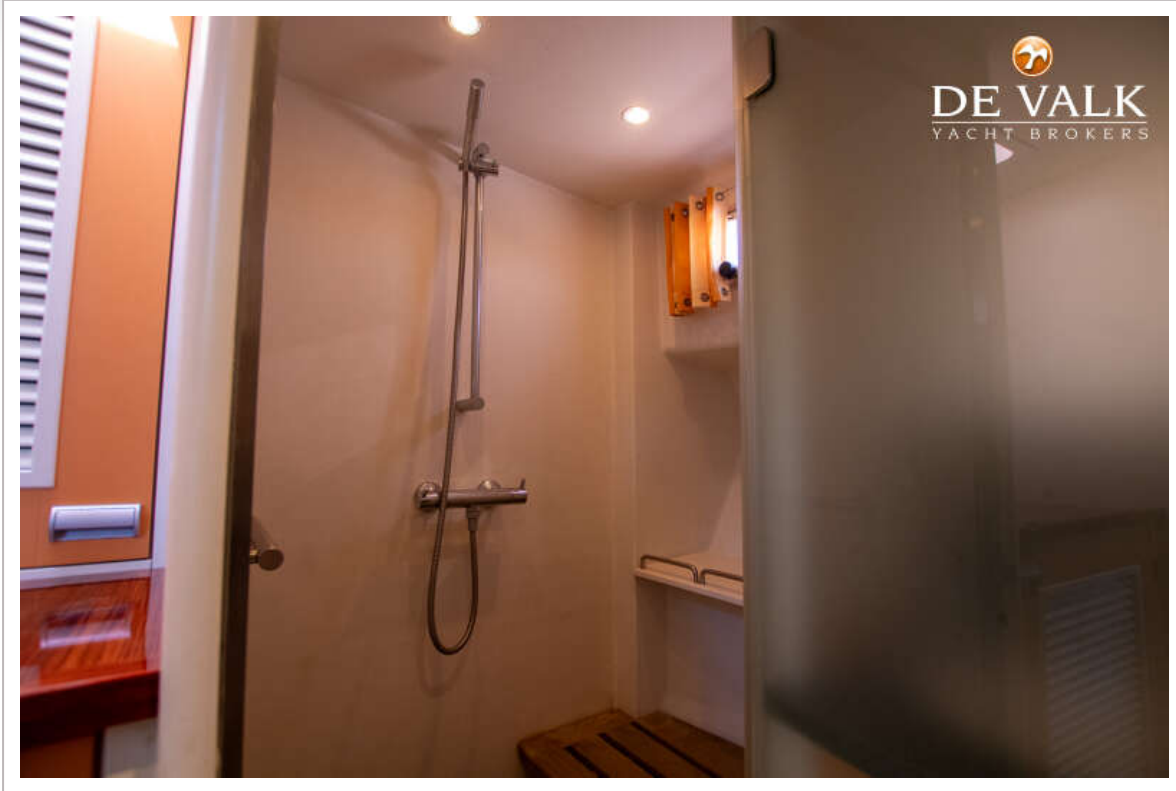




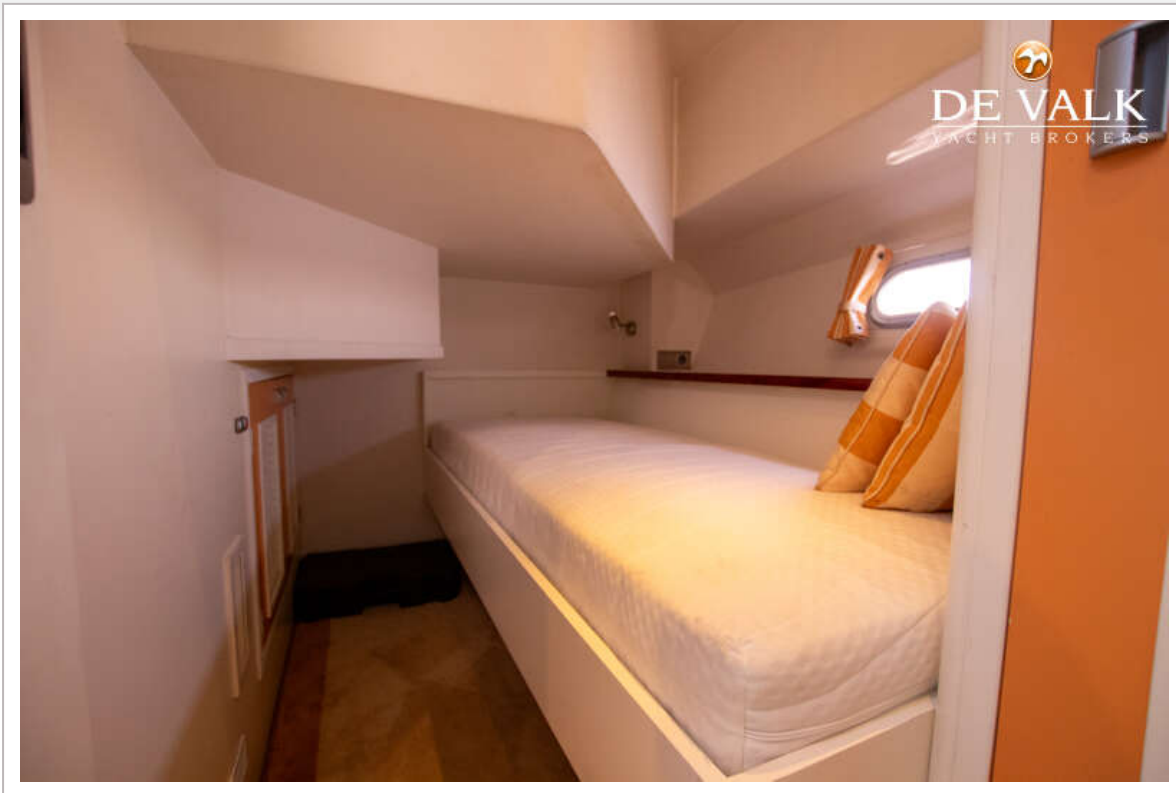
# GUARDIAN 50



# GUARDIAN 50

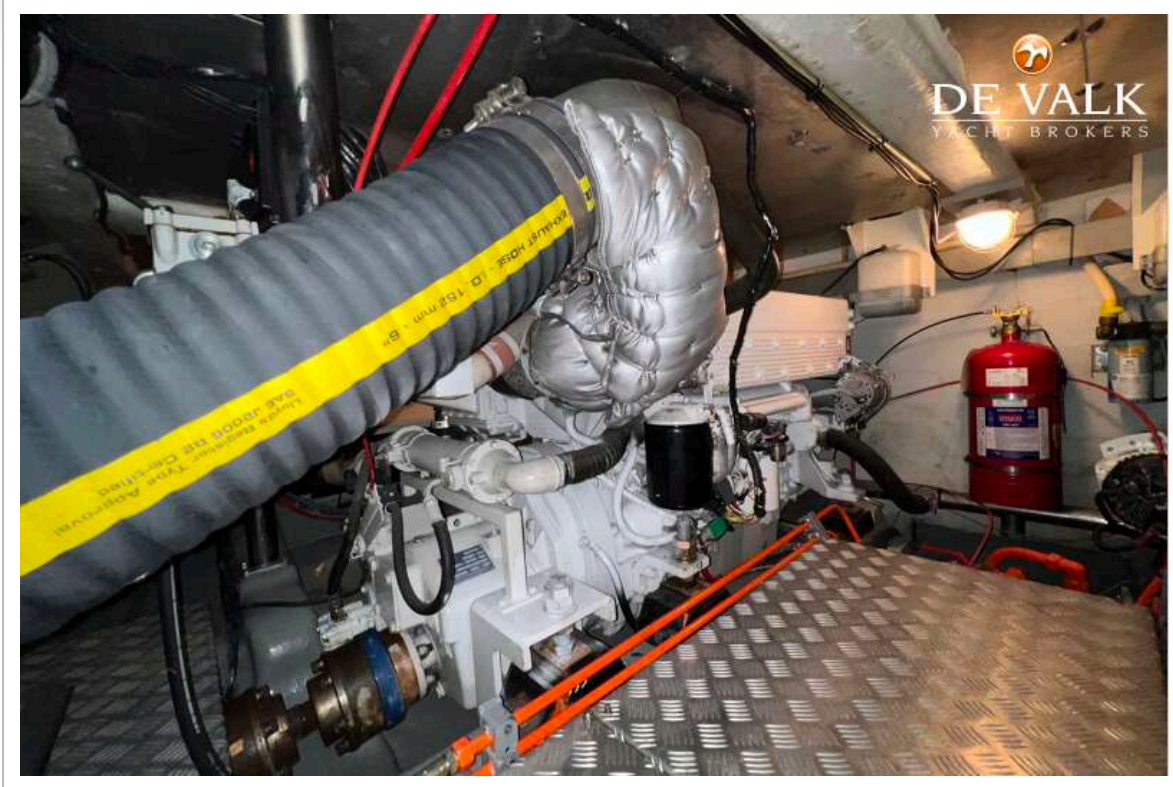


# GUARDIAN 50





# GUARDIAN 50



# GUARDIAN 50





# GUARDIAN 50

