



SUPER VAN CRAFT 1260

SUPER VAN CRAFT 1260

BROKER'S COMMENTS

Super van Craft 1260 AK. built 1978, 2 cabins and the possibility for 8 berths. A motor yacht in great condition, the current owner has invested a lot (2023-2024) to get the motor yacht in this condition. . . The Super van Craft 1260 is in our covered sales marina in Sneek where you are welcome seven days a week.

Henk de Vries

SPECIFICATIONS

Dimensions	13.20 x 3.85 x 1.35 (m)	Builder	Klaassen Voorschoten
Built	1978	Cabins	2
Material	Steel	Berths	8
Engine(s)	2 x DAF 575 diesel	Hp/Kw	2 x 105.00 (hp), 77.28 (kw)
Asking price	€ 149.000 (VAT Paid)	Lying	at sales office

CONTACT

Sales office	De Valk Sneek	Telephone	+31 515 42 80 30
Address	Zwolsmanweg 7 8606 KC Sneek The Netherlands	E-mail	sneek@devalk.nl

DISCLAIMER

These particulars are given in good faith as supplied but cannot be guaranteed.



SUPER VAN CRAFT 1260

GENERAL

Model	SUPER VAN CRAFT 1260
Type	motor yacht
LOA (m)	13,20
Beam (m)	3,85
Draft (m)	1,35
Air draft (m)	3,50
Air draft min (m)	2,60
Headroom (m)	1,93
Year built	1978
Builder	Klaassen Voorschoten
Country	The Netherlands
Designer	Klaassen Voorschoten
Displacement (t)	19
Hull material	steel
Hull colour	white
Hull thickness (mm)	5
Hull shape	round-bilged
Keel type	box keel
Superstructure material	steel
Superstructure (mm)	4
Deck plate thickness (mm)	4
Rubbing strake	stainless steel
Deck material	steel
Deck finish	teak
Superstructure deck finish	teak
Cockpit deck finish	teak
Antifouling (year)	2024
Window frame	aluminium
Window material	glass
Portholes	yes



SUPER VAN CRAFT 1260

Insulation	rockwool
Mast can be lowered	manual
Fuel tank (litre)	steel 1.000
Level indicator (fuel tank)	VDO
Freshwater tank (litre)	stainless steel 800
Level indicator (freshwater)	VDO
Wheel steering	chain steering
Inside helm position	yes
Outside helm position	chain steering
More info on paintwork	Hull and superstructure painted in 2023 (2 comp.)
Extra info	Superstructure: varnished, 14 layers 2 components 2024 (outside)
Extra info	Varnished, 8 layers 2 components (2024) inside

ACCOMMODATION

Cabins	2
Berths	8
Interior	mahogany
Floor	carpet
Aft deck	yes
Saloon	yes
Headroom saloon (m)	1,93
Sliding roof	manual
Heating	diesel ducted hot air Eberspacher
Aft Cabin	yes
Dinette to convert into berth	yes
Opening door to aft deck	yes
Galley	yes
Countertop	wood Mahogany
Sink	stainless steel
Cooker	calor gas 3-pits



SUPER VAN CRAFT 1260

Oven	Moonlight Three
Fridge	yes
Hot water system	220V 60 ltr. dieselboiler (refit 2024) &
Water pressure system	electrical
Owners cabin	twin single
Bed length (m)	2,00 x 0,90
Wardrobe	hanging and shelves
Bathroom	en suite
Toilet	en suite
Toilet system	electric
Wash basin	in the bathroom
Shower	en suite
Guest cabin 1	twin single
Bed length (m)	1,90 x 0,70
Wardrobe	hanging and shelves
Bathroom	en suite
Toilet	en suite 2024
Toilet system	electric
Wash basin	at the toilet
Shower	en suite

MACHINERY

No of engines	2
Make	DAF
Type	575
HP	105
kW	77.28
Fuel	diesel
Year of overhaul	400 hours since overhaul 2020
Maximum speed (kn)	8
Cruising speed (kn)	7



SUPER VAN CRAFT 1260

Engine hours	400
Engine cooling system	freshwater heat exchanger
Drive	shaft
Shaft seal	yes
Engine controls	bowden cable
Gearbox	hydraulic
Bowthruster	hydraulic
Sternthruster	hydraulic
Gearbox	hydraulic
Exhaust	watercooled
Thrust bearing	yes
Propeller type	fixed
Propeller blades	4
Propeller shaft material	stainless steel
Shaft lubrication	grease
Electric bilge pump	yes
Electrical installation	24V / 220V
Generator	silent separator Fisher Panda serviced 2023
Batteries	7
Start battery	2x
Service battery	4x
Generator battery	1x
Battery monitor	Victron
Battery charger/inverter	Victron 24/ 3000/ 70
Shorepower	with cable

NAVIGATION

Compass	yes
VHF handheld	Icom-IC M35
Rudder angle indicator	VDO
Navigation lights	yes



SUPER VAN CRAFT 1260

Searchlight yes

EQUIPMENT

Fixed windscreen	yes
Sprayhood	yes
Dodger	yes
Bimini	yes
Cockpit cushions	yes
Cockpit table	Original SvC
Cockpit chairs	yes
Bathing platform	yes
Boarding ladder	stainless steel
Deck shower	yes
Anchor	Pool
Anchor chain	yes
Windlass	electrical Neco Marine Ltd
Deck wash	Warm & cold
Davits	steel
Davits controls	manual
Sea railing	yes
Grab rail (superstructure)	yes
Railing side opening gates	yes
Wiper	2x
Horn	electric
Fenders	yes
Mooring lines	yes
TV	LG
TV receiver	DigiTenne
Radio	Kenwood
Cockpit speakers	yes
Speakers in salon	yes



Clock - barometer

yes



SUPER VAN CRAFT 1260



SUPER VAN CRAFT 1260



SUPER VAN CRAFT 1260



SUPER VAN CRAFT 1260



SUPER VAN CRAFT 1260



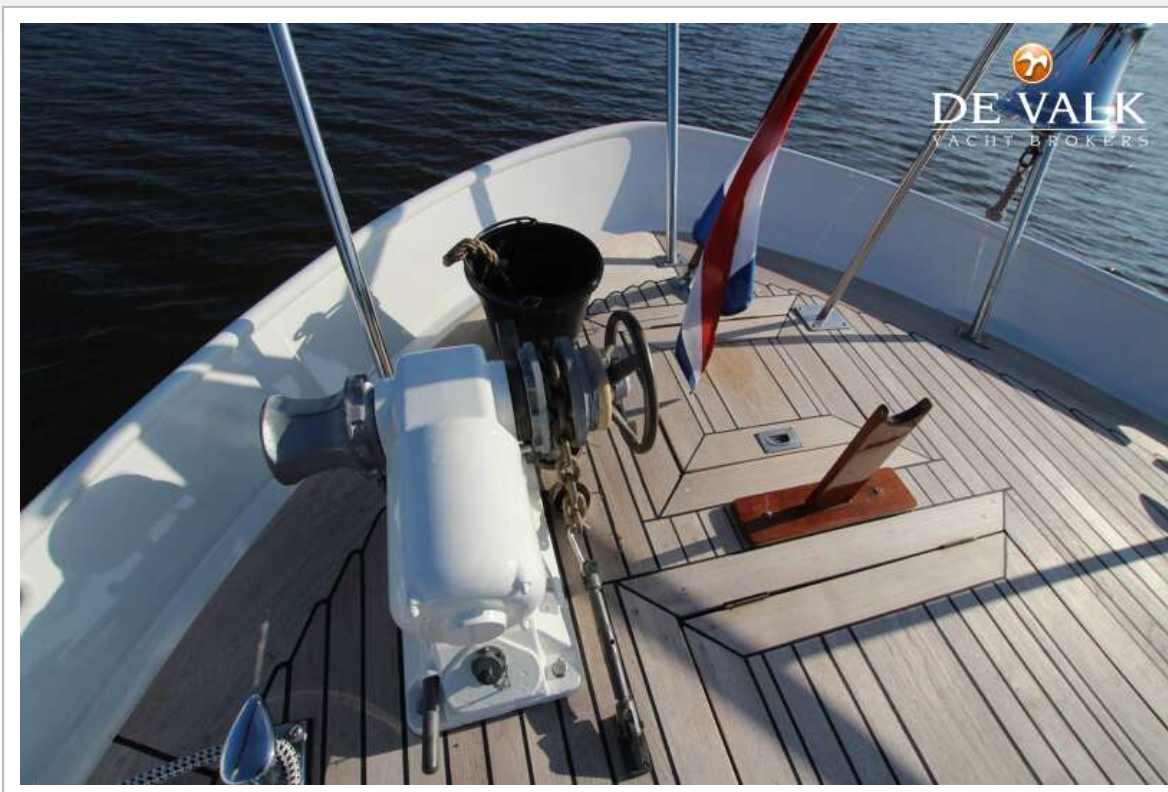
SUPER VAN CRAFT 1260



SUPER VAN CRAFT 1260



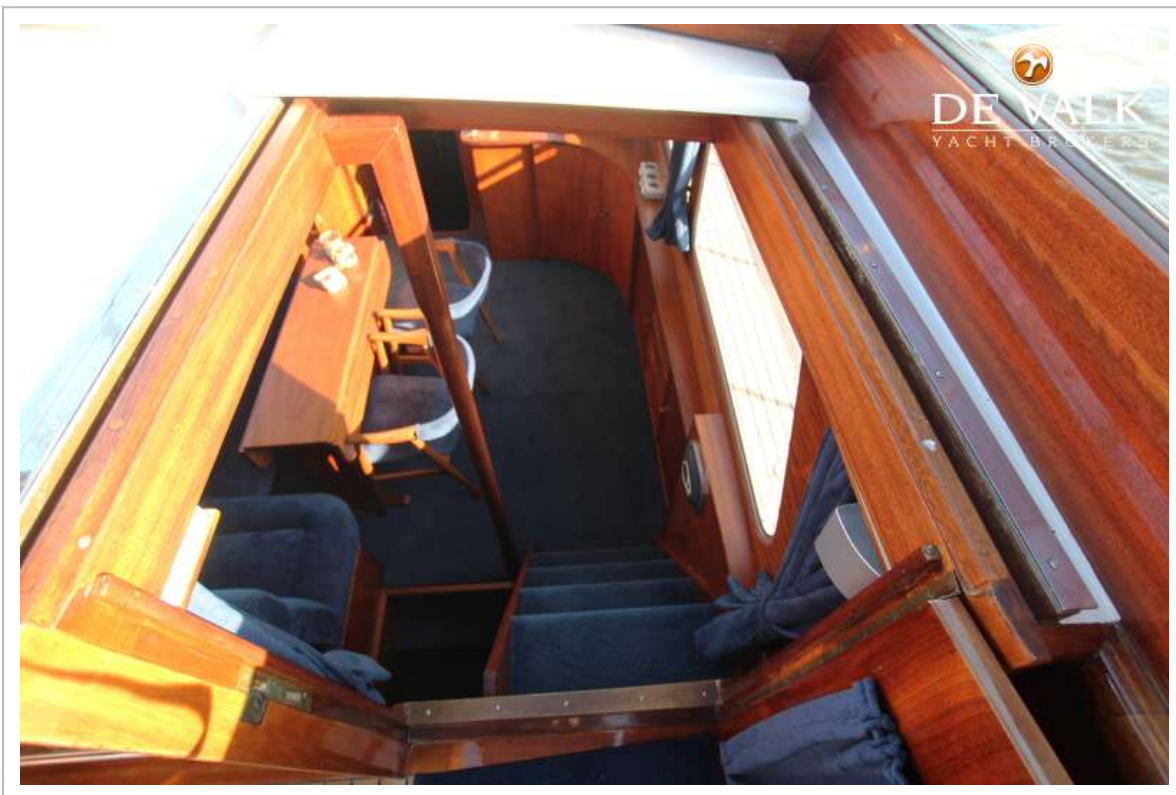
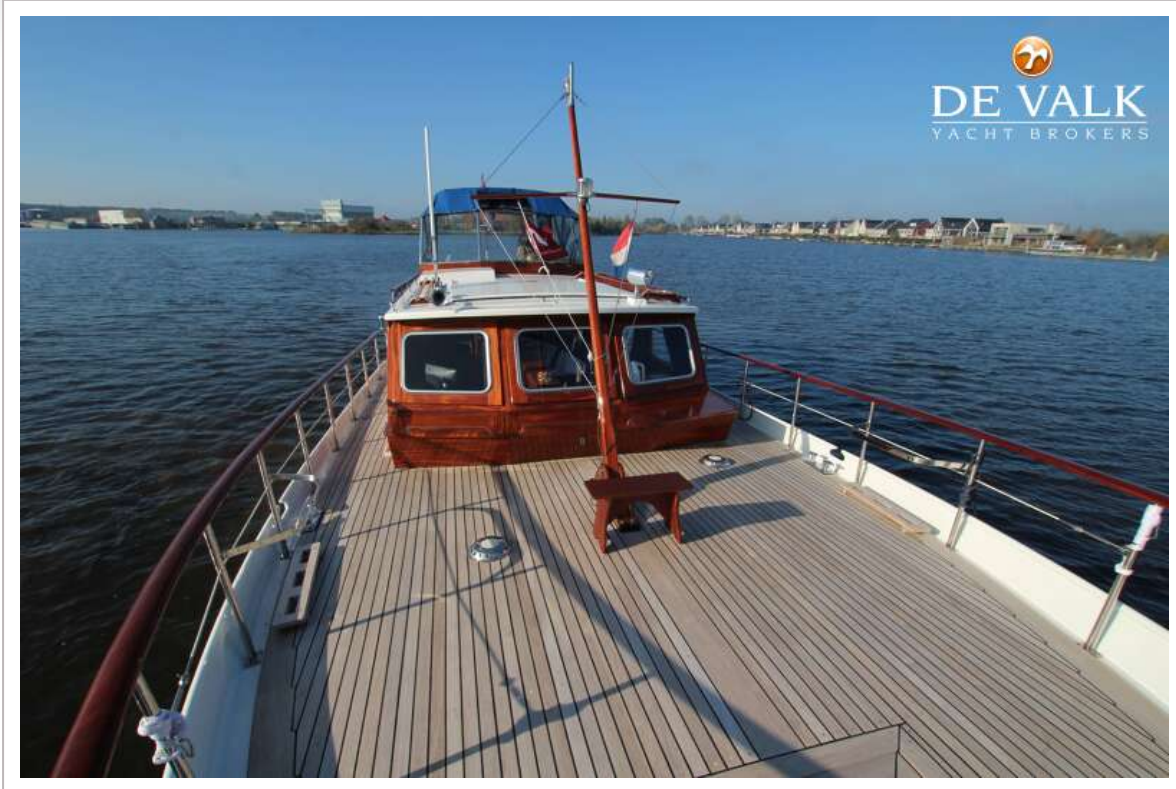
SUPER VAN CRAFT 1260



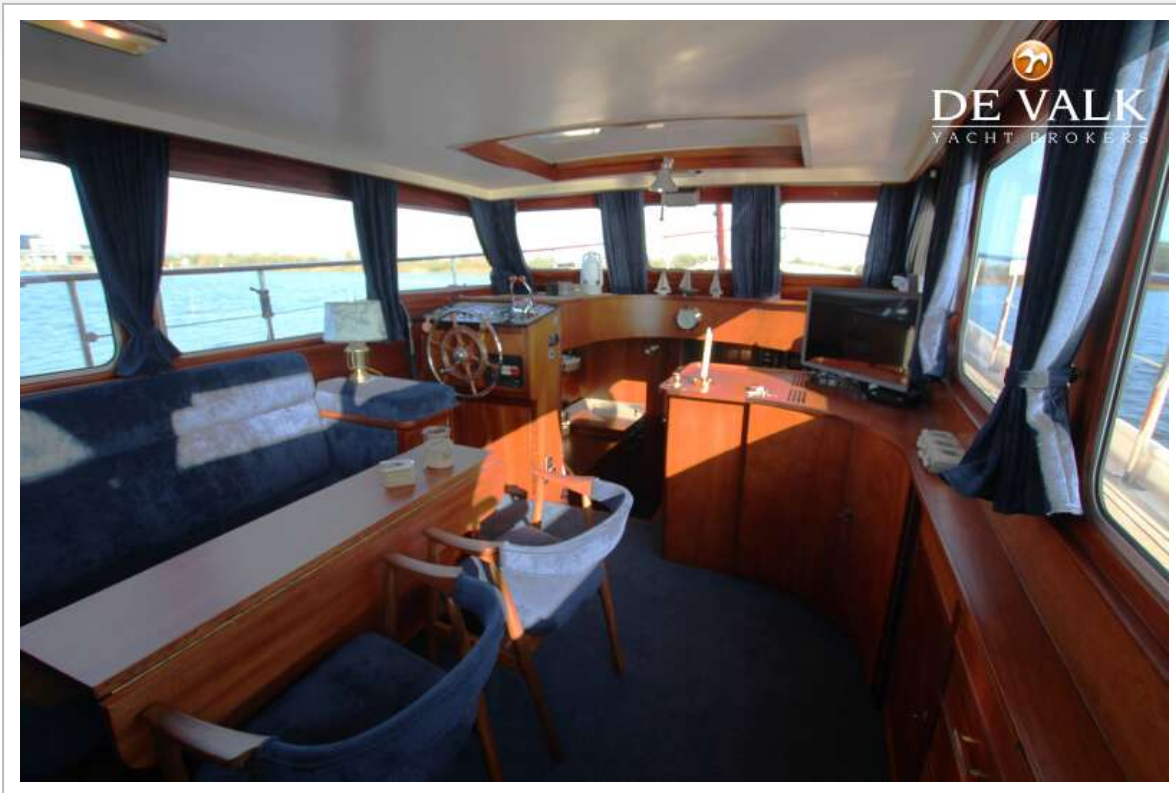
SUPER VAN CRAFT 1260



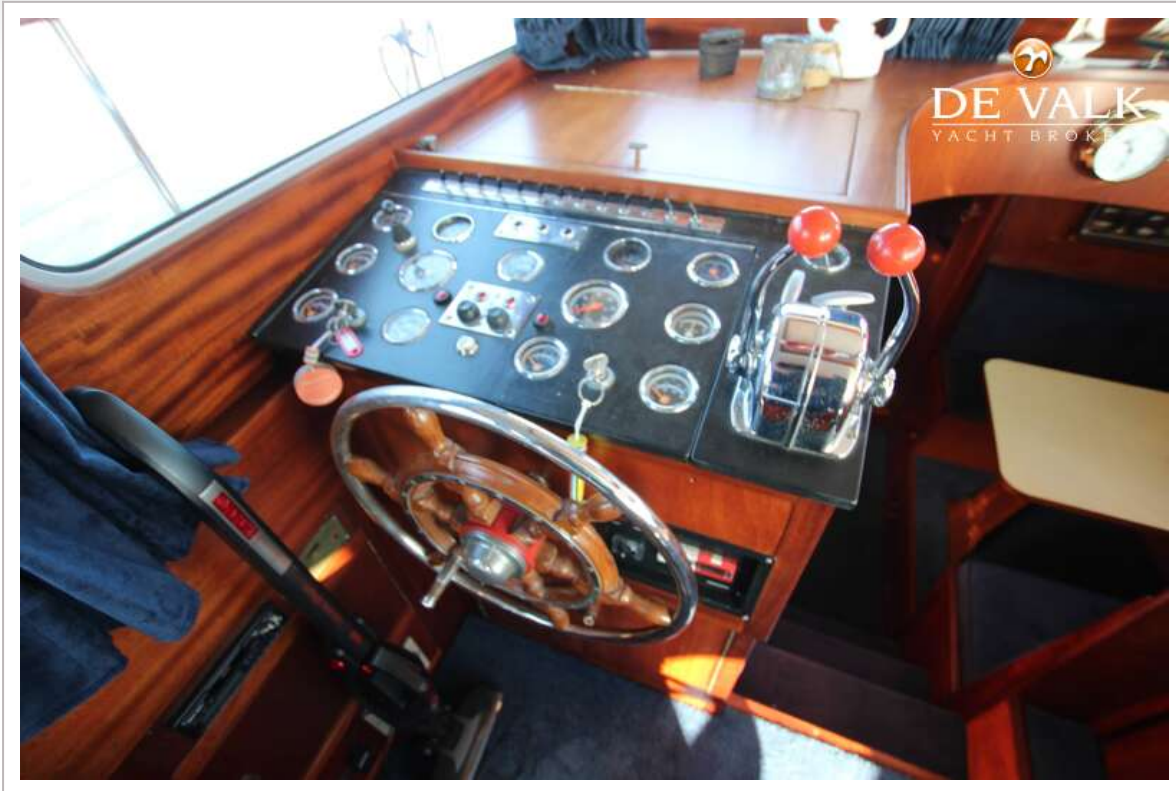
SUPER VAN CRAFT 1260



SUPER VAN CRAFT 1260



SUPER VAN CRAFT 1260



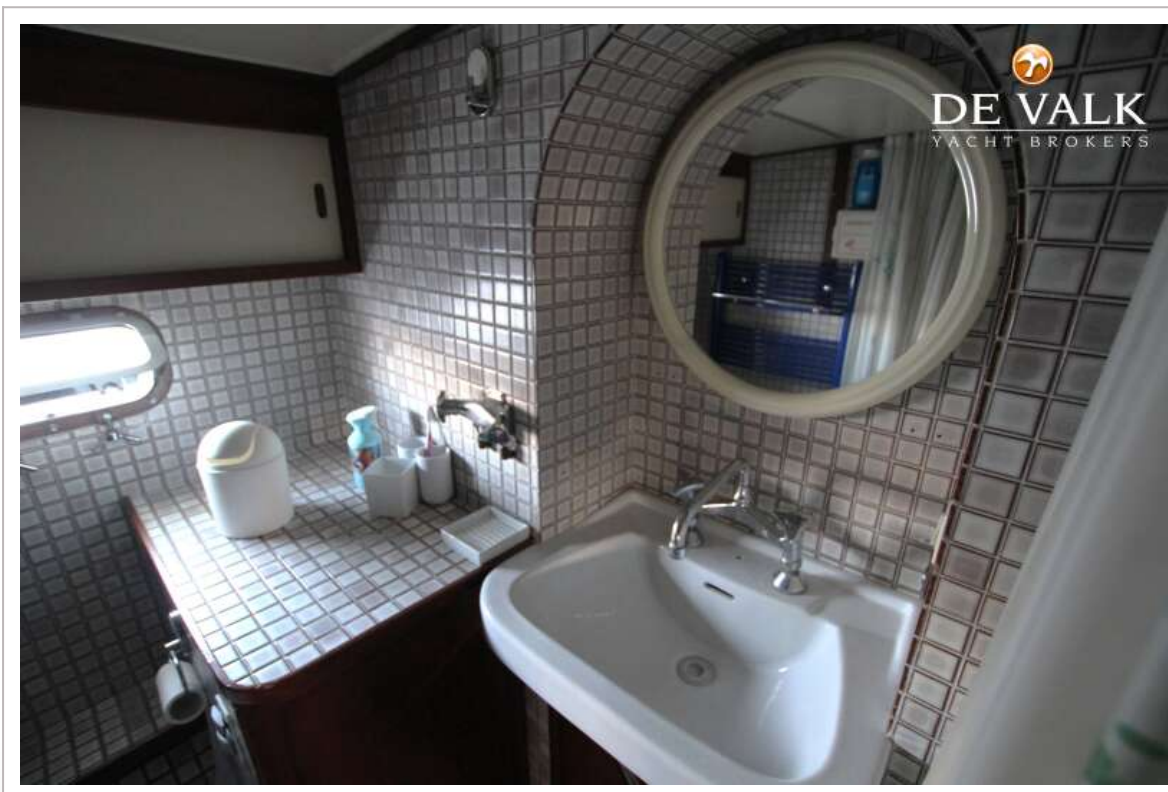
SUPER VAN CRAFT 1260



SUPER VAN CRAFT 1260



SUPER VAN CRAFT 1260



SUPER VAN CRAFT 1260

