



DE VALK
YACHT BROKERS



SILVERLINE 1350



DE VALK
YACHT BROKERS

SILVERLINE 1350

BROKER'S COMMENTS

This beautifully lined Silverline 1350 "Charlie" with a CE-B certificate has a powerful 210 Hp Perkins on board and looks like new, a real eye-catcher on the water, and has fantastic sailing characteristics. With airco, generator, Cv heating, double glazing, bow/ stern thruster and two sleeping cabins, this ship is very suitable for long stays on board. Are you interested or are you curious to view this ship, please come and inspect her in our salesmarina in Sneek.

Pieter Bosma

SPECIFICATIONS

Dimensions	13.65 x 4.25 x 1.25 (m)	Builder	Silverline Yachts Uitwellingerga
Built	2003	Cabins	2
Material	Steel	Berths	4
Engine(s)	1 x Perkins M225TI diesel	Hp/Kw	210.00 (hp), 154.56 (kw)
Asking price	€ 389.000 (VAT Paid)	Lying	at sales office

CONTACT

Sales office	De Valk Sneek	Telephone	+31 515 42 80 30
Address	Zwolsmanweg 7 8606 KC Sneek The Netherlands	E-mail	sneek@devalk.nl

DISCLAIMER

These particulars are given in good faith as supplied but cannot be guaranteed.



SILVERLINE 1350

GENERAL

Model	SILVERLINE 1350
Type	motor yacht
LOA (m)	13,65
Beam (m)	4,25
Draft (m)	1,25
Air draft (m)	4,75
Air draft min (m)	2,90
Headroom (m)	2,05
Year built	2003
Builder	Silverline Yachts Uitwellingergera
Country	The Netherlands
Designer	Vripack Yachting International
Displacement (t)	19,5
CE norm	B
Hull material	steel
Hull colour	blue
Hull shape	round-bilged
Keel type	long keel
Bilge keels	yes
Superstructure material	steel
Rubbing strake	stainless steel
Deck material	steel
Deck finish	teak
Superstructure deck finish	paint
Cockpit deck finish	teak
Dorades	yes
Window frame	aluminium
Window material	double glazing
Deckhatch	yes
Portholes	aluminium



SILVERLINE 1350

Insulation	foam
Mast can be lowered	hydraulic
Fuel tank (litre)	steel 750 Ltr
Fuel tank 2 (litre)	steel 750 Ltr
Level indicator (fuel tank)	yes
Freshwater tank (litre)	stainless steel 1000 Ltr
Level indicator (freshwater)	(defect)
Blackwater tank (litre)	stainless steel 550 Ltr
Level indicator (blackwater)	yes
Wheel steering	hydraulic
Inside helm position	yes
Emergency tiller	yes
More info on paintwork	repainted 2015

ACCOMMODATION

Cabins	2
Berths	4
Interior	cherry
Floor	teak and holly
Open cockpit	yes
Saloon	yes
Headroom saloon (m)	1,95 mtr
Heating	central heating Kabola B12 tap
Air-conditioning	reverse cycle airco
Dinette	yes
Dinette to convert into berth	yes
Galley	yes
Countertop	corian Blue
Sink	corian 2x
Cooker	electric 4 burner Siemens
Extractor	yes



SILVERLINE 1350

Microwave	Inventum 2023
Fridge	104 Ltr /50 Ltr
Freezer	in aft storage
Hot water system	on central heating
Water pressure system	electrical
Owners cabin	French bed
Bed length (m)	2,15 x 1,60 mtr
Wardrobe	hanging and shelves
Bathroom	en suite
Toilet	en suite
Toilet system	electric Tecma
Wash basin	at the toilet
Shower	en suite
Guest cabin 1	double bed
Bed length (m)	1,95 x 1,50 mtr
Wardrobe	hanging and drawers
Washing machine	Candy Aquamatic 10T

MACHINERY

No of engines	1
Make	Perkins
Type	M225TI
HP	210
kW	154.56
Fuel	diesel
Engine hours	2569
Engine cooling system	freshwater heat exchanger
Drive	shaft
Shaft seal	yes
Engine controls	electrical Morse
Gearbox	hydraulic



SILVERLINE 1350

Bowthruster	electric Cupa 90
Sternthruster	electric Cupa 90
Thrust bearing	yes
Propeller type	fixed
Propeller blades	5
Propeller shaft material	stainless steel
Shaft lubrication	water
Electric bilge pump	yes
Electrical installation	12/24/220V
Generator	wet exhaust Whisper 6000
Batteries	yes
Start battery	2z 50 Amp
Service battery	4x 240 Amp (2021)
Generator battery	1x 50 Amp (2022)
Bowthruster battery	2x 200 Amp
Sternthruster battery	4x 50 Amp Redtop
Battery monitor	yes
Battery charger	24/75 Mastervolt
Inverter	12/1500 Mastervolt (2022)
Diode battery combiners	yes
Shorepower	with cable

NAVIGATION

Electric compass	In plotter
Depth sounder/log	Raymarine I70S (2018)
VHF	Raymarine (2018)
Autopilot	Raymarine
Radar	Raymarine Quantum
Radar/GPS/plotter	Raymarine Axiom (2018/2021)
Wifi antenna	yes
AIS transponder	yes



Navigation lights	yes
Searchlight	remote controlled

EQUIPMENT

Cockpit cover	yes
Cockpit cushions	yes
Cockpit table	yes
Bathing platform	yes
Boarding ladder	yes
Transom door	2x
Deck shower	yes
Anchor	Pool
Anchor chain	Stainless steel
Windlass	electrical Lofrans1200 W
Deck wash	yes
Sea railing	stainless steel
Grab rail (superstructure)	stainless steel
Railing side opening gates	2x
Life raft	SeaSafe
Last life raft survey	2019
Wiper	3x
Horn	electric
Radar reflector	yes
Fenders	yes
Mooring lines	yes
TV	LC on lift
Radio-cd player	Pioneer
Speakers in salon	Kenwood
Clock - barometer	yes
Fire extinguisher	2x
Auto extinguisher system	yes





SILVERLINE 1350



SILVERLINE 1350



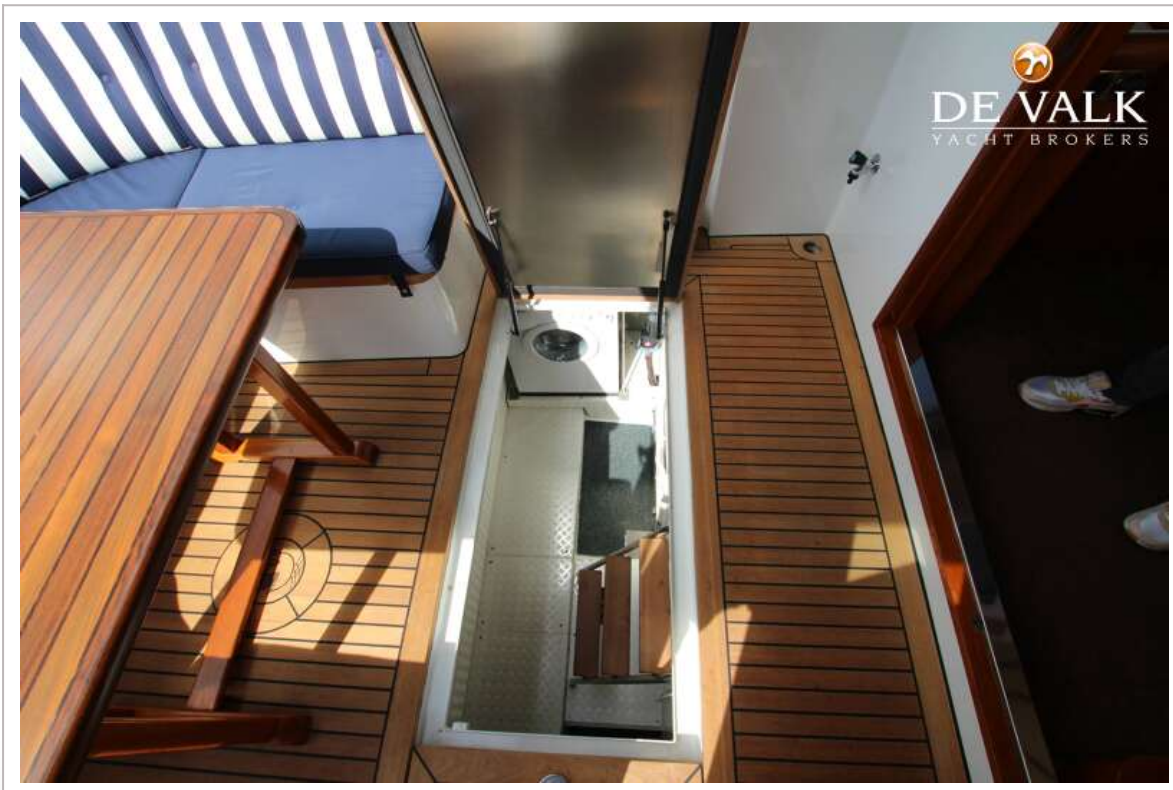
SILVERLINE 1350



SILVERLINE 1350



SILVERLINE 1350



SILVERLINE 1350



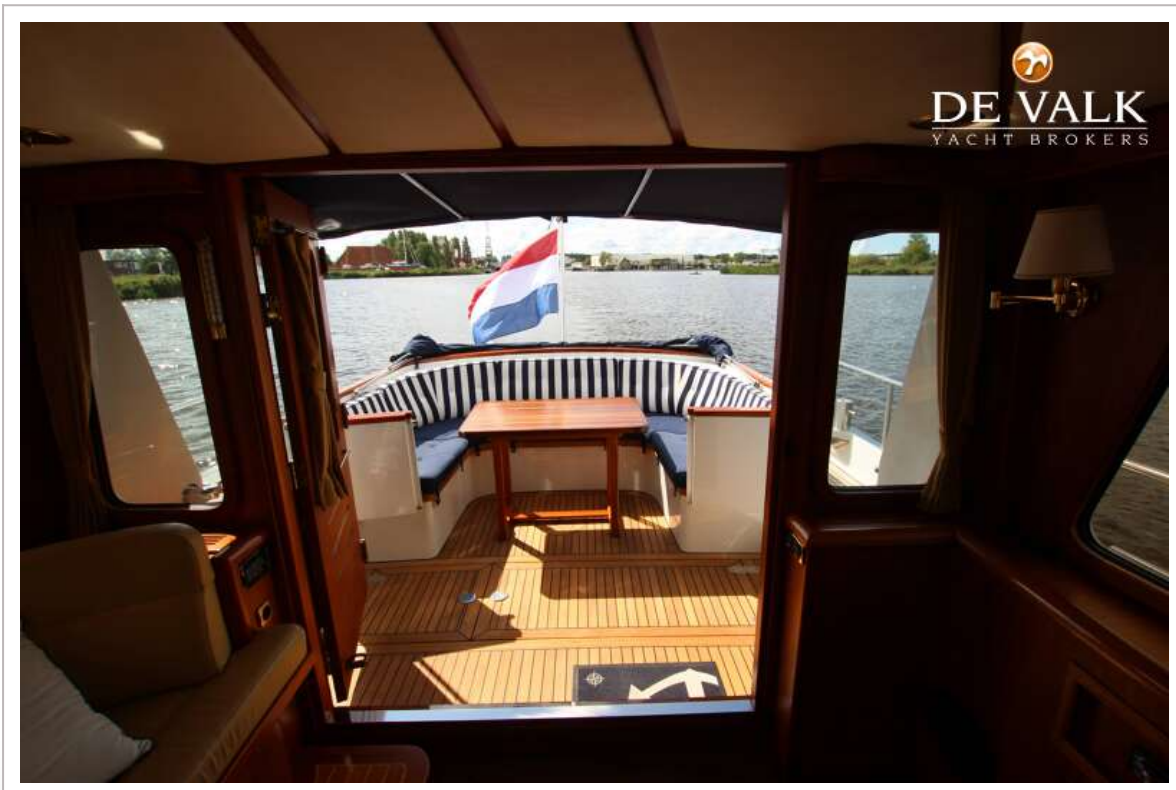
SILVERLINE 1350



SILVERLINE 1350



SILVERLINE 1350



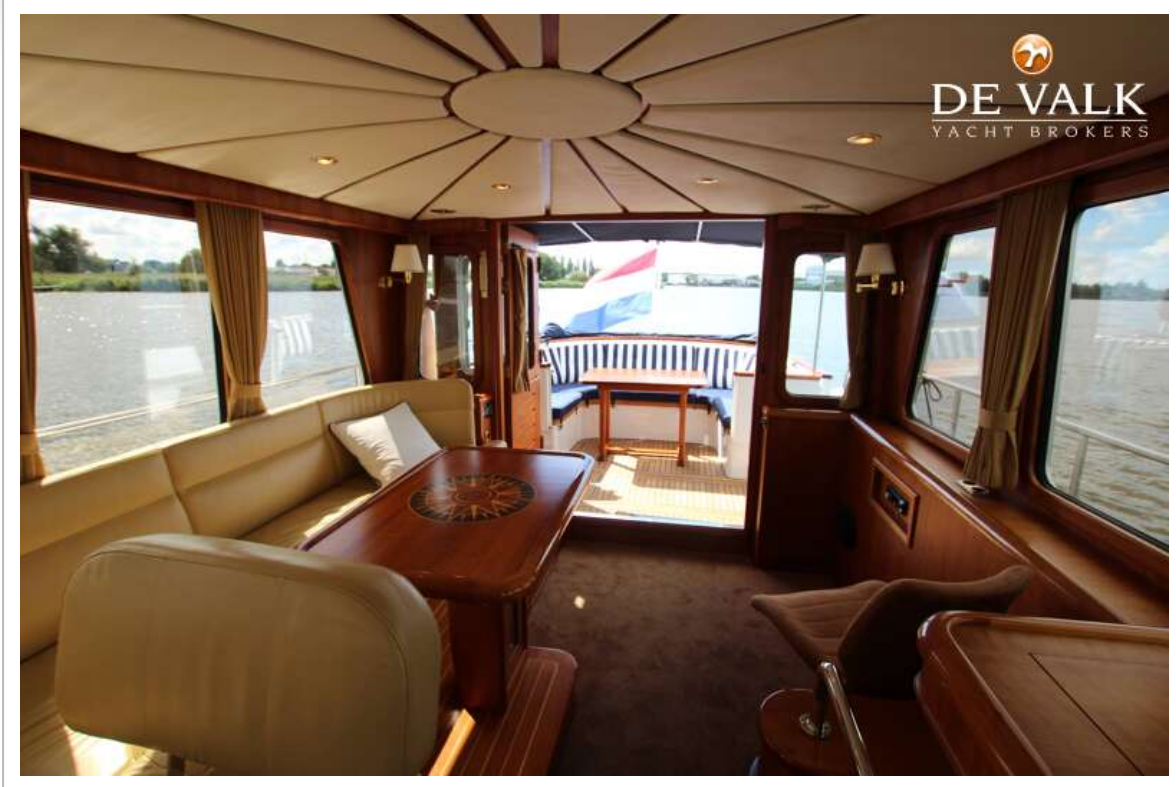
SILVERLINE 1350



SILVERLINE 1350



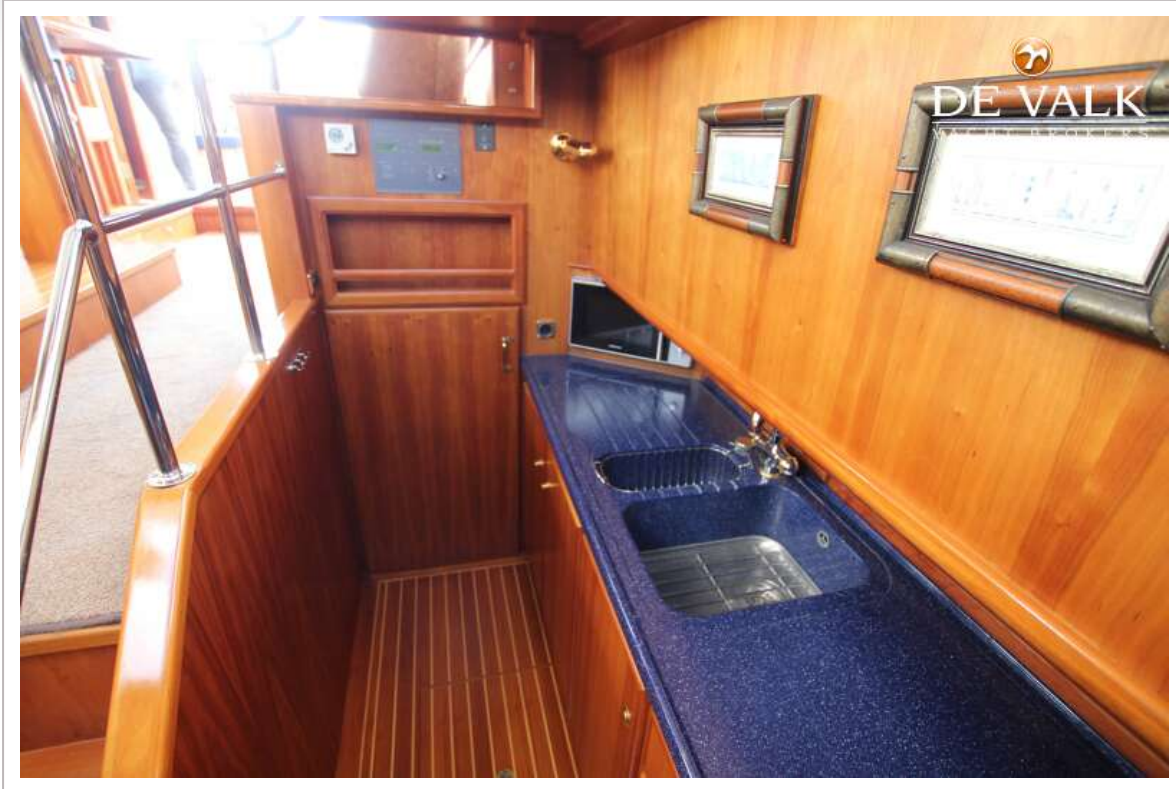
SILVERLINE 1350



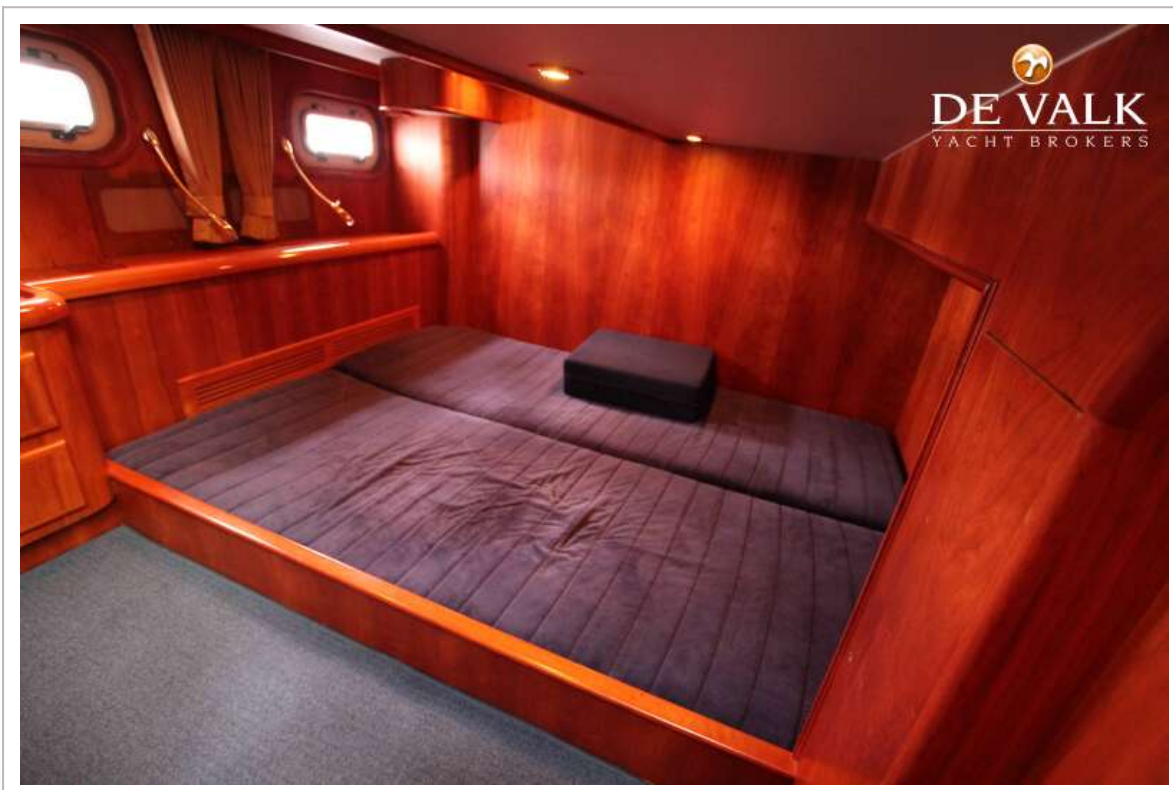
SILVERLINE 1350



SILVERLINE 1350



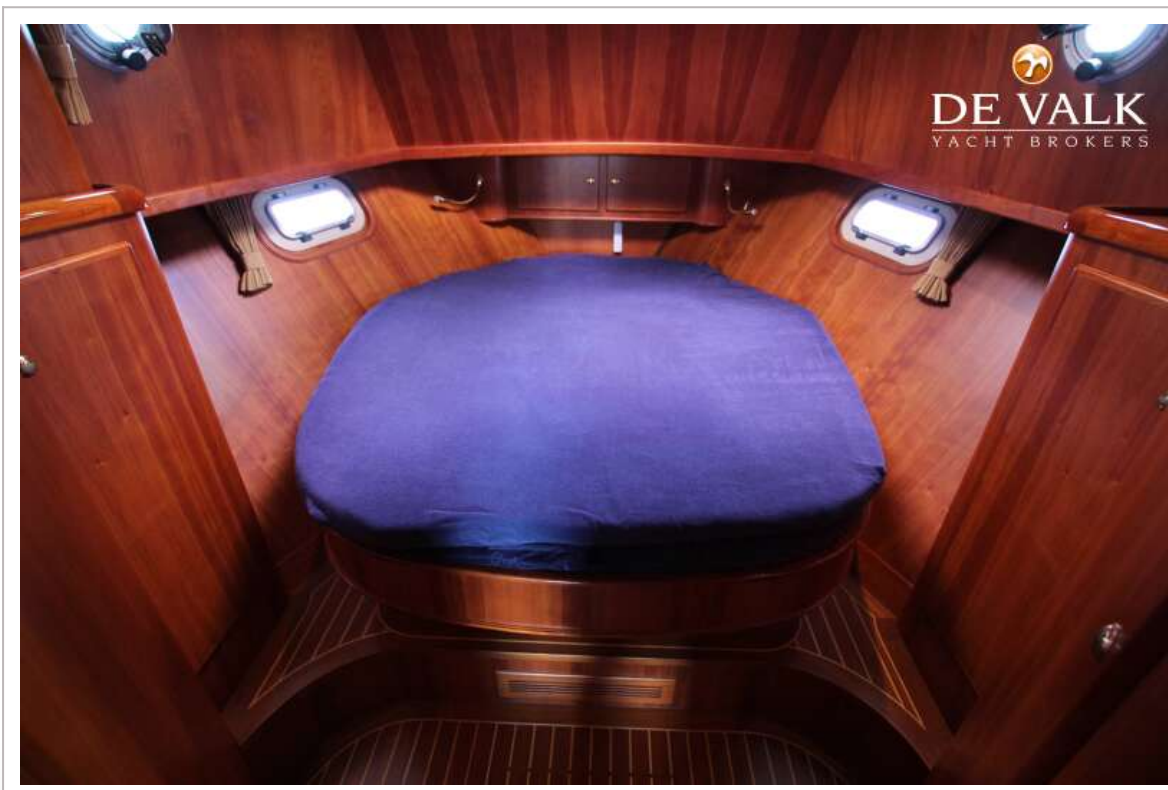
SILVERLINE 1350



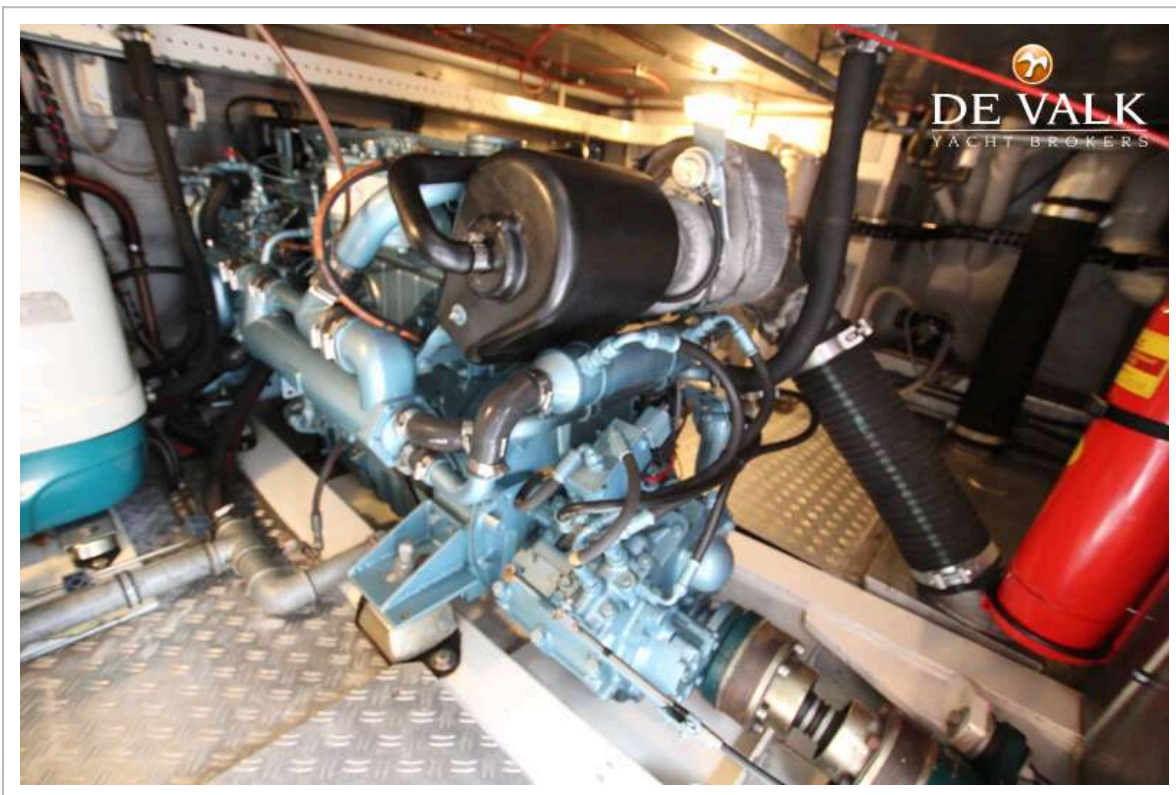
SILVERLINE 1350



SILVERLINE 1350



SILVERLINE 1350



SILVERLINE 1350



