



DE VALK  
YACHT BROKERS



## RODMAN MUSE 74



DE VALK  
YACHT BROKERS

# RODMAN MUSE 74

## BROKER'S COMMENTS

"Rodman Muse 74," constructed in 2012 and owned by its original proprietor, remains in exceptional condition with excellent maintenance. The yacht's 450 engine hours have been accumulated through trial sails with potential buyers, ensuring the engines are well-tested. The interior, crafted from the finest oak wood and premium materials, accommodates 8 guests across 4 cabins and 3 crew members in 2 cabins. Having only been used for demonstrations, the yacht is essentially "as new." "Rodman Muse 74" is ready to sail and eager to take you to the most beautiful spots on the water in pure luxury.

*Henk Jan Vissia*

## SPECIFICATIONS

<b>Dimensions</b>	23.16 x 5.67 x 1,16 / 1.78 (m)	<b>Builder</b>	Rodman Polyships S.A.U.
<b>Built</b>	2012	<b>Cabins</b>	4
<b>Material</b>	GRP	<b>Berths</b>	6
<b>Engine(s)</b>	2 x MAN D2 842 LE 433 diesel	<b>Hp/Kw</b>	2 x 1,550.00 (hp), 1,140.80 (kw)
<b>Asking price</b>	€ 1.990.000 (VAT Not paid)	<b>Lying</b>	Spain

## CONTACT

<b>Sales office</b>	De Valk Sneek	<b>Telephone</b>	+31 515 42 80 30
<b>Address</b>	Zwolsmanweg 7 8606 KC Sneek The Netherlands	<b>E-mail</b>	sneek@devalk.nl

## DISCLAIMER

These particulars are given in good faith as supplied but cannot be guaranteed.



# RODMAN MUSE 74

## GENERAL

<b>Model</b>	RODMAN MUSE 74
<b>Type</b>	motor yacht
<b>LOA (m)</b>	23,16
<b>LWL (m)</b>	18,51
<b>Beam (m)</b>	5,67
<b>Draft (m)</b>	1,78
<b>Draft min (m)</b>	1,16
<b>Year built</b>	2012
<b>Builder</b>	Rodman Polyships S.A.U.
<b>Country</b>	Spain
<b>Designer</b>	Fulvio de Simoni
<b>Displacement (t)</b>	45
<b>Hull material</b>	GRP
<b>Hull colour</b>	off-white
<b>Hull shape</b>	deep-V
<b>Superstructure material</b>	GRP
<b>Deck material</b>	GRP
<b>Deck finish</b>	teak
<b>Cockpit deck finish</b>	teak
<b>Window material</b>	tempered glass
<b>Portholes</b>	stainless steel
<b>Flybridge</b>	yes
<b>Flybridge suncover</b>	yes
<b>Radar arch</b>	non collapsible
<b>Fuel tank (litre)</b>	aluminium 2706
<b>Fuel tank 2 (litre)</b>	aluminium 2706
<b>Level indicator (fuel tank)</b>	yes
<b>Freshwater tank (litre)</b>	aluminium 1308
<b>Level indicator (freshwater)</b>	yes
<b>Blackwater tank (litre)</b>	aluminium 466



Level indicator (blackwater)	yes
Greywater tank (litre)	aluminium 466
Level indicator (greywater)	yes
Wheel steering	hydraulic
Inside helm position	yes
Flybridge helm position	hydraulic

## ACCOMMODATION

Cabins	4
Berths	6
Crew cabin	2
Crew berths	3
Interior	oak
Floor	carpet
Saloon	yes
Air-conditioning	yes
Dining room	yes
Sliding door to cockpit	yes
Galley	yes
Countertop	Silestone
Sink	yes
Cooker	ceramic
Oven	yes
Extractor	yes
Microwave	yes
Fridge	yes
Freezer	yes
Dishwasher	yes
Owners cabin	double bed
Wardrobe	hanging/drawers/shelves
Bathroom	en suite



# RODMAN MUSE 74

Toilet system	vacuum
Shower	yes
Guest cabin 1	double bed
Wardrobe	hanging/drawers/shelves
Bathroom	en suite
Toilet system	vacuum
Shower	yes
Guest cabin 2	twin single
Wardrobe	hanging and drawers
Bathroom	en suite
Toilet system	vacuum
Shower	yes
Guest cabin 3	twin single
Wardrobe	hanging and drawers
Bathroom	en suite
Toilet system	vacuum
Shower	yes
Crew cabin(s)	2
Bathroom (crew)	1
Toilet (crew)	1
Toilet system	vacuum
Wash basin	in the bathroom
Washing machine	yes

## MACHINERY

No of engines	2
Make	MAN
Type	D2 842 LE 433
HP	1550
kW	1140.80
Fuel	diesel



# RODMAN MUSE 74

<b>Year installed</b>	2012
<b>Maximum speed (kn)</b>	30
<b>Cruising speed (kn)</b>	25
<b>Engine hours</b>	450
<b>Engine cooling system</b>	freshwater heat exchanger
<b>Drive</b>	shaft
<b>Bowthruster</b>	electric
<b>Propeller shaft material</b>	stainless steel
<b>Electric bilge pump</b>	yes
<b>Bilge alarm</b>	yes
<b>Generator</b>	yes
<b>Start battery</b>	2x 200 Ah
<b>Service battery</b>	800 Ah
<b>Generator battery</b>	200 Ah
<b>Bowthruster battery</b>	150 Ah
<b>Battery charger</b>	4
<b>Shorepower</b>	with cable
<b>Trimtabs</b>	yes

## NAVIGATION

<b>VHF</b>	2
<b>Autopilot</b>	yes
<b>Radar/GPS/plotter</b>	yes
<b>Navigation lights</b>	yes
<b>Searchlight</b>	yes

## EQUIPMENT

<b>Bimini</b>	yes
<b>Cockpit table</b>	yes
<b>Bathing platform</b>	yes
<b>Anchor</b>	Delta



Anchor chain	110 meter
Deck crane	hydraulic
Fenders	yes
Mooring lines	yes
TV	yes
TV receiver	yes
Extinguisher in engine room	yes
Auto extinguisher system	yes



# RODMAN MUSE 74





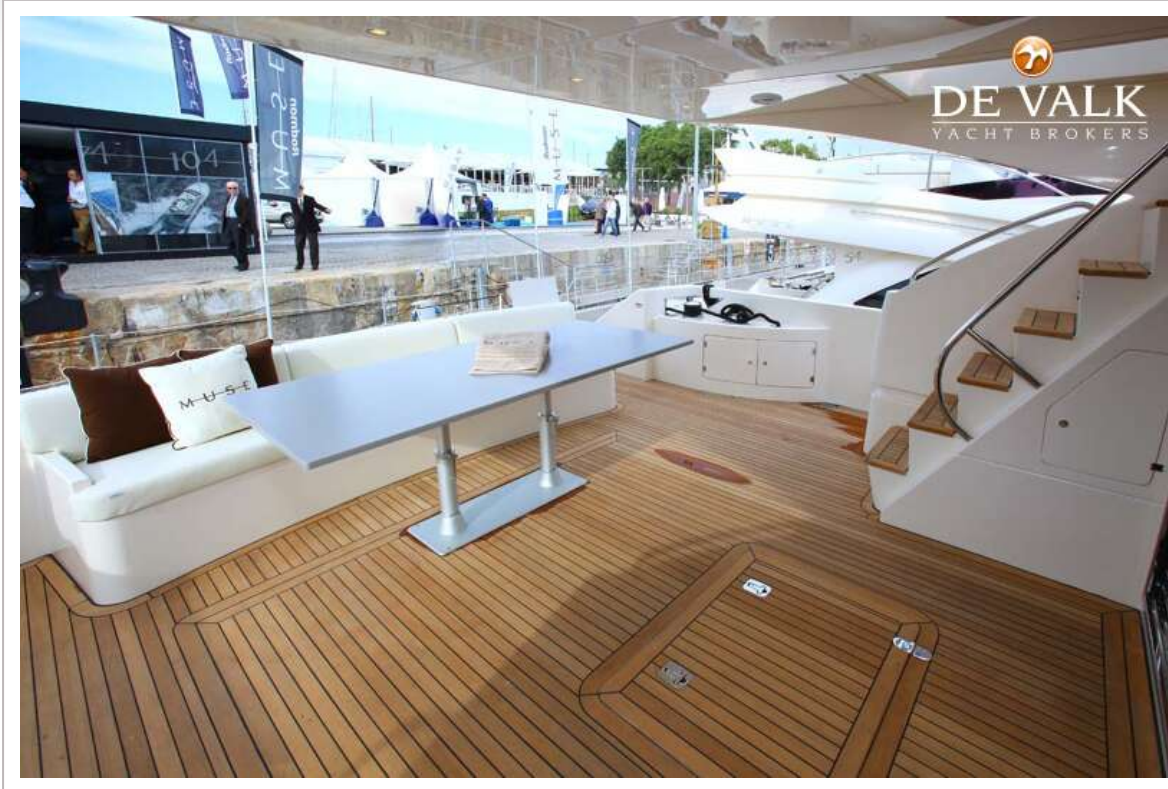
# RODMAN MUSE 74



# RODMAN MUSE 74



# RODMAN MUSE 74

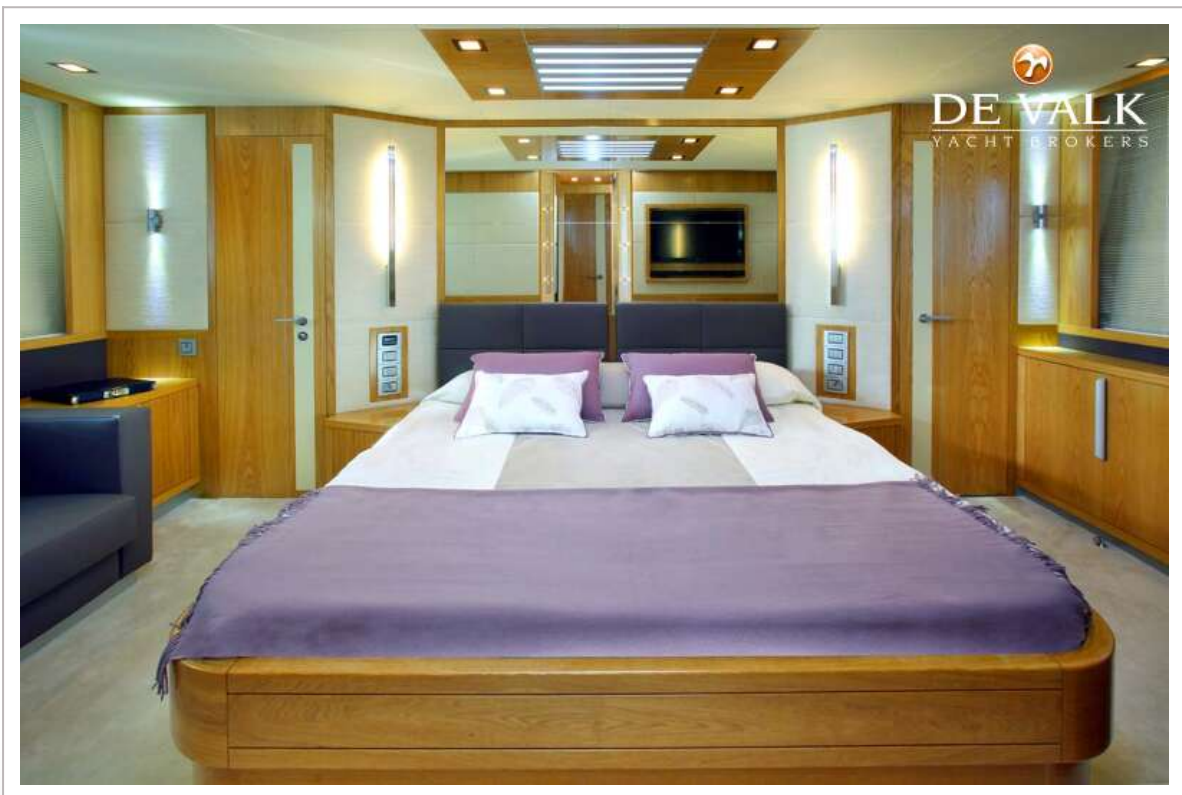


# RODMAN MUSE 74



# RODMAN MUSE 74

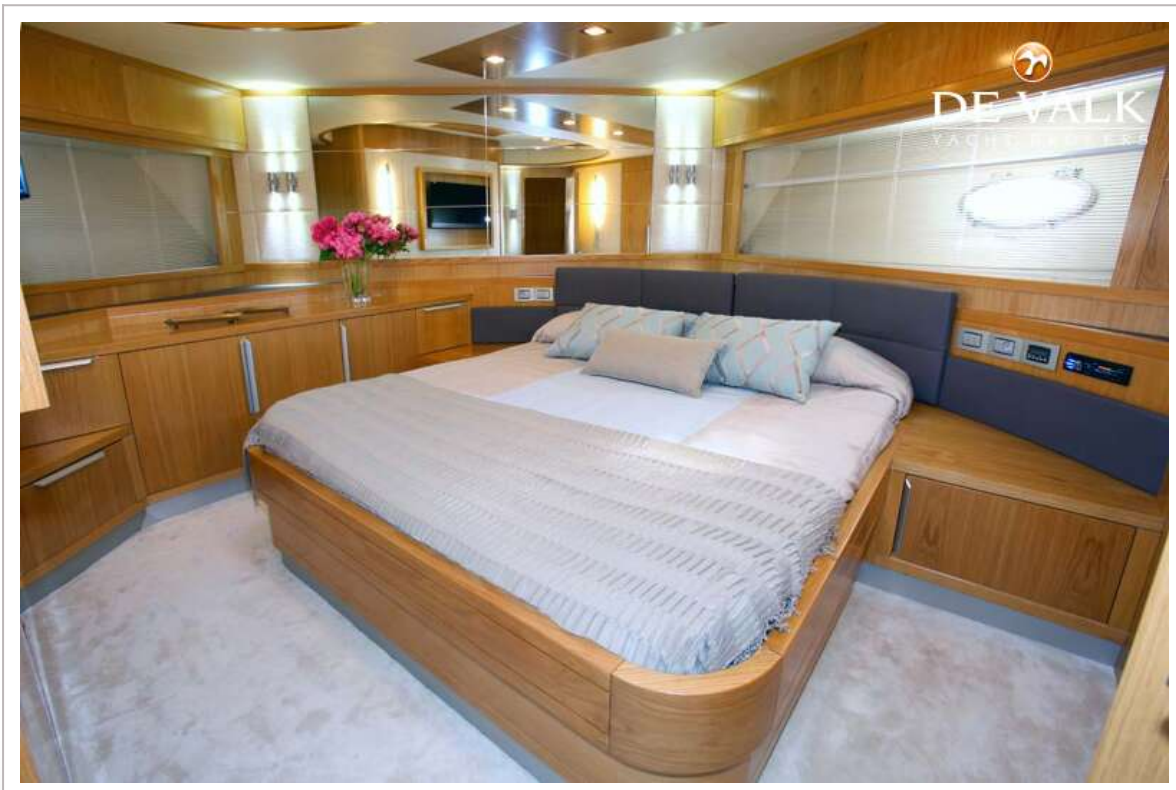




# RODMAN MUSE 74



# RODMAN MUSE 74

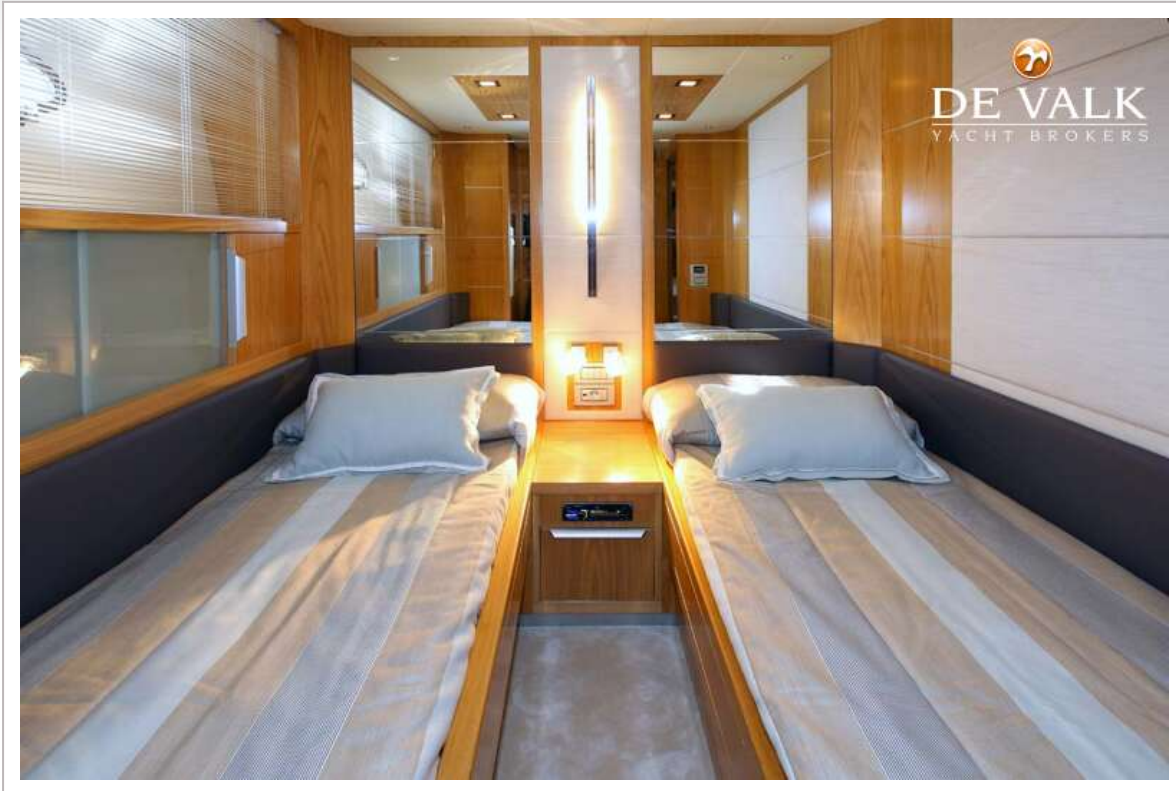




# RODMAN MUSE 74



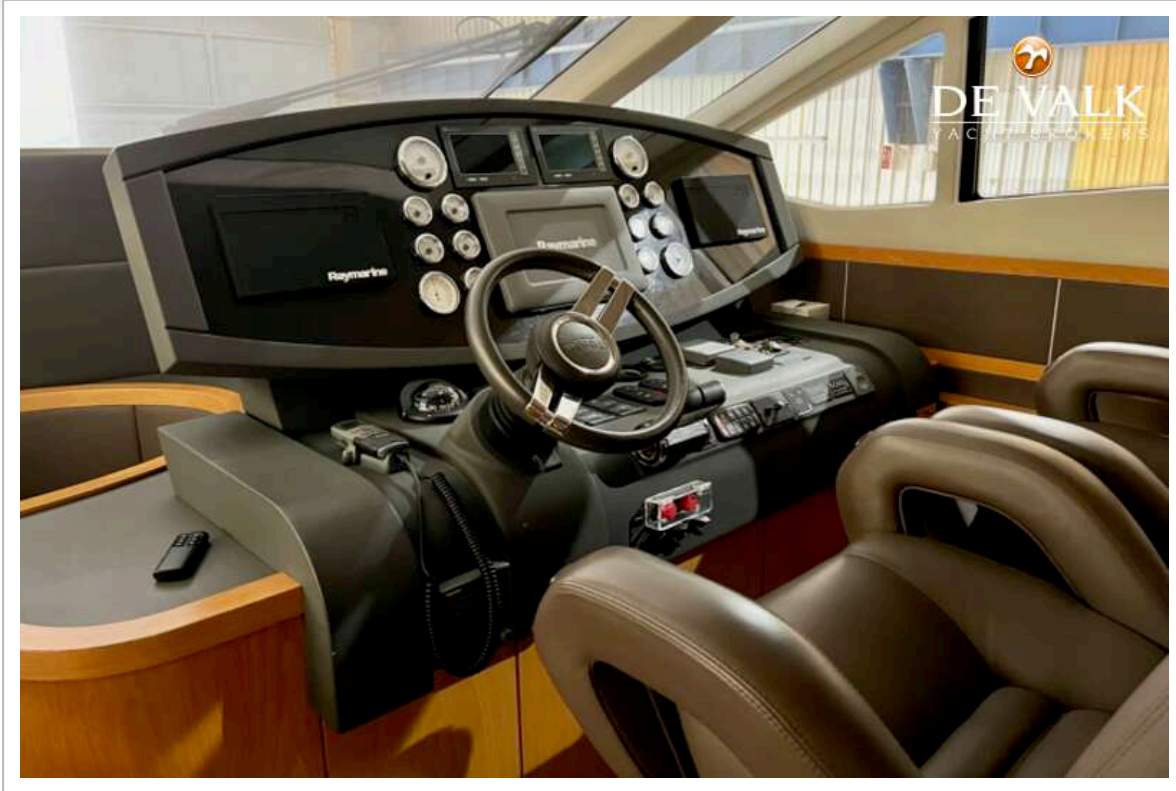
# RODMAN MUSE 74



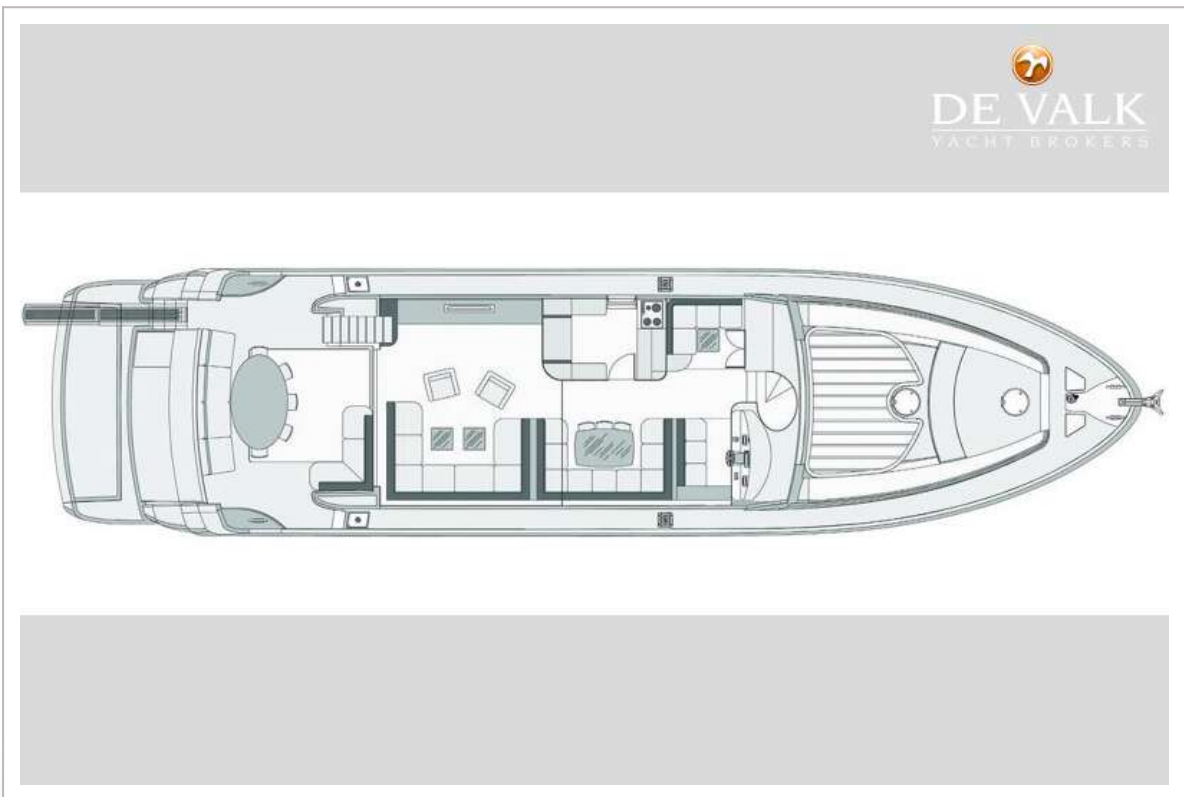
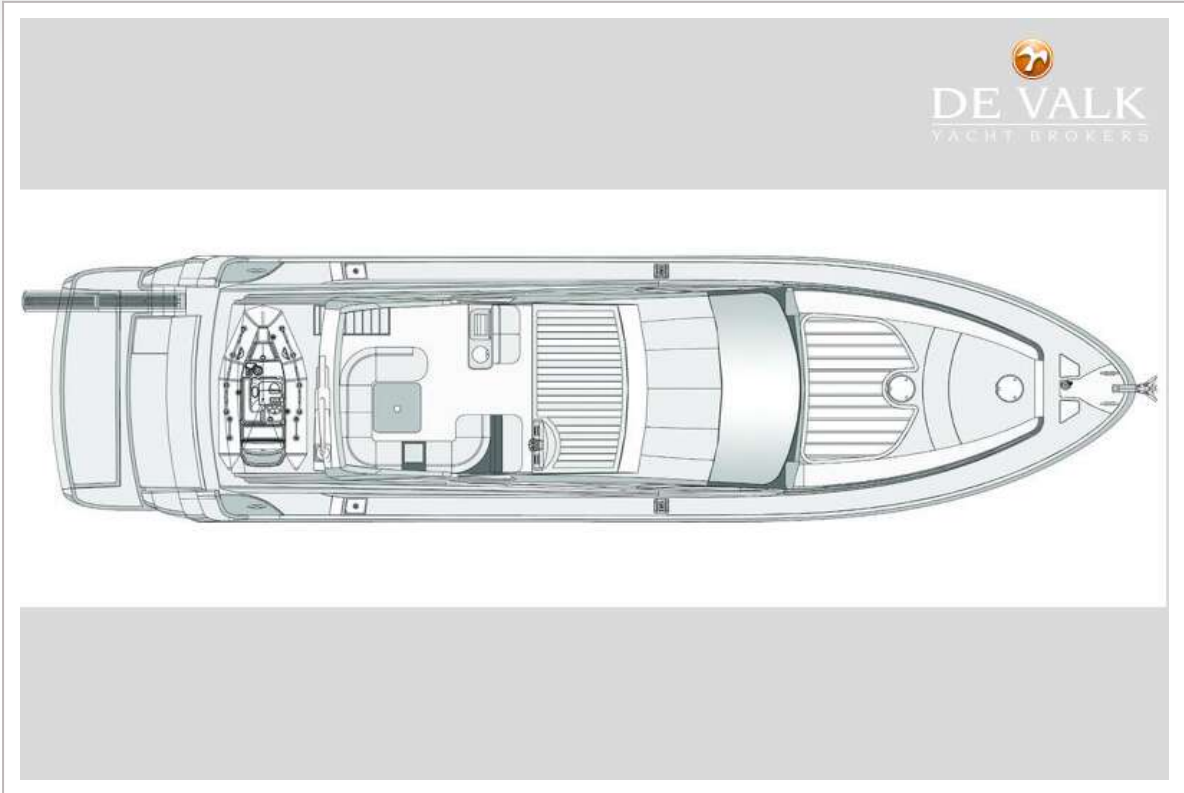
# RODMAN MUSE 74



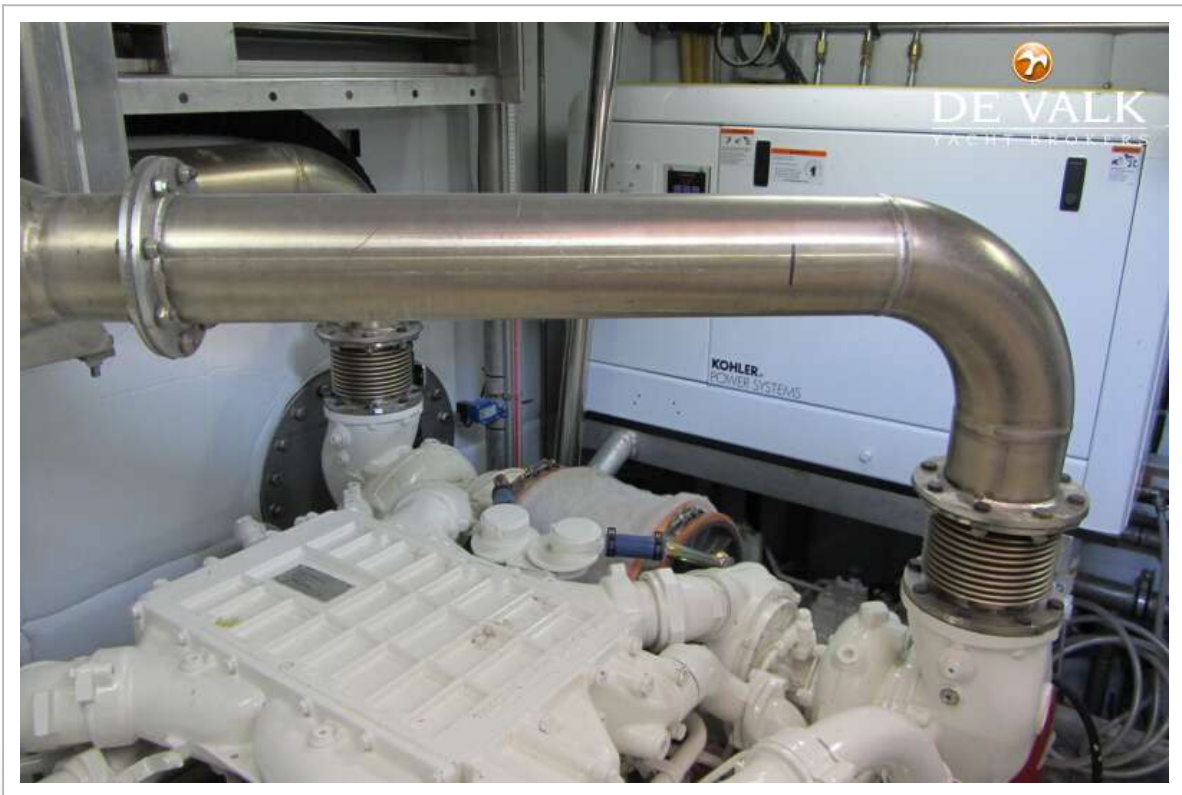
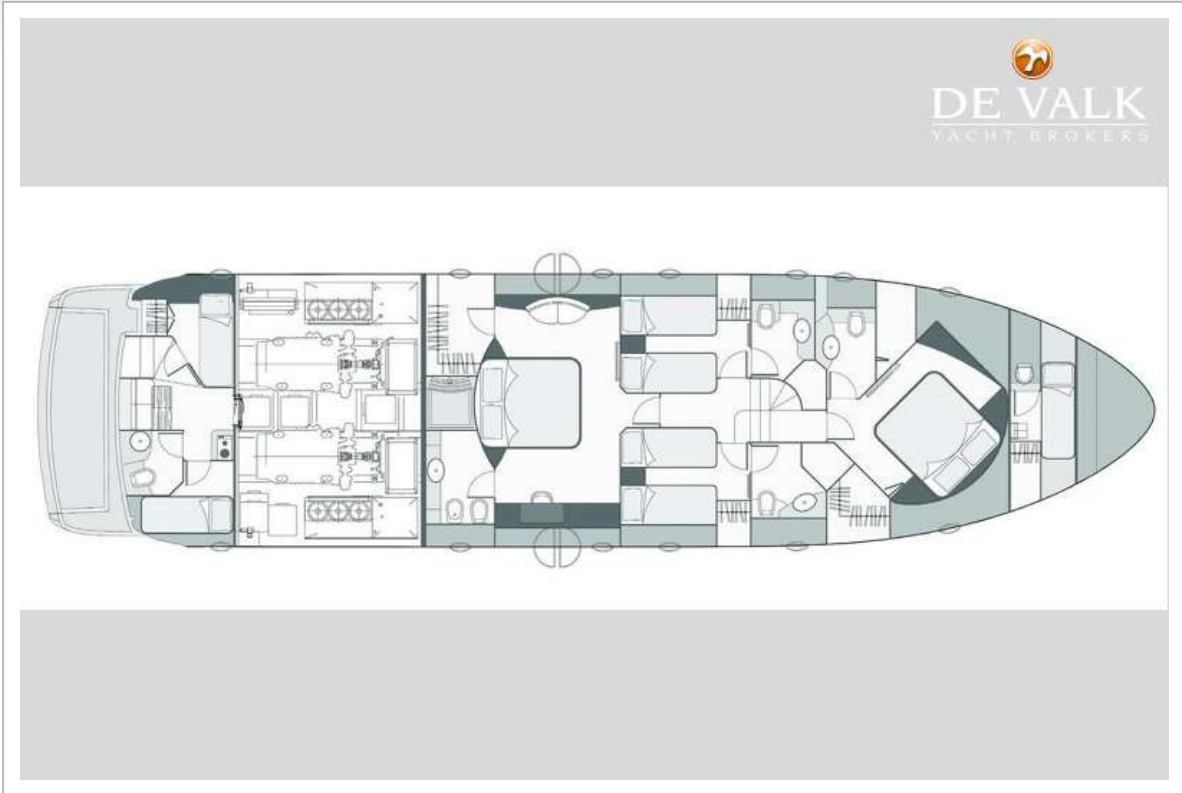
# RODMAN MUSE 74



# RODMAN MUSE 74



# RODMAN MUSE 74



# RODMAN MUSE 74

