



DE VALK
YACHT BROKERS



SALONA 37



DE VALK
YACHT BROKERS

BROKER'S COMMENTS

Yes indeed, we found another one in Hindeloopen, another hidden gem from the first owner that has always been used privately... This by J & J desigend Salona 37 has been on the market since 2006 and as been further developed and perfected over the years. This makes it a sporty cruiser that delivers excellent performance in all conditions. Safe and comfortable with a modern light interior. "Larcan" is now ready to be viewed and admired 7 days a week at our sales marina in Hindeloopen.

Johan Nooitgedagt

SPECIFICATIONS

Dimensions	11.28 x 3.60 x 2.28 (m)	Builder	AD Boats
Built	2008	Cabins	3
Material	Vinylester	Berths	8
Engine(s)	1 x Yanmar 3YM30 diesel	Hp/Kw	30.00 (hp), 22.08 (kw)
Asking price	sold (VAT)	Lying	contact Hindeloopen

CONTACT

Sales office	De Valk Hindeloopen	Telephone	+31 514 52 40 00
Address	Oosterstrand 1 8713 JS Hindeloopen The Netherlands	E-mail	hindeloopen@devalk.nl

DISCLAIMER

These particulars are given in good faith as supplied but cannot be guaranteed.



GENERAL

Model	SALONA 37
Type	sailing yacht
LOA (m)	11,28
LWL (m)	10,23
Beam (m)	3,60
Draft (m)	2,28
Headroom (m)	1,95
Year built	2008
Launched	2008
Builder	AD Boats
Country	Croatia
Designer	J & J Design
Displacement (t)	6,2
Ballast (tonnes)	lead 2,270
CE norm	A
Hull material	vinylester
Hull colour	white
Hull shape	round-bilged
Keel type	fin keel
Superstructure material	vinylester
Rubbing strake	stainless steel
Deck material	vinylester
Deck finish	non-skid moulded in
Superstructure deck finish	non-skid moulded in
Cockpit deck finish	teak
Antifouling (year)	2023
Window frame	aluminium
Window material	perspex
Deckhatch	yes
Fuel tank (litre)	polyethylene 110



Level indicator (fuel tank)	Does not work
Freshwater tank (litre)	polyethylene 160
Blackwater tank (litre)	40 liter
Level indicator (blackwater)	Led
Blackwater tank extraction	deck extraction + uw line
Wheel steering	cable steering
Outside helm position	chain steering Jefa steering pedestal
Emergency tiller	yes

ACCOMMODATION

Cabins	3
Berths	8
Interior	teak
Floor	woodprint
Open cockpit	yes
Saloon	yes
Headroom saloon (m)	1,95
Heating	diesel ducted hot air Webasto, needs to be repaired
Navigation center	yes
Chart table	yes
Galley	yes
Countertop	corian
Sink	stainless steel
Cooker	calor gas 2 Burner
Oven	yes
Fridge	yes
Hot water system	220V + engine Boiler
Coffee maker	yes
Owners cabin	v-bed Front
Bed length (m)	2,10
Wardrobe	hanging and shelves



Bathroom	shared
Toilet	shared
Toilet system	manual
Wash basin	at the toilet
Shower	shared
Guest cabin 1	double bed Rear
Bed length (m)	2,10
Wardrobe	hanging and shelves
Guest cabin 2	double bed Rear
Bed length (m)	2,10
Wardrobe	hanging and shelves

MACHINERY

No of engines	1
Make	Yanmar
Type	3YM30
HP	30
kW	22.08
Fuel	diesel
Maximum speed (kn)	8
Cruising speed (kn)	6
Consumption (l/hr)	2,4
Engine cooling system	freshwater heat exchanger
Drive	sail-drive
Saildrive seal	2019
Engine controls	bowden cable
Gearbox	mechanical
Exhaust	watercooled
Propeller type	feathering Gori
Propeller blades	3
Manual bilge pump	yes



Electric bilge pump	yes
Start battery	2021 1x 70Ah
Service battery	2021 1x 100Ah
Battery charger/inverter	yes
Shorepower	with cable

NAVIGATION

Compass	yes
Depth sounder	Raymarine ST60+
Log	Raymarine ST60+
Windset	Raymarine ST60+
VHF	Raymarine
Autopilot	Raymarine ST6002
Rudder angle indicator	Raymarine ST6002 autopilot
Plotter/GPS	Raymarine C80
Navtex	Furuno
Electronic chart(s)	Old
AIS receiver	Raymarine
AIS transponder	Raymarine
Navigation lights	yes

EQUIPMENT

Sprayhood	yes
Cockpit cover	yes
Sun awning	Over Boom
Cockpit cushions	yes
Cockpit table	yes
Bathing platform	yes
Boarding ladder	stainless steel
Deck shower	yes
Anchor	Bruce



Anchor chain	50m
Anchor 2	Delta
Windlass	electrical
Deck wash	Pump and hoses
Outboard support	yes
Sea railing	wire
Grab rail (superstructure)	stainless steel
Pushpit	yes
Pulpit	yes
Life raft	valise (or bag) No survey
Life raft (pers)	6
Lifebuoy	yes
Safety lines on deck	yes
Binocular	yes
Radar reflector	yes
Fenders	yes
Mooring lines	yes
Spare parts	yes
Tools	yes
Radio-cd player	yes
Cockpit speakers	yes
Speakers in salon	yes
Clock - barometer	yes
Fire extinguisher	3x
Latest extinguisher survey	No survey
Auto extinguisher system	Engine room

RIGGING

Rigging	sloop
Standing rigging	wire
Brand mast	Sparcraft



Material mast	aluminium
Spreaders	2 pair
Keel stepped mast	yes
Mainsail	2021 Molenaar 42m2 Laminaat DCX medium polyant
Mainsail cover	yes
Battcars	yes
Fully battened mainsail	yes
Genoa II	2020 Molenaar 27m2 Laminaat DCX medium polyant
Genoa furler	Harken
Gennaker	2008 Quantum Sails + Snuffler
Spinnaker	2008 Quantum, Sails + Snuffler
Backstay adjuster	hydraulic Holmatro
Boomvang	gasspring Sparcraft
Genoa sheetwinches	yes
Halyard winches	yes
Multifunctional winches	halyard/sheet winches
Spi-pole	aluminium Sparcraft
Gennaker pole	aluminium Selden, adjustable



SALONA 37





SALONA 37




DE VALK
YACHT BROKERS




DE VALK
YACHT BROKERS



SALONA 37



SALONA 37



SALONA 37



SALONA 37

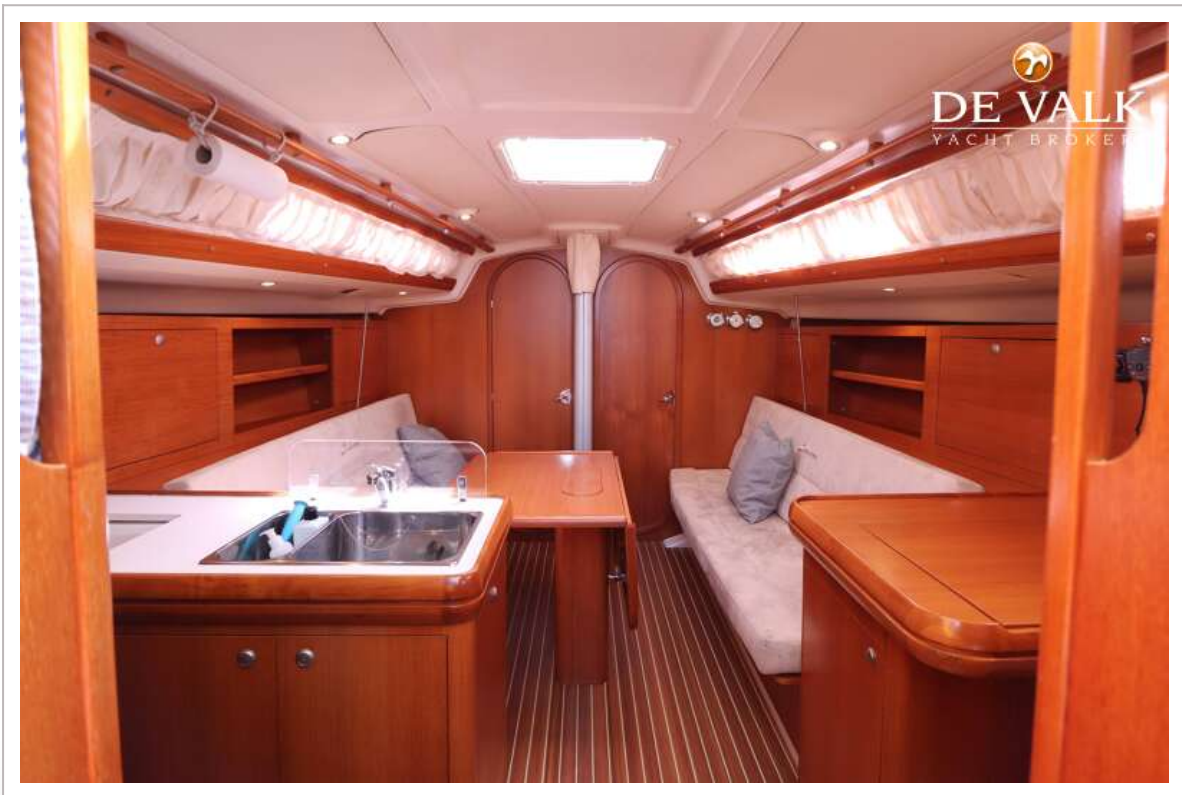




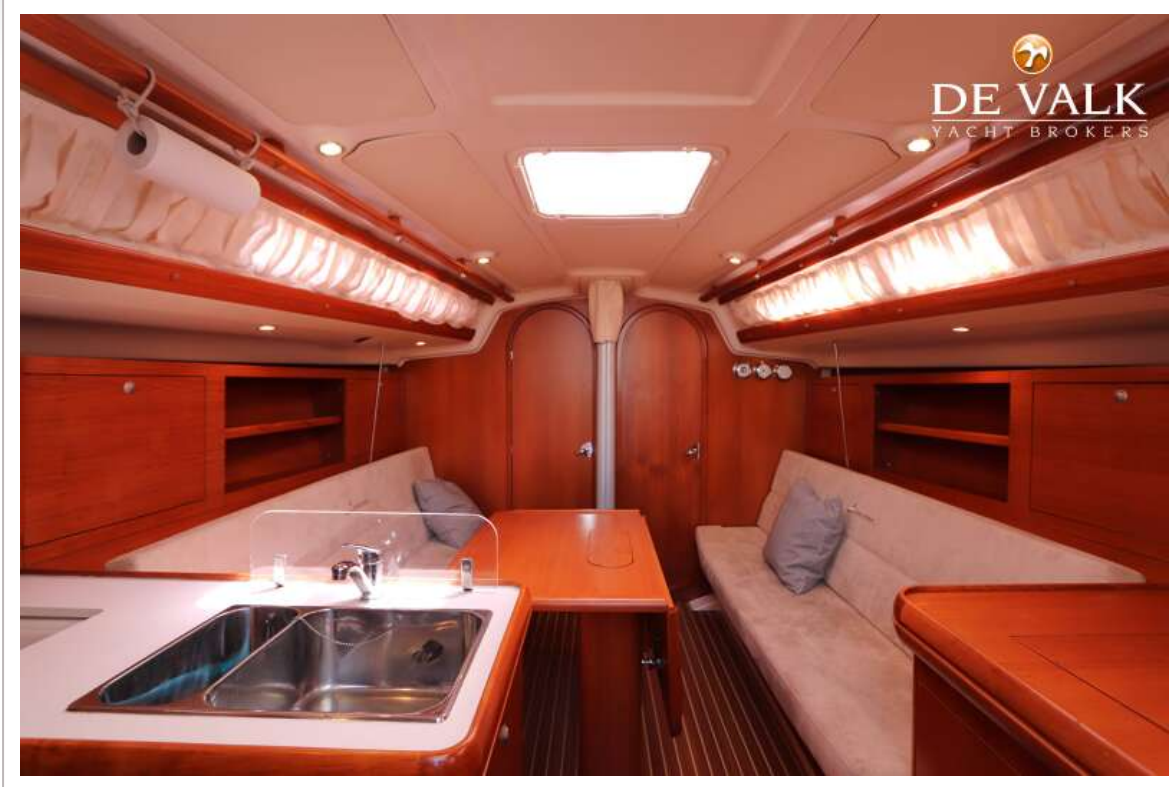
SALONA 37



SALONA 37



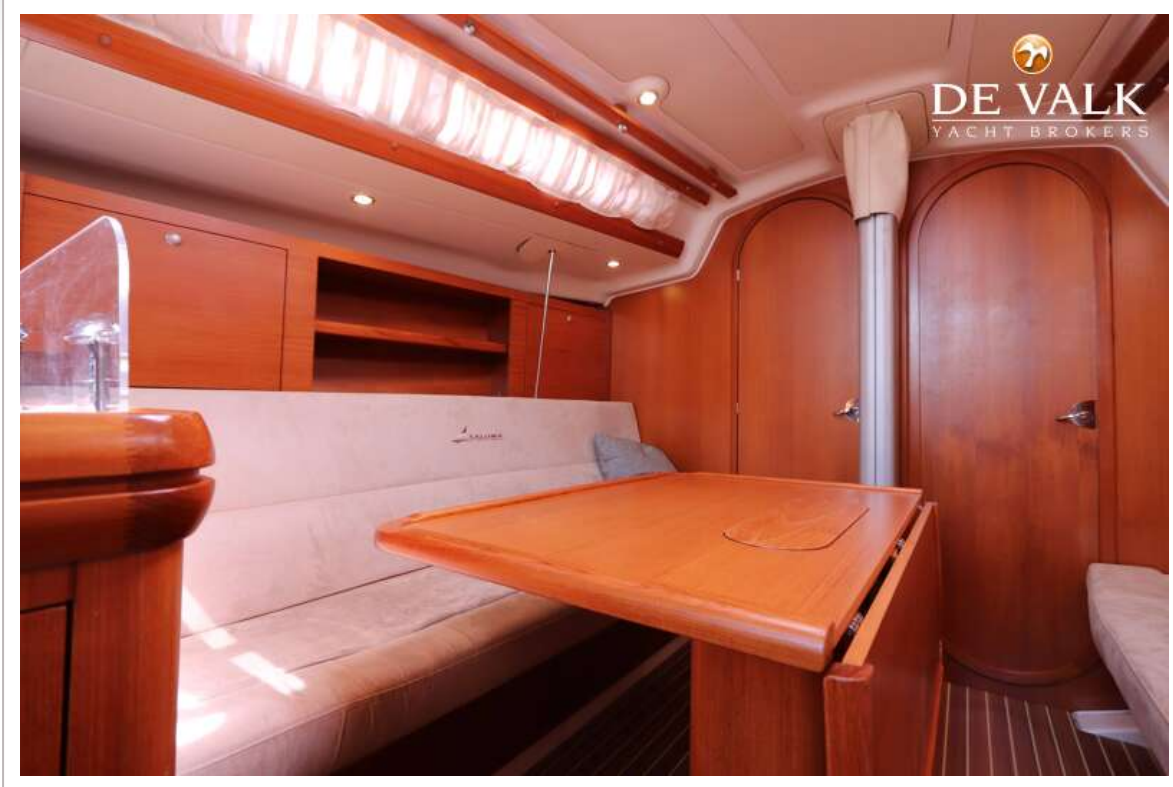
SALONA 37



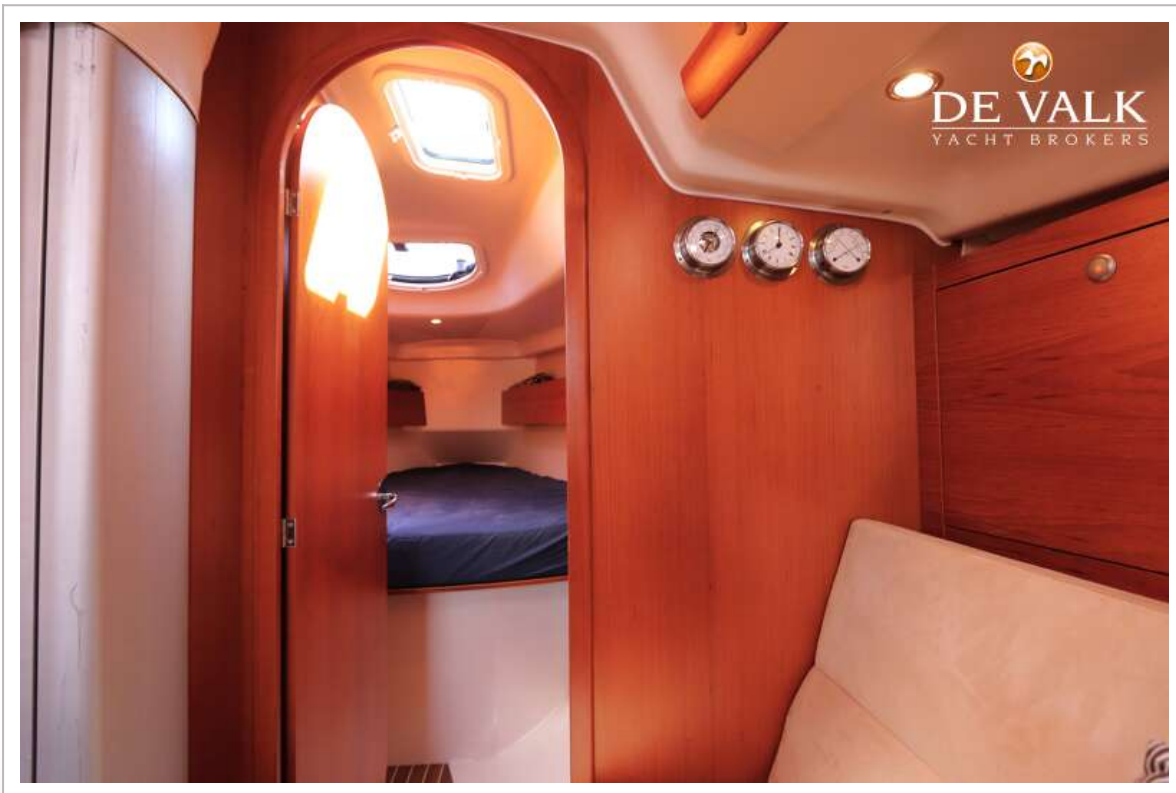
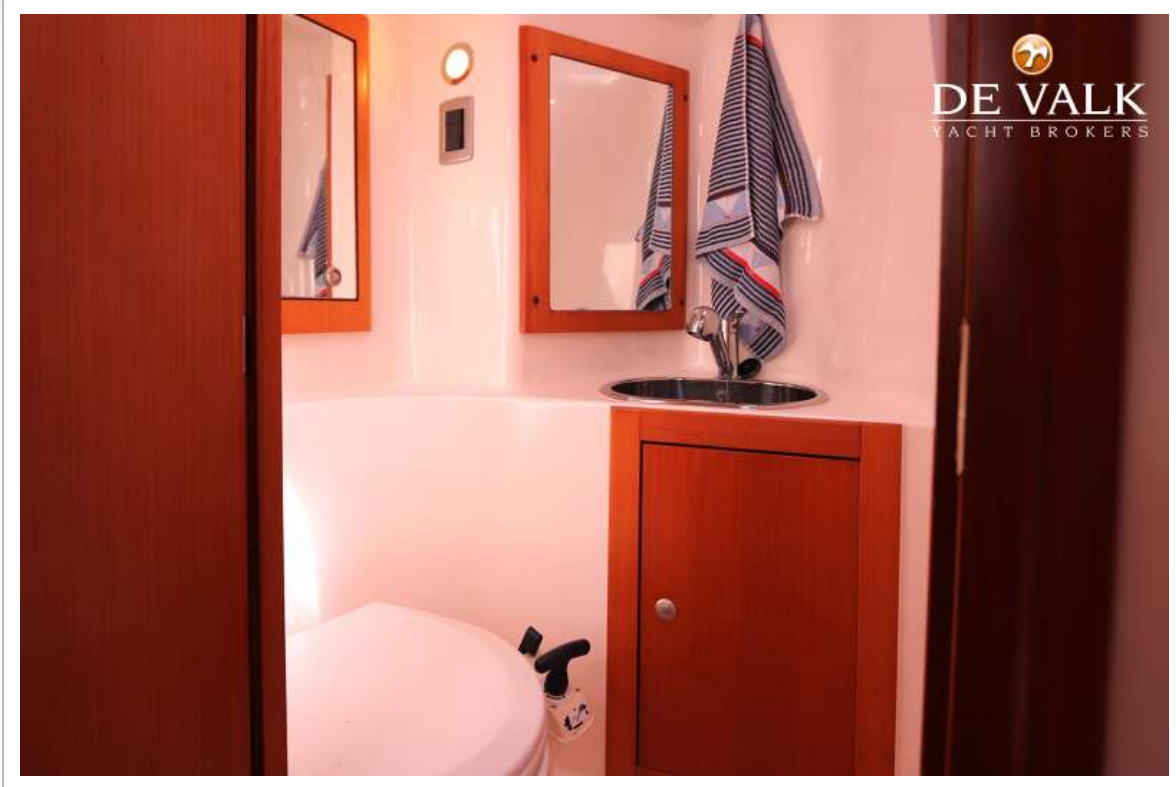
SALONA 37



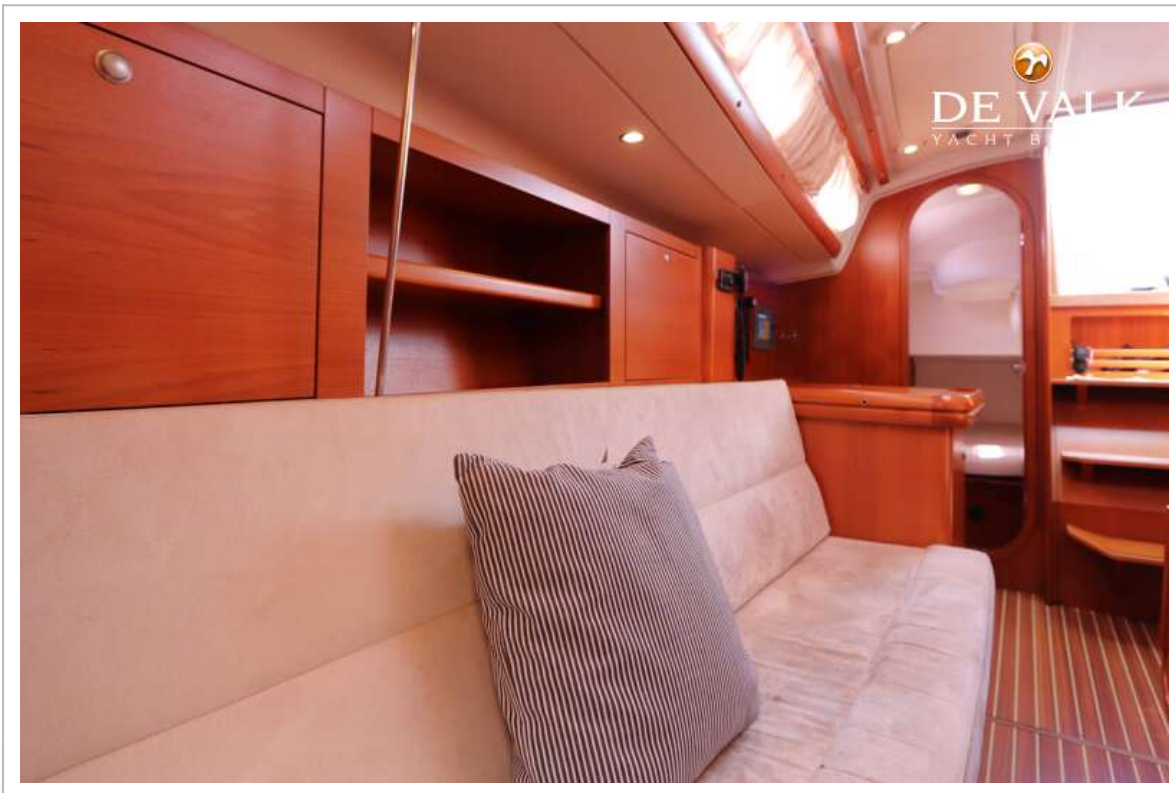
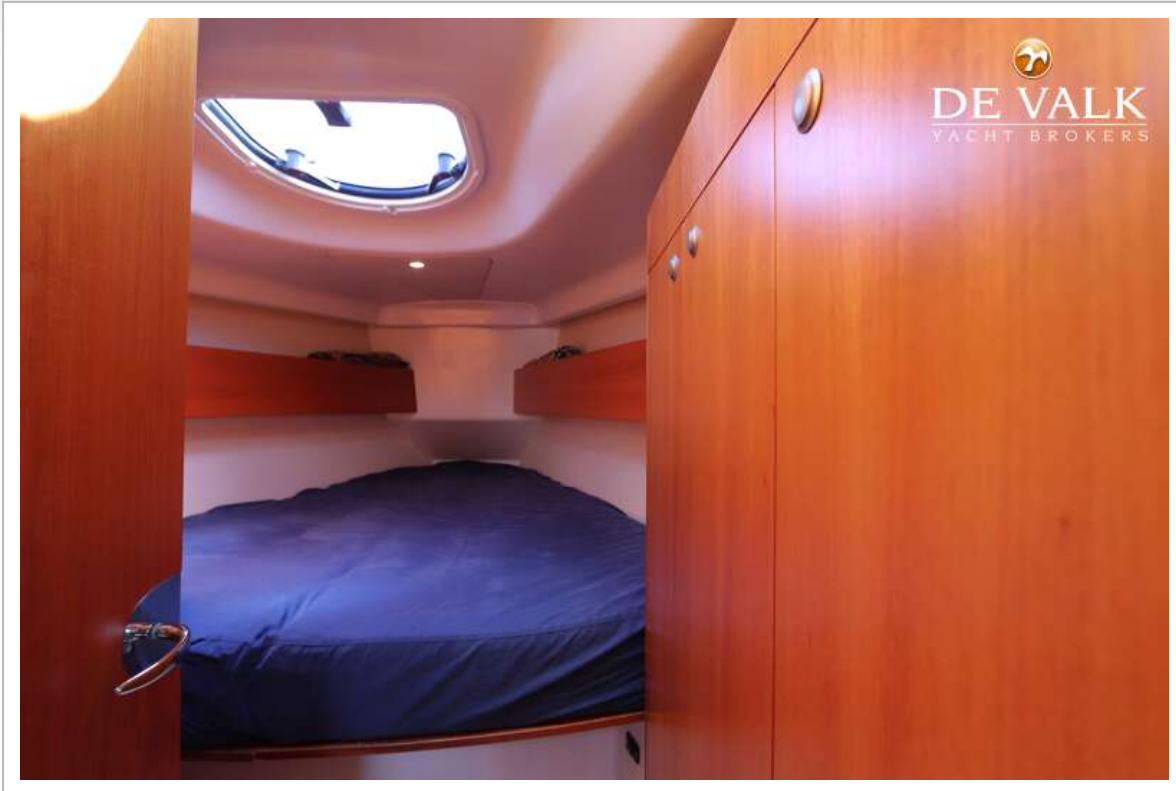
SALONA 37



SALONA 37



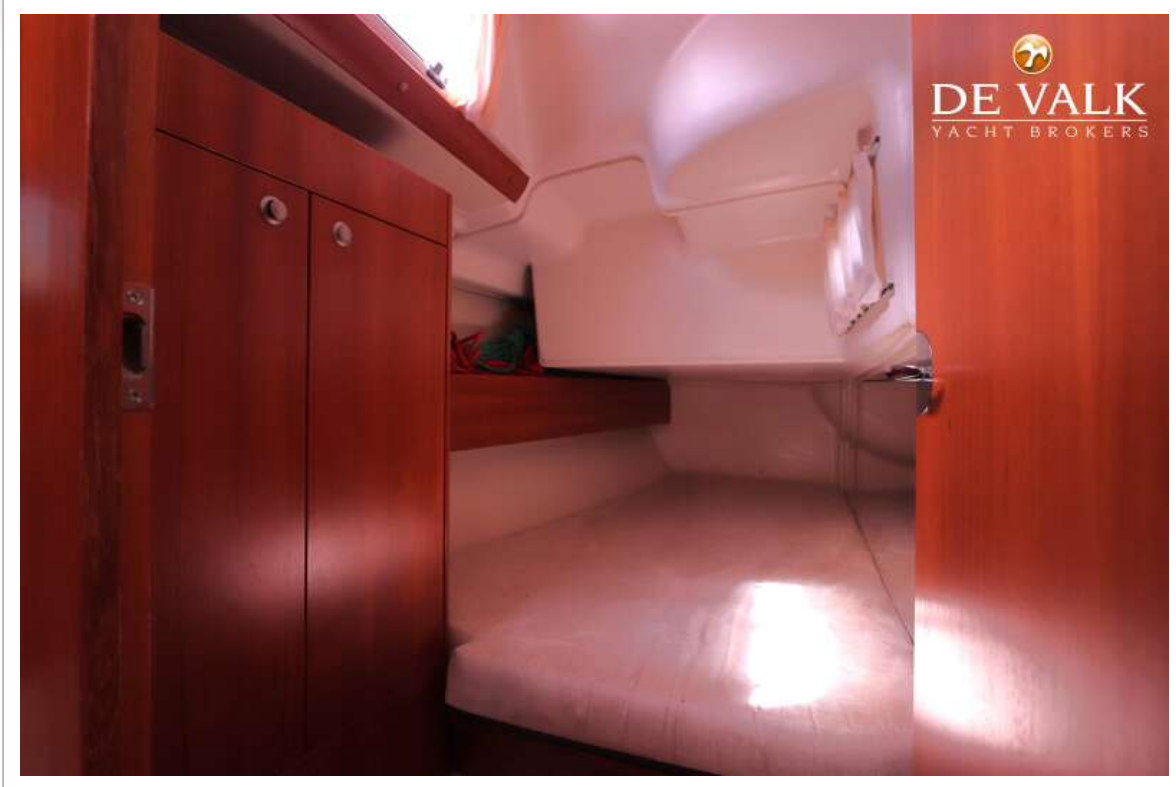
SALONA 37



SALONA 37



SALONA 37



SALONA 37



SALONA 37

