



DE VALK  
YACHT BROKERS



BENETEAU MONTE CARLO 47 HARD TOP



DE VALK  
YACHT BROKERS

# BENETEAU MONTE CARLO 47 HARD TOP

## BROKER'S COMMENTS

It's lots of holiday on 47 feet. This yacht is comfortable for 4 Persons inside, elegant and practical outside. She carries your water toys in the lazarette in the aft, while the large area of decksaloon and cockpit offer spacious openness. Located in Greece.

*Jürgen Jacobs*

## SPECIFICATIONS

<b>Dimensions</b>	14.80 x 4.37 x 1.10 (m)	<b>Builder</b>	Beneteau
<b>Built</b>	2012	<b>Cabins</b>	2
<b>Material</b>	GRP	<b>Berths</b>	4
<b>Engine(s)</b>	2 x Volvo Penta D6-435D-E diesel	<b>Hp/Kw</b>	2 x 435 (hp), 320.16 (kw)
<b>Asking price</b>	€ 395.000 (VAT Paid)	<b>Lying</b>	contact Hamburg

## CONTACT

<b>Sales office</b>	De Valk Hamburg	<b>Telephone</b>	+49 40 46 000 999
<b>Address</b>	Domstraße 11 20095 Hamburg Germany	<b>E-mail</b>	hamburg@devalk.nl

## DISCLAIMER

These particulars are given in good faith as supplied but cannot be guaranteed.



# BENETEAU MONTE CARLO 47 HARD TOP

## GENERAL

<b>Model</b>	BENETEAU MONTE CARLO 47 HARD TOP
<b>Type</b>	motor yacht
<b>LOA (m)</b>	14,80
<b>Beam (m)</b>	4,37
<b>Draft (m)</b>	1,10
<b>Air draft (m)</b>	4,70
<b>Headroom (m)</b>	1,95
<b>Year built</b>	2012
<b>Builder</b>	Beneteau
<b>Country</b>	France
<b>Displacement (t)</b>	11,6
<b>CE norm</b>	B
<b>Hull material</b>	GRP
<b>Hull colour</b>	White - blue
<b>Hull shape</b>	V-shaped hull
<b>Superstructure material</b>	GRP
<b>Rubbing strake</b>	steel
<b>Deck material</b>	GRP
<b>Deck finish</b>	teak
<b>Cockpit deck finish</b>	teak
<b>Radar arch</b>	non collapsible
<b>Fuel tank (litre)</b>	polyethylene 2 x 650L
<b>Level indicator (fuel tank)</b>	yes
<b>Freshwater tank (litre)</b>	polyethylene 2 x 300L
<b>Blackwater tank (litre)</b>	2 x 150L
<b>Level indicator (blackwater)</b>	yes
<b>Blackwater tank extraction</b>	yes
<b>Wheel steering</b>	yes
<b>Inside helm position</b>	yes



## ACCOMMODATION

<b>Cabins</b>	2
<b>Berths</b>	4
<b>Interior</b>	mahogany
<b>Layout</b>	2 cabin layout
<b>Deck saloon</b>	yes
<b>Saloon</b>	yes
<b>Headroom saloon (m)</b>	1,98m
<b>Air-conditioning</b>	reverse cycle airco
<b>Navigation center</b>	yes
<b>Aft Cabin</b>	yes
<b>Dinette to convert into berth</b>	Electric up/down table
<b>Sliding door to cockpit</b>	yes
<b>Galley</b>	yes
<b>Countertop</b>	corian
<b>Sink</b>	stainless steel
<b>Cooker</b>	yes
<b>Fridge</b>	270L Fridge / Freezer
<b>Freezer</b>	yes
<b>Hot water system</b>	220V + engine 40L boiler on 230V
<b>Water pressure system</b>	yes
<b>Owners cabin</b>	In aft: headroom 2,15m - 1,60m, Meridian couch
<b>Bed length (m)</b>	2,0m x 1,70m double bed, marine mattress
<b>Wardrobe</b>	yes
<b>Bathroom</b>	separate 2,30m headroom
<b>Toilet</b>	separate
<b>Toilet system</b>	vacuum Vacuflush electric toilet
<b>Wash basin</b>	yes
<b>Shower</b>	separate 3-folded swing door
<b>Guest cabin 1</b>	double bed VIP cabin in front
<b>Bed length (m)</b>	2,0m x 1,60m, Marine mattress



# BENETEAU MONTE CARLO 47 HARD TOP

<b>Bathroom</b>	yes
<b>Toilet</b>	separate
<b>Toilet system</b>	vacuum Vacuflush electric toilet
<b>Shower</b>	yes
<b>Washing machine</b>	AEG Lavamat 7kg
<b>Wet bar</b>	W/ 42L cockpit fridge
<b>Tender garage</b>	With rubber dinghi + outboard

## MACHINERY

<b>No of engines</b>	2
<b>Make</b>	Volvo Penta
<b>Type</b>	D6-435D-E
<b>HP</b>	435
<b>kW</b>	320.16
<b>Fuel</b>	diesel
<b>Engine hours</b>	728
<b>Engine cooling system</b>	freshwater heat exchanger
<b>Drive</b>	IPS
<b>Engine controls</b>	electrical IPS Docking system
<b>Bowthruster</b>	electric Max-Power
<b>Manual bilge pump</b>	1 x
<b>Electric bilge pump</b>	2 x
<b>Bilge alarm</b>	yes
<b>Electrical installation</b>	yes
<b>Generator</b>	wet exhaust Paguro 8500
<b>Start battery</b>	4 x engine batteries at 50Ah
<b>Service battery</b>	4 x house batteries at 140Ah
<b>Battery monitor</b>	yes
<b>Battery charger</b>	Vetus 24-50 Charger
<b>Inverter</b>	Cristec inverter
<b>Shorepower</b>	with cable



Trimtabs Volvo Penta, electric

## NAVIGATION

Compass	yes
Multi control display	yes
VHF	B&G w/ AIS
Autopilot	SIMRAD (new)
Radar/GPS/plotter	SIMRAD Touch (new)
AIS transceiver	B&G
Navigation lights	LED
Searchlight	Jabsco

## EQUIPMENT

Cockpit cover	yes
Sun awning	yes
Cockpit cushions	yes
Cockpit table	Teak, foldable
Cockpit chairs	yes
Bathing platform	yes
Boarding ladder	yes
Transom door	yes
Gangway	Besenzoni, electric
Deck shower	yes
Anchor	yes
Anchor chain	yes
Windlass	Lewmar 2000W
Dinghy	inflatable
Outboard	yes
Sea railing	yes
Grab rail (superstructure)	yes
Pulpit	yes



# BENETEAU MONTE CARLO 47 HARD TOP

Wiper	yes
Horn	yes
Fenders	yes
Mooring lines	yes
TV	yes
TV receiver	yes
Radio	yes
Surround Sound System	FUSION Sound System
Sub-woofer	yes
Speakers in salon	yes
Speakers in cabin	yes
Clock - barometer	yes
Fire extinguisher	yes



# BENETEAU MONTE CARLO 47 HARD TOP





# BENETEAU MONTE CARLO 47 HARD TOP



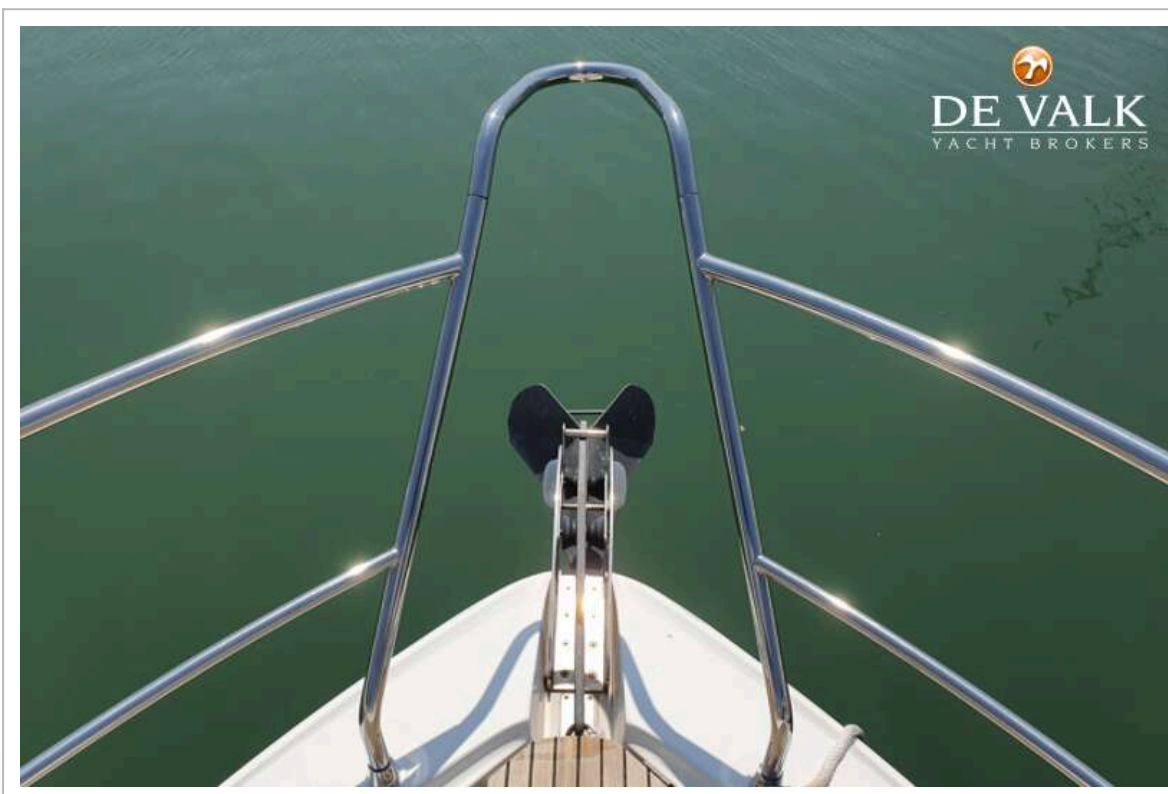
# BENETEAU MONTE CARLO 47 HARD TOP



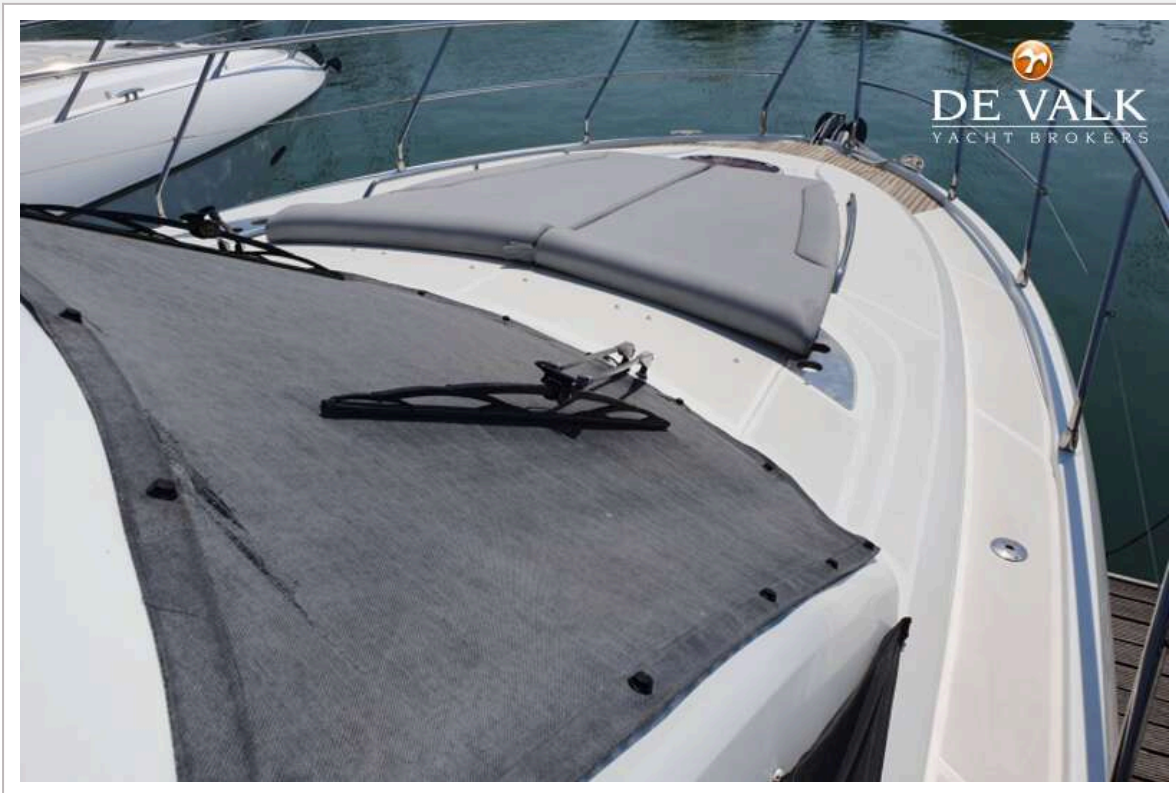
# BENETEAU MONTE CARLO 47 HARD TOP



# BENETEAU MONTE CARLO 47 HARD TOP



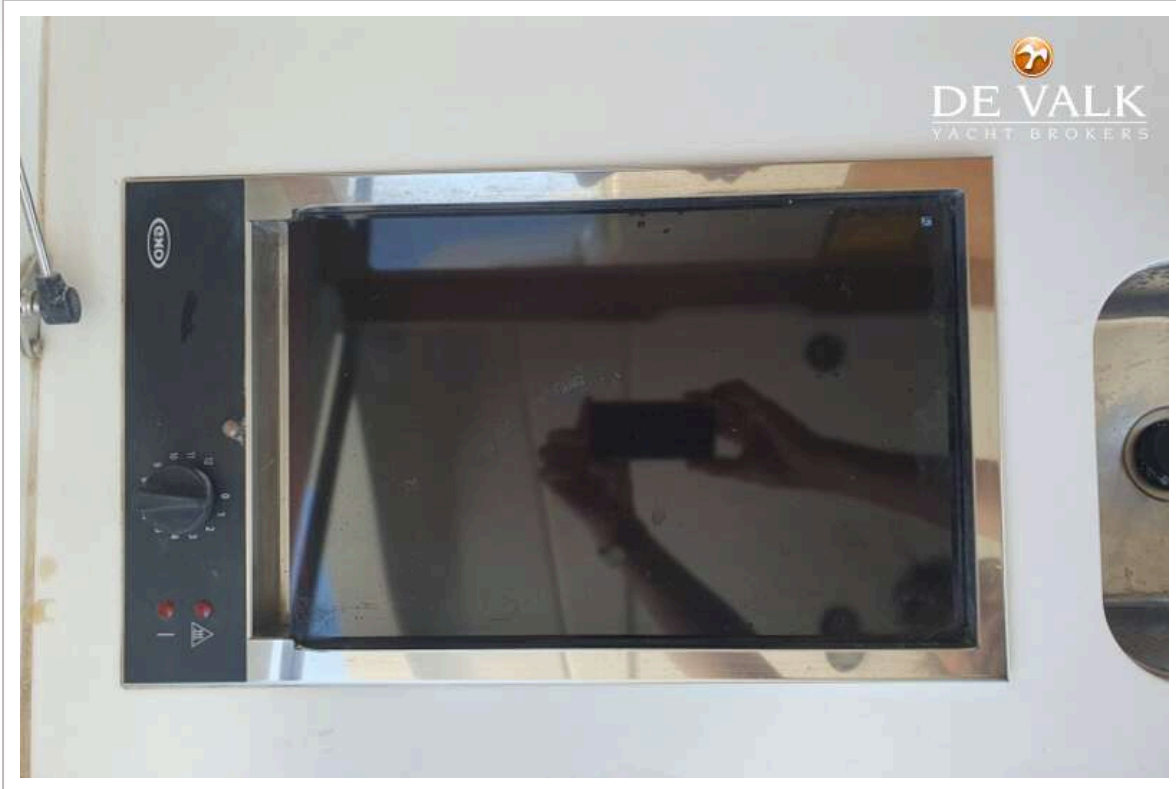
# BENETEAU MONTE CARLO 47 HARD TOP



# BENETEAU MONTE CARLO 47 HARD TOP



# BENETEAU MONTE CARLO 47 HARD TOP

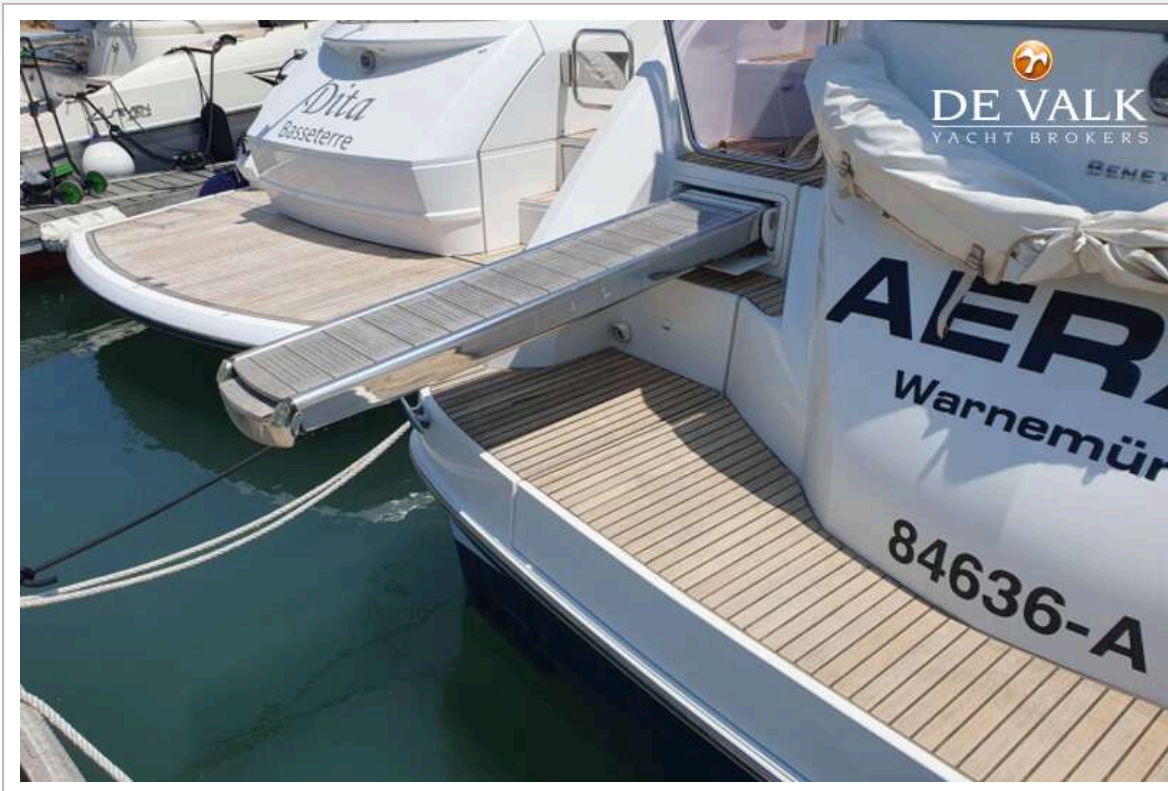


# BENETEAU MONTE CARLO 47 HARD TOP

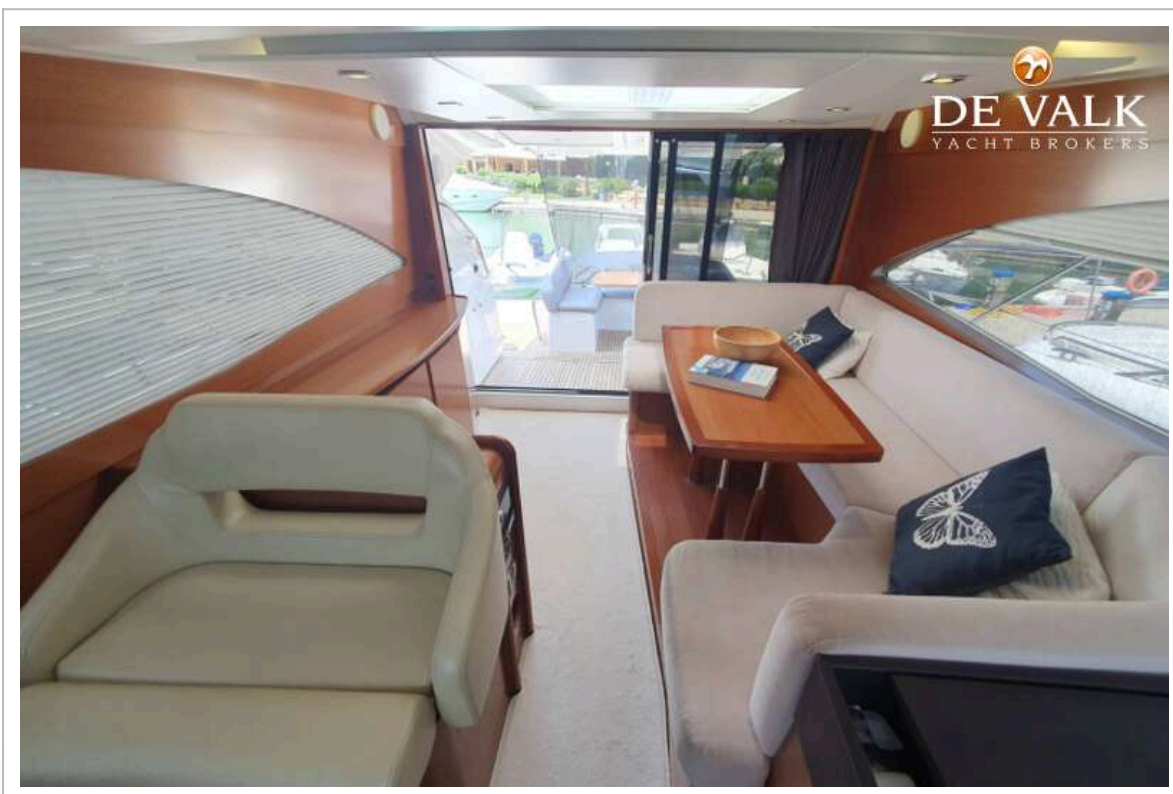




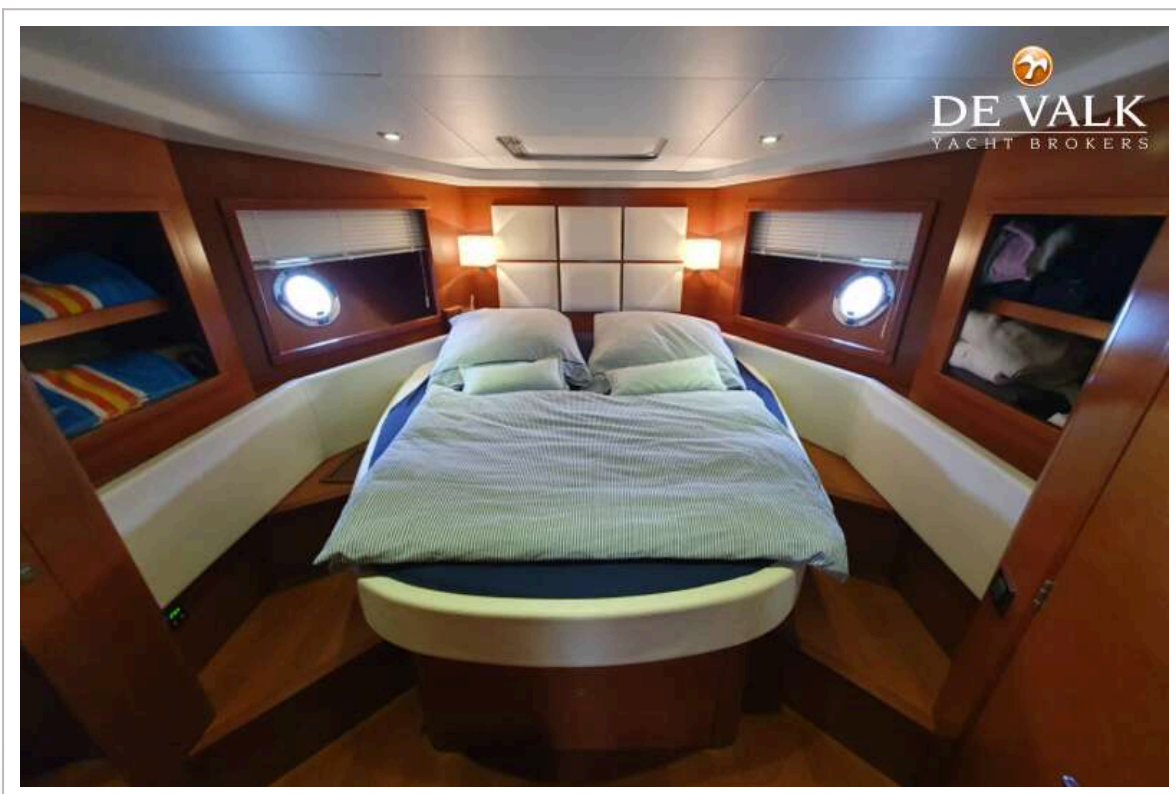
# BENETEAU MONTE CARLO 47 HARD TOP



# BENETEAU MONTE CARLO 47 HARD TOP



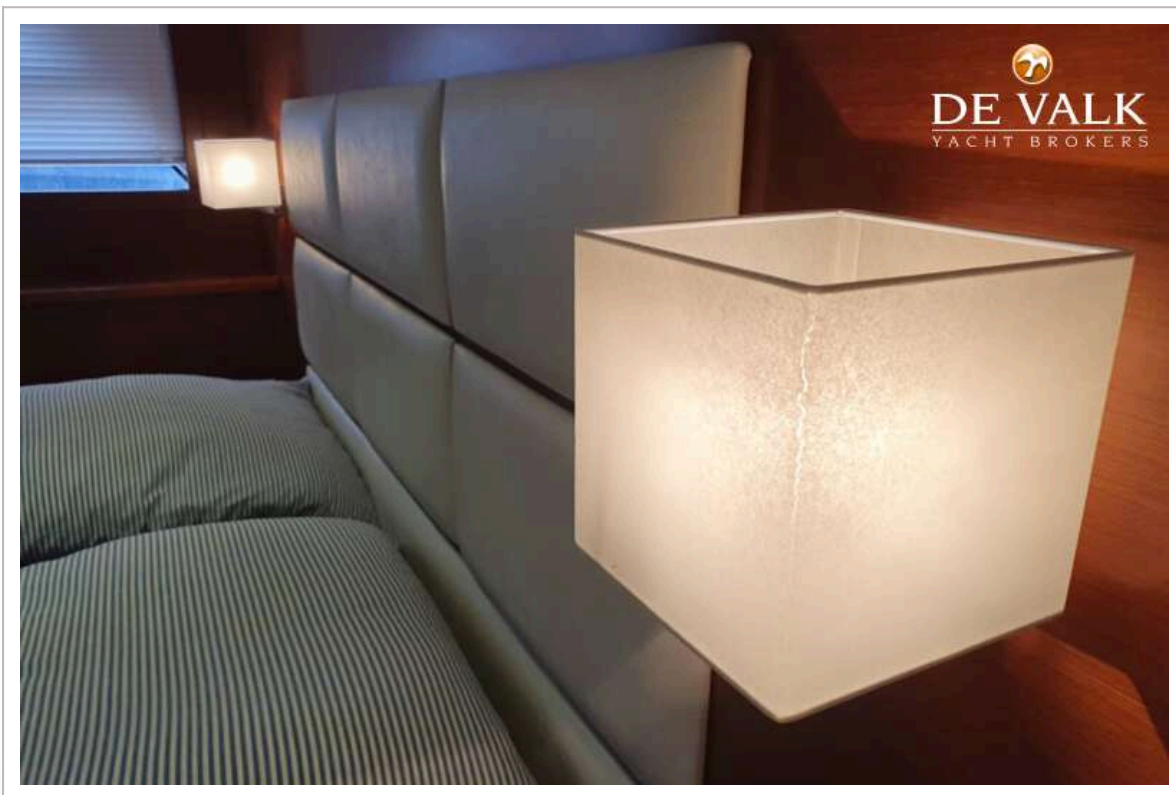
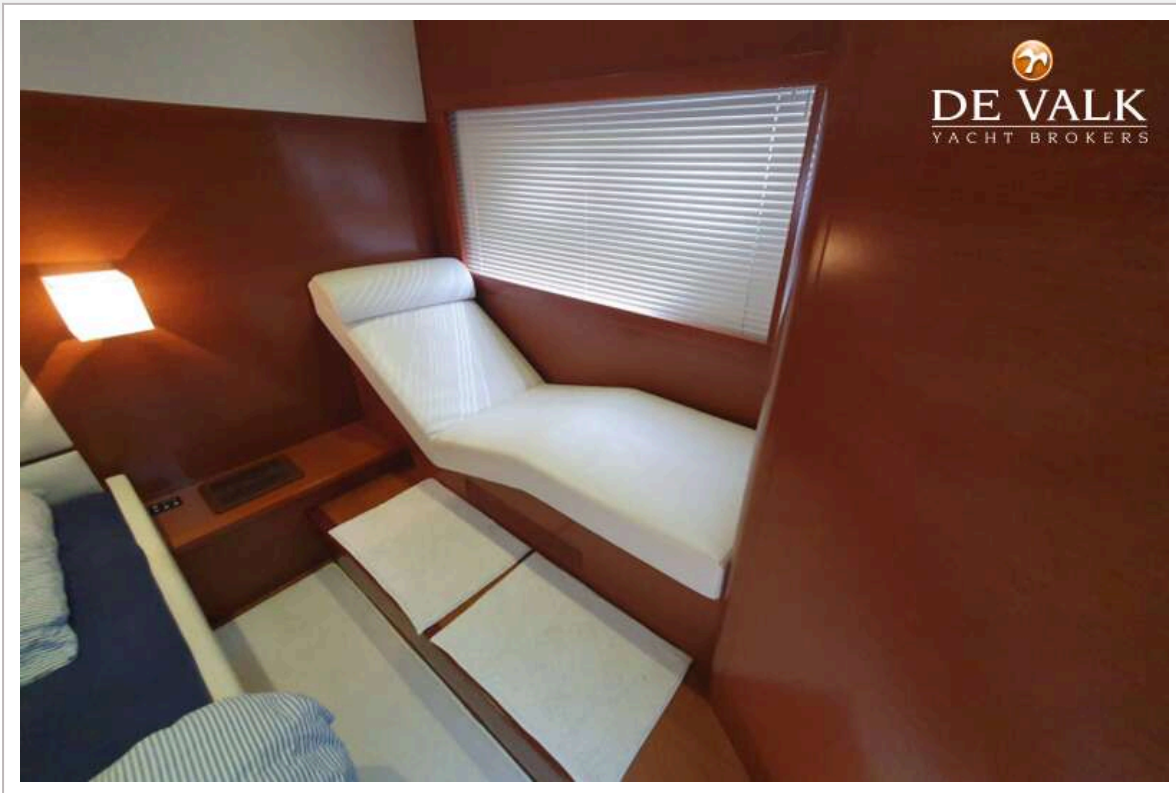
# BENETEAU MONTE CARLO 47 HARD TOP



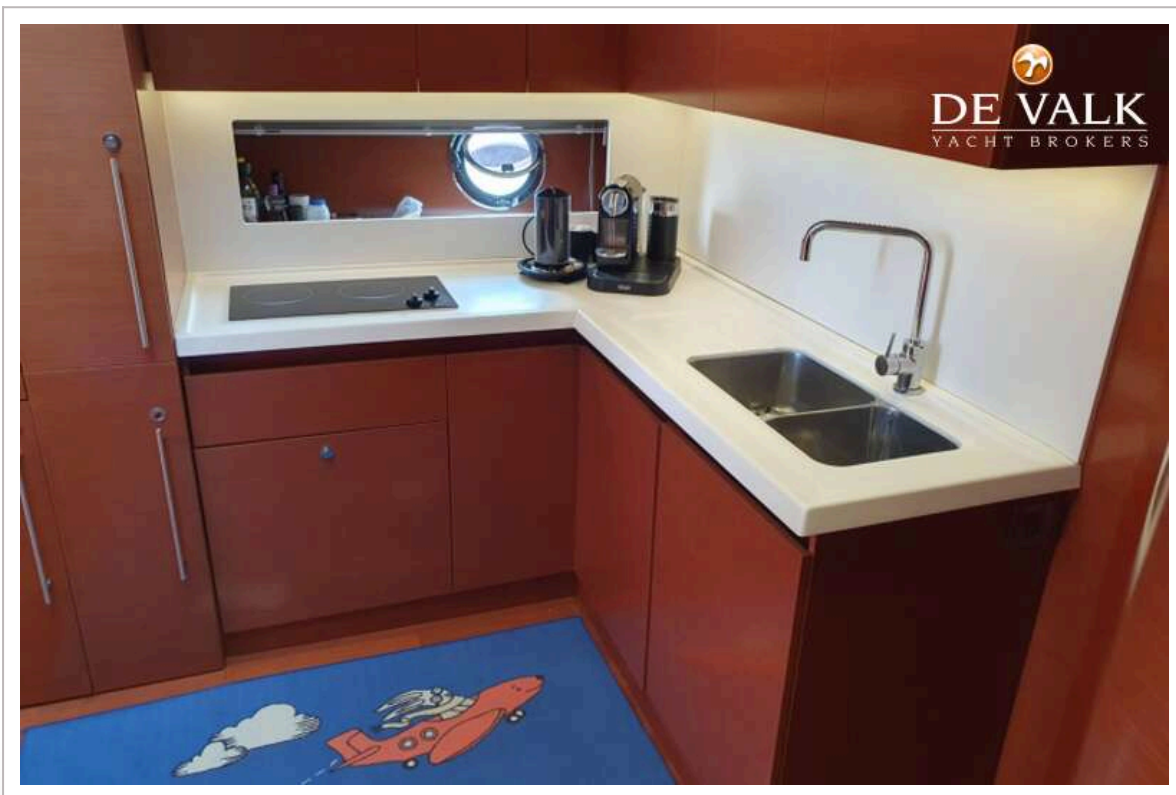
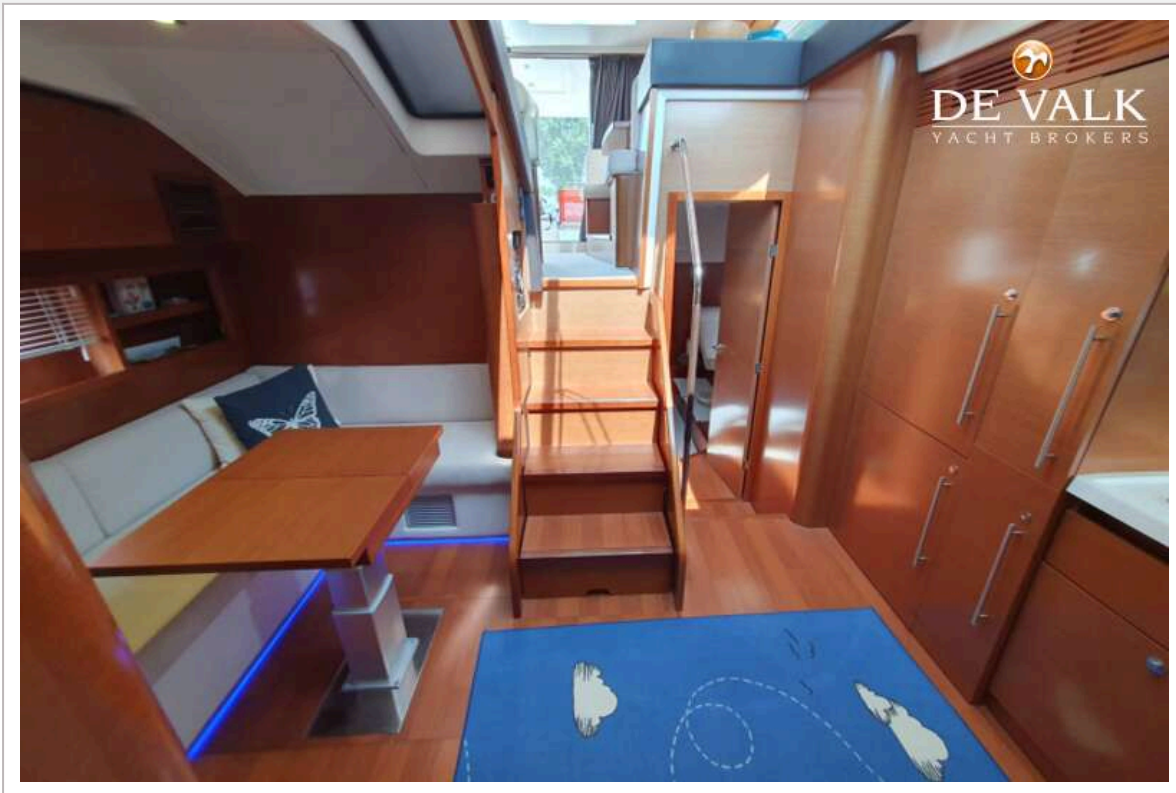
# BENETEAU MONTE CARLO 47 HARD TOP



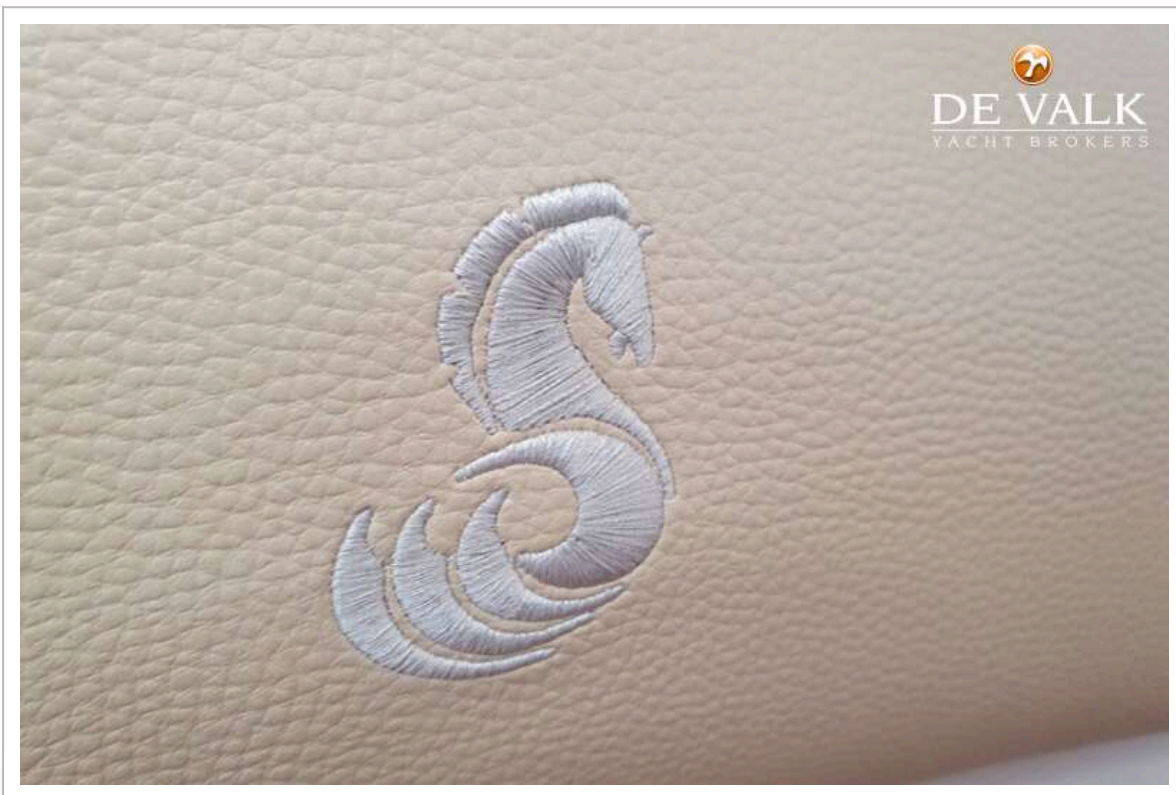
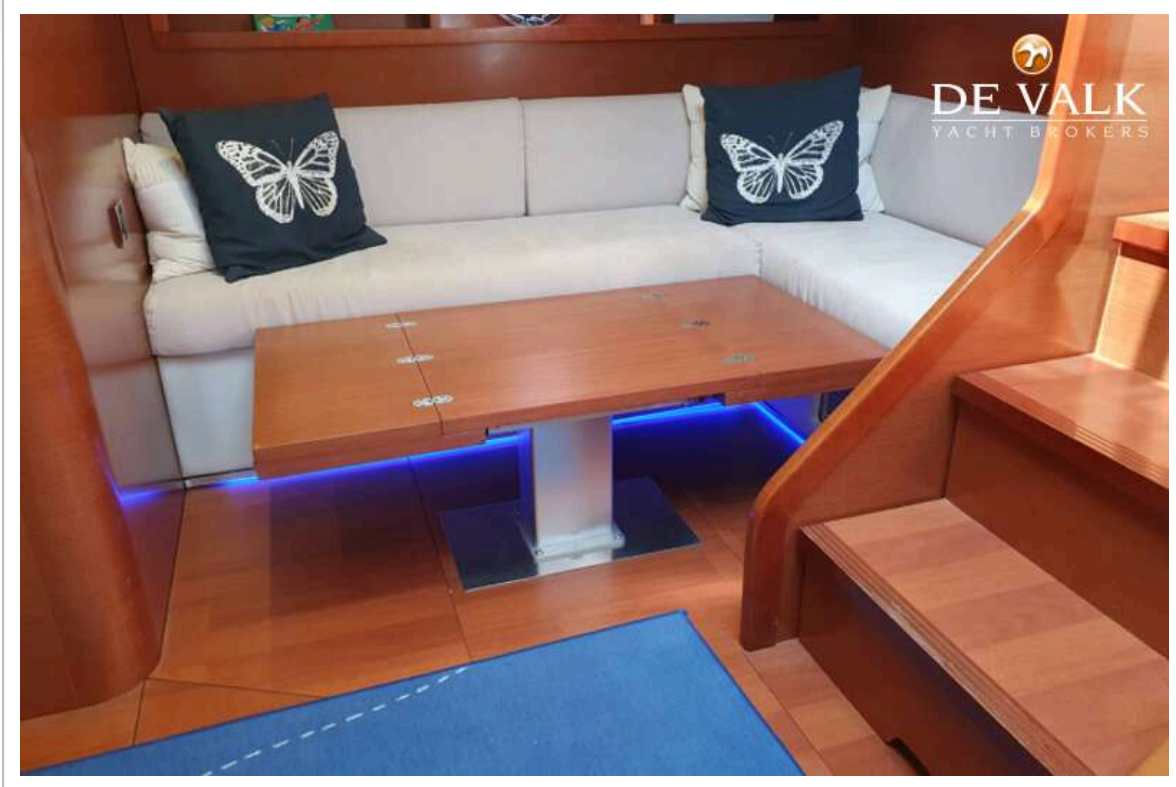
# BENETEAU MONTE CARLO 47 HARD TOP



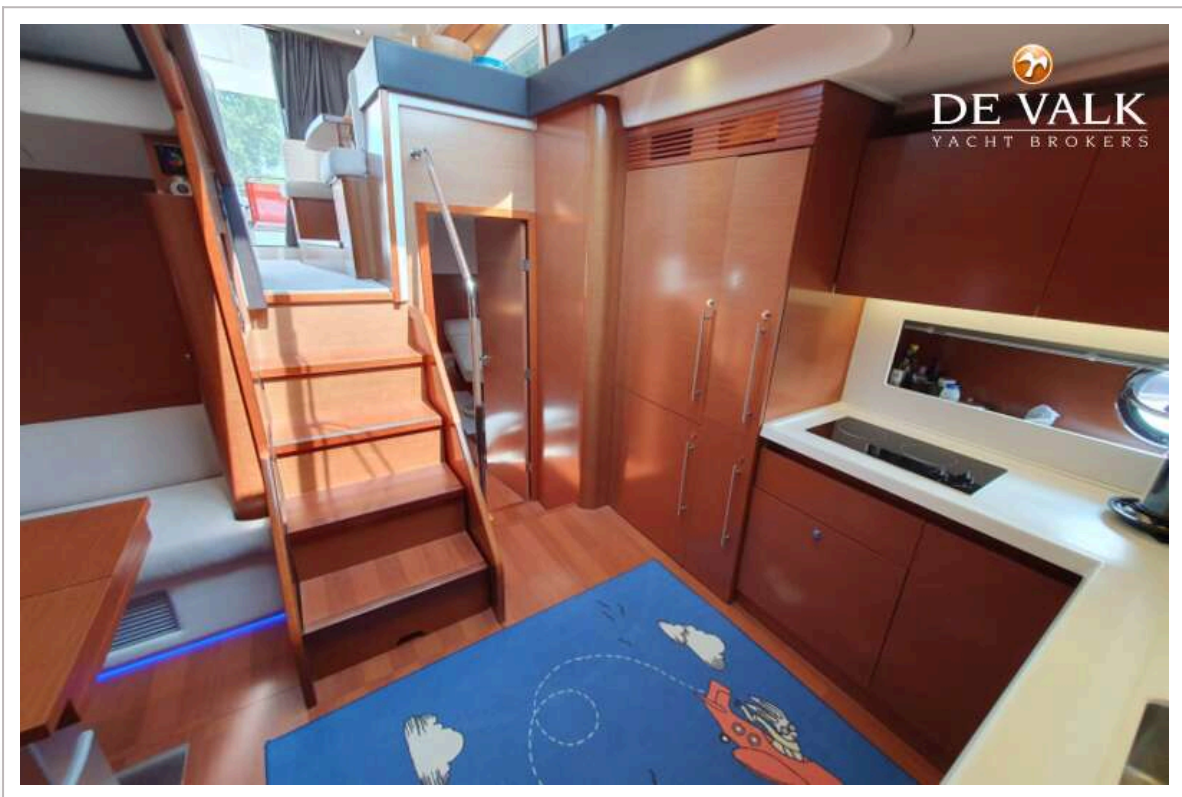
# BENETEAU MONTE CARLO 47 HARD TOP



# BENETEAU MONTE CARLO 47 HARD TOP



# BENETEAU MONTE CARLO 47 HARD TOP





# BENETEAU MONTE CARLO 47 HARD TOP



# BENETEAU MONTE CARLO 47 HARD TOP

